

Data Path : Z:\voasrv\HPCHEM1\MSVOA_U\Data\VU020623\
 Data File : VU052974.D
 Acq On : 06 Feb 2023 12:39
 Operator : JC/MD
 Sample : 01422-11
 Misc : 25.0mL/MSVOA_U/WATER
 ALS Vial : 8 Sample Multiplier: 1

Instrument :
 MSVOA_U
 ClientSampleId :
 C0B73

Quant Time: Feb 07 01:05:16 2023
 Quant Method : Z:\voasrv\HPCHEM1\MSVOA_U\Method\SFAMUTR011023WMA.M
 Quant Title : TRACE VOA SFAM1.0
 QLast Update : Sun Feb 05 21:58:05 2023
 Response via : Initial Calibration

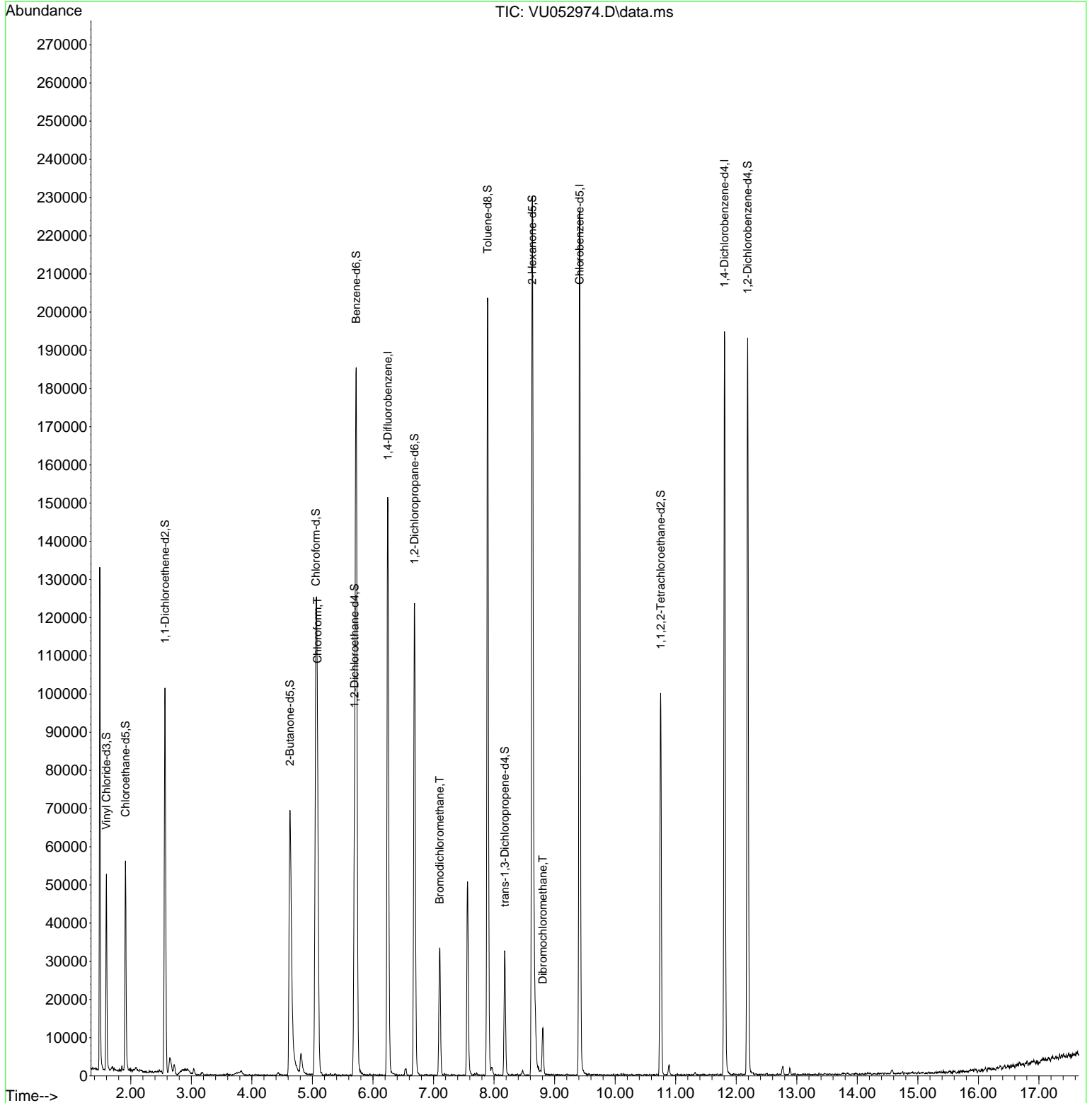
| Compound | R.T. | QIon | Response | Conc | Units | Dev(Min) |
|-------------------------------|--------|----------------|----------|--------|----------|------------|
| ----- | | | | | | |
| Internal Standards | | | | | | |
| 1) 1,4-Difluorobenzene | 6.247 | 114 | 130357 | 5.000 | ug/L | # 0.00 |
| 28) Chlorobenzene-d5 | 9.414 | 117 | 132684 | 5.000 | ug/L | 0.00 |
| 58) 1,4-Dichlorobenzene-d4 | 11.806 | 152 | 56652 | 5.000 | ug/L | 0.00 |
| System Monitoring Compounds | | | | | | |
| 4) Vinyl Chloride-d3 | 1.597 | 65 | 36924 | 3.224 | ug/L | 0.00 |
| Spiked Amount | 5.000 | Range 40 - 130 | Recovery | = | 64.400% | |
| 7) Chloroethane-d5 | 1.912 | 69 | 41943 | 4.495 | ug/L | 0.00 |
| Spiked Amount | 5.000 | Range 65 - 130 | Recovery | = | 90.000% | |
| 11) 1,1-Dichloroethene-d2 | 2.565 | 65 | 18766 | 3.721 | ug/L | 0.00 |
| Spiked Amount | 5.000 | Range 60 - 125 | Recovery | = | 74.400% | |
| 20) 2-Butanone-d5 | 4.629 | 46 | 110274 | 36.012 | ug/L | 0.00 |
| Spiked Amount | 50.000 | Range 40 - 130 | Recovery | = | 72.020% | |
| 24) Chloroform-d | 5.057 | 84 | 102127 | 4.781 | ug/L | 0.00 |
| Spiked Amount | 5.000 | Range 70 - 125 | Recovery | = | 95.600% | |
| 26) 1,2-Dichloroethane-d4 | 5.697 | 65 | 49160 | 4.481 | ug/L | 0.00 |
| Spiked Amount | 5.000 | Range 70 - 130 | Recovery | = | 89.600% | |
| 32) Benzene-d6 | 5.723 | 84 | 181804 | 4.227 | ug/L | 0.00 |
| Spiked Amount | 5.000 | Range 70 - 125 | Recovery | = | 84.600% | |
| 36) 1,2-Dichloropropane-d6 | 6.684 | 67 | 59766 | 4.170 | ug/L | 0.00 |
| Spiked Amount | 5.000 | Range 60 - 140 | Recovery | = | 83.400% | |
| 41) Toluene-d8 | 7.893 | 98 | 139900 | 3.690 | ug/L | 0.00 |
| Spiked Amount | 5.000 | Range 70 - 130 | Recovery | = | 73.800% | |
| 43) trans-1,3-Dichloroprop... | 8.176 | 79 | 18578 | 3.486 | ug/L | 0.00 |
| Spiked Amount | 5.000 | Range 55 - 130 | Recovery | = | 69.800% | |
| 46) 2-Hexanone-d5 | 8.629 | 63 | 74595 | 33.695 | ug/L | 0.00 |
| Spiked Amount | 50.000 | Range 45 - 130 | Recovery | = | 67.380% | |
| 56) 1,1,2,2-Tetrachloroeth... | 10.751 | 84 | 50072 | 4.563 | ug/L | 0.00 |
| Spiked Amount | 5.000 | Range 65 - 120 | Recovery | = | 91.200% | |
| 66) 1,2-Dichlorobenzene-d4 | 12.189 | 152 | 55554 | 5.387 | ug/L | 0.00 |
| Spiked Amount | 5.000 | Range 80 - 120 | Recovery | = | 107.800% | |
| Target Compounds | | | | | | |
| 25) Chloroform | 5.083 | 83 | 68222 | 2.899 | ug/L | Qvalue 100 |
| 38) Bromodichloromethane | 7.102 | 83 | 22983 | 1.385 | ug/L | 98 |
| 49) Dibromochloromethane | 8.806 | 129 | 6717 | 0.655 | ug/L | 98 |
| ----- | | | | | | |

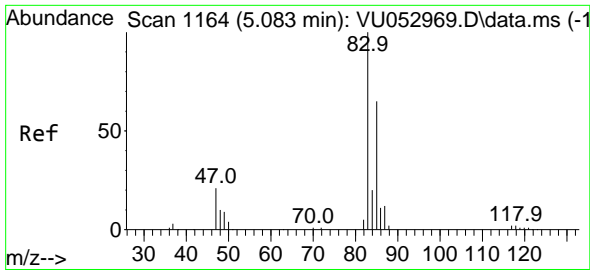
(#) = qualifier out of range (m) = manual integration (+) = signals summed

Data Path : Z:\voasrv\HPCHEM1\MSVOA_U\Data\VU020623\
 Data File : VU052974.D
 Acq On : 06 Feb 2023 12:39
 Operator : JC/MD
 Sample : 01422-11
 Misc : 25.0mL/MSVOA_U/WATER
 ALS Vial : 8 Sample Multiplier: 1

Instrument :
 MSVOA_U
 ClientSampleId :
 C0B73

Quant Time: Feb 07 01:05:16 2023
 Quant Method : Z:\voasrv\HPCHEM1\MSVOA_U\Method\SFAMUTR011023WMA.M
 Quant Title : TRACE VOA SFAM1.0
 QLast Update : Sun Feb 05 21:58:05 2023
 Response via : Initial Calibration

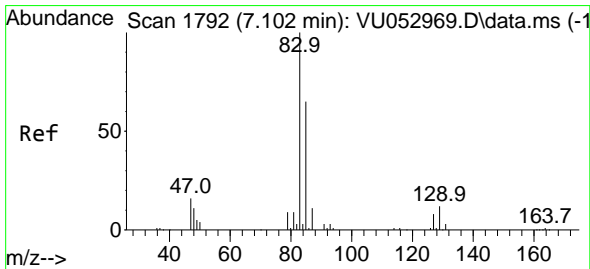
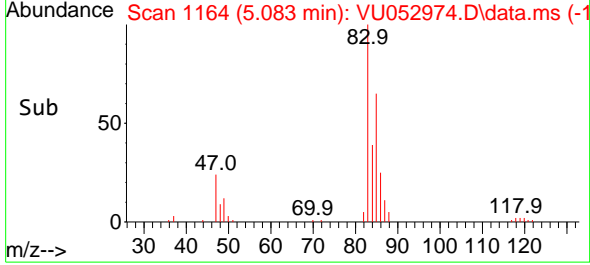
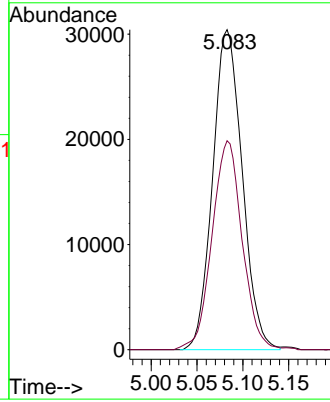
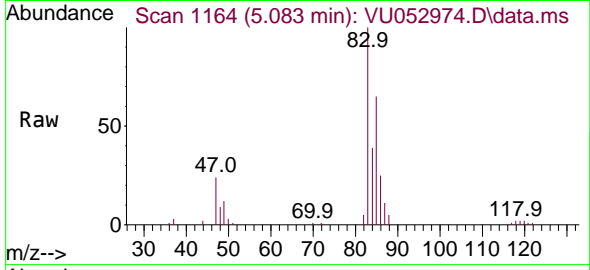




#25
 Chloroform
 Concen: 2.899 ug/L
 RT: 5.083 min Scan# 1164
 Delta R.T. 0.000 min
 Lab File: VU052974.D
 Acq: 06 Feb 2023 12:39

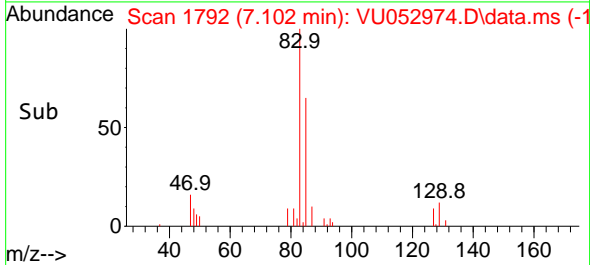
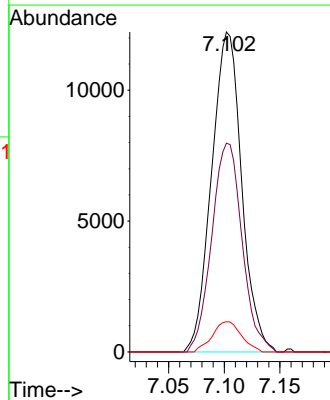
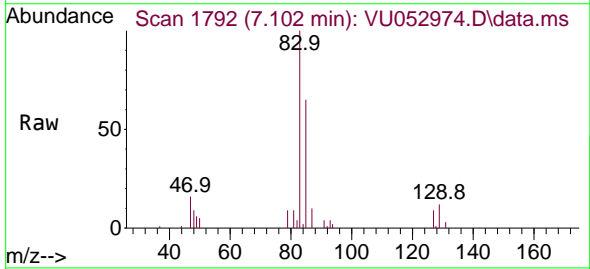
Instrument : MSVOA_U
 ClientSampleId : C0B73

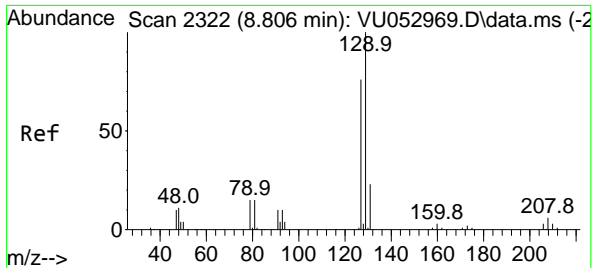
Tgt Ion: 83 Resp: 68222
 Ion Ratio Lower Upper
 83 100
 85 65.3 45.6 84.6



#38
 Bromodichloromethane
 Concen: 1.385 ug/L
 RT: 7.102 min Scan# 1792
 Delta R.T. 0.000 min
 Lab File: VU052974.D
 Acq: 06 Feb 2023 12:39

Tgt Ion: 83 Resp: 22983
 Ion Ratio Lower Upper
 83 100
 85 65.2 47.0 87.4
 127 9.4 6.9 10.3





#49
 Dibromochloromethane
 Concen: 0.655 ug/L
 RT: 8.806 min Scan# 21
 Delta R.T. 0.000 min
 Lab File: VU052974.D
 Acq: 06 Feb 2023 12:39

Instrument :
 MSVOA_U
 ClientSampleId :
 C0B73

Tgt Ion:129 Resp: 6717
 Ion Ratio Lower Upper
 129 100
 127 75.1 53.5 99.5

