

Data Path : Z:\voasrv\HPCHEM1\MSVOA_U\Data\VU020623\
 Data File : VU052976.D
 Acq On : 06 Feb 2023 13:28
 Operator : JC/MD
 Sample : 01422-10
 Misc : 25.0mL/MSVOA_U/WATER
 ALS Vial : 10 Sample Multiplier: 1

Instrument :
 MSVOA_U
 ClientSampleId :
 C0B72

Integration Parameters: rteint.p
 Integrator: RTE
 Smoothing : ON Filtering: 5
 Sampling : 1 Min Area: 3 % of largest Peak
 Start Thrs: 0.1 Max Peaks: 100
 Stop Thrs : 0 Peak Location: TOP

If leading or trailing edge < 100 prefer < Baseline drop else tangent >
 Peak separation: 5

Method : Z:\voasrv\HPCHEM1\MSVOA_U\Method\SFAMUTR011023WMA.M
 Title : TRACE VOA SFAM1.0

Signal : TIC: VU052976.D\data.ms

peak #	R.T. min	first scan	max scan	last scan	PK TY	peak height	corr. area	corr. % max.	% of total
1	1.597	72	80	91	rBV	50231	57764	11.44%	1.390%
2	1.912	169	178	193	rVB	55784	74398	14.74%	1.791%
3	2.565	369	381	395	rBV	114563	186573	36.96%	4.490%
4	3.134	547	558	573	rBV2	15626	31385	6.22%	0.755%
5	4.645	1012	1028	1064	rBV2	54698	212652	42.12%	5.118%
6	4.809	1069	1079	1103	rVB3	16867	45526	9.02%	1.096%
7	5.060	1141	1157	1181	rBV2	103183	229846	45.53%	5.532%
8	5.722	1342	1363	1386	rBV2	181166	484618	96.00%	11.664%
9	6.247	1512	1526	1544	rBV	161015	306305	60.68%	7.372%
10	6.533	1609	1615	1628	rVB6	2945	5372	1.06%	0.129%
11	6.687	1645	1663	1681	rBV	123684	239035	47.35%	5.753%
12	7.562	1923	1935	1953	rBV	49616	87184	17.27%	2.098%
13	7.893	2025	2038	2058	rBV	210302	358101	70.94%	8.619%
14	8.176	2115	2126	2146	rBV3	31769	52981	10.50%	1.275%
15	8.549	2231	2242	2256	rVB2	53360	88201	17.47%	2.123%
16	8.632	2256	2268	2300	rBV2	231628	504817	100.00%	12.150%
17	9.414	2498	2511	2535	rBV2	231610	384833	76.23%	9.262%
18	10.751	2916	2927	2946	rVB	104233	164839	32.65%	3.967%
19	11.809	3243	3256	3273	rBV	197356	318745	63.14%	7.671%
20	12.188	3362	3374	3395	rBV	200063	321811	63.75%	7.745%

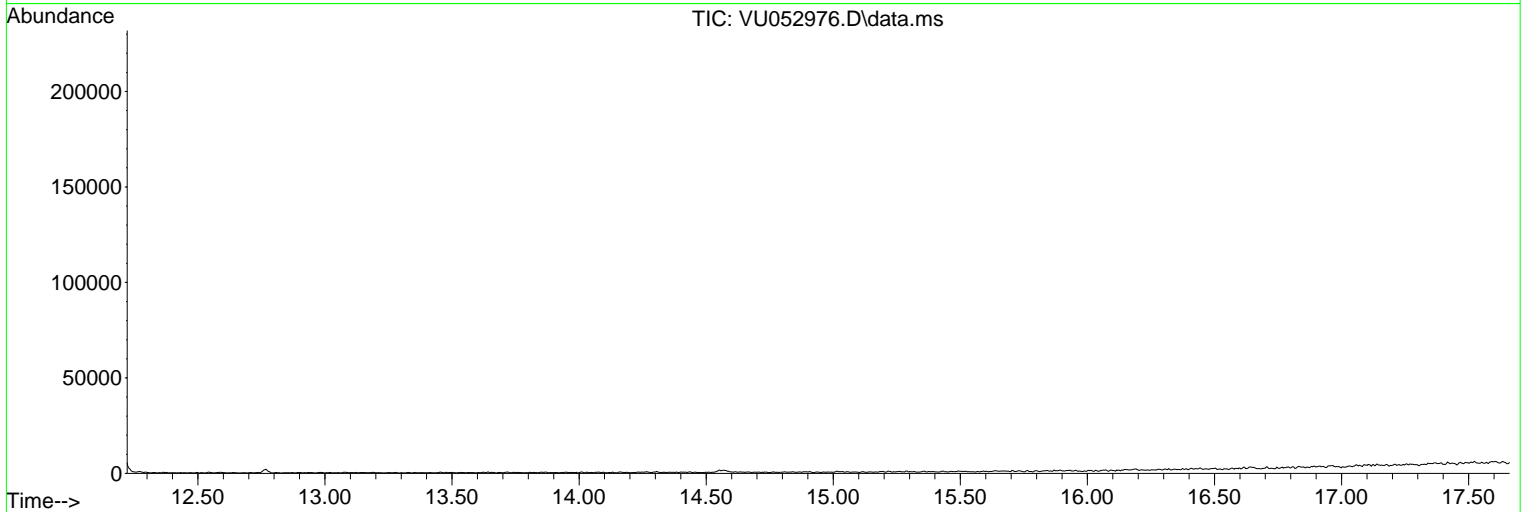
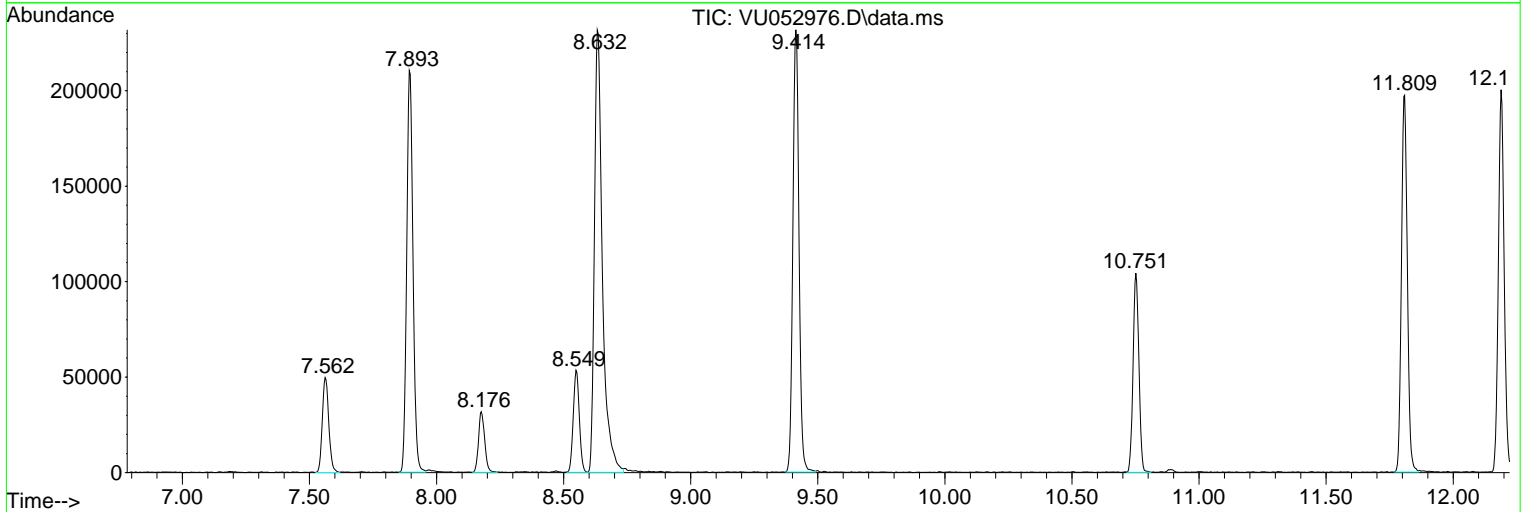
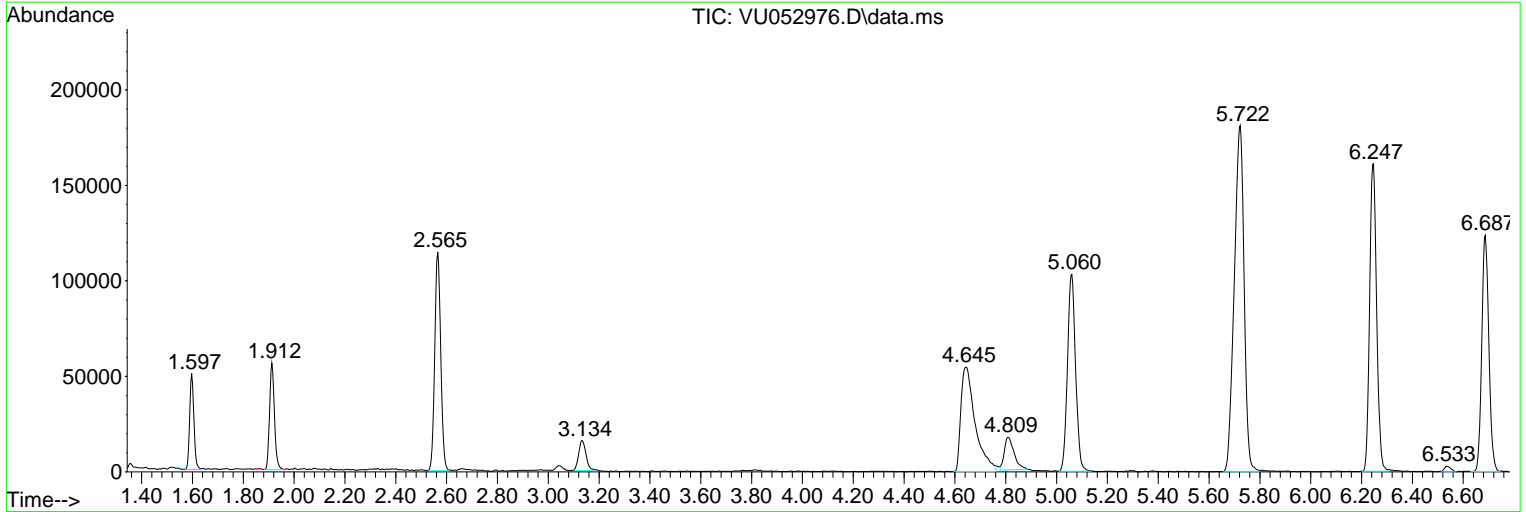
Sum of corrected areas: 4154986

Data Path : Z:\voasrv\HPCHEM1\MSVOA_U\Data\VU020623\
 Data File : VU052976.D
 Acq On : 06 Feb 2023 13:28
 Operator : JC/MD
 Sample : 01422-10
 Misc : 25.0mL/MSVOA_U/WATER
 ALS Vial : 10 Sample Multiplier: 1

Instrument :
 MSVOA_U
 ClientSampleId :
 C0B72

Quant Method : Z:\voasrv\HPCHEM1\MSVOA_U\Method\SFAMUTR011023WMA.M
 Quant Title : TRACE VOA SFAM1.0

TIC Library : C:\Database\NIST20.L
 TIC Integration Parameters: LSCINT.P



Data Path : Z:\voasrv\HPCHEM1\MSVOA_U\Data\VU020623\
 Data File : VU052976.D
 Acq On : 06 Feb 2023 13:28
 Operator : JC/MD
 Sample : 01422-10
 Misc : 25.0mL/MSVOA_U/WATER
 ALS Vial : 10 Sample Multiplier: 1

Instrument :
 MSVOA_U
 ClientSampleId :
 C0B72

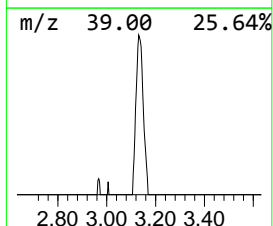
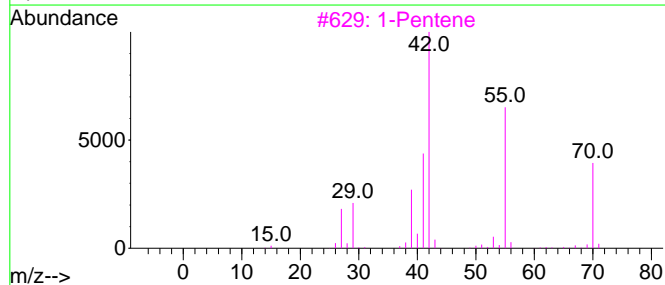
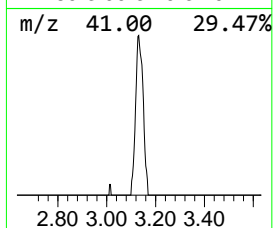
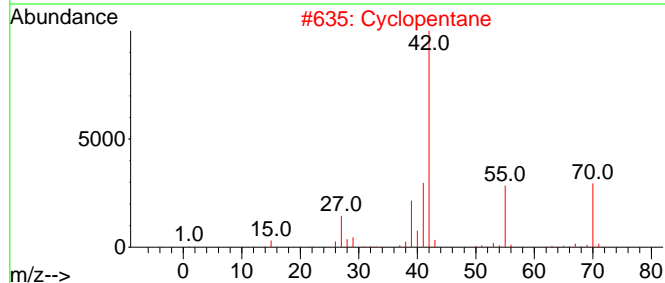
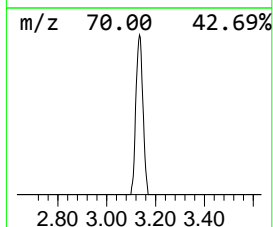
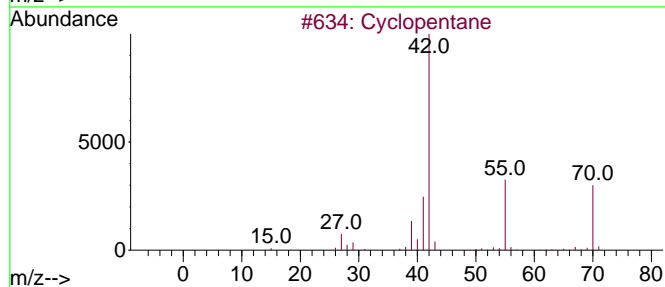
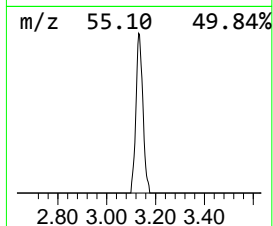
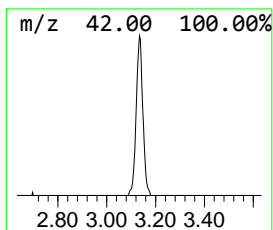
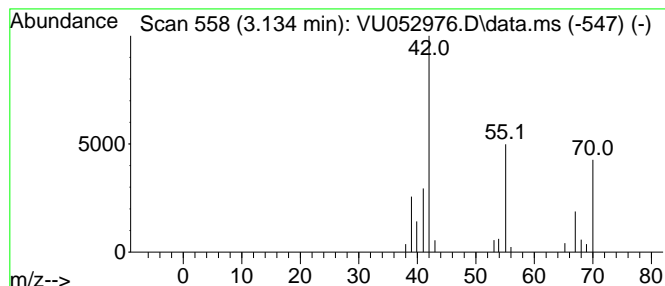
Quant Method : Z:\voasrv\HPCHEM1\MSVOA_U\Method\SFAMUTR011023WMA.M
 Quant Title : TRACE VOA SFAM1.0

TIC Library : C:\Database\NIST20.L
 TIC Integration Parameters: LSCINT.P

 Peak Number 1 (DEL) Alkane: Cyclic3.134 Concentration Rank 3

R.T.	EstConc	Area	Relative to ISTD	R.T.
3.134	0.51 ug/L	31385	1,4-Difluorobenzene	6.247

Hit#	of 5	Tentative ID	MW	MolForm	CAS#	Qual
1		Cyclopentane	70	C5H10	000287-92-3	72
2		Cyclopentane	70	C5H10	000287-92-3	64
3		1-Pentene	70	C5H10	000109-67-1	64
4		Cyclopentane	70	C5H10	000287-92-3	9
5		Cyclobutane, methyl-	70	C5H10	000598-61-8	9



Data Path : Z:\voasrv\HPCHEM1\MSVOA_U\Data\VU020623\
 Data File : VU052976.D
 Acq On : 06 Feb 2023 13:28
 Operator : JC/MD
 Sample : 01422-10
 Misc : 25.0mL/MSVOA_U/WATER
 ALS Vial : 10 Sample Multiplier: 1

Instrument :
 MSVOA_U
 ClientSampleId :
 C0B72

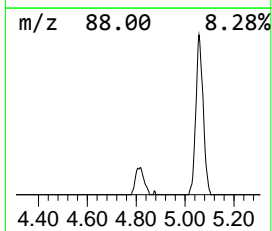
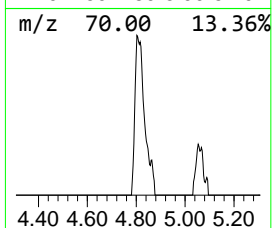
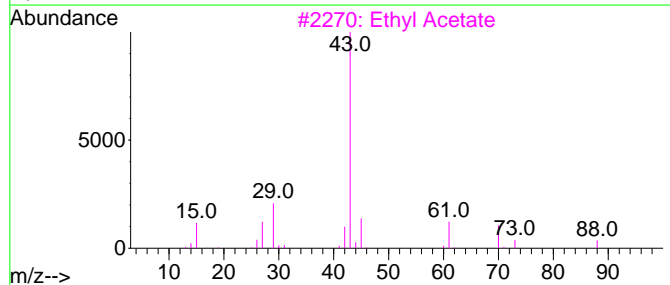
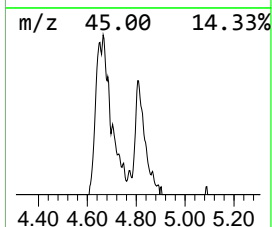
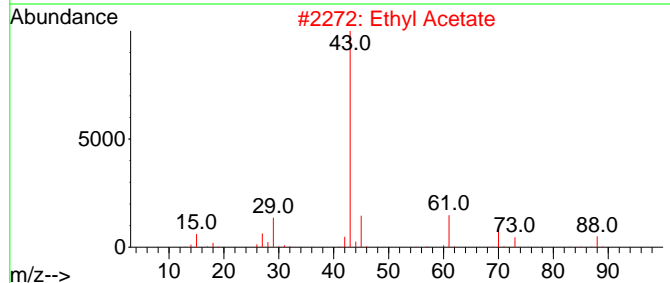
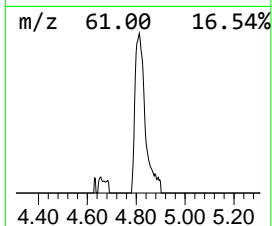
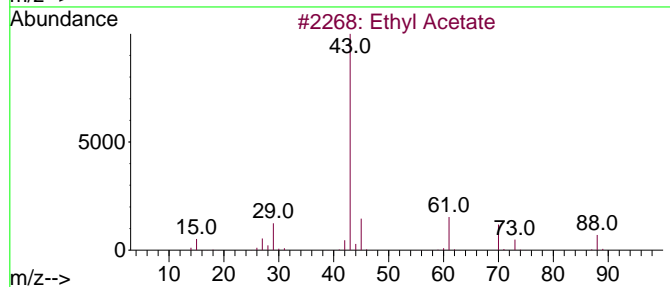
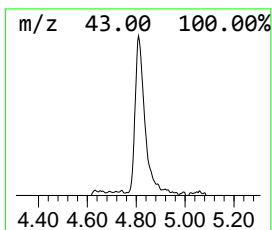
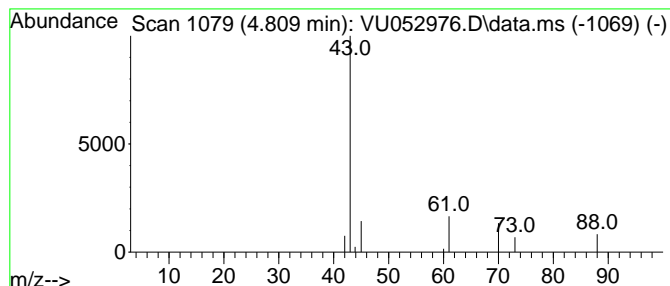
Quant Method : Z:\voasrv\HPCHEM1\MSVOA_U\Method\SFAMUTR011023WMA.M
 Quant Title : TRACE VOA SFAM1.0

TIC Library : C:\Database\NIST20.L
 TIC Integration Parameters: LSCINT.P

 Peak Number 2 Ethyl Acetate Concentration Rank 2

R.T.	EstConc	Area	Relative to ISTD	R.T.
4.809	0.74 ug/L	45526	1,4-Difluorobenzene	6.247

Hit#	of	5	Tentative ID	MW	MolForm	CAS#	Qual
1			Ethyl Acetate	88	C4H8O2	000141-78-6	90
2			Ethyl Acetate	88	C4H8O2	000141-78-6	90
3			Ethyl Acetate	88	C4H8O2	000141-78-6	90
4			Ethyl Acetate	88	C4H8O2	000141-78-6	83
5			CH3C(O)CH2CH2OH	88	C4H8O2	000590-90-9	45



Data Path : Z:\voasrv\HPCHEM1\MSVOA_U\Data\VU020623\
Data File : VU052976.D
Acq On : 06 Feb 2023 13:28
Operator : JC/MD
Sample : 01422-10
Misc : 25.0mL/MSVOA_U/WATER
ALS Vial : 10 Sample Multiplier: 1

Instrument :
MSVOA_U
ClientSampleId :
C0B72

Quant Method : Z:\voasrv\HPCHEM1\MSVOA_U\Method\SFAMUTR011023WMA.M
Quant Title : TRACE VOA SFAM1.0

TIC Library : C:\Database\NIST0.L
TIC Integration Parameters: LSCINT.P

TIC Top Hit name	RT	EstConc	Units	Response	--Internal Standard--			
					#	RT	Resp	Conc
(DEL) Alkane: C...	3.134	0.5	ug/L	31385	1	6.247	306305	5.0
Ethyl Acetate	4.809	0.7	ug/L	45526	1	6.247	306305	5.0