

Data Path : Z:\VOASRV\HPCHEM1\MSVOA U\DATA\VU020819\  
 Data File : VU029379.D  
 Acq On : 08 Feb 2019 15:01  
 Operator : JC/SP  
 Sample : K1161-07  
 Misc : 25.0mL/MSVOA U/WATER  
 ALS Vial : 9 Sample Multiplier: 1

Instrument :  
 MSVOA\_U  
 ClientSampled :

Quant Time: Feb 09 03:19:13 2019  
 Quant Method : Z:\VOASRV\HPCHEM1\MSVOA U\METHOD\524U020519DW.M  
 Quant Title : METHOD 524.2 VOLATILES DRINKING WATER  
 QLast Update : Fri Feb 08 10:52:46 2019  
 Response via : Initial Calibration

Internal Standards	R.T.	QIon	Response	Conc	Units	Dev(Min)
1) Fluorobenzene	5.74	96	57053	1.00	ug/l	0.00

System Monitoring Compounds

57) 4-Bromofluorobenzene	10.31	95	21535	0.97	ug/l	0.00
Spiked Amount	1.000		Recovery	=	97.00%	
68) 1,2-Dichlorobenzene-d4	11.86	152	23955	1.05	ug/l	0.00
Spiked Amount	1.000		Recovery	=	105.00%	

Target Compounds

						Ovalue
2) Dichlorodifluoromethane	1.13	85	20	0.001	ug/l #	43
3) Chloromethane	1.33	50	357	0.018	ug/l	98
4) Vinyl Chloride	1.40	62	643980	28.233	ug/l	98
5) Bromomethane	1.63	94	529	0.042	ug/l #	29
8) 1,1,2-Trichloro-1,2,2-trif	2.28	101	605	0.036	ug/l #	58
9) 1,1-Dichloroethene	2.28	96	163710	9.947	ug/l	69
10) Iodomethane	2.43	142	42	0.301	ug/l #	1
11) Allyl Chloride	2.50	41	298	0.011	ug/l	88
12) Acrylonitrile	2.93	53	406	0.110	ug/l #	56
13) Acetone	2.32	43	778	0.219	ug/l #	47
14) Carbon Disulfide	2.48	76	883	0.015	ug/l #	78
15) Methylene Chloride	2.70	84	271254	13.592	ug/l #	77
16) trans-1,2-Dichloroethene	2.98	96	231198	12.562	ug/l #	77
18) 2-Butanone	4.27	43	98	0.025	ug/l	78
19) Cyclohexane	4.99	56	34	0.001	ug/l #	1
20) Methylcyclohexane	6.44	83	1383	0.049	ug/l #	18
21) 2,2-Dichloropropane	4.23	77	513	0.019	ug/l #	1
22) cis-1,2-Dichloroethene	4.22	96	268023	15.459	ug/l	66
23) Diethyl Ether	2.10	59	1683	0.127	ug/l	87
24) tert-Butyl Alcohol	2.83	59	714	0.520	ug/l #	55
25) Methyl tert-Butyl Ether	3.02	73	267	0.006	ug/l #	47
26) Bromochloromethane	4.54	128	20	0.003	ug/l #	1
27) Chloroform	4.68	83	2696	0.095	ug/l	95
28) 1,1,1-Trichloroethane	4.91	97	441299	16.786	ug/l	95
30) Carbon Tetrachloride	5.13	117	316662	13.305	ug/l	100
31) Isopropyl Ether	3.58	45	315	0.007	ug/l	76
32) Ethyl-t-butyl ether	4.22	59	7760	0.176	ug/l #	36
33) Tert-Amyl methyl ether	5.73	73	1139	0.029	ug/l #	30
34) Propionitrile	4.18	54	20	0.019	ug/l #	1
35) Benzene	5.39	78	981654	15.554	ug/l	98
36) 1,2-Dichloroethane	5.40	62	52464	2.748	ug/l #	92
37) Trichloroethene	6.18	130	268115	14.804	ug/l	86
38) 1,2-Dichloropropane	6.43	63	175346	10.680	ug/l	100
39) Methacrylonitrile	4.56	41	110	0.021	ug/l #	14
40) Methyl acrylate	4.42	55	236	0.029	ug/l #	50
41) Tetrahydrofuran	4.66	42	347	0.129	ug/l #	52
42) 1-Chlorobutane	5.05	56	129	0.004	ug/l	73
43) Dibromomethane	6.63	93	19	0.002	ug/l #	4
44) Bromodichloromethane	6.76	83	392	0.018	ug/l #	82
45) 4-Methyl-2-Pentanone	7.49	43	104	0.010	ug/l #	47
46) t-1,4-Dichloro-2-butene	10.31	75	10771	2.156	ug/l #	16

Data Path : Z:\VOASRV\HPCHEM1\MSVOA U\DATA\VU020819\  
 Data File : VU029379.D  
 Acq On : 08 Feb 2019 15:01  
 Operator : JC/SP  
 Sample : K1161-07  
 Misc : 25.0mL/MSVOA U/WATER  
 ALS Vial : 9 Sample Multiplier: 1

Instrument :  
 MSVOA\_U  
 ClientSampled :

Quant Time: Feb 09 03:19:13 2019  
 Quant Method : Z:\VOASRV\HPCHEM1\MSVOA U\METHOD\524U020519DW.M  
 Quant Title : METHOD 524.2 VOLATILES DRINKING WATER  
 QLast Update : Fri Feb 08 10:52:46 2019  
 Response via : Initial Calibration

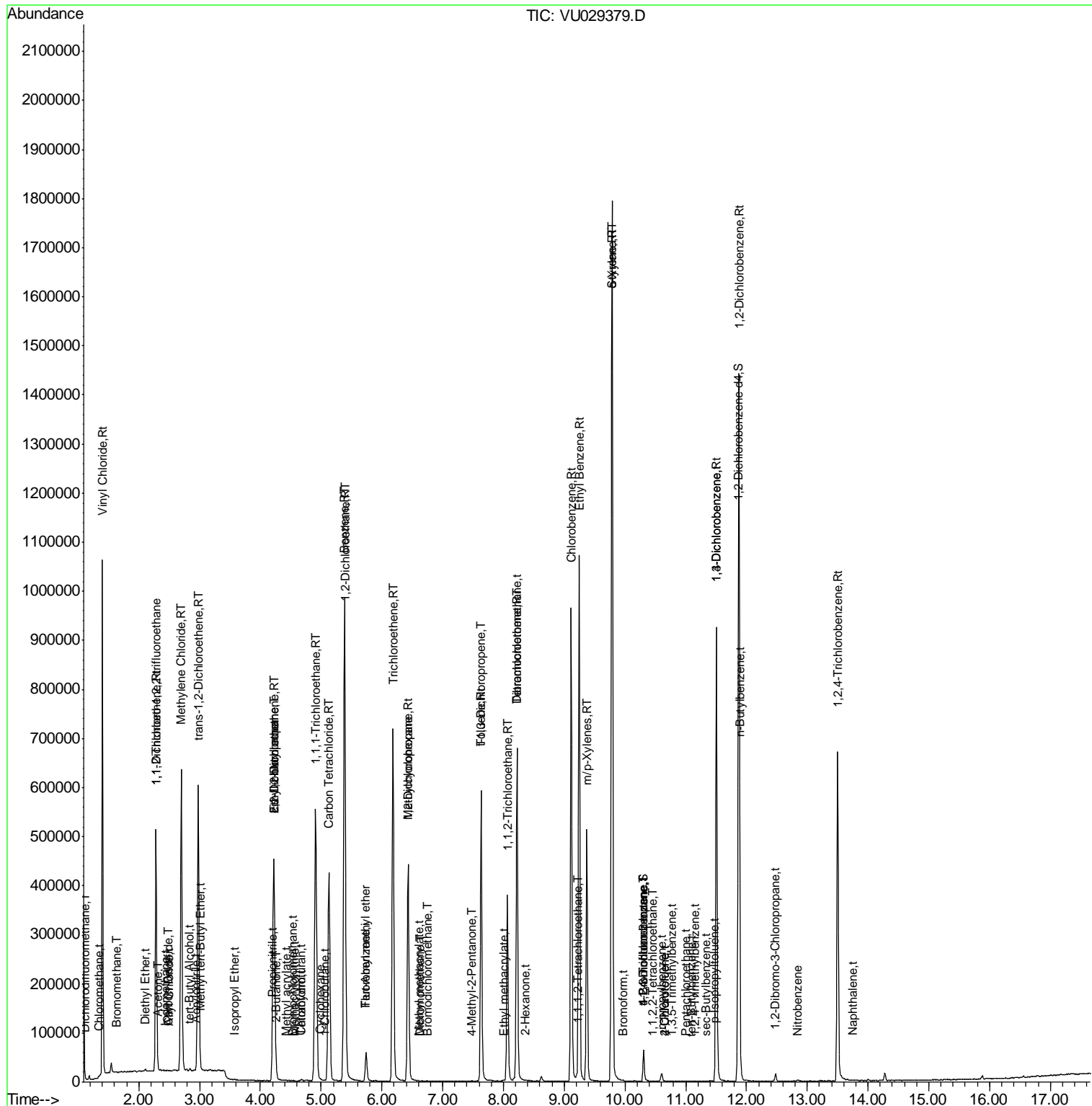
Internal Standards	R.T.	QIon	Response	Conc	Units	Dev(Min)	
47) Methyl methacrylate	6.62	69	103	0.013	ug/l	#	1
48) Ethyl methacrylate	8.00	69	179	0.011	ug/l		73
49) Toluene	7.63	92	256350	6.347	ug/l		98
50) t-1,3-Dichloropropene	7.63	75	2694	0.123	ug/l	#	1
52) 1,1,2-Trichloroethane	8.06	97	122296	10.558	ug/l		98
54) 2-Hexanone	8.36	43	224	0.031	ug/l	#	1
55) Dibromochloromethane	8.22	129	145691	8.849	ug/l	#	12
58) Tetrachloroethene	8.22	164	160991	9.553	ug/l		92
59) Chlorobenzene	9.12	112	542143	11.916	ug/l		100
60) 1,1,1,2-Tetrachloroethane	9.21	131	2482	0.148	ug/l		85
61) Pentachloroethane	11.01	117	48	0.004	ug/l	#	8
63) Ethyl Benzene	9.25	91	759702	9.615	ug/l		95
64) m/p-Xylenes	9.37	106	153461	4.998	ug/l		86
65) o-Xylene	9.78	106	86858	2.882	ug/l		85
66) Styrene	9.79	104	826411	16.449	ug/l	#	84
67) Bromoform	9.96	173	177	0.017	ug/l	#	36
70) 1,1,2,2-Tetrachloroethane	10.44	83	22	0.001	ug/l	#	1
71) 1,2,3-Trichloropropane	10.31	75	10771	1.057	ug/l	#	50
73) n-propylbenzene	10.59	120	727	0.032	ug/l		95
74) 2-Chlorotoluene	10.67	126	47	0.002	ug/l		91
75) 1,3,5-Trimethylbenzene	10.76	105	142	0.002	ug/l	#	30
76) 4-Chlorotoluene	10.67	126	47	0.002	ug/l		90
77) tert-Butylbenzene	11.09	119	65	0.001	ug/l	#	1
78) 1,2,4-Trimethylbenzene	11.15	105	359	0.005	ug/l	#	33
79) sec-Butylbenzene	11.32	105	148	0.002	ug/l	#	58
80) Nitrobenzene	12.84	77	46	0.070	ug/l	#	43
81) p-Isopropyltoluene	11.47	119	234	0.003	ug/l	#	76
82) 1,3-Dichlorobenzene	11.50	146	395448	10.327	ug/l		95
83) 1,4-Dichlorobenzene	11.50	146	395448	10.369	ug/l		97
84) n-Butylbenzene	11.90	91	627	0.009	ug/l	#	52
85) 1,2-Dichlorobenzene	11.88	146	621895	17.177	ug/l		96
86) 1,2-Dibromo-3-Chloropropan	12.49	75	331	0.119	ug/l	#	11
87) 1,2,4-Trichlorobenzene	13.50	180	229960	9.043	ug/l		98
89) Naphthalene	13.75	128	286	0.007	ug/l	#	69

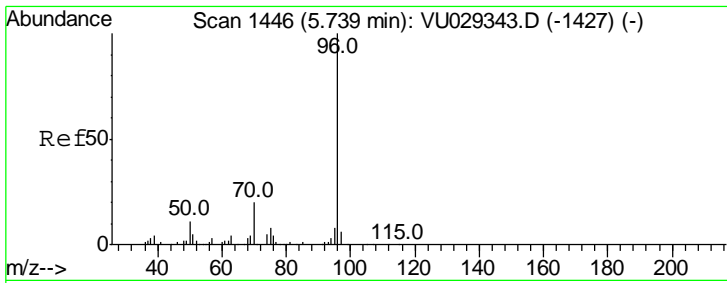
(#) = qualifier out of range (m) = manual integration (+) = signals summed

Data Path : Z:\VOASRV\HPCHEM1\MSVOA U\DATA\VU020819\  
 Data File : VU029379.D  
 Acq On : 08 Feb 2019 15:01  
 Operator : JC/SP  
 Sample : K1161-07  
 Misc : 25.0mL/MSVOA U/WATER  
 ALS Vial : 9 Sample Multiplier: 1

Instrument :  
 MSVOA\_U  
 Client Sampled :

Quant Time: Feb 09 03:19:13 2019  
 Quant Method : Z:\VOASRV\HPCHEM1\MSVOA U\METHOD\524U020519DW.M  
 Quant Title : METHOD 524.2 VOLATILES DRINKING WATER  
 QLast Update : Fri Feb 08 10:52:46 2019  
 Response via : Initial Calibration

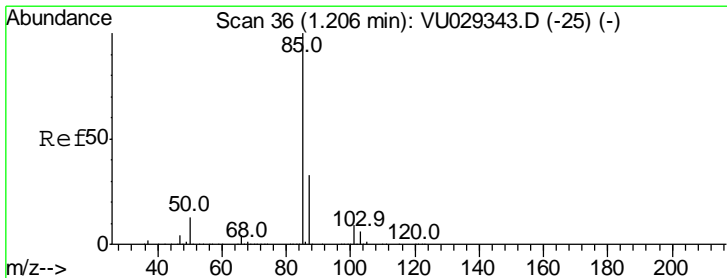
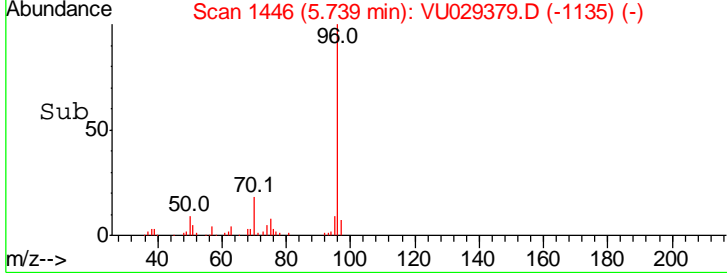
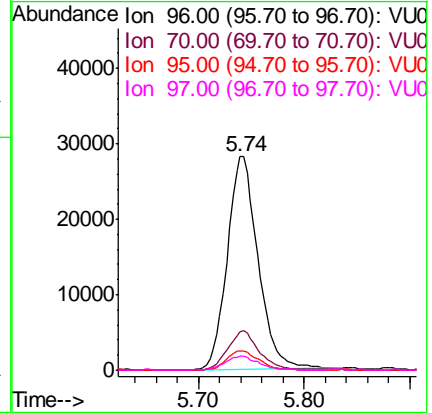
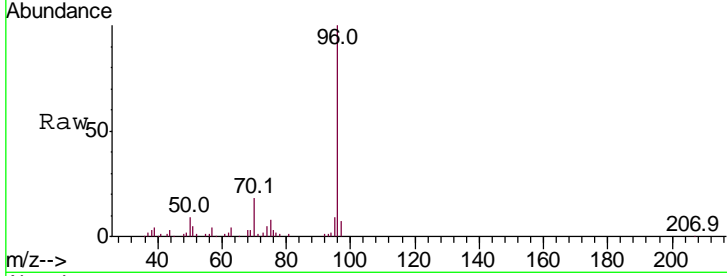




#1  
 Fluorobenzene  
 Concen: 1.000 ug/l  
 RT: 5.74 min Scan# 1446  
 Delta R.T. 0.00 min  
 Lab File: VU029379.D  
 Acq: 08 Feb 2019 15:01

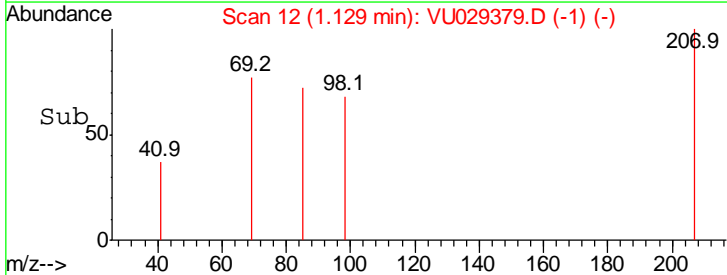
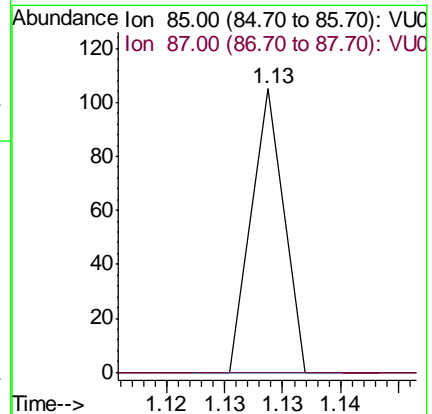
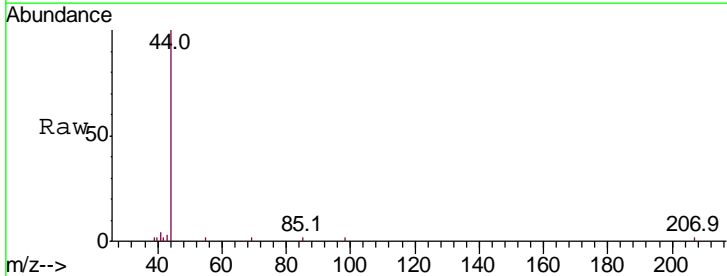
Instrument :  
 MSVOA\_U  
 ClientSampled :

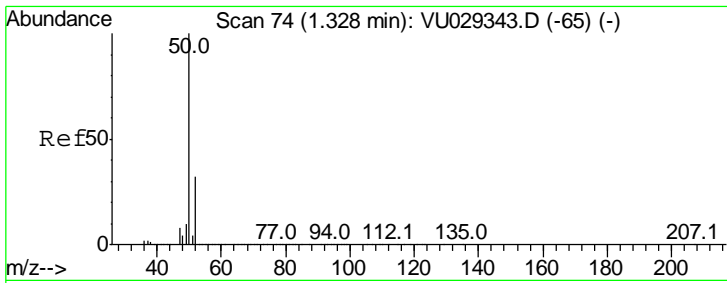
Tgt Ion	Resp	Lower	Upper
96	57053		
70	18.0	16.2	24.2
95	9.5	7.4	11.2
97	0.0	0.0	0.0



#2  
 Dichlorodifluoromethane  
 Concen: 0.001 ug/l  
 RT: 1.13 min Scan# 12  
 Delta R.T. -0.08 min  
 Lab File: VU029379.D  
 Acq: 08 Feb 2019 15:01

Tgt Ion	Resp	Lower	Upper
85	20		
87	0.0	15.9	47.6#

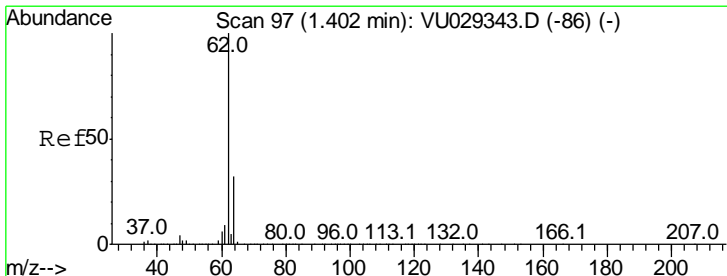
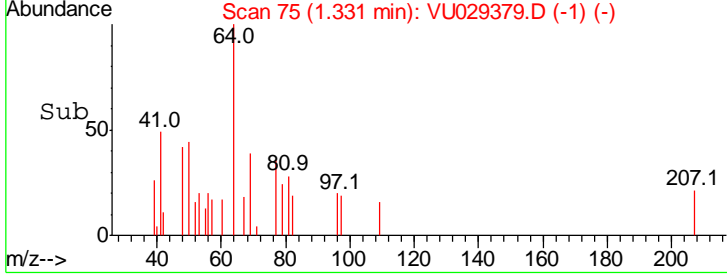
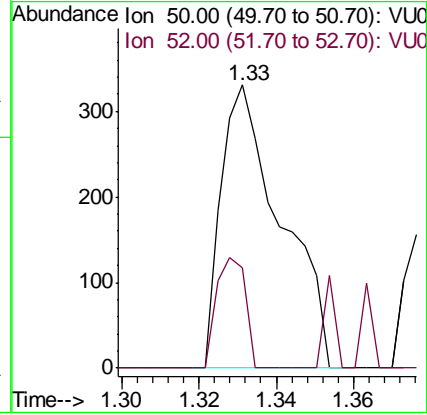
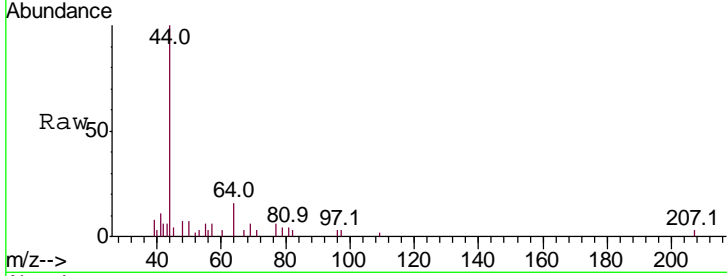




#3  
 Chloromethane  
 Concen: 0.018 ug/l  
 RT: 1.33 min Scan# 75  
 Delta R.T. 0.00 min  
 Lab File: VU029379.D  
 Acq: 08 Feb 2019 15:01

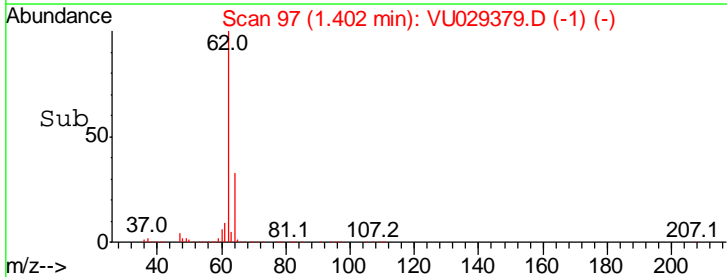
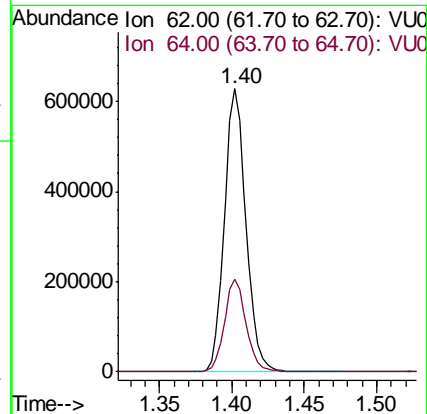
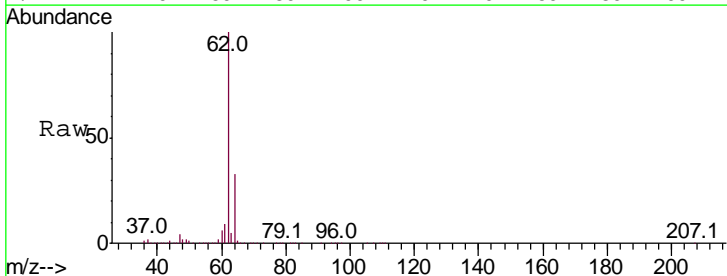
Instrument :  
 MSVOA\_U  
 ClientSampled :

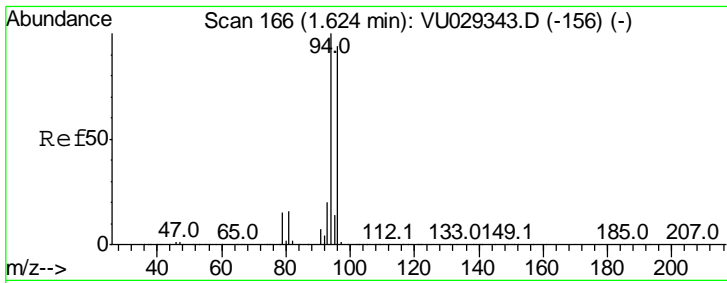
Tgt Ion	Resp	Lower	Upper
50	357		
52	35.3	27.3	40.9



#4  
 Vinyl Chloride  
 Concen: 28.233 ug/l  
 RT: 1.40 min Scan# 97  
 Delta R.T. 0.00 min  
 Lab File: VU029379.D  
 Acq: 08 Feb 2019 15:01

Tgt Ion	Resp	Lower	Upper
62	643980		
64	32.7	25.2	37.8

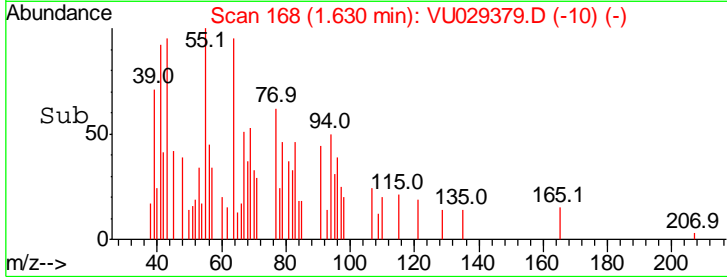
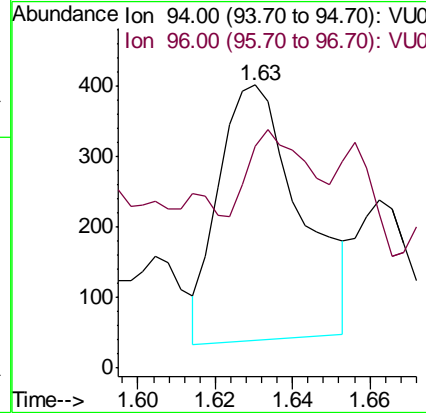
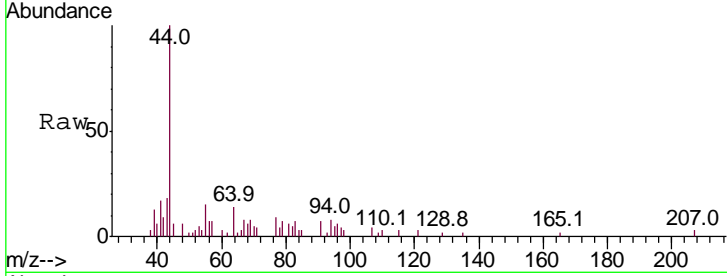




#5  
 Bromomethane  
 Concen: 0.042 ug/l  
 RT: 1.63 min Scan# 168  
 Delta R.T. 0.01 min  
 Lab File: VU029379.D  
 Acq: 08 Feb 2019 15:01

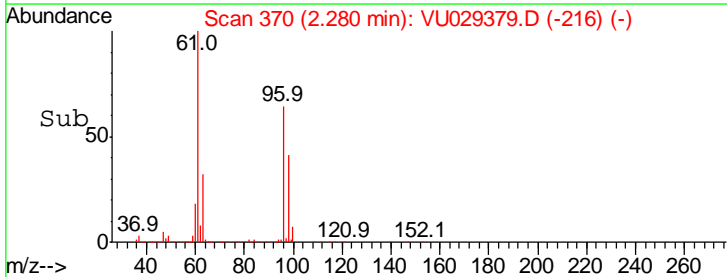
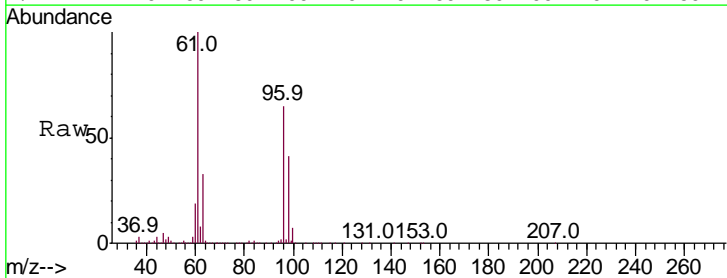
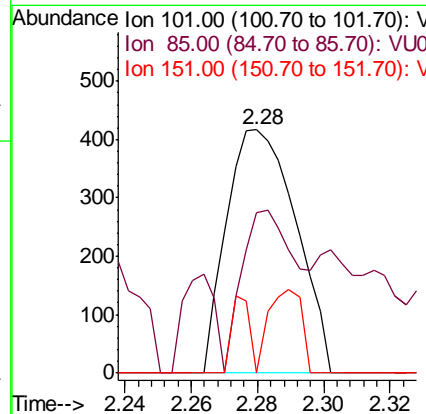
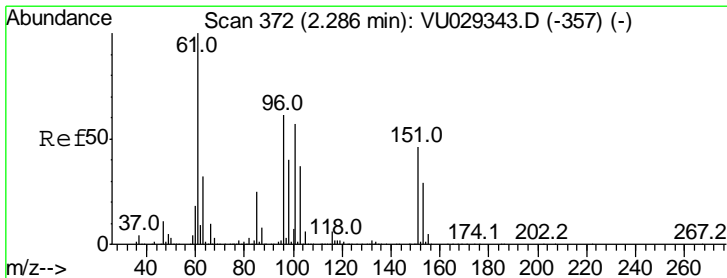
Instrument :  
 MSVOA\_U  
 ClientSampled :

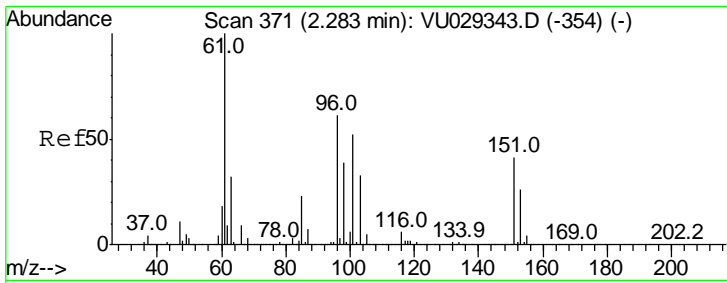
Tgt Ion: 94 Resp: 529  
 Ion Ratio Lower Upper  
 94 100  
 96 22.7 71.7 107.5#



#8  
 1,1,2-Trichloro-1,2,2-trifluoroethane  
 Concen: 0.036 ug/l  
 RT: 2.28 min Scan# 370  
 Delta R.T. -0.01 min  
 Lab File: VU029379.D  
 Acq: 08 Feb 2019 15:01

Tgt Ion: 101 Resp: 605  
 Ion Ratio Lower Upper  
 101 100  
 85 54.5 40.3 60.5  
 151 16.2 58.1 87.1#

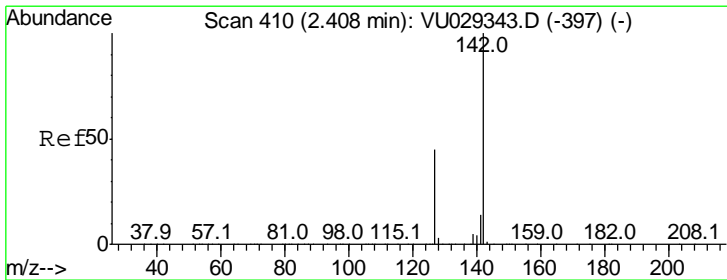
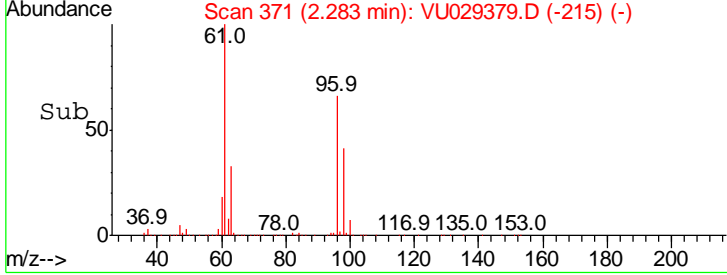
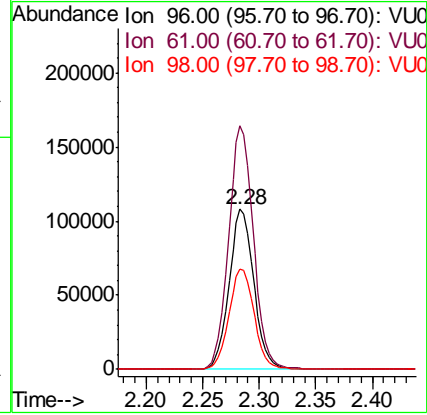
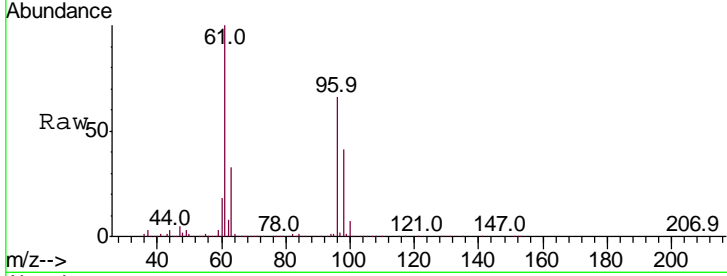




#9  
 1,1-Dichloroethene  
 Concen: 9.947 ug/l  
 RT: 2.28 min Scan# 371  
 Delta R.T. 0.00 min  
 Lab File: VU029379.D  
 Acq: 08 Feb 2019 15:01

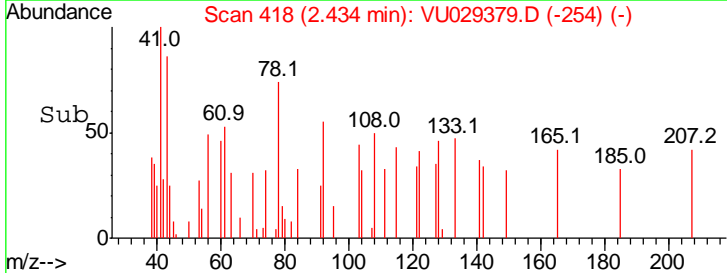
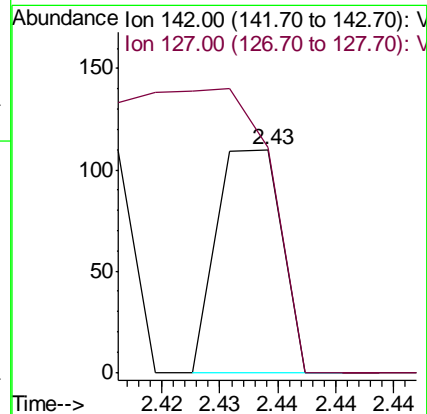
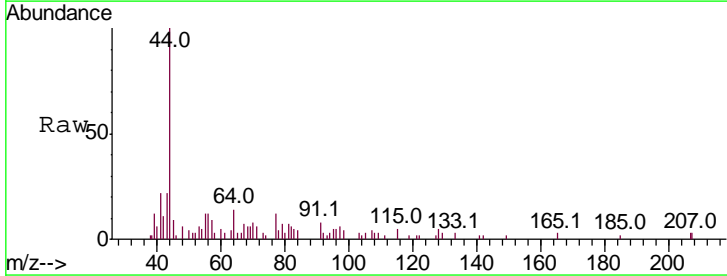
Instrument :  
 MSVOA\_U  
 ClientSampled :

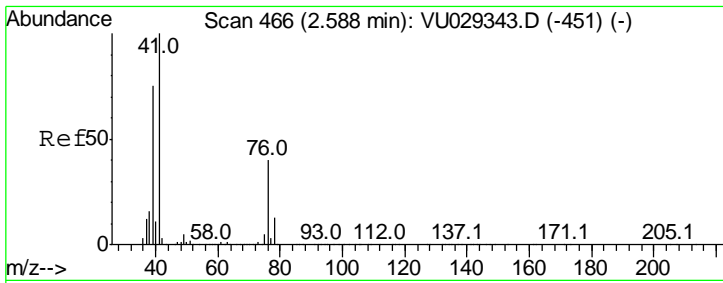
Tgt Ion	Resp	Lower	Upper
96	163710		
Ion Ratio			
96	100		
61	152.2	0.0	641.4
98	62.7	0.0	122.6



#10  
 Iodomethane  
 Concen: 0.301 ug/l  
 RT: 2.43 min Scan# 418  
 Delta R.T. 0.03 min  
 Lab File: VU029379.D  
 Acq: 08 Feb 2019 15:01

Tgt Ion	Resp	Lower	Upper
142	42		
Ion Ratio			
142	100		
127	357.1	47.6	71.4#

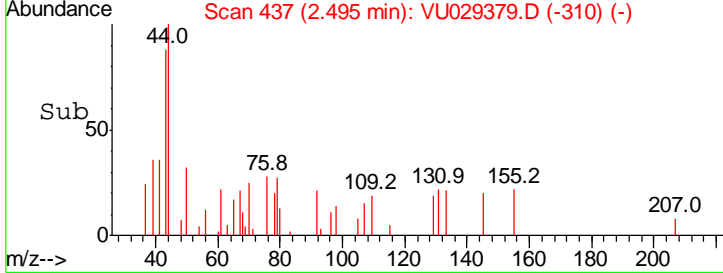
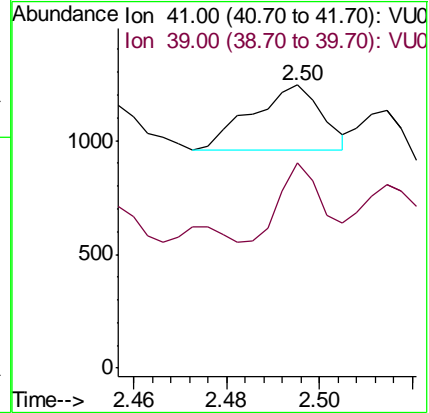
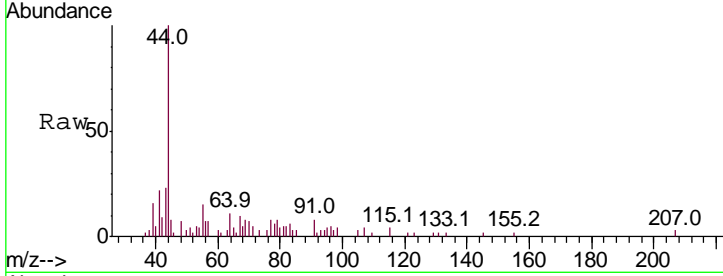




#11  
 Allyl Chloride  
 Concen: 0.011 ug/l  
 RT: 2.50 min Scan# 437  
 Delta R.T. -0.09 min  
 Lab File: VU029379.D  
 Acq: 08 Feb 2019 15:01

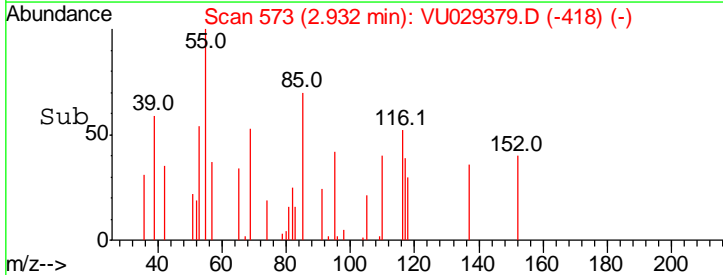
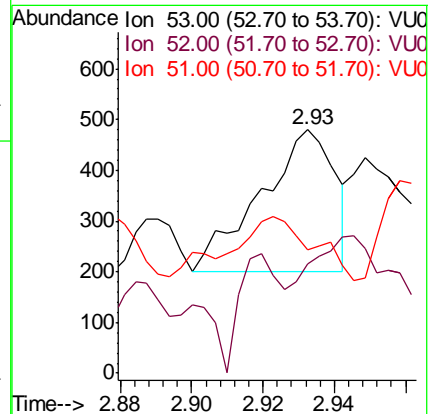
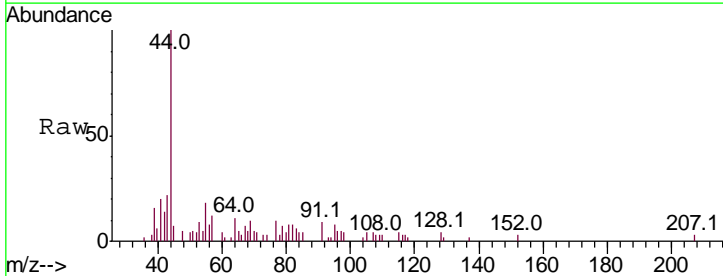
Instrument : MSVOA\_U  
 ClientSampled :

Tgt Ion	Resp	Lower	Upper
41	100		
39	72.8	67.2	100.8

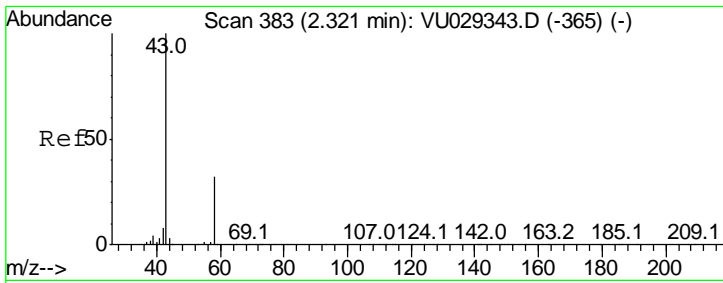


#12  
 Acrylonitrile  
 Concen: 0.110 ug/l  
 RT: 2.93 min Scan# 573  
 Delta R.T. -0.00 min  
 Lab File: VU029379.D  
 Acq: 08 Feb 2019 15:01

Tgt Ion	Resp	Lower	Upper
53	100		
52	115.8	67.6	101.4#
51	0.0	31.0	46.4#



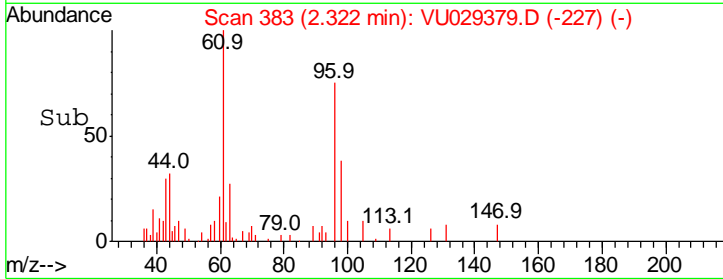
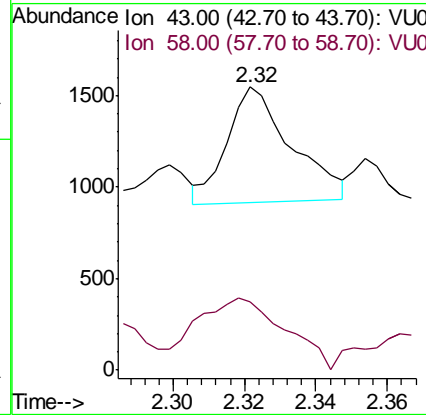
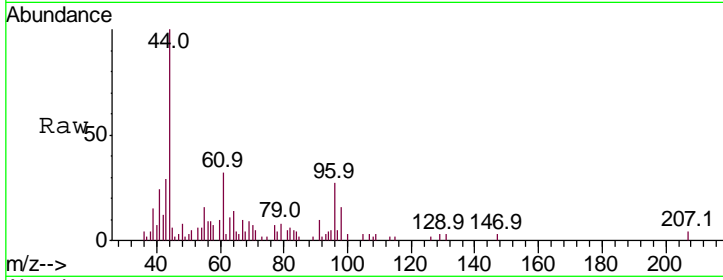




#13  
 Acetone  
 Concen: 0.219 ug/l  
 RT: 2.32 min Scan# 383  
 Delta R.T. 0.00 min  
 Lab File: VU029379.D  
 Acq: 08 Feb 2019 15:01

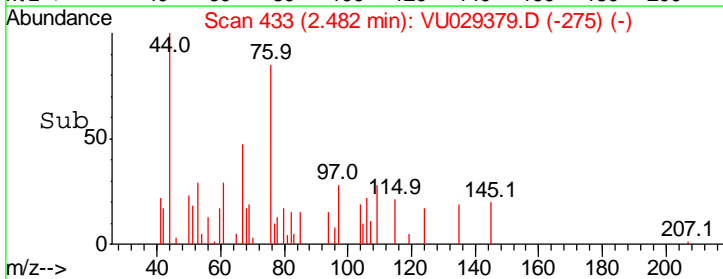
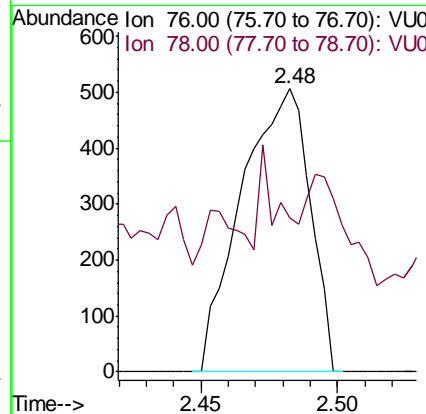
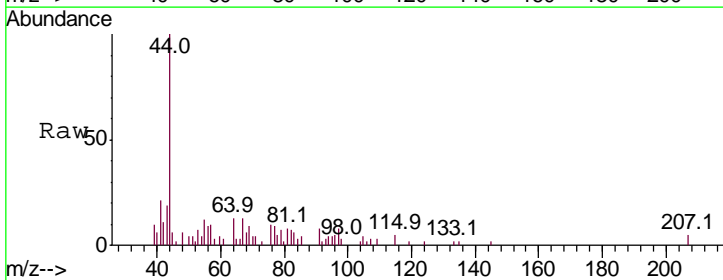
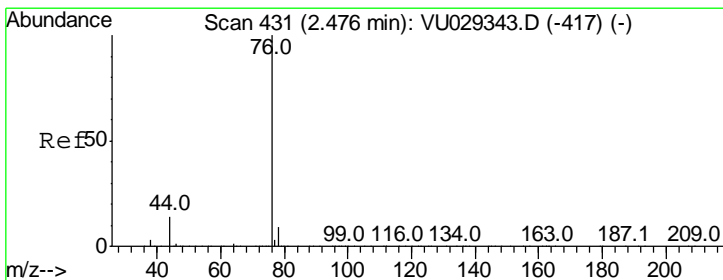
Instrument : MSVOA\_U  
 ClientSampled :

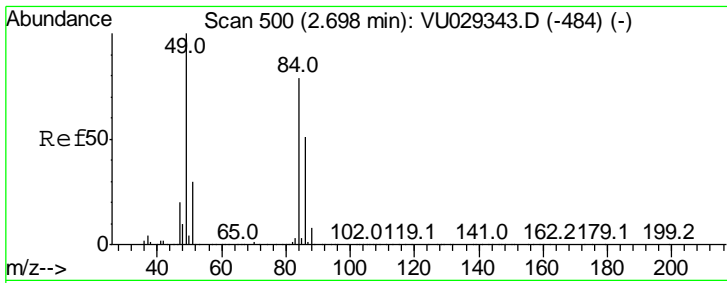
Tgt Ion	Ratio	Lower	Upper
43	100		
58	49.9	19.2	28.8#



#14  
 Carbon Disulfide  
 Concen: 0.015 ug/l  
 RT: 2.48 min Scan# 433  
 Delta R.T. 0.01 min  
 Lab File: VU029379.D  
 Acq: 08 Feb 2019 15:01

Tgt Ion	Ratio	Lower	Upper
76	100		
78	17.0	7.1	10.7#

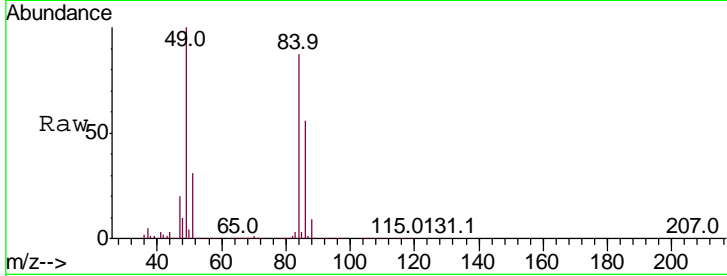




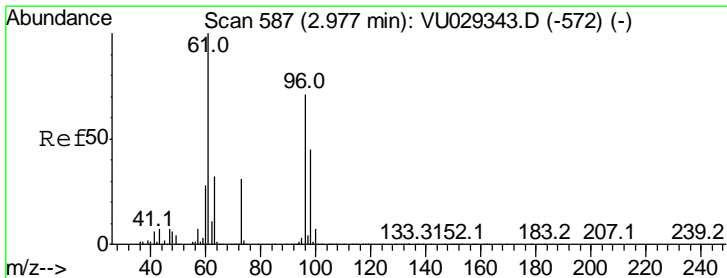
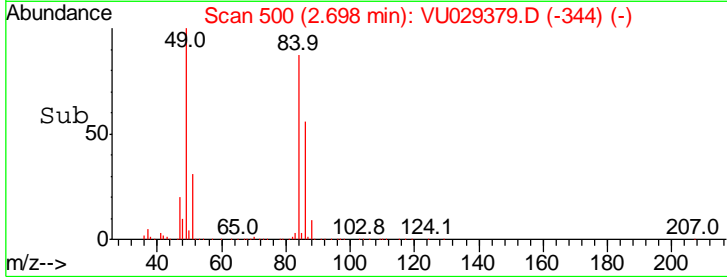
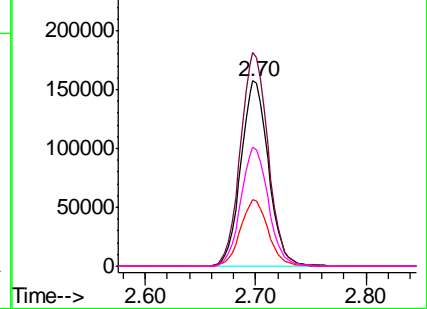
#15  
 Methylene Chloride  
 Concen: 13.592 ug/l  
 RT: 2.70 min Scan# 500  
 Delta R.T. 0.00 min  
 Lab File: VU029379.D  
 Acq: 08 Feb 2019 15:01

Instrument :  
 MSVOA\_U  
 ClientSampled :

Tgt Ion	Resp	Lower	Upper
84	100		
49	115.3	127.0	190.6#
51	35.7	0.0	93.4
86	64.3	50.6	75.8

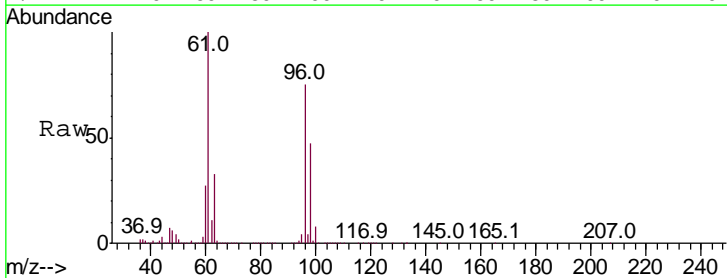


Abundance Ion 84.00 (83.70 to 84.70): VU0  
 Ion 49.00 (48.70 to 49.70): VU0  
 Ion 51.00 (50.70 to 51.70): VU0  
 Ion 86.00 (85.70 to 86.70): VU0

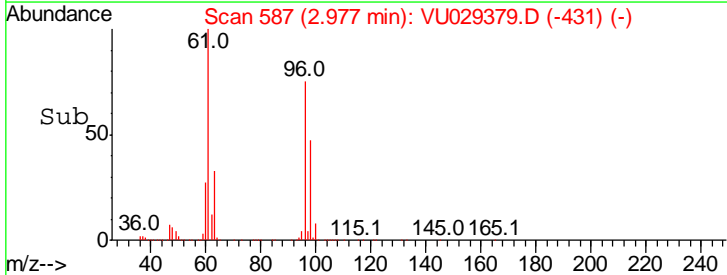
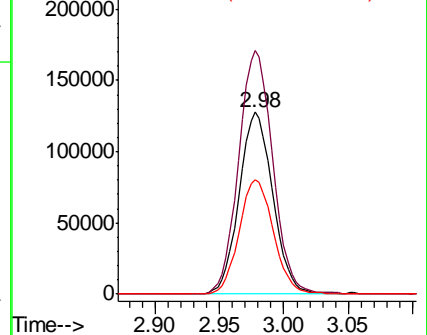


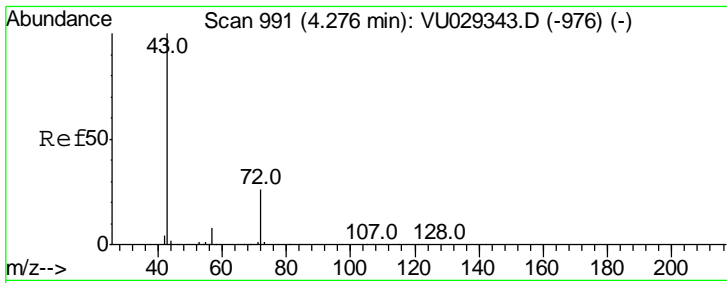
#16  
 trans-1,2-Dichloroethene  
 Concen: 12.562 ug/l  
 RT: 2.98 min Scan# 587  
 Delta R.T. 0.00 min  
 Lab File: VU029379.D  
 Acq: 08 Feb 2019 15:01

Tgt Ion	Resp	Lower	Upper
96	100		
61	134.0	140.6	210.8#
98	63.1	49.3	73.9



Abundance Ion 96.00 (95.70 to 96.70): VU0  
 Ion 61.00 (60.70 to 61.70): VU0  
 Ion 98.00 (97.70 to 98.70): VU0

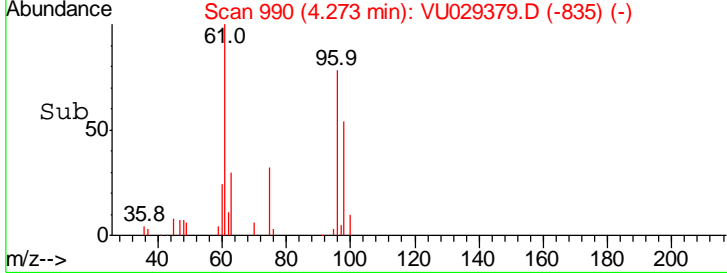
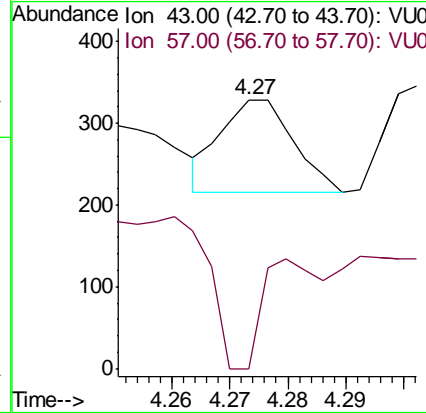
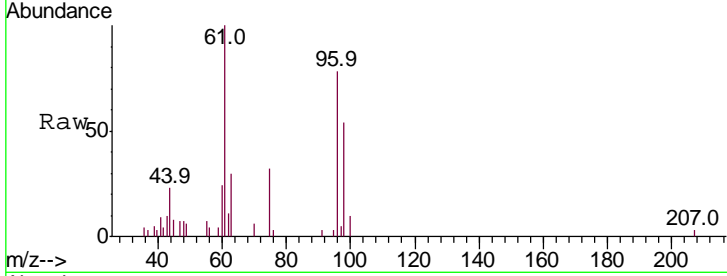




#18  
 2-Butanone  
 Concen: 0.025 ug/l  
 RT: 4.27 min Scan# 990  
 Delta R.T. -0.00 min  
 Lab File: VU029379.D  
 Acq: 08 Feb 2019 15:01

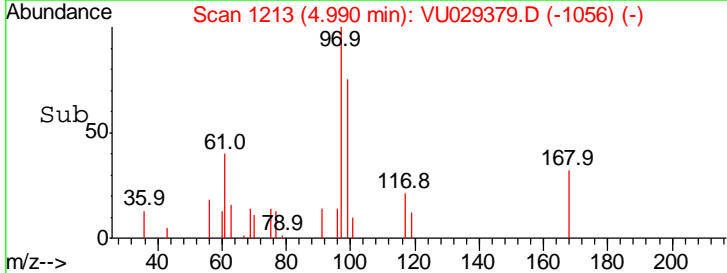
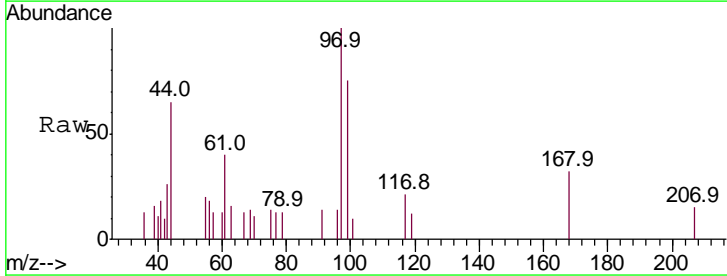
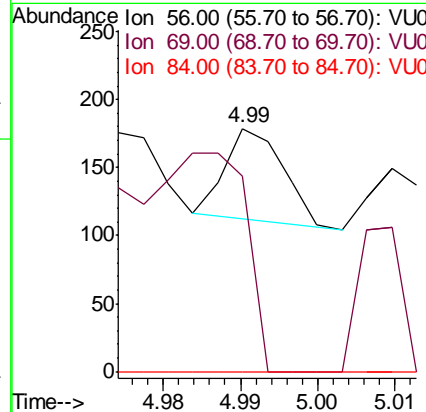
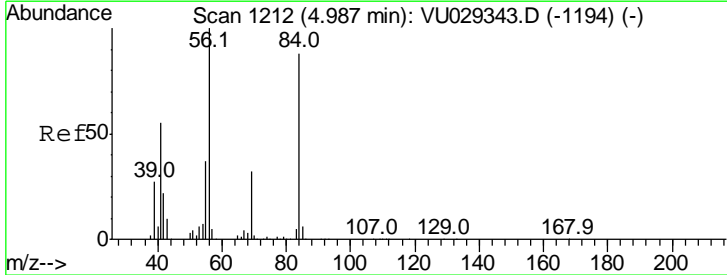
Instrument :  
 MSVOA\_U  
 ClientSampled :

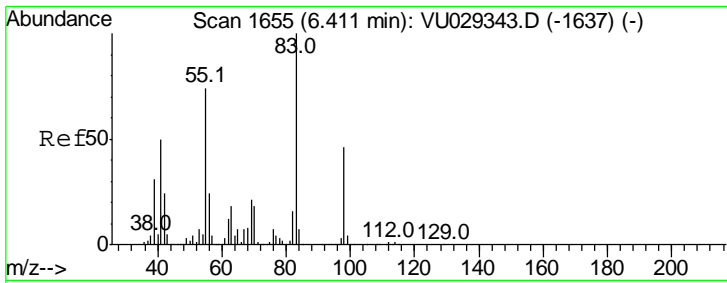
Tgt Ion	Ratio	Lower	Upper
43	100		
57	0.0	0.0	15.8



#19  
 Cyclohexane  
 Concen: 0.001 ug/l  
 RT: 4.99 min Scan# 1213  
 Delta R.T. 0.00 min  
 Lab File: VU029379.D  
 Acq: 08 Feb 2019 15:01

Tgt Ion	Ratio	Lower	Upper
56	100		
69	344.1	26.8	40.2#
84	0.0	71.5	107.3#

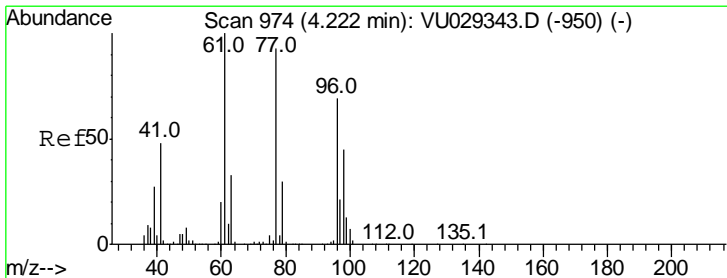
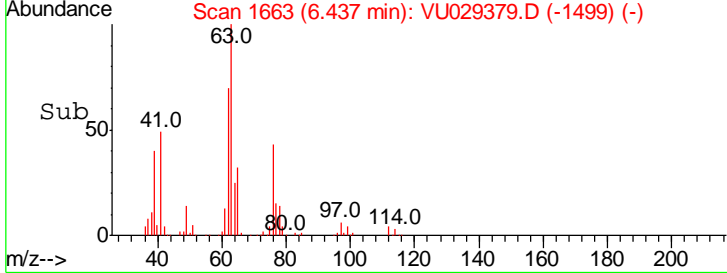
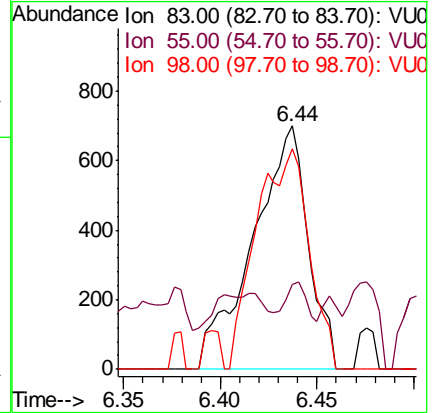
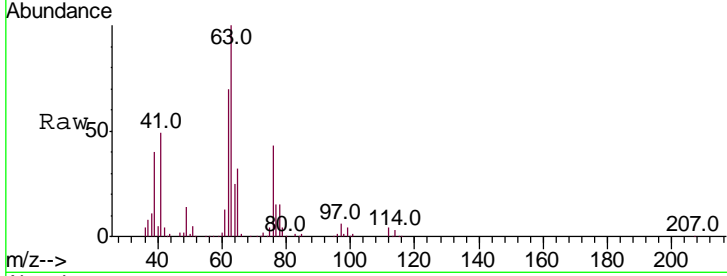




#20  
 Methylcyclohexane  
 Concen: 0.049 ug/l  
 RT: 6.44 min Scan# 1663  
 Delta R.T. 0.03 min  
 Lab File: VU029379.D  
 Acq: 08 Feb 2019 15:01

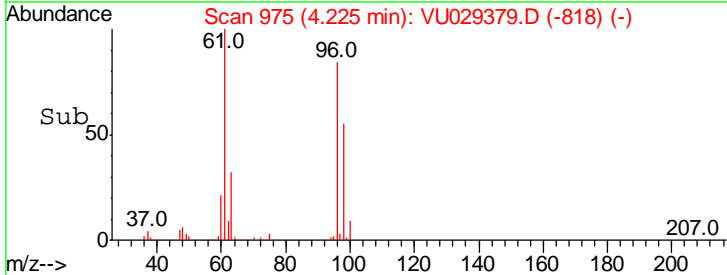
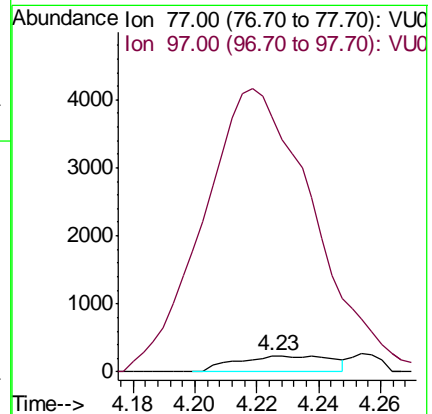
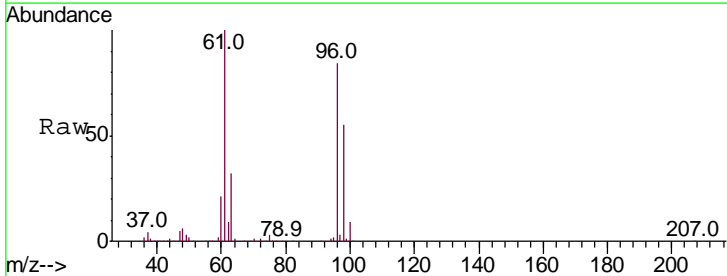
Instrument :  
 MSVOA\_U  
 ClientSampled :

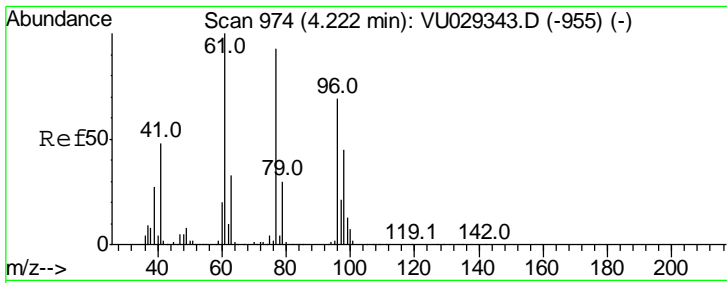
Tgt Ion	Resp	Lower	Upper
83	1383		
55	4.3	72.4	108.6#
98	87.0	36.6	54.8#



#21  
 2,2-Dichloropropane  
 Concen: 0.019 ug/l  
 RT: 4.23 min Scan# 975  
 Delta R.T. 0.00 min  
 Lab File: VU029379.D  
 Acq: 08 Feb 2019 15:01

Tgt Ion	Resp	Lower	Upper
77	513		
97	2016.8	15.6	23.4#

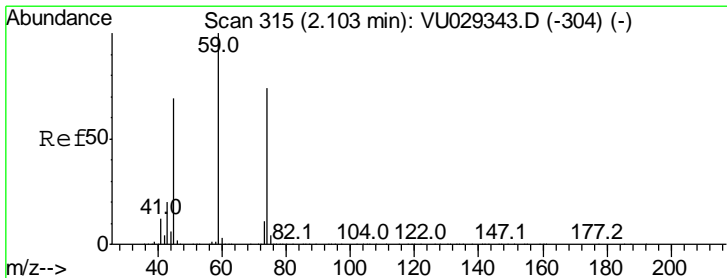
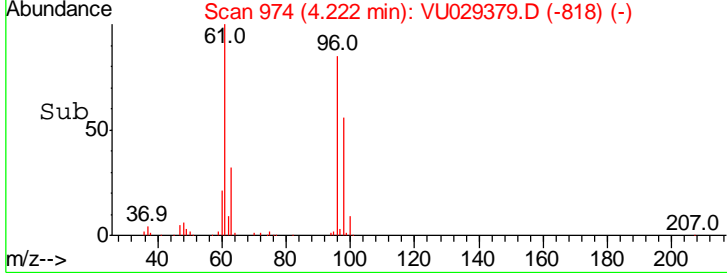
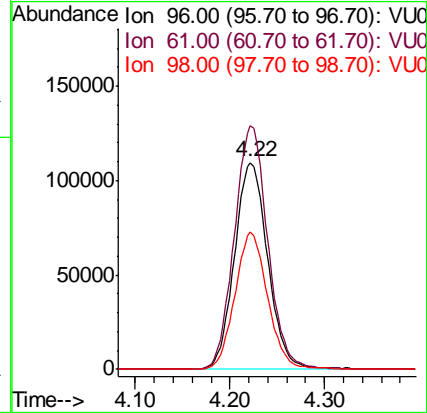
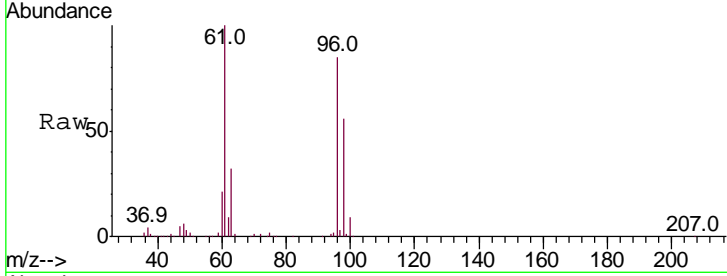




#22  
 cis-1,2-Dichloroethene  
 Concen: 15.459 ug/l  
 RT: 4.22 min Scan# 974  
 Delta R.T. 0.00 min  
 Lab File: VU029379.D  
 Acq: 08 Feb 2019 15:01

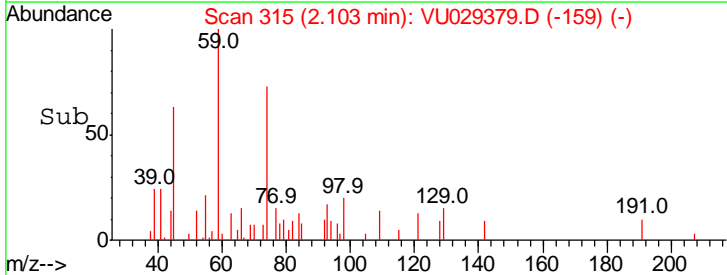
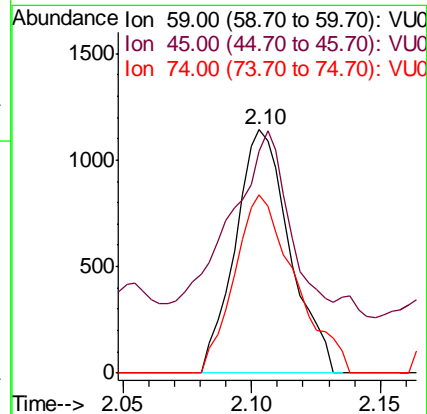
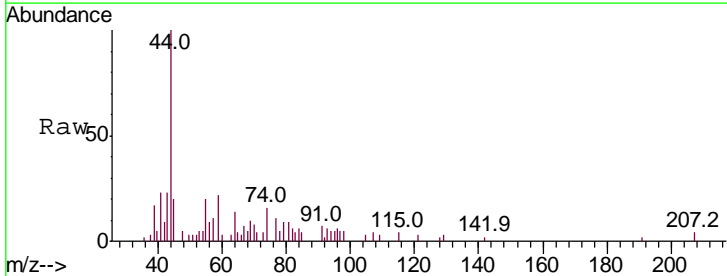
Instrument :  
 MSVOA\_U  
 ClientSampled :

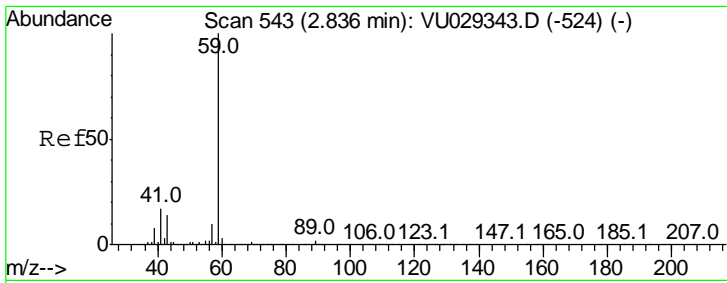
Tgt Ion	Resp	Lower	Upper
96	100		
61	118.1	0.0	460.0
98	64.7	32.6	97.7



#23  
 Diethyl Ether  
 Concen: 0.127 ug/l  
 RT: 2.10 min Scan# 315  
 Delta R.T. 0.00 min  
 Lab File: VU029379.D  
 Acq: 08 Feb 2019 15:01

Tgt Ion	Resp	Lower	Upper
59	100		
45	70.1	64.2	96.4
74	81.8	55.3	82.9

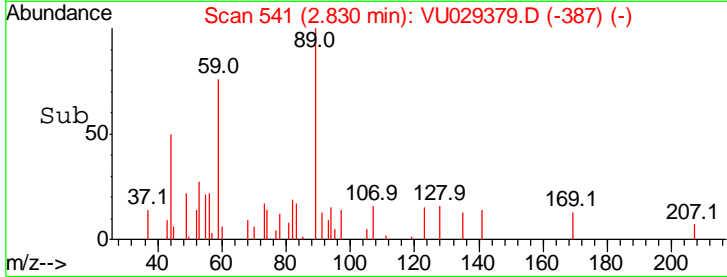
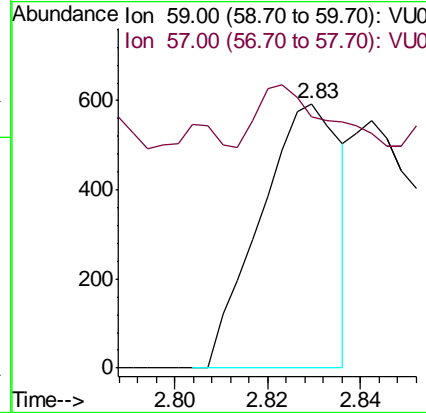
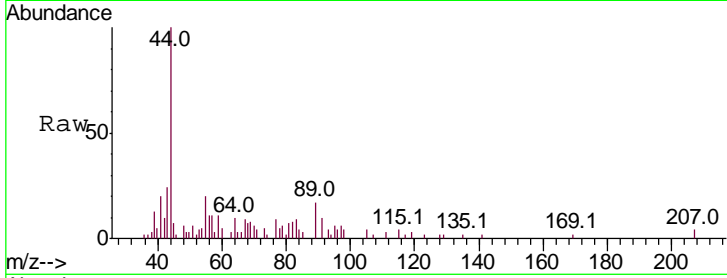




#24  
 tert-Butyl Alcohol  
 Concen: 0.520 ug/l  
 RT: 2.83 min Scan# 541  
 Delta R.T. -0.01 min  
 Lab File: VU029379.D  
 Acq: 08 Feb 2019 15:01

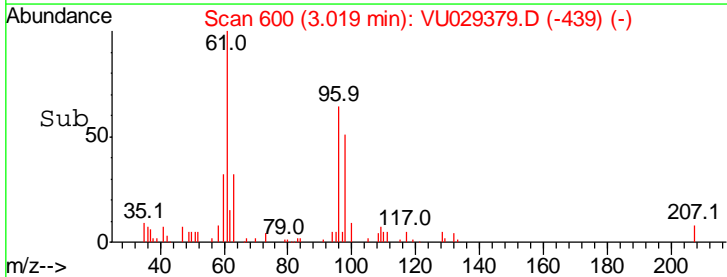
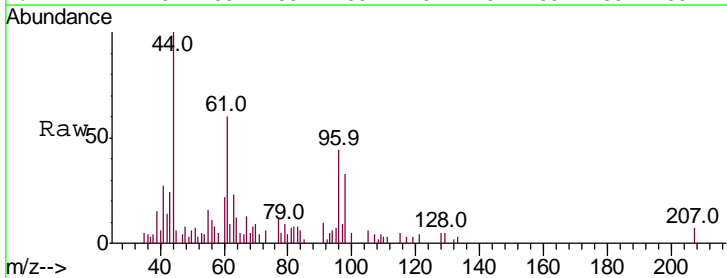
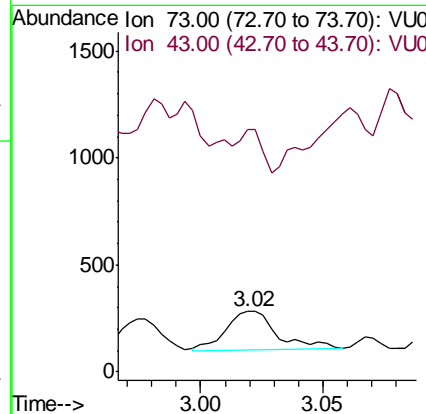
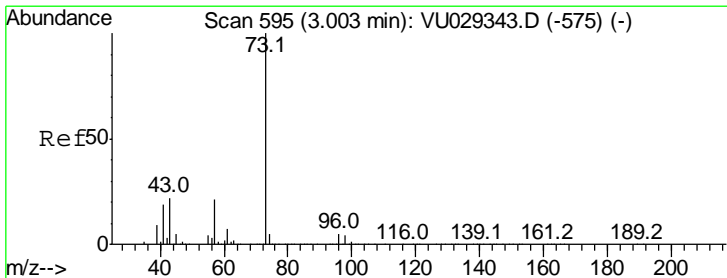
Instrument :  
 MSVOA\_U  
 ClientSampled :

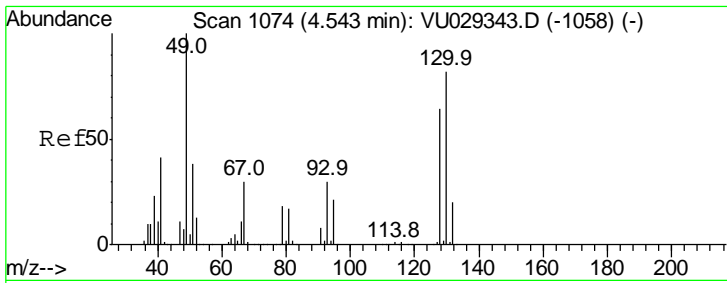
Tgt Ion: 59 Resp: 714  
 Ion Ratio Lower Upper  
 59 100  
 57 28.0 8.8 13.2#



#25  
 Methyl tert-Butyl Ether  
 Concen: 0.006 ug/l  
 RT: 3.02 min Scan# 600  
 Delta R.T. 0.02 min  
 Lab File: VU029379.D  
 Acq: 08 Feb 2019 15:01

Tgt Ion: 73 Resp: 267  
 Ion Ratio Lower Upper  
 73 100  
 43 0.0 22.1 33.1#

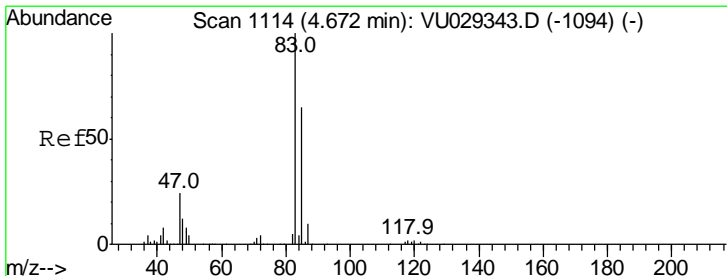
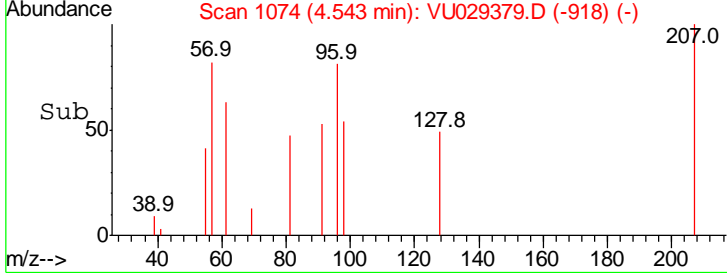
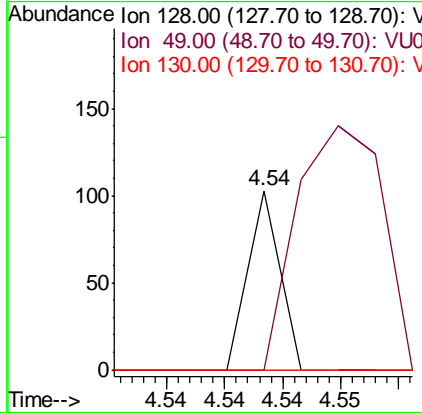
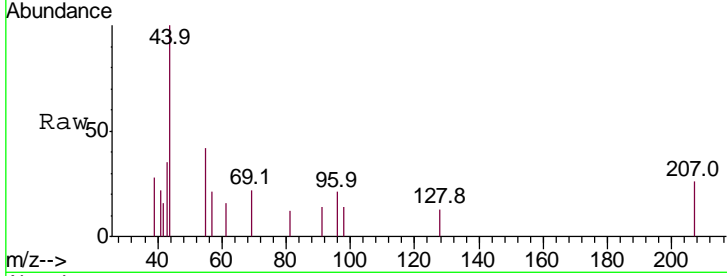




#26  
 Bromochloromethane  
 Concen: 0.003 ug/l  
 RT: 4.54 min Scan# 1074  
 Delta R.T. 0.00 min  
 Lab File: VU029379.D  
 Acq: 08 Feb 2019 15:01

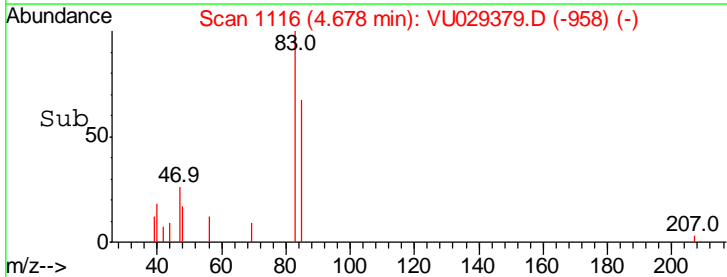
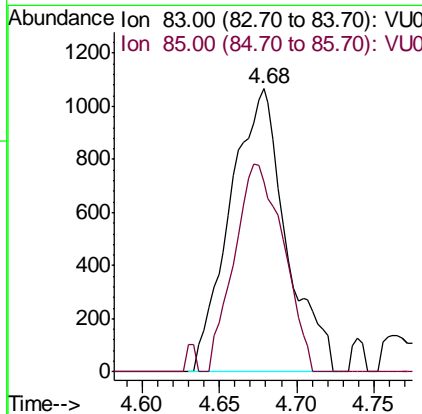
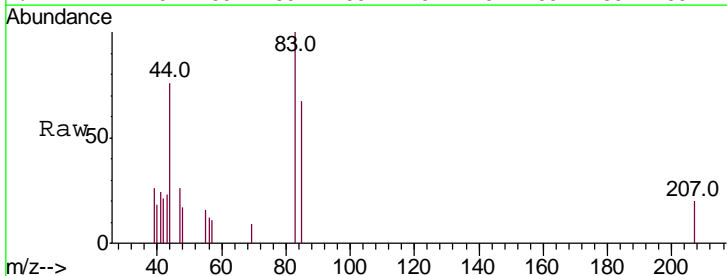
Instrument :  
 MSVOA\_U  
 ClientSampled :

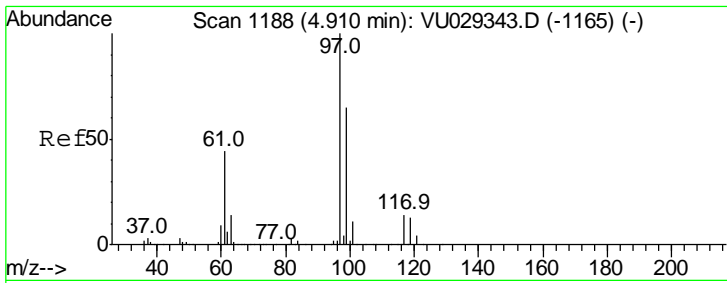
Tgt Ion	Ratio	Lower	Upper
128	100		
49	0.0	0.0	401.6
130	0.0	108.0	162.0#



#27  
 Chloroform  
 Concen: 0.095 ug/l  
 RT: 4.68 min Scan# 1116  
 Delta R.T. 0.01 min  
 Lab File: VU029379.D  
 Acq: 08 Feb 2019 15:01

Tgt Ion	Ratio	Lower	Upper
83	100		
85	67.3	0.0	126.6

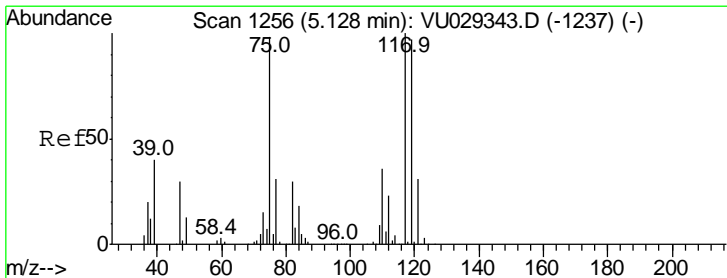
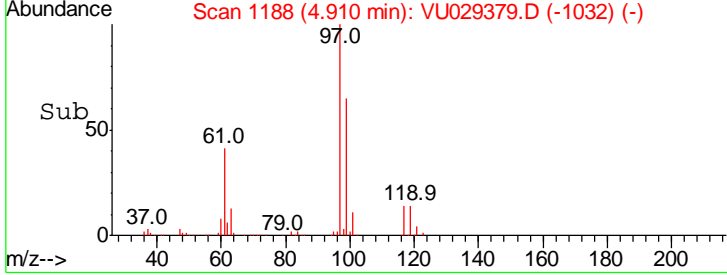
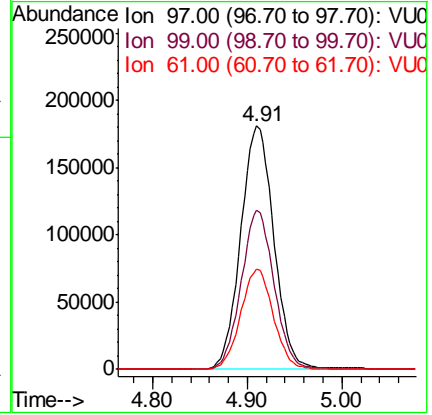
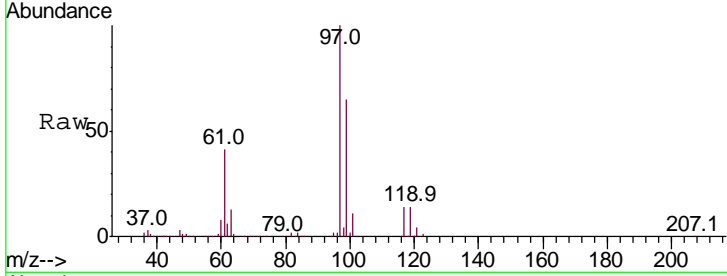




#28  
 1,1,1-Trichloroethane  
 Concen: 16.786 ug/l  
 RT: 4.91 min Scan# 1188  
 Delta R.T. 0.00 min  
 Lab File: VU029379.D  
 Acq: 08 Feb 2019 15:01

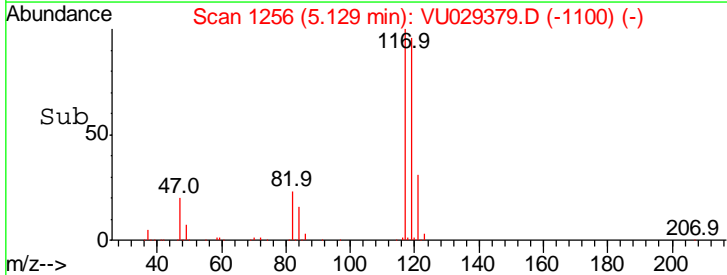
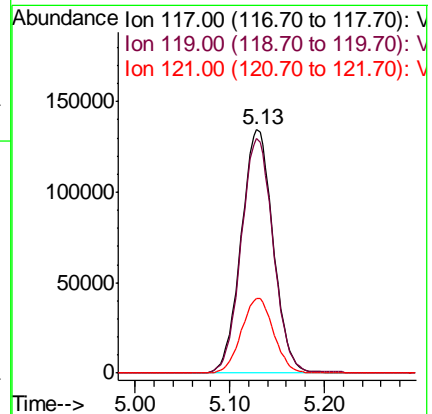
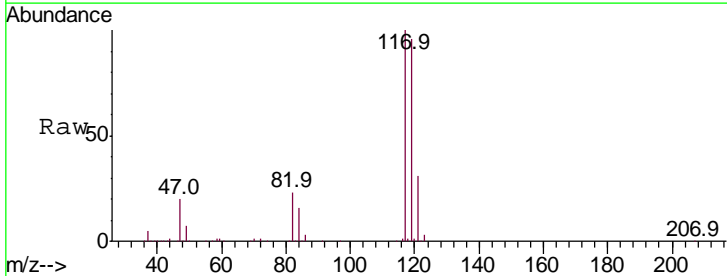
Instrument :  
 MSVOA\_U  
 ClientSampled :

Tgt Ion	Resp	Lower	Upper
97	100		
99	64.8	32.4	97.2
61	40.7	24.4	73.2

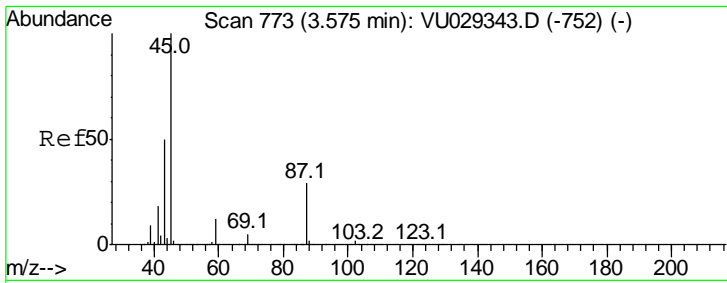


#30  
 Carbon Tetrachloride  
 Concen: 13.305 ug/l  
 RT: 5.13 min Scan# 1256  
 Delta R.T. 0.00 min  
 Lab File: VU029379.D  
 Acq: 08 Feb 2019 15:01

Tgt Ion	Resp	Lower	Upper
117	100		
119	96.2	76.8	115.2
121	30.8	24.4	36.6



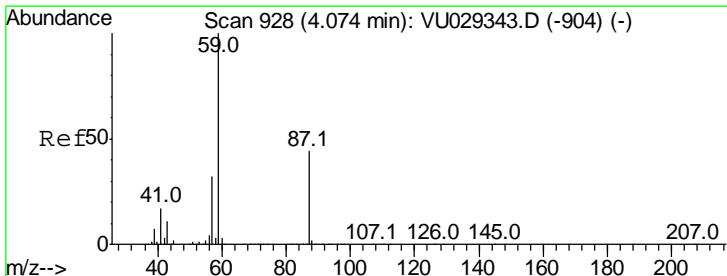
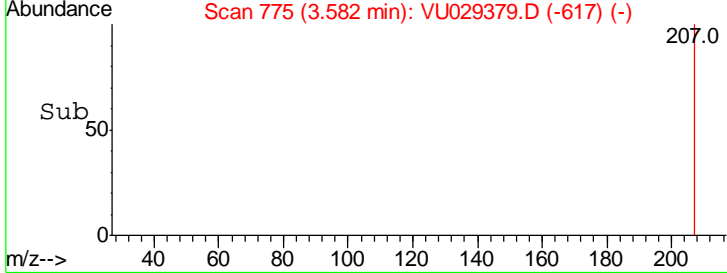
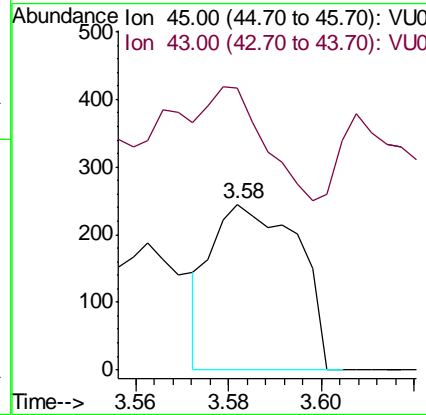
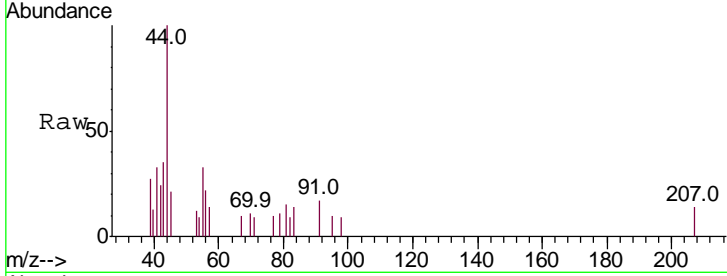




#31  
 Isopropyl Ether  
 Concen: 0.007 ug/l  
 RT: 3.58 min Scan# 775  
 Delta R.T. 0.01 min  
 Lab File: VU029379.D  
 Acq: 08 Feb 2019 15:01

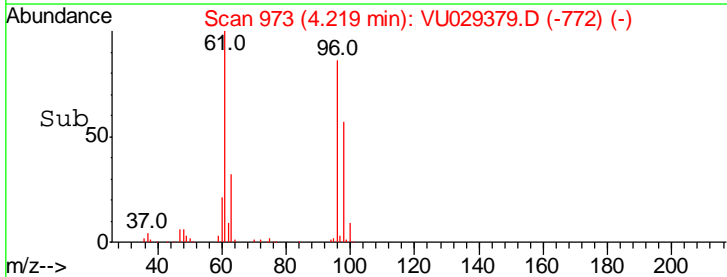
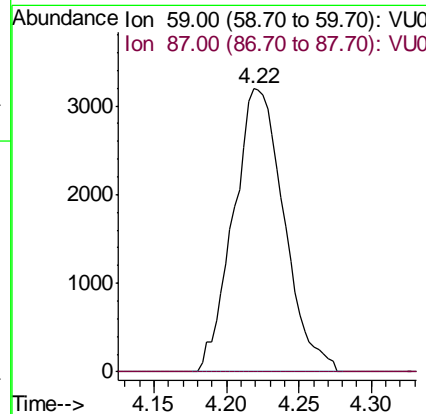
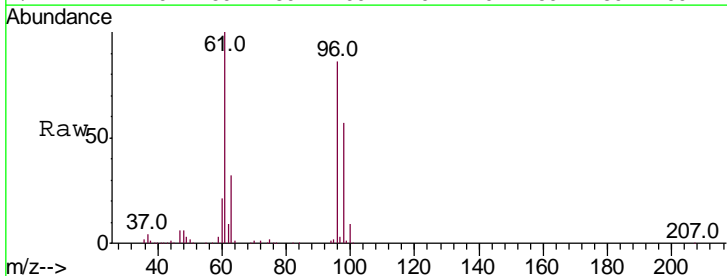
Instrument : MSVOA\_U  
 ClientSampled :

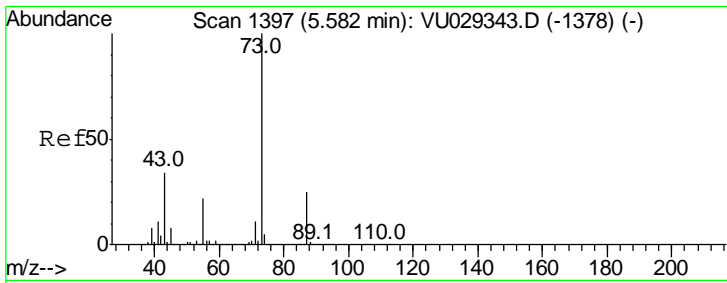
Tgt Ion:	45	Resp:	315
Ion Ratio	Lower	Upper	
45	100		
43	74.3	28.4	85.3



#32  
 Ethyl-t-butyl ether  
 Concen: 0.176 ug/l  
 RT: 4.22 min Scan# 973  
 Delta R.T. 0.14 min  
 Lab File: VU029379.D  
 Acq: 08 Feb 2019 15:01

Tgt Ion:	59	Resp:	7760
Ion Ratio	Lower	Upper	
59	100		
87	0.0	31.1	46.7#

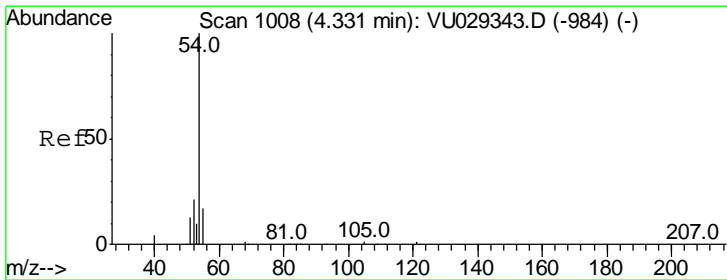
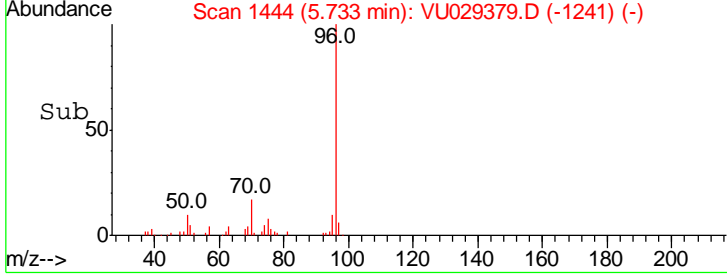
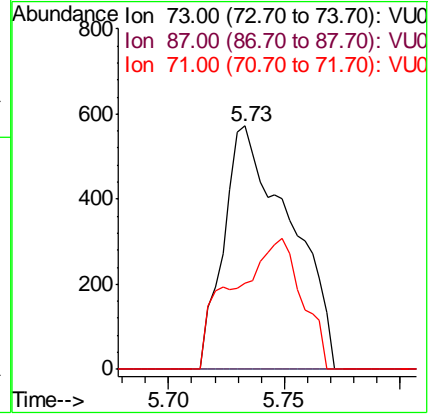
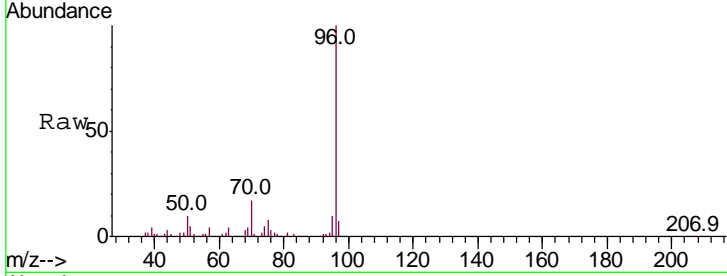




#33  
 Tert-Amvl methyl ether  
 Concen: 0.029 ug/l  
 RT: 5.73 min Scan# 1444  
 Delta R.T. 0.15 min  
 Lab File: VU029379.D  
 Acq: 08 Feb 2019 15:01

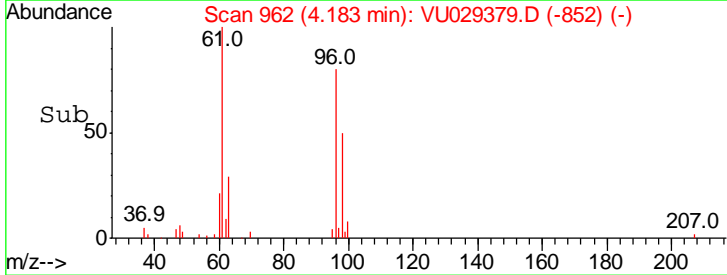
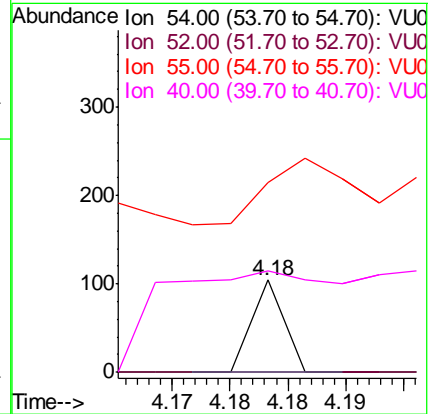
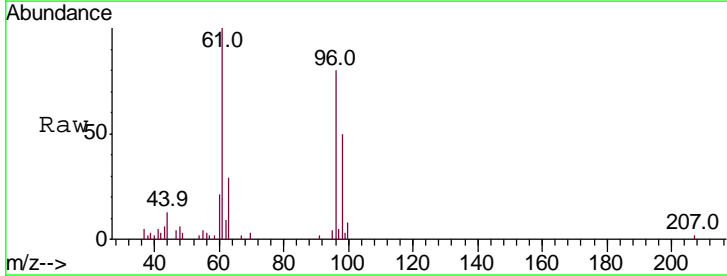
Instrument : MSVOA\_U  
 ClientSampled :

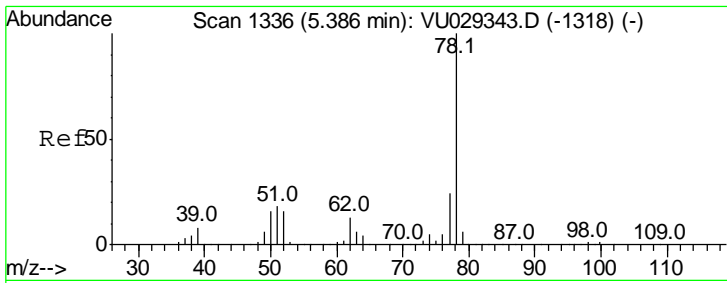
Tgt Ion	Resp	Lower	Upper
73	100		
87	0.0	19.4	29.0#
71	55.7	9.0	13.4#



#34  
 Propionitrile  
 Concen: 0.019 ug/l  
 RT: 4.18 min Scan# 962  
 Delta R.T. -0.15 min  
 Lab File: VU029379.D  
 Acq: 08 Feb 2019 15:01

Tgt Ion	Resp	Lower	Upper
54	100		
52	0.0	18.9	28.3#
55	195.0	15.1	22.7#
40	605.0	7.2	10.8#

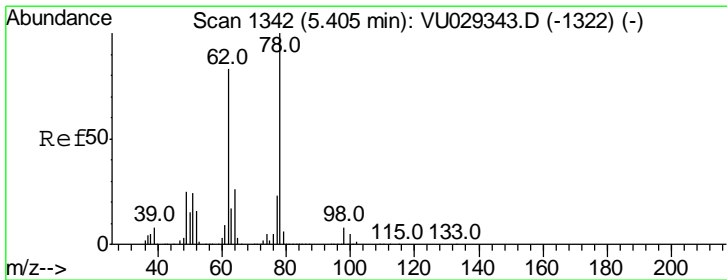
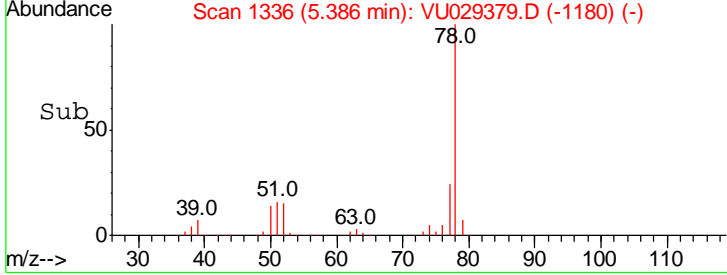
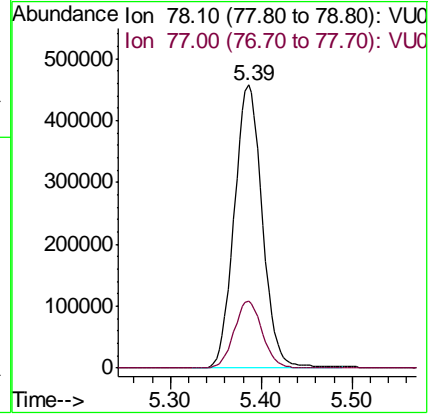
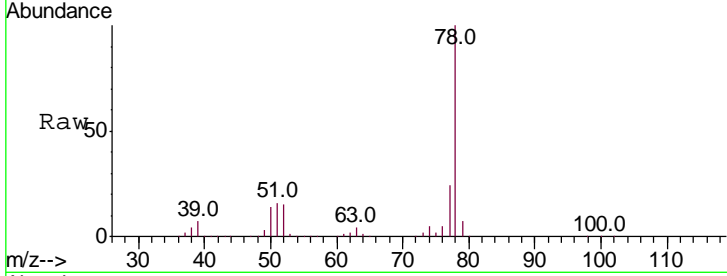




#35  
Benzene  
Concen: 15.554 ug/l  
RT: 5.39 min Scan# 1336  
Delta R.T. 0.00 min  
Lab File: VU029379.D  
Acq: 08 Feb 2019 15:01

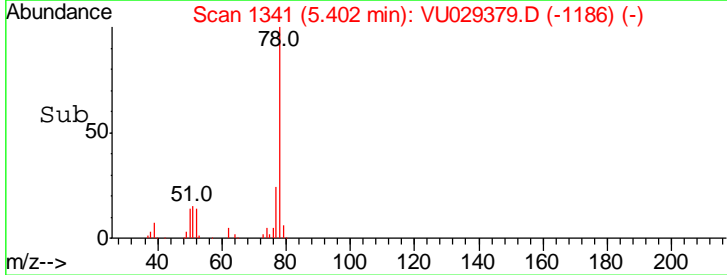
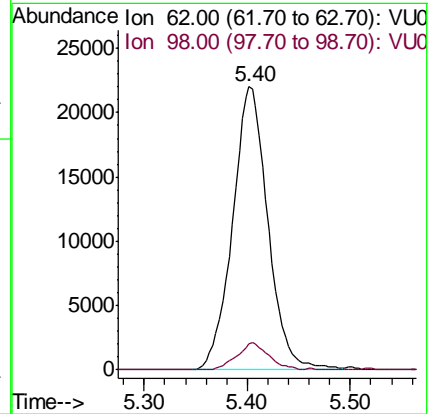
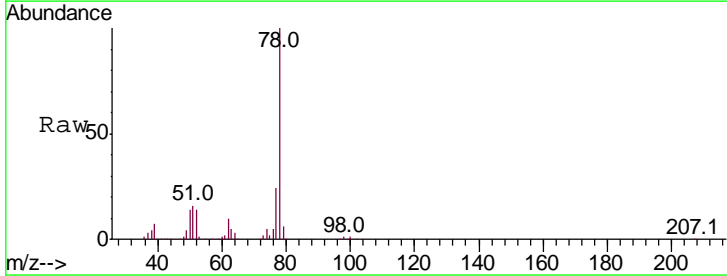
Instrument :  
MSVOA\_U  
ClientSampled :

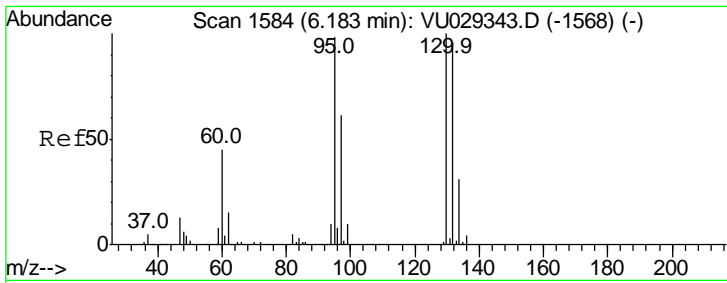
Tgt Ion	Resp	Lower	Upper
78	100		
77	23.7	19.8	29.8



#36  
1,2-Dichloroethane  
Concen: 2.748 ug/l  
RT: 5.40 min Scan# 1341  
Delta R.T. -0.00 min  
Lab File: VU029379.D  
Acq: 08 Feb 2019 15:01

Tgt Ion	Resp	Lower	Upper
62	100		
98	8.7	4.9	7.3#

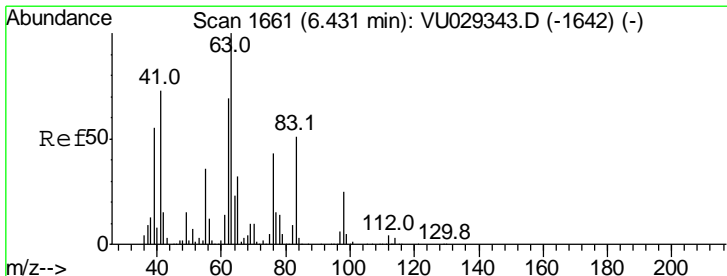
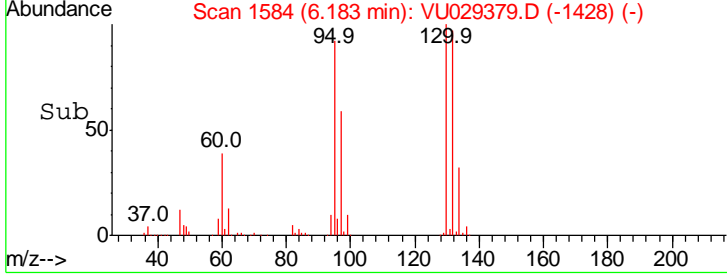
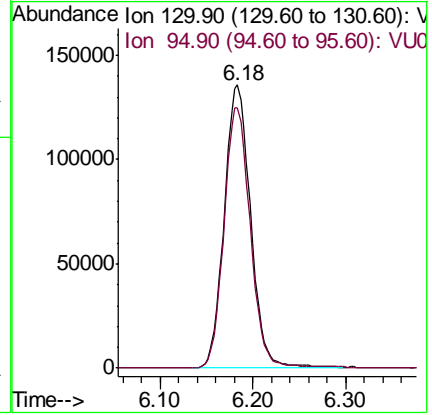
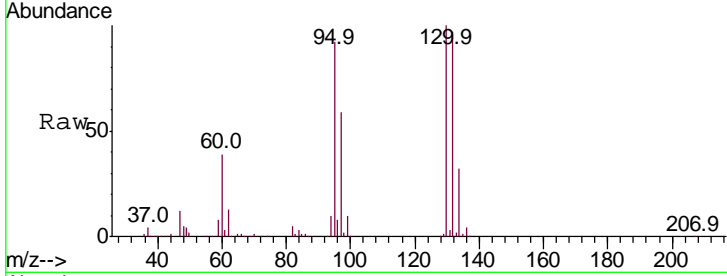




#37  
 Trichloroethene  
 Concen: 14.804 ug/l  
 RT: 6.18 min Scan# 1584  
 Delta R.T. 0.00 min  
 Lab File: VU029379.D  
 Acq: 08 Feb 2019 15:01

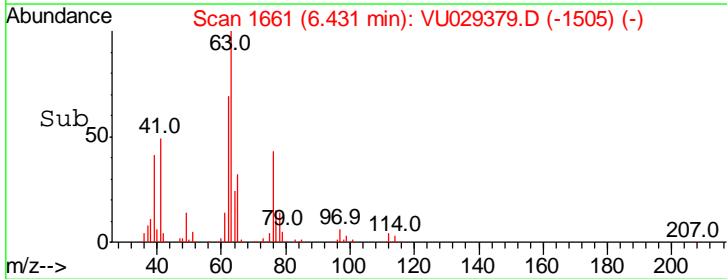
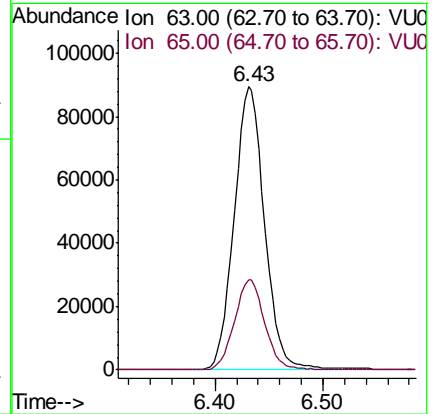
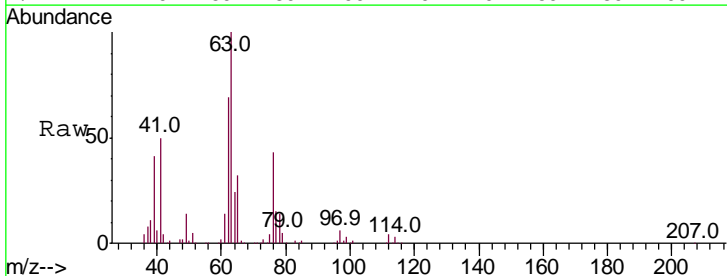
Instrument :  
 MSVOA\_U  
 ClientSampled :

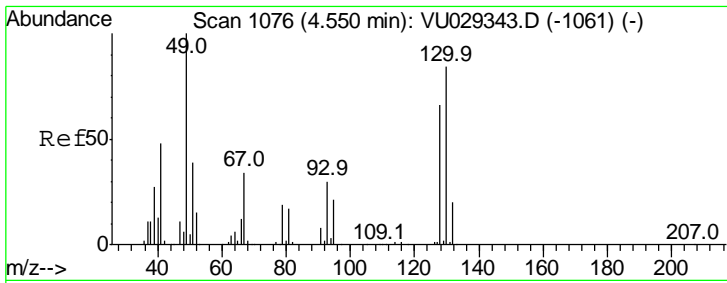
Tgt Ion	Resp	Lower	Upper
130	100		
95	92.1	85.4	128.0



#38  
 1,2-Dichloropropane  
 Concen: 10.680 ug/l  
 RT: 6.43 min Scan# 1661  
 Delta R.T. 0.00 min  
 Lab File: VU029379.D  
 Acq: 08 Feb 2019 15:01

Tgt Ion	Resp	Lower	Upper
63	100		
65	31.8	25.5	38.3

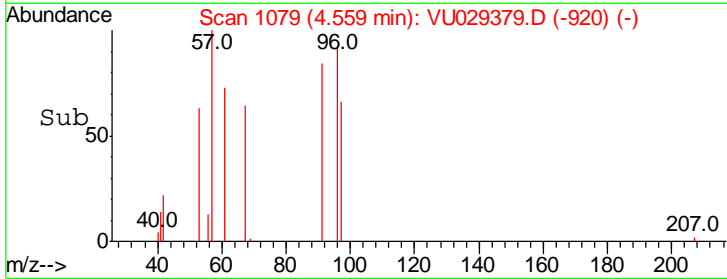
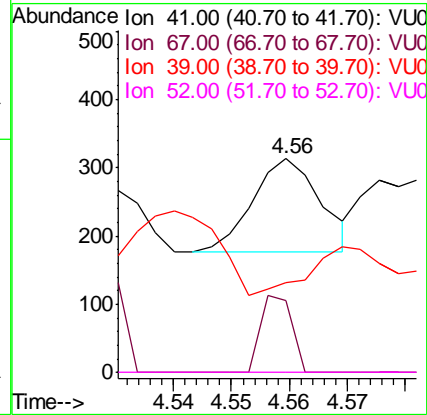
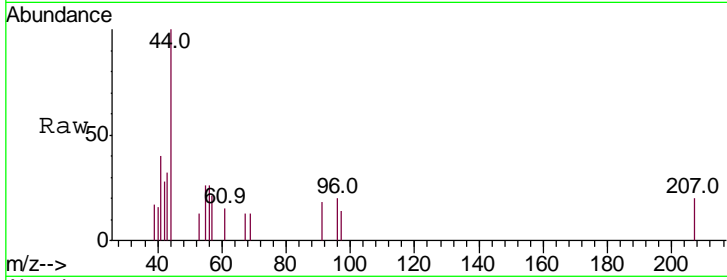




#39  
 Methacrylonitrile  
 Concen: 0.021 ug/l  
 RT: 4.56 min Scan# 1079  
 Delta R.T. 0.01 min  
 Lab File: VU029379.D  
 Acq: 08 Feb 2019 15:01

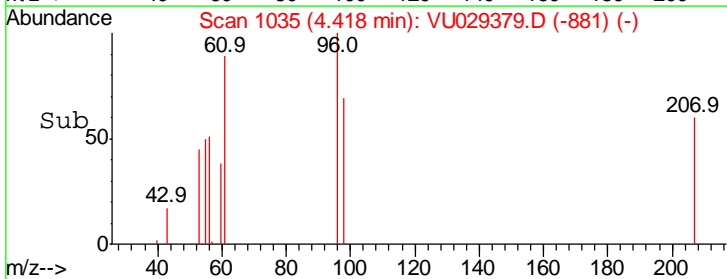
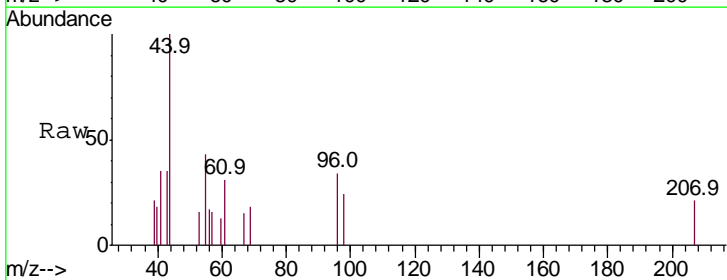
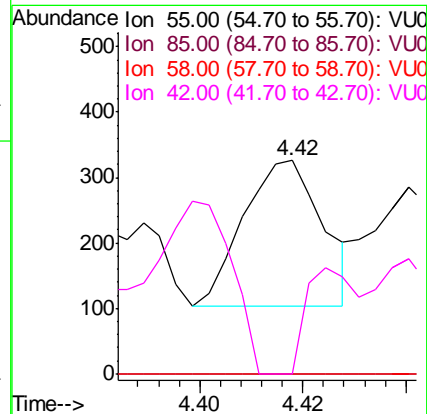
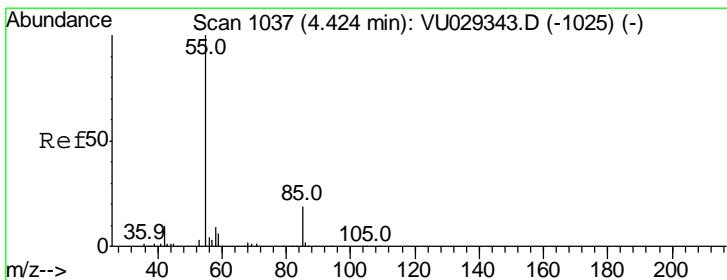
Instrument : MSVOA\_U  
 ClientSampled :

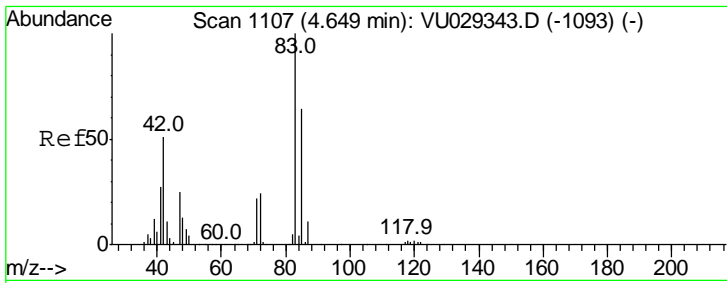
Tgt Ion	Resp	Lower	Upper
41	100		
67	38.2	50.1	75.1#
39	180.0	47.9	71.9#
52	0.0	24.8	37.2#



#40  
 Methyl acrylate  
 Concen: 0.029 ug/l  
 RT: 4.42 min Scan# 1035  
 Delta R.T. -0.01 min  
 Lab File: VU029379.D  
 Acq: 08 Feb 2019 15:01

Tgt Ion	Resp	Lower	Upper
55	100		
85	0.0	11.3	16.9#
58	0.0	6.2	9.4#
42	46.2	10.1	15.1#

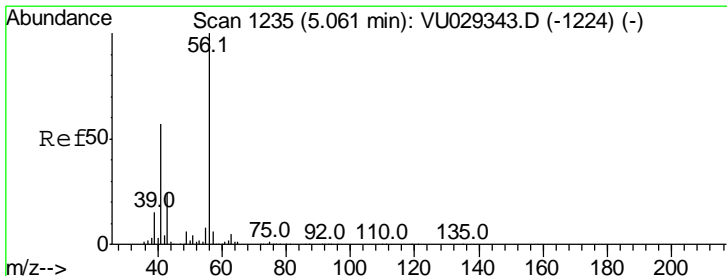
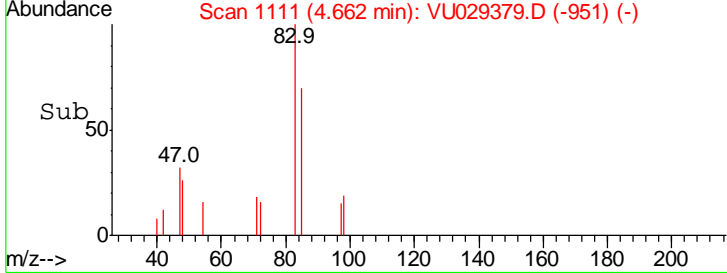
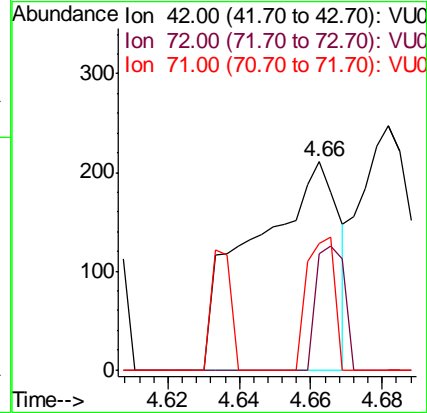
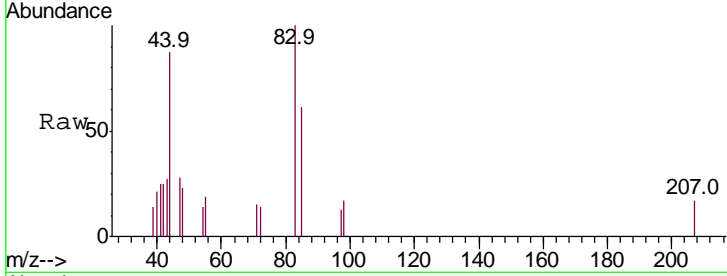




#41  
 Tetrahydrofuran  
 Concen: 0.129 ug/l  
 RT: 4.66 min Scan# 1111  
 Delta R.T. 0.01 min  
 Lab File: VU029379.D  
 Acq: 08 Feb 2019 15:01

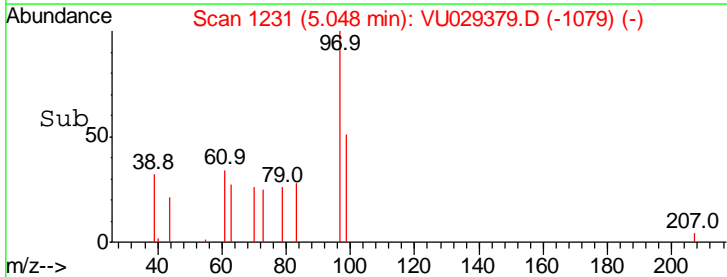
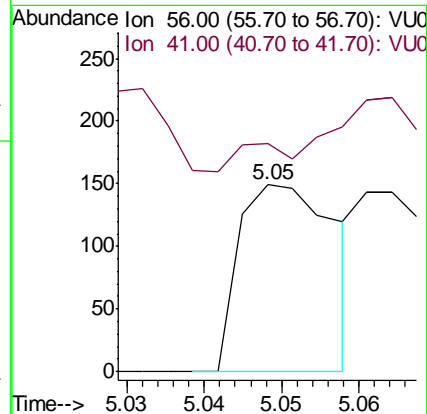
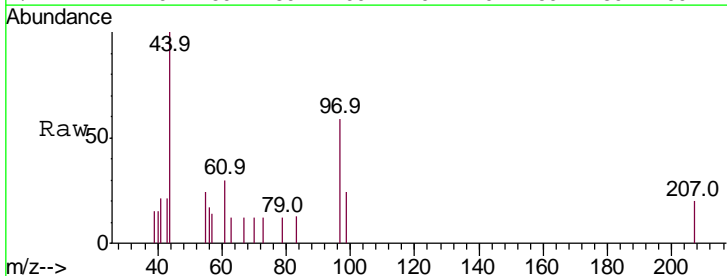
Instrument : MSVOA\_U  
 ClientSampled :

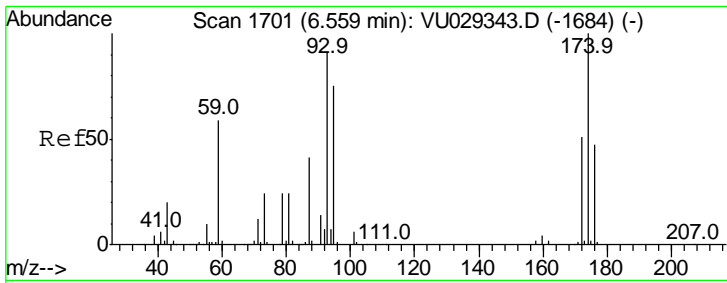
Tgt Ion	Ratio	Lower	Upper
42	100		
72	0.0	33.1	49.7#
71	20.7	30.2	45.2#



#42  
 1-Chlorobutane  
 Concen: 0.004 ug/l  
 RT: 5.05 min Scan# 1231  
 Delta R.T. -0.01 min  
 Lab File: VU029379.D  
 Acq: 08 Feb 2019 15:01

Tgt Ion	Ratio	Lower	Upper
56	100		
41	41.9	31.3	93.8

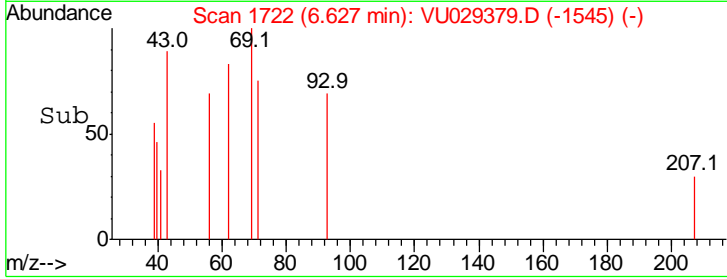
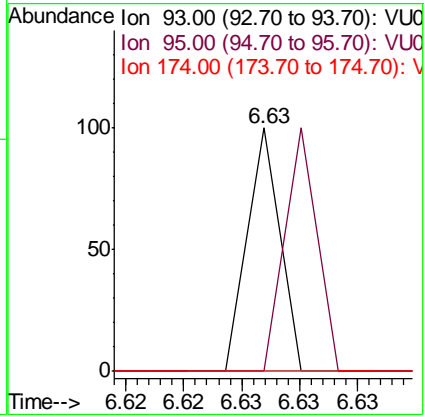
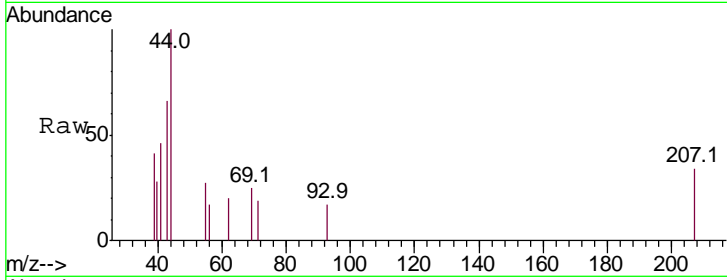




#43  
 Dibromomethane  
 Concen: 0.002 ug/l  
 RT: 6.63 min Scan# 1722  
 Delta R.T. 0.07 min  
 Lab File: VU029379.D  
 Acq: 08 Feb 2019 15:01

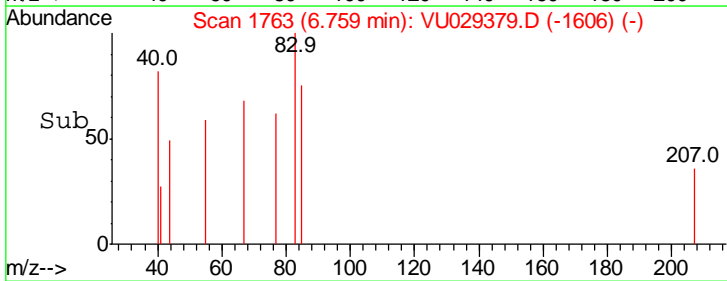
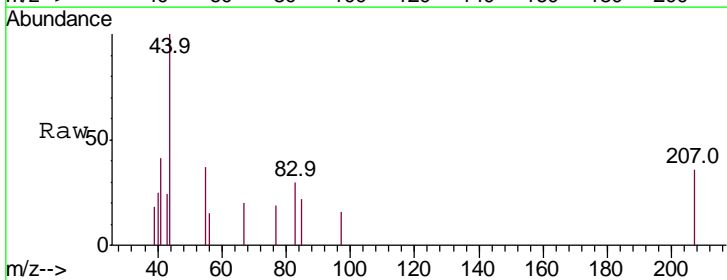
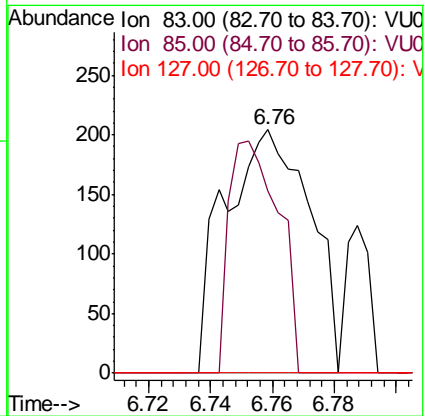
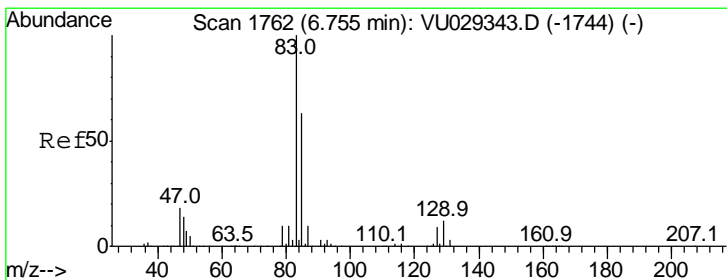
Instrument :  
 MSVOA\_U  
 ClientSampled :

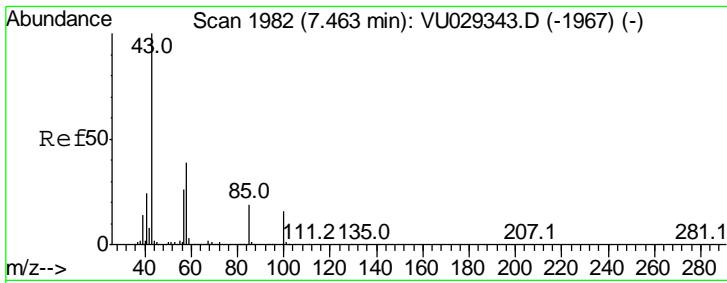
Tgt Ion	Resp	Lower	Upper
93	100		
95	0.0	68.2	102.2#
174	0.0	77.6	116.4#



#44  
 Bromodichloromethane  
 Concen: 0.018 ug/l  
 RT: 6.76 min Scan# 1763  
 Delta R.T. 0.00 min  
 Lab File: VU029379.D  
 Acq: 08 Feb 2019 15:01

Tgt Ion	Resp	Lower	Upper
83	100		
85	75.0	49.2	73.8#
127	0.0	7.0	10.6#

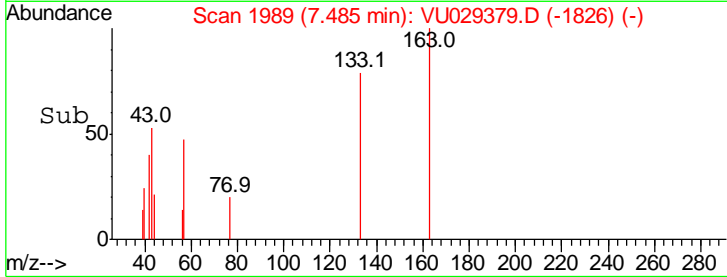
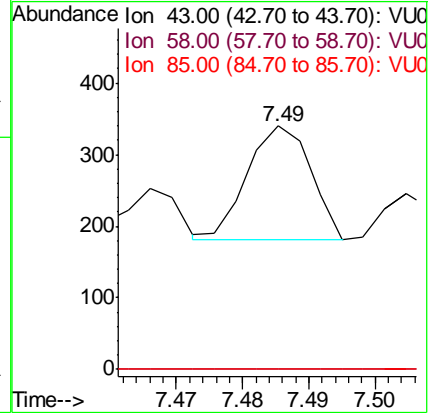
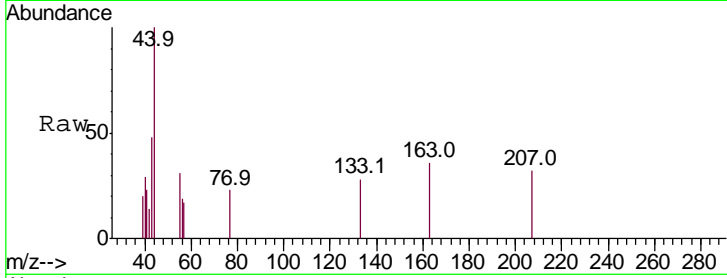




#45  
 4-Methyl-2-Pentanone  
 Concen: 0.010 ug/l  
 RT: 7.49 min Scan# 1989  
 Delta R.T. 0.02 min  
 Lab File: VU029379.D  
 Acq: 08 Feb 2019 15:01

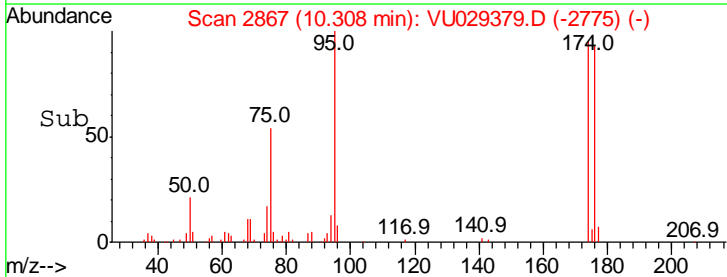
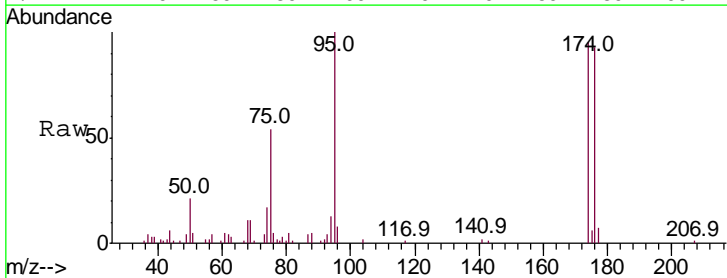
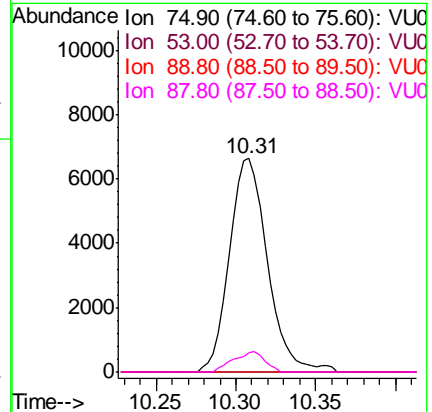
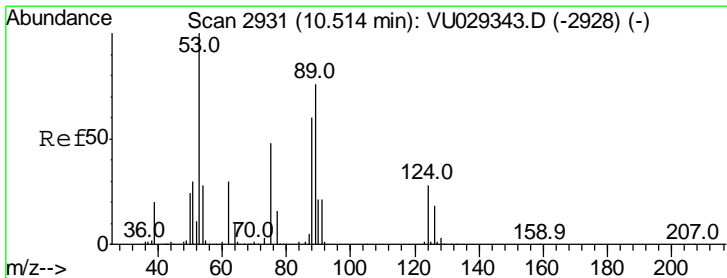
Instrument : MSVOA\_U  
 ClientSampled :

Tgt Ion	Ratio	Lower	Upper
43	100		
58	0.0	17.6	52.8#
85	0.0	12.3	18.5#

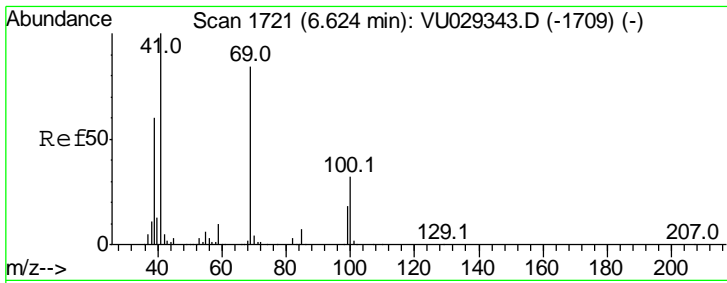


#46  
 t-1,4-Dichloro-2-butene  
 Concen: 2.156 ug/l  
 RT: 10.31 min Scan# 2867  
 Delta R.T. -0.21 min  
 Lab File: VU029379.D  
 Acq: 08 Feb 2019 15:01

Tgt Ion	Ratio	Lower	Upper
75	100		
53	0.0	78.2	117.4#
89	0.0	44.2	66.4#
88	7.8	41.4	62.2#



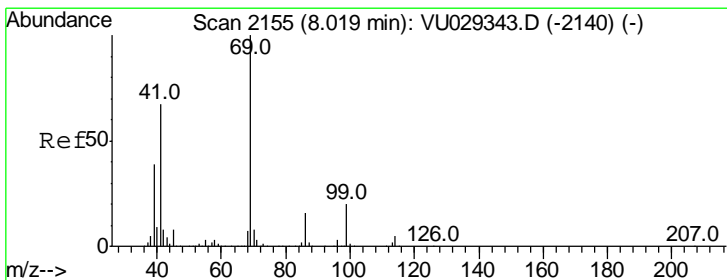
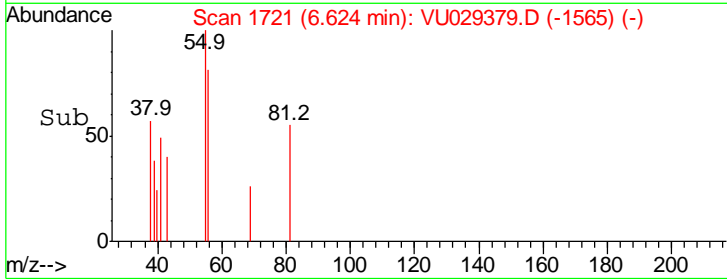
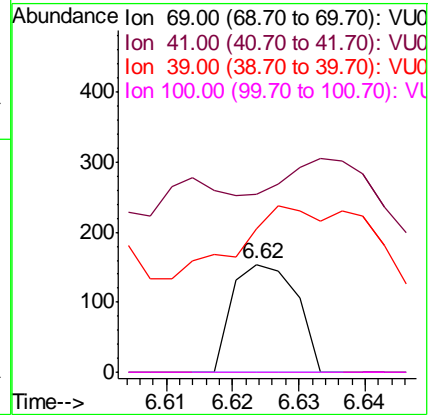
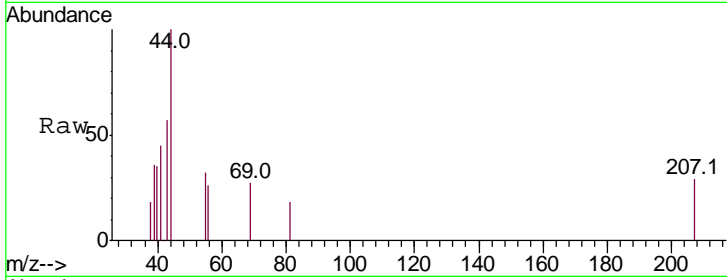




#47  
 Methyl methacrylate  
 Concen: 0.013 ug/l  
 RT: 6.62 min Scan# 1721  
 Delta R.T. 0.00 min  
 Lab File: VU029379.D  
 Acq: 08 Feb 2019 15:01

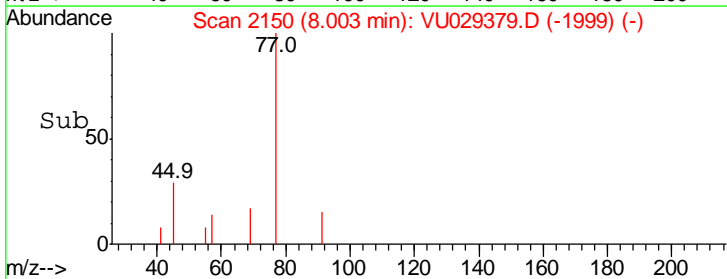
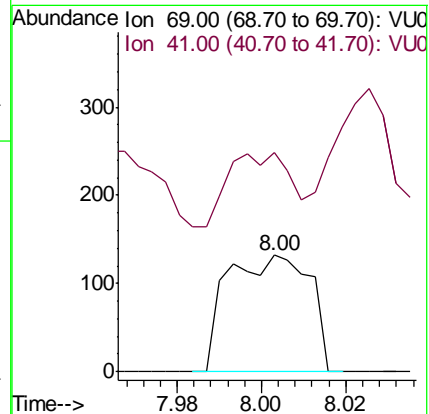
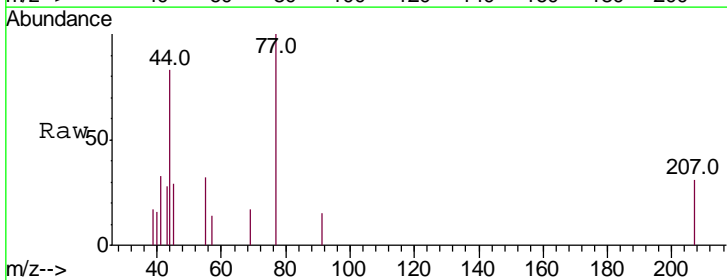
Instrument :  
 MSVOA\_U  
 ClientSampled :

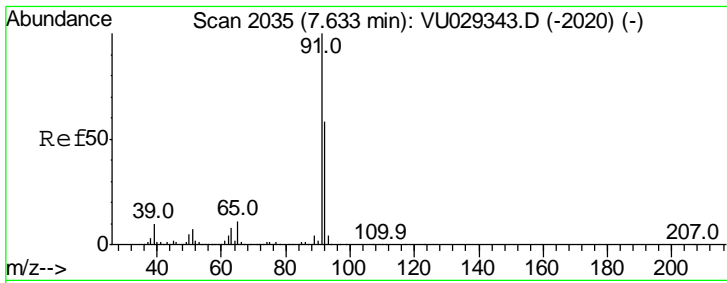
Tgt Ion	Resp	Lower	Upper
69	100		
41	0.0	0.0	296.2
39	0.0	71.2	106.8#
100	0.0	28.6	42.8#



#48  
 Ethyl methacrylate  
 Concen: 0.011 ug/l  
 RT: 8.00 min Scan# 2150  
 Delta R.T. -0.02 min  
 Lab File: VU029379.D  
 Acq: 08 Feb 2019 15:01

Tgt Ion	Resp	Lower	Upper
69	100		
41	56.4	39.9	119.7

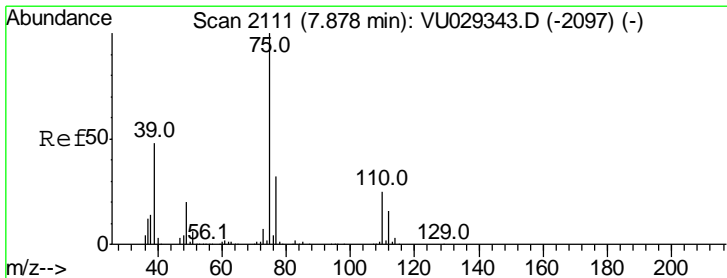
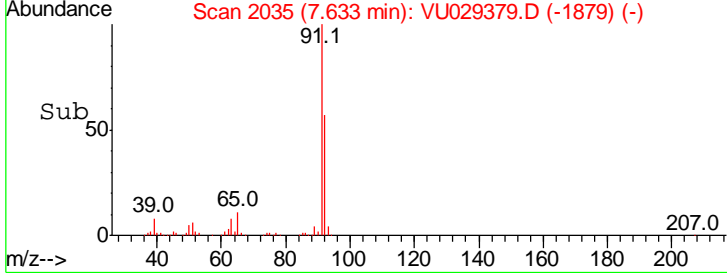
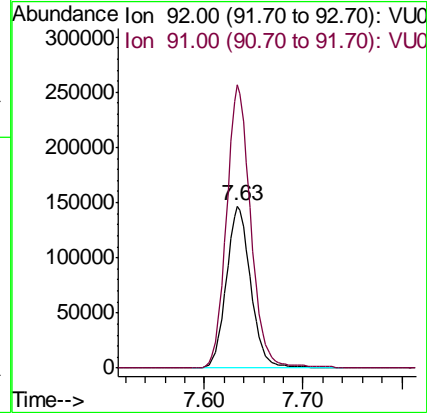
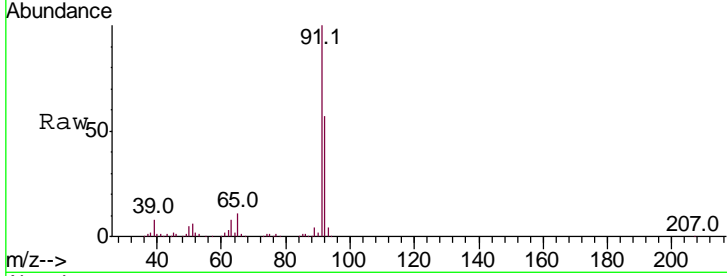




#49  
 Toluene  
 Concen: 6.347 ug/l  
 RT: 7.63 min Scan# 2035  
 Delta R.T. 0.00 min  
 Lab File: VU029379.D  
 Acq: 08 Feb 2019 15:01

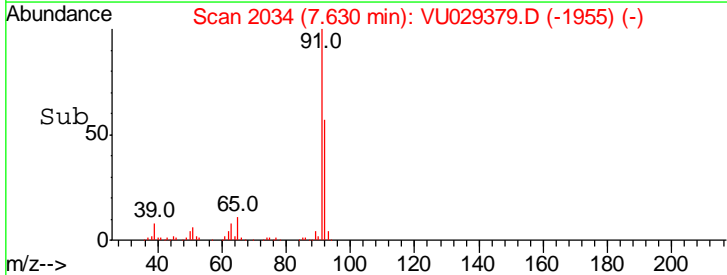
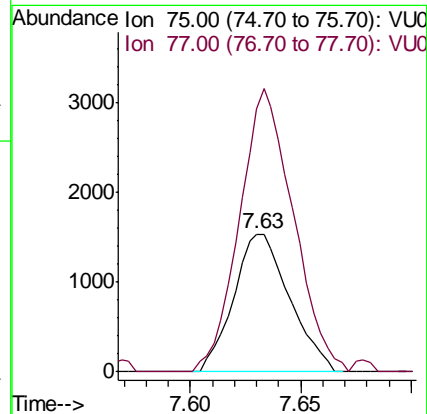
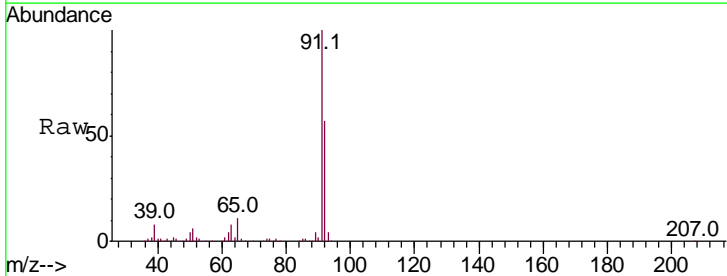
Instrument :  
 MSVOA\_U  
 ClientSampled :

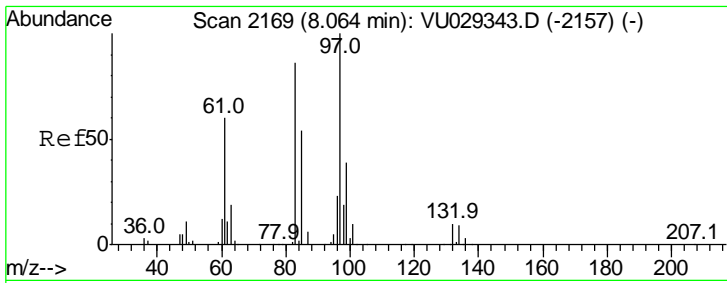
Tgt Ion: 92 Resp: 256350  
 Ion Ratio Lower Upper  
 92 100  
 91 172.9 140.7 211.1



#50  
 t-1,3-Dichloropropene  
 Concen: 0.123 ug/l  
 RT: 7.63 min Scan# 2034  
 Delta R.T. -0.25 min  
 Lab File: VU029379.D  
 Acq: 08 Feb 2019 15:01

Tgt Ion: 75 Resp: 2694  
 Ion Ratio Lower Upper  
 75 100  
 77 190.9 23.6 35.4#

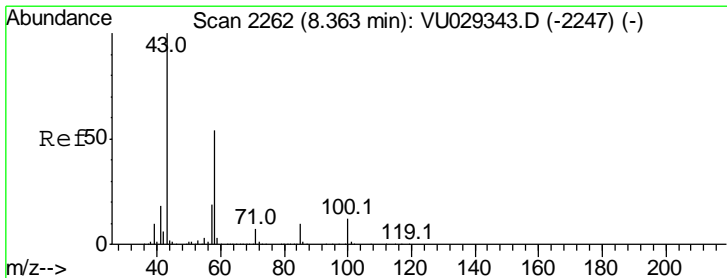
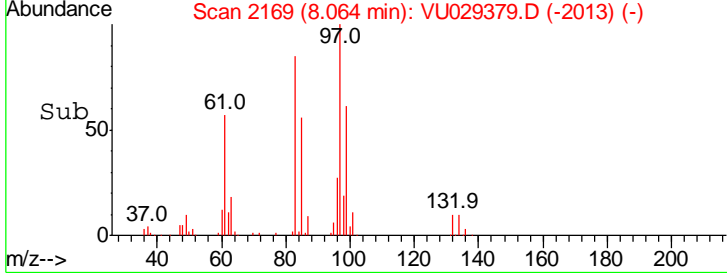
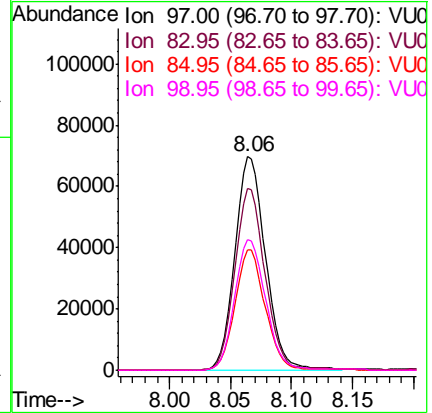
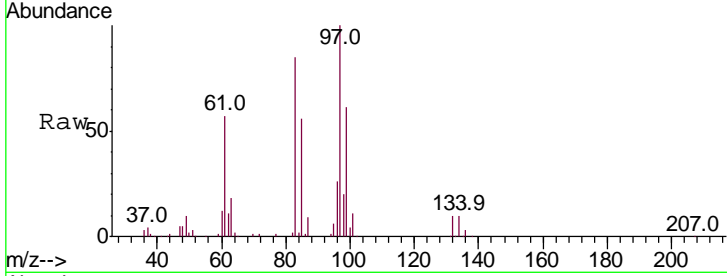




#52  
 1,1,2-Trichloroethane  
 Concen: 10.558 ug/l  
 RT: 8.06 min Scan# 2169  
 Delta R.T. 0.00 min  
 Lab File: VU029379.D  
 Acq: 08 Feb 2019 15:01

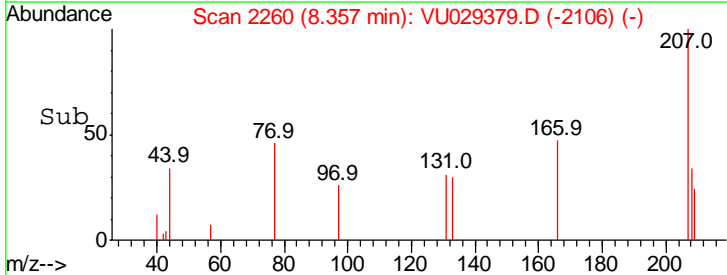
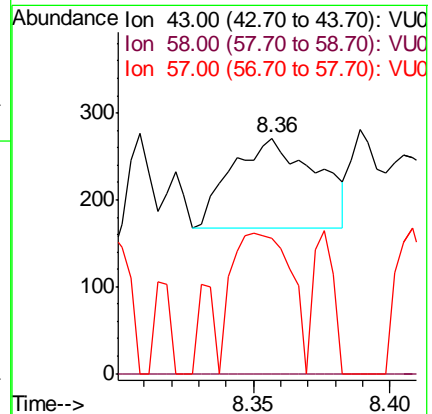
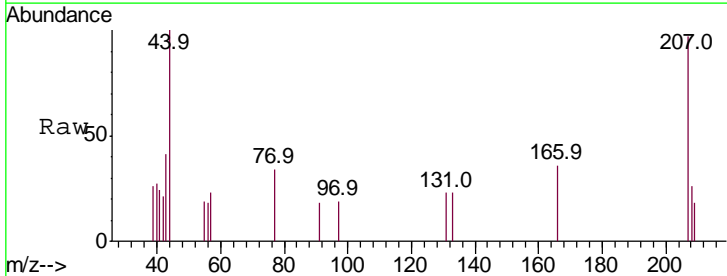
Instrument :  
 MSVOA\_U  
 ClientSampled :

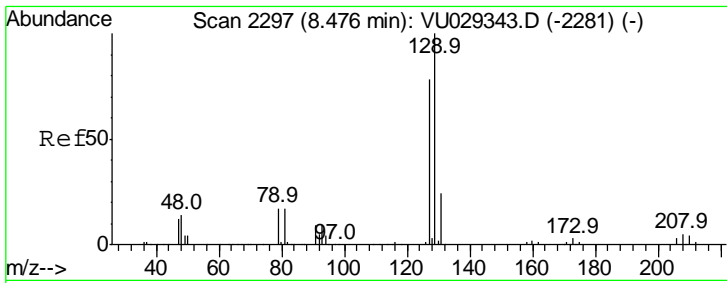
Tgt Ion	Resp	Lower	Upper
97	100		
83	85.0	69.9	104.9
85	56.3	45.8	68.6
99	61.1	50.2	75.2



#54  
 2-Hexanone  
 Concen: 0.031 ug/l  
 RT: 8.36 min Scan# 2260  
 Delta R.T. -0.01 min  
 Lab File: VU029379.D  
 Acq: 08 Feb 2019 15:01

Tgt Ion	Resp	Lower	Upper
43	100		
58	0.0	26.0	66.0#
57	108.0	0.0	37.7#

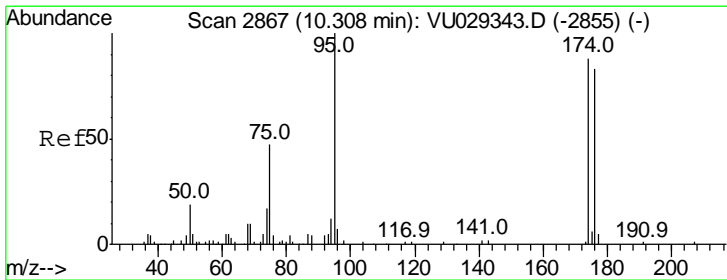
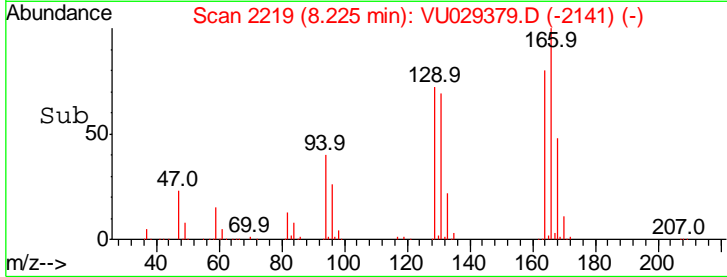
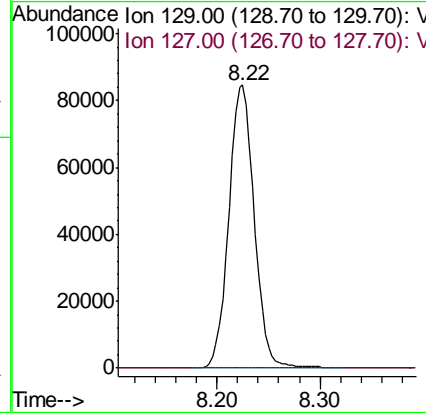
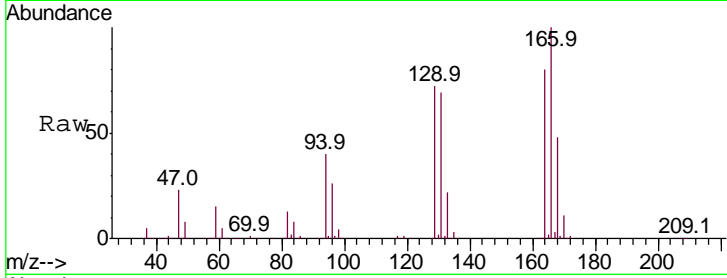




#55  
 Dibromochloromethane  
 Concen: 8.849 ug/l  
 RT: 8.22 min Scan# 2219  
 Delta R.T. -0.25 min  
 Lab File: VU029379.D  
 Acq: 08 Feb 2019 15:01

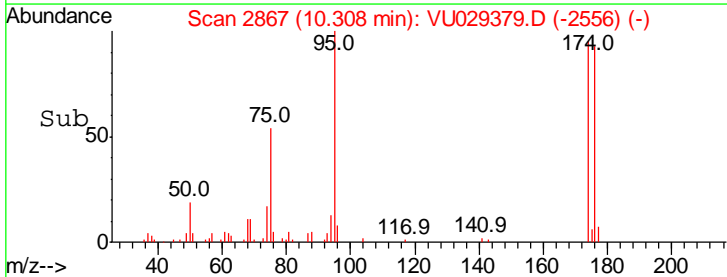
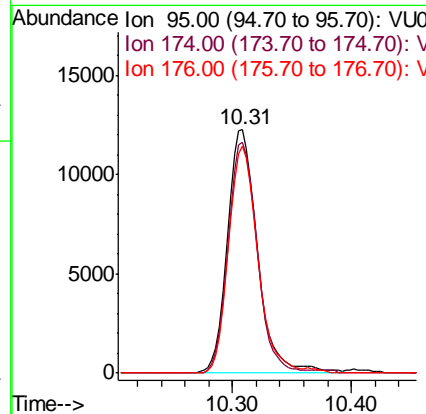
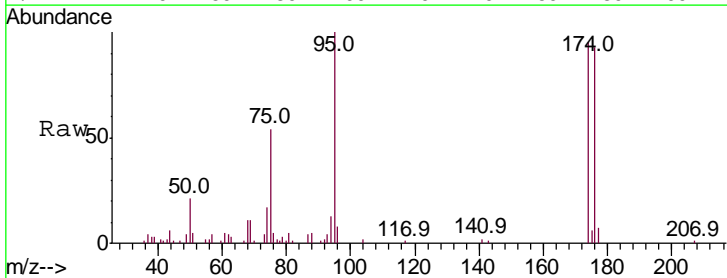
Instrument :  
 MSVOA\_U  
 ClientSampled :

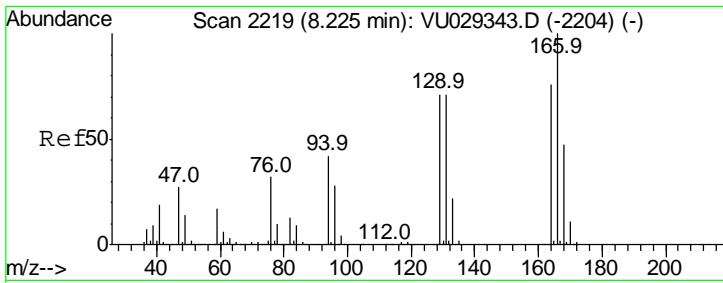
Tgt Ion: 129 Resp: 145691  
 Ion Ratio Lower Upper  
 129 100  
 127 0.0 60.5 90.7#



#57  
 4-Bromofluorobenzene  
 Concen: N.D. ug/l  
 RT: 10.31 min Scan# 2867  
 Delta R.T. 0.00 min  
 Lab File: VU029379.D  
 Acq: 08 Feb 2019 15:01

Tgt Ion: 95 Resp: 21535  
 Ion Ratio Lower Upper  
 95 100  
 174 92.1 64.2 96.2  
 176 90.1 62.3 93.5

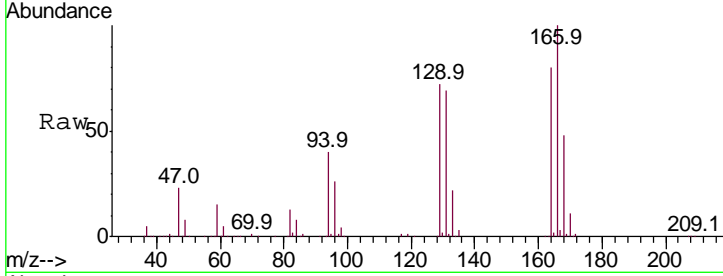




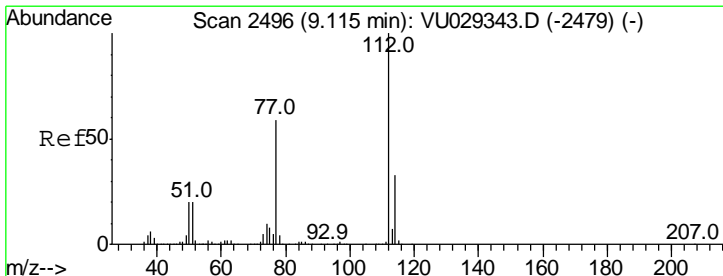
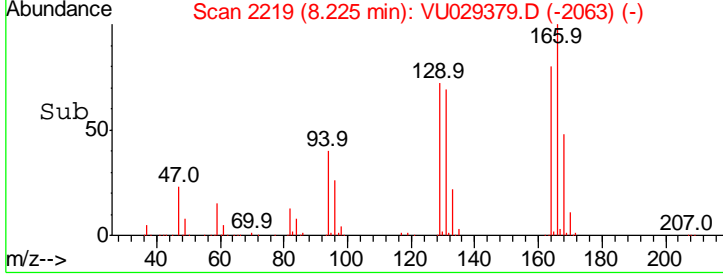
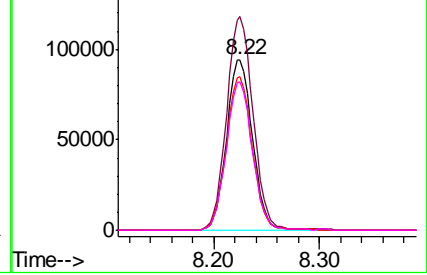
#58  
 Tetrachloroethene  
 Concen: 9.553 ug/l  
 RT: 8.22 min Scan# 2219  
 Delta R.T. 0.00 min  
 Lab File: VU029379.D  
 Acq: 08 Feb 2019 15:01

Instrument :  
 MSVOA\_U  
 ClientSampled :

Tgt Ion	Resp	Lower	Upper
164	100		
166	125.3	106.6	159.8
129	89.8	79.9	119.9
131	86.8	75.8	113.8

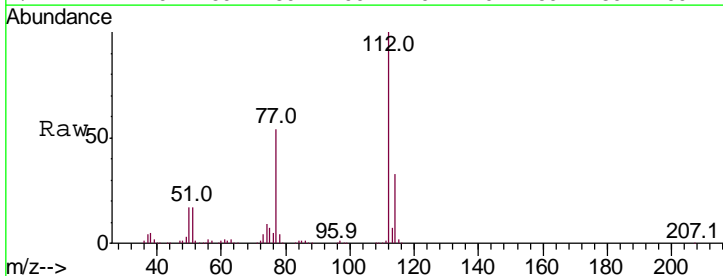


Abundance Ion 163.85 (163.55 to 164.55): V  
 Ion 165.80 (165.50 to 166.50): V  
 Ion 128.90 (128.60 to 129.60): V  
 Ion 130.90 (130.60 to 131.60): V

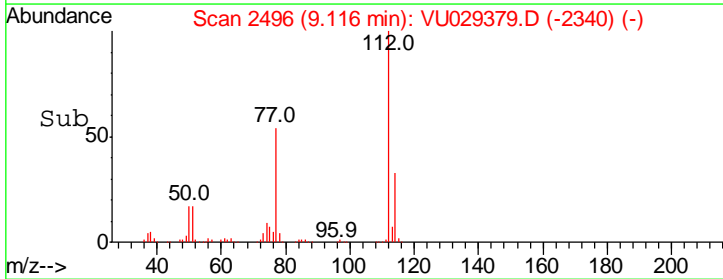
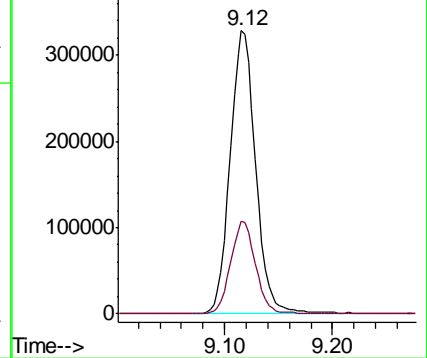


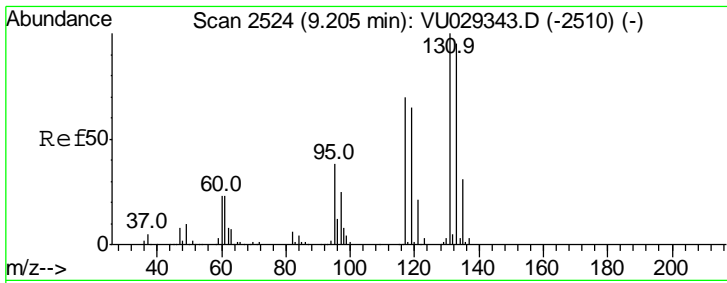
#59  
 Chlorobenzene  
 Concen: 11.916 ug/l  
 RT: 9.12 min Scan# 2496  
 Delta R.T. 0.00 min  
 Lab File: VU029379.D  
 Acq: 08 Feb 2019 15:01

Tgt Ion	Resp	Lower	Upper
112	100		
114	32.6	26.2	39.4



Abundance Ion 112.00 (111.70 to 112.70): V  
 Ion 114.00 (113.70 to 114.70): V

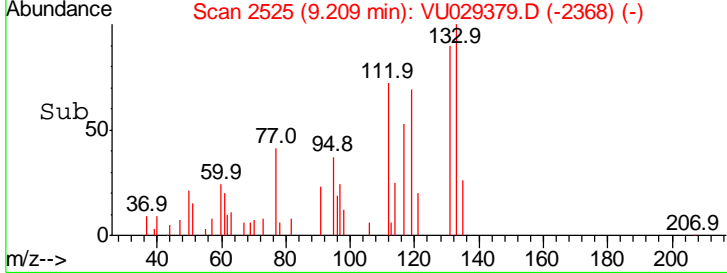
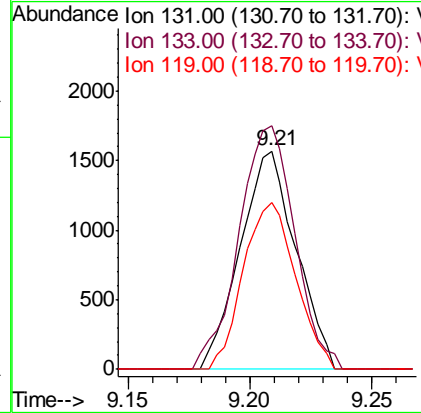
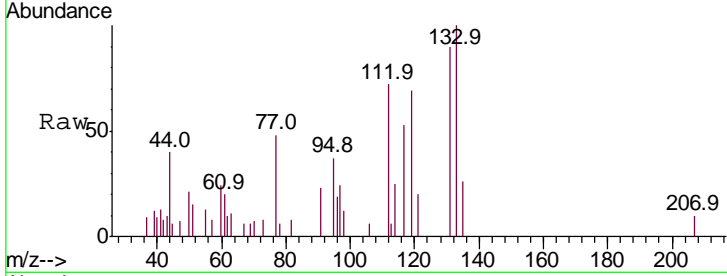




#60  
 1,1,1,2-Tetrachloroethane  
 Concen: 0.148 ug/l  
 RT: 9.21 min Scan# 2525  
 Delta R.T. 0.00 min  
 Lab File: VU029379.D  
 Acq: 08 Feb 2019 15:01

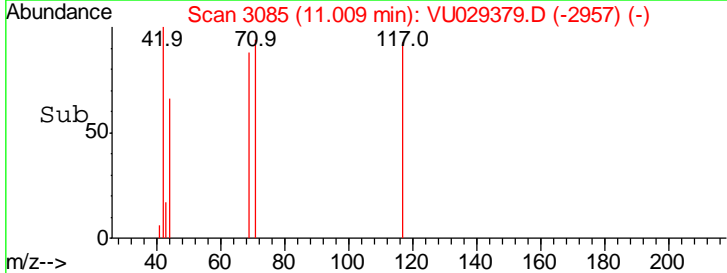
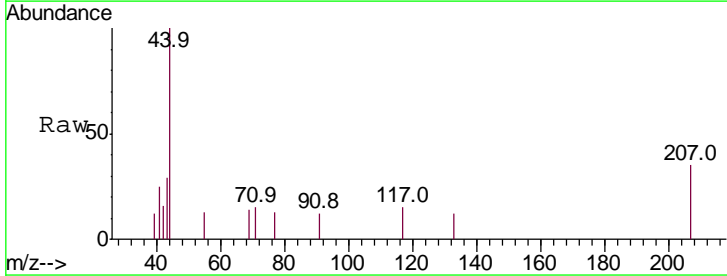
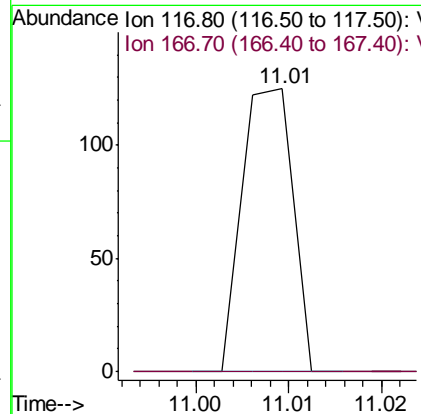
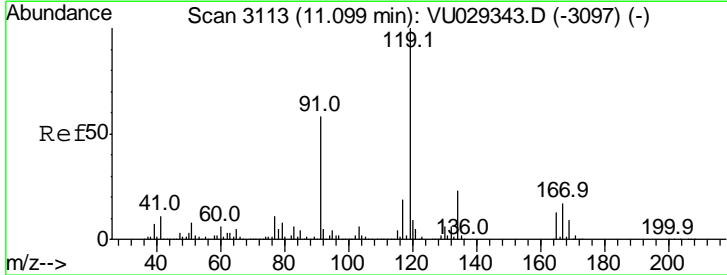
Instrument :  
 MSVOA\_U  
 ClientSampled :

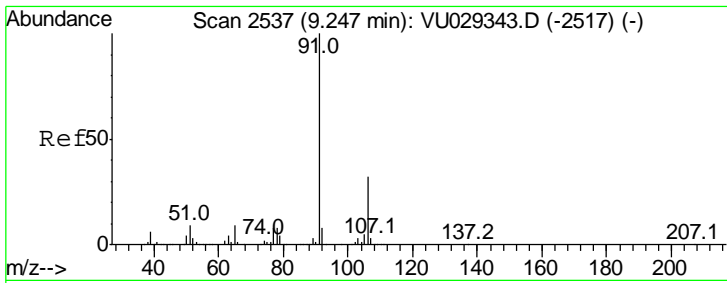
Tgt Ion	Resp	Lower	Upper
131	100		
133	111.9	77.3	115.9
119	71.8	48.9	73.3



#61  
 Pentachloroethane  
 Concen: 0.004 ug/l  
 RT: 11.01 min Scan# 3085  
 Delta R.T. -0.09 min  
 Lab File: VU029379.D  
 Acq: 08 Feb 2019 15:01

Tgt Ion	Resp	Lower	Upper
117	100		
167	0.0	65.9	98.9#



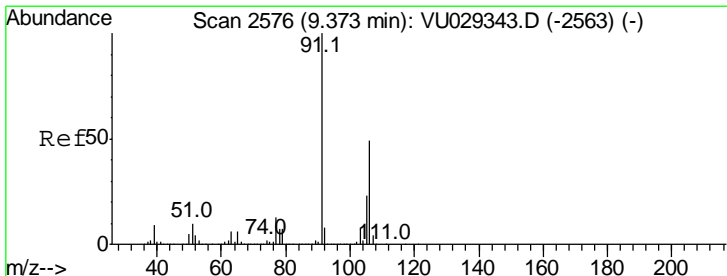
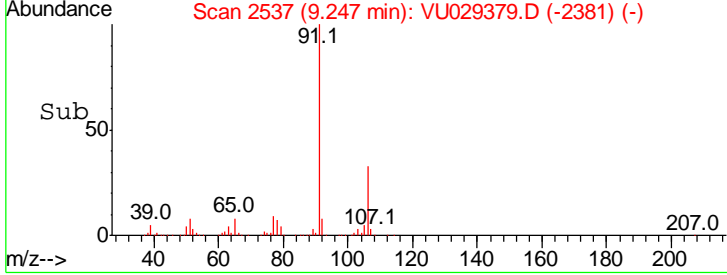
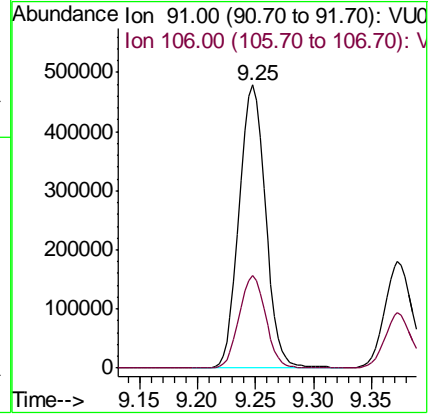
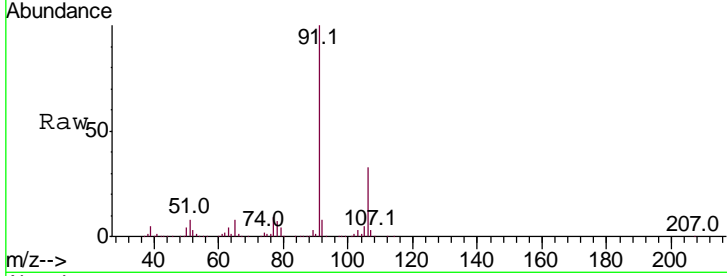


#63  
Ethyl Benzene  
Concen: 9.615 ug/l  
RT: 9.25 min Scan# 2537  
Delta R.T. 0.00 min  
Lab File: VU029379.D  
Acq: 08 Feb 2019 15:01

Instrument :  
MSVOA\_U  
ClientSampled :

Tgt Ion: 91 Resp: 759702

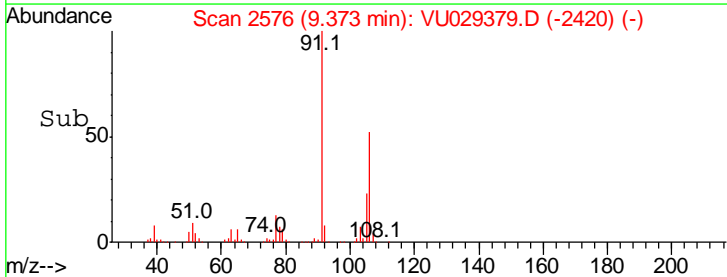
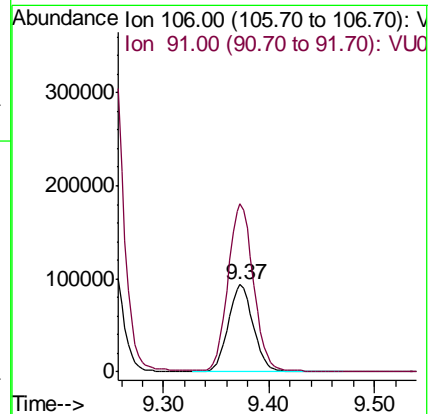
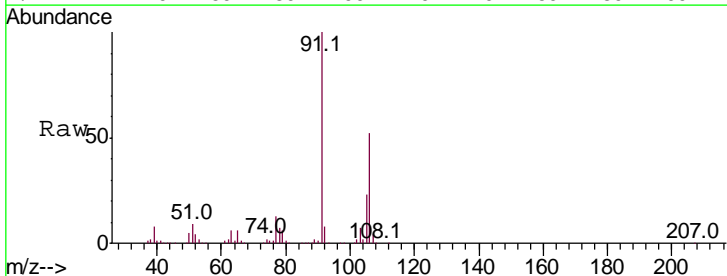
Ion	Ratio	Lower	Upper
91	100		
106	32.6	23.8	35.6

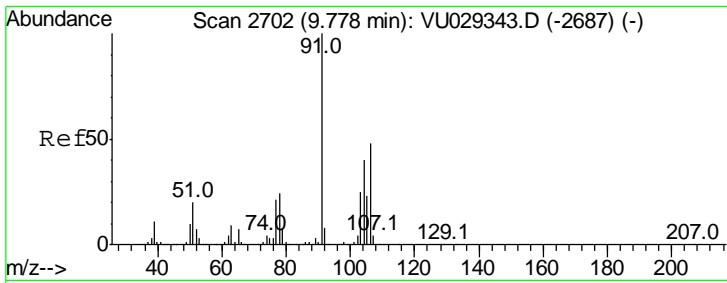


#64  
m/p-Xylenes  
Concen: 4.998 ug/l  
RT: 9.37 min Scan# 2576  
Delta R.T. 0.00 min  
Lab File: VU029379.D  
Acq: 08 Feb 2019 15:01

Tgt Ion: 106 Resp: 153461

Ion	Ratio	Lower	Upper
106	100		
91	196.0	174.6	261.8

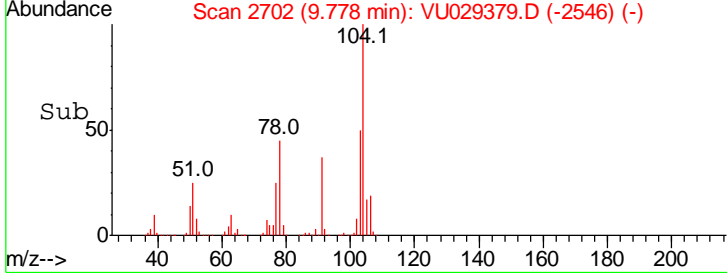
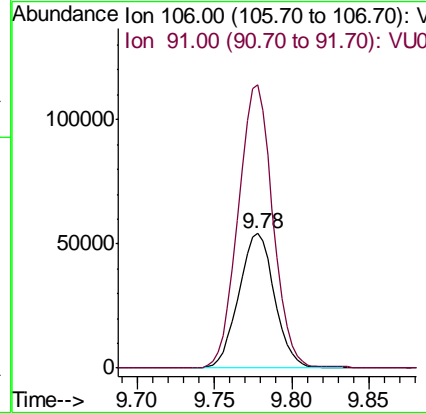
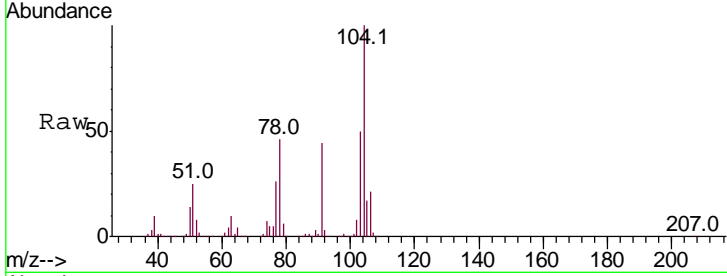




#65  
 o-Xylene  
 Concen: 2.882 ug/l  
 RT: 9.78 min Scan# 2702  
 Delta R.T. 0.00 min  
 Lab File: VU029379.D  
 Acq: 08 Feb 2019 15:01

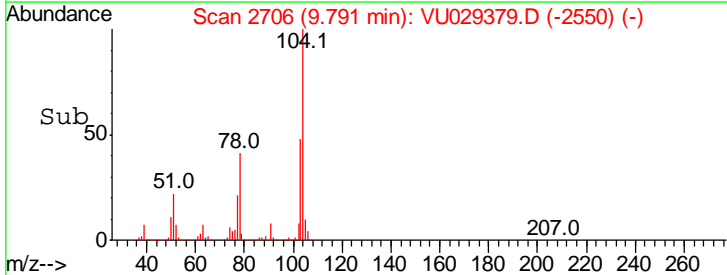
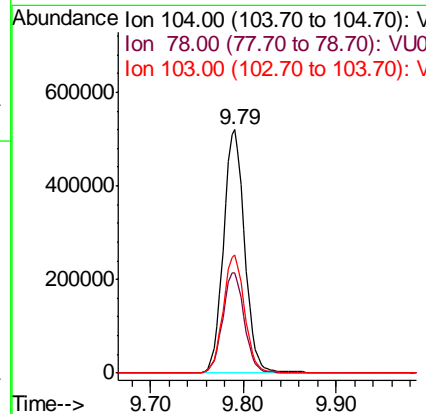
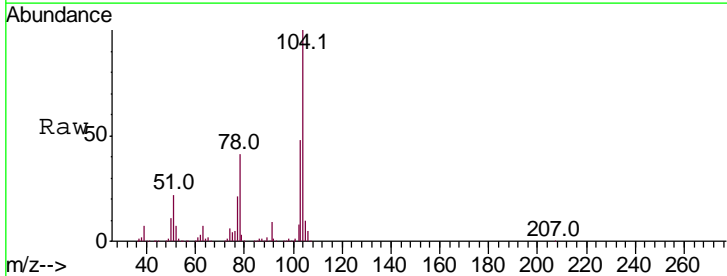
Instrument : MSVOA\_U  
 ClientSampled :

Tgt Ion	Resp	Lower	Upper
106	100		
91	203.8	114.5	343.4

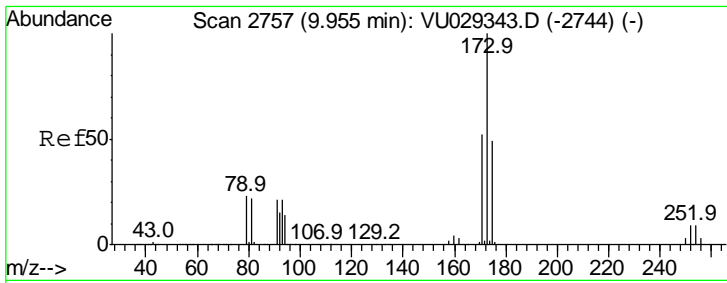


#66  
 Styrene  
 Concen: 16.449 ug/l  
 RT: 9.79 min Scan# 2706  
 Delta R.T. 0.00 min  
 Lab File: VU029379.D  
 Acq: 08 Feb 2019 15:01

Tgt Ion	Resp	Lower	Upper
104	100		
78	42.0	46.5	69.7#
103	49.0	44.7	67.1



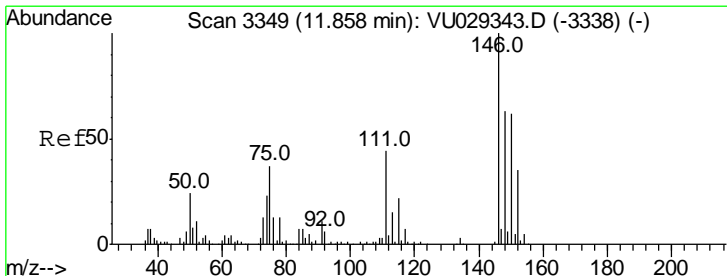
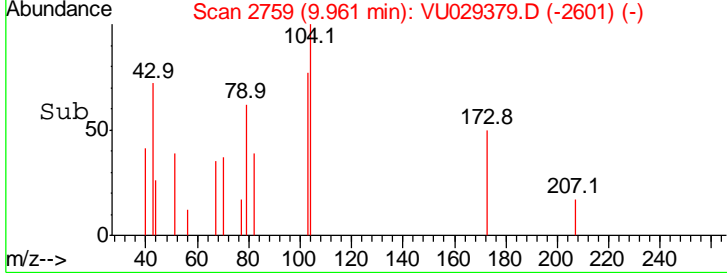
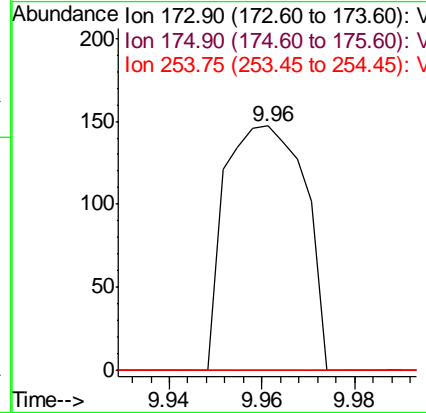
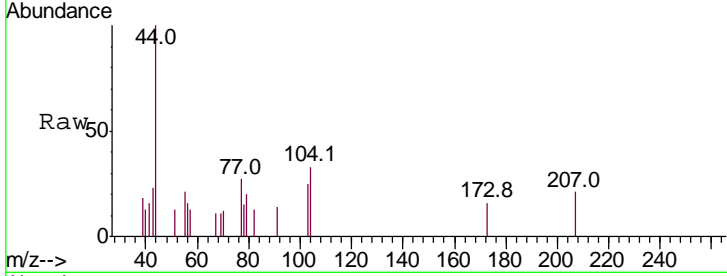




#67  
 Bromoform  
 Concen: 0.017 ug/l  
 RT: 9.96 min Scan# 2759  
 Delta R.T. 0.01 min  
 Lab File: VU029379.D  
 Acq: 08 Feb 2019 15:01

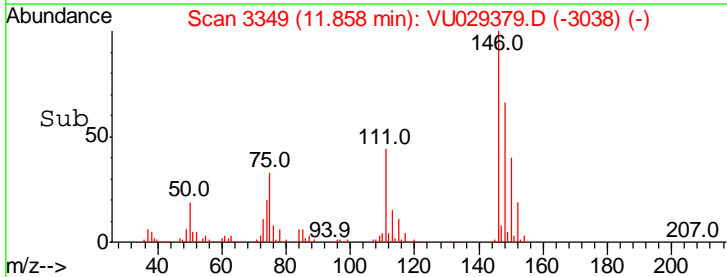
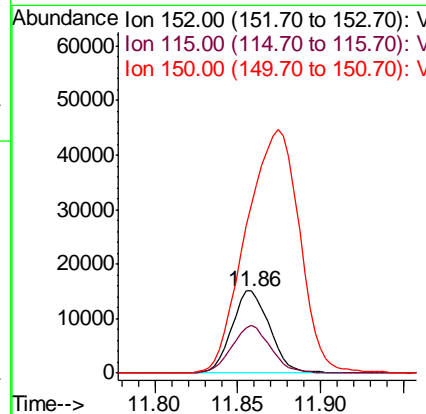
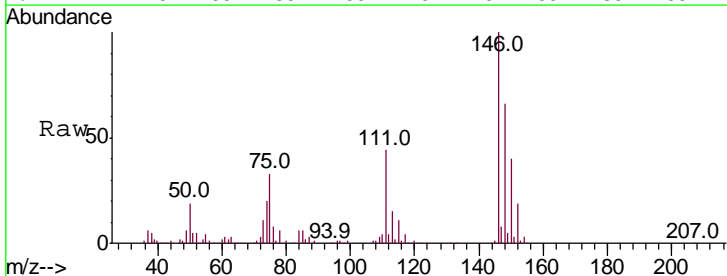
Instrument :  
 MSVOA\_U  
 ClientSampled :

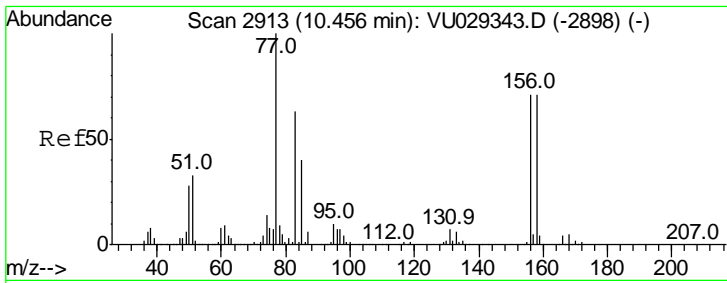
Tgt Ion	Ratio	Lower	Upper
173	100		
175	0.0	38.9	58.3#
254	0.0	7.4	11.2#



#68  
 1,2-Dichlorobenzene-d4  
 Concen: 0.017 ug/l  
 RT: 11.86 min Scan# 3349  
 Delta R.T. 0.00 min  
 Lab File: VU029379.D  
 Acq: 08 Feb 2019 15:01

Tgt Ion	Ratio	Lower	Upper
152	100		
115	59.3	0.0	133.4
150	419.8	0.0	670.8

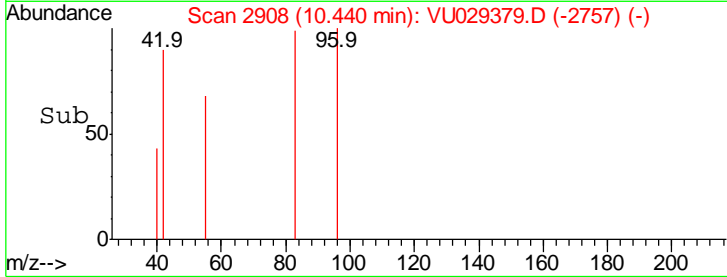
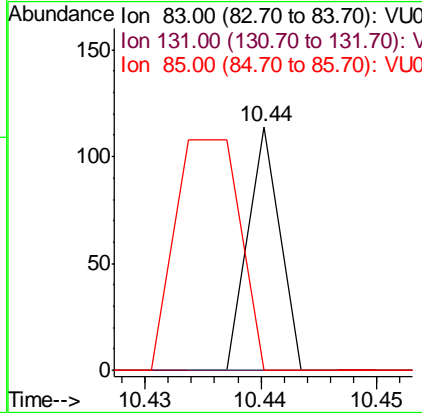
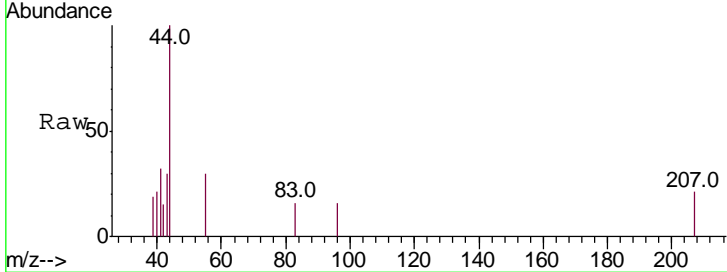




#70  
 1,1,2,2-Tetrachloroethane  
 Concen: 0.001 ug/l  
 RT: 10.44 min Scan# 2908  
 Delta R.T. -0.02 min  
 Lab File: VU029379.D  
 Acq: 08 Feb 2019 15:01

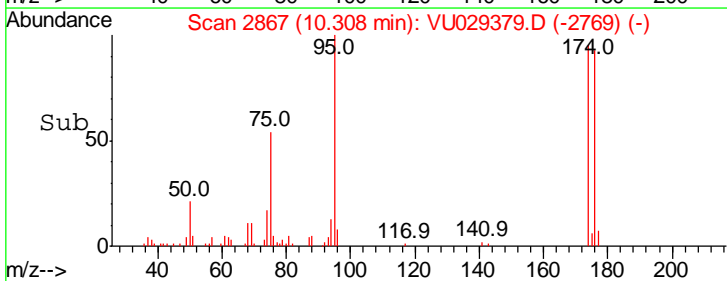
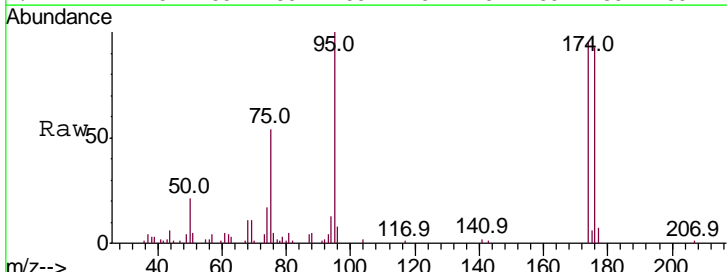
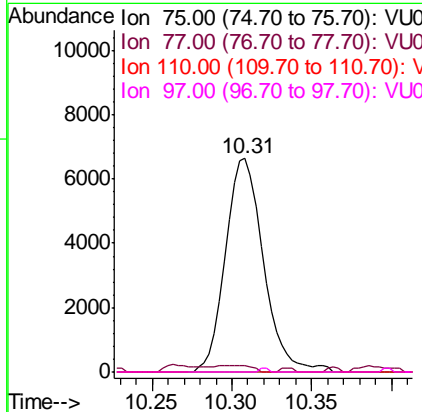
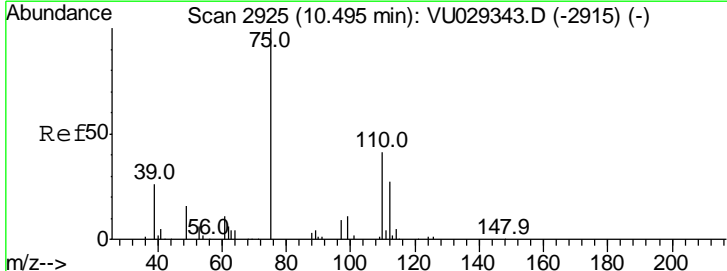
Instrument : MSVOA\_U  
 ClientSampled :

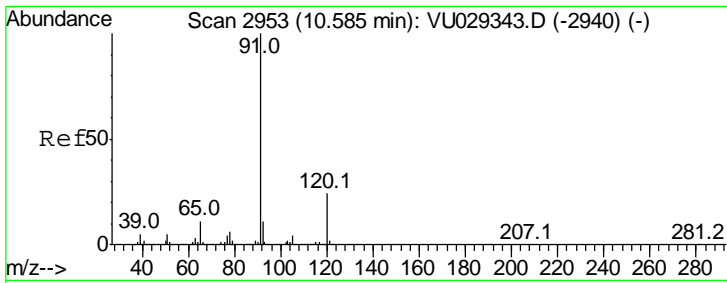
Tgt Ion	Resp	Lower	Upper
83	100		
131	0.0	8.1	12.1#
85	190.9	50.3	75.5#



#71  
 1,2,3-Trichloropropane  
 Concen: 1.057 ug/l  
 RT: 10.31 min Scan# 2867  
 Delta R.T. -0.19 min  
 Lab File: VU029379.D  
 Acq: 08 Feb 2019 15:01

Tgt Ion	Resp	Lower	Upper
75	100		
77	0.4	0.0	0.0#
110	0.0	0.0	63.6
97	0.4	0.0	31.4

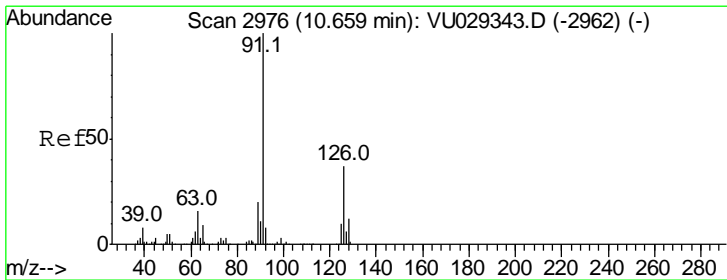
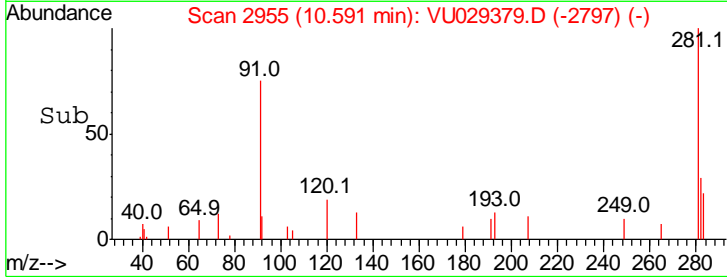
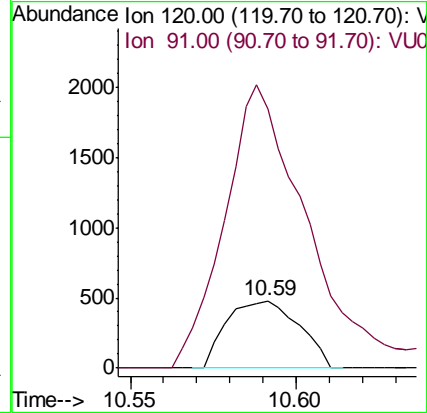
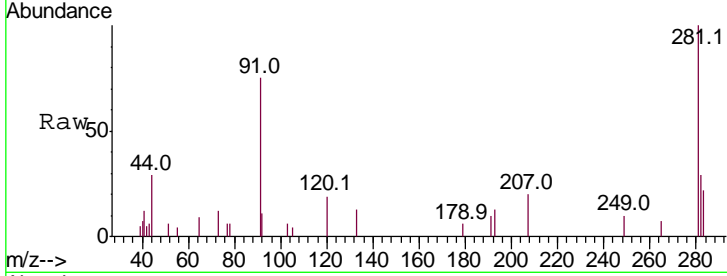




#73  
 n-propylbenzene  
 Concen: 0.032 ug/l  
 RT: 10.59 min Scan# 2955  
 Delta R.T. 0.01 min  
 Lab File: VU029379.D  
 Acq: 08 Feb 2019 15:01

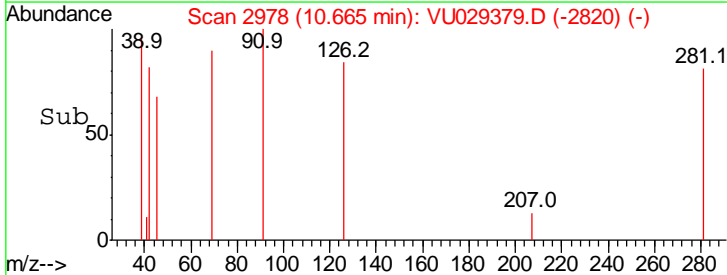
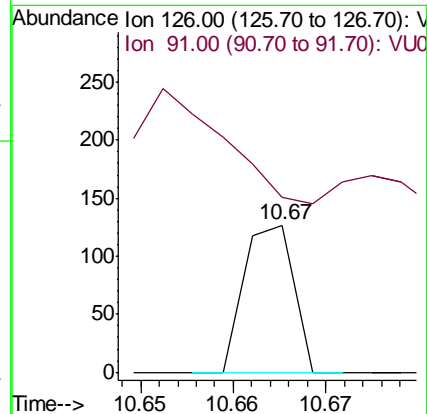
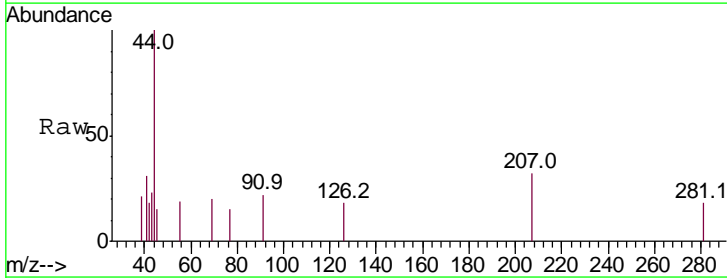
Instrument :  
 MSVOA\_U  
 ClientSampled :

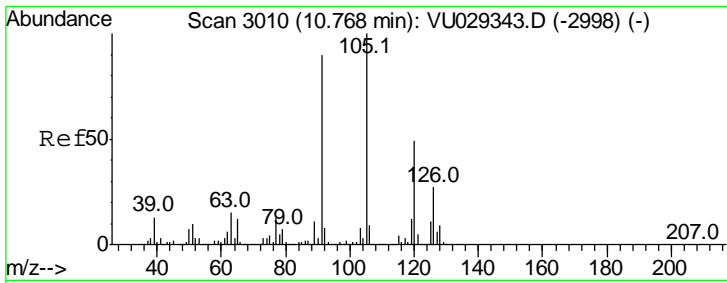
Tgt Ion:120 Resp: 727  
 Ion Ratio Lower Upper  
 120 100  
 91 476.8 370.0 555.0



#74  
 2-Chlorotoluene  
 Concen: 0.002 ug/l  
 RT: 10.67 min Scan# 2978  
 Delta R.T. 0.01 min  
 Lab File: VU029379.D  
 Acq: 08 Feb 2019 15:01

Tgt Ion:126 Resp: 47  
 Ion Ratio Lower Upper  
 126 100  
 91 340.4 0.0 643.0

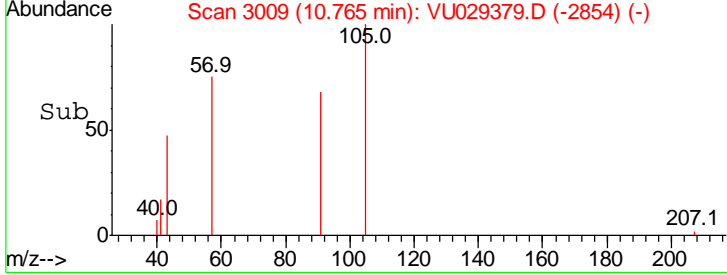
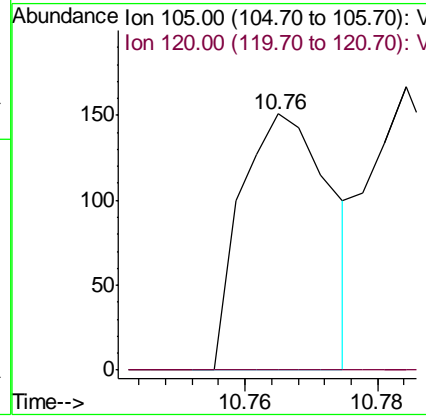
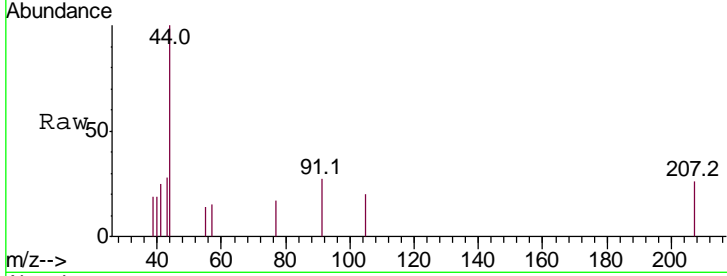




#75  
 1,3,5-Trimethylbenzene  
 Concen: 0.002 ug/l  
 RT: 10.76 min Scan# 3009  
 Delta R.T. -0.00 min  
 Lab File: VU029379.D  
 Acq: 08 Feb 2019 15:01

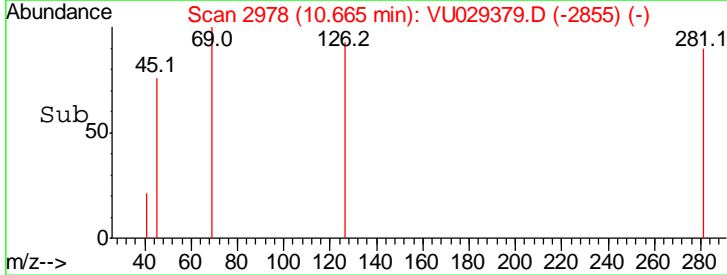
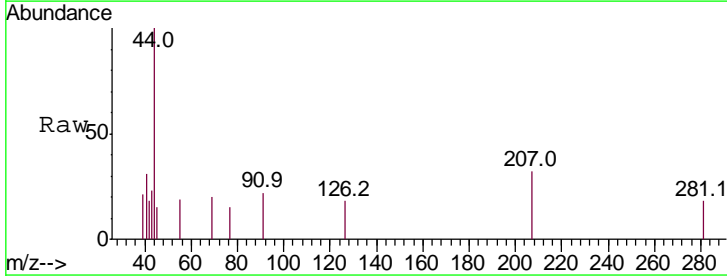
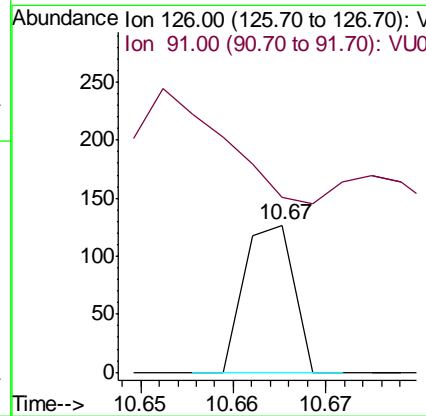
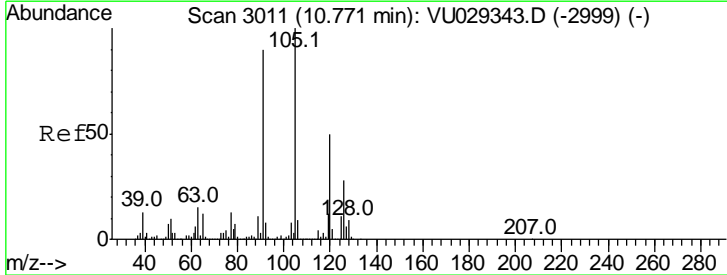
Instrument :  
 MSVOA\_U  
 ClientSampled :

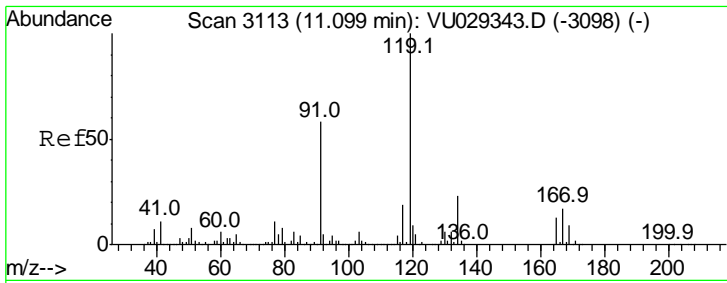
Tgt Ion	Resp	Lower	Upper
105	100		
120	0.0	37.3	55.9#



#76  
 4-Chlorotoluene  
 Concen: 0.002 ug/l  
 RT: 10.67 min Scan# 2978  
 Delta R.T. -0.11 min  
 Lab File: VU029379.D  
 Acq: 08 Feb 2019 15:01

Tgt Ion	Resp	Lower	Upper
126	100		
91	340.4	0.0	727.4

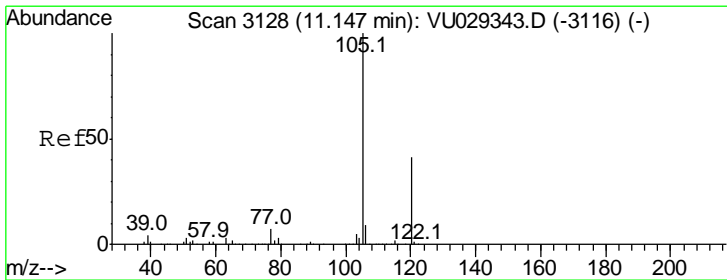
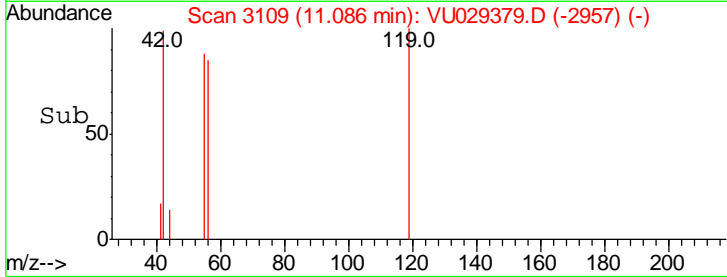
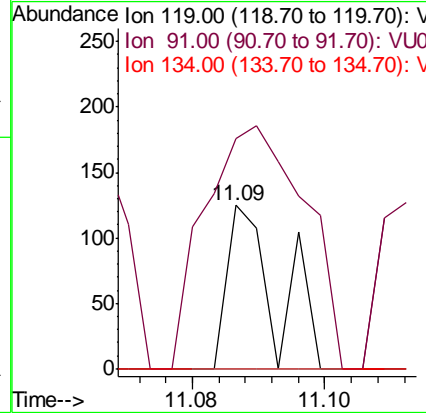
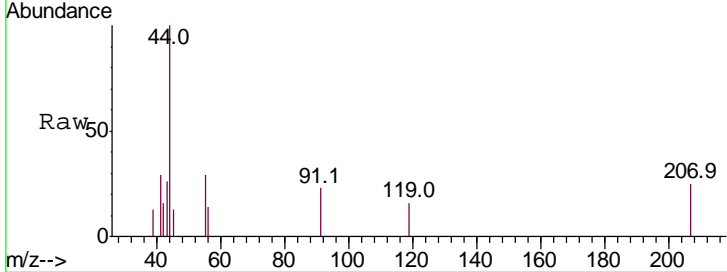




#77  
 tert-Butylbenzene  
 Concen: 0.001 ug/l  
 RT: 11.09 min Scan# 3109  
 Delta R.T. -0.01 min  
 Lab File: VU029379.D  
 Acq: 08 Feb 2019 15:01

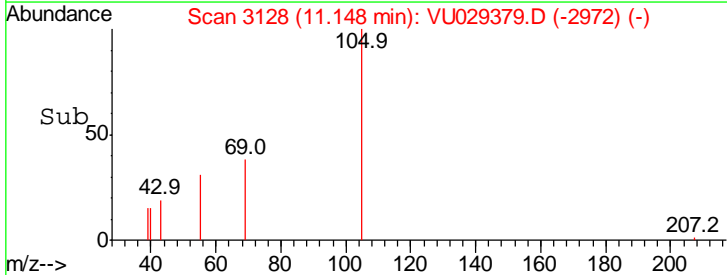
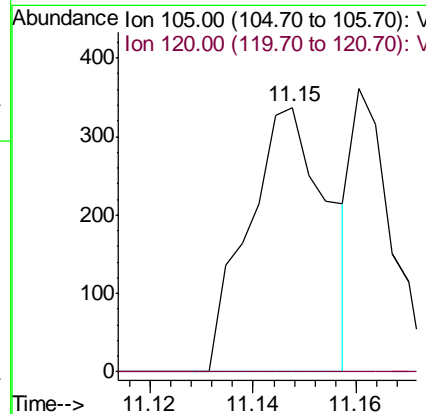
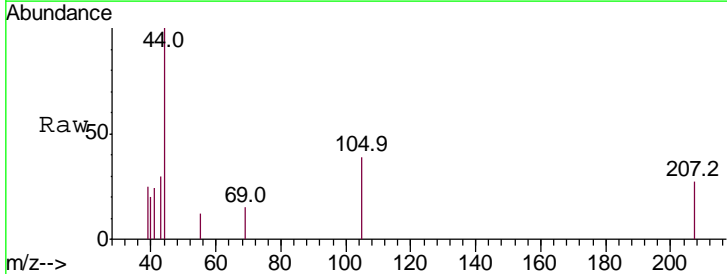
Instrument : MSVOA\_U  
 ClientSampled :

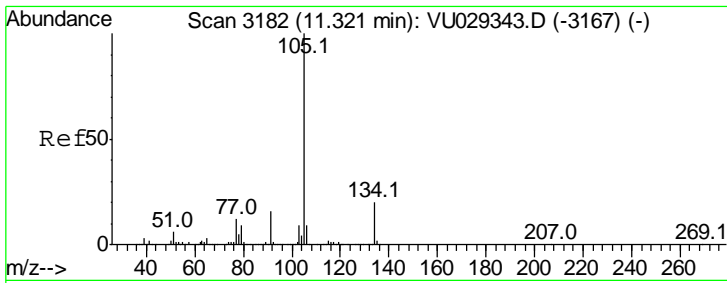
Tgt Ion	Resp	Lower	Upper
119	100		
91	300.0	32.2	96.6#
134	0.0	17.6	26.4#



#78  
 1,2,4-Trimethylbenzene  
 Concen: 0.005 ug/l  
 RT: 11.15 min Scan# 3128  
 Delta R.T. 0.00 min  
 Lab File: VU029379.D  
 Acq: 08 Feb 2019 15:01

Tgt Ion	Resp	Lower	Upper
105	100		
120	0.0	21.4	64.3#

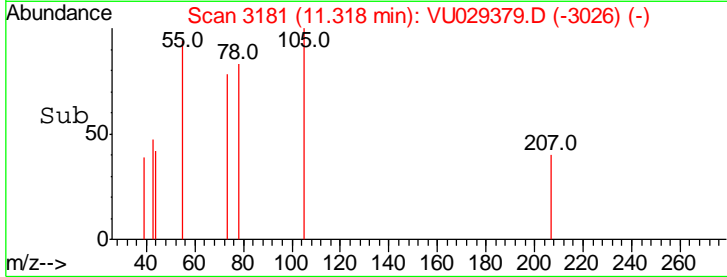
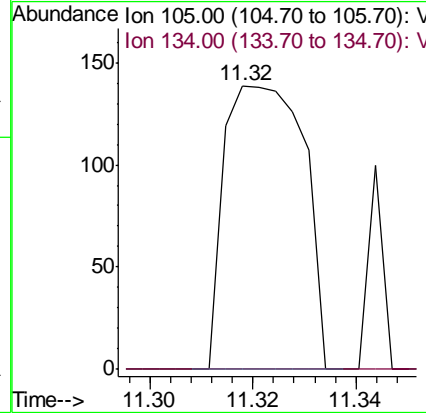
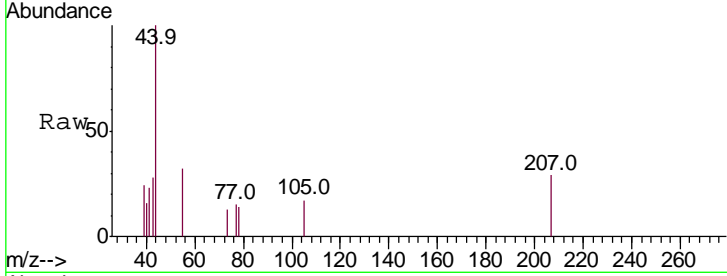




#79  
 sec-Butylbenzene  
 Concen: 0.002 ug/l  
 RT: 11.32 min Scan# 3181  
 Delta R.T. -0.00 min  
 Lab File: VU029379.D  
 Acq: 08 Feb 2019 15:01

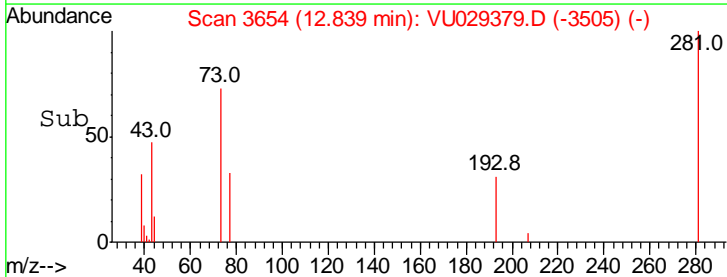
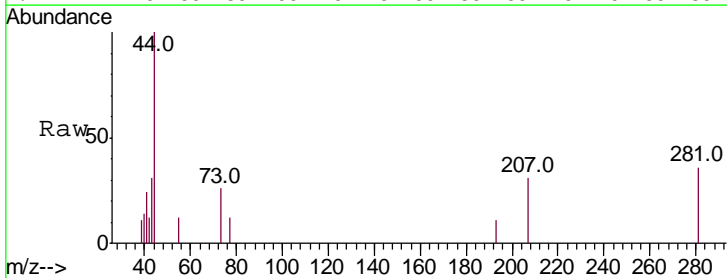
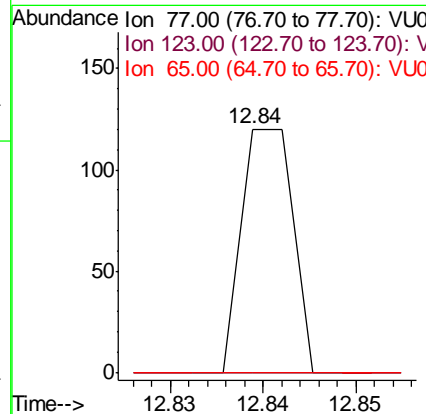
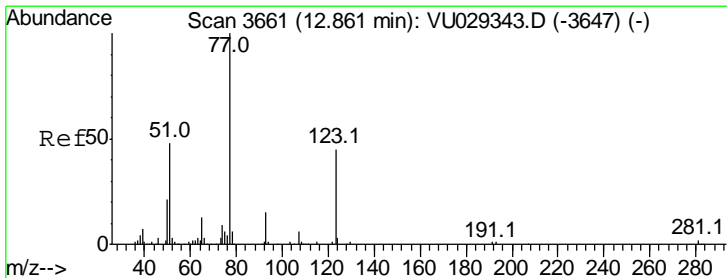
Instrument :  
 MSVOA\_U  
 ClientSampled :

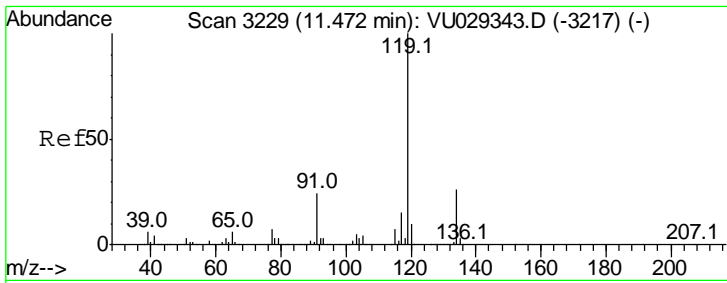
Tgt Ion: 105 Resp: 148  
 Ion Ratio Lower Upper  
 105 100  
 134 0.0 15.0 22.6#



#80  
 Nitrobenzene  
 Concen: 0.070 ug/l  
 RT: 12.84 min Scan# 3654  
 Delta R.T. -0.02 min  
 Lab File: VU029379.D  
 Acq: 08 Feb 2019 15:01

Tgt Ion: 77 Resp: 46  
 Ion Ratio Lower Upper  
 77 100  
 123 0.0 17.5 61.9#  
 65 0.0 10.8 13.8#

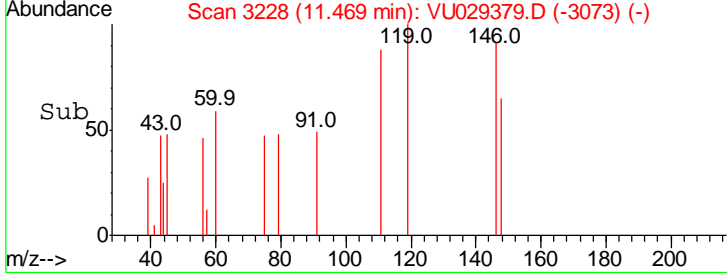
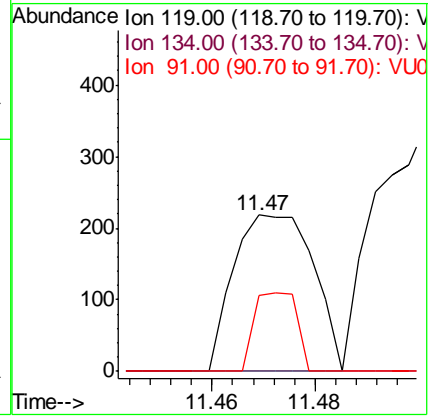
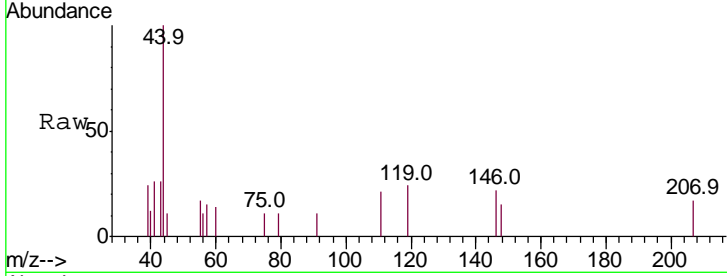




#81  
 p-Isopropyltoluene  
 Concen: 0.003 ug/l  
 RT: 11.47 min Scan# 3228  
 Delta R.T. -0.00 min  
 Lab File: VU029379.D  
 Acq: 08 Feb 2019 15:01

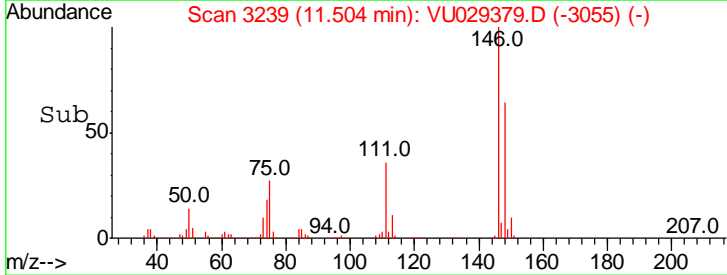
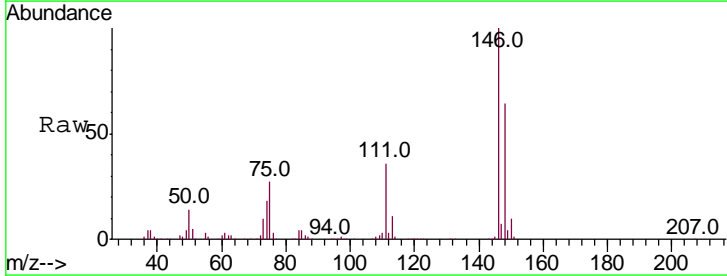
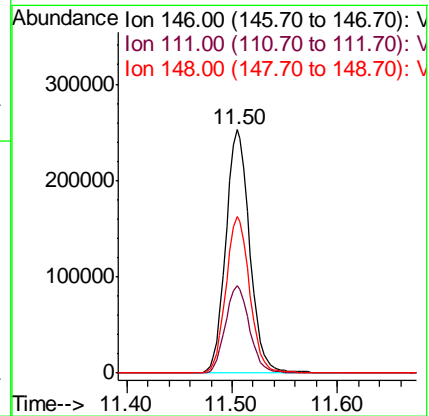
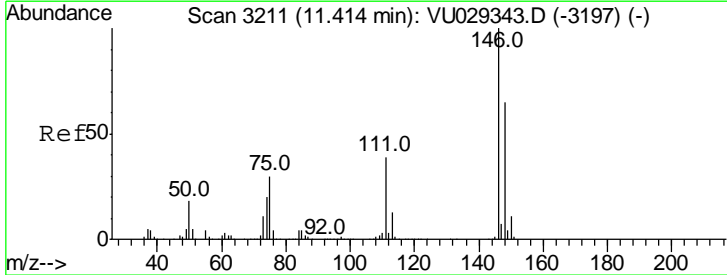
Instrument : MSVOA\_U  
 ClientSampled :

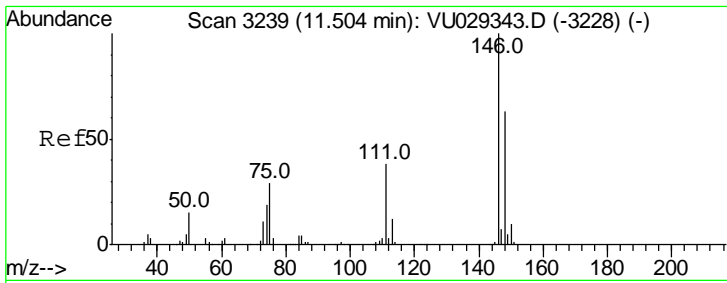
Tgt Ion	Resp	Lower	Upper
119	100		
134	0.0	19.8	29.6#
91	26.5	21.5	32.3



#82  
 1,3-Dichlorobenzene  
 Concen: 10.327 ug/l  
 RT: 11.50 min Scan# 3239  
 Delta R.T. 0.09 min  
 Lab File: VU029379.D  
 Acq: 08 Feb 2019 15:01

Tgt Ion	Resp	Lower	Upper
146	100		
111	36.4	34.1	51.1
148	64.1	52.3	78.5

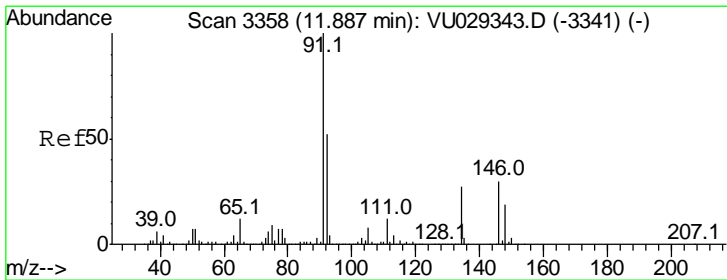
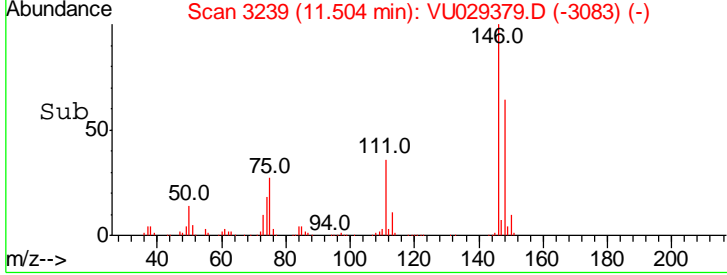
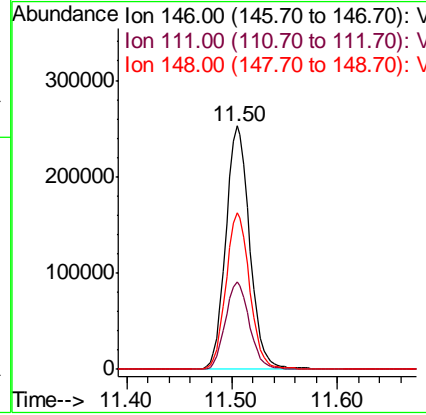
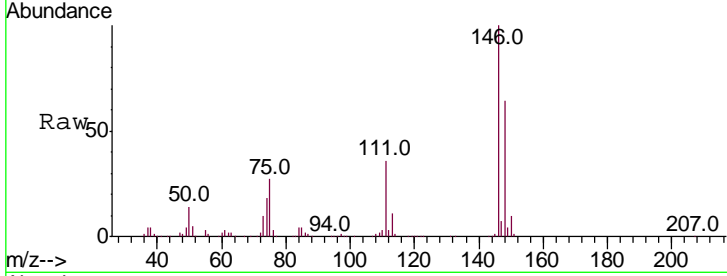




#83  
 1,4-Dichlorobenzene  
 Concen: 10.369 ug/l  
 RT: 11.50 min Scan# 3239  
 Delta R.T. 0.00 min  
 Lab File: VU029379.D  
 Acq: 08 Feb 2019 15:01

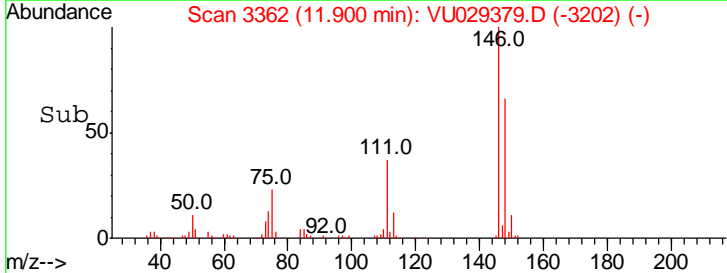
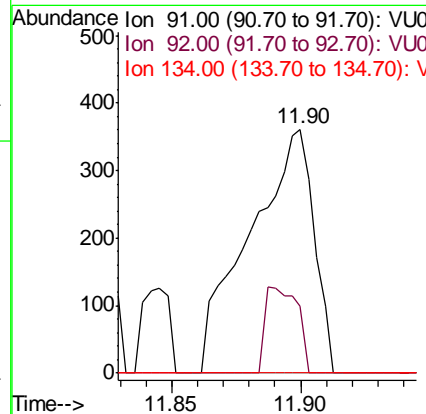
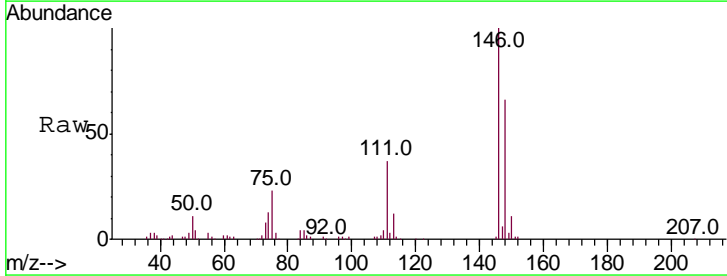
Instrument : MSVOA\_U  
 ClientSampled :

Tgt Ion	Resp	Lower	Upper
146	100		
111	36.4	32.9	49.3
148	64.1	51.8	77.6

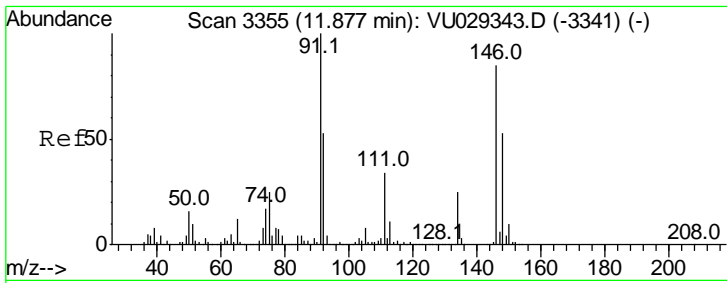


#84  
 n-Butylbenzene  
 Concen: 0.009 ug/l  
 RT: 11.90 min Scan# 3362  
 Delta R.T. 0.01 min  
 Lab File: VU029379.D  
 Acq: 08 Feb 2019 15:01

Tgt Ion	Resp	Lower	Upper
91	100		
92	17.9	41.0	61.6#
134	0.0	19.1	28.7#



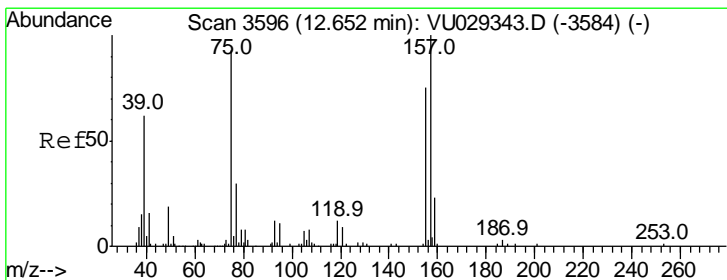
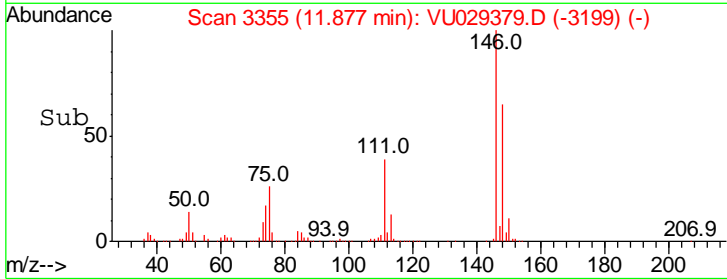
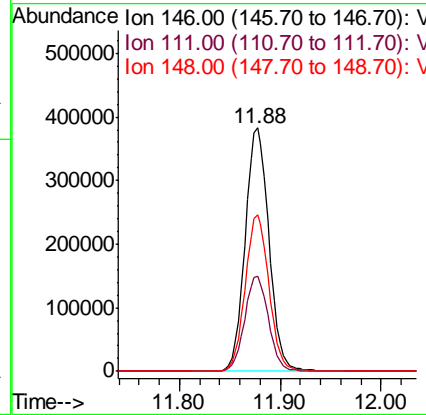
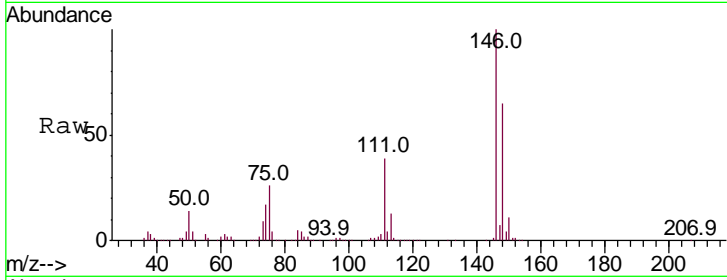




#85  
 1,2-Dichlorobenzene  
 Concen: 17.177 ug/l  
 RT: 11.88 min Scan# 3355  
 Delta R.T. 0.00 min  
 Lab File: VU029379.D  
 Acq: 08 Feb 2019 15:01

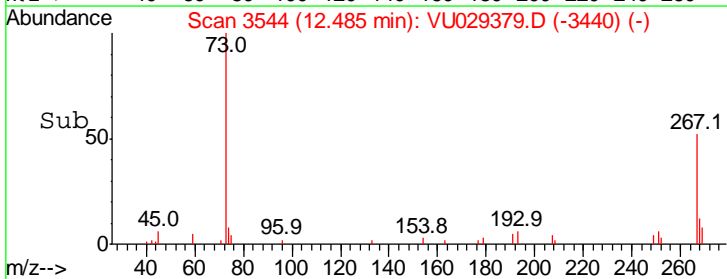
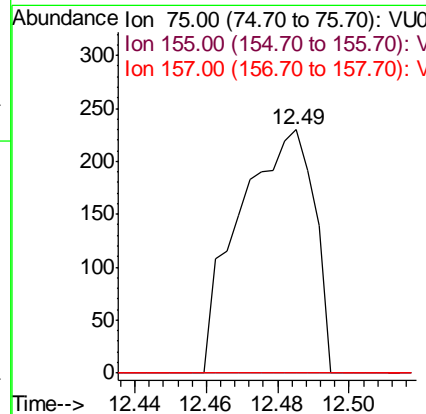
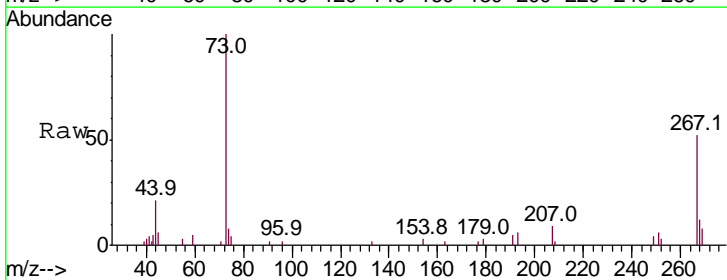
Instrument :  
 MSVOA\_U  
 ClientSampled :

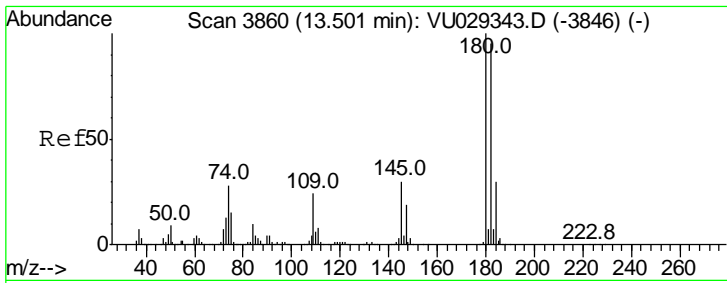
Tgt Ion	Resp	Lower	Upper
146	100		
111	39.4	21.9	65.8
148	64.5	31.8	95.3



#86  
 1,2-Dibromo-3-Chloropropane  
 Concen: 0.119 ug/l  
 RT: 12.49 min Scan# 3544  
 Delta R.T. -0.17 min  
 Lab File: VU029379.D  
 Acq: 08 Feb 2019 15:01

Tgt Ion	Resp	Lower	Upper
75	100		
155	0.0	53.8	80.8#
157	0.0	69.2	103.8#

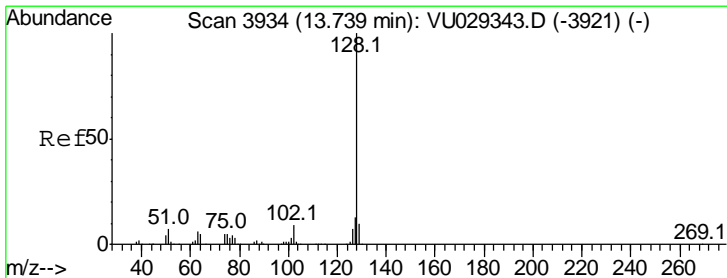
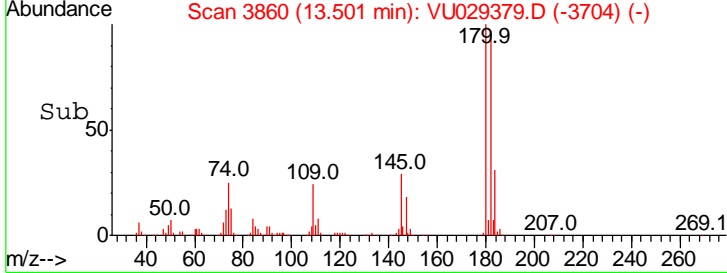
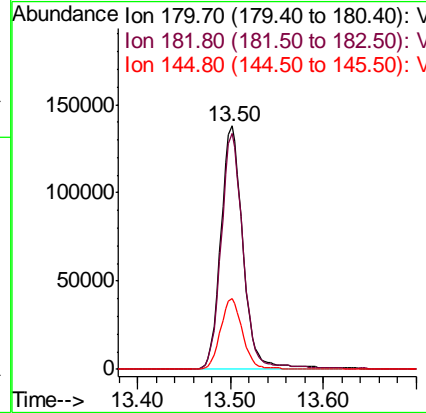
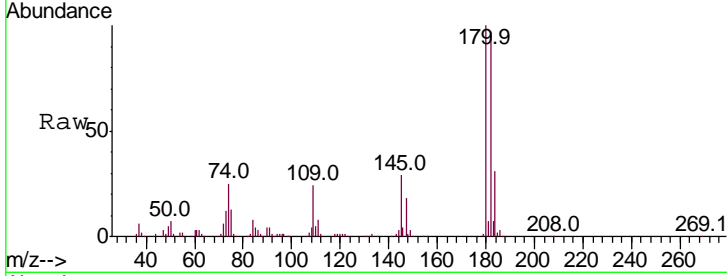




#87  
 1,2,4-Trichlorobenzene  
 Concen: 9.043 ug/l  
 RT: 13.50 min Scan# 3860  
 Delta R.T. 0.00 min  
 Lab File: VU029379.D  
 Acq: 08 Feb 2019 15:01

Instrument : MSVOA\_U  
 ClientSampled :

Tgt Ion	Resp	Lower	Upper
180	100		
182	93.7	76.6	114.8
145	28.9	24.6	36.8



#89  
 Naphthalene  
 Concen: 0.007 ug/l  
 RT: 13.75 min Scan# 3937  
 Delta R.T. 0.01 min  
 Lab File: VU029379.D  
 Acq: 08 Feb 2019 15:01

Tgt Ion	Resp	Lower	Upper
128	100		
127	0.0	10.7	16.1#
129	0.0	8.2	12.4#

