

Data Path : Z:\voasrv\HPCHEM1\MSVOA_U\Data\VU020823\
 Data File : VU053002.D
 Acq On : 08 Feb 2023 15:28
 Operator : JC/MD
 Sample : VU0208WBL01
 Misc : 5.0mL/MSVOA_U/WATER
 ALS Vial : 11 Sample Multiplier: 1

Instrument :
 MSVOA_U
 ClientSampleId :
 VBLK045

Quant Time: Feb 09 01:48:35 2023
 Quant Method : Z:\voasrv\HPCHEM1\MSVOA_U\Method\SFAMULM020823WMA.M
 Quant Title : VOC Analysis
 QLast Update : Thu Feb 09 01:09:47 2023
 Response via : Initial Calibration

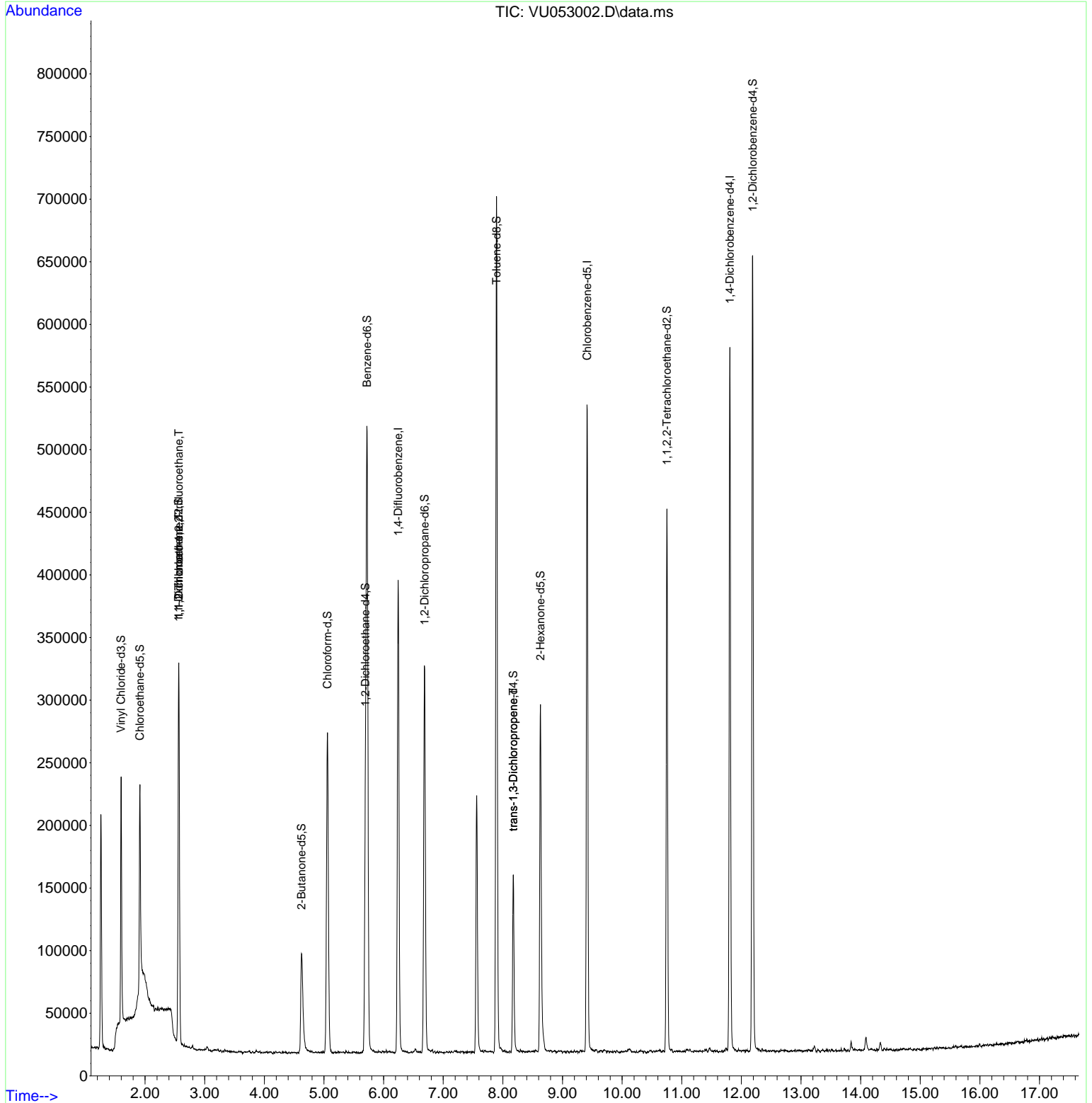
Compound	R.T.	QIon	Response	Conc	Units	Dev(Min)
Internal Standards						
1) 1,4-Difluorobenzene	6.244	114	325800	50.000	ug/L	0.00
28) Chlorobenzene-d5	9.411	117	306553	50.000	ug/L	0.00
58) 1,4-Dichlorobenzene-d4	11.807	152	155693	50.000	ug/L	0.00
System Monitoring Compounds						
4) Vinyl Chloride-d3	1.598	65	143435	47.387	ug/L	0.00
Spiked Amount	50.000	Range 60 - 135	Recovery =	94.780%		
7) Chloroethane-d5	1.913	69	122538	50.046	ug/L	0.00
Spiked Amount	50.000	Range 70 - 130	Recovery =	100.100%		
11) 1,1-Dichloroethene-d2	2.563	63	170414	36.740	ug/L	0.00
Spiked Amount	50.000	Range 60 - 125	Recovery =	73.480%		
21) 2-Butanone-d5	4.624	46	120118	102.317	ug/L	0.00
Spiked Amount	100.000	Range 40 - 130	Recovery =	102.320%		
24) Chloroform-d	5.058	84	235629	47.081	ug/L	0.00
Spiked Amount	50.000	Range 70 - 125	Recovery =	94.160%		
26) 1,2-Dichloroethane-d4	5.694	65	145305	48.576	ug/L	0.00
Spiked Amount	50.000	Range 70 - 125	Recovery =	97.160%		
32) Benzene-d6	5.723	84	495976	48.765	ug/L	0.00
Spiked Amount	50.000	Range 70 - 125	Recovery =	97.520%		
36) 1,2-Dichloropropane-d6	6.688	67	154554	49.252	ug/L	0.00
Spiked Amount	50.000	Range 70 - 120	Recovery =	98.500%		
41) Toluene-d8	7.894	98	478533	48.018	ug/L	0.00
Spiked Amount	50.000	Range 80 - 120	Recovery =	96.040%		
43) trans-1,3-Dichloroprop...	8.173	79	83279	48.423	ug/L	0.00
Spiked Amount	50.000	Range 60 - 125	Recovery =	96.840%		
47) 2-Hexanone-d5	8.630	63	101602	106.620	ug/L	0.00
Spiked Amount	100.000	Range 45 - 130	Recovery =	106.620%		
56) 1,1,2,2-Tetrachloroeth...	10.752	84	215043	49.501	ug/L	0.00
Spiked Amount	50.000	Range 65 - 120	Recovery =	99.000%		
66) 1,2-Dichlorobenzene-d4	12.189	152	177010	51.085	ug/L	0.00
Spiked Amount	50.000	Range 80 - 120	Recovery =	102.180%		
Target Compounds						
10) 1,1,2-Trichloro-1,2,2-...	2.566	101	2038	0.909	ug/L #	20
12) 1,1-Dichloroethene	2.566	96	1429	0.669	ug/L #	1
44) trans-1,3-Dichloropropene	8.173	75	3862	0.973	ug/L #	80

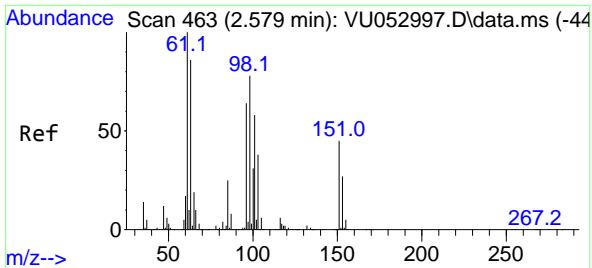
(#) = qualifier out of range (m) = manual integration (+) = signals summed

Data Path : Z:\voasrv\HPCHEM1\MSVOA_U\Data\VU020823\
 Data File : VU053002.D
 Acq On : 08 Feb 2023 15:28
 Operator : JC/MD
 Sample : VU0208WBL01
 Misc : 5.0mL/MSVOA_U/WATER
 ALS Vial : 11 Sample Multiplier: 1

Instrument :
 MSVOA_U
 ClientSampleId :
 VBLK045

Quant Time: Feb 09 01:48:35 2023
 Quant Method : Z:\voasrv\HPCHEM1\MSVOA_U\Method\SFAMULM020823WMA.M
 Quant Title : VOC Analysis
 QLast Update : Thu Feb 09 01:09:47 2023
 Response via : Initial Calibration



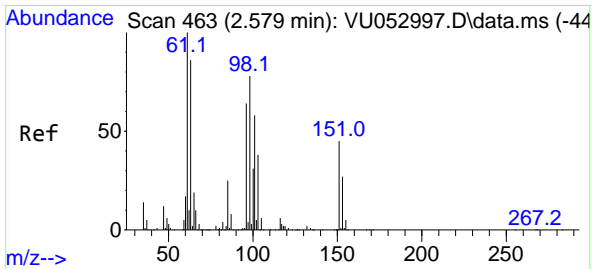
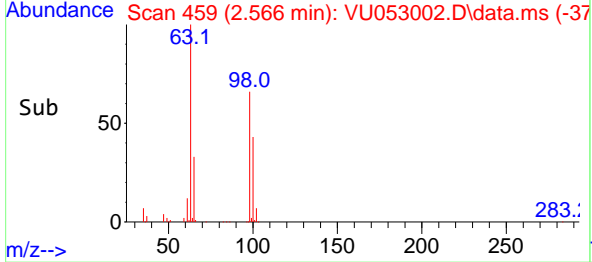
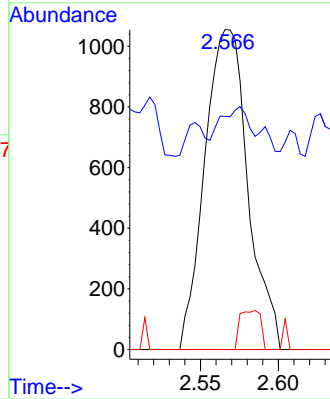
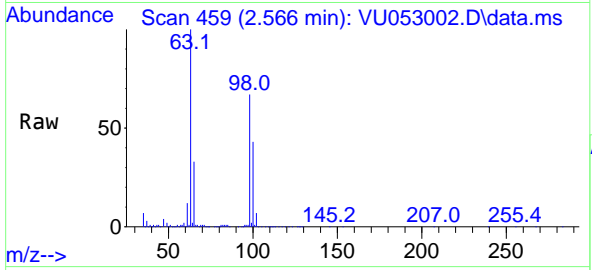


#10
 1,1,2-Trichloro-1,2,2-trifluoroethane
 Concen: 0.909 ug/L
 RT: 2.566 min Scan# 411
 Delta R.T. -0.013 min
 Lab File: VU053002.D
 Acq: 08 Feb 2023 15:28

Instrument : MSVOA_U
 ClientSampleId : VBLK045

Tgt Ion:101 Resp: 2038

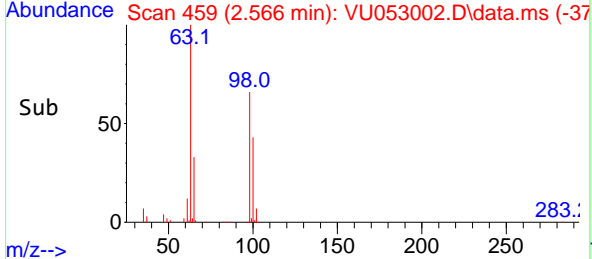
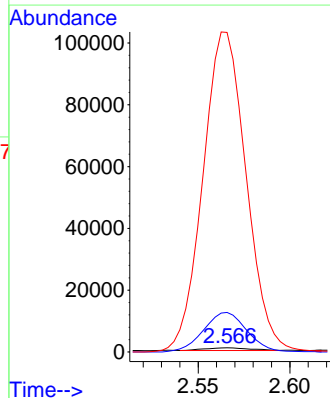
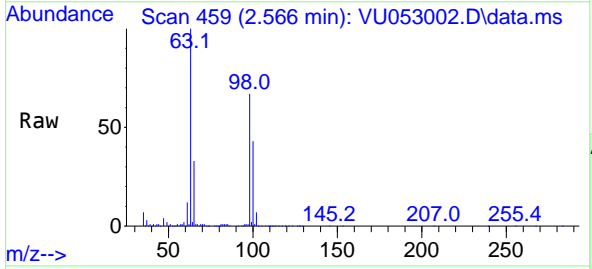
Ion	Ratio	Lower	Upper
101	100		
85	2.6	32.9	49.3#
151	0.0	62.6	94.0#

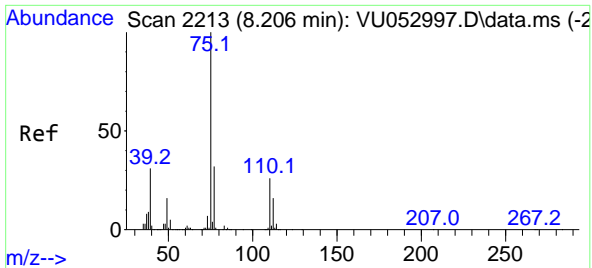


#12
 1,1-Dichloroethene
 Concen: 0.669 ug/L
 RT: 2.566 min Scan# 459
 Delta R.T. -0.013 min
 Lab File: VU053002.D
 Acq: 08 Feb 2023 15:28

Tgt Ion: 96 Resp: 1429

Ion	Ratio	Lower	Upper
96	100		
61	937.9	114.3	212.3#
63	7584.8	80.6	149.6#





#44
 trans-1,3-Dichloropropene
 Concen: 0.973 ug/L
 RT: 8.173 min Scan# 21
 Delta R.T. -0.032 min
 Lab File: VU053002.D
 Acq: 08 Feb 2023 15:28

Instrument : MSVOA_U
 ClientSampleId : VBLK045

Tgt Ion: 75 Resp: 3862
 Ion Ratio Lower Upper
 75 100
 77 42.9 22.3 41.3#

