

Data Path : Z:\voasrv\HPCHEM1\MSVOA\_U\Data\VU020823\  
 Data File : VU053004.D  
 Acq On : 08 Feb 2023 16:44  
 Operator : JC/MD  
 Sample : 01443-01  
 Misc : 5.0mL/MSVOA\_U/WATER  
 ALS Vial : 13 Sample Multiplier: 1

Instrument :  
 MSVOA\_U  
 ClientSampleId :  
 X3E90

Quant Time: Feb 13 16:35:46 2023  
 Quant Method : Z:\voasrv\HPCHEM1\MSVOA\_U\Method\SFAMULM020823WMA.M  
 Quant Title : VOC Analysis  
 QLast Update : Thu Feb 09 01:09:47 2023  
 Response via : Initial Calibration

Compound	R.T.	QIon	Response	Conc	Units	Dev(Min)
Internal Standards						
1) 1,4-Difluorobenzene	6.244	114	317813	50.000	ug/L	0.00
28) Chlorobenzene-d5	9.414	117	297433	50.000	ug/L	0.00
58) 1,4-Dichlorobenzene-d4	11.807	152	160507	50.000	ug/L	0.00
System Monitoring Compounds						
4) Vinyl Chloride-d3	1.598	65	131387	44.498	ug/L	0.00
Spiked Amount	50.000	Range 60 - 135	Recovery =	89.000%		
7) Chloroethane-d5	1.913	69	114000	47.729	ug/L	0.00
Spiked Amount	50.000	Range 70 - 130	Recovery =	95.460%		
11) 1,1-Dichloroethene-d2	2.566	63	199064	43.995	ug/L	0.00
Spiked Amount	50.000	Range 60 - 125	Recovery =	88.000%		
21) 2-Butanone-d5	4.627	46	125223	109.346	ug/L	0.00
Spiked Amount	100.000	Range 40 - 130	Recovery =	109.350%		
24) Chloroform-d	5.058	84	235959	48.332	ug/L	0.00
Spiked Amount	50.000	Range 70 - 125	Recovery =	96.660%		
26) 1,2-Dichloroethane-d4	5.697	65	139164	47.692	ug/L	0.00
Spiked Amount	50.000	Range 70 - 125	Recovery =	95.380%		
32) Benzene-d6	5.723	84	470228	47.651	ug/L	0.00
Spiked Amount	50.000	Range 70 - 125	Recovery =	95.300%		
36) 1,2-Dichloropropane-d6	6.685	67	145842	47.901	ug/L	0.00
Spiked Amount	50.000	Range 70 - 120	Recovery =	95.800%		
41) Toluene-d8	7.894	98	455352	47.093	ug/L	0.00
Spiked Amount	50.000	Range 80 - 120	Recovery =	94.180%		
43) trans-1,3-Dichloroprop...	8.176	79	82456	49.414	ug/L	0.00
Spiked Amount	50.000	Range 60 - 125	Recovery =	98.820%		
47) 2-Hexanone-d5	8.630	63	104271	112.776	ug/L	0.00
Spiked Amount	100.000	Range 45 - 130	Recovery =	112.780%		
56) 1,1,2,2-Tetrachloroeth...	10.752	84	218790	51.908	ug/L	0.00
Spiked Amount	50.000	Range 65 - 120	Recovery =	103.820%		
66) 1,2-Dichlorobenzene-d4	12.189	152	177467	49.681	ug/L	0.00
Spiked Amount	50.000	Range 80 - 120	Recovery =	99.360%		
Target Compounds						
2) Dichlorodifluoromethane	1.383	85	66421	26.574	ug/L	99
3) Chloromethane	1.518	50	63108	27.388	ug/L	100
5) Vinyl chloride	1.604	62	133476	47.048	ug/L	96
6) Bromomethane	1.858	94	30696	15.676	ug/L	100
8) Chloroethane	1.932	64	48229	27.733	ug/L	97
9) Trichlorofluoromethane	2.135	101	194550	44.792	ug/L	99
10) 1,1,2-Trichloro-1,2,2-...	2.579	101	48432	22.134	ug/L	97
12) 1,1-Dichloroethene	2.579	96	86837	41.653	ug/L	92
16) Methylene chloride	3.042	84	106965	42.509	ug/L	93
17) trans-1,2-Dichloroethene	3.347	96	42827	19.207	ug/L	93
19) 1,1-Dichloroethane	3.865	63	247299	64.709	ug/L	97
20) cis-1,2-Dichloroethene	4.662	96	113870	45.260	ug/L #	92
23) Bromochloromethane	4.971	128	56981	42.000	ug/L	95
25) Chloroform	5.083	83	250389	58.600	ug/L	99
27) 1,2-Dichloroethane	5.787	62	219653	71.913	ug/L	98
30) 1,1,1-Trichloroethane	5.312	97	78863	20.624	ug/L	98
31) Carbon tetrachloride	5.521	117	184546	55.046	ug/L	98
33) Benzene	5.768	78	426496	46.770	ug/L	100
34) Trichloroethene	6.540	95	203577	82.089	ug/L	98

Data Path : Z:\voasrv\HPCHEM1\MSVOA\_U\Data\VU020823\  
 Data File : VU053004.D  
 Acq On : 08 Feb 2023 16:44  
 Operator : JC/MD  
 Sample : 01443-01  
 Misc : 5.0mL/MSVOA\_U/WATER  
 ALS Vial : 13 Sample Multiplier: 1

Instrument :  
 MSVOA\_U  
 ClientSampleId :  
 X3E90

Quant Time: Feb 13 16:35:46 2023  
 Quant Method : Z:\voasrv\HPCHEM1\MSVOA\_U\Method\SFAMULM020823WMA.M  
 Quant Title : VOC Analysis  
 QLast Update : Thu Feb 09 01:09:47 2023  
 Response via : Initial Calibration

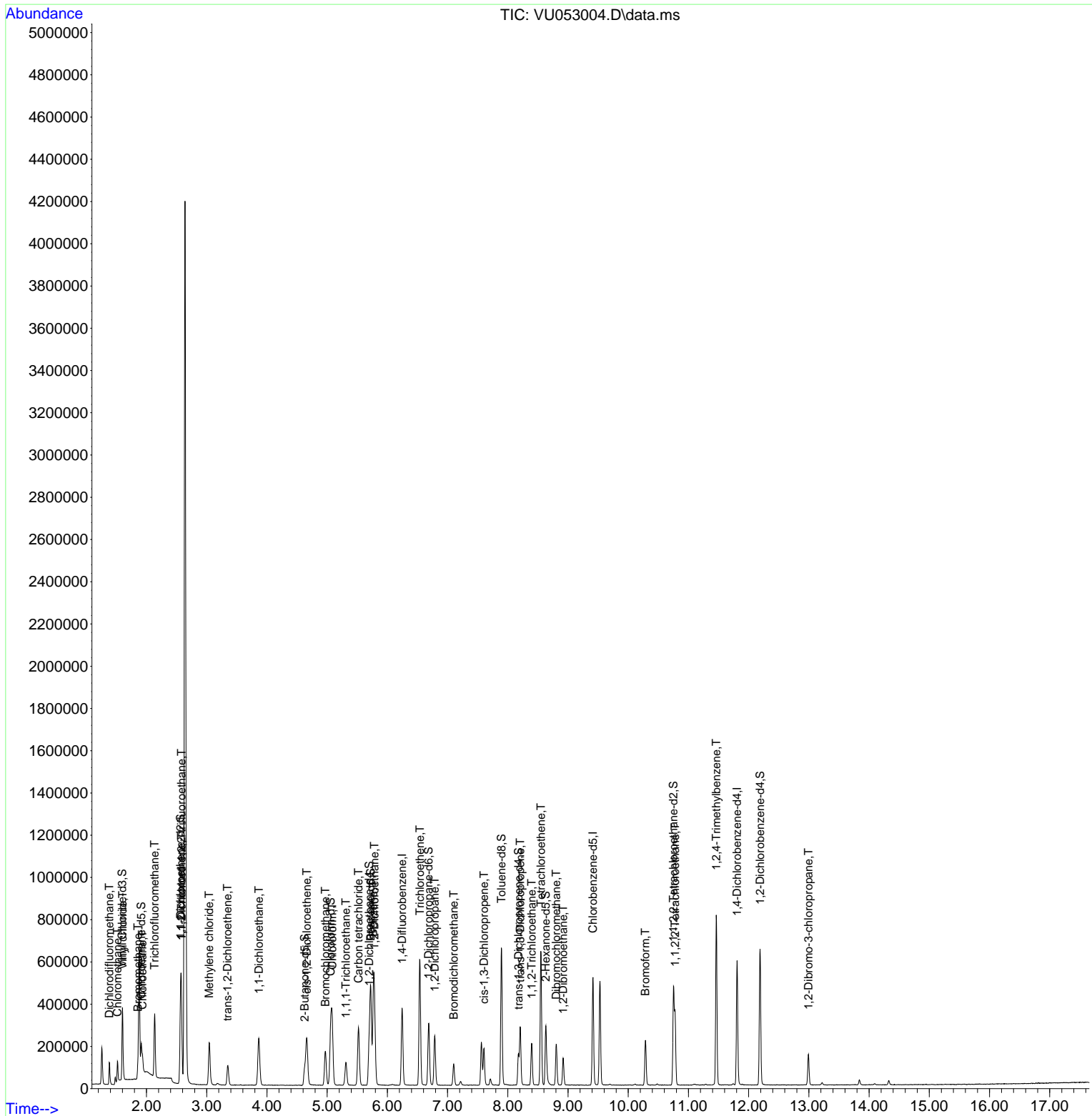
Compound	R.T.	QIon	Response	Conc	Units	Dev(Min)
37) 1,2-Dichloropropane	6.787	63	93835	40.588	ug/L	99
38) Bromodichloromethane	7.103	83	65941	19.740	ug/L	100
39) cis-1,3-Dichloropropene	7.604	75	104473	26.288	ug/L	98
44) trans-1,3-Dichloropropene	8.205	75	161847	42.010	ug/L	100
45) 1,1,2-Trichloroethane	8.395	97	63695	26.748	ug/L	98
46) Tetrachloroethene	8.549	164	141143	71.863	ug/L	97
49) Dibromochloromethane	8.803	129	101634	35.328	ug/L	99
50) 1,2-Dibromoethane	8.919	107	83901	32.206	ug/L	97
57) 1,1,2,2-Tetrachloroethane	10.778	83	157488	42.410	ug/L	99
59) Bromoform	10.286	173	95388	45.467	ug/L	97
63) 1,2,4-Trimethylbenzene	11.463	105	457131	48.315	ug/L	96
68) 1,2-Dibromo-3-chloropr...	12.993	75	36820	45.974	ug/L	92

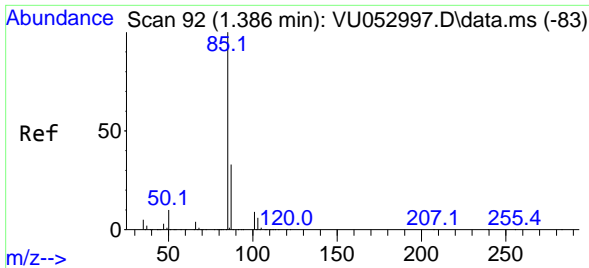
(#) = qualifier out of range (m) = manual integration (+) = signals summed

Data Path : Z:\voasrv\HPCHEM1\MSVOA\_U\Data\VU020823\  
 Data File : VU053004.D  
 Acq On : 08 Feb 2023 16:44  
 Operator : JC/MD  
 Sample : 01443-01  
 Misc : 5.0mL/MSVOA\_U/WATER  
 ALS Vial : 13 Sample Multiplier: 1

Instrument :  
 MSVOA\_U  
 ClientSampleId :  
 X3E90

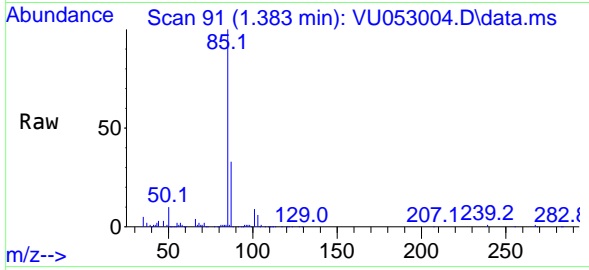
Quant Time: Feb 13 16:35:46 2023  
 Quant Method : Z:\voasrv\HPCHEM1\MSVOA\_U\Method\SFAMULM020823WMA.M  
 Quant Title : VOC Analysis  
 QLast Update : Thu Feb 09 01:09:47 2023  
 Response via : Initial Calibration



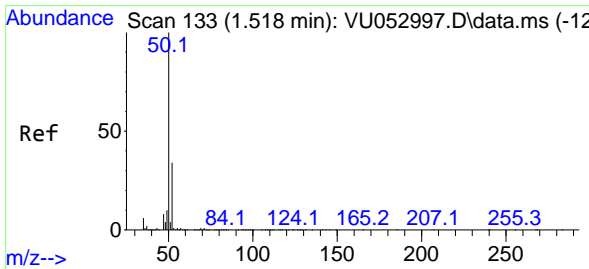
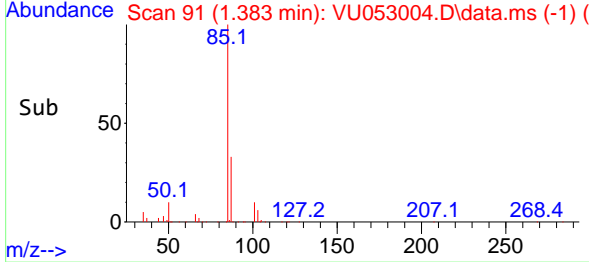
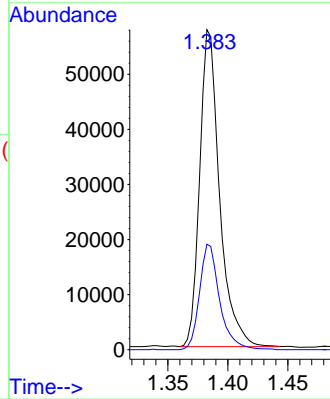


#2  
 Dichlorodifluoromethane  
 Concen: 26.574 ug/L  
 RT: 1.383 min Scan# 91  
 Delta R.T. -0.003 min  
 Lab File: VU053004.D  
 Acq: 08 Feb 2023 16:44

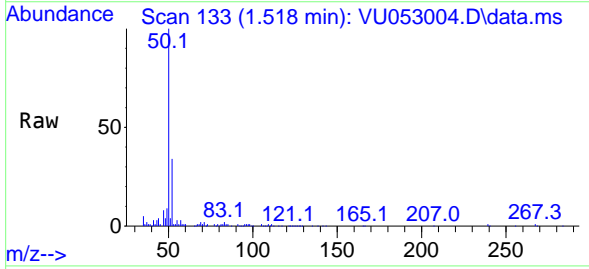
Instrument :  
 MSVOA\_U  
 ClientSampleId :  
 X3E90



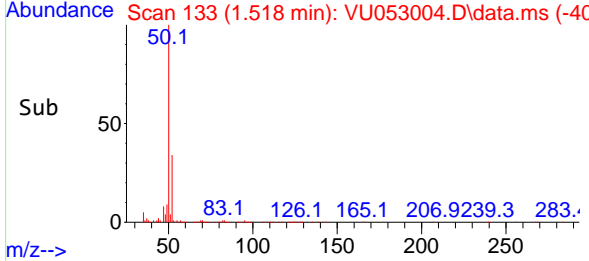
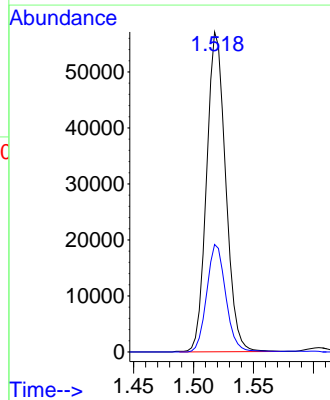
Tgt Ion: 85 Resp: 66421  
 Ion Ratio Lower Upper  
 85 100  
 87 33.6 26.4 39.6

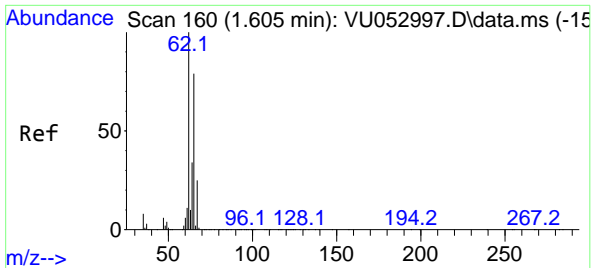


#3  
 Chloromethane  
 Concen: 27.388 ug/L  
 RT: 1.518 min Scan# 133  
 Delta R.T. -0.000 min  
 Lab File: VU053004.D  
 Acq: 08 Feb 2023 16:44



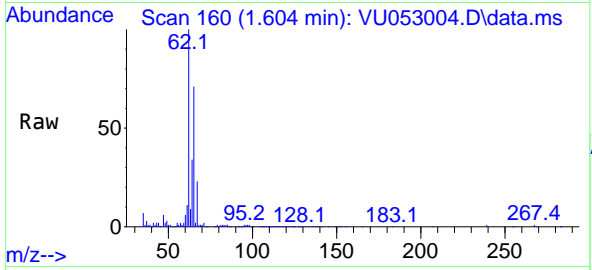
Tgt Ion: 50 Resp: 63108  
 Ion Ratio Lower Upper  
 50 100  
 52 33.6 23.4 43.4



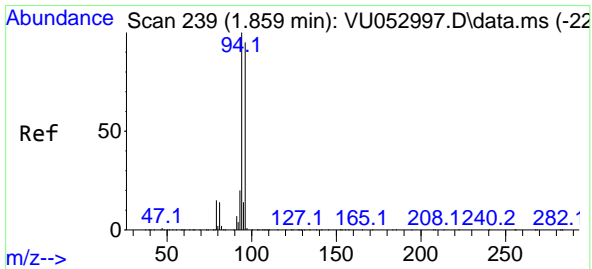
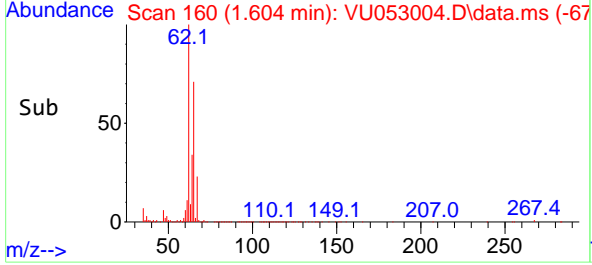
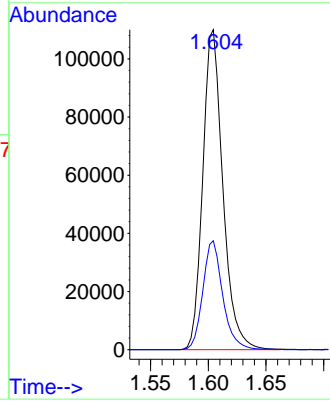


#5  
 Vinyl chloride  
 Concen: 47.048 ug/L  
 RT: 1.604 min Scan# 1  
 Delta R.T. -0.000 min  
 Lab File: VU053004.D  
 Acq: 08 Feb 2023 16:44

Instrument :  
 MSVOA\_U  
 ClientSampleId :  
 X3E90

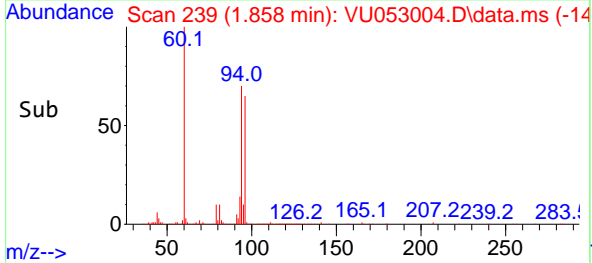
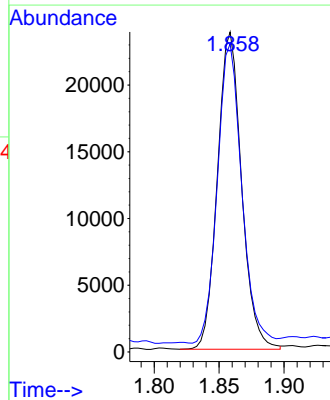
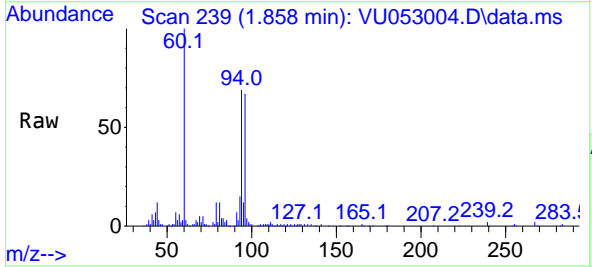


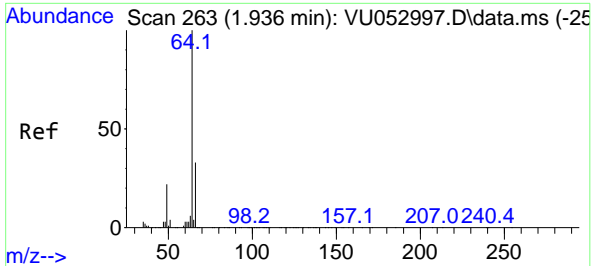
Tgt Ion: 62 Resp: 133476  
 Ion Ratio Lower Upper  
 62 100  
 64 34.0 22.4 41.6



#6  
 Bromomethane  
 Concen: 15.676 ug/L  
 RT: 1.858 min Scan# 239  
 Delta R.T. -0.000 min  
 Lab File: VU053004.D  
 Acq: 08 Feb 2023 16:44

Tgt Ion: 94 Resp: 30696  
 Ion Ratio Lower Upper  
 94 100  
 96 96.3 67.8 125.8

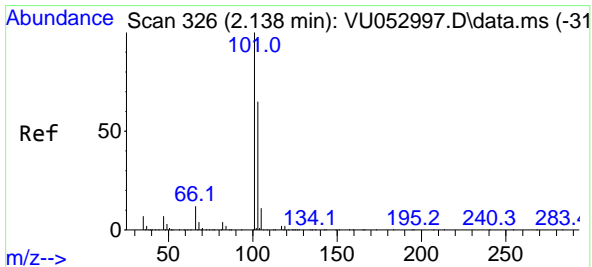
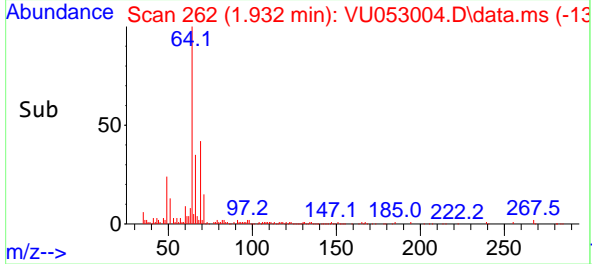
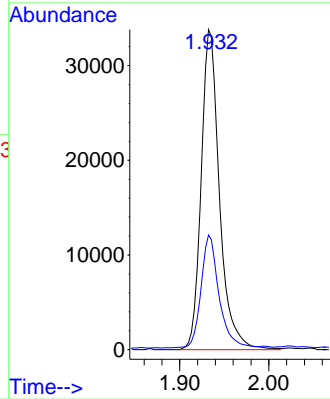
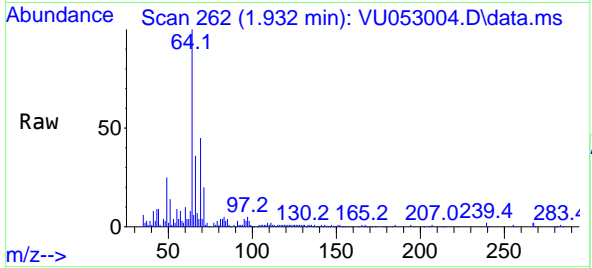




#8  
 Chloroethane  
 Concen: 27.733 ug/L  
 RT: 1.932 min Scan# 20  
 Delta R.T. -0.003 min  
 Lab File: VU053004.D  
 Acq: 08 Feb 2023 16:44

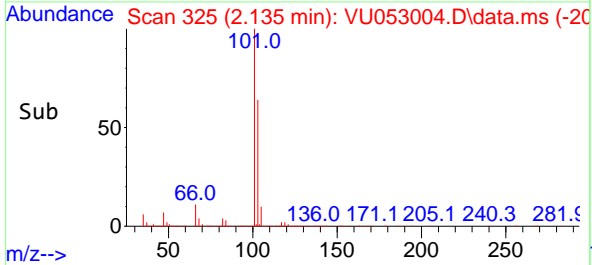
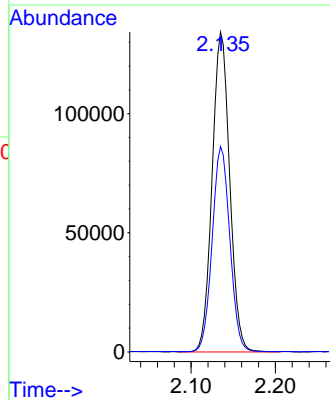
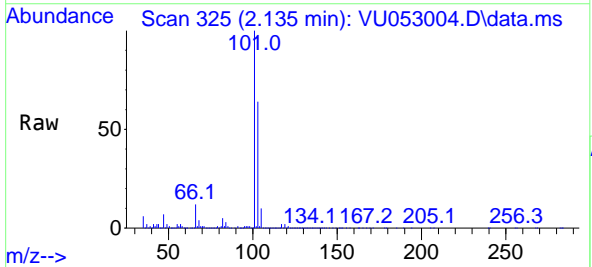
Instrument :  
 MSVOA\_U  
 ClientSampleId :  
 X3E90

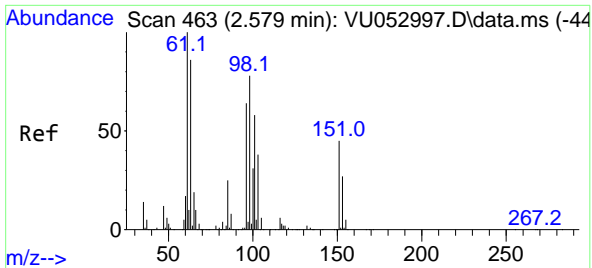
Tgt Ion: 64 Resp: 48229  
 Ion Ratio Lower Upper  
 64 100  
 66 35.9 24.1 44.7



#9  
 Trichlorofluoromethane  
 Concen: 44.792 ug/L  
 RT: 2.135 min Scan# 325  
 Delta R.T. -0.003 min  
 Lab File: VU053004.D  
 Acq: 08 Feb 2023 16:44

Tgt Ion:101 Resp: 194550  
 Ion Ratio Lower Upper  
 101 100  
 103 64.2 52.0 78.0



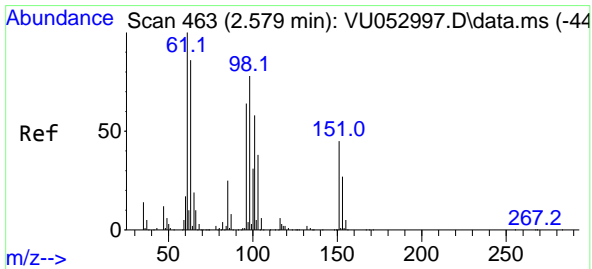
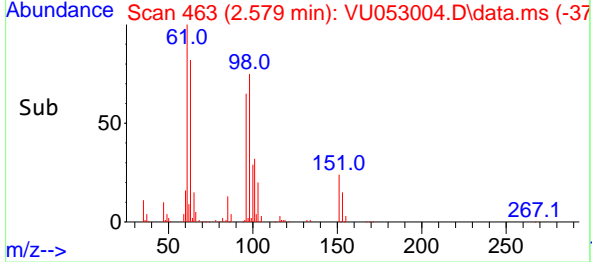
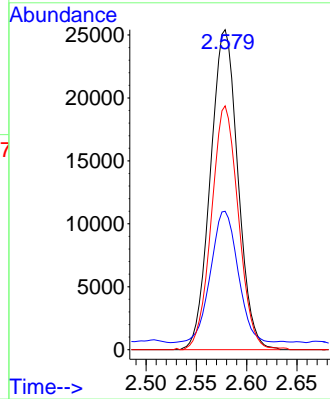
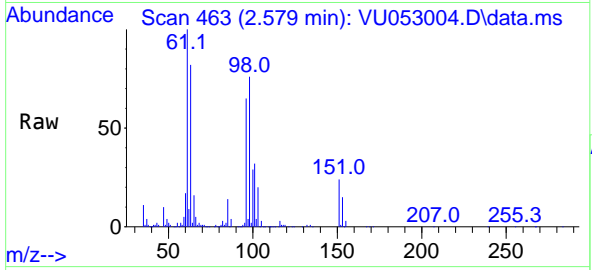


#10  
 1,1,2-Trichloro-1,2,2-trifluoroethane  
 Concen: 22.134 ug/L  
 RT: 2.579 min Scan# 463  
 Delta R.T. -0.000 min  
 Lab File: VU053004.D  
 Acq: 08 Feb 2023 16:44

Instrument : MSVOA\_U  
 ClientSampleId : X3E90

Tgt Ion: 101 Resp: 48432

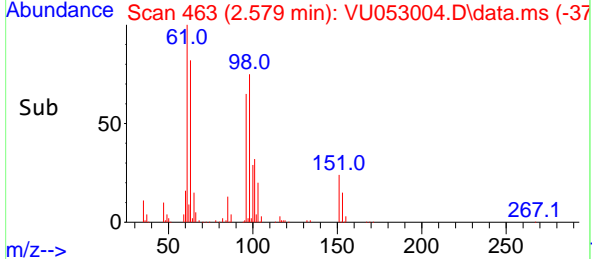
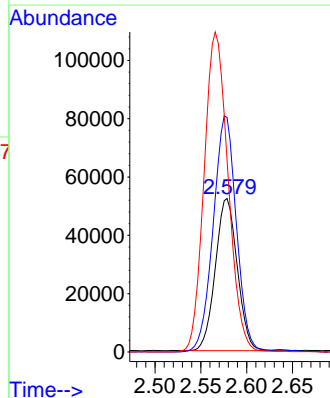
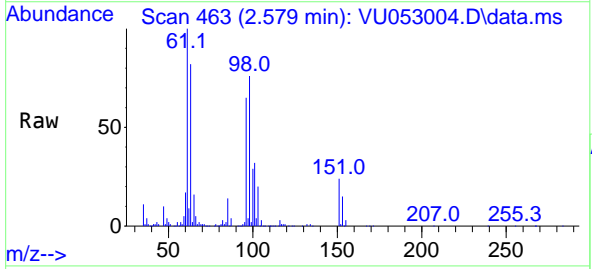
Ion	Ratio	Lower	Upper
101	100		
85	40.9	32.9	49.3
151	74.9	62.6	94.0

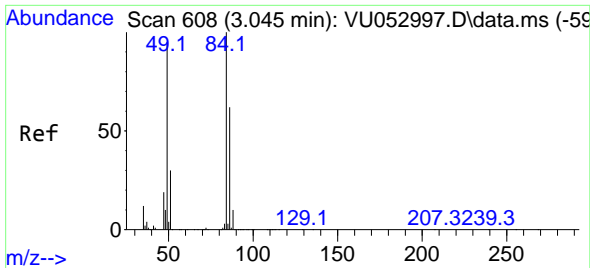


#12  
 1,1-Dichloroethene  
 Concen: 41.653 ug/L  
 RT: 2.579 min Scan# 463  
 Delta R.T. -0.000 min  
 Lab File: VU053004.D  
 Acq: 08 Feb 2023 16:44

Tgt Ion: 96 Resp: 86837

Ion	Ratio	Lower	Upper
96	100		
61	152.7	114.3	212.3
63	124.7	80.6	149.6



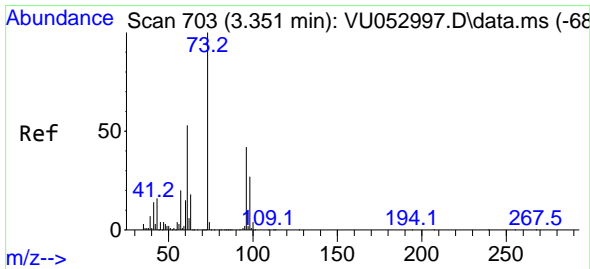
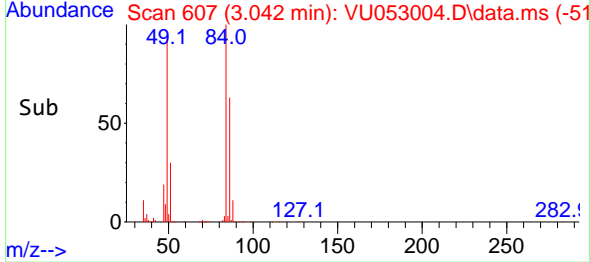
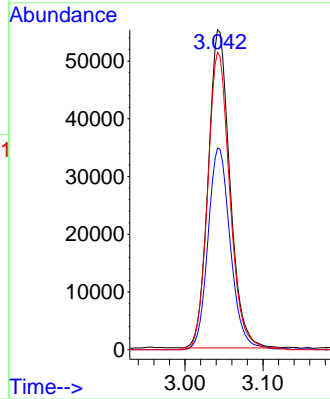
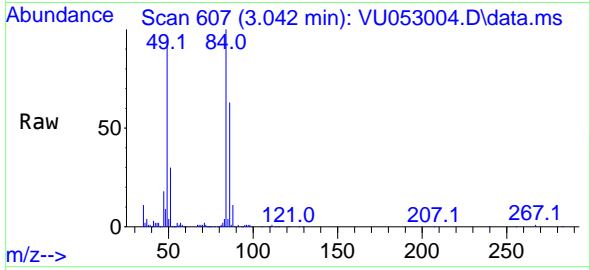


#16  
 Methylene chloride  
 Concen: 42.509 ug/L  
 RT: 3.042 min Scan# 608  
 Delta R.T. -0.003 min  
 Lab File: VU053004.D  
 Acq: 08 Feb 2023 16:44

Instrument : MSVOA\_U  
 ClientSampleId : X3E90

Tgt Ion: 84 Resp: 106965

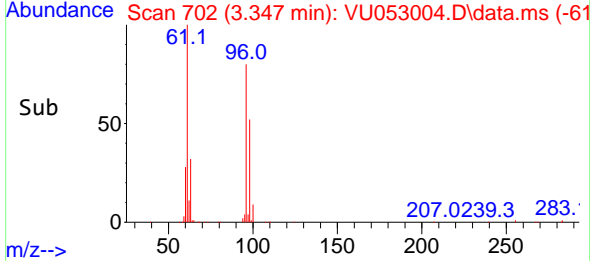
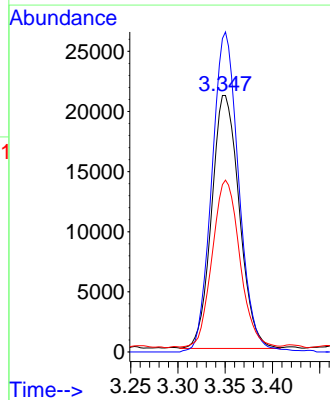
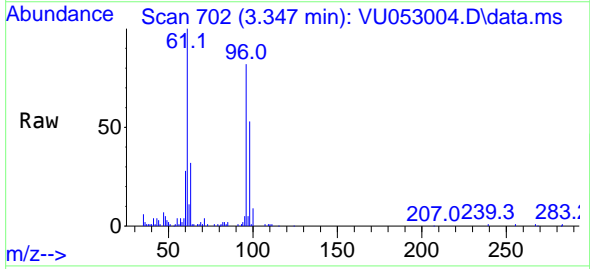
Ion	Ratio	Lower	Upper
84	100		
86	63.0	43.4	80.6
49	93.0	72.4	134.5



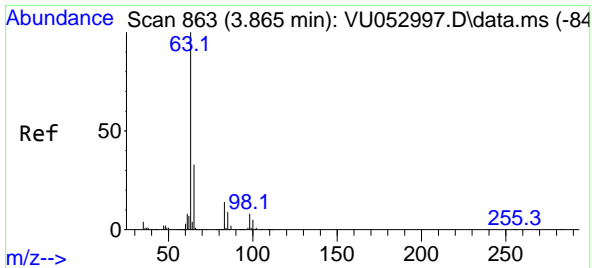
#17  
 trans-1,2-Dichloroethene  
 Concen: 19.207 ug/L  
 RT: 3.347 min Scan# 702  
 Delta R.T. -0.003 min  
 Lab File: VU053004.D  
 Acq: 08 Feb 2023 16:44

Tgt Ion: 96 Resp: 42827

Ion	Ratio	Lower	Upper
96	100		
61	122.2	92.7	172.3
98	65.3	44.7	82.9

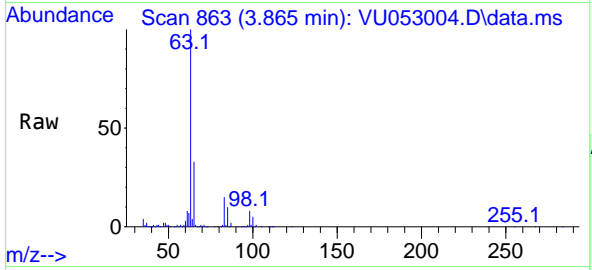






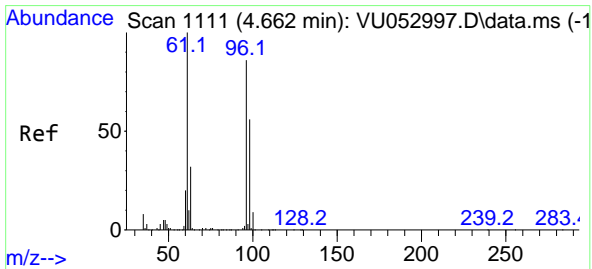
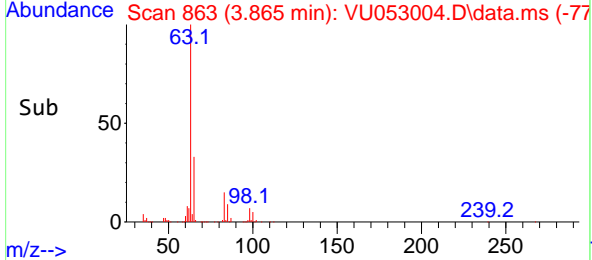
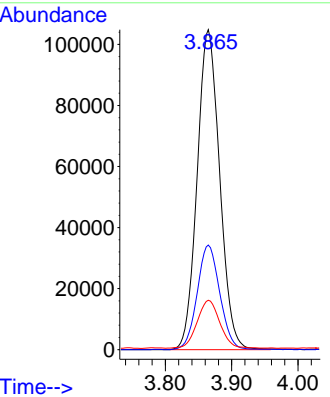
#19  
 1,1-Dichloroethane  
 Concen: 64.709 ug/L  
 RT: 3.865 min Scan# 863  
 Delta R.T. -0.000 min  
 Lab File: VU053004.D  
 Acq: 08 Feb 2023 16:44

Instrument : MSVOA\_U  
 ClientSampleId : X3E90

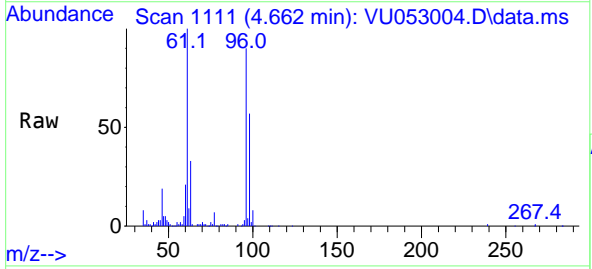


Tgt Ion: 63 Resp: 247299

Ion	Ratio	Lower	Upper
63	100		
65	32.7	22.4	41.6
83	15.5	9.2	17.2

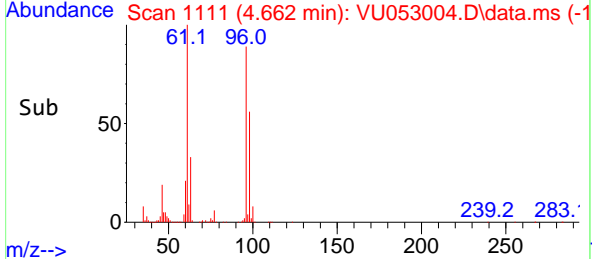
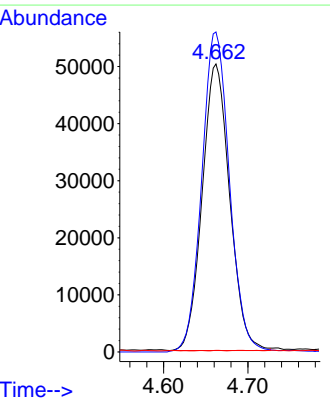


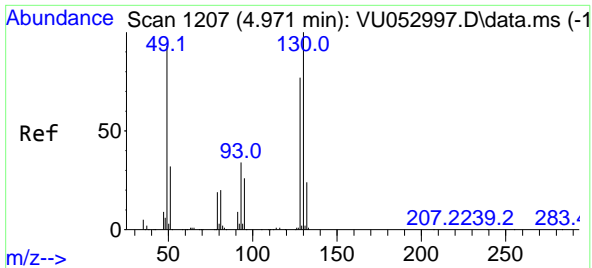
#20  
 cis-1,2-Dichloroethene  
 Concen: 45.260 ug/L  
 RT: 4.662 min Scan# 1111  
 Delta R.T. -0.000 min  
 Lab File: VU053004.D  
 Acq: 08 Feb 2023 16:44



Tgt Ion: 96 Resp: 113870

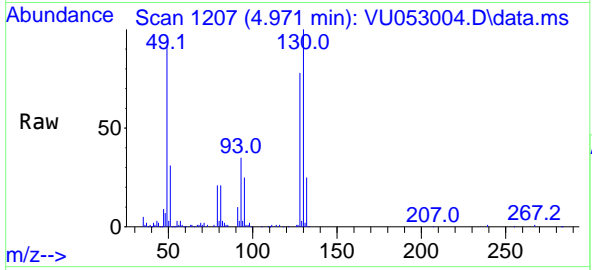
Ion	Ratio	Lower	Upper
96	100		
61	111.1	84.1	156.1
68	0.6	0.0	0.0





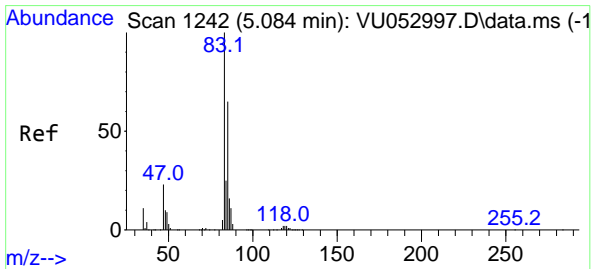
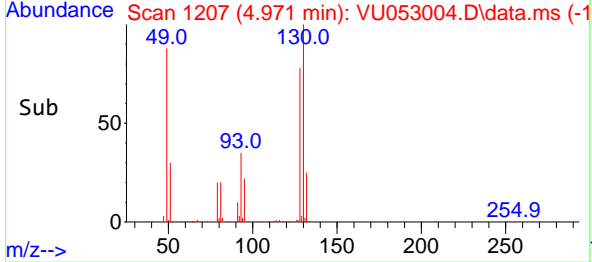
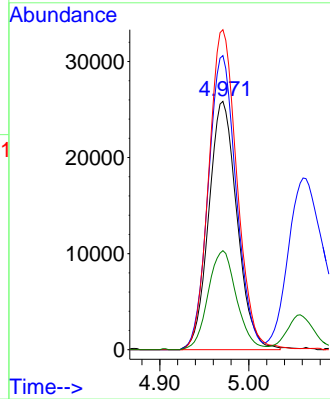
#23  
 Bromochloromethane  
 Concen: 42.000 ug/L  
 RT: 4.971 min Scan# 11  
 Delta R.T. -0.000 min  
 Lab File: VU053004.D  
 Acq: 08 Feb 2023 16:44

Instrument : MSVOA\_U  
 ClientSampleId : X3E90



Tgt Ion:128 Resp: 56981

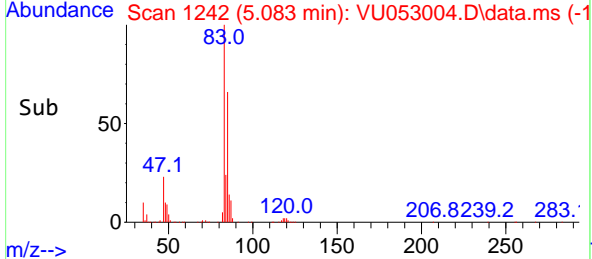
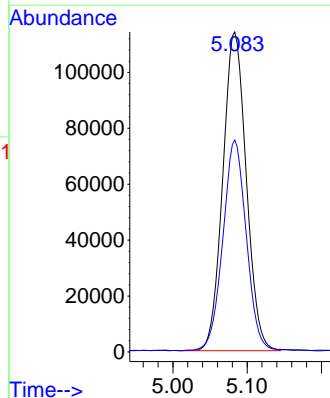
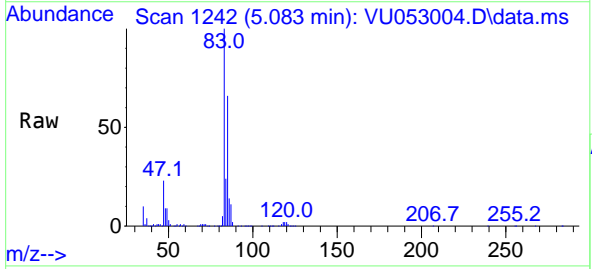
Ion	Ratio	Lower	Upper
128	100		
49	118.4	90.1	167.3
130	128.8	90.1	167.3
51	39.9	35.0	52.6

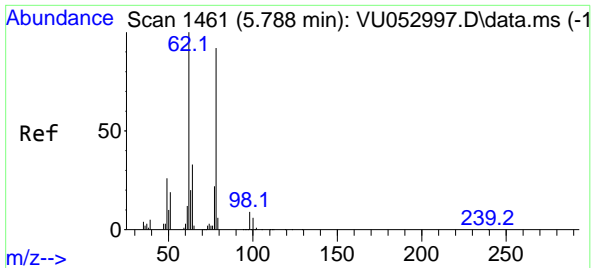


#25  
 Chloroform  
 Concen: 58.600 ug/L  
 RT: 5.083 min Scan# 1242  
 Delta R.T. -0.000 min  
 Lab File: VU053004.D  
 Acq: 08 Feb 2023 16:44

Tgt Ion: 83 Resp: 250389

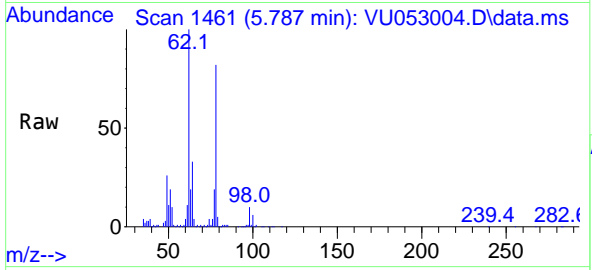
Ion	Ratio	Lower	Upper
83	100		
85	66.3	45.8	85.0



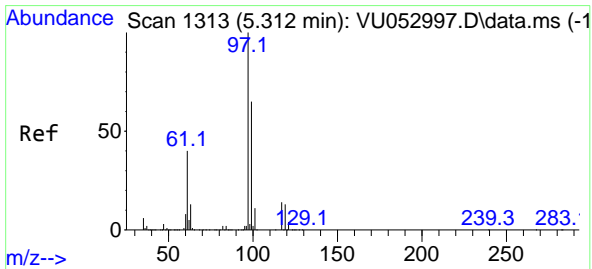
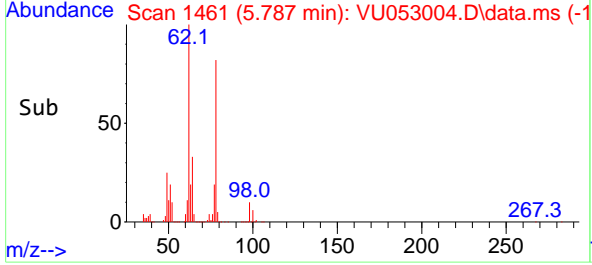
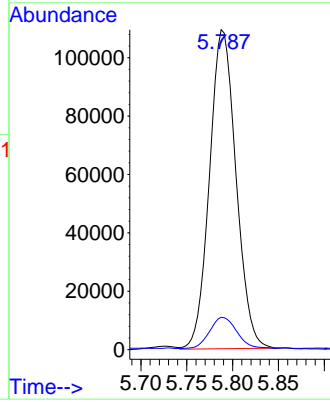


#27  
 1,2-Dichloroethane  
 Concen: 71.913 ug/L  
 RT: 5.787 min Scan# 1461  
 Delta R.T. -0.000 min  
 Lab File: VU053004.D  
 Acq: 08 Feb 2023 16:44

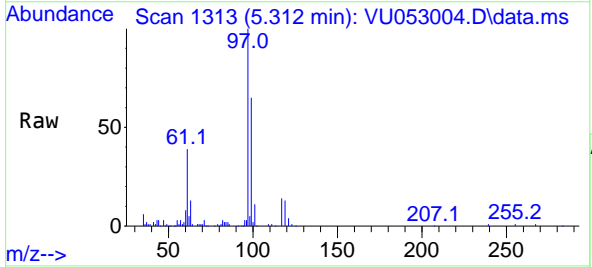
Instrument : MSVOA\_U  
 ClientSampleId : X3E90



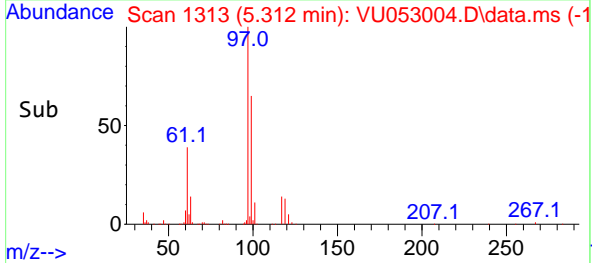
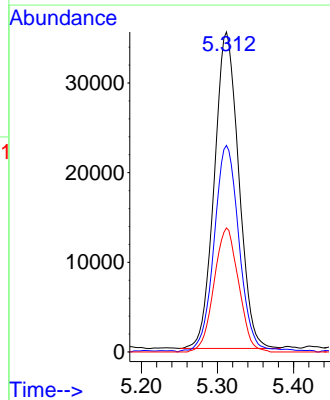
Tgt Ion: 62 Resp: 219653  
 Ion Ratio Lower Upper  
 62 100  
 98 10.1 7.6 11.4

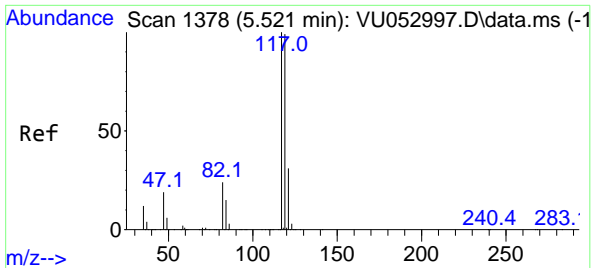


#30  
 1,1,1-Trichloroethane  
 Concen: 20.624 ug/L  
 RT: 5.312 min Scan# 1313  
 Delta R.T. -0.000 min  
 Lab File: VU053004.D  
 Acq: 08 Feb 2023 16:44



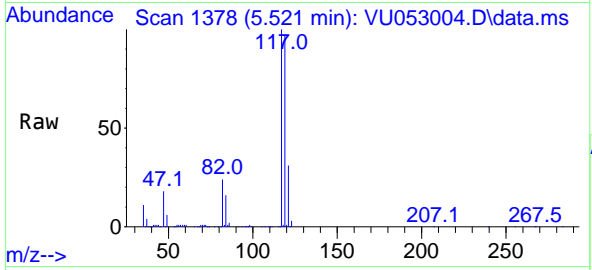
Tgt Ion: 97 Resp: 78863  
 Ion Ratio Lower Upper  
 97 100  
 99 64.9 51.4 77.0  
 61 39.4 33.0 49.6



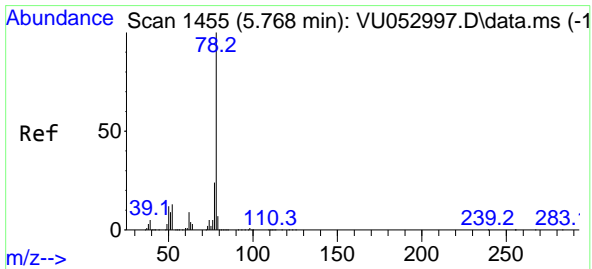
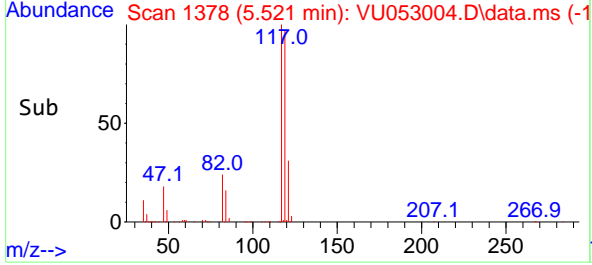
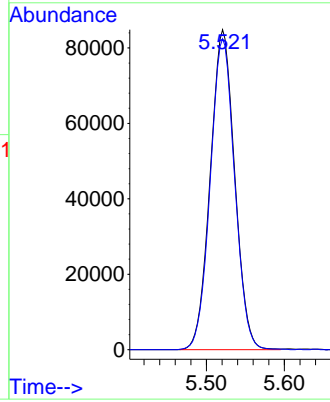


#31  
 Carbon tetrachloride  
 Concen: 55.046 ug/L  
 RT: 5.521 min Scan# 111  
 Delta R.T. -0.000 min  
 Lab File: VU053004.D  
 Acq: 08 Feb 2023 16:44

Instrument : MSVOA\_U  
 ClientSampleId : X3E90

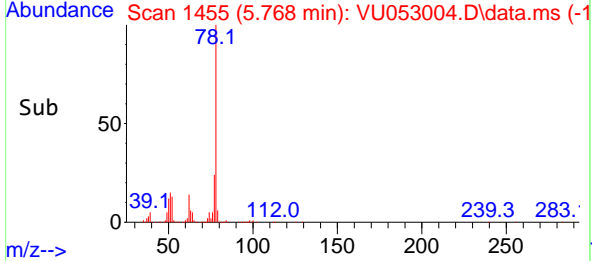
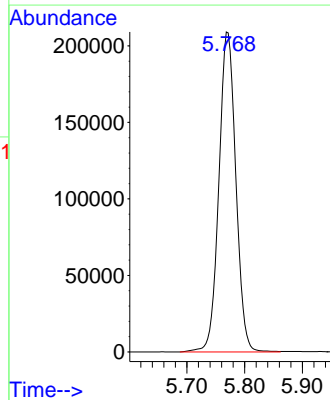
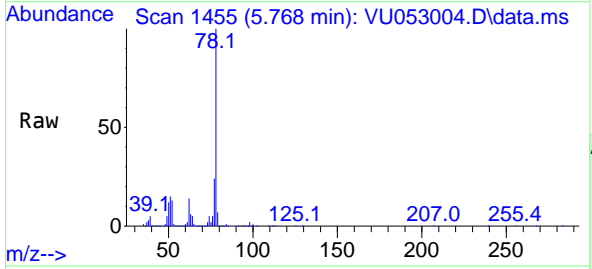


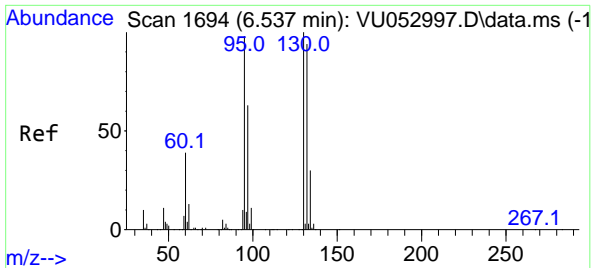
Tgt Ion:117 Resp: 184546  
 Ion Ratio Lower Upper  
 117 100  
 119 96.9 76.2 114.4



#33  
 Benzene  
 Concen: 46.770 ug/L  
 RT: 5.768 min Scan# 1455  
 Delta R.T. -0.000 min  
 Lab File: VU053004.D  
 Acq: 08 Feb 2023 16:44

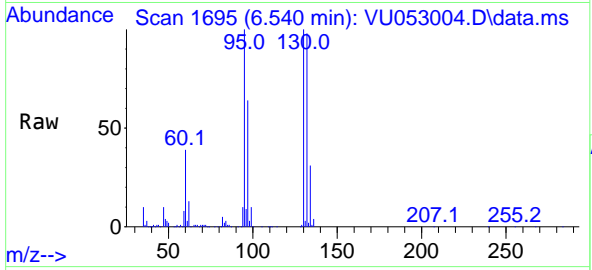
Tgt Ion: 78 Resp: 426496



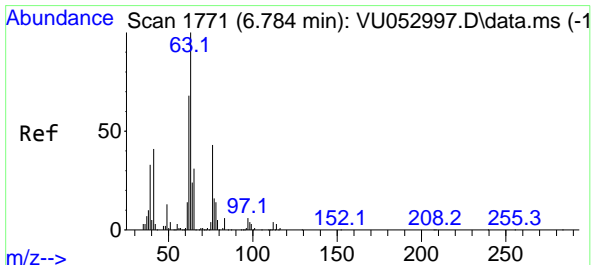
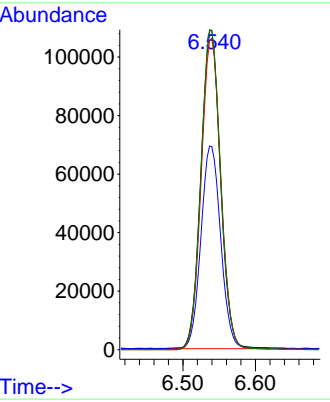
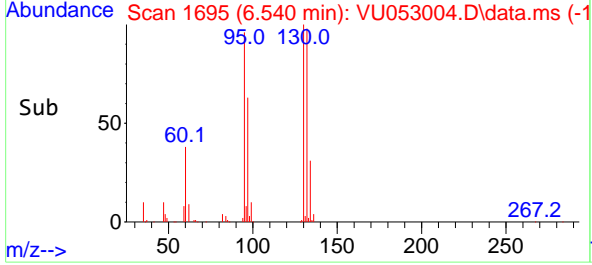


#34  
 Trichloroethene  
 Concen: 82.089 ug/L  
 RT: 6.540 min Scan# 1  
 Delta R.T. 0.003 min  
 Lab File: VU053004.D  
 Acq: 08 Feb 2023 16:44

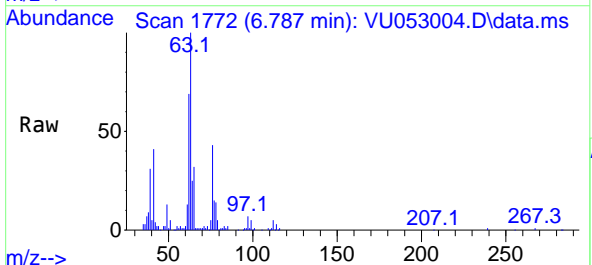
Instrument : MSVOA\_U  
 ClientSampleId : X3E90



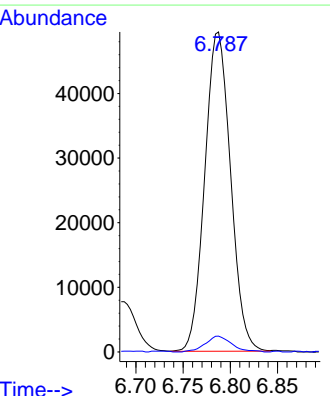
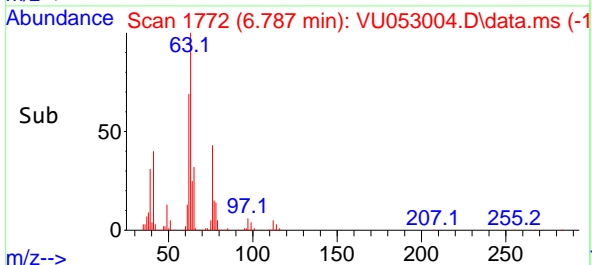
Tgt Ion: 95 Resp: 203577  
 Ion Ratio Lower Upper  
 95 100  
 97 63.7 44.5 82.7  
 132 97.6 66.8 124.0  
 130 100.1 71.9 133.5

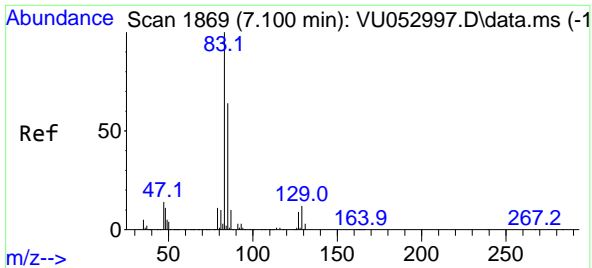


#37  
 1,2-Dichloropropane  
 Concen: 40.588 ug/L  
 RT: 6.787 min Scan# 1772  
 Delta R.T. 0.003 min  
 Lab File: VU053004.D  
 Acq: 08 Feb 2023 16:44



Tgt Ion: 63 Resp: 93835  
 Ion Ratio Lower Upper  
 63 100  
 112 5.1 3.8 5.8



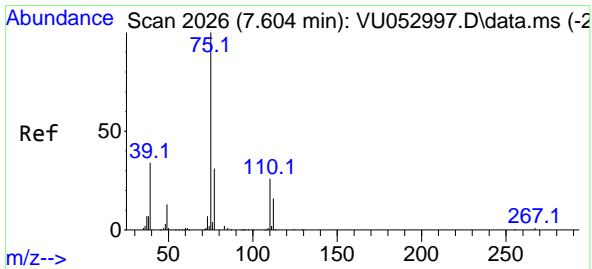
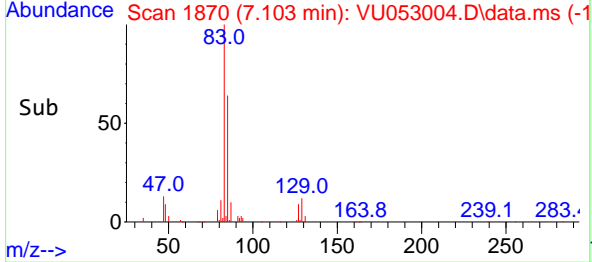
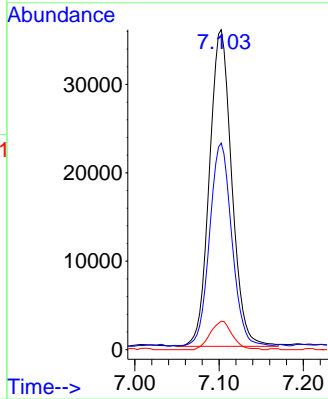
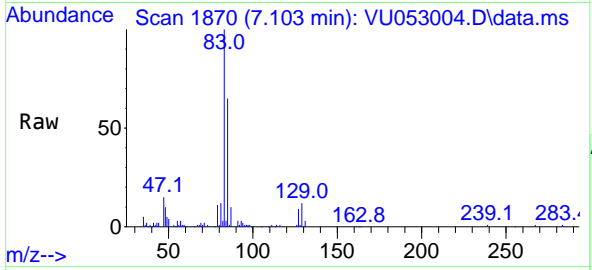


#38  
 Bromodichloromethane  
 Concen: 19.740 ug/L  
 RT: 7.103 min Scan# 1869  
 Delta R.T. 0.003 min  
 Lab File: VU053004.D  
 Acq: 08 Feb 2023 16:44

Instrument : MSVOA\_U  
 ClientSampleId : X3E90

Tgt Ion: 83 Resp: 65941

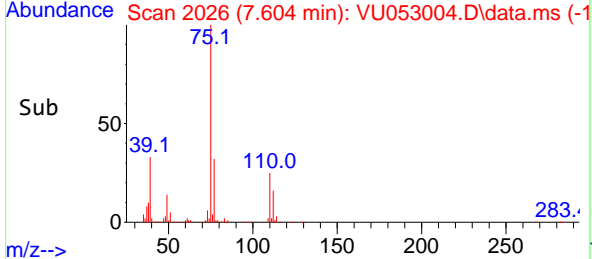
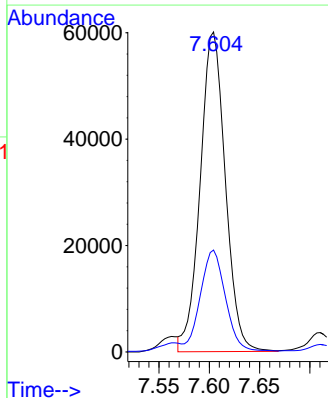
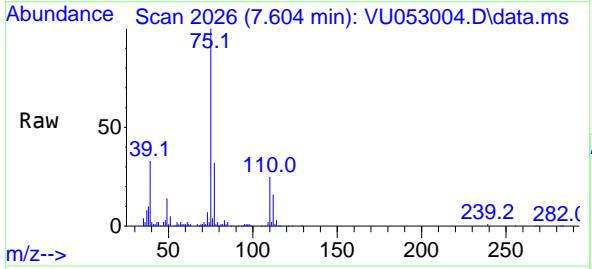
Ion	Ratio	Lower	Upper
83	100		
85	64.5	45.2	84.0
127	8.9	7.4	11.0

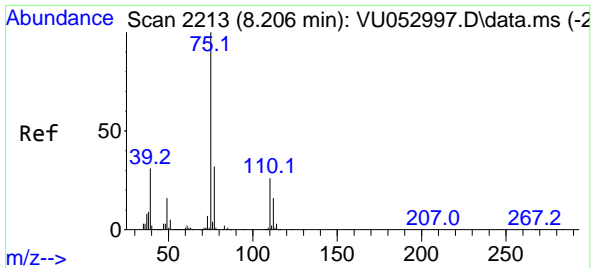


#39  
 cis-1,3-Dichloropropene  
 Concen: 26.288 ug/L  
 RT: 7.604 min Scan# 2026  
 Delta R.T. -0.000 min  
 Lab File: VU053004.D  
 Acq: 08 Feb 2023 16:44

Tgt Ion: 75 Resp: 104473

Ion	Ratio	Lower	Upper
75	100		
77	31.9	21.6	40.0

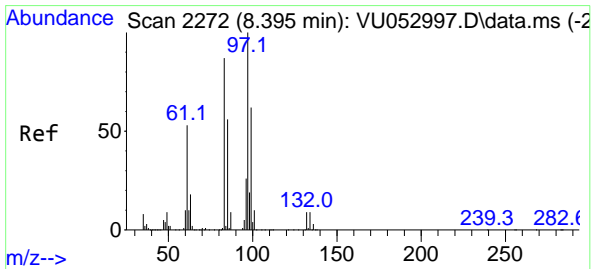
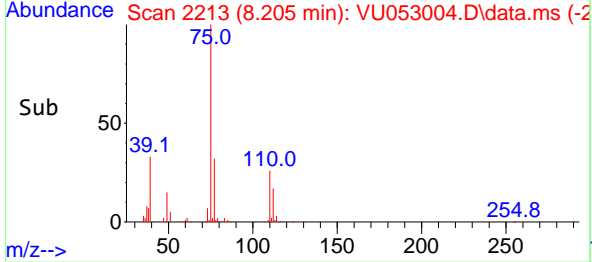
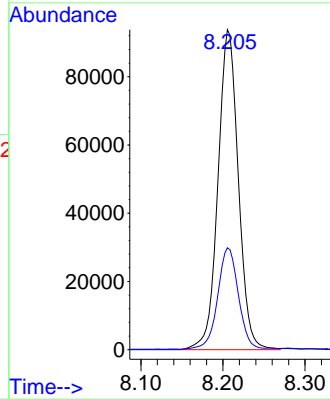
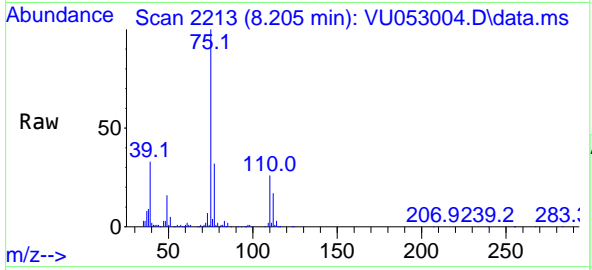




#44  
 trans-1,3-Dichloropropene  
 Concen: 42.010 ug/L  
 RT: 8.205 min Scan# 211  
 Delta R.T. -0.000 min  
 Lab File: VU053004.D  
 Acq: 08 Feb 2023 16:44

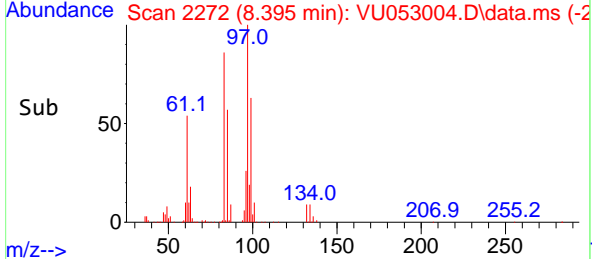
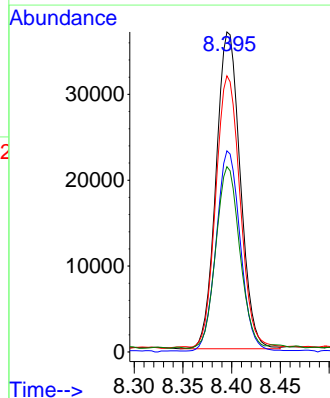
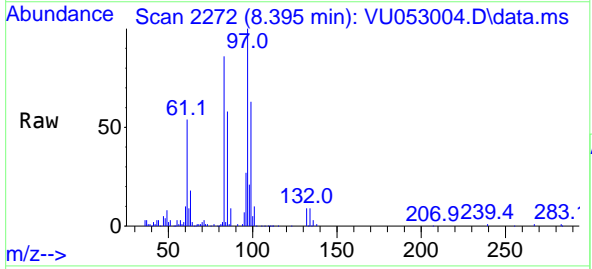
Instrument : MSVOA\_U  
 ClientSampleId : X3E90

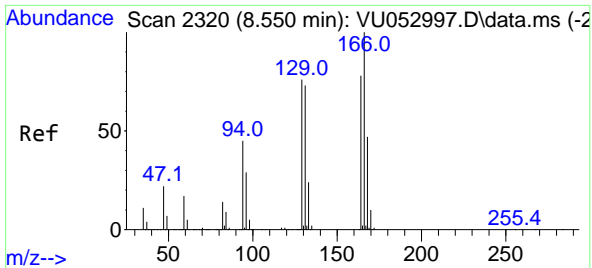
Tgt Ion: 75 Resp: 161847  
 Ion Ratio Lower Upper  
 75 100  
 77 31.9 22.3 41.3



#45  
 1,1,2-Trichloroethane  
 Concen: 26.748 ug/L  
 RT: 8.395 min Scan# 2272  
 Delta R.T. -0.000 min  
 Lab File: VU053004.D  
 Acq: 08 Feb 2023 16:44

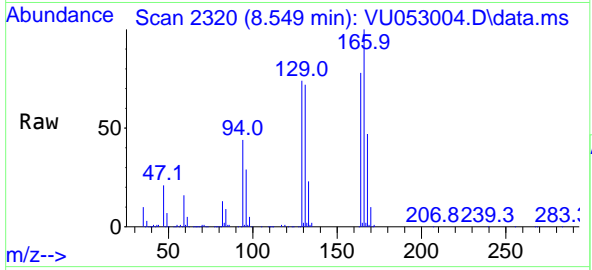
Tgt Ion: 97 Resp: 63695  
 Ion Ratio Lower Upper  
 97 100  
 99 62.8 44.7 83.1  
 83 86.3 60.3 112.1  
 85 57.9 38.3 71.1





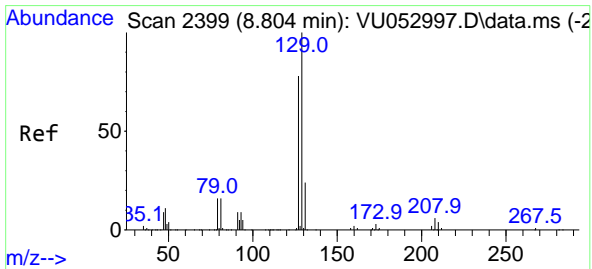
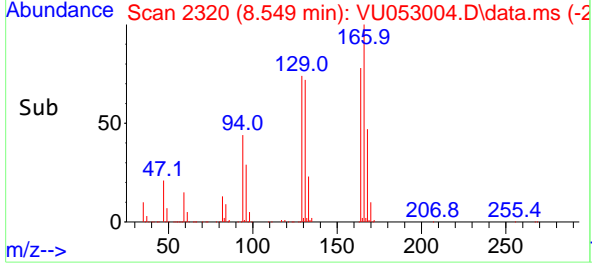
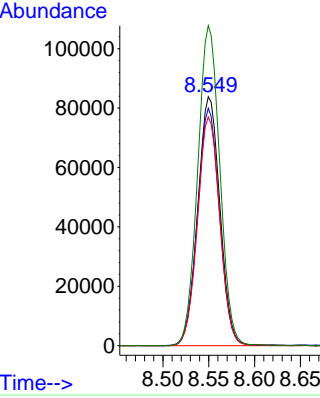
#46  
 Tetrachloroethene  
 Concen: 71.863 ug/L  
 RT: 8.549 min Scan# 211  
 Delta R.T. -0.000 min  
 Lab File: VU053004.D  
 Acq: 08 Feb 2023 16:44

Instrument : MSVOA\_U  
 ClientSampleId : X3E90



Tgt Ion:164 Resp: 141143

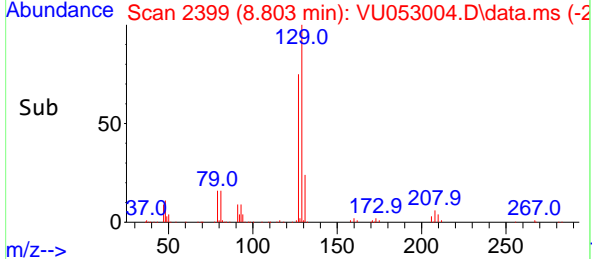
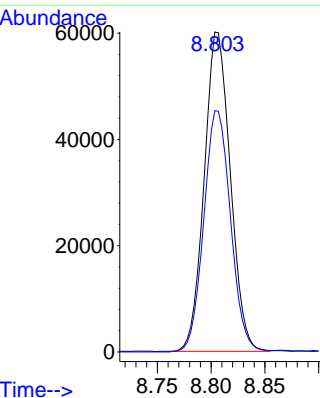
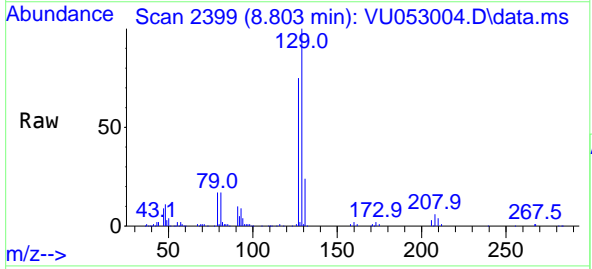
Ion	Ratio	Lower	Upper
164	100		
129	95.4	64.8	120.3
131	91.9	61.2	113.6
166	128.6	89.2	165.8



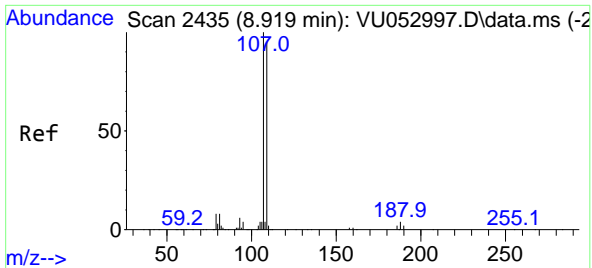
#49  
 Dibromochloromethane  
 Concen: 35.328 ug/L  
 RT: 8.803 min Scan# 2399  
 Delta R.T. -0.000 min  
 Lab File: VU053004.D  
 Acq: 08 Feb 2023 16:44

Tgt Ion:129 Resp: 101634

Ion	Ratio	Lower	Upper
129	100		
127	75.4	53.2	98.8

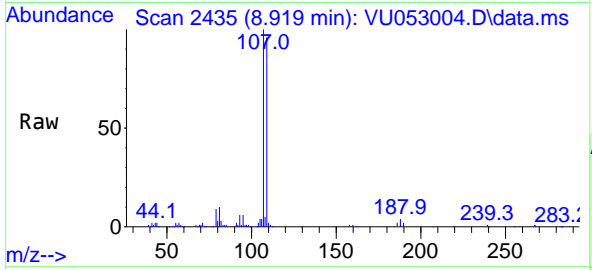






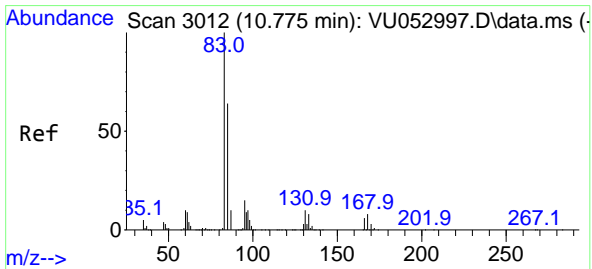
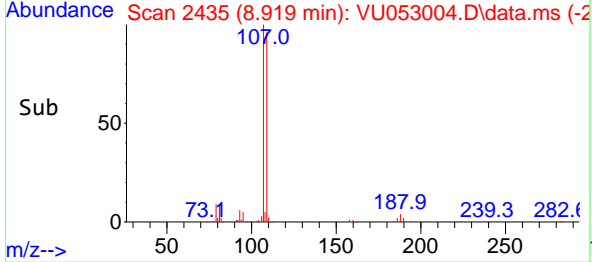
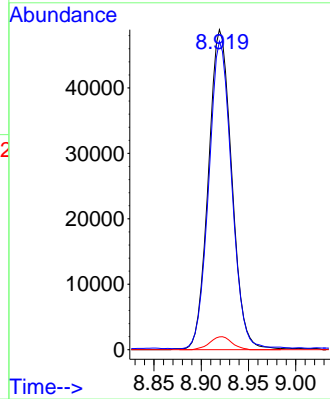
#50  
 1,2-Dibromoethane  
 Concen: 32.206 ug/L  
 RT: 8.919 min Scan# 2435  
 Delta R.T. -0.000 min  
 Lab File: VU053004.D  
 Acq: 08 Feb 2023 16:44

Instrument : MSVOA\_U  
 ClientSampleId : X3E90

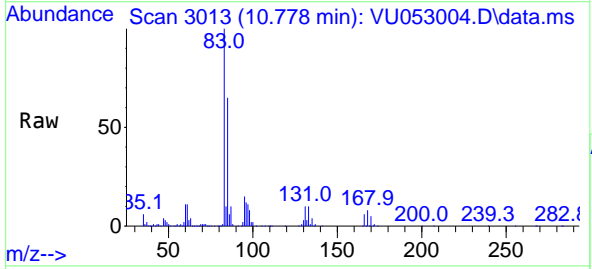


Tgt Ion: 107 Resp: 83901

Ion	Ratio	Lower	Upper
107	100		
109	96.4	65.5	121.6
188	4.0	3.2	4.8

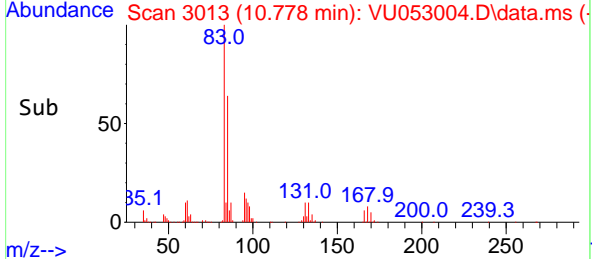
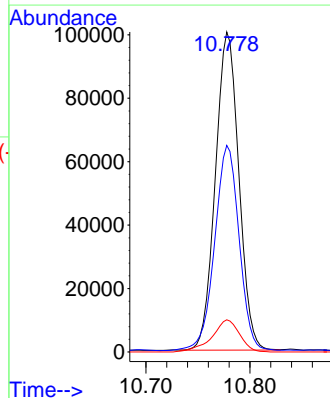


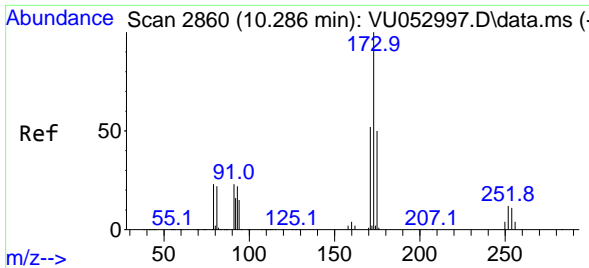
#57  
 1,1,2,2-Tetrachloroethane  
 Concen: 42.410 ug/L  
 RT: 10.778 min Scan# 3013  
 Delta R.T. 0.003 min  
 Lab File: VU053004.D  
 Acq: 08 Feb 2023 16:44



Tgt Ion: 83 Resp: 157488

Ion	Ratio	Lower	Upper
83	100		
85	64.5	45.0	83.6
131	10.0	8.6	12.8



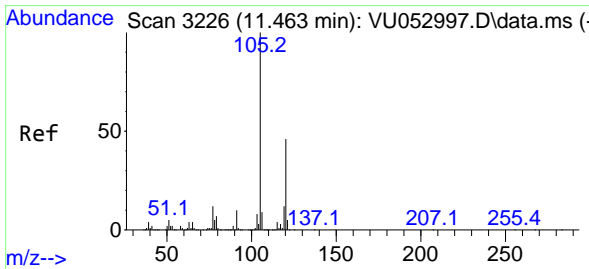
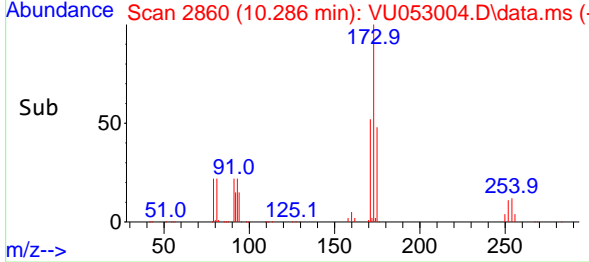
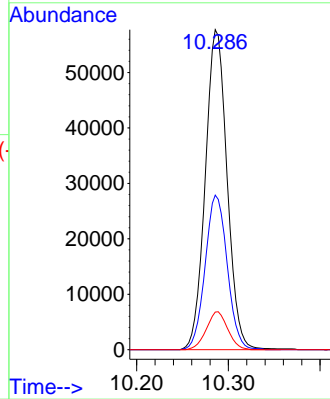
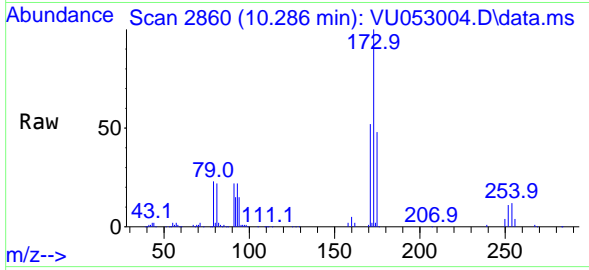


#59  
 Bromoform  
 Concen: 45.467 ug/L  
 RT: 10.286 min Scan# 2860  
 Delta R.T. -0.000 min  
 Lab File: VU053004.D  
 Acq: 08 Feb 2023 16:44

Instrument :  
 MSVOA\_U  
 ClientSampleId :  
 X3E90

Tgt Ion:173 Resp: 95388

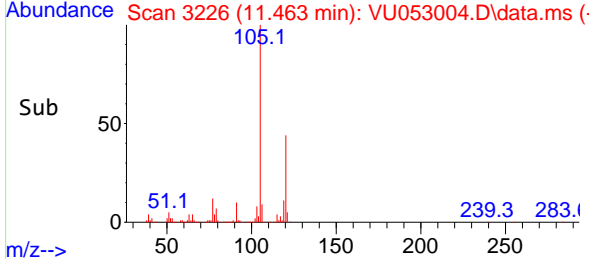
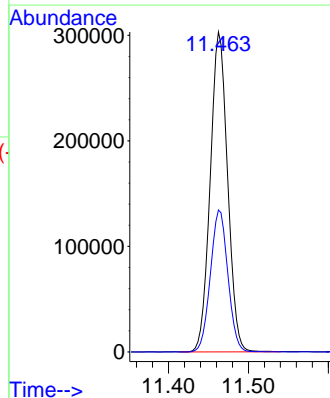
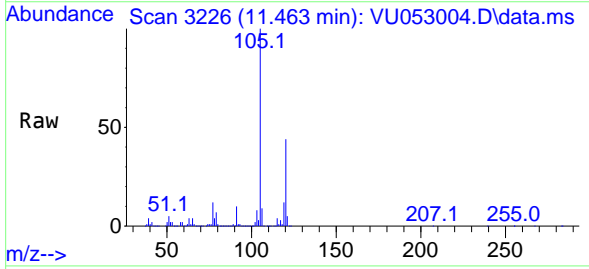
Ion	Ratio	Lower	Upper
173	100		
175	48.9	37.7	56.5
254	11.6	8.3	12.5

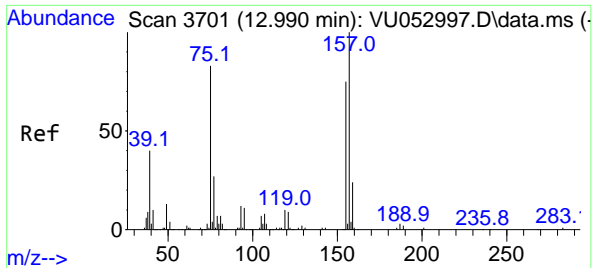


#63  
 1,2,4-Trimethylbenzene  
 Concen: 48.315 ug/L  
 RT: 11.463 min Scan# 3226  
 Delta R.T. -0.000 min  
 Lab File: VU053004.D  
 Acq: 08 Feb 2023 16:44

Tgt Ion:105 Resp: 457131

Ion	Ratio	Lower	Upper
105	100		
120	44.7	38.1	57.1





#68  
 1,2-Dibromo-3-chloropropane  
 Concen: 45.974 ug/L  
 RT: 12.993 min Scan# 31  
 Delta R.T. 0.003 min  
 Lab File: VU053004.D  
 Acq: 08 Feb 2023 16:44

Instrument :  
 MSVOA\_U  
 ClientSampleId :  
 X3E90

Tgt Ion: 75 Resp: 36820

Ion	Ratio	Lower	Upper
75	100		
155	93.7	69.2	103.8
157	122.3	91.2	136.8

