

Data File : VU029418.D
 Acq On : 12 Feb 2019 14:15
 Operator : JC/SP
 Sample : VSTDICV005
 Misc : 25.0mL/MSVOA_U/WATER
 ALS Vial : 8 Sample Multiplier: 1

Instrument :
 MSVOA_U
 Client Sampled :
 VICV50

Quant Time: Feb 13 03:20:01 2019
 Quant Method : Z:\VOASRV\HPCHEM1\MSVOA_U\METHOD\SOMUTR021219WMA.M
 Quant Title : TRACE VOA SOM01.0
 QLast Update : Wed Feb 13 03:15:20 2019
 Response via : Initial Calibration

Internal Standards	R.T.	QIon	Response	Conc	Units	Dev(Min)
1) 1,4-Difluorobenzene	5.88	114	211388	5.00	ug/L	0.00
28) Chlorobenzene-d5	9.09	117	198448	5.00	ug/L	0.00
60) 1,4-Dichlorobenzene-d4	11.48	152	109671	5.00	ug/L	0.00

System Monitoring Compounds

4) Vinyl Chloride-d3	1.40	65	70064	4.93	ug/L	0.00
Spiked Amount	5.000	Range	40 - 130	Recovery	=	98.60%
7) Chloroethane-d5	1.68	69	70379	5.61	ug/L	0.00
Spiked Amount	5.000	Range	65 - 130	Recovery	=	112.20%
11) 1,1-Dichloroethene-d2	2.27	63	157540	5.10	ug/L	0.00
Spiked Amount	5.000	Range	60 - 125	Recovery	=	102.00%
20) 2-Butanone-d5	4.20	46	150707	51.04	ug/L	0.00
Spiked Amount	50.000	Range	40 - 130	Recovery	=	102.08%
24) Chloroform-d	4.65	84	115273	5.10	ug/L	0.00
Spiked Amount	5.000	Range	70 - 125	Recovery	=	102.00%
26) 1,2-Dichloroethane-d4	5.31	65	58812	4.89	ug/L	0.00
Spiked Amount	5.000	Range	70 - 130	Recovery	=	97.80%
32) Benzene-d6	5.34	84	239508	5.02	ug/L	0.00
Spiked Amount	5.000	Range	70 - 125	Recovery	=	100.40%
36) 1,2-Dichloropropane-d6	6.33	67	70541	5.00	ug/L	0.00
Spiked Amount	5.000	Range	60 - 140	Recovery	=	100.00%
41) Toluene-d8	7.56	98	237395	5.04	ug/L	0.00
Spiked Amount	5.000	Range	70 - 130	Recovery	=	100.80%
43) trans-1,3-Dichloropropene-	7.85	79	32795	5.21	ug/L	0.00
Spiked Amount	5.000	Range	55 - 130	Recovery	=	104.20%
46) 2-Hexanone-d5	8.31	63	149195	51.45	ug/L	0.00
Spiked Amount	50.000	Range	45 - 130	Recovery	=	102.90%
57) 1,1,2,2-Tetrachloroethane-	10.43	84	61728	5.04	ug/L	0.00
Spiked Amount	5.000	Range	65 - 120	Recovery	=	100.80%
64) 1,2-Dichlorobenzene-d4	11.86	152	104102	5.15	ug/L	0.00
Spiked Amount	5.000	Range	80 - 120	Recovery	=	103.00%

Target Compounds

						Qvalue
2) Dichlorodifluoromethane	1.21	85	90385	4.882	ug/L	97
3) Chloromethane	1.32	50	86636	4.959	ug/L	99
5) Vinyl chloride	1.40	62	101821	5.002	ug/L	99
6) Bromomethane	1.63	94	69581	5.859	ug/L	99
8) Chloroethane	1.70	64	70074	5.286	ug/L	99
9) Trichlorofluoromethane	1.88	101	156857	5.034	ug/L	100
10) 1,1,2-Trichloro-1,2,2-trif	2.29	101	94279	5.133	ug/L	98
12) 1,1-Dichloroethene	2.28	96	85523	4.916	ug/L	97
13) Acetone	2.33	43	136291	50.804	ug/L	99
14) Carbon disulfide	2.48	76	295839	5.161	ug/L	99
15) Methyl Acetate	2.62	43	34794	5.063	ug/L	97
16) Methylene chloride	2.70	84	95460	4.883	ug/L	99
17) Methyl tert-butyl Ether	3.00	73	218637	5.019	ug/L	100
18) trans-1,2-Dichloroethene	2.98	96	95830	5.166	ug/L	99
19) 1,1-Dichloroethane	3.44	63	124211	4.445	ug/L	99
21) 2-Butanone	4.28	43	168029	50.689	ug/L	100
22) cis-1,2-Dichloroethene	4.22	96	83485	4.893	ug/L	97

Data File : VU029418.D
 Acq On : 12 Feb 2019 14:15
 Operator : JC/SP
 Sample : VSTDICV005
 Misc : 25.0mL/MSVOA_U/WATER
 ALS Vial : 8 Sample Multiplier: 1

Instrument :
 MSVOA_U
 ClientSampleId :
 VICV50

Quant Time: Feb 13 03:20:01 2019
 Quant Method : Z:\VOASRV\HPCHEM1\MSVOA_U\METHOD\SOMUTR021219WMA.M
 Quant Title : TRACE VOA SOM01.0
 QLast Update : Wed Feb 13 03:15:20 2019
 Response via : Initial Calibration

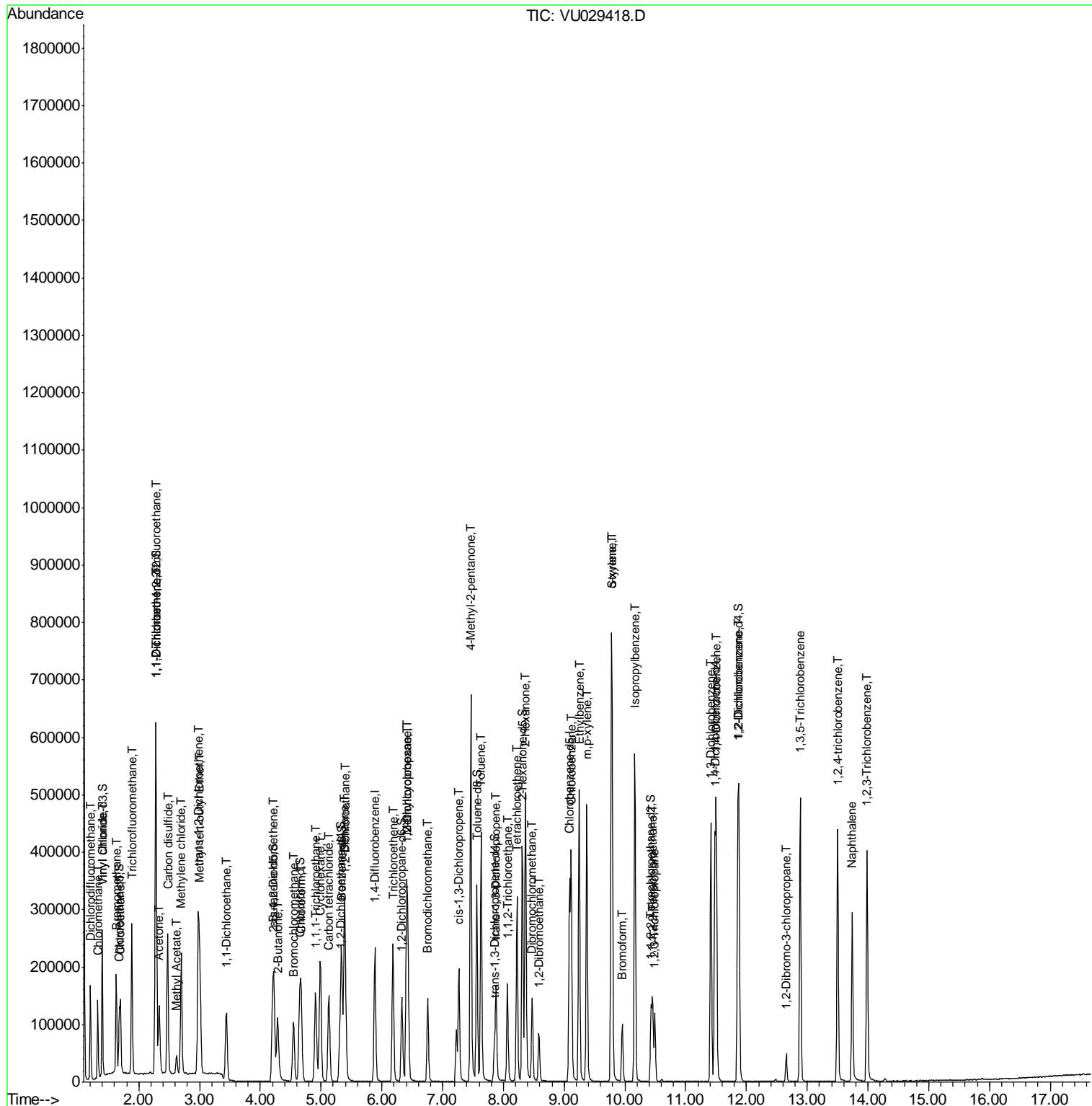
Internal Standards	R.T.	QIon	Response	Conc	Units	Dev(Min)
23) Bromochloromethane	4.55	128	38856	5.044	ug/L	96
25) Chloroform	4.67	83	137589	4.921	ug/L	97
27) 1,2-Dichloroethane	5.41	62	79513	4.914	ug/L	100
29) 1,1,1-Trichloroethane	4.91	97	122302	4.983	ug/L	99
30) Cyclohexane	4.99	56	117127	4.980	ug/L	99
31) Carbon tetrachloride	5.13	117	109457	4.935	ug/L	99
33) Benzene	5.39	78	287576	4.923	ug/L	100
34) Trichloroethene	6.18	95	82259	5.009	ug/L	99
35) Methylcyclohexane	6.41	83	137807	4.988	ug/L	99
37) 1,2-Dichloropropane	6.43	63	72489	4.955	ug/L	99
38) Bromodichloromethane	6.76	83	94713	4.899	ug/L	100
39) cis-1,3-Dichloropropene	7.27	75	116380	5.054	ug/L	99
40) 4-Methyl-2-pentanone	7.46	43	424490	50.334	ug/L	99
42) Toluene	7.63	91	327693	4.998	ug/L	98
44) trans-1,3-Dichloropropene	7.88	75	95619	5.057	ug/L	97
45) 1,1,2-Trichloroethane	8.06	97	55294	4.934	ug/L	98
47) Tetrachloroethene	8.22	164	74475	4.950	ug/L	97
48) 2-Hexanone	8.36	43	308540	50.197	ug/L	99
49) Dibromochloromethane	8.48	129	76703	5.078	ug/L	99
50) 1,2-Dibromoethane	8.59	107	55293	4.985	ug/L	97
51) Chlorobenzene	9.12	112	222914	4.944	ug/L	98
52) Ethylbenzene	9.25	91	373197	5.027	ug/L	100
53) m,p-xylene	9.37	106	146353	4.944	ug/L	98
54) o-xylene	9.78	106	143585	4.941	ug/L	99
55) Styrene	9.79	104	241983	5.016	ug/L	98
56) Isopropylbenzene	10.16	105	381593	4.979	ug/L	100
58) 1,1,2,2-Tetrachloroethane	10.46	83	68226	4.988	ug/L	100
59) 1,2,3-Trichloropropane	10.49	75	46553	4.960	ug/L	97
61) Bromoform	9.95	173	46881	5.050	ug/L	100
62) 1,3-Dichlorobenzene	11.41	146	195705	5.037	ug/L	98
63) 1,4-Dichlorobenzene	11.50	146	196844	5.073	ug/L	99
65) 1,2-Dichlorobenzene	11.88	146	183296	5.007	ug/L	99
66) 1,2-Dibromo-3-chloropropan	12.66	75	11540	5.039	ug/L	95
67) 1,3,5-Trichlorobenzene	12.88	180	165438	5.132	ug/L	100
68) 1,2,4-trichlorobenzene	13.50	180	147065	5.416	ug/L	99
69) Naphthalene	13.74	128	255047	5.439	ug/L	100
70) 1,2,3-Trichlorobenzene	13.98	180	137398	5.293	ug/L	100

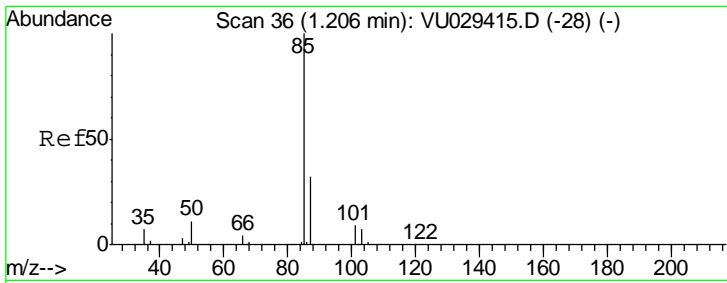
(#) = qualifier out of range (m) = manual integration (+) = signals summed

Data File : VU029418.D
Acq On : 12 Feb 2019 14:15
Operator : JC/SP
Sample : VSTDICV005
Misc : 25.0mL/MSVOA_U/WATER
ALS Vial : 8 Sample Multiplier: 1

Instrument :
MSVOA_U
Client Sampled :
VICV50

Quant Time: Feb 13 03:20:01 2019
Quant Method : Z:\VOASRV\HPCHEM1\MSVOA_U\METHOD\SOMUTR021219WMA.M
Quant Title : TRACE VOA SOM01.0
QLast Update : Wed Feb 13 03:15:20 2019
Response via : Initial Calibration

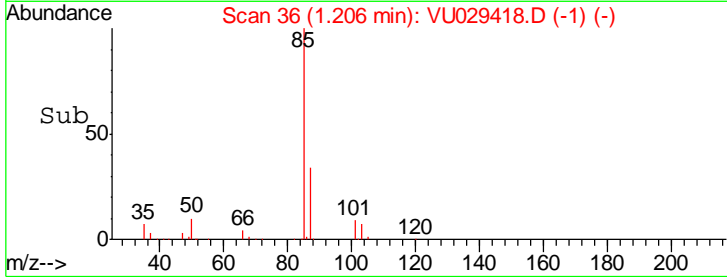
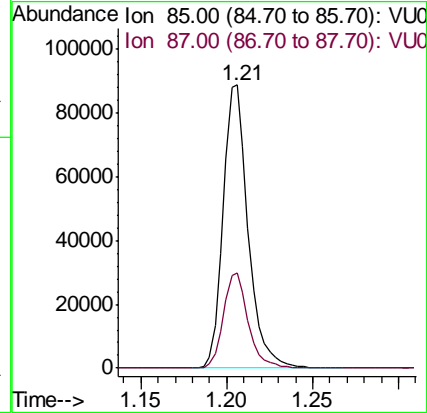
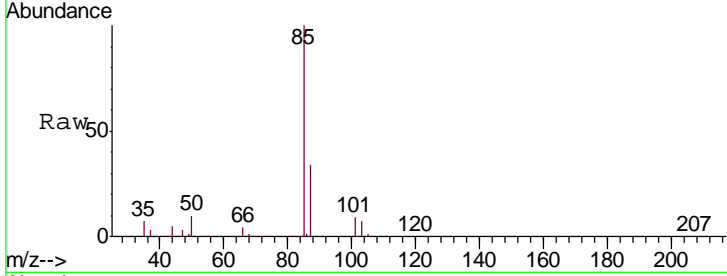




#2
 Dichlorodifluoromethane
 Concen: 4.882 ug/L
 RT: 1.21 min Scan# 36
 Delta R.T. -0.00 min
 Lab File: VU029418.D
 Acq: 12 Feb 2019 14:15

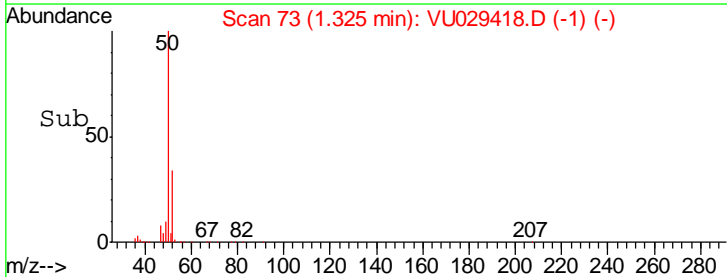
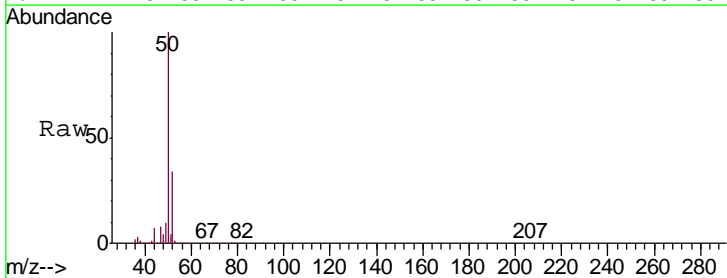
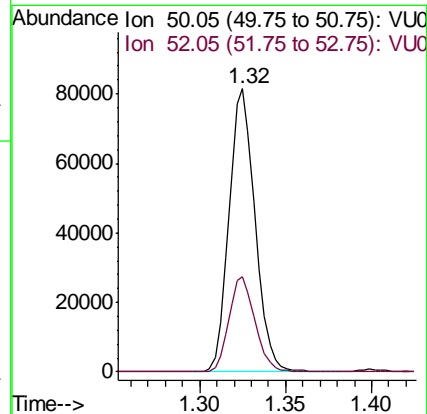
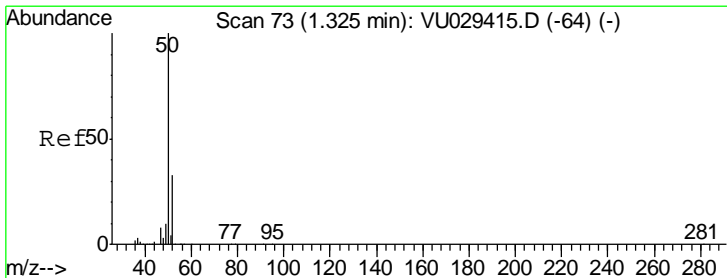
Instrument : MSVOA_U
 ClientSampled : VICV50

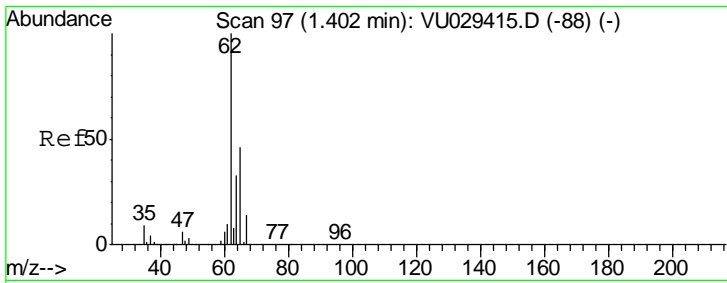
Tgt Ion: 85 Resp: 90385
 Ion Ratio Lower Upper
 85 100
 87 33.3 25.4 38.0



#3
 Chloromethane
 Concen: 4.959 ug/L
 RT: 1.32 min Scan# 73
 Delta R.T. -0.00 min
 Lab File: VU029418.D
 Acq: 12 Feb 2019 14:15

Tgt Ion: 50 Resp: 86636
 Ion Ratio Lower Upper
 50 100
 52 33.6 23.1 42.9

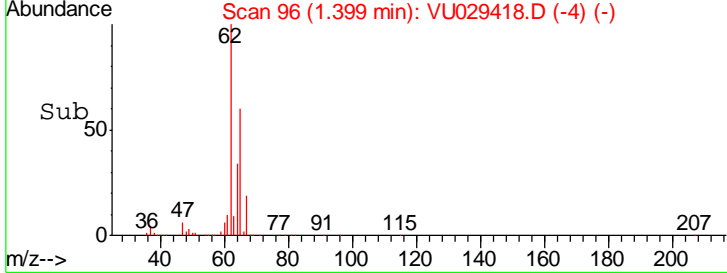
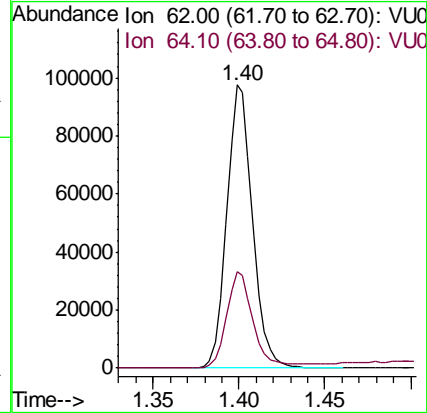
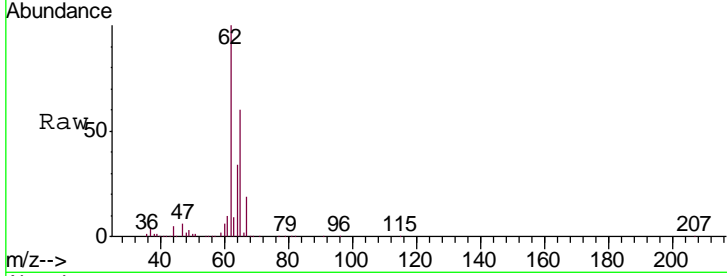




#5
 Vinyl chloride
 Concen: 5.002 ug/L
 RT: 1.40 min Scan# 96
 Delta R.T. -0.00 min
 Lab File: VU029418.D
 Acq: 12 Feb 2019 14:15

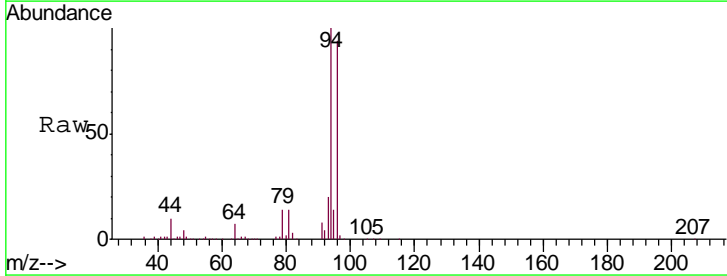
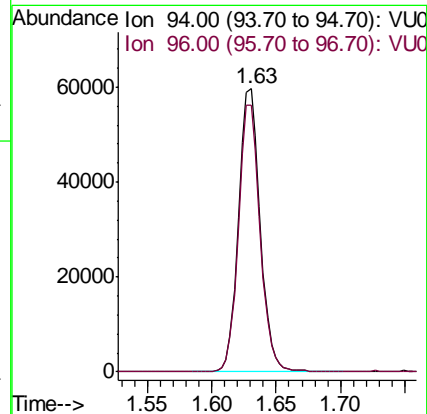
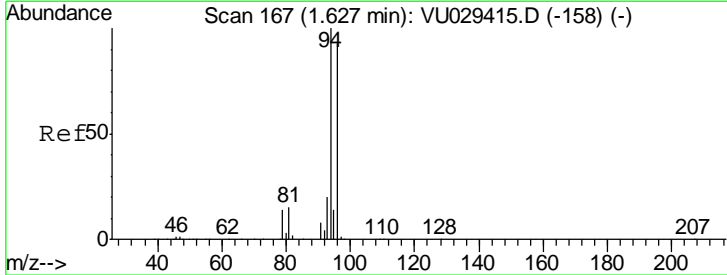
Instrument :
 MSVOA_U
ClientSampled :
 VICV50

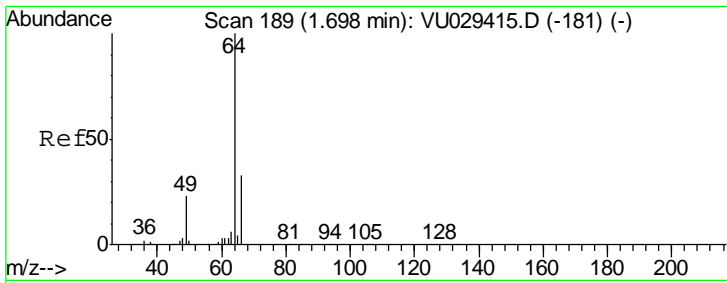
Tgt Ion: 62 Resp: 101821
 Ion Ratio Lower Upper
 62 100
 64 34.1 23.5 43.7



#6
 Bromomethane
 Concen: 5.859 ug/L
 RT: 1.63 min Scan# 168
 Delta R.T. 0.00 min
 Lab File: VU029418.D
 Acq: 12 Feb 2019 14:15

Tgt Ion: 94 Resp: 69581
 Ion Ratio Lower Upper
 94 100
 96 94.2 65.2 121.0

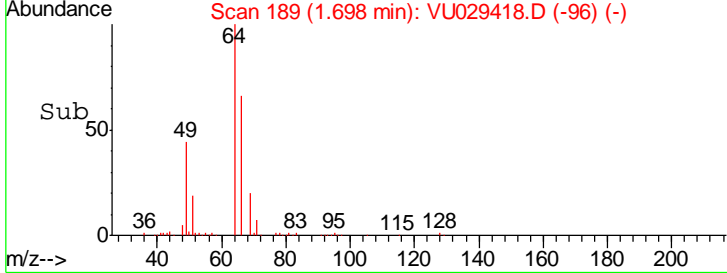
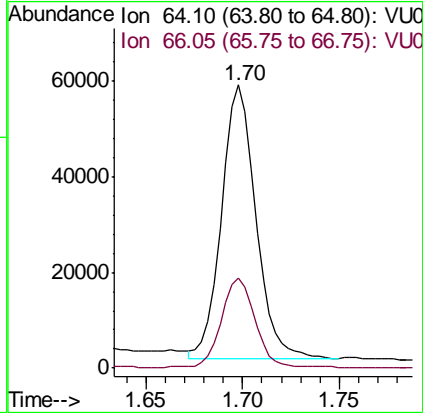
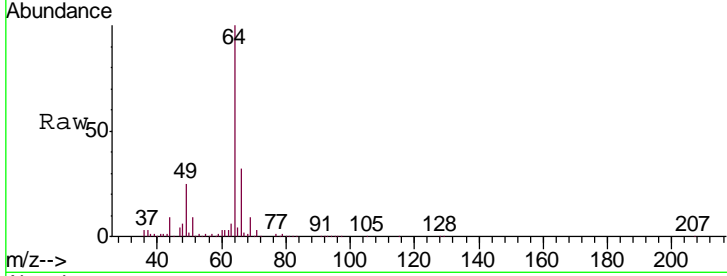




#8
 Chloroethane
 Concen: 5.286 ug/L
 RT: 1.70 min Scan# 189
 Delta R.T. -0.00 min
 Lab File: VU029418.D
 Acq: 12 Feb 2019 14:15

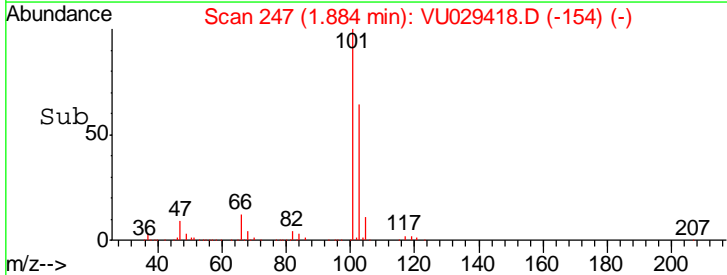
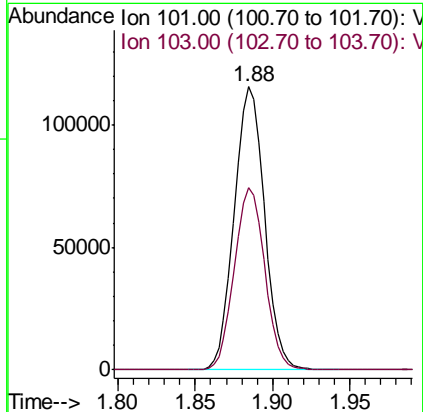
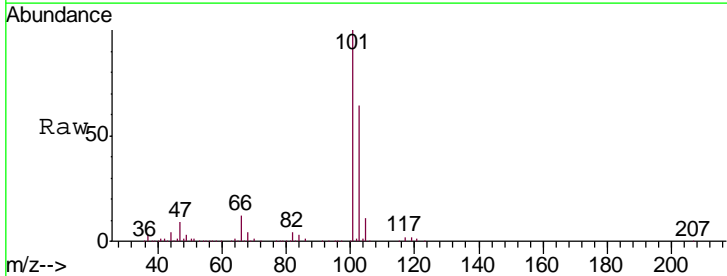
Instrument : MSVOA_U
 ClientSampled : VICV50

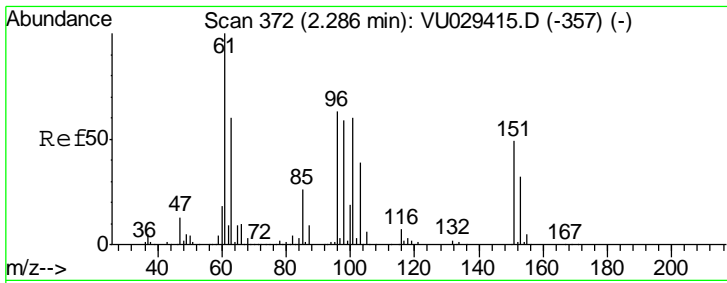
Tgt Ion: 64 Resp: 70074
 Ion Ratio Lower Upper
 64 100
 66 31.8 22.0 40.8



#9
 Trichlorofluoromethane
 Concen: 5.034 ug/L
 RT: 1.88 min Scan# 247
 Delta R.T. -0.00 min
 Lab File: VU029418.D
 Acq: 12 Feb 2019 14:15

Tgt Ion: 101 Resp: 156857
 Ion Ratio Lower Upper
 101 100
 103 64.9 52.1 78.1





#10

1,1,2-Trichloro-1,2,2-trifluoroethane

Concen: 5.133 ug/L

RT: 2.29 min Scan# 372

Delta R.T. -0.00 min

Lab File: VU029418.D

Acq: 12 Feb 2019 14:15

Instrument :

MSVOA_U

ClientSampled :

VICV50

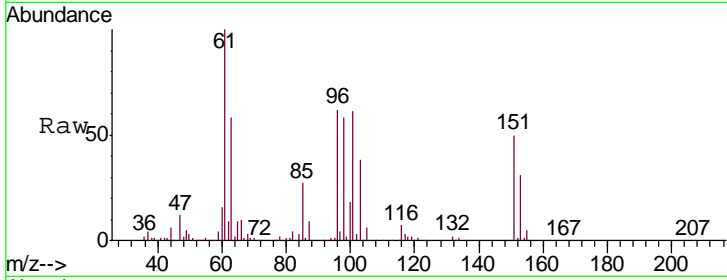
Tgt Ion: 101 Resp: 94279

Ion Ratio Lower Upper

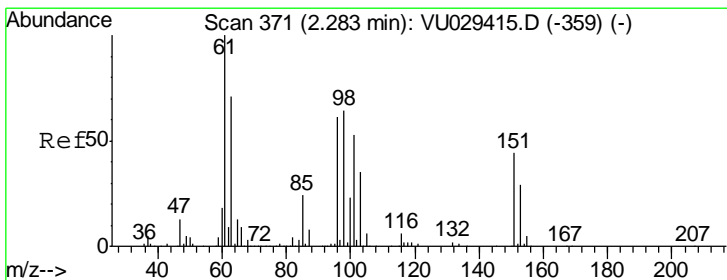
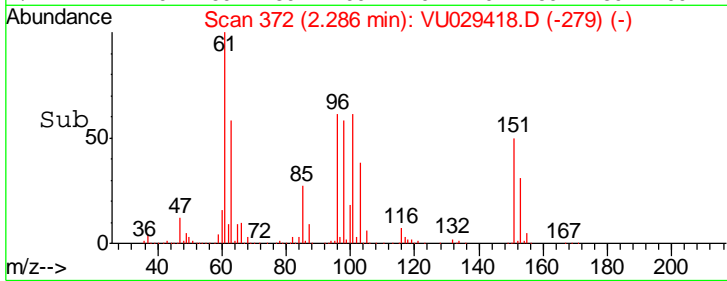
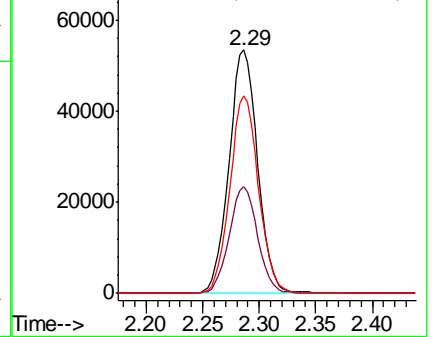
101 100

85 43.6 35.1 52.7

151 81.2 67.0 100.6



Abundance Ion 101.00 (100.70 to 101.70): V
Ion 85.00 (84.70 to 85.70): VU
Ion 151.00 (150.70 to 151.70): V



#12

1,1-Dichloroethene

Concen: 4.916 ug/L

RT: 2.28 min Scan# 371

Delta R.T. -0.00 min

Lab File: VU029418.D

Acq: 12 Feb 2019 14:15

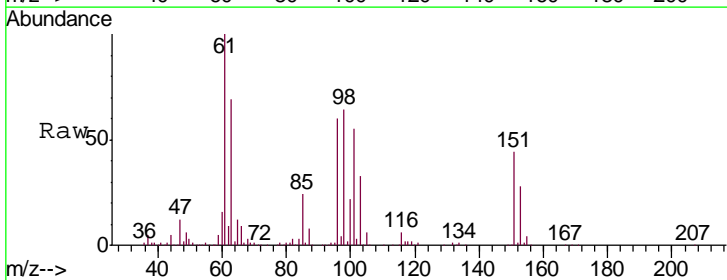
Tgt Ion: 96 Resp: 85523

Ion Ratio Lower Upper

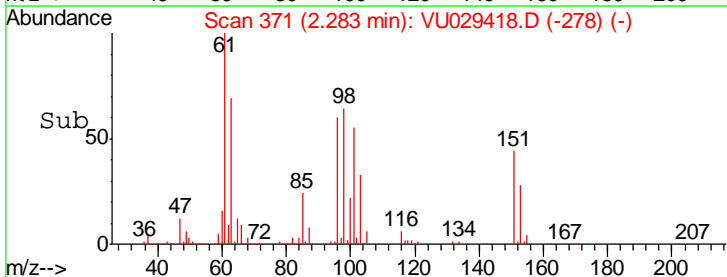
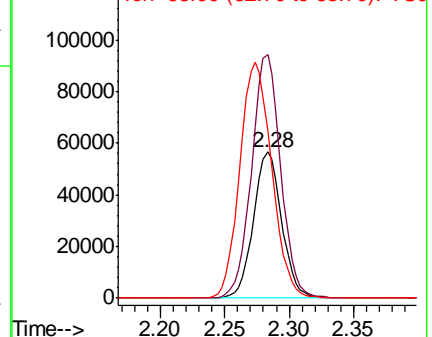
96 100

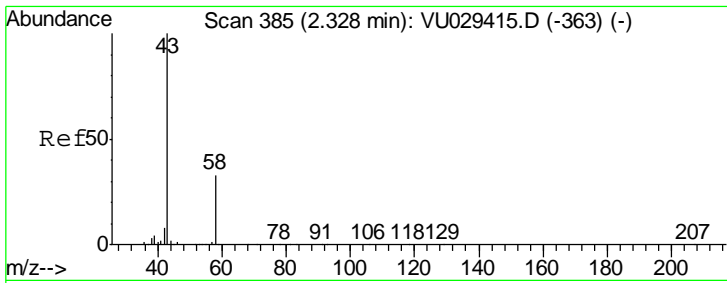
61 167.0 115.1 213.7

63 114.5 83.5 155.1



Abundance Ion 96.00 (95.70 to 96.70): VU
Ion 61.05 (60.75 to 61.75): VU
Ion 63.00 (62.70 to 63.70): VU

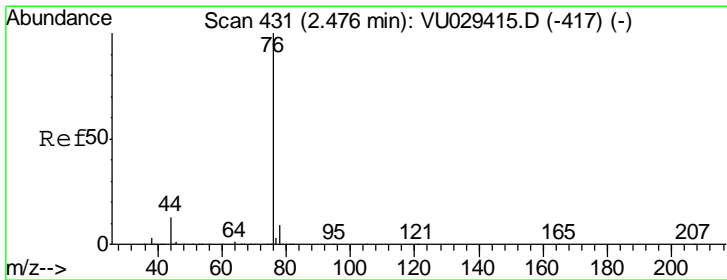
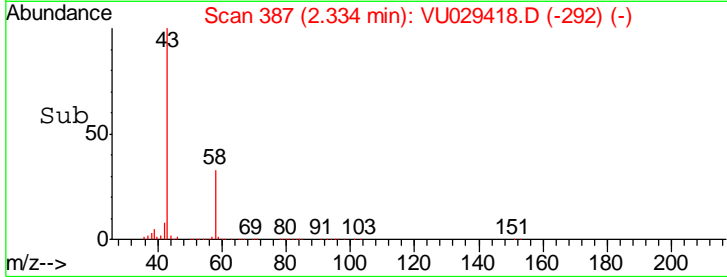
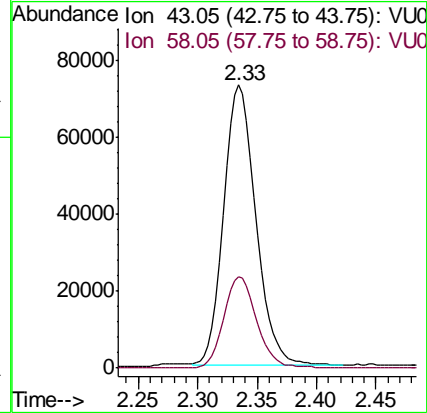
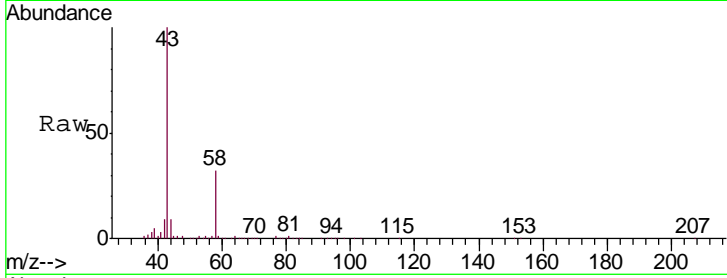




#13
 Acetone
 Concen: 50.804 ug/L
 RT: 2.33 min Scan# 387
 Delta R.T. 0.01 min
 Lab File: VU029418.D
 Acq: 12 Feb 2019 14:15

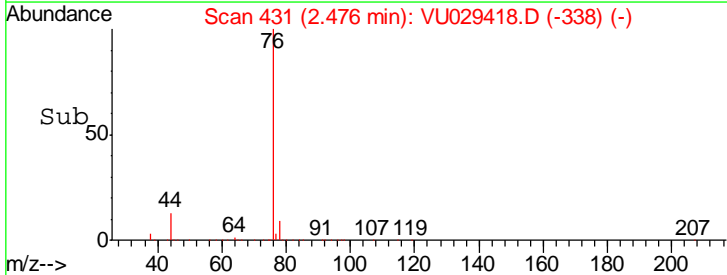
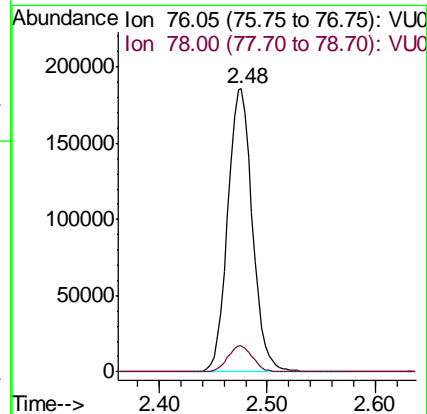
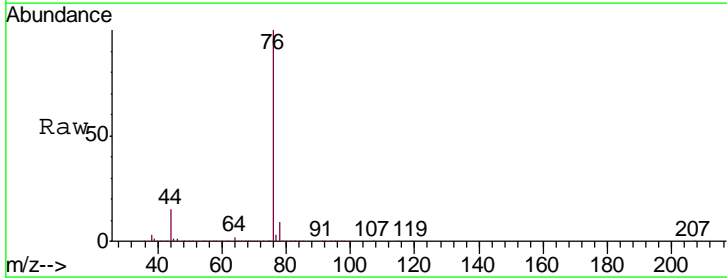
Instrument :
 MSVOA_U
 ClientSampled :
 VICV50

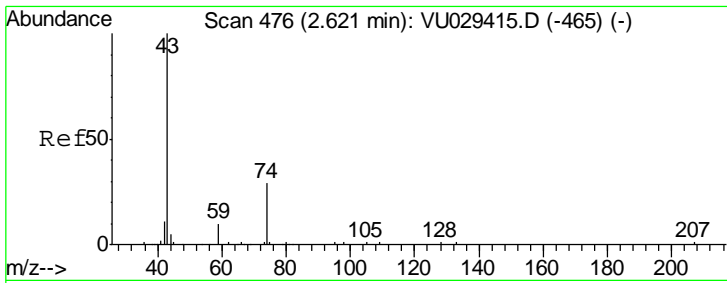
Tgt Ion	Resp	Lower	Upper
43	136291		
58	33.0	0.0	65.0



#14
 Carbon disulfide
 Concen: 5.161 ug/L
 RT: 2.48 min Scan# 431
 Delta R.T. -0.00 min
 Lab File: VU029418.D
 Acq: 12 Feb 2019 14:15

Tgt Ion	Resp	Lower	Upper
76	295839		
78	9.2	7.5	11.3

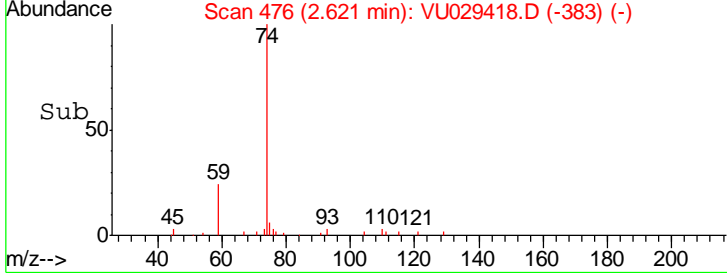
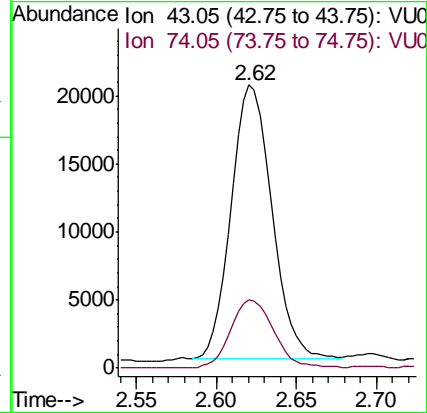
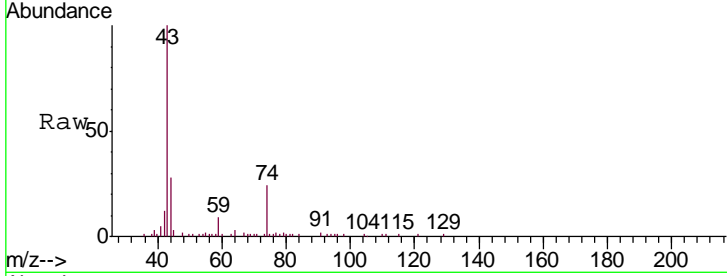




#15
 Methyl Acetate
 Concen: 5.063 ug/L
 RT: 2.62 min Scan# 476
 Delta R.T. -0.00 min
 Lab File: VU029418.D
 Acq: 12 Feb 2019 14:15

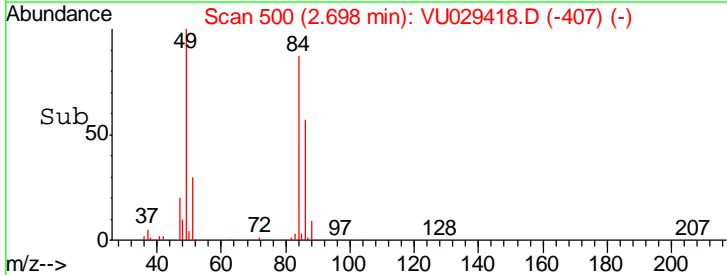
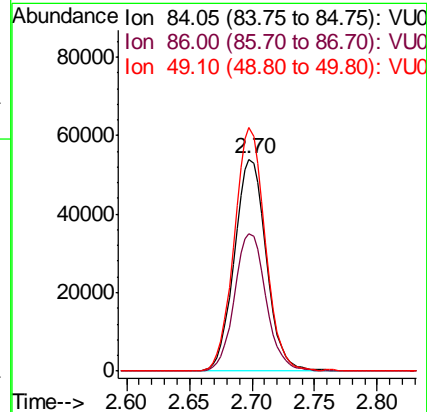
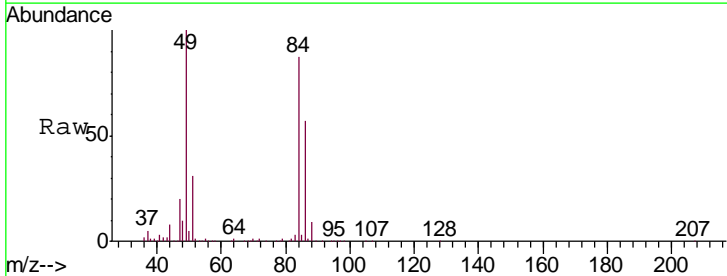
Instrument :
 MSVOA_U
 ClientSampled :
 VICV50

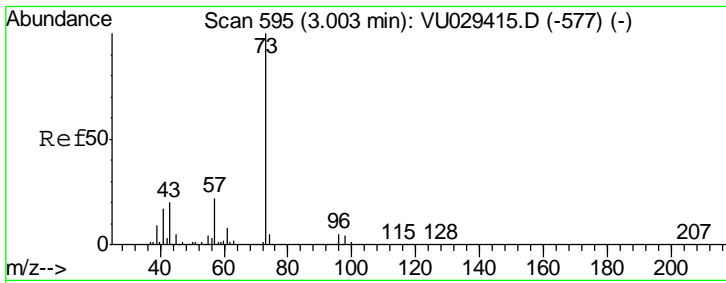
Tgt Ion	Resp	Lower	Upper
43	34794		
74	26.5	22.3	33.5



#16
 Methylene chloride
 Concen: 4.883 ug/L
 RT: 2.70 min Scan# 500
 Delta R.T. -0.00 min
 Lab File: VU029418.D
 Acq: 12 Feb 2019 14:15

Tgt Ion	Resp	Lower	Upper
84	95460		
86	65.1	45.1	83.9
49	114.8	81.8	151.8

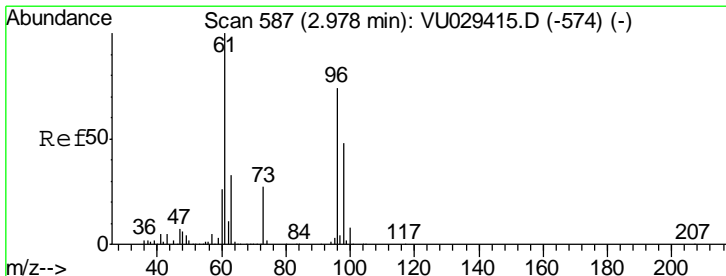
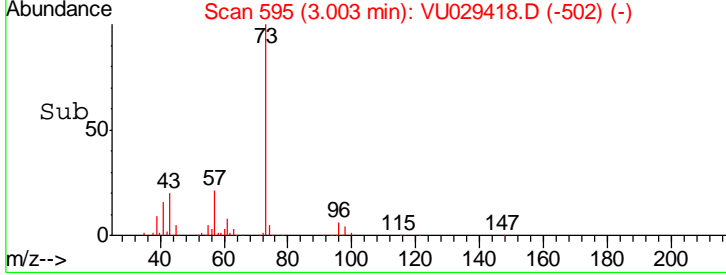
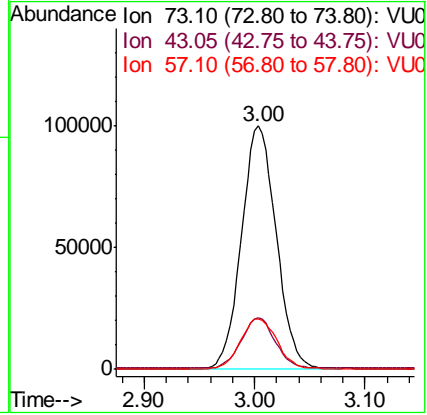
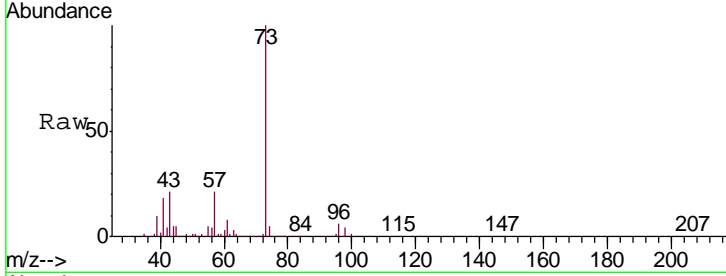




#17
 Methyl tert-butyl Ether
 Concen: 5.019 ug/L
 RT: 3.00 min Scan# 595
 Delta R.T. -0.00 min
 Lab File: VU029418.D
 Acq: 12 Feb 2019 14:15

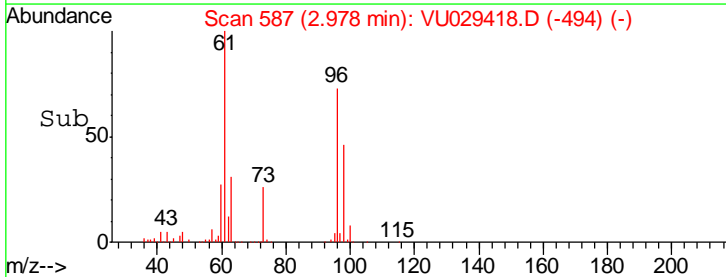
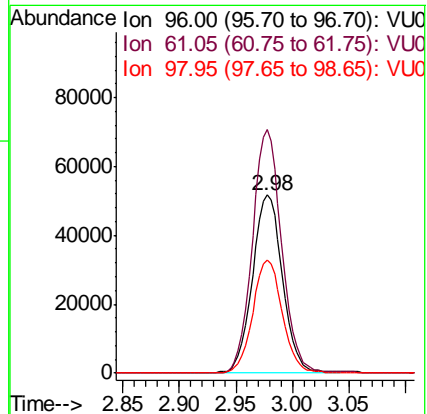
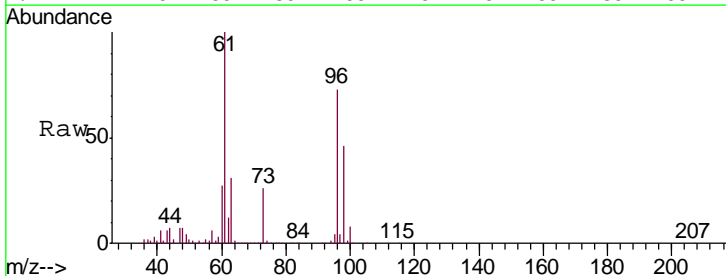
Instrument :
 MSVOA_U
ClientSampled :
 VICV50

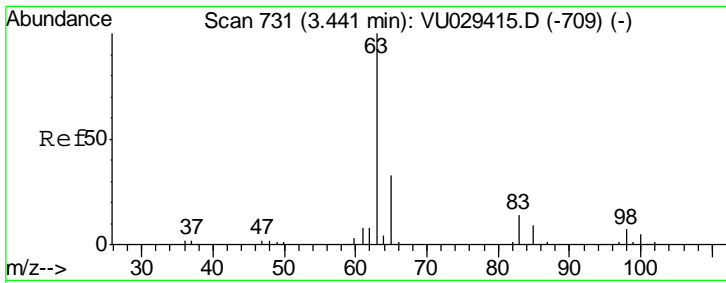
Tgt Ion	Resp	Lower	Upper
73	218637		
43	19.9	16.0	24.0
57	21.4	16.9	25.3



#18
 trans-1,2-Dichloroethene
 Concen: 5.166 ug/L
 RT: 2.98 min Scan# 587
 Delta R.T. -0.00 min
 Lab File: VU029418.D
 Acq: 12 Feb 2019 14:15

Tgt Ion	Resp	Lower	Upper
96	95830		
61	136.9	95.4	177.2
98	63.6	45.8	85.2

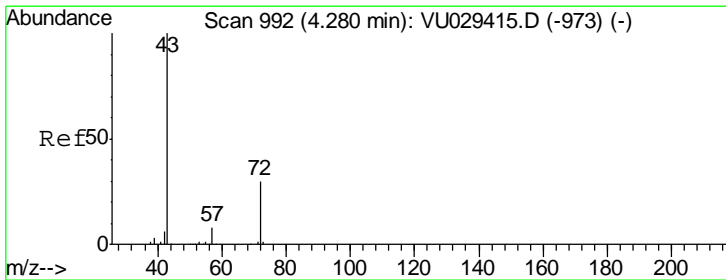
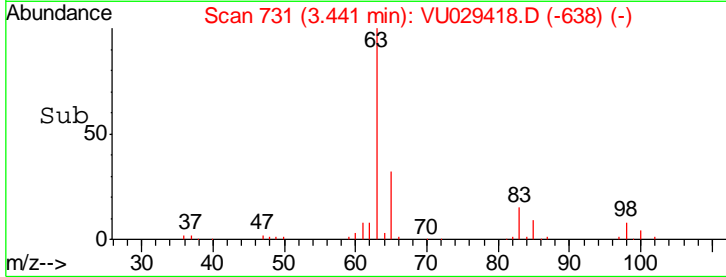
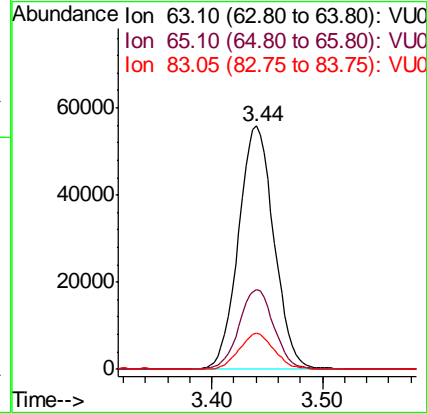
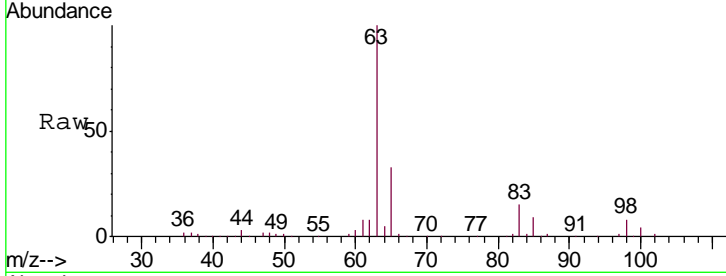




#19
 1,1-Dichloroethane
 Concen: 4.445 ug/L
 RT: 3.44 min Scan# 731
 Delta R.T. -0.00 min
 Lab File: VU029418.D
 Acq: 12 Feb 2019 14:15

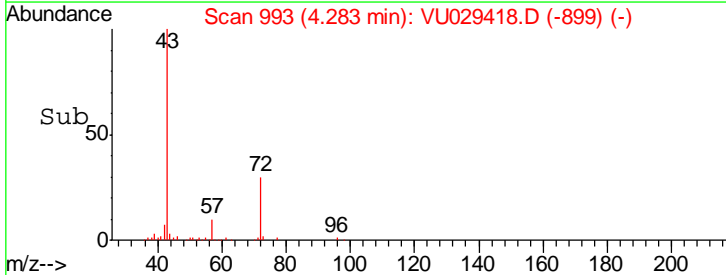
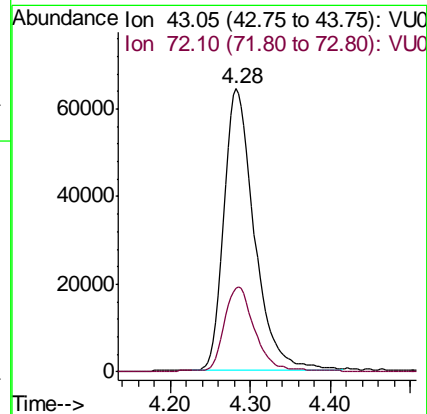
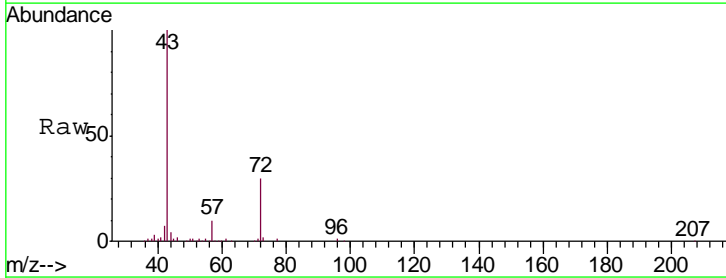
Instrument :
 MSVOA_U
 ClientSampled :
 VICV50

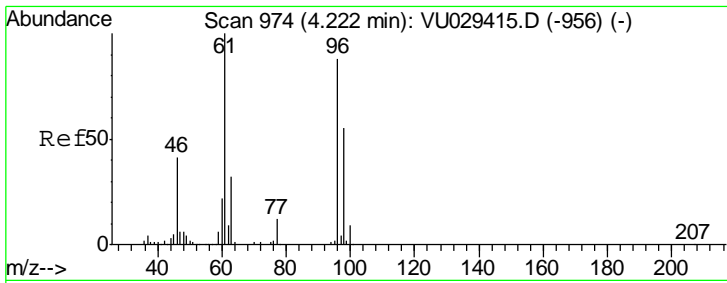
Tgt Ion	Resp	Lower	Upper
63	124211		
65	32.9	23.5	43.7
83	14.7	10.3	19.1



#21
 2-Butanone
 Concen: 50.689 ug/L
 RT: 4.28 min Scan# 993
 Delta R.T. 0.00 min
 Lab File: VU029418.D
 Acq: 12 Feb 2019 14:15

Tgt Ion	Resp	Lower	Upper
43	168029		
72	29.5	14.7	44.1

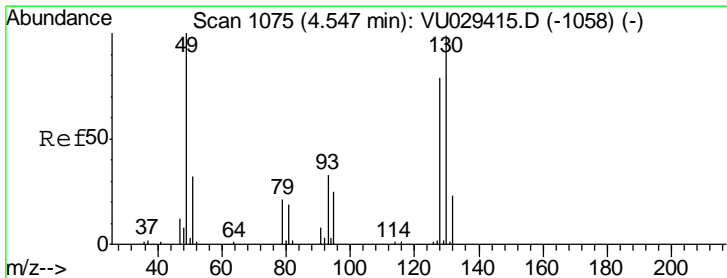
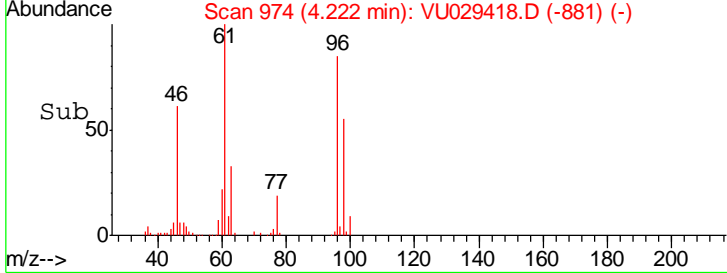
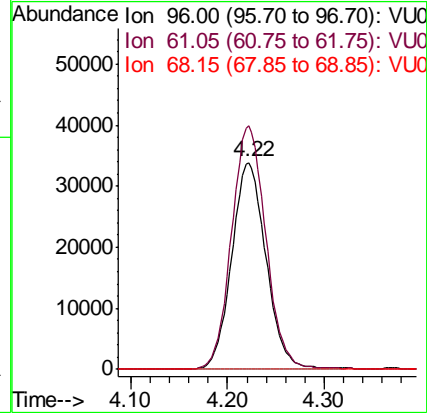
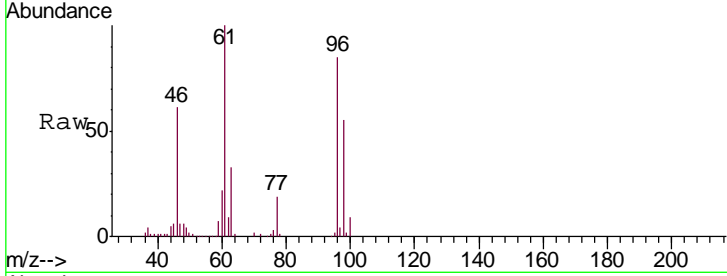




#22
 cis-1,2-Dichloroethene
 Concen: 4.893 ug/L
 RT: 4.22 min Scan# 974
 Delta R.T. -0.00 min
 Lab File: VU029418.D
 Acq: 12 Feb 2019 14:15

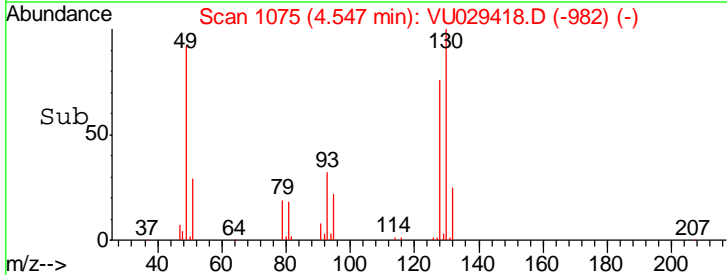
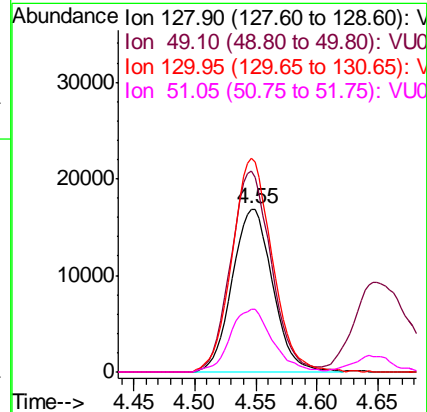
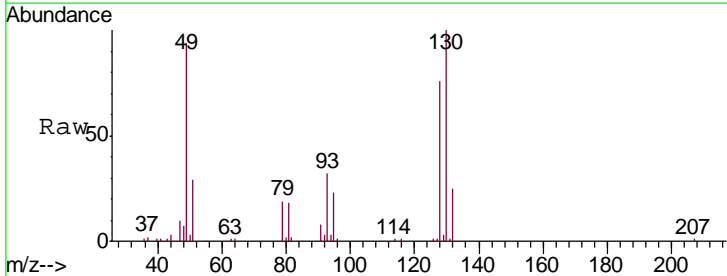
Instrument :
 MSVOA_U
 ClientSampled :
 VICV50

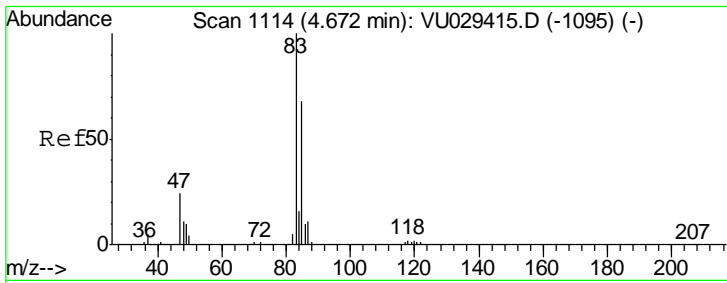
Tgt Ion	Resp	Lower	Upper
96	83485		
61	117.6	79.9	148.5
68	0.0	0.0	0.0



#23
 Bromochloromethane
 Concen: 5.044 ug/L
 RT: 4.55 min Scan# 1075
 Delta R.T. -0.00 min
 Lab File: VU029418.D
 Acq: 12 Feb 2019 14:15

Tgt Ion	Resp	Lower	Upper
128	38856		
49	123.2	89.0	165.4
130	130.9	88.0	163.4
51	38.4	32.1	48.1

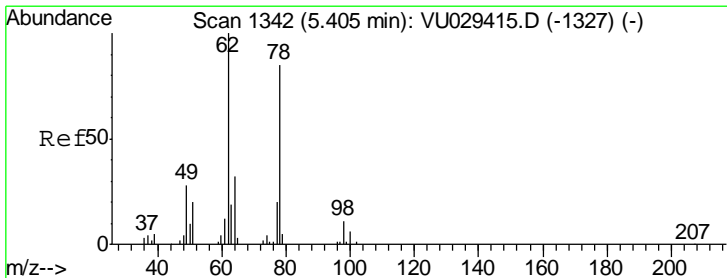
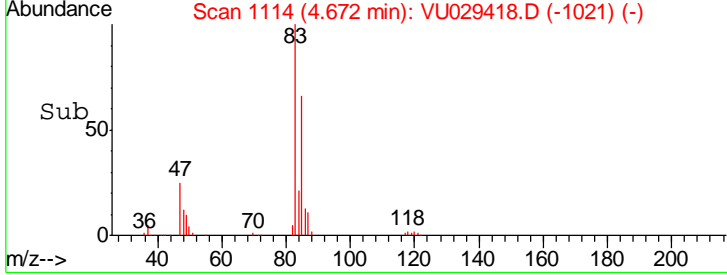
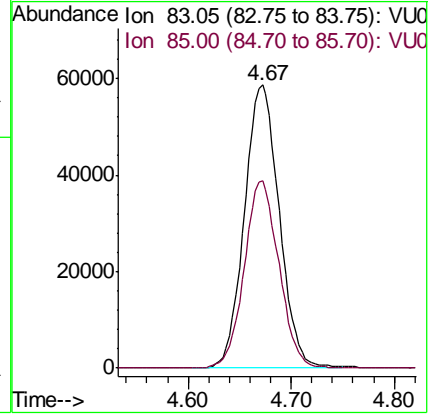
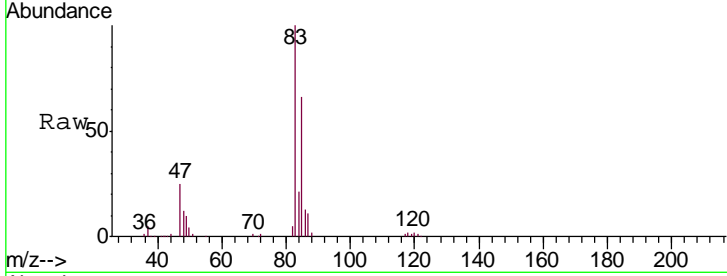




#25
 Chloroform
 Concen: 4.921 ug/L
 RT: 4.67 min Scan# 1114
 Delta R.T. -0.00 min
 Lab File: VU029418.D
 Acq: 12 Feb 2019 14:15

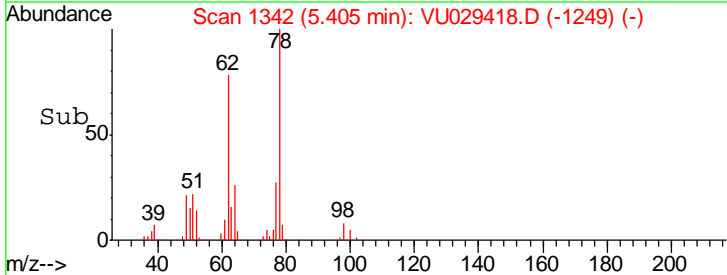
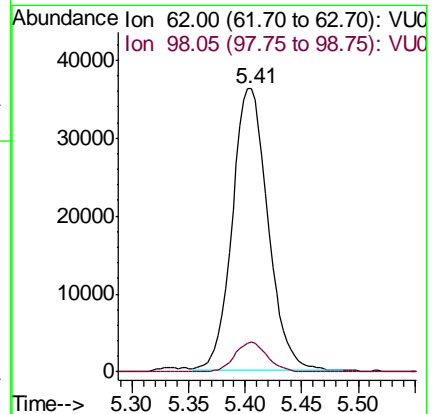
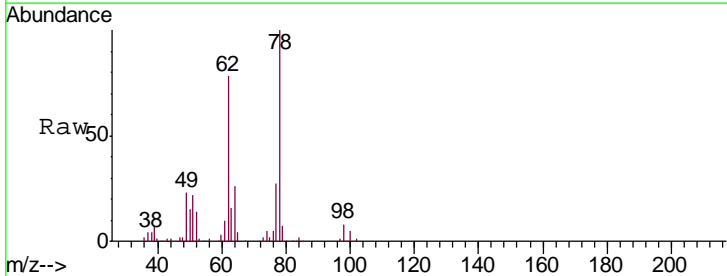
Instrument :
 MSVOA_U
 ClientSampled :
 VICV50

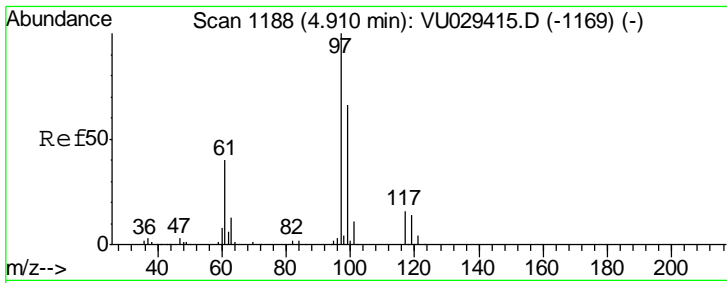
Tgt Ion: 83 Resp: 137589
 Ion Ratio Lower Upper
 83 100
 85 66.0 47.8 88.8



#27
 1,2-Dichloroethane
 Concen: 4.914 ug/L
 RT: 5.41 min Scan# 1342
 Delta R.T. -0.00 min
 Lab File: VU029418.D
 Acq: 12 Feb 2019 14:15

Tgt Ion: 62 Resp: 79513
 Ion Ratio Lower Upper
 62 100
 98 10.5 8.4 12.6

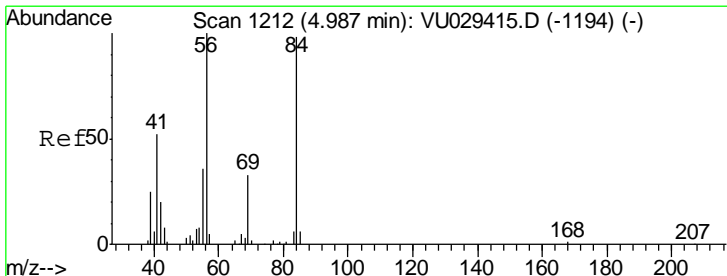
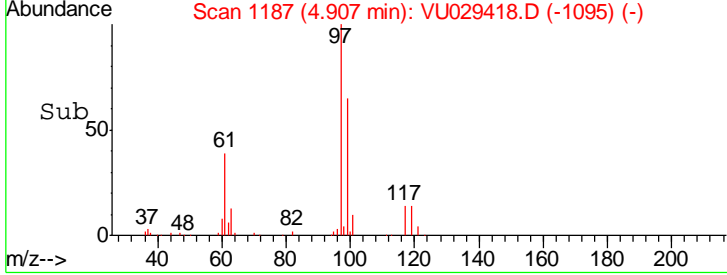
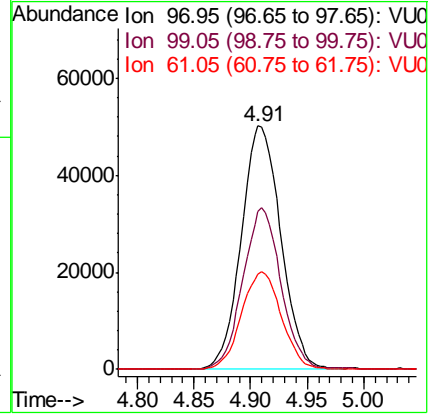
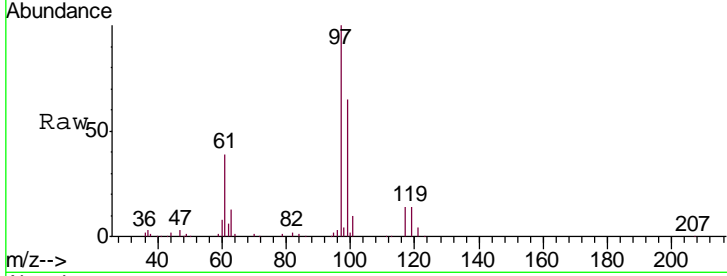




#29
 1,1,1-Trichloroethane
 Concen: 4.983 ug/L
 RT: 4.91 min Scan# 1187
 Delta R.T. -0.00 min
 Lab File: VU029418.D
 Acq: 12 Feb 2019 14:15

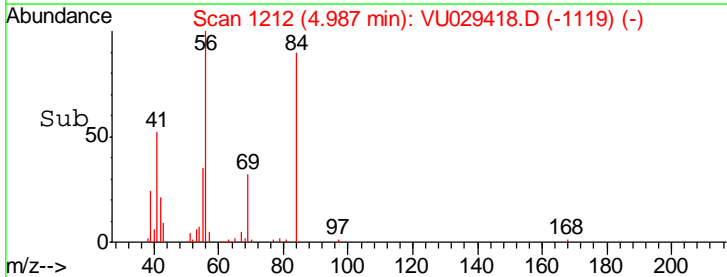
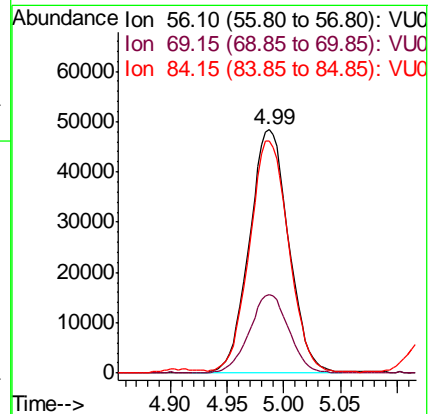
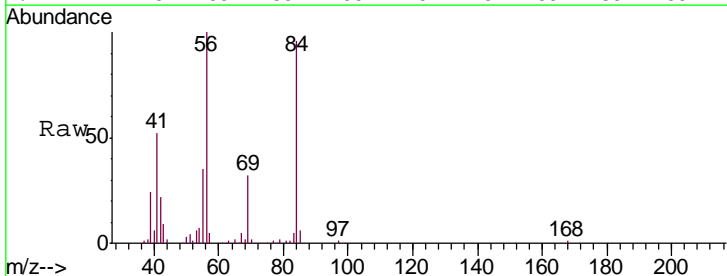
Instrument :
 MSVOA_U
 ClientSampled :
 VICV50

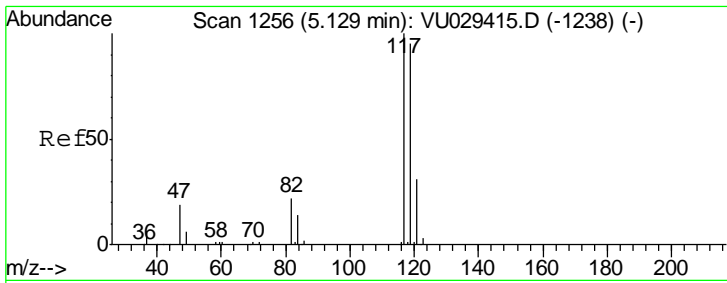
Tgt Ion	Resp	Lower	Upper
97	122302		
99	64.0	52.2	78.2
61	40.4	32.0	48.0



#30
 Cyclohexane
 Concen: 4.980 ug/L
 RT: 4.99 min Scan# 1212
 Delta R.T. -0.00 min
 Lab File: VU029418.D
 Acq: 12 Feb 2019 14:15

Tgt Ion	Resp	Lower	Upper
56	117127		
69	32.3	25.8	38.6
84	94.5	75.0	112.6

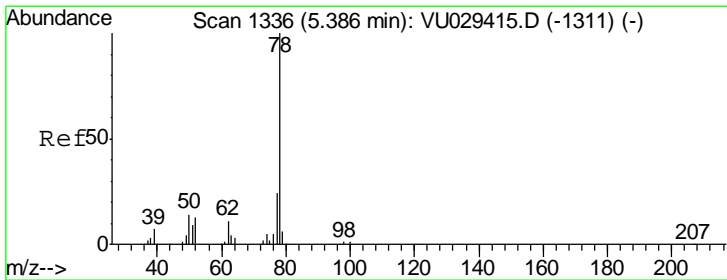
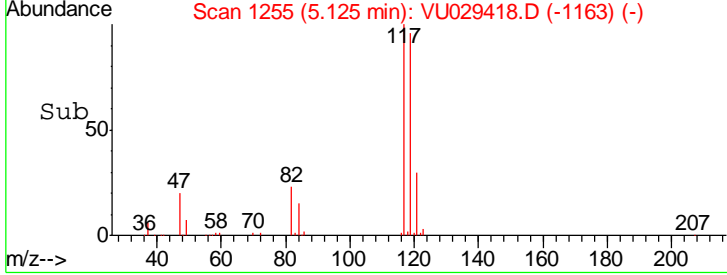
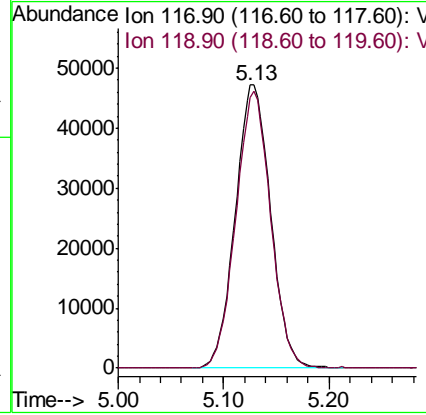
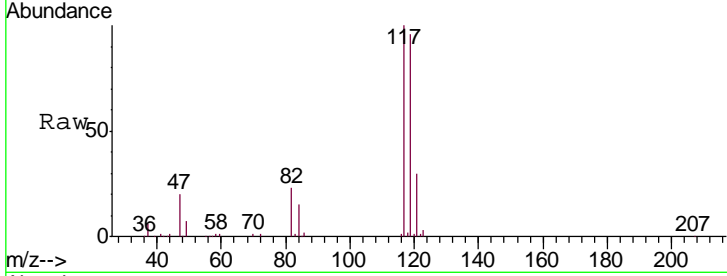




#31
 Carbon tetrachloride
 Concen: 4.935 ug/L
 RT: 5.13 min Scan# 1255
 Delta R.T. -0.00 min
 Lab File: VU029418.D
 Acq: 12 Feb 2019 14:15

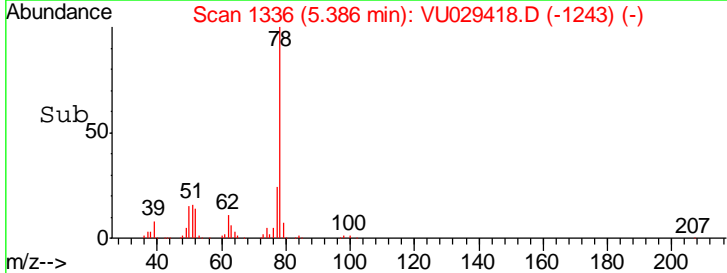
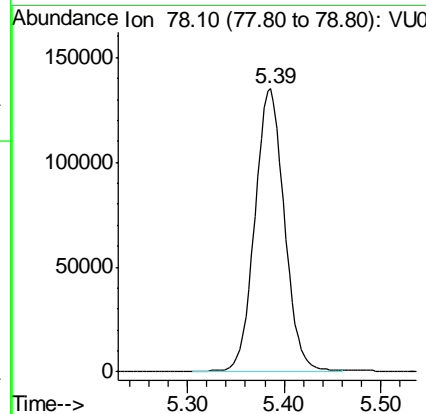
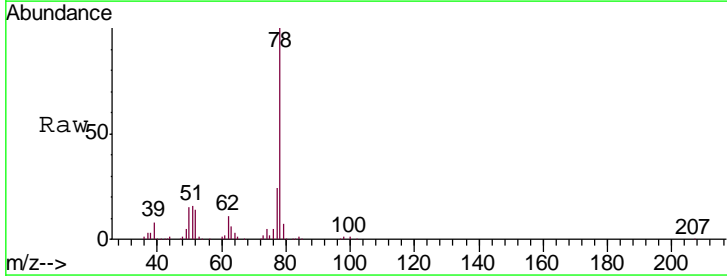
Instrument : MSVOA_U
 ClientSampled : VICV50

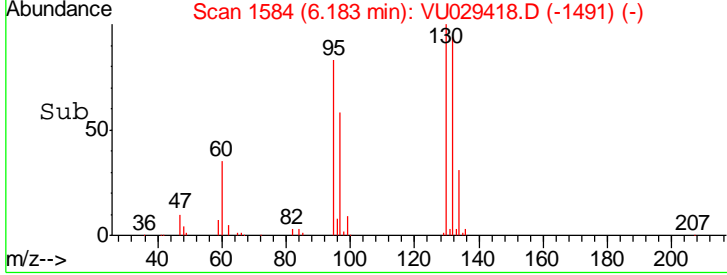
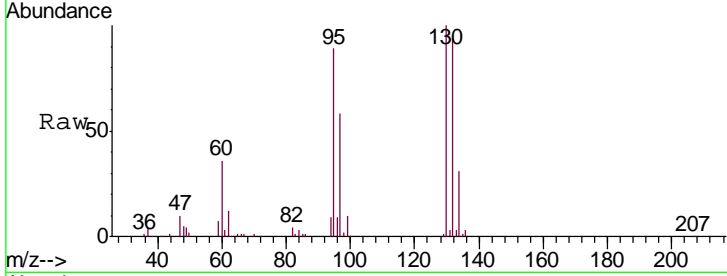
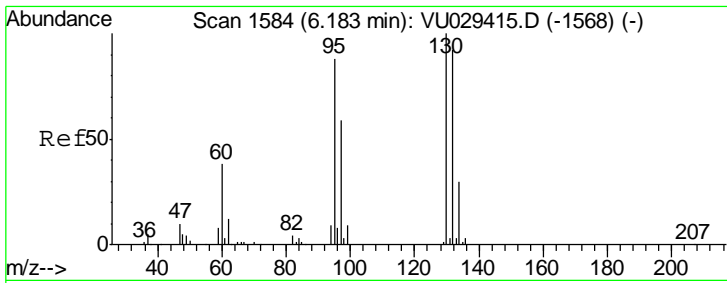
Tgt Ion: 117 Resp: 109457
 Ion Ratio Lower Upper
 117 100
 119 96.3 78.1 117.1



#33
 Benzene
 Concen: 4.923 ug/L
 RT: 5.39 min Scan# 1336
 Delta R.T. -0.00 min
 Lab File: VU029418.D
 Acq: 12 Feb 2019 14:15

Tgt Ion: 78 Resp: 287576

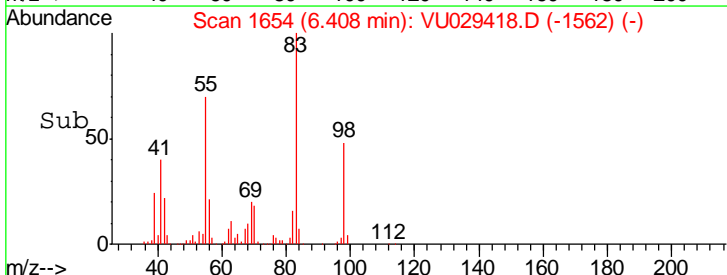
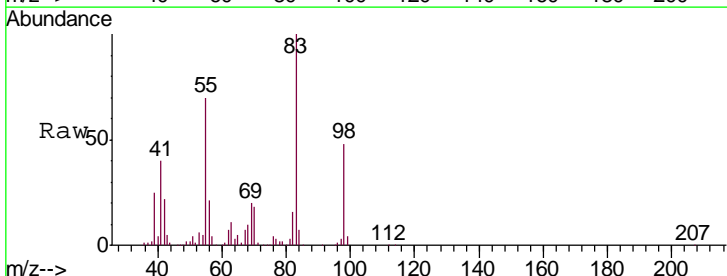
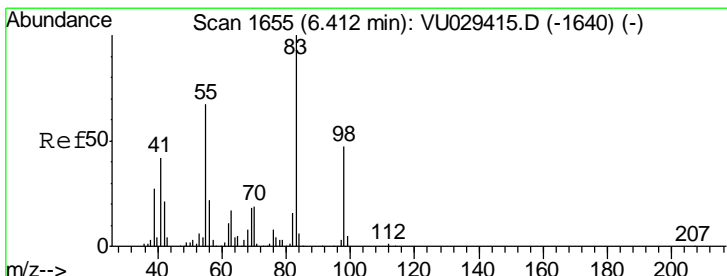
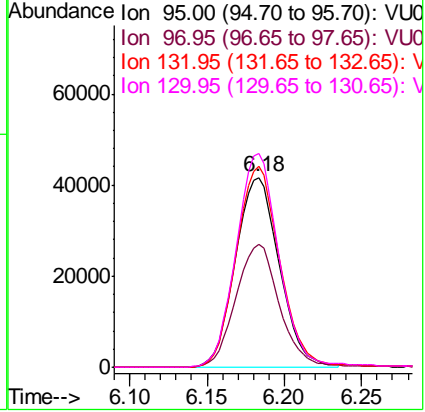




#34
 Trichloroethene
 Concen: 5.009 ug/L
 RT: 6.18 min Scan# 1584
 Delta R.T. -0.00 min
 Lab File: VU029418.D
 Acq: 12 Feb 2019 14:15

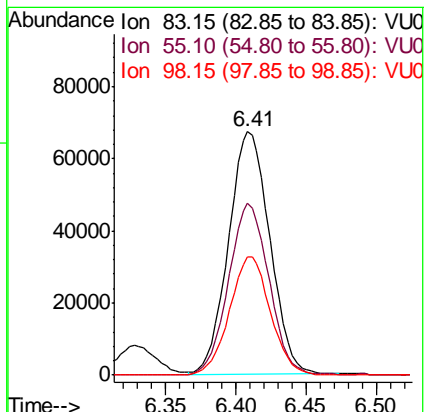
Instrument :
 MSVOA_U
 ClientSampled :
 VICV50

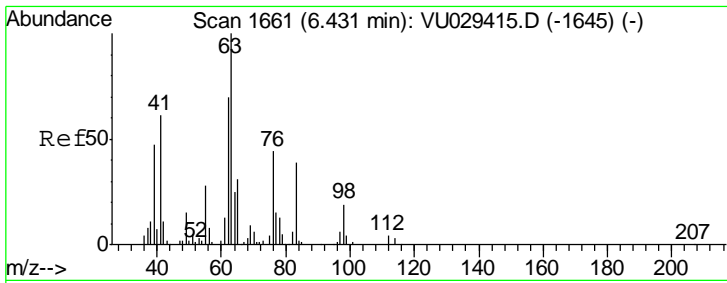
Tgt Ion	Resp	Lower	Upper
95	82259		
95	100		
97	65.0	46.3	86.1
132	105.6	72.9	135.3
130	112.5	79.2	147.0



#35
 Methylcyclohexane
 Concen: 4.988 ug/L
 RT: 6.41 min Scan# 1654
 Delta R.T. -0.00 min
 Lab File: VU029418.D
 Acq: 12 Feb 2019 14:15

Tgt Ion	Resp	Lower	Upper
83	137807		
83	100		
55	69.1	55.9	83.9
98	48.1	38.6	57.8

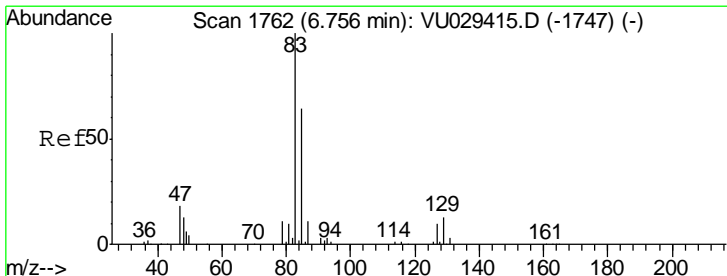
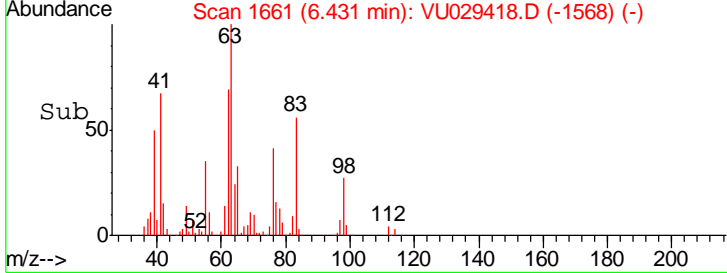
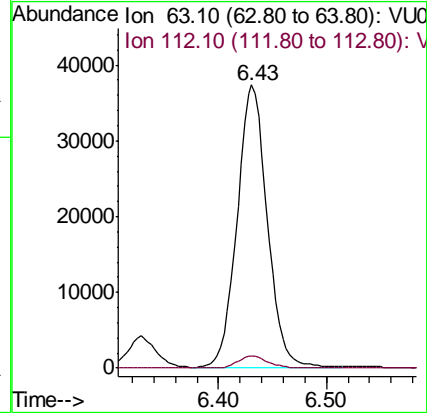
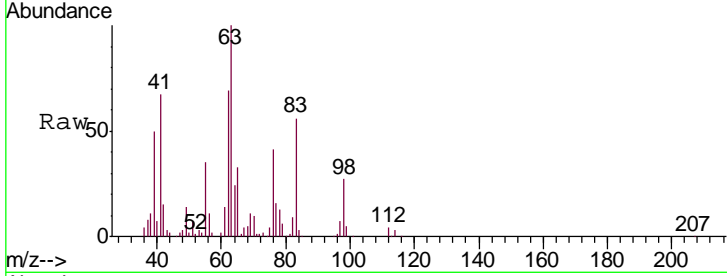




#37
 1,2-Dichloropropane
 Concen: 4.955 ug/L
 RT: 6.43 min Scan# 1661
 Delta R.T. -0.00 min
 Lab File: VU029418.D
 Acq: 12 Feb 2019 14:15

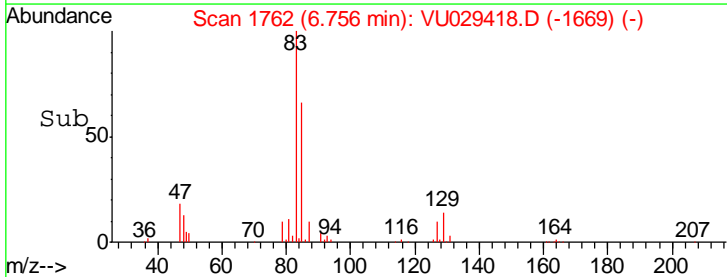
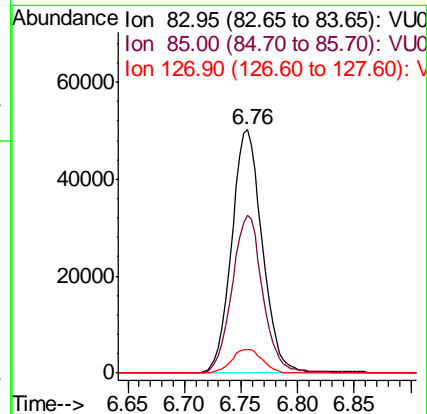
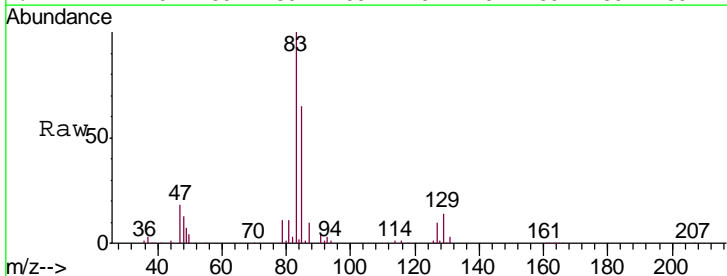
Instrument :
 MSVOA_U
 ClientSampled :
 VICV50

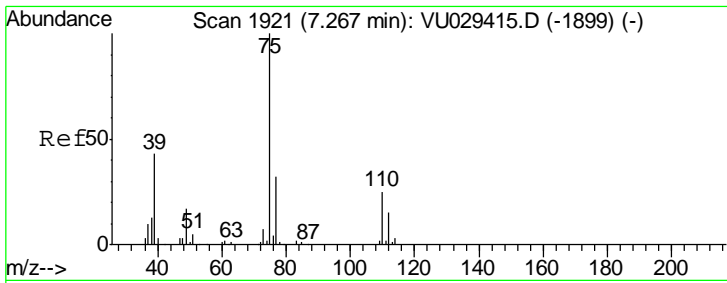
Tgt Ion	Resp	Lower	Upper
63	100		
112	4.2	3.5	5.3



#38
 Bromodichloromethane
 Concen: 4.899 ug/L
 RT: 6.76 min Scan# 1762
 Delta R.T. -0.00 min
 Lab File: VU029418.D
 Acq: 12 Feb 2019 14:15

Tgt Ion	Resp	Lower	Upper
83	100		
85	64.7	45.1	83.7
127	9.7	7.8	11.8

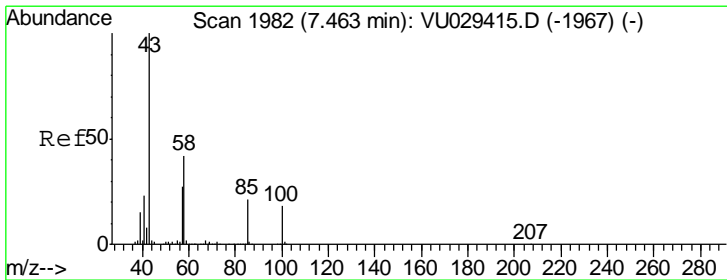
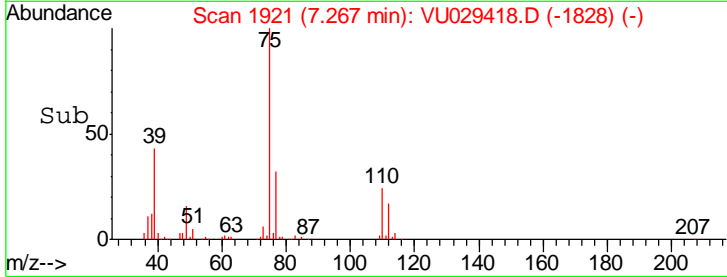
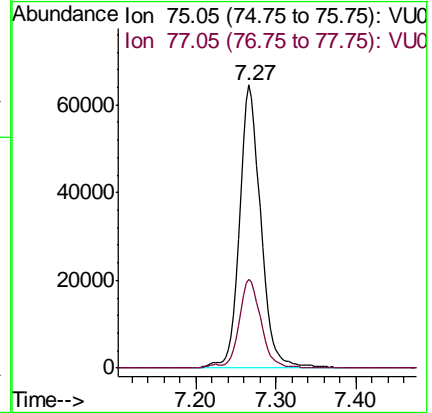
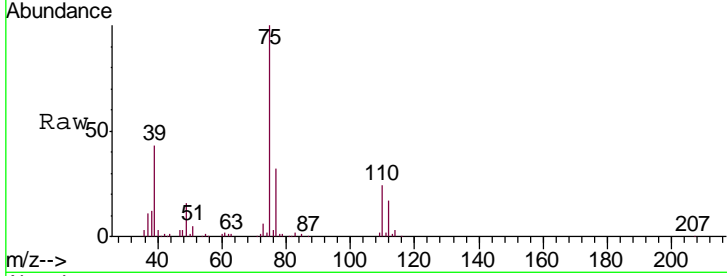




#39
 cis-1,3-Dichloropropene
 Concen: 5.054 ug/L
 RT: 7.27 min Scan# 1921
 Delta R.T. -0.00 min
 Lab File: VU029418.D
 Acq: 12 Feb 2019 14:15

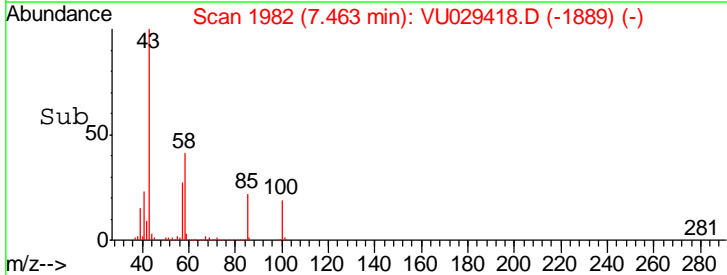
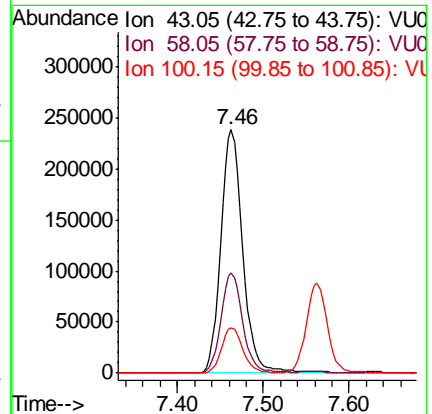
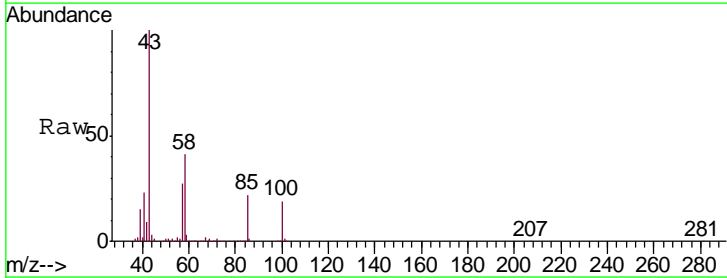
Instrument :
 MSVOA_U
 ClientSampled :
 VICV50

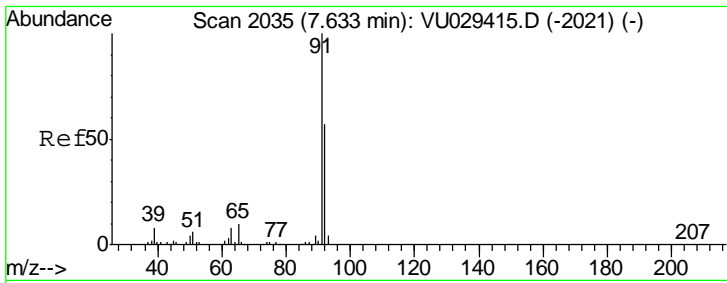
Tgt Ion: 75 Resp: 116380
 Ion Ratio Lower Upper
 75 100
 77 31.5 22.3 41.3



#40
 4-Methyl-2-pentanone
 Concen: 50.334 ug/L
 RT: 7.46 min Scan# 1982
 Delta R.T. -0.00 min
 Lab File: VU029418.D
 Acq: 12 Feb 2019 14:15

Tgt Ion: 43 Resp: 424490
 Ion Ratio Lower Upper
 43 100
 58 40.8 33.4 50.2
 100 18.3 14.4 21.6

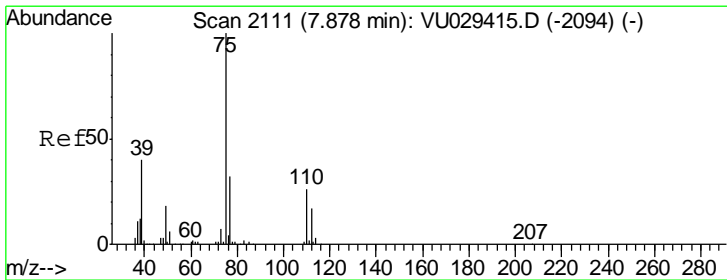
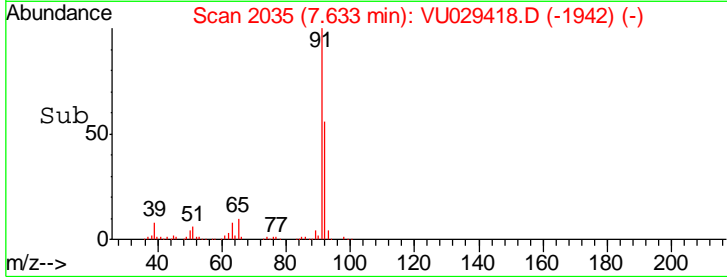
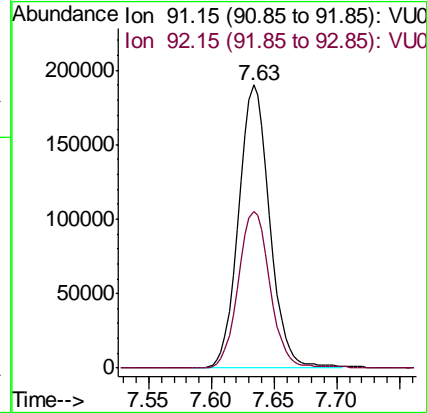
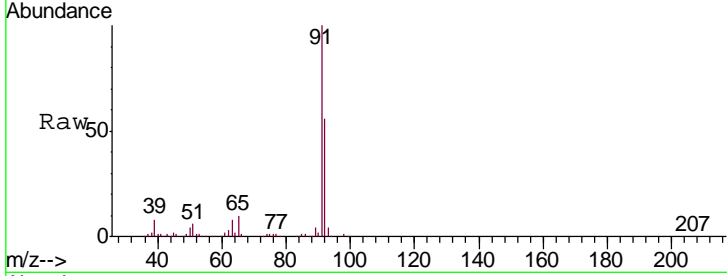




#42
 Toluene
 Concen: 4.998 ug/L
 RT: 7.63 min Scan# 2035
 Delta R.T. -0.00 min
 Lab File: VU029418.D
 Acq: 12 Feb 2019 14:15

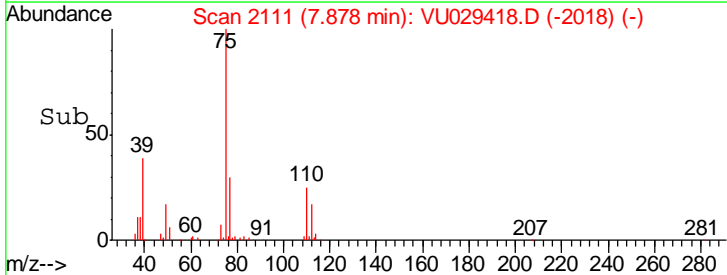
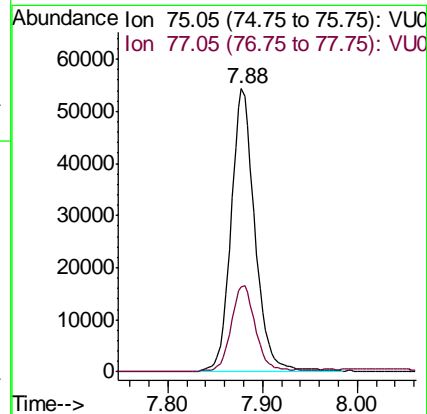
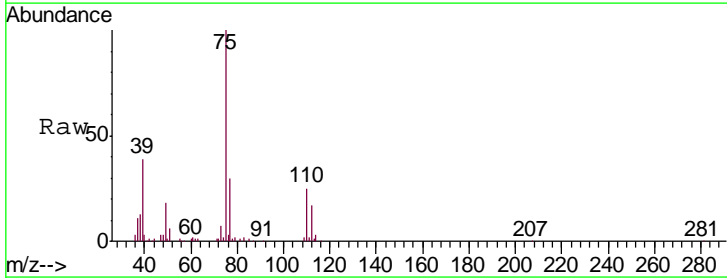
Instrument :
 MSVOA_U
 ClientSampled :
 VICV50

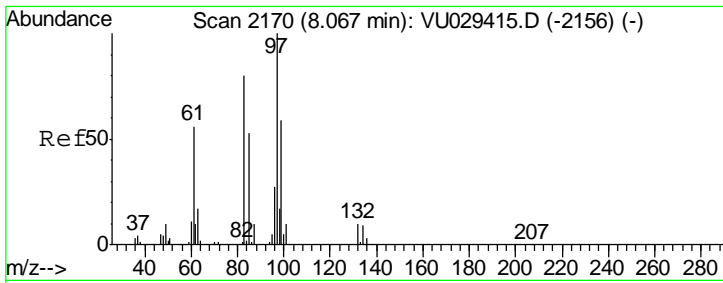
Tgt Ion: 91 Resp: 327693
 Ion Ratio Lower Upper
 91 100
 92 55.5 39.8 73.8



#44
 trans-1,3-Dichloropropene
 Concen: 5.057 ug/L
 RT: 7.88 min Scan# 2111
 Delta R.T. -0.00 min
 Lab File: VU029418.D
 Acq: 12 Feb 2019 14:15

Tgt Ion: 75 Resp: 95619
 Ion Ratio Lower Upper
 75 100
 77 30.2 22.2 41.2

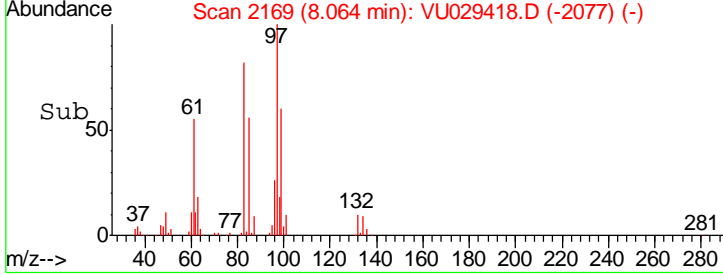
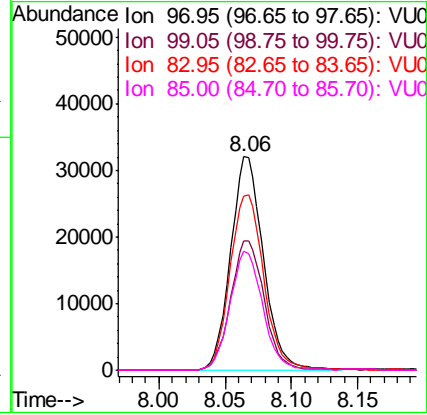
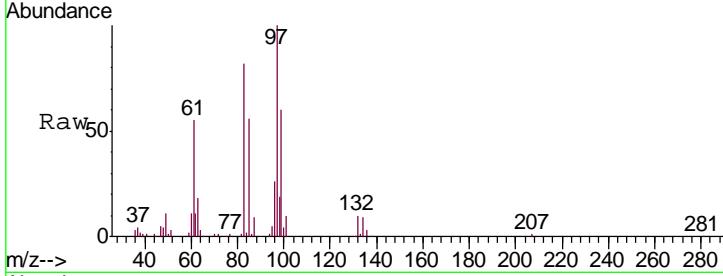




#45
 1,1,2-Trichloroethane
 Concen: 4.934 ug/L
 RT: 8.06 min Scan# 2169
 Delta R.T. -0.00 min
 Lab File: VU029418.D
 Acq: 12 Feb 2019 14:15

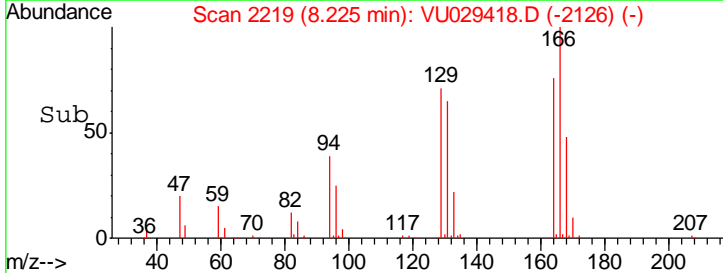
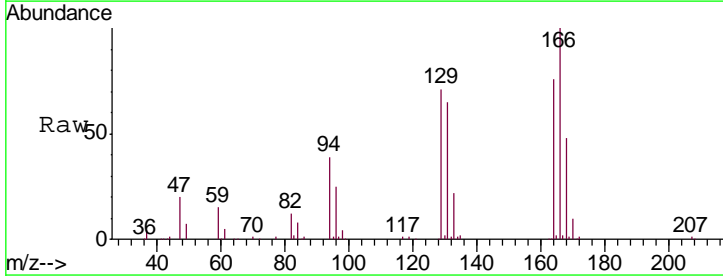
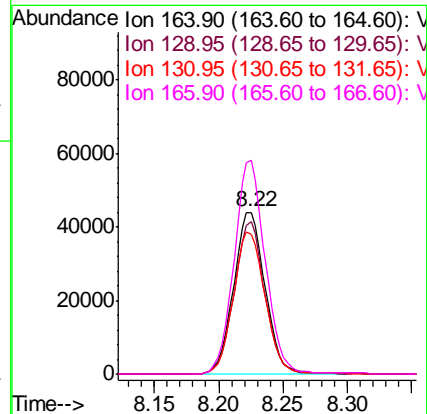
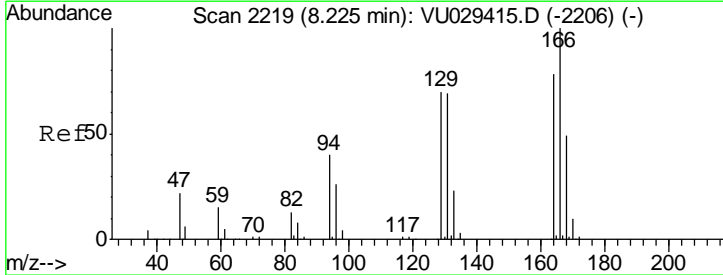
Instrument : MSVOA_U
 ClientSampled : VICV50

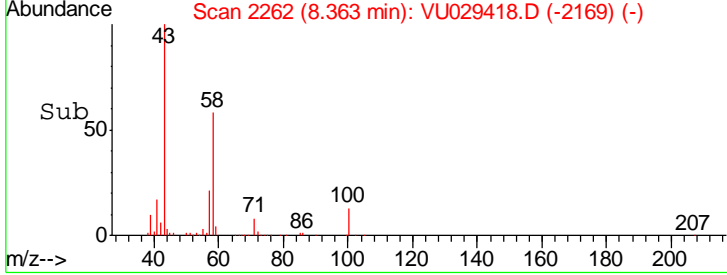
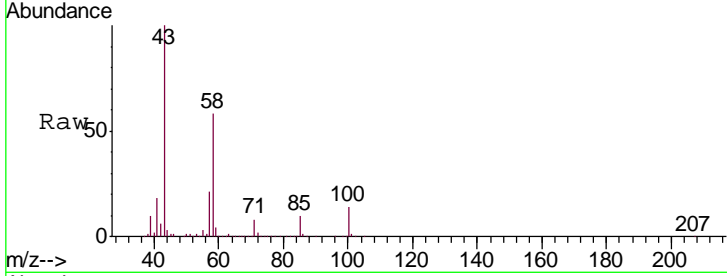
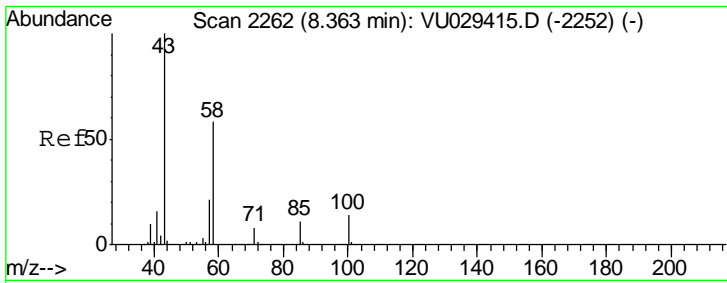
Tgt Ion	Resp	Lower	Upper
97	100		
99	60.5	41.6	77.2
83	81.7	55.8	103.6
85	55.7	37.2	69.0



#47
 Tetrachloroethene
 Concen: 4.950 ug/L
 RT: 8.22 min Scan# 2219
 Delta R.T. -0.00 min
 Lab File: VU029418.D
 Acq: 12 Feb 2019 14:15

Tgt Ion	Resp	Lower	Upper
164	100		
129	94.1	62.9	116.9
131	86.4	62.1	115.3
166	131.9	89.8	166.8

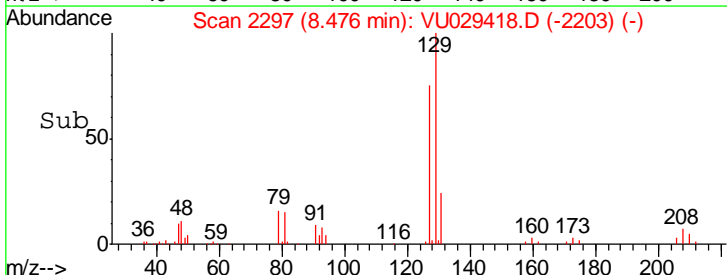
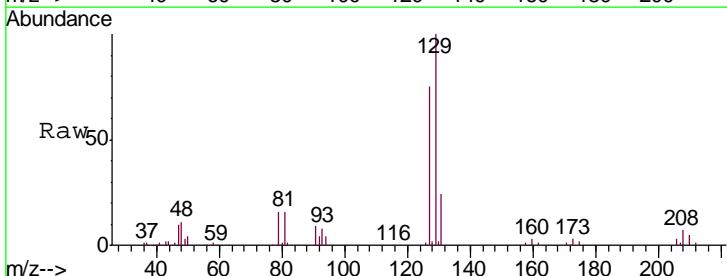
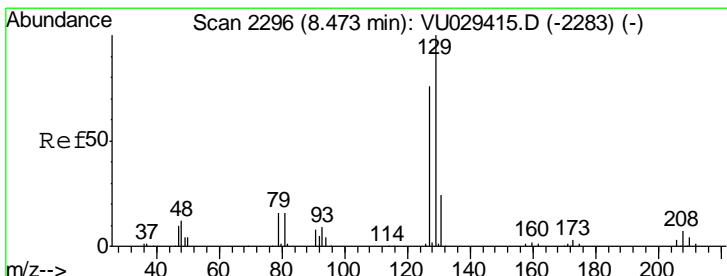
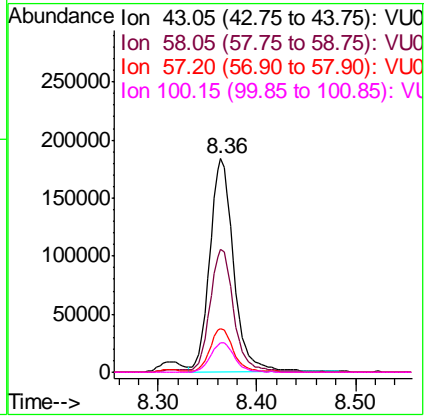




#48
 2-Hexanone
 Concen: 50.197 ug/L
 RT: 8.36 min Scan# 2262
 Delta R.T. -0.00 min
 Lab File: VU029418.D
 Acq: 12 Feb 2019 14:15

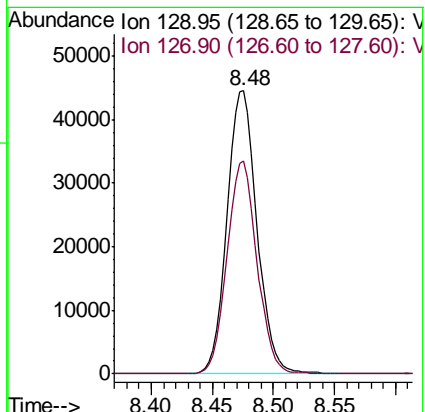
Instrument : MSVOA_U
 ClientSampled : VICV50

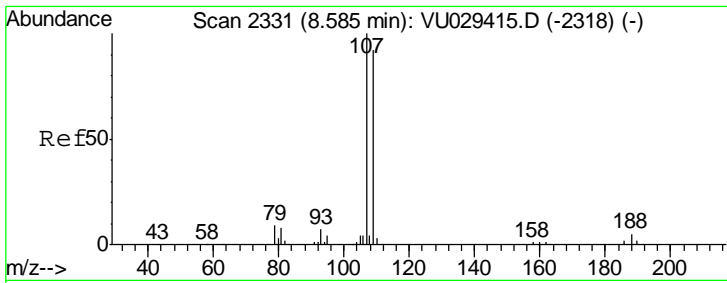
Tgt Ion	Resp	Lower	Upper
43	308540		
58	57.5	45.7	68.5
57	20.2	16.4	24.6
100	14.2	11.1	16.7



#49
 Dibromochloromethane
 Concen: 5.078 ug/L
 RT: 8.48 min Scan# 2297
 Delta R.T. 0.00 min
 Lab File: VU029418.D
 Acq: 12 Feb 2019 14:15

Tgt Ion	Resp	Lower	Upper
129	76703		
127	75.0	53.3	99.1

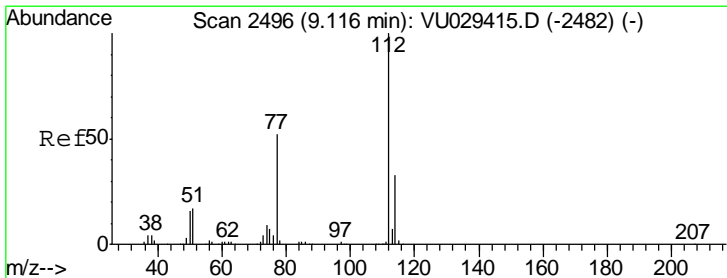
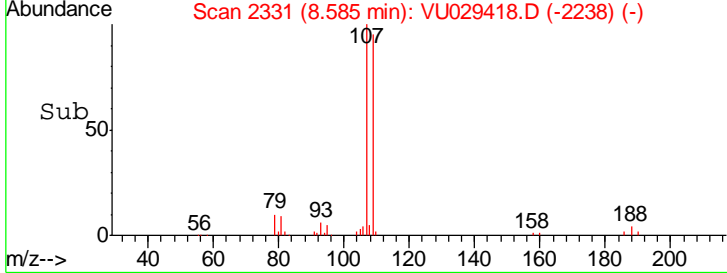
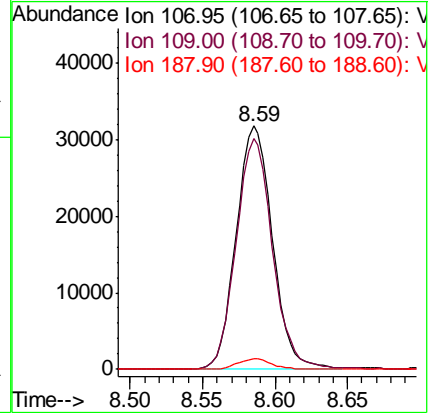
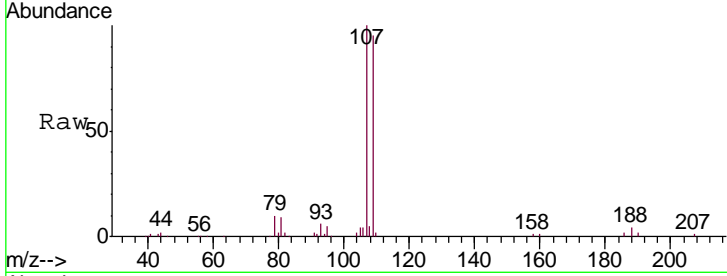




#50
 1,2-Dibromoethane
 Concen: 4.985 ug/L
 RT: 8.59 min Scan# 2331
 Delta R.T. -0.00 min
 Lab File: VU029418.D
 Acq: 12 Feb 2019 14:15

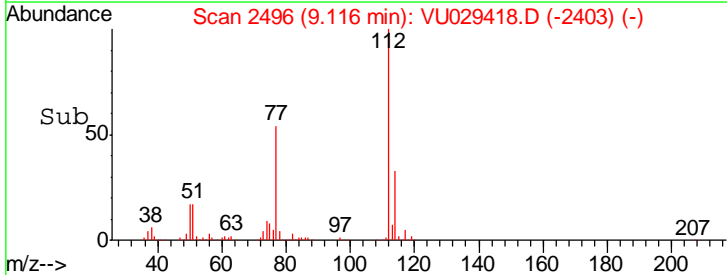
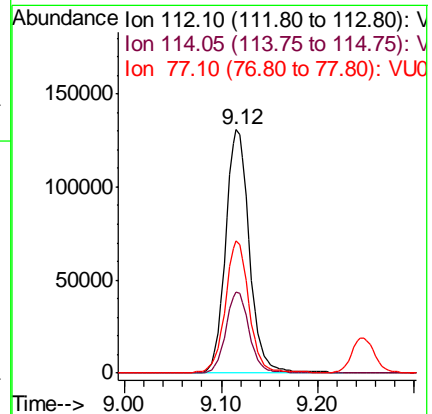
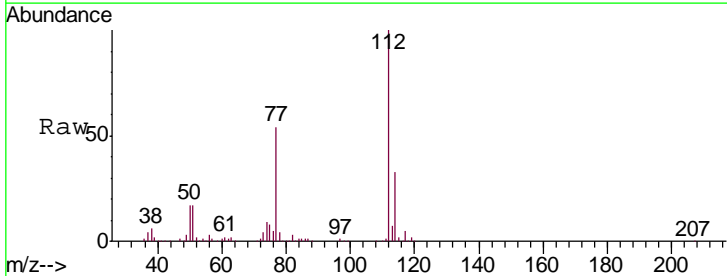
Instrument :
 MSVOA_U
 ClientSampled :
 VICV50

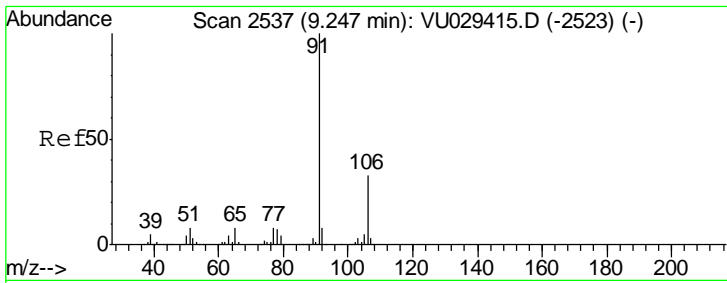
Tgt Ion	Resp	Lower	Upper
107	55293		
109	94.9	64.1	119.1
188	4.4	3.7	5.5



#51
 Chlorobenzene
 Concen: 4.944 ug/L
 RT: 9.12 min Scan# 2496
 Delta R.T. -0.00 min
 Lab File: VU029418.D
 Acq: 12 Feb 2019 14:15

Tgt Ion	Resp	Lower	Upper
112	222914		
114	33.3	22.9	42.5
77	54.4	41.8	62.6

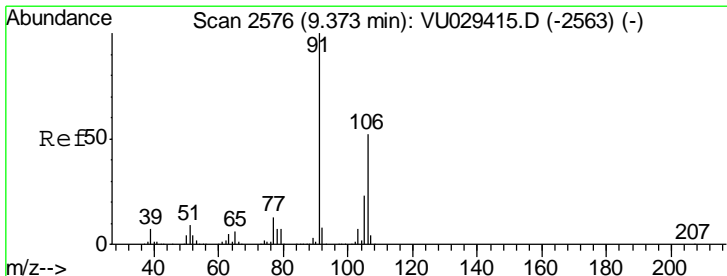
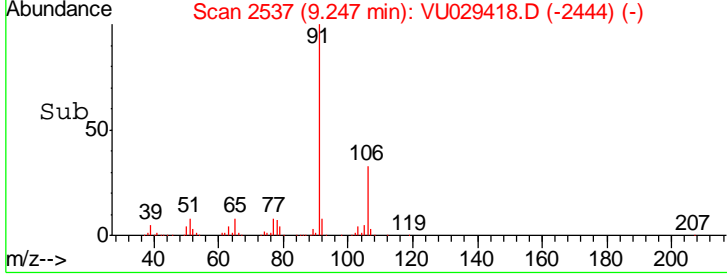
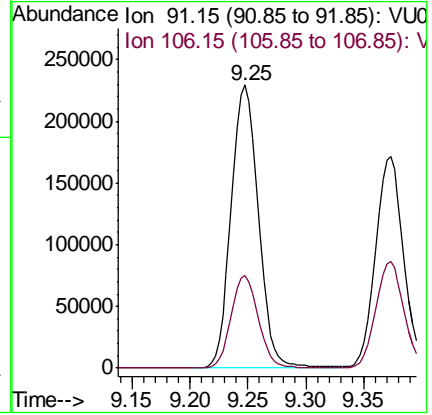
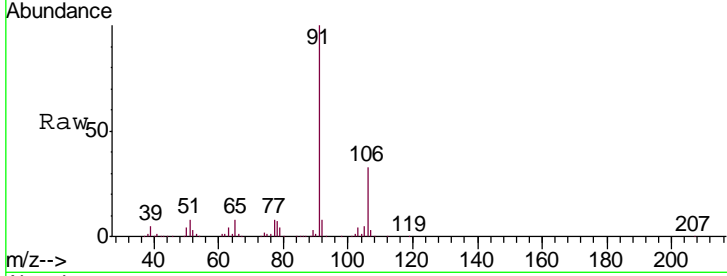




#52
 Ethylbenzene
 Concen: 5.027 ug/L
 RT: 9.25 min Scan# 2537
 Delta R.T. -0.00 min
 Lab File: VU029418.D
 Acq: 12 Feb 2019 14:15

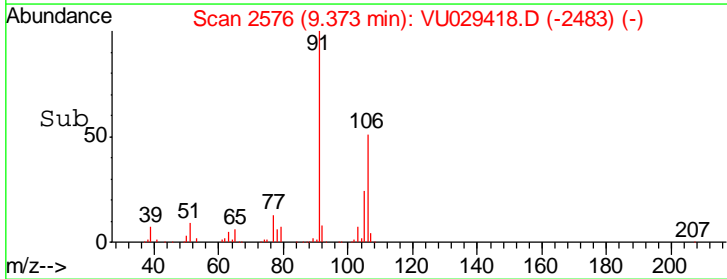
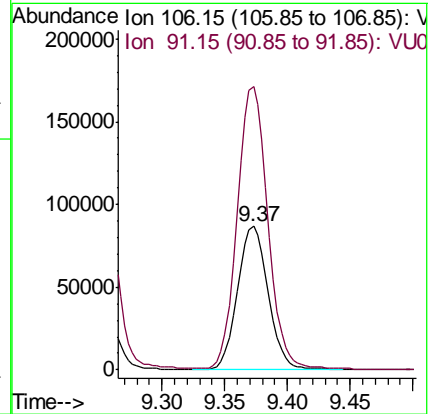
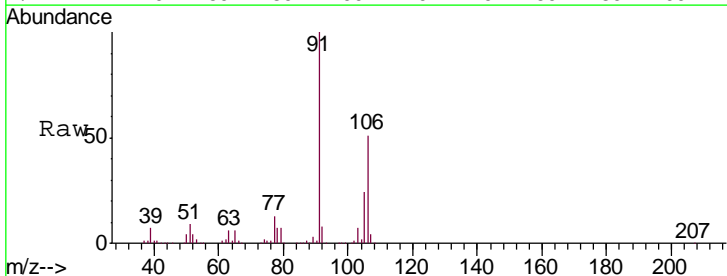
Instrument : MSVOA_U
 ClientSampled : VICV50

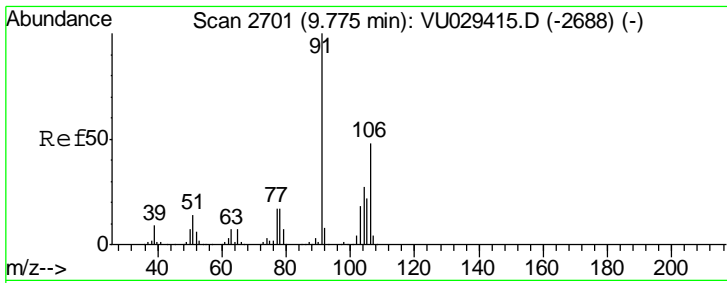
Tgt Ion: 91 Resp: 373197
 Ion Ratio Lower Upper
 91 100
 106 32.6 22.8 42.4



#53
 m,p-xylene
 Concen: 4.944 ug/L
 RT: 9.37 min Scan# 2576
 Delta R.T. -0.00 min
 Lab File: VU029418.D
 Acq: 12 Feb 2019 14:15

Tgt Ion: 106 Resp: 146353
 Ion Ratio Lower Upper
 106 100
 91 197.3 135.7 251.9

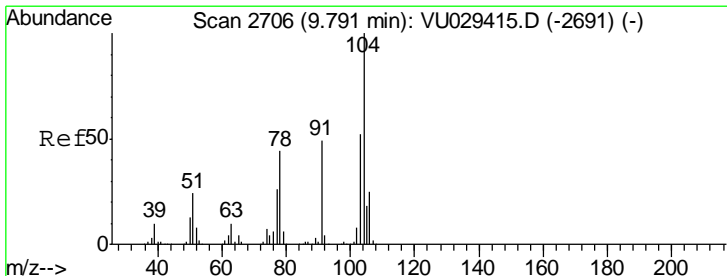
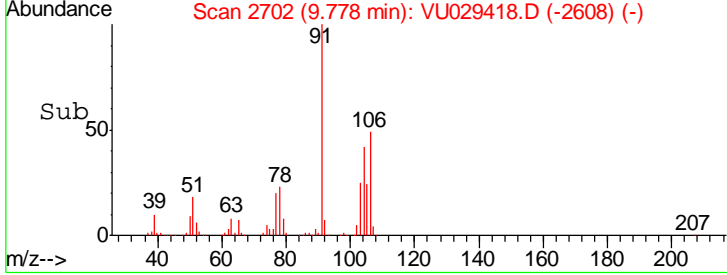
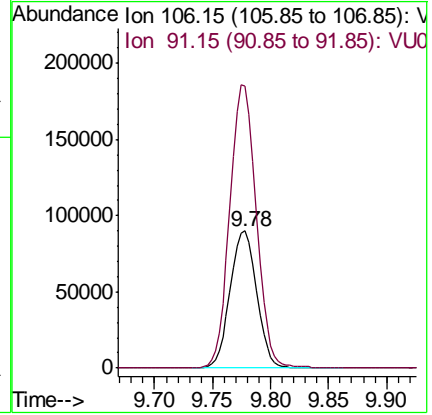
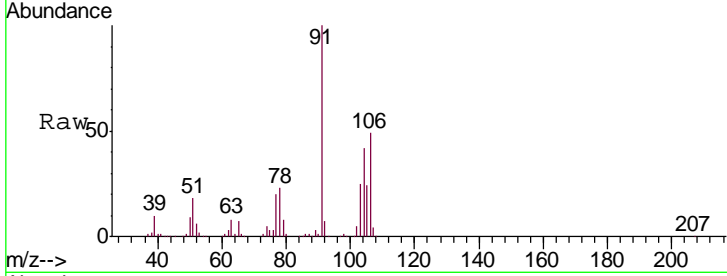




#54
 o-xylene
 Concen: 4.941 ug/L
 RT: 9.78 min Scan# 2702
 Delta R.T. 0.00 min
 Lab File: VU029418.D
 Acq: 12 Feb 2019 14:15

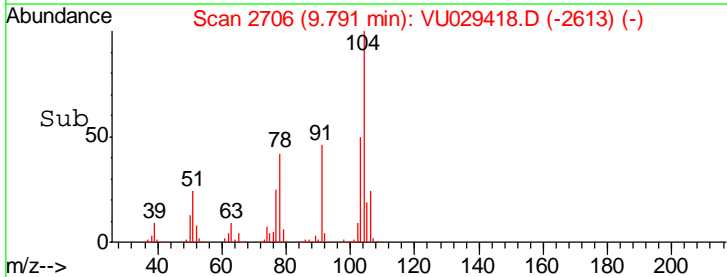
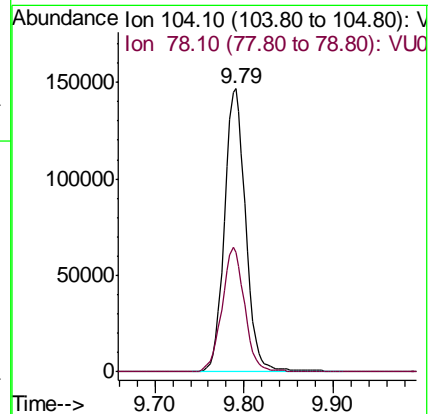
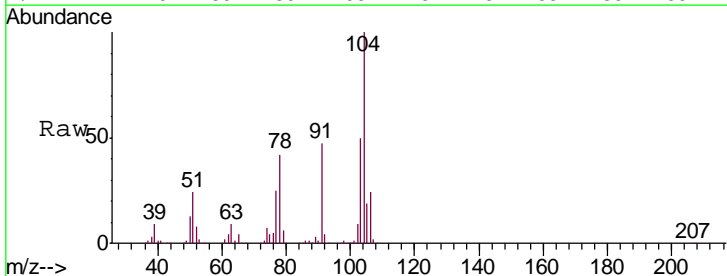
Instrument :
 MSVOA_U
 ClientSampled :
 VICV50

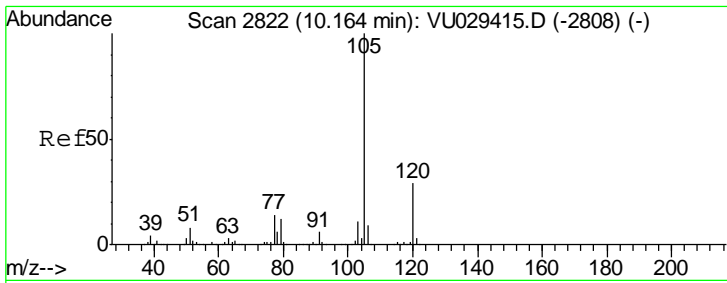
Tgt Ion:106 Resp: 143585
 Ion Ratio Lower Upper
 106 100
 91 205.6 145.1 269.5



#55
 Styrene
 Concen: 5.016 ug/L
 RT: 9.79 min Scan# 2706
 Delta R.T. -0.00 min
 Lab File: VU029418.D
 Acq: 12 Feb 2019 14:15

Tgt Ion:104 Resp: 241983
 Ion Ratio Lower Upper
 104 100
 78 42.3 30.5 56.7

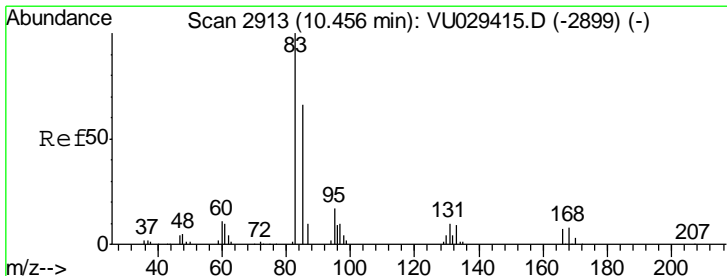
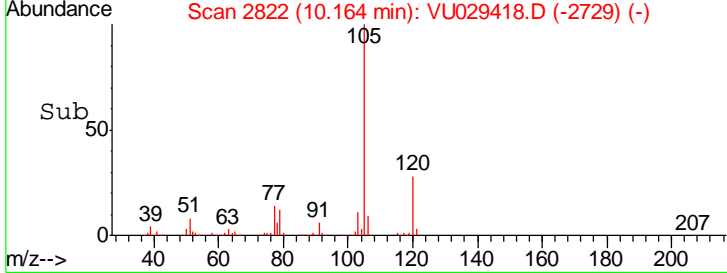
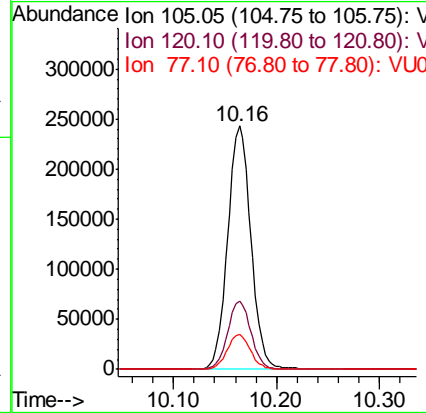
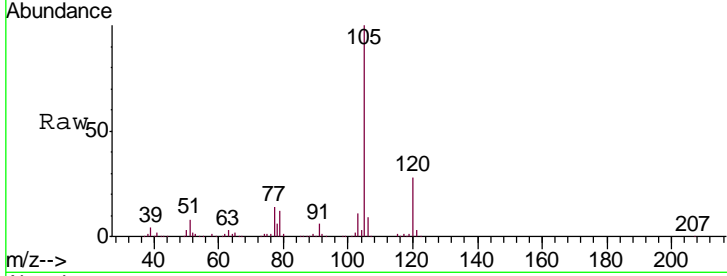




#56
 Isopropylbenzene
 Concen: 4.979 ug/L
 RT: 10.16 min Scan# 2822
 Delta R.T. -0.00 min
 Lab File: VU029418.D
 Acq: 12 Feb 2019 14:15

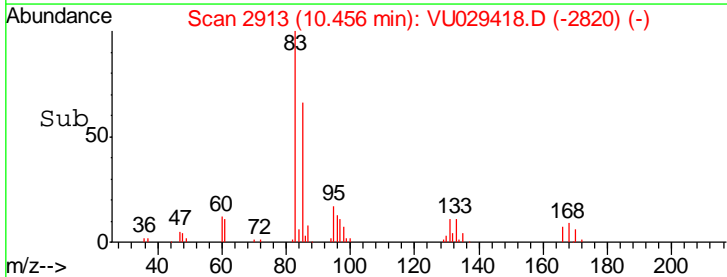
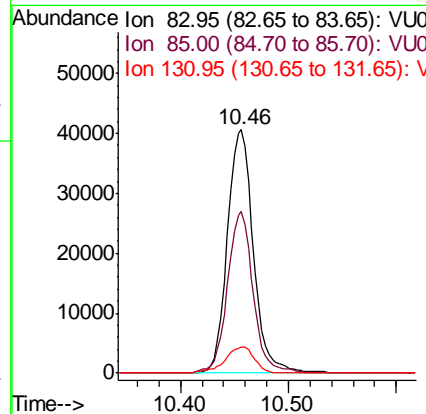
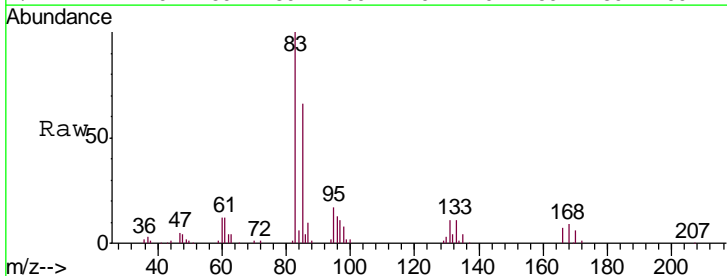
Instrument :
 MSVOA_U
 ClientSampled :
 VICV50

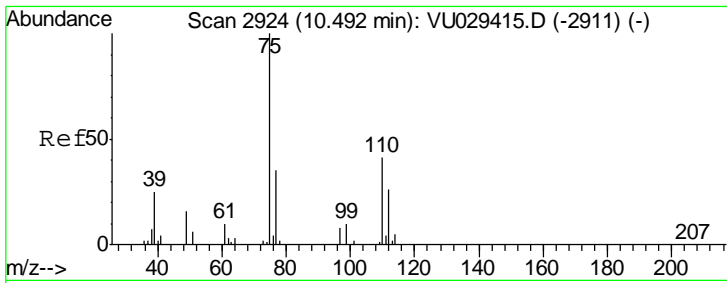
Tgt Ion	Resp	Lower	Upper
105	381593		
120	28.0	22.2	33.4
77	14.5	11.5	17.3



#58
 1,1,2,2-Tetrachloroethane
 Concen: 4.988 ug/L
 RT: 10.46 min Scan# 2913
 Delta R.T. -0.00 min
 Lab File: VU029418.D
 Acq: 12 Feb 2019 14:15

Tgt Ion	Resp	Lower	Upper
83	68226		
85	66.5	46.5	86.3
131	10.6	8.3	12.5

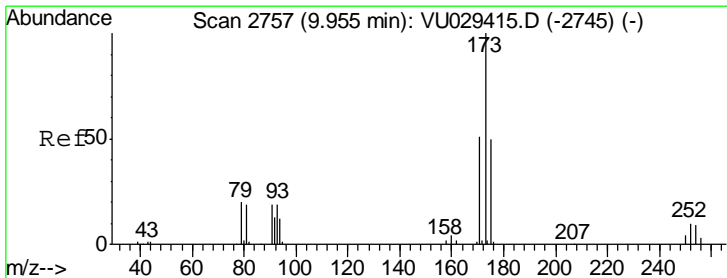
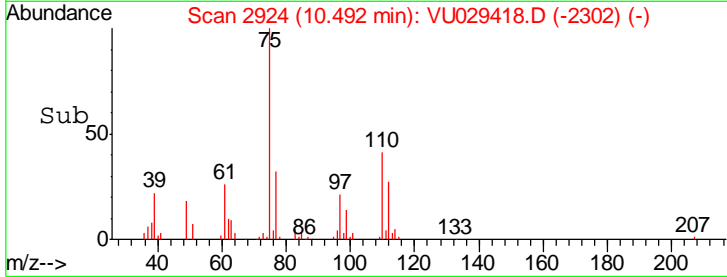
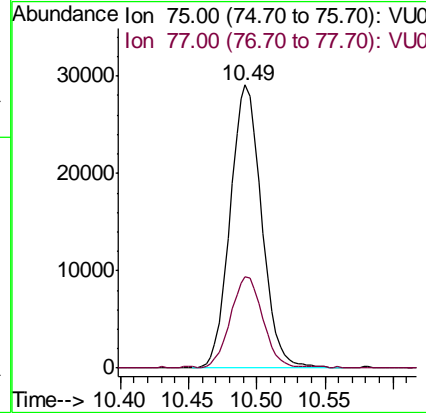
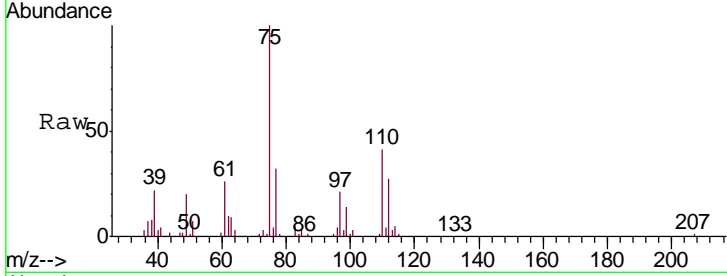




#59
 1,2,3-Trichloropropane
 Concen: 4.960 ug/L
 RT: 10.49 min Scan# 2924
 Delta R.T. -0.00 min
 Lab File: VU029418.D
 Acq: 12 Feb 2019 14:15

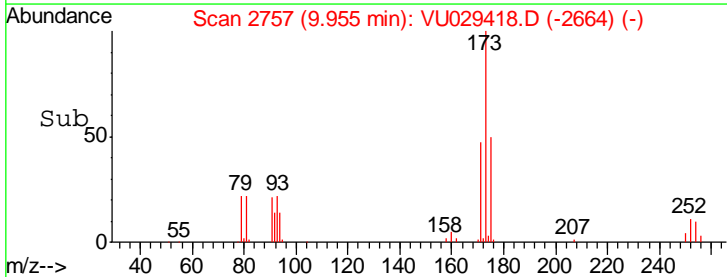
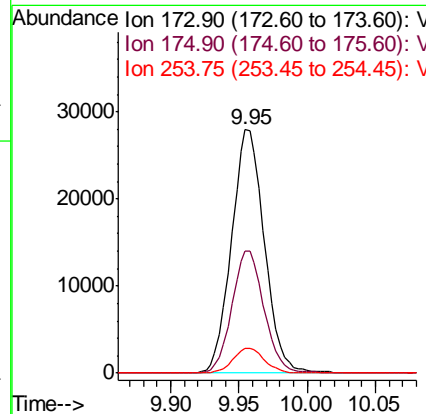
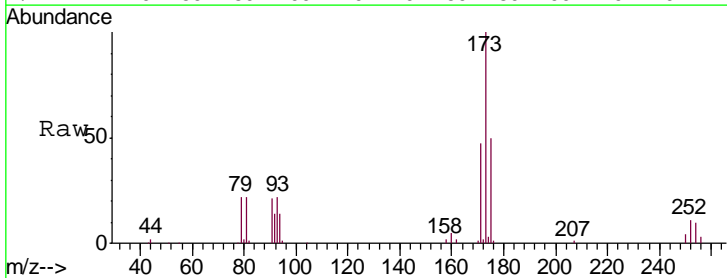
Instrument :
 MSVOA_U
 ClientSampled :
 VICV50

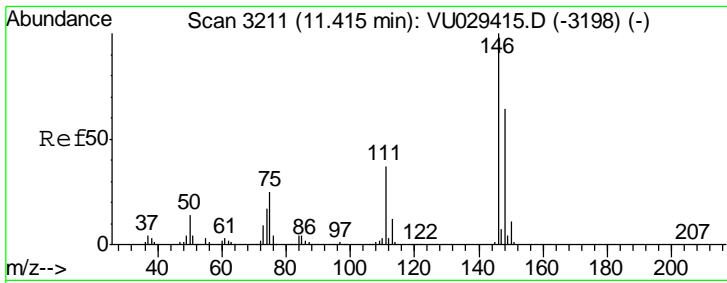
Tgt Ion: 75 Resp: 46553
 Ion Ratio Lower Upper
 75 100
 77 33.4 28.2 42.2



#61
 Bromoform
 Concen: 5.050 ug/L
 RT: 9.95 min Scan# 2757
 Delta R.T. -0.00 min
 Lab File: VU029418.D
 Acq: 12 Feb 2019 14:15

Tgt Ion: 173 Resp: 46881
 Ion Ratio Lower Upper
 173 100
 175 48.8 39.2 58.8
 254 9.7 7.8 11.6

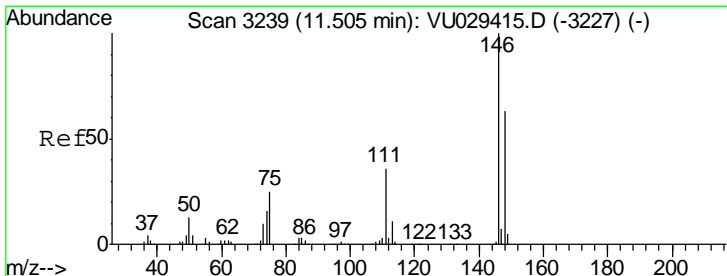
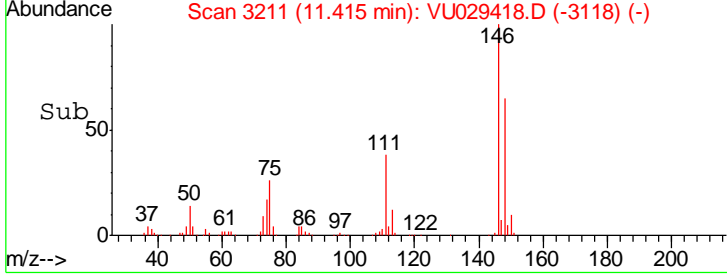
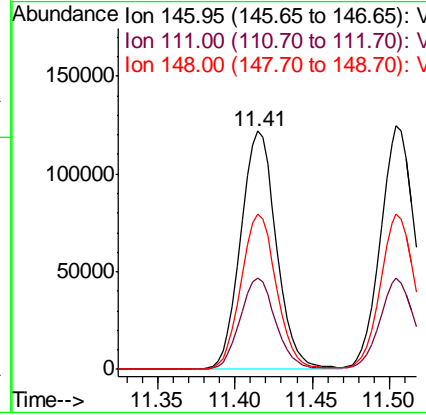
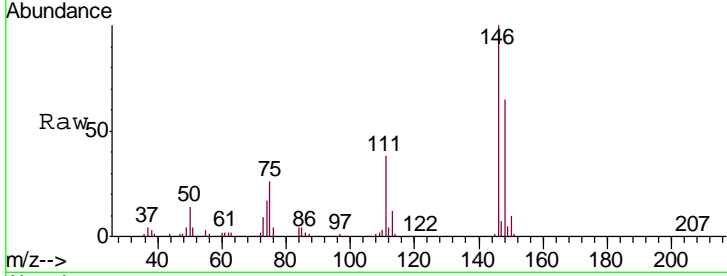




#62
 1,3-Dichlorobenzene
 Concen: 5.037 ug/L
 RT: 11.41 min Scan# 3211
 Delta R.T. -0.00 min
 Lab File: VU029418.D
 Acq: 12 Feb 2019 14:15

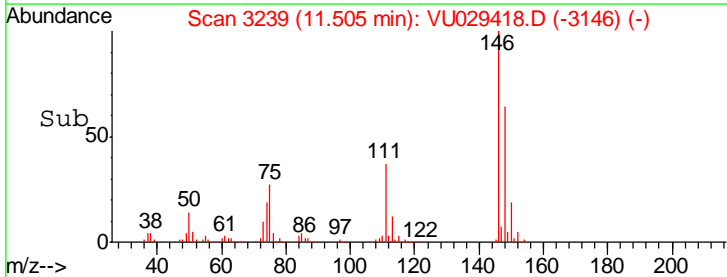
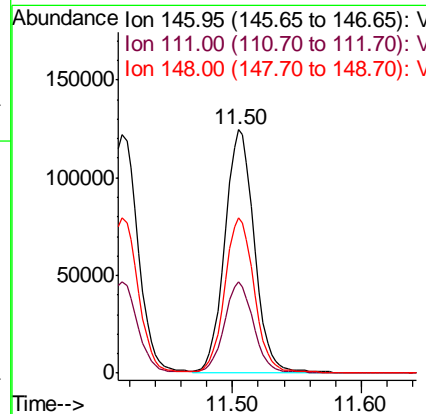
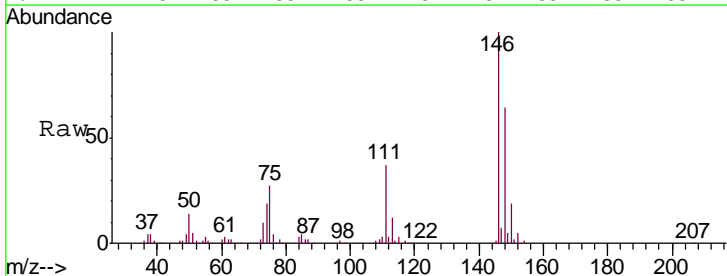
Instrument :
 MSVOA_U
 ClientSampled :
 VICV50

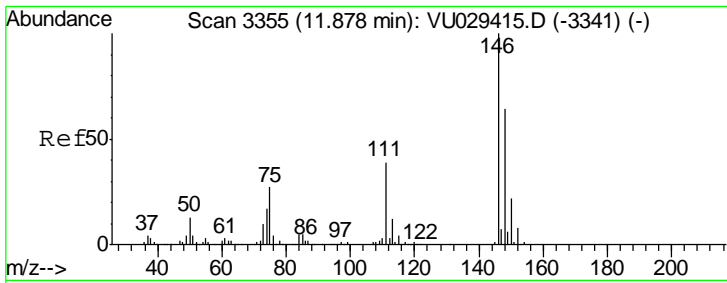
Tgt Ion	Resp	Lower	Upper
146	195705		
111	38.4	26.1	48.5
148	65.0	44.7	82.9



#63
 1,4-Dichlorobenzene
 Concen: 5.073 ug/L
 RT: 11.50 min Scan# 3239
 Delta R.T. -0.00 min
 Lab File: VU029418.D
 Acq: 12 Feb 2019 14:15

Tgt Ion	Resp	Lower	Upper
146	196844		
111	37.2	25.6	47.6
148	63.9	44.2	82.0

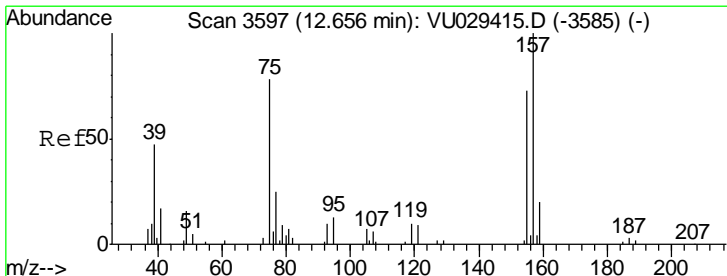
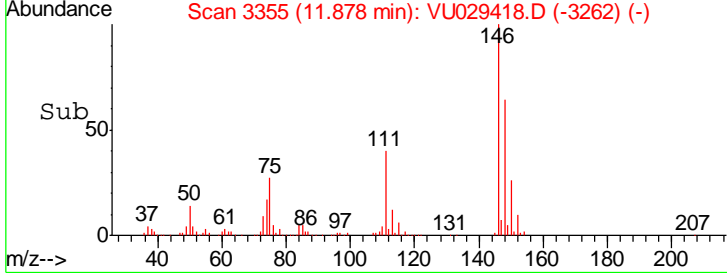
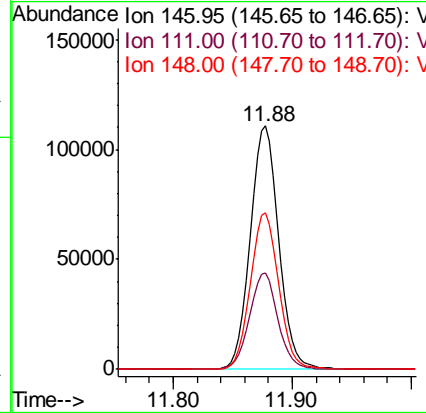
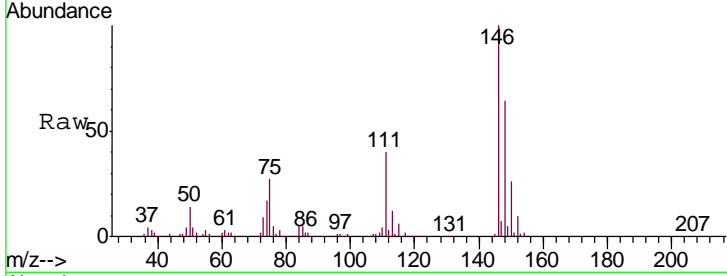




#65
 1,2-Dichlorobenzene
 Concen: 5.007 ug/L
 RT: 11.88 min Scan# 3355
 Delta R.T. -0.00 min
 Lab File: VU029418.D
 Acq: 12 Feb 2019 14:15

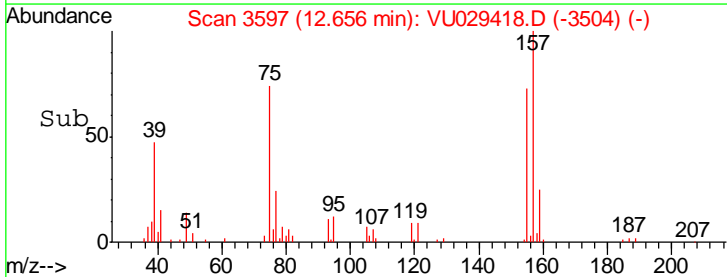
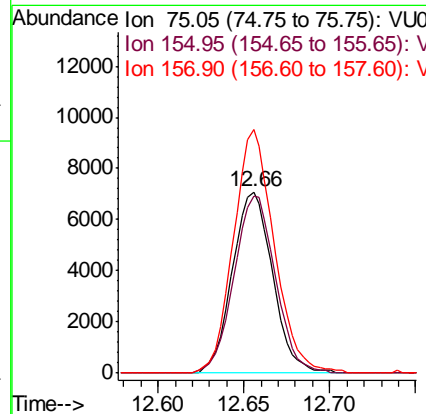
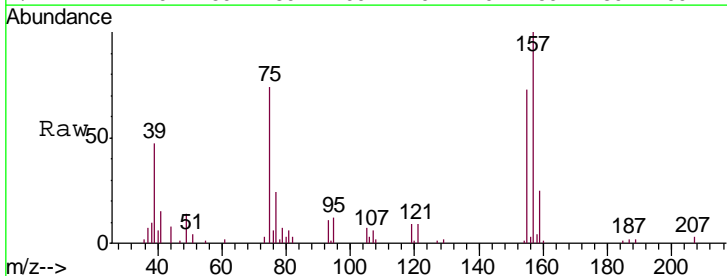
Instrument : MSVOA_U
 ClientSampled : VICV50

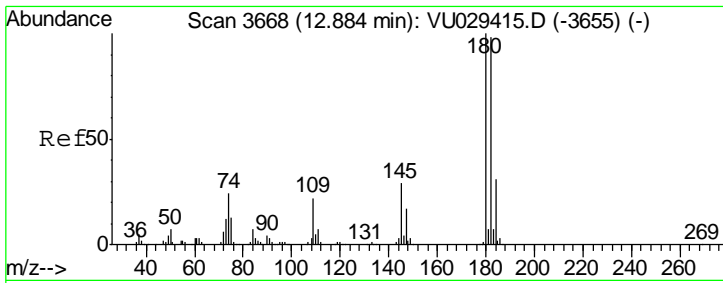
Tgt Ion	Resp	Lower	Upper
146	183296		
111	39.8	30.9	46.3
148	64.2	51.0	76.4



#66
 1,2-Dibromo-3-chloropropane
 Concen: 5.039 ug/L
 RT: 12.66 min Scan# 3597
 Delta R.T. -0.00 min
 Lab File: VU029418.D
 Acq: 12 Feb 2019 14:15

Tgt Ion	Resp	Lower	Upper
75	11540		
155	97.9	75.3	112.9
157	134.6	103.0	154.4

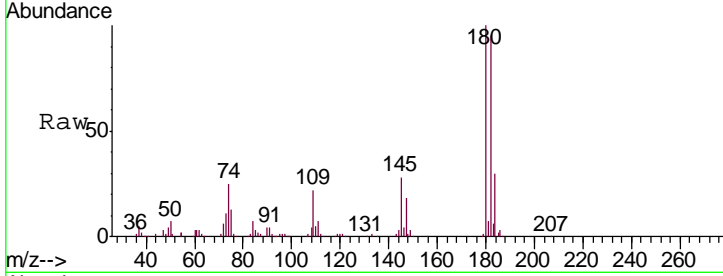




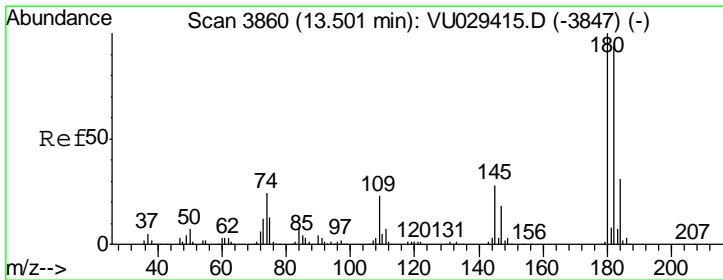
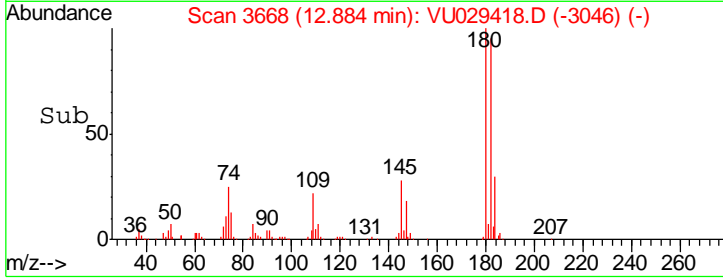
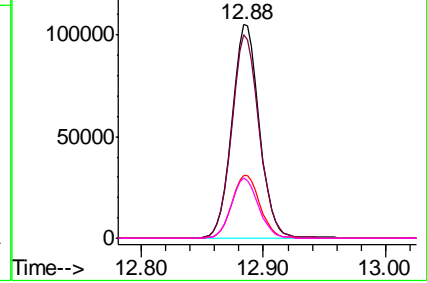
#67
 1,3,5-Trichlorobenzene
 Concen: 5.132 ug/L
 RT: 12.88 min Scan# 3668
 Delta R.T. -0.00 min
 Lab File: VU029418.D
 Acq: 12 Feb 2019 14:15

Instrument : MSVOA_U
 ClientSampled : VICV50

Tgt Ion	Resp	Lower	Upper
180	100		
182	95.4	76.0	114.0
184	30.1	24.1	36.1
145	27.9	22.6	34.0

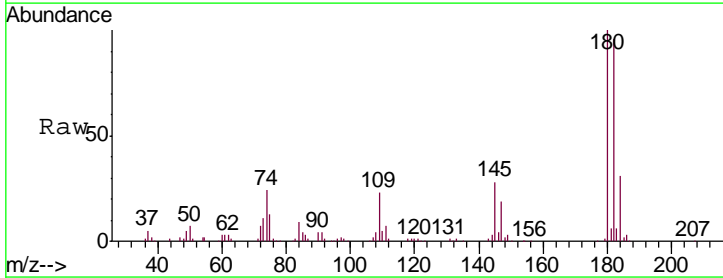


Abundance Ion 180.00 (179.70 to 180.70): V
 Ion 182.00 (181.70 to 182.70): V
 Ion 184.00 (183.70 to 184.70): V
 Ion 145.00 (144.70 to 145.70): V

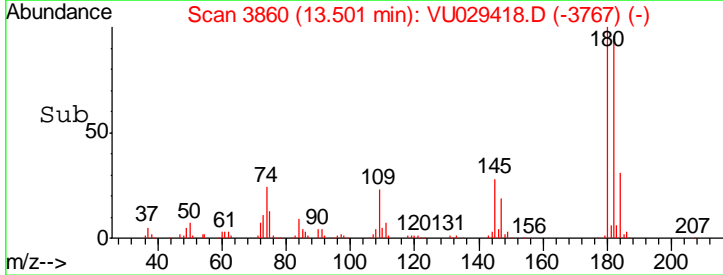
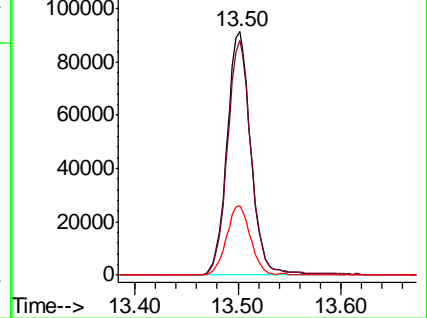


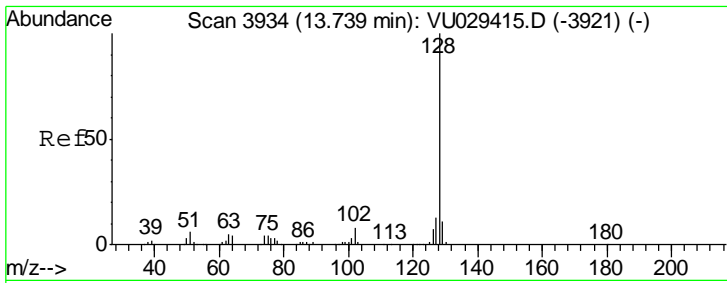
#68
 1,2,4-trichlorobenzene
 Concen: 5.416 ug/L
 RT: 13.50 min Scan# 3860
 Delta R.T. -0.00 min
 Lab File: VU029418.D
 Acq: 12 Feb 2019 14:15

Tgt Ion	Resp	Lower	Upper
180	100		
182	95.8	77.1	115.7
145	28.6	23.1	34.7



Abundance Ion 179.90 (179.60 to 180.60): V
 Ion 182.00 (181.70 to 182.70): V
 Ion 144.95 (144.65 to 145.65): V

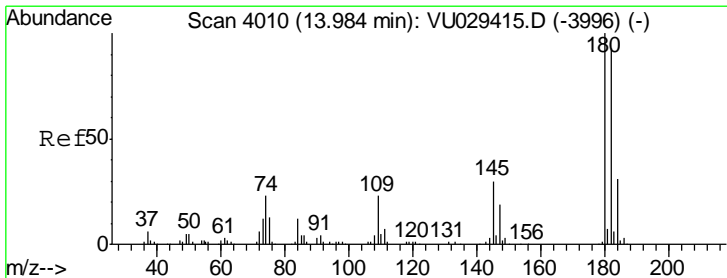
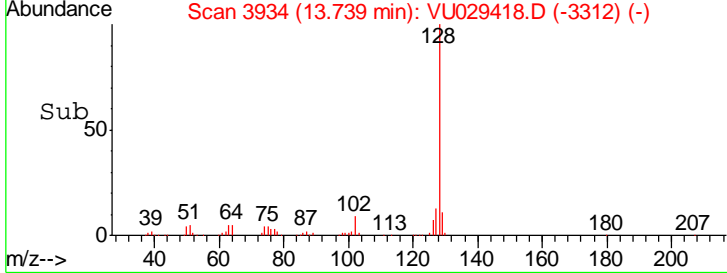
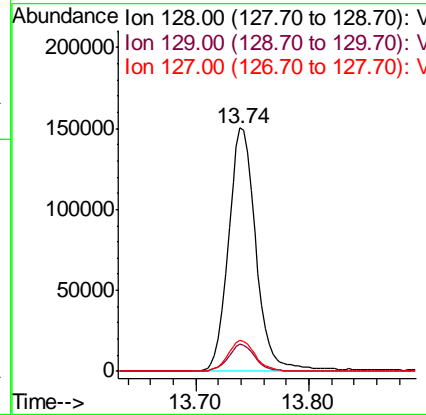
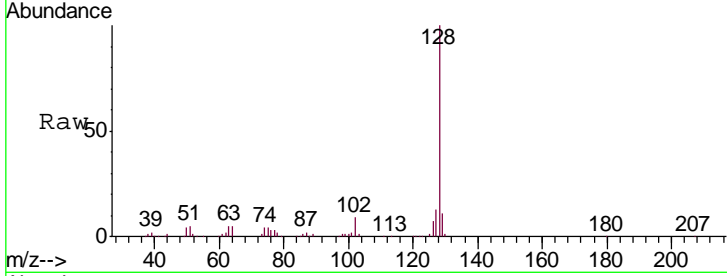




#69
 Naphthalene
 Concen: 5.439 ug/L
 RT: 13.74 min Scan# 3934
 Delta R.T. -0.00 min
 Lab File: VU029418.D
 Acq: 12 Feb 2019 14:15

Instrument :
 MSVOA_U
 ClientSampled :
 VICV50

Tgt Ion	Resp	Lower	Upper
128	100		
129	10.9	8.7	13.1
127	12.7	10.3	15.5



#70
 1,2,3-Trichlorobenzene
 Concen: 5.293 ug/L
 RT: 13.98 min Scan# 4010
 Delta R.T. -0.00 min
 Lab File: VU029418.D
 Acq: 12 Feb 2019 14:15

Tgt Ion	Resp	Lower	Upper
180	100		
182	95.0	75.9	113.9
145	30.3	23.8	35.6

