

Data File : VU029421.D
 Acq On : 12 Feb 2019 15:44
 Operator : JC/SP
 Sample : K1387-04
 Misc : 25.0mL/MSVOA_U/WATER
 ALS Vial : 11 Sample Multiplier: 1

Instrument :
 MSVOA_U
 ClientSampleId :
 VHBLK01

Quant Time: Feb 13 03:29:26 2019
 Quant Method : Z:\VOASRV\HPCHEM1\MSVOA_U\METHOD\SOMUTR021219WMA.M
 Quant Title : TRACE VOA SOM01.0
 QLast Update : Wed Feb 13 03:26:10 2019
 Response via : Initial Calibration

Internal Standards	R.T.	QIon	Response	Conc	Units	Dev(Min)
1) 1,4-Difluorobenzene	5.88	114	208111	5.00	ug/L	0.00
28) Chlorobenzene-d5	9.09	117	197086	5.00	ug/L	0.00
60) 1,4-Dichlorobenzene-d4	11.48	152	105399	5.00	ug/L	0.00

System Monitoring Compounds

4) Vinyl Chloride-d3	1.40	65	63935	4.57	ug/L	0.00
Spiked Amount	5.000	Range	40 - 130	Recovery	=	91.40%
7) Chloroethane-d5	1.68	69	62383	5.05	ug/L	0.00
Spiked Amount	5.000	Range	65 - 130	Recovery	=	101.00%
11) 1,1-Dichloroethene-d2	2.27	63	104041	3.42	ug/L	0.00
Spiked Amount	5.000	Range	60 - 125	Recovery	=	68.40%
20) 2-Butanone-d5	4.20	46	142394	48.98	ug/L	0.00
Spiked Amount	50.000	Range	40 - 130	Recovery	=	97.96%
24) Chloroform-d	4.64	84	99724	4.49	ug/L	0.00
Spiked Amount	5.000	Range	70 - 125	Recovery	=	89.80%
26) 1,2-Dichloroethane-d4	5.31	65	56767	4.79	ug/L	0.00
Spiked Amount	5.000	Range	70 - 130	Recovery	=	95.80%
32) Benzene-d6	5.34	84	233771	4.93	ug/L	0.00
Spiked Amount	5.000	Range	70 - 125	Recovery	=	98.60%
36) 1,2-Dichloropropane-d6	6.33	67	69280	4.95	ug/L	0.00
Spiked Amount	5.000	Range	60 - 140	Recovery	=	99.00%
41) Toluene-d8	7.56	98	223668	4.78	ug/L	0.00
Spiked Amount	5.000	Range	70 - 130	Recovery	=	95.60%
43) trans-1,3-Dichloropropene-	7.85	79	28641	4.58	ug/L	0.00
Spiked Amount	5.000	Range	55 - 130	Recovery	=	91.60%
46) 2-Hexanone-d5	8.31	63	145931	50.67	ug/L	0.00
Spiked Amount	50.000	Range	45 - 130	Recovery	=	101.34%
57) 1,1,2,2-Tetrachloroethane-	10.43	84	56015	4.60	ug/L	0.00
Spiked Amount	5.000	Range	65 - 120	Recovery	=	92.00%
64) 1,2-Dichlorobenzene-d4	11.86	152	93770	4.82	ug/L	0.00
Spiked Amount	5.000	Range	80 - 120	Recovery	=	96.40%

Target Compounds

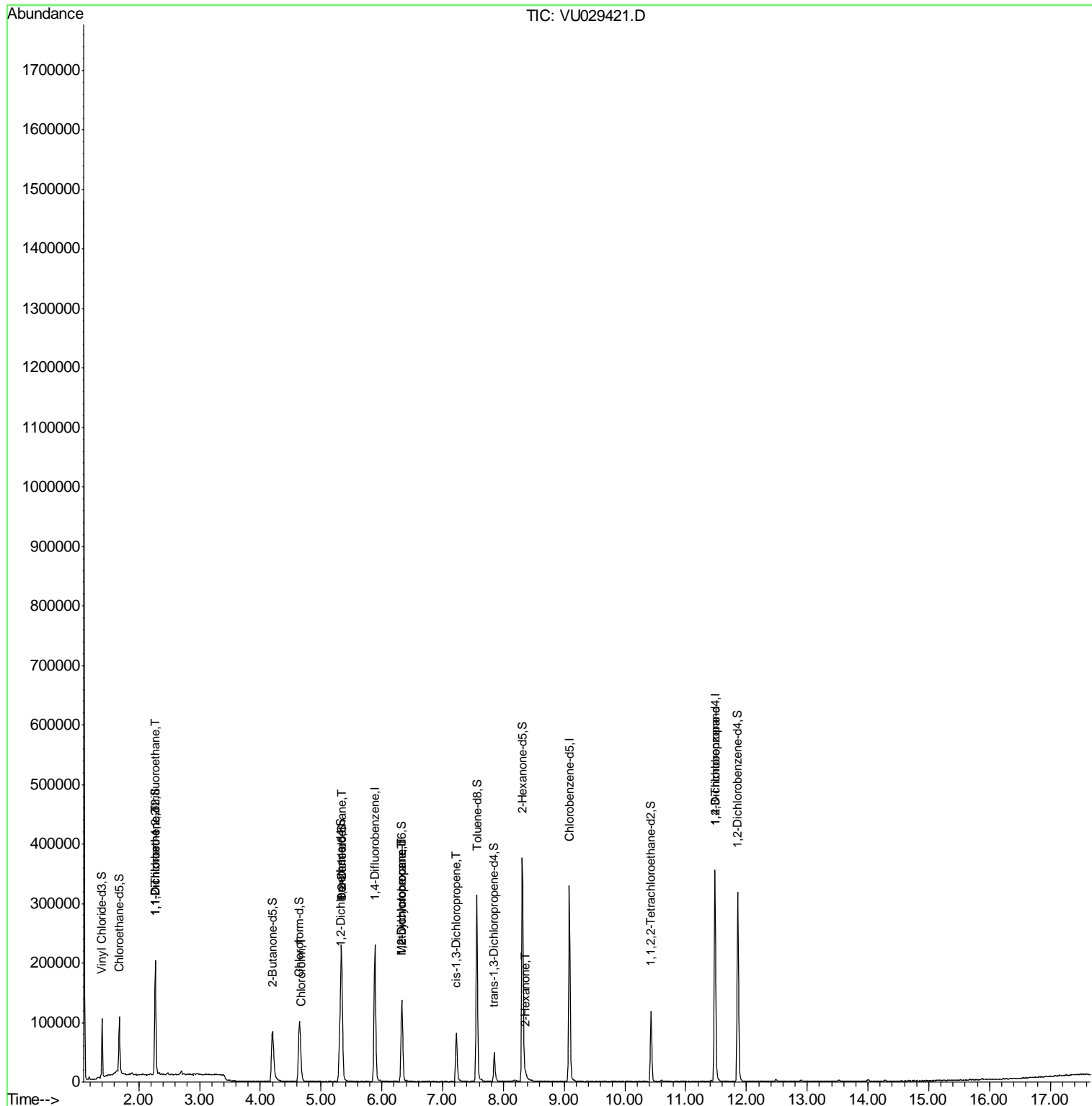
						Qvalue
10) 1,1,2-Trichloro-1,2,2-trif	2.27	101	1138	0.063	ug/L #	23
12) 1,1-Dichloroethene	2.27	96	1038	0.061	ug/L #	1
25) Chloroform	4.68	83	11478	0.417	ug/L	94
27) 1,2-Dichloroethane	5.34	62	1291	0.081	ug/L #	72
35) Methylcyclohexane	6.33	83	16928	0.617	ug/L #	22
37) 1,2-Dichloropropane	6.33	63	7455	0.513	ug/L #	87
39) cis-1,3-Dichloropropene	7.23	75	2390	0.105	ug/L #	53
48) 2-Hexanone	8.37	43	3561	0.583	ug/L #	73
59) 1,2,3-Trichloropropane	11.48	75	10740	1.152	ug/L	90

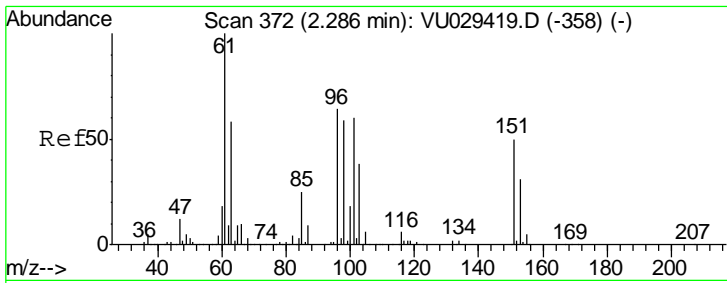
(#) = qualifier out of range (m) = manual integration (+) = signals summed

Data File : VU029421.D
Acq On : 12 Feb 2019 15:44
Operator : JC/SP
Sample : K1387-04
Misc : 25.0mL/MSVOA_U/WATER
ALS Vial : 11 Sample Multiplier: 1

Instrument :
MSVOA_U
ClientSampled :
VHBLK01

Quant Time: Feb 13 03:29:26 2019
Quant Method : Z:\VOASRV\HPCHEM1\MSVOA_U\METHOD\SOMUTR021219WMA.M
Quant Title : TRACE VOA SOM01.0
QLast Update : Wed Feb 13 03:26:10 2019
Response via : Initial Calibration

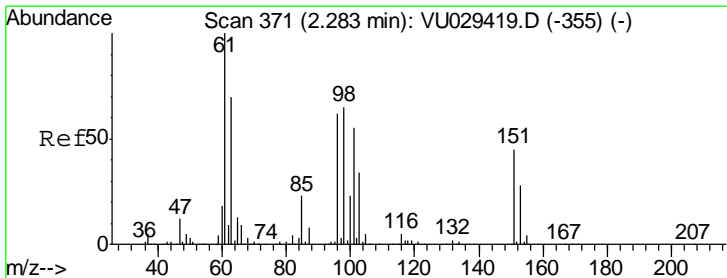
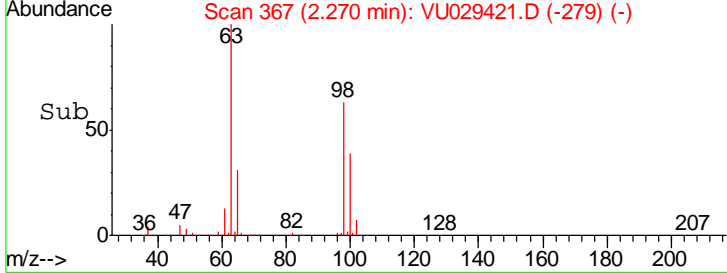
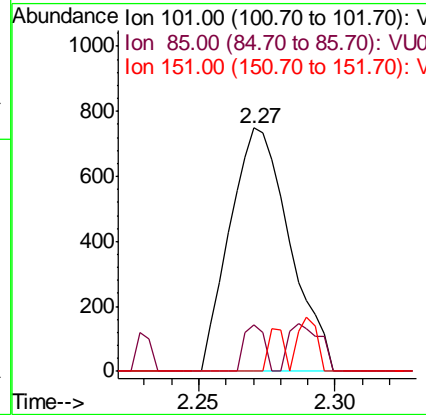
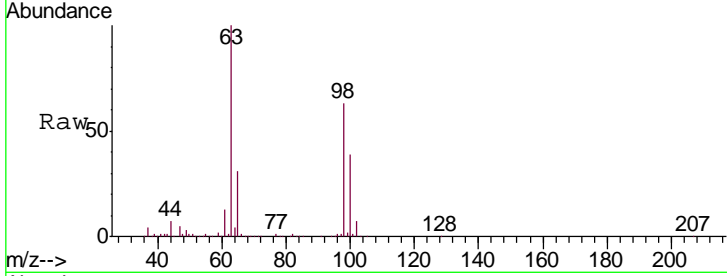




#10
 1,1,2-Trichloro-1,2,2-trifluoroethane
 Concen: 0.063 ug/L
 RT: 2.27 min Scan# 367
 Delta R.T. -0.02 min
 Lab File: VU029421.D
 Acq: 12 Feb 2019 15:44

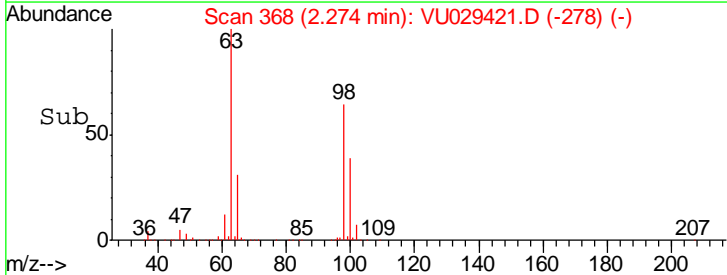
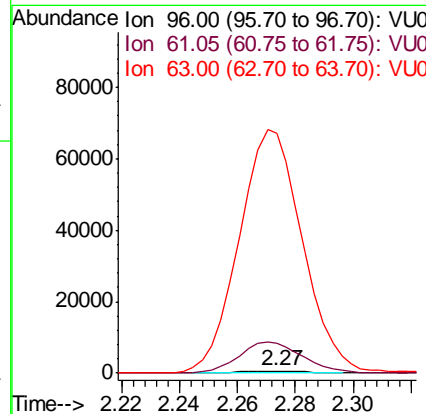
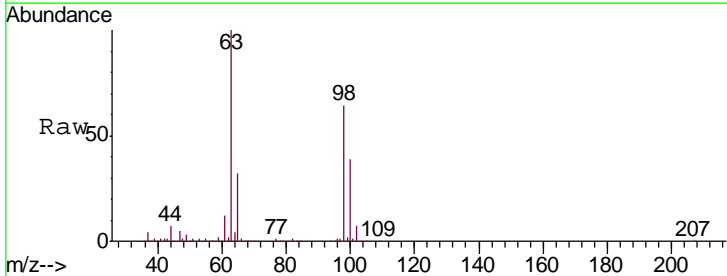
Instrument :
 MSVOA_U
 ClientSampled :
 VHBLK01

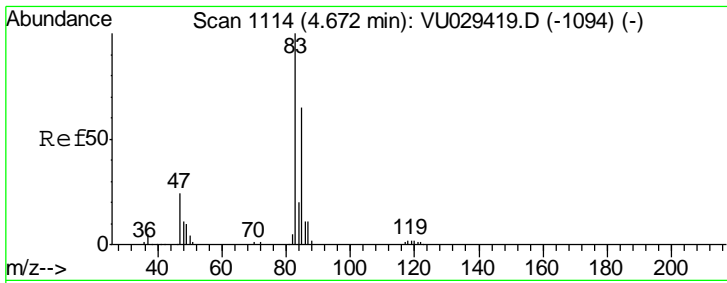
Tgt Ion	Resp	Lower	Upper
101	1138		
101	100		
85	6.5	35.1	52.7#
151	4.4	67.0	100.6#



#12
 1,1-Dichloroethene
 Concen: 0.061 ug/L
 RT: 2.27 min Scan# 368
 Delta R.T. -0.01 min
 Lab File: VU029421.D
 Acq: 12 Feb 2019 15:44

Tgt Ion	Resp	Lower	Upper
96	1038		
96	100		
61	1331.8	115.1	213.7#
63	10732.8	83.5	155.1#

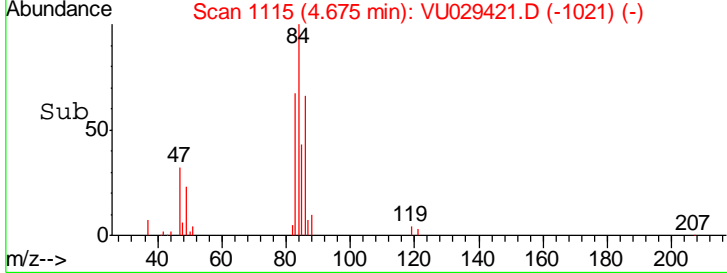
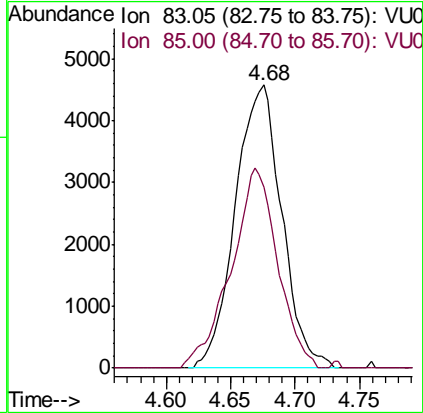
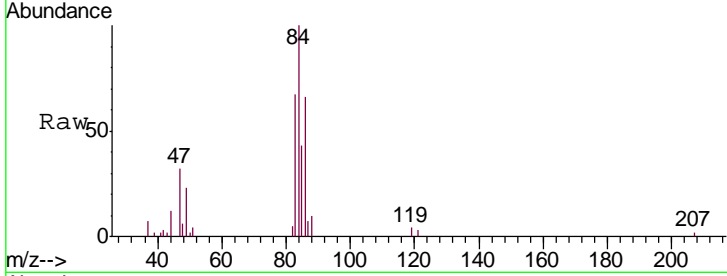




#25
 Chloroform
 Concen: 0.417 ug/L
 RT: 4.68 min Scan# 1115
 Delta R.T. 0.00 min
 Lab File: VU029421.D
 Acq: 12 Feb 2019 15:44

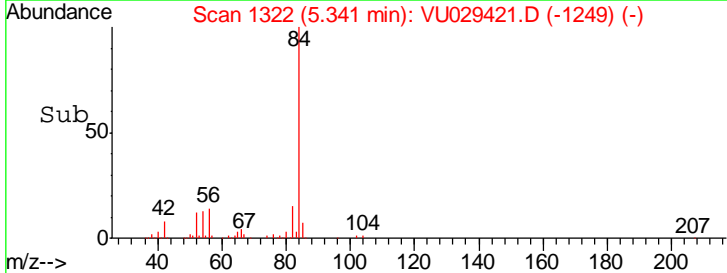
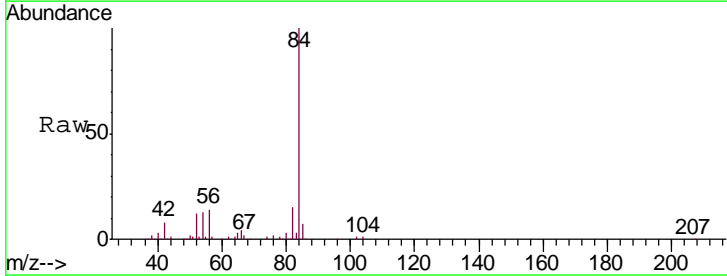
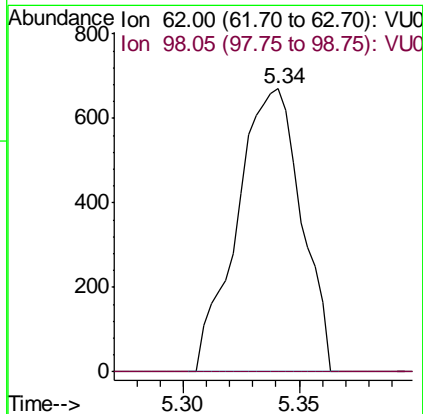
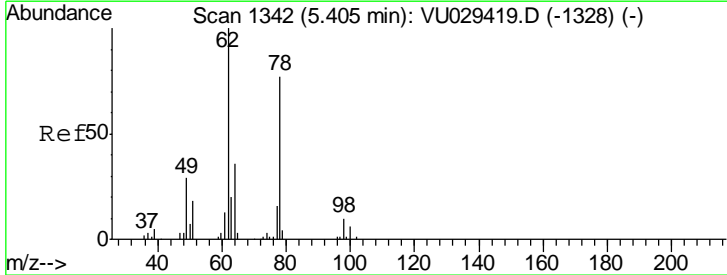
Instrument : MSVOA_U
 ClientSampled : VHBLK01

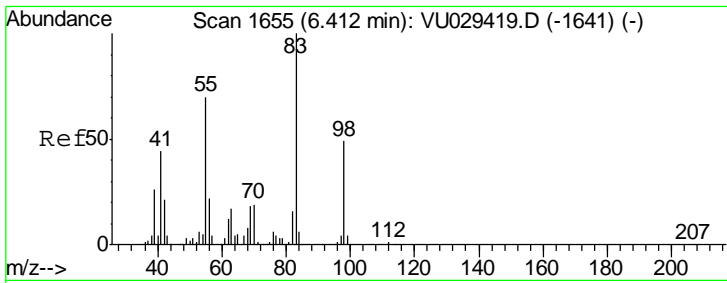
Tgt Ion: 83 Resp: 11478
 Ion Ratio Lower Upper
 83 100
 85 63.8 47.8 88.8



#27
 1,2-Dichloroethane
 Concen: 0.081 ug/L
 RT: 5.34 min Scan# 1322
 Delta R.T. -0.06 min
 Lab File: VU029421.D
 Acq: 12 Feb 2019 15:44

Tgt Ion: 62 Resp: 1291
 Ion Ratio Lower Upper
 62 100
 98 0.0 8.4 12.6#

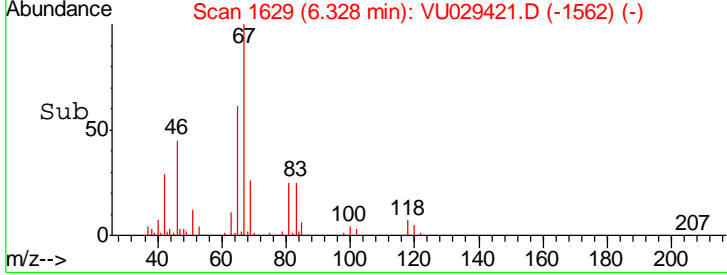
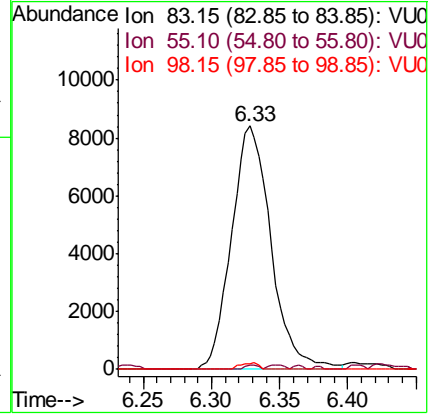
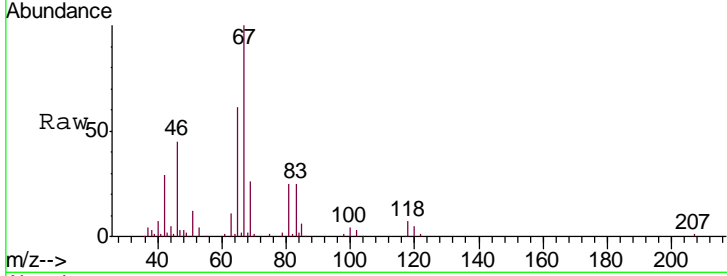




#35
 Methylcyclohexane
 Concen: 0.617 ug/L
 RT: 6.33 min Scan# 1629
 Delta R.T. -0.08 min
 Lab File: VU029421.D
 Acq: 12 Feb 2019 15:44

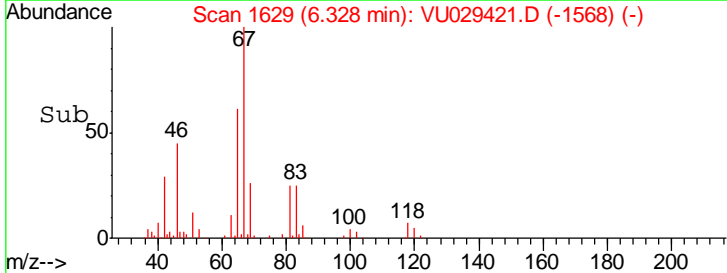
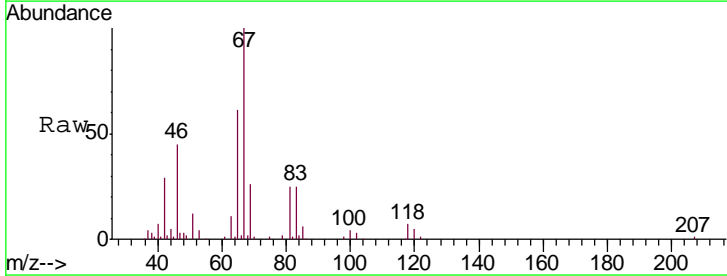
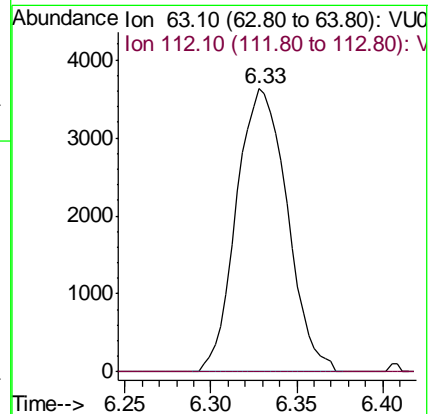
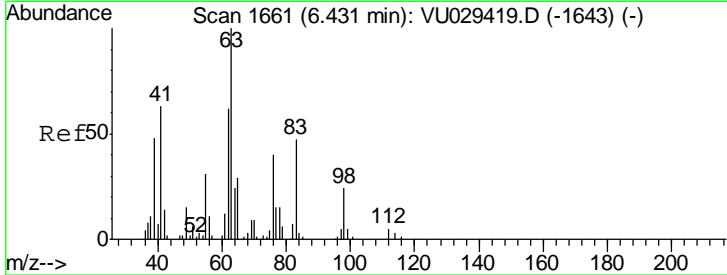
Instrument :
 MSVOA_U
ClientSampled :
 VHBLK01

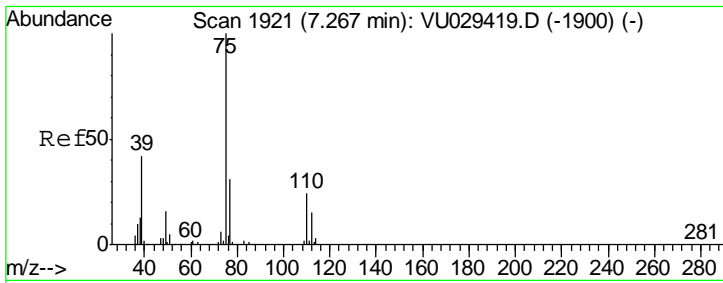
Tgt Ion	Resp	Lower	Upper
83	100		
55	0.6	55.9	83.9#
98	1.2	38.6	57.8#



#37
 1,2-Dichloropropane
 Concen: 0.513 ug/L
 RT: 6.33 min Scan# 1629
 Delta R.T. -0.10 min
 Lab File: VU029421.D
 Acq: 12 Feb 2019 15:44

Tgt Ion	Resp	Lower	Upper
63	100		
112	0.0	3.5	5.3#

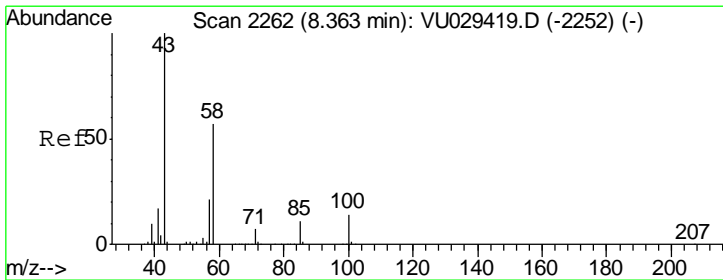
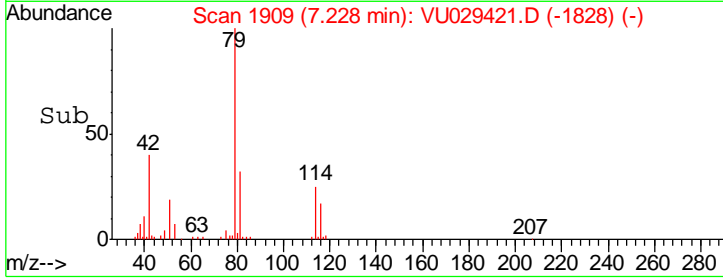
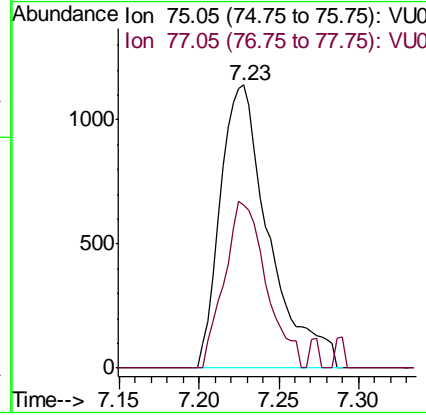
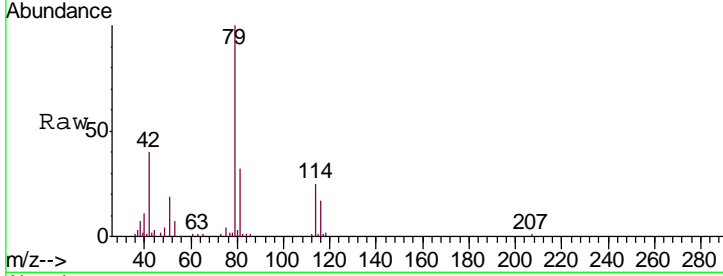




#39
 cis-1,3-Dichloropropene
 Concen: 0.105 ug/L
 RT: 7.23 min Scan# 1909
 Delta R.T. -0.04 min
 Lab File: VU029421.D
 Acq: 12 Feb 2019 15:44

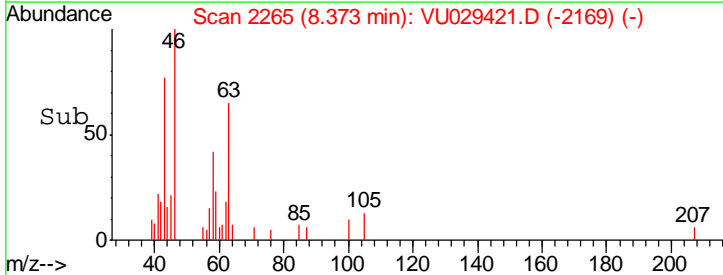
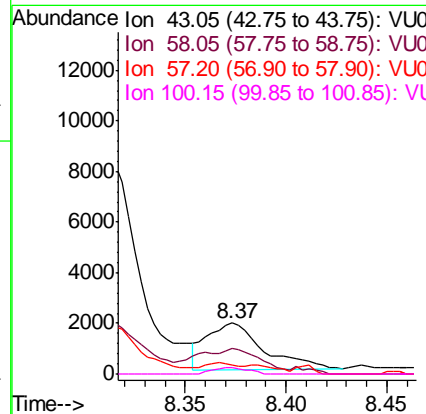
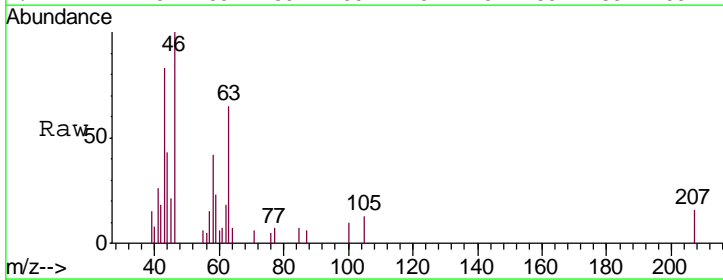
Instrument :
 MSVOA_U
 ClientSampled :
 VHBLK01

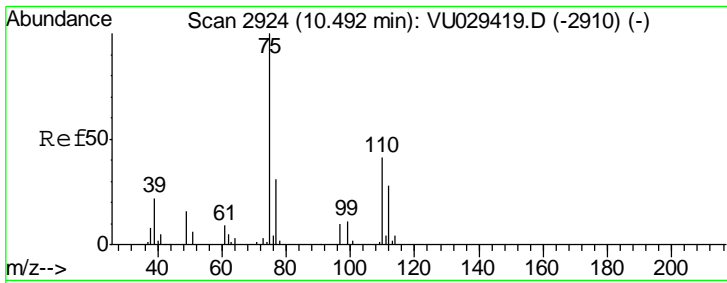
Tgt Ion: 75 Resp: 2390
 Ion Ratio Lower Upper
 75 100
 77 57.7 22.3 41.3#



#48
 2-Hexanone
 Concen: 0.583 ug/L
 RT: 8.37 min Scan# 2265
 Delta R.T. 0.01 min
 Lab File: VU029421.D
 Acq: 12 Feb 2019 15:44

Tgt Ion: 43 Resp: 3561
 Ion Ratio Lower Upper
 43 100
 58 35.9 45.7 68.5#
 57 5.8 16.4 24.6#
 100 8.2 11.1 16.7#





#59
 1,2,3-Trichloropropane
 Concen: 1.152 ug/L
 RT: 11.48 min Scan# 3232
 Delta R.T. 0.99 min
 Lab File: VU029421.D
 Acq: 12 Feb 2019 15:44

Instrument :
 MSVOA_U
 ClientSampled :
 VHBLK01

Tgt Ion: 75 Resp: 10740
 Ion Ratio Lower Upper
 75 100
 77 40.8 28.2 42.2

