

Data Path : Z:\VOASRV\HPCHEM1\MSVOA U\DATA\VU021219\
 Data File : VU029427.D
 Acq On : 12 Feb 2019 18:07
 Operator : JC/SP
 Sample : K1436-15
 Misc : 25.0mL/MSVOA U/WATER
 ALS Vial : 17 Sample Multiplier: 1

Instrument :
 MSVOA_U
 ClientSampleId :
 ESXA8

Quant Time: Feb 13 13:42:16 2019
 Quant Method : Z:\VOASRV\HPCHEM1\MSVOA_U\METHOD\SOMUTR021219WMA.M
 Quant Title : TRACE VOA SOM01.0
 QLast Update : Wed Feb 13 03:26:10 2019
 Response via : Initial Calibration

Internal Standards	R.T.	QIon	Response	Conc	Units	Dev(Min)
1) 1,4-Difluorobenzene	5.88	114	198998	5.00	ug/L	0.00
28) Chlorobenzene-d5	9.09	117	188020	5.00	ug/L	0.00
60) 1,4-Dichlorobenzene-d4	11.48	152	98846	5.00	ug/L	0.00

System Monitoring Compounds

4) Vinyl Chloride-d3	1.40	65	71311	5.33	ug/L	0.00
Spiked Amount	5.000	Range	40 - 130	Recovery	=	106.60%
7) Chloroethane-d5	1.68	69	61309	5.19	ug/L	0.00
Spiked Amount	5.000	Range	65 - 130	Recovery	=	103.80%
11) 1,1-Dichloroethene-d2	2.27	63	116015	3.99	ug/L	0.00
Spiked Amount	5.000	Range	60 - 125	Recovery	=	79.80%
20) 2-Butanone-d5	4.19	46	143287	51.54	ug/L	0.00
Spiked Amount	50.000	Range	40 - 130	Recovery	=	103.08%
24) Chloroform-d	4.65	84	111712	5.25	ug/L	0.00
Spiked Amount	5.000	Range	70 - 125	Recovery	=	105.00%
26) 1,2-Dichloroethane-d4	5.31	65	60297	5.32	ug/L	0.00
Spiked Amount	5.000	Range	70 - 130	Recovery	=	106.40%
32) Benzene-d6	5.34	84	250856	5.55	ug/L	0.00
Spiked Amount	5.000	Range	70 - 125	Recovery	=	111.00%
36) 1,2-Dichloropropane-d6	6.33	67	73256	5.48	ug/L	0.00
Spiked Amount	5.000	Range	60 - 140	Recovery	=	109.60%
41) Toluene-d8	7.56	98	238204	5.34	ug/L	0.00
Spiked Amount	5.000	Range	70 - 130	Recovery	=	106.80%
43) trans-1,3-Dichloropropene-	7.85	79	28336	4.75	ug/L	0.00
Spiked Amount	5.000	Range	55 - 130	Recovery	=	95.00%
46) 2-Hexanone-d5	8.31	63	146232	53.22	ug/L	0.00
Spiked Amount	50.000	Range	45 - 130	Recovery	=	106.44%
57) 1,1,2,2-Tetrachloroethane-	10.43	84	60595	5.22	ug/L	0.00
Spiked Amount	5.000	Range	65 - 120	Recovery	=	104.40%
64) 1,2-Dichlorobenzene-d4	11.86	152	103439	5.67	ug/L	0.00
Spiked Amount	5.000	Range	80 - 120	Recovery	=	113.40%

Target Compounds

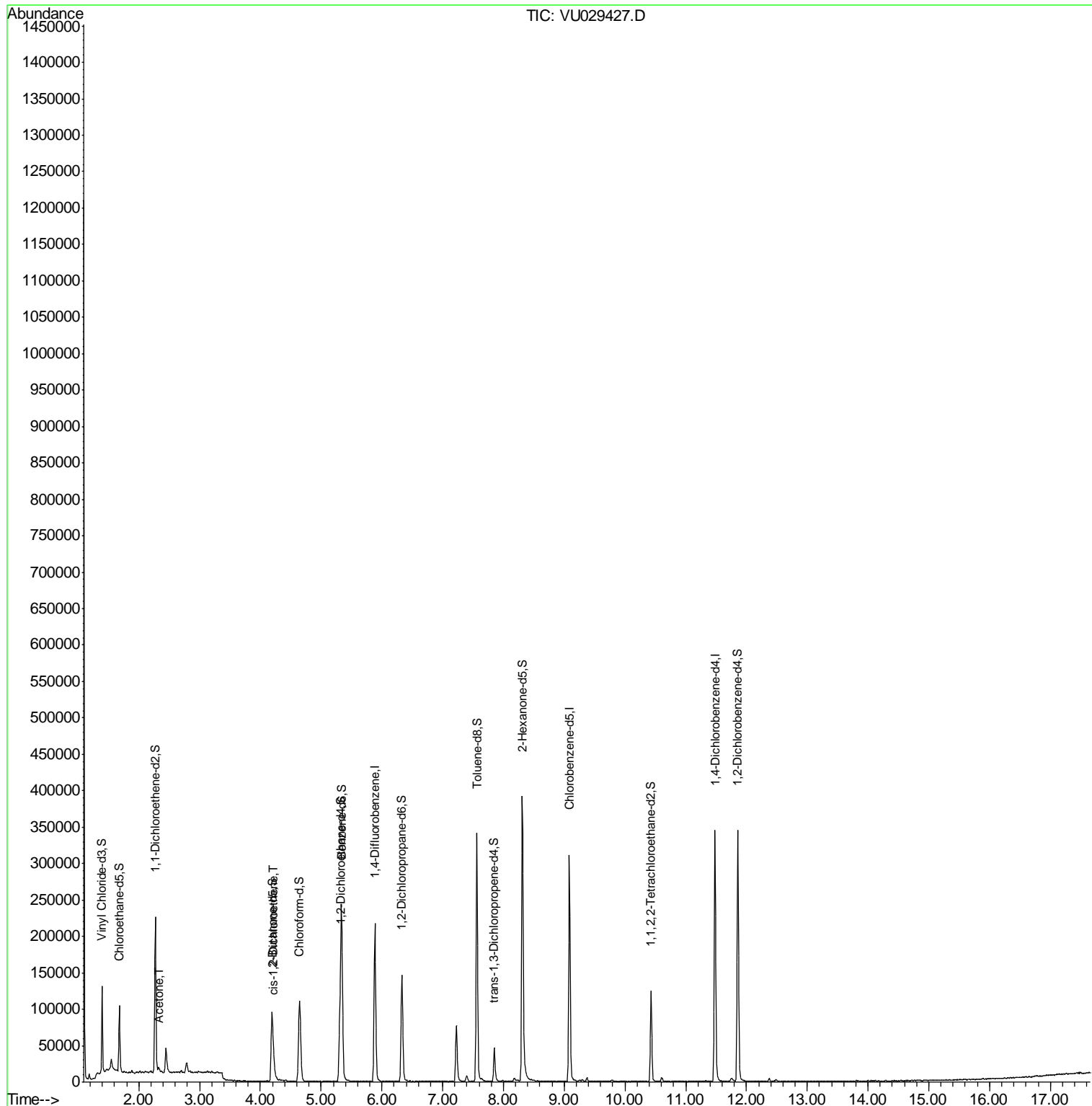
Target Compounds	R.T.	QIon	Response	Conc	Units	Ovalue
13) Acetone	2.32	43	5162	2.044	ug/L	95
22) cis-1,2-Dichloroethene	4.22	96	4145	0.258	ug/L	92

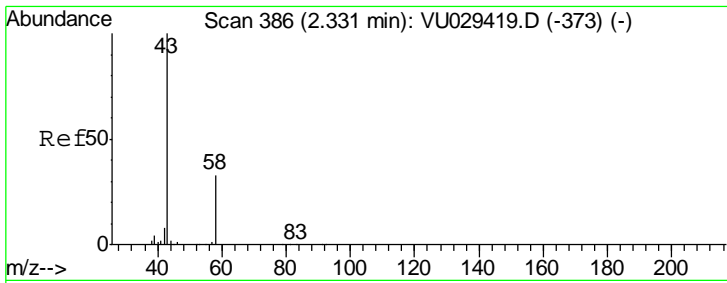
(#) = qualifier out of range (m) = manual integration (+) = signals summed

Data Path : Z:\VOASRV\HPCHEM1\MSVOA U\DATA\VU021219\
 Data File : VU029427.D
 Acq On : 12 Feb 2019 18:07
 Operator : JC/SP
 Sample : K1436-15
 Misc : 25.0mL/MSVOA U/WATER
 ALS Vial : 17 Sample Multiplier: 1

Instrument :
 MSVOA_U
 ClientSampleId :
 ESXA8

Quant Time: Feb 13 13:42:16 2019
 Quant Method : Z:\VOASRV\HPCHEM1\MSVOA_U\METHOD\SOMUTR021219WMA.M
 Quant Title : TRACE VOA SOM01.0
 QLast Update : Wed Feb 13 03:26:10 2019
 Response via : Initial Calibration

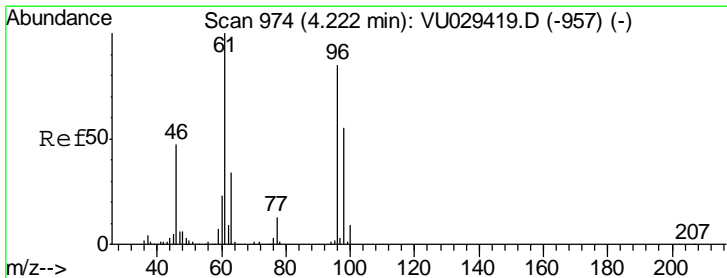
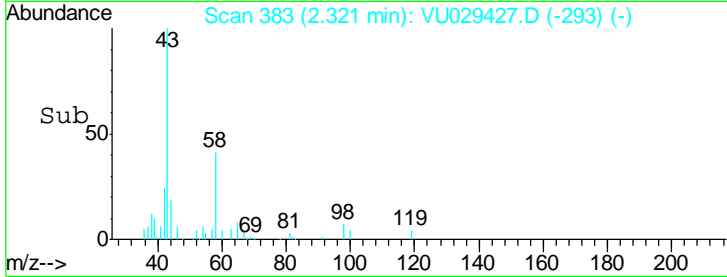
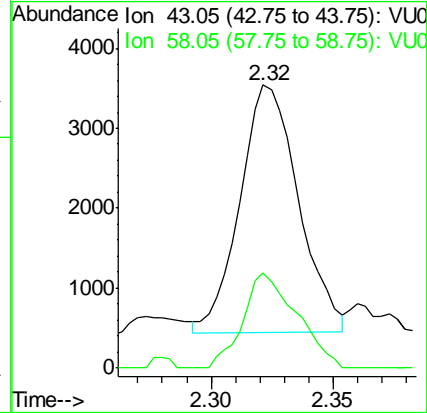
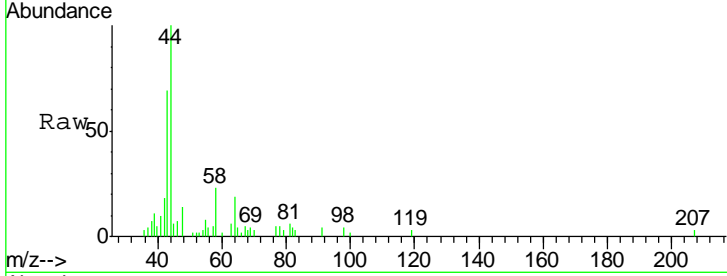




#13
 Acetone
 Concen: 2.044 ug/L
 RT: 2.32 min Scan# 383
 Delta R.T. -0.01 min
 Lab File: VU029427.D
 Acq: 12 Feb 2019 18:07

Instrument : MSVOA_U
 ClientSampled : ESXA8

Tgt Ion	Resp	Lower	Upper
43	100		
58	35.1	0.0	65.0



#22
 cis-1,2-Dichloroethene
 Concen: 0.258 ug/L
 RT: 4.22 min Scan# 974
 Delta R.T. -0.00 min
 Lab File: VU029427.D
 Acq: 12 Feb 2019 18:07

Tgt Ion	Resp	Lower	Upper
96	100		
61	105.8	79.9	148.5
68	0.0	0.0	0.0

