

Data Path : Z:\VOASRV\HPCHEM1\MSVOA U\DATA\VU021220\
 Data File : VU036744.D
 Acq On : 12 Feb 2020 12:04
 Operator : JC/MD
 Sample : L1487-02
 Misc : 25.0mL/MSVOA U/WATER
 ALS Vial : 24 Sample Multiplier: 1

Instrument :
 MSVOA_U
 ClientSampleId :
 DBCT4

Quant Time: Feb 13 01:27:56 2020
 Quant Method : Z:\VOASRV\HPCHEM1\MSVOA_U\METHOD\SOMUTR021220WMA.M
 Quant Title : TRACE VOA SOM01.0
 QLast Update : Thu Feb 13 00:59:33 2020
 Response via : Initial Calibration

Internal Standards	R.T.	QIon	Response	Conc	Units	Dev(Min)
1) 1,4-Difluorobenzene	6.29	114	126273	5.00	ug/L	0.00
28) Chlorobenzene-d5	9.44	117	116866	5.00	ug/L	0.00
60) 1,4-Dichlorobenzene-d4	11.83	152	46294	5.00	ug/L	0.00

System Monitoring Compounds

4) Vinyl Chloride-d3	1.61	65	48807	4.49	ug/L	0.00
Spiked Amount	5.000	Range	40 - 130	Recovery	=	89.80%
7) Chloroethane-d5	1.93	69	43682	4.63	ug/L	0.00
Spiked Amount	5.000	Range	65 - 130	Recovery	=	92.60%
11) 1,1-Dichloroethene-d2	2.59	63	63318	3.49	ug/L	0.00
Spiked Amount	5.000	Range	60 - 125	Recovery	=	69.80%
20) 2-Butanone-d5	4.67	46	96090	42.20	ug/L	-0.02
Spiked Amount	50.000	Range	40 - 130	Recovery	=	84.40%
24) Chloroform-d	5.11	84	68101	4.06	ug/L	0.00
Spiked Amount	5.000	Range	70 - 125	Recovery	=	81.20%
26) 1,2-Dichloroethane-d4	5.74	65	42774	4.46	ug/L	0.00
Spiked Amount	5.000	Range	70 - 130	Recovery	=	89.20%
32) Benzene-d6	5.76	84	168467	4.74	ug/L	0.00
Spiked Amount	5.000	Range	70 - 125	Recovery	=	94.80%
36) 1,2-Dichloropropane-d6	6.73	67	53272	4.73	ug/L	0.00
Spiked Amount	5.000	Range	60 - 140	Recovery	=	94.60%
41) Toluene-d8	7.93	98	151248	4.57	ug/L	0.00
Spiked Amount	5.000	Range	70 - 130	Recovery	=	91.40%
43) trans-1,3-Dichloropropene-	8.21	79	19481	4.44	ug/L	0.00
Spiked Amount	5.000	Range	55 - 130	Recovery	=	88.80%
46) 2-Hexanone-d5	8.66	63	91173	45.55	ug/L	0.00
Spiked Amount	50.000	Range	45 - 130	Recovery	=	91.10%
57) 1,1,2,2-Tetrachloroethane-	10.78	84	39464	4.44	ug/L	0.00
Spiked Amount	5.000	Range	65 - 120	Recovery	=	88.80%
64) 1,2-Dichlorobenzene-d4	12.21	152	45063	4.87	ug/L	0.00
Spiked Amount	5.000	Range	80 - 120	Recovery	=	97.40%

Target Compounds

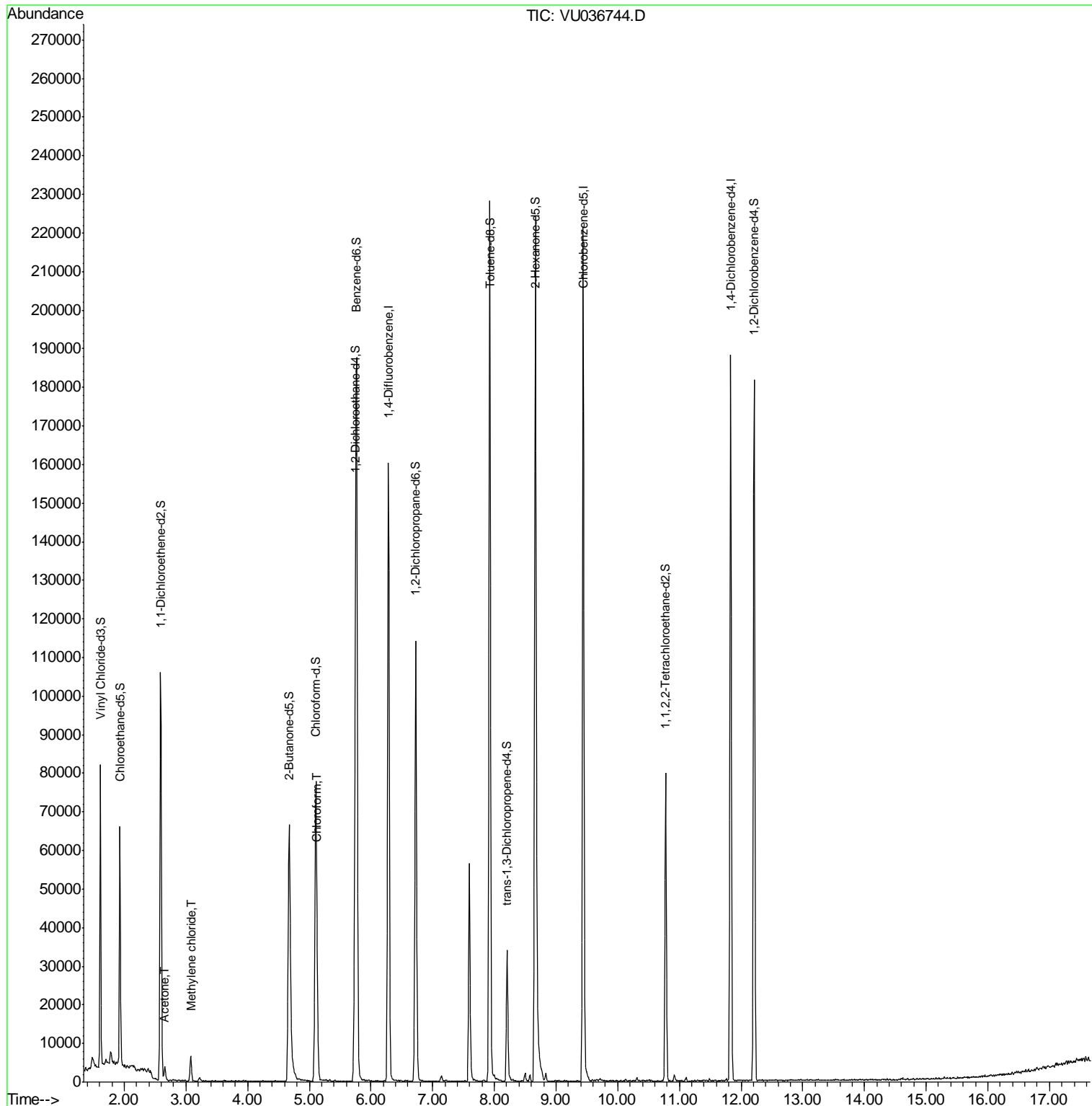
Target Compounds	R.T.	QIon	Response	Conc	Units	Ovalue
13) Acetone	2.66	43	3944	1.354	ug/L	99
16) Methylene chloride	3.08	84	3106	0.240	ug/L	92
25) Chloroform	5.13	83	10738	0.605	ug/L	98

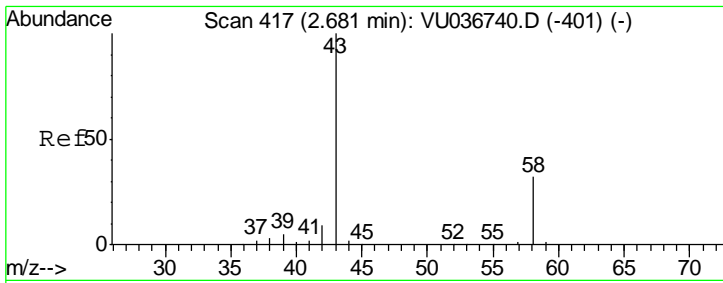
(#) = qualifier out of range (m) = manual integration (+) = signals summed

Data Path : Z:\VOASRV\HPCHEM1\MSVOA U\DATA\VU021220\
 Data File : VU036744.D
 Acq On : 12 Feb 2020 12:04
 Operator : JC/MD
 Sample : L1487-02
 Misc : 25.0mL/MSVOA U/WATER
 ALS Vial : 24 Sample Multiplier: 1

Instrument :
 MSVOA_U
ClientSampled :
 DBCT4

Quant Time: Feb 13 01:27:56 2020
 Quant Method : Z:\VOASRV\HPCHEM1\MSVOA_U\METHOD\SOMUTR021220WMA.M
 Quant Title : TRACE VOA SOM01.0
 QLast Update : Thu Feb 13 00:59:33 2020
 Response via : Initial Calibration

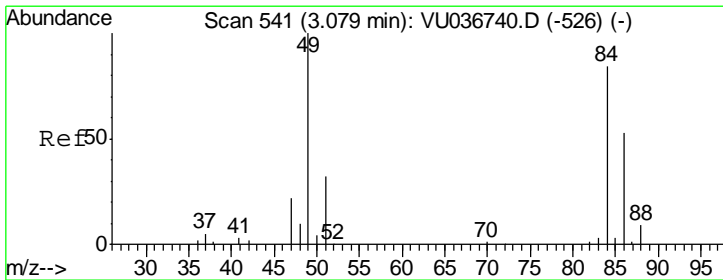
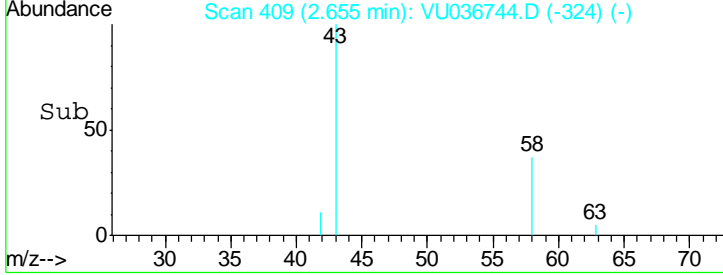
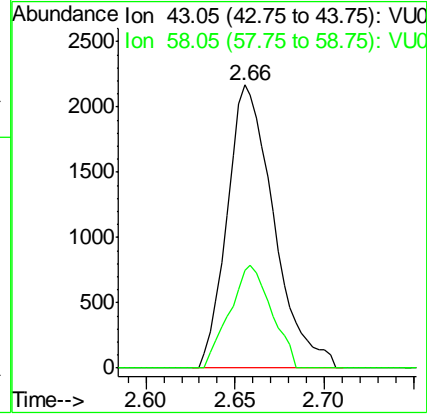
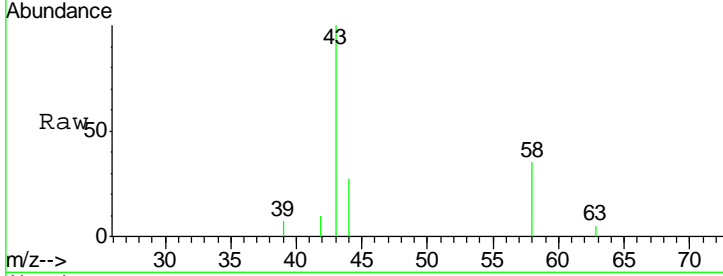




#13
 Acetone
 Concen: 1.354 ug/L
 RT: 2.66 min Scan# 409
 Delta R.T. -0.03 min
 Lab File: VU036744.D
 Acq: 12 Feb 2020 12:04

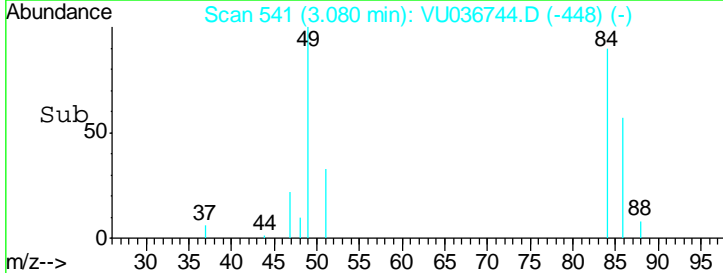
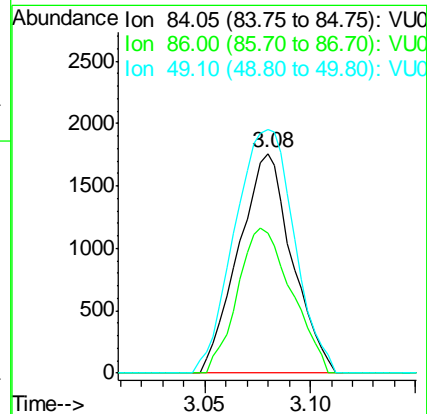
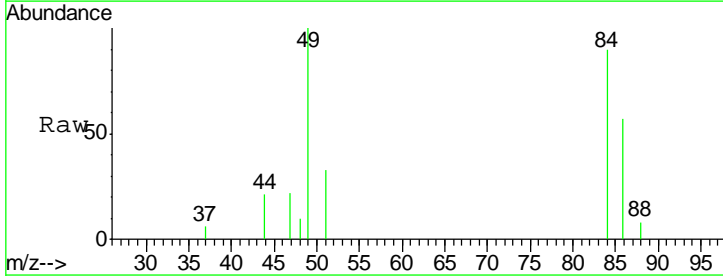
Instrument : MSVOA_U
 ClientSampled : DBCT4

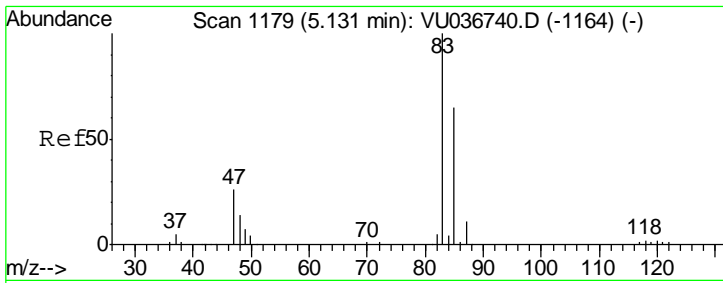
Tgt Ion	43	58	Resp	3944
Ion Ratio	100	32.7	Lower	Upper
			0.0	64.2



#16
 Methylene chloride
 Concen: 0.240 ug/L
 RT: 3.08 min Scan# 541
 Delta R.T. 0.00 min
 Lab File: VU036744.D
 Acq: 12 Feb 2020 12:04

Tgt Ion	84	Resp	3106
Ion Ratio	100	Lower	Upper
86	63.5	44.7	82.9
49	110.9	86.7	160.9





#25
 Chloroform
 Concen: 0.605 ug/L
 RT: 5.13 min Scan# 1179
 Delta R.T. 0.00 min
 Lab File: VU036744.D
 Acq: 12 Feb 2020 12:04

Instrument : MSVOA_U
 ClientSampled : DBCT4

Tot Ion: 83 Resp: 10738

Ion	Ratio	Lower	Upper
83	100		
85	66.0	45.4	84.2

