

Data File : VU029456.D
 Acq On : 14 Feb 2019 14:35
 Operator : JC/SP
 Sample : K1436-16
 Misc : 25.0mL/MSVOA_U/WATER
 ALS Vial : 12 Sample Multiplier: 1

Instrument :
 MSVOA_U
 ClientSampled :
 ESXA9

Quant Time: Feb 15 00:48:16 2019
 Quant Method : Z:\VOASRV\HPCHEM1\MSVOA_U\METHOD\SOMUTR021219WMA.M
 Quant Title : TRACE VOA SOM01.0
 QLast Update : Fri Feb 15 00:42:37 2019
 Response via : Initial Calibration

Internal Standards	R.T.	QIon	Response	Conc	Units	Dev(Min)
1) 1,4-Difluorobenzene	5.88	114	196860	5.00	ug/L	0.00
28) Chlorobenzene-d5	9.09	117	184234	5.00	ug/L	0.00
60) 1,4-Dichlorobenzene-d4	11.48	152	99584	5.00	ug/L	0.00

System Monitoring Compounds

4) Vinyl Chloride-d3	1.40	65	53650	4.06	ug/L	0.00
Spiked Amount	5.000	Range	40 - 130	Recovery	=	81.20%
7) Chloroethane-d5	1.68	69	48715	4.17	ug/L	0.00
Spiked Amount	5.000	Range	65 - 130	Recovery	=	83.40%
11) 1,1-Dichloroethene-d2	2.27	63	89551	3.11	ug/L	0.00
Spiked Amount	5.000	Range	60 - 125	Recovery	=	62.20%
20) 2-Butanone-d5	4.19	46	134666	48.97	ug/L	-0.03
Spiked Amount	50.000	Range	40 - 130	Recovery	=	97.94%
24) Chloroform-d	4.65	84	98761	4.70	ug/L	0.00
Spiked Amount	5.000	Range	70 - 125	Recovery	=	94.00%
26) 1,2-Dichloroethane-d4	5.31	65	51702	4.61	ug/L	0.00
Spiked Amount	5.000	Range	70 - 130	Recovery	=	92.20%
32) Benzene-d6	5.34	84	204910	4.63	ug/L	0.00
Spiked Amount	5.000	Range	70 - 125	Recovery	=	92.60%
36) 1,2-Dichloropropane-d6	6.33	67	61574	4.70	ug/L	0.00
Spiked Amount	5.000	Range	60 - 140	Recovery	=	94.00%
41) Toluene-d8	7.56	98	194193	4.44	ug/L	0.00
Spiked Amount	5.000	Range	70 - 130	Recovery	=	88.80%
43) trans-1,3-Dichloropropene-	7.85	79	24555	4.20	ug/L	0.00
Spiked Amount	5.000	Range	55 - 130	Recovery	=	84.00%
46) 2-Hexanone-d5	8.31	63	135336	50.27	ug/L	0.00
Spiked Amount	50.000	Range	45 - 130	Recovery	=	100.54%
57) 1,1,2,2-Tetrachloroethane-	10.43	84	53633	4.72	ug/L	0.00
Spiked Amount	5.000	Range	65 - 120	Recovery	=	94.40%
64) 1,2-Dichlorobenzene-d4	11.86	152	85886	4.68	ug/L	0.00
Spiked Amount	5.000	Range	80 - 120	Recovery	=	93.60%

Target Compounds

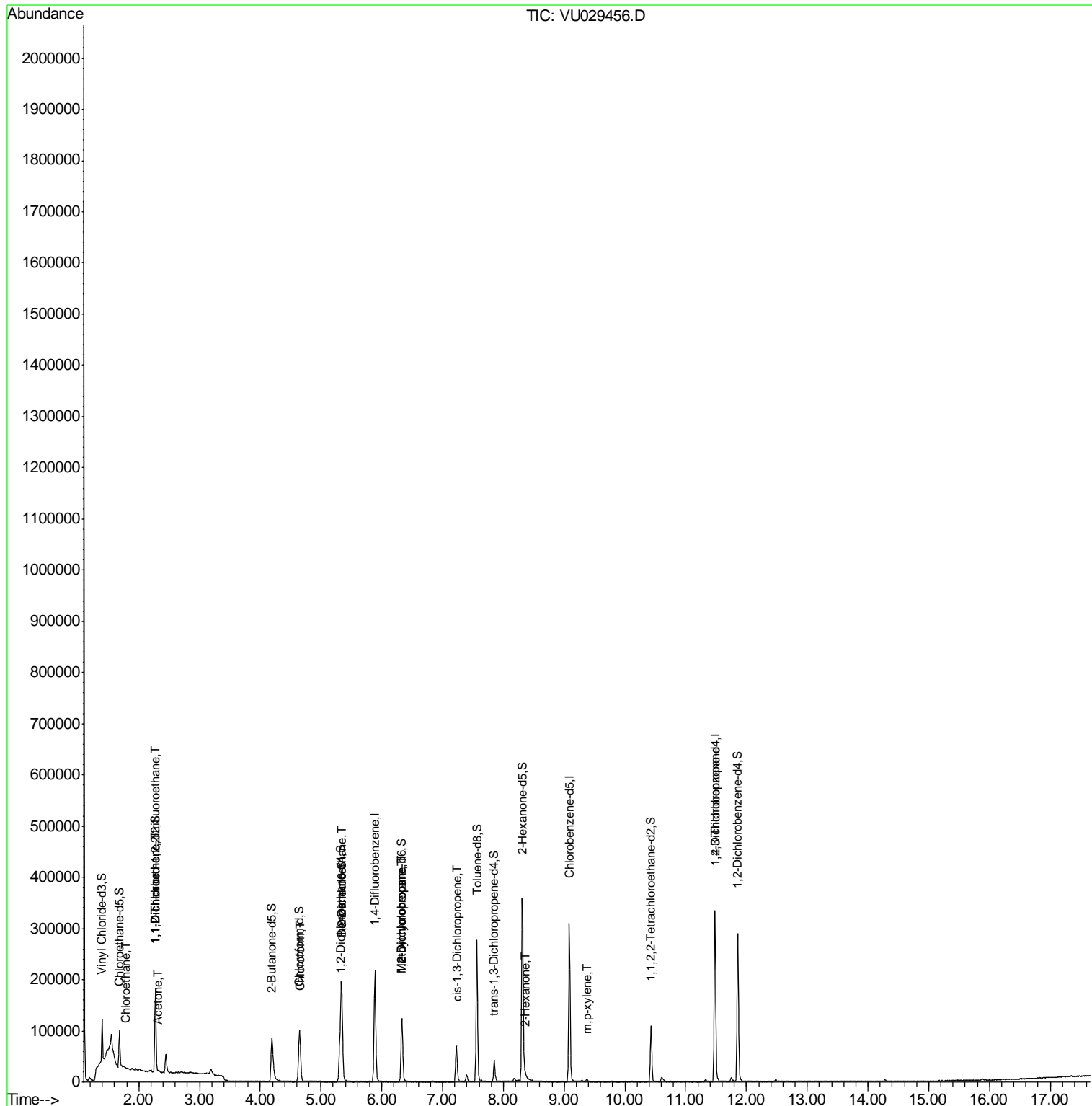
						Qvalue
8) Chloroethane	1.78	64	5210	0.422	ug/L #	52
10) 1,1,2-Trichloro-1,2,2-trif	2.27	101	932	0.054	ug/L #	18
12) 1,1-Dichloroethene	2.28	96	1176	0.073	ug/L #	1
13) Acetone	2.32	43	3477	1.392	ug/L	85
25) Chloroform	4.66	83	1227	0.047	ug/L #	62
27) 1,2-Dichloroethane	5.33	62	1217	0.081	ug/L #	72
35) Methylcyclohexane	6.33	83	15063	0.587	ug/L #	21
37) 1,2-Dichloropropane	6.33	63	6776	0.499	ug/L #	87
39) cis-1,3-Dichloropropene	7.23	75	1880	0.088	ug/L #	61
48) 2-Hexanone	8.37	43	2173	0.381	ug/L	96
53) m,p-xylene	9.38	106	1680	0.061	ug/L	86
59) 1,2,3-Trichloropropane	11.48	75	10270	1.179	ug/L	98

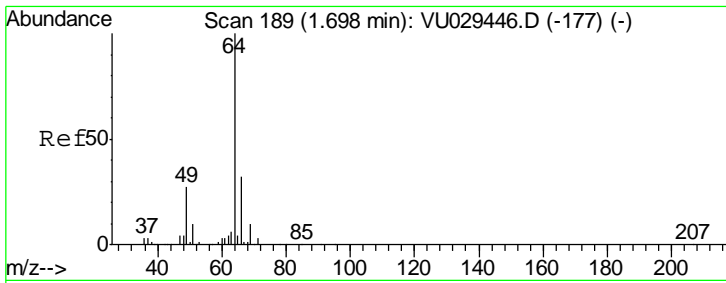
(#) = qualifier out of range (m) = manual integration (+) = signals summed

Data File : VU029456.D
Acq On : 14 Feb 2019 14:35
Operator : JC/SP
Sample : K1436-16
Misc : 25.0mL/MSVOA_U/WATER
ALS Vial : 12 Sample Multiplier: 1

Instrument :
MSVOA_U
ClientSampleId :
ESXA9

Quant Time: Feb 15 00:48:16 2019
Quant Method : Z:\VOASRV\HPCHEM1\MSVOA_U\METHOD\SOMUTR021219WMA.M
Quant Title : TRACE VOA SOM01.0
QLast Update : Fri Feb 15 00:42:37 2019
Response via : Initial Calibration

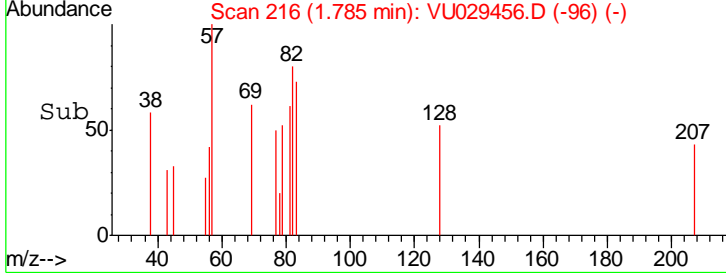
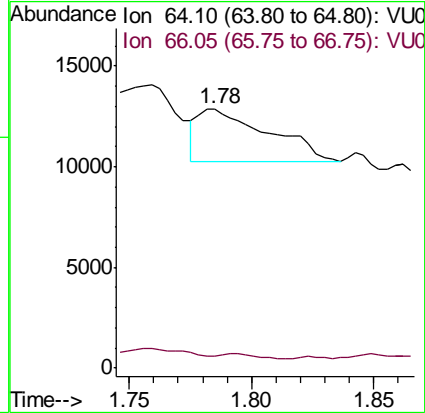
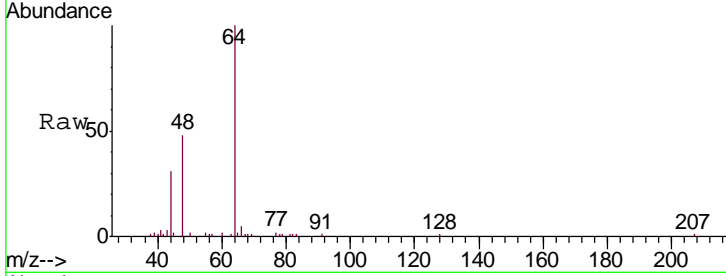




#8
 Chloroethane
 Concen: 0.422 ug/L
 RT: 1.78 min Scan# 216
 Delta R.T. 0.09 min
 Lab File: VU029456.D
 Acq: 14 Feb 2019 14:35

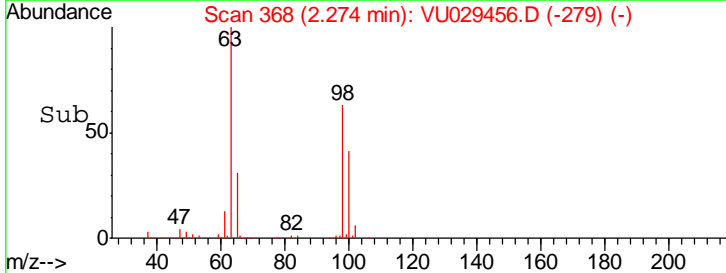
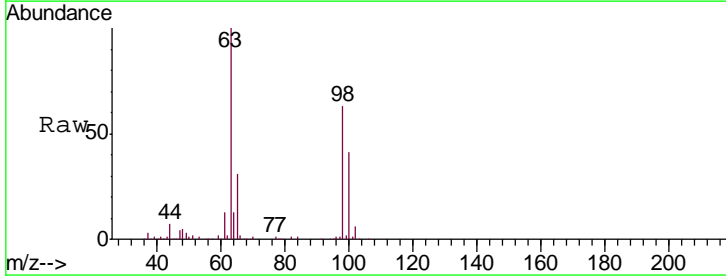
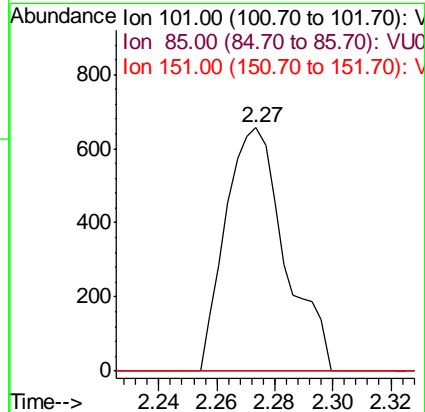
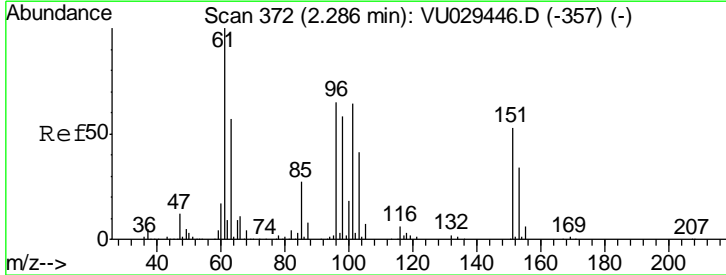
Instrument : MSVOA_U
 ClientSampled : ESXA9

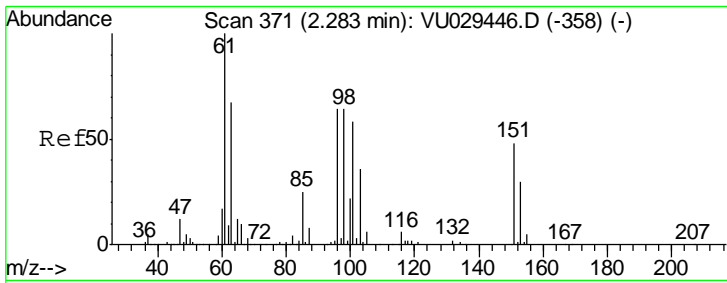
Tgt Ion: 64 Resp: 5210
 Ion Ratio Lower Upper
 64 100
 66 4.7 22.0 40.8#



#10
 1,1,2-Trichloro-1,2,2-trifluoroethane
 Concen: 0.054 ug/L
 RT: 2.27 min Scan# 368
 Delta R.T. -0.01 min
 Lab File: VU029456.D
 Acq: 14 Feb 2019 14:35

Tgt Ion: 101 Resp: 932
 Ion Ratio Lower Upper
 101 100
 85 4.3 35.1 52.7#
 151 0.0 67.0 100.6#

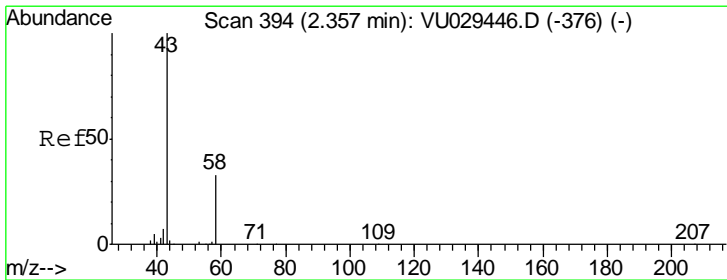
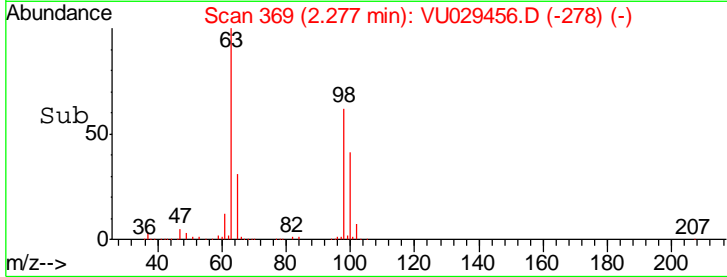
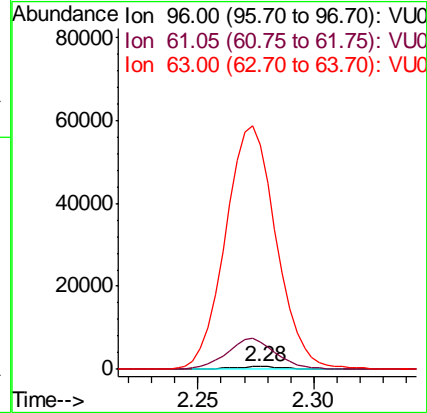
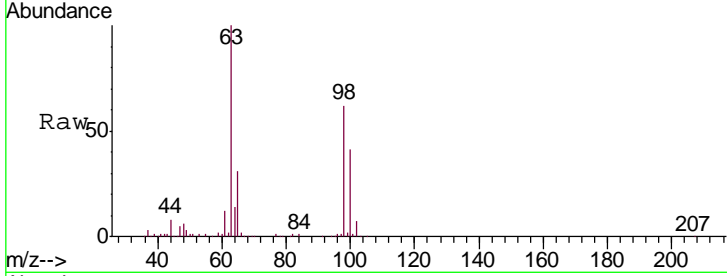




#12
 1,1-Dichloroethene
 Concen: 0.073 ug/L
 RT: 2.28 min Scan# 369
 Delta R.T. -0.01 min
 Lab File: VU029456.D
 Acq: 14 Feb 2019 14:35

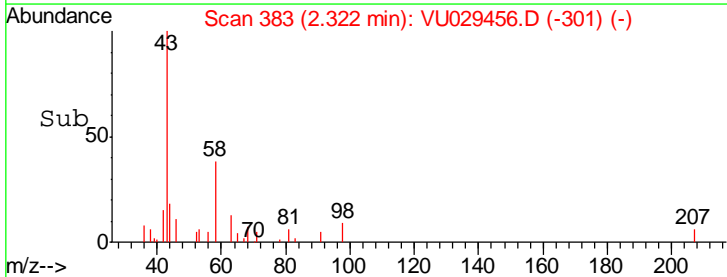
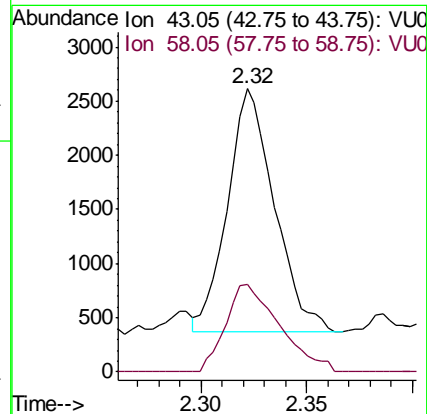
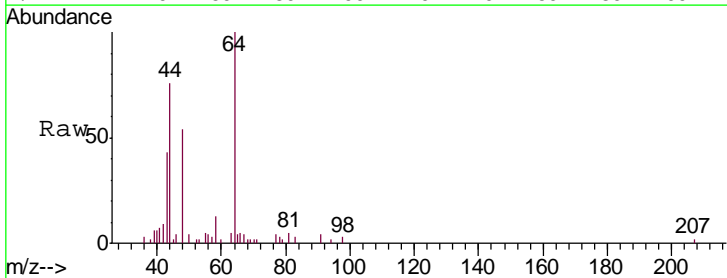
Instrument : MSVOA_U
 ClientSampled : ESXA9

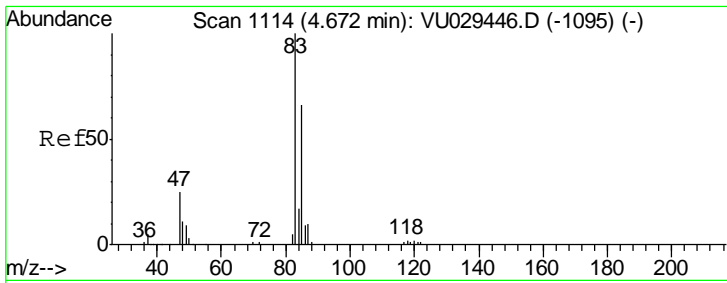
Tgt Ion	Resp	Lower	Upper
96	1176		
96	100		
61	975.6	115.1	213.7#
63	7904.1	83.5	155.1#



#13
 Acetone
 Concen: 1.392 ug/L
 RT: 2.32 min Scan# 383
 Delta R.T. -0.04 min
 Lab File: VU029456.D
 Acq: 14 Feb 2019 14:35

Tgt Ion	Resp	Lower	Upper
43	3477		
43	100		
58	41.2	0.0	65.0

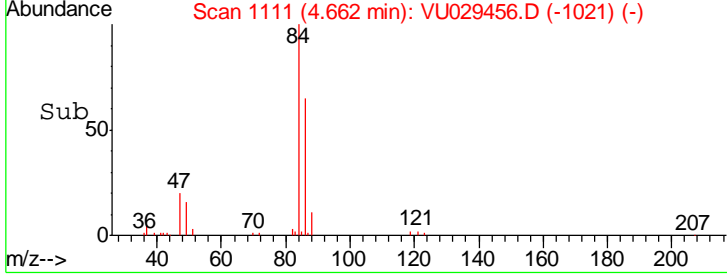
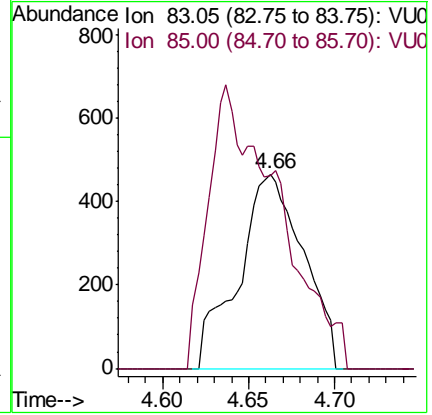
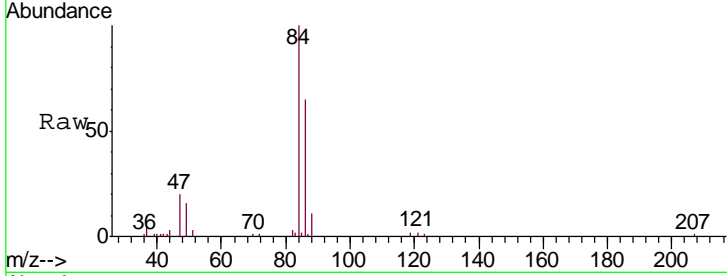




#25
 Chloroform
 Concen: 0.047 ug/L
 RT: 4.66 min Scan# 1111
 Delta R.T. -0.01 min
 Lab File: VU029456.D
 Acq: 14 Feb 2019 14:35

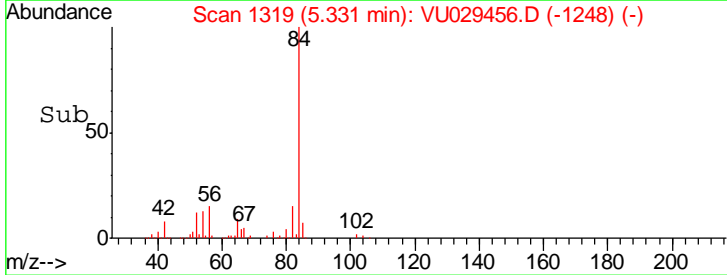
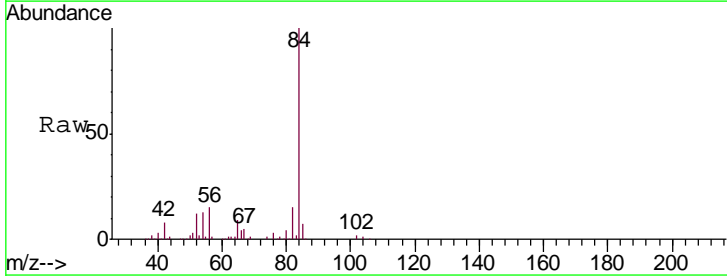
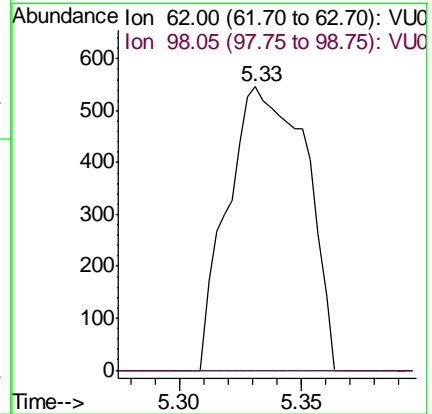
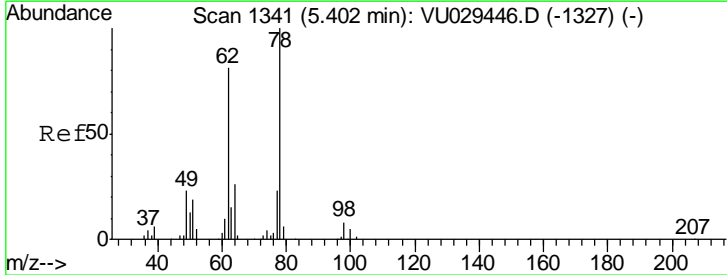
Instrument : MSVOA_U
 ClientSampled : ESXA9

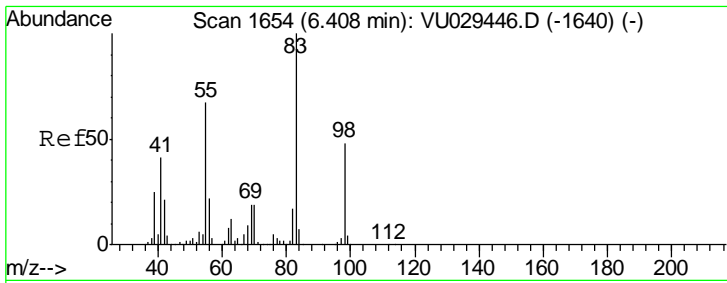
Tgt Ion: 83 Resp: 1227
 Ion Ratio Lower Upper
 83 100
 85 98.9 47.8 88.8#



#27
 1,2-Dichloroethane
 Concen: 0.081 ug/L
 RT: 5.33 min Scan# 1319
 Delta R.T. -0.07 min
 Lab File: VU029456.D
 Acq: 14 Feb 2019 14:35

Tgt Ion: 62 Resp: 1217
 Ion Ratio Lower Upper
 62 100
 98 0.0 8.4 12.6#

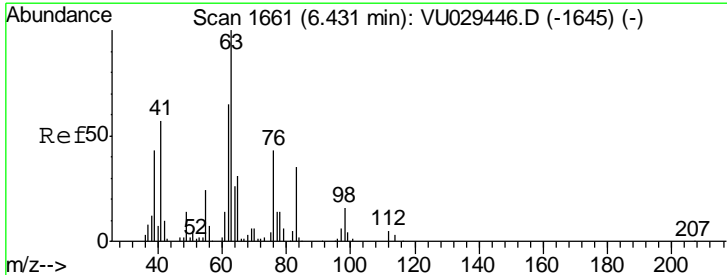
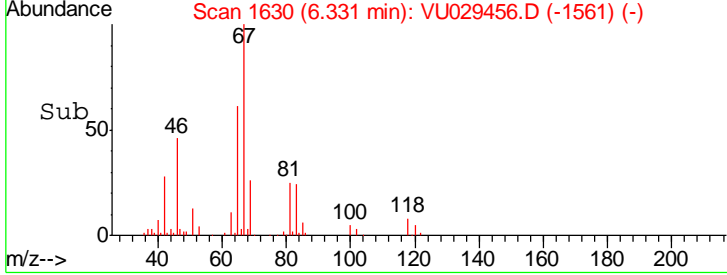
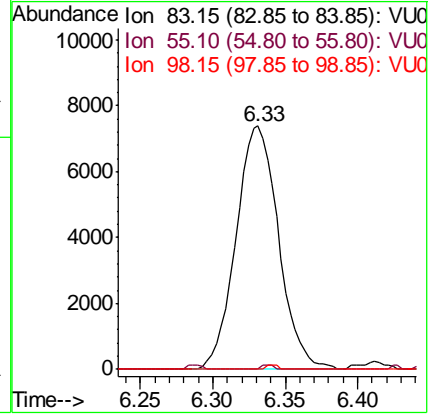
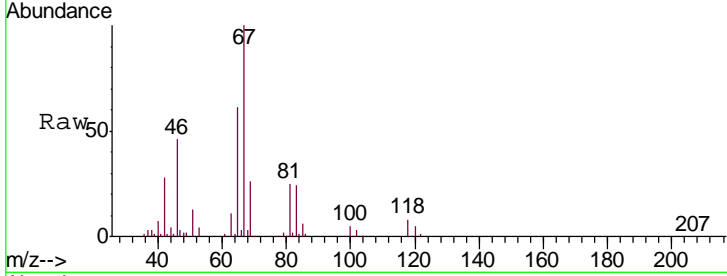




#35
 Methylcyclohexane
 Concen: 0.587 ug/L
 RT: 6.33 min Scan# 1630
 Delta R.T. -0.08 min
 Lab File: VU029456.D
 Acq: 14 Feb 2019 14:35

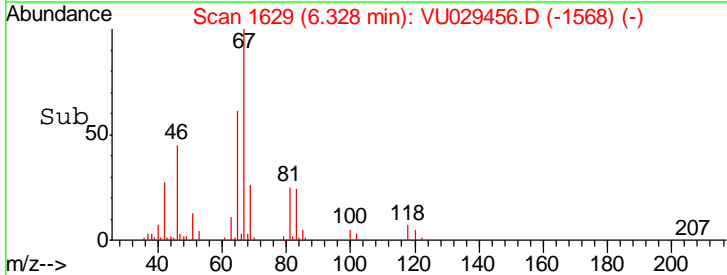
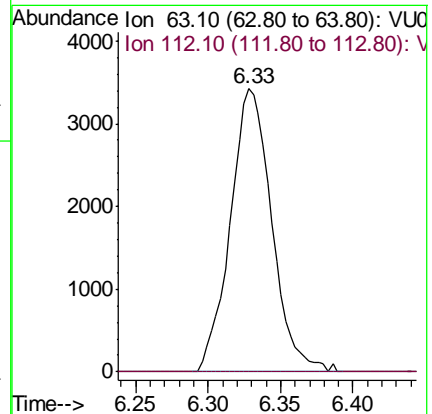
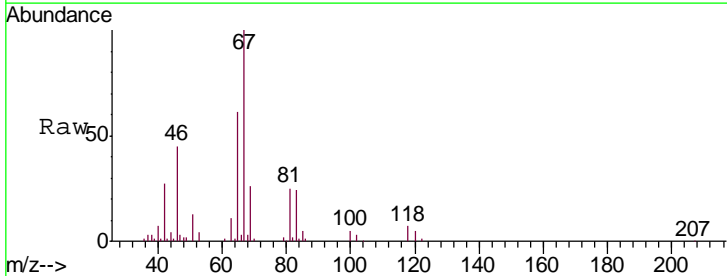
Instrument : MSVOA_U
 ClientSampled : ESXA9

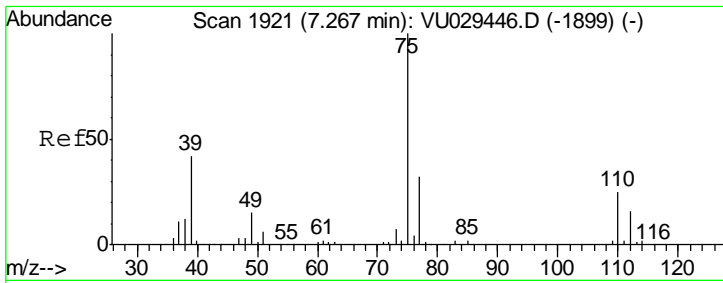
Tgt Ion	Resp	Lower	Upper
83	15063		
55	0.5	55.9	83.9#
98	0.5	38.6	57.8#



#37
 1,2-Dichloropropane
 Concen: 0.499 ug/L
 RT: 6.33 min Scan# 1629
 Delta R.T. -0.10 min
 Lab File: VU029456.D
 Acq: 14 Feb 2019 14:35

Tgt Ion	Resp	Lower	Upper
63	6776		
112	0.0	3.5	5.3#



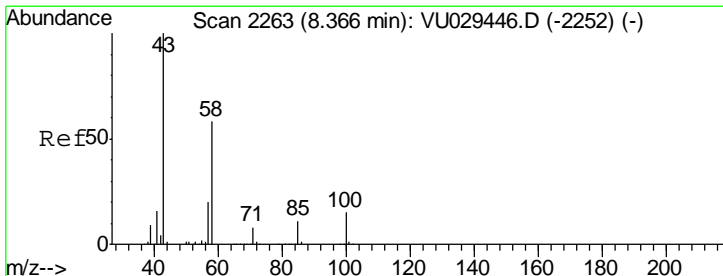
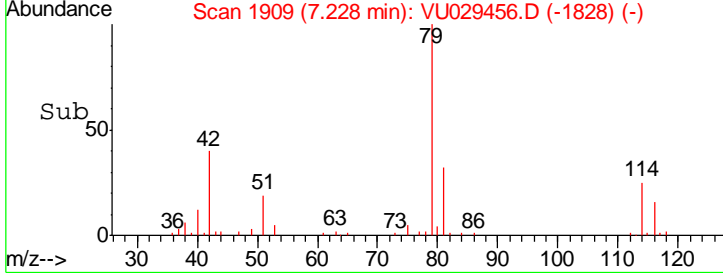
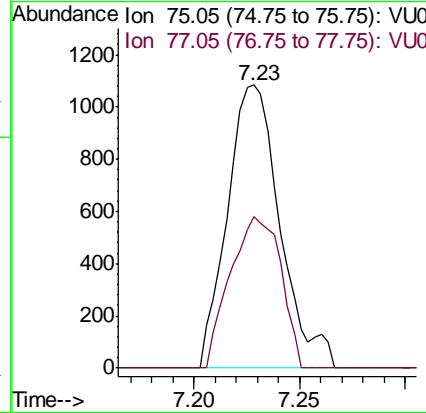
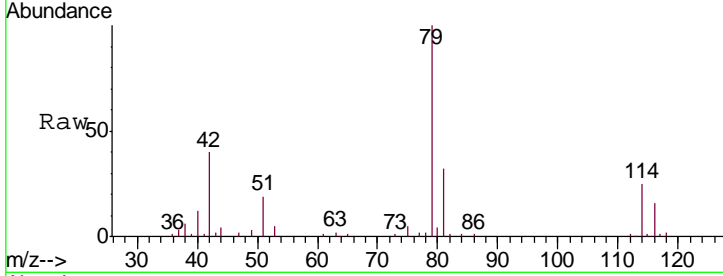


#39
 cis-1,3-Dichloropropene
 Concen: 0.088 ug/L
 RT: 7.23 min Scan# 1909
 Delta R.T. -0.04 min
 Lab File: VU029456.D
 Acq: 14 Feb 2019 14:35

Instrument : MSVOA_U
 ClientSampled : ESXA9

Tgt Ion: 75 Resp: 1880

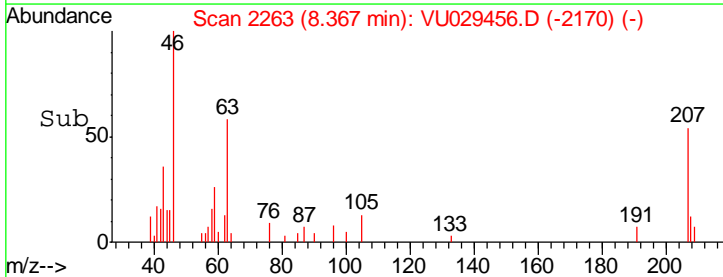
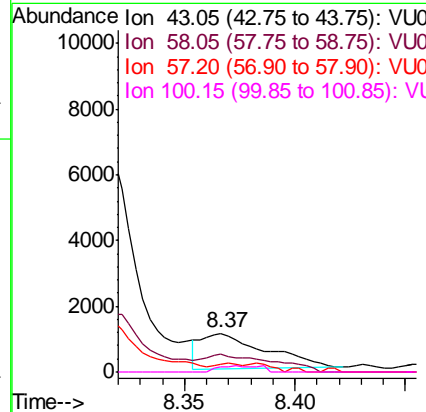
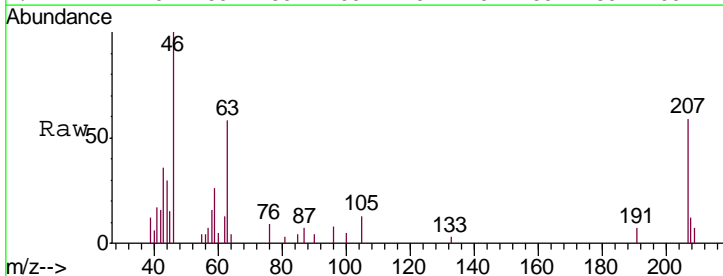
Ion	Ratio	Lower	Upper
75	100		
77	53.6	22.3	41.3#

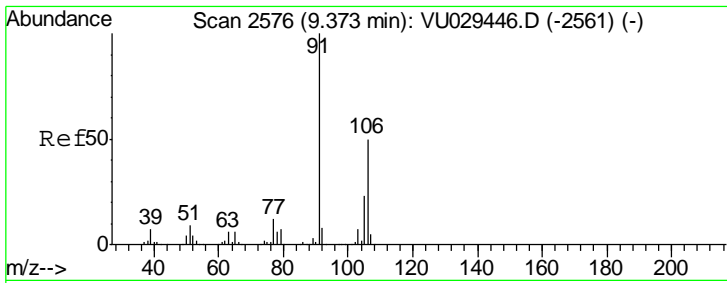


#48
 2-Hexanone
 Concen: 0.381 ug/L
 RT: 8.37 min Scan# 2263
 Delta R.T. 0.00 min
 Lab File: VU029456.D
 Acq: 14 Feb 2019 14:35

Tgt Ion: 43 Resp: 2173

Ion	Ratio	Lower	Upper
43	100		
58	54.0	45.7	68.5
57	22.0	16.4	24.6
100	11.6	11.1	16.7

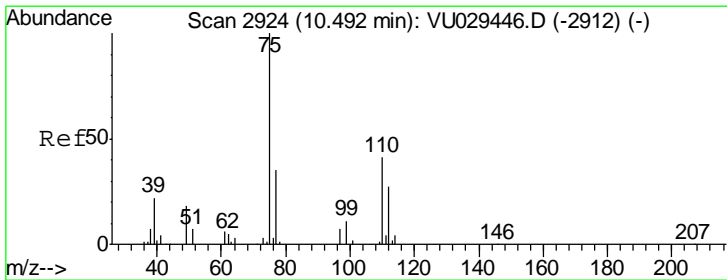
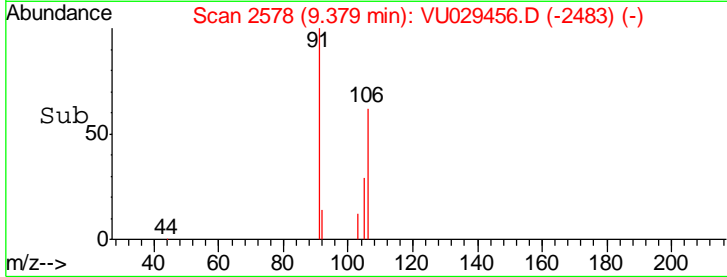
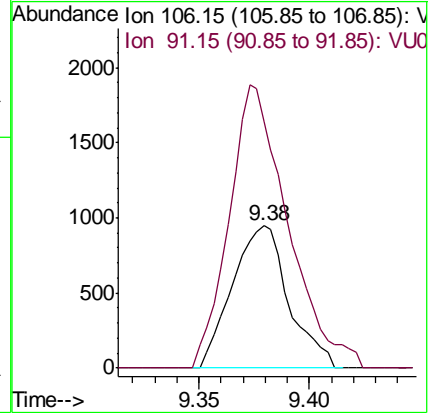
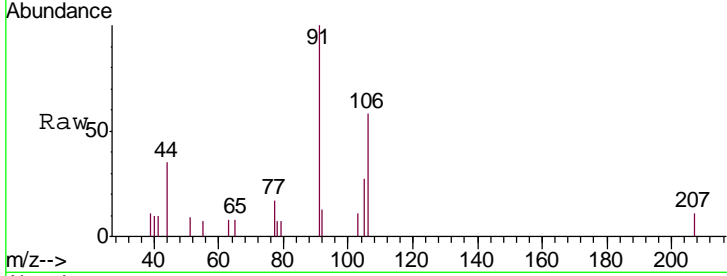




#53
 m,p-xylene
 Concen: 0.061 ug/L
 RT: 9.38 min Scan# 2578
 Delta R.T. 0.01 min
 Lab File: VU029456.D
 Acq: 14 Feb 2019 14:35

Instrument :
 MSVOA_U
 ClientSampled :
 ESXA9

Tgt Ion:106 Resp: 1680
 Ion Ratio Lower Upper
 106 100
 91 173.4 135.7 251.9



#59
 1,2,3-Trichloropropane
 Concen: 1.179 ug/L
 RT: 11.48 min Scan# 3232
 Delta R.T. 0.99 min
 Lab File: VU029456.D
 Acq: 14 Feb 2019 14:35

Tgt Ion: 75 Resp: 10270
 Ion Ratio Lower Upper
 75 100
 77 36.3 28.2 42.2

