

Data Path : Z:\VOASRV\HPCHEM1\MSVOA U\DATA\VU021619\
 Data File : VU029507.D
 Acq On : 15 Feb 2019 19:43
 Operator : JC/SP
 Sample : K1438-18DL 4X
 Misc : 25.0mL/MSVOA U/WATER
 ALS Vial : 10 Sample Multiplier: 1

Instrument :
 MSVOA_U
 ClientSampled :
 ESXEODL

Integration Parameters: rteint.p
 Integrator: RTE
 Smoothing : ON
 Sampling : 1
 Start Thrs: 0.1
 Stop Thrs : 0

Filtering: 5
 Min Area: 3 % of largest Peak
 Max Peaks: 100
 Peak Location: TOP

If leading or trailing edge < 100 prefer < Baseline drop else tangent >
 Peak separation: 5

Method : Z:\VOASRV\HPCHEM1\MSVOA_U\METHOD\SOMUTR021219WMA.M
 Title : TRACE VOA SOM01.0

Signal : TIC

peak #	R.T. min	first scan	max scan	last scan	PK TY	peak height	corr. area	corr. % max.	% of total
1	1.183	22	29	47	rBV	1920668	1747278	100.00%	18.729%
2	1.299	55	65	86	rBV	413947	412675	23.62%	4.423%
3	1.399	88	96	107	rBV2	811183	846088	48.42%	9.069%
4	1.679	177	183	198	rVB	93176	123308	7.06%	1.322%
5	1.756	200	207	219	rVB	120277	158575	9.08%	1.700%
6	1.945	258	266	282	rVB	81725	112806	6.46%	1.209%
7	2.273	358	368	382	rBV	181101	277512	15.88%	2.975%
8	2.701	493	501	507	rBV2	17707	30041	1.72%	0.322%
9	2.788	521	528	540	rVB2	30117	53957	3.09%	0.578%
10	2.981	578	588	601	rVB5	21345	43899	2.51%	0.471%
11	4.087	913	932	952	rVB3	19514	53896	3.08%	0.578%
12	4.222	954	974	1000	rBV4	204420	605832	34.67%	6.494%
13	4.646	1088	1106	1129	rBV2	98152	239760	13.72%	2.570%
14	4.987	1197	1212	1228	rBV3	25704	61514	3.52%	0.659%
15	5.334	1299	1320	1349	rVB2	211767	578350	33.10%	6.199%
16	5.884	1474	1491	1513	rBV	208257	408505	23.38%	4.379%
17	6.328	1616	1629	1644	rBV	132181	271032	15.51%	2.905%
18	6.408	1645	1654	1669	rVB3	21005	44788	2.56%	0.480%
19	7.228	1896	1909	1933	rBV	75546	140129	8.02%	1.502%
20	7.563	1997	2013	2032	rBV	315116	548483	31.39%	5.879%
21	7.852	2090	2103	2116	rBV2	43827	79826	4.57%	0.856%
22	8.315	2235	2247	2284	rBV	369988	672711	38.50%	7.211%
23	9.087	2475	2487	2509	rBV	311045	516281	29.55%	5.534%
24	10.431	2893	2905	2923	rBV	117206	190151	10.88%	2.038%
25	10.607	2942	2960	2974	rBV2	11498	20588	1.18%	0.221%
26	11.482	3220	3232	3259	rBV	338742	552374	31.61%	5.921%
27	11.858	3336	3349	3371	rBV	322266	538839	30.84%	5.776%

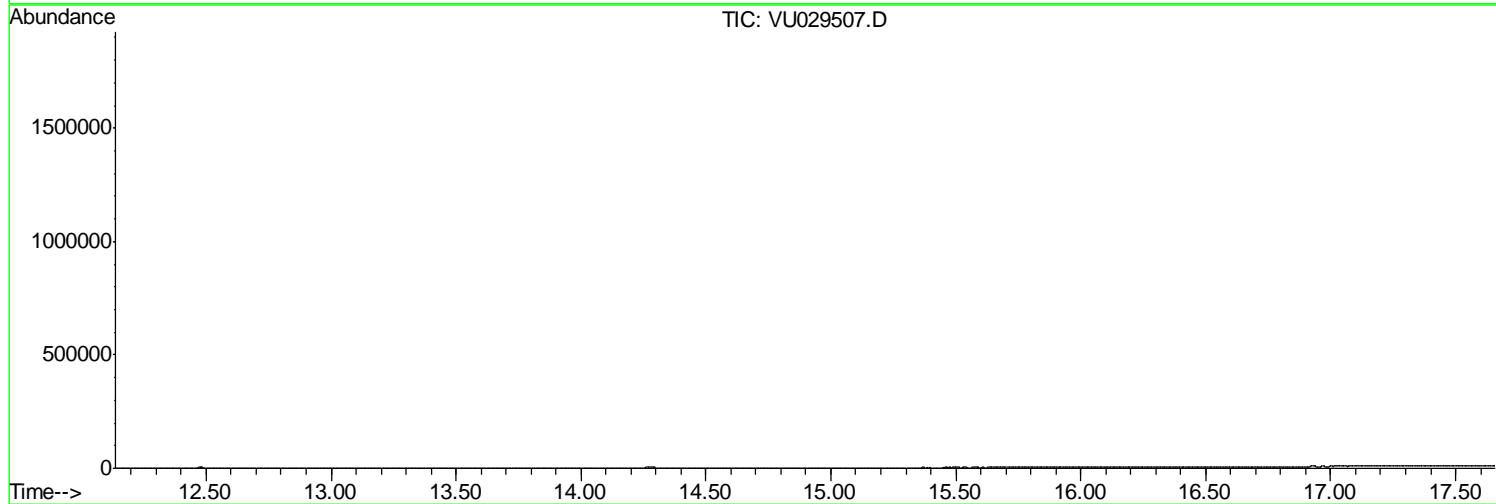
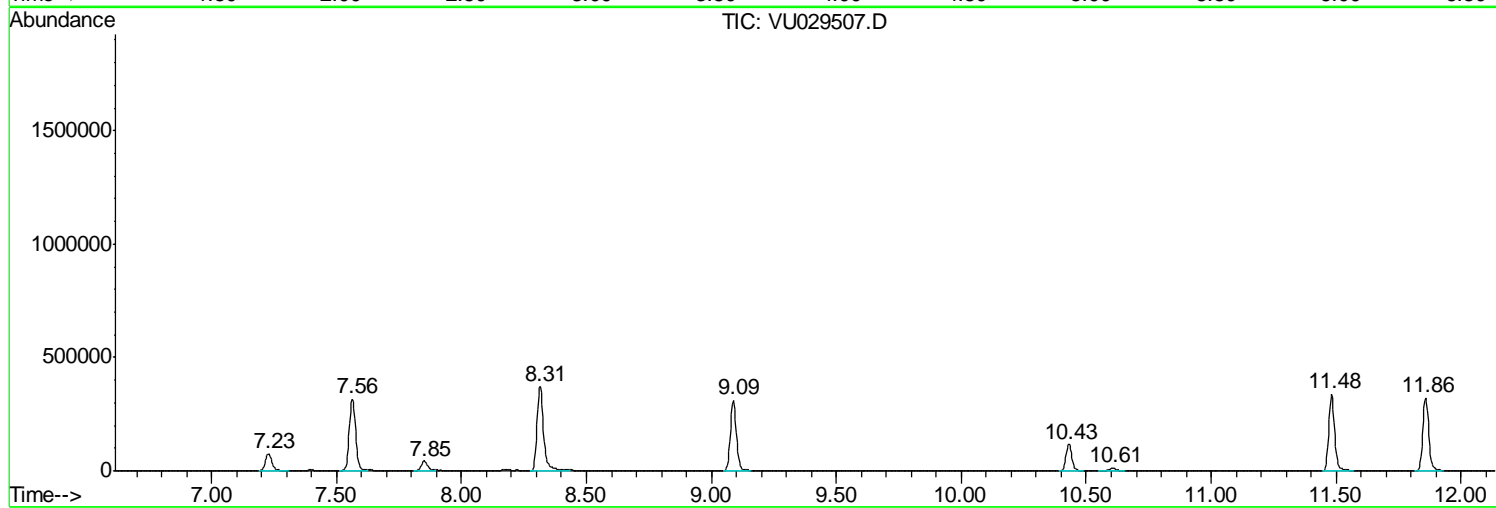
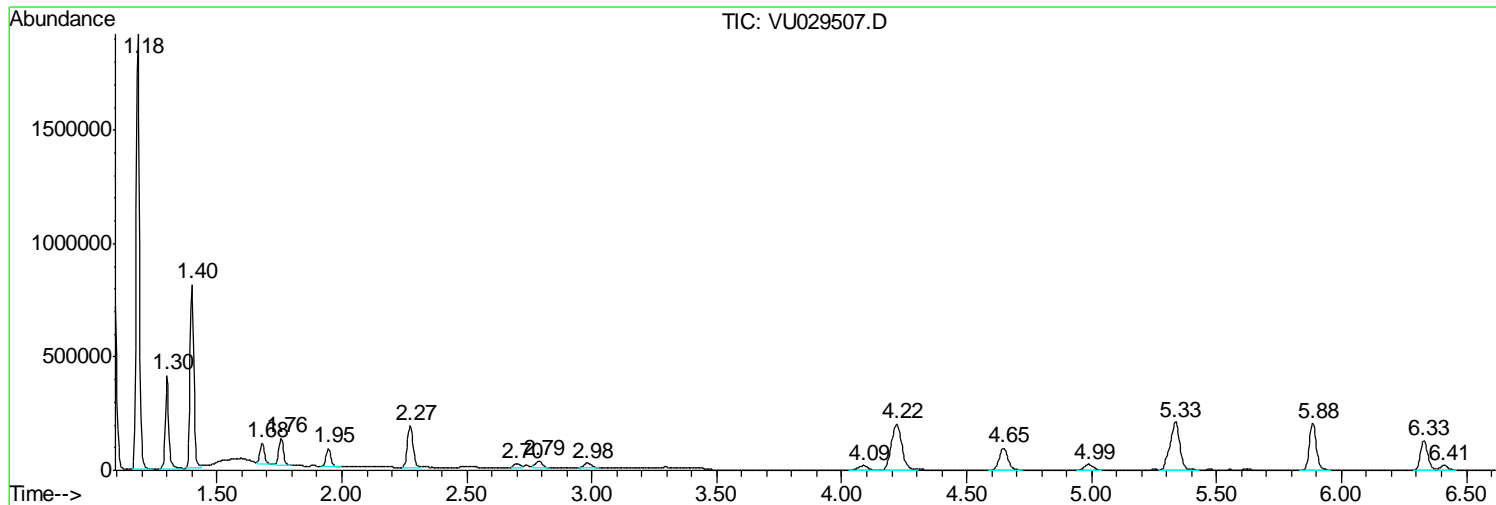
Sum of corrected areas: 9329198

Data Path : Z:\VOASRV\HPCHEM1\MSVOA U\DATA\VU021619\
Data File : VU029507.D
Acq On : 15 Feb 2019 19:43
Operator : JC/SP
Sample : K1438-18DL 4X
Misc : 25.0mL/MSVOA U/WATER
ALS Vial : 10 Sample Multiplier: 1

Instrument :
MSVOA_U
ClientSampleId :
ESXE0DL

Quant Method : Z:\VOASRV\HPCHEM1\MSVOA_U\METHOD\SOMUTR021219WMA.M
Quant Title : TRACE VOA SOM01.0

TIC Library : C:\DATABASE\NIST11.L
TIC Integration Parameters: LSCINT.P



Data Path : Z:\VOASRV\HPCHEM1\MSVOA U\DATA\VU021619\
 Data File : VU029507.D
 Acq On : 15 Feb 2019 19:43
 Operator : JC/SP
 Sample : K1438-18DL 4X
 Misc : 25.0mL/MSVOA U/WATER
 ALS Vial : 10 Sample Multiplier: 1

Instrument :
 MSVOA_U
 ClientSampleID :
 ESXEODL

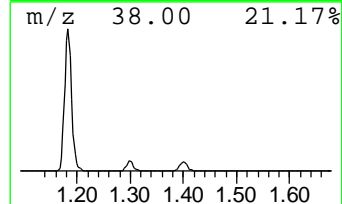
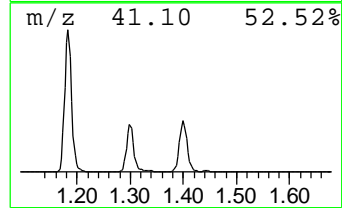
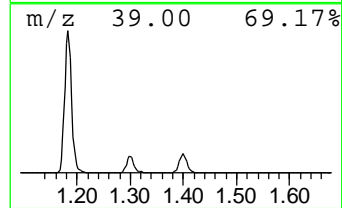
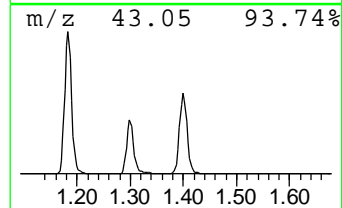
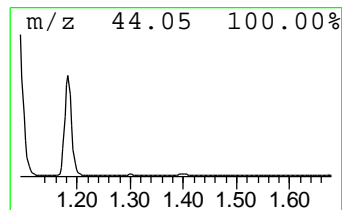
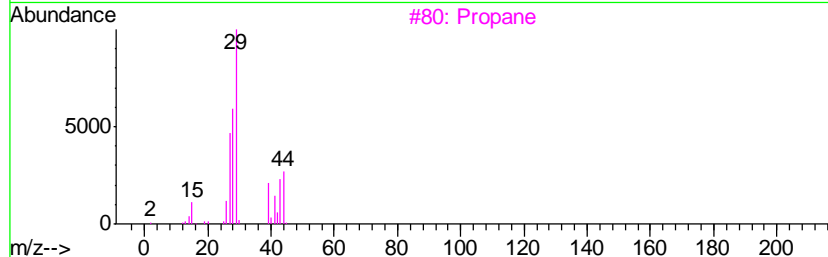
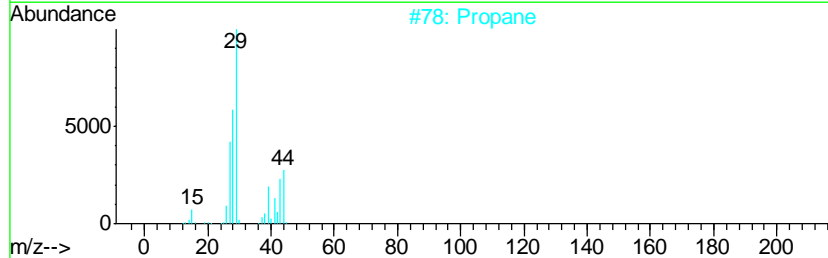
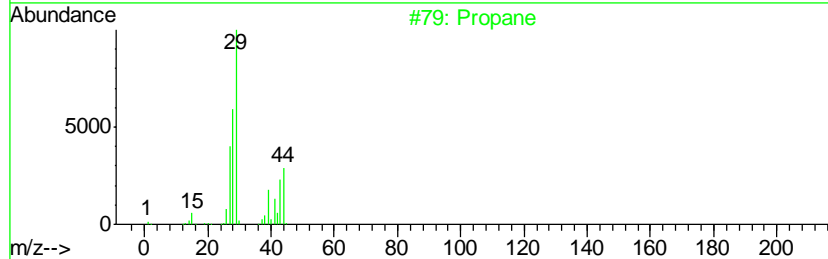
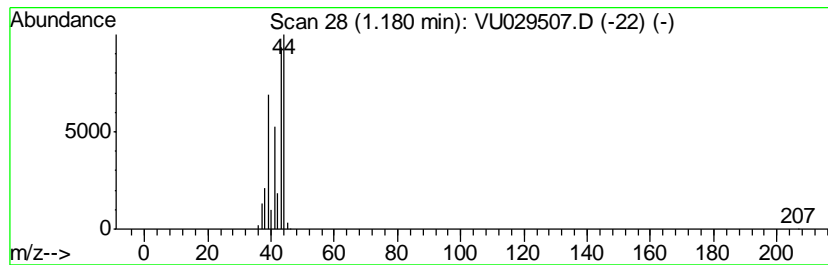
Quant Method : Z:\VOASRV\HPCHEM1\MSVOA_U\METHOD\SOMUTR021219WMA.M
 Quant Title : TRACE VOA SOM01.0

TIC Library : C:\DATABASE\NIST11.L
 TIC Integration Parameters: LSCINT.P

 Peak Number 1 (DEL) Alkane: Straight-Chai... Concentration Rank 1

R.T.	EstConc	Area	Relative to ISTD	R.T.
1.18	21.39 ug/L	1747280	1,4-Difluorobenzene	5.88

Hit#	of	Tentative ID	MW	MolForm	CAS#	Qual
1	5	Propane	44	C3H8	000074-98-6	83
2		Propane	44	C3H8	000074-98-6	83
3		Propane	44	C3H8	000074-98-6	9
4		Propene	42	C3H6	000115-07-1	9
5		Acetaldehyde	44	C2H4O	000075-07-0	5



Data Path : Z:\VOASRV\HPCHEM1\MSVOA U\DATA\VU021619\
 Data File : VU029507.D
 Acq On : 15 Feb 2019 19:43
 Operator : JC/SP
 Sample : K1438-18DL 4X
 Misc : 25.0mL/MSVOA U/WATER
 ALS Vial : 10 Sample Multiplier: 1

Instrument :
 MSVOA_U
 ClientSampleID :
 ESXEODL

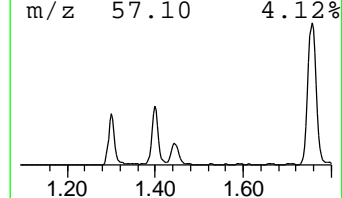
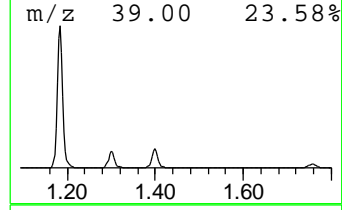
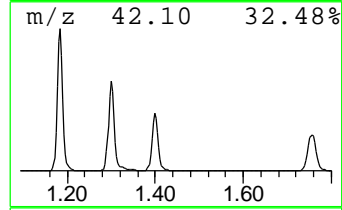
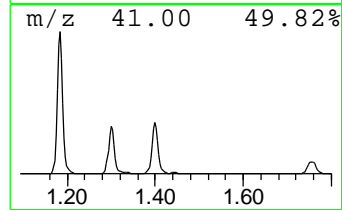
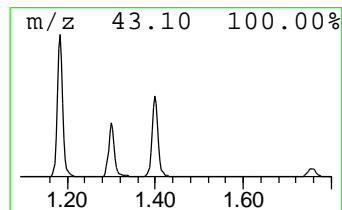
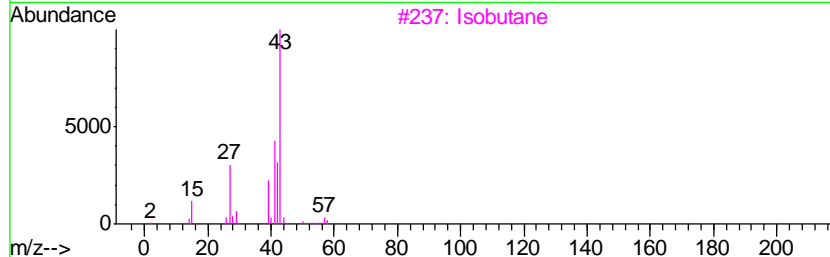
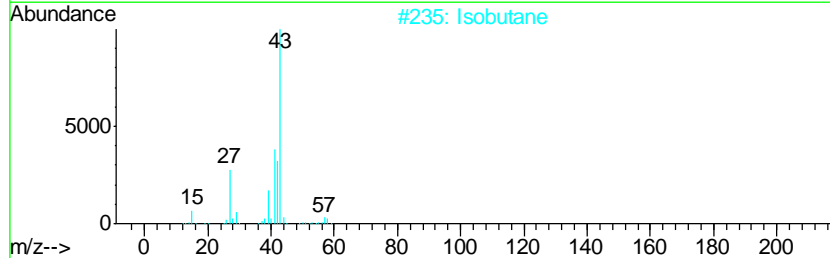
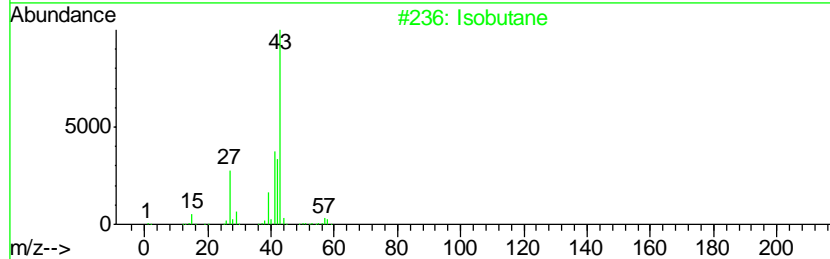
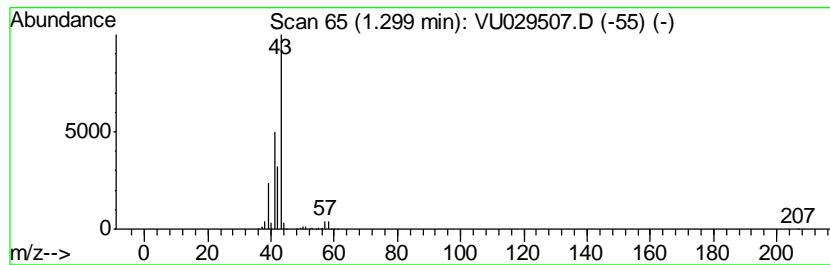
Quant Method : Z:\VOASRV\HPCHEM1\MSVOA_U\METHOD\SOMUTR021219WMA.M
 Quant Title : TRACE VOA SOM01.0

TIC Library : C:\DATABASE\NIST11.L
 TIC Integration Parameters: LSCINT.P

 Peak Number 2 (DEL) Alkane: Straight-Chai... Concentration Rank 2

R.T.	EstConc	Area	Relative to ISTD	R.T.
1.30	5.05 ug/L	412675	1,4-Difluorobenzene	5.88

Hit#	of	Tentative ID	MW	MolForm	CAS#	Qual
1	5	Isobutane	58	C4H10	000075-28-5	80
2		Isobutane	58	C4H10	000075-28-5	72
3		Isobutane	58	C4H10	000075-28-5	64
4		Isobutane	58	C4H10	000075-28-5	59
5		Propane, 2-nitro-	89	C3H7NO2	000079-46-9	4



Data Path : Z:\VOASRV\HPCHEM1\MSVOA U\DATA\VU021619\
 Data File : VU029507.D
 Acq On : 15 Feb 2019 19:43
 Operator : JC/SP
 Sample : K1438-18DL 4X
 Misc : 25.0mL/MSVOA U/WATER
 ALS Vial : 10 Sample Multiplier: 1

Instrument :
 MSVOA_U
 ClientSampleID :
 ESXE0DL

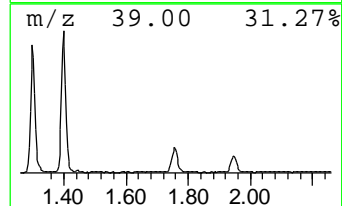
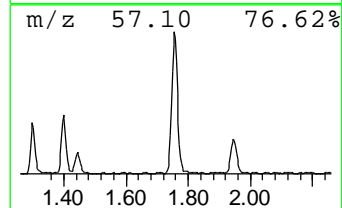
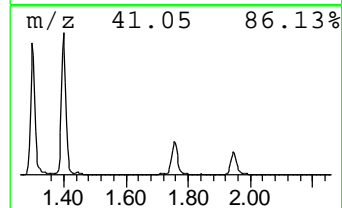
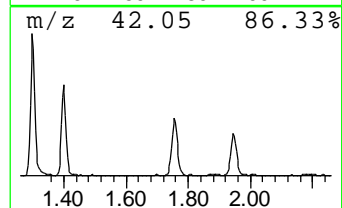
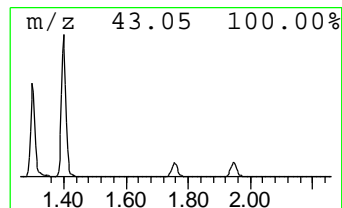
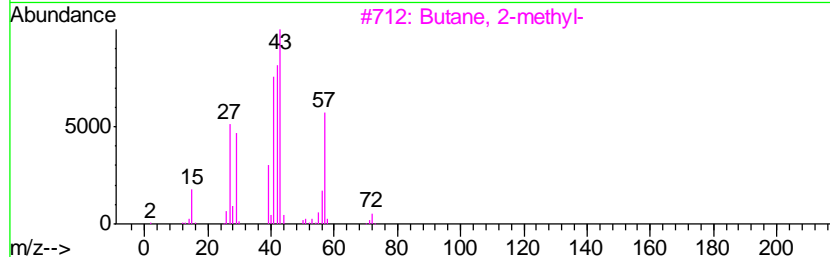
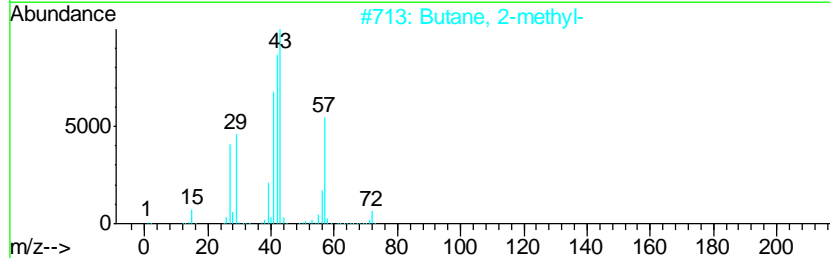
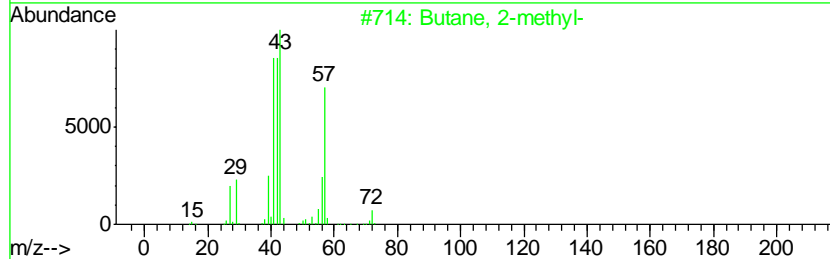
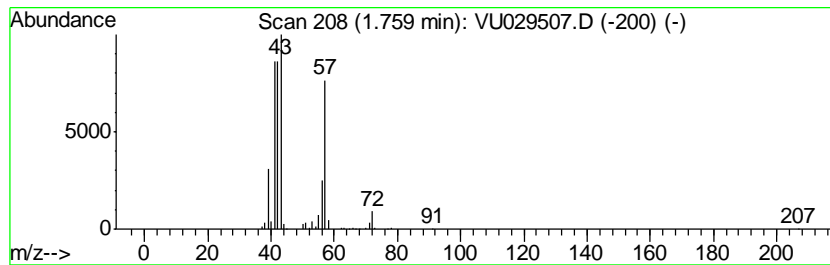
Quant Method : Z:\VOASRV\HPCHEM1\MSVOA_U\METHOD\SOMUTR021219WMA.M
 Quant Title : TRACE VOA SOM01.0

TIC Library : C:\DATABASE\NIST11.L
 TIC Integration Parameters: LSCINT.P

 Peak Number 3 (DEL) Alkane: Straight-Chai... Concentration Rank 3

R.T.	EstConc	Area	Relative to ISTD	R.T.
1.76	1.94 ug/L	158575	1,4-Difluorobenzene	5.88

Hit#	of	Tentative ID	MW	MolForm	CAS#	Qual
1	5	Butane, 2-methyl-	72	C5H12	000078-78-4	91
2		Butane, 2-methyl-	72	C5H12	000078-78-4	91
3		Butane, 2-methyl-	72	C5H12	000078-78-4	90
4		3-Buten-1-ol	72	C4H8O	000627-27-0	43
5		Pentane	72	C5H12	000109-66-0	38



Data Path : Z:\VOASRV\HPCHEM1\MSVOA U\DATA\VU021619\
 Data File : VU029507.D
 Acq On : 15 Feb 2019 19:43
 Operator : JC/SP
 Sample : K1438-18DL 4X
 Misc : 25.0mL/MSVOA U/WATER
 ALS Vial : 10 Sample Multiplier: 1

Instrument :
 MSVOA_U
 ClientSampleID :
 ESXE0DL

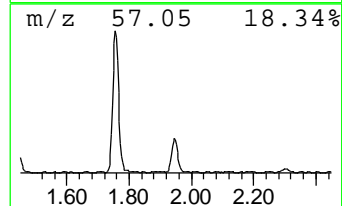
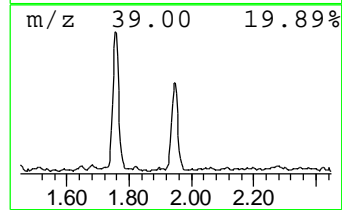
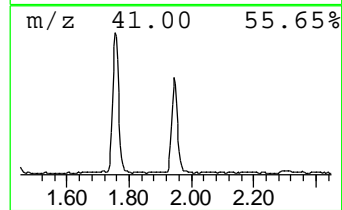
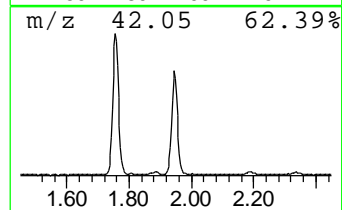
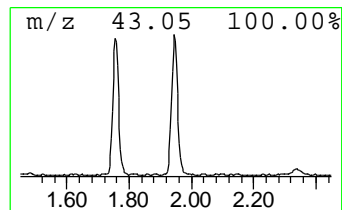
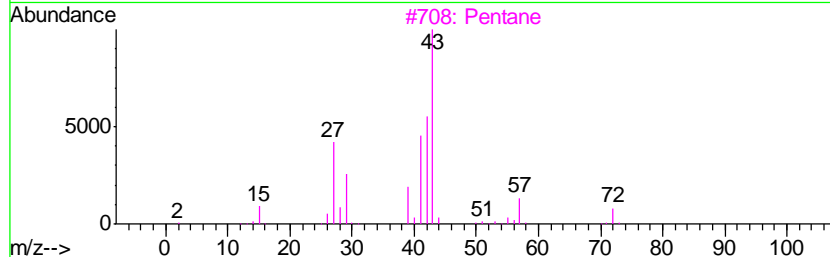
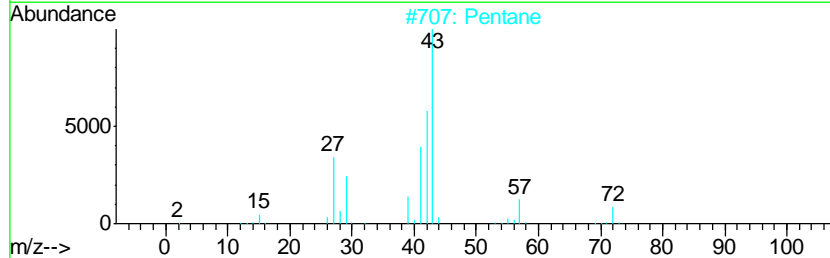
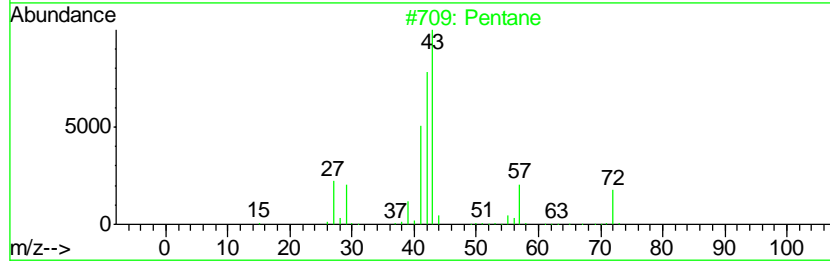
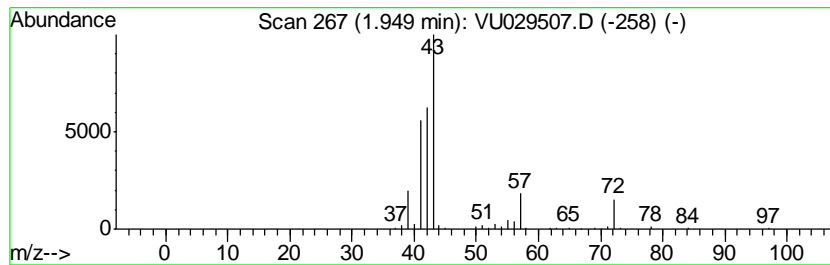
Quant Method : Z:\VOASRV\HPCHEM1\MSVOA_U\METHOD\SOMUTR021219WMA.M
 Quant Title : TRACE VOA SOM01.0

TIC Library : C:\DATABASE\NIST11.L
 TIC Integration Parameters: LSCINT.P

 Peak Number 4 (DEL) Alkane: Straight-Chai... Concentration Rank 5

R.T.	EstConc	Area	Relative to ISTD	R.T.
1.95	1.38 ug/L	112806	1,4-Difluorobenzene	5.88

Hit#	of	Tentative ID	MW	MolForm	CAS#	Qual
1	5	Pentane	72	C5H12	000109-66-0	90
2		Pentane	72	C5H12	000109-66-0	86
3		Pentane	72	C5H12	000109-66-0	86
4		Pentane	72	C5H12	000109-66-0	64
5		Oxirane, ethyl-	72	C4H8O	000106-88-7	50



Data Path : Z:\VOASRV\HPCHEM1\MSVOA U\DATA\VU021619\
 Data File : VU029507.D
 Acq On : 15 Feb 2019 19:43
 Operator : JC/SP
 Sample : K1438-18DL 4X
 Misc : 25.0mL/MSVOA U/WATER
 ALS Vial : 10 Sample Multiplier: 1

Instrument :
 MSVOA_U
 ClientSampleID :
 ESXEODL

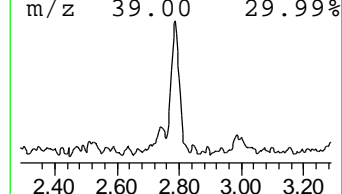
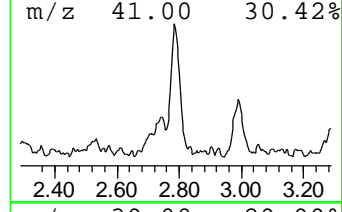
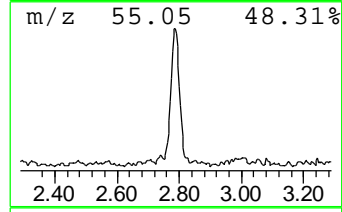
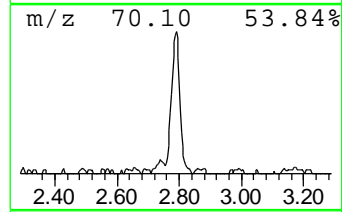
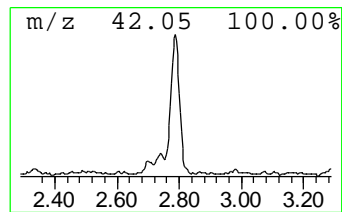
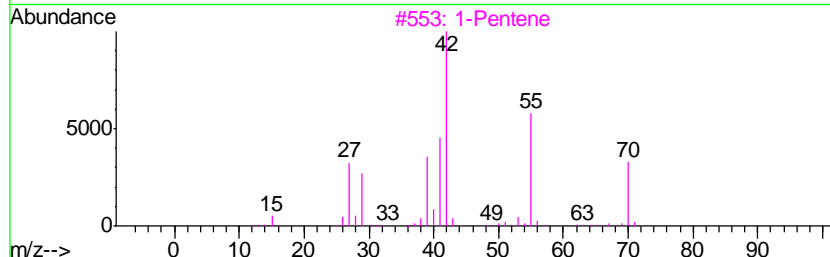
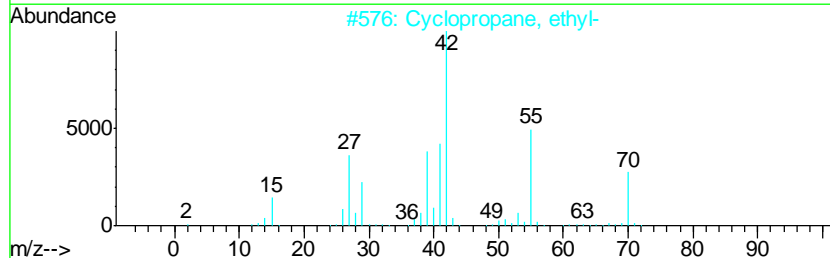
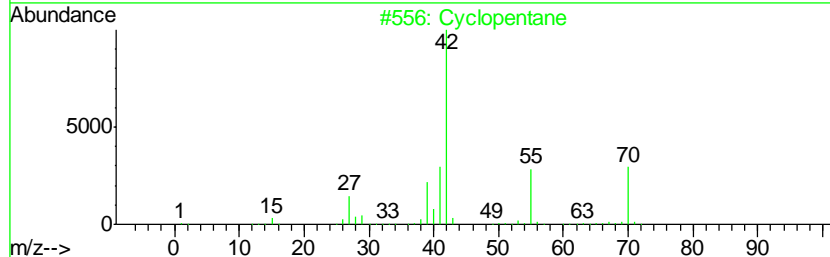
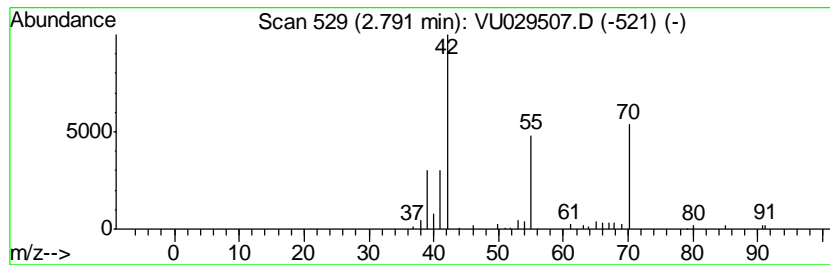
Quant Method : Z:\VOASRV\HPCHEM1\MSVOA_U\METHOD\SOMUTR021219WMA.M
 Quant Title : TRACE VOA SOM01.0

TIC Library : C:\DATABASE\NIST11.L
 TIC Integration Parameters: LSCINT.P

 Peak Number 5 (DEL) Alkane: Cyclic2.79 Concentration Rank 6

R.T.	EstConc	Area	Relative to ISTD	R.T.
2.79	0.66 ug/L	53957	1,4-Difluorobenzene	5.88

Hit#	of	Tentative ID	MW	MolForm	CAS#	Qual
1	5	Cyclopentane	70	C5H10	000287-92-3	72
2		Cyclopropane, ethyl-	70	C5H10	001191-96-4	45
3		1-Pentene	70	C5H10	000109-67-1	39
4		1-Pentene	70	C5H10	000109-67-1	9
5		Cyclopentane	70	C5H10	000287-92-3	9



Data Path : Z:\VOASRV\HPCHEM1\MSVOA U\DATA\VU021619\
 Data File : VU029507.D
 Acq On : 15 Feb 2019 19:43
 Operator : JC/SP
 Sample : K1438-18DL 4X
 Misc : 25.0mL/MSVOA U/WATER
 ALS Vial : 10 Sample Multiplier: 1

Instrument :
 MSVOA_U
 ClientSampleID :
 ESXE0DL

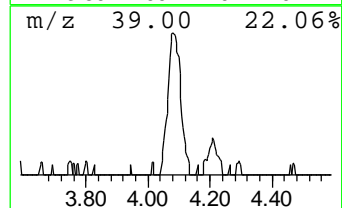
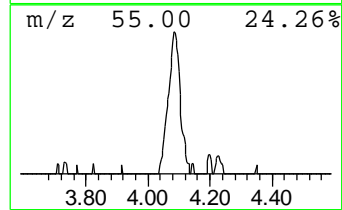
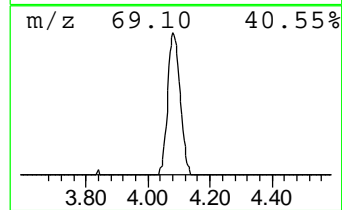
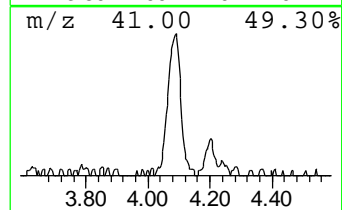
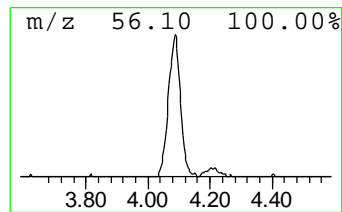
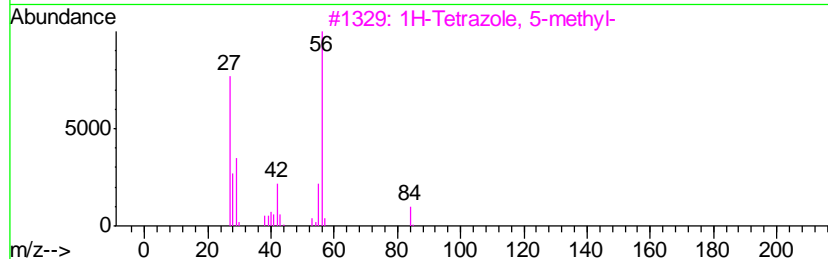
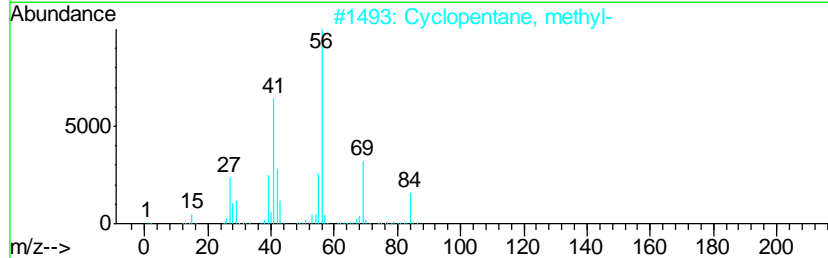
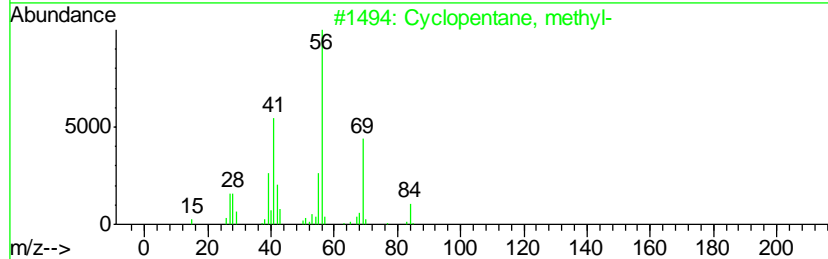
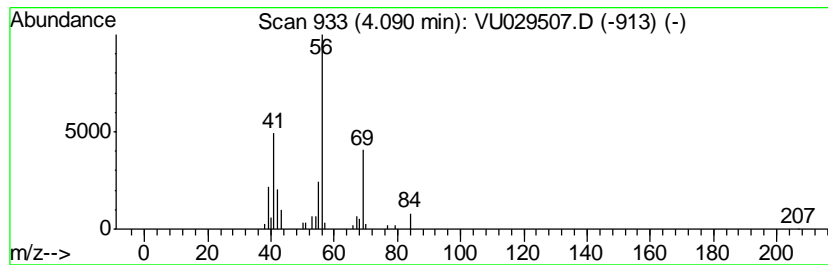
Quant Method : Z:\VOASRV\HPCHEM1\MSVOA_U\METHOD\SOMUTR021219WMA.M
 Quant Title : TRACE VOA SOM01.0

TIC Library : C:\DATABASE\NIST11.L
 TIC Integration Parameters: LSCINT.P

 Peak Number 6 (DEL) Alkane: Cyclic4.09 Concentration Rank 7

R.T.	EstConc	Area	Relative to ISTD	R.T.
4.09	0.66 ug/L	53896	1,4-Difluorobenzene	5.88

Hit#	of	Tentative ID	MW	MolForm	CAS#	Qual
1	5	Cyclopentane, methyl-	84	C6H12	000096-37-7	91
2		Cyclopentane, methyl-	84	C6H12	000096-37-7	90
3		1H-Tetrazole, 5-methyl-	84	C2H4N4	004076-36-2	72
4		Cyclopentane, methyl-	84	C6H12	000096-37-7	64
5		Cyclobutane, ethyl-	84	C6H12	004806-61-5	64



Data Path : Z:\VOASRV\HPCHEM1\MSVOA_U\DATA\VU021619\
Data File : VU029507.D
Acq On : 15 Feb 2019 19:43
Operator : JC/SP
Sample : K1438-18DL 4X
Misc : 25.0mL/MSVOA_U/WATER
ALS Vial : 10 Sample Multiplier: 1

Instrument :
MSVOA_U
ClientSampled :
ESXEODL

Quant Method : Z:\VOASRV\HPCHEM1\MSVOA_U\METHOD\SOMUTR021219WMA.M
Quant Title : TRACE VOA SOM01.0

TIC Library : C:\DATABASE\NIST11.L
TIC Integration Parameters: LSCINT.P

TIC Top Hit name	RT	EstConc	Units	Response	--Internal Standard--			
					#	RT	Resp	Conc
(DEL) Alkane: Str...	1.18	21.4	ug/L	1747280	1	5.88	408505	5.0
(DEL) Alkane: Str...	1.30	5.0	ug/L	412675	1	5.88	408505	5.0
(DEL) Alkane: Str...	1.76	1.9	ug/L	158575	1	5.88	408505	5.0
(DEL) Alkane: Str...	1.95	1.4	ug/L	112806	1	5.88	408505	5.0
(DEL) Alkane: Cyc...	2.79	0.7	ug/L	53957	1	5.88	408505	5.0
(DEL) Alkane: Cyc...	4.09	0.7	ug/L	53896	1	5.88	408505	5.0