

Data Path : Z:\VOASRV\HPCHEM1\MSVOA U\DATA\VU021720\  
 Data File : VU036805.D  
 Acq On : 17 Feb 2020 13:15  
 Operator : JC/MD  
 Sample : L1540-01  
 Misc : 25.0mL/MSVOA U/WATER  
 ALS Vial : 5 Sample Multiplier: 1

Instrument :  
 MSVOA\_U  
 ClientSampleId :  
 DBCX8

Quant Time: Feb 18 01:11:55 2020  
 Quant Method : Z:\VOASRV\HPCHEM1\MSVOA\_U\METHOD\SOMUTR021220WMA.M  
 Quant Title : TRACE VOA SOM01.0  
 QLast Update : Tue Feb 18 00:46:02 2020  
 Response via : Initial Calibration

Internal Standards	R.T.	QIon	Response	Conc	Units	Dev(Min)
1) 1,4-Difluorobenzene	6.29	114	129653	5.00	ug/L	0.00
28) Chlorobenzene-d5	9.44	117	124923	5.00	ug/L	0.00
60) 1,4-Dichlorobenzene-d4	11.83	152	51261	5.00	ug/L	0.00

## System Monitoring Compounds

4) Vinyl Chloride-d3	1.61	65	40361	3.62	ug/L	0.00
Spiked Amount	5.000	Range	40 - 130	Recovery	=	72.40%
7) Chloroethane-d5	1.93	69	38637	3.99	ug/L	0.00
Spiked Amount	5.000	Range	65 - 130	Recovery	=	79.80%
11) 1,1-Dichloroethene-d2	2.59	63	82309	4.42	ug/L	0.00
Spiked Amount	5.000	Range	60 - 125	Recovery	=	88.40%
20) 2-Butanone-d5	4.67	46	109435	46.80	ug/L	0.00
Spiked Amount	50.000	Range	40 - 130	Recovery	=	93.60%
24) Chloroform-d	5.11	84	74823	4.35	ug/L	0.00
Spiked Amount	5.000	Range	70 - 125	Recovery	=	87.00%
26) 1,2-Dichloroethane-d4	5.74	65	43077	4.37	ug/L	0.00
Spiked Amount	5.000	Range	70 - 130	Recovery	=	87.40%
32) Benzene-d6	5.76	84	161193	4.24	ug/L	0.00
Spiked Amount	5.000	Range	70 - 125	Recovery	=	84.80%
36) 1,2-Dichloropropane-d6	6.73	67	53636	4.45	ug/L	0.00
Spiked Amount	5.000	Range	60 - 140	Recovery	=	89.00%
41) Toluene-d8	7.92	98	144347	4.08	ug/L	0.00
Spiked Amount	5.000	Range	70 - 130	Recovery	=	81.60%
43) trans-1,3-Dichloropropene-	8.20	79	19022	4.06	ug/L	0.00
Spiked Amount	5.000	Range	55 - 130	Recovery	=	81.20%
46) 2-Hexanone-d5	8.66	63	96303	45.01	ug/L	0.00
Spiked Amount	50.000	Range	45 - 130	Recovery	=	90.02%
57) 1,1,2,2-Tetrachloroethane-	10.78	84	42015	4.42	ug/L	0.00
Spiked Amount	5.000	Range	65 - 120	Recovery	=	88.40%
64) 1,2-Dichlorobenzene-d4	12.21	152	45539	4.45	ug/L	0.00
Spiked Amount	5.000	Range	80 - 120	Recovery	=	89.00%

## Target Compounds

Target Compounds	R.T.	QIon	Response	Conc	Units	Ovalue
2) Dichlorodifluoromethane	1.39	85	20440	2.387	ug/L	99
3) Chloromethane	1.54	50	71076	7.975	ug/L	99
5) Vinyl chloride	1.62	62	59290	5.695	ug/L	98
6) Bromomethane	1.87	94	31409	5.021	ug/L	98
8) Chloroethane	1.95	64	33660	4.629	ug/L	99
9) Trichlorofluoromethane	2.16	101	122854	8.970	ug/L	99
10) 1,1,2-Trichloro-1,2,2-trif	2.60	101	36728	4.199	ug/L	98
12) 1,1-Dichloroethene	2.60	96	46798	5.934	ug/L	90
16) Methylene chloride	3.08	84	38823	2.920	ug/L	97
17) Methyl tert-butyl Ether	3.40	73	115254	4.934	ug/L	99
18) trans-1,2-Dichloroethene	3.39	96	57312	7.042	ug/L	99
22) cis-1,2-Dichloroethene	4.71	96	61706	6.265	ug/L	95
23) Bromochloromethane	5.02	128	7831	2.000	ug/L	96
25) Chloroform	5.13	83	79351	4.354	ug/L	100
27) 1,2-Dichloroethane	5.83	62	54220	4.667	ug/L	100
29) 1,1,1-Trichloroethane	5.36	97	65910	4.804	ug/L	99
31) Carbon tetrachloride	5.56	117	52991	4.787	ug/L	99

Data Path : Z:\VOASRV\HPCHEM1\MSVOA U\DATA\VU021720\  
 Data File : VU036805.D  
 Acq On : 17 Feb 2020 13:15  
 Operator : JC/MD  
 Sample : L1540-01  
 Misc : 25.0mL/MSVOA U/WATER  
 ALS Vial : 5 Sample Multiplier: 1

Instrument :  
 MSVOA\_U  
 ClientSampleId :  
 DBCX8

Quant Time: Feb 18 01:11:55 2020  
 Quant Method : Z:\VOASRV\HPCHEM1\MSVOA\_U\METHOD\SOMUTR021220WMA.M  
 Quant Title : TRACE VOA SOM01.0  
 QLast Update : Tue Feb 18 00:46:02 2020  
 Response via : Initial Calibration

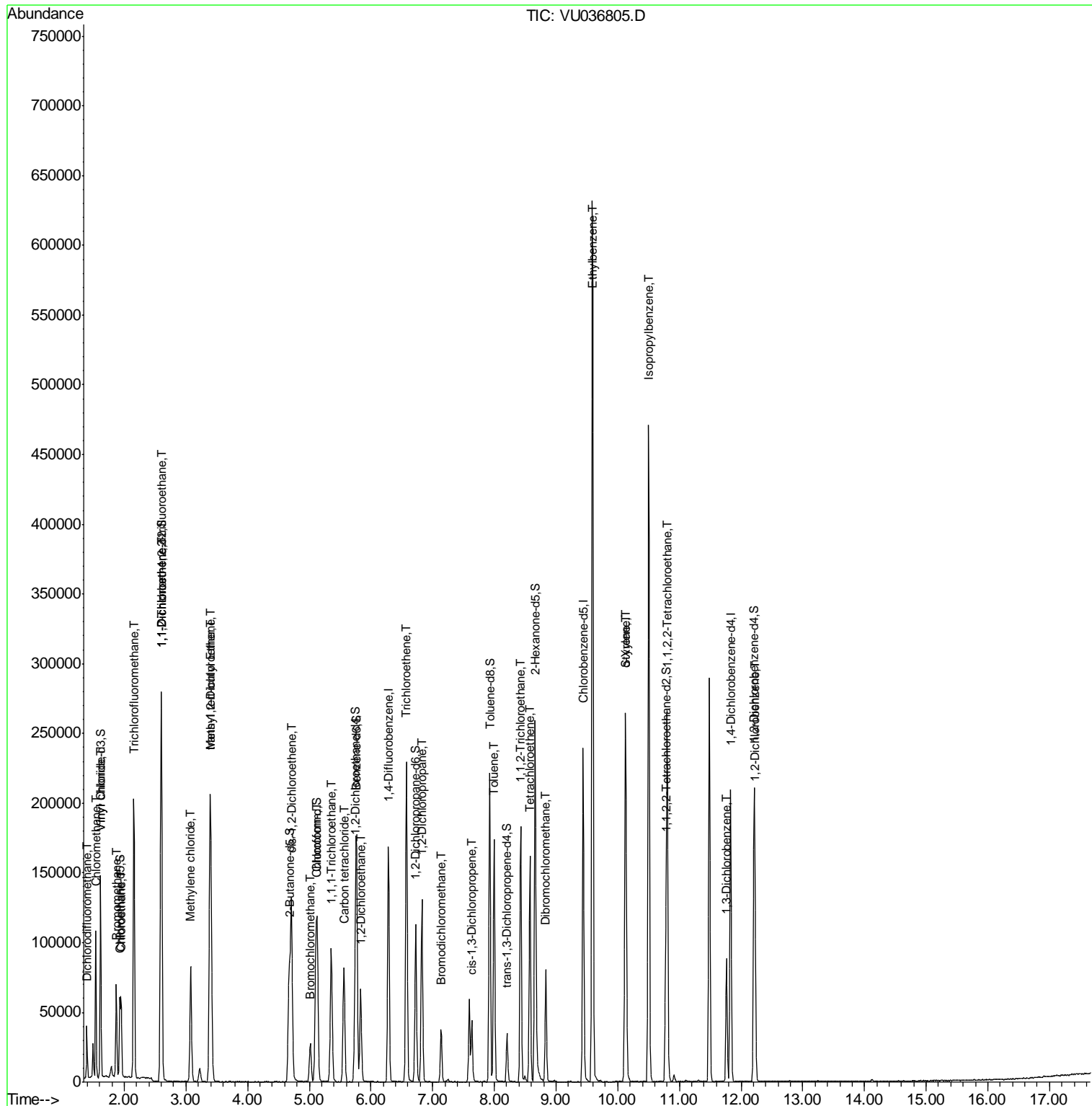
Internal Standards	R.T.	QIon	Response	Conc	Units	Dev(Min)
34) Trichloroethene	6.57	95	78107	7.959	ug/L	99
37) 1,2-Dichloropropane	6.83	63	50173	4.769	ug/L	99
38) Bromodichloromethane	7.14	83	23672	1.885	ug/L	95
39) cis-1,3-Dichloropropene	7.64	75	25234	1.658	ug/L	100
42) Toluene	8.00	91	123575	2.986	ug/L	98
45) 1,1,2-Trichloroethane	8.43	97	54146	7.397	ug/L	98
47) Tetrachloroethene	8.58	164	32909	4.929	ug/L	98
49) Dibromochloromethane	8.83	129	39283	5.190	ug/L	98
52) Ethylbenzene	9.59	91	447719	9.687	ug/L	99
54) o-Xylene	10.12	106	48181	2.884	ug/L	97
55) Styrene	10.13	104	73819	2.622	ug/L	100
56) Isopropylbenzene	10.50	105	299689	6.704	ug/L	100
58) 1,1,2,2-Tetrachloroethane	10.80	83	41595	4.341	ug/L	97
62) 1,3-Dichlorobenzene	11.76	146	33344	1.888	ug/L	99
65) 1,2-Dichlorobenzene	12.23	146	33021	1.939	ug/L	99

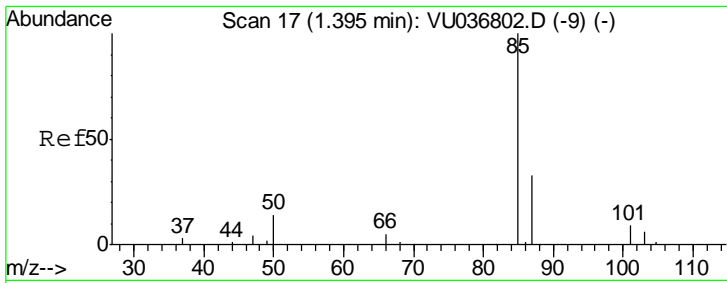
(#) = qualifier out of range (m) = manual integration (+) = signals summed

Data Path : Z:\VOASRV\HPCHEM1\MSVOA U\DATA\VU021720\  
 Data File : VU036805.D  
 Acq On : 17 Feb 2020 13:15  
 Operator : JC/MD  
 Sample : L1540-01  
 Misc : 25.0mL/MSVOA U/WATER  
 ALS Vial : 5 Sample Multiplier: 1

Instrument :  
 MSVOA\_U  
 ClientSampled :  
 DBCX8

Quant Time: Feb 18 01:11:55 2020  
 Quant Method : Z:\VOASRV\HPCHEM1\MSVOA\_U\METHOD\SOMUTR021220WMA.M  
 Quant Title : TRACE VOA SOM01.0  
 QLast Update : Tue Feb 18 00:46:02 2020  
 Response via : Initial Calibration

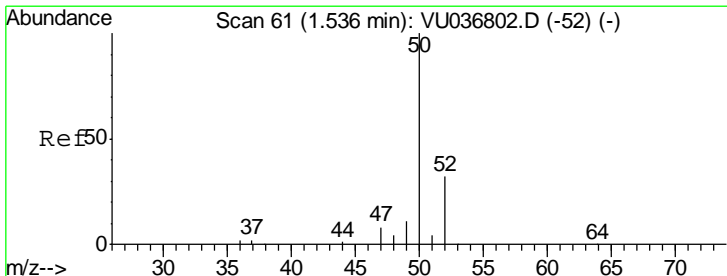
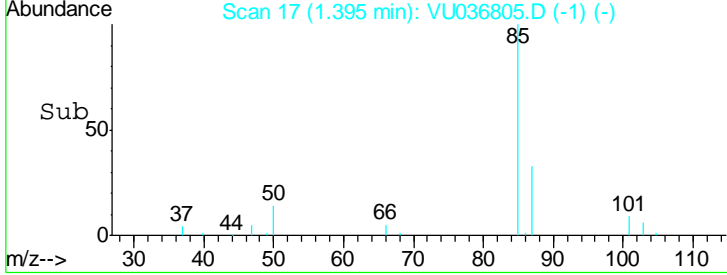
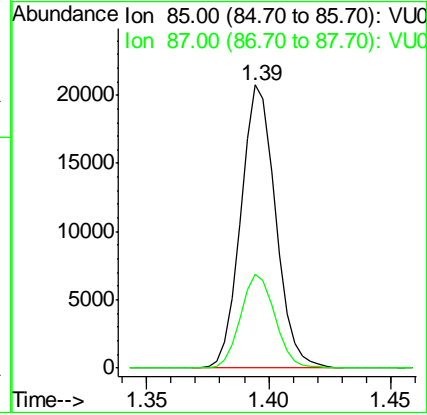
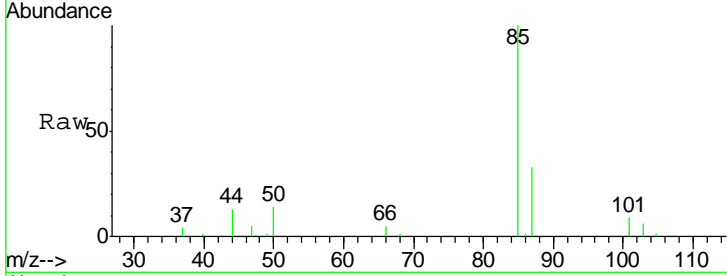




#2  
 Dichlorodifluoromethane  
 Concen: 2.387 ug/L  
 RT: 1.39 min Scan# 17  
 Delta R.T. -0.00 min  
 Lab File: VU036805.D  
 Acq: 17 Feb 2020 13:15

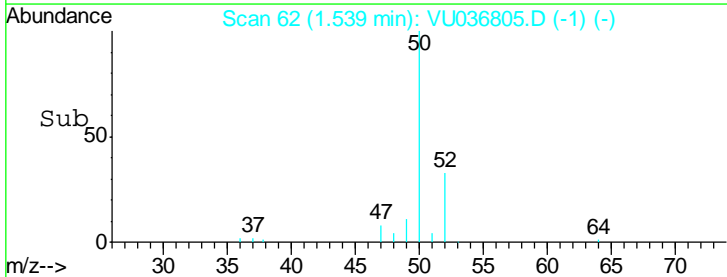
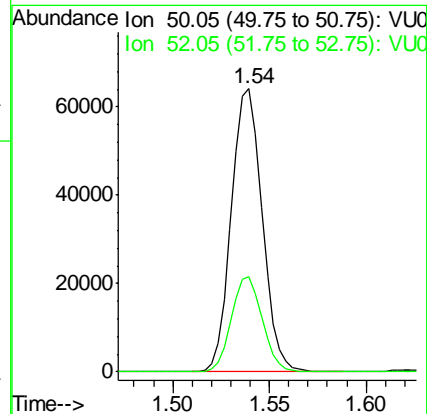
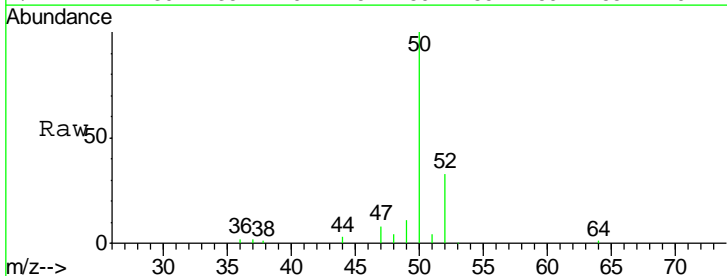
**Instrument :**  
 MSVOA\_U  
**ClientSampled :**  
 DBCX8

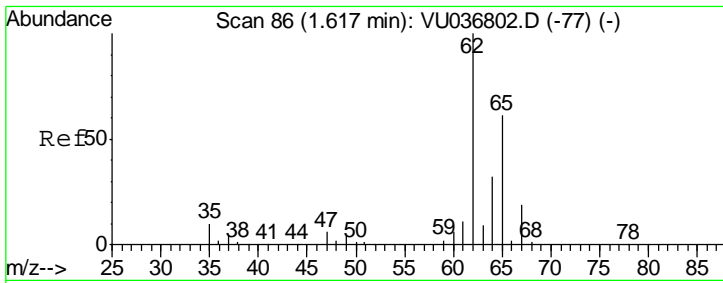
Tot Ion: 85 Resp: 20440  
 Ion Ratio Lower Upper  
 85 100  
 87 32.8 25.7 38.5



#3  
 Chloromethane  
 Concen: 7.975 ug/L  
 RT: 1.54 min Scan# 62  
 Delta R.T. 0.00 min  
 Lab File: VU036805.D  
 Acq: 17 Feb 2020 13:15

Tgt Ion: 50 Resp: 71076  
 Ion Ratio Lower Upper  
 50 100  
 52 33.4 23.8 44.2

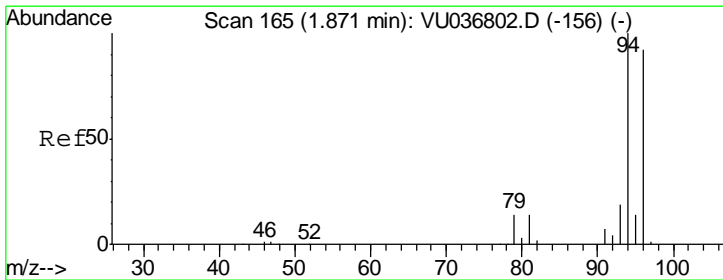
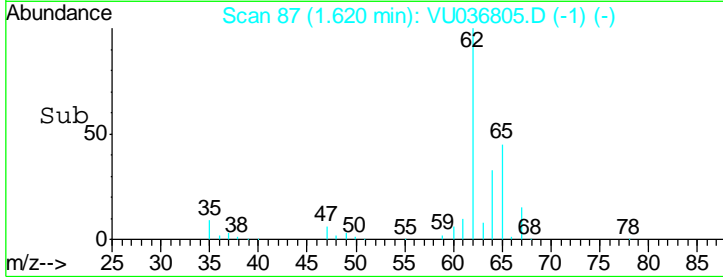
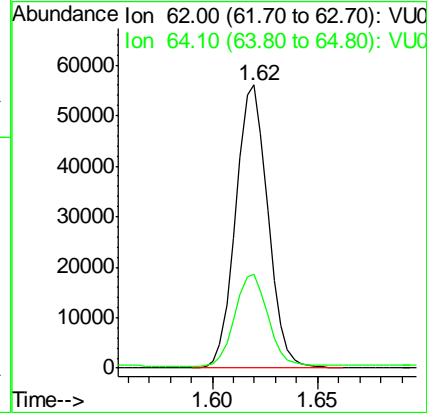
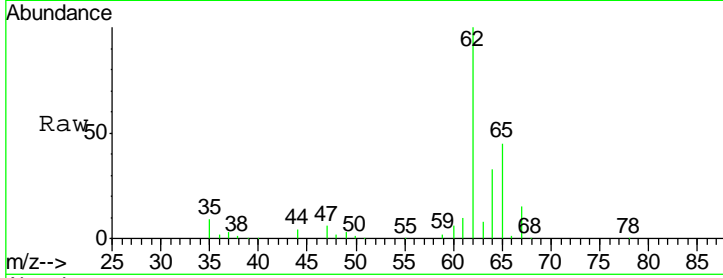




#5  
 Vinyl chloride  
 Concen: 5.695 ug/L  
 RT: 1.62 min Scan# 87  
 Delta R.T. 0.00 min  
 Lab File: VU036805.D  
 Acq: 17 Feb 2020 13:15

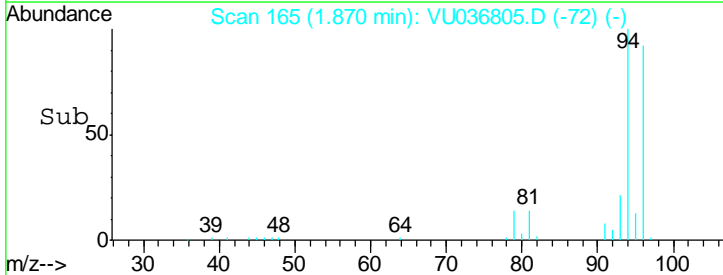
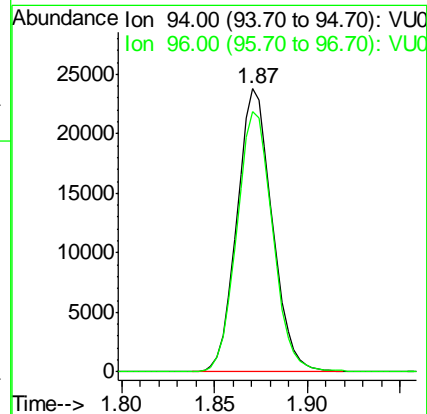
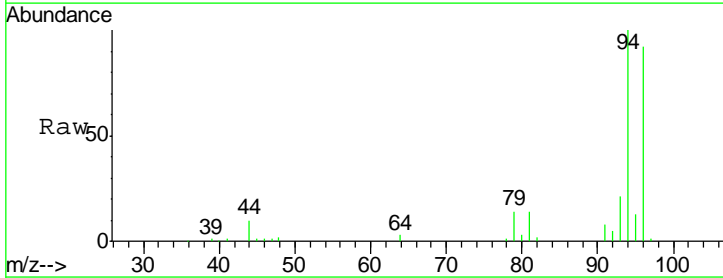
**Instrument :**  
 MSVOA\_U  
**ClientSampled :**  
 DBCX8

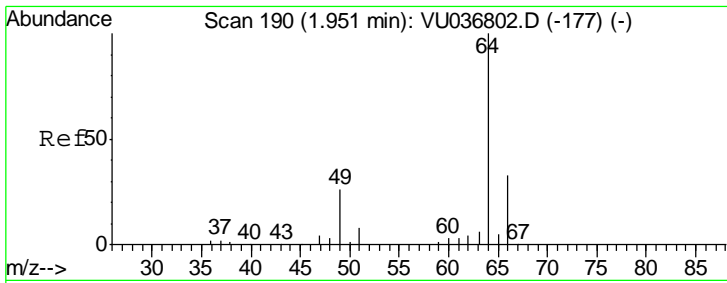
Tgt Ion	Resp	Lower	Upper
62	100		
64	33.1	24.1	44.7



#6  
 Bromomethane  
 Concen: 5.021 ug/L  
 RT: 1.87 min Scan# 165  
 Delta R.T. -0.00 min  
 Lab File: VU036805.D  
 Acq: 17 Feb 2020 13:15

Tgt Ion	Resp	Lower	Upper
94	100		
96	92.1	63.3	117.7

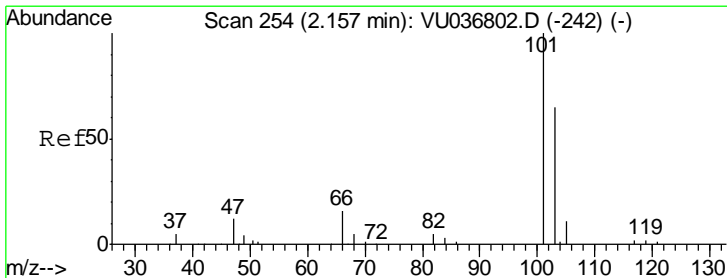
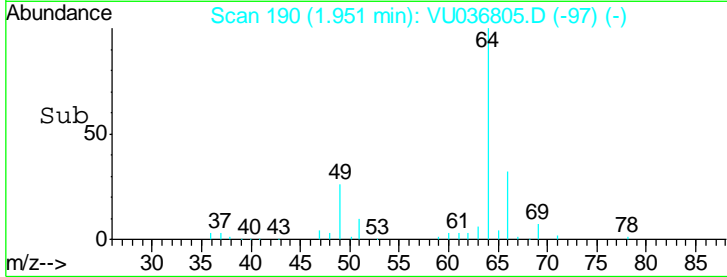
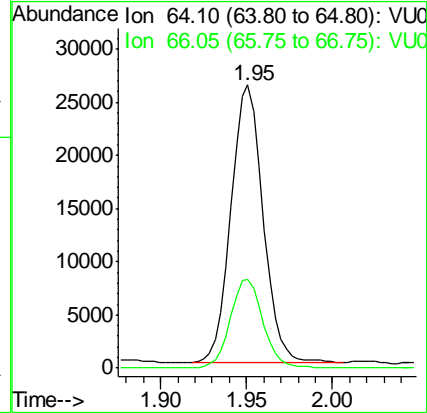
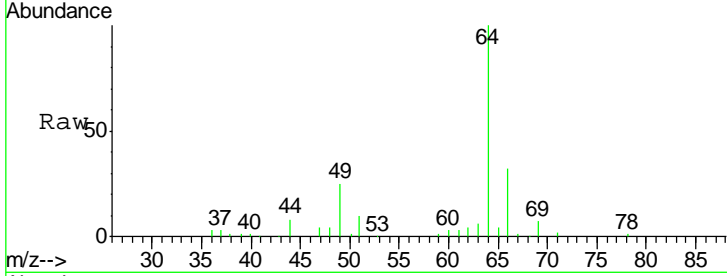




#8  
 Chloroethane  
 Concen: 4.629 ug/L  
 RT: 1.95 min Scan# 190  
 Delta R.T. -0.00 min  
 Lab File: VU036805.D  
 Acq: 17 Feb 2020 13:15

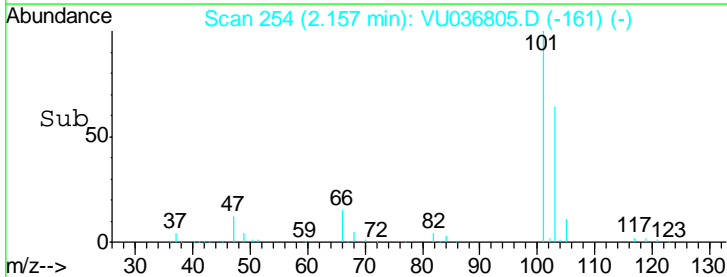
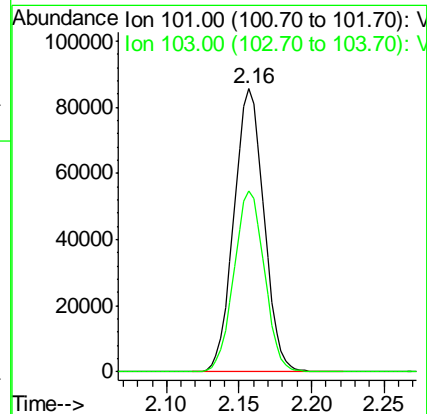
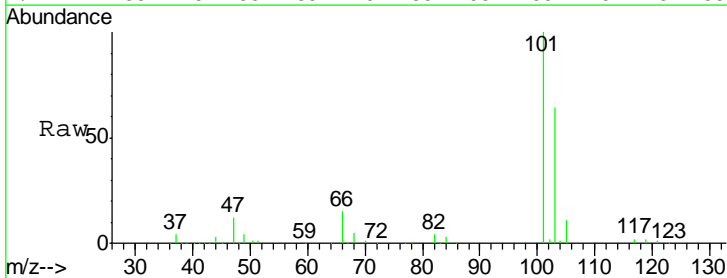
Instrument :  
 MSVOA\_U  
 ClientSampled :  
 DBCX8

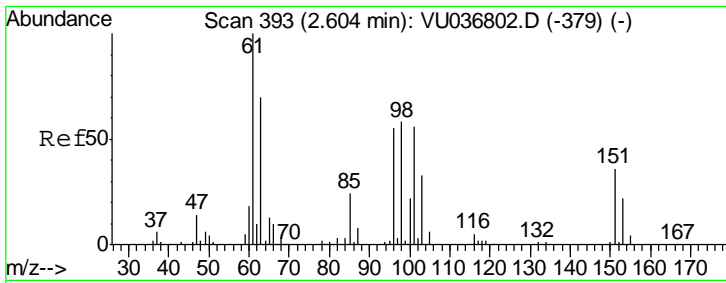
Tgt Ion	Resp	Lower	Upper
64	100		
66	31.5	21.8	40.6



#9  
 Trichlorofluoromethane  
 Concen: 8.970 ug/L  
 RT: 2.16 min Scan# 254  
 Delta R.T. -0.00 min  
 Lab File: VU036805.D  
 Acq: 17 Feb 2020 13:15

Tgt Ion	Resp	Lower	Upper
101	100		
103	64.8	51.0	76.6

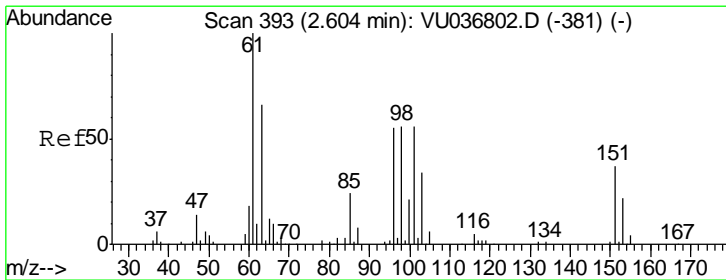
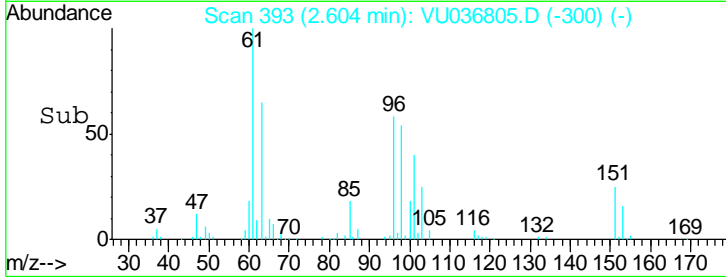
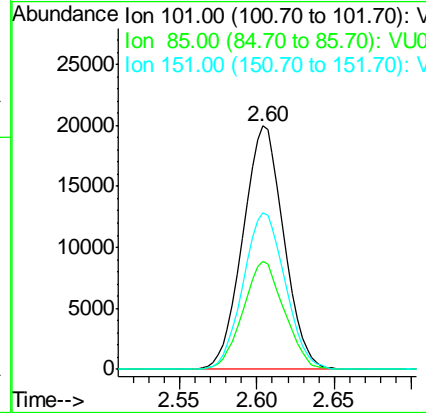
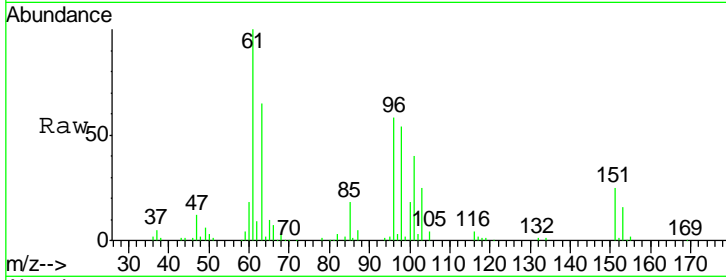




#10  
 1,1,2-Trichloro-1,2,2-trifluoroethane  
 Concen: 4.199 ug/L  
 RT: 2.60 min Scan# 393  
 Delta R.T. -0.00 min  
 Lab File: VU036805.D  
 Acq: 17 Feb 2020 13:15

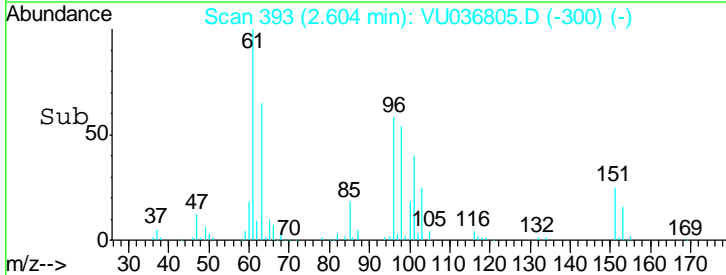
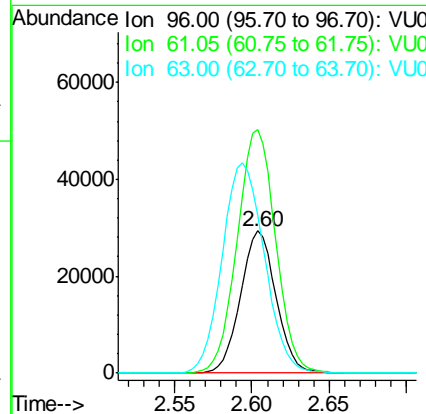
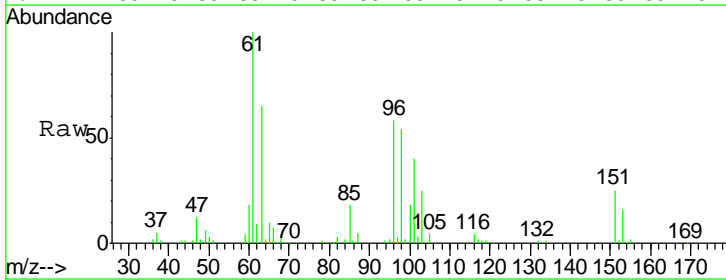
**Instrument :**  
 MSVOA\_U  
**ClientSampled :**  
 DBCX8

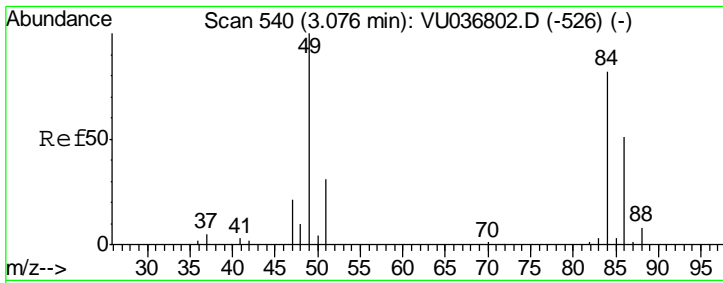
Tgt Ion	Resp	Lower	Upper
101	100		
85	44.6	36.4	54.6
151	66.0	54.0	81.0



#12  
 1,1-Dichloroethene  
 Concen: 5.934 ug/L  
 RT: 2.60 min Scan# 393  
 Delta R.T. -0.00 min  
 Lab File: VU036805.D  
 Acq: 17 Feb 2020 13:15

Tgt Ion	Resp	Lower	Upper
96	100		
61	171.4	126.4	234.8
63	110.9	89.5	166.3

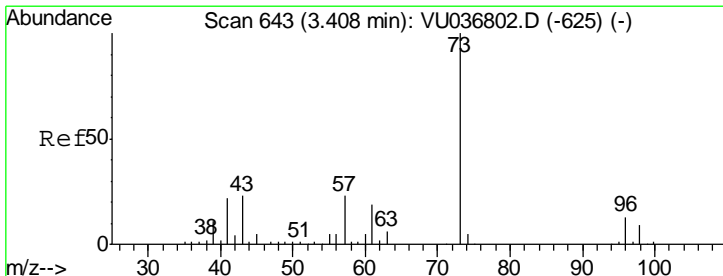
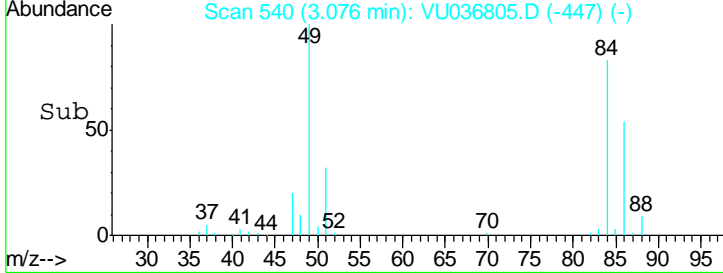
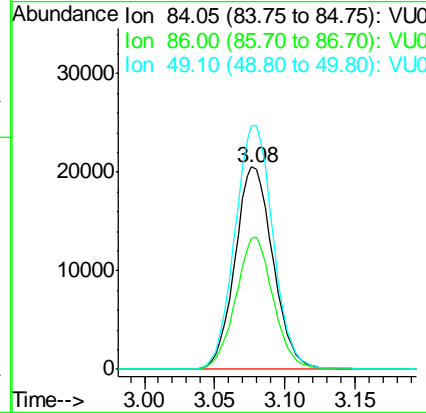
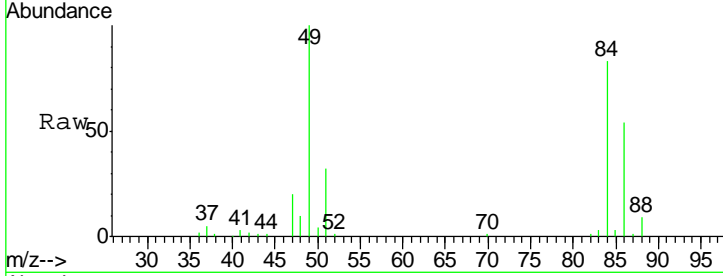




#16  
 Methylene chloride  
 Concen: 2.920 ug/L  
 RT: 3.08 min Scan# 540  
 Delta R.T. -0.00 min  
 Lab File: VU036805.D  
 Acq: 17 Feb 2020 13:15

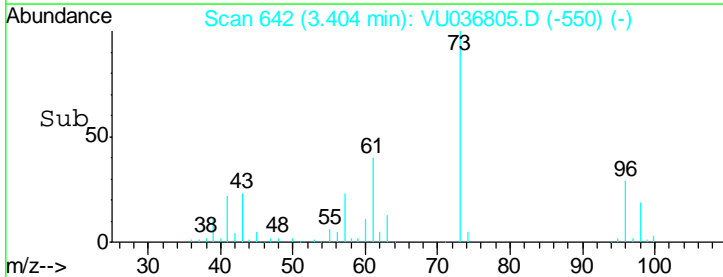
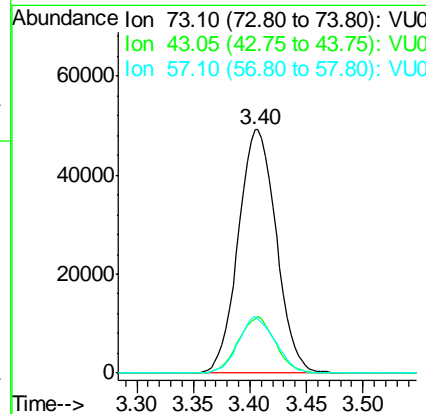
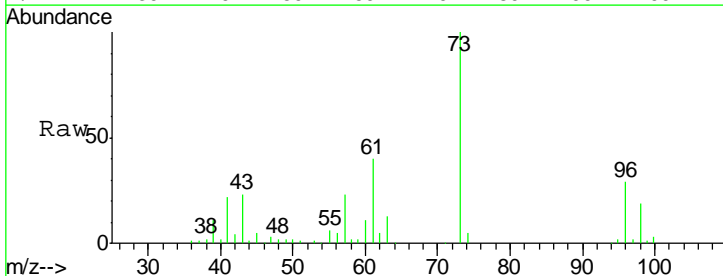
Instrument :  
 MSVOA\_U  
 ClientSampled :  
 DBCX8

Tgt Ion	Resp	Lower	Upper
84	38823		
84	100		
86	64.9	44.7	82.9
49	120.2	86.7	160.9

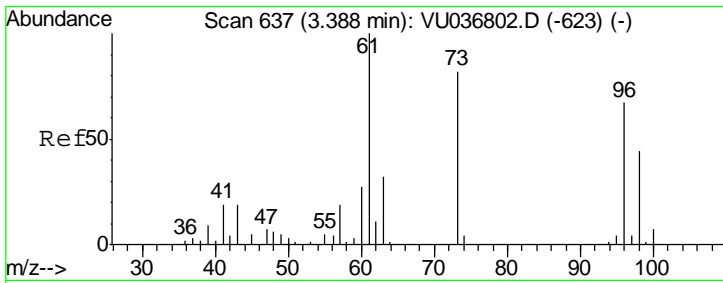


#17  
 Methyl tert-butyl Ether  
 Concen: 4.934 ug/L  
 RT: 3.40 min Scan# 642  
 Delta R.T. -0.00 min  
 Lab File: VU036805.D  
 Acq: 17 Feb 2020 13:15

Tgt Ion	Resp	Lower	Upper
73	115254		
73	100		
43	22.3	18.7	28.1
57	22.3	17.9	26.9



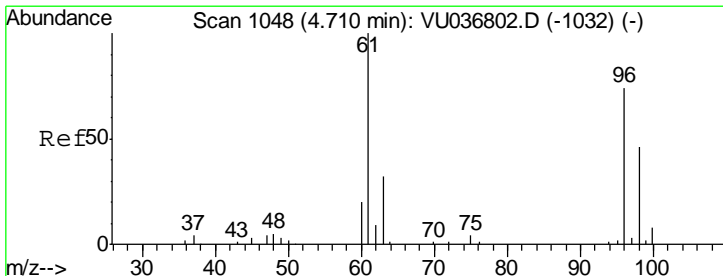
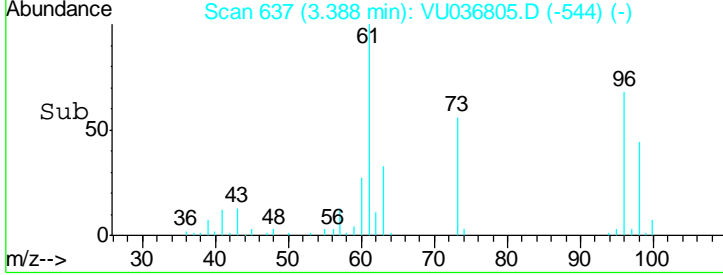
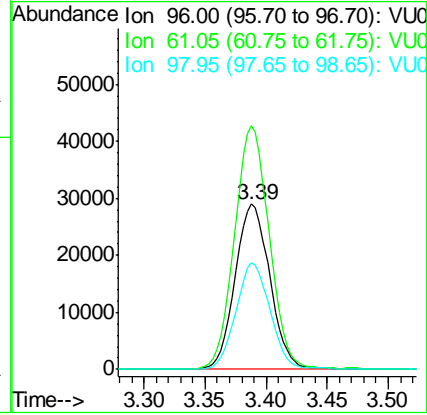
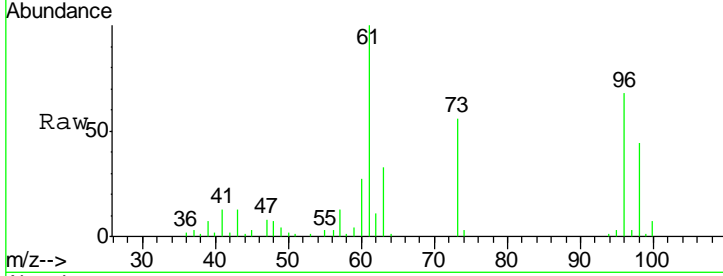




#18  
 trans-1,2-Dichloroethene  
 Concen: 7.042 ug/L  
 RT: 3.39 min Scan# 637  
 Delta R.T. -0.00 min  
 Lab File: VU036805.D  
 Acq: 17 Feb 2020 13:15

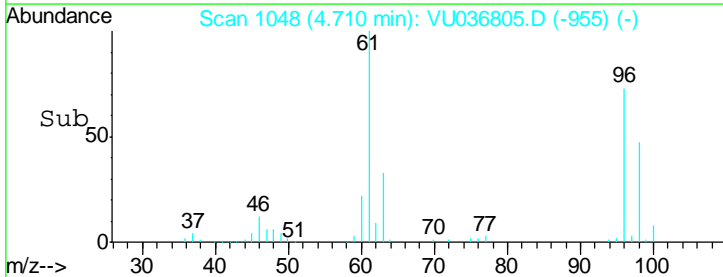
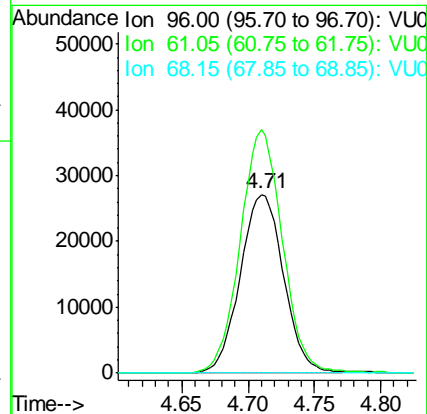
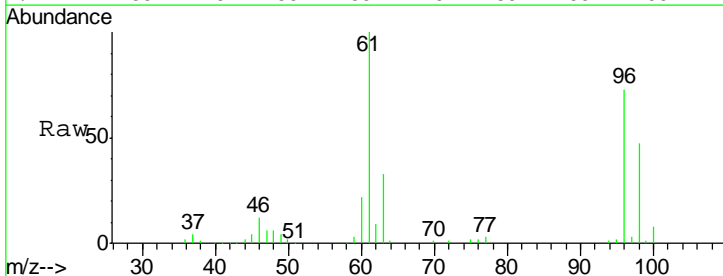
**Instrument :**  
 MSVOA\_U  
**ClientSampled :**  
 DBCX8

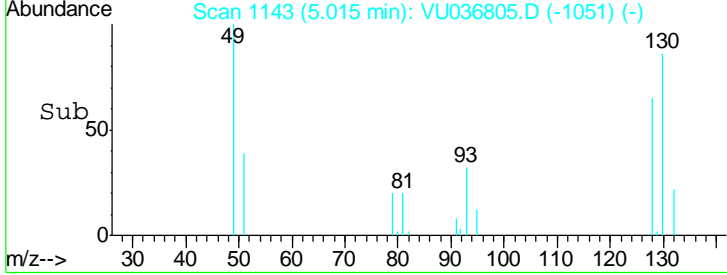
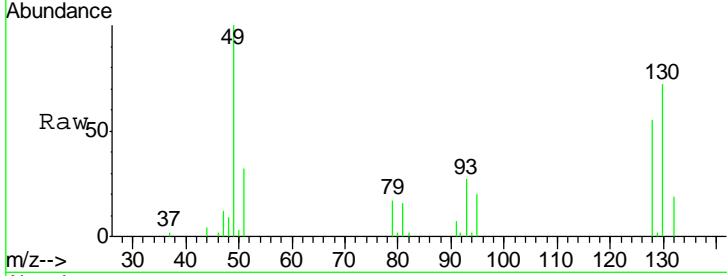
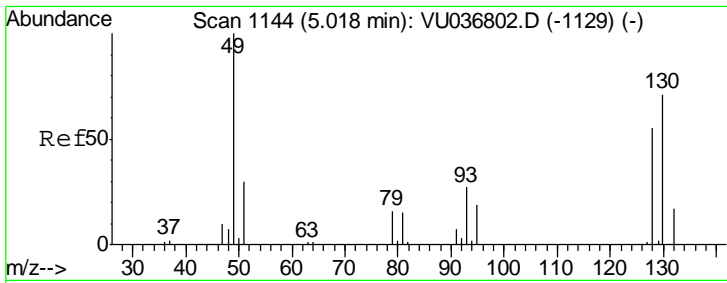
Tgt Ion	Resp	Lower	Upper
96	57312		
61	147.3	102.6	190.5
98	64.6	44.5	82.7



#22  
 cis-1,2-Dichloroethene  
 Concen: 6.265 ug/L  
 RT: 4.71 min Scan# 1048  
 Delta R.T. -0.00 min  
 Lab File: VU036805.D  
 Acq: 17 Feb 2020 13:15

Tgt Ion	Resp	Lower	Upper
96	61706		
61	136.1	91.2	169.4
68	0.0	0.0	0.0

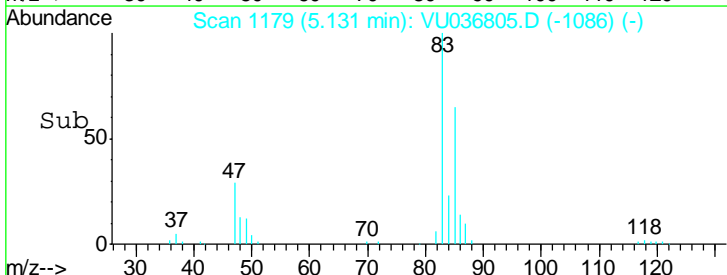
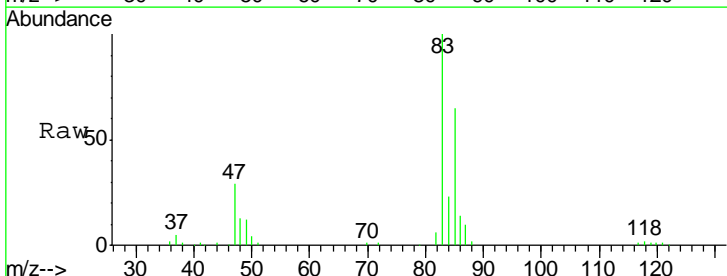
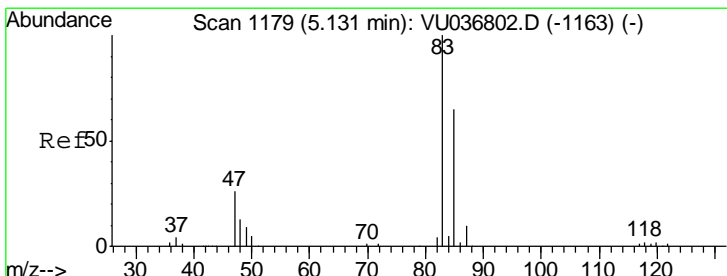
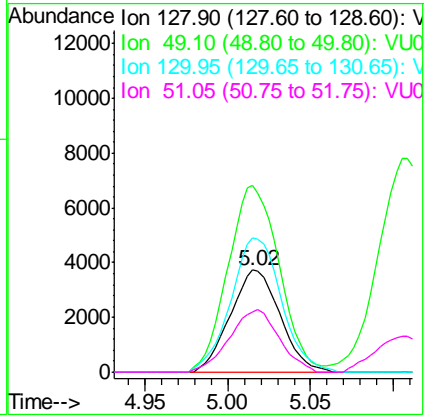




#23  
 Bromochloromethane  
 Concen: 2.000 ug/L  
 RT: 5.02 min Scan# 1143  
 Delta R.T. -0.00 min  
 Lab File: VU036805.D  
 Acq: 17 Feb 2020 13:15

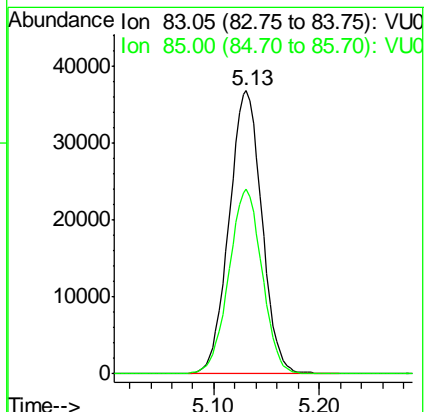
Instrument :  
 MSVOA\_U  
 ClientSampled :  
 DBCX8

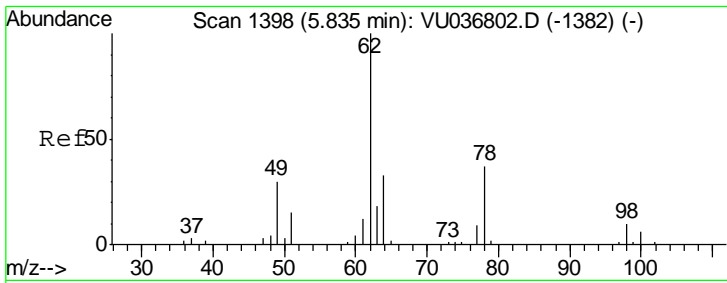
Tgt Ion	Resp	Lower	Upper
128	100		
49	182.7	132.4	245.8
130	132.0	89.0	165.2
51	59.3	45.6	68.4



#25  
 Chloroform  
 Concen: 4.354 ug/L  
 RT: 5.13 min Scan# 1179  
 Delta R.T. -0.00 min  
 Lab File: VU036805.D  
 Acq: 17 Feb 2020 13:15

Tgt Ion	Resp	Lower	Upper
83	100		
85	65.2	45.4	84.2



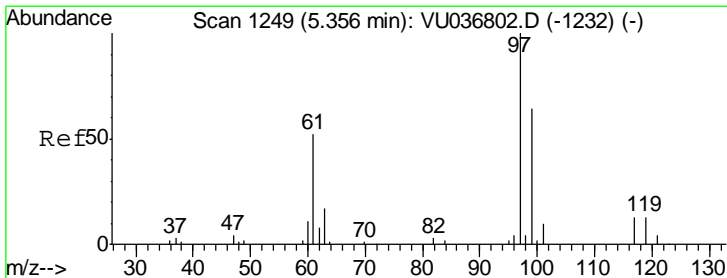
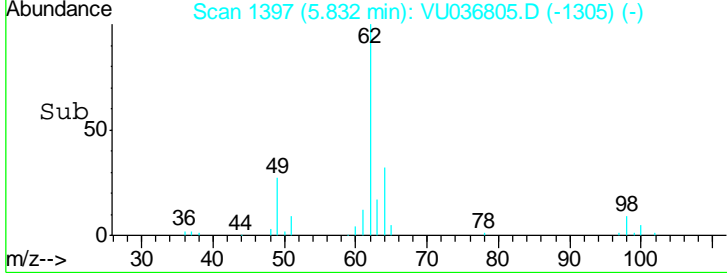
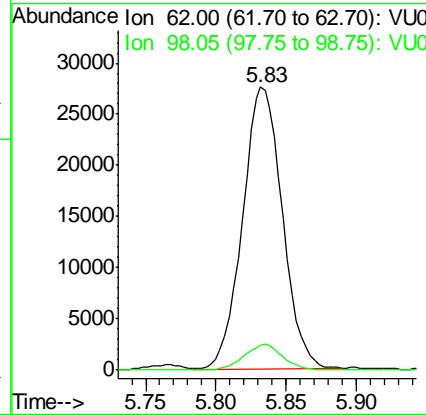
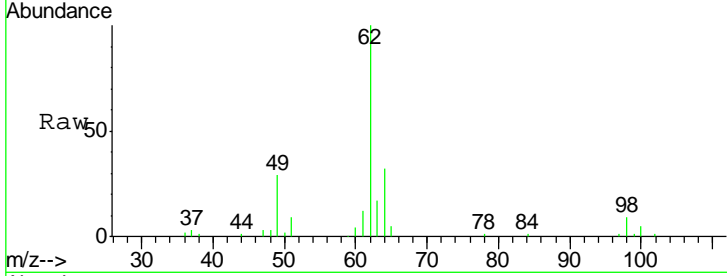


#27  
 1,2-Dichloroethane  
 Concen: 4.667 ug/L  
 RT: 5.83 min Scan# 1397  
 Delta R.T. -0.00 min  
 Lab File: VU036805.D  
 Acq: 17 Feb 2020 13:15

Instrument : MSVOA\_U  
 ClientSampled : DBCX8

Tgt Ion: 62 Resp: 54220

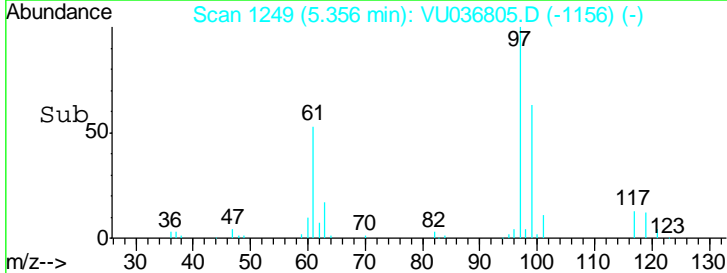
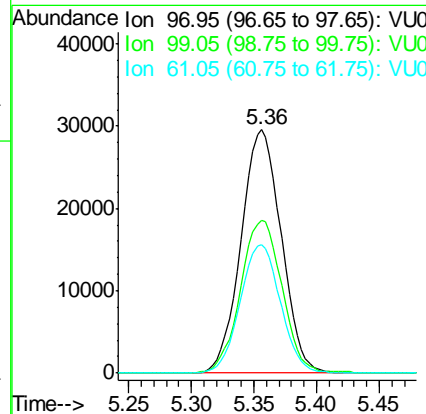
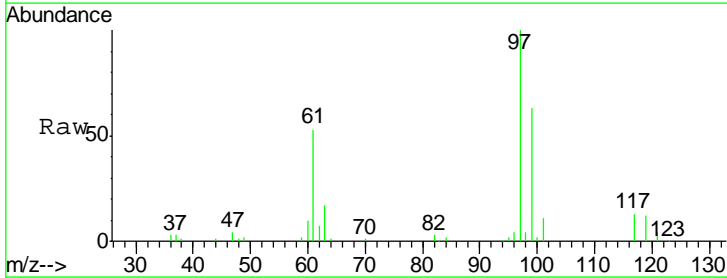
Ion	Ratio	Lower	Upper
62	100		
98	8.6	7.0	10.4

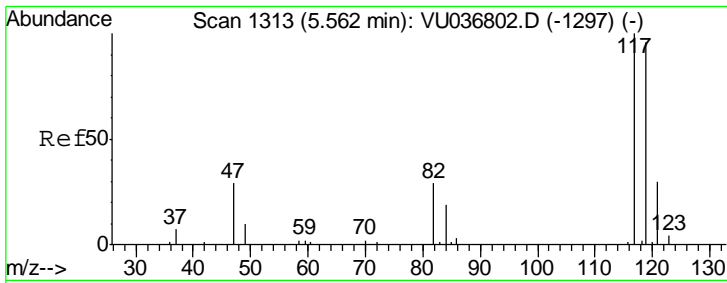


#29  
 1,1,1-Trichloroethane  
 Concen: 4.804 ug/L  
 RT: 5.36 min Scan# 1249  
 Delta R.T. -0.00 min  
 Lab File: VU036805.D  
 Acq: 17 Feb 2020 13:15

Tgt Ion: 97 Resp: 65910

Ion	Ratio	Lower	Upper
97	100		
99	64.5	51.0	76.4
61	52.8	41.6	62.4

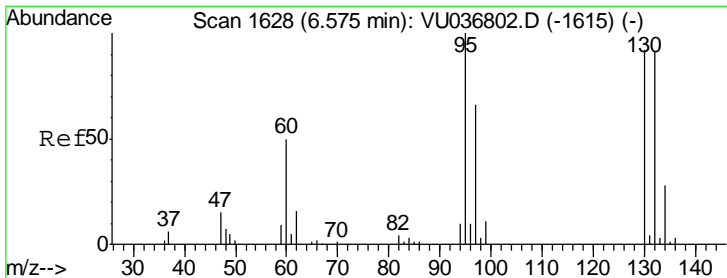
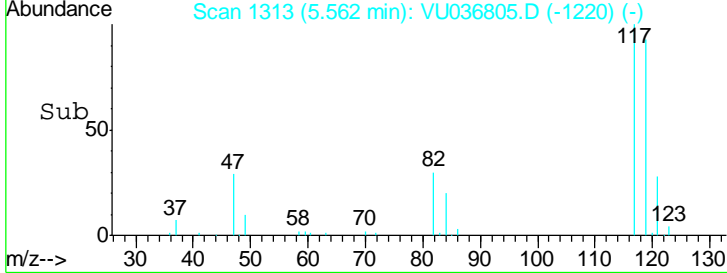
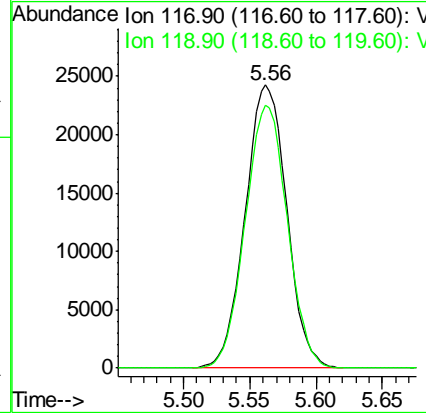
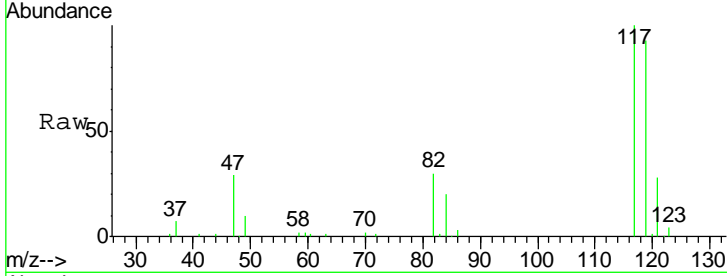




#31  
 Carbon tetrachloride  
 Concen: 4.787 ug/L  
 RT: 5.56 min Scan# 1313  
 Delta R.T. -0.00 min  
 Lab File: VU036805.D  
 Acq: 17 Feb 2020 13:15

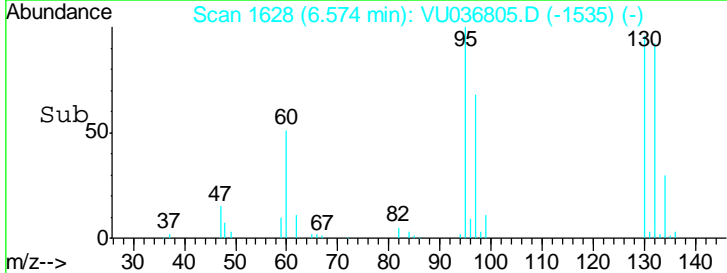
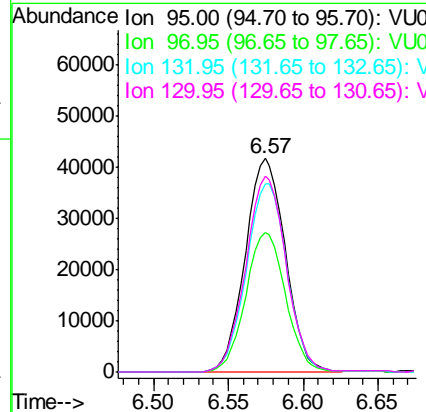
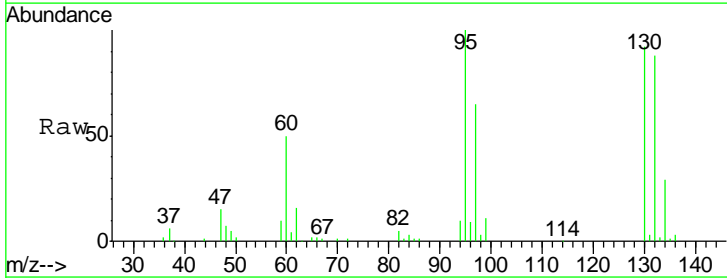
Instrument : MSVOA\_U  
 ClientSampled : VU036805.D  
 DBCX8

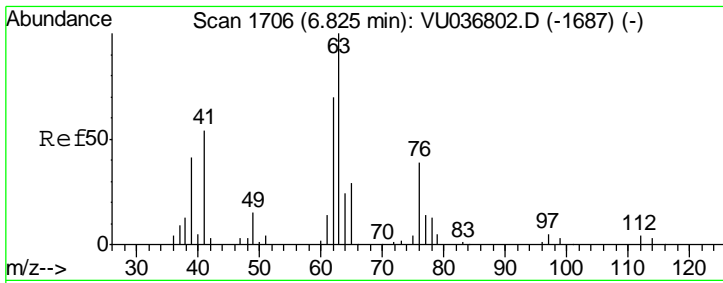
Tgt Ion: 117 Resp: 52991  
 Ion Ratio Lower Upper  
 117 100  
 119 94.0 74.5 111.7



#34  
 Trichloroethene  
 Concen: 7.959 ug/L  
 RT: 6.57 min Scan# 1628  
 Delta R.T. -0.00 min  
 Lab File: VU036805.D  
 Acq: 17 Feb 2020 13:15

Tgt Ion: 95 Resp: 78107  
 Ion Ratio Lower Upper  
 95 100  
 97 65.5 45.6 84.8  
 132 88.1 62.8 116.6  
 130 91.7 63.8 118.4

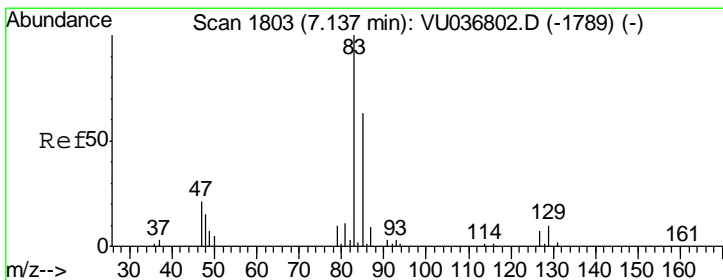
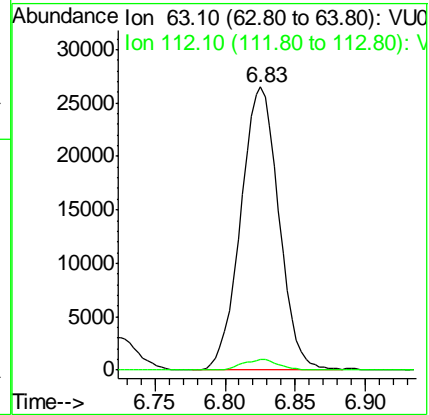
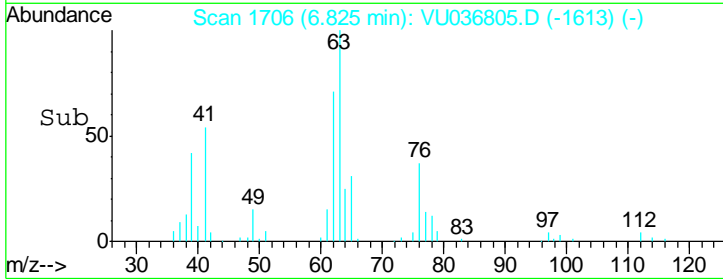
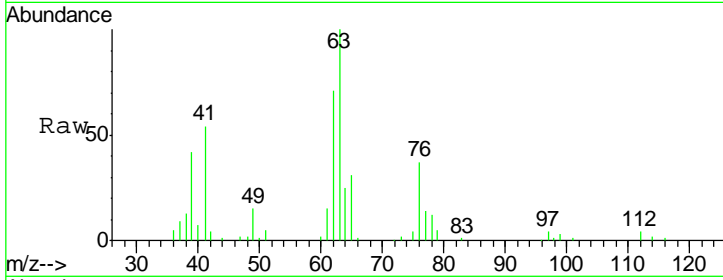




#37  
 1,2-Dichloropropane  
 Concen: 4.769 ug/L  
 RT: 6.83 min Scan# 1706  
 Delta R.T. -0.00 min  
 Lab File: VU036805.D  
 Acq: 17 Feb 2020 13:15

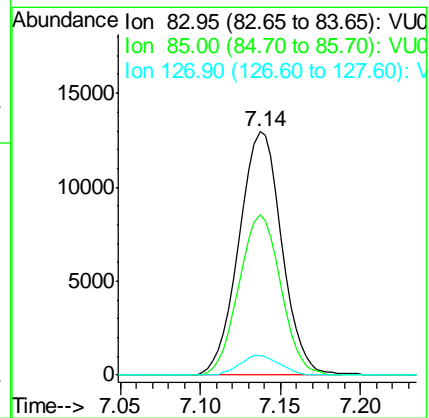
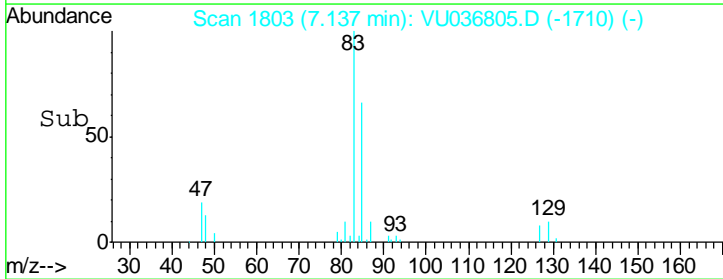
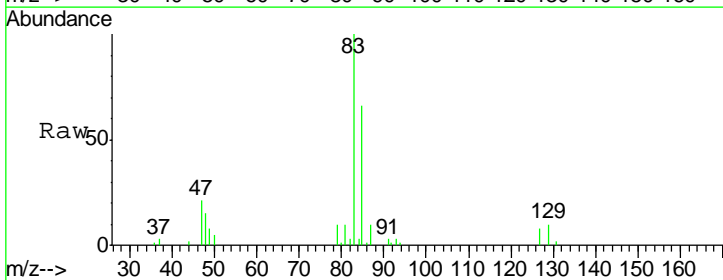
Instrument : MSVOA\_U  
 ClientSampled : DBCX8

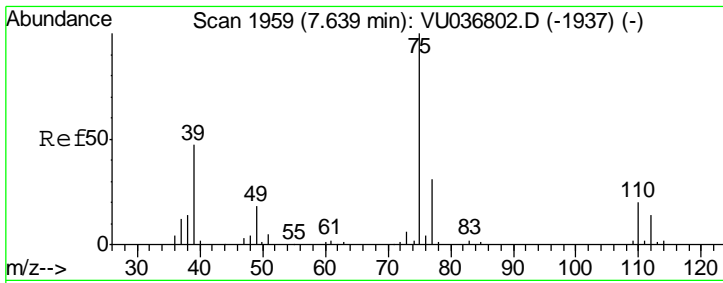
Tgt Ion	Resp	Lower	Upper
63	50173		
112	3.5	3.0	4.4



#38  
 Bromodichloromethane  
 Concen: 1.885 ug/L  
 RT: 7.14 min Scan# 1803  
 Delta R.T. -0.00 min  
 Lab File: VU036805.D  
 Acq: 17 Feb 2020 13:15

Tgt Ion	Resp	Lower	Upper
83	23672		
85	65.7	43.0	80.0
127	8.2	6.3	9.5

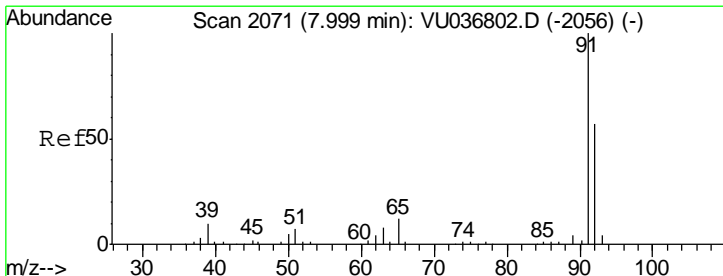
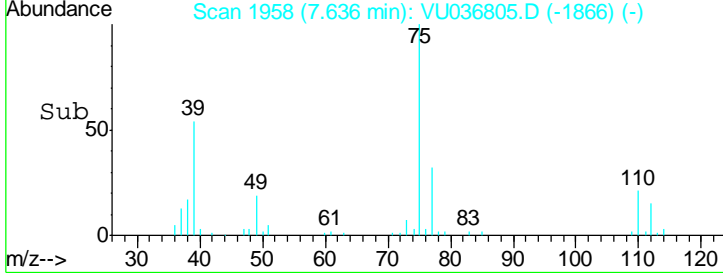
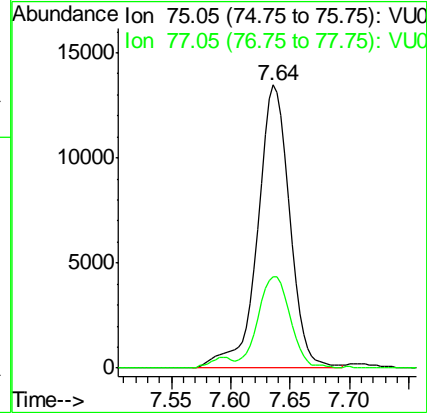
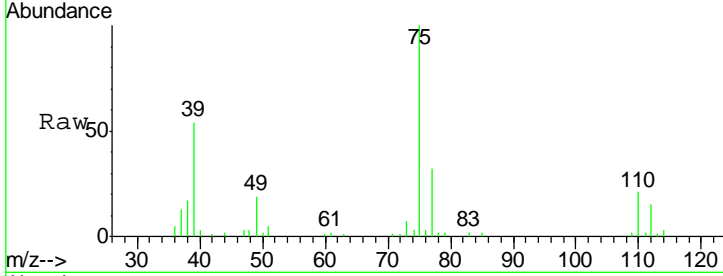




#39  
 cis-1,3-Dichloropropene  
 Concen: 1.658 ug/L  
 RT: 7.64 min Scan# 1958  
 Delta R.T. -0.00 min  
 Lab File: VU036805.D  
 Acq: 17 Feb 2020 13:15

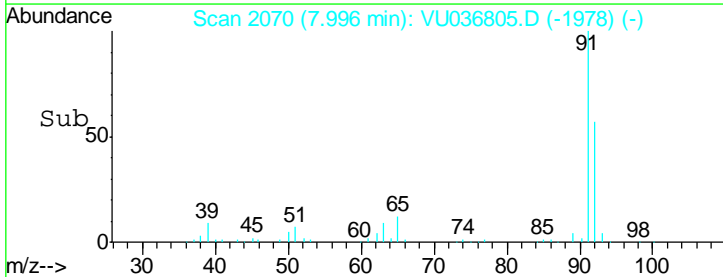
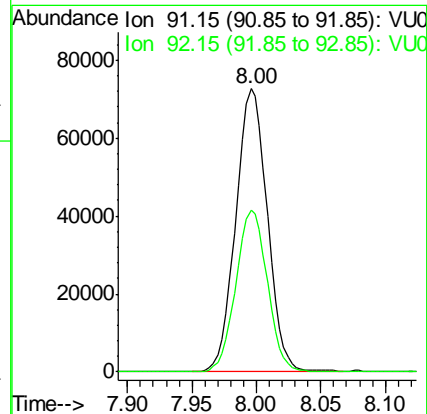
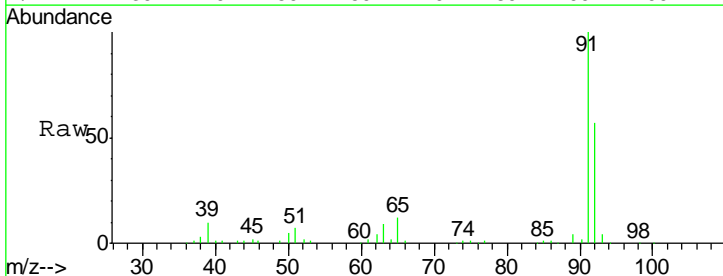
Instrument :  
 MSVOA\_U  
 ClientSampled :  
 DBCX8

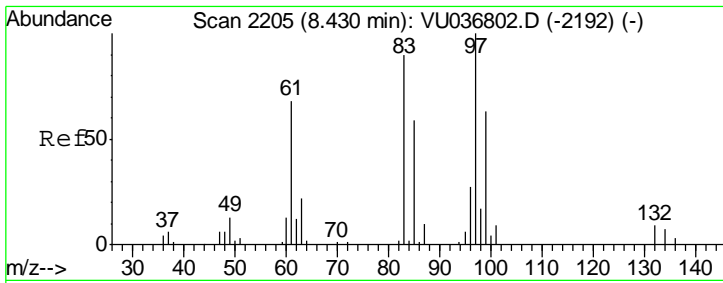
Tot Ion: 75 Resp: 25234  
 Ion Ratio Lower Upper  
 75 100  
 77 32.2 22.5 41.9



#42  
 Toluene  
 Concen: 2.986 ug/L  
 RT: 8.00 min Scan# 2070  
 Delta R.T. -0.00 min  
 Lab File: VU036805.D  
 Acq: 17 Feb 2020 13:15

Tgt Ion: 91 Resp: 123575  
 Ion Ratio Lower Upper  
 91 100  
 92 57.1 41.2 76.4

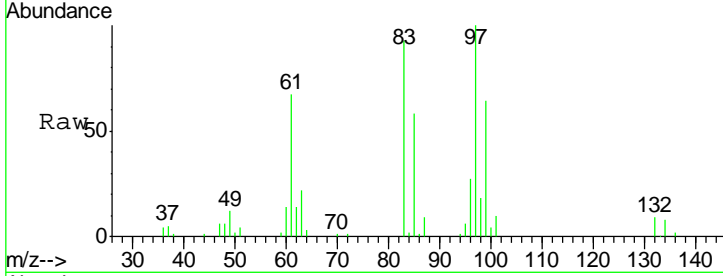




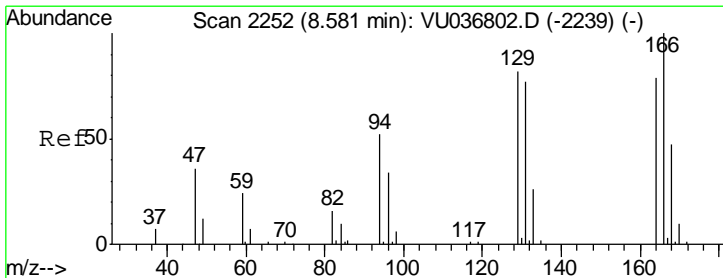
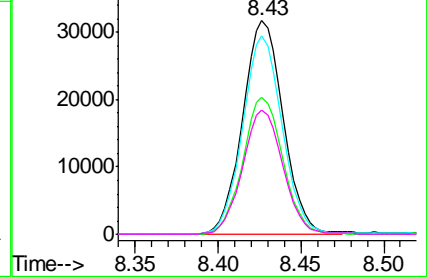
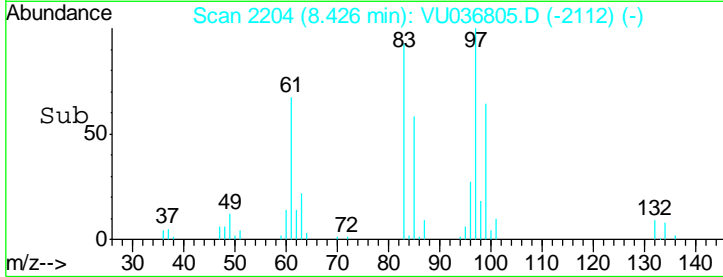
#45  
 1,1,2-Trichloroethane  
 Concen: 7.397 ug/L  
 RT: 8.43 min Scan# 2204  
 Delta R.T. -0.00 min  
 Lab File: VU036805.D  
 Acq: 17 Feb 2020 13:15

Instrument :  
 MSVOA\_U  
 ClientSampled :  
 DBCX8

Tgt Ion	Resp	Lower	Upper
97	54146		
99	63.9	44.1	81.9
83	92.7	63.5	117.9
85	58.1	41.2	76.4

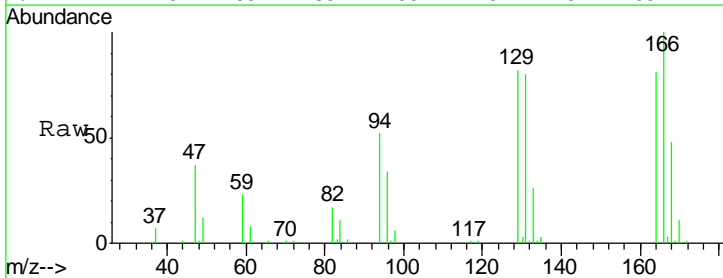


Abundance Ion 96.95 (96.65 to 97.65): VU036805.D (-2112) (-)  
 Ion 99.05 (98.75 to 99.75): VU036805.D (-2112) (-)  
 Ion 82.95 (82.65 to 83.65): VU036805.D (-2112) (-)  
 Ion 85.00 (84.70 to 85.70): VU036805.D (-2112) (-)

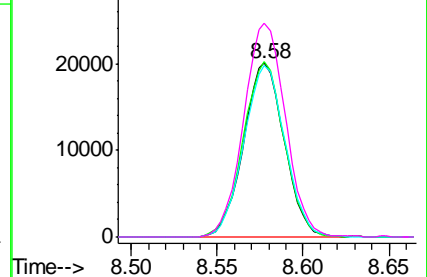
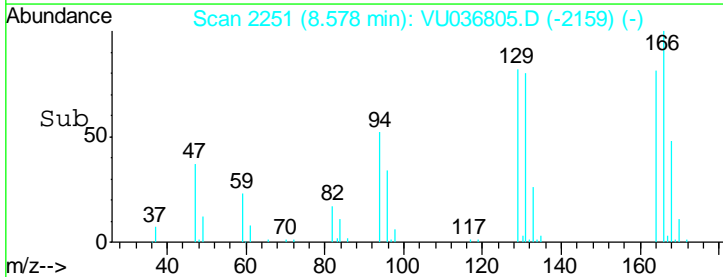


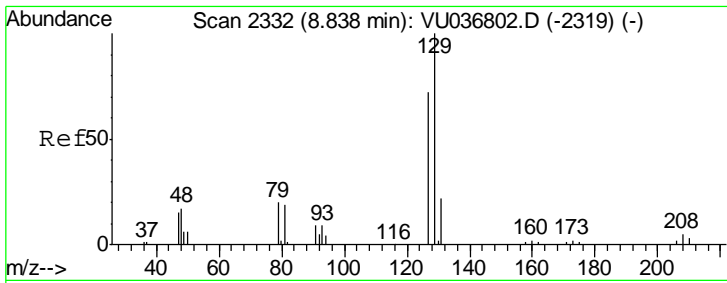
#47  
 Tetrachloroethene  
 Concen: 4.929 ug/L  
 RT: 8.58 min Scan# 2251  
 Delta R.T. -0.00 min  
 Lab File: VU036805.D  
 Acq: 17 Feb 2020 13:15

Tgt Ion	Resp	Lower	Upper
164	32909		
164	100		
129	100.8	68.0	126.4
131	98.6	69.4	128.8
166	123.0	86.6	160.8



Abundance Ion 163.90 (163.60 to 164.60): VU036805.D (-2159) (-)  
 Ion 128.95 (128.65 to 129.65): VU036805.D (-2159) (-)  
 Ion 130.95 (130.65 to 131.65): VU036805.D (-2159) (-)  
 Ion 165.90 (165.60 to 166.60): VU036805.D (-2159) (-)

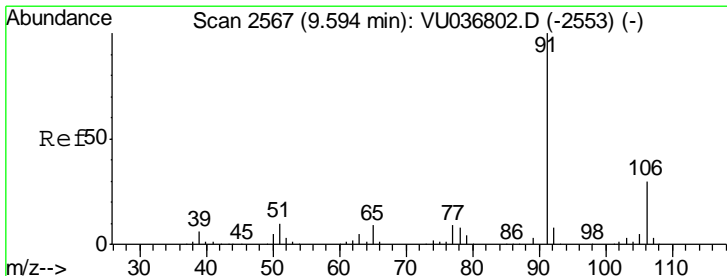
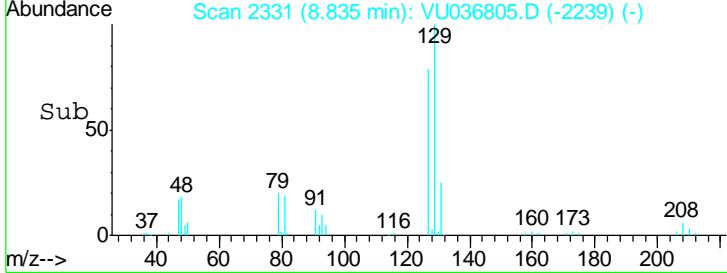
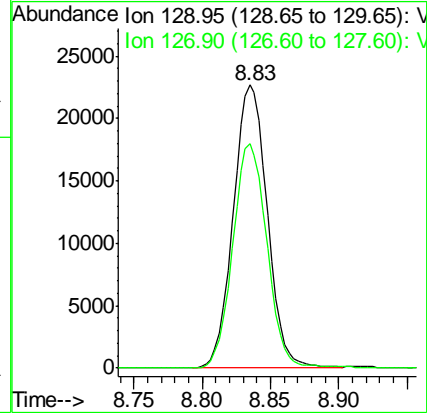
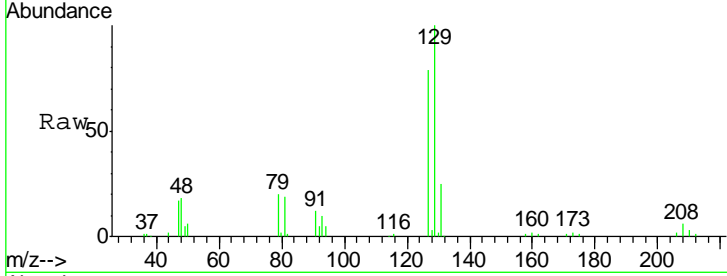




#49  
 Dibromochloromethane  
 Concen: 5.190 ug/L  
 RT: 8.83 min Scan# 2331  
 Delta R.T. -0.00 min  
 Lab File: VU036805.D  
 Acq: 17 Feb 2020 13:15

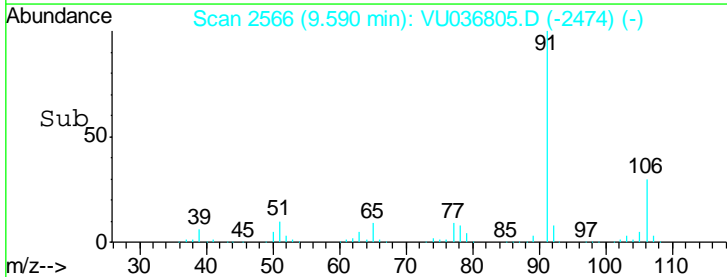
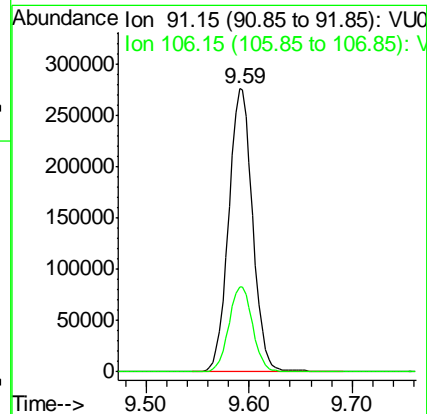
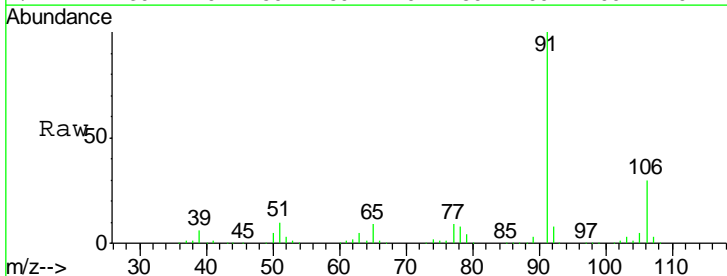
Instrument :  
 MSVOA\_U  
 ClientSampled :  
 DBCX8

Tgt Ion: 129 Resp: 39283  
 Ion Ratio Lower Upper  
 129 100  
 127 79.3 56.7 105.3

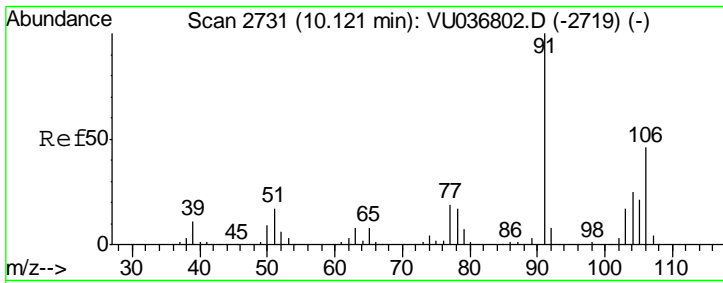


#52  
 Ethylbenzene  
 Concen: 9.687 ug/L  
 RT: 9.59 min Scan# 2566  
 Delta R.T. -0.00 min  
 Lab File: VU036805.D  
 Acq: 17 Feb 2020 13:15

Tgt Ion: 91 Resp: 447719  
 Ion Ratio Lower Upper  
 91 100  
 106 30.1 21.5 39.9



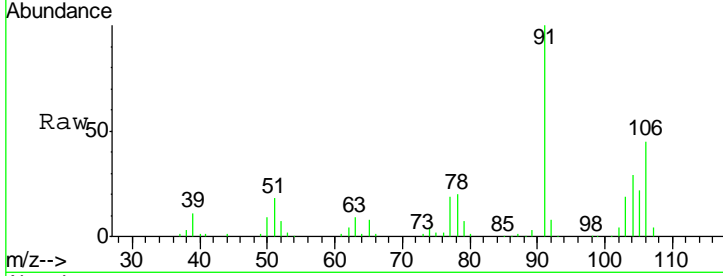




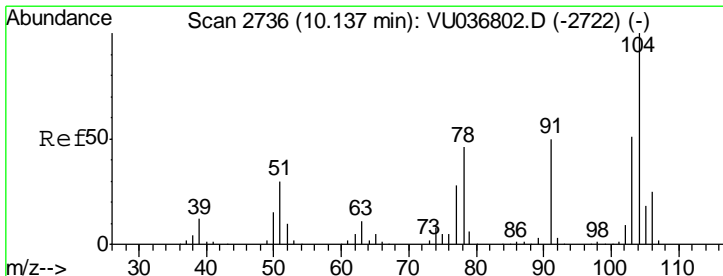
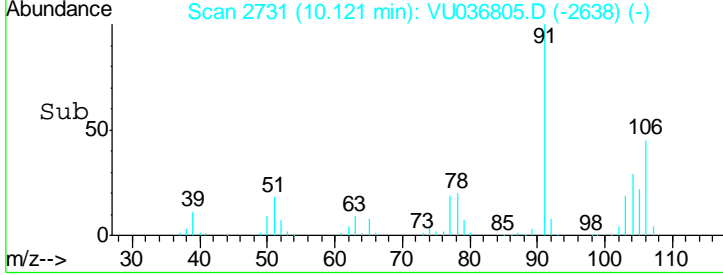
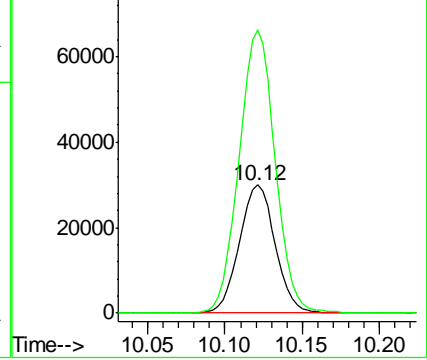
#54  
 o-Xylene  
 Concen: 2.884 ug/L  
 RT: 10.12 min Scan# 2731  
 Delta R.T. -0.00 min  
 Lab File: VU036805.D  
 Acq: 17 Feb 2020 13:15

Instrument :  
 MSVOA\_U  
 ClientSampled :  
 DBCX8

Tgt Ion:106 Resp: 48181  
 Ion Ratio Lower Upper  
 106 100  
 91 220.6 151.1 280.5

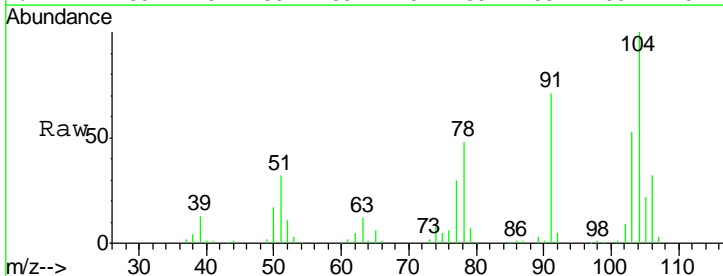


Abundance Ion 106.15 (105.85 to 106.85): V  
 Ion 91.15 (90.85 to 91.85): VU0

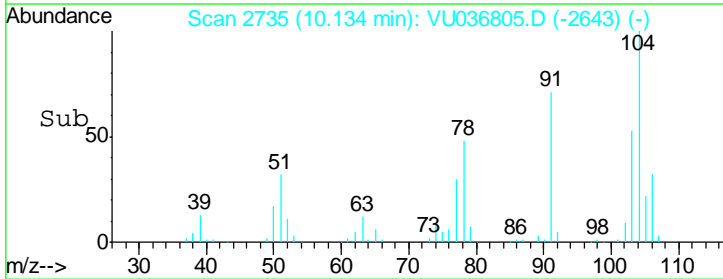
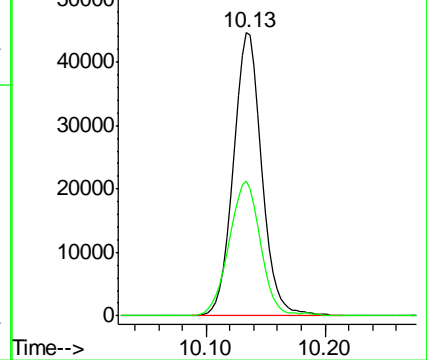


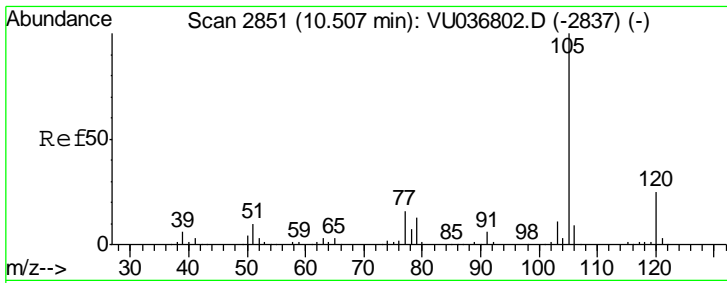
#55  
 Styrene  
 Concen: 2.622 ug/L  
 RT: 10.13 min Scan# 2735  
 Delta R.T. -0.00 min  
 Lab File: VU036805.D  
 Acq: 17 Feb 2020 13:15

Tgt Ion:104 Resp: 73819  
 Ion Ratio Lower Upper  
 104 100  
 78 47.8 33.5 62.3



Abundance Ion 104.10 (103.80 to 104.80): V  
 Ion 78.10 (77.80 to 78.80): VU0

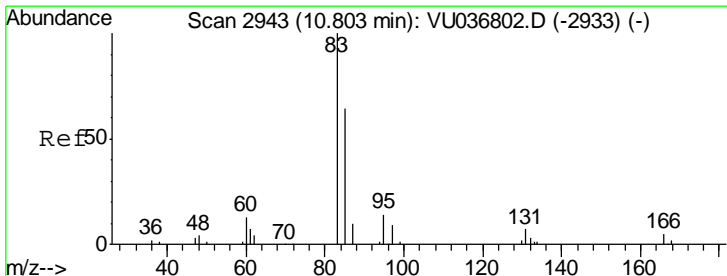
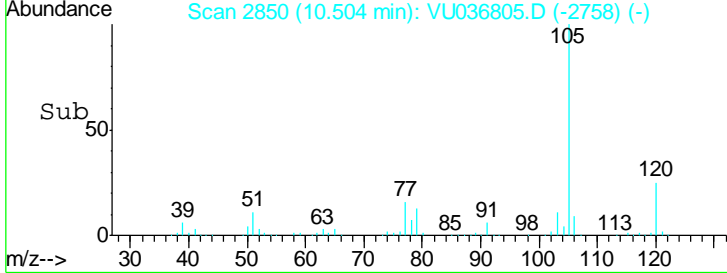
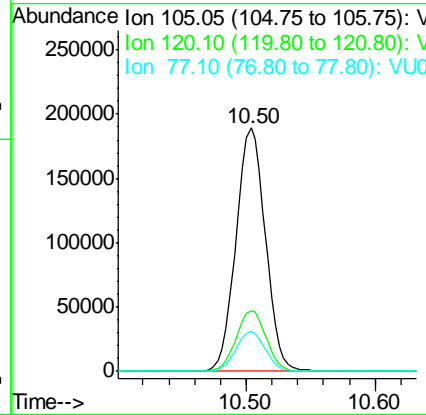
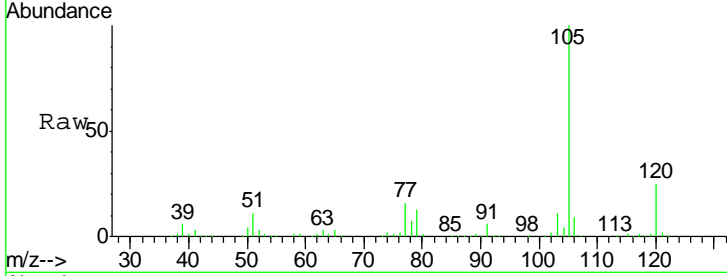




#56  
 Isopropylbenzene  
 Concen: 6.704 ug/L  
 RT: 10.50 min Scan# 2850  
 Delta R.T. -0.00 min  
 Lab File: VU036805.D  
 Acq: 17 Feb 2020 13:15

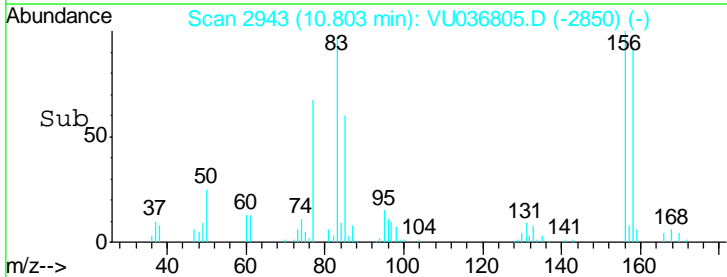
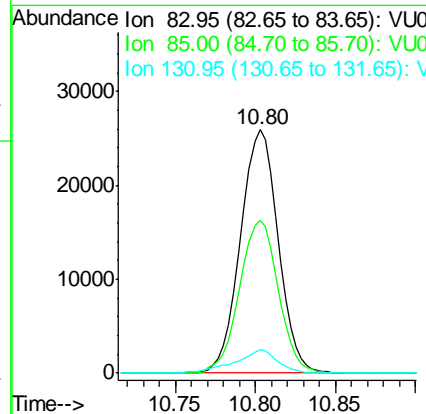
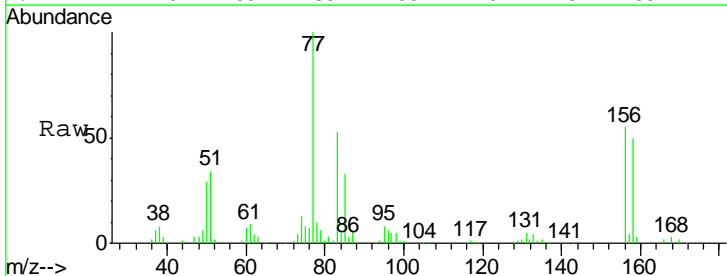
Instrument :  
 MSVOA\_U  
 ClientSampled :  
 DBCX8

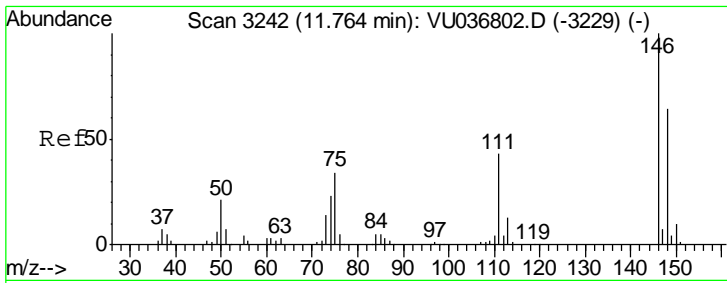
Tgt Ion	Resp	Lower	Upper
105	299689		
120	25.4	20.5	30.7
77	16.4	13.0	19.6



#58  
 1,1,2,2-Tetrachloroethane  
 Concen: 4.341 ug/L  
 RT: 10.80 min Scan# 2943  
 Delta R.T. -0.00 min  
 Lab File: VU036805.D  
 Acq: 17 Feb 2020 13:15

Tgt Ion	Resp	Lower	Upper
83	41595		
85	62.8	45.6	84.6
131	9.6	6.8	10.2

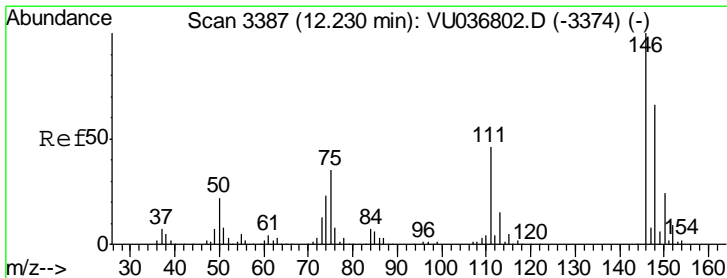
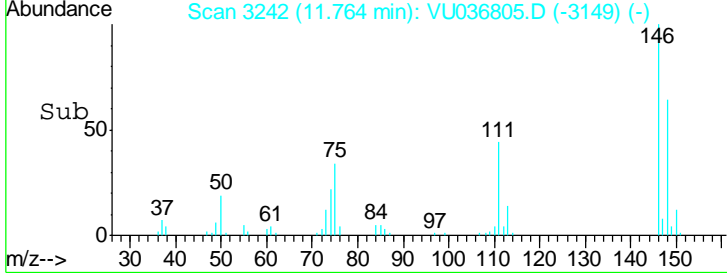
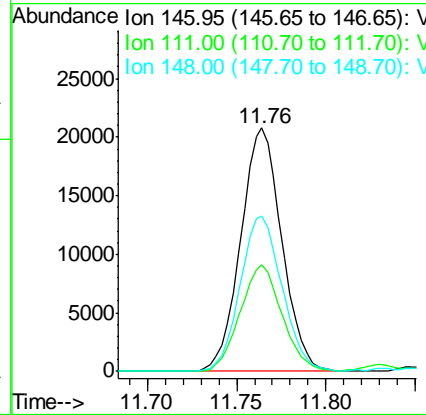
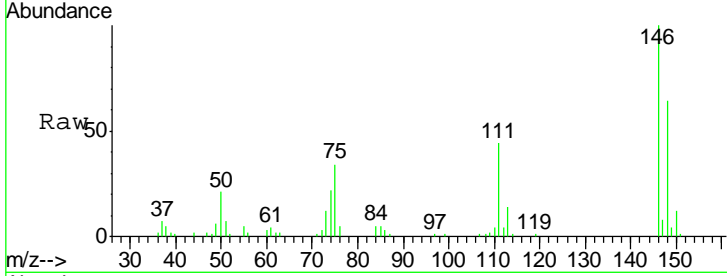




#62  
 1,3-Dichlorobenzene  
 Concen: 1.888 ug/L  
 RT: 11.76 min Scan# 3242  
 Delta R.T. -0.00 min  
 Lab File: VU036805.D  
 Acq: 17 Feb 2020 13:15

Instrument :  
 MSVOA\_U  
 ClientSampled :  
 DBCX8

Tgt Ion	Resp	Lower	Upper
146	100		
111	43.6	30.0	55.8
148	63.9	44.5	82.7



#65  
 1,2-Dichlorobenzene  
 Concen: 1.939 ug/L  
 RT: 12.23 min Scan# 3387  
 Delta R.T. -0.00 min  
 Lab File: VU036805.D  
 Acq: 17 Feb 2020 13:15

Tgt Ion	Resp	Lower	Upper
146	100		
111	45.2	35.9	53.9
148	62.5	50.4	75.6

