

Data File : VU029566.D
 Acq On : 19 Feb 2019 20:01
 Operator : JC/SP
 Sample : K1488-19
 Misc : 25.0mL/MSVOA_U/WATER
 ALS Vial : 24 Sample Multiplier: 1

Instrument :
 MSVOA_U
 ClientSampleId :
 ESXF6

Quant Time: Feb 20 00:14:08 2019
 Quant Method : Z:\VOASRV\HPCHEM1\MSVOA_U\METHOD\SOMUTR021219WMA.M
 Quant Title : TRACE VOA SOM01.0
 QLast Update : Wed Feb 20 00:07:58 2019
 Response via : Initial Calibration

Internal Standards	R.T.	QIon	Response	Conc	Units	Dev(Min)
1) 1,4-Difluorobenzene	5.88	114	206157	5.00	ug/L	0.00
28) Chlorobenzene-d5	9.09	117	198938	5.00	ug/L	0.00
60) 1,4-Dichlorobenzene-d4	11.48	152	107796	5.00	ug/L	0.00

System Monitoring Compounds

4) Vinyl Chloride-d3	1.40	65	54597	3.94	ug/L	0.00
Spiked Amount	5.000	Range	40 - 130	Recovery	=	78.80%
7) Chloroethane-d5	1.68	69	49508	4.05	ug/L	0.00
Spiked Amount	5.000	Range	65 - 130	Recovery	=	81.00%
11) 1,1-Dichloroethene-d2	2.27	63	84338	2.80	ug/L	0.00
Spiked Amount	5.000	Range	60 - 125	Recovery	=	56.00%#
20) 2-Butanone-d5	4.19	46	158367	54.99	ug/L	0.00
Spiked Amount	50.000	Range	40 - 130	Recovery	=	109.98%
24) Chloroform-d	4.65	84	92964	4.22	ug/L	0.00
Spiked Amount	5.000	Range	70 - 125	Recovery	=	84.40%
26) 1,2-Dichloroethane-d4	5.31	65	56528	4.82	ug/L	0.00
Spiked Amount	5.000	Range	70 - 130	Recovery	=	96.40%
32) Benzene-d6	5.34	84	209176	4.37	ug/L	0.00
Spiked Amount	5.000	Range	70 - 125	Recovery	=	87.40%
36) 1,2-Dichloropropane-d6	6.33	67	66868	4.73	ug/L	0.00
Spiked Amount	5.000	Range	60 - 140	Recovery	=	94.60%
41) Toluene-d8	7.56	98	197600	4.19	ug/L	0.00
Spiked Amount	5.000	Range	70 - 130	Recovery	=	83.80%
43) trans-1,3-Dichloropropene-	7.85	79	25071	3.97	ug/L	0.00
Spiked Amount	5.000	Range	55 - 130	Recovery	=	79.40%
46) 2-Hexanone-d5	8.31	63	149072	51.28	ug/L	0.00
Spiked Amount	50.000	Range	45 - 130	Recovery	=	102.56%
57) 1,1,2,2-Tetrachloroethane-	10.43	84	60815	4.95	ug/L	0.00
Spiked Amount	5.000	Range	65 - 120	Recovery	=	99.00%
64) 1,2-Dichlorobenzene-d4	11.86	152	91092	4.58	ug/L	0.00
Spiked Amount	5.000	Range	80 - 120	Recovery	=	91.60%

Target Compounds

						Qvalue
5) Vinyl chloride	1.40	62	55122	2.776	ug/L #	52
8) Chloroethane	1.55	64	199489	15.431	ug/L #	52
10) 1,1,2-Trichloro-1,2,2-trif	2.27	101	931	0.052	ug/L #	22
12) 1,1-Dichloroethene	2.28	96	4578	0.270	ug/L #	1
13) Acetone	2.32	43	4198	1.605	ug/L	87
14) Carbon disulfide	2.48	76	5108	0.091	ug/L #	91
18) trans-1,2-Dichloroethene	2.98	96	48310	2.670	ug/L	95
22) cis-1,2-Dichloroethene	4.22	96	1192648	71.668	ug/L	96
25) Chloroform	4.67	83	11552	0.424	ug/L	100
34) Trichloroethene	6.19	95	1751	0.106	ug/L	83
35) Methylcyclohexane	6.33	83	15204	0.549	ug/L #	22
37) 1,2-Dichloropropane	6.33	63	6945	0.474	ug/L #	87
39) cis-1,3-Dichloropropene	7.23	75	1981	0.086	ug/L	85
40) 4-Methyl-2-pentanone	7.47	43	2557	0.302	ug/L #	77
48) 2-Hexanone	8.37	43	6161	1.000	ug/L #	93
53) m,p-xylene	9.37	106	1494	0.050	ug/L	78
59) 1,2,3-Trichloropropane	11.48	75	11338	1.205	ug/L	99

Data Path : Z:\VOASRV\HPCHEM1\MSVOA_U\DATA\VU021919\
Quantitation Report (Not Reviewed)

Data File : VU029566.D
Acq On : 19 Feb 2019 20:01
Operator : JC/SP
Sample : K1488-19
Misc : 25.0mL/MSVOA_U/WATER
ALS Vial : 24 Sample Multiplier: 1

Instrument :
MSVOA_U
ClientSampleId :
ESXF6

Quant Time: Feb 20 00:14:08 2019
Quant Method : Z:\VOASRV\HPCHEM1\MSVOA_U\METHOD\SOMUTR021219WMA.M
Quant Title : TRACE VOA SOM01.0
QLast Update : Wed Feb 20 00:07:58 2019
Response via : Initial Calibration

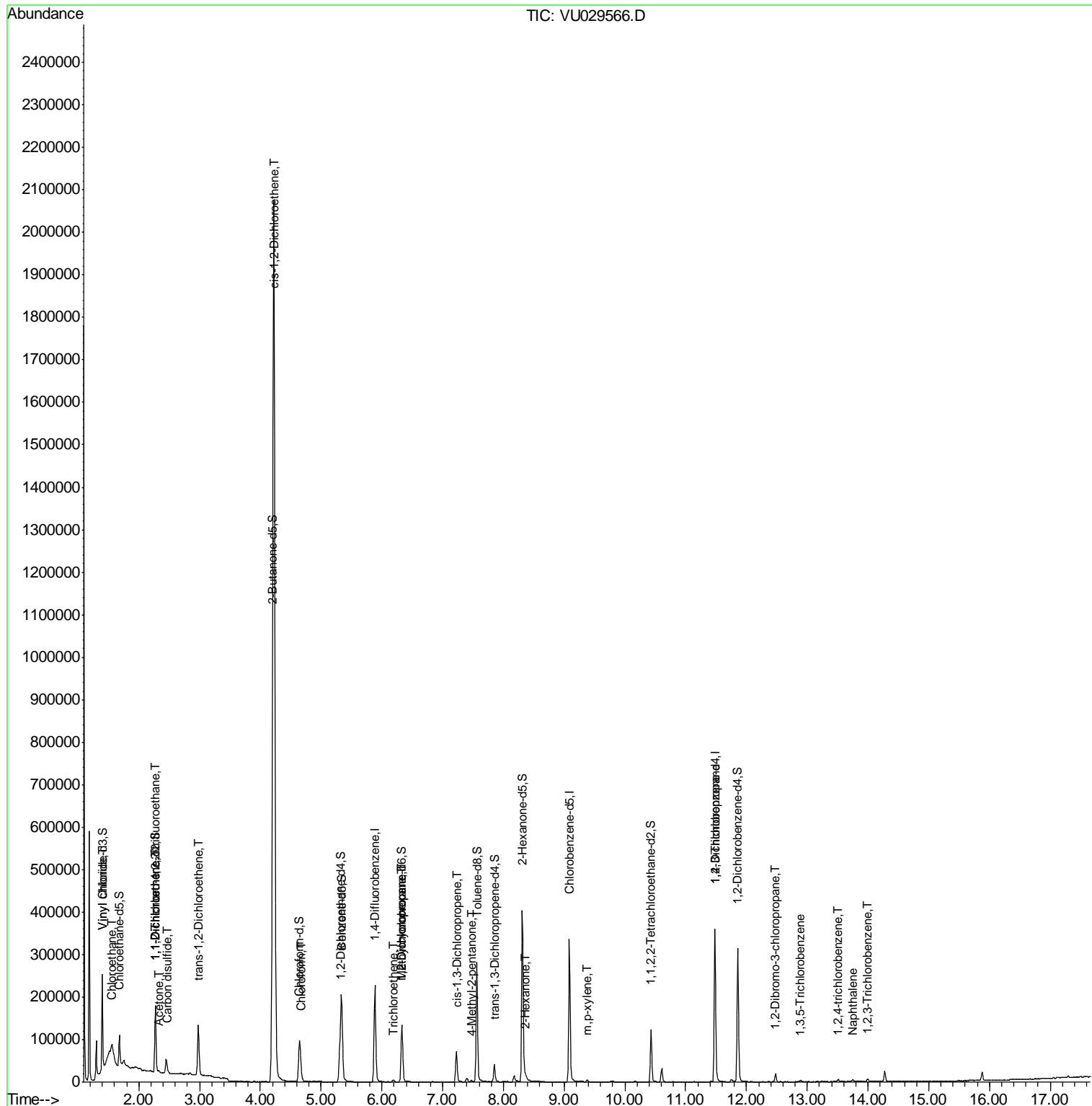
Internal Standards	R.T.	QIon	Response	Conc	Units	Dev(Min)
66) 1,2-Dibromo-3-chloropropan	12.48	75	578	0.257	ug/L #	1
67) 1,3,5-Trichlorobenzene	12.89	180	1730	0.055	ug/L #	91
68) 1,2,4-trichlorobenzene	13.51	180	2210	0.083	ug/L #	88
69) Naphthalene	13.75	128	6192	0.134	ug/L #	91
70) 1,2,3-Trichlorobenzene	13.99	180	2695	0.106	ug/L	90

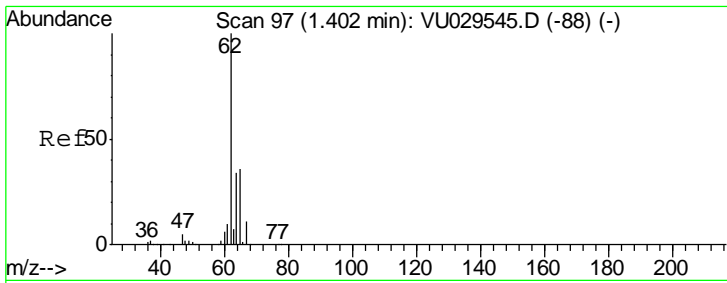
(#) = qualifier out of range (m) = manual integration (+) = signals summed

Data File : VU029566.D
Acq On : 19 Feb 2019 20:01
Operator : JC/SP
Sample : K1488-19
Misc : 25.0mL/MSVOA_U/WATER
ALS Vial : 24 Sample Multiplier: 1

Instrument :
MSVOA_U
Client Sampled :
ESXF6

Quant Time: Feb 20 00:14:08 2019
Quant Method : Z:\VOASRV\HPCHEM1\MSVOA_U\METHOD\SOMUTR021219WMA.M
Quant Title : TRACE VOA SOM01.0
QLast Update : Wed Feb 20 00:07:58 2019
Response via : Initial Calibration

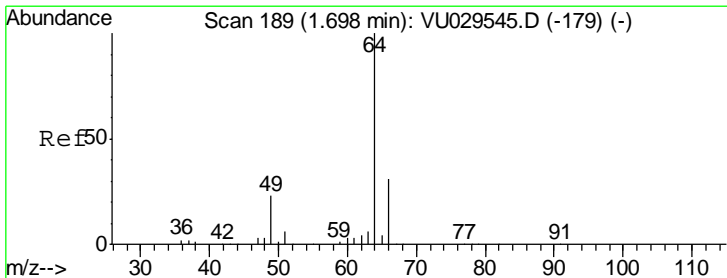
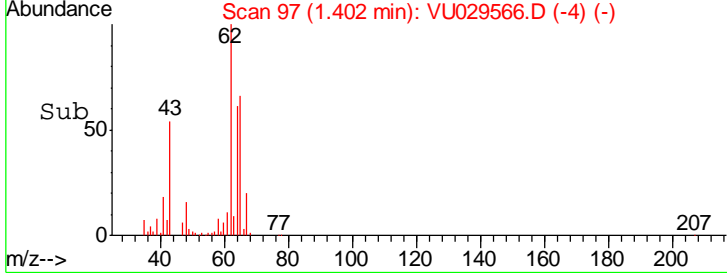
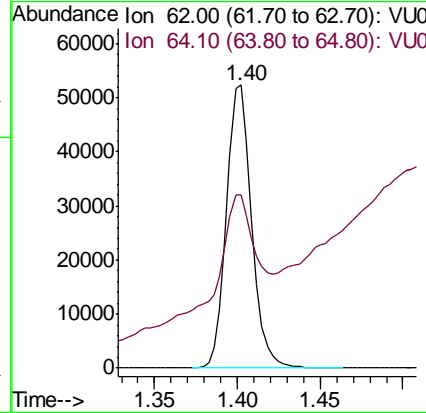
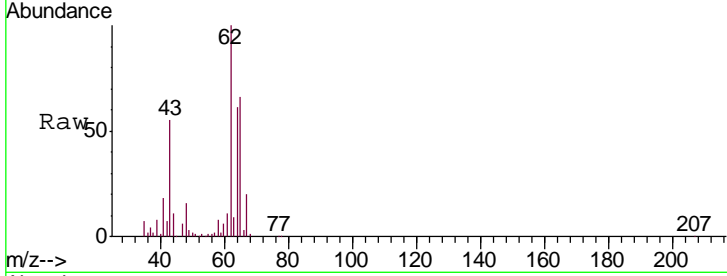




#5
 Vinyl chloride
 Concen: 2.776 ug/L
 RT: 1.40 min Scan# 97
 Delta R.T. 0.00 min
 Lab File: VU029566.D
 Acq: 19 Feb 2019 20:01

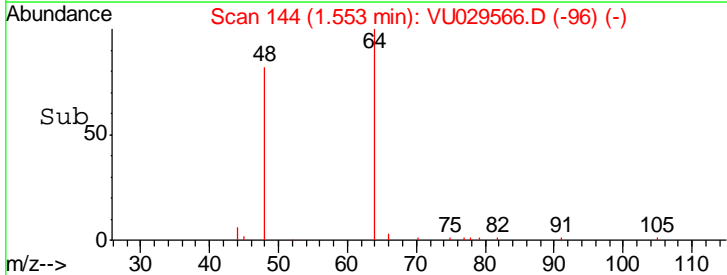
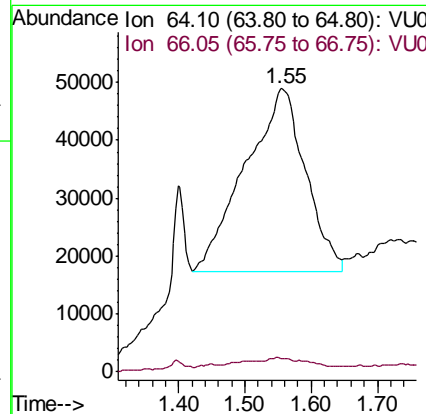
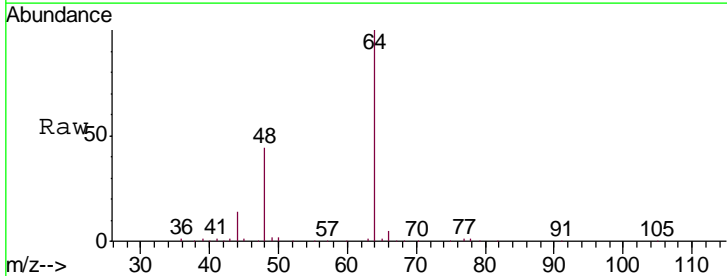
Instrument : MSVOA_U
 ClientSampled : ESXF6

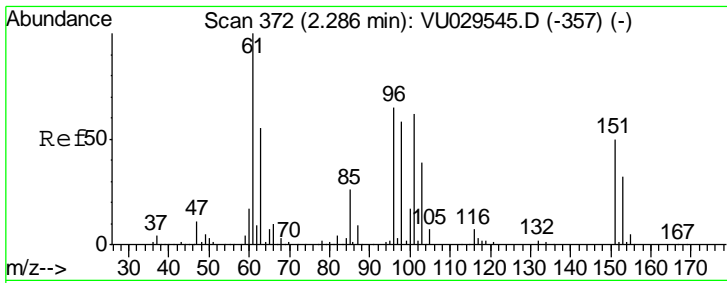
Tgt Ion: 62 Resp: 55122
 Ion Ratio Lower Upper
 62 100
 64 61.1 23.5 43.7#



#8
 Chloroethane
 Concen: 15.431 ug/L
 RT: 1.55 min Scan# 144
 Delta R.T. -0.14 min
 Lab File: VU029566.D
 Acq: 19 Feb 2019 20:01

Tgt Ion: 64 Resp: 199489
 Ion Ratio Lower Upper
 64 100
 66 4.9 22.0 40.8#

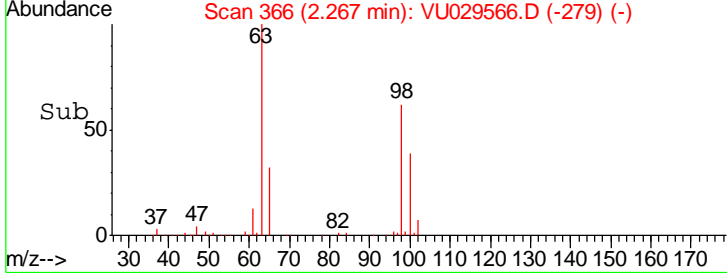
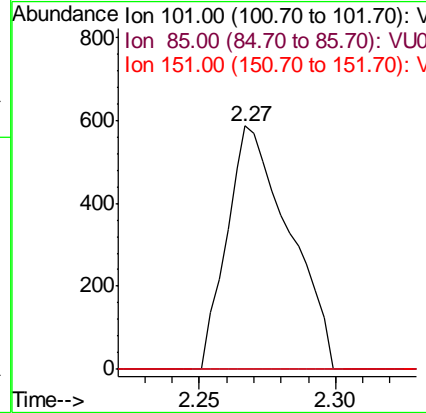
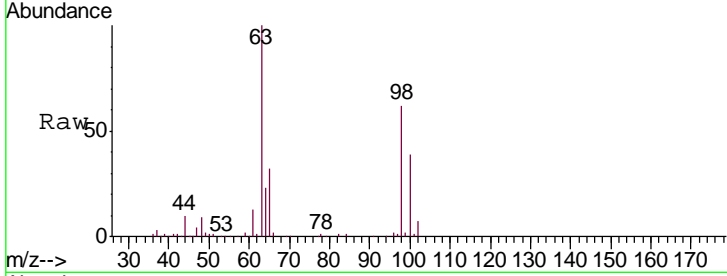




#10
 1,1,2-Trichloro-1,2,2-trifluoroethane
 Concen: 0.052 ug/L
 RT: 2.27 min Scan# 366
 Delta R.T. -0.02 min
 Lab File: VU029566.D
 Acq: 19 Feb 2019 20:01

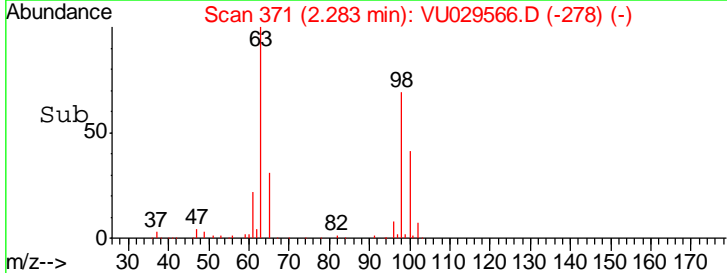
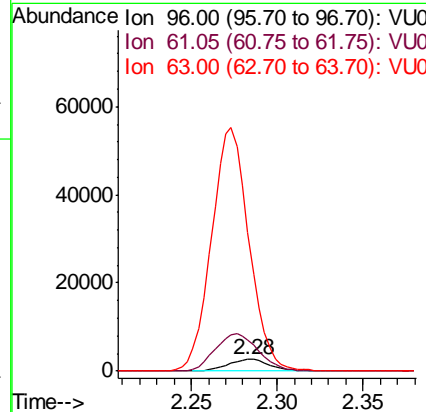
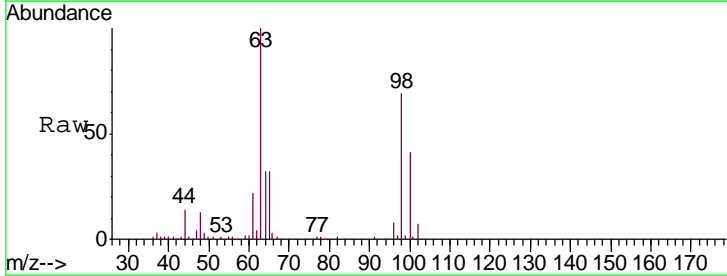
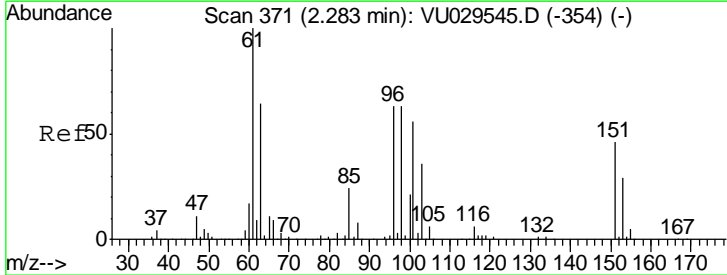
Instrument :
 MSVOA_U
 ClientSampled :
 ESXF6

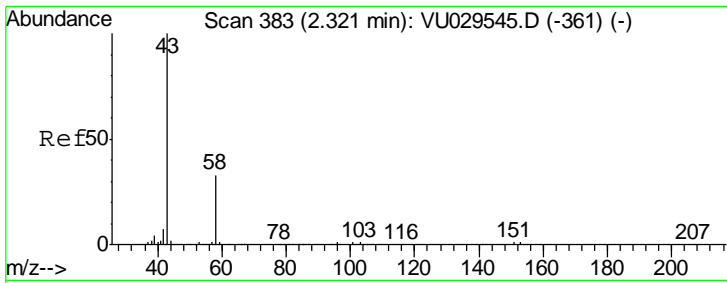
Tgt Ion	Resp	Lower	Upper
101	931		
85	10.8	35.1	52.7#
151	0.0	67.0	100.6#



#12
 1,1-Dichloroethene
 Concen: 0.270 ug/L
 RT: 2.28 min Scan# 371
 Delta R.T. 0.00 min
 Lab File: VU029566.D
 Acq: 19 Feb 2019 20:01

Tgt Ion	Resp	Lower	Upper
96	4578		
61	270.0	115.1	213.7#
63	1205.5	83.5	155.1#

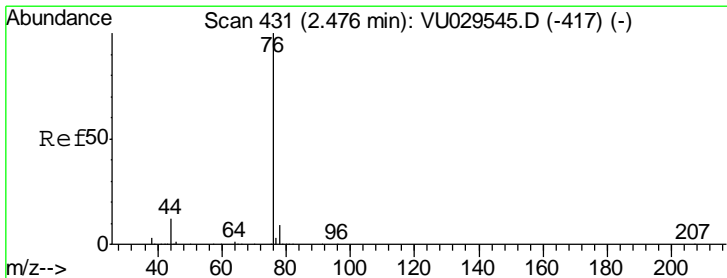
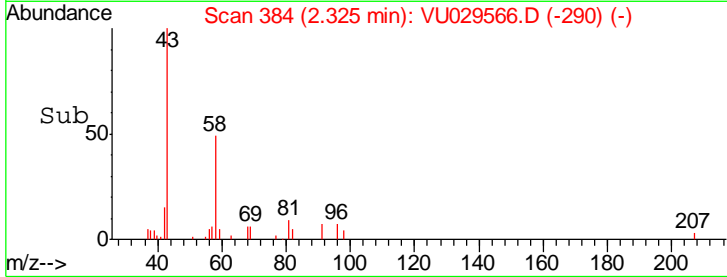
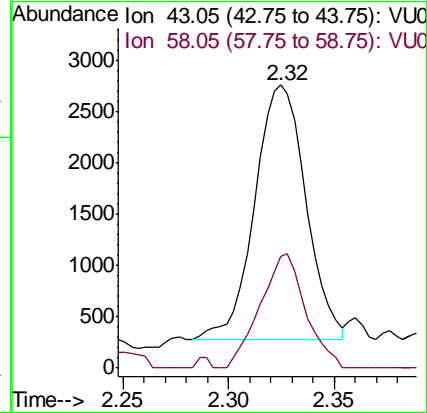
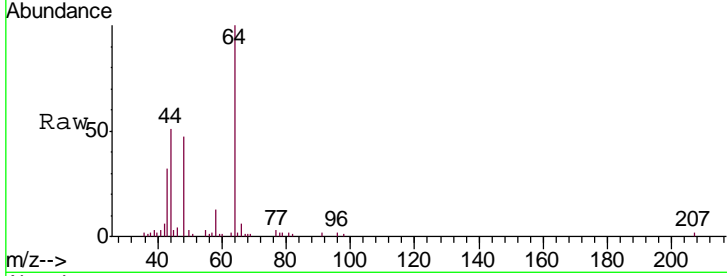




#13
 Acetone
 Concen: 1.605 ug/L
 RT: 2.32 min Scan# 384
 Delta R.T. 0.00 min
 Lab File: VU029566.D
 Acq: 19 Feb 2019 20:01

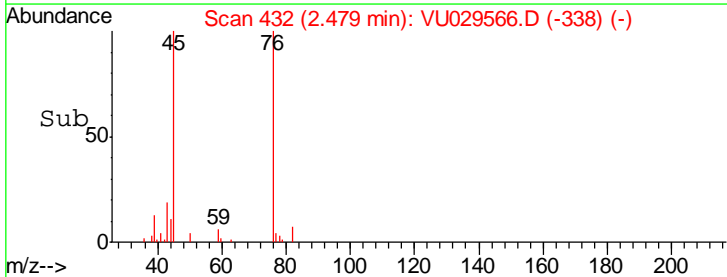
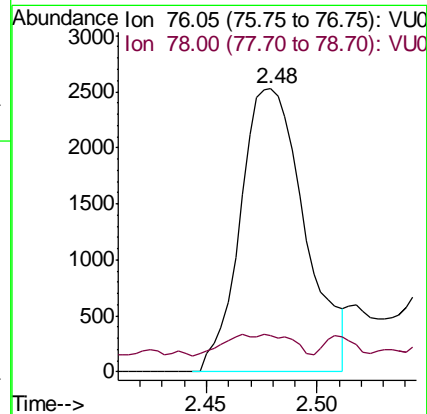
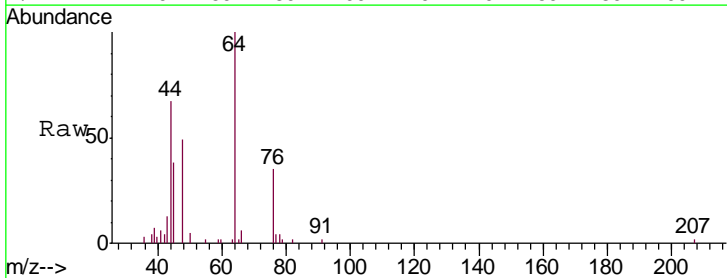
Instrument : MSVOA_U
 ClientSampled : ESXF6

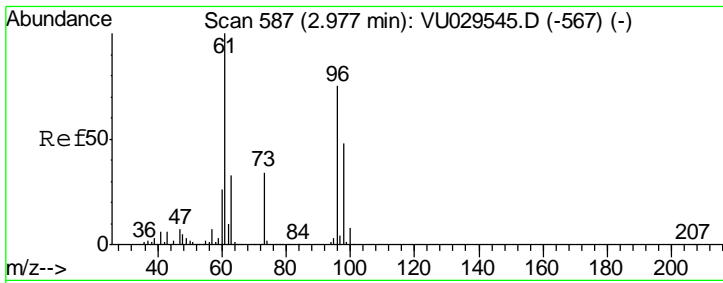
Tgt Ion: 43 Resp: 4198
 Ion Ratio Lower Upper
 43 100
 58 39.7 0.0 65.0



#14
 Carbon disulfide
 Concen: 0.091 ug/L
 RT: 2.48 min Scan# 432
 Delta R.T. 0.00 min
 Lab File: VU029566.D
 Acq: 19 Feb 2019 20:01

Tgt Ion: 76 Resp: 5108
 Ion Ratio Lower Upper
 76 100
 78 12.7 7.5 11.3#

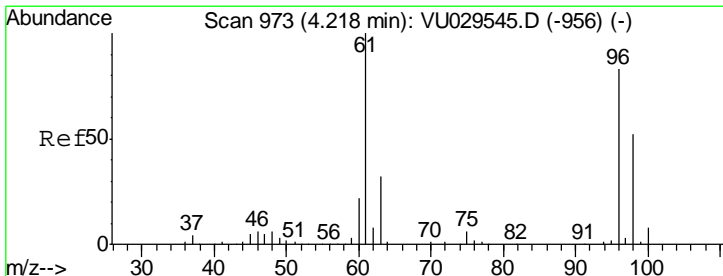
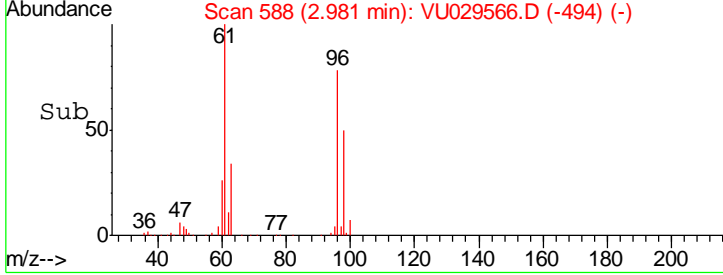
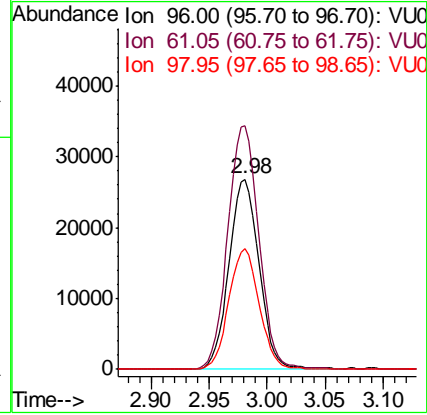
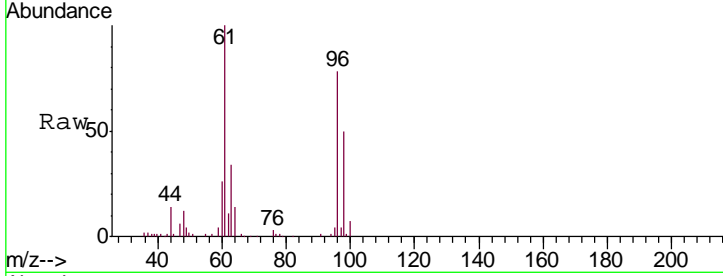




#18
 trans-1,2-Dichloroethene
 Concen: 2.670 ug/L
 RT: 2.98 min Scan# 588
 Delta R.T. 0.00 min
 Lab File: VU029566.D
 Acq: 19 Feb 2019 20:01

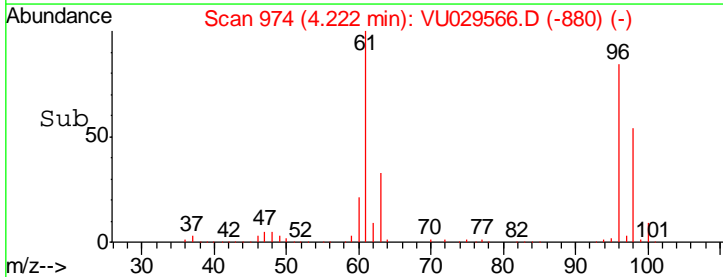
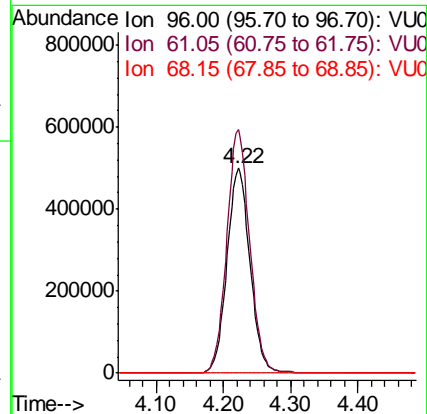
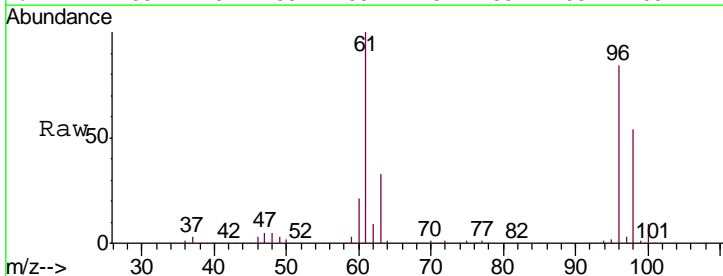
Instrument : MSVOA_U
 ClientSampled : ESXF6

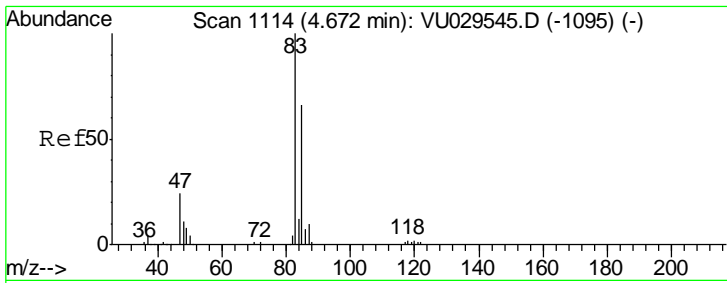
Tgt Ion	Resp	Lower	Upper
96	48310		
Ion Ratio			
96	100		
61	127.9	95.4	177.2
98	63.6	45.8	85.2



#22
 cis-1,2-Dichloroethene
 Concen: 71.668 ug/L
 RT: 4.22 min Scan# 974
 Delta R.T. 0.00 min
 Lab File: VU029566.D
 Acq: 19 Feb 2019 20:01

Tgt Ion	Resp	Lower	Upper
96	1192648		
Ion Ratio			
96	100		
61	119.0	79.9	148.5
68	0.0	0.0	0.0

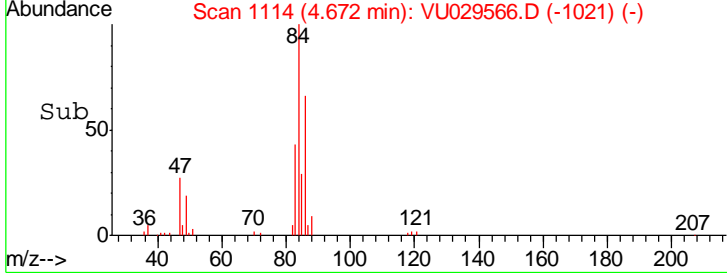
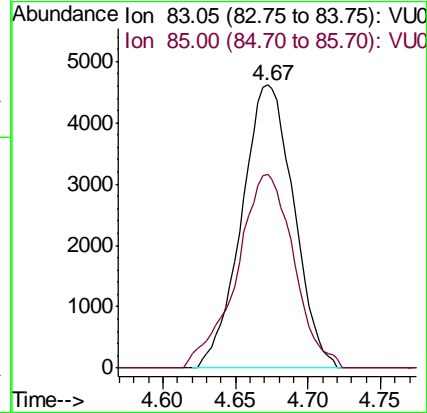
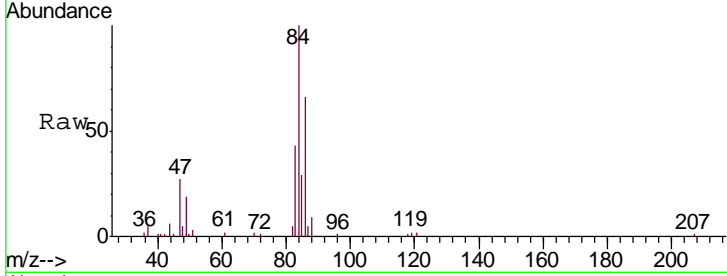




#25
 Chloroform
 Concen: 0.424 ug/L
 RT: 4.67 min Scan# 1114
 Delta R.T. 0.00 min
 Lab File: VU029566.D
 Acq: 19 Feb 2019 20:01

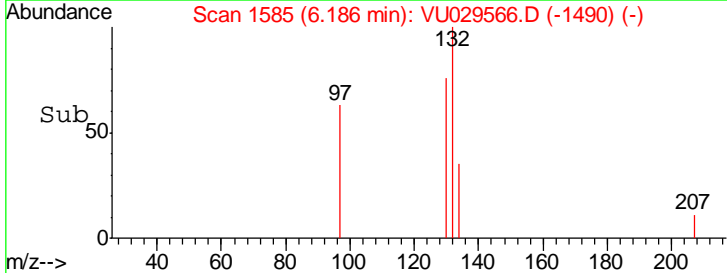
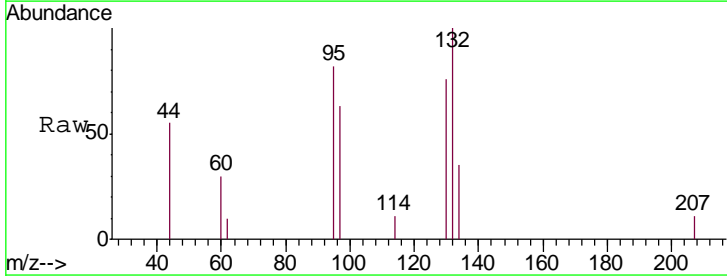
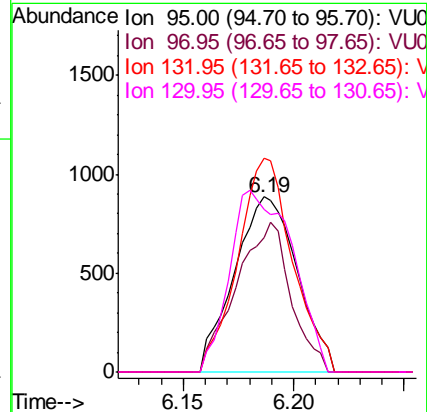
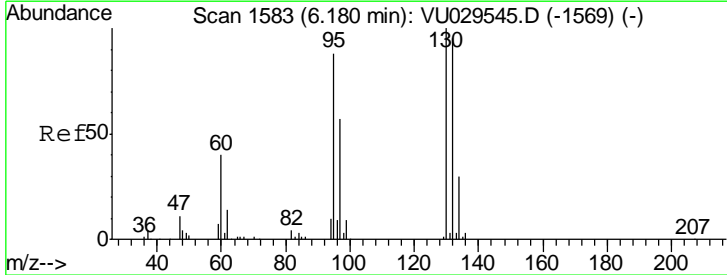
Instrument :
 MSVOA_U
 ClientSampled :
 ESXF6

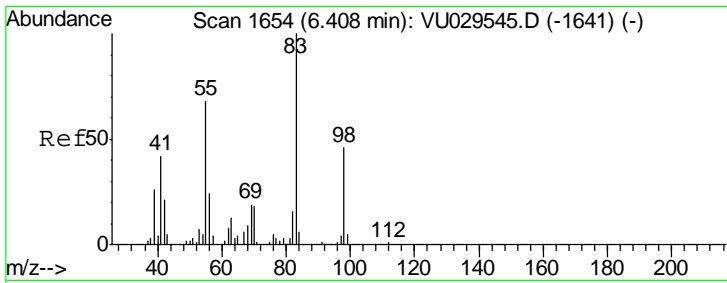
Tgt Ion	Resp	Lower	Upper
83	11552		
83	100		
85	68.2	47.8	88.8



#34
 Trichloroethene
 Concen: 0.106 ug/L
 RT: 6.19 min Scan# 1585
 Delta R.T. 0.01 min
 Lab File: VU029566.D
 Acq: 19 Feb 2019 20:01

Tgt Ion	Resp	Lower	Upper
95	1751		
95	100		
97	76.5	46.3	86.1
132	122.0	72.9	135.3
130	92.8	79.2	147.0

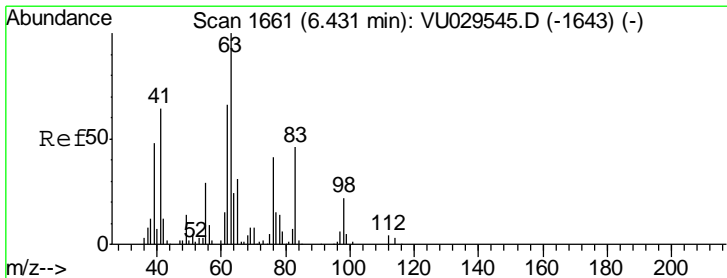
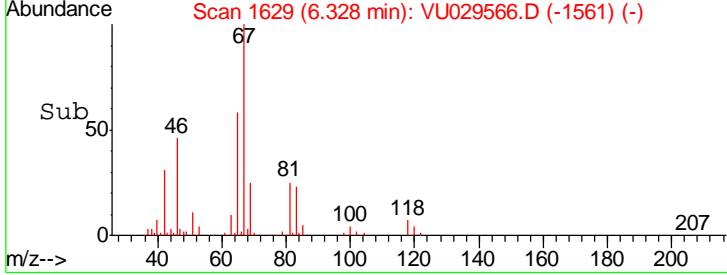
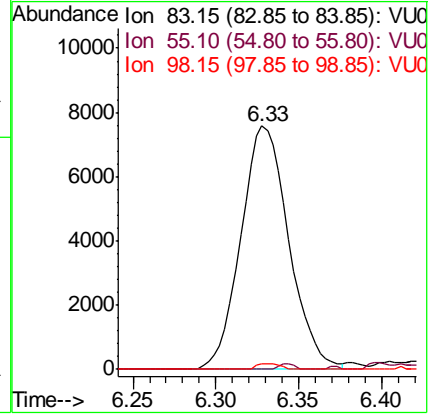
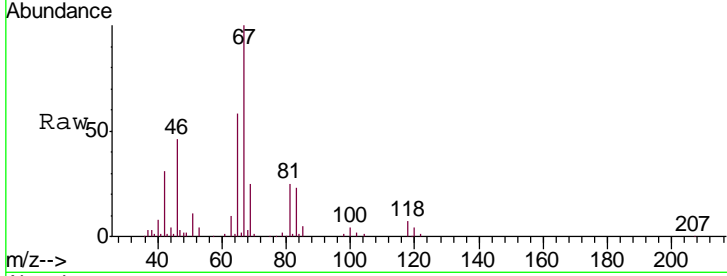




#35
 Methylcyclohexane
 Concen: 0.549 ug/L
 RT: 6.33 min Scan# 1629
 Delta R.T. -0.08 min
 Lab File: VU029566.D
 Acq: 19 Feb 2019 20:01

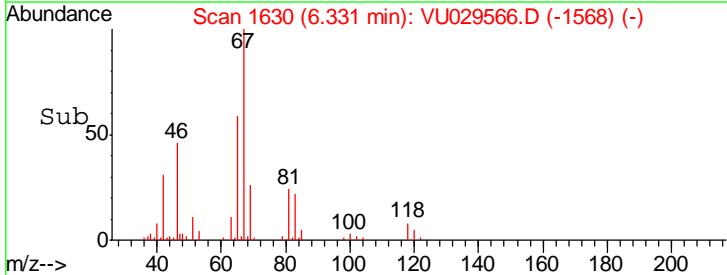
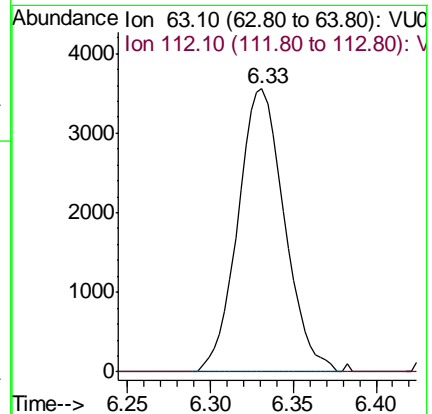
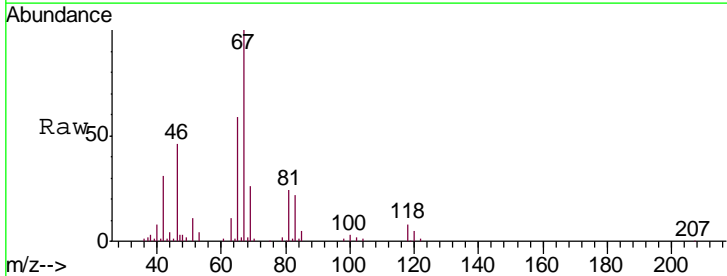
Instrument :
 MSVOA_U
 ClientSampled :
 ESXF6

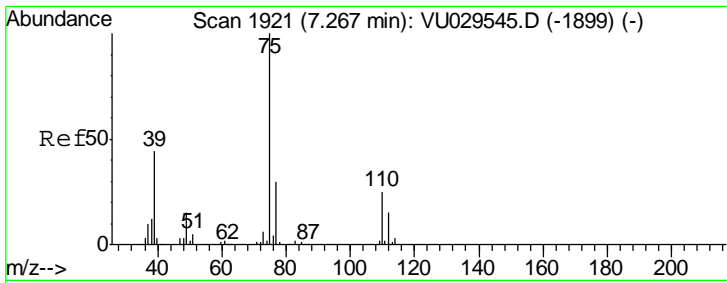
Tgt Ion	Resp	Lower	Upper
83	15204		
55	0.7	55.9	83.9#
98	1.2	38.6	57.8#



#37
 1,2-Dichloropropane
 Concen: 0.474 ug/L
 RT: 6.33 min Scan# 1630
 Delta R.T. -0.10 min
 Lab File: VU029566.D
 Acq: 19 Feb 2019 20:01

Tgt Ion	Resp	Lower	Upper
63	6945		
112	0.0	3.5	5.3#

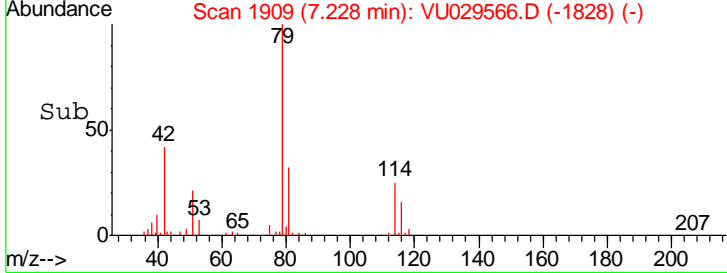
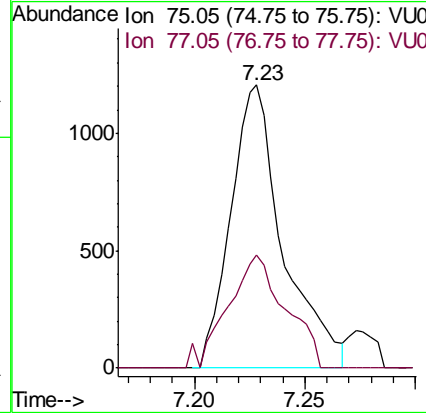
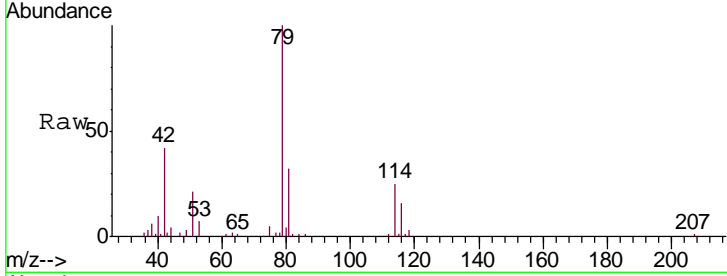




#39
 cis-1,3-Dichloropropene
 Concen: 0.086 ug/L
 RT: 7.23 min Scan# 1909
 Delta R.T. -0.04 min
 Lab File: VU029566.D
 Acq: 19 Feb 2019 20:01

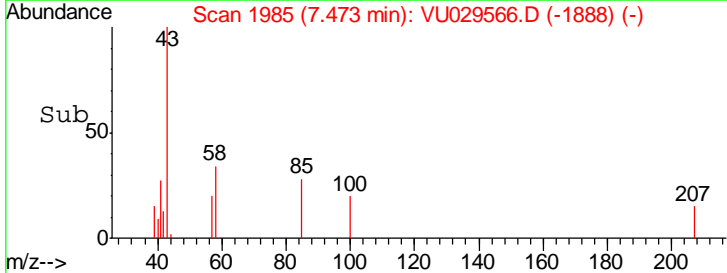
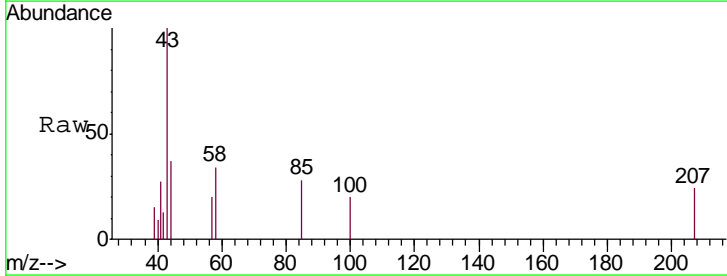
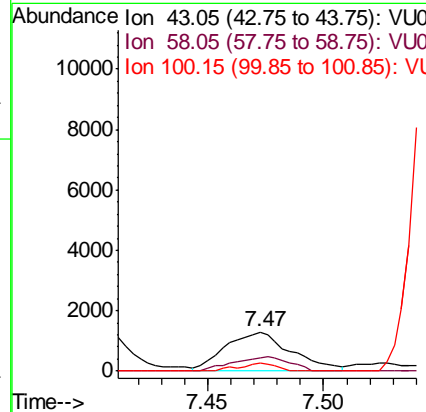
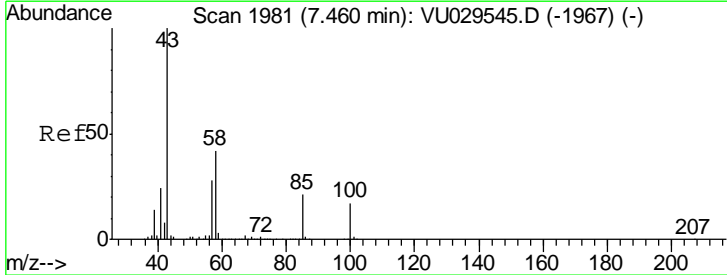
Instrument : MSVOA_U
 ClientSampled : ESXF6

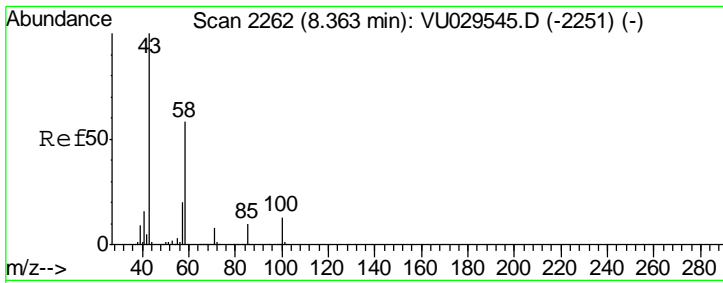
Tgt Ion	Resp	Lower	Upper
75	1981		
75	100		
77	40.0	22.3	41.3



#40
 4-Methyl-2-pentanone
 Concen: 0.302 ug/L
 RT: 7.47 min Scan# 1985
 Delta R.T. 0.01 min
 Lab File: VU029566.D
 Acq: 19 Feb 2019 20:01

Tgt Ion	Resp	Lower	Upper
43	2557		
43	100		
58	31.8	33.4	50.2#
100	0.0	14.4	21.6#

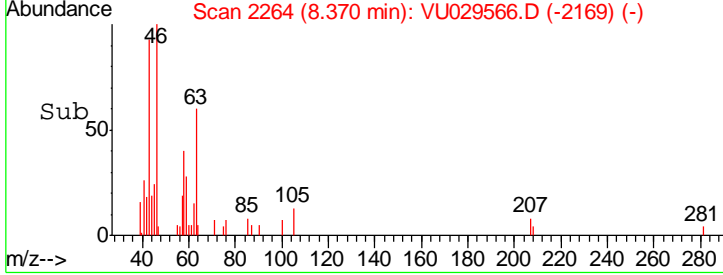
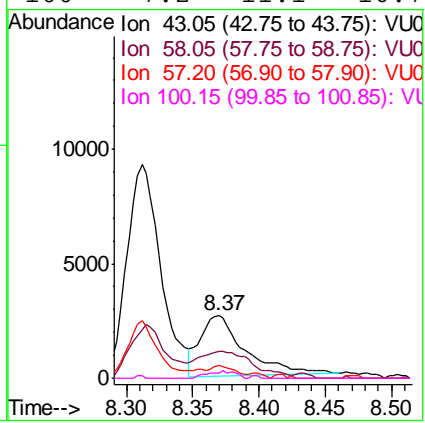
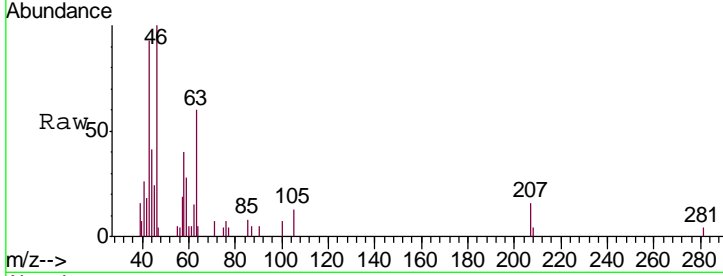




#48
 2-Hexanone
 Concen: 1.000 ug/L
 RT: 8.37 min Scan# 2264
 Delta R.T. 0.01 min
 Lab File: VU029566.D
 Acq: 19 Feb 2019 20:01

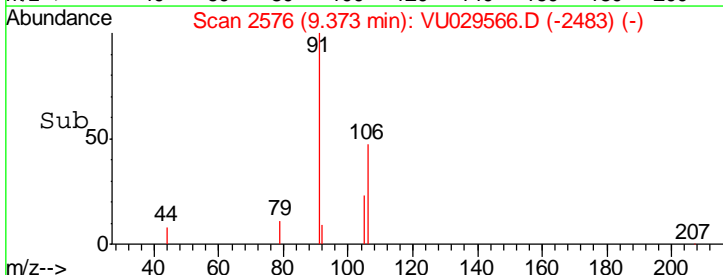
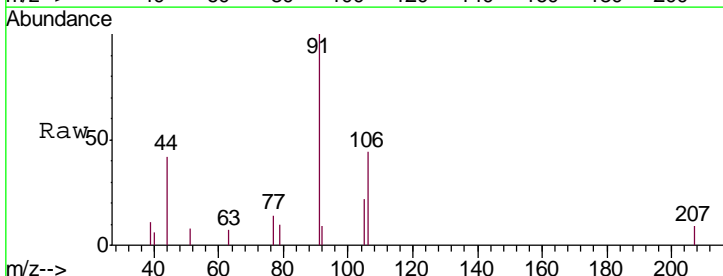
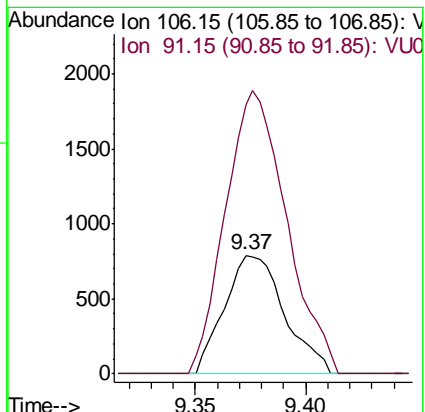
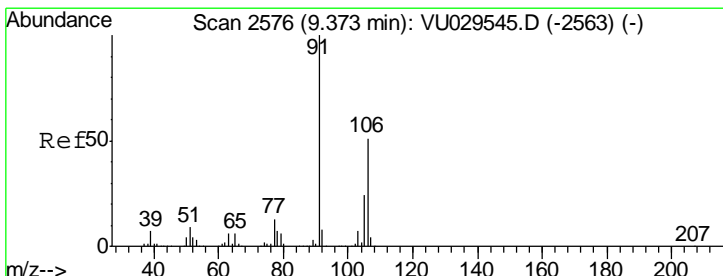
Instrument : MSVOA_U
 ClientSampled : ESXF6

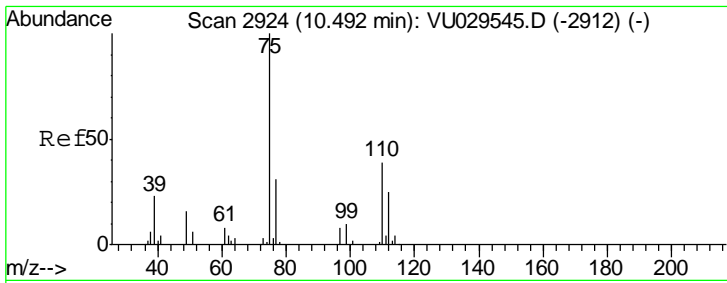
Tgt Ion	Resp	Lower	Upper
43	100		
58	54.3	45.7	68.5
57	16.2	16.4	24.6#
100	7.2	11.1	16.7#



#53
 m,p-xylene
 Concen: 0.050 ug/L
 RT: 9.37 min Scan# 2576
 Delta R.T. 0.00 min
 Lab File: VU029566.D
 Acq: 19 Feb 2019 20:01

Tgt Ion	Resp	Lower	Upper
106	100		
91	226.9	135.7	251.9

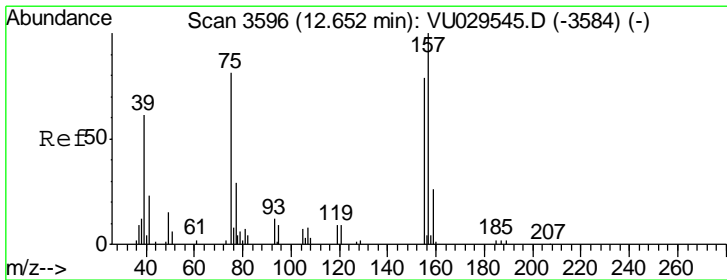
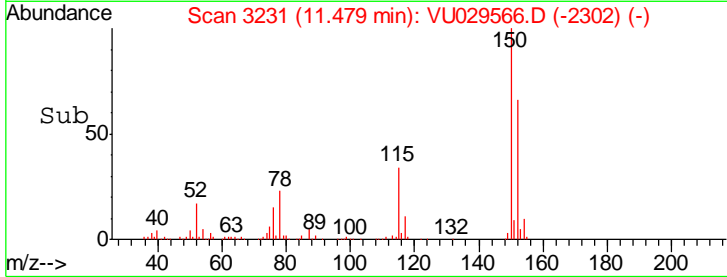
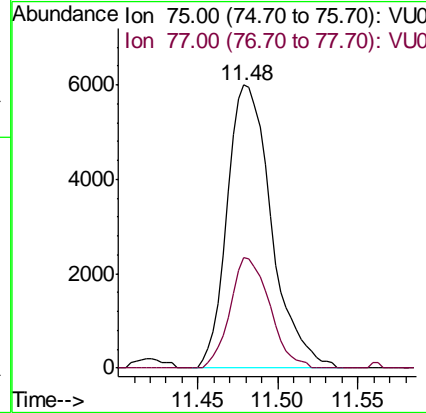
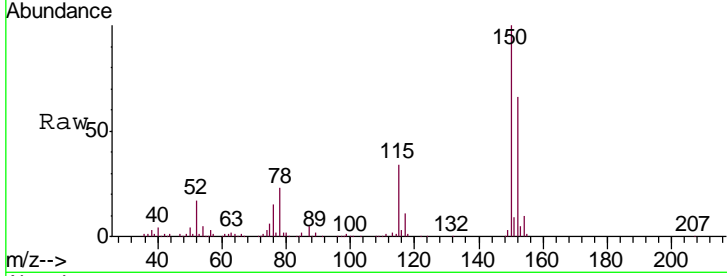




#59
 1,2,3-Trichloropropane
 Concen: 1.205 ug/L
 RT: 11.48 min Scan# 3231
 Delta R.T. 0.99 min
 Lab File: VU029566.D
 Acq: 19 Feb 2019 20:01

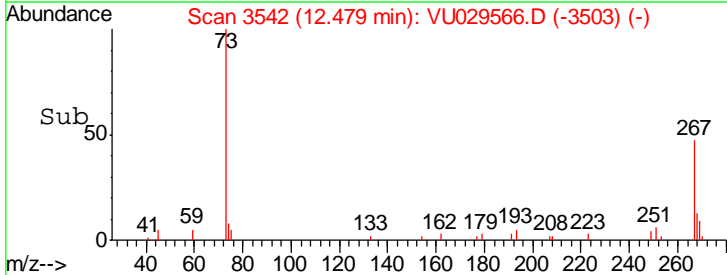
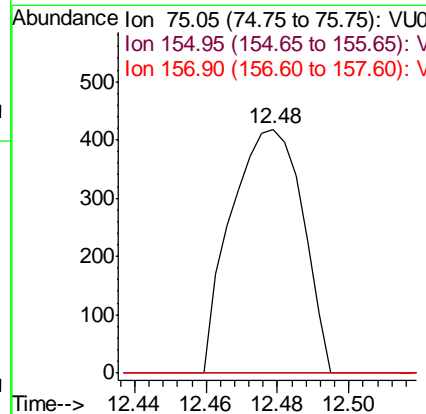
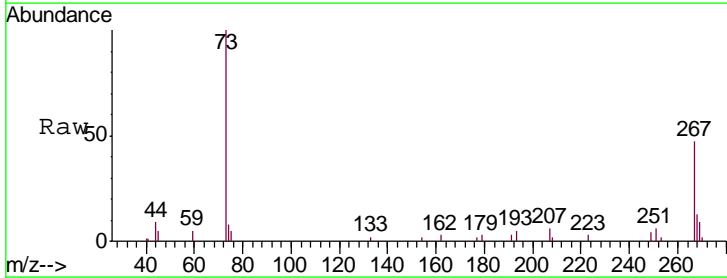
Instrument : MSVOA_U
 ClientSampled : ESXF6

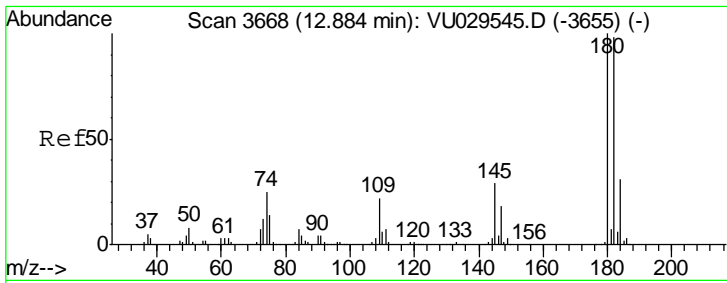
Tgt Ion: 75 Resp: 11338
 Ion Ratio Lower Upper
 75 100
 77 34.9 28.2 42.2



#66
 1,2-Dibromo-3-chloropropane
 Concen: 0.257 ug/L
 RT: 12.48 min Scan# 3542
 Delta R.T. -0.17 min
 Lab File: VU029566.D
 Acq: 19 Feb 2019 20:01

Tgt Ion: 75 Resp: 578
 Ion Ratio Lower Upper
 75 100
 155 0.0 75.3 112.9#
 157 0.0 103.0 154.4#

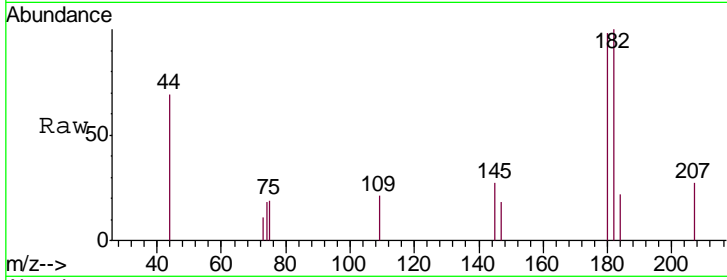




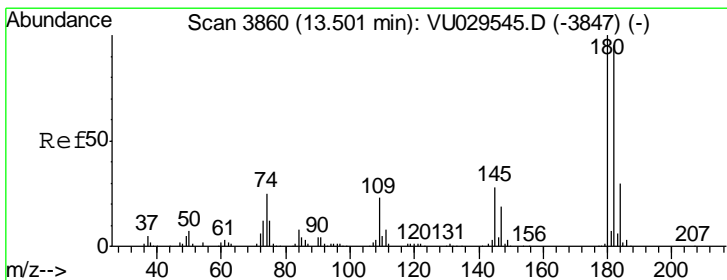
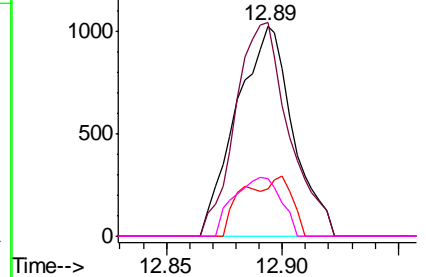
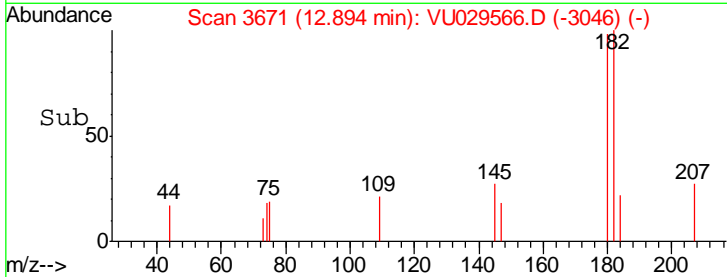
#67
 1,3,5-Trichlorobenzene
 Concen: 0.055 ug/L
 RT: 12.89 min Scan# 3671
 Delta R.T. 0.01 min
 Lab File: VU029566.D
 Acq: 19 Feb 2019 20:01

Instrument :
 MSVOA_U
 ClientSampled :
 ESXF6

Tgt Ion	Resp	Lower	Upper
180	1730		
182	96.4	76.0	114.0
184	12.7	24.1	36.1#
145	23.6	22.6	34.0

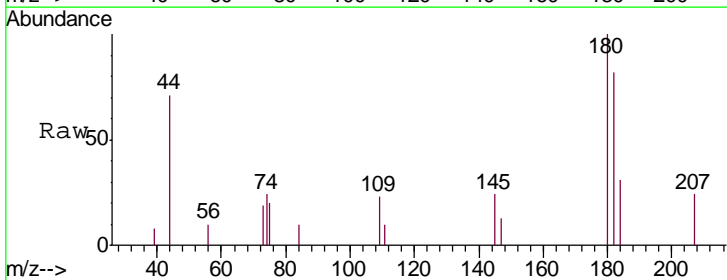


Abundance Ion 180.00 (179.70 to 180.70): V
 Ion 182.00 (181.70 to 182.70): V
 Ion 184.00 (183.70 to 184.70): V
 Ion 145.00 (144.70 to 145.70): V

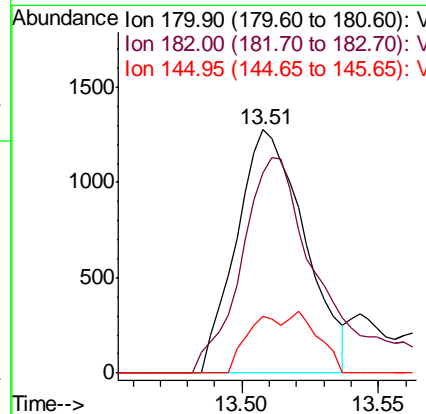
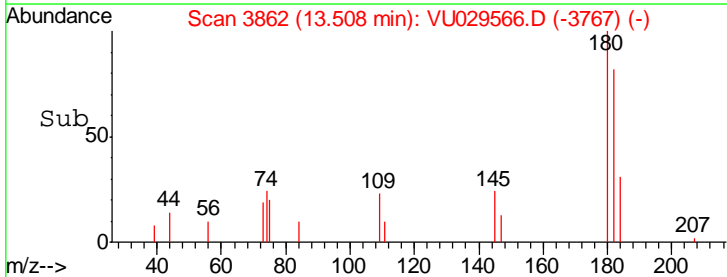


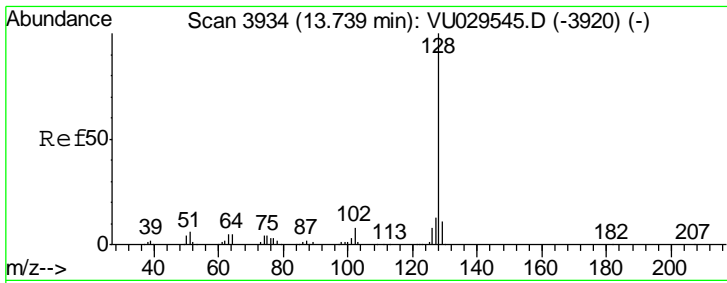
#68
 1,2,4-trichlorobenzene
 Concen: 0.083 ug/L
 RT: 13.51 min Scan# 3862
 Delta R.T. 0.01 min
 Lab File: VU029566.D
 Acq: 19 Feb 2019 20:01

Tgt Ion	Resp	Lower	Upper
180	2210		
182	103.0	77.1	115.7
145	12.3	23.1	34.7#



Abundance Ion 179.90 (179.60 to 180.60): V
 Ion 182.00 (181.70 to 182.70): V
 Ion 144.95 (144.65 to 145.65): V

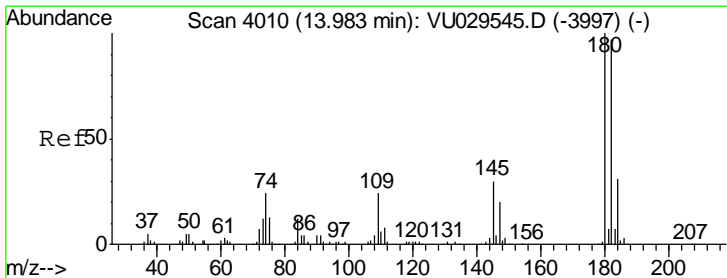
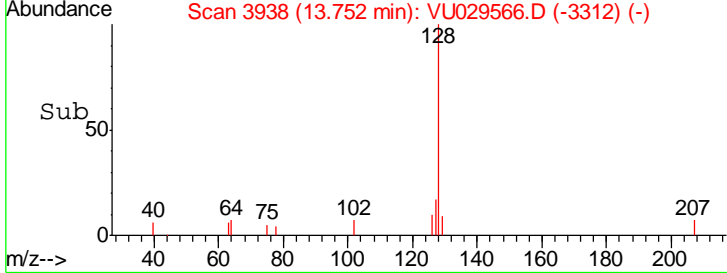
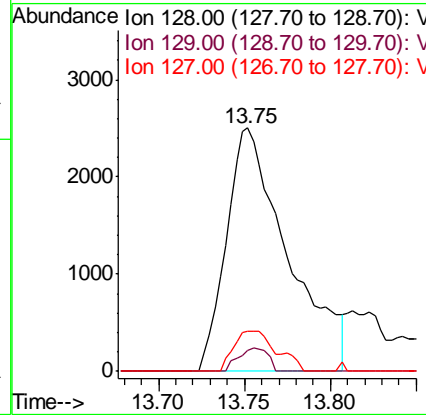
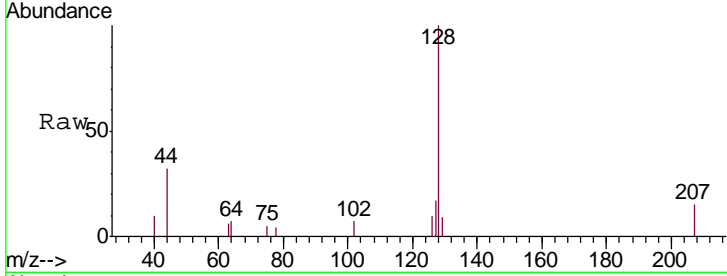




#69
 Naphthalene
 Concen: 0.134 ug/L
 RT: 13.75 min Scan# 3938
 Delta R.T. 0.01 min
 Lab File: VU029566.D
 Acq: 19 Feb 2019 20:01

Instrument :
 MSVOA_U
 ClientSampled :
 ESXF6

Tgt Ion	Resp	Lower	Upper
128	6192		
129	4.6	8.7	13.1#
127	11.6	10.3	15.5



#70
 1,2,3-Trichlorobenzene
 Concen: 0.106 ug/L
 RT: 13.99 min Scan# 4013
 Delta R.T. 0.01 min
 Lab File: VU029566.D
 Acq: 19 Feb 2019 20:01

Tgt Ion	Resp	Lower	Upper
180	2695		
182	104.3	75.9	113.9
145	24.3	23.8	35.6

