

Data Path : Z:\VOASRV\HPCHEM1\MSVOA U\DATA\VU021919\
 Data File : VU029550.D
 Acq On : 19 Feb 2019 13:17
 Operator : JC/SP
 Sample : K1509-02DL 2X
 Misc : 25.0mL/MSVOA U/WATER
 ALS Vial : 7 Sample Multiplier: 1

Instrument :
 MSVOA_U
 ClientSampleID :
 GAGH0DL

Integration Parameters: rteint.p
 Integrator: RTE
 Smoothing : ON
 Sampling : 1
 Start Thrs: 0.1
 Stop Thrs : 0

Filtering: 5
 Min Area: 3 % of largest Peak
 Max Peaks: 100
 Peak Location: TOP

If leading or trailing edge < 100 prefer < Baseline drop else tangent >
 Peak separation: 5

Method : Z:\VOASRV\HPCHEM1\MSVOA_U\METHOD\SOMUTR021219WMA.M
 Title : TRACE VOA SOM01.0

Signal : TIC

peak #	R.T. min	first scan	max scan	last scan	PK TY	peak height	corr. area	corr. % max.	% of total
1	1.286	55	61	67	rBV	17568	17149	2.23%	0.250%
2	1.395	88	95	105	rBV	91146	96262	12.53%	1.403%
3	1.550	139	143	149	rVB4	9940	10529	1.37%	0.154%
4	1.678	176	183	197	rVB	80922	101079	13.15%	1.474%
5	2.273	357	368	379	rBV	170140	260612	33.92%	3.800%
6	2.701	494	501	509	rVB2	8322	13110	1.71%	0.191%
7	4.193	950	965	1000	rBV	99349	285814	37.20%	4.167%
8	4.646	1088	1106	1128	rBV2	110300	270054	35.14%	3.937%
9	5.128	1235	1256	1280	rBV3	271295	630937	82.11%	9.199%
10	5.337	1298	1321	1342	rBV3	224142	624163	81.23%	9.100%
11	5.884	1472	1491	1520	rBV	241198	475229	61.85%	6.929%
12	6.328	1614	1629	1650	rBV	143648	293390	38.18%	4.277%
13	7.228	1897	1909	1929	rBV2	78398	145887	18.99%	2.127%
14	7.562	2000	2013	2047	rBV	308737	561923	73.13%	8.193%
15	7.852	2092	2103	2122	rBV2	47132	84417	10.99%	1.231%
16	8.177	2193	2204	2224	rBV2	26520	51555	6.71%	0.752%
17	8.312	2233	2246	2284	rBV	420623	768414	100.00%	11.203%
18	9.086	2474	2487	2513	rBV	356459	602506	78.41%	8.784%
19	10.430	2893	2905	2920	rBV	129638	209847	27.31%	3.059%
20	10.604	2946	2959	2971	rBV2	46367	78571	10.23%	1.146%
21	11.482	3219	3232	3256	rBV	377859	626635	81.55%	9.136%
22	11.858	3335	3349	3370	rBV	334712	559076	72.76%	8.151%
23	12.479	3531	3542	3553	rVB	20392	33488	4.36%	0.488%
24	14.276	4088	4101	4114	rBV	23235	41561	5.41%	0.606%
25	15.877	4592	4599	4610	rVB3	10336	16741	2.18%	0.244%

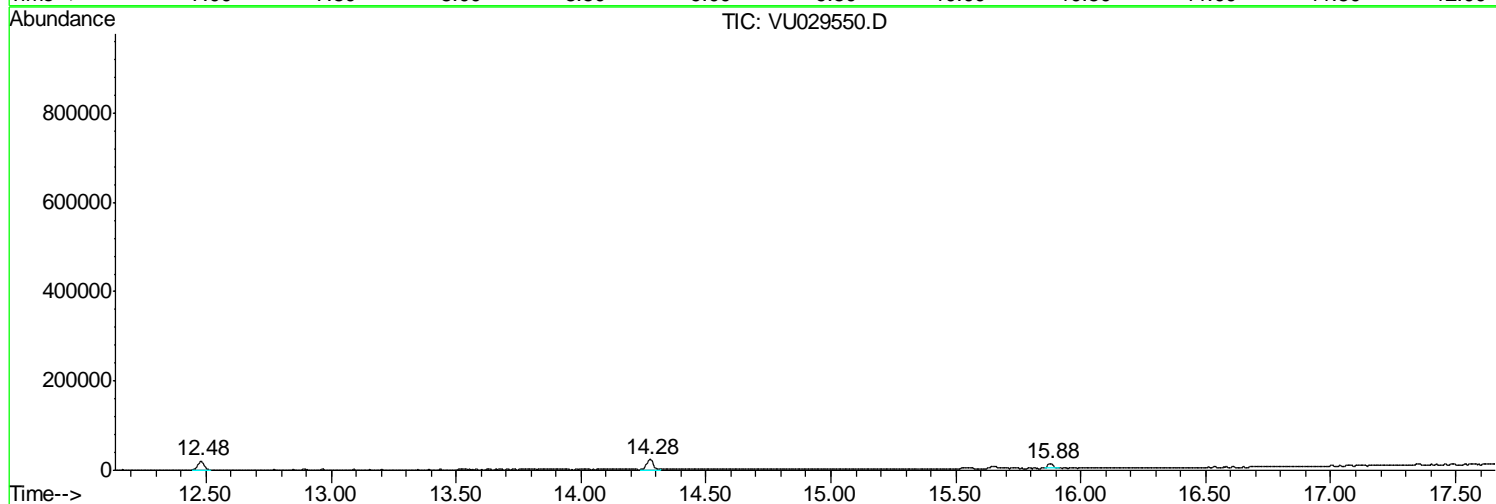
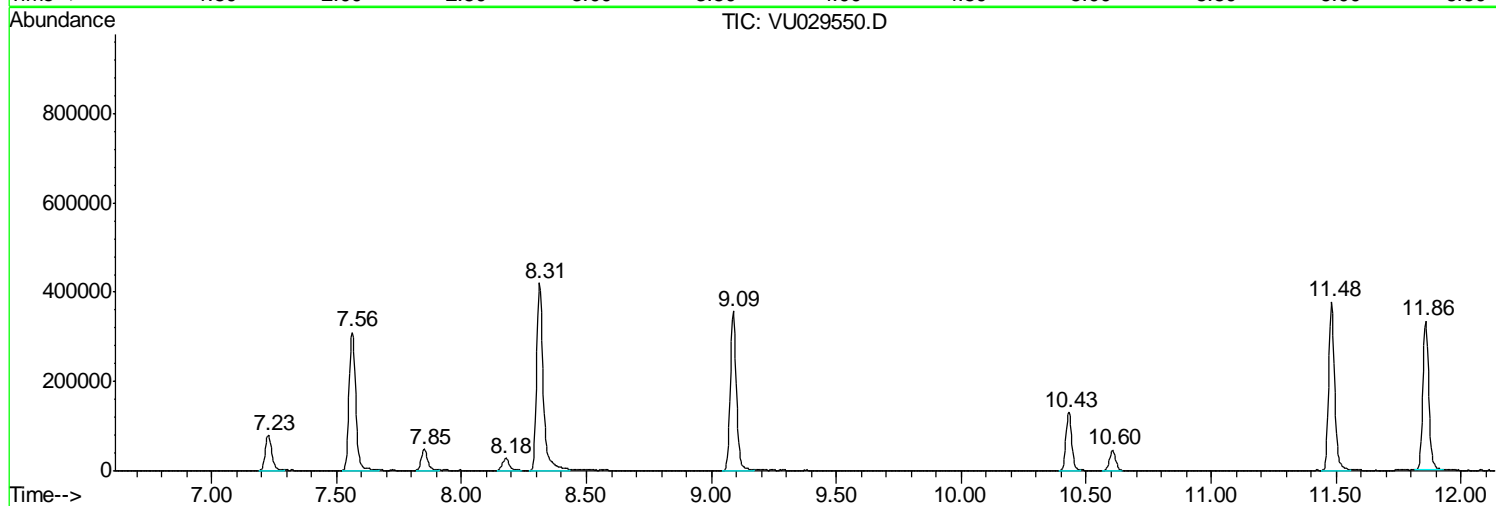
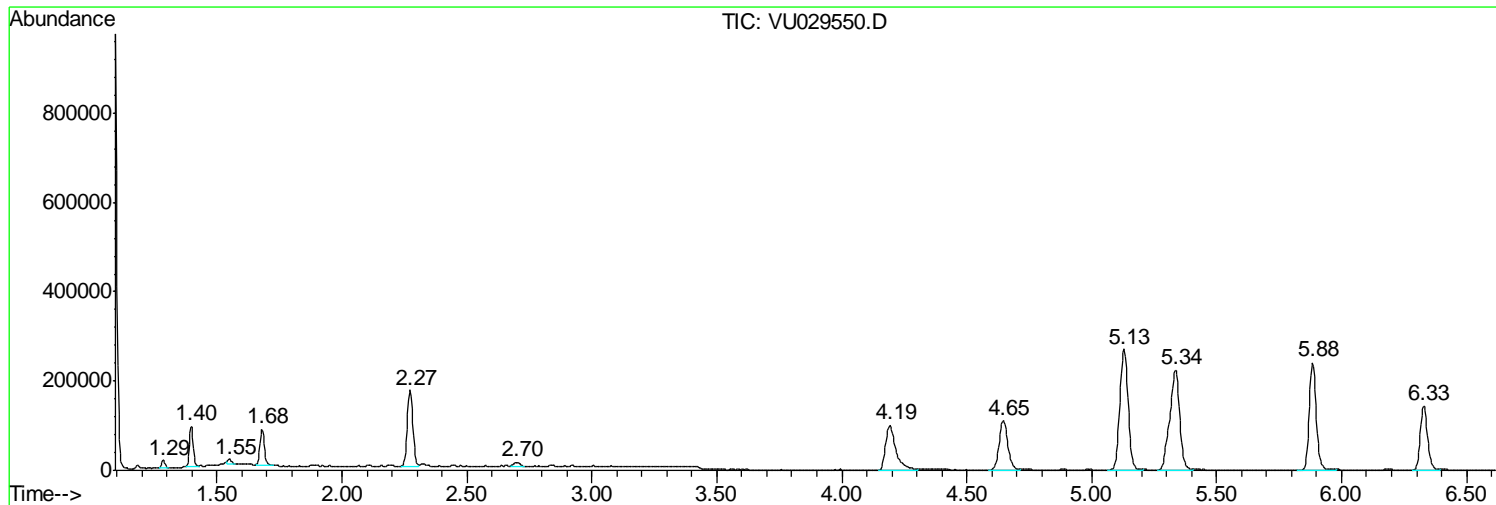
Sum of corrected areas: 6858949

Data Path : Z:\VOASRV\HPCHEM1\MSVOA U\DATA\VU021919\
Data File : VU029550.D
Acq On : 19 Feb 2019 13:17
Operator : JC/SP
Sample : K1509-02DL 2X
Misc : 25.0mL/MSVOA U/WATER
ALS Vial : 7 Sample Multiplier: 1

Instrument :
MSVOA_U
ClientSampleId :
GAGH0DL

Quant Method : Z:\VOASRV\HPCHEM1\MSVOA_U\METHOD\SOMUTR021219WMA.M
Quant Title : TRACE VOA SOM01.0

TIC Library : C:\DATABASE\NIST11.L
TIC Integration Parameters: LSCINT.P



Data Path : Z:\VOASRV\HPCHEM1\MSVOA_U\DATA\VU021919\
Data File : VU029550.D
Acq On : 19 Feb 2019 13:17
Operator : JC/SP
Sample : K1509-02DL 2X
Misc : 25.0mL/MSVOA_U/WATER
ALS Vial : 7 Sample Multiplier: 1

Instrument :
MSVOA_U
ClientSampleId :
GAGH0DL

Quant Method : Z:\VOASRV\HPCHEM1\MSVOA_U\METHOD\SOMUTR021219WMA.M
Quant Title : TRACE VOA SOM01.0

TIC Library : C:\DATABASE\NIST11.L
TIC Integration Parameters: LSCINT.P

No Library Search Compounds Detected

Data Path : Z:\VOASRV\HPCHEM1\MSVOA_U\DATA\VU021919\
Data File : VU029550.D
Acq On : 19 Feb 2019 13:17
Operator : JC/SP
Sample : K1509-02DL 2X
Misc : 25.0mL/MSVOA_U/WATER
ALS Vial : 7 Sample Multiplier: 1

Instrument :
MSVOA_U
ClientSampleId :
GAGH0DL

Quant Method : Z:\VOASRV\HPCHEM1\MSVOA_U\METHOD\SOMUTR021219WMA.M
Quant Title : TRACE VOA SOM01.0

TIC Library : C:\DATABASE\NIST11.L
TIC Integration Parameters: LSCINT.P

TIC Top Hit name	RT	EstConc	Units	Response	--Internal Standard--			
					#	RT	Resp	Conc
