

Data Path : Z:\VOASRV\HPCHEM1\MSVOA U\DATA\VU021920\
 Data File : VU036855.D
 Acq On : 19 Feb 2020 18:31
 Operator : JC/MD
 Sample : L1580-11
 Misc : 25.0mL/MSVOA U/WATER
 ALS Vial : 18 Sample Multiplier: 1

Instrument :
 MSVOA_U
 ClientSampleId :
 DBDK2

Integration Parameters: rteint.p
 Integrator: RTE
 Smoothing : ON
 Sampling : 1
 Start Thrs: 0.1
 Stop Thrs : 0

Filtering: 5
 Min Area: 3 % of largest Peak
 Max Peaks: 100
 Peak Location: TOP

If leading or trailing edge < 100 prefer < Baseline drop else tangent >
 Peak separation: 5

Method : Z:\VOASRV\HPCHEM1\MSVOA_U\METHOD\SOMUTR021220WMA.M
 Title : TRACE VOA SOM01.0

Signal : TIC

peak #	R.T. min	first scan	max scan	last scan	PK TY	peak height	corr. area	corr. % max.	% of total
1	1.610	77	84	95	rBV	70310	75427	14.92%	1.446%
2	1.928	175	183	202	rVB	64779	84233	16.66%	1.615%
3	2.591	377	389	404	rVV	108911	178008	35.20%	3.412%
4	4.684	1023	1040	1072	rBV	73963	199472	39.45%	3.824%
5	5.105	1155	1171	1189	rBV2	92206	201974	39.94%	3.872%
6	5.761	1353	1375	1399	rBV2	201460	502435	99.36%	9.632%
7	6.282	1523	1537	1554	rBV	180797	336962	66.64%	6.460%
8	6.726	1661	1675	1691	rBV	122801	236880	46.84%	4.541%
9	7.594	1933	1945	1962	rBV	62658	109426	21.64%	2.098%
10	7.925	2028	2048	2064	rBV	254117	431394	85.31%	8.270%
11	8.205	2122	2135	2151	rBV2	37409	63687	12.59%	1.221%
12	8.494	2212	2225	2237	rBV2	3817	6912	1.37%	0.133%
13	8.665	2264	2278	2312	rBV	281266	505670	100.00%	9.694%
14	9.439	2507	2519	2545	rBV	244905	409868	81.05%	7.857%
15	10.777	2923	2935	2949	rBV2	84972	134959	26.69%	2.587%
16	10.906	2967	2975	2988	rBV4	6016	9529	1.88%	0.183%
17	11.828	3249	3262	3277	rBV	248186	390154	77.16%	7.479%
18	12.111	3342	3350	3360	rVB	5556	7976	1.58%	0.153%
19	12.208	3368	3380	3397	rVB	223609	355289	70.26%	6.811%
20	12.330	3407	3418	3428	rBV2	5714	9119	1.80%	0.175%
21	14.118	3956	3974	3989	rBV	284394	463619	91.68%	8.888%
22	14.240	4005	4012	4026	rVB	5647	7930	1.57%	0.152%
23	15.266	4319	4331	4345	rVB	71100	113256	22.40%	2.171%
24	15.452	4378	4389	4403	rBV	32707	53671	10.61%	1.029%
25	16.005	4550	4561	4573	rBV2	25514	41210	8.15%	0.790%
26	16.201	4613	4622	4632	rBV2	5145	8154	1.61%	0.156%
27	16.317	4648	4658	4673	rBV5	9326	14849	2.94%	0.285%
28	16.465	4695	4704	4711	rBV2	10854	17848	3.53%	0.342%
29	16.944	4845	4853	4864	rVB4	9562	14540	2.88%	0.279%
30	17.159	4908	4920	4936	rBV2	78923	143689	28.42%	2.755%
31	17.478	5008	5019	5033	rBV	43538	88309	17.46%	1.693%

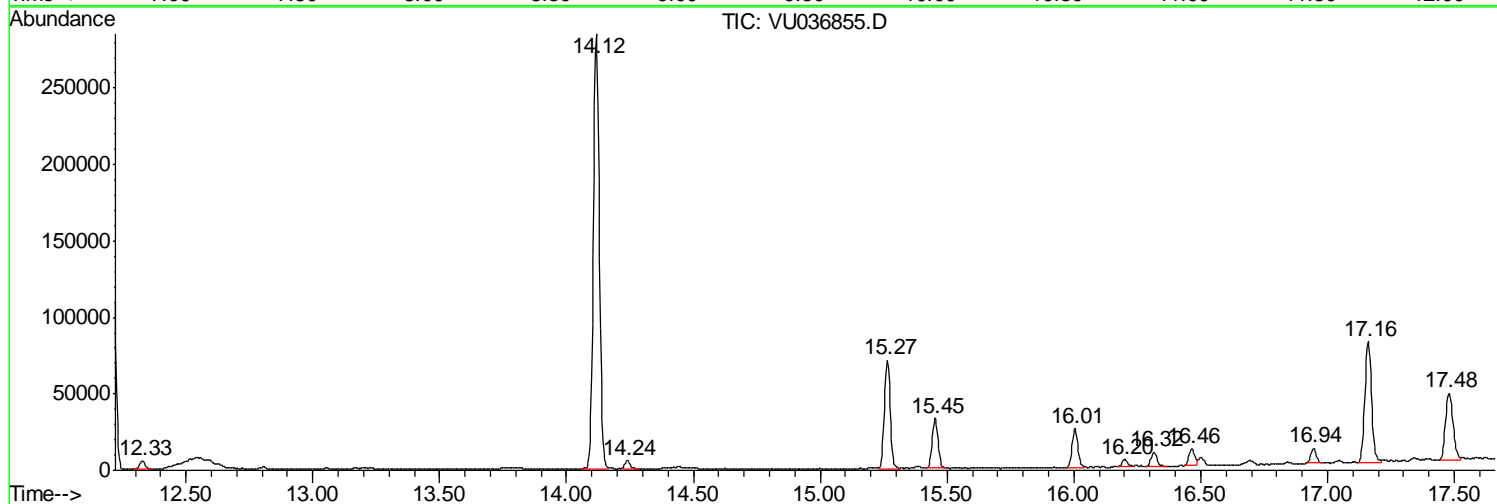
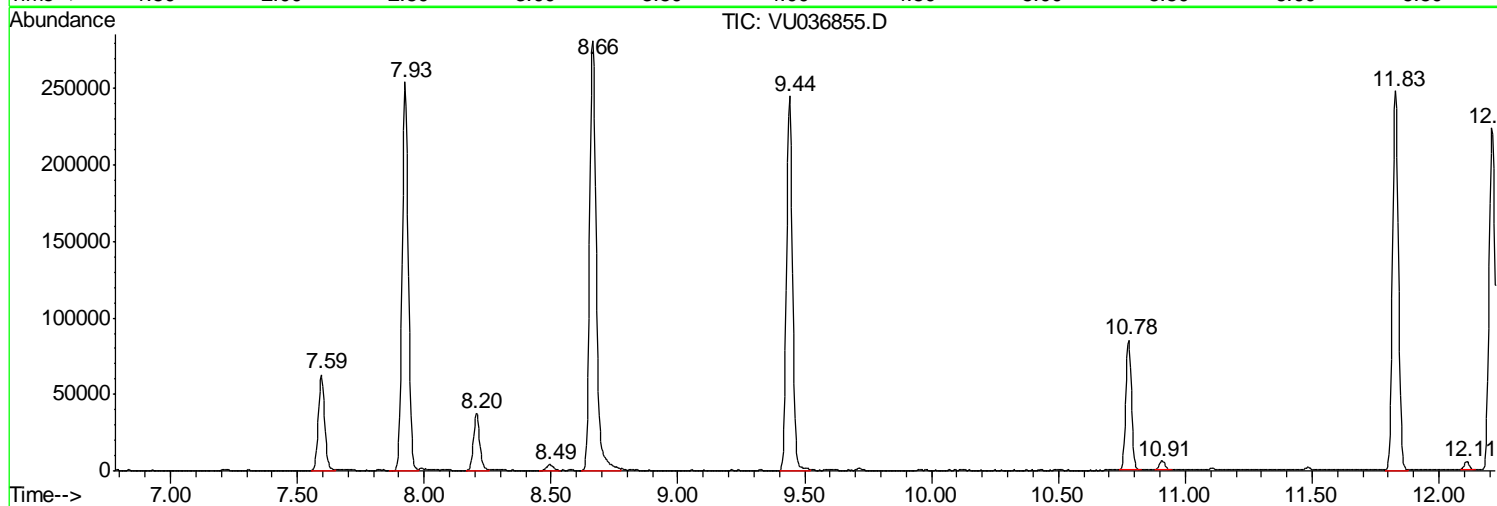
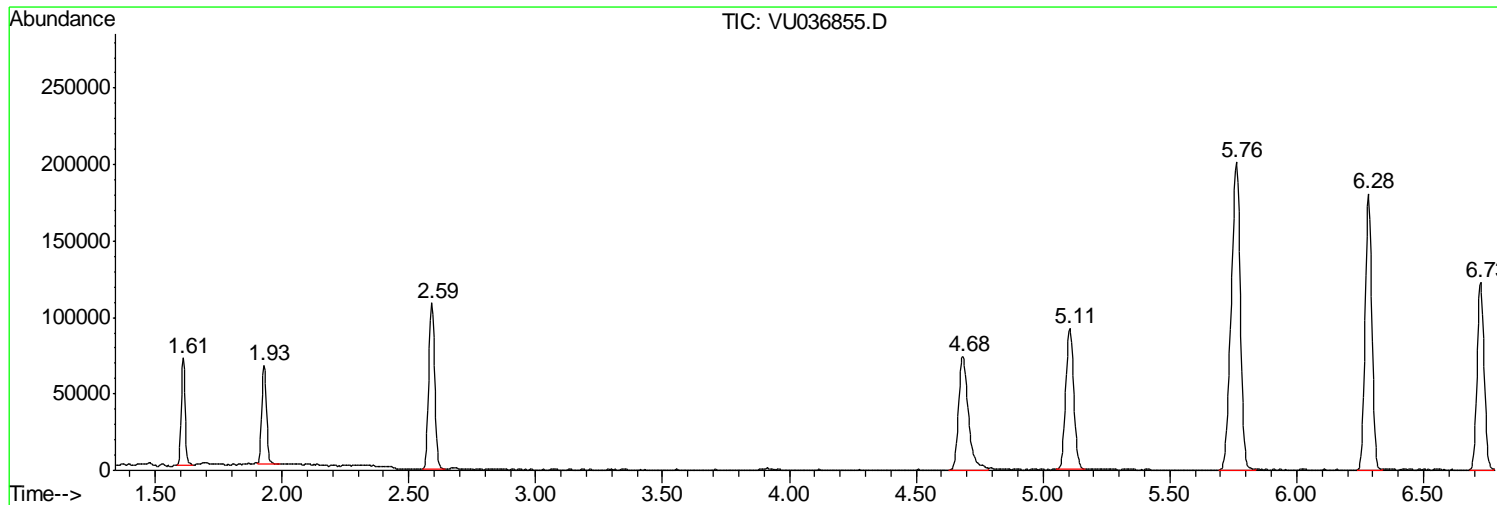
Sum of corrected areas: 5216449

Data Path : Z:\VOASRV\HPCHEM1\MSVOA U\DATA\VU021920\
Data File : VU036855.D
Acq On : 19 Feb 2020 18:31
Operator : JC/MD
Sample : L1580-11
Misc : 25.0mL/MSVOA U/WATER
ALS Vial : 18 Sample Multiplier: 1

Instrument :
MSVOA_U
ClientSampleId :
DBDK2

Quant Method : Z:\VOASRV\HPCHEM1\MSVOA_U\METHOD\SOMUTR021220WMA.M
Quant Title : TRACE VOA SOM01.0

TIC Library : C:\DATABASE\NIST11.L
TIC Integration Parameters: LSCINT.P



Data Path : Z:\VOASRV\HPCHEM1\MSVOA U\DATA\VU021920\
 Data File : VU036855.D
 Acq On : 19 Feb 2020 18:31
 Operator : JC/MD
 Sample : L1580-11
 Misc : 25.0mL/MSVOA U/WATER
 ALS Vial : 18 Sample Multiplier: 1

Instrument :
 MSVOA_U
 ClientSampled :
 DBDK2

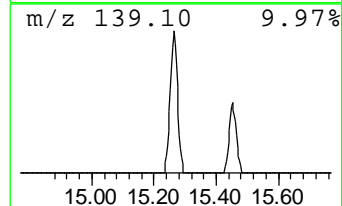
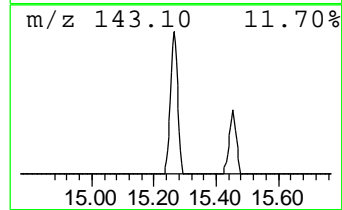
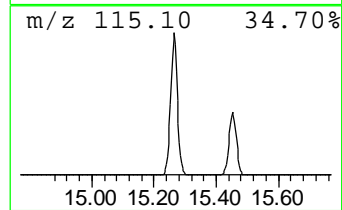
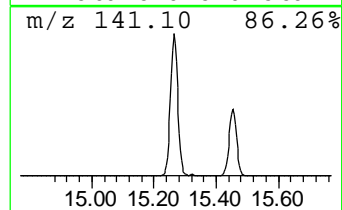
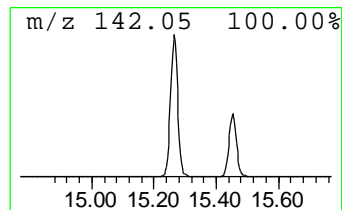
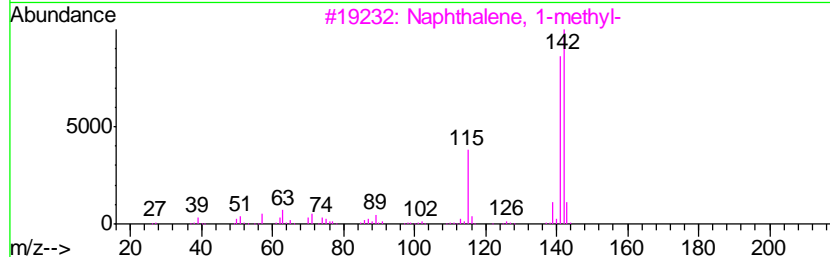
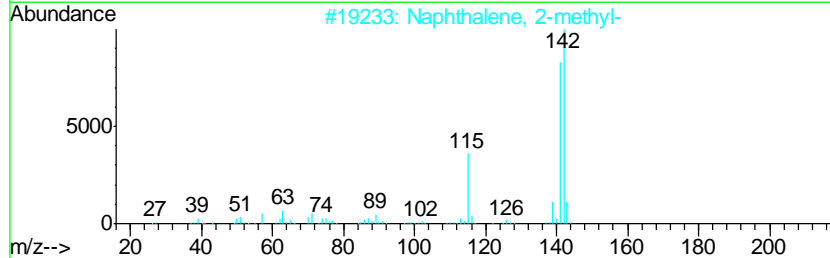
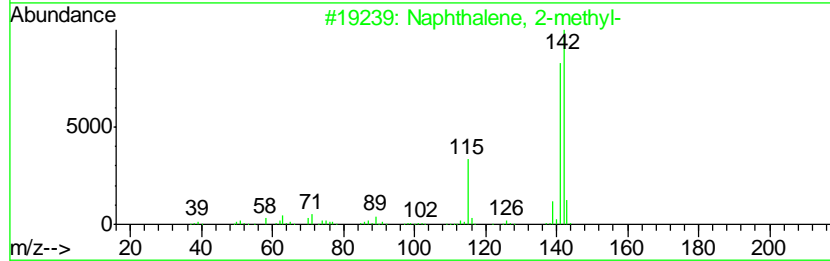
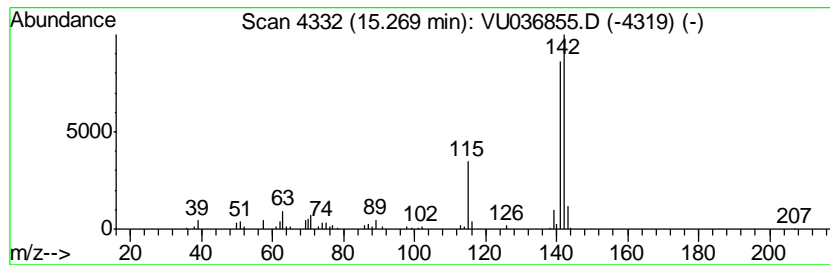
Quant Method : Z:\VOASRV\HPCHEM1\MSVOA_U\METHOD\SOMUTR021220WMA.M
 Quant Title : TRACE VOA SOM01.0

TIC Library : C:\DATABASE\NIST11.L
 TIC Integration Parameters: LSCINT.P

 Peak Number 3 Naphthalene, 1-methyl- Concentration Rank 4

R.T.	EstConc	Area	Relative to ISTD	R.T.
15.27	1.45 ug/L	113256	1,4-Dichlorobenzene-d4	11.83

Hit#	of	Tentative ID	MW	MolForm	CAS#	Qual
1	5	Naphthalene, 2-methyl-	142	C11H10	000091-57-6	96
2		Naphthalene, 2-methyl-	142	C11H10	000091-57-6	96
3		Naphthalene, 1-methyl-	142	C11H10	000090-12-0	96
4		1,4-Methanonaphthalene, 1,4-dihy...	142	C11H10	004453-90-1	94
5		Benzocycloheptatriene	142	C11H10	000264-09-5	94



Data Path : Z:\VOASRV\HPCHEM1\MSVOA_U\DATA\VU021920\
Data File : VU036855.D
Acq On : 19 Feb 2020 18:31
Operator : JC/MD
Sample : L1580-11
Misc : 25.0mL/MSVOA_U/WATER
ALS Vial : 18 Sample Multiplier: 1

Instrument :
MSVOA_U
ClientSampleId :
DBDK2

Quant Method : Z:\VOASRV\HPCHEM1\MSVOA_U\METHOD\SOMUTR021220WMA.M
Quant Title : TRACE VOA SOM01.0

TIC Library : C:\DATABASE\NIST11.L
TIC Integration Parameters: LSCINT.P

TIC Top Hit name	RT	EstConc	Units	Response	--Internal Standard--			
					#	RT	Resp	Conc
Naphthalene, 1-me...	15.27	1.5	ug/L	113256	3	11.83	390154	5.0