

Data Path : Z:\voasrv\HPCHEM1\MSVOA_U\Data\VU022021\
 Data File : VU042375.D
 Acq On : 19 Feb 2021 20:31
 Operator : SY/MD
 Sample : M1404-01
 Misc : 5.0mL/MSVOA_U/WATER
 ALS Vial : 18 Sample Multiplier: 1

Instrument :
 MSVOA_U
 ClientSampleId :
 NWB-1579-1582

Quant Time: Feb 20 00:31:22 2021
 Quant Method : Z:\VOASRV\HPCHEM1\MSVOA_U\METHOD\82U021721W.M
 Quant Title : SW846 8260
 QLast Update : Fri Feb 19 02:55:52 2021
 Response via : Initial Calibration

Compound	R.T.	QIon	Response	Conc	Units	Dev(Min)
Internal Standards						
1) Pentafluorobenzene	5.382	168	147392	50.00	ug/l	0.00
34) 1,4-Difluorobenzene	6.256	114	215797	50.00	ug/l	0.00
63) Chlorobenzene-d5	9.423	117	191042	50.00	ug/l	0.00
72) 1,4-Dichlorobenzene-d4	11.819	152	89440	50.00	ug/l	0.00
System Monitoring Compounds						
33) 1,2-Dichloroethane-d4	5.710	65	104713	46.85	ug/l	0.00
Spiked Amount	50.000		Recovery	=	93.70%	
35) Dibromofluoromethane	5.298	113	72151	47.37	ug/l	0.00
Spiked Amount	50.000		Recovery	=	94.74%	
50) Toluene-d8	7.906	98	264193	48.43	ug/l	0.00
Spiked Amount	50.000		Recovery	=	96.86%	
62) 4-Bromofluorobenzene	10.639	95	92100	42.84	ug/l	0.00
Spiked Amount	50.000		Recovery	=	85.68%	
Target Compounds						
						Qvalue
5) Bromomethane	1.874	94	286	0.27	ug/l	100
6) Chloroethane	1.922	64	234	0.23	ug/l #	42
11) Tert butyl alcohol	3.237	59	328	0.69	ug/l #	94
13) Acrolein	2.494	56	1596	13.36	ug/l #	56
14) Allyl chloride	2.835	41	3073	1.02	ug/l #	74
16) Acetone	2.642	43	671325	484.19	ug/l	100
17) Carbon Disulfide	2.800	76	2202	0.54	ug/l #	74
18) Methyl Acetate	2.960	43	13038	5.18	ug/l #	91
22) Diisopropyl ether	4.073	45	3069	0.54	ug/l #	1
23) Vinyl Acetate	4.067	43	48163	8.87	ug/l #	76
25) 2-Butanone	4.719	43	62573	33.94	ug/l	99
29) Tetrahydrofuran	5.076	42	2418	2.11	ug/l #	52
31) Cyclohexane	5.382	56	3667	1.25	ug/l #	8
36) 1,1-Dichloropropene	5.382	75	11438	5.36	ug/l #	50
37) Ethyl Acetate	4.812	43	13334	4.02	ug/l	96
38) Carbon Tetrachloride	5.385	117	14498	6.36	ug/l #	16
41) Methacrylonitrile	5.034	41	1127	0.66	ug/l #	26
51) 4-Methyl-2-Pentanone	7.800	43	32254	9.78	ug/l	98
52) Toluene	7.976	92	12094	3.27	ug/l	97
56) Ethyl methacrylate	8.340	69	1698	0.64	ug/l #	74
59) 2-Hexanone	8.693	43	2508	0.95	ug/l	99
67) Ethyl Benzene	9.578	91	3000	0.44	ug/l	90
68) m/p-Xylenes	9.700	106	4479	1.76	ug/l	95
69) o-Xylene	10.108	106	2782	1.12	ug/l	92
76) 1,2,3-Trichloropropane	10.639	75	51619	23.34	ug/l #	37
78) n-propylbenzene	10.912	91	2284	0.33	ug/l	97
79) 2-Chlorotoluene	10.999	91	883	0.21	ug/l #	49
80) 1,3,5-Trimethylbenzene	11.098	105	2289	0.45	ug/l	98
81) trans-1,4-Dichloro-2-b...	10.639	75	51619	63.46	ug/l #	7
82) 4-Chlorotoluene	11.102	91	1169	0.24	ug/l	76
84) 1,2,4-Trimethylbenzene	11.475	105	7906	1.54	ug/l	90
85) sec-Butylbenzene	11.648	105	1677	0.29	ug/l	96
86) p-Isopropyltoluene	11.803	119	2264	0.42	ug/l	96
87) 1,3-Dichlorobenzene	11.758	146	623	0.23	ug/l #	82
88) 1,4-Dichlorobenzene	11.844	146	615	0.22	ug/l #	74
89) n-Butylbenzene	12.214	91	3621	0.76	ug/l #	67

Data Path : Z:\voasrv\HPCHEM1\MSVOA_U\Data\VU022021\
 Data File : VU042375.D
 Acq On : 19 Feb 2021 20:31
 Operator : SY/MD
 Sample : M1404-01
 Misc : 5.0mL/MSVOA_U/WATER
 ALS Vial : 18 Sample Multiplier: 1

Instrument :
 MSVOA_U
 ClientSampleId :
 NWB-1579-1582

Quant Time: Feb 20 00:31:22 2021
 Quant Method : Z:\VOASRV\HPCHEM1\MSVOA_U\METHOD\82U021721W.M
 Quant Title : SW846 8260
 QLast Update : Fri Feb 19 02:55:52 2021
 Response via : Initial Calibration

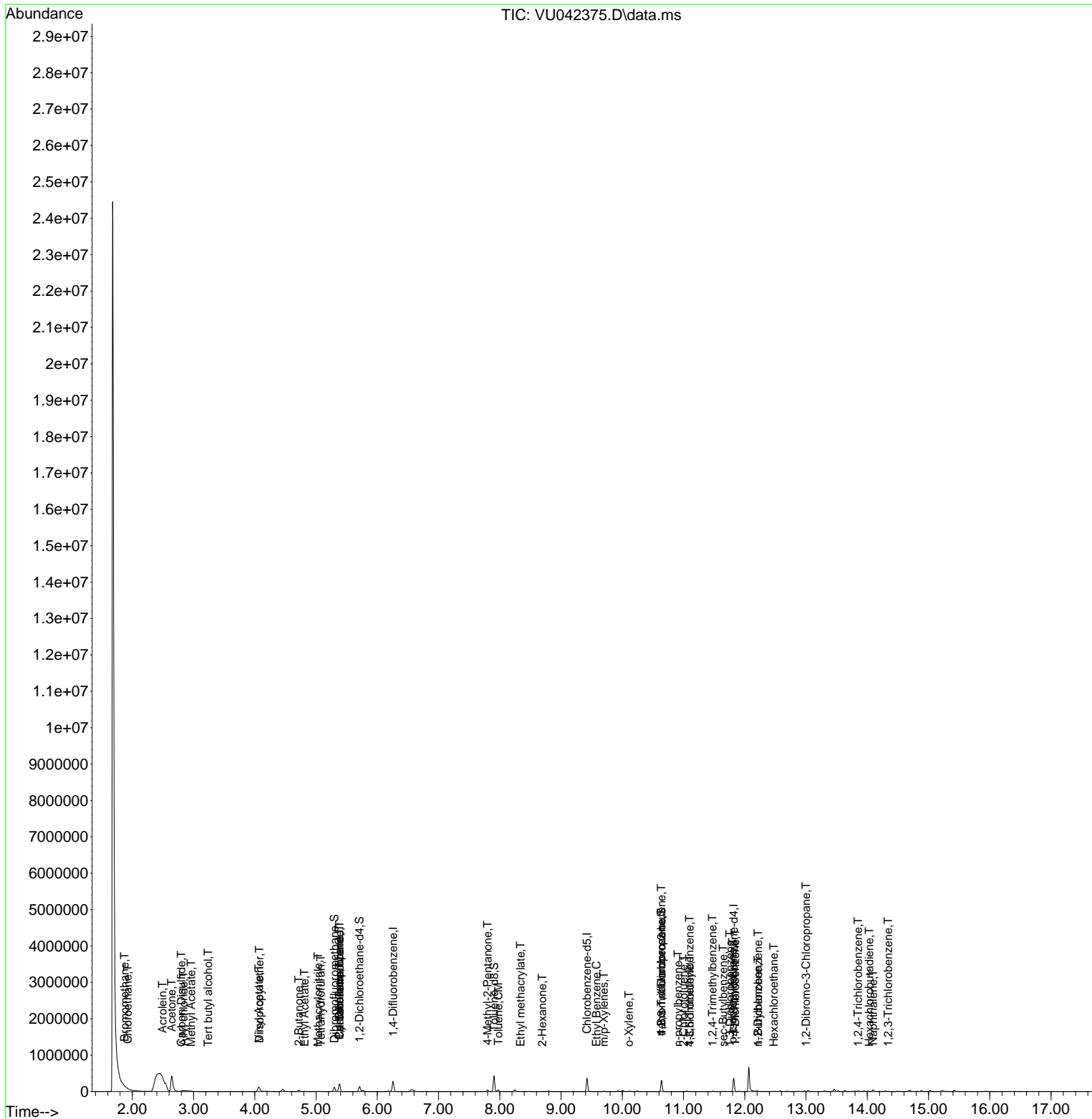
Compound	R.T.	QIon	Response	Conc	Units	Dev(Min)
90) Hexachloroethane	12.475	117	340	0.36	ug/l #	6
91) 1,2-Dichlorobenzene	12.217	146	596	0.21	ug/l	83
92) 1,2-Dibromo-3-Chloropr...	12.999	75	133	0.21	ug/l #	1
93) 1,2,4-Trichlorobenzene	13.848	180	1537	2.44	ug/l #	77
94) Hexachlorobutadiene	14.031	225	397	0.41	ug/l #	75
95) Naphthalene	14.095	128	39254	8.47	ug/l	98
96) 1,2,3-Trichlorobenzene	14.339	180	1840	2.60	ug/l #	72

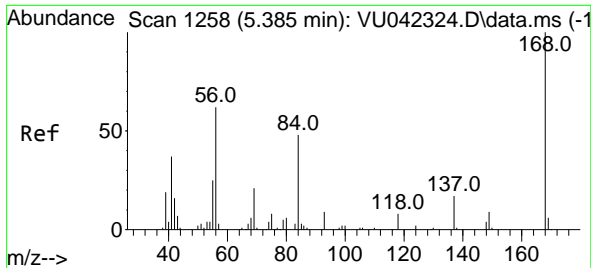
(#) = qualifier out of range (m) = manual integration (+) = signals summed

Data Path : Z:\voasrv\HPCHEM1\MSVOA_U\Data\VU022021\
 Data File : VU042375.D
 Acq On : 19 Feb 2021 20:31
 Operator : SY/MD
 Sample : M1404-01
 Misc : 5.0mL/MSVOA_U/WATER
 ALS Vial : 18 Sample Multiplier: 1

Instrument :
 MSVOA_U
 Client Sampled :
 NWB-1579-1582

Quant Time: Feb 20 00:31:22 2021
 Quant Method : Z:\VOASRV\HPCHEM1\MSVOA_U\METHOD\82U021721W.M
 Quant Title : SW846 8260
 QLast Update : Fri Feb 19 02:55:52 2021
 Response via : Initial Calibration

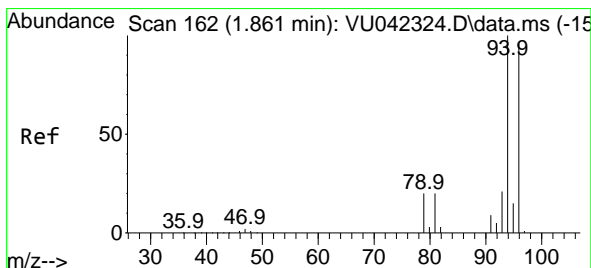
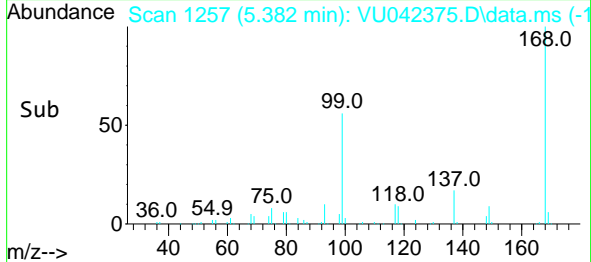
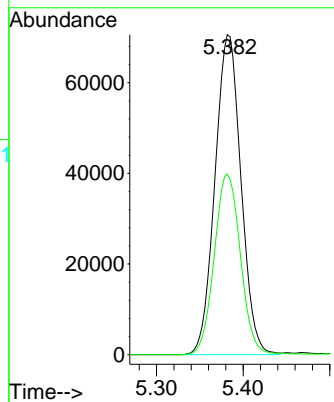
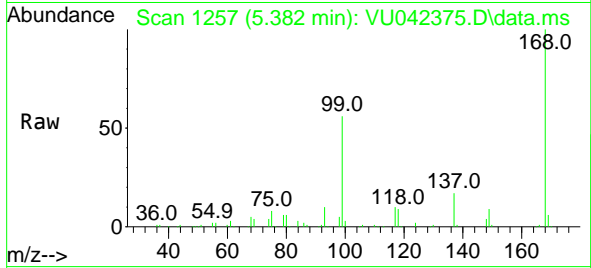




#1
 Pentafluorobenzene
 Concen: 50.00 ug/l
 RT: 5.382 min Scan# 1257
 Delta R.T. -0.003 min
 Lab File: VU042375.D
 Acq: 19 Feb 2021 20:31

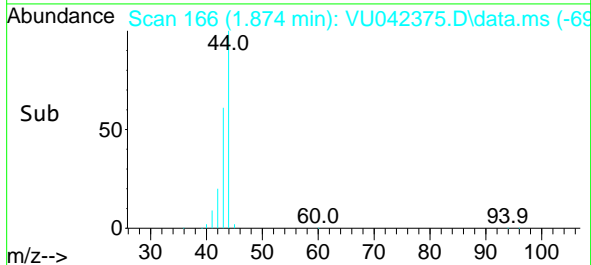
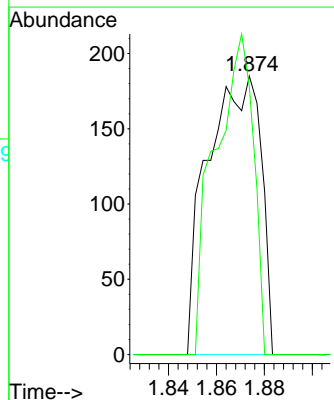
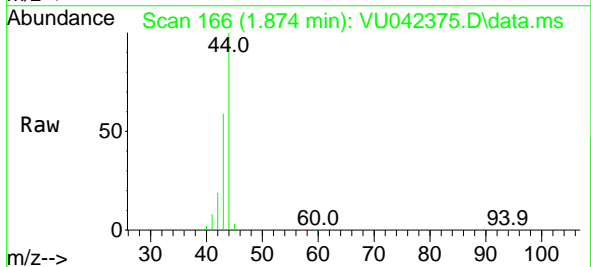
Instrument :
 MSVOA_U
 ClientSampleId :
 NWB-1579-1582

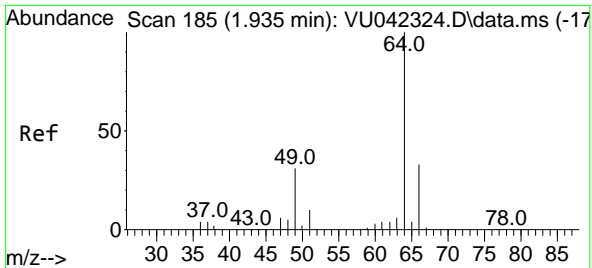
Tgt Ion:168 Resp: 147392
 Ion Ratio Lower Upper
 168 100
 99 56.4 45.0 67.4



#5
 Bromomethane
 Concen: 0.27 ug/l
 RT: 1.874 min Scan# 166
 Delta R.T. 0.013 min
 Lab File: VU042375.D
 Acq: 19 Feb 2021 20:31

Tgt Ion: 94 Resp: 286
 Ion Ratio Lower Upper
 94 100
 96 96.2 76.6 115.0

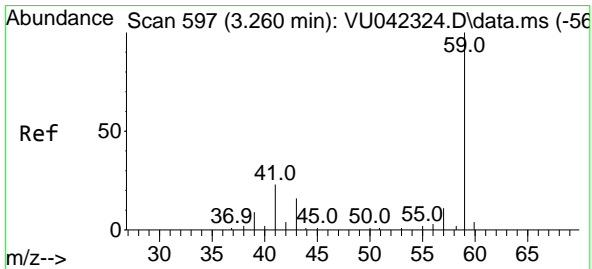
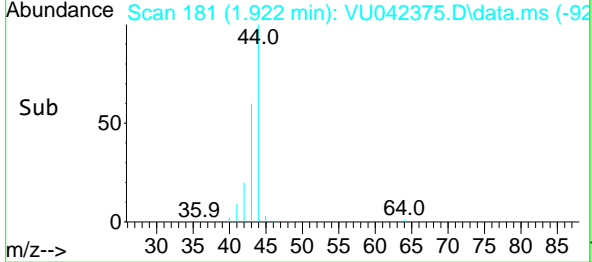
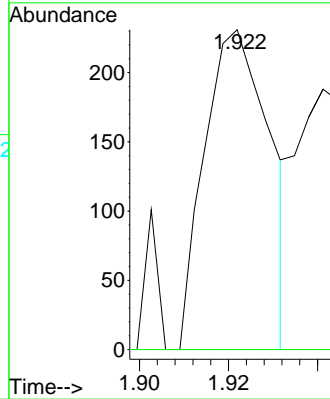
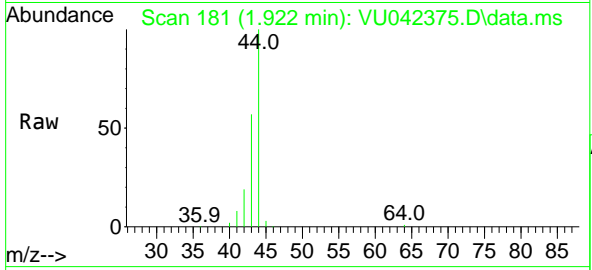




#6
 Chloroethane
 Concen: 0.23 ug/l
 RT: 1.922 min Scan# 181
 Delta R.T. -0.013 min
 Lab File: VU042375.D
 Acq: 19 Feb 2021 20:31

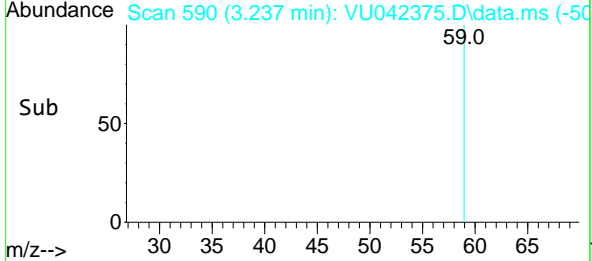
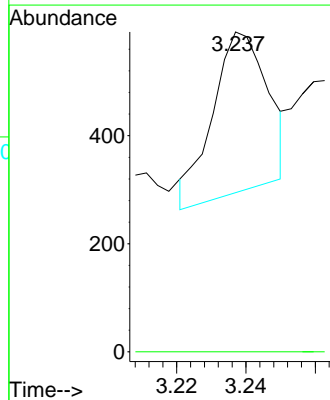
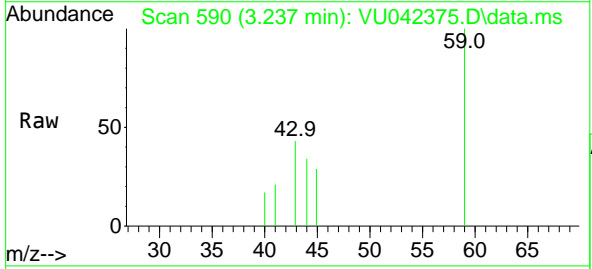
Instrument :
 MSVOA_U
ClientSampled :
 NWB-1579-1582

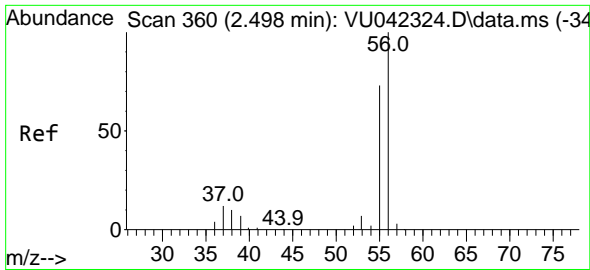
Tgt Ion: 64 Resp: 234
 Ion Ratio Lower Upper
 64 100
 66 0.0 26.4 39.6#



#11
 Tert butyl alcohol
 Concen: 0.69 ug/l
 RT: 3.237 min Scan# 590
 Delta R.T. -0.023 min
 Lab File: VU042375.D
 Acq: 19 Feb 2021 20:31

Tgt Ion: 59 Resp: 328
 Ion Ratio Lower Upper
 59 100
 57 0.0 1.6 2.4#

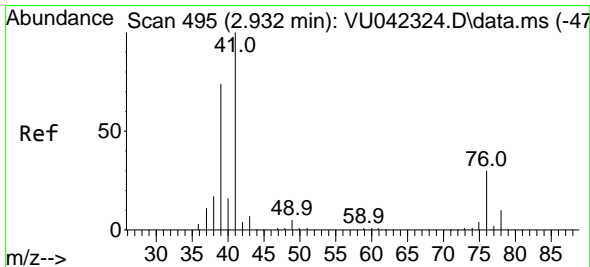
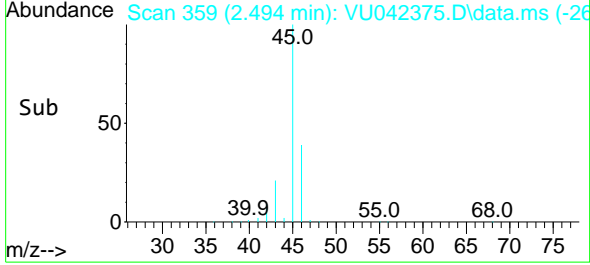
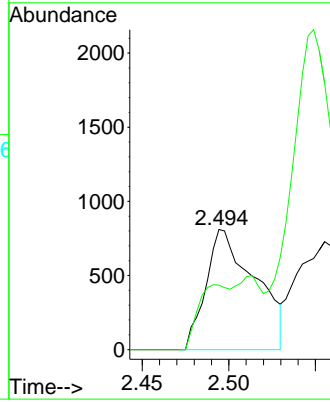
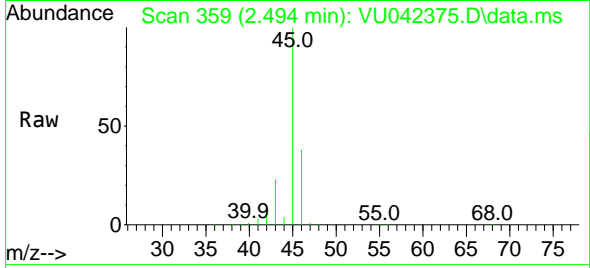




#13
 Acrolein
 Concen: 13.36 ug/l
 RT: 2.494 min Scan# 359
 Delta R.T. -0.004 min
 Lab File: VU042375.D
 Acq: 19 Feb 2021 20:31

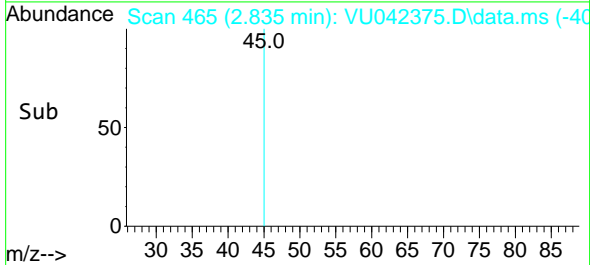
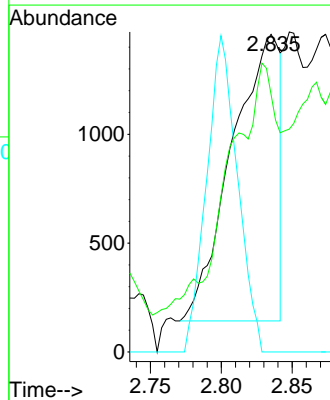
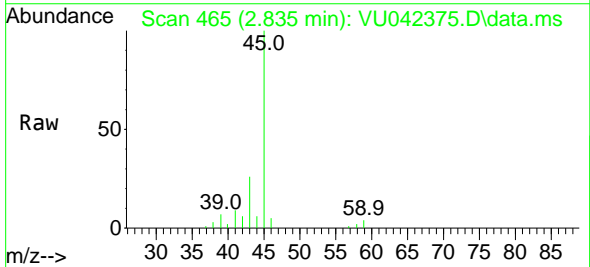
Instrument :
 MSVOA_U
 ClientSampleId :
 NWB-1579-1582

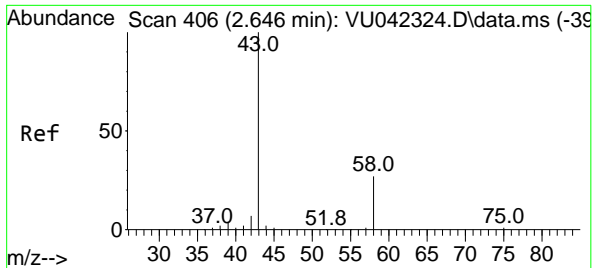
Tgt Ion: 56 Resp: 1596
 Ion Ratio Lower Upper
 56 100
 55 34.7 57.3 85.9#



#14
 Allyl chloride
 Concen: 1.02 ug/l
 RT: 2.835 min Scan# 465
 Delta R.T. -0.097 min
 Lab File: VU042375.D
 Acq: 19 Feb 2021 20:31

Tgt Ion: 41 Resp: 3073
 Ion Ratio Lower Upper
 41 100
 39 81.2 54.9 82.3
 76 0.0 22.5 33.7#

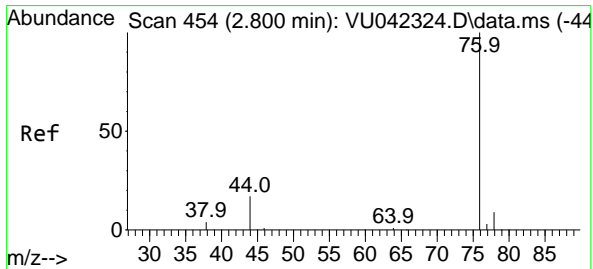
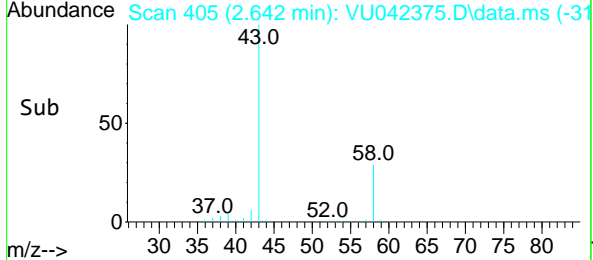
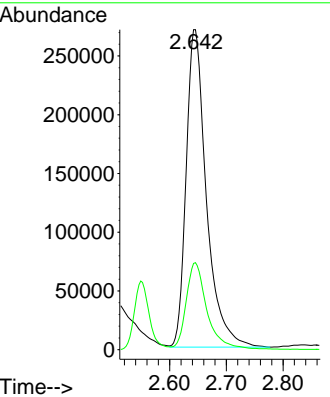
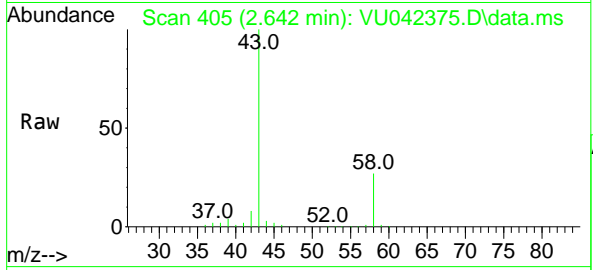




#16
 Acetone
 Concen: 484.19 ug/l
 RT: 2.642 min Scan# 405
 Delta R.T. -0.003 min
 Lab File: VU042375.D
 Acq: 19 Feb 2021 20:31

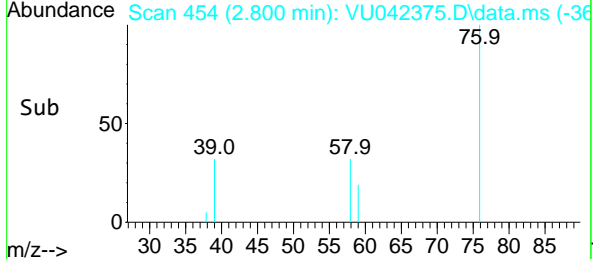
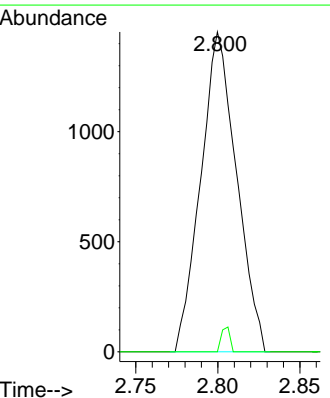
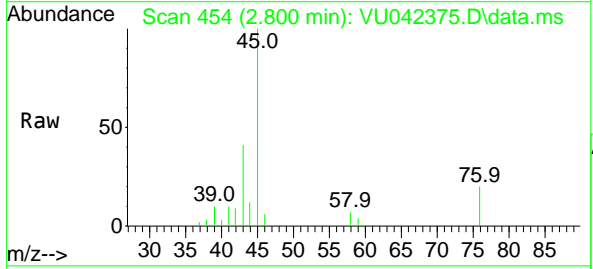
Instrument :
 MSVOA_U
ClientSampled :
 NWB-1579-1582

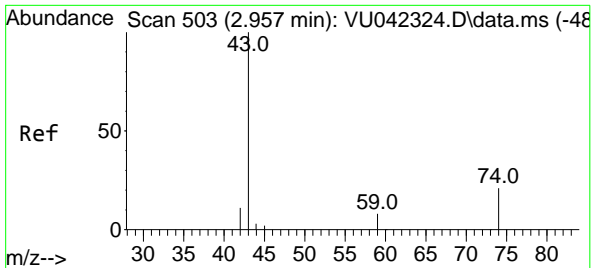
Tgt Ion: 43 Resp: 671325
 Ion Ratio Lower Upper
 43 100
 58 26.9 21.5 32.3



#17
 Carbon Disulfide
 Concen: 0.54 ug/l
 RT: 2.800 min Scan# 454
 Delta R.T. -0.000 min
 Lab File: VU042375.D
 Acq: 19 Feb 2021 20:31

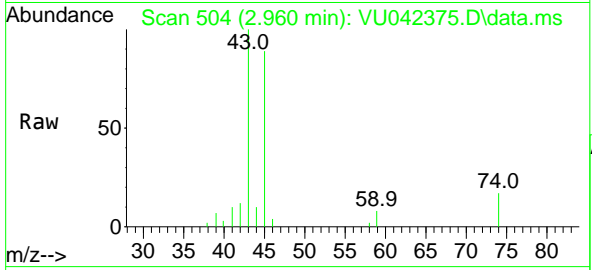
Tgt Ion: 76 Resp: 2202
 Ion Ratio Lower Upper
 76 100
 78 0.0 7.5 11.3#



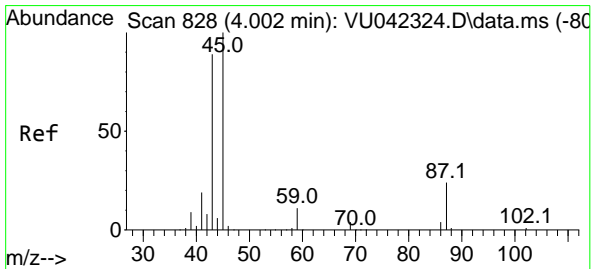
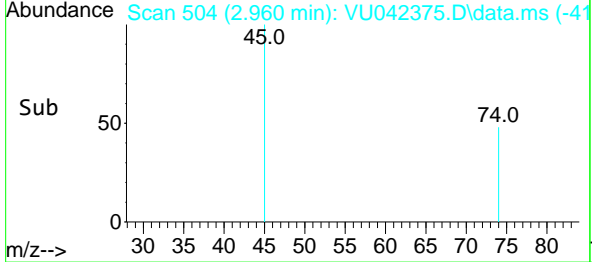
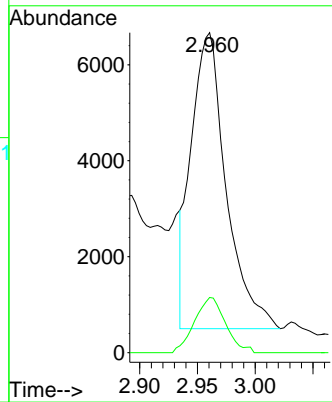


#18
 Methyl Acetate
 Concen: 5.18 ug/l
 RT: 2.960 min Scan# 504
 Delta R.T. 0.003 min
 Lab File: VU042375.D
 Acq: 19 Feb 2021 20:31

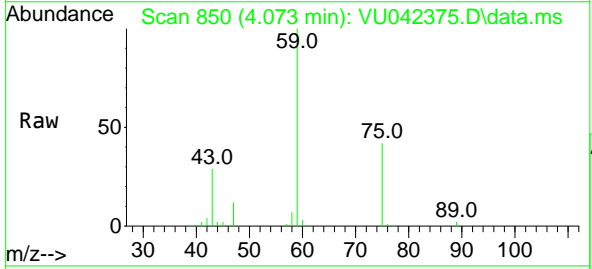
Instrument :
 MSVOA_U
 ClientSampled :
 NWB-1579-1582



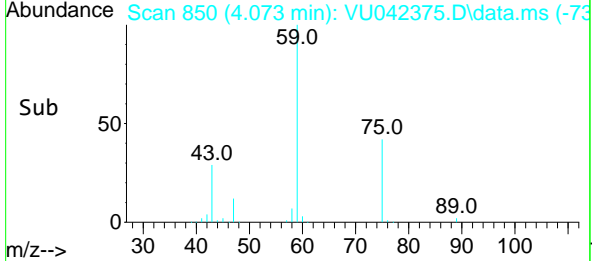
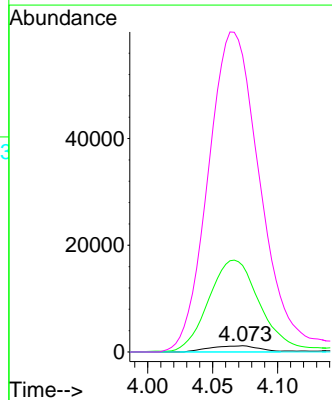
Tgt Ion: 43 Resp: 13038
 Ion Ratio Lower Upper
 43 100
 74 16.5 16.6 25.0#

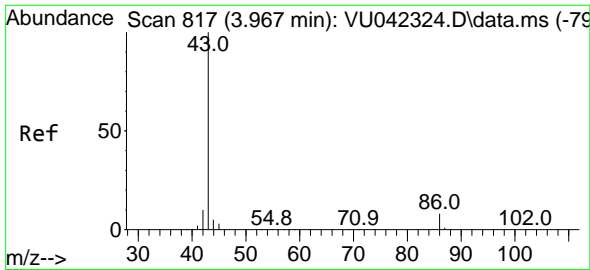


#22
 Diisopropyl ether
 Concen: 0.54 ug/l
 RT: 4.073 min Scan# 850
 Delta R.T. 0.071 min
 Lab File: VU042375.D
 Acq: 19 Feb 2021 20:31



Tgt Ion: 45 Resp: 3069
 Ion Ratio Lower Upper
 45 100
 43 1326.2 73.0 109.6#
 87 0.0 19.5 29.3#
 59 4553.1 8.6 12.8#

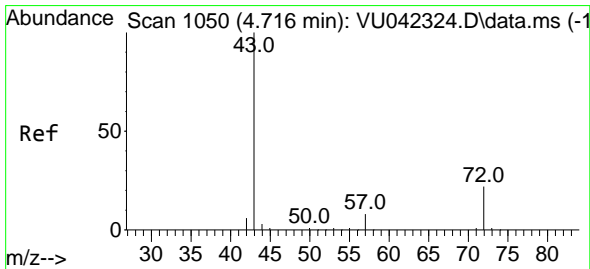
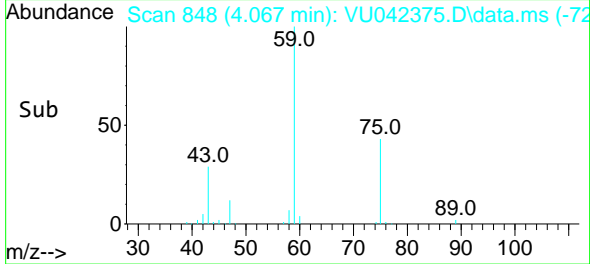
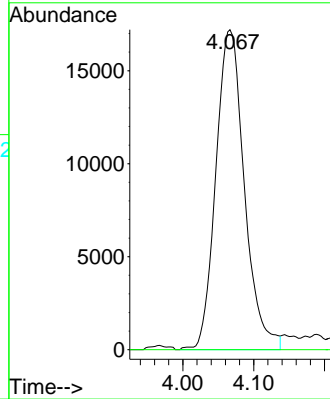
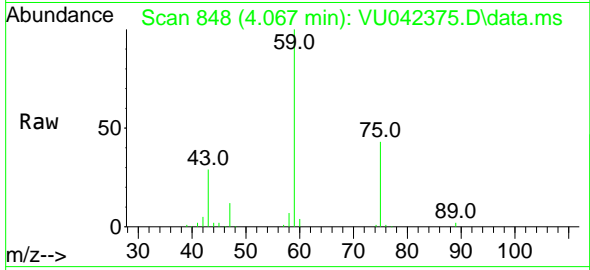




#23
 Vinyl Acetate
 Concen: 8.87 ug/l
 RT: 4.067 min Scan# 848
 Delta R.T. 0.099 min
 Lab File: VU042375.D
 Acq: 19 Feb 2021 20:31

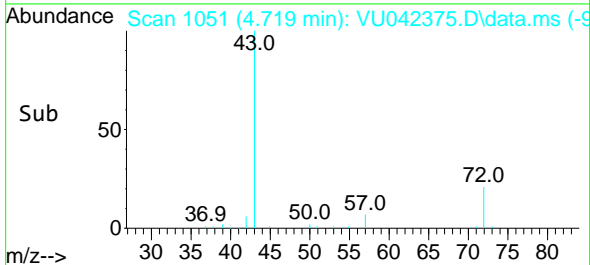
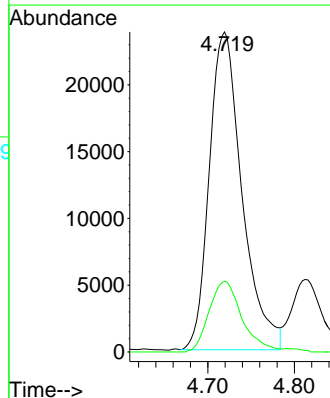
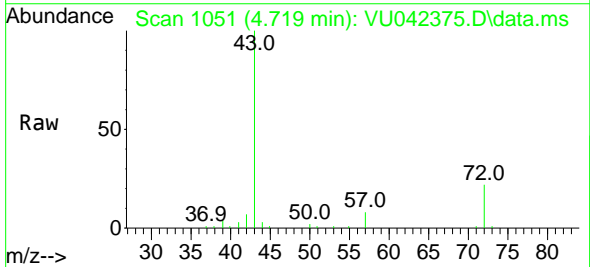
Instrument :
 MSVOA_U
 ClientSampled :
 NWB-1579-1582

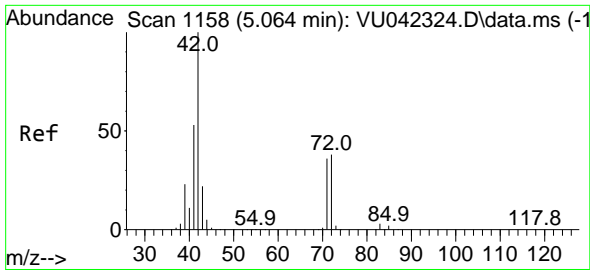
Tgt Ion: 43 Resp: 48163
 Ion Ratio Lower Upper
 43 100
 86 0.0 6.7 10.1#



#25
 2-Butanone
 Concen: 33.94 ug/l
 RT: 4.719 min Scan# 1051
 Delta R.T. 0.003 min
 Lab File: VU042375.D
 Acq: 19 Feb 2021 20:31

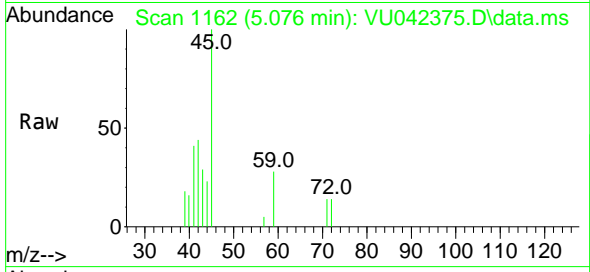
Tgt Ion: 43 Resp: 62573
 Ion Ratio Lower Upper
 43 100
 72 22.2 17.4 26.0



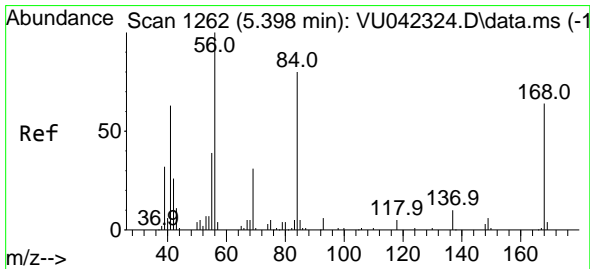
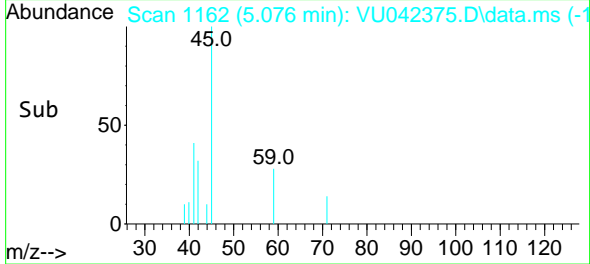
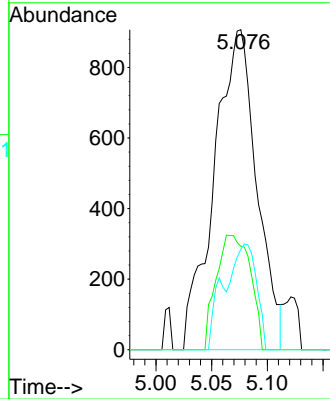


#29
 Tetrahydrofuran
 Concen: 2.11 ug/l
 RT: 5.076 min Scan# 1162
 Delta R.T. 0.013 min
 Lab File: VU042375.D
 Acq: 19 Feb 2021 20:31

Instrument :
 MSVOA_U
 ClientSampleId :
 NWB-1579-1582

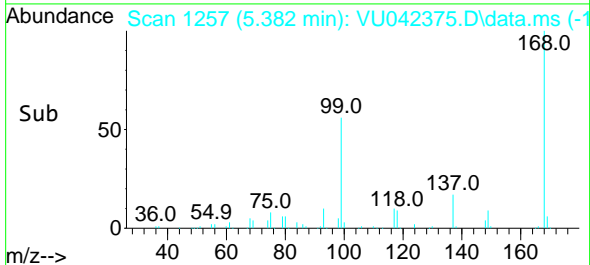
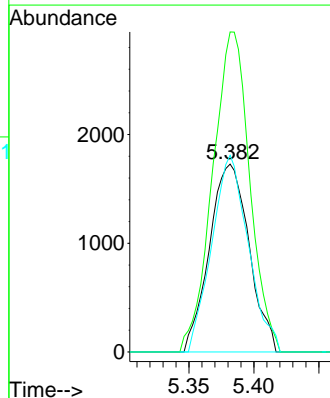
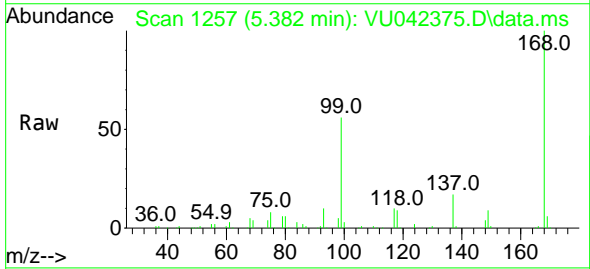


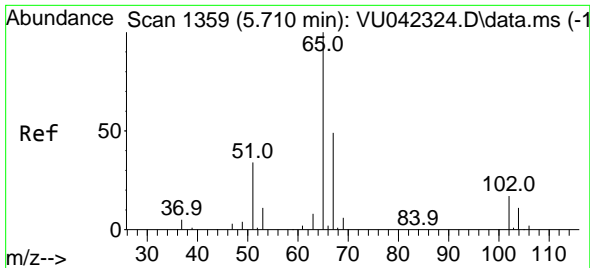
Tgt Ion: 42 Resp: 2418
 Ion Ratio Lower Upper
 42 100
 72 0.0 31.5 47.3#
 71 18.4 29.5 44.3#



#31
 Cyclohexane
 Concen: 1.25 ug/l
 RT: 5.382 min Scan# 1257
 Delta R.T. -0.016 min
 Lab File: VU042375.D
 Acq: 19 Feb 2021 20:31

Tgt Ion: 56 Resp: 3667
 Ion Ratio Lower Upper
 56 100
 69 170.3 24.9 37.3#
 84 104.7 63.7 95.5#

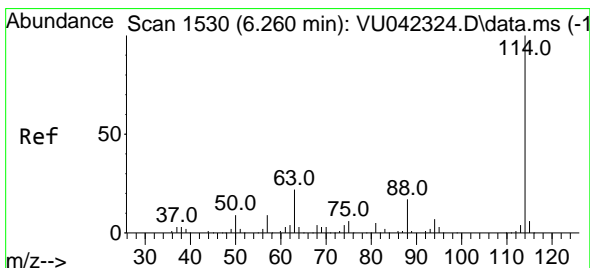
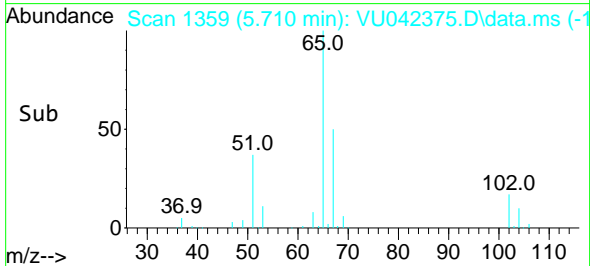
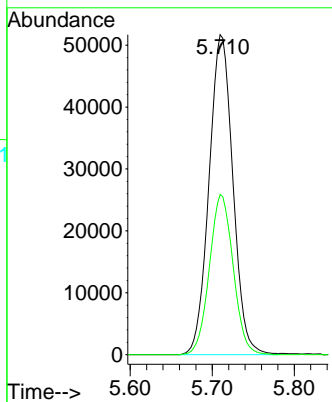
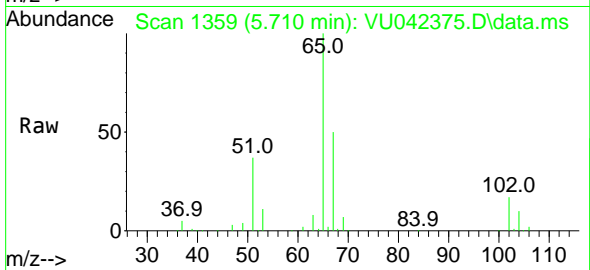




#33
 1,2-Dichloroethane-d4
 Concen: 46.85 ug/l
 RT: 5.710 min Scan# 1359
 Delta R.T. -0.000 min
 Lab File: VU042375.D
 Acq: 19 Feb 2021 20:31

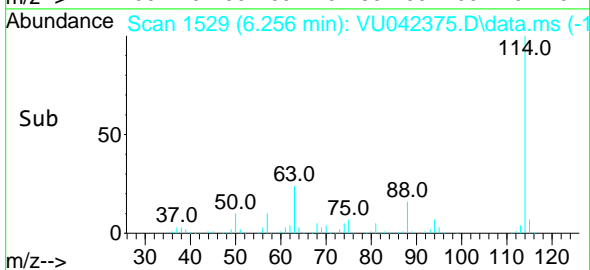
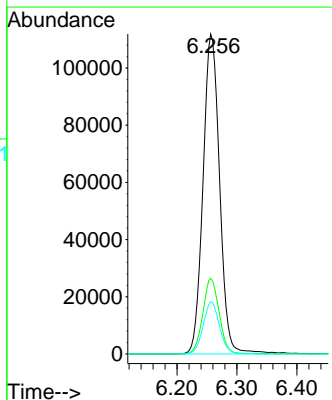
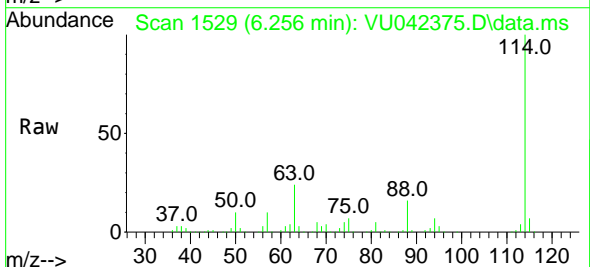
Instrument :
 MSVOA_U
ClientSampled :
 NWB-1579-1582

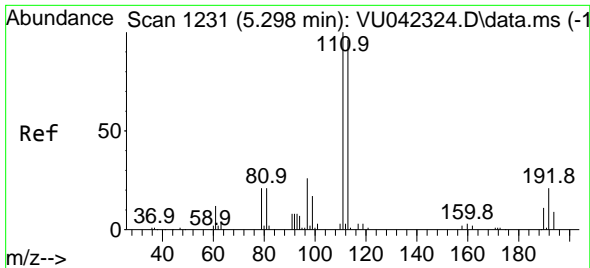
Tgt Ion	Resp	Lower	Upper
65	104713		
67	49.8	0.0	99.8



#34
 1,4-Difluorobenzene
 Concen: 50.00 ug/l
 RT: 6.256 min Scan# 1529
 Delta R.T. -0.003 min
 Lab File: VU042375.D
 Acq: 19 Feb 2021 20:31

Tgt Ion	Resp	Lower	Upper
114	215797		
63	23.7	0.0	44.2
88	16.3	0.0	33.4



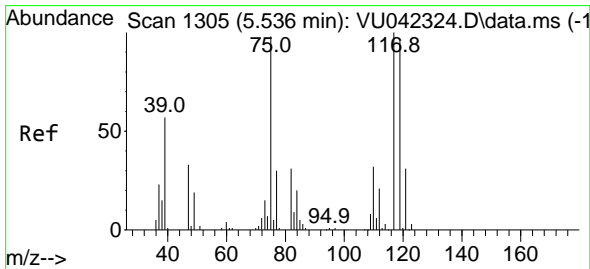
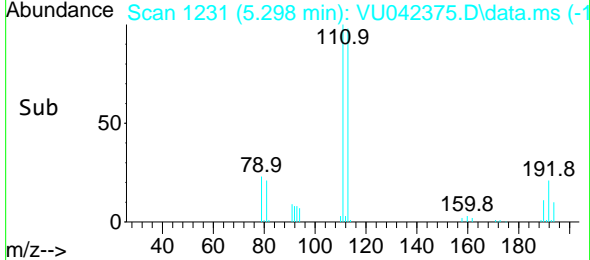
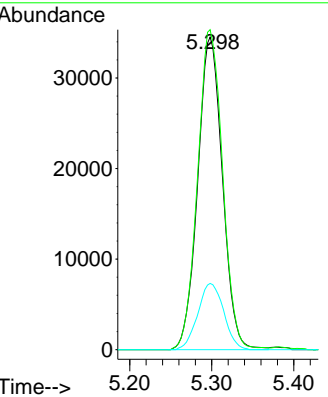
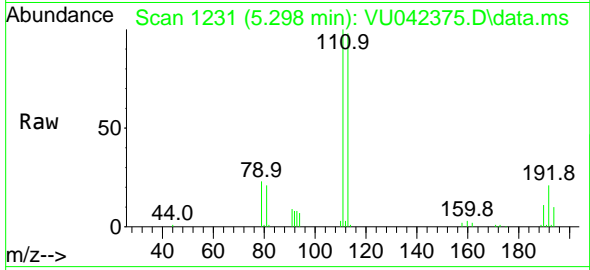


#35
 Dibromofluoromethane
 Concen: 47.37 ug/l
 RT: 5.298 min Scan# 1231
 Delta R.T. -0.000 min
 Lab File: VU042375.D
 Acq: 19 Feb 2021 20:31

Instrument :
 MSVOA_U
 ClientSampleId :
 NWB-1579-1582

Tgt Ion:113 Resp: 72151

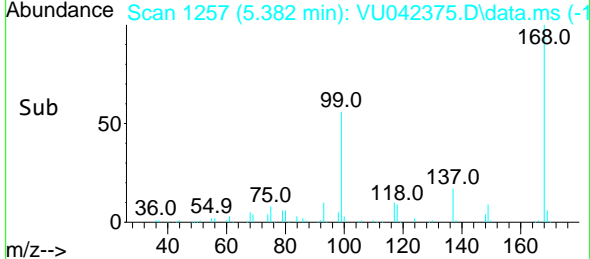
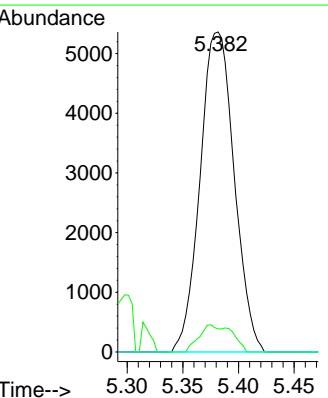
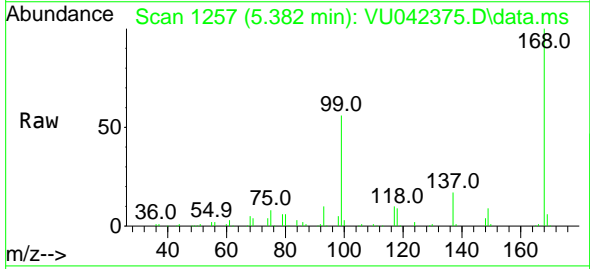
Ion	Ratio	Lower	Upper
113	100		
111	103.4	81.8	122.8
192	22.2	17.2	25.8

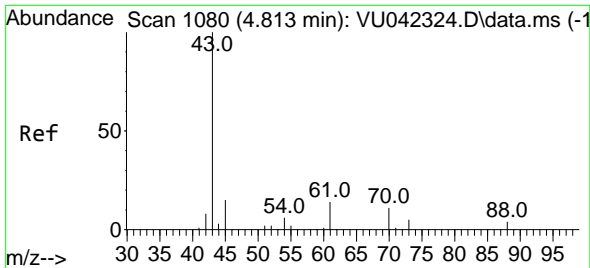


#36
 1,1-Dichloropropene
 Concen: 5.36 ug/l
 RT: 5.382 min Scan# 1257
 Delta R.T. -0.155 min
 Lab File: VU042375.D
 Acq: 19 Feb 2021 20:31

Tgt Ion: 75 Resp: 11438

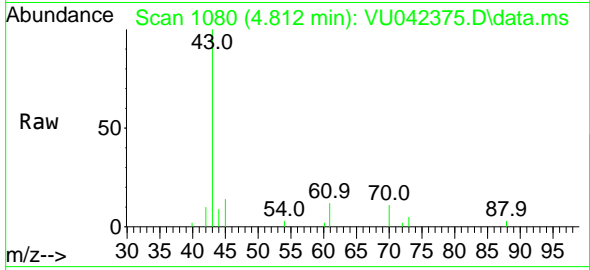
Ion	Ratio	Lower	Upper
75	100		
110	8.1	16.8	50.3#
77	0.0	24.8	37.2#



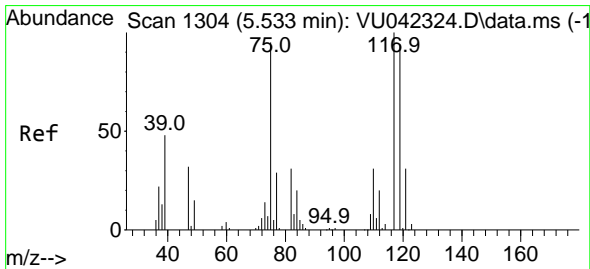
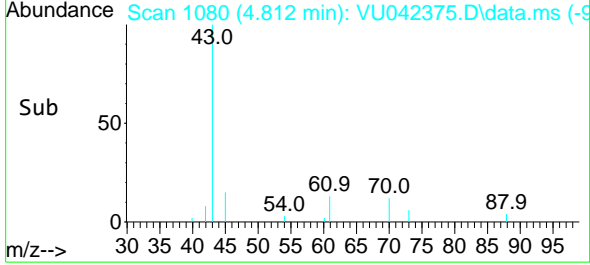
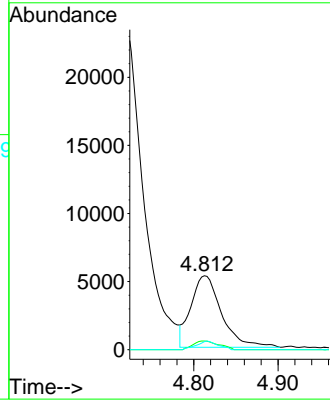


#37
 Ethyl Acetate
 Concen: 4.02 ug/l
 RT: 4.812 min Scan# 1080
 Delta R.T. -0.000 min
 Lab File: VU042375.D
 Acq: 19 Feb 2021 20:31

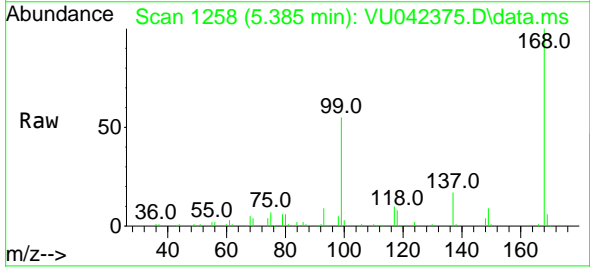
Instrument :
 MSVOA_U
 ClientSampled :
 NWB-1579-1582



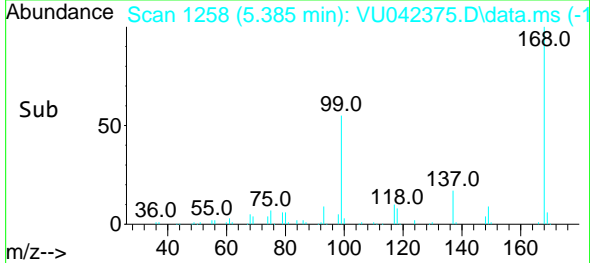
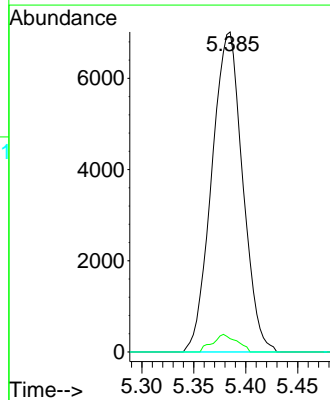
Tgt Ion: 43 Resp: 13334
 Ion Ratio Lower Upper
 43 100
 61 10.1 10.1 15.1
 70 8.4 7.2 10.8

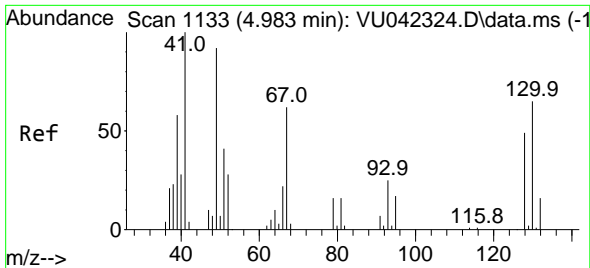


#38
 Carbon Tetrachloride
 Concen: 6.36 ug/l
 RT: 5.385 min Scan# 1258
 Delta R.T. -0.148 min
 Lab File: VU042375.D
 Acq: 19 Feb 2021 20:31



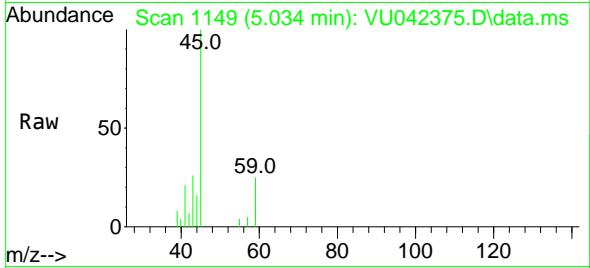
Tgt Ion: 117 Resp: 14498
 Ion Ratio Lower Upper
 117 100
 119 4.1 75.5 113.3#
 121 0.0 24.7 37.1#





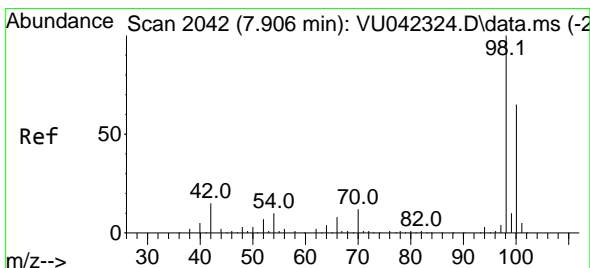
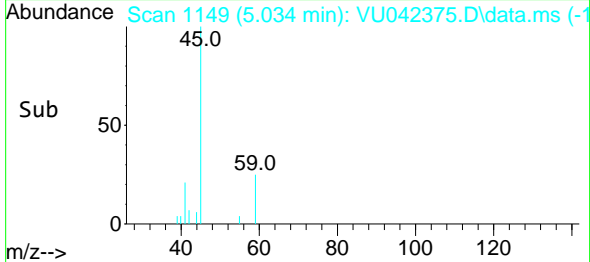
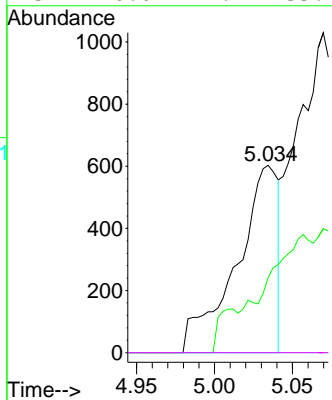
#41
 Methacrylonitrile
 Concen: 0.66 ug/l
 RT: 5.034 min Scan# 1149
 Delta R.T. 0.051 min
 Lab File: VU042375.D
 Acq: 19 Feb 2021 20:31

Instrument :
 MSVOA_U
 ClientSampleId :
 NWB-1579-1582



Tgt Ion: 41 Resp: 1127

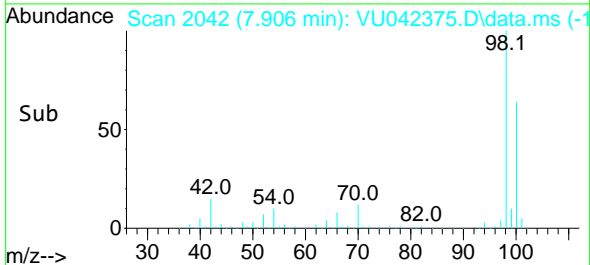
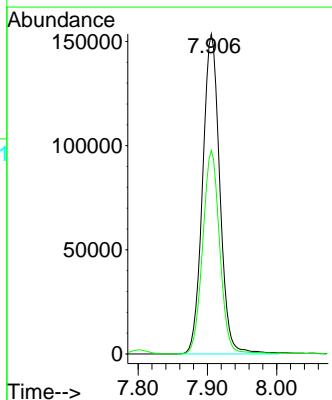
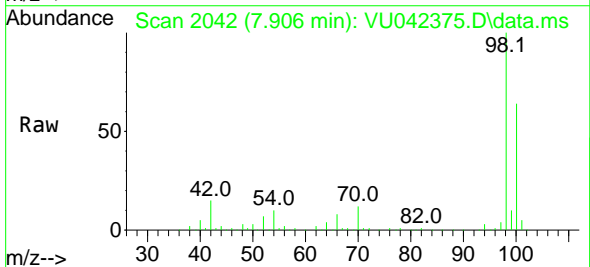
Ion	Ratio	Lower	Upper
41	100		
39	0.0	45.1	67.7#
67	0.0	50.2	75.2#
52	0.0	22.1	33.1#

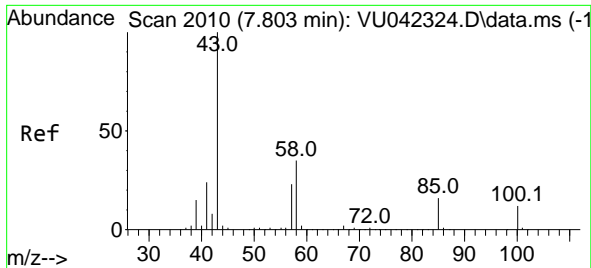


#50
 Toluene-d8
 Concen: 48.43 ug/l
 RT: 7.906 min Scan# 2042
 Delta R.T. -0.000 min
 Lab File: VU042375.D
 Acq: 19 Feb 2021 20:31

Tgt Ion: 98 Resp: 264193

Ion	Ratio	Lower	Upper
98	100		
100	62.9	50.2	75.2

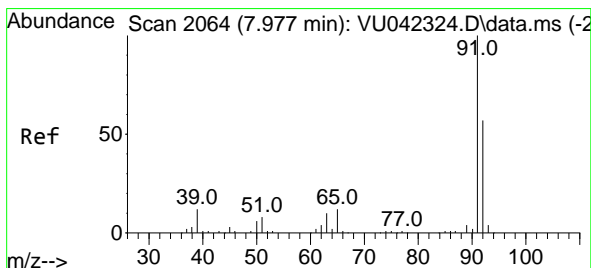
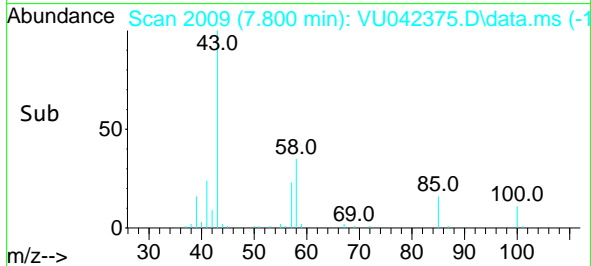
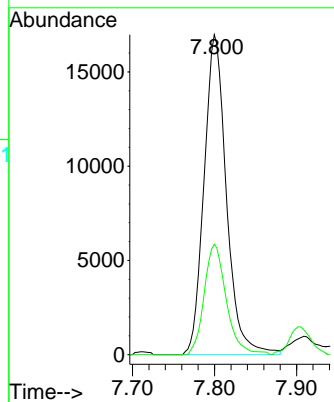
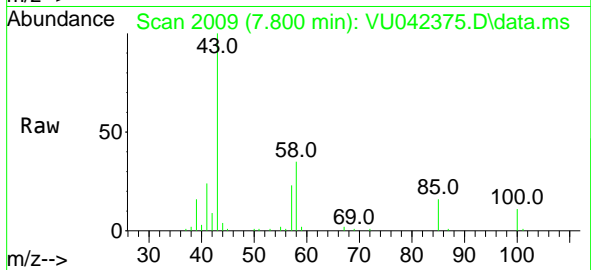




#51
 4-Methyl-2-Pentanone
 Concen: 9.78 ug/l
 RT: 7.800 min Scan# 2009
 Delta R.T. -0.003 min
 Lab File: VU042375.D
 Acq: 19 Feb 2021 20:31

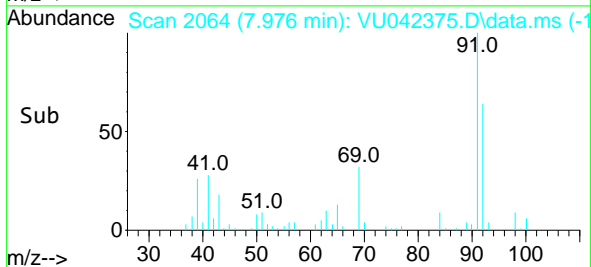
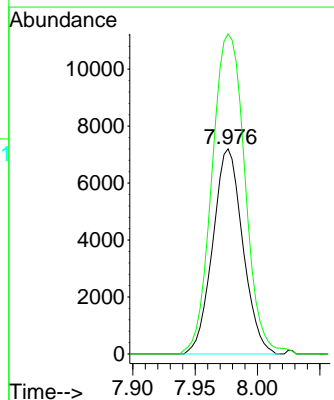
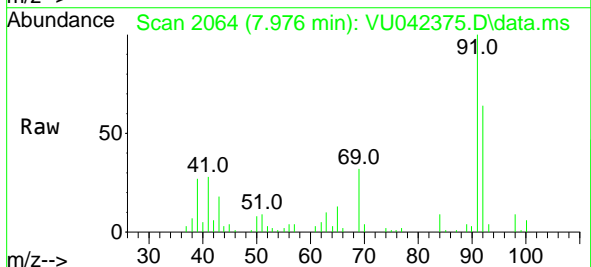
Instrument :
 MSVOA_U
 ClientSampleId :
 NWB-1579-1582

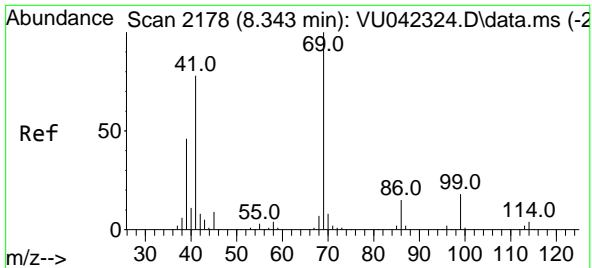
Tgt Ion: 43 Resp: 32254
 Ion Ratio Lower Upper
 43 100
 58 34.1 28.1 42.1



#52
 Toluene
 Concen: 3.27 ug/l
 RT: 7.976 min Scan# 2064
 Delta R.T. -0.000 min
 Lab File: VU042375.D
 Acq: 19 Feb 2021 20:31

Tgt Ion: 92 Resp: 12094
 Ion Ratio Lower Upper
 92 100
 91 171.1 140.3 210.5

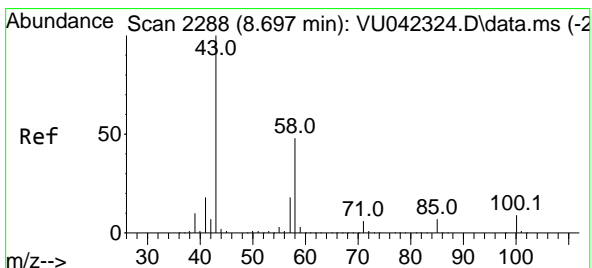
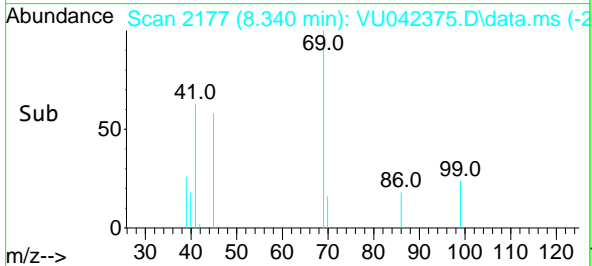
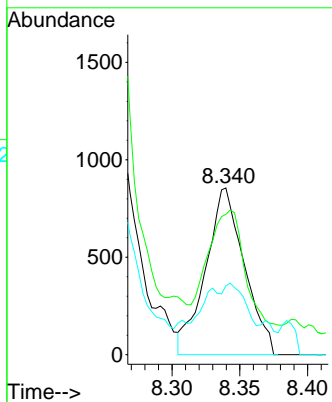
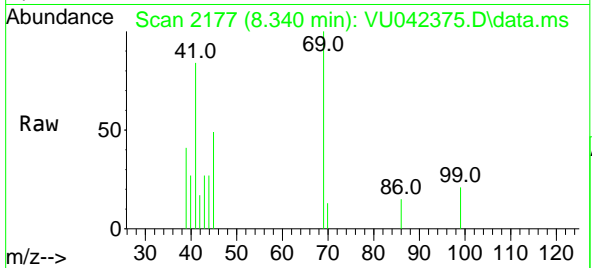




#56
 Ethyl methacrylate
 Concen: 0.64 ug/l
 RT: 8.340 min Scan# 2177
 Delta R.T. -0.003 min
 Lab File: VU042375.D
 Acq: 19 Feb 2021 20:31

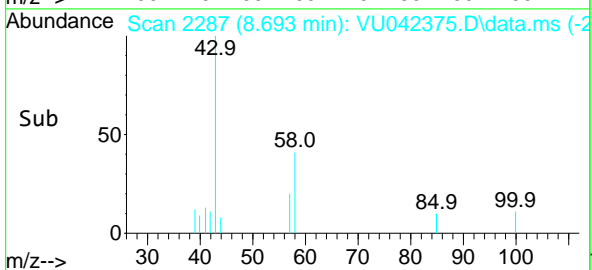
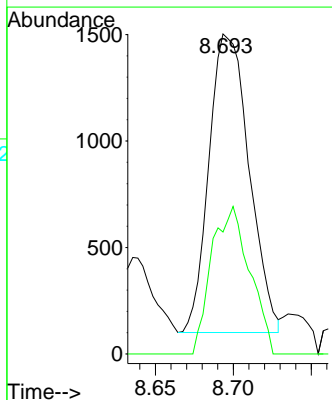
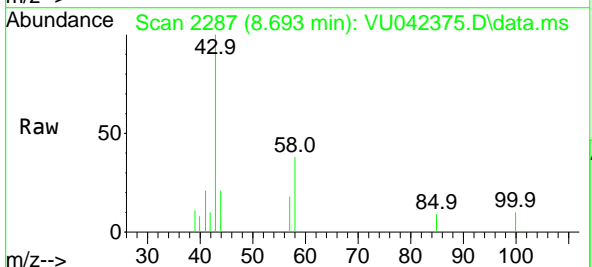
Instrument : MSVOA_U
 ClientSampleId : NWB-1579-1582

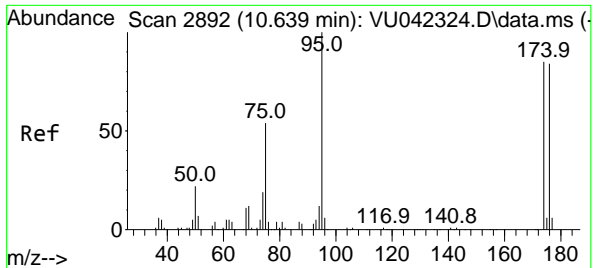
Tgt Ion	Resp	Lower	Upper
69	1698		
41	70.7	62.8	94.2
39	9.4	36.2	54.2



#59
 2-Hexanone
 Concen: 0.95 ug/l
 RT: 8.693 min Scan# 2287
 Delta R.T. -0.003 min
 Lab File: VU042375.D
 Acq: 19 Feb 2021 20:31

Tgt Ion	Resp	Lower	Upper
43	2508		
58	47.1	24.0	72.0

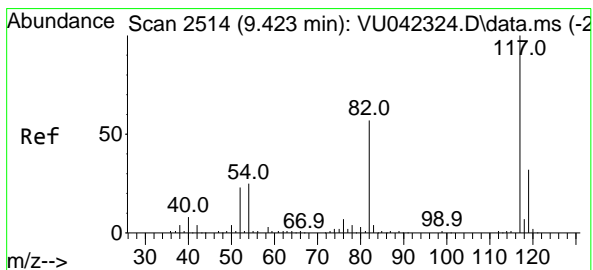
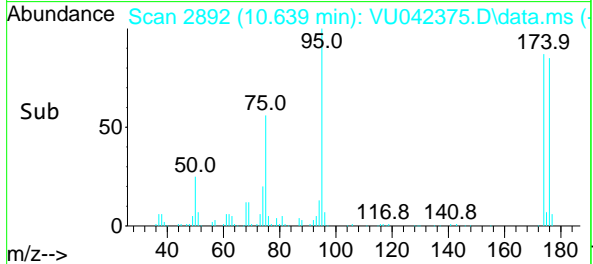
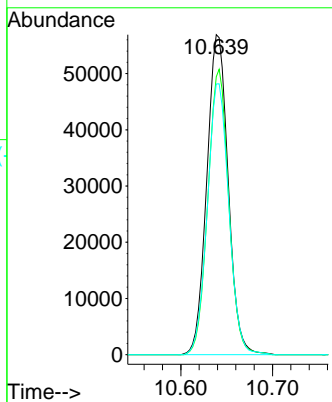
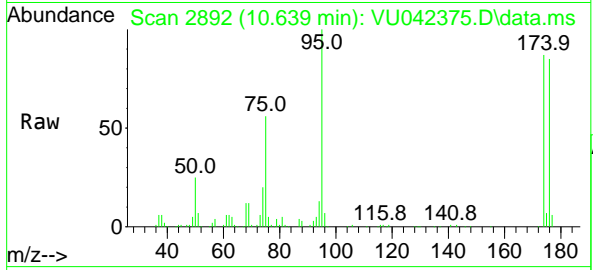




#62
 4-Bromofluorobenzene
 Concen: 42.84 ug/l
 RT: 10.639 min Scan# 2892
 Delta R.T. -0.000 min
 Lab File: VU042375.D
 Acq: 19 Feb 2021 20:31

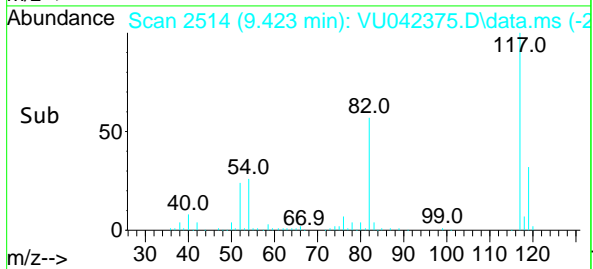
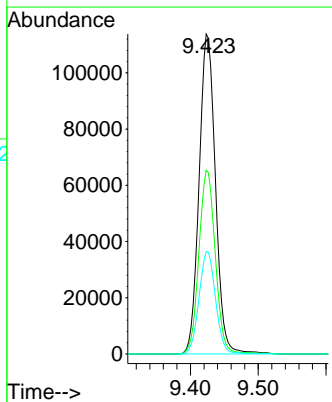
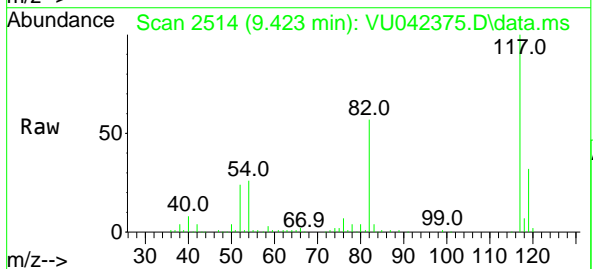
Instrument :
 MSVOA_U
Client Sampled :
 NWB-1579-1582

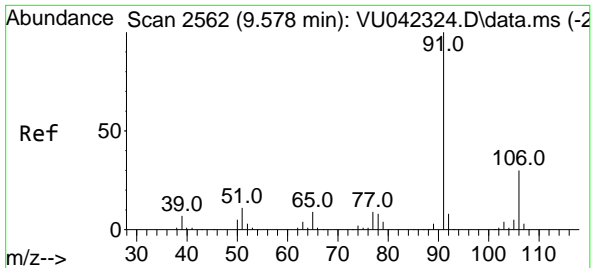
Tgt Ion:	95	Resp:	92100
Ion Ratio	100	Lower	Upper
95	100		
174	86.8	0.0	172.2
176	85.2	0.0	168.8



#63
 Chlorobenzene-d5
 Concen: 50.00 ug/l
 RT: 9.423 min Scan# 2514
 Delta R.T. -0.000 min
 Lab File: VU042375.D
 Acq: 19 Feb 2021 20:31

Tgt Ion:	117	Resp:	191042
Ion Ratio	100	Lower	Upper
117	100		
82	57.4	45.8	68.6
119	32.0	25.8	38.8

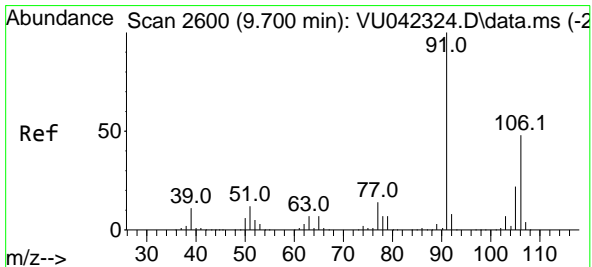
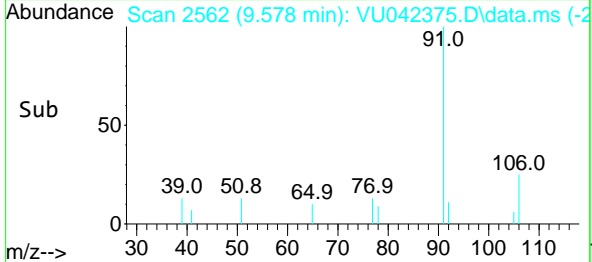
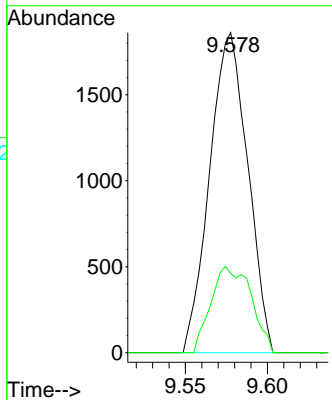
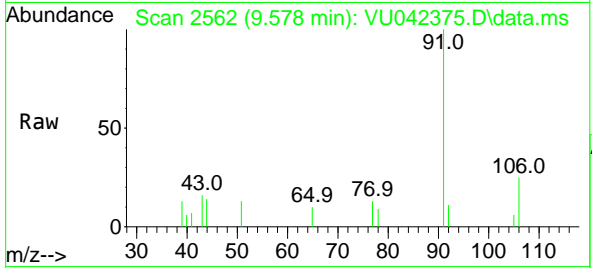




#67
 Ethyl Benzene
 Concen: 0.44 ug/l
 RT: 9.578 min Scan# 2562
 Delta R.T. -0.000 min
 Lab File: VU042375.D
 Acq: 19 Feb 2021 20:31

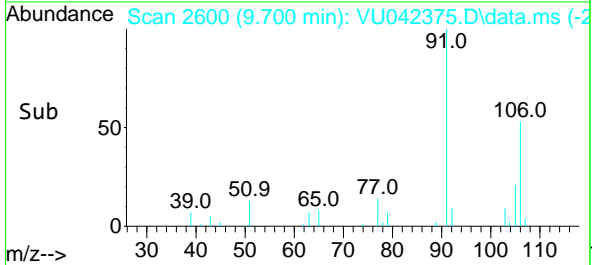
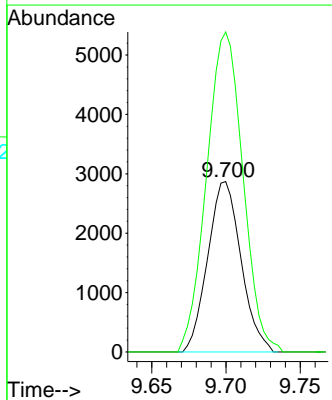
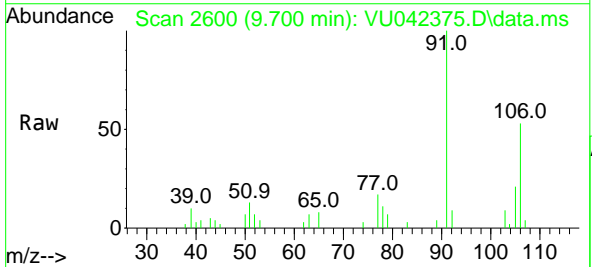
Instrument :
 MSVOA_U
 ClientSampled :
 NWB-1579-1582

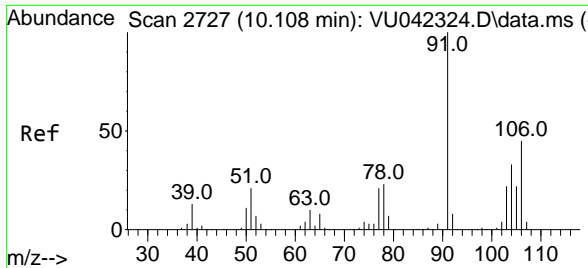
Tgt Ion: 91 Resp: 3000
 Ion Ratio Lower Upper
 91 100
 106 24.8 24.1 36.1



#68
 m/p-Xylenes
 Concen: 1.76 ug/l
 RT: 9.700 min Scan# 2600
 Delta R.T. -0.000 min
 Lab File: VU042375.D
 Acq: 19 Feb 2021 20:31

Tgt Ion: 106 Resp: 4479
 Ion Ratio Lower Upper
 106 100
 91 204.0 169.9 254.9

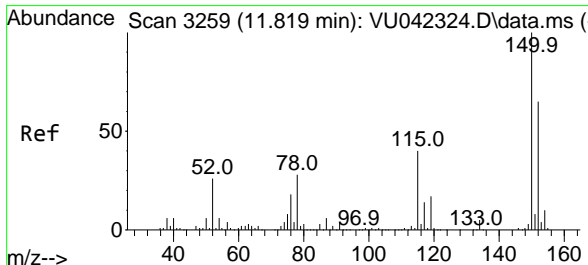
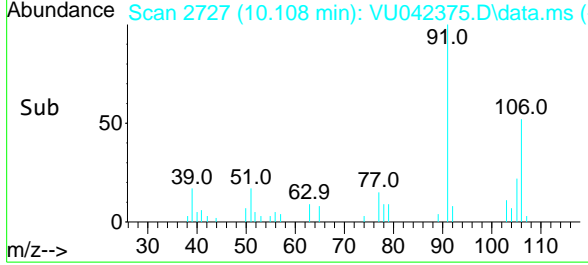
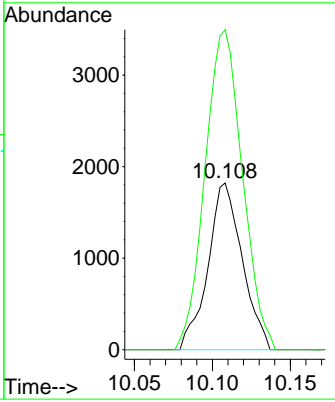
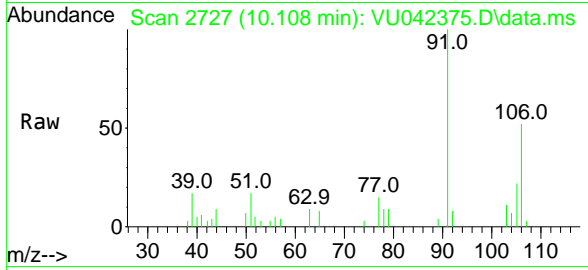




#69
 o-Xylene
 Concen: 1.12 ug/l
 RT: 10.108 min Scan# 2727
 Delta R.T. -0.000 min
 Lab File: VU042375.D
 Acq: 19 Feb 2021 20:31

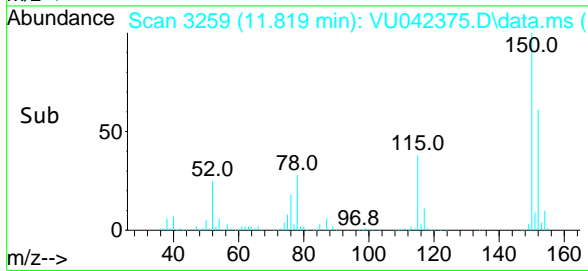
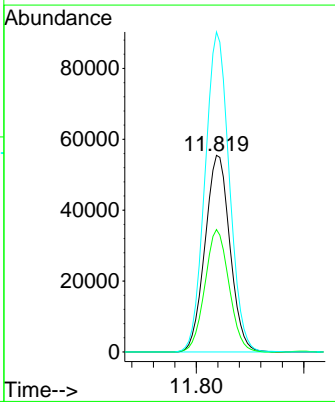
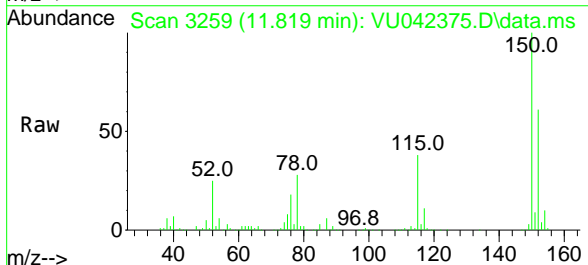
Instrument :
 MSVOA_U
ClientSampleId :
 NWB-1579-1582

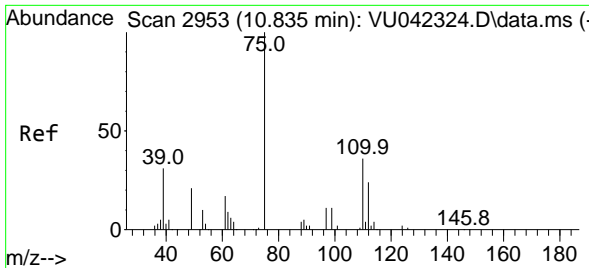
Tgt Ion:106 Resp: 2782
 Ion Ratio Lower Upper
 106 100
 91 209.2 111.2 333.6



#72
 1,4-Dichlorobenzene-d4
 Concen: 50.00 ug/l
 RT: 11.819 min Scan# 3259
 Delta R.T. -0.000 min
 Lab File: VU042375.D
 Acq: 19 Feb 2021 20:31

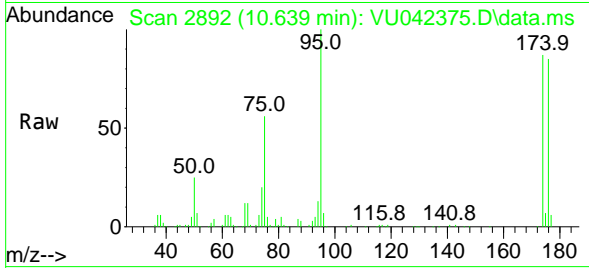
Tgt Ion:152 Resp: 89440
 Ion Ratio Lower Upper
 152 100
 115 60.3 41.5 124.6
 150 158.6 0.0 342.4



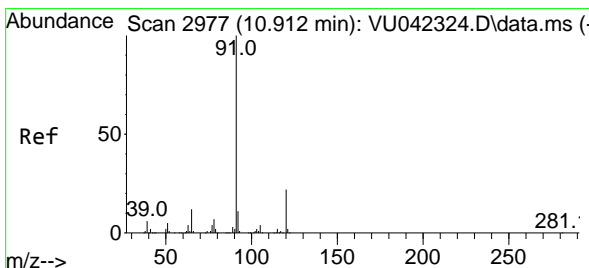
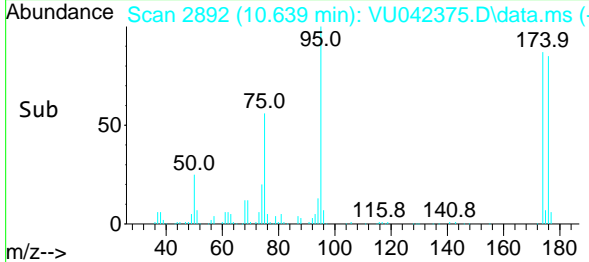
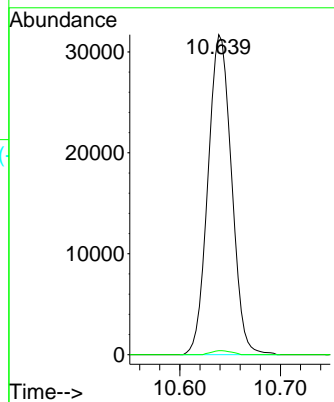


#76
 1,2,3-Trichloropropane
 Concen: 23.34 ug/l
 RT: 10.639 min Scan# 2892
 Delta R.T. -0.196 min
 Lab File: VU042375.D
 Acq: 19 Feb 2021 20:31

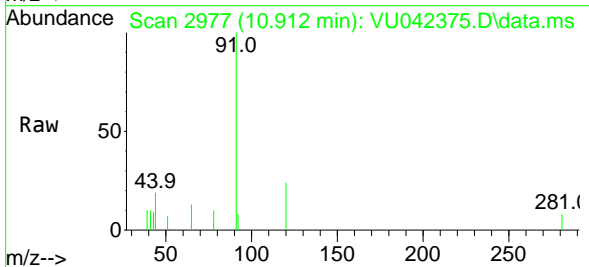
Instrument :
 MSVOA_U
 ClientSampled :
 NWB-1579-1582



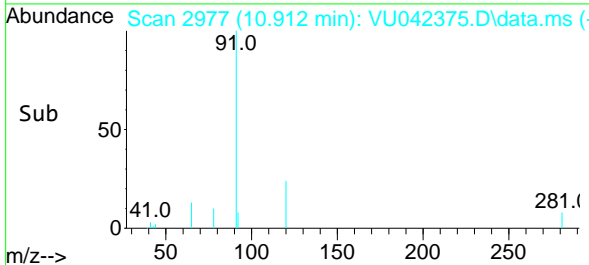
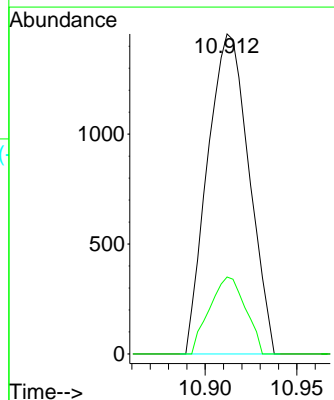
Tgt Ion: 75 Resp: 51619
 Ion Ratio Lower Upper
 75 100
 77 1.1 20.2 60.5#

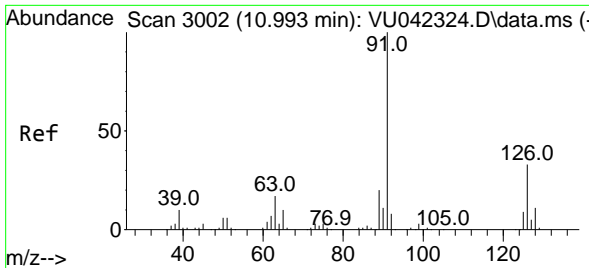


#78
 n-propylbenzene
 Concen: 0.33 ug/l
 RT: 10.912 min Scan# 2977
 Delta R.T. -0.000 min
 Lab File: VU042375.D
 Acq: 19 Feb 2021 20:31



Tgt Ion: 91 Resp: 2284
 Ion Ratio Lower Upper
 91 100
 120 20.9 11.2 33.6

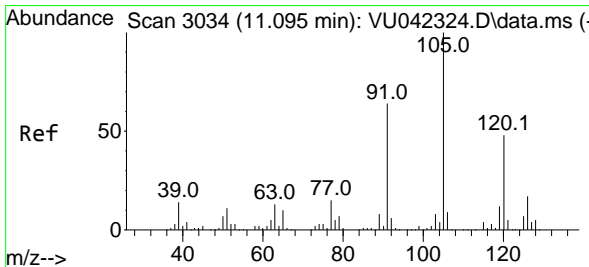
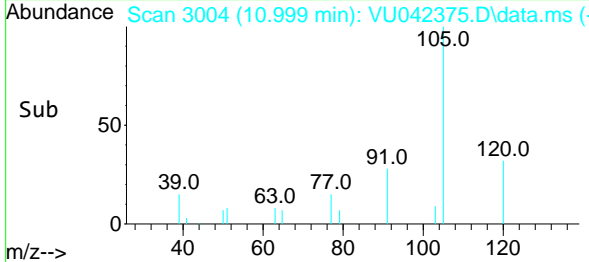
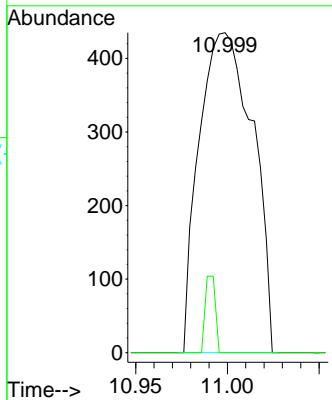
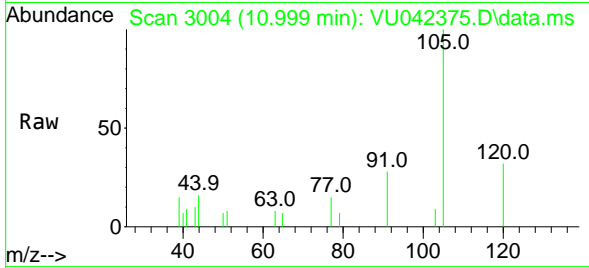




#79
 2-Chlorotoluene
 Concen: 0.21 ug/l
 RT: 10.999 min Scan# 3004
 Delta R.T. 0.006 min
 Lab File: VU042375.D
 Acq: 19 Feb 2021 20:31

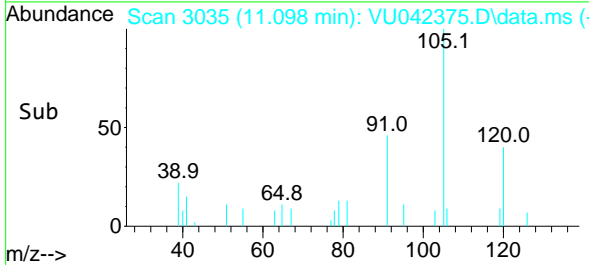
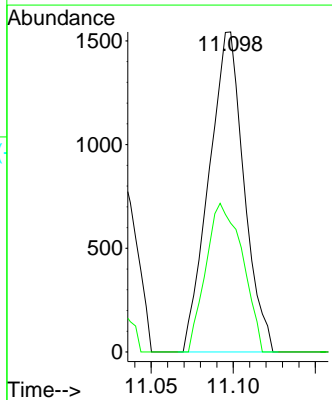
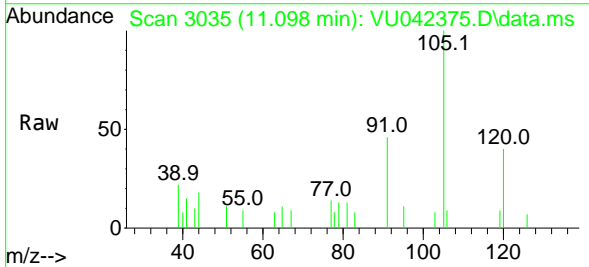
Instrument :
 MSVOA_U
ClientSampled :
 NWB-1579-1582

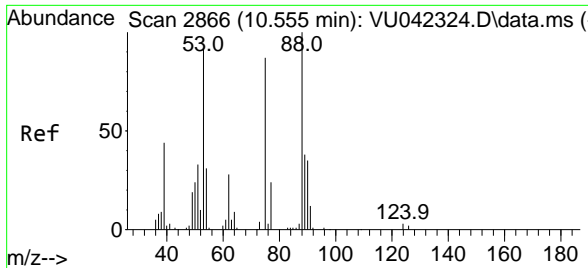
Tgt Ion: 91 Resp: 883
 Ion Ratio Lower Upper
 91 100
 126 4.5 16.7 50.0#



#80
 1,3,5-Trimethylbenzene
 Concen: 0.45 ug/l
 RT: 11.098 min Scan# 3035
 Delta R.T. 0.003 min
 Lab File: VU042375.D
 Acq: 19 Feb 2021 20:31

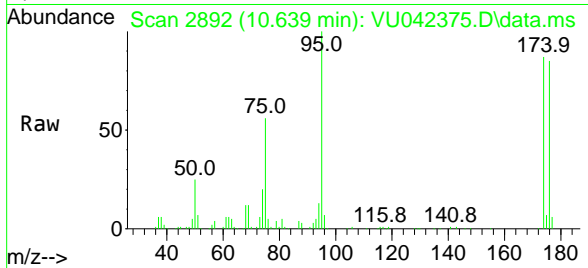
Tgt Ion: 105 Resp: 2289
 Ion Ratio Lower Upper
 105 100
 120 48.6 23.8 71.4



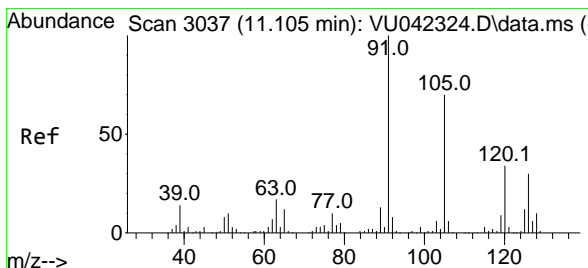
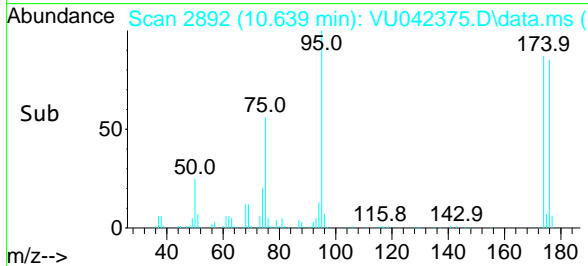
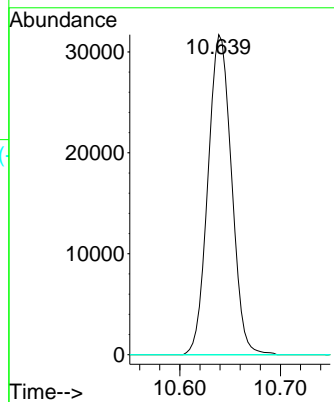


#81
 trans-1,4-Dichloro-2-butene
 Concen: 63.46 ug/l
 RT: 10.639 min Scan# 2892
 Delta R.T. 0.083 min
 Lab File: VU042375.D
 Acq: 19 Feb 2021 20:31

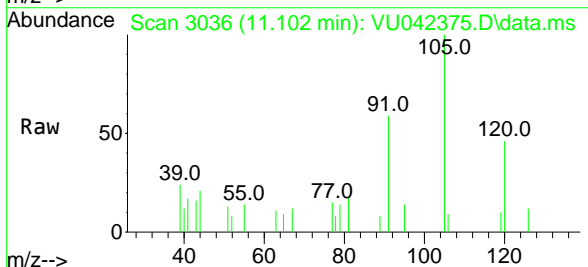
Instrument :
 MSVOA_U
 ClientSampleId :
 NWB-1579-1582



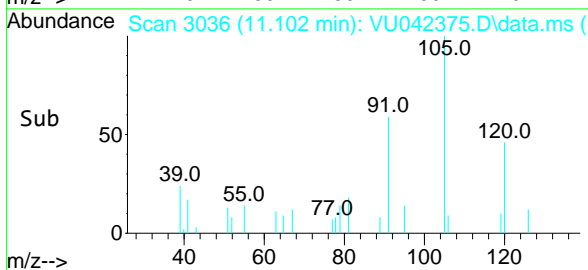
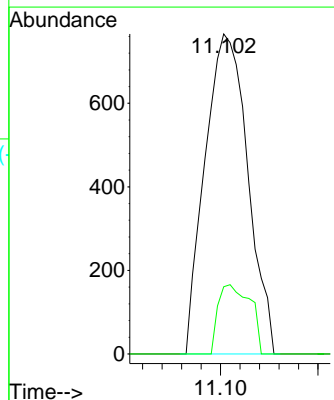
Tgt Ion: 75 Resp: 51619
 Ion Ratio Lower Upper
 75 100
 53 0.0 85.6 128.4#
 89 0.0 35.7 53.5#

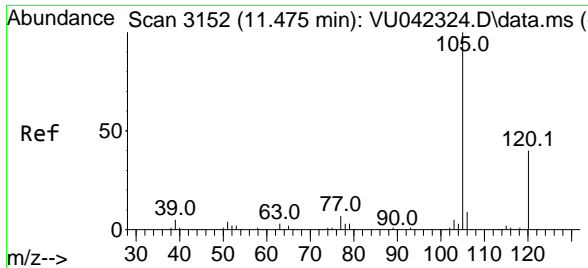


#82
 4-Chlorotoluene
 Concen: 0.24 ug/l
 RT: 11.102 min Scan# 3036
 Delta R.T. -0.003 min
 Lab File: VU042375.D
 Acq: 19 Feb 2021 20:31



Tgt Ion: 91 Resp: 1169
 Ion Ratio Lower Upper
 91 100
 126 16.2 14.6 44.0

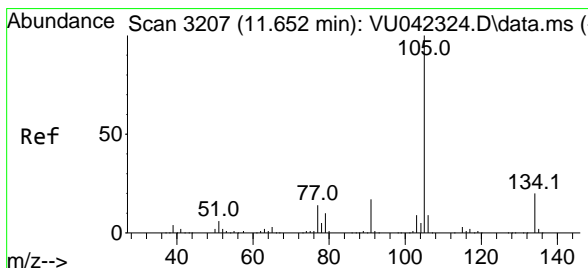
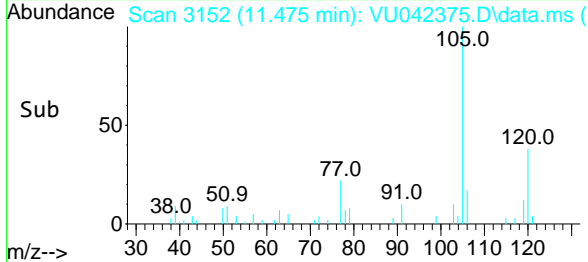
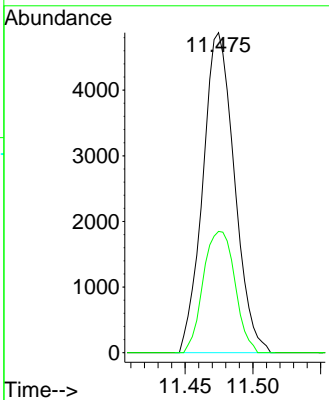
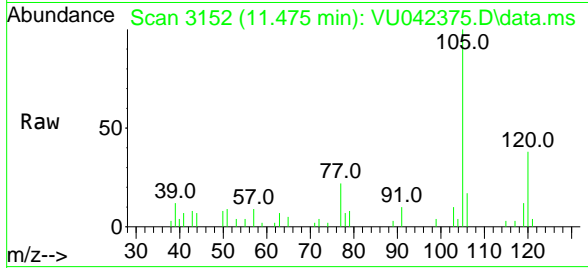




#84
 1,2,4-Trimethylbenzene
 Concen: 1.54 ug/l
 RT: 11.475 min Scan# 3152
 Delta R.T. -0.000 min
 Lab File: VU042375.D
 Acq: 19 Feb 2021 20:31

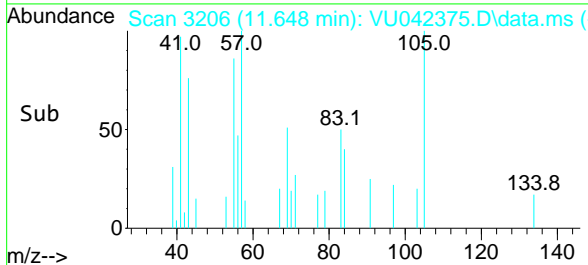
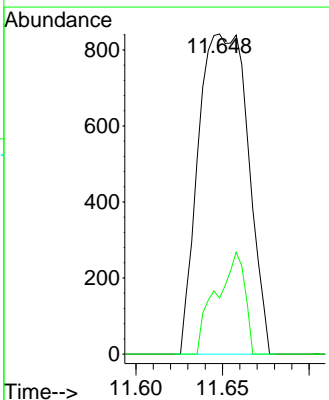
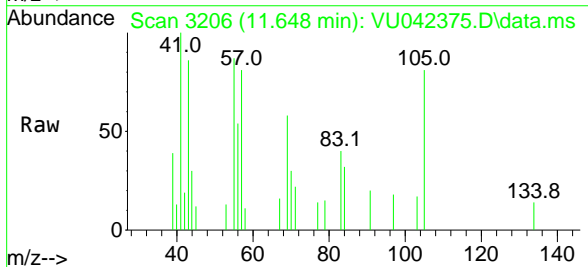
Instrument :
 MSVOA_U
 ClientSampleId :
 NWB-1579-1582

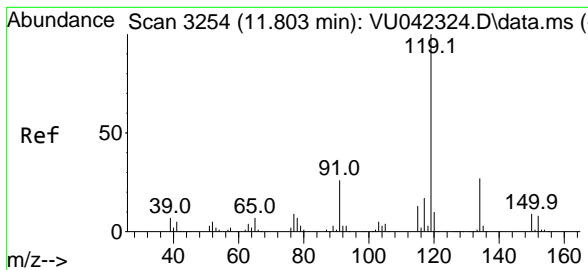
Tgt Ion:105 Resp: 7906
 Ion Ratio Lower Upper
 105 100
 120 37.9 22.3 66.8



#85
 sec-Butylbenzene
 Concen: 0.29 ug/l
 RT: 11.648 min Scan# 3206
 Delta R.T. -0.003 min
 Lab File: VU042375.D
 Acq: 19 Feb 2021 20:31

Tgt Ion:105 Resp: 1677
 Ion Ratio Lower Upper
 105 100
 134 18.3 10.0 30.0

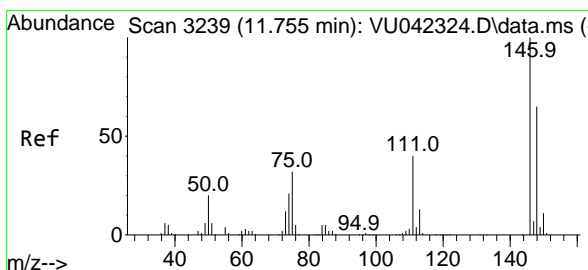
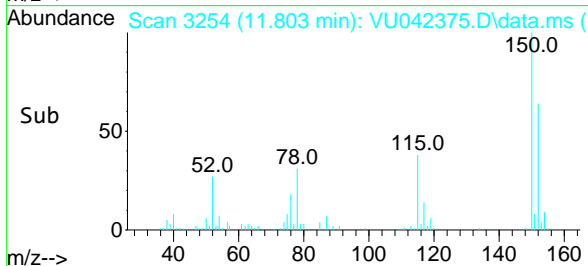
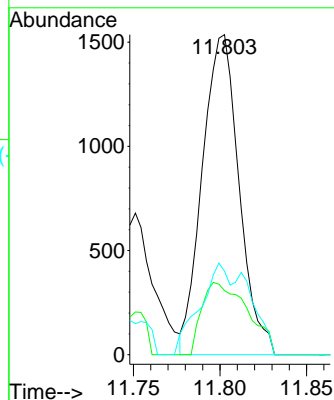
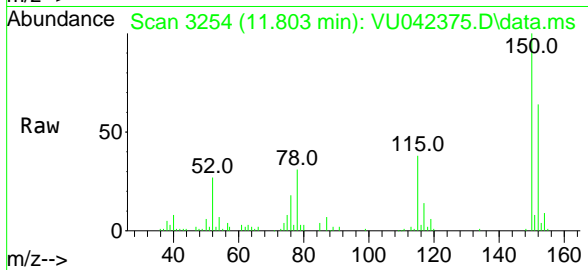




#86
 p-Isopropyltoluene
 Concen: 0.42 ug/l
 RT: 11.803 min Scan# 3254
 Delta R.T. -0.000 min
 Lab File: VU042375.D
 Acq: 19 Feb 2021 20:31

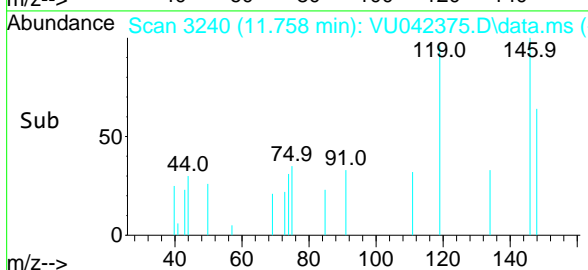
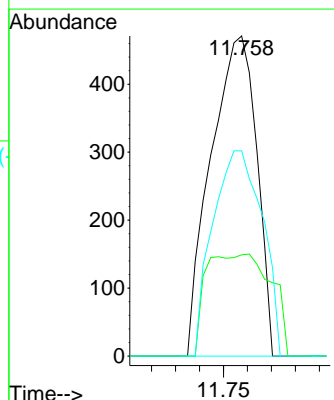
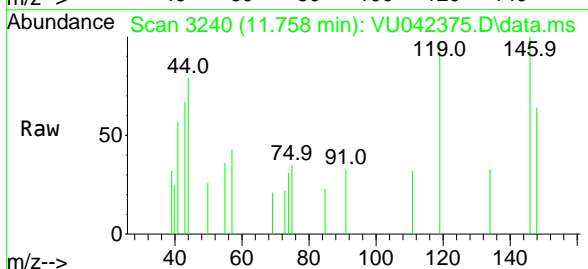
Instrument :
 MSVOA_U
 ClientSampleId :
 NWB-1579-1582

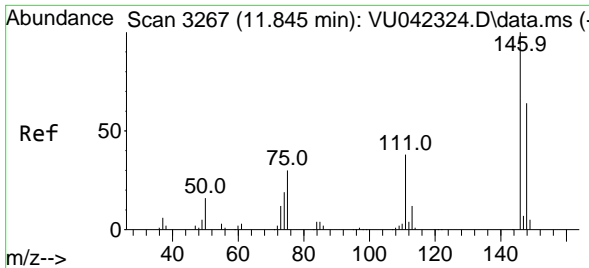
Tgt Ion	Resp	Lower	Upper
119	100		
134	28.1	13.2	39.6
91	23.1	12.8	38.3



#87
 1,3-Dichlorobenzene
 Concen: 0.23 ug/l
 RT: 11.758 min Scan# 3240
 Delta R.T. 0.003 min
 Lab File: VU042375.D
 Acq: 19 Feb 2021 20:31

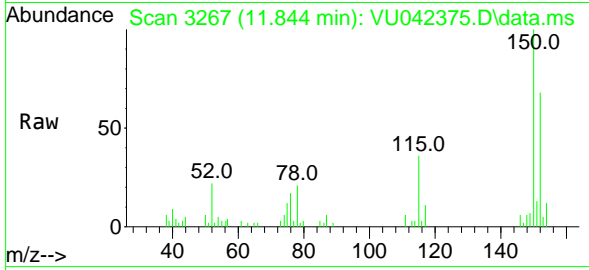
Tgt Ion	Resp	Lower	Upper
146	100		
111	17.2	19.9	59.6#
148	69.3	32.0	96.2



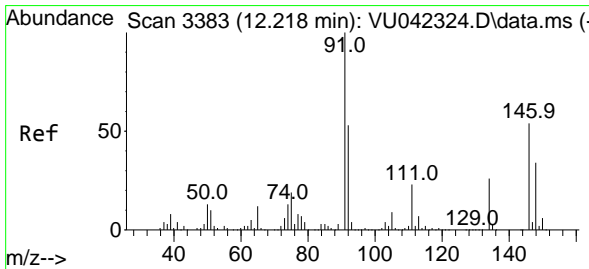
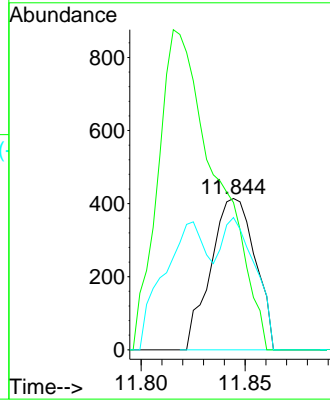
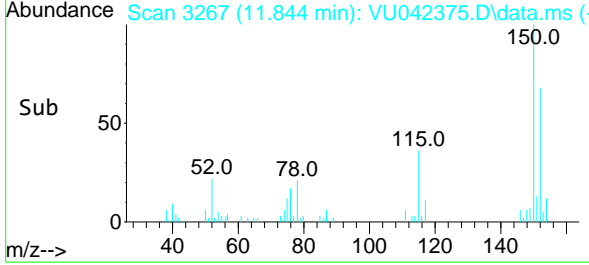


#88
 1,4-Dichlorobenzene
 Concen: 0.22 ug/l
 RT: 11.844 min Scan# 3267
 Delta R.T. -0.000 min
 Lab File: VU042375.D
 Acq: 19 Feb 2021 20:31

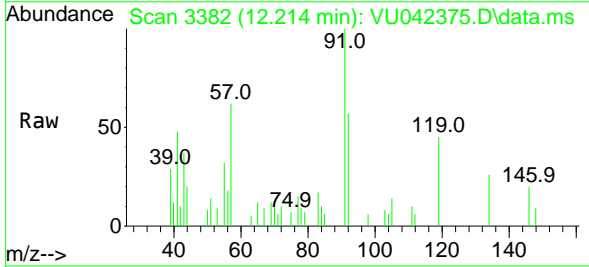
Instrument :
 MSVOA_U
 ClientSampleId :
 NWB-1579-1582



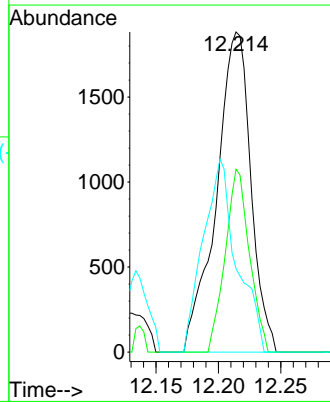
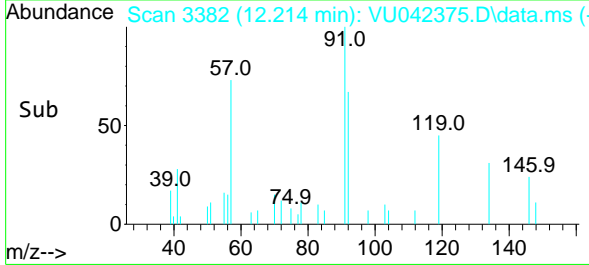
Tgt Ion:146 Resp: 615
 Ion Ratio Lower Upper
 146 100
 111 0.0 19.7 59.0#
 148 68.3 32.8 98.3

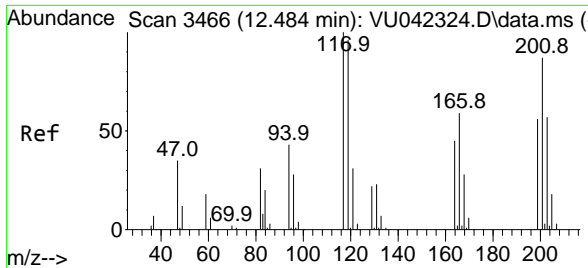


#89
 n-Butylbenzene
 Concen: 0.76 ug/l
 RT: 12.214 min Scan# 3382
 Delta R.T. -0.003 min
 Lab File: VU042375.D
 Acq: 19 Feb 2021 20:31



Tgt Ion: 91 Resp: 3621
 Ion Ratio Lower Upper
 91 100
 92 40.2 26.2 78.6
 134 58.6 12.7 38.1#

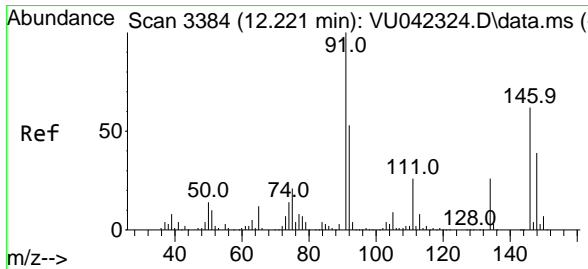
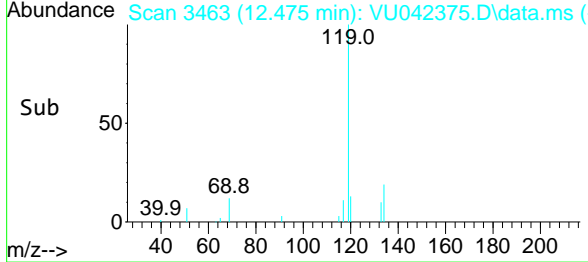
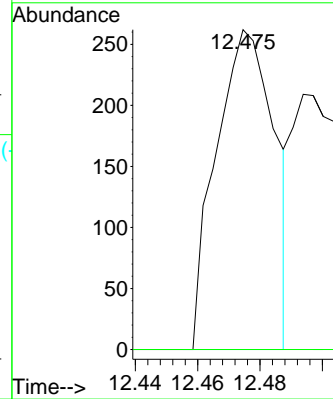
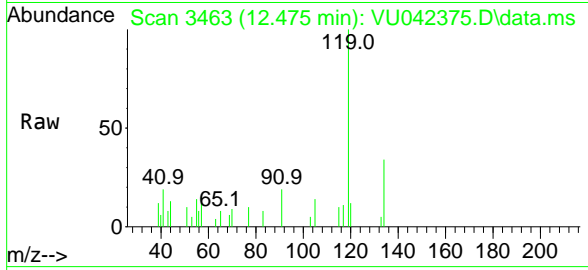




#90
 Hexachloroethane
 Concen: 0.36 ug/l
 RT: 12.475 min Scan# 3463
 Delta R.T. -0.010 min
 Lab File: VU042375.D
 Acq: 19 Feb 2021 20:31

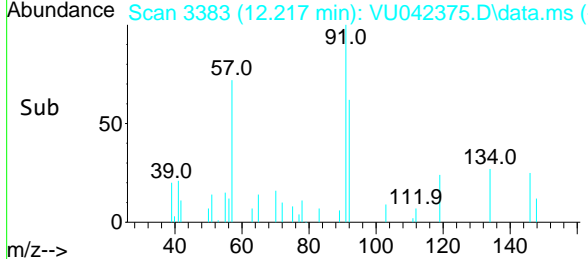
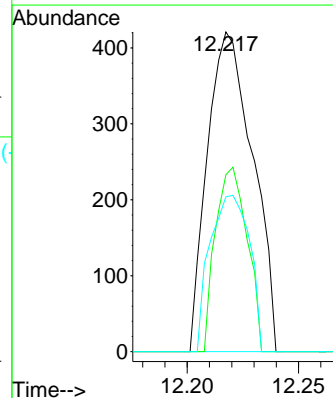
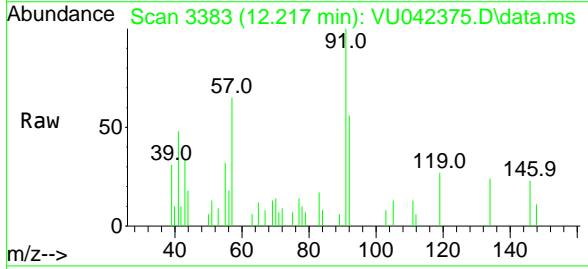
Instrument :
 MSVOA_U
 ClientSampleId :
 NWB-1579-1582

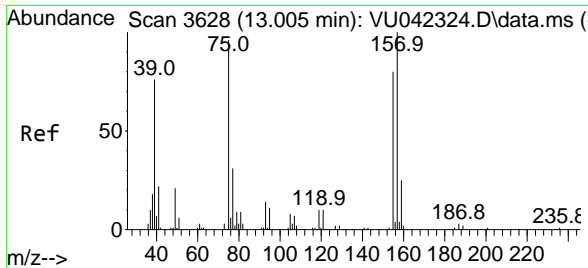
Tgt Ion:117 Resp: 340
 Ion Ratio Lower Upper
 117 100
 201 0.0 43.5 130.7#



#91
 1,2-Dichlorobenzene
 Concen: 0.21 ug/l
 RT: 12.217 min Scan# 3383
 Delta R.T. -0.003 min
 Lab File: VU042375.D
 Acq: 19 Feb 2021 20:31

Tgt Ion:146 Resp: 596
 Ion Ratio Lower Upper
 146 100
 111 40.3 20.8 62.4
 148 42.6 31.9 95.7



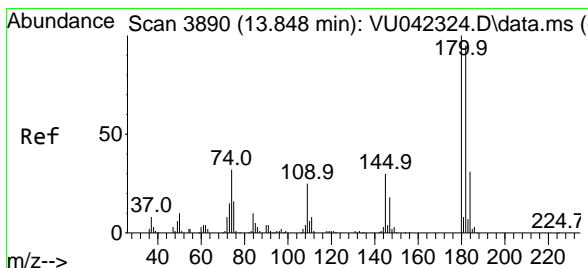
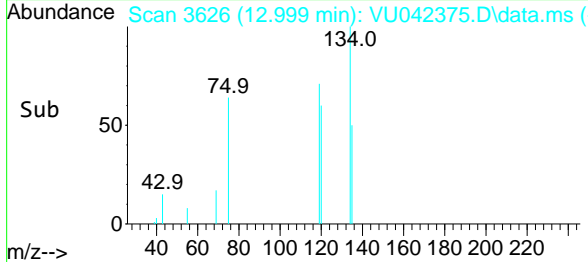
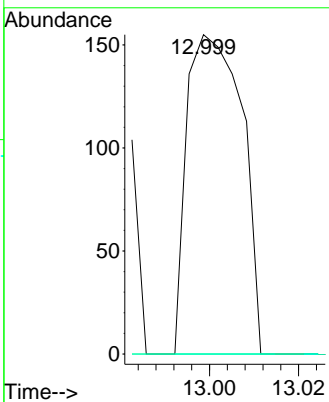
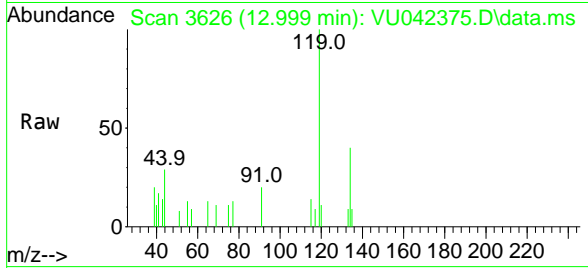


#92
 1,2-Dibromo-3-Chloropropane
 Concen: 0.21 ug/l
 RT: 12.999 min Scan# 3626
 Delta R.T. -0.007 min
 Lab File: VU042375.D
 Acq: 19 Feb 2021 20:31

Instrument :
 MSVOA_U
 ClientSampleId :
 NWB-1579-1582

Tgt Ion: 75 Resp: 133

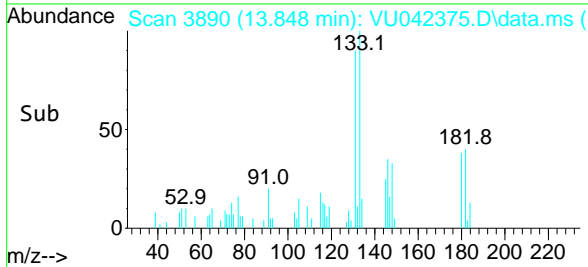
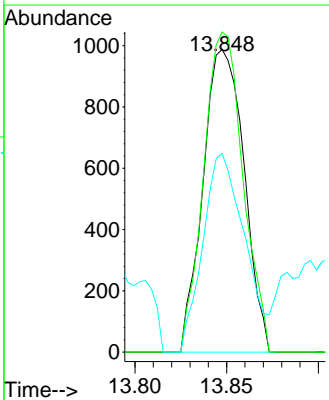
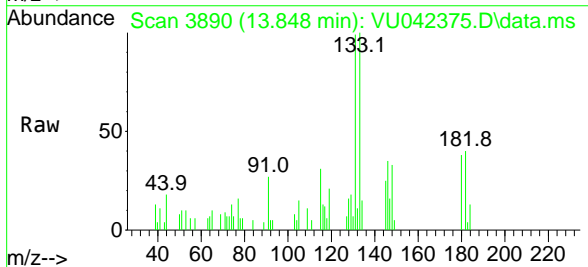
Ion	Ratio	Lower	Upper
75	100		
155	0.0	41.7	125.1#
157	0.0	53.9	161.7#

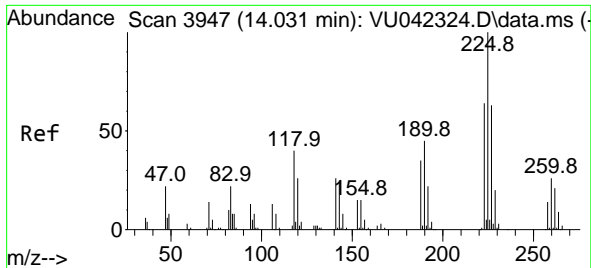


#93
 1,2,4-Trichlorobenzene
 Concen: 2.44 ug/l
 RT: 13.848 min Scan# 3890
 Delta R.T. -0.001 min
 Lab File: VU042375.D
 Acq: 19 Feb 2021 20:31

Tgt Ion: 180 Resp: 1537

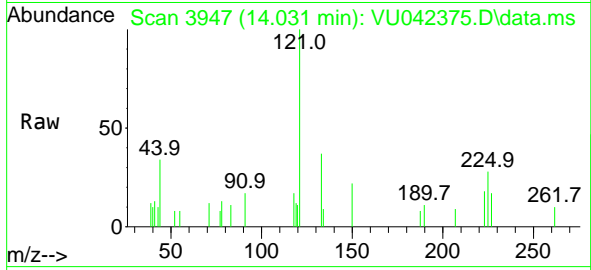
Ion	Ratio	Lower	Upper
180	100		
182	101.5	46.9	140.8
145	67.3	14.4	43.4#





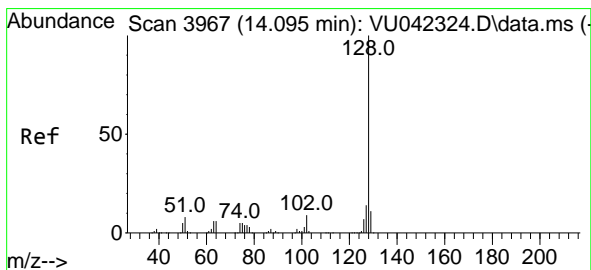
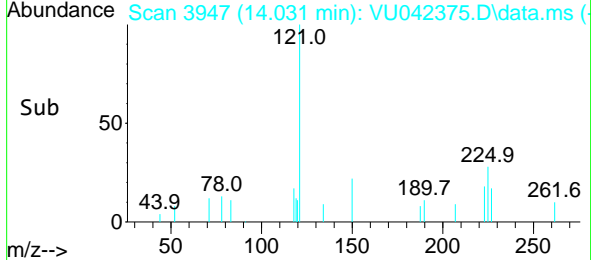
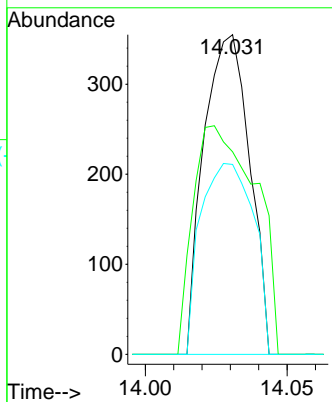
#94
 Hexachlorobutadiene
 Concen: 0.41 ug/l
 RT: 14.031 min Scan# 3947
 Delta R.T. -0.000 min
 Lab File: VU042375.D
 Acq: 19 Feb 2021 20:31

Instrument :
 MSVOA_U
ClientSampled :
 NWB-1579-1582

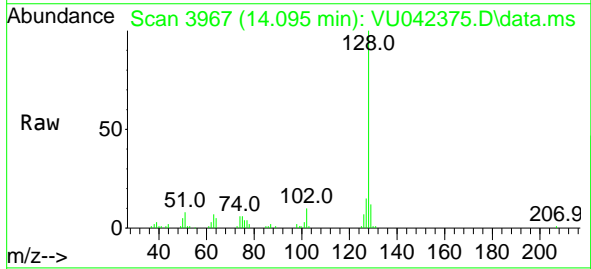


Tgt Ion:225 Resp: 397

Ion	Ratio	Lower	Upper
225	100		
223	97.7	32.3	96.9#
227	69.0	31.8	95.4

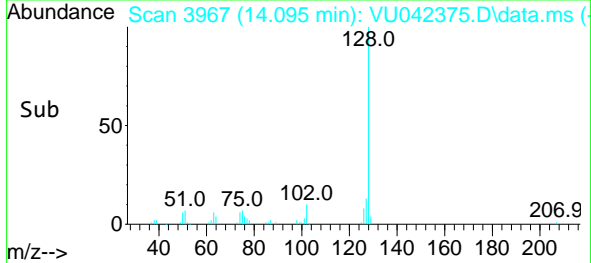
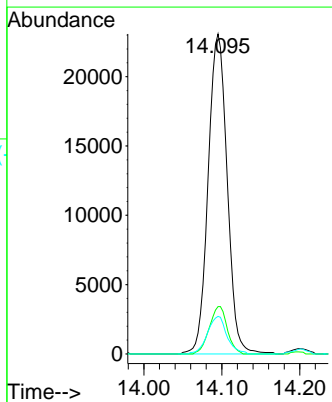


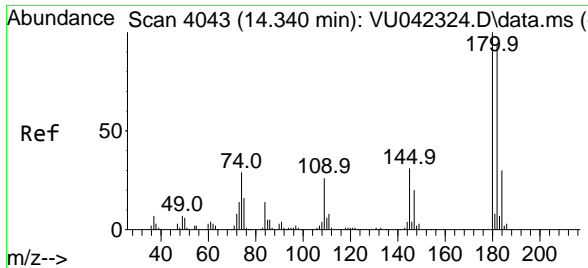
#95
 Naphthalene
 Concen: 8.47 ug/l
 RT: 14.095 min Scan# 3967
 Delta R.T. 0.000 min
 Lab File: VU042375.D
 Acq: 19 Feb 2021 20:31



Tgt Ion:128 Resp: 39254

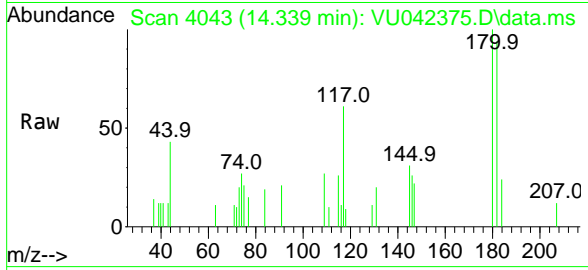
Ion	Ratio	Lower	Upper
128	100		
127	14.0	10.8	16.2
129	12.0	8.6	13.0





#96
 1,2,3-Trichlorobenzene
 Concen: 2.60 ug/l
 RT: 14.339 min Scan# 4043
 Delta R.T. -0.001 min
 Lab File: VU042375.D
 Acq: 19 Feb 2021 20:31

Instrument :
 MSVOA_U
ClientSampled :
 NWB-1579-1582



Tgt Ion:180 Resp: 1840

Ion	Ratio	Lower	Upper
180	100		
182	95.2	48.0	144.0
145	93.0	15.5	46.5#

