

Data Path : Z:\VOASRV\HPCHEM1\MSVOA U\DATA\VU022719\  
 Data File : VU029694.D  
 Acq On : 26 Feb 2019 20:02  
 Operator : JC/SP  
 Sample : K1624-09  
 Misc : 5.0mL/MSVOA U/WATER  
 ALS Vial : 17 Sample Multiplier: 1

Quant Time: Feb 27 03:20:01 2019  
 Quant Method : Z:\VOASRV\HPCHEM1\MSVOA\_U\METHOD\SOMULM021519WMA.M  
 Quant Title : VOC Analysis  
 QLast Update : Wed Feb 27 01:53:00 2019  
 Response via : Initial Calibration

Internal Standards	R.T.	QIon	Response	Conc	Units	Dev(Min)
1) 1,4-Difluorobenzene	5.88	114	459874	50.00	ug/L	0.00
28) Chlorobenzene-d5	9.09	117	443987	50.00	ug/L	0.00
60) 1,4-Dichlorobenzene-d4	11.48	152	221487	50.00	ug/L	0.00

## System Monitoring Compounds

4) Vinyl Chloride-d3	1.40	65	143995	42.73	ug/L	0.00
Spiked Amount	50.000	Range	60 - 135	Recovery	=	85.46%
7) Chloroethane-d5	1.68	69	131816	44.00	ug/L	0.00
Spiked Amount	50.000	Range	70 - 130	Recovery	=	88.00%
11) 1,1-Dichloroethene-d2	2.27	63	215239	32.68	ug/L	0.00
Spiked Amount	50.000	Range	60 - 125	Recovery	=	65.36%
21) 2-Butanone-d5	4.17	46	230596	112.45	ug/L	0.00
Spiked Amount	100.000	Range	40 - 130	Recovery	=	112.45%
24) Chloroform-d	4.65	84	281703	51.54	ug/L	0.00
Spiked Amount	50.000	Range	70 - 125	Recovery	=	103.08%
26) 1,2-Dichloroethane-d4	5.31	65	181954	52.58	ug/L	0.00
Spiked Amount	50.000	Range	70 - 125	Recovery	=	105.16%
32) Benzene-d6	5.34	84	613122	54.88	ug/L	0.00
Spiked Amount	50.000	Range	70 - 125	Recovery	=	109.76%
36) 1,2-Dichloropropane-d6	6.33	67	187947	55.92	ug/L	0.00
Spiked Amount	50.000	Range	70 - 120	Recovery	=	111.84%
41) Toluene-d8	7.56	98	568145	49.83	ug/L	0.00
Spiked Amount	50.000	Range	80 - 120	Recovery	=	99.66%
43) trans-1,3-Dichloropropene-	7.85	79	83847	47.03	ug/L	0.00
Spiked Amount	50.000	Range	60 - 125	Recovery	=	94.06%
47) 2-Hexanone-d5	8.31	63	177283	94.71	ug/L	0.00
Spiked Amount	100.000	Range	45 - 130	Recovery	=	94.71%
57) 1,1,2,2-Tetrachloroethane-	10.43	84	289435	50.96	ug/L	0.00
Spiked Amount	50.000	Range	65 - 120	Recovery	=	101.92%
64) 1,2-Dichlorobenzene-d4	11.86	152	242644	50.84	ug/L	0.00
Spiked Amount	50.000	Range	80 - 120	Recovery	=	101.68%

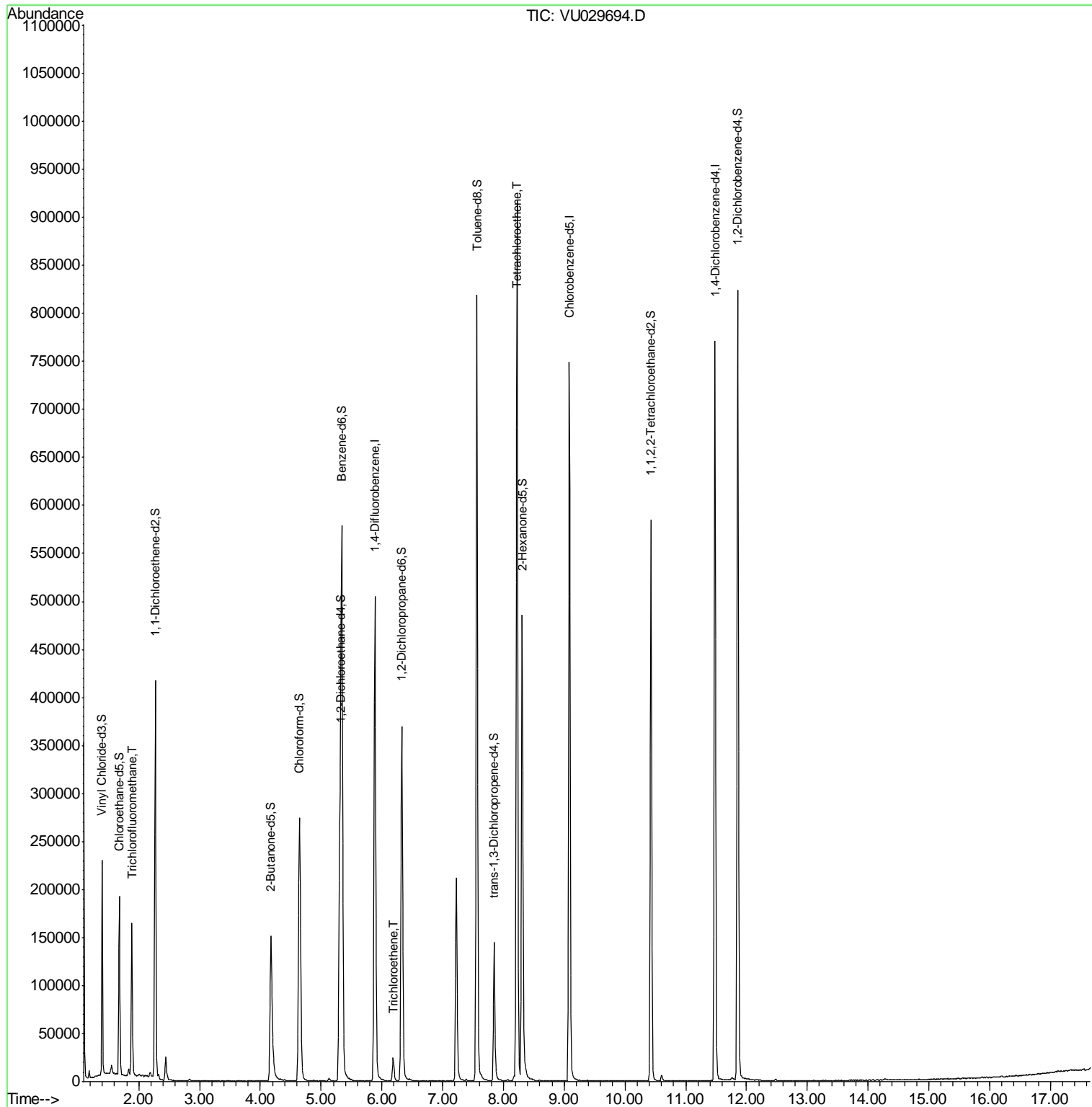
## Target Compounds

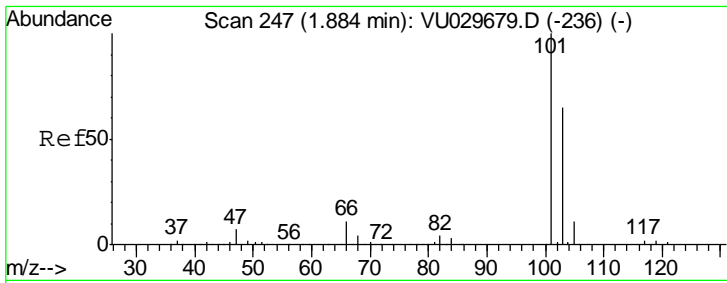
Target Compounds	R.T.	QIon	Response	Conc	Units	Ovalue
9) Trichlorofluoromethane	1.88	101	94453	15.772	ug/L	97
34) Trichloroethene	6.19	95	8367	2.729	ug/L	98
46) Tetrachloroethene	8.22	164	222589	74.161	ug/L	99

(#) = qualifier out of range (m) = manual integration (+) = signals summed

Data Path : Z:\VOASRV\HPCHEM1\MSVOA U\DATA\VU022719\  
 Data File : VU029694.D  
 Acq On : 26 Feb 2019 20:02  
 Operator : JC/SP  
 Sample : K1624-09  
 Misc : 5.0mL/MSVOA U/WATER  
 ALS Vial : 17 Sample Multiplier: 1

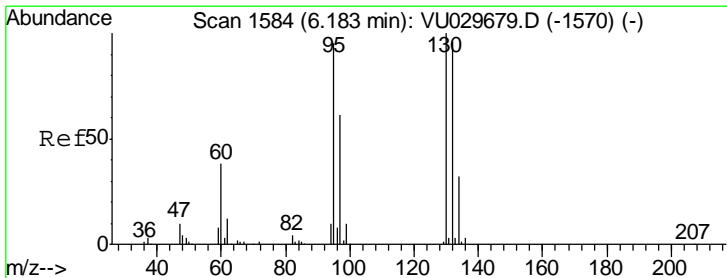
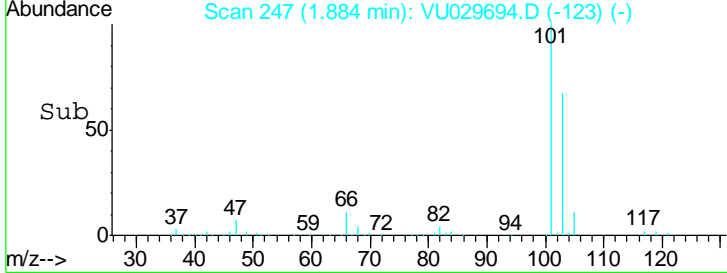
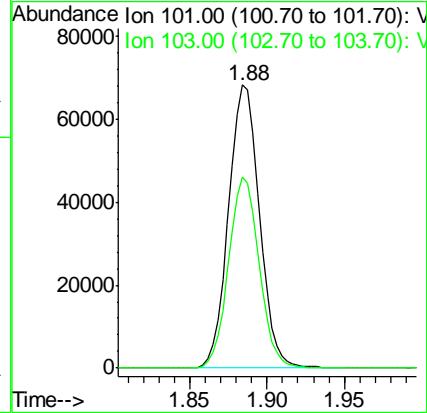
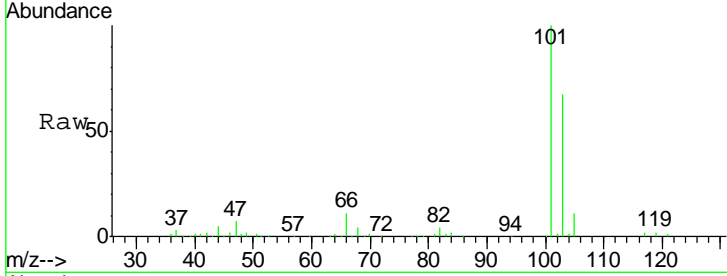
Quant Time: Feb 27 03:20:01 2019  
 Quant Method : Z:\VOASRV\HPCHEM1\MSVOA\_U\METHOD\SOMULM021519WMA.M  
 Quant Title : VOC Analysis  
 QLast Update : Wed Feb 27 01:53:00 2019  
 Response via : Initial Calibration





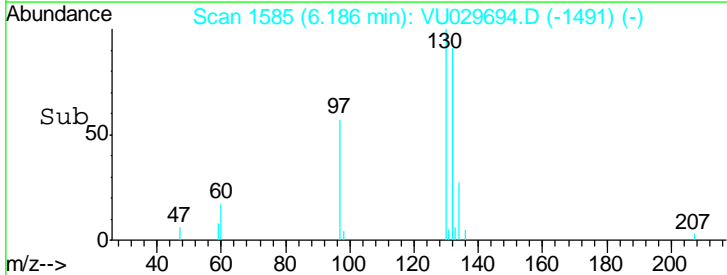
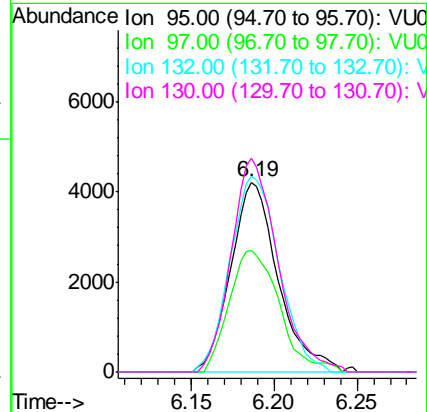
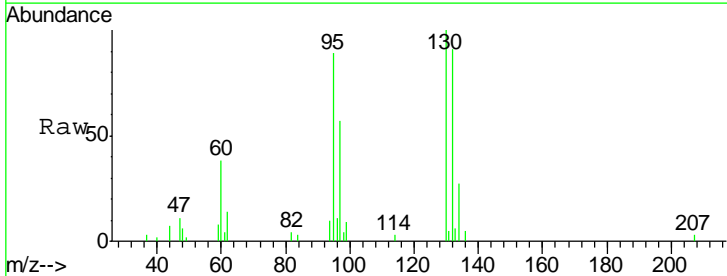
#9  
 Trichlorofluoromethane  
 Concen: 15.772 ug/L  
 RT: 1.88 min Scan# 247  
 Delta R.T. -0.00 min  
 Lab File: VU029694.D  
 Acq: 26 Feb 2019 20:02

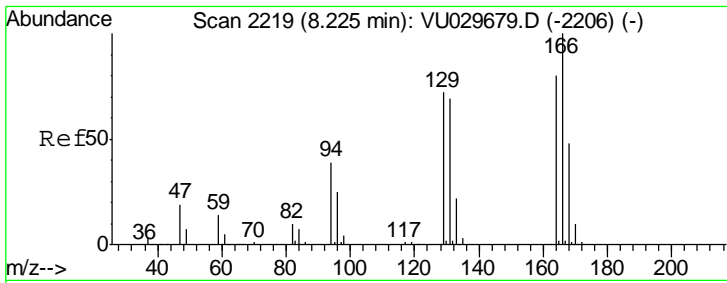
Tgt Ion	Resp	Lower	Upper
101	94453		
103	66.6	51.4	77.2



#34  
 Trichloroethene  
 Concen: 2.729 ug/L  
 RT: 6.19 min Scan# 1585  
 Delta R.T. 0.00 min  
 Lab File: VU029694.D  
 Acq: 26 Feb 2019 20:02

Tgt Ion	Resp	Lower	Upper
95	8367		
97	64.5	44.6	82.8
132	103.1	74.6	138.6
130	112.7	77.2	143.4

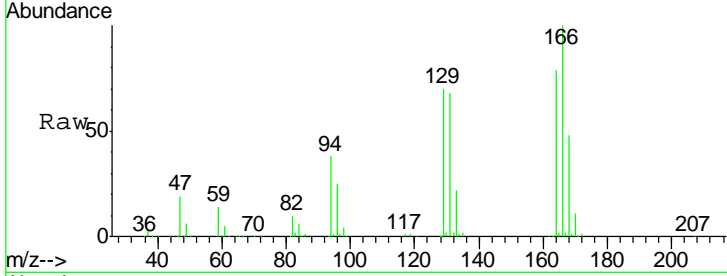




#46  
 Tetrachloroethene  
 Concen: 74.161 ug/L  
 RT: 8.22 min Scan# 2219  
 Delta R.T. -0.00 min  
 Lab File: VU029694.D  
 Acq: 26 Feb 2019 20:02

Tot Ion:164 Resp: 222589

Ion	Ratio	Lower	Upper
164	100		
129	88.8	62.1	115.3
131	86.2	60.1	111.5
166	126.6	89.7	166.5



Abundance Ion 164.00 (163.70 to 164.70): V  
 Ion 129.00 (128.70 to 129.70): V  
 Ion 131.00 (130.70 to 131.70): V  
 Ion 166.00 (165.70 to 166.70): V

