

Data Path : Z:\VOASRV\HPCHEM1\MSVOA\_U\DATA\VU022819\  
 Data File : VU029744.D  
 Acq On : 28 Feb 2019 17:39  
 Operator : JC/SP  
 Sample : K1577-15  
 Misc : 25.0mL/MSVOA\_U/WATER  
 ALS Vial : 22 Sample Multiplier: 1

Instrument :  
 MSVOA\_U  
 ClientSampleID :  
 CWJZ3

Quant Time: Mar 01 01:49:49 2019  
 Quant Method : Z:\VOASRV\HPCHEM1\MSVOA\_U\METHOD\SOMUTR022119WMA.M  
 Quant Title : TRACE VOA SOM01.0  
 QLast Update : Fri Mar 01 00:18:18 2019  
 Response via : Initial Calibration

Internal Standards	R.T.	QIon	Response	Conc	Units	Dev(Min)
1) 1,4-Difluorobenzene	5.88	114	252040	5.00	ug/L	0.00
28) Chlorobenzene-d5	9.09	117	245099	5.00	ug/L	0.00
60) 1,4-Dichlorobenzene-d4	11.48	152	121304	5.00	ug/L	0.00

## System Monitoring Compounds

4) Vinyl Chloride-d3	1.40	65	67947	4.13	ug/L	0.00
Spiked Amount	5.000	Range	40 - 130	Recovery	=	82.60%
7) Chloroethane-d5	1.68	69	66462	4.29	ug/L	0.00
Spiked Amount	5.000	Range	65 - 130	Recovery	=	85.80%
11) 1,1-Dichloroethene-d2	2.27	63	111754	3.16	ug/L	0.00
Spiked Amount	5.000	Range	60 - 125	Recovery	=	63.20%
20) 2-Butanone-d5	4.19	46	213405	57.34	ug/L	0.00
Spiked Amount	50.000	Range	40 - 130	Recovery	=	114.68%
24) Chloroform-d	4.65	84	143703	4.95	ug/L	0.00
Spiked Amount	5.000	Range	70 - 125	Recovery	=	99.00%
26) 1,2-Dichloroethane-d4	5.31	65	78395	5.00	ug/L	0.00
Spiked Amount	5.000	Range	70 - 130	Recovery	=	100.00%
32) Benzene-d6	5.34	84	307212	4.88	ug/L	0.00
Spiked Amount	5.000	Range	70 - 125	Recovery	=	97.60%
36) 1,2-Dichloropropane-d6	6.33	67	96233	5.26	ug/L	0.00
Spiked Amount	5.000	Range	60 - 140	Recovery	=	105.20%
41) Toluene-d8	7.56	98	275591	4.47	ug/L	0.00
Spiked Amount	5.000	Range	70 - 130	Recovery	=	89.40%
43) trans-1,3-Dichloropropene-	7.85	79	34682	4.61	ug/L	0.00
Spiked Amount	5.000	Range	55 - 130	Recovery	=	92.20%
46) 2-Hexanone-d5	8.31	63	203420	55.22	ug/L	0.00
Spiked Amount	50.000	Range	45 - 130	Recovery	=	110.44%
57) 1,1,2,2-Tetrachloroethane-	10.43	84	83127	5.06	ug/L	0.00
Spiked Amount	5.000	Range	65 - 120	Recovery	=	101.20%
64) 1,2-Dichlorobenzene-d4	11.86	152	116498	4.88	ug/L	0.00
Spiked Amount	5.000	Range	80 - 120	Recovery	=	97.60%

## Target Compounds

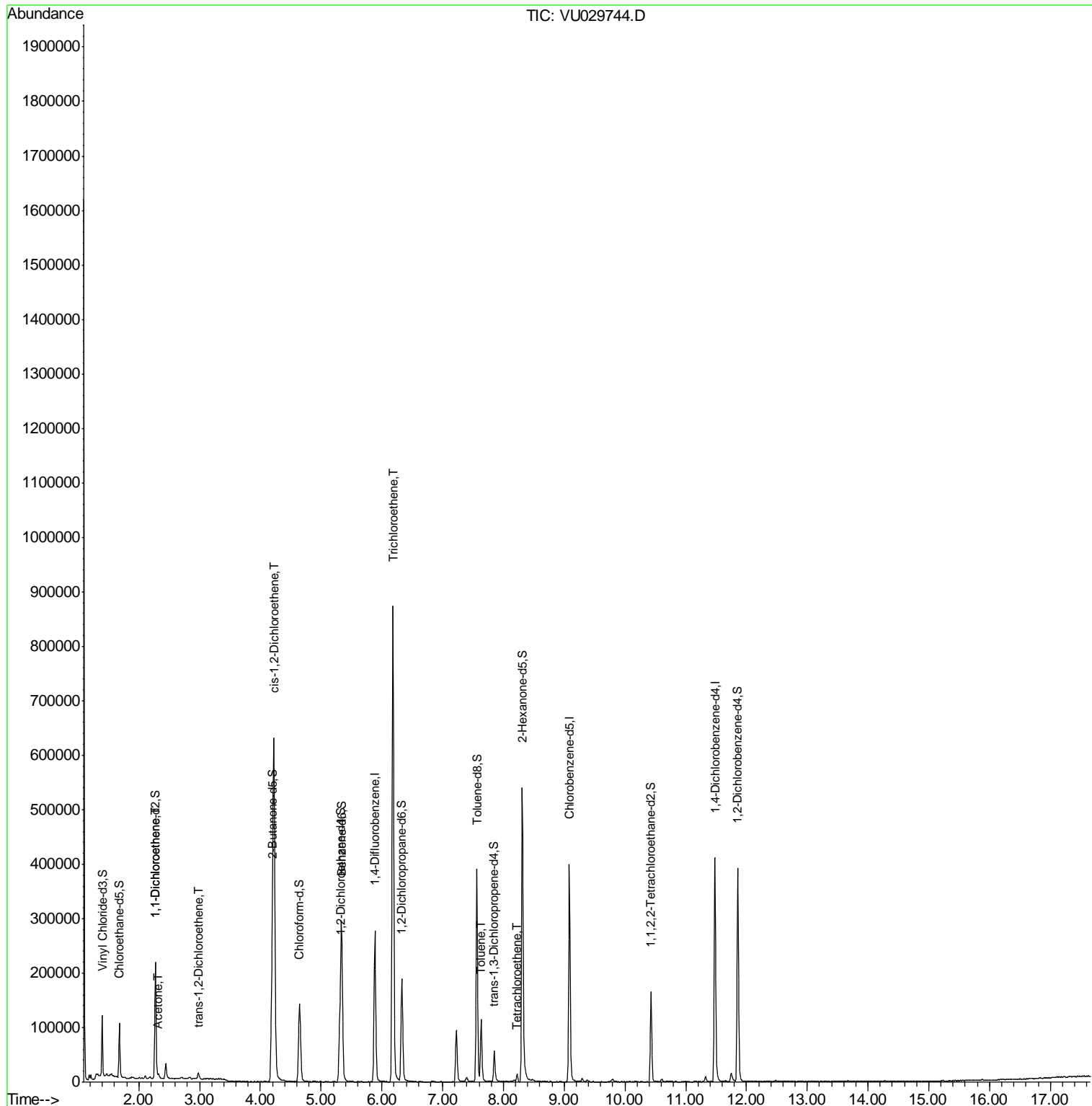
Target Compounds	R.T.	QIon	Response	Conc	Units	Qvalue
12) 1,1-Dichloroethene	2.28	96	7995	0.428	ug/L	# 1
13) Acetone	2.32	43	7872	2.944	ug/L	96
18) trans-1,2-Dichloroethene	2.98	96	4866	0.239	ug/L	96
22) cis-1,2-Dichloroethene	4.22	96	361191	19.383	ug/L	97
34) Trichloroethene	6.18	95	308914	17.084	ug/L	97
42) Toluene	7.63	91	90755	1.235	ug/L	97
47) Tetrachloroethene	8.22	164	3366	0.200	ug/L	88

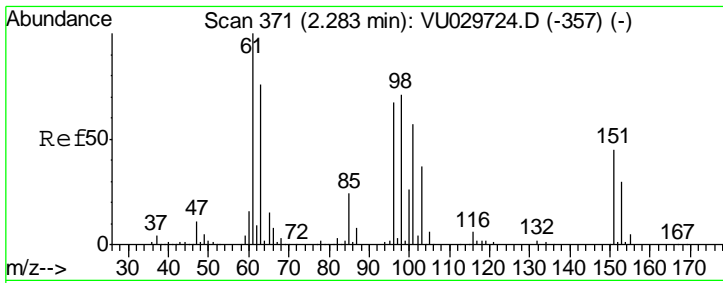
(#) = qualifier out of range (m) = manual integration (+) = signals summed

Data Path : Z:\VOASRV\HPCHEM1\MSVOA\_U\DATA\VU022819\  
 Data File : VU029744.D  
 Acq On : 28 Feb 2019 17:39  
 Operator : JC/SP  
 Sample : K1577-15  
 Misc : 25.0mL/MSVOA\_U/WATER  
 ALS Vial : 22 Sample Multiplier: 1

Instrument :  
 MSVOA\_U  
 ClientSampled :  
 CWJZ3

Quant Time: Mar 01 01:49:49 2019  
 Quant Method : Z:\VOASRV\HPCHEM1\MSVOA\_U\METHOD\SOMUTR022119WMA.M  
 Quant Title : TRACE VOA SOM01.0  
 QLast Update : Fri Mar 01 00:18:18 2019  
 Response via : Initial Calibration

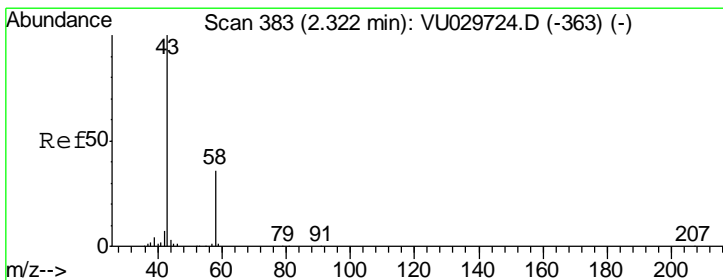
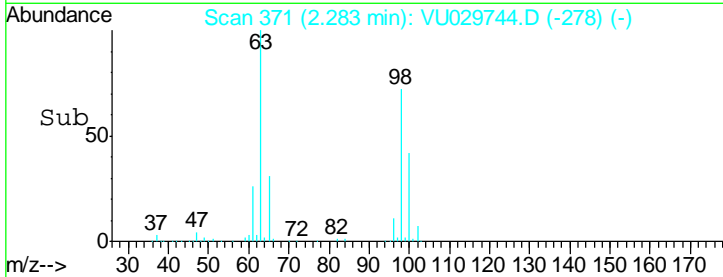
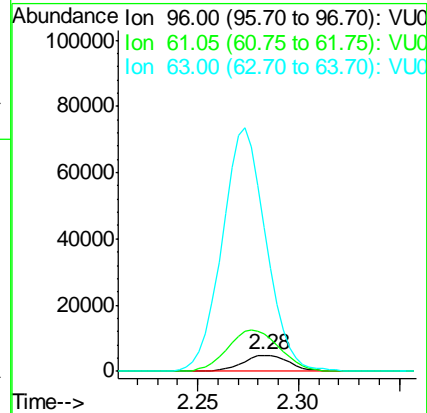
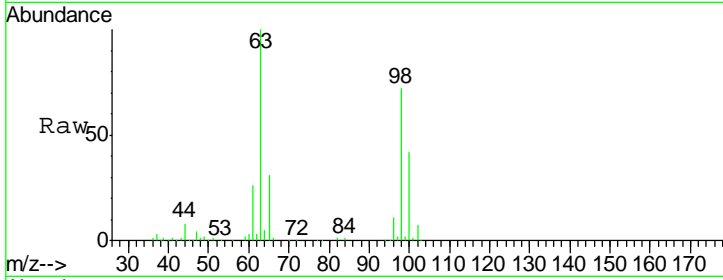




#12  
 1,1-Dichloroethene  
 Concen: 0.428 ug/L  
 RT: 2.28 min Scan# 371  
 Delta R.T. 0.00 min  
 Lab File: VU029744.D  
 Acq: 28 Feb 2019 17:39

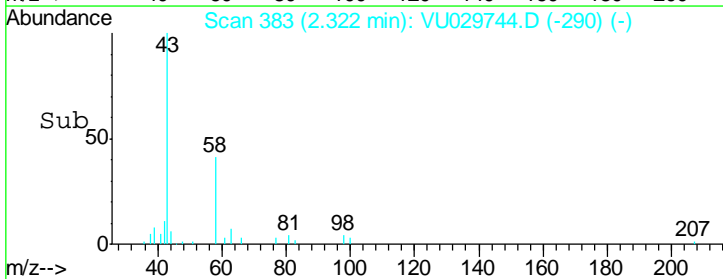
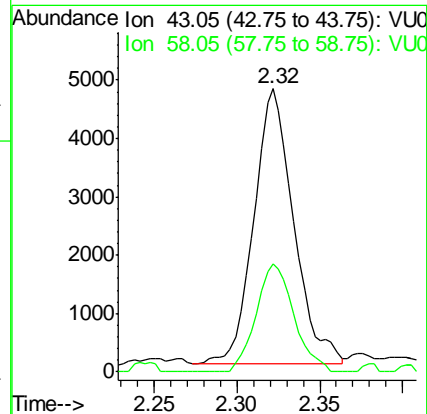
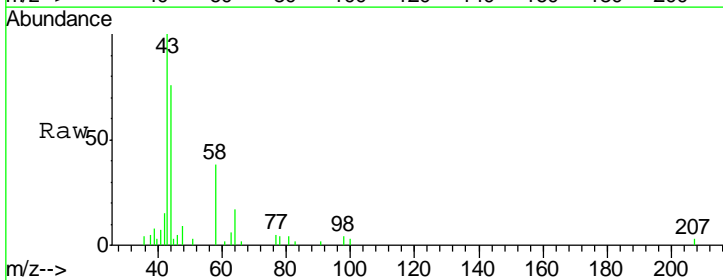
Instrument :  
 MSVOA\_U  
 ClientSampled :  
 CWJZ3

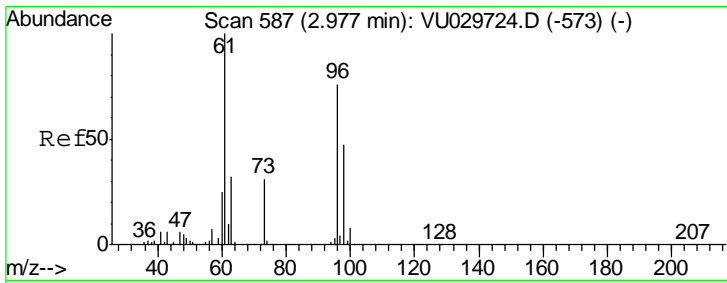
Tgt Ion	Resp	Lower	Upper
96	7995		
61	227.5	111.3	206.7#
63	873.1	88.5	164.3#



#13  
 Acetone  
 Concen: 2.944 ug/L  
 RT: 2.32 min Scan# 383  
 Delta R.T. 0.00 min  
 Lab File: VU029744.D  
 Acq: 28 Feb 2019 17:39

Tgt Ion	Resp	Lower	Upper
43	7872		
58	37.4	0.0	70.2

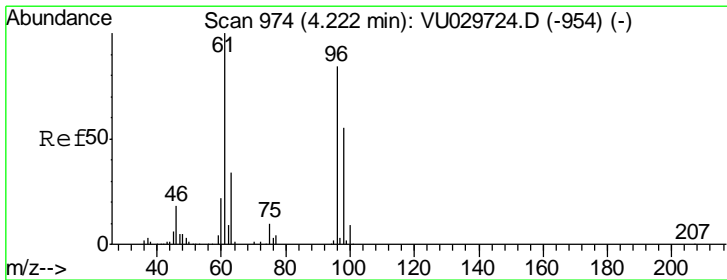
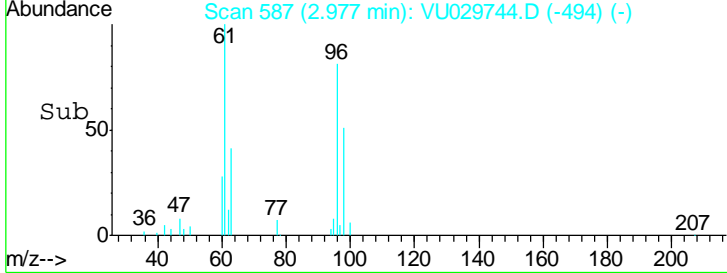
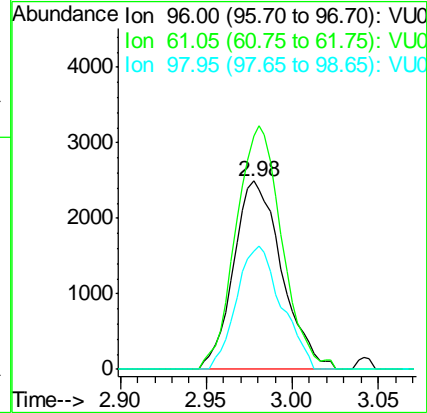
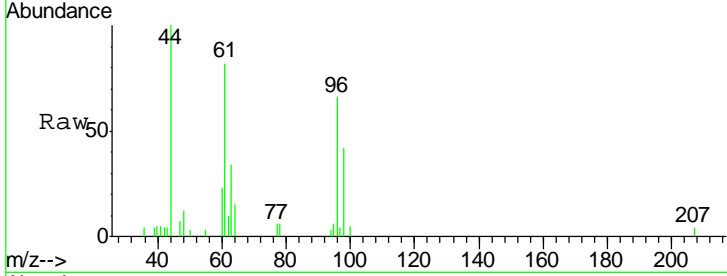




#18  
 trans-1,2-Dichloroethene  
 Concen: 0.239 ug/L  
 RT: 2.98 min Scan# 587  
 Delta R.T. 0.00 min  
 Lab File: VU029744.D  
 Acq: 28 Feb 2019 17:39

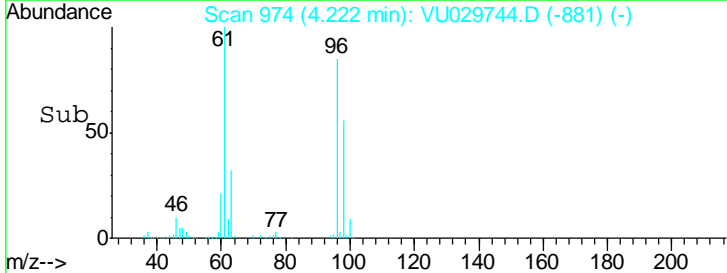
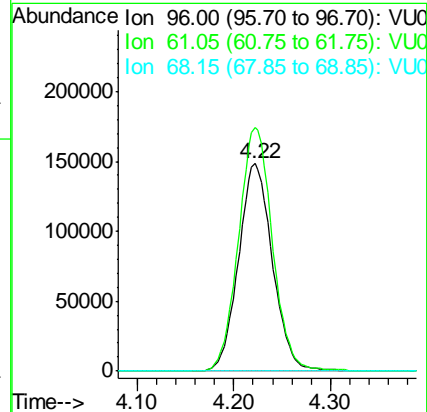
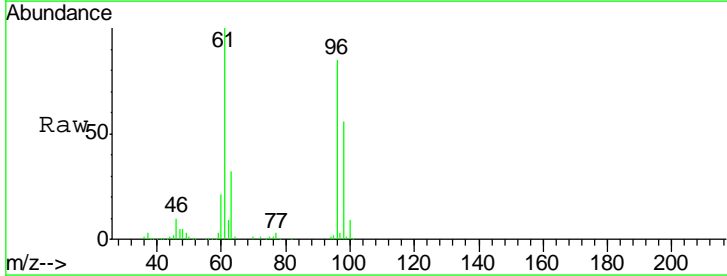
Instrument :  
 MSVOA\_U  
 ClientSampled :  
 CWJZ3

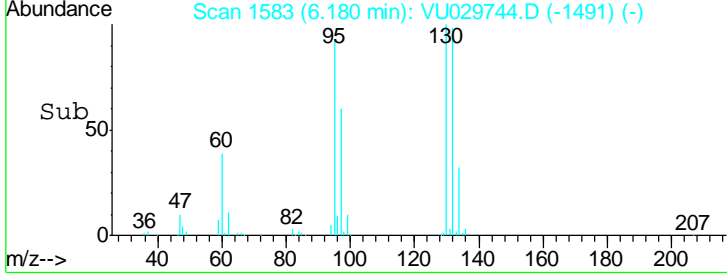
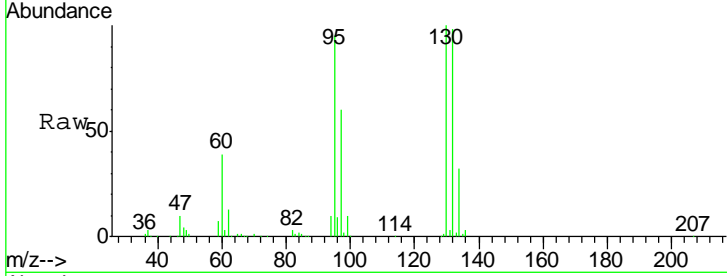
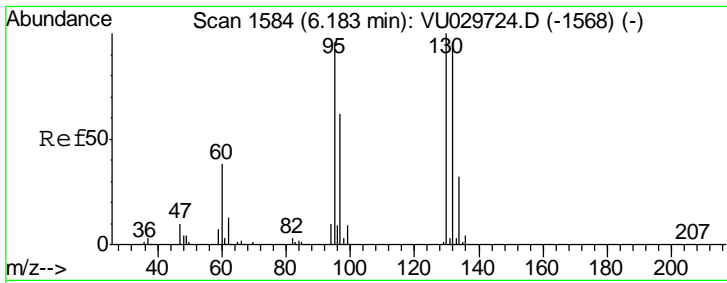
Tgt Ion	Resp	Lower	Upper
96	4866		
Ion Ratio			
96	100		
61	123.7	90.3	167.7
98	62.9	45.2	84.0



#22  
 cis-1,2-Dichloroethene  
 Concen: 19.383 ug/L  
 RT: 4.22 min Scan# 974  
 Delta R.T. 0.00 min  
 Lab File: VU029744.D  
 Acq: 28 Feb 2019 17:39

Tgt Ion	Resp	Lower	Upper
96	361191		
Ion Ratio			
96	100		
61	117.3	80.2	149.0
68	0.0	0.0	0.0



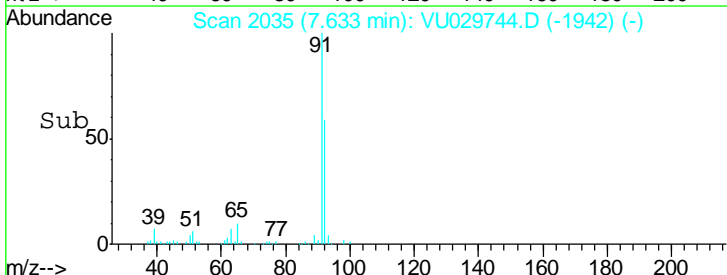
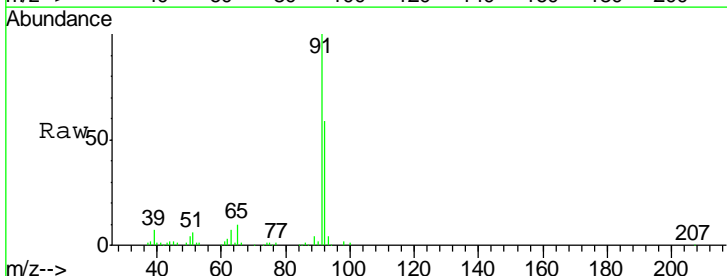
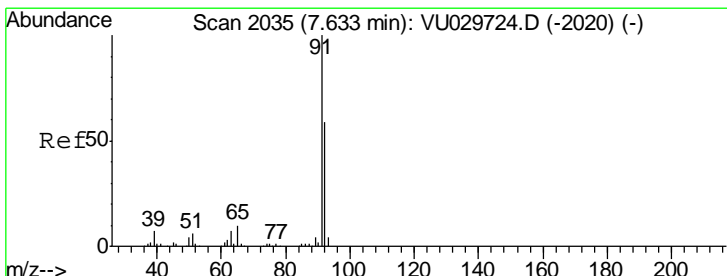
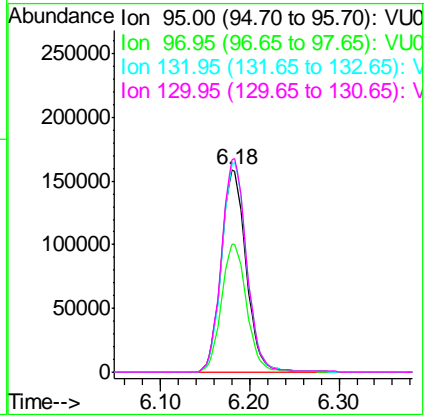


#34  
 Trichloroethene  
 Concen: 17.084 ug/L  
 RT: 6.18 min Scan# 1583  
 Delta R.T. -0.00 min  
 Lab File: VU029744.D  
 Acq: 28 Feb 2019 17:39

Instrument :  
 MSVOA\_U  
 ClientSampled :  
 CWJZ3

Tgt Ion: 95 Resp: 308914

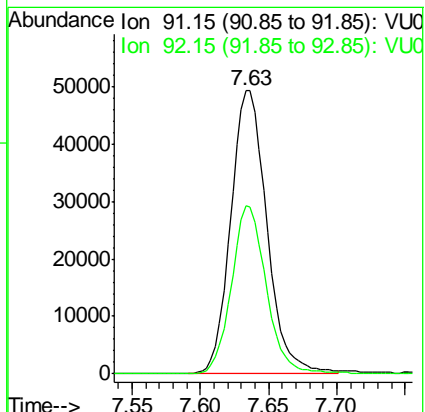
Ion	Ratio	Lower	Upper
95	100		
97	63.1	45.6	84.8
132	102.5	72.9	135.3
130	104.8	77.5	143.9

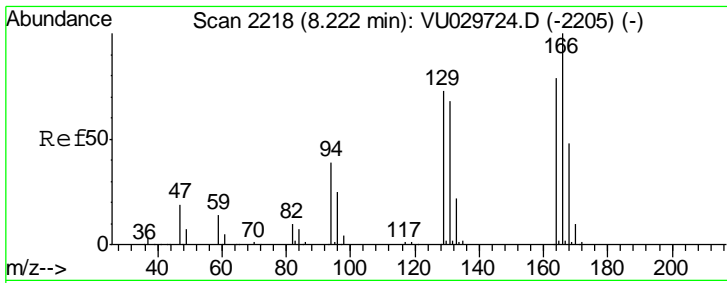


#42  
 Toluene  
 Concen: 1.235 ug/L  
 RT: 7.63 min Scan# 2035  
 Delta R.T. 0.00 min  
 Lab File: VU029744.D  
 Acq: 28 Feb 2019 17:39

Tgt Ion: 91 Resp: 90755

Ion	Ratio	Lower	Upper
91	100		
92	59.5	40.1	74.5

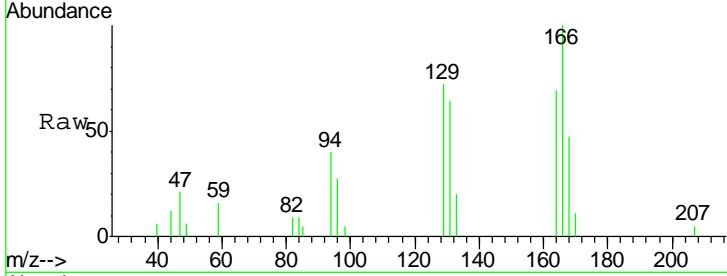




#47

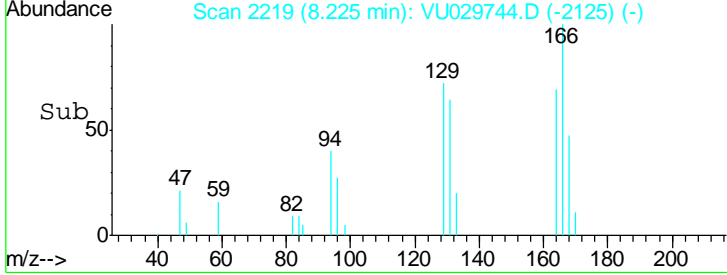
Tetrachloroethene  
 Concen: 0.200 ug/L  
 RT: 8.22 min Scan# 2219  
 Delta R.T. 0.00 min  
 Lab File: VU029744.D  
 Acq: 28 Feb 2019 17:39

Instrument : MSVOA\_U  
 ClientSampled : CWJZ3



Tgt Ion:164 Resp: 3366

Ion	Ratio	Lower	Upper
164	100		
129	103.9	62.9	116.7
131	92.5	61.8	114.8
166	144.0	88.8	164.8



Abundance Ion 163.90 (163.60 to 164.60): V

Ion 128.95 (128.65 to 129.65): V

Ion 130.95 (130.65 to 131.65): V

Ion 165.90 (165.60 to 166.60): V

