

Data Path : Z:\VOASRV\HPCHEM1\MSVOA U\DATA\VU022819\
 Data File : VU029735.D
 Acq On : 28 Feb 2019 14:05
 Operator : JC/SP
 Sample : K1577-06
 Misc : 25.0mL/MSVOA U/WATER
 ALS Vial : 13 Sample Multiplier: 1

Instrument :
 MSVOA_U
 ClientSampleId :
 CWJX1

Integration Parameters: rteint.p
 Integrator: RTE
 Smoothing : ON Filtering: 5
 Sampling : 1 Min Area: 3 % of largest Peak
 Start Thrs: 0.1 Max Peaks: 100
 Stop Thrs : 0 Peak Location: TOP

If leading or trailing edge < 100 prefer < Baseline drop else tangent >
 Peak separation: 5

Method : Z:\VOASRV\HPCHEM1\MSVOA_U\METHOD\SOMUTR022119WMA.M
 Title : TRACE VOA SOM01.0

Signal : TIC

peak #	R.T. min	first scan	max scan	last scan	PK TY	peak height	corr. area	corr. % max.	% of total
1	1.396	88	95	105	rBV	107571	113003	12.30%	1.557%
2	1.682	174	184	196	rBV	97883	122051	13.29%	1.682%
3	2.273	357	368	379	rBV	200544	308123	33.55%	4.246%
4	2.447	411	422	434	rBV	34176	62087	6.76%	0.856%
5	4.190	950	964	997	rBV	127469	363409	39.57%	5.008%
6	4.646	1089	1106	1132	rBV2	131592	337674	36.76%	4.653%
7	5.334	1298	1320	1348	rBV2	294993	813400	88.56%	11.209%
8	5.884	1477	1491	1514	rBV	283187	561654	61.15%	7.740%
9	6.328	1615	1629	1651	rBV	186460	374069	40.73%	5.155%
10	7.228	1894	1909	1935	rBV	93707	174743	19.03%	2.408%
11	7.395	1948	1961	1980	rVB2	12666	25689	2.80%	0.354%
12	7.563	1997	2013	2029	rBV	386372	682501	74.31%	9.405%
13	7.849	2090	2102	2126	rBV2	54286	99797	10.87%	1.375%
14	8.312	2234	2246	2285	rBV	505200	918474	100.00%	12.657%
15	9.087	2475	2487	2513	rBV	409982	692218	75.37%	9.539%
16	10.431	2890	2905	2919	rBV	153998	253094	27.56%	3.488%
17	11.482	3219	3232	3259	rBV	412827	705682	76.83%	9.724%
18	11.858	3336	3349	3371	rBV	387557	649117	70.67%	8.945%

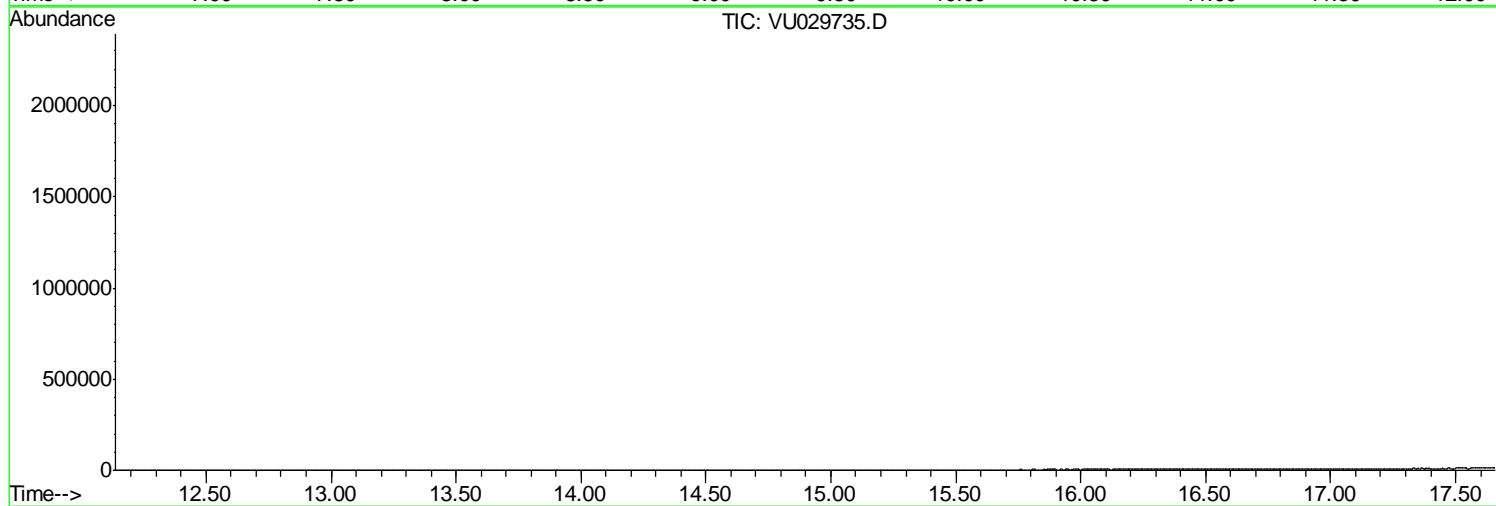
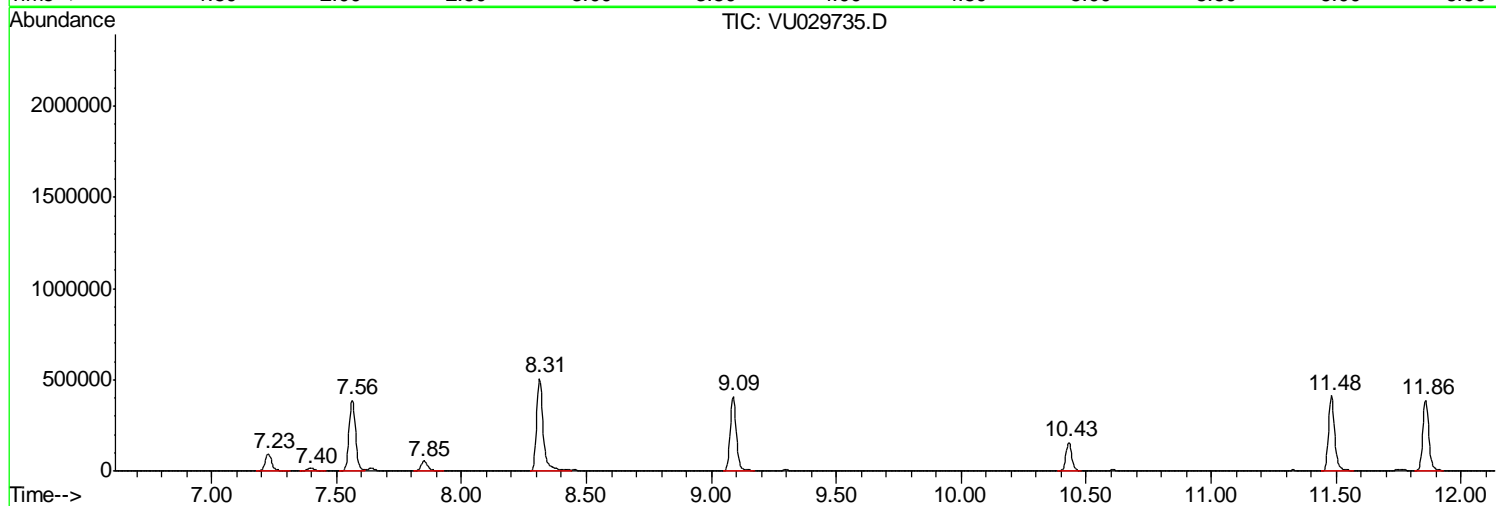
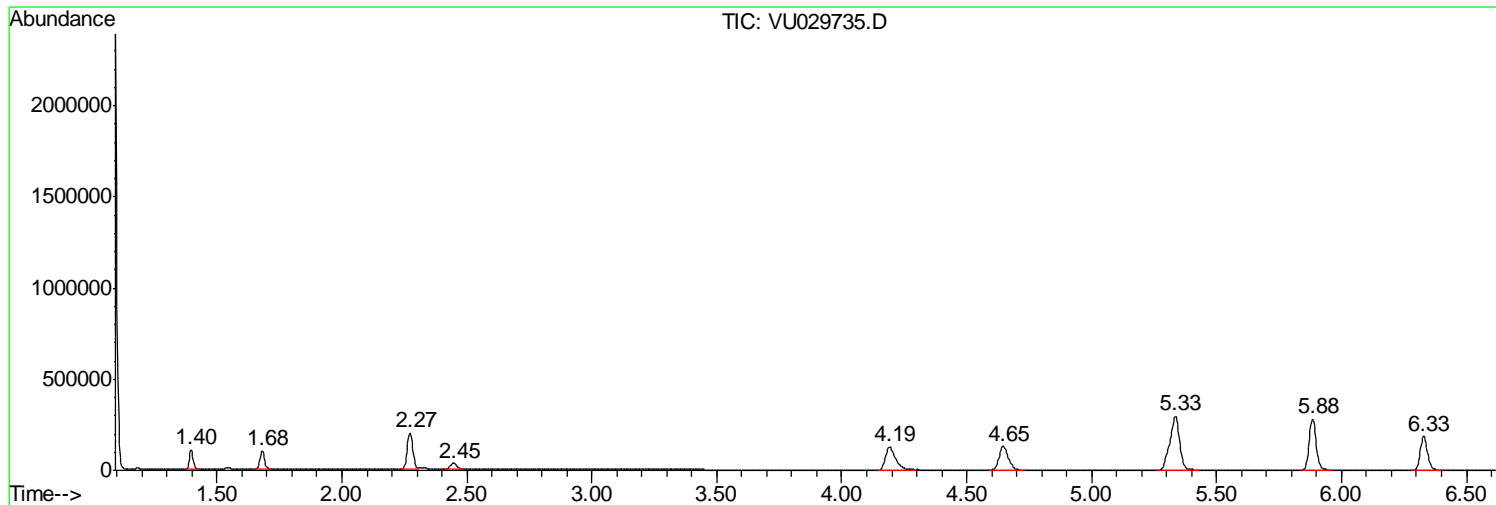
Sum of corrected areas: 7256785

Data Path : Z:\VOASRV\HPCHEM1\MSVOA U\DATA\VU022819\
Data File : VU029735.D
Acq On : 28 Feb 2019 14:05
Operator : JC/SP
Sample : K1577-06
Misc : 25.0mL/MSVOA U/WATER
ALS Vial : 13 Sample Multiplier: 1

Instrument :
MSVOA_U
ClientSampleId :
CWJX1

Quant Method : Z:\VOASRV\HPCHEM1\MSVOA_U\METHOD\SOMUTR022119WMA.M
Quant Title : TRACE VOA SOM01.0

TIC Library : C:\DATABASE\NIST11.L
TIC Integration Parameters: LSCINT.P



Data Path : Z:\VOASRV\HPCHEM1\MSVOA U\DATA\VU022819\
 Data File : VU029735.D
 Acq On : 28 Feb 2019 14:05
 Operator : JC/SP
 Sample : K1577-06
 Misc : 25.0mL/MSVOA U/WATER
 ALS Vial : 13 Sample Multiplier: 1

Instrument :
 MSVOA_U
 ClientSampled :
 CWJX1

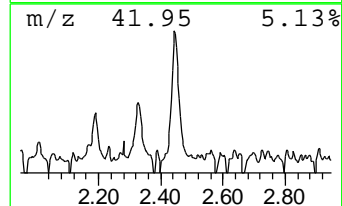
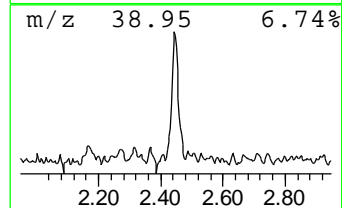
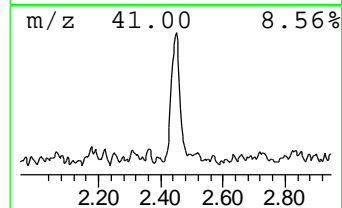
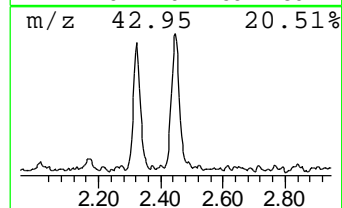
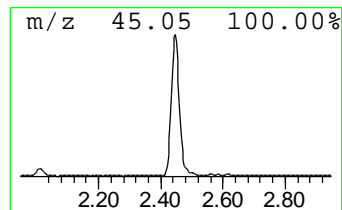
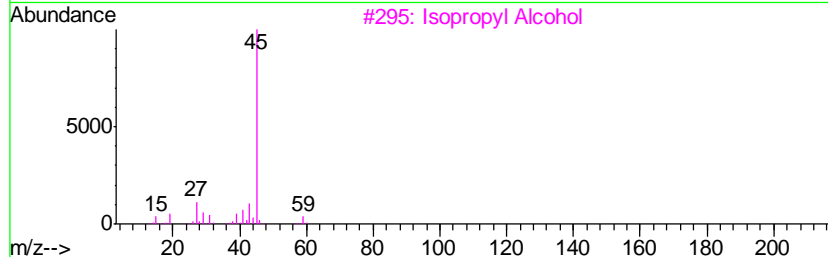
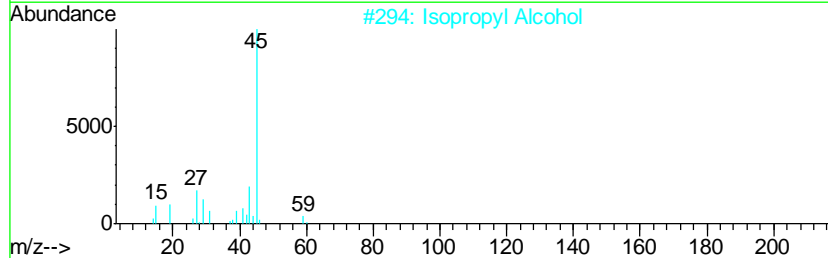
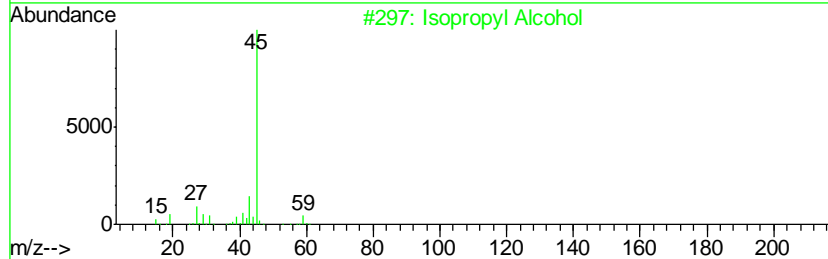
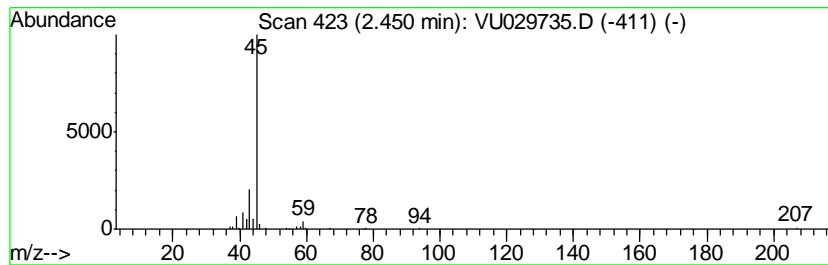
Quant Method : Z:\VOASRV\HPCHEM1\MSVOA_U\METHOD\SOMUTR022119WMA.M
 Quant Title : TRACE VOA SOM01.0

TIC Library : C:\DATABASE\NIST11.L
 TIC Integration Parameters: LSCINT.P

 Peak Number 1 Isopropyl Alcohol Concentration Rank 2

R.T.	EstConc	Area	Relative to ISTD	R.T.
2.45	0.55 ug/L	62087	1,4-Difluorobenzene	5.88

Hit#	of	Tentative ID	MW	MolForm	CAS#	Qual
1	5	Isopropyl Alcohol	60	C3H8O	000067-63-0	86
2		Isopropyl Alcohol	60	C3H8O	000067-63-0	78
3		Isopropyl Alcohol	60	C3H8O	000067-63-0	78
4		Isopropyl Alcohol	60	C3H8O	000067-63-0	72
5		2-Pentanol	88	C5H12O	006032-29-7	56



Data Path : Z:\VOASRV\HPCHEM1\MSVOA_U\DATA\VU022819\
Data File : VU029735.D
Acq On : 28 Feb 2019 14:05
Operator : JC/SP
Sample : K1577-06
Misc : 25.0mL/MSVOA_U/WATER
ALS Vial : 13 Sample Multiplier: 1

Instrument :
MSVOA_U
ClientSampleId :
CWJX1

Quant Method : Z:\VOASRV\HPCHEM1\MSVOA_U\METHOD\SOMUTR022119WMA.M
Quant Title : TRACE VOA SOM01.0

TIC Library : C:\DATABASE\NIST11.L
TIC Integration Parameters: LSCINT.P

TIC Top Hit name	RT	EstConc	Units	Response	--Internal Standard--			
					#	RT	Resp	Conc
Isopropyl Alcohol	2.45	0.6	ug/L	62087	1	5.88	561654	5.0