

Data Path : Z:\VOASRV\HPCHEM1\MSVOA U\DATA\VU030119\  
 Data File : VU029757.D  
 Acq On : 01 Mar 2019 12:33  
 Operator : JC/SP  
 Sample : K1660-12  
 Misc : 25.0mL/MSVOA U/WATER  
 ALS Vial : 9 Sample Multiplier: 1

Instrument :  
 MSVOA\_U  
 ClientSampleId :  
 CWK10

Quant Time: Mar 04 11:42:45 2019  
 Quant Method : Z:\VOASRV\HPCHEM1\MSVOA\_U\METHOD\SOMUTR022119WMA.M  
 Quant Title : TRACE VOA SOM01.0  
 QLast Update : Fri Mar 01 22:12:01 2019  
 Response via : Initial Calibration

Internal Standards	R.T.	QIon	Response	Conc	Units	Dev(Min)
1) 1,4-Difluorobenzene	5.88	114	235651	5.00	ug/L	0.00
28) Chlorobenzene-d5	9.09	117	228754	5.00	ug/L	0.00
60) 1,4-Dichlorobenzene-d4	11.48	152	112456	5.00	ug/L	0.00

System Monitoring Compounds

4) Vinyl Chloride-d3	1.40	65	59452	3.86	ug/L	0.00
Spiked Amount	5.000	Range	40 - 130	Recovery	=	77.20%
7) Chloroethane-d5	1.68	69	62758	4.33	ug/L	0.00
Spiked Amount	5.000	Range	65 - 130	Recovery	=	86.60%
11) 1,1-Dichloroethene-d2	2.27	63	95238	2.88	ug/L	0.00
Spiked Amount	5.000	Range	60 - 125	Recovery	=	57.60%#
20) 2-Butanone-d5	4.19	46	231976	66.67	ug/L	0.00
Spiked Amount	50.000	Range	40 - 130	Recovery	=	133.34%#
24) Chloroform-d	4.65	84	133568	4.92	ug/L	0.00
Spiked Amount	5.000	Range	70 - 125	Recovery	=	98.40%
26) 1,2-Dichloroethane-d4	5.31	65	77688	5.30	ug/L	0.00
Spiked Amount	5.000	Range	70 - 130	Recovery	=	106.00%
32) Benzene-d6	5.34	84	294475	5.02	ug/L	0.00
Spiked Amount	5.000	Range	70 - 125	Recovery	=	100.40%
36) 1,2-Dichloropropane-d6	6.33	67	94787	5.55	ug/L	0.00
Spiked Amount	5.000	Range	60 - 140	Recovery	=	111.00%
41) Toluene-d8	7.56	98	255796	4.45	ug/L	0.00
Spiked Amount	5.000	Range	70 - 130	Recovery	=	89.00%
43) trans-1,3-Dichloropropene-	7.85	79	35134	5.01	ug/L	0.00
Spiked Amount	5.000	Range	55 - 130	Recovery	=	100.20%
46) 2-Hexanone-d5	8.31	63	220032	64.00	ug/L	0.00
Spiked Amount	50.000	Range	45 - 130	Recovery	=	128.00%
57) 1,1,2,2-Tetrachloroethane-	10.43	84	87163	5.68	ug/L	0.00
Spiked Amount	5.000	Range	65 - 120	Recovery	=	113.60%
64) 1,2-Dichlorobenzene-d4	11.86	152	116613	5.27	ug/L	0.00
Spiked Amount	5.000	Range	80 - 120	Recovery	=	105.40%

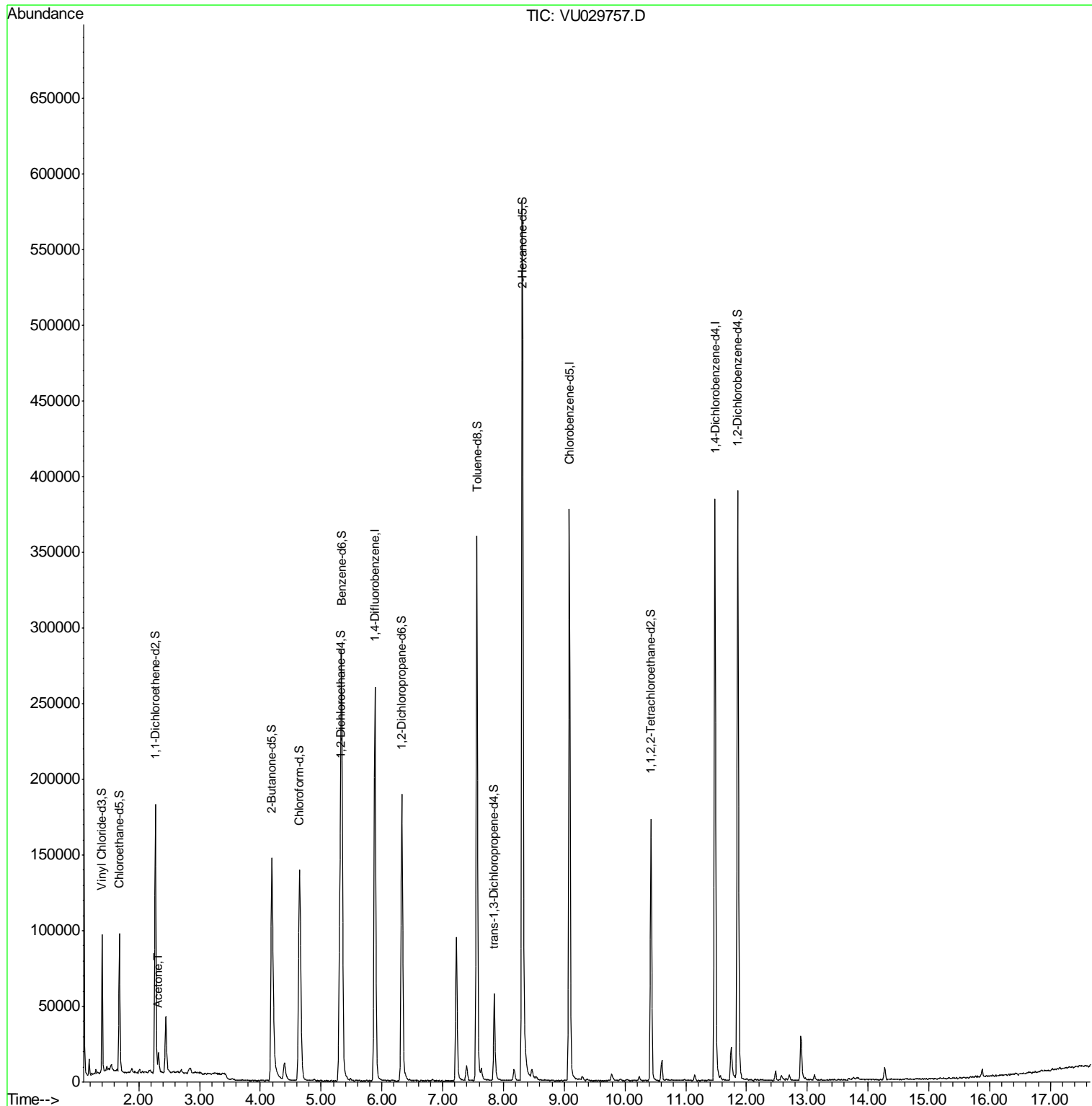
Target Compounds					Ovalue
13) Acetone	2.32	43	12039	4.816 ug/L	98

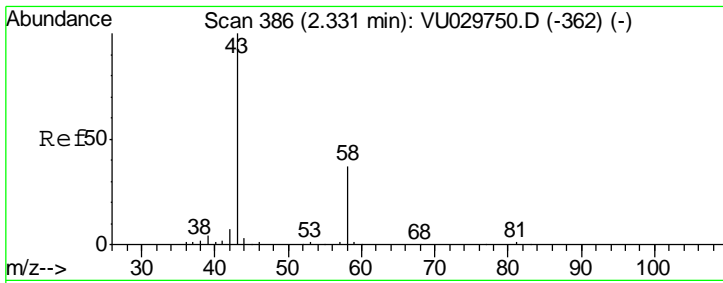
(#) = qualifier out of range (m) = manual integration (+) = signals summed

Data Path : Z:\VOASRV\HPCHEM1\MSVOA U\DATA\VU030119\  
 Data File : VU029757.D  
 Acq On : 01 Mar 2019 12:33  
 Operator : JC/SP  
 Sample : K1660-12  
 Misc : 25.0mL/MSVOA U/WATER  
 ALS Vial : 9 Sample Multiplier: 1

Instrument :  
 MSVOA\_U  
 ClientSampled :  
 CWK10

Quant Time: Mar 04 11:42:45 2019  
 Quant Method : Z:\VOASRV\HPCHEM1\MSVOA\_U\METHOD\SOMUTR022119WMA.M  
 Quant Title : TRACE VOA SOM01.0  
 QLast Update : Fri Mar 01 22:12:01 2019  
 Response via : Initial Calibration





#13  
 Acetone  
 Concen: 4.816 ug/L  
 RT: 2.32 min Scan# 383  
 Delta R.T. -0.01 min  
 Lab File: VU029757.D  
 Acq: 01 Mar 2019 12:33

**Instrument :**  
 MSVOA\_U  
**ClientSampled :**  
 CWK10

Tot Ion: 43 Resp: 12039

Ion	Ratio	Lower	Upper
43	100		
58	36.1	0.0	70.2

