

Data Path : Z:\voasrv\HPCHEM1\MSVOA_U\Data\VU030223\
 Data File : VU053182.D
 Acq On : 02 Mar 2023 13:02
 Operator : JC/MD
 Sample : 01745-05DL 500X
 Misc : 5.0mL/MSVOA_U/WATER
 ALS Vial : 10 Sample Multiplier: 1

Instrument :
 MSVOA_U
 ClientSampleId :
 C0LF2DL

Quant Time: Mar 03 01:46:24 2023
 Quant Method : Z:\voasrv\HPCHEM1\MSVOA_U\Method\SFAMULM021423WMA.M
 Quant Title : VOC Analysis
 QLast Update : Fri Mar 03 01:44:16 2023
 Response via : Initial Calibration

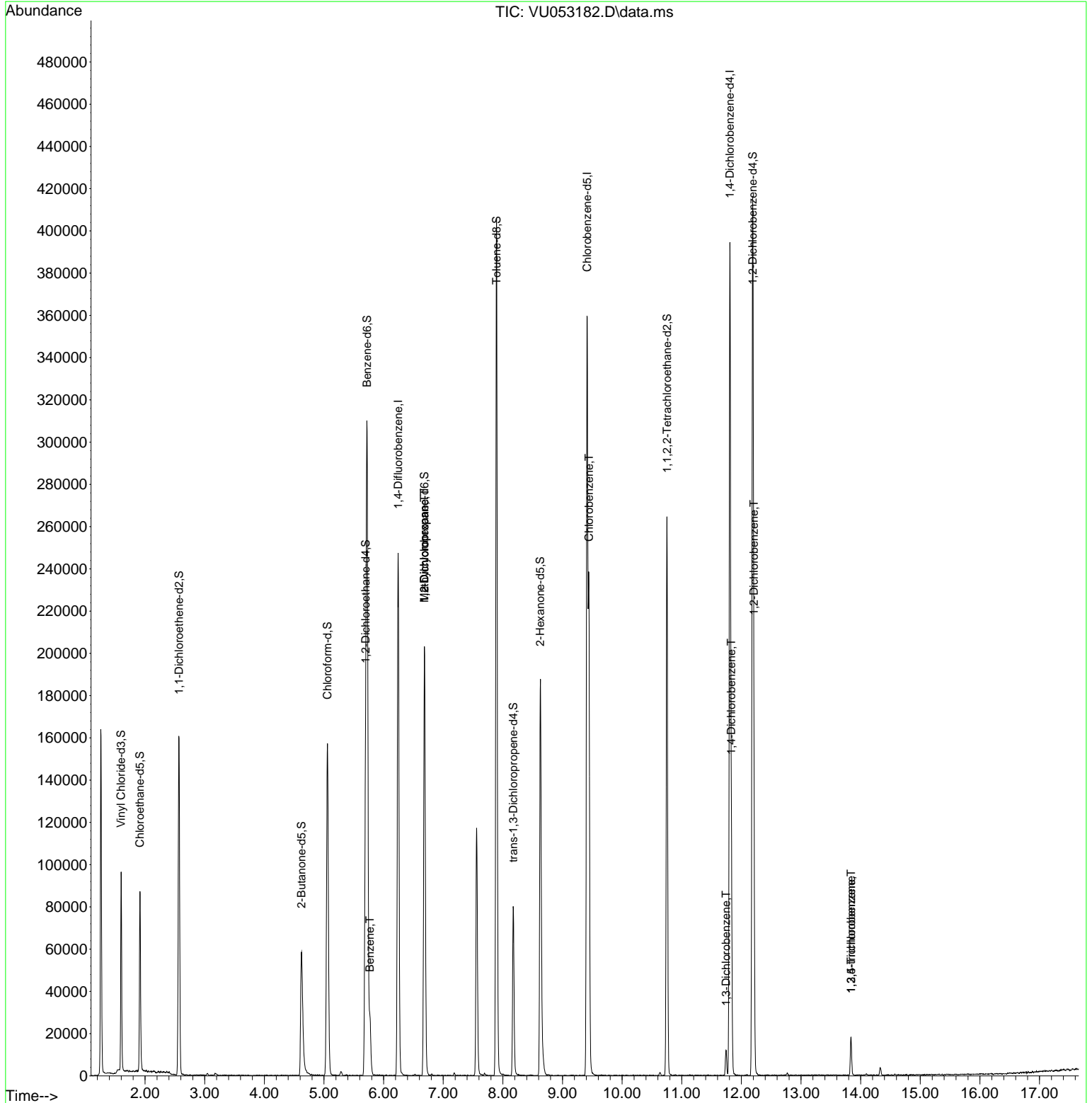
Compound	R.T.	QIon	Response	Conc	Units	Dev(Min)
Internal Standards						
1) 1,4-Difluorobenzene	6.244	114	201127	50.000	ug/L	0.00
28) Chlorobenzene-d5	9.411	117	190132	50.000	ug/L	0.00
58) 1,4-Dichlorobenzene-d4	11.807	152	94046	50.000	ug/L	0.00
System Monitoring Compounds						
4) Vinyl Chloride-d3	1.598	65	65356	35.373	ug/L	0.00
Spiked Amount	50.000	Range 60 - 135	Recovery =	70.740%		
7) Chloroethane-d5	1.913	69	61662	39.433	ug/L	0.00
Spiked Amount	50.000	Range 70 - 130	Recovery =	78.860%		
11) 1,1-Dichloroethene-d2	2.569	63	95572	30.157	ug/L	0.00
Spiked Amount	50.000	Range 60 - 125	Recovery =	60.320%		
21) 2-Butanone-d5	4.624	46	90214	93.426	ug/L	0.00
Spiked Amount	100.000	Range 40 - 130	Recovery =	93.430%		
24) Chloroform-d	5.058	84	139243	42.722	ug/L	0.00
Spiked Amount	50.000	Range 70 - 125	Recovery =	85.440%		
26) 1,2-Dichloroethane-d4	5.698	65	92730	44.740	ug/L	0.00
Spiked Amount	50.000	Range 70 - 125	Recovery =	89.480%		
32) Benzene-d6	5.723	84	290541	42.835	ug/L	0.00
Spiked Amount	50.000	Range 70 - 125	Recovery =	85.680%		
36) 1,2-Dichloropropane-d6	6.685	67	98063	44.256	ug/L	0.00
Spiked Amount	50.000	Range 70 - 120	Recovery =	88.520%		
41) Toluene-d8	7.894	98	275604	43.884	ug/L	0.00
Spiked Amount	50.000	Range 80 - 120	Recovery =	87.760%		
43) trans-1,3-Dichloroprop...	8.173	79	46341	41.063	ug/L	0.00
Spiked Amount	50.000	Range 60 - 125	Recovery =	82.120%		
47) 2-Hexanone-d5	8.627	63	68926	90.048	ug/L	0.00
Spiked Amount	100.000	Range 45 - 130	Recovery =	90.050%		
56) 1,1,2,2-Tetrachloroeth...	10.752	84	131855	44.710	ug/L	0.00
Spiked Amount	50.000	Range 65 - 120	Recovery =	89.420%		
66) 1,2-Dichlorobenzene-d4	12.189	152	93066	44.514	ug/L	0.00
Spiked Amount	50.000	Range 80 - 120	Recovery =	89.020%		
Target Compounds						
33) Benzene	5.772	78	25773	3.854	ug/L	100
35) Methylcyclohexane	6.685	83	22307	7.421	ug/L #	21
37) 1,2-Dichloropropane	6.685	63	10633	5.765	ug/L #	90
51) Chlorobenzene	9.443	112	119887	27.203	ug/L	100
64) 1,3-Dichlorobenzene	11.742	146	4858	1.580	ug/L	96
65) 1,4-Dichlorobenzene	11.832	146	40545	12.998	ug/L	99
67) 1,2-Dichlorobenzene	12.209	146	49370	15.887	ug/L	99
69) 1,3,5-Trichlorobenzene	13.839	180	5722	2.745	ug/L	93
70) 1,2,4-trichlorobenzene	13.839	180	5722	2.901	ug/L	93

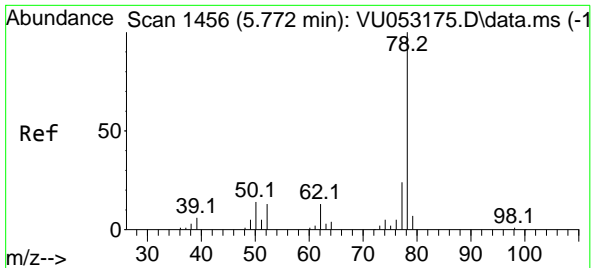
(#) = qualifier out of range (m) = manual integration (+) = signals summed

Data Path : Z:\voasrv\HPCHEM1\MSVOA_U\Data\VU030223\
 Data File : VU053182.D
 Acq On : 02 Mar 2023 13:02
 Operator : JC/MD
 Sample : 01745-05DL 500X
 Misc : 5.0mL/MSVOA_U/WATER
 ALS Vial : 10 Sample Multiplier: 1

Instrument :
 MSVOA_U
 ClientSampleId :
 C0LF2DL

Quant Time: Mar 03 01:46:24 2023
 Quant Method : Z:\voasrv\HPCHEM1\MSVOA_U\Method\SFAMULM021423WMA.M
 Quant Title : VOC Analysis
 QLast Update : Fri Mar 03 01:44:16 2023
 Response via : Initial Calibration

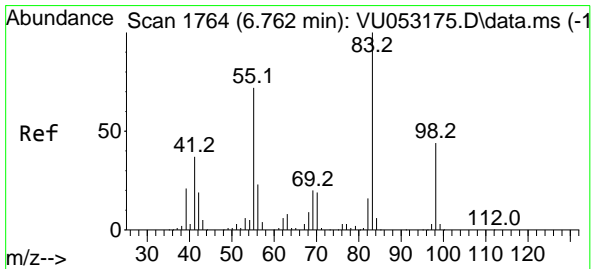
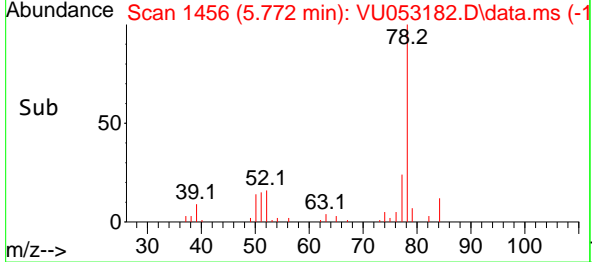
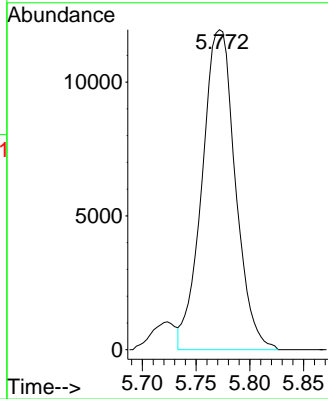
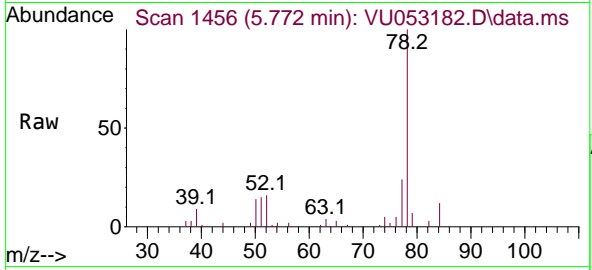




#33
Benzene
Concen: 3.854 ug/L
RT: 5.772 min Scan# 1456
Delta R.T. -0.000 min
Lab File: VU053182.D
Acq: 02 Mar 2023 13:02

Tgt Ion: 78 Resp: 25773

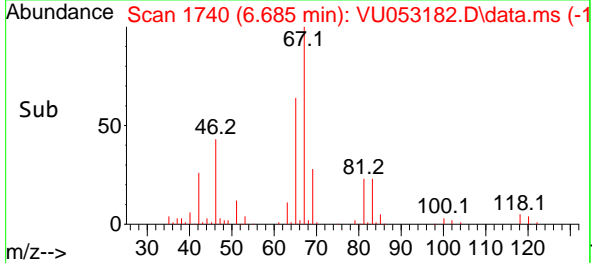
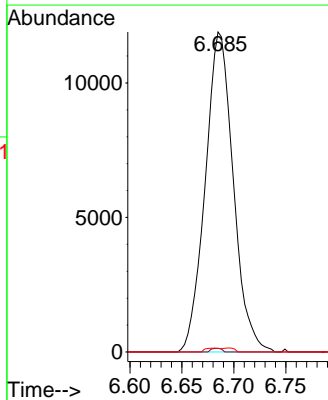
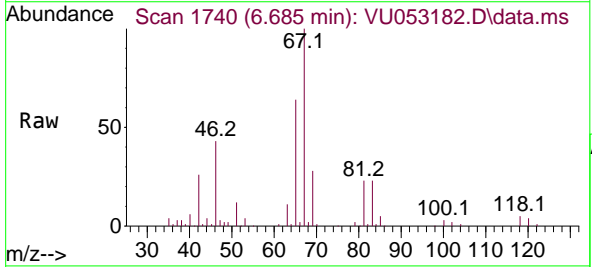
Instrument : MSVOA_U
ClientSampleId : C0LF2DL

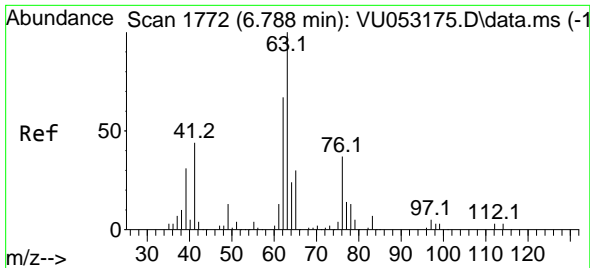


#35
Methylcyclohexane
Concen: 7.421 ug/L
RT: 6.685 min Scan# 1740
Delta R.T. -0.077 min
Lab File: VU053182.D
Acq: 02 Mar 2023 13:02

Tgt Ion: 83 Resp: 22307

Ion	Ratio	Lower	Upper
83	100		
55	0.4	57.4	86.2#
98	0.7	36.1	54.1#

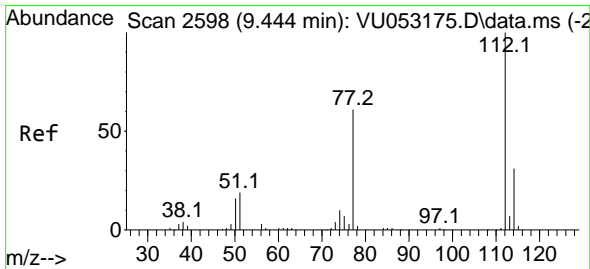
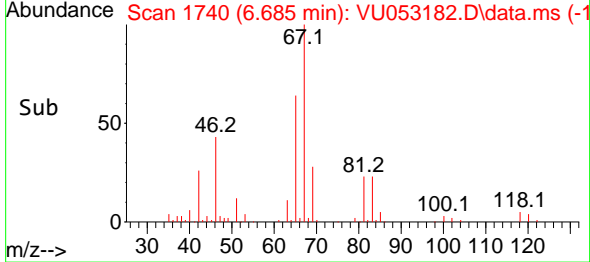
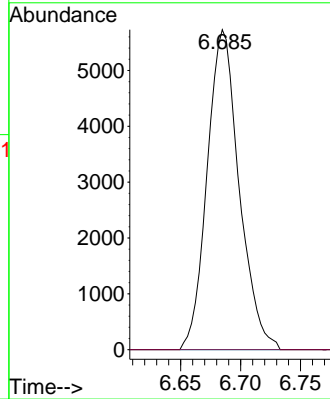
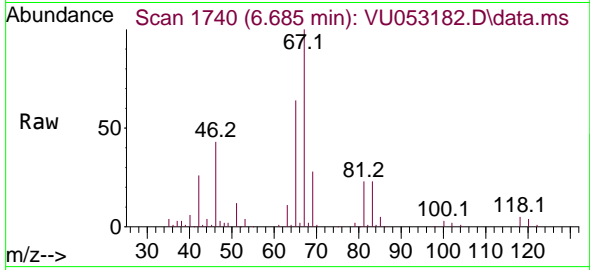




#37
 1,2-Dichloropropane
 Concen: 5.765 ug/L
 RT: 6.685 min Scan# 11
 Delta R.T. -0.103 min
 Lab File: VU053182.D
 Acq: 02 Mar 2023 13:02

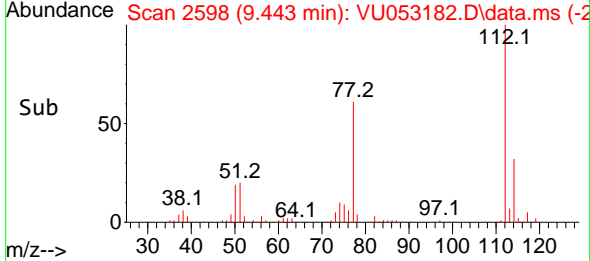
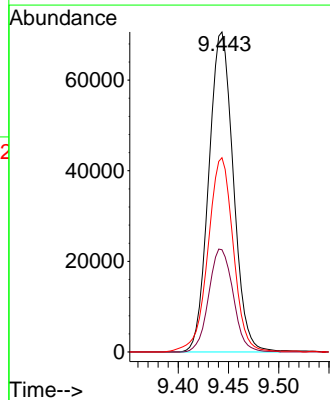
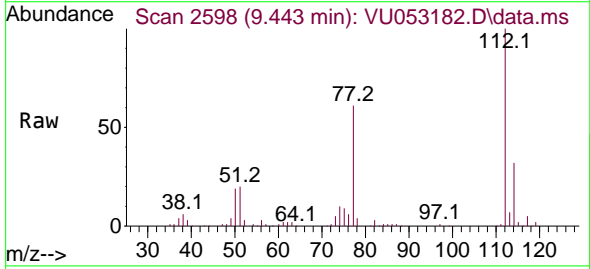
Instrument :
 MSVOA_U
 ClientSampleId :
 COLF2DL

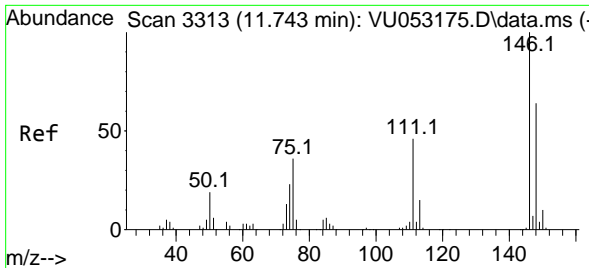
Tgt Ion: 63 Resp: 10633
 Ion Ratio Lower Upper
 63 100
 112 0.0 2.7 4.1#



#51
 Chlorobenzene
 Concen: 27.203 ug/L
 RT: 9.443 min Scan# 2598
 Delta R.T. -0.000 min
 Lab File: VU053182.D
 Acq: 02 Mar 2023 13:02

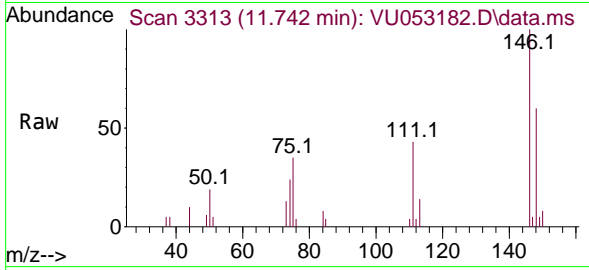
Tgt Ion: 112 Resp: 119887
 Ion Ratio Lower Upper
 112 100
 114 31.9 22.3 41.3
 77 60.7 48.8 73.2



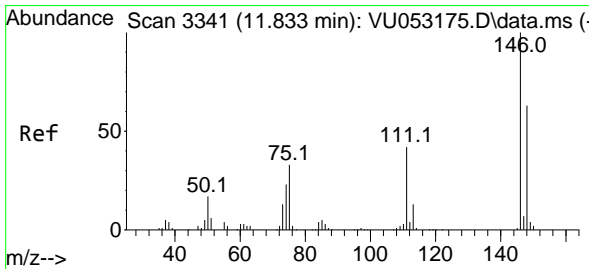
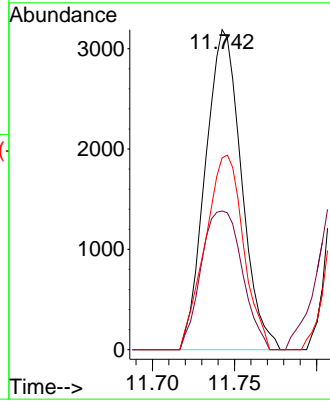
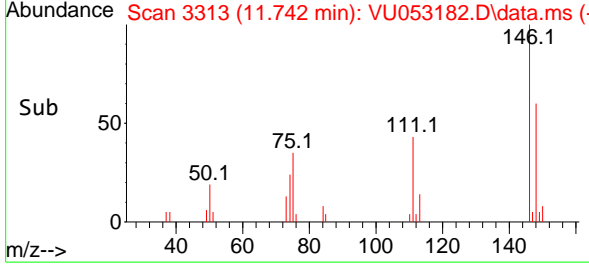


#64
 1,3-Dichlorobenzene
 Concen: 1.580 ug/L
 RT: 11.742 min Scan# 311
 Delta R.T. -0.000 min
 Lab File: VU053182.D
 Acq: 02 Mar 2023 13:02

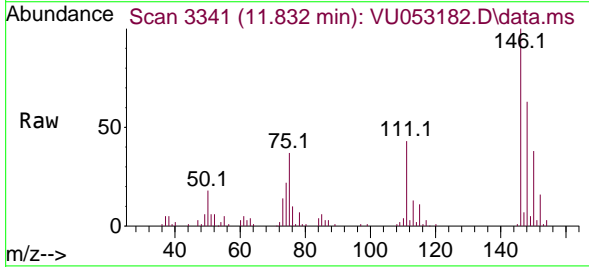
Instrument :
 MSVOA_U
 ClientSampleId :
 COLF2DL



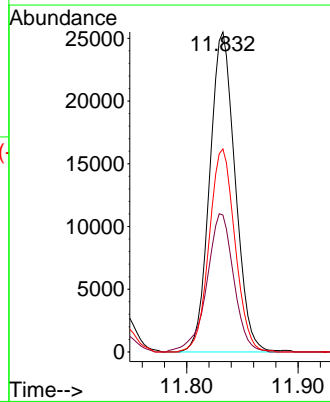
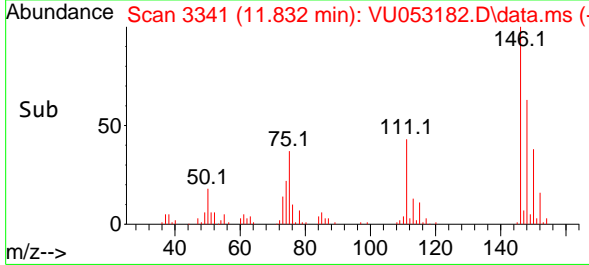
Tgt Ion:146 Resp: 4858
 Ion Ratio Lower Upper
 146 100
 111 43.3 32.1 59.5
 148 60.0 44.2 82.2

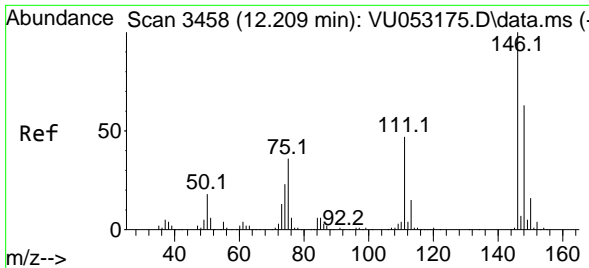


#65
 1,4-Dichlorobenzene
 Concen: 12.998 ug/L
 RT: 11.832 min Scan# 3341
 Delta R.T. -0.000 min
 Lab File: VU053182.D
 Acq: 02 Mar 2023 13:02



Tgt Ion:146 Resp: 40545
 Ion Ratio Lower Upper
 146 100
 111 42.8 29.9 55.5
 148 63.5 44.0 81.6

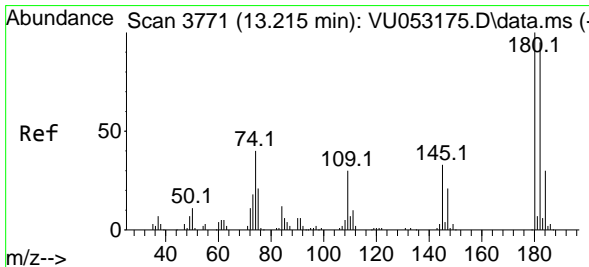
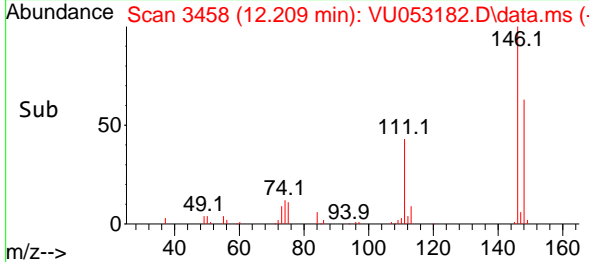
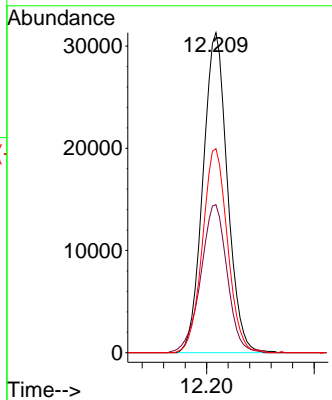
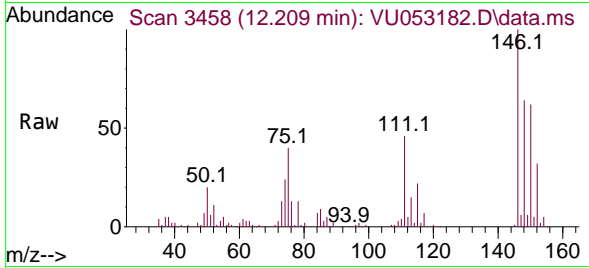




#67
 1,2-Dichlorobenzene
 Concen: 15.887 ug/L
 RT: 12.209 min Scan# 3458
 Delta R.T. -0.000 min
 Lab File: VU053182.D
 Acq: 02 Mar 2023 13:02

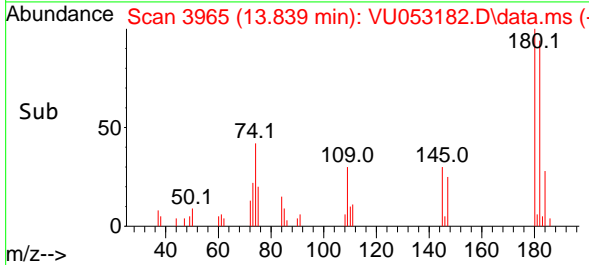
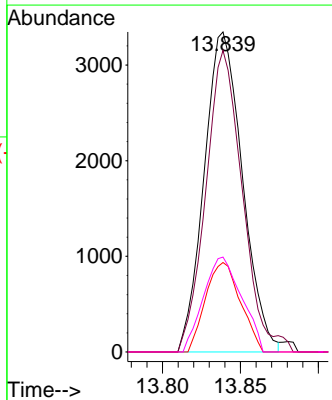
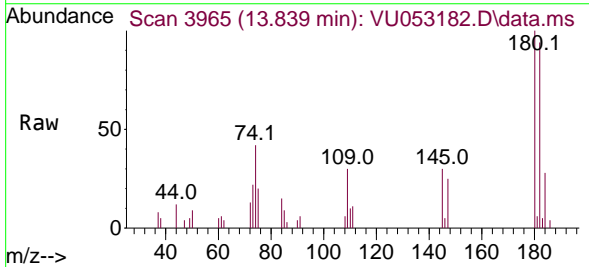
Instrument :
 MSVOA_U
 ClientSampleId :
 COLF2DL

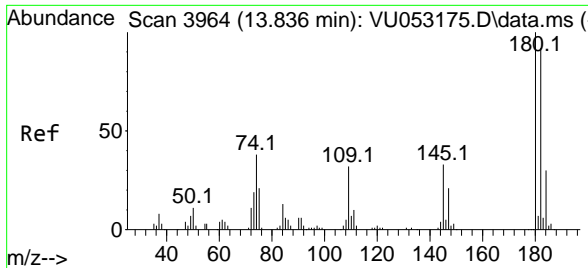
Tgt Ion:146 Resp: 49370
 Ion Ratio Lower Upper
 146 100
 111 46.3 37.8 56.6
 148 63.8 50.4 75.6



#69
 1,3,5-Trichlorobenzene
 Concen: 2.745 ug/L
 RT: 13.839 min Scan# 3965
 Delta R.T. 0.624 min
 Lab File: VU053182.D
 Acq: 02 Mar 2023 13:02

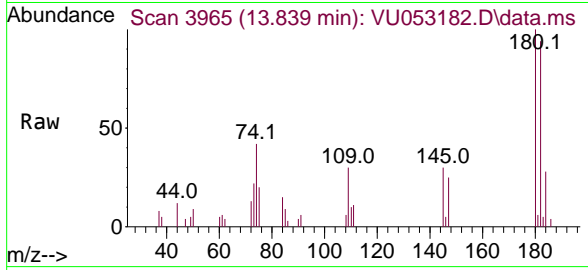
Tgt Ion:180 Resp: 5722
 Ion Ratio Lower Upper
 180 100
 182 88.4 76.9 115.3
 184 25.4 23.7 35.5
 145 29.5 25.7 38.5





#70
 1,2,4-trichlorobenzene
 Concen: 2.901 ug/L
 RT: 13.839 min Scan# 3965
 Delta R.T. 0.003 min
 Lab File: VU053182.D
 Acq: 02 Mar 2023 13:02

Instrument :
 MSVOA_U
 ClientSampleId :
 C0LF2DL



Tgt Ion:180 Resp: 5722

Ion	Ratio	Lower	Upper
180	100		
182	88.4	76.4	114.6
145	29.5	26.8	40.2

