

Data Path : Z:\VOASRV\HPCHEM1\MSVOA\_U\DATA\VU030419\  
 Data File : VU029789.D  
 Acq On : 04 Mar 2019 17:40  
 Operator : JC/SP  
 Sample : K1721-02  
 Misc : 5.0mL/MSVOA\_U/WATER  
 ALS Vial : 19 Sample Multiplier: 1

Instrument :  
 MSVOA\_U  
 ClientSampleId :  
 BF8C2

Integration Parameters: LSCINT.P

Integrator: RTE  
 Smoothing : OFF  
 Sampling : 1  
 Start Thrs: 0.2  
 Stop Thrs : 0

Filtering: 5  
 Min Area: 0 % of largest Peak  
 Max Peaks: 100  
 Peak Location: TOP

If leading or trailing edge < 100 prefer < Baseline drop else tangent >  
 Peak separation: 5

Method : Z:\VOASRV\HPCHEM1\MSVOA\_U\METHOD\SOMULM021519WMA.M  
 Title : VOC Analysis

Signal : TIC

peak #	R.T. min	first scan	max scan	last scan	PK TY	peak height	corr. area	corr. % max.	% of total
1	1.183	24	29	35	rBV	7473	7057	0.50%	0.060%
2	1.395	88	95	106	rBV	207992	214530	15.32%	1.809%
3	1.678	175	183	198	rBV	157383	198676	14.19%	1.675%
4	2.270	357	367	381	rVB	343789	519992	37.14%	4.384%
5	2.411	408	411	413	rBV2	565	340	0.02%	0.003%
6	2.424	413	415	418	rVB2	618	344	0.02%	0.003%
7	2.653	481	486	491	rBV3	420	458	0.03%	0.004%
8	2.829	535	541	550	rBV5	1098	1810	0.13%	0.015%
9	2.887	557	559	562	rVB	586	322	0.02%	0.003%
10	2.916	562	568	570	rBV2	365	452	0.03%	0.004%
11	2.961	578	582	583	rBV2	395	320	0.02%	0.003%
12	3.029	600	603	606	rBV	438	329	0.02%	0.003%
13	3.061	607	613	618	rVB3	557	699	0.05%	0.006%
14	3.087	618	621	625	rVB2	633	491	0.04%	0.004%
15	3.132	631	635	639	rBV	387	436	0.03%	0.004%
16	3.511	749	753	756	rBV2	353	310	0.02%	0.003%
17	3.543	760	763	766	rBV3	437	366	0.03%	0.003%
18	3.598	777	780	784	rBV	462	381	0.03%	0.003%
19	3.720	814	818	822	rVB3	497	392	0.03%	0.003%
20	3.813	843	847	851	rBV	605	576	0.04%	0.005%
21	4.000	903	905	908	rVB2	547	332	0.02%	0.003%
22	4.029	908	914	915	rBV2	612	601	0.04%	0.005%
23	4.077	925	929	931	rBV2	482	349	0.02%	0.003%
24	4.173	947	959	1001	rBV	122800	332704	23.76%	2.805%
25	4.646	1089	1106	1129	rBV	224008	544145	38.86%	4.588%
26	4.781	1145	1148	1151	rBV3	736	545	0.04%	0.005%
27	4.820	1157	1160	1164	rBV3	752	567	0.04%	0.005%
28	4.868	1169	1175	1177	rBV2	1057	936	0.07%	0.008%
29	4.971	1202	1207	1208	rVV	427	322	0.02%	0.003%
30	4.990	1210	1213	1216	rVV3	558	480	0.03%	0.004%
31	5.038	1224	1228	1233	rVV2	428	357	0.03%	0.003%
32	5.064	1233	1236	1241	rVB3	521	411	0.03%	0.003%
33	5.099	1241	1247	1251	rBV2	490	583	0.04%	0.005%
34	5.337	1297	1321	1351	rBV2	478631	1400202	100.00%	11.806%

Data Path : Z:\VOASRV\HPCHEM1\MSVOA\_U\DATA\VU030419\  
 Data File : VU029789.D  
 Acq On : 04 Mar 2019 17:40  
 Operator : JC/SP  
 Sample : K1721-02  
 Misc : 5.0mL/MSVOA\_U/WATER  
 ALS Vial : 19 Sample Multiplier: 1

Instrument :  
 MSVOA\_U  
 ClientSampleId :  
 BF8C2

## Integration Parameters: LSCINT.P

Integrator: RTE  
 Smoothing : OFF  
 Sampling : 1  
 Start Thrs: 0.2  
 Stop Thrs : 0

Filtering: 5  
 Min Area: 0 % of largest Peak  
 Max Peaks: 100  
 Peak Location: TOP

If leading or trailing edge < 100 prefer < Baseline drop else tangent >  
 Peak separation: 5

Method : Z:\VOASRV\HPCHEM1\MSVOA\_U\METHOD\SOMULM021519WMA.M  
 Title : VOC Analysis

35	5.685	1420	1429	1435	rVB4	953	1648	0.12%	0.014%
36	5.717	1435	1439	1442	rBV2	631	634	0.05%	0.005%
37	5.771	1453	1456	1464	rBV3	482	625	0.04%	0.005%
38	5.884	1473	1491	1530	rBV	557743	1096484	78.31%	9.245%
39	6.067	1543	1548	1549	rBV	479	356	0.03%	0.003%
40	6.177	1573	1582	1585	rBV4	2896	3803	0.27%	0.032%
41	6.328	1614	1629	1653	rBV2	294195	602610	43.04%	5.081%
42	6.550	1694	1698	1700	rBV	759	529	0.04%	0.004%
43	6.559	1700	1701	1705	rVV	580	399	0.03%	0.003%
44	6.588	1706	1710	1713	rVV2	480	428	0.03%	0.004%
45	6.627	1716	1722	1723	rVV2	419	460	0.03%	0.004%
46	6.675	1732	1737	1739	rBV	457	323	0.02%	0.003%
47	6.713	1745	1749	1752	rBV2	522	459	0.03%	0.004%
48	6.781	1765	1770	1776	rBV3	414	464	0.03%	0.004%
49	7.070	1856	1860	1863	rBV2	660	585	0.04%	0.005%
50	7.103	1867	1870	1875	rBV3	440	379	0.03%	0.003%
51	7.132	1875	1879	1883	rBV2	287	321	0.02%	0.003%
52	7.225	1897	1908	1925	rBV	166569	307126	21.93%	2.590%
53	7.392	1957	1960	1964	rBV	623	593	0.04%	0.005%
54	7.488	1988	1990	1993	rVV2	618	435	0.03%	0.004%
55	7.562	1997	2013	2049	rBV	665697	1181458	84.38%	9.962%
56	7.849	2091	2102	2124	rBV	115819	204627	14.61%	1.725%
57	8.000	2146	2149	2153	rVB2	544	426	0.03%	0.004%
58	8.022	2153	2156	2157	rBV2	777	369	0.03%	0.003%
59	8.099	2177	2180	2184	rBV	440	357	0.03%	0.003%
60	8.176	2200	2204	2208	rBV2	704	644	0.05%	0.005%
61	8.308	2232	2245	2280	rBV	430865	774465	55.31%	6.530%
62	8.469	2289	2295	2310	rVB6	7369	13896	0.99%	0.117%
63	8.594	2330	2334	2335	rBV2	574	362	0.03%	0.003%
64	8.694	2362	2365	2370	rBV2	434	438	0.03%	0.004%
65	8.823	2400	2405	2408	rBV2	406	418	0.03%	0.004%
66	8.874	2417	2421	2423	rBV3	450	329	0.02%	0.003%
67	8.951	2442	2445	2447	rVV2	532	316	0.02%	0.003%
68	8.990	2454	2457	2464	rVB2	689	734	0.05%	0.006%
69	9.086	2474	2487	2507	rBV	804409	1342226	95.86%	11.317%
70	9.379	2573	2578	2584	rBV5	799	958	0.07%	0.008%
71	9.591	2641	2644	2646	rVV	542	321	0.02%	0.003%

Data Path : Z:\VOASRV\HPCHEM1\MSVOA\_U\DATA\VU030419\  
 Data File : VU029789.D  
 Acq On : 04 Mar 2019 17:40  
 Operator : JC/SP  
 Sample : K1721-02  
 Misc : 5.0mL/MSVOA\_U/WATER  
 ALS Vial : 19 Sample Multiplier: 1

Instrument :  
 MSVOA\_U  
 ClientSampleId :  
 BF8C2

## Integration Parameters: LSCINT.P

Integrator: RTE  
 Smoothing : OFF  
 Sampling : 1  
 Start Thrs: 0.2  
 Stop Thrs : 0

Filtering: 5  
 Min Area: 0 % of largest Peak  
 Max Peaks: 100  
 Peak Location: TOP

If leading or trailing edge < 100 prefer < Baseline drop else tangent >  
 Peak separation: 5

Method : Z:\VOASRV\HPCHEM1\MSVOA\_U\METHOD\SOMULM021519WMA.M  
 Title : VOC Analysis

72	9.623	2651	2654	2657	rVB2	547	329	0.02%	0.003%
73	9.646	2657	2661	2664	rBV2	607	449	0.03%	0.004%
74	9.672	2665	2669	2674	rVB	593	603	0.04%	0.005%
75	9.704	2674	2679	2681	rBV2	393	410	0.03%	0.003%
76	9.787	2697	2705	2710	rBV4	2053	3340	0.24%	0.028%
77	9.897	2731	2739	2742	rBV2	603	743	0.05%	0.006%
78	9.919	2742	2746	2749	rBV3	681	635	0.05%	0.005%
79	10.032	2778	2781	2783	rBV	824	639	0.05%	0.005%
80	10.270	2852	2855	2861	rBV2	543	599	0.04%	0.005%
81	10.315	2866	2869	2874	rVV3	659	640	0.05%	0.005%
82	10.347	2877	2879	2883	rVB2	592	343	0.02%	0.003%
83	10.427	2892	2904	2923	rBV	459143	734371	52.45%	6.192%
84	10.588	2951	2954	2958	rVV3	485	395	0.03%	0.003%
85	10.678	2979	2982	2987	rVB2	649	491	0.04%	0.004%
86	10.707	2987	2991	2997	rBV2	508	523	0.04%	0.004%
87	10.855	3034	3037	3043	rBV2	352	348	0.02%	0.003%
88	10.996	3077	3081	3084	rVV2	438	380	0.03%	0.003%
89	11.157	3123	3131	3134	rBV4	1020	1346	0.10%	0.011%
90	11.482	3219	3232	3258	rBV	798754	1270097	90.71%	10.709%
91	11.858	3336	3349	3372	rBV	650931	1065840	76.12%	8.987%
92	12.816	3644	3647	3649	rBV	522	317	0.02%	0.003%
93	12.942	3683	3686	3689	rBV2	499	328	0.02%	0.003%
94	13.022	3706	3711	3713	rBV	572	541	0.04%	0.005%
95	13.154	3749	3752	3755	rBV2	574	519	0.04%	0.004%
96	13.196	3762	3765	3768	rBV	511	352	0.03%	0.003%
97	13.797	3948	3952	3955	rVB3	585	449	0.03%	0.004%
98	13.819	3956	3959	3961	rBV	805	627	0.04%	0.005%
99	15.067	4343	4347	4349	rBV2	841	726	0.05%	0.006%
100	15.417	4451	4456	4459	rBV4	1531	1635	0.12%	0.014%

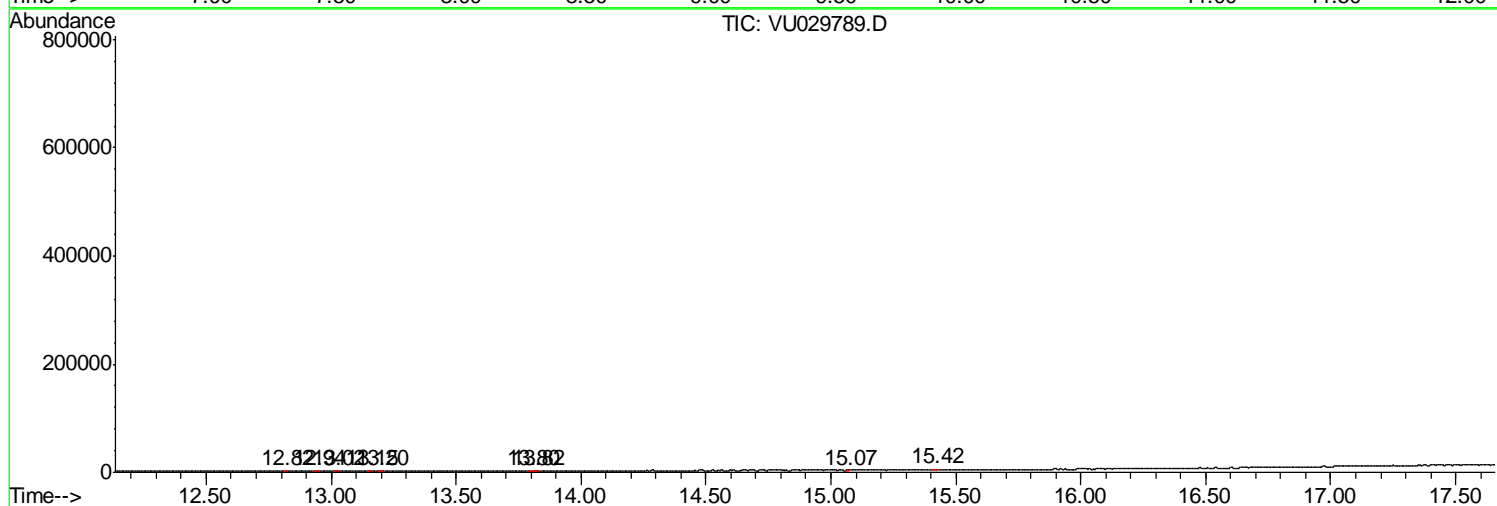
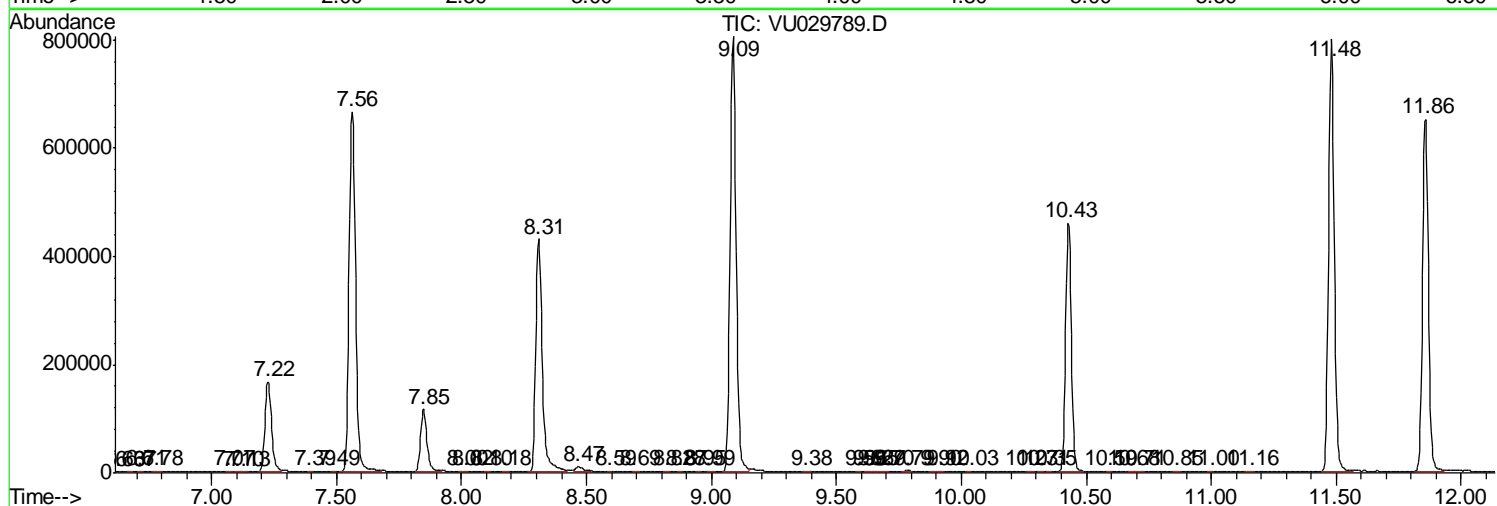
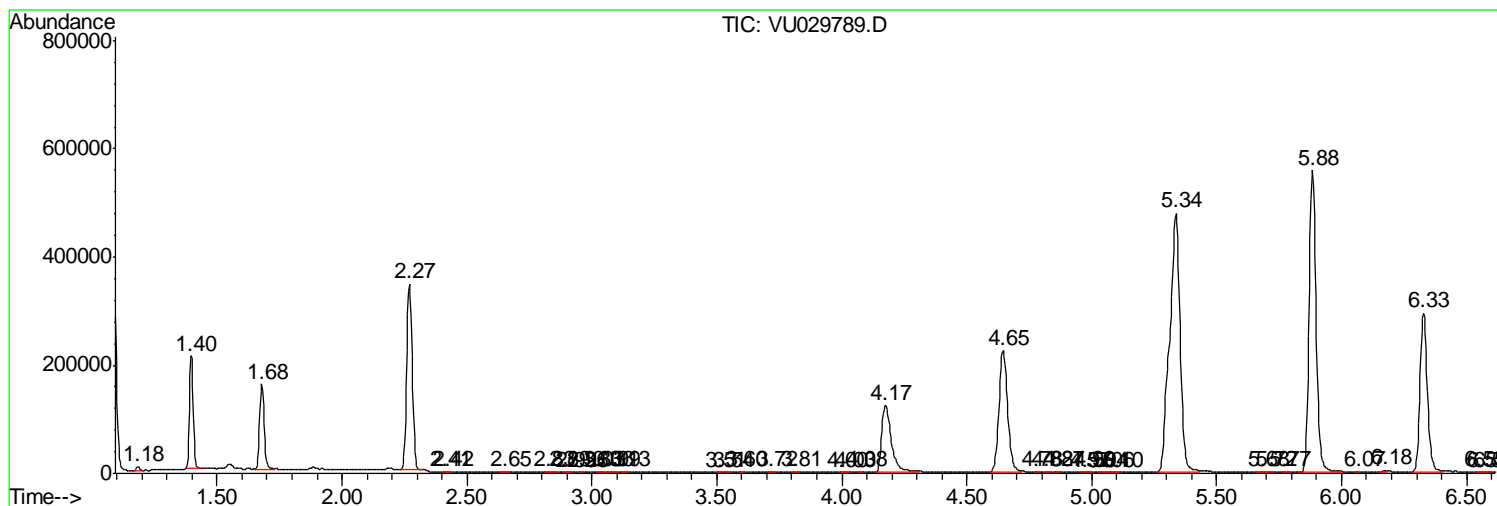
Sum of corrected areas: 11859835

Data Path : Z:\VOASRV\HPCHEM1\MSVOA\_U\DATA\VU030419\  
 Data File : VU029789.D  
 Acq On : 04 Mar 2019 17:40  
 Operator : JC/SP  
 Sample : K1721-02  
 Misc : 5.0mL/MSVOA\_U/WATER  
 ALS Vial : 19 Sample Multiplier: 1

Instrument :  
 MSVOA\_U  
 ClientSampled :  
 BF8C2

Quant Method : Z:\VOASRV\HPCHEM1\MSVOA\_U\METHOD\SOMULM021519WMA.M  
 Quant Title : VOC Analysis

TIC Library : C:\DATABASE\NIST11.L  
 TIC Integration Parameters: LSCINT.P



Data Path : Z:\VOASRV\HPCHEM1\MSVOA\_U\DATA\VU030419\  
Data File : VU029789.D  
Acq On : 04 Mar 2019 17:40  
Operator : JC/SP  
Sample : K1721-02  
Misc : 5.0mL/MSVOA\_U/WATER  
ALS Vial : 19 Sample Multiplier: 1

Instrument :  
MSVOA\_U  
ClientSampled :  
BF8C2

Quant Method : Z:\VOASRV\HPCHEM1\MSVOA\_U\METHOD\SOMULM021519WMA.M  
Quant Title : VOC Analysis

TIC Library : C:\DATABASE\NIST11.L  
TIC Integration Parameters: LSCINT.P

No Library Search Compounds Detected

\*\*\*\*\*

Data Path : Z:\VOASRV\HPCHEM1\MSVOA\_U\DATA\VU030419\  
Data File : VU029789.D  
Acq On : 04 Mar 2019 17:40  
Operator : JC/SP  
Sample : K1721-02  
Misc : 5.0mL/MSVOA\_U/WATER  
ALS Vial : 19 Sample Multiplier: 1

Instrument :  
MSVOA\_U  
ClientSampleId :  
BF8C2

Quant Method : Z:\VOASRV\HPCHEM1\MSVOA\_U\METHOD\SOMULM021519WMA.M  
Quant Title : VOC Analysis

TIC Library : C:\DATABASE\NIST11.L  
TIC Integration Parameters: LSCINT.P

TIC Top Hit name	RT	EstConc	Units	Response	--Internal Standard--			
					#	RT	Resp	Conc

---