

Data Path : Z:\VOASRV\HPCHEM1\MSVOA U\DATA\VU030520\  
 Data File : VU037089.D  
 Acq On : 05 Mar 2020 17:40  
 Operator : JC/MD  
 Sample : L1784-05DL 500X  
 Misc : 5.0mL/MSVOA U/WATER  
 ALS Vial : 21 Sample Multiplier: 1

Instrument :  
 MSVOA\_U  
 ClientSampleId :  
 C0AZ3DL

Quant Time: Mar 06 01:09:44 2020  
 Quant Method : Z:\VOASRV\HPCHEM1\MSVOA\_U\METHOD\SOMULM022420WMA.M  
 Quant Title : VOC Analysis  
 QLast Update : Thu Mar 05 22:35:59 2020  
 Response via : Initial Calibration

Internal Standards	R.T.	QIon	Response	Conc	Units	Dev(Min)
1) 1,4-Difluorobenzene	6.28	114	257624	50.00	ug/L	0.00
28) Chlorobenzene-d5	9.44	117	245974	50.00	ug/L	0.00
60) 1,4-Dichlorobenzene-d4	11.83	152	87678	50.00	ug/L	0.00

## System Monitoring Compounds

4) Vinyl Chloride-d3	1.61	65	74675	34.52	ug/L	0.00
Spiked Amount	50.000	Range	60 - 135	Recovery	=	69.04%
7) Chloroethane-d5	1.93	69	78533	43.87	ug/L	0.02
Spiked Amount	50.000	Range	70 - 130	Recovery	=	87.74%
11) 1,1-Dichloroethene-d2	2.59	63	106914	29.51	ug/L	0.00
Spiked Amount	50.000	Range	60 - 125	Recovery	=	59.02%#
21) 2-Butanone-d5	4.67	46	146094	100.67	ug/L	0.00
Spiked Amount	100.000	Range	40 - 130	Recovery	=	100.67%
24) Chloroform-d	5.11	84	152831	46.26	ug/L	0.00
Spiked Amount	50.000	Range	70 - 125	Recovery	=	92.52%
26) 1,2-Dichloroethane-d4	5.74	65	108980	48.74	ug/L	0.00
Spiked Amount	50.000	Range	70 - 125	Recovery	=	97.48%
32) Benzene-d6	5.76	84	326873	45.95	ug/L	0.00
Spiked Amount	50.000	Range	70 - 125	Recovery	=	91.90%
36) 1,2-Dichloropropane-d6	6.72	67	111429	48.35	ug/L	0.00
Spiked Amount	50.000	Range	70 - 120	Recovery	=	96.70%
41) Toluene-d8	7.92	98	286460	43.41	ug/L	0.00
Spiked Amount	50.000	Range	80 - 120	Recovery	=	86.82%
43) trans-1,3-Dichloropropene-	8.20	79	44950	41.97	ug/L	0.00
Spiked Amount	50.000	Range	60 - 125	Recovery	=	83.94%
47) 2-Hexanone-d5	8.66	63	98838	87.72	ug/L	0.00
Spiked Amount	100.000	Range	45 - 130	Recovery	=	87.72%
57) 1,1,2,2-Tetrachloroethane-	10.77	84	155643	47.90	ug/L	0.00
Spiked Amount	50.000	Range	65 - 120	Recovery	=	95.80%
64) 1,2-Dichlorobenzene-d4	12.21	152	87207	50.88	ug/L	0.00
Spiked Amount	50.000	Range	80 - 120	Recovery	=	101.76%

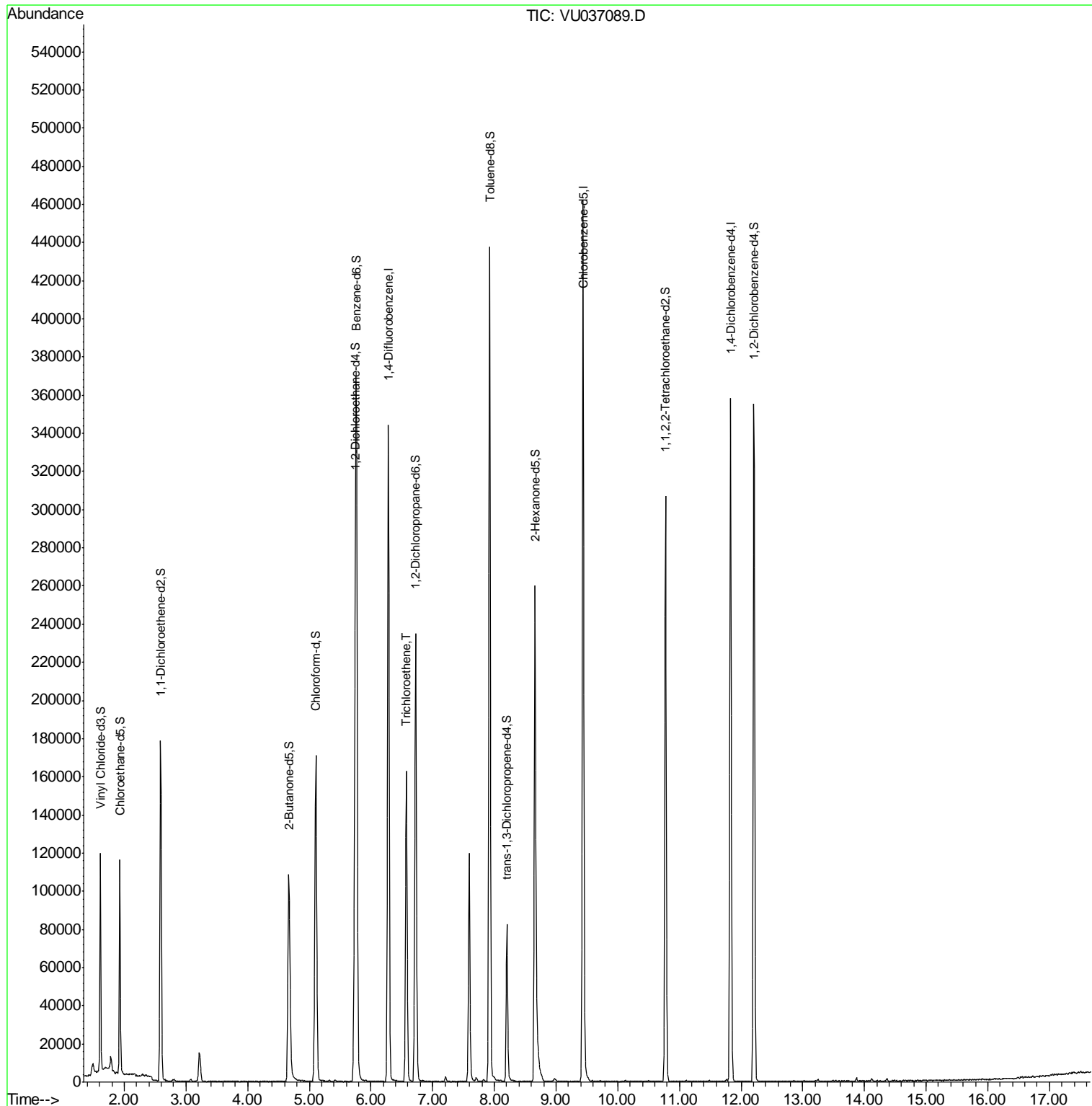
Target Compounds	R.T.	QIon	Response	Conc	Units	Ovalue
34) Trichloroethene	6.57	95	55645	29.135	ug/L	97

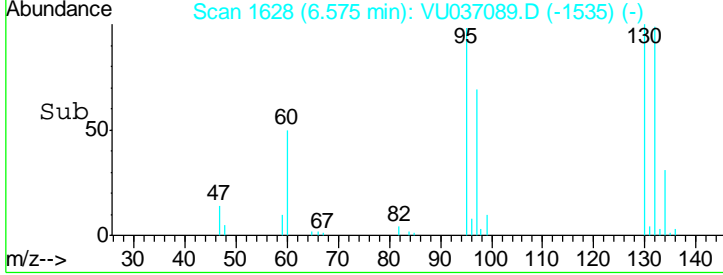
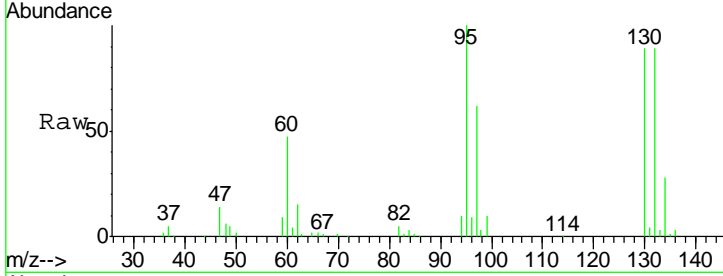
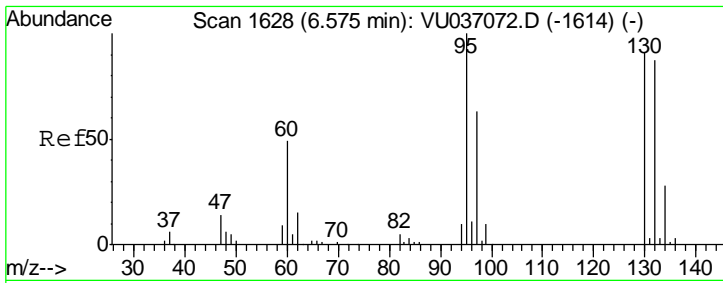
(#) = qualifier out of range (m) = manual integration (+) = signals summed

Data Path : Z:\VOASRV\HPCHEM1\MSVOA U\DATA\VU030520\  
 Data File : VU037089.D  
 Acq On : 05 Mar 2020 17:40  
 Operator : JC/MD  
 Sample : L1784-05DL 500X  
 Misc : 5.0mL/MSVOA U/WATER  
 ALS Vial : 21 Sample Multiplier: 1

Instrument :  
 MSVOA\_U  
 ClientSampled :  
 C0AZ3DL

Quant Time: Mar 06 01:09:44 2020  
 Quant Method : Z:\VOASRV\HPCHEM1\MSVOA\_U\METHOD\SOMULM022420WMA.M  
 Quant Title : VOC Analysis  
 QLast Update : Thu Mar 05 22:35:59 2020  
 Response via : Initial Calibration





#34  
 Trichloroethene  
 Concen: 29.135 ug/L  
 RT: 6.57 min Scan# 1628  
 Delta R.T. 0.00 min  
 Lab File: VU037089.D  
 Acq: 05 Mar 2020 17:40

**Instrument :**  
 MSVOA\_U  
**ClientSampled :**  
 C0AZ3DL

Tot Ion: 95 Resp: 55645

Ion	Ratio	Lower	Upper
95	100		
97	61.6	44.1	81.9
132	88.7	60.6	112.6
130	89.4	64.9	120.5

