

Data Path : Z:\voasrv\HPCHEM1\MSVOA\_U\Data\VU030521\  
 Data File : VU042505.D  
 Acq On : 05 Mar 2021 16:16  
 Operator : SY/MD  
 Sample : M1588-06  
 Misc : 25.0mL/MSVOA\_U/WATER  
 ALS Vial : 12 Sample Multiplier: 1

Instrument :  
 MSVOA\_U  
 ClientSampleId :  
 C03T0

Quant Time: Mar 06 00:48:52 2021  
 Quant Method : Z:\voasrv\HPCHEM1\MSVOA\_U\Method\SOMUTR030221WMA.M  
 Quant Title : TRACE VOA SOM01.0  
 QLast Update : Fri Mar 05 00:31:48 2021  
 Response via : Initial Calibration

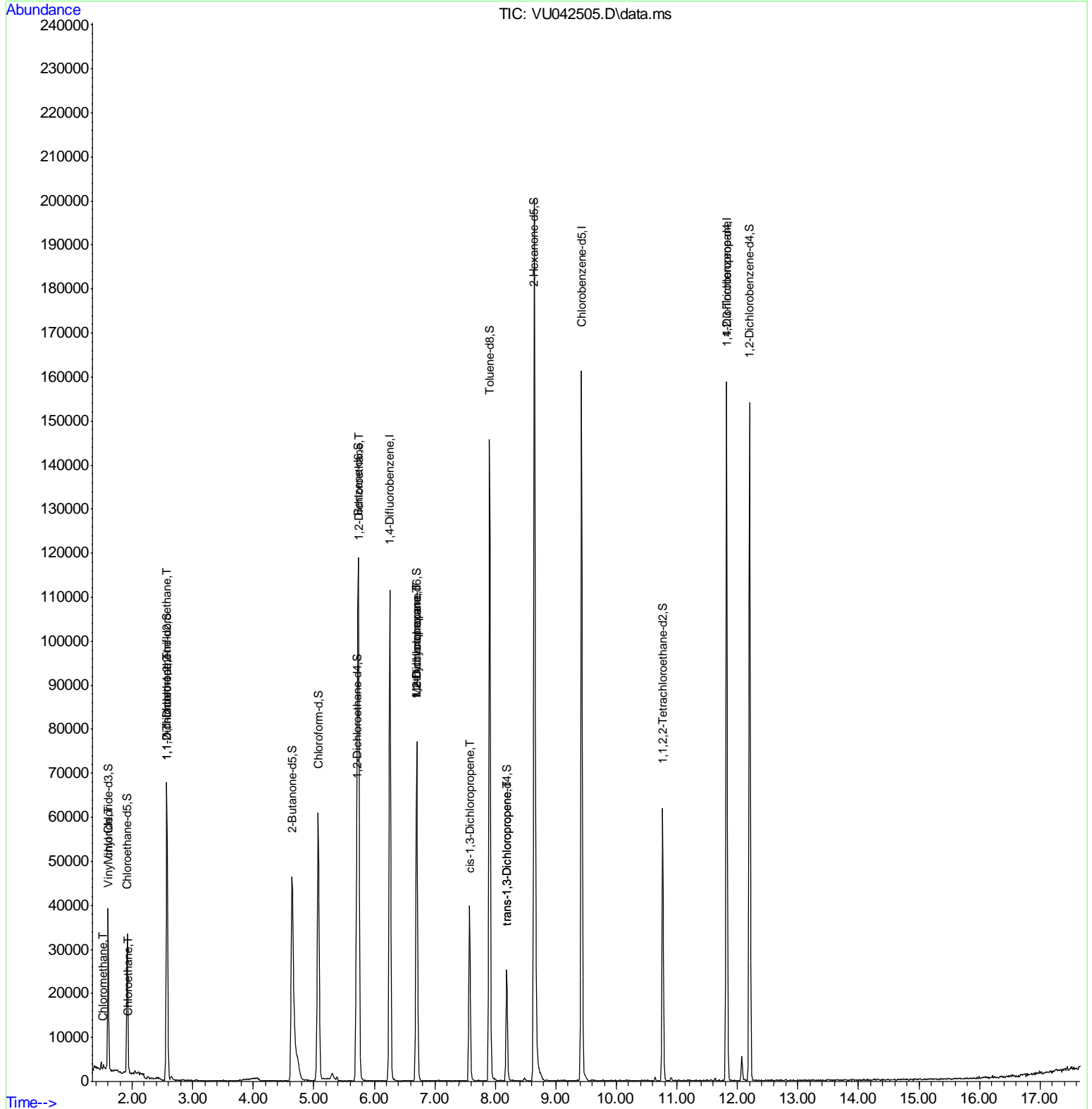
Compound	R.T.	QIon	Response	Conc	Units	Dev(Min)
-----						
Internal Standards						
1) 1,4-Difluorobenzene	6.257	114	85817	5.00	ug/L	0.00
28) Chlorobenzene-d5	9.424	117	81741	5.00	ug/L	0.00
60) 1,4-Dichlorobenzene-d4	11.822	152	39783	5.00	ug/L	0.00
System Monitoring Compounds						
4) Vinyl Chloride-d3	1.601	65	24622	4.30	ug/L	0.00
Spiked Amount	5.000	Range 40 - 130	Recovery	=	86.00%	
7) Chloroethane-d5	1.919	69	20986	4.84	ug/L	0.00
Spiked Amount	5.000	Range 65 - 130	Recovery	=	96.80%	
11) 1,1-Dichloroethene-d2	2.572	63	42930	3.32	ug/L	0.00
Spiked Amount	5.000	Range 60 - 125	Recovery	=	66.40%	
20) 2-Butanone-d5	4.643	46	99963	53.22	ug/L	0.00
Spiked Amount	50.000	Range 40 - 130	Recovery	=	106.44%	
24) Chloroform-d	5.073	84	53395	4.72	ug/L	0.00
Spiked Amount	5.000	Range 70 - 125	Recovery	=	94.40%	
26) 1,2-Dichloroethane-d4	5.710	65	34969	5.02	ug/L	0.00
Spiked Amount	5.000	Range 70 - 130	Recovery	=	100.40%	
32) Benzene-d6	5.736	84	98165	4.90	ug/L	0.00
Spiked Amount	5.000	Range 70 - 125	Recovery	=	98.00%	
36) 1,2-Dichloropropane-d6	6.697	67	33321	5.15	ug/L	0.00
Spiked Amount	5.000	Range 60 - 140	Recovery	=	103.00%	
41) Toluene-d8	7.906	98	90073	4.60	ug/L	0.00
Spiked Amount	5.000	Range 70 - 130	Recovery	=	92.00%	
43) trans-1,3-Dichloroprop...	8.186	79	13556	4.49	ug/L	0.00
Spiked Amount	5.000	Range 55 - 130	Recovery	=	89.80%	
46) 2-Hexanone-d5	8.642	63	72212	49.93	ug/L	0.00
Spiked Amount	50.000	Range 45 - 130	Recovery	=	99.86%	
57) 1,1,2,2-Tetrachloroeth...	10.764	84	27780	4.82	ug/L	0.00
Spiked Amount	5.000	Range 65 - 120	Recovery	=	96.40%	
64) 1,2-Dichlorobenzene-d4	12.202	152	38230	5.30	ug/L	0.00
Spiked Amount	5.000	Range 80 - 120	Recovery	=	106.00%	
-----						
Target Compounds						Qvalue
3) Chloromethane	1.520	50	827	0.11	ug/L #	77
5) Vinyl chloride	1.607	62	382	0.05	ug/L #	15
8) Chloroethane	1.938	64	345	0.08	ug/L #	43
10) 1,1,2-Trichloro-1,2,2-...	2.578	101	406	0.06	ug/L #	18
12) 1,1-Dichloroethene	2.578	96	492	0.08	ug/L #	1
27) 1,2-Dichloroethane	5.739	62	638	0.07	ug/L #	75
35) Methylcyclohexane	6.700	83	8069	0.75	ug/L #	14
37) 1,2-Dichloropropane	6.700	63	4147	0.60	ug/L #	87
39) cis-1,3-Dichloropropene	7.578	75	1001	0.10	ug/L #	70
44) trans-1,3-Dichloropropene	8.189	75	815	0.09	ug/L #	57
59) 1,2,3-Trichloropropane	11.819	75	4796	0.92	ug/L #	84
-----						

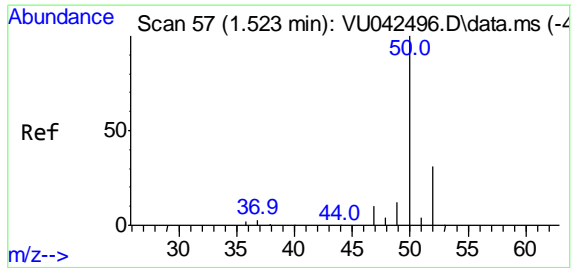
(#) = qualifier out of range (m) = manual integration (+) = signals summed

Data Path : Z:\voasrv\HPCHEM1\MSVOA\_U\Data\VU030521\  
 Data File : VU042505.D  
 Acq On : 05 Mar 2021 16:16  
 Operator : SY/MD  
 Sample : M1588-06  
 Misc : 25.0mL/MSVOA\_U/WATER  
 ALS Vial : 12 Sample Multiplier: 1

Instrument :  
 MSVOA\_U  
 ClientSampled :  
 C03T0

Quant Time: Mar 06 00:48:52 2021  
 Quant Method : Z:\voasrv\HPCHEM1\MSVOA\_U\Method\SOMUTR030221WMA.M  
 Quant Title : TRACE VOA SOM01.0  
 QLast Update : Fri Mar 05 00:31:48 2021  
 Response via : Initial Calibration

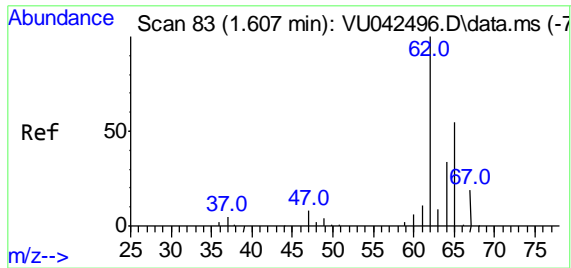
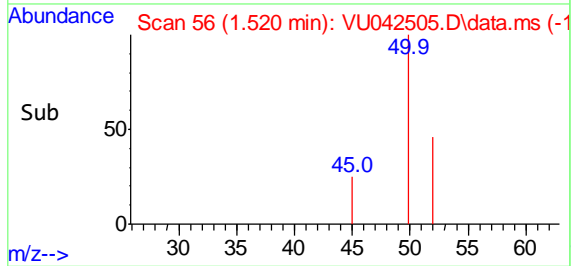
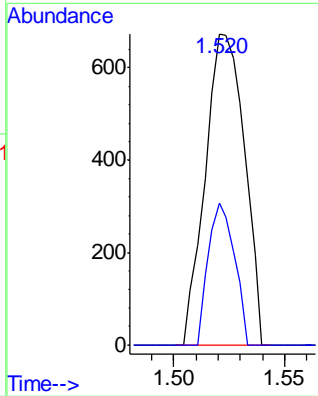
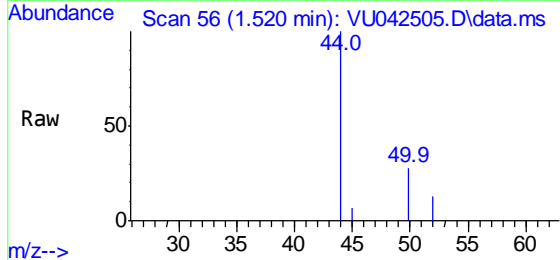




#3  
 Chloromethane  
 Concen: 0.11 ug/L  
 RT: 1.520 min Scan# 56  
 Delta R.T. 0.000 min  
 Lab File: VU042505.D  
 Acq: 05 Mar 2021 16:16

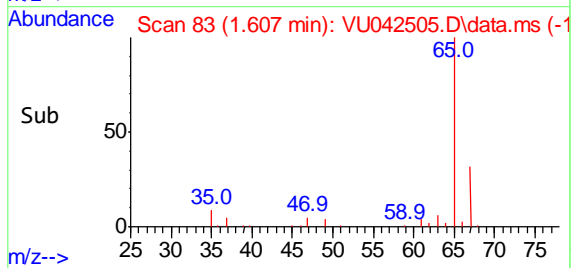
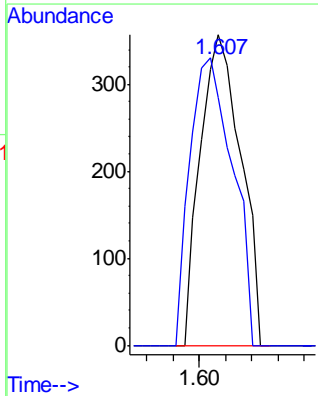
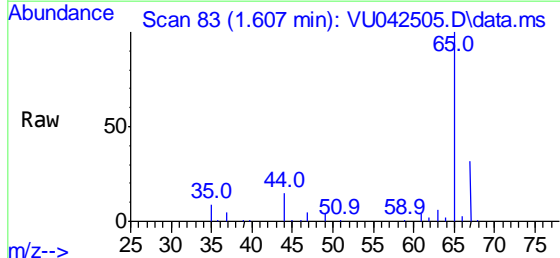
**Instrument :**  
 MSVOA\_U  
**ClientSampled :**  
 C03T0

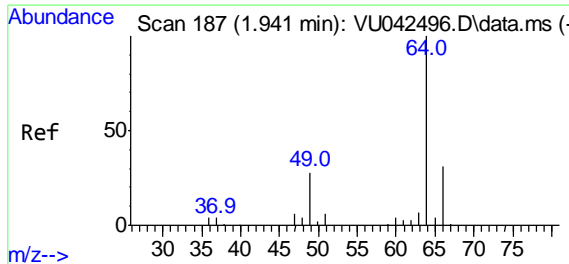
Tgt Ion: 50 Resp: 827  
 Ion Ratio Lower Upper  
 50 100  
 52 45.6 23.0 42.8#



#5  
 Vinyl chloride  
 Concen: 0.05 ug/L  
 RT: 1.607 min Scan# 83  
 Delta R.T. 0.000 min  
 Lab File: VU042505.D  
 Acq: 05 Mar 2021 16:16

Tgt Ion: 62 Resp: 382  
 Ion Ratio Lower Upper  
 62 100  
 64 79.8 22.7 42.1#



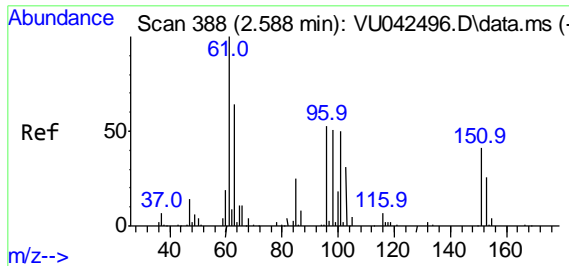
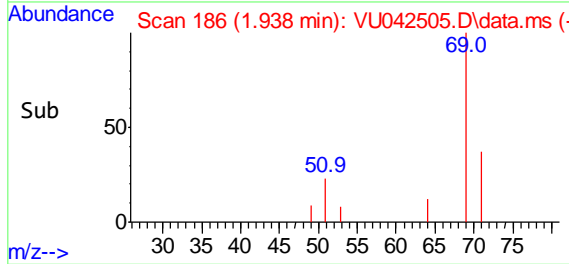
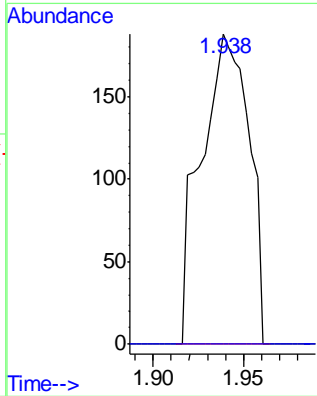
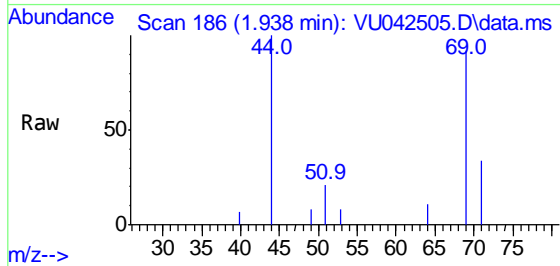


#8  
 Chloroethane  
 Concen: 0.08 ug/L  
 RT: 1.938 min Scan# 186  
 Delta R.T. 0.000 min  
 Lab File: VU042505.D  
 Acq: 05 Mar 2021 16:16

Instrument :  
 MSVOA\_U  
 ClientSampled :  
 C03T0

Tgt Ion: 64 Resp: 345

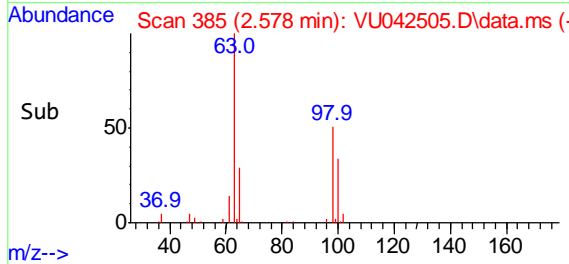
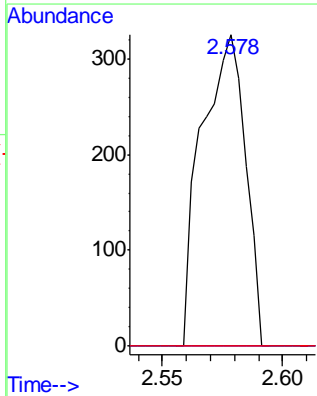
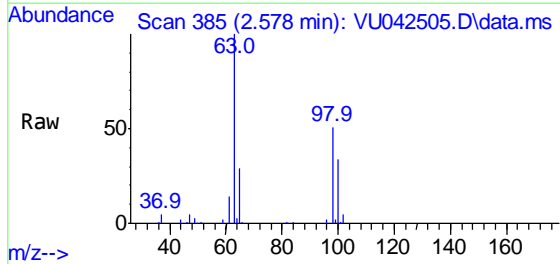
Ion	Ratio	Lower	Upper
64	100		
66	0.0	22.2	41.2#

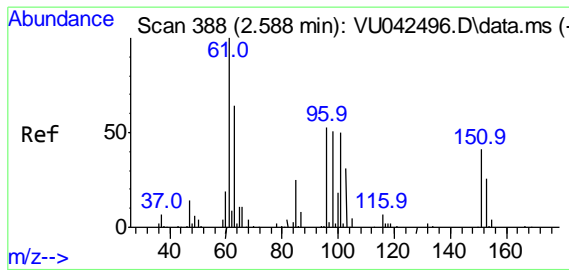


#10  
 1,1,2-Trichloro-1,2,2-trifluoroethane  
 Concen: 0.06 ug/L  
 RT: 2.578 min Scan# 385  
 Delta R.T. -0.009 min  
 Lab File: VU042505.D  
 Acq: 05 Mar 2021 16:16

Tgt Ion: 101 Resp: 406

Ion	Ratio	Lower	Upper
101	100		
85	0.0	34.6	51.8#
151	0.0	62.7	94.1#

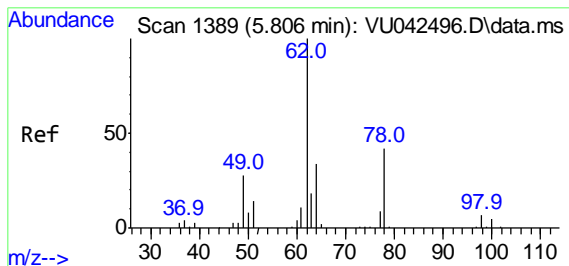
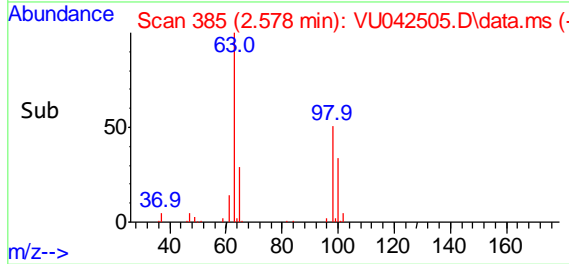
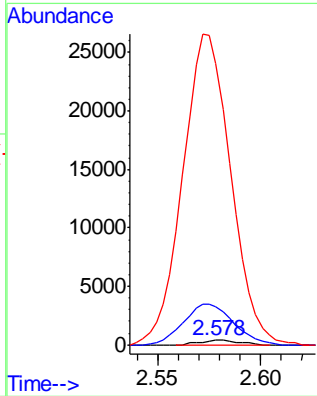
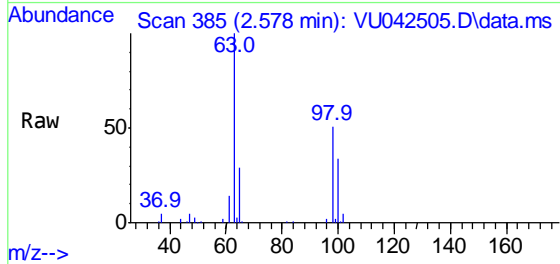




#12  
 1,1-Dichloroethene  
 Concen: 0.08 ug/L  
 RT: 2.578 min Scan# 385  
 Delta R.T. -0.009 min  
 Lab File: VU042505.D  
 Acq: 05 Mar 2021 16:16

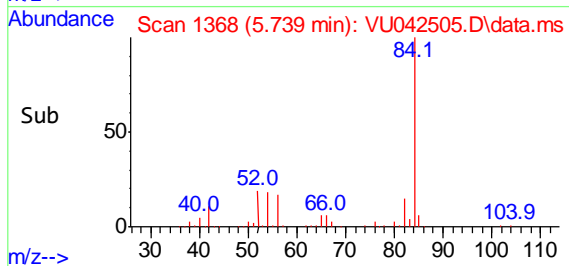
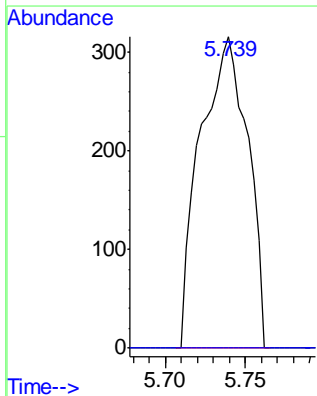
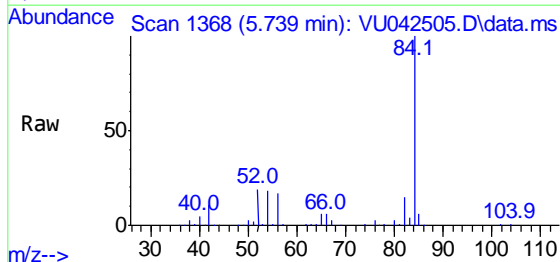
Instrument :  
 MSVOA\_U  
 ClientSampled :  
 C03T0

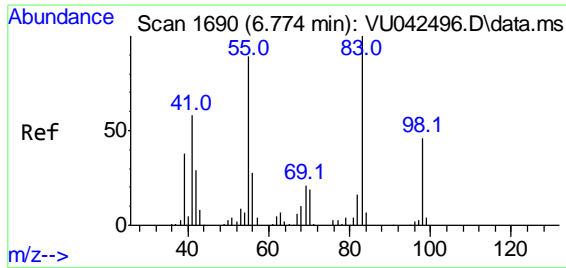
Tgt Ion: 96 Resp: 492  
 Ion Ratio Lower Upper  
 96 100  
 61 886.5 126.2 234.4#  
 63 6484.1 77.8 144.4#



#27  
 1,2-Dichloroethane  
 Concen: 0.07 ug/L  
 RT: 5.739 min Scan# 1368  
 Delta R.T. -0.067 min  
 Lab File: VU042505.D  
 Acq: 05 Mar 2021 16:16

Tgt Ion: 62 Resp: 638  
 Ion Ratio Lower Upper  
 62 100  
 98 0.0 7.3 10.9#

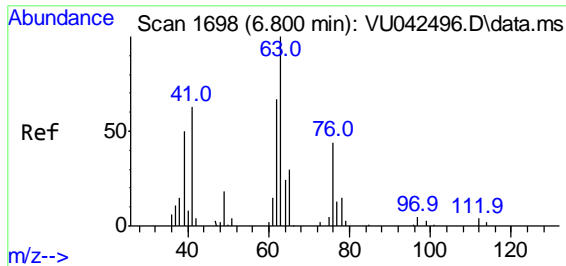
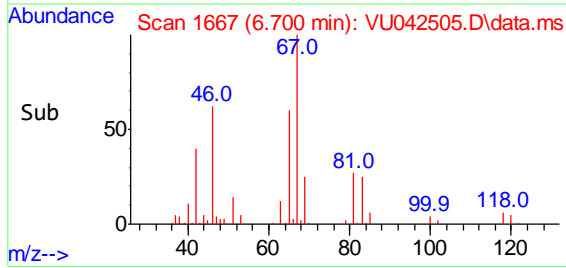
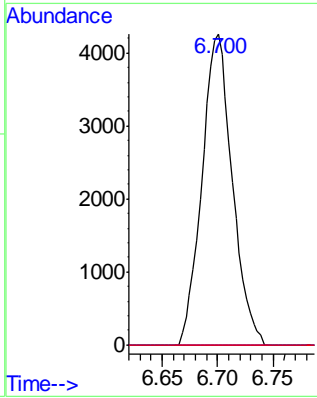
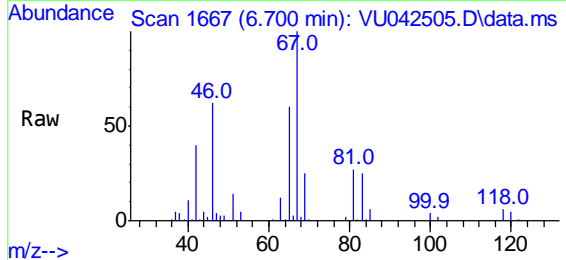




#35  
 Methylcyclohexane  
 Concen: 0.75 ug/L  
 RT: 6.700 min Scan# 1667  
 Delta R.T. -0.071 min  
 Lab File: VU042505.D  
 Acq: 05 Mar 2021 16:16

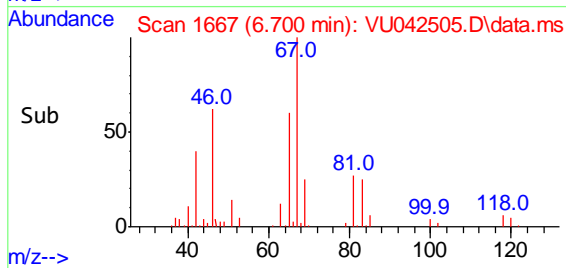
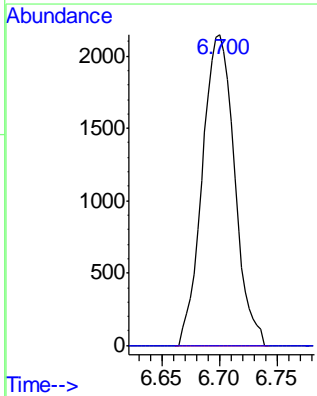
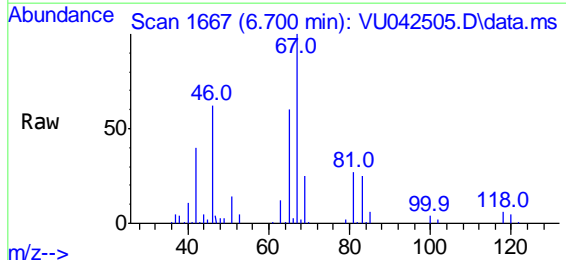
**Instrument :**  
 MSVOA\_U  
**ClientSampled :**  
 C03T0

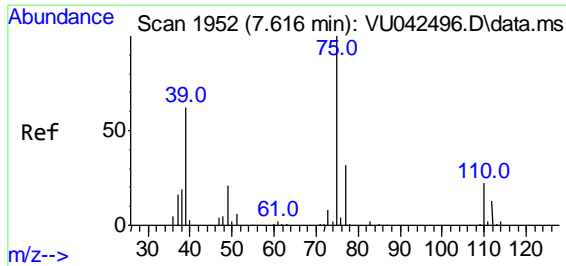
Tgt Ion	Resp	Lower	Upper
83	100		
55	0.0	68.2	102.4#
98	0.0	39.7	59.5#



#37  
 1,2-Dichloropropane  
 Concen: 0.60 ug/L  
 RT: 6.700 min Scan# 1667  
 Delta R.T. -0.099 min  
 Lab File: VU042505.D  
 Acq: 05 Mar 2021 16:16

Tgt Ion	Resp	Lower	Upper
63	100		
112	0.0	3.4	5.0#

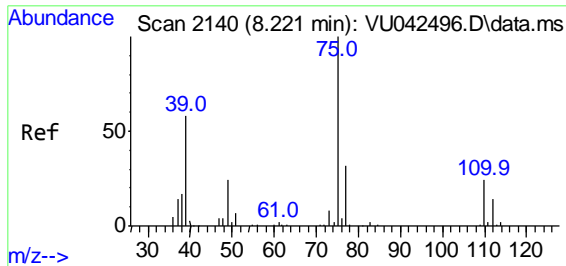
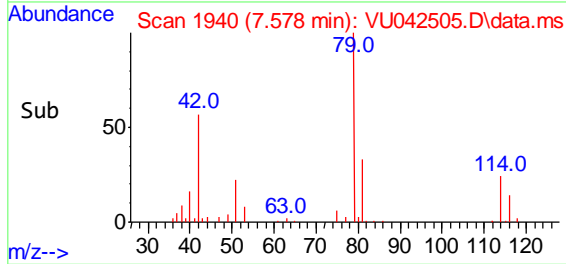
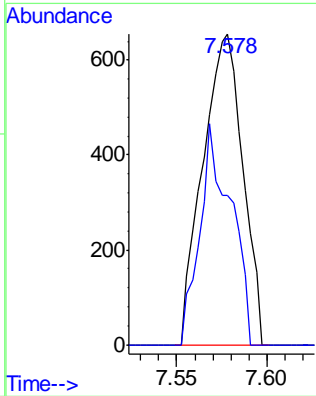
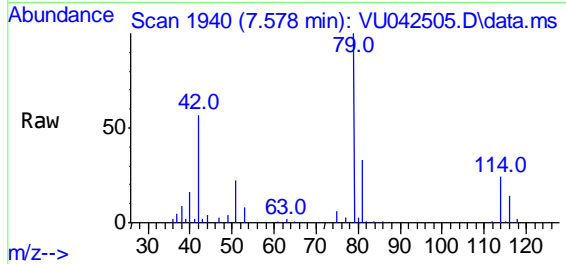




#39  
 cis-1,3-Dichloropropene  
 Concen: 0.10 ug/L  
 RT: 7.578 min Scan# 1940  
 Delta R.T. -0.038 min  
 Lab File: VU042505.D  
 Acq: 05 Mar 2021 16:16

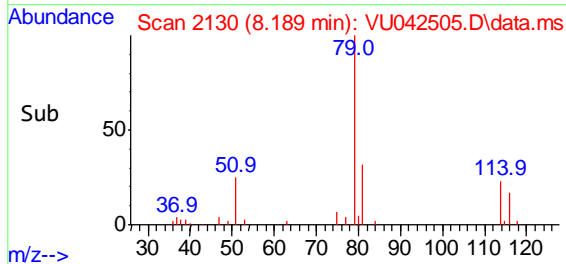
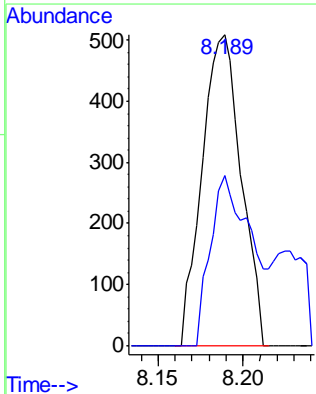
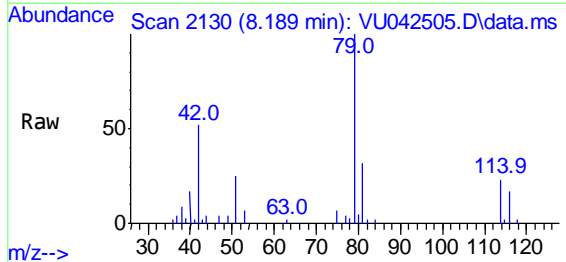
Instrument :  
 MSVOA\_U  
 ClientSampled :  
 C03T0

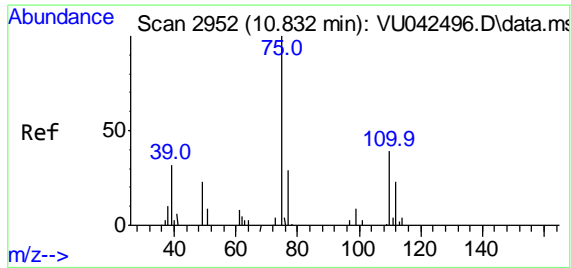
Tgt Ion: 75 Resp: 1001  
 Ion Ratio Lower Upper  
 75 100  
 77 48.1 22.0 40.8#



#44  
 trans-1,3-Dichloropropene  
 Concen: 0.09 ug/L  
 RT: 8.189 min Scan# 2130  
 Delta R.T. -0.029 min  
 Lab File: VU042505.D  
 Acq: 05 Mar 2021 16:16

Tgt Ion: 75 Resp: 815  
 Ion Ratio Lower Upper  
 75 100  
 77 54.6 21.8 40.4#





#59  
 1,2,3-Trichloropropane  
 Concen: 0.92 ug/L  
 RT: 11.819 min Scan# 3259  
 Delta R.T. 0.987 min  
 Lab File: VU042505.D  
 Acq: 05 Mar 2021 16:16

**Instrument :**  
 MSVOA\_U  
**ClientSampled :**  
 C03T0

Tgt Ion: 75 Resp: 4796  
 Ion Ratio Lower Upper  
 75 100  
 77 41.4 26.0 39.0#

