

Data Path : Z:\voasrv\HPCHEM1\MSVOA\_U\Data\VU030821\  
 Data File : VU042526.D  
 Acq On : 08 Mar 2021 14:05  
 Operator : SY/MD  
 Sample : M1588-01DL 20X  
 Misc : 25.0mL/MSVOA\_U/WATER  
 ALS Vial : 13 Sample Multiplier: 1

Instrument :  
 MSVOA\_U  
 ClientSampleId :  
 C03S5DL

Integration Parameters: rteint.p  
 Integrator: RTE  
 Smoothing : ON  
 Sampling : 1  
 Start Thrs : 0.1  
 Stop Thrs : 0  
 Filtering: 5  
 Min Area: 3 % of largest Peak  
 Max Peaks: 100  
 Peak Location: TOP

If leading or trailing edge < 100 prefer < Baseline drop else tangent >  
 Peak separation: 5

Method : Z:\voasrv\HPCHEM1\MSVOA\_U\Method\SOMUTR030221WMA.M  
 Title : TRACE VOA SOM01.0

Signal : TIC: VU042526.D\data.ms

peak #	R.T. min	first scan	max scan	last scan	PK TY	peak height	corr. area	corr. % max.	% of total
1	1.604	72	82	95	rVB	33982	44089	10.91%	1.265%
2	1.919	171	180	194	rVB	31059	41482	10.26%	1.191%
3	2.584	371	387	405	rBV4	164343	318106	78.71%	9.130%
4	3.054	525	533	543	rVB5	2949	5340	1.32%	0.153%
5	3.883	773	791	802	rBV3	3680	8391	2.08%	0.241%
6	4.649	1013	1029	1051	rBV2	39343	126812	31.38%	3.640%
7	5.073	1146	1161	1181	rBV	62746	137076	33.92%	3.934%
8	5.327	1220	1240	1257	rBV	173344	399605	98.88%	11.469%
9	5.735	1344	1367	1391	rBV2	120651	321248	79.49%	9.220%
10	6.259	1513	1530	1546	rBV	122107	230523	57.04%	6.616%
11	6.700	1651	1667	1687	rBV	78917	150989	37.36%	4.333%
12	7.574	1928	1939	1961	rBV	40676	71870	17.78%	2.063%
13	7.906	2027	2042	2058	rBV	151480	262390	64.93%	7.531%
14	8.189	2116	2130	2144	rBV2	26378	44796	11.08%	1.286%
15	8.645	2257	2272	2297	rBV	195976	404135	100.00%	11.599%
16	9.423	2501	2514	2535	rBV	175199	292427	72.36%	8.393%
17	10.642	2884	2893	2901	rBV3	4804	7185	1.78%	0.206%
18	10.764	2920	2931	2946	rVB2	62868	102293	25.31%	2.936%
19	11.819	3247	3259	3277	rBV	170976	270884	67.03%	7.774%
20	12.201	3366	3378	3394	rVB	151026	244657	60.54%	7.022%

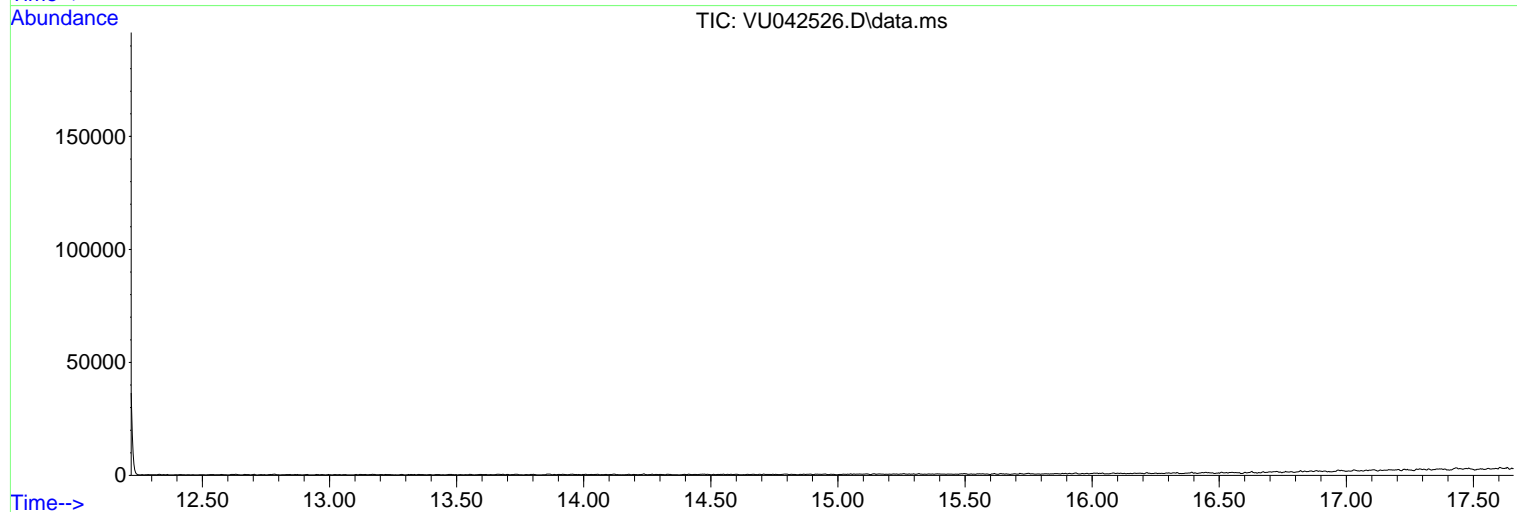
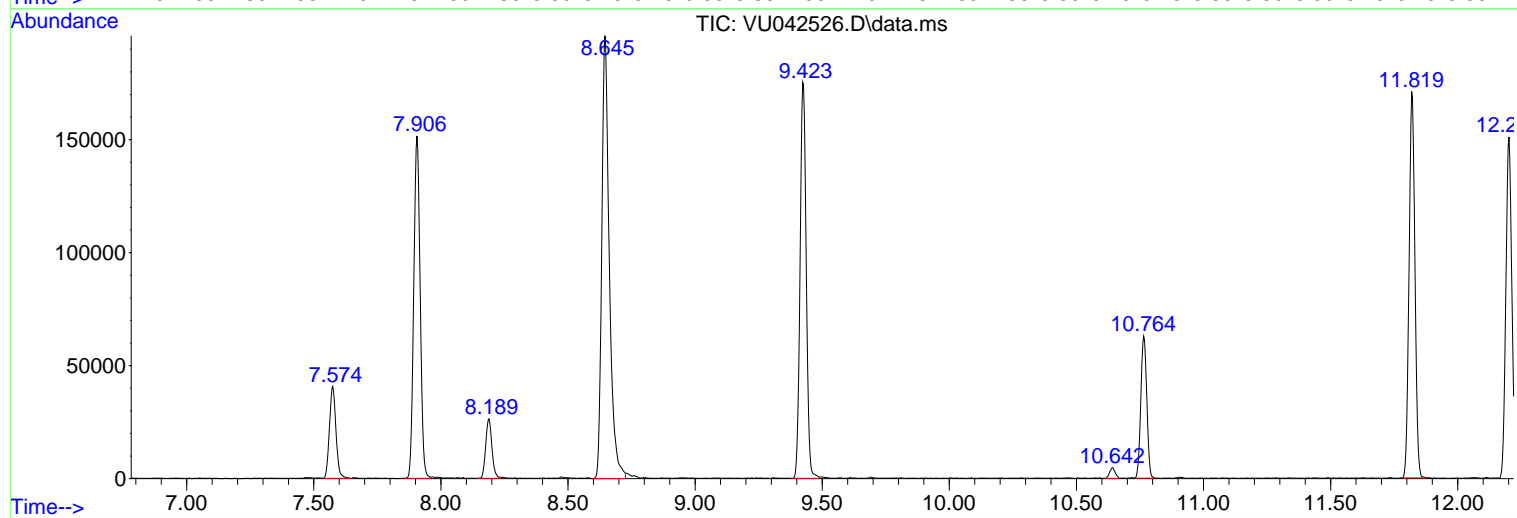
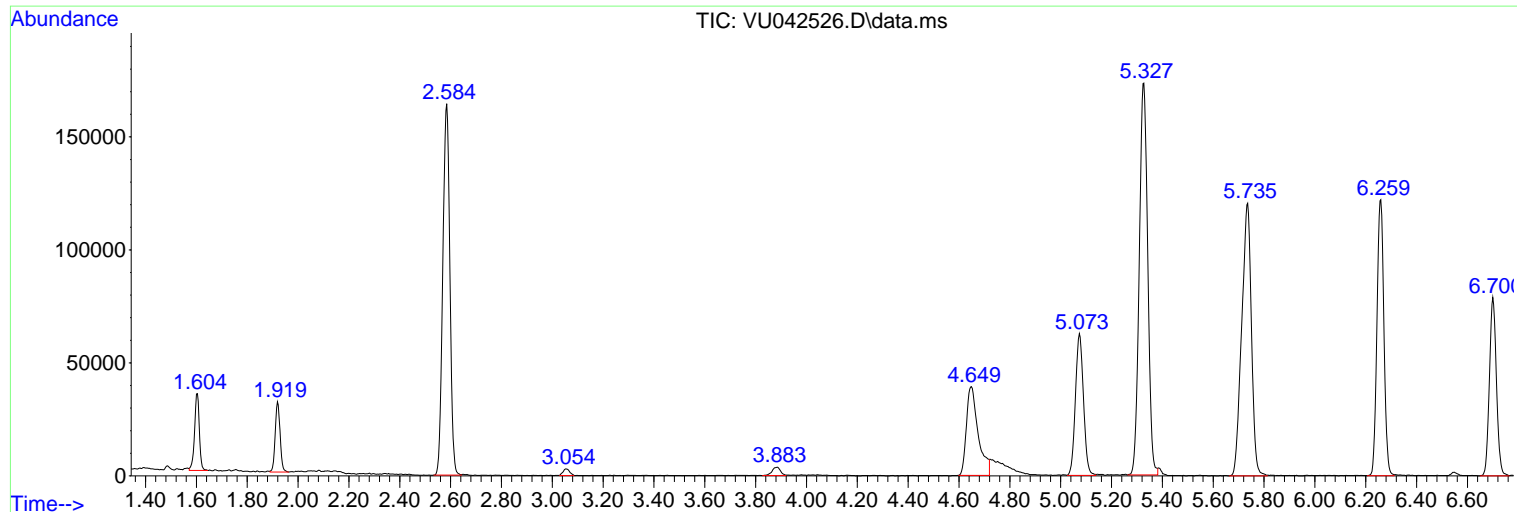
Sum of corrected areas: 3484298

Data Path : Z:\voasrv\HPCHEM1\MSVOA\_U\Data\VU030821\  
Data File : VU042526.D  
Acq On : 08 Mar 2021 14:05  
Operator : SY/MD  
Sample : M1588-01DL 20X  
Misc : 25.0mL/MSVOA\_U/WATER  
ALS Vial : 13 Sample Multiplier: 1

Instrument :  
MSVOA\_U  
ClientSampled :  
C03S5DL

Quant Method : Z:\voasrv\HPCHEM1\MSVOA\_U\Method\SOMUTR030221WMA.M  
Quant Title : TRACE VOA SOM01.0

TIC Library : C:\DATABASE\NIST11.L  
TIC Integration Parameters: LSCINT.P



Data Path : Z:\voasrv\HPCHEM1\MSVOA\_U\Data\VU030821\  
Data File : VU042526.D  
Acq On : 08 Mar 2021 14:05  
Operator : SY/MD  
Sample : M1588-01DL 20X  
Misc : 25.0mL/MSVOA\_U/WATER  
ALS Vial : 13 Sample Multiplier: 1

Instrument :  
MSVOA\_U  
ClientSampleId :  
C03S5DL

Quant Method : Z:\voasrv\HPCHEM1\MSVOA\_U\Method\SOMUTR030221WMA.M  
Quant Title : TRACE VOA SOM01.0

TIC Library : C:\DATABASE\NIST11.L  
TIC Integration Parameters: LSCINT.P

No Library Search Compounds Detected

\*\*\*\*\*

Data Path : Z:\voasrv\HPCHEM1\MSVOA\_U\Data\VU030821\  
Data File : VU042526.D  
Acq On : 08 Mar 2021 14:05  
Operator : SY/MD  
Sample : M1588-01DL 20X  
Misc : 25.0mL/MSVOA\_U/WATER  
ALS Vial : 13 Sample Multiplier: 1

Instrument :  
MSVOA\_U  
ClientSampled :  
C03S5DL

Quant Method : Z:\voasrv\HPCHEM1\MSVOA\_U\Method\SOMUTR030221WMA.M  
Quant Title : TRACE VOA SOM01.0

TIC Library : C:\DATABASE\NIST11.L  
TIC Integration Parameters: LSCINT.P

TIC Top Hit name	RT	EstConc	Units	Response	--Internal Standard--		
					#	RT	Resp Conc

---