

Data Path : Z:\VOASRV\HPCHEM1\MSVOA_U\DATA\VU031120\
 Data File : VU037158.D
 Acq On : 10 Mar 2020 18:21
 Operator : JC/MD
 Sample : VSTDICV005
 Misc : 25.0mL/MSVOA_U/WATER
 ALS Vial : 8 Sample Multiplier: 1

Instrument :
 MSVOA_U
 ClientSampleId :
 VICV04

Quant Time: Mar 11 09:10:18 2020
 Quant Method : Z:\VOASRV\HPCHEM1\MSVOA_U\METHOD\SOMUTR031120WMA.M
 Quant Title : TRACE VOA SOM01.0
 QLast Update : Wed Mar 11 08:55:43 2020
 Response via : Initial Calibration

Internal Standards	R.T.	QIon	Response	Conc	Units	Dev(Min)
1) 1,4-Difluorobenzene	6.28	114	131467	5.00	ug/L	0.00
28) Chlorobenzene-d5	9.44	117	129901	5.00	ug/L	0.00
60) 1,4-Dichlorobenzene-d4	11.83	152	63284	5.00	ug/L	0.00

System Monitoring Compounds

4) Vinyl Chloride-d3	1.61	65	42685	4.94	ug/L	0.00
Spiked Amount	5.000	Range	40 - 130	Recovery	=	98.80%
7) Chloroethane-d5	1.93	69	31064	5.09	ug/L	0.00
Spiked Amount	5.000	Range	65 - 130	Recovery	=	101.80%
11) 1,1-Dichloroethene-d2	2.59	63	90331	5.08	ug/L	0.00
Spiked Amount	5.000	Range	60 - 125	Recovery	=	101.60%
20) 2-Butanone-d5	4.69	46	108653	49.20	ug/L	0.00
Spiked Amount	50.000	Range	40 - 130	Recovery	=	98.40%
24) Chloroform-d	5.11	84	89978	5.10	ug/L	0.00
Spiked Amount	5.000	Range	70 - 125	Recovery	=	102.00%
26) 1,2-Dichloroethane-d4	5.74	65	49327	4.81	ug/L	0.00
Spiked Amount	5.000	Range	70 - 130	Recovery	=	96.20%
32) Benzene-d6	5.76	84	158688	4.97	ug/L	0.00
Spiked Amount	5.000	Range	70 - 125	Recovery	=	99.40%
36) 1,2-Dichloropropane-d6	6.73	67	50532	4.89	ug/L	0.00
Spiked Amount	5.000	Range	60 - 140	Recovery	=	97.80%
41) Toluene-d8	7.92	98	151484	5.06	ug/L	0.00
Spiked Amount	5.000	Range	70 - 130	Recovery	=	101.20%
43) trans-1,3-Dichloropropene-	8.20	79	21672	5.20	ug/L	0.00
Spiked Amount	5.000	Range	55 - 130	Recovery	=	104.00%
46) 2-Hexanone-d5	8.66	63	91339	52.63	ug/L	0.00
Spiked Amount	50.000	Range	45 - 130	Recovery	=	105.26%
57) 1,1,2,2-Tetrachloroethane-	10.78	84	41711	4.91	ug/L	0.00
Spiked Amount	5.000	Range	65 - 120	Recovery	=	98.20%
64) 1,2-Dichlorobenzene-d4	12.21	152	55329	5.06	ug/L	0.00
Spiked Amount	5.000	Range	80 - 120	Recovery	=	101.20%

Target Compounds

Target Compounds	R.T.	QIon	Response	Conc	Units	Qvalue
2) Dichlorodifluoromethane	1.39	85	82761	4.889	ug/L	99
3) Chloromethane	1.53	50	68157	4.719	ug/L	99
5) Vinyl chloride	1.61	62	62713	4.848	ug/L	94
6) Bromomethane	1.87	94	28870	5.939	ug/L	99
8) Chloroethane	1.95	64	32557	4.911	ug/L	96
9) Trichlorofluoromethane	2.15	101	89383	4.869	ug/L	99
10) 1,1,2-Trichloro-1,2,2-trif	2.60	101	49260	5.192	ug/L	97
12) 1,1-Dichloroethene	2.60	96	43224	5.037	ug/L	93
13) Acetone	2.68	43	87989	48.626	ug/L	100
14) Carbon disulfide	2.82	76	141693	4.977	ug/L	100
15) Methyl Acetate	2.99	43	20189	4.768	ug/L	97
16) Methylene chloride	3.08	84	49471	4.801	ug/L	98
17) Methyl tert-butyl Ether	3.41	73	116671	5.061	ug/L	100
18) trans-1,2-Dichloroethene	3.38	96	47753	5.263	ug/L	97
19) 1,1-Dichloroethane	3.91	63	92773	5.051	ug/L	96
21) 2-Butanone	4.77	43	143466	50.366	ug/L	100
22) cis-1,2-Dichloroethene	4.71	96	50597	5.067	ug/L	94

Data Path : Z:\VOASRV\HPCHEM1\MSVOA_U\DATA\VU031120\
 Data File : VU037158.D
 Acq On : 10 Mar 2020 18:21
 Operator : JC/MD
 Sample : VSTDICV005
 Misc : 25.0mL/MSVOA_U/WATER
 ALS Vial : 8 Sample Multiplier: 1

Instrument :
 MSVOA_U
 ClientSampled :
 VICV04

Quant Time: Mar 11 09:10:18 2020
 Quant Method : Z:\VOASRV\HPCHEM1\MSVOA_U\METHOD\SOMUTR031120WMA.M
 Quant Title : TRACE VOA SOM01.0
 QLast Update : Wed Mar 11 08:55:43 2020
 Response via : Initial Calibration

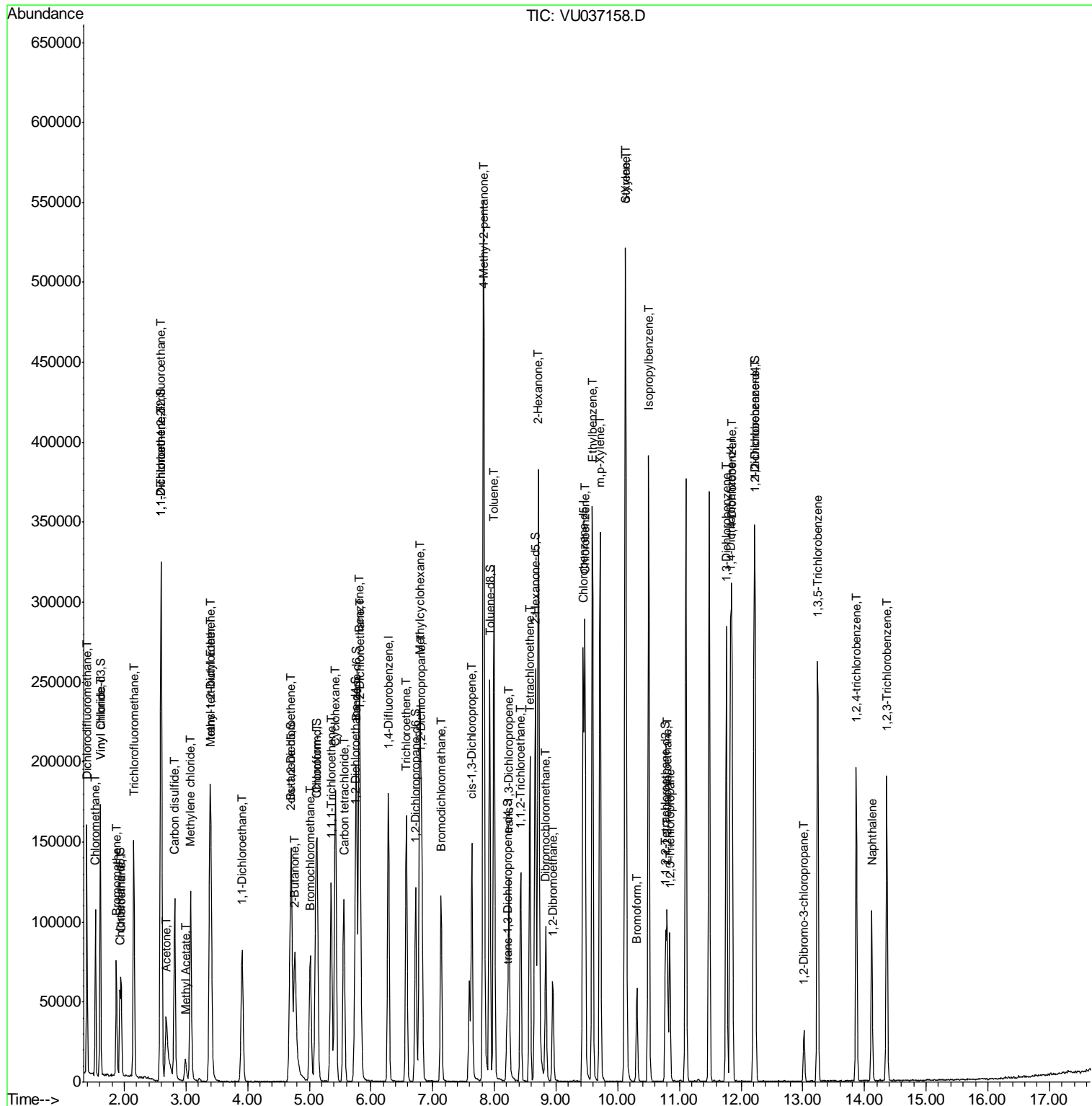
Internal Standards	R.T.	QIon	Response	Conc	Units	Dev(Min)
23) Bromochloromethane	5.02	128	22974	5.249	ug/L	93
25) Chloroform	5.13	83	100388	5.010	ug/L	100
27) 1,2-Dichloroethane	5.83	62	69254	4.959	ug/L	98
29) 1,1,1-Trichloroethane	5.35	97	85002	5.109	ug/L	99
30) Cyclohexane	5.42	56	83311	5.177	ug/L	98
31) Carbon tetrachloride	5.56	117	75391	5.231	ug/L	98
33) Benzene	5.81	78	202928	5.283	ug/L	100
34) Trichloroethene	6.57	95	53965	5.203	ug/L	95
35) Methylcyclohexane	6.79	83	82588	5.151	ug/L	99
37) 1,2-Dichloropropane	6.82	63	53547	5.298	ug/L	99
38) Bromodichloromethane	7.14	83	71201	5.310	ug/L	99
39) cis-1,3-Dichloropropene	7.64	75	75186	5.182	ug/L	96
40) 4-Methyl-2-pentanone	7.83	43	376156	52.596	ug/L	100
42) Toluene	8.00	91	216716	5.256	ug/L	99
44) trans-1,3-Dichloropropene	8.24	75	63256	5.227	ug/L	98
45) 1,1,2-Trichloroethane	8.43	97	37387	5.127	ug/L	98
47) Tetrachloroethene	8.57	164	39338	4.877	ug/L	98
48) 2-Hexanone	8.71	43	272623	54.675	ug/L	99
49) Dibromochloromethane	8.83	129	46745	5.323	ug/L	98
50) 1,2-Dibromoethane	8.95	107	36363	5.259	ug/L #	94
51) Chlorobenzene	9.47	112	132831	5.004	ug/L	99
52) Ethylbenzene	9.59	91	242110	5.310	ug/L	99
53) m,p-Xylene	9.71	106	88916	5.425	ug/L	95
54) o-Xylene	10.12	106	87188	5.456	ug/L	95
55) Styrene	10.13	104	145197	5.540	ug/L	96
56) Isopropylbenzene	10.50	105	232059	5.411	ug/L	99
58) 1,1,2,2-Tetrachloroethane	10.80	83	48101	5.342	ug/L	96
59) 1,2,3-Trichloropropane	10.84	75	35142	4.859	ug/L	95
61) Bromoform	10.31	173	23670	4.902	ug/L	98
62) 1,3-Dichlorobenzene	11.76	146	104687	5.048	ug/L	98
63) 1,4-Dichlorobenzene	11.85	146	102695	4.986	ug/L	97
65) 1,2-Dichlorobenzene	12.23	146	99739	5.073	ug/L	98
66) 1,2-Dibromo-3-chloropropan	13.02	75	7605	5.038	ug/L	97
67) 1,3,5-Trichlorobenzene	13.24	180	73236	5.159	ug/L	98
68) 1,2,4-trichlorobenzene	13.87	180	51452	5.345	ug/L	100
69) Naphthalene	14.12	128	76785	5.584	ug/L	99
70) 1,2,3-Trichlorobenzene	14.36	180	51090	5.656	ug/L	99

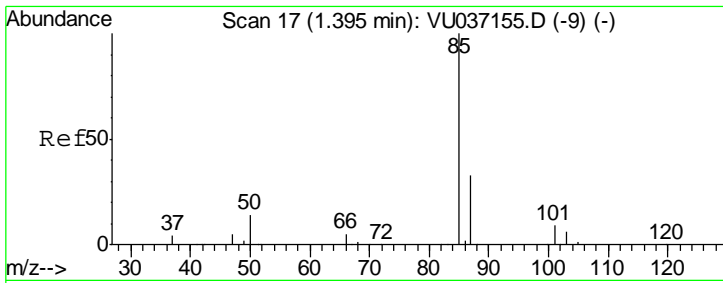
(#) = qualifier out of range (m) = manual integration (+) = signals summed

Data Path : Z:\VOASRV\HPCHEM1\MSVOA_U\DATA\VU031120\
 Data File : VU037158.D
 Acq On : 10 Mar 2020 18:21
 Operator : JC/MD
 Sample : VSTDICV005
 Misc : 25.0mL/MSVOA_U/WATER
 ALS Vial : 8 Sample Multiplier: 1

Instrument :
 MSVOA_U
 Client Sampled :
 VICV04

Quant Time: Mar 11 09:10:18 2020
 Quant Method : Z:\VOASRV\HPCHEM1\MSVOA_U\METHOD\SOMUTR031120WMA.M
 Quant Title : TRACE VOA SOM01.0
 QLast Update : Wed Mar 11 08:55:43 2020
 Response via : Initial Calibration

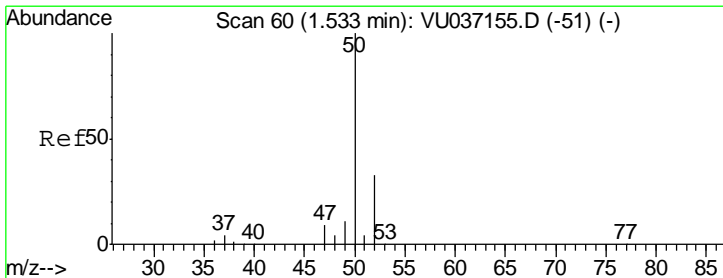
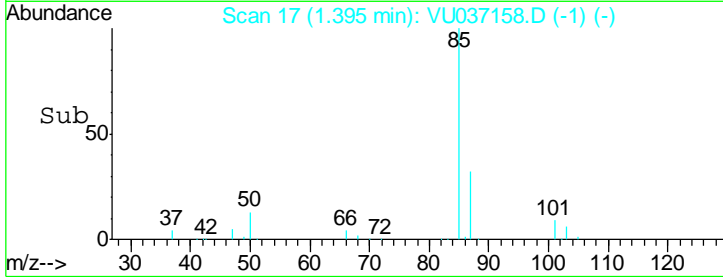
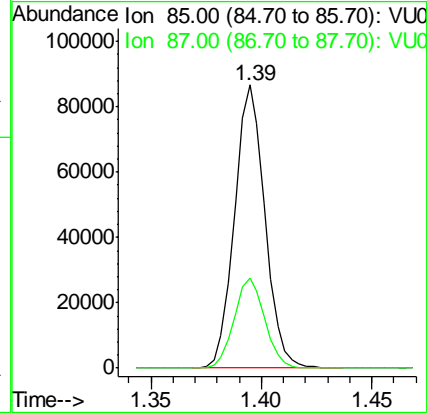
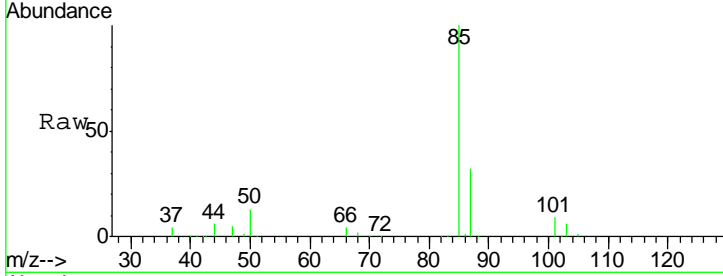




#2
 Dichlorodifluoromethane
 Concen: 4.889 ug/L
 RT: 1.39 min Scan# 17
 Delta R.T. 0.00 min
 Lab File: VU037158.D
 Acq: 10 Mar 2020 18:21

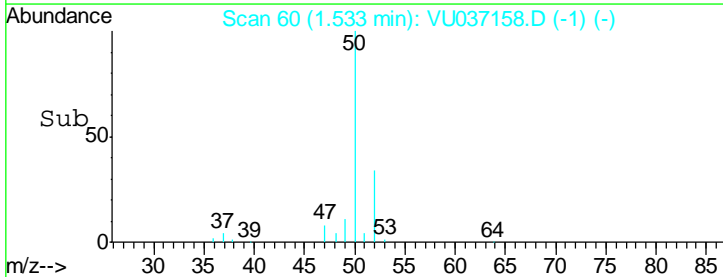
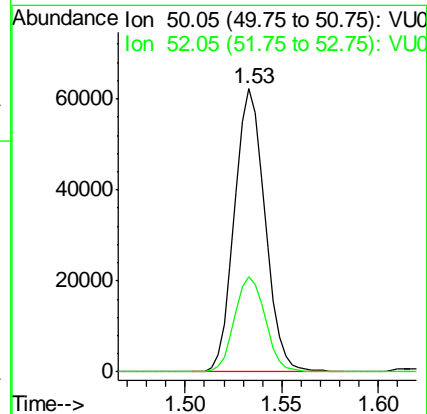
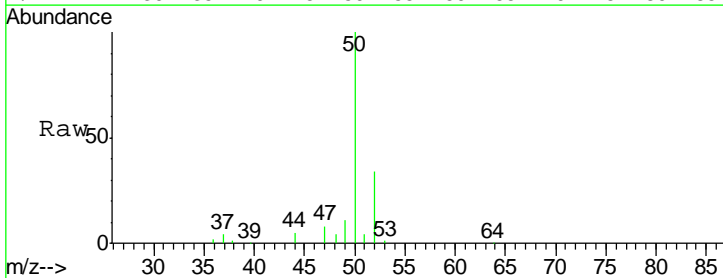
Instrument :
 MSVOA_U
 ClientSampled :
 VICV04

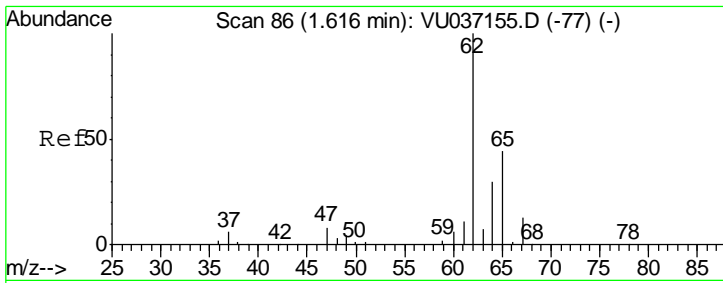
Tgt Ion: 85 Resp: 82761
 Ion Ratio Lower Upper
 85 100
 87 32.3 26.2 39.4



#3
 Chloromethane
 Concen: 4.719 ug/L
 RT: 1.53 min Scan# 60
 Delta R.T. 0.00 min
 Lab File: VU037158.D
 Acq: 10 Mar 2020 18:21

Tgt Ion: 50 Resp: 68157
 Ion Ratio Lower Upper
 50 100
 52 33.7 23.3 43.3

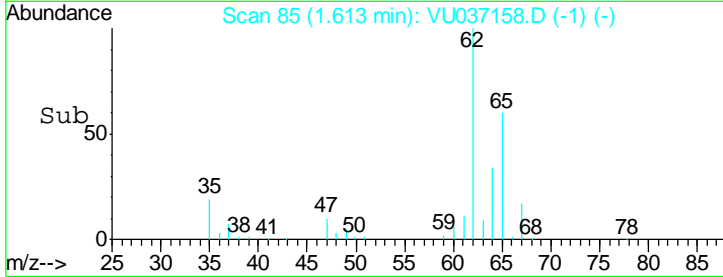
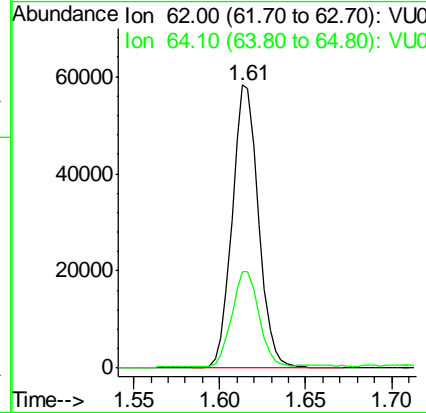
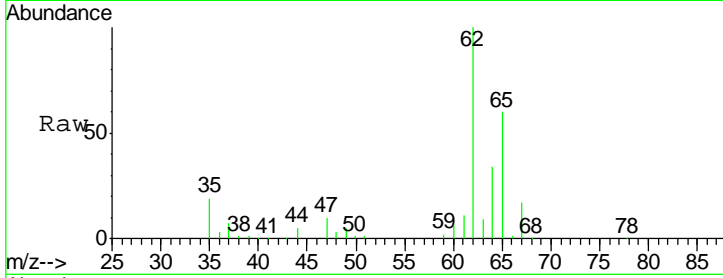




#5
 Vinyl chloride
 Concen: 4.848 ug/L
 RT: 1.61 min Scan# 85
 Delta R.T. -0.00 min
 Lab File: VU037158.D
 Acq: 10 Mar 2020 18:21

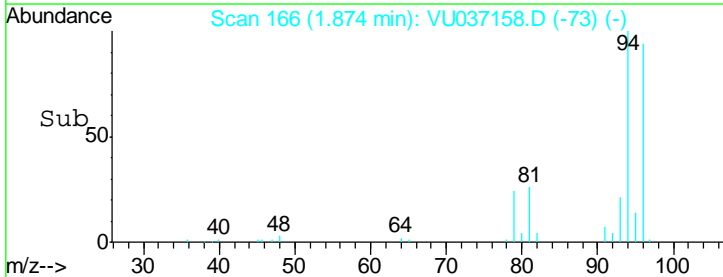
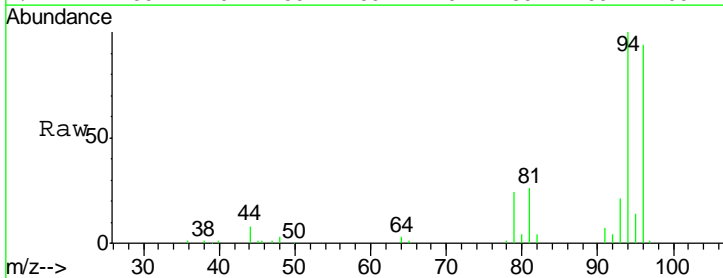
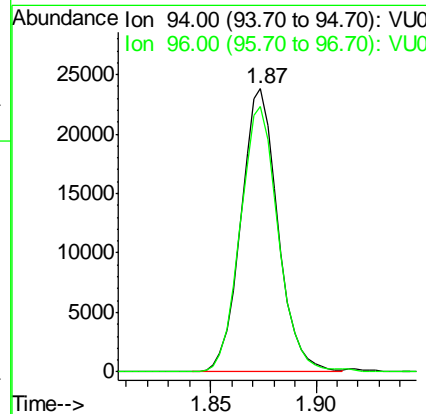
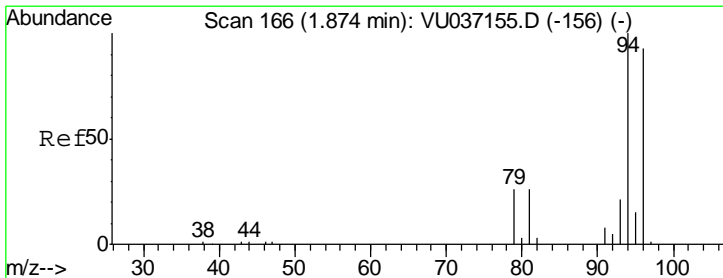
Instrument :
 MSVOA_U
ClientSampled :
 VICV04

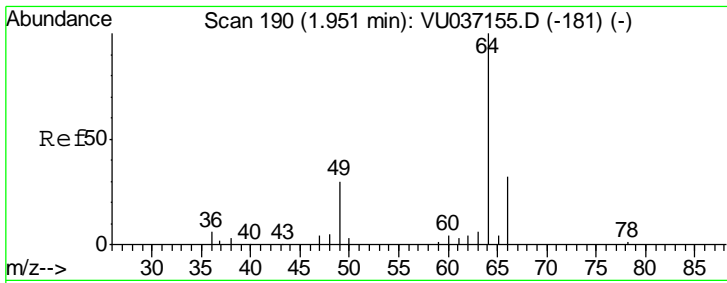
Tgt Ion: 62 Resp: 62713
 Ion Ratio Lower Upper
 62 100
 64 34.1 21.6 40.0



#6
 Bromomethane
 Concen: 5.939 ug/L
 RT: 1.87 min Scan# 166
 Delta R.T. 0.00 min
 Lab File: VU037158.D
 Acq: 10 Mar 2020 18:21

Tgt Ion: 94 Resp: 28870
 Ion Ratio Lower Upper
 94 100
 96 93.9 64.8 120.4

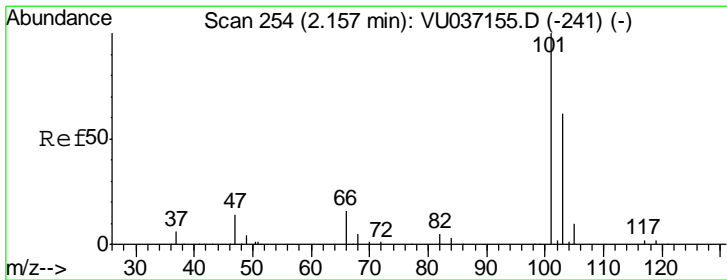
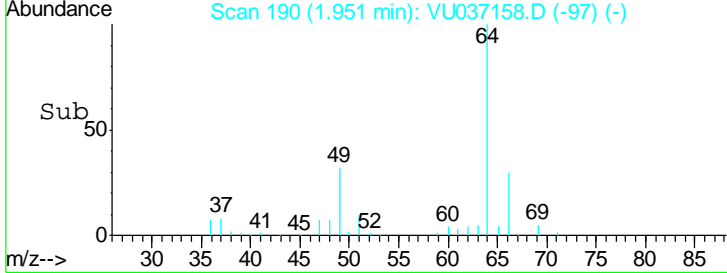
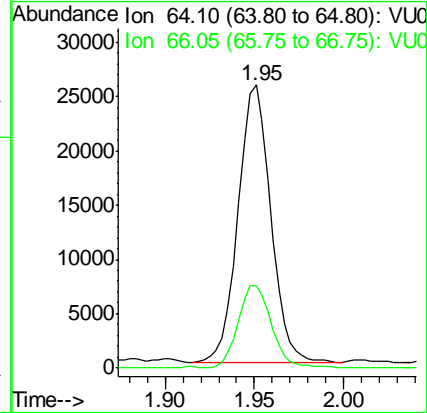
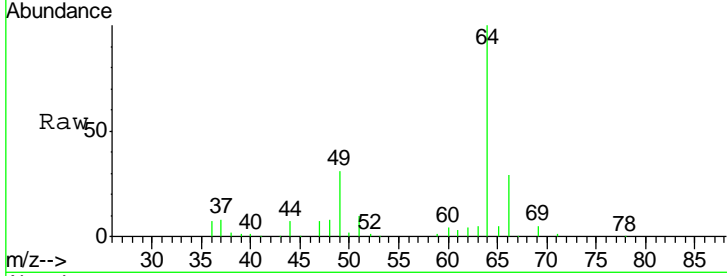




#8
 Chloroethane
 Concen: 4.911 ug/L
 RT: 1.95 min Scan# 190
 Delta R.T. 0.00 min
 Lab File: VU037158.D
 Acq: 10 Mar 2020 18:21

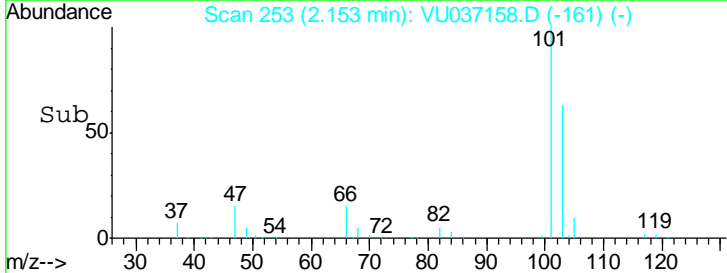
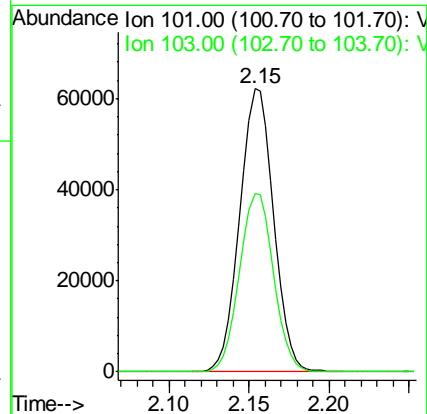
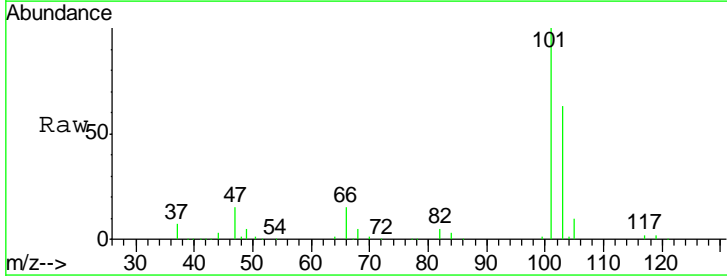
Instrument :
 MSVOA_U
 ClientSampled :
 VICV04

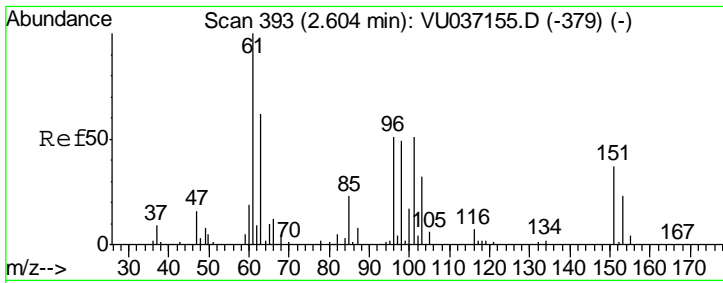
Tgt Ion: 64 Resp: 32557
 Ion Ratio Lower Upper
 64 100
 66 29.2 22.0 40.8



#9
 Trichlorofluoromethane
 Concen: 4.869 ug/L
 RT: 2.15 min Scan# 253
 Delta R.T. -0.00 min
 Lab File: VU037158.D
 Acq: 10 Mar 2020 18:21

Tgt Ion: 101 Resp: 89383
 Ion Ratio Lower Upper
 101 100
 103 63.3 50.2 75.4

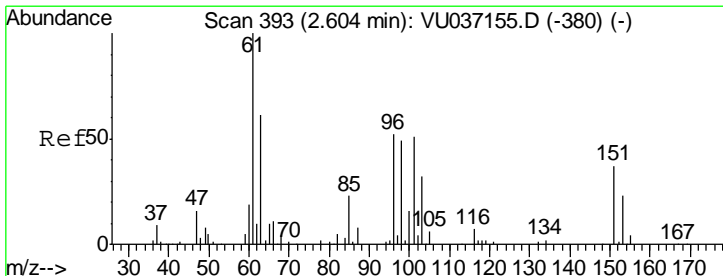
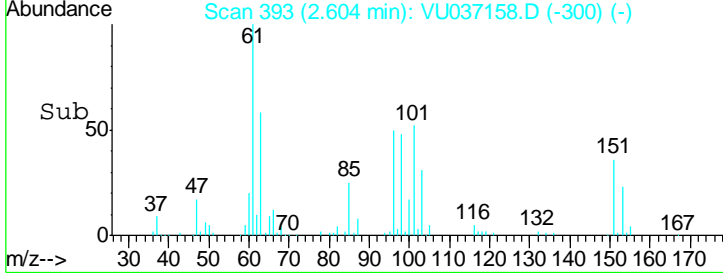
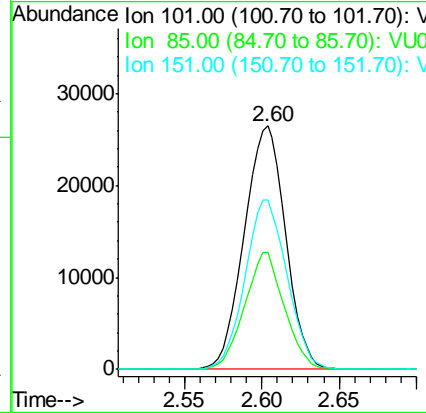
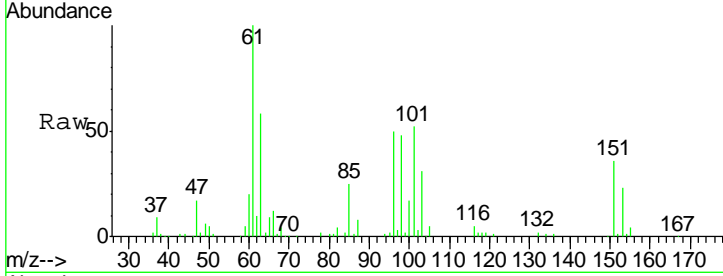




#10
 1,1,2-Trichloro-1,2,2-trifluoroethane
 Concen: 5.192 ug/L
 RT: 2.60 min Scan# 393
 Delta R.T. 0.00 min
 Lab File: VU037158.D
 Acq: 10 Mar 2020 18:21

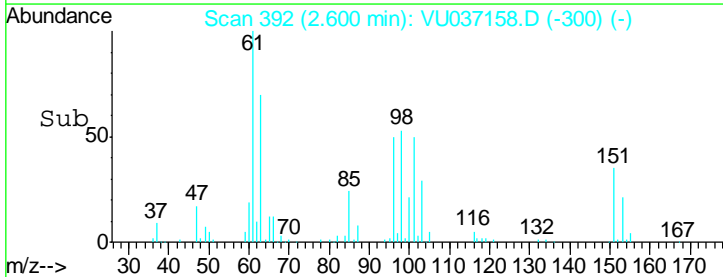
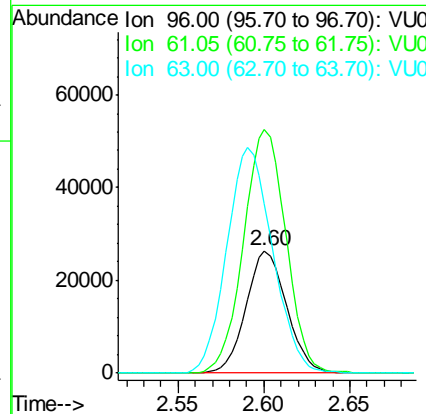
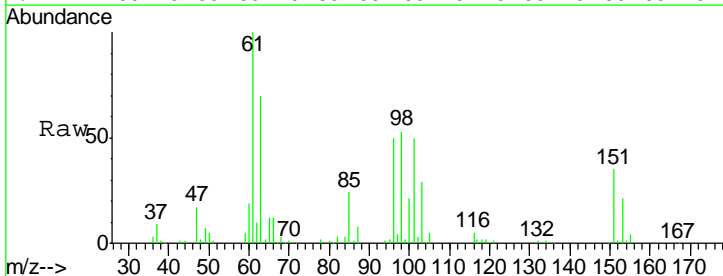
Instrument :
 MSVOA_U
ClientSampled :
 VICV04

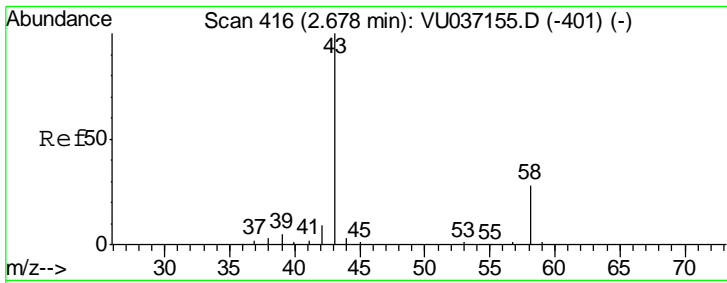
Tgt Ion	Resp	Lower	Upper
101	49260		
85	46.1	37.5	56.3
151	70.5	59.8	89.6



#12
 1,1-Dichloroethene
 Concen: 5.037 ug/L
 RT: 2.60 min Scan# 392
 Delta R.T. -0.00 min
 Lab File: VU037158.D
 Acq: 10 Mar 2020 18:21

Tgt Ion	Resp	Lower	Upper
96	43224		
61	199.4	136.4	253.2
63	138.6	86.2	160.0

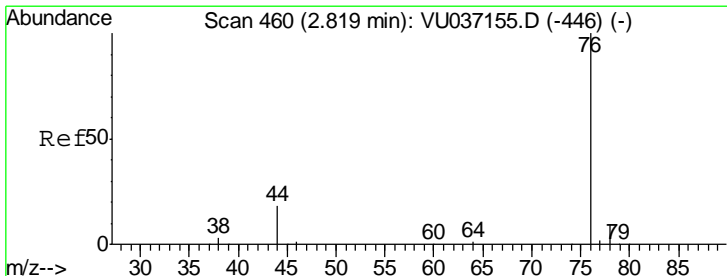
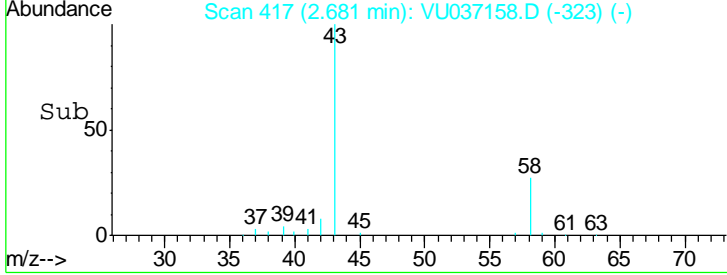
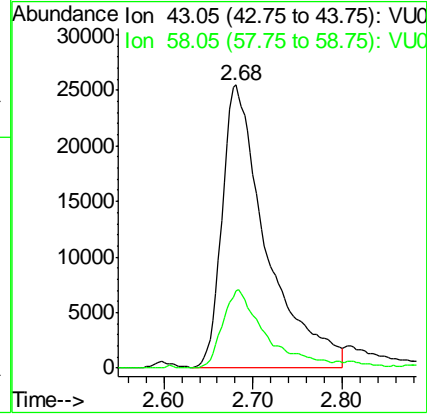
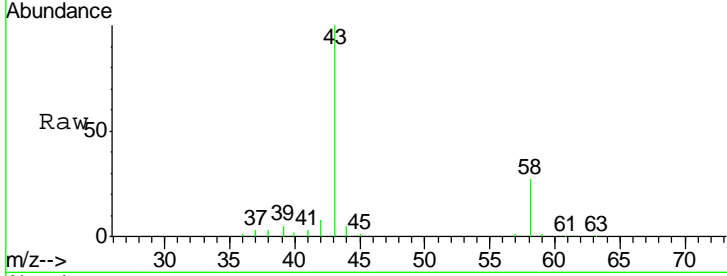




#13
 Acetone
 Concen: 48.626 ug/L
 RT: 2.68 min Scan# 417
 Delta R.T. 0.00 min
 Lab File: VU037158.D
 Acq: 10 Mar 2020 18:21

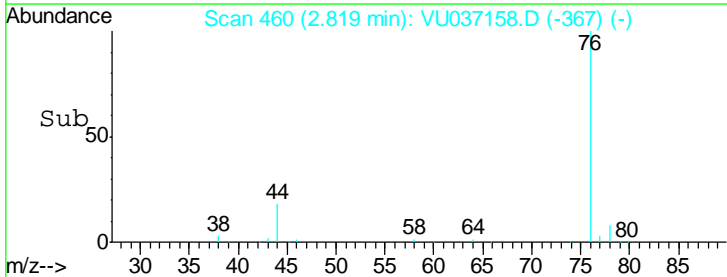
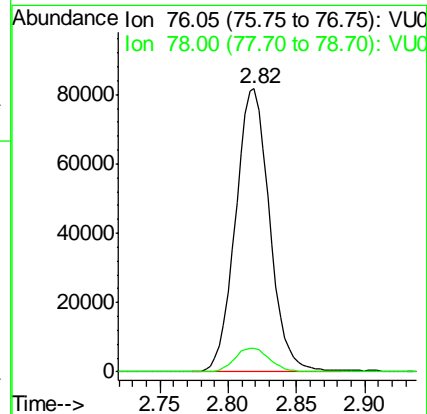
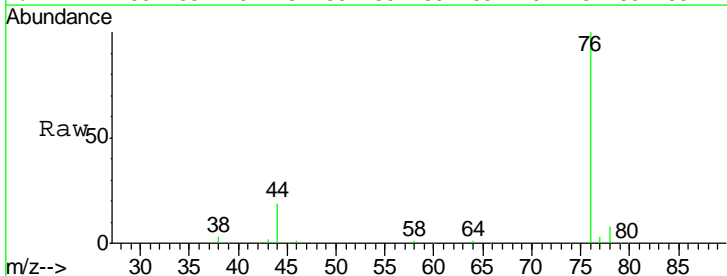
Instrument :
 MSVOA_U
 ClientSampled :
 VICV04

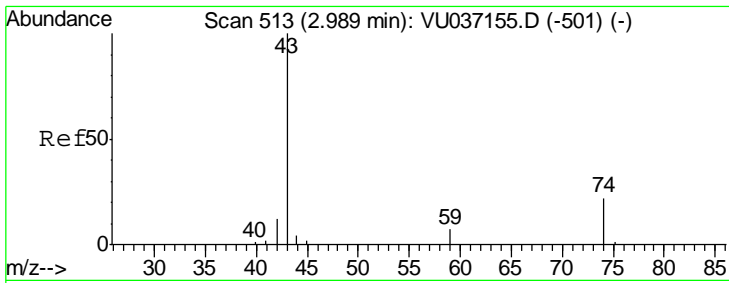
Tgt Ion	Resp	Lower	Upper
43	100		
58	26.1	0.0	52.2



#14
 Carbon disulfide
 Concen: 4.977 ug/L
 RT: 2.82 min Scan# 460
 Delta R.T. 0.00 min
 Lab File: VU037158.D
 Acq: 10 Mar 2020 18:21

Tgt Ion	Resp	Lower	Upper
76	100		
78	8.5	6.9	10.3

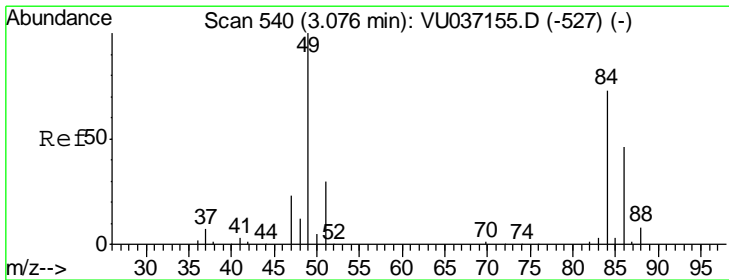
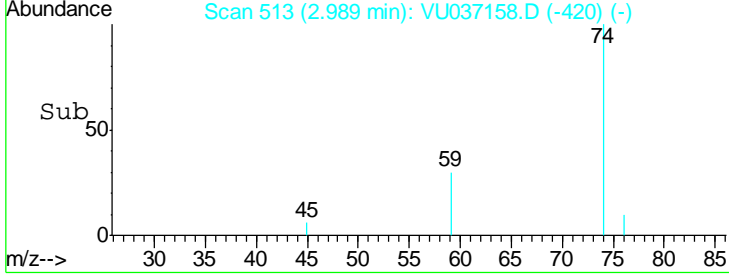
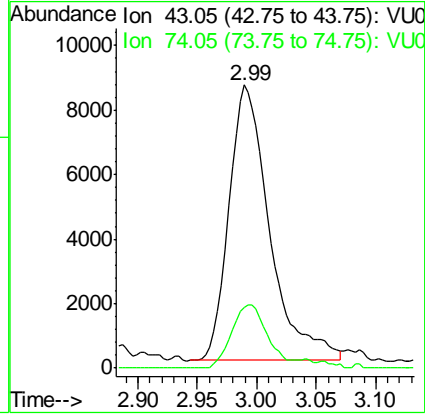
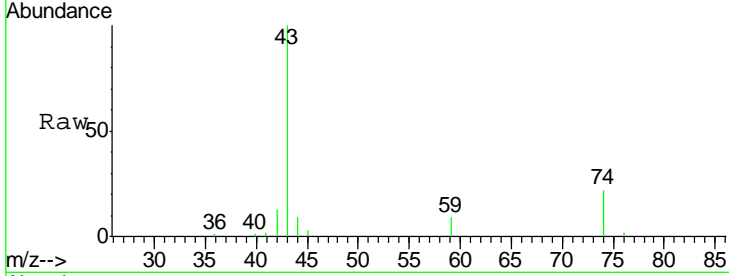




#15
 Methyl Acetate
 Concen: 4.768 ug/L
 RT: 2.99 min Scan# 513
 Delta R.T. 0.00 min
 Lab File: VU037158.D
 Acq: 10 Mar 2020 18:21

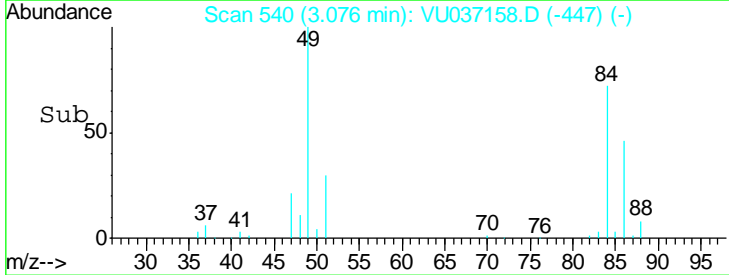
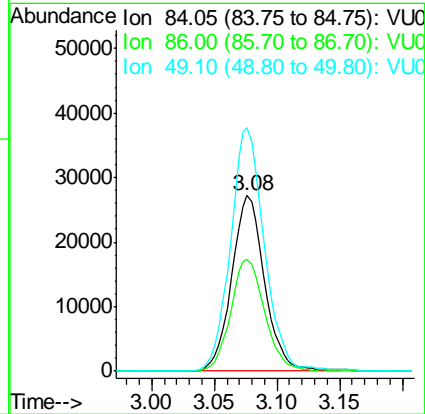
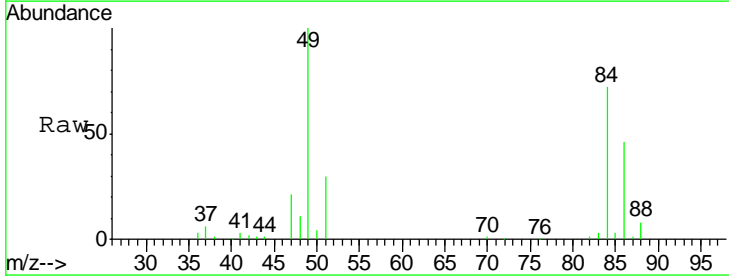
Instrument : MSVOA_U
 ClientSampled : VU037158.D
 VICV04

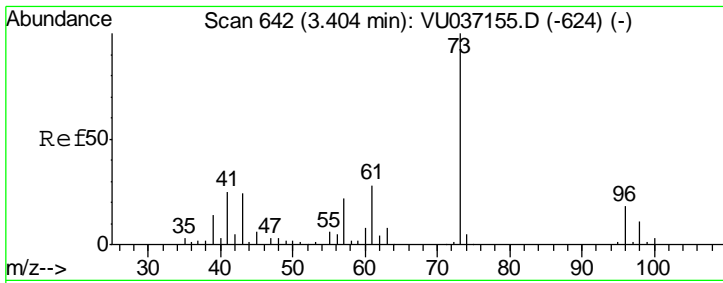
Tgt Ion	Resp	Lower	Upper
43	100		
74	20.1	17.1	25.7



#16
 Methylene chloride
 Concen: 4.801 ug/L
 RT: 3.08 min Scan# 540
 Delta R.T. 0.00 min
 Lab File: VU037158.D
 Acq: 10 Mar 2020 18:21

Tgt Ion	Resp	Lower	Upper
84	100		
86	63.7	44.3	82.3
49	138.9	95.3	177.1

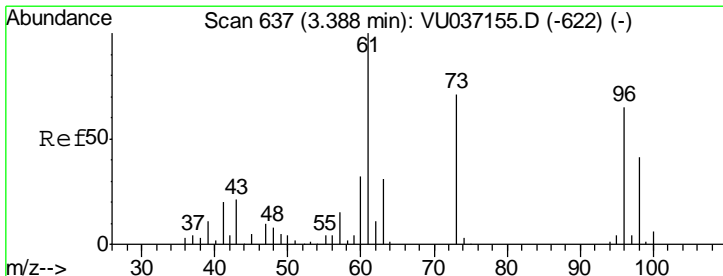
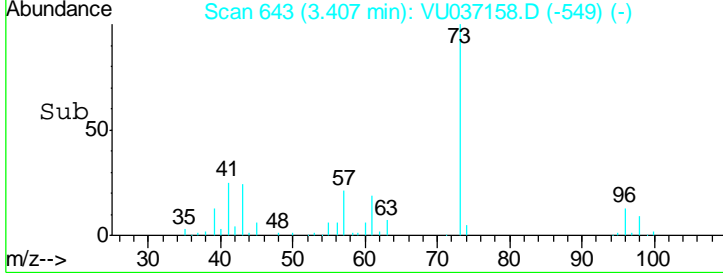
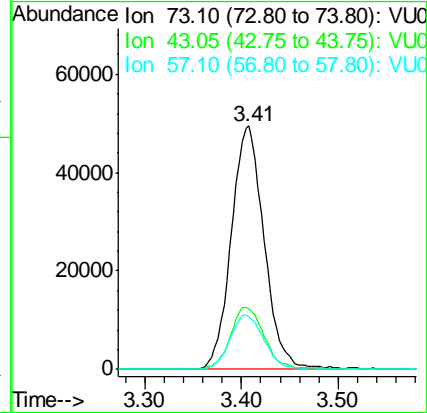
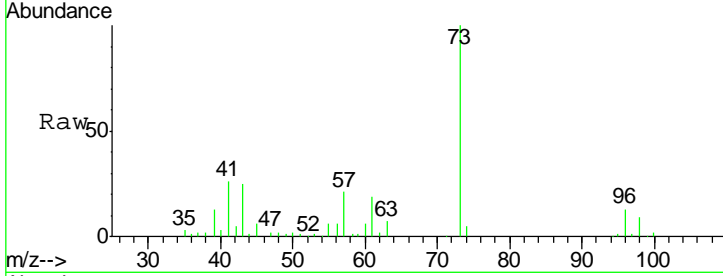




#17
 Methyl tert-butyl Ether
 Concen: 5.061 ug/L
 RT: 3.41 min Scan# 643
 Delta R.T. 0.00 min
 Lab File: VU037158.D
 Acq: 10 Mar 2020 18:21

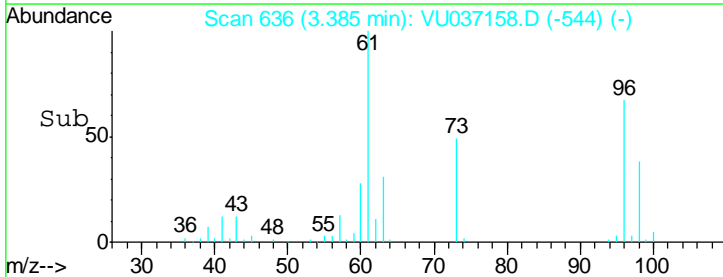
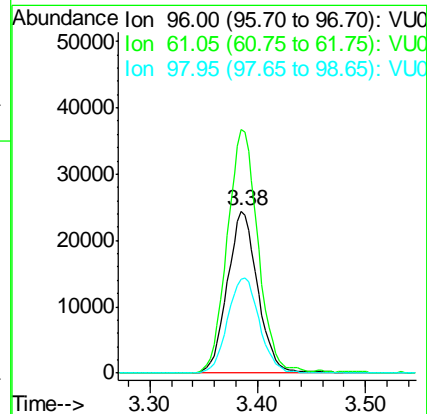
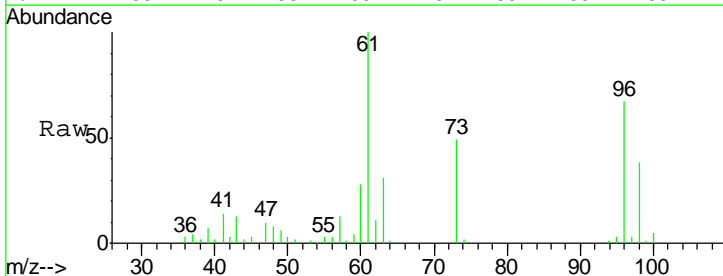
Instrument :
 MSVOA_U
 ClientSampled :
 VICV04

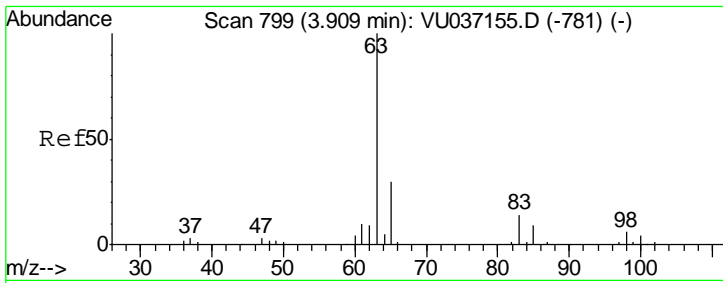
Tgt Ion	Resp	Lower	Upper
73	116671		
43	26.4	21.1	31.7
57	22.9	17.9	26.9



#18
 trans-1,2-Dichloroethene
 Concen: 5.263 ug/L
 RT: 3.38 min Scan# 636
 Delta R.T. -0.00 min
 Lab File: VU037158.D
 Acq: 10 Mar 2020 18:21

Tgt Ion	Resp	Lower	Upper
96	47753		
61	150.3	107.2	199.2
98	57.6	43.6	81.0

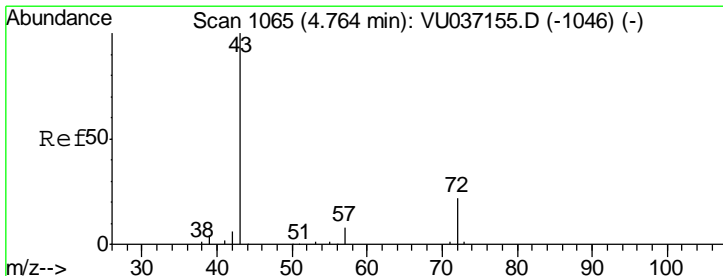
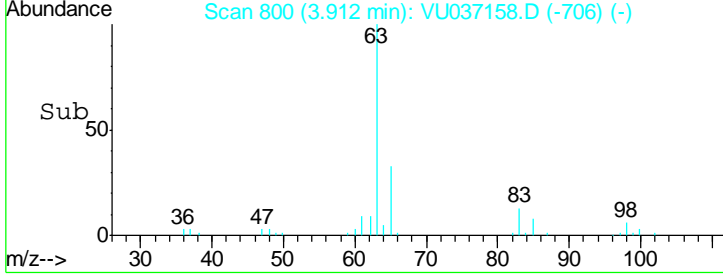
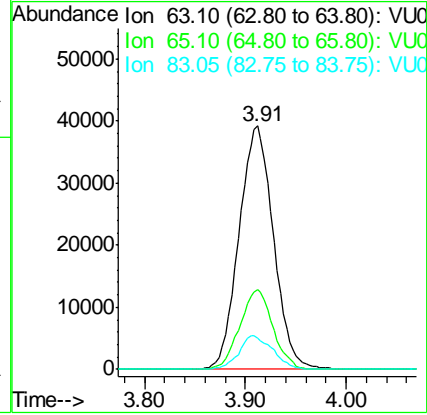
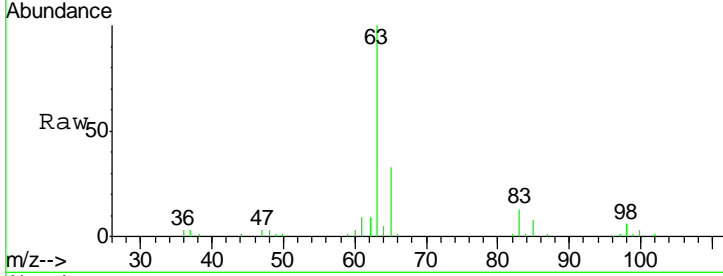




#19
 1,1-Dichloroethane
 Concen: 5.051 ug/L
 RT: 3.91 min Scan# 800
 Delta R.T. 0.00 min
 Lab File: VU037158.D
 Acq: 10 Mar 2020 18:21

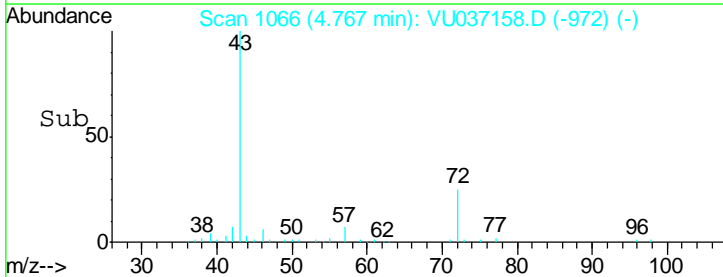
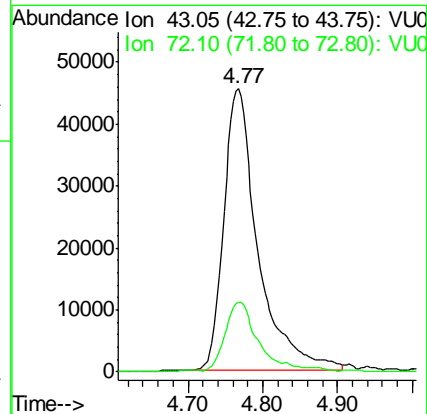
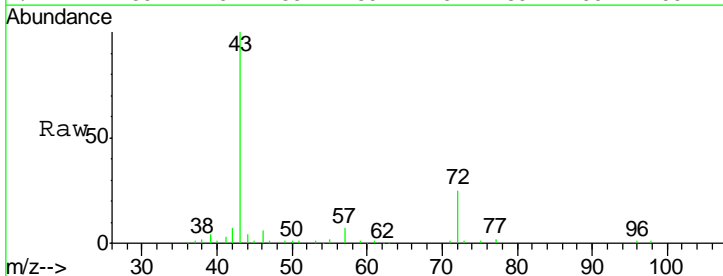
Instrument :
 MSVOA_U
 ClientSampled :
 VICV04

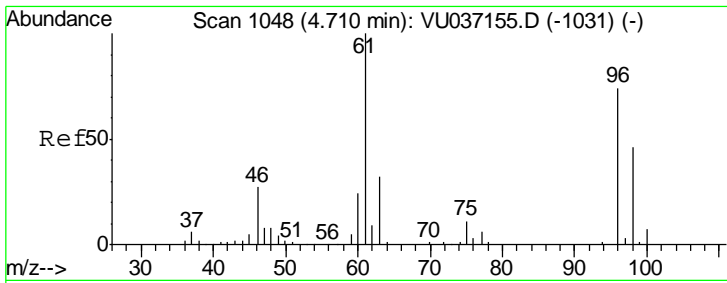
Tgt Ion	Resp	Lower	Upper
63	92773		
65	32.7	21.3	39.5
83	12.9	10.0	18.6



#21
 2-Butanone
 Concen: 50.366 ug/L
 RT: 4.77 min Scan# 1066
 Delta R.T. 0.00 min
 Lab File: VU037158.D
 Acq: 10 Mar 2020 18:21

Tgt Ion	Resp	Lower	Upper
43	143466		
72	23.1	11.6	34.7

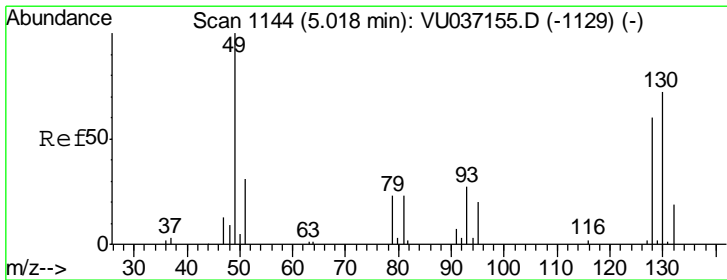
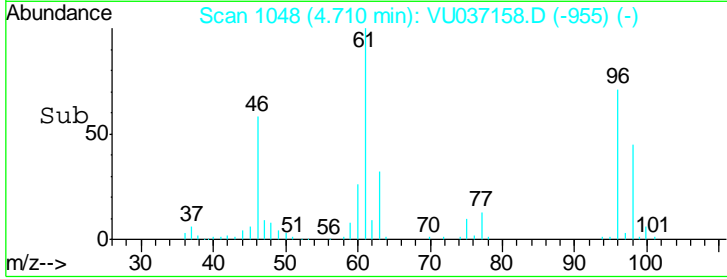
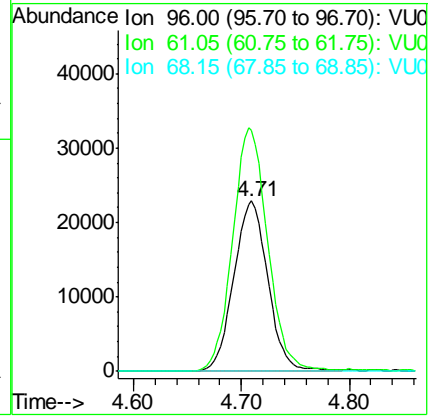
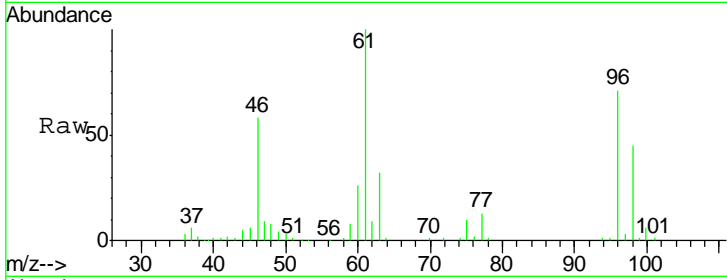




#22
 cis-1,2-Dichloroethene
 Concen: 5.067 ug/L
 RT: 4.71 min Scan# 1048
 Delta R.T. 0.00 min
 Lab File: VU037158.D
 Acq: 10 Mar 2020 18:21

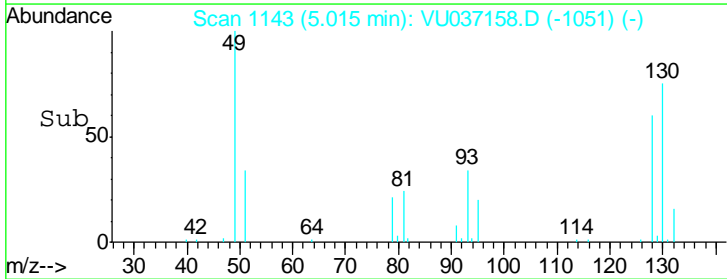
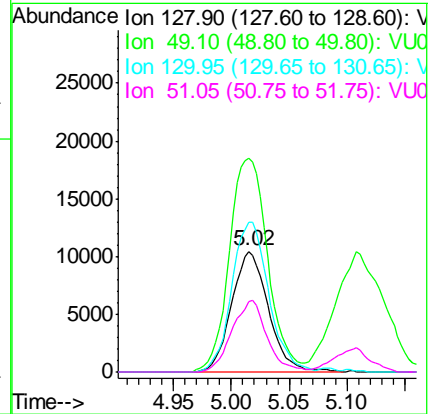
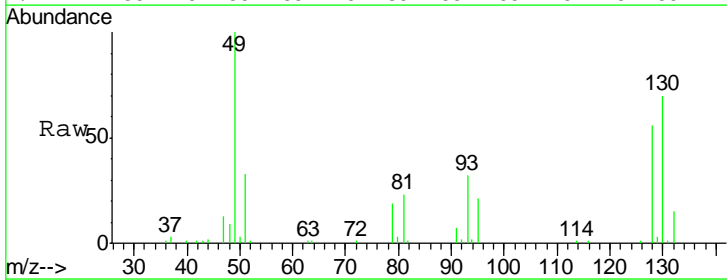
Instrument : MSVOA_U
 ClientSampled : VU037158.D
 VICV04

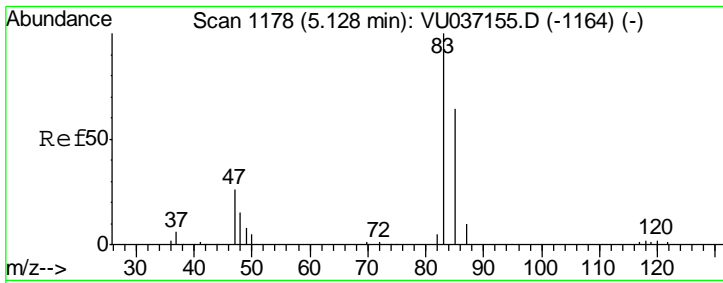
Tgt Ion	Resp	Lower	Upper
96	50597		
61	141.4	94.1	174.8
68	0.0	0.0	0.0



#23
 Bromochloromethane
 Concen: 5.249 ug/L
 RT: 5.02 min Scan# 1143
 Delta R.T. -0.00 min
 Lab File: VU037158.D
 Acq: 10 Mar 2020 18:21

Tgt Ion	Resp	Lower	Upper
128	22974		
49	177.4	115.7	214.9
130	124.0	83.1	154.3
51	58.2	42.5	63.7

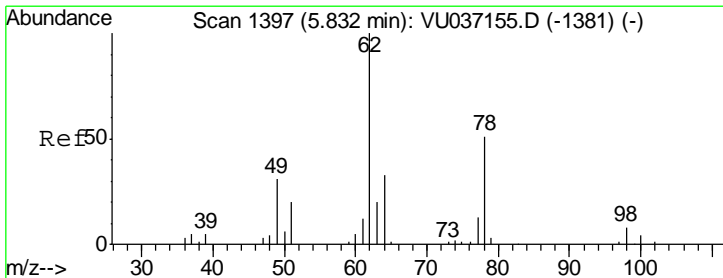
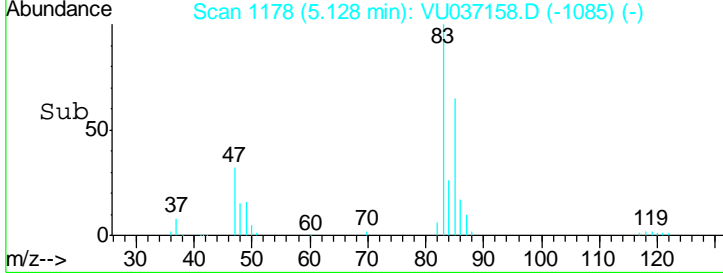
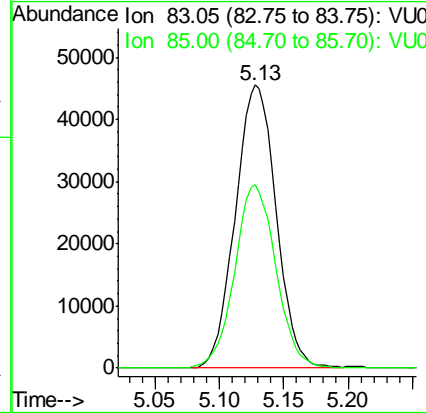
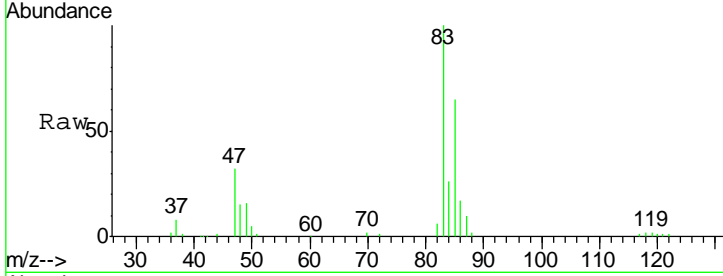




#25
 Chloroform
 Concen: 5.010 ug/L
 RT: 5.13 min Scan# 1178
 Delta R.T. 0.00 min
 Lab File: VU037158.D
 Acq: 10 Mar 2020 18:21

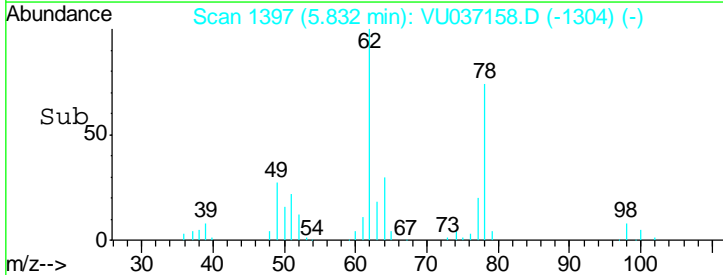
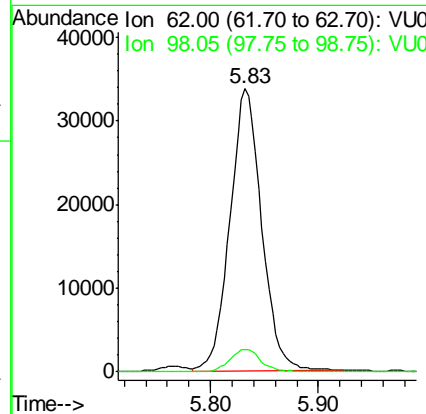
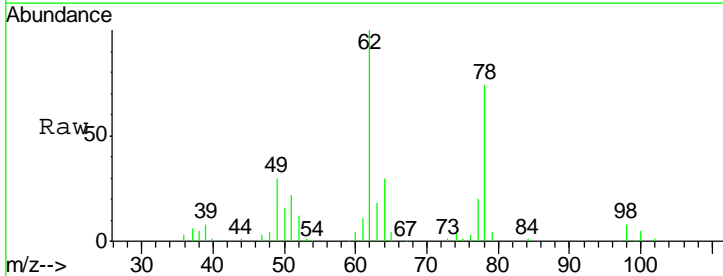
Instrument : MSVOA_U
 ClientSampled : VICV04

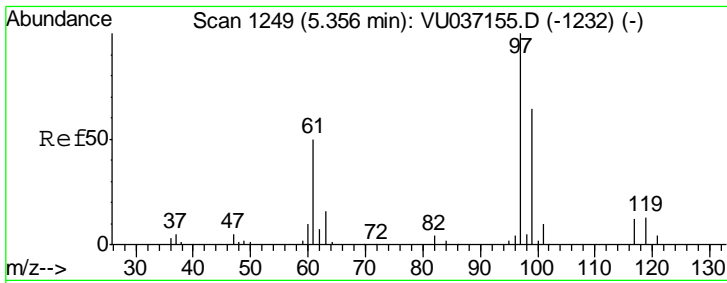
Tgt Ion: 83 Resp: 100388
 Ion Ratio Lower Upper
 83 100
 85 64.6 45.3 84.1



#27
 1,2-Dichloroethane
 Concen: 4.959 ug/L
 RT: 5.83 min Scan# 1397
 Delta R.T. 0.00 min
 Lab File: VU037158.D
 Acq: 10 Mar 2020 18:21

Tgt Ion: 62 Resp: 69254
 Ion Ratio Lower Upper
 62 100
 98 7.9 5.9 8.9

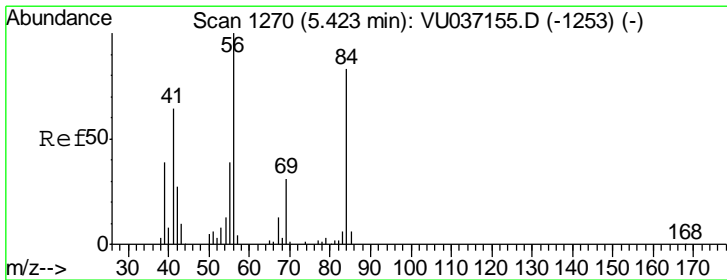
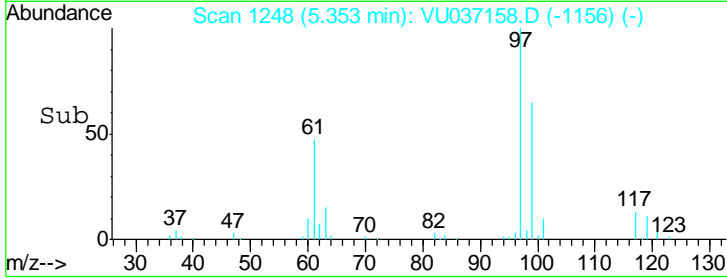
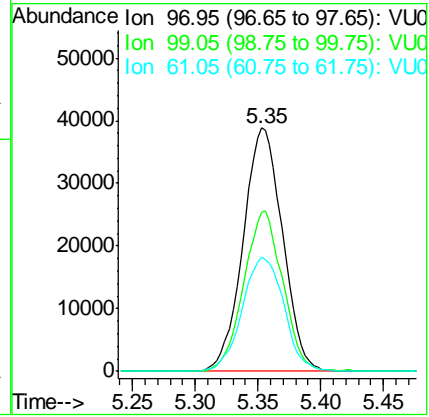
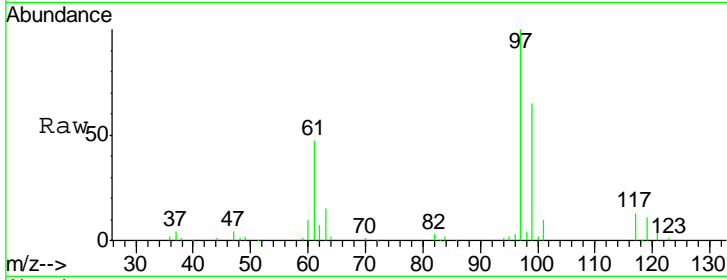




#29
 1,1,1-Trichloroethane
 Concen: 5.109 ug/L
 RT: 5.35 min Scan# 1248
 Delta R.T. -0.00 min
 Lab File: VU037158.D
 Acq: 10 Mar 2020 18:21

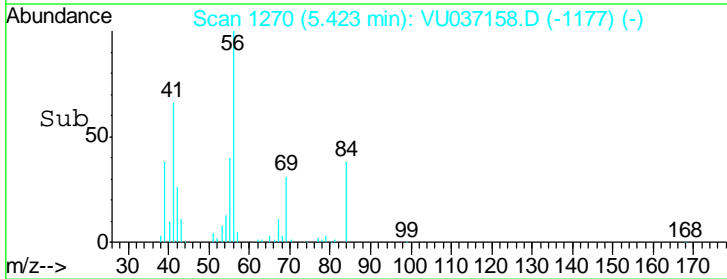
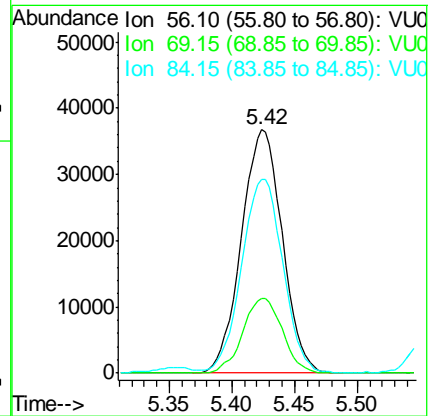
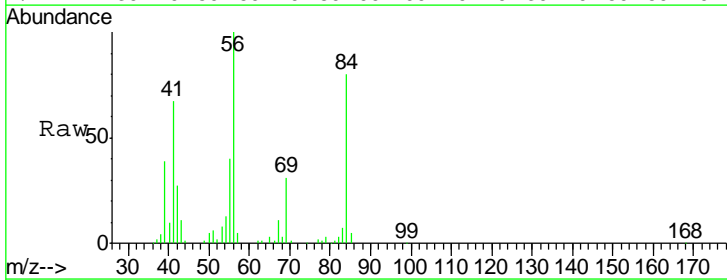
Instrument : MSVOA_U
 ClientSampled : VU037158.D
 VICV04

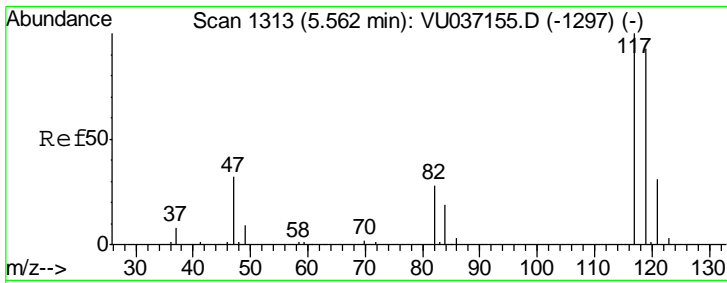
Tgt Ion	Resp	Lower	Upper
97	85002		
99	64.9	52.4	78.6
61	49.4	40.6	61.0



#30
 Cyclohexane
 Concen: 5.177 ug/L
 RT: 5.42 min Scan# 1270
 Delta R.T. 0.00 min
 Lab File: VU037158.D
 Acq: 10 Mar 2020 18:21

Tgt Ion	Resp	Lower	Upper
56	83311		
69	29.6	25.0	37.6
84	80.6	65.4	98.2

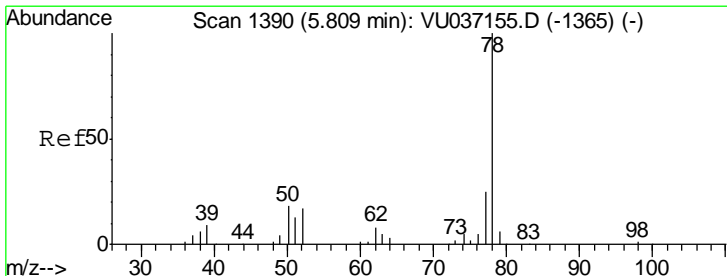
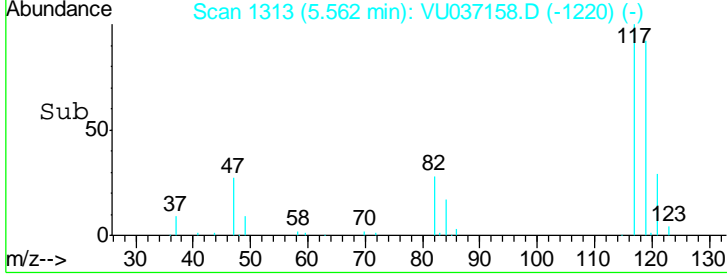
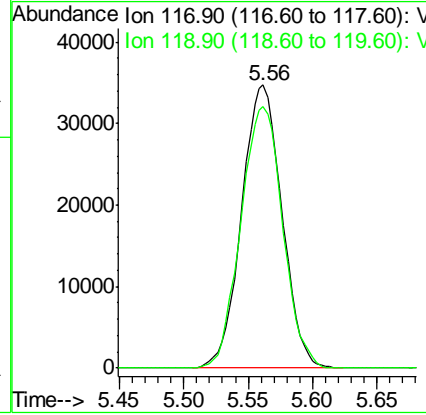
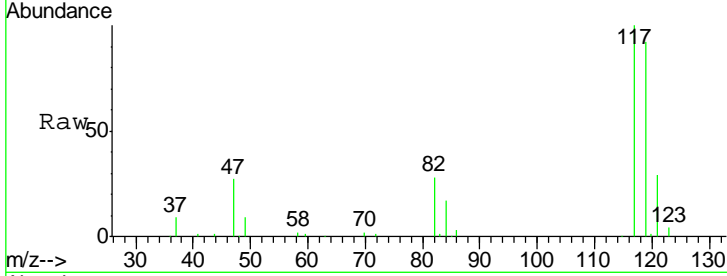




#31
 Carbon tetrachloride
 Concen: 5.231 ug/L
 RT: 5.56 min Scan# 1313
 Delta R.T. 0.00 min
 Lab File: VU037158.D
 Acq: 10 Mar 2020 18:21

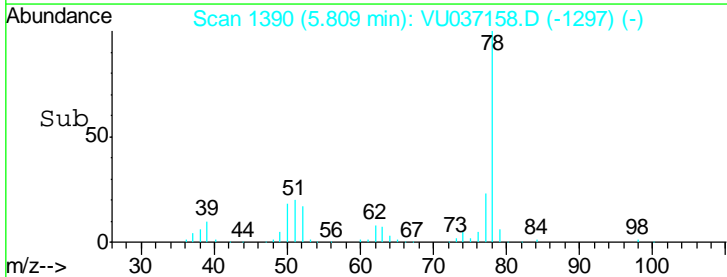
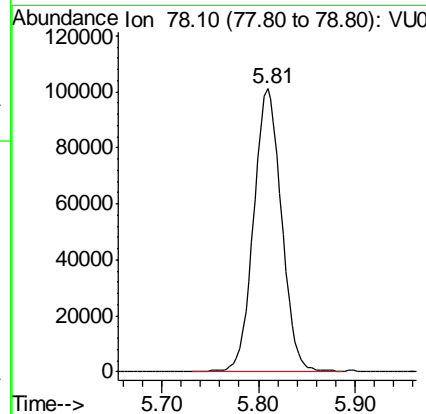
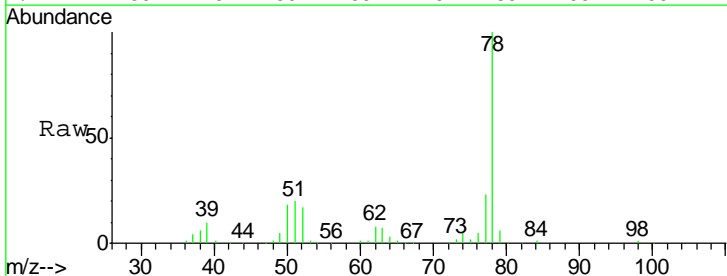
Instrument : MSVOA_U
 ClientSampled : VICV04

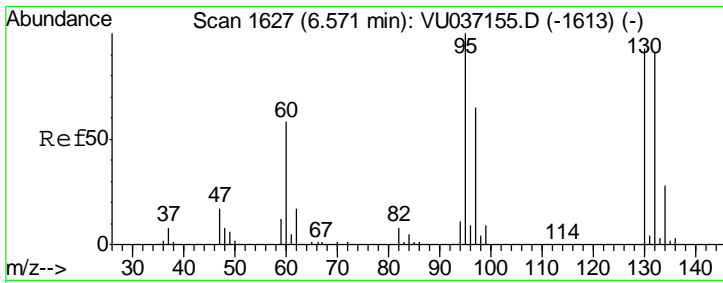
Tgt Ion: 117 Resp: 75391
 Ion Ratio Lower Upper
 117 100
 119 96.0 78.2 117.4



#33
 Benzene
 Concen: 5.283 ug/L
 RT: 5.81 min Scan# 1390
 Delta R.T. 0.00 min
 Lab File: VU037158.D
 Acq: 10 Mar 2020 18:21

Tgt Ion: 78 Resp: 202928

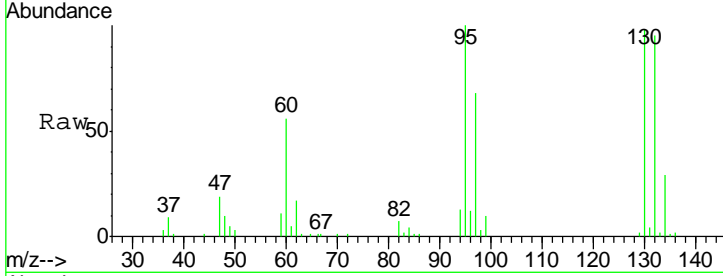




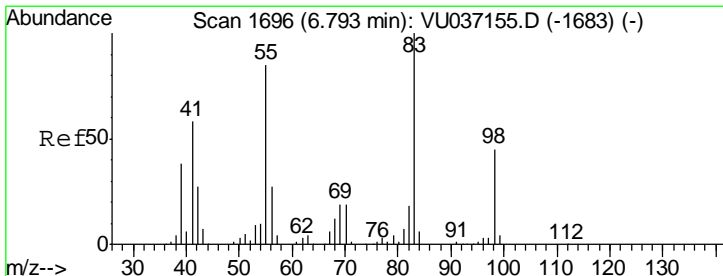
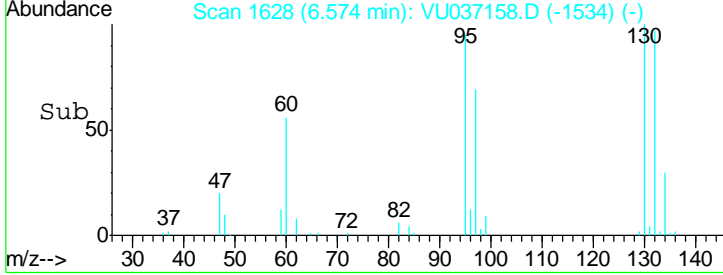
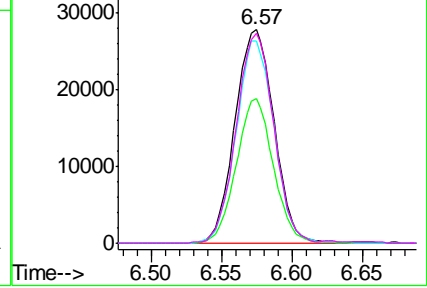
#34
 Trichloroethene
 Concen: 5.203 ug/L
 RT: 6.57 min Scan# 1628
 Delta R.T. 0.00 min
 Lab File: VU037158.D
 Acq: 10 Mar 2020 18:21

Instrument :
 MSVOA_U
 ClientSampled :
 VICV04

Tgt Ion	Resp	Lower	Upper
95	53965		
97	67.5	45.4	84.4
132	95.0	63.7	118.3
130	98.1	64.8	120.4

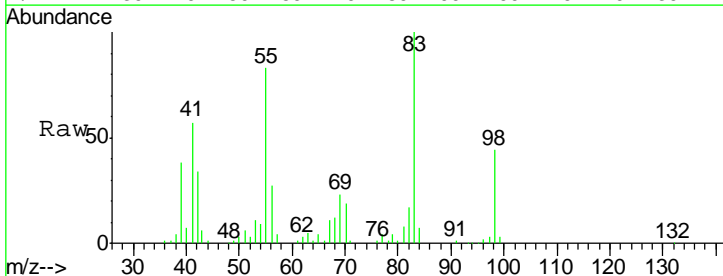


Abundance Ion 95.00 (94.70 to 95.70): VU0
 Ion 96.95 (96.65 to 97.65): VU0
 Ion 131.95 (131.65 to 132.65): V
 Ion 129.95 (129.65 to 130.65): V

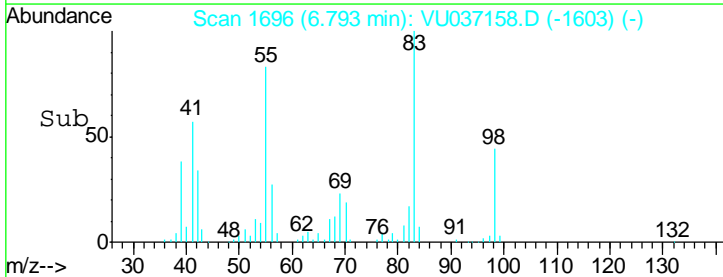
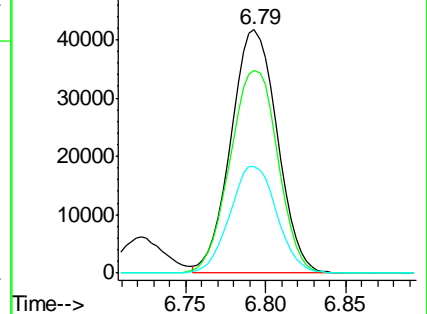


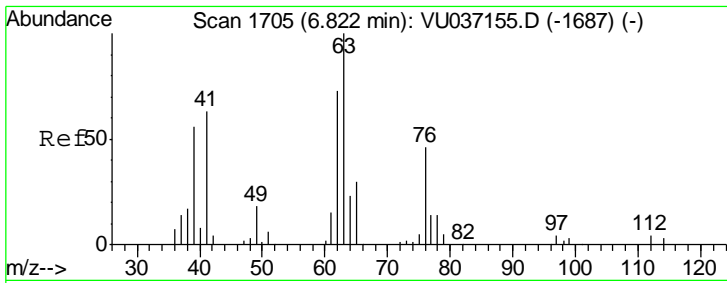
#35
 Methylcyclohexane
 Concen: 5.151 ug/L
 RT: 6.79 min Scan# 1696
 Delta R.T. 0.00 min
 Lab File: VU037158.D
 Acq: 10 Mar 2020 18:21

Tgt Ion	Resp	Lower	Upper
83	82588		
55	86.0	68.1	102.1
98	44.6	37.0	55.4



Abundance Ion 83.15 (82.85 to 83.85): VU0
 Ion 55.10 (54.80 to 55.80): VU0
 Ion 98.15 (97.85 to 98.85): VU0

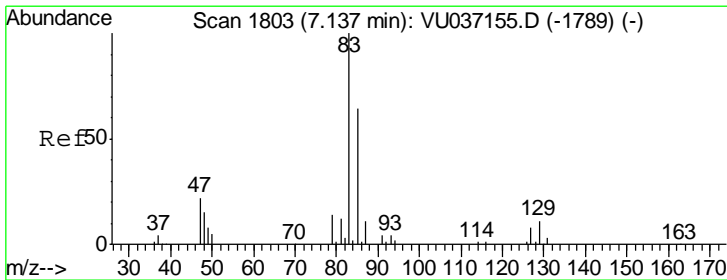
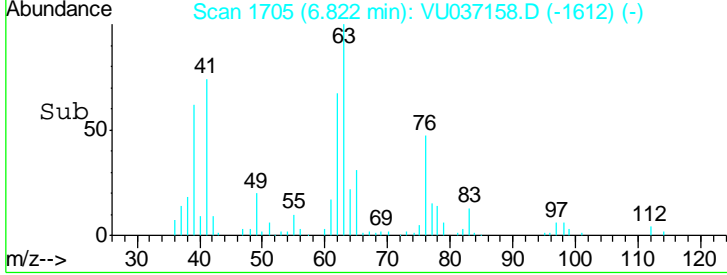
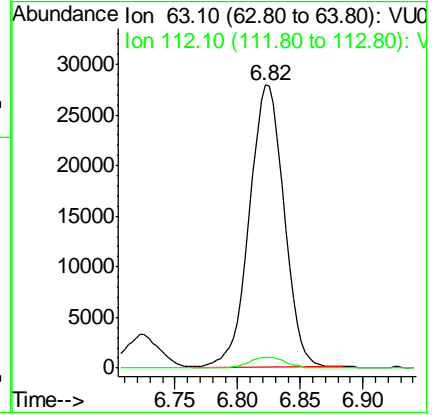
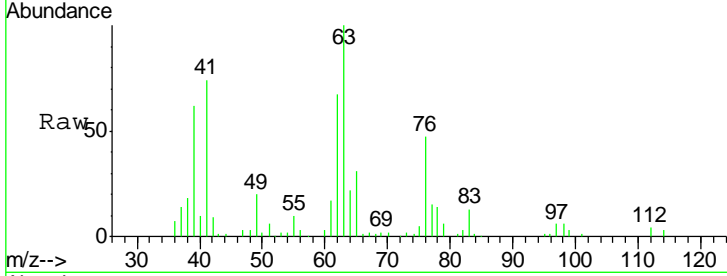




#37
 1,2-Dichloropropane
 Concen: 5.298 ug/L
 RT: 6.82 min Scan# 1705
 Delta R.T. 0.00 min
 Lab File: VU037158.D
 Acq: 10 Mar 2020 18:21

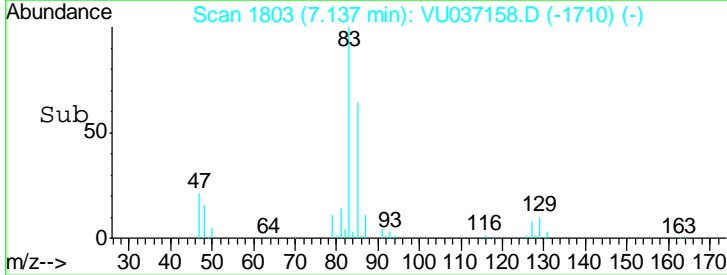
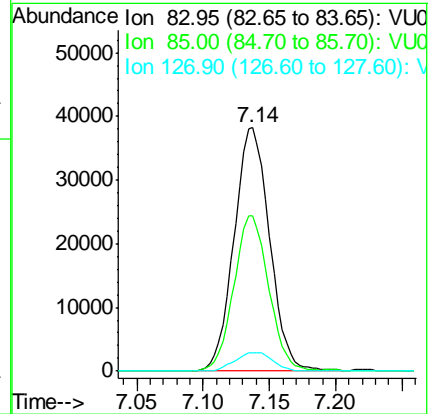
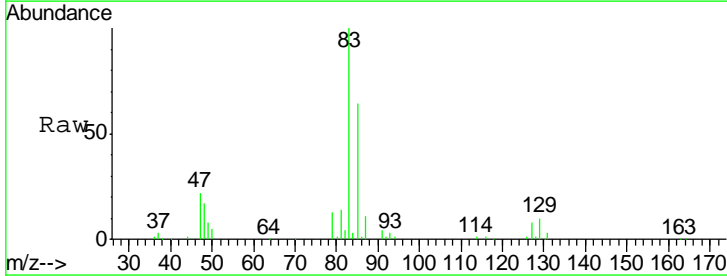
Instrument : MSVOA_U
 ClientSampled : VICV04

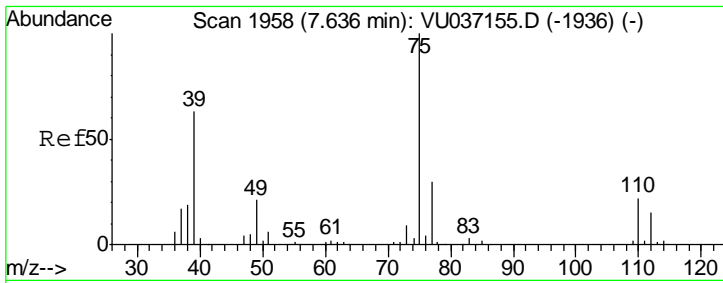
Tgt Ion	Resp	Lower	Upper
63	100		
112	4.0	3.0	4.6



#38
 Bromodichloromethane
 Concen: 5.310 ug/L
 RT: 7.14 min Scan# 1803
 Delta R.T. 0.00 min
 Lab File: VU037158.D
 Acq: 10 Mar 2020 18:21

Tgt Ion	Resp	Lower	Upper
83	100		
85	63.8	45.1	83.7
127	7.6	6.7	10.1

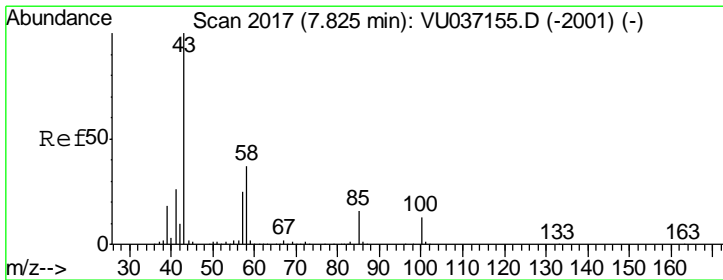
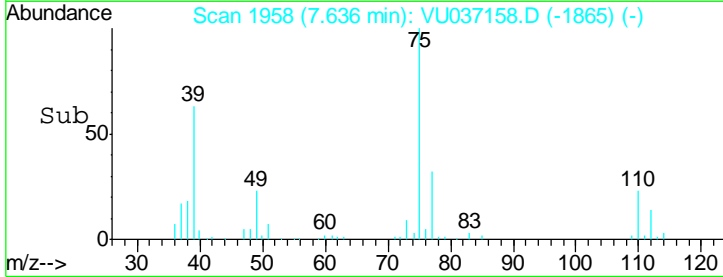
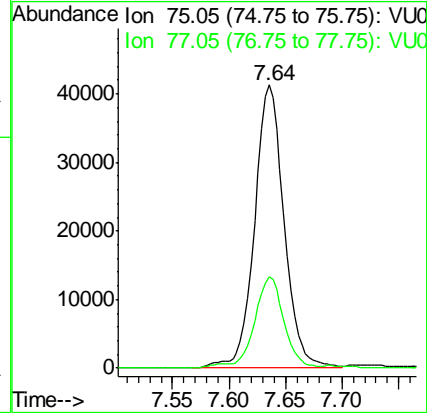
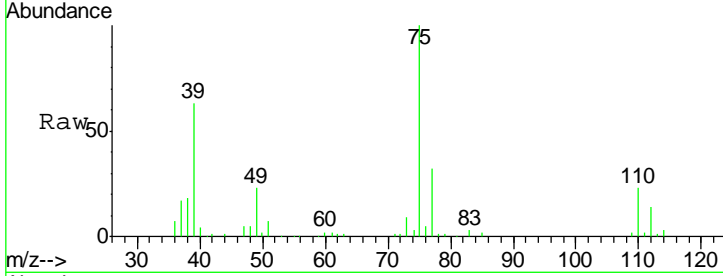




#39
 cis-1,3-Dichloropropene
 Concen: 5.182 ug/L
 RT: 7.64 min Scan# 1958
 Delta R.T. 0.00 min
 Lab File: VU037158.D
 Acq: 10 Mar 2020 18:21

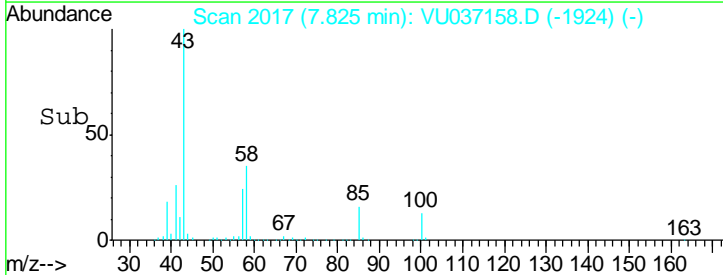
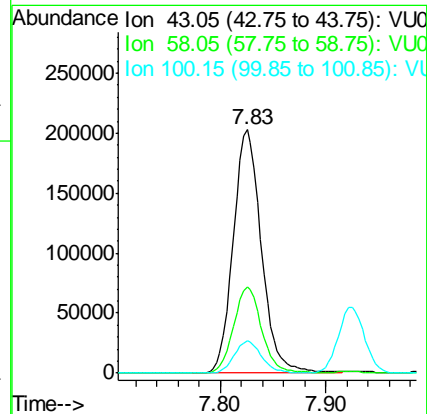
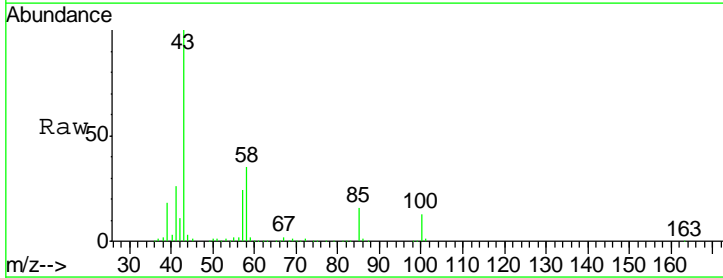
Instrument :
 MSVOA_U
 ClientSampled :
 VICV04

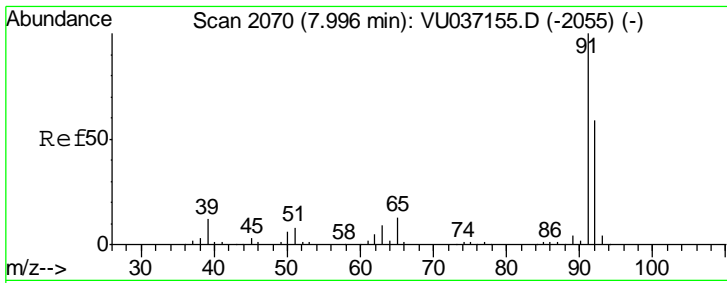
Tgt Ion: 75 Resp: 75186
 Ion Ratio Lower Upper
 75 100
 77 32.2 21.1 39.1



#40
 4-Methyl-2-pentanone
 Concen: 52.596 ug/L
 RT: 7.83 min Scan# 1717
 Delta R.T. 0.00 min
 Lab File: VU037158.D
 Acq: 10 Mar 2020 18:21

Tgt Ion: 43 Resp: 376156
 Ion Ratio Lower Upper
 43 100
 58 35.4 28.6 42.8
 100 12.8 10.2 15.2

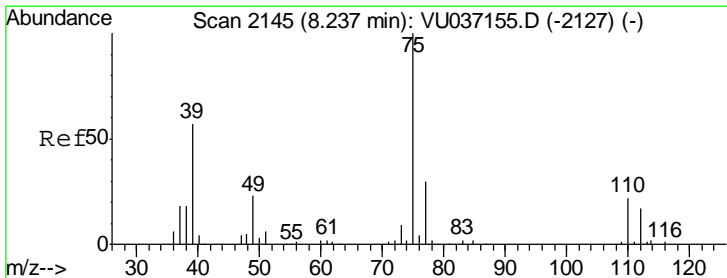
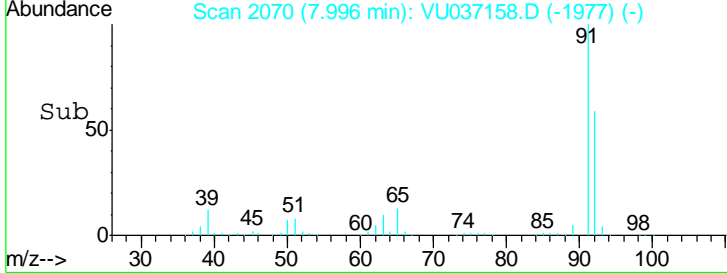
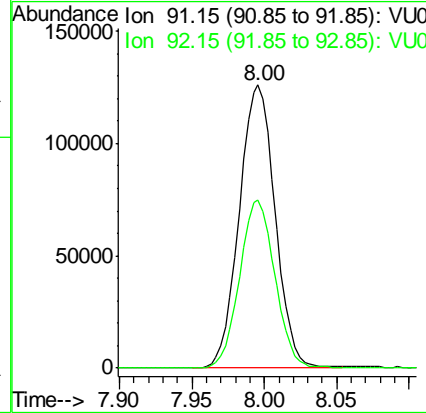
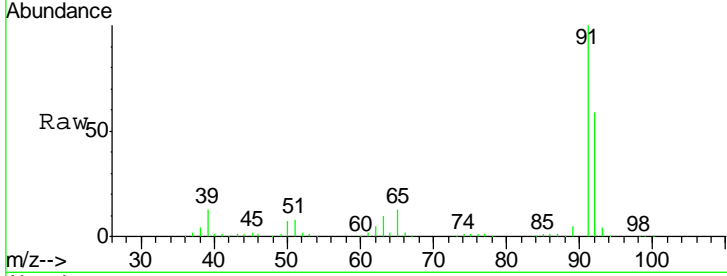




#42
 Toluene
 Concen: 5.256 ug/L
 RT: 8.00 min Scan# 2070
 Delta R.T. 0.00 min
 Lab File: VU037158.D
 Acq: 10 Mar 2020 18:21

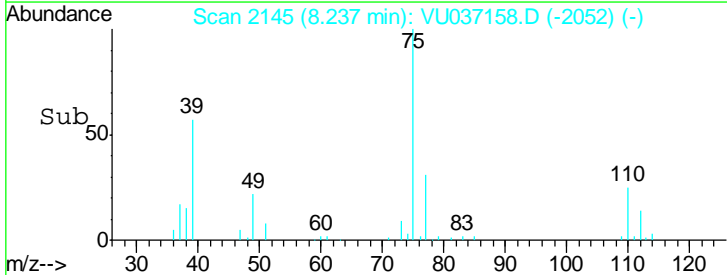
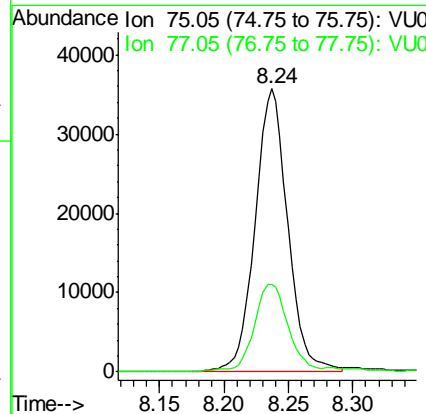
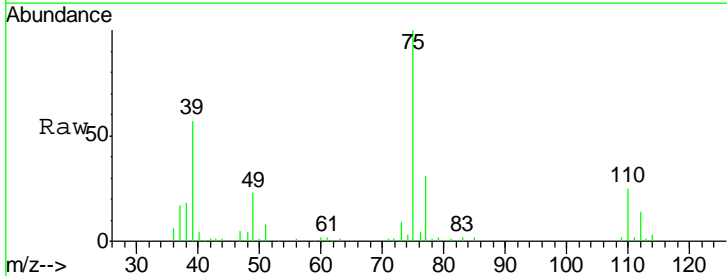
Instrument : MSVOA_U
 ClientSampled : VICV04

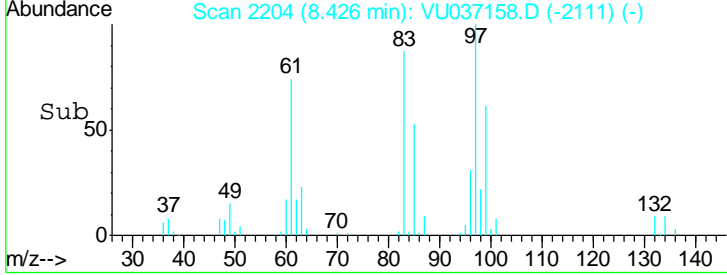
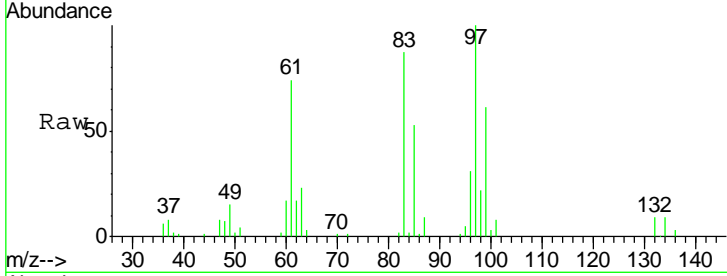
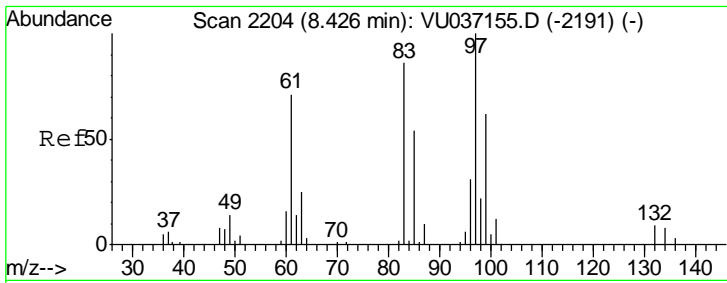
Tgt Ion: 91 Resp: 216716
 Ion Ratio Lower Upper
 91 100
 92 59.5 41.0 76.2



#44
 trans-1,3-Dichloropropene
 Concen: 5.227 ug/L
 RT: 8.24 min Scan# 2145
 Delta R.T. 0.00 min
 Lab File: VU037158.D
 Acq: 10 Mar 2020 18:21

Tgt Ion: 75 Resp: 63256
 Ion Ratio Lower Upper
 75 100
 77 31.1 21.2 39.4

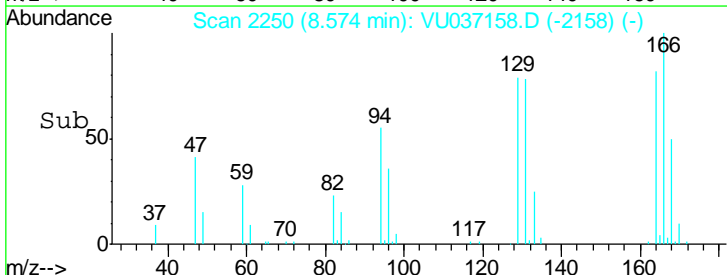
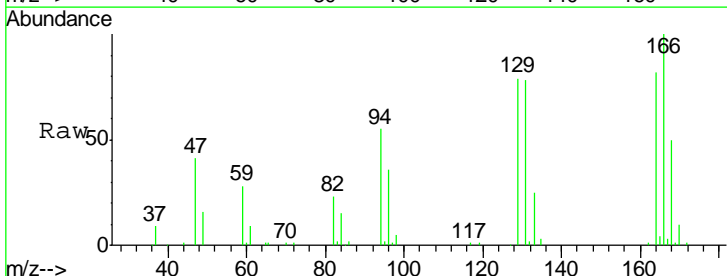
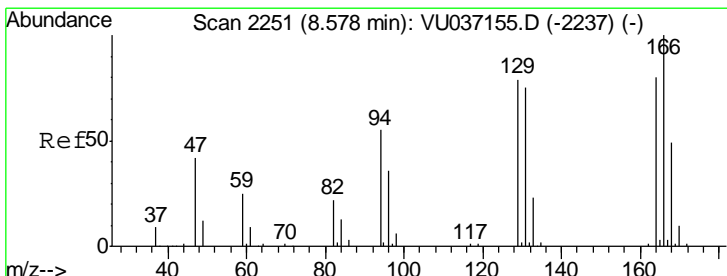
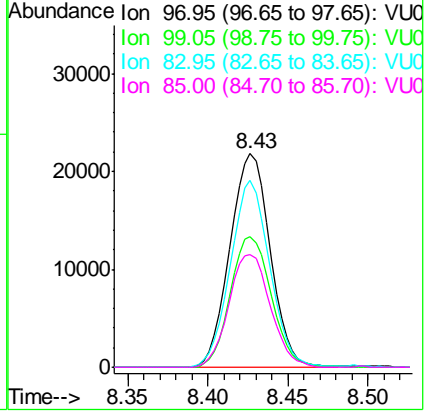




#45
 1,1,2-Trichloroethane
 Concen: 5.127 ug/L
 RT: 8.43 min Scan# 2204
 Delta R.T. 0.00 min
 Lab File: VU037158.D
 Acq: 10 Mar 2020 18:21

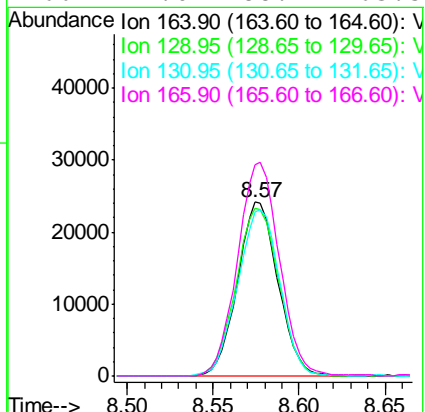
Tgt Ion	Resp	Lower	Upper
97	37387		
99	61.2	43.6	81.0
83	87.4	60.1	111.7
85	53.0	37.8	70.2

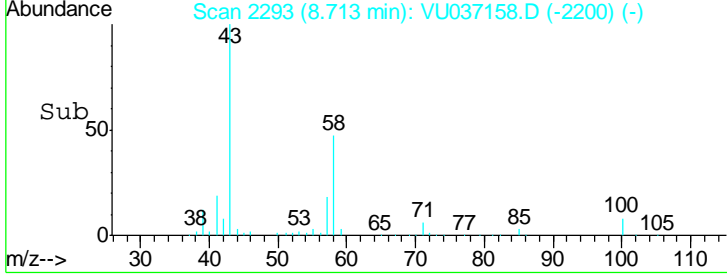
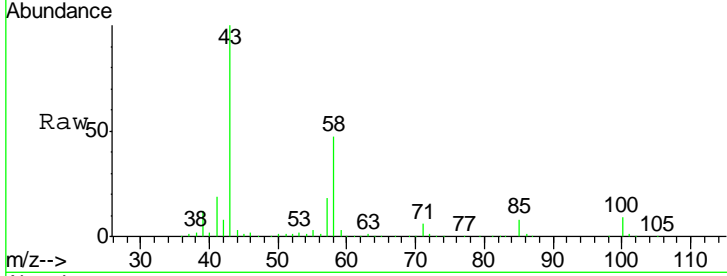
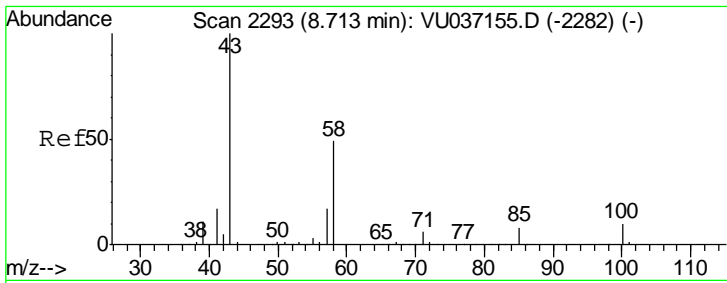
Instrument : MSVOA_U
 ClientSampled : VICV04



#47
 Tetrachloroethene
 Concen: 4.877 ug/L
 RT: 8.57 min Scan# 2250
 Delta R.T. -0.00 min
 Lab File: VU037158.D
 Acq: 10 Mar 2020 18:21

Tgt Ion	Resp	Lower	Upper
164	39338		
129	97.0	69.8	129.6
131	94.8	66.1	122.8
166	122.0	88.1	163.5

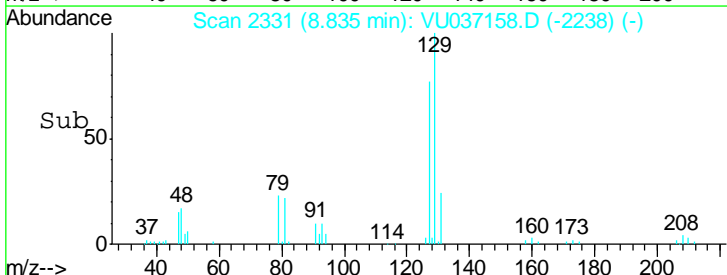
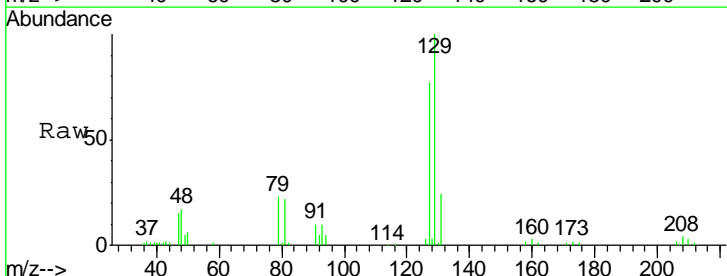
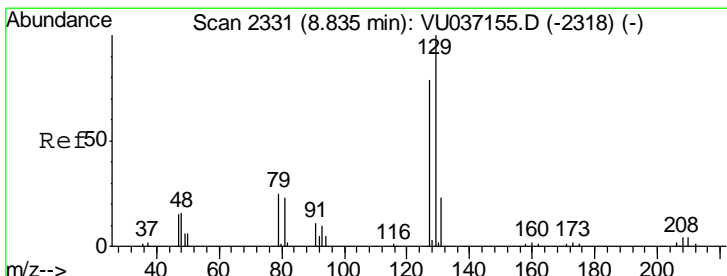
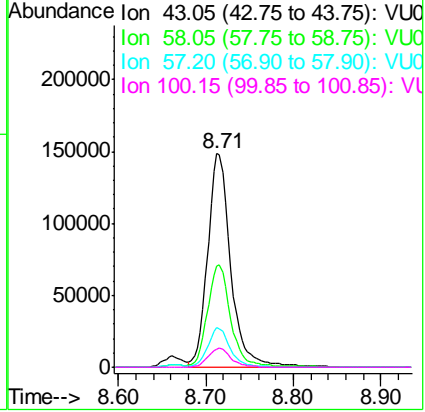




#48
 2-Hexanone
 Concen: 54.675 ug/L
 RT: 8.71 min Scan# 2293
 Delta R.T. 0.00 min
 Lab File: VU037158.D
 Acq: 10 Mar 2020 18:21

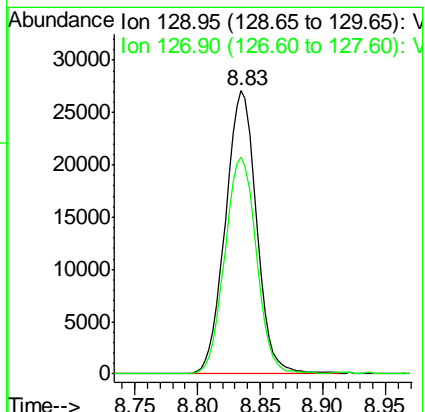
Tgt Ion	Resp	Lower	Upper
43	272623		
58	47.6	38.6	58.0
57	17.4	13.6	20.4
100	9.0	7.4	11.2

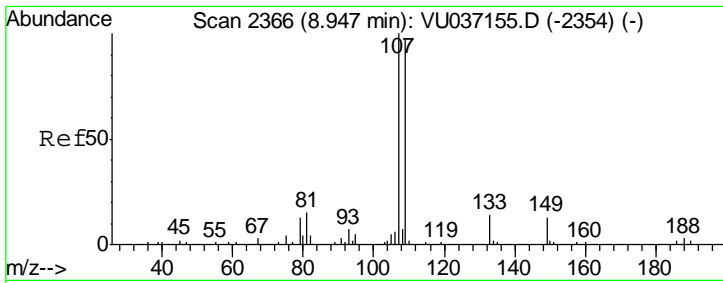
Instrument : MSVOA_U
 ClientSampled : VICV04



#49
 Dibromochloromethane
 Concen: 5.323 ug/L
 RT: 8.83 min Scan# 2331
 Delta R.T. 0.00 min
 Lab File: VU037158.D
 Acq: 10 Mar 2020 18:21

Tgt Ion	Resp	Lower	Upper
129	46745		
127	76.5	54.9	102.1

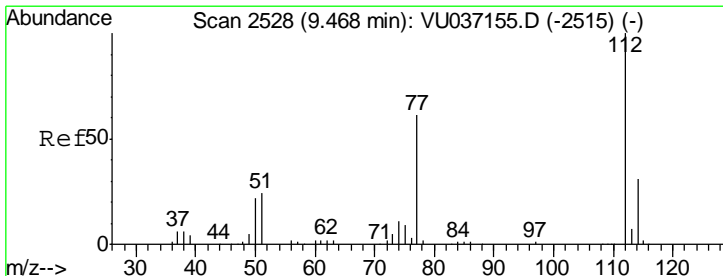
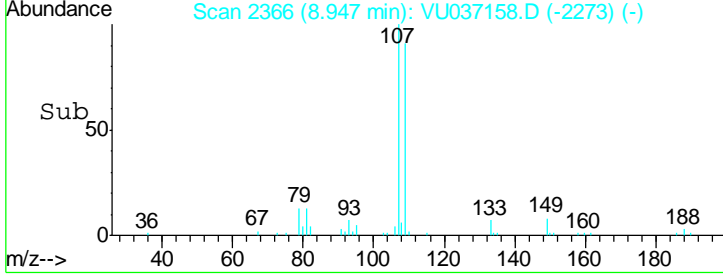
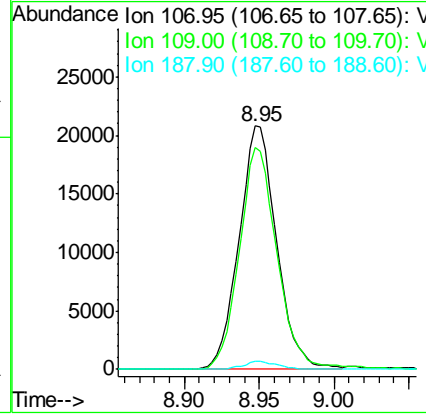
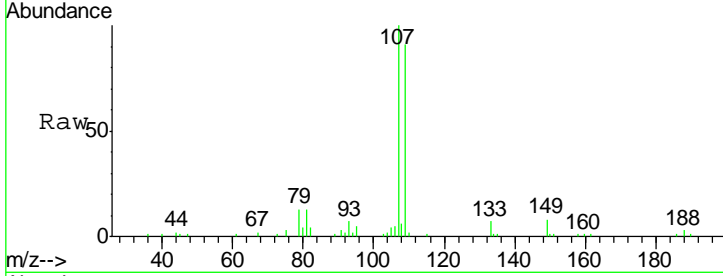




#50
 1,2-Dibromoethane
 Concen: 5.259 ug/L
 RT: 8.95 min Scan# 2366
 Delta R.T. 0.00 min
 Lab File: VU037158.D
 Acq: 10 Mar 2020 18:21

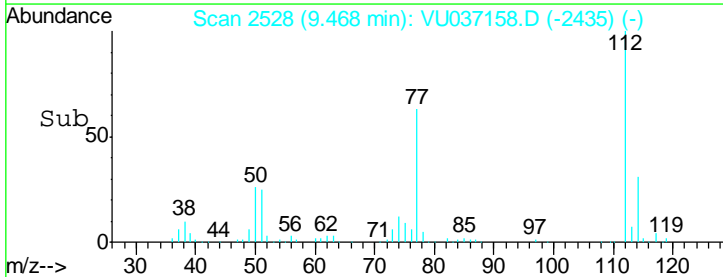
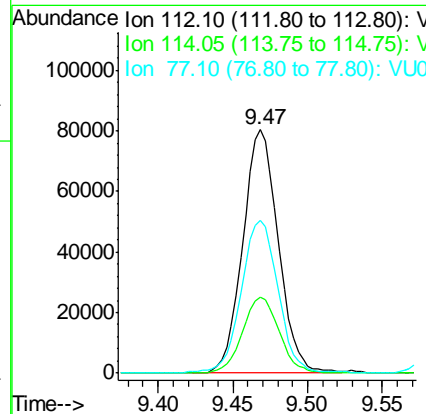
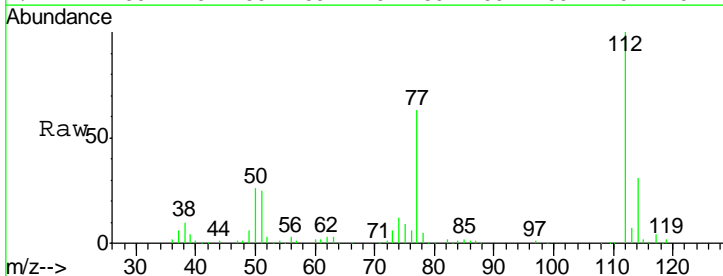
Instrument :
 MSVOA_U
 ClientSampled :
 VICV04

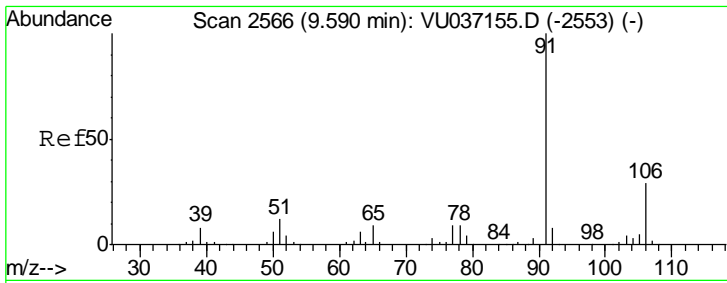
Tgt Ion	Resp	Lower	Upper
107	36363		
109	91.0	68.2	126.6
188	3.3	2.0	3.0#



#51
 Chlorobenzene
 Concen: 5.004 ug/L
 RT: 9.47 min Scan# 2528
 Delta R.T. 0.00 min
 Lab File: VU037158.D
 Acq: 10 Mar 2020 18:21

Tgt Ion	Resp	Lower	Upper
112	132831		
114	31.0	22.0	40.8
77	62.8	49.4	74.2

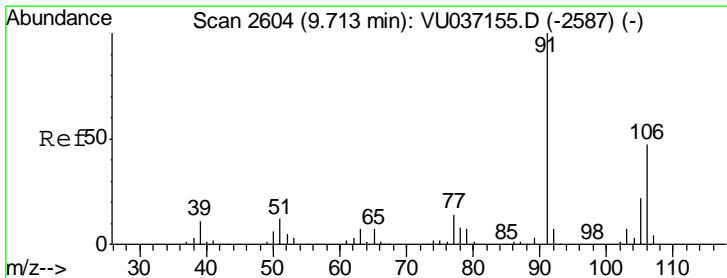
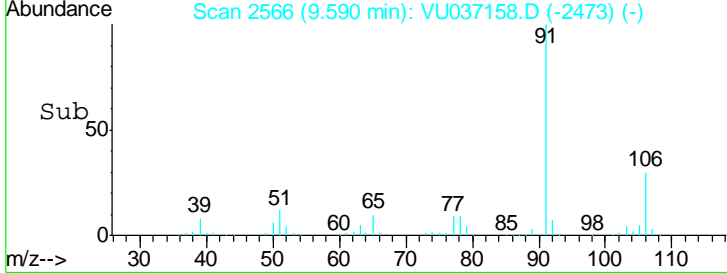
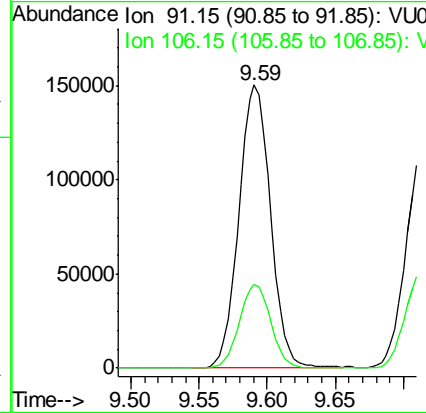
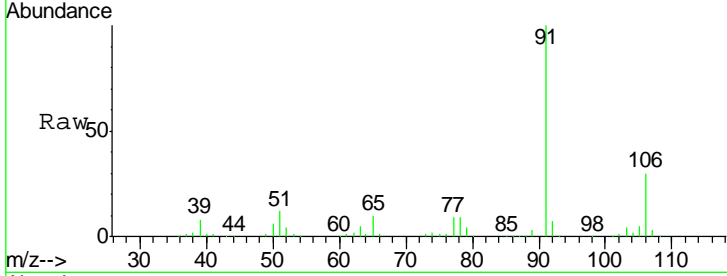




#52
 Ethylbenzene
 Concen: 5.310 ug/L
 RT: 9.59 min Scan# 2566
 Delta R.T. 0.00 min
 Lab File: VU037158.D
 Acq: 10 Mar 2020 18:21

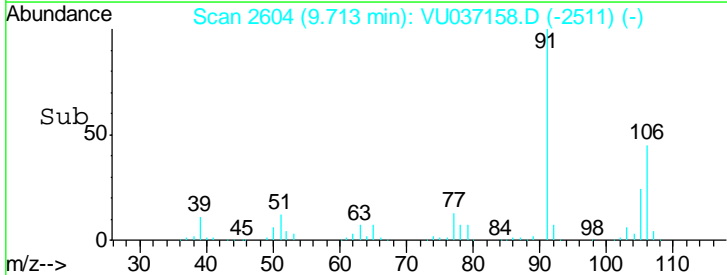
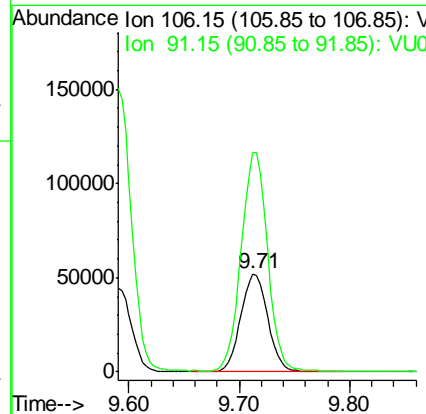
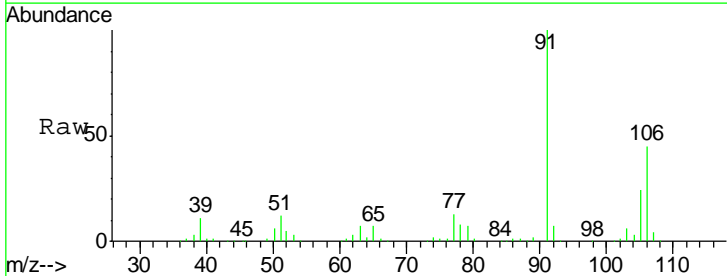
Instrument : MSVOA_U
 ClientSampled : VU037158.D
 VICV04

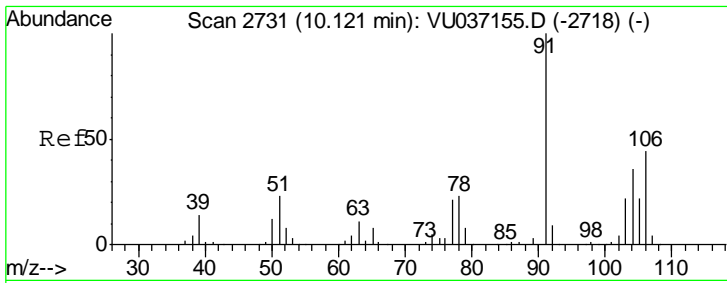
Tgt Ion: 91 Resp: 242110
 Ion Ratio Lower Upper
 91 100
 106 29.7 20.4 37.8



#53
 m,p-Xylene
 Concen: 5.425 ug/L
 RT: 9.71 min Scan# 2604
 Delta R.T. 0.00 min
 Lab File: VU037158.D
 Acq: 10 Mar 2020 18:21

Tgt Ion: 106 Resp: 88916
 Ion Ratio Lower Upper
 106 100
 91 223.5 150.4 279.4

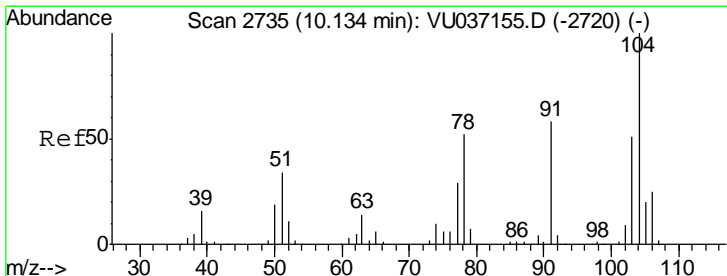
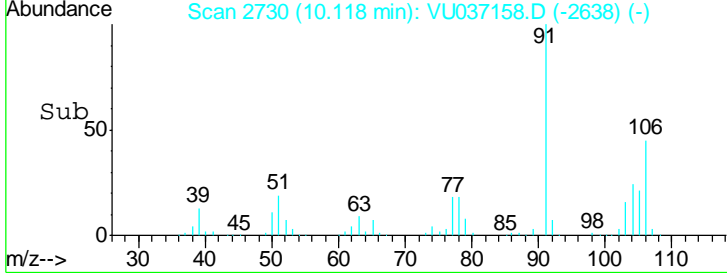
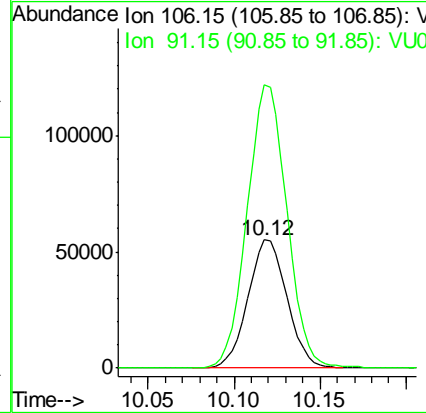
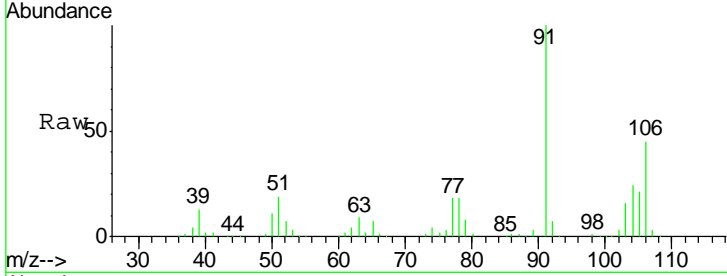




#54
 o-Xylene
 Concen: 5.456 ug/L
 RT: 10.12 min Scan# 2730
 Delta R.T. -0.00 min
 Lab File: VU037158.D
 Acq: 10 Mar 2020 18:21

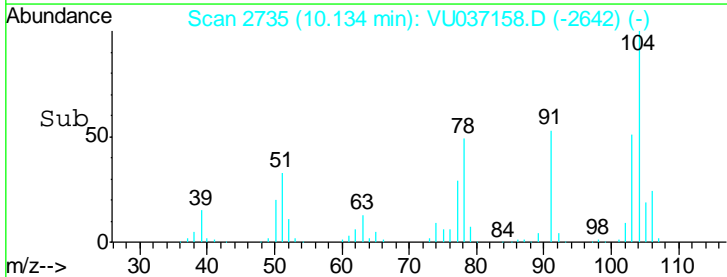
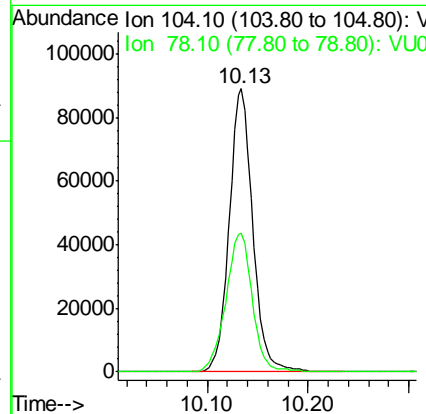
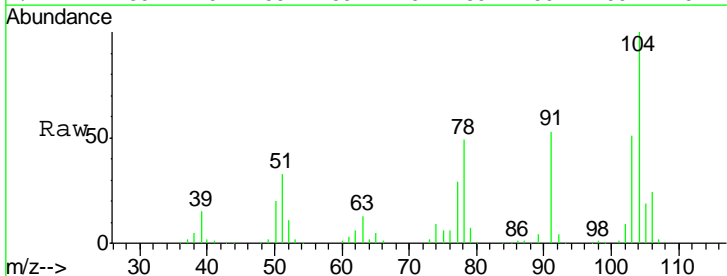
Instrument : MSVOA_U
 ClientSampled : VICV04

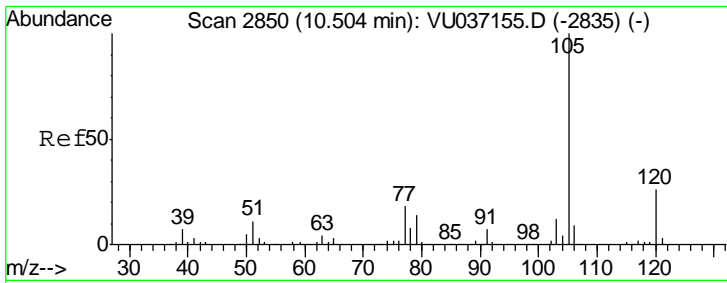
Tgt Ion:106 Resp: 87188
 Ion Ratio Lower Upper
 106 100
 91 221.3 160.6 298.2



#55
 Styrene
 Concen: 5.540 ug/L
 RT: 10.13 min Scan# 2735
 Delta R.T. 0.00 min
 Lab File: VU037158.D
 Acq: 10 Mar 2020 18:21

Tgt Ion:104 Resp: 145197
 Ion Ratio Lower Upper
 104 100
 78 48.9 36.2 67.2

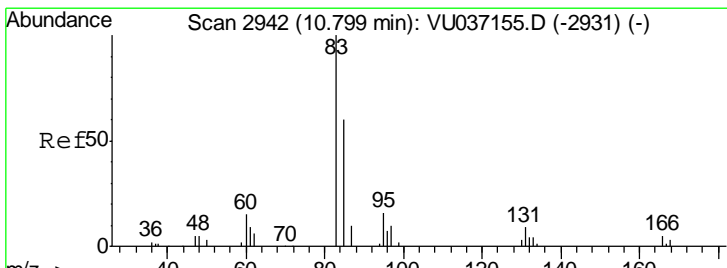
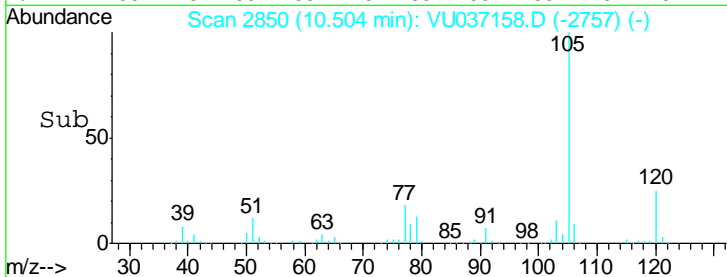
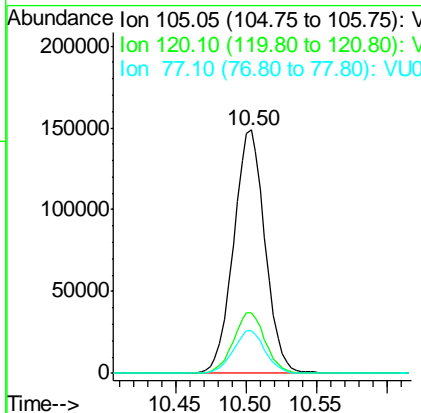
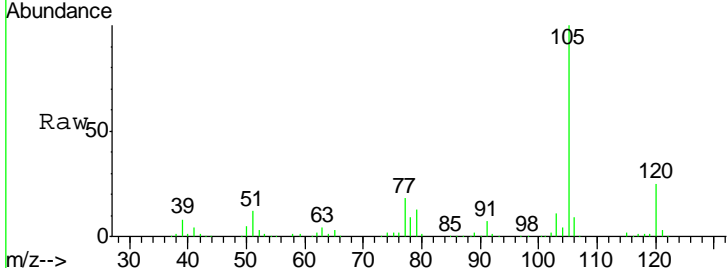




#56
 Isopropylbenzene
 Concen: 5.411 ug/L
 RT: 10.50 min Scan# 2850
 Delta R.T. 0.00 min
 Lab File: VU037158.D
 Acq: 10 Mar 2020 18:21

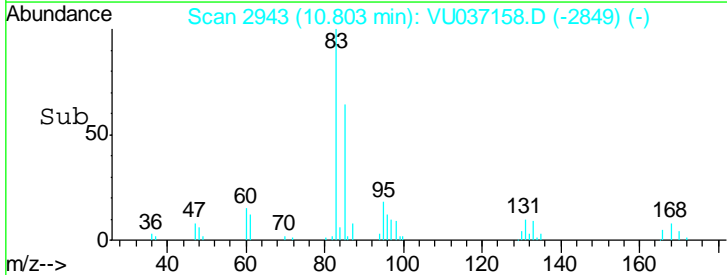
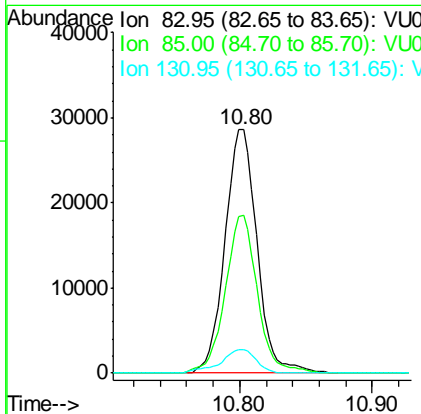
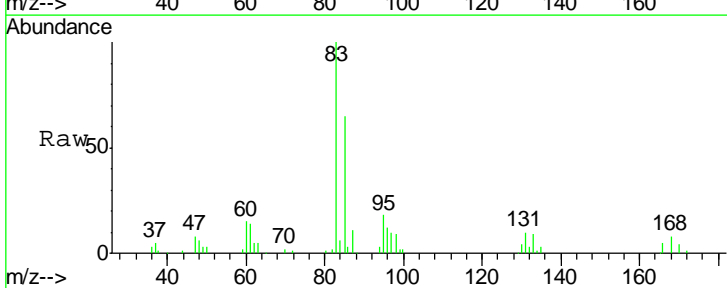
Instrument :
 MSVOA_U
 ClientSampled :
 VICV04

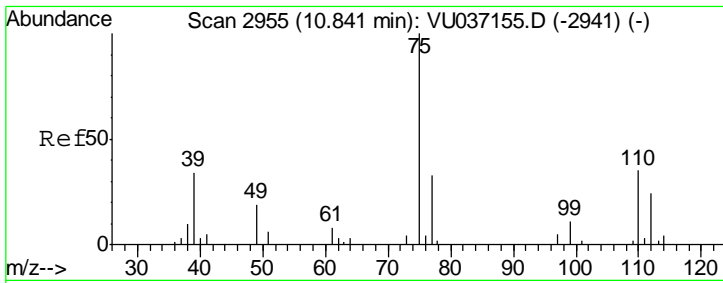
Tgt Ion	Resp	Lower	Upper
105	232059		
120	25.2	20.5	30.7
77	17.7	14.2	21.4



#58
 1,1,2,2-Tetrachloroethane
 Concen: 5.342 ug/L
 RT: 10.80 min Scan# 2943
 Delta R.T. 0.00 min
 Lab File: VU037158.D
 Acq: 10 Mar 2020 18:21

Tgt Ion	Resp	Lower	Upper
83	48101		
85	64.9	43.0	80.0
131	9.8	8.2	12.2



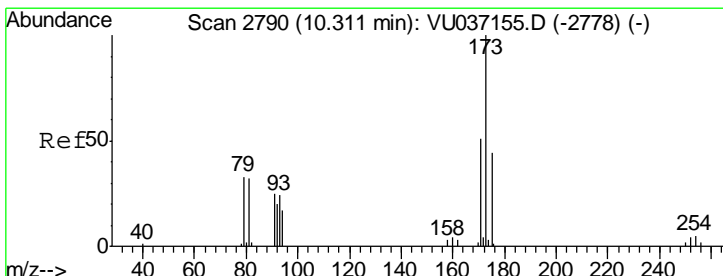
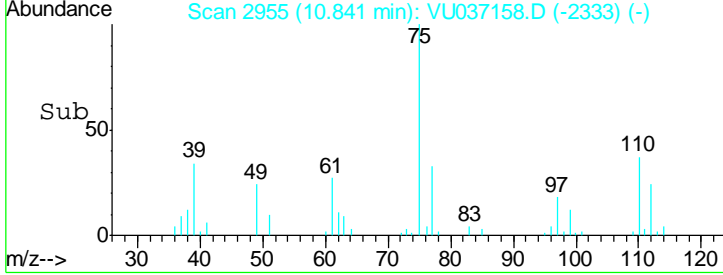
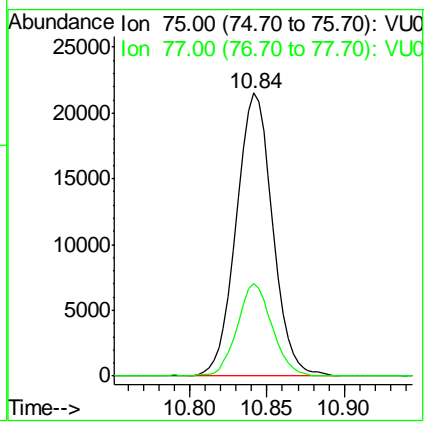
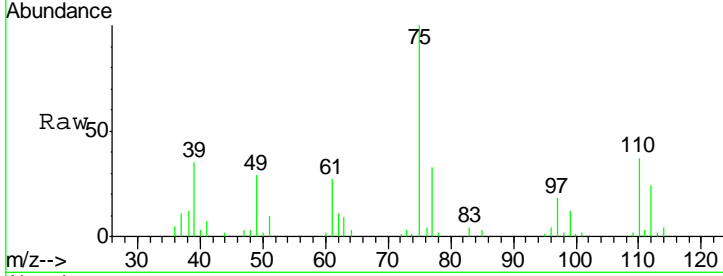


#59
 1,2,3-Trichloropropane
 Concen: 4.859 ug/L
 RT: 10.84 min Scan# 2955
 Delta R.T. 0.00 min
 Lab File: VU037158.D
 Acq: 10 Mar 2020 18:21

Instrument : MSVOA_U
 ClientSampled : VICV04

Tgt Ion: 75 Resp: 35142

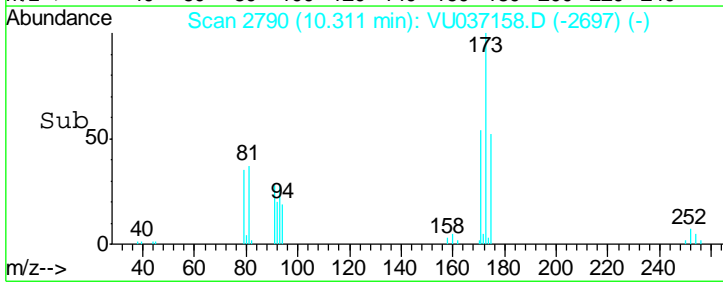
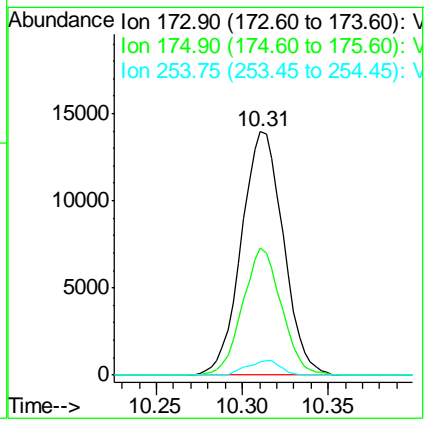
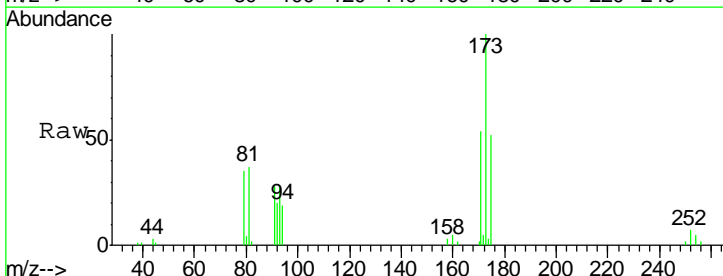
Ion	Ratio	Lower	Upper
75	100		
77	31.5	27.4	41.0

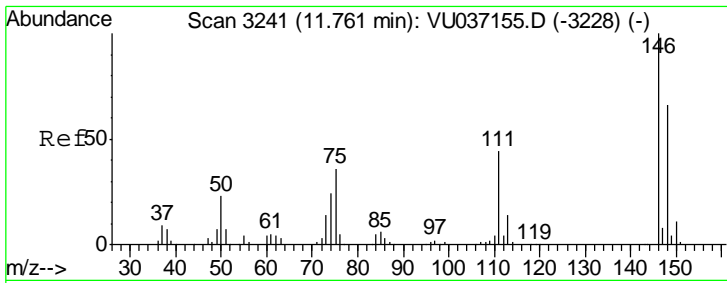


#61
 Bromoform
 Concen: 4.902 ug/L
 RT: 10.31 min Scan# 2790
 Delta R.T. 0.00 min
 Lab File: VU037158.D
 Acq: 10 Mar 2020 18:21

Tgt Ion: 173 Resp: 23670

Ion	Ratio	Lower	Upper
173	100		
175	48.3	37.4	56.2
254	4.8	3.5	5.3

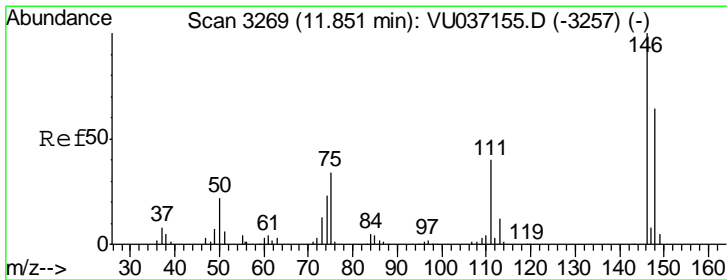
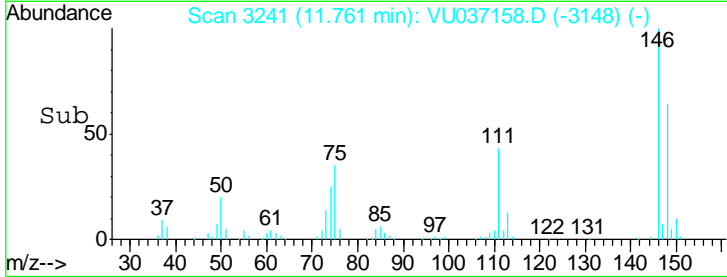
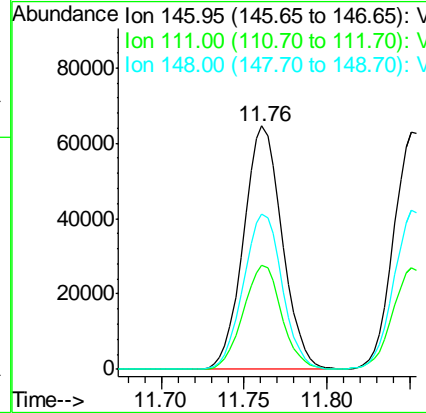
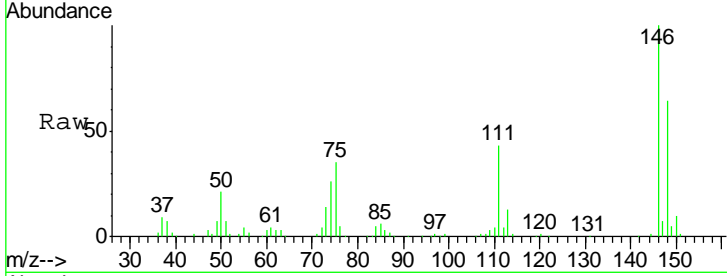




#62
 1,3-Dichlorobenzene
 Concen: 5.048 ug/L
 RT: 11.76 min Scan# 3241
 Delta R.T. 0.00 min
 Lab File: VU037158.D
 Acq: 10 Mar 2020 18:21

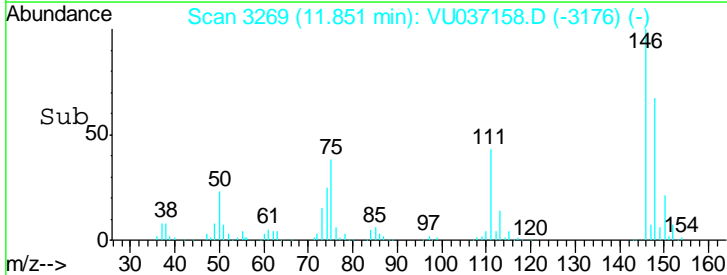
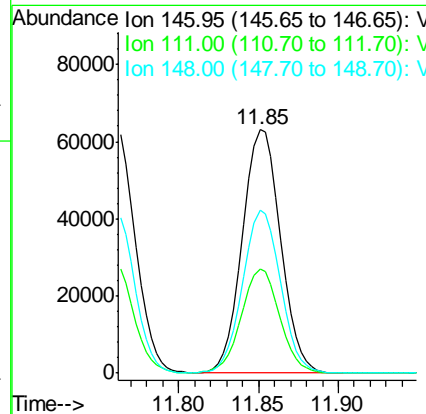
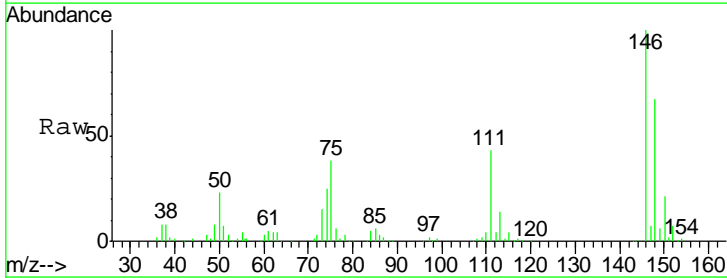
Instrument :
 MSVOA_U
 ClientSampled :
 VICV04

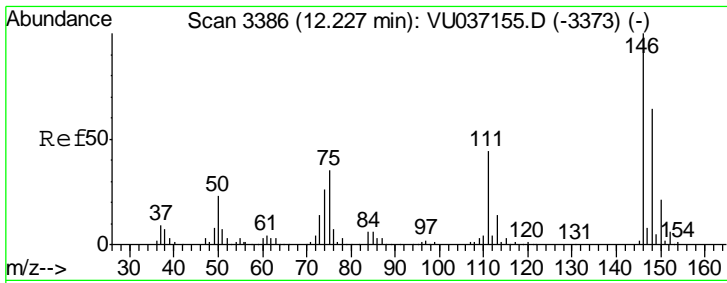
Tgt Ion	Resp	Lower	Upper
146	104687		
111	42.6	30.6	56.8
148	63.7	46.2	85.8



#63
 1,4-Dichlorobenzene
 Concen: 4.986 ug/L
 RT: 11.85 min Scan# 3269
 Delta R.T. 0.00 min
 Lab File: VU037158.D
 Acq: 10 Mar 2020 18:21

Tgt Ion	Resp	Lower	Upper
146	102695		
111	42.9	28.4	52.8
148	66.7	44.9	83.5

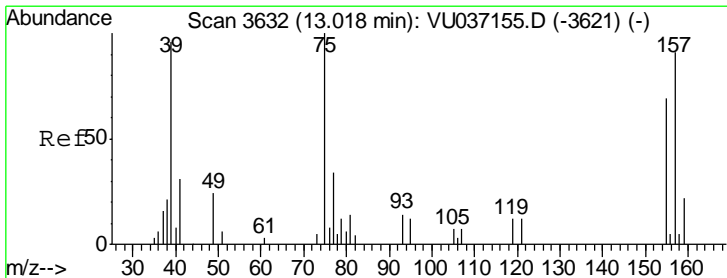
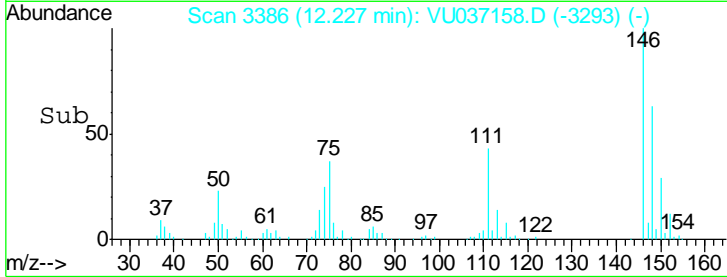
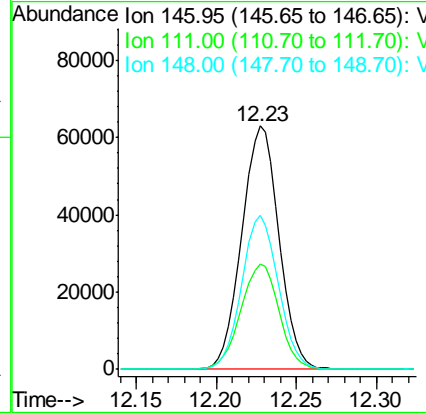
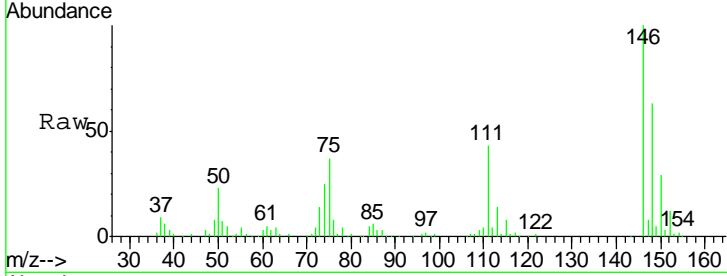




#65
 1,2-Dichlorobenzene
 Concen: 5.073 ug/L
 RT: 12.23 min Scan# 3386
 Delta R.T. 0.00 min
 Lab File: VU037158.D
 Acq: 10 Mar 2020 18:21

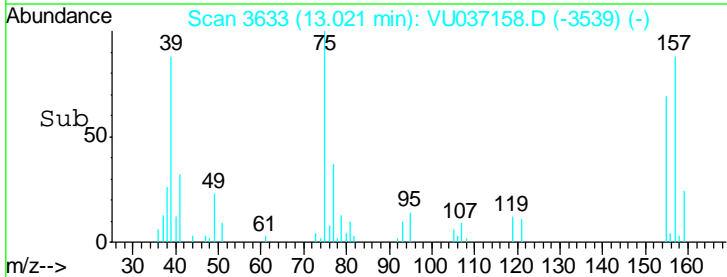
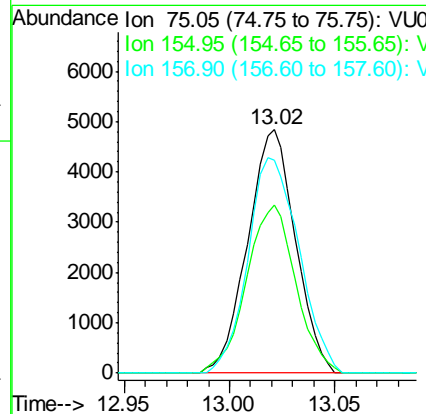
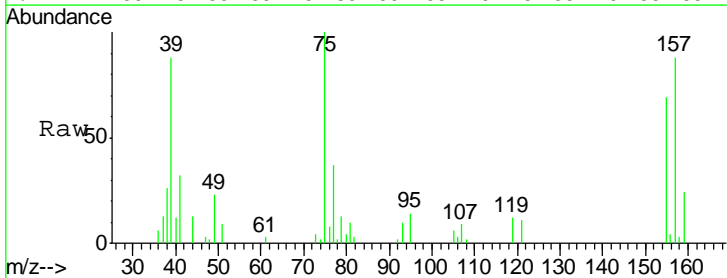
Instrument :
 MSVOA_U
 ClientSampled :
 VICV04

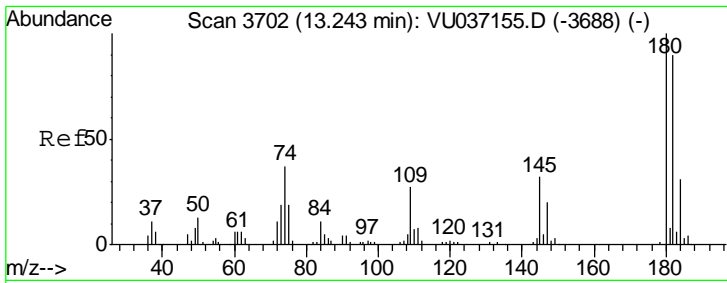
Tgt Ion	Resp	Lower	Upper
146	99739		
111	43.1	35.5	53.3
148	63.1	51.4	77.2



#66
 1,2-Dibromo-3-chloropropane
 Concen: 5.038 ug/L
 RT: 13.02 min Scan# 3633
 Delta R.T. 0.00 min
 Lab File: VU037158.D
 Acq: 10 Mar 2020 18:21

Tgt Ion	Resp	Lower	Upper
75	7605		
155	68.8	55.5	83.3
157	87.5	73.1	109.7

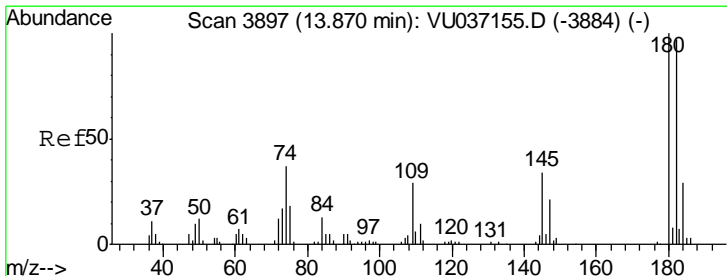
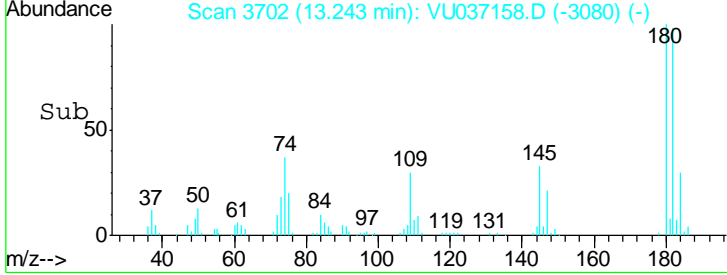
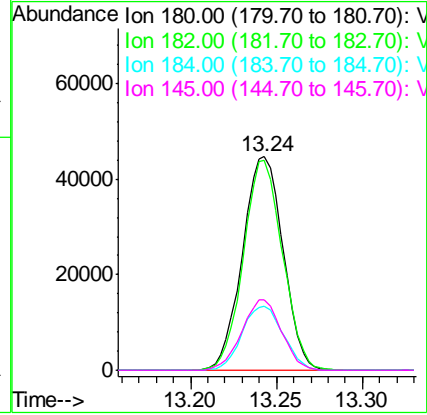
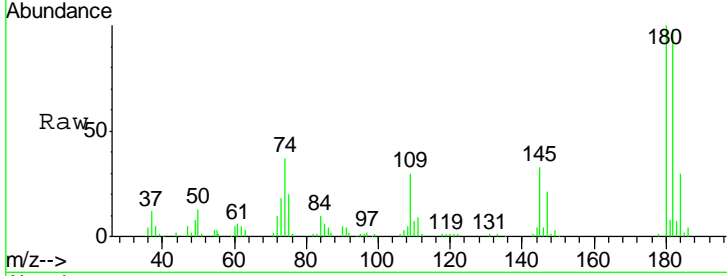




#67
 1,3,5-Trichlorobenzene
 Concen: 5.159 ug/L
 RT: 13.24 min Scan# 3702
 Delta R.T. 0.00 min
 Lab File: VU037158.D
 Acq: 10 Mar 2020 18:21

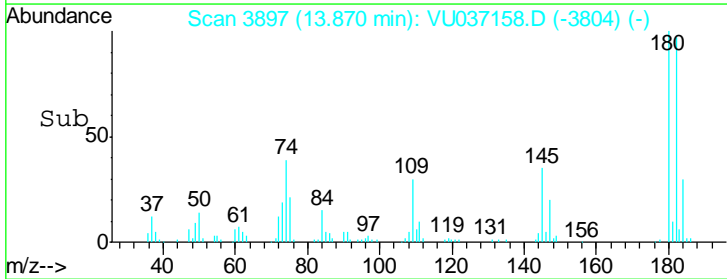
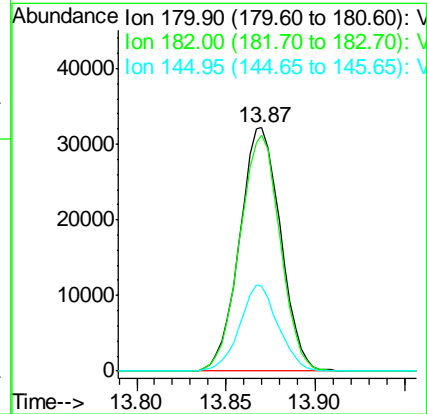
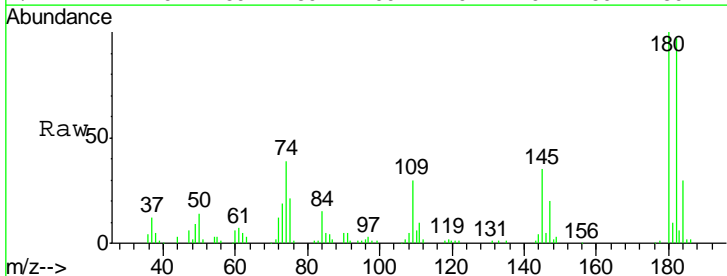
Instrument :
 MSVOA_U
 ClientSampled :
 VICV04

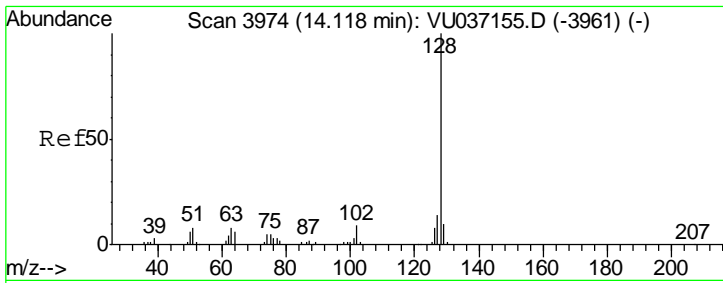
Tgt Ion	Resp	Lower	Upper
180	100		
182	94.7	73.6	110.4
184	30.4	24.1	36.1
145	32.3	26.3	39.5



#68
 1,2,4-trichlorobenzene
 Concen: 5.345 ug/L
 RT: 13.87 min Scan# 3897
 Delta R.T. 0.00 min
 Lab File: VU037158.D
 Acq: 10 Mar 2020 18:21

Tgt Ion	Resp	Lower	Upper
180	100		
182	95.3	76.7	115.1
145	33.1	26.6	39.8

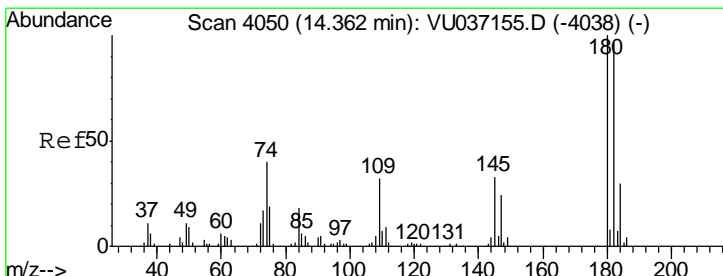
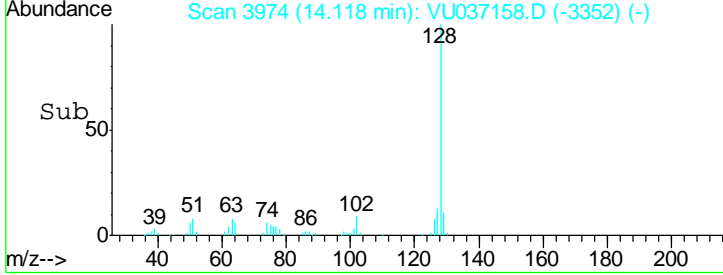
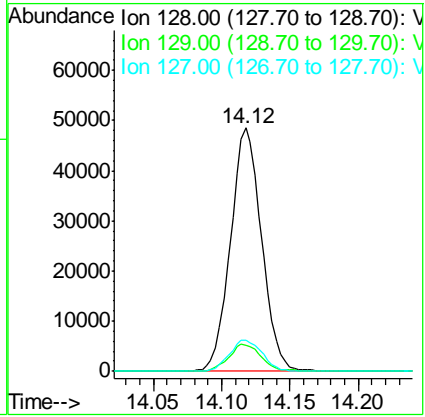
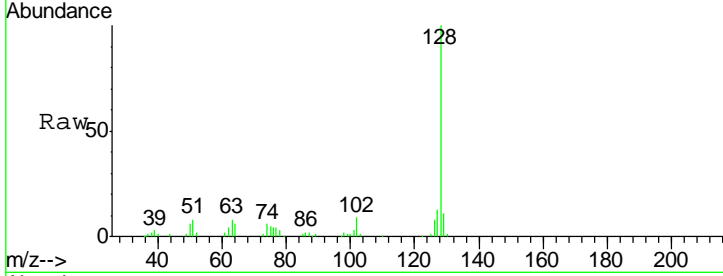




#69
 Naphthalene
 Concen: 5.584 ug/L
 RT: 14.12 min Scan# 3974
 Delta R.T. 0.00 min
 Lab File: VU037158.D
 Acq: 10 Mar 2020 18:21

Instrument : MSVOA_U
 ClientSampled : VICV04

Tgt Ion	Resp	Lower	Upper
128	76785		
129	11.5	8.6	12.8
127	13.6	10.6	16.0



#70
 1,2,3-Trichlorobenzene
 Concen: 5.656 ug/L
 RT: 14.36 min Scan# 4050
 Delta R.T. 0.00 min
 Lab File: VU037158.D
 Acq: 10 Mar 2020 18:21

Tgt Ion	Resp	Lower	Upper
180	51090		
182	95.6	77.0	115.6
145	33.9	28.2	42.4

