

Data File : VU029947.D
 Acq On : 10 Mar 2019 14:29
 Operator : JC/SP
 Sample : K1818-02ME
 Misc : 5.93g/5mL/100uL/5.0mL/MSVOA_U/MEOH
 ALS Vial : 9 Sample Multiplier: 1

Instrument :
 MSVOA_U
 ClientSampleId :
 BFOQ6ME

Quant Time: Mar 11 07:14:13 2019
 Quant Method : Z:\VOASRV\HPCHEM1\MSVOA_U\METHOD\SOMULM031119WMA.M
 Quant Title : VOC Analysis
 QLast Update : Mon Mar 11 07:10:15 2019
 Response via : Initial Calibration

Internal Standards	R.T.	QIon	Response	Conc	Units	Dev(Min)
1) 1,4-Difluorobenzene	5.88	114	603506	50.00	ug/L	0.00
28) Chlorobenzene-d5	9.09	117	594452	50.00	ug/L	0.00
60) 1,4-Dichlorobenzene-d4	11.49	152	300916	50.00	ug/L	0.00

System Monitoring Compounds

4) Vinyl Chloride-d3	1.39	65	196441	53.35	ug/L	0.00
Spiked Amount	50.000	Range	60 - 135	Recovery	=	106.70%
7) Chloroethane-d5	1.70	69	184	0.06	ug/L	0.03
Spiked Amount	50.000	Range	70 - 130	Recovery	=	0.12%#
11) 1,1-Dichloroethene-d2	2.23	63	279653	40.29	ug/L	-0.05
Spiked Amount	50.000	Range	60 - 125	Recovery	=	80.58%
21) 2-Butanone-d5	4.19	46	331013	116.03	ug/L	0.02
Spiked Amount	100.000	Range	40 - 130	Recovery	=	116.03%
24) Chloroform-d	4.64	84	376719	52.57	ug/L	0.00
Spiked Amount	50.000	Range	70 - 125	Recovery	=	105.14%
26) 1,2-Dichloroethane-d4	5.30	65	233688	55.66	ug/L	0.00
Spiked Amount	50.000	Range	70 - 125	Recovery	=	111.32%
32) Benzene-d6	5.33	84	841454	56.80	ug/L	0.00
Spiked Amount	50.000	Range	70 - 125	Recovery	=	113.60%
36) 1,2-Dichloropropane-d6	6.32	67	251340	56.17	ug/L	0.00
Spiked Amount	50.000	Range	70 - 120	Recovery	=	112.34%
41) Toluene-d8	7.56	98	781141	54.95	ug/L	0.00
Spiked Amount	50.000	Range	80 - 120	Recovery	=	109.90%
43) trans-1,3-Dichloropropene-	7.85	79	115523	53.35	ug/L	0.00
Spiked Amount	50.000	Range	60 - 125	Recovery	=	106.70%
47) 2-Hexanone-d5	8.32	63	298062	123.81	ug/L	0.01
Spiked Amount	100.000	Range	45 - 130	Recovery	=	123.81%
57) 1,1,2,2-Tetrachloroethane-	10.43	84	421335	59.64	ug/L	0.00
Spiked Amount	50.000	Range	65 - 120	Recovery	=	119.28%
64) 1,2-Dichlorobenzene-d4	11.86	152	330855	56.06	ug/L	0.00
Spiked Amount	50.000	Range	80 - 120	Recovery	=	112.12%

Target Compounds

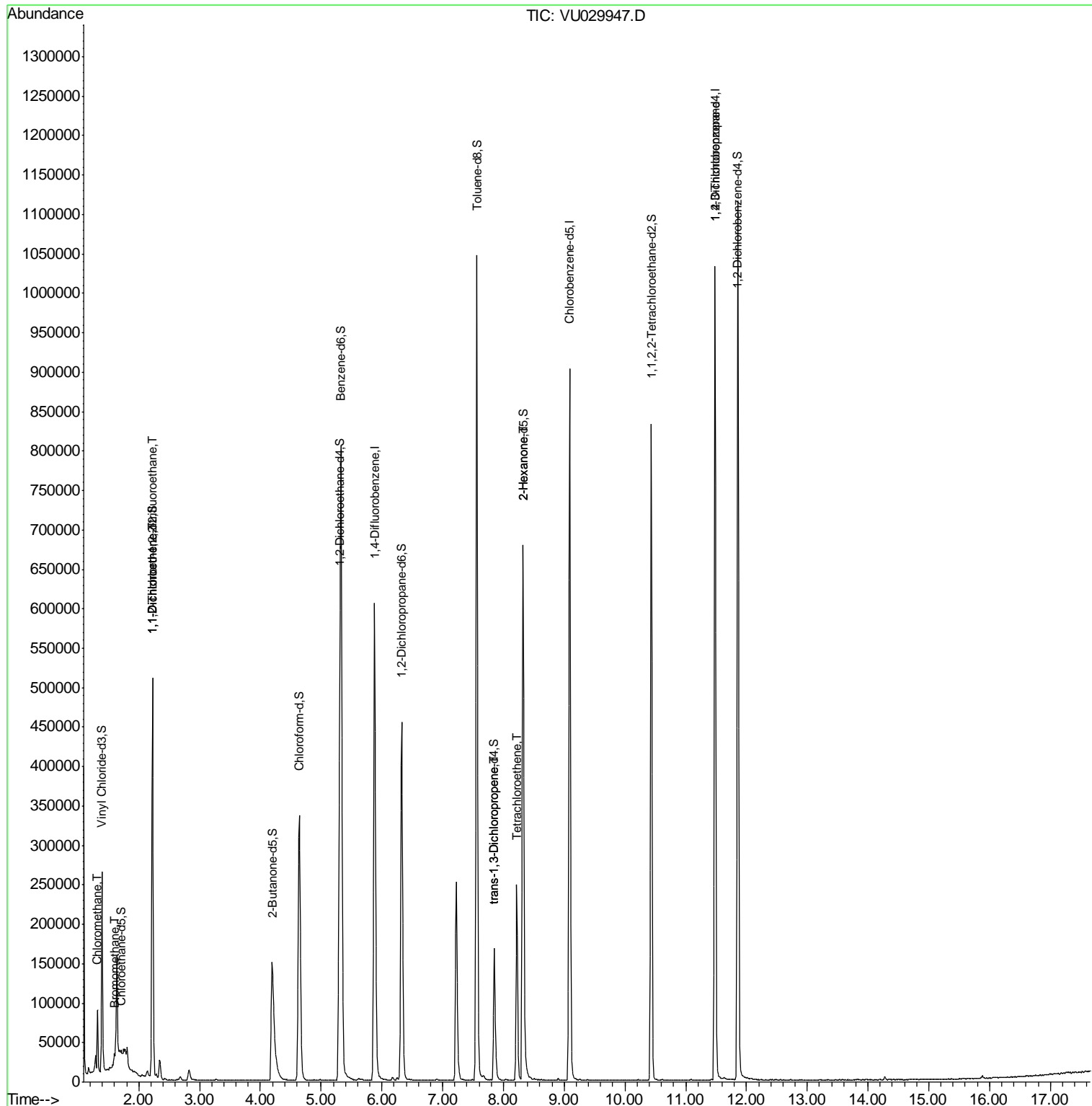
					Qvalue
3) Chloromethane	1.32	50	57488	9.437	ug/L 100
6) Bromomethane	1.60	94	2842	2.271	ug/L 83
10) 1,1,2-Trichloro-1,2,2-trif	2.23	101	2963	0.770	ug/L # 19
12) 1,1-Dichloroethene	2.23	96	2547	0.682	ug/L # 1
44) trans-1,3-Dichloropropene	7.85	75	5056	0.901	ug/L 85
46) Tetrachloroethene	8.22	164	61776	16.760	ug/L 96
48) 2-Hexanone	8.32	43	30220	6.478	ug/L # 68
59) 1,2,3-Trichloropropane	11.49	75	30292	5.522	ug/L 93

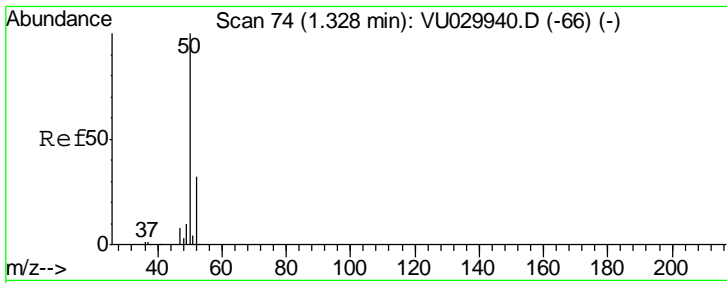
(#) = qualifier out of range (m) = manual integration (+) = signals summed

Data File : VU029947.D
Acq On : 10 Mar 2019 14:29
Operator : JC/SP
Sample : K1818-02ME
Misc : 5.93g/5mL/100uL/5.0mL/MSVOA_U/MEOH
ALS Vial : 9 Sample Multiplier: 1

Instrument :
MSVOA_U
Client Sampled :
BF0Q6ME

Quant Time: Mar 11 07:14:13 2019
Quant Method : Z:\VOASRV\HPCHEM1\MSVOA_U\METHOD\SOMULM031119WMA.M
Quant Title : VOC Analysis
QLast Update : Mon Mar 11 07:10:15 2019
Response via : Initial Calibration

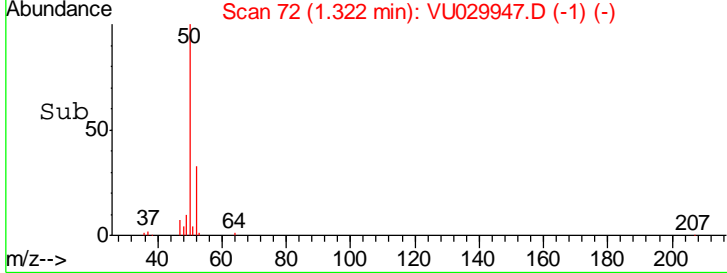
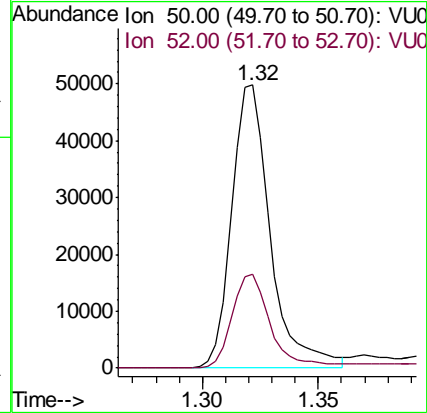
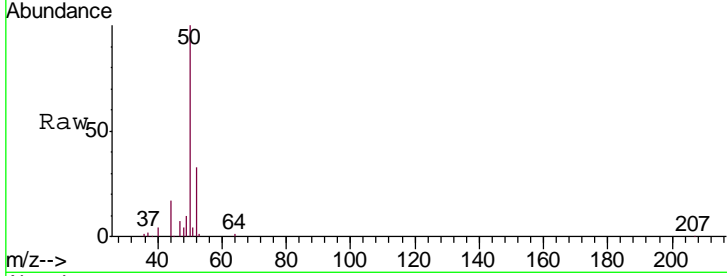




#3
 Chloromethane
 Concen: 9.437 ug/L
 RT: 1.32 min Scan# 72
 Delta R.T. -0.01 min
 Lab File: VU029947.D
 Acq: 10 Mar 2019 14:29

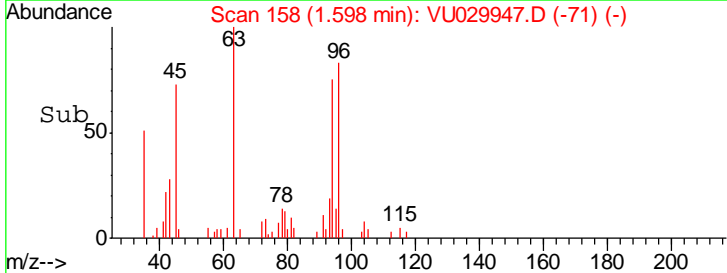
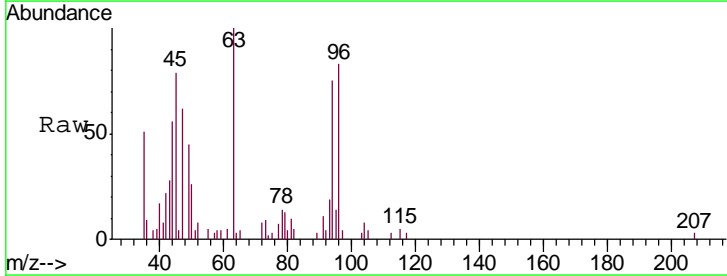
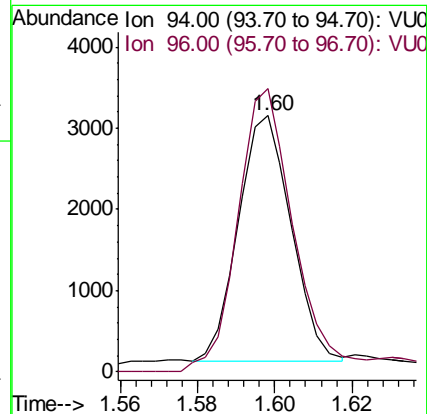
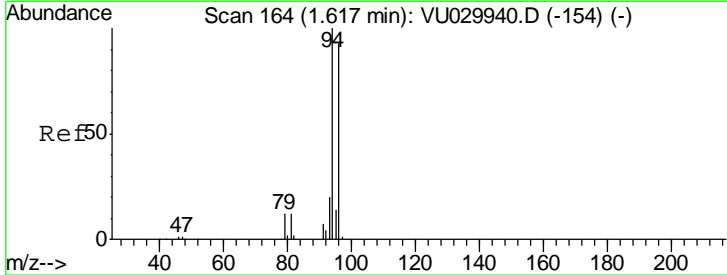
Instrument : MSVOA_U
 ClientSampleId : BFOQ6ME

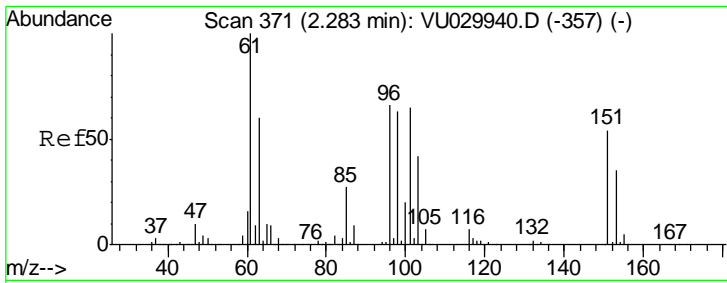
Tgt Ion: 50 Resp: 57488
 Ion Ratio Lower Upper
 50 100
 52 33.1 23.1 42.9



#6
 Bromomethane
 Concen: 2.271 ug/L
 RT: 1.60 min Scan# 158
 Delta R.T. -0.02 min
 Lab File: VU029947.D
 Acq: 10 Mar 2019 14:29

Tgt Ion: 94 Resp: 2842
 Ion Ratio Lower Upper
 94 100
 96 110.4 65.7 121.9





#10

1,1,2-Trichloro-1,2,2-trifluoroethane

Concen: 0.770 ug/L

RT: 2.23 min Scan# 353

Delta R.T. -0.06 min

Lab File: VU029947.D

Acq: 10 Mar 2019 14:29

Instrument :
MSVOA_U
ClientSampled :
BFOQ6ME

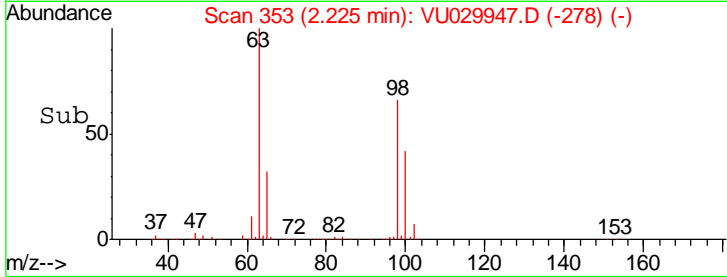
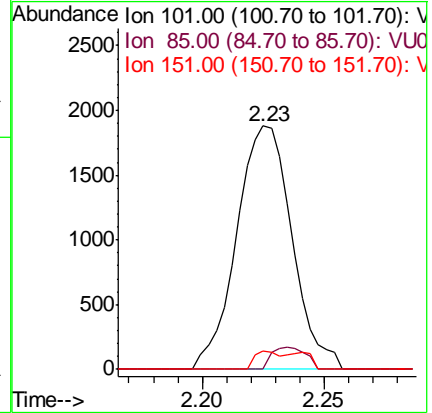
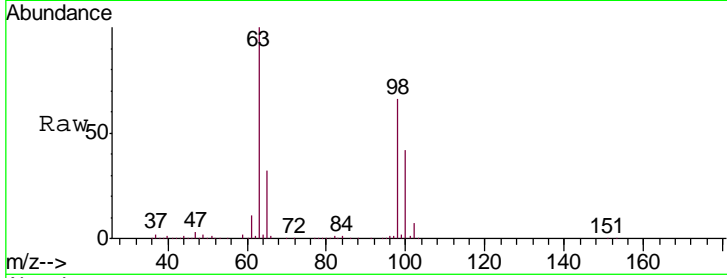
Tgt Ion: 101 Resp: 2963

Ion Ratio Lower Upper

101 100

85 0.0 33.4 50.2#

151 3.2 65.8 98.6#



#12

1,1-Dichloroethene

Concen: 0.682 ug/L

RT: 2.23 min Scan# 353

Delta R.T. -0.05 min

Lab File: VU029947.D

Acq: 10 Mar 2019 14:29

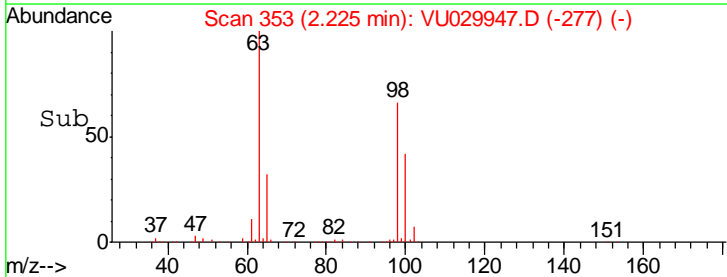
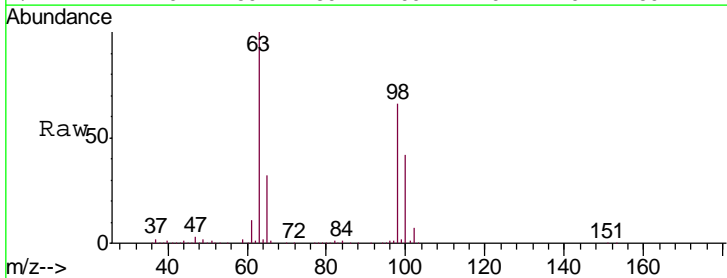
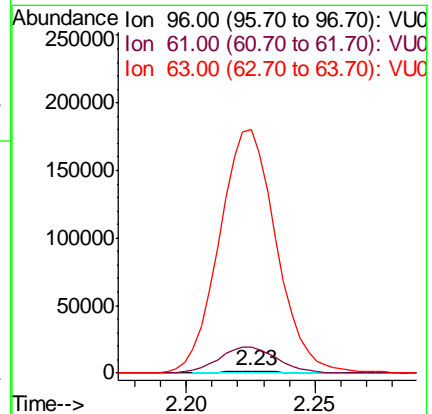
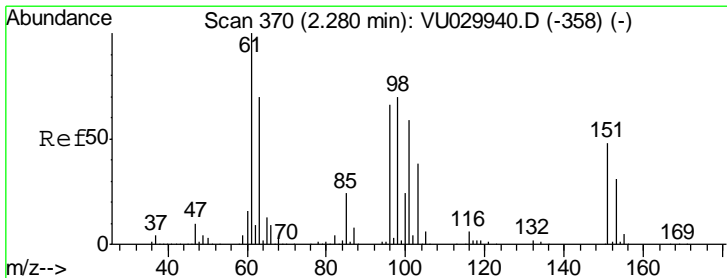
Tgt Ion: 96 Resp: 2547

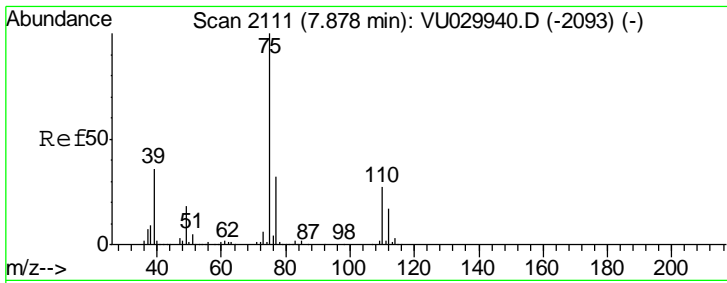
Ion Ratio Lower Upper

96 100

61 1117.5 109.0 202.4#

63 10502.6 88.1 163.5#

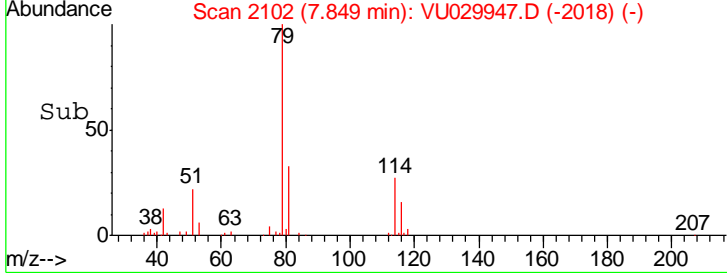
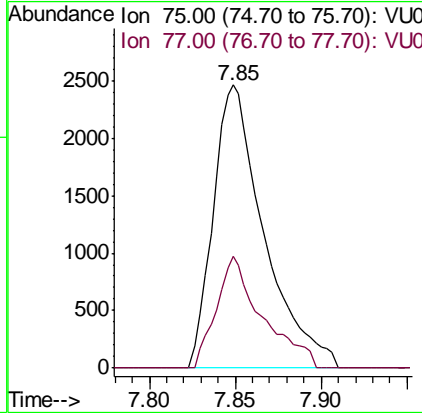
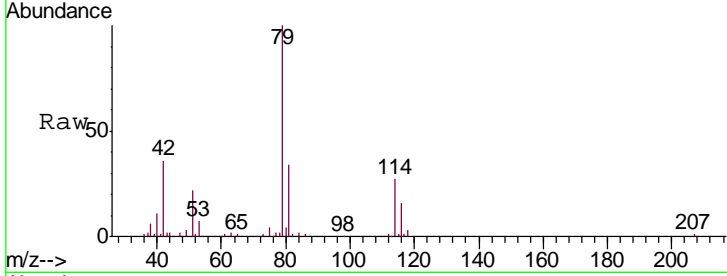




#44
 trans-1,3-Dichloropropene
 Concen: 0.901 ug/L
 RT: 7.85 min Scan# 2102
 Delta R.T. -0.03 min
 Lab File: VU029947.D
 Acq: 10 Mar 2019 14:29

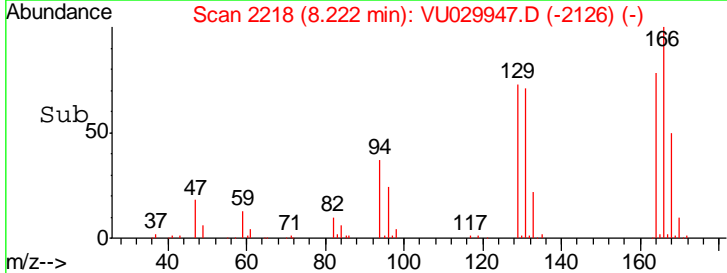
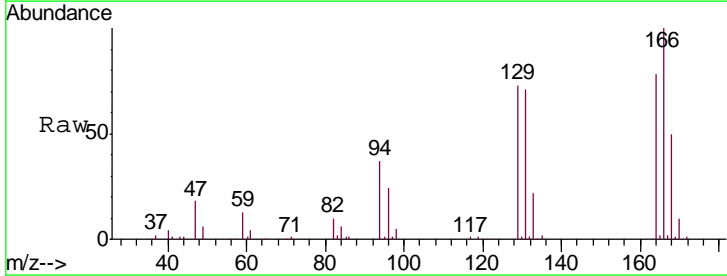
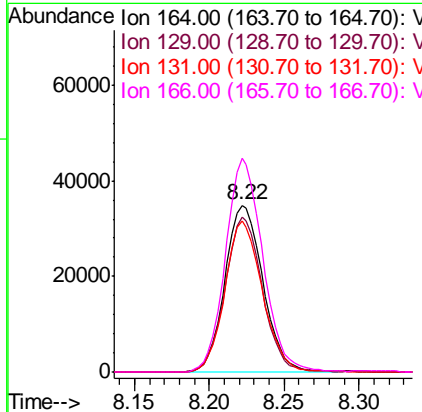
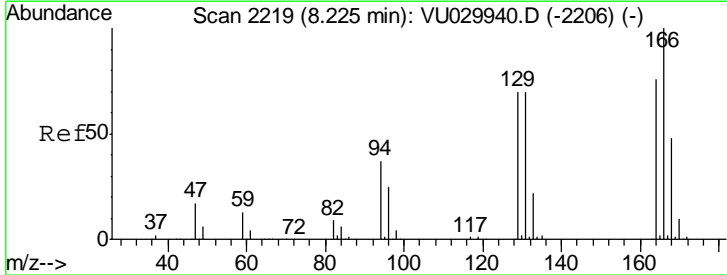
Instrument : MSVOA_U
 ClientSampleId : BFOQ6ME

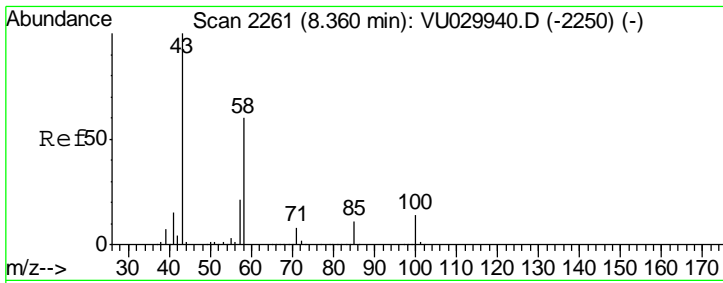
Tgt Ion	Resp	Lower	Upper
75	5056		
77	39.4	21.8	40.6



#46
 Tetrachloroethene
 Concen: 16.760 ug/L
 RT: 8.22 min Scan# 2218
 Delta R.T. -0.00 min
 Lab File: VU029947.D
 Acq: 10 Mar 2019 14:29

Tgt Ion	Resp	Lower	Upper
164	61776		
164	100		
129	93.1	61.0	113.2
131	90.3	60.5	112.3
166	127.8	88.3	163.9

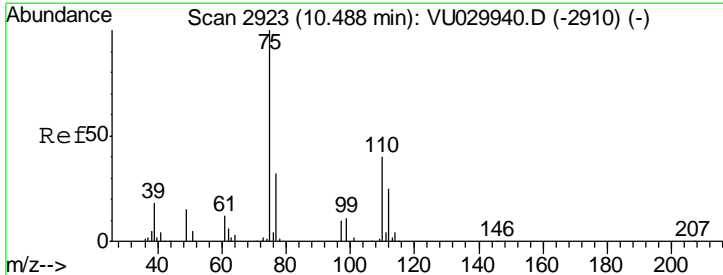
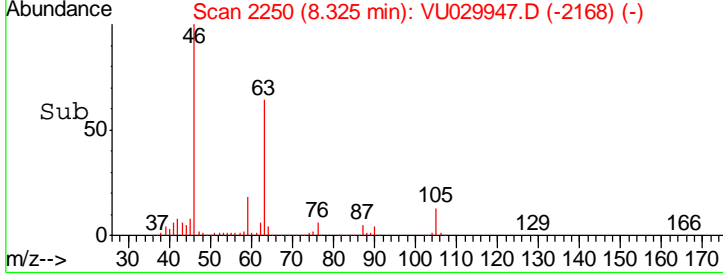
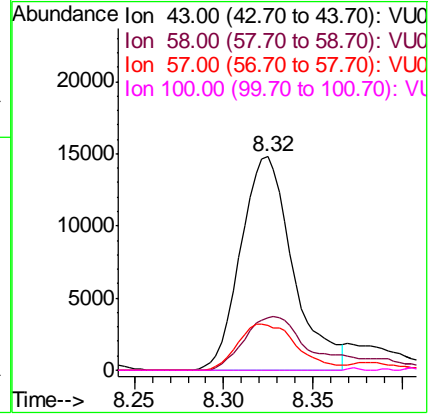
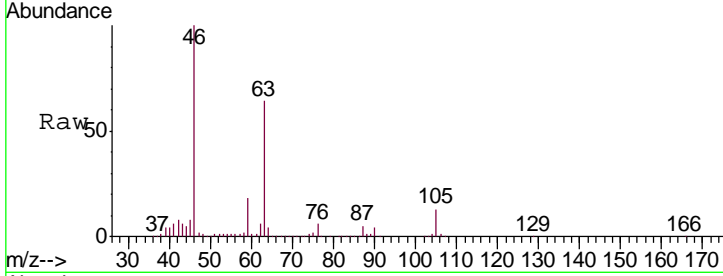




#48
 2-Hexanone
 Concen: 6.478 ug/L
 RT: 8.32 min Scan# 2250
 Delta R.T. -0.04 min
 Lab File: VU029947.D
 Acq: 10 Mar 2019 14:29

Instrument : MSVOA_U
 ClientSampled : BFOQ6ME

Tgt Ion	Resp	Lower	Upper
43	30220		
58	31.0	49.2	73.8#
57	24.5	16.6	25.0
100	0.0	11.4	17.0#



#59
 1,2,3-Trichloropropane
 Concen: 5.522 ug/L
 RT: 11.49 min Scan# 3233
 Delta R.T. 1.00 min
 Lab File: VU029947.D
 Acq: 10 Mar 2019 14:29

Tgt Ion	Resp	Lower	Upper
75	30292		
77	36.8	26.1	39.1

