

Data Path : Z:\voasrv\HPCHEM1\MSVOA_U\Data\VU031221\
 Data File : VU042586.D
 Acq On : 12 Mar 2021 00:43
 Operator : SY/MD
 Sample : M1654-05
 Misc : 25.0mL/MSVOA_U/WATER
 ALS Vial : 27 Sample Multiplier: 1

Instrument :
 MSVOA_U
 ClientSampleId :
 C0B92

Quant Time: Mar 12 02:45:29 2021
 Quant Method : Z:\voasrv\HPCHEM1\MSVOA_U\Method\SOMUTR030221WMA.M
 Quant Title : TRACE VOA SOM01.0
 QLast Update : Fri Mar 12 02:42:43 2021
 Response via : Initial Calibration

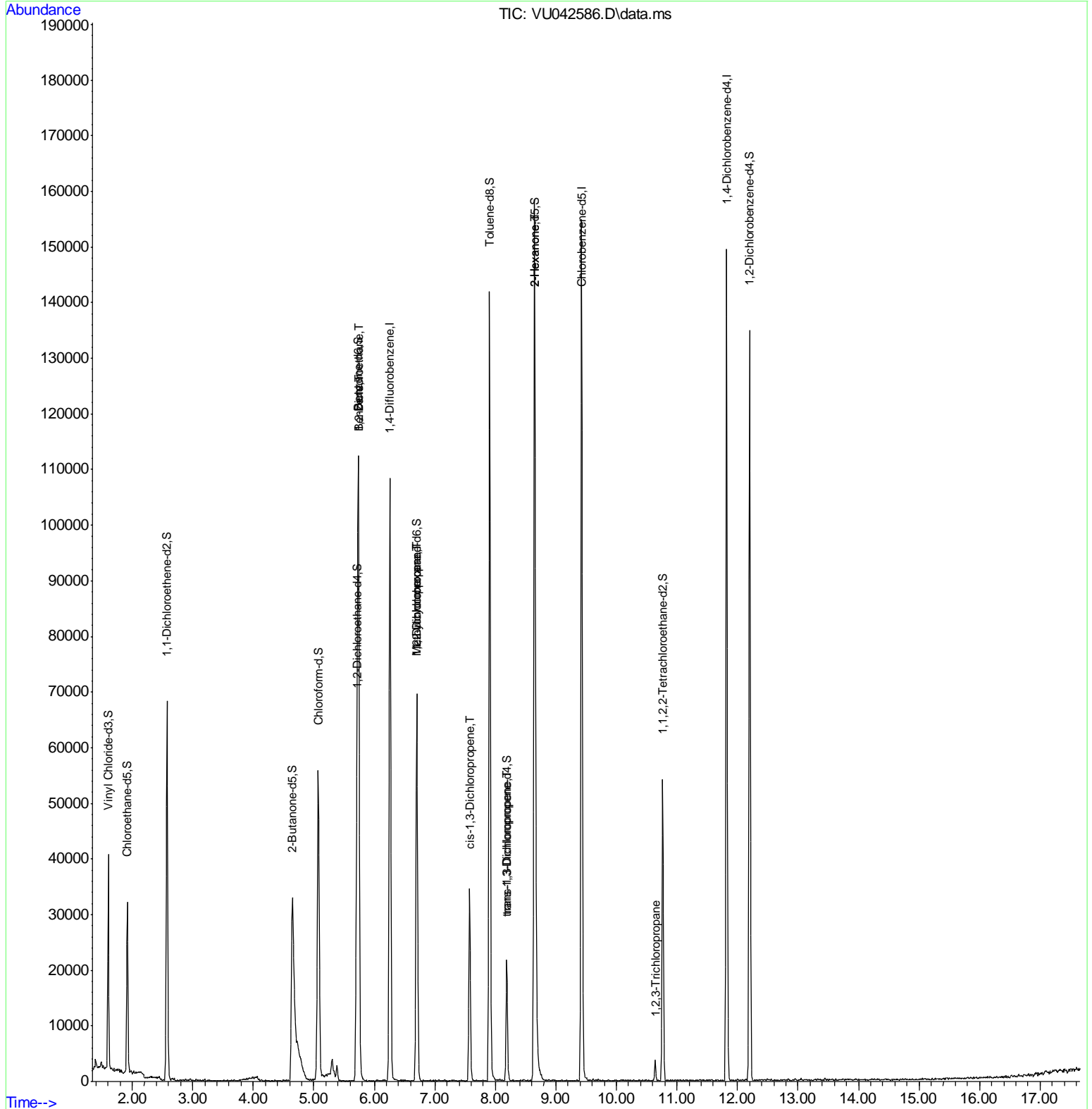
| Compound | R.T. | QIon | Response | Conc | Units | Dev(Min) |
|-------------------------------|--------|----------------|----------|-------|---------|----------|
| ----- | | | | | | |
| Internal Standards | | | | | | |
| 1) 1,4-Difluorobenzene | 6.260 | 114 | 82255 | 5.00 | ug/L | 0.00 |
| 28) Chlorobenzene-d5 | 9.423 | 117 | 79764 | 5.00 | ug/L | 0.00 |
| 60) 1,4-Dichlorobenzene-d4 | 11.819 | 152 | 37107 | 5.00 | ug/L | 0.00 |
| System Monitoring Compounds | | | | | | |
| 4) Vinyl Chloride-d3 | 1.604 | 65 | 24587 | 4.48 | ug/L | 0.00 |
| Spiked Amount | 5.000 | Range 40 - 130 | Recovery | = | 89.60% | |
| 7) Chloroethane-d5 | 1.919 | 69 | 20455 | 4.93 | ug/L | 0.00 |
| Spiked Amount | 5.000 | Range 65 - 130 | Recovery | = | 98.60% | |
| 11) 1,1-Dichloroethene-d2 | 2.575 | 63 | 41188 | 3.33 | ug/L | 0.00 |
| Spiked Amount | 5.000 | Range 60 - 125 | Recovery | = | 66.60% | |
| 20) 2-Butanone-d5 | 4.646 | 46 | 68200 | 37.88 | ug/L | 0.00 |
| Spiked Amount | 50.000 | Range 40 - 130 | Recovery | = | 75.76% | |
| 24) Chloroform-d | 5.073 | 84 | 50249 | 4.63 | ug/L | 0.00 |
| Spiked Amount | 5.000 | Range 70 - 125 | Recovery | = | 92.60% | |
| 26) 1,2-Dichloroethane-d4 | 5.713 | 65 | 34849 | 5.22 | ug/L | 0.00 |
| Spiked Amount | 5.000 | Range 70 - 130 | Recovery | = | 104.40% | |
| 32) Benzene-d6 | 5.735 | 84 | 90787 | 4.64 | ug/L | 0.00 |
| Spiked Amount | 5.000 | Range 70 - 125 | Recovery | = | 92.80% | |
| 36) 1,2-Dichloropropane-d6 | 6.700 | 67 | 29450 | 4.67 | ug/L | 0.00 |
| Spiked Amount | 5.000 | Range 60 - 140 | Recovery | = | 93.40% | |
| 41) Toluene-d8 | 7.906 | 98 | 87879 | 4.60 | ug/L | 0.00 |
| Spiked Amount | 5.000 | Range 70 - 130 | Recovery | = | 92.00% | |
| 43) trans-1,3-Dichloroprop... | 8.186 | 79 | 11682 | 3.96 | ug/L | 0.00 |
| Spiked Amount | 5.000 | Range 55 - 130 | Recovery | = | 79.20% | |
| 46) 2-Hexanone-d5 | 8.645 | 63 | 59529 | 42.18 | ug/L | 0.00 |
| Spiked Amount | 50.000 | Range 45 - 130 | Recovery | = | 84.36% | |
| 57) 1,1,2,2-Tetrachloroeth... | 10.764 | 84 | 25187 | 4.48 | ug/L | 0.00 |
| Spiked Amount | 5.000 | Range 65 - 120 | Recovery | = | 89.60% | |
| 64) 1,2-Dichlorobenzene-d4 | 12.201 | 152 | 32926 | 4.89 | ug/L | 0.00 |
| Spiked Amount | 5.000 | Range 80 - 120 | Recovery | = | 97.80% | |
| ----- | | | | | | |
| Target Compounds | | | | | | Qvalue |
| 27) 1,2-Dichloroethane | 5.739 | 62 | 565 | 0.06 | ug/L # | 75 |
| 33) Benzene | 5.739 | 78 | 690 | 0.03 | ug/L | 100 |
| 35) Methylcyclohexane | 6.697 | 83 | 6858 | 0.65 | ug/L # | 14 |
| 37) 1,2-Dichloropropane | 6.697 | 63 | 3692 | 0.55 | ug/L # | 87 |
| 39) cis-1,3-Dichloropropene | 7.571 | 75 | 913 | 0.09 | ug/L | 90 |
| 44) trans-1,3-Dichloropropene | 8.189 | 75 | 508 | 0.06 | ug/L | 95 |
| 48) 2-Hexanone | 8.645 | 43 | 9134 | 2.11 | ug/L # | 73 |
| 59) 1,2,3-Trichloropropane | 10.642 | 75 | 742 | 0.15 | ug/L # | 42 |
| ----- | | | | | | |

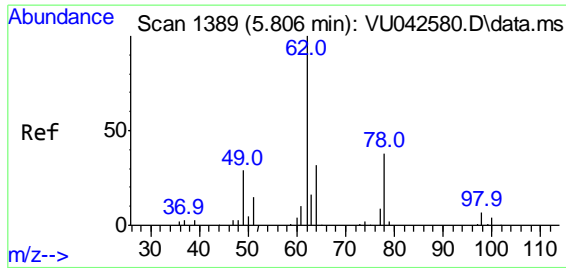
(#) = qualifier out of range (m) = manual integration (+) = signals summed

Data Path : Z:\voasrv\HPCHEM1\MSVOA_U\Data\VU031221\
 Data File : VU042586.D
 Acq On : 12 Mar 2021 00:43
 Operator : SY/MD
 Sample : M1654-05
 Misc : 25.0mL/MSVOA_U/WATER
 ALS Vial : 27 Sample Multiplier: 1

Instrument :
 MSVOA_U
 Client Sampled :
 C0B92

Quant Time: Mar 12 02:45:29 2021
 Quant Method : Z:\voasrv\HPCHEM1\MSVOA_U\Method\SOMUTR030221WMA.M
 Quant Title : TRACE VOA SOM01.0
 QLast Update : Fri Mar 12 02:42:43 2021
 Response via : Initial Calibration

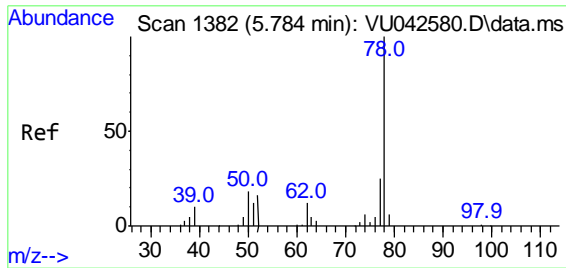
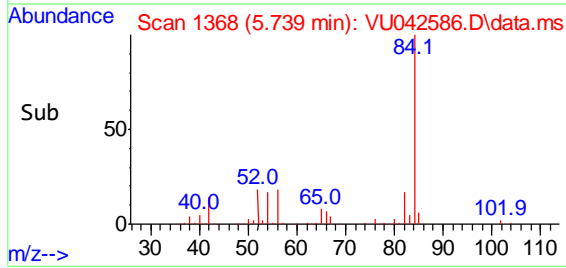
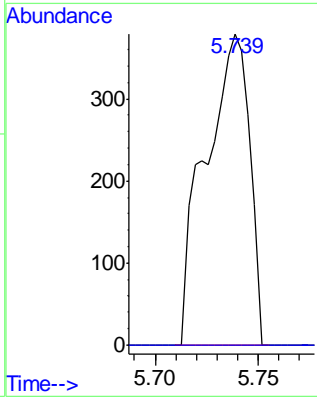
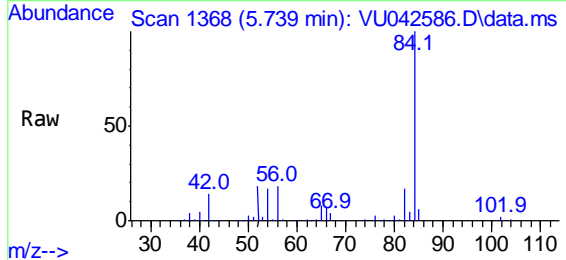




#27
 1,2-Dichloroethane
 Concen: 0.06 ug/L
 RT: 5.739 min Scan# 1368
 Delta R.T. -0.067 min
 Lab File: VU042586.D
 Acq: 12 Mar 2021 00:43

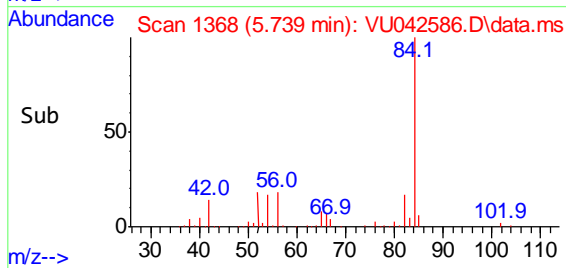
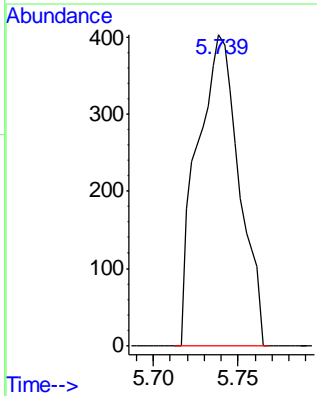
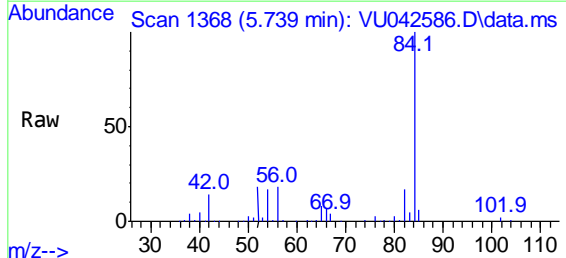
Instrument :
 MSVOA_U
 ClientSampled :
 C0B92

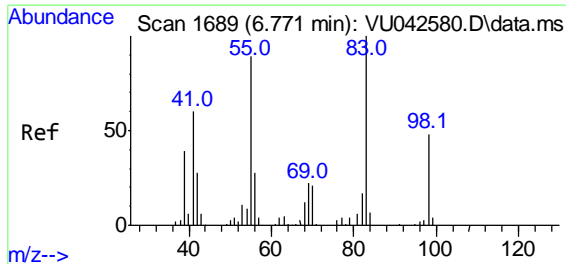
Tgt Ion: 62 Resp: 565
 Ion Ratio Lower Upper
 62 100
 98 0.0 7.3 10.9#



#33
 Benzene
 Concen: 0.03 ug/L
 RT: 5.739 min Scan# 1368
 Delta R.T. -0.045 min
 Lab File: VU042586.D
 Acq: 12 Mar 2021 00:43

Tgt Ion: 78 Resp: 690



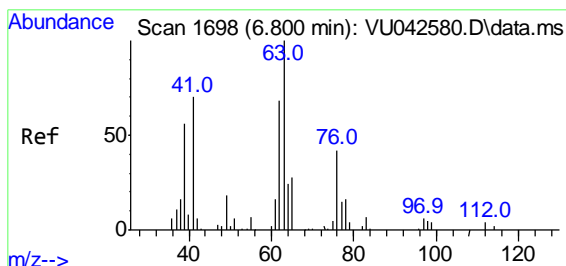
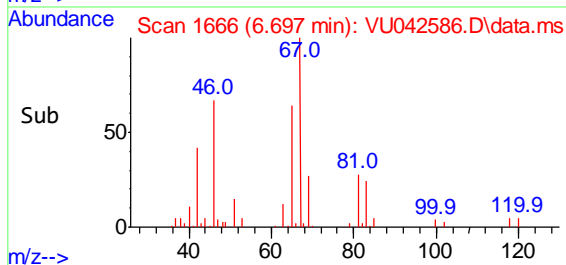
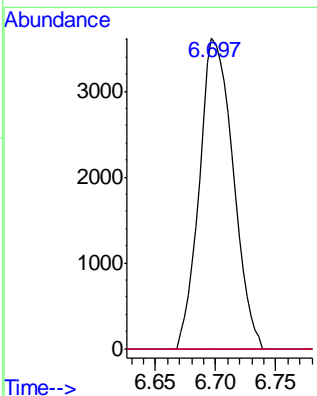
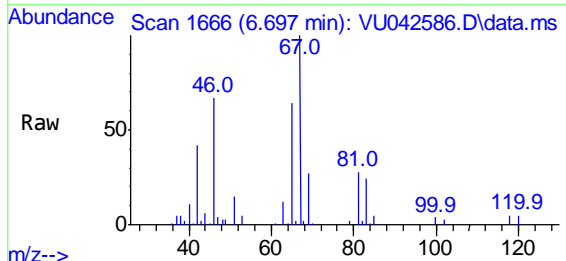


#35
 Methylcyclohexane
 Concen: 0.65 ug/L
 RT: 6.697 min Scan# 1666
 Delta R.T. -0.074 min
 Lab File: VU042586.D
 Acq: 12 Mar 2021 00:43

Instrument :
 MSVOA_U
 ClientSampled :
 C0B92

Tgt Ion: 83 Resp: 6858

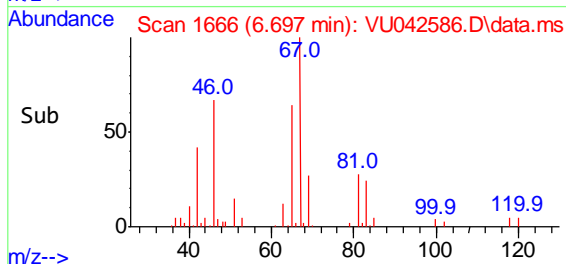
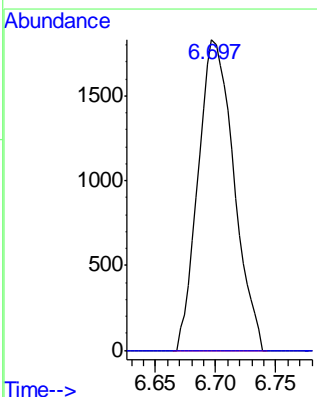
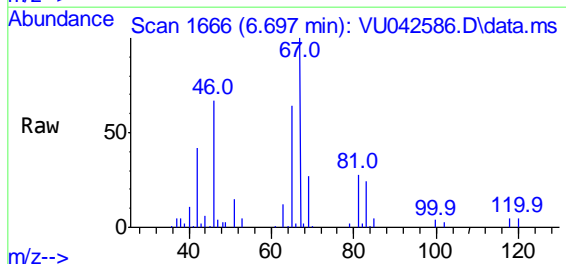
| Ion | Ratio | Lower | Upper |
|-----|-------|-------|--------|
| 83 | 100 | | |
| 55 | 0.0 | 68.2 | 102.4# |
| 98 | 0.0 | 39.7 | 59.5# |

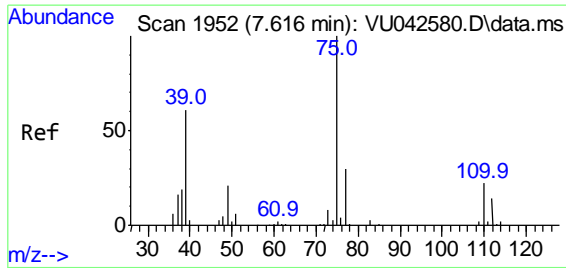


#37
 1,2-Dichloropropane
 Concen: 0.55 ug/L
 RT: 6.697 min Scan# 1666
 Delta R.T. -0.103 min
 Lab File: VU042586.D
 Acq: 12 Mar 2021 00:43

Tgt Ion: 63 Resp: 3692

| Ion | Ratio | Lower | Upper |
|-----|-------|-------|-------|
| 63 | 100 | | |
| 112 | 0.0 | 3.4 | 5.0# |

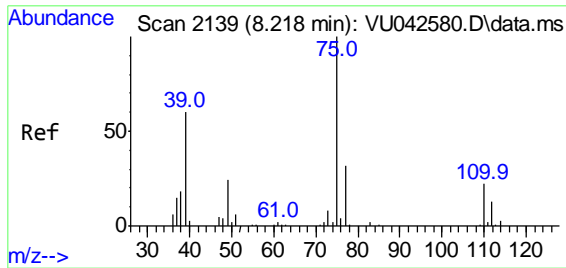
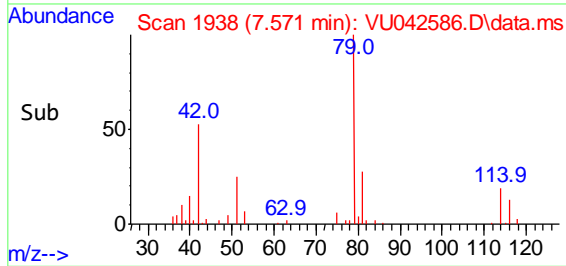
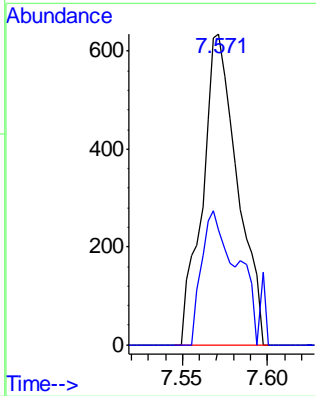
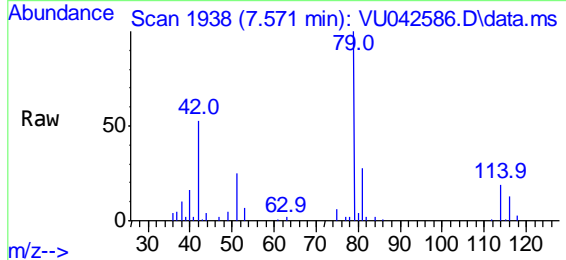




#39
 cis-1,3-Dichloropropene
 Concen: 0.09 ug/L
 RT: 7.571 min Scan# 1938
 Delta R.T. -0.045 min
 Lab File: VU042586.D
 Acq: 12 Mar 2021 00:43

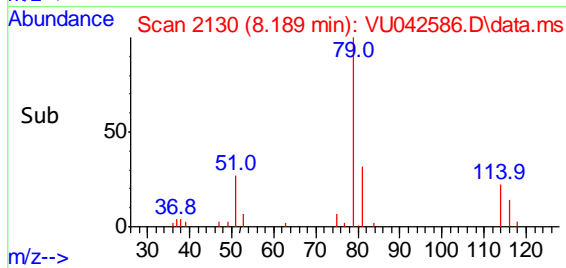
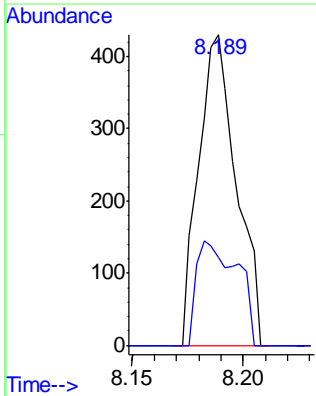
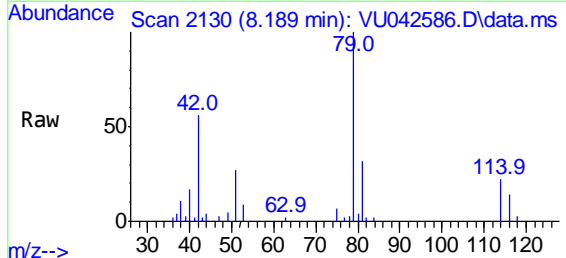
Instrument :
 MSVOA_U
 ClientSampled :
 C0B92

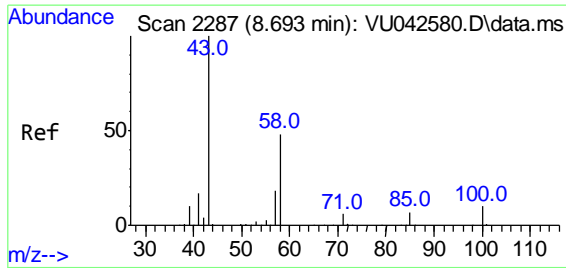
Tgt Ion: 75 Resp: 913
 Ion Ratio Lower Upper
 75 100
 77 36.9 22.0 40.8



#44
 trans-1,3-Dichloropropene
 Concen: 0.06 ug/L
 RT: 8.189 min Scan# 2130
 Delta R.T. -0.029 min
 Lab File: VU042586.D
 Acq: 12 Mar 2021 00:43

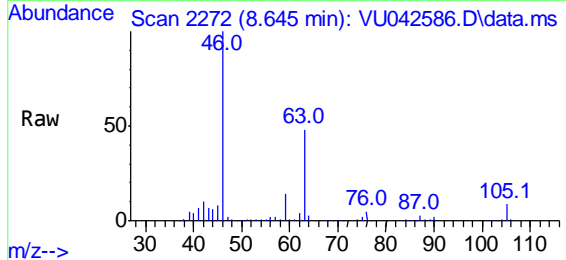
Tgt Ion: 75 Resp: 508
 Ion Ratio Lower Upper
 75 100
 77 28.1 21.8 40.4





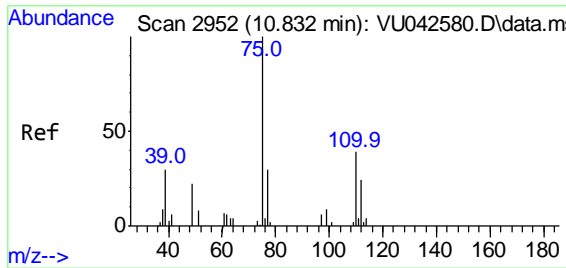
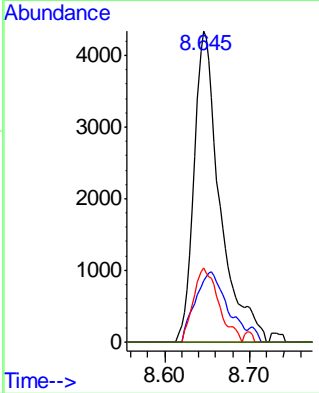
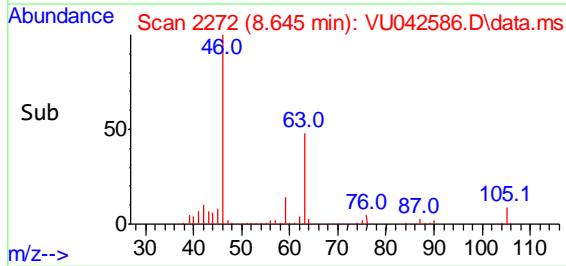
#48
 2-Hexanone
 Concen: 2.11 ug/L
 RT: 8.645 min Scan# 2272
 Delta R.T. -0.048 min
 Lab File: VU042586.D
 Acq: 12 Mar 2021 00:43

Instrument :
 MSVOA_U
ClientSampled :
 C0B92

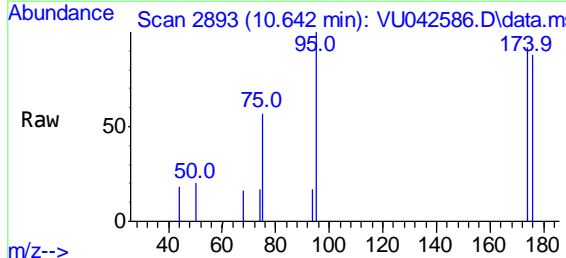


Tgt Ion: 43 Resp: 9134

| Ion | Ratio | Lower | Upper |
|-----|-------|-------|-------|
| 43 | 100 | | |
| 58 | 27.6 | 40.6 | 61.0# |
| 57 | 23.2 | 14.9 | 22.3# |
| 100 | 0.0 | 8.6 | 12.8# |



#59
 1,2,3-Trichloropropane
 Concen: 0.15 ug/L
 RT: 10.642 min Scan# 2893
 Delta R.T. -0.190 min
 Lab File: VU042586.D
 Acq: 12 Mar 2021 00:43



Tgt Ion: 75 Resp: 742

| Ion | Ratio | Lower | Upper |
|-----|-------|-------|-------|
| 75 | 100 | | |
| 77 | 0.0 | 26.0 | 39.0# |

