

Data Path : Z:\voasrv\HPCHEM1\MSVOA_U\Data\VU031224\
 Data File : VU058061.D
 Acq On : 12 Mar 2024 15:43
 Operator : MD/SY
 Sample : P1715-14
 Misc : 25.0mL/MSVOA_U/WATER
 ALS Vial : 18 Sample Multiplier: 1

Instrument :
 MSVOA_U
ClientSampleId :

Quant Time: Mar 13 02:02:23 2024
 Quant Method : Z:\voasrv\HPCHEM1\MSVOA_U\Method\SFAMUTRO22924WMA.M
 Quant Title : TRACE VOA SFAM1.0
 QLast Update : Wed Mar 13 01:58:39 2024
 Response via : Initial Calibration

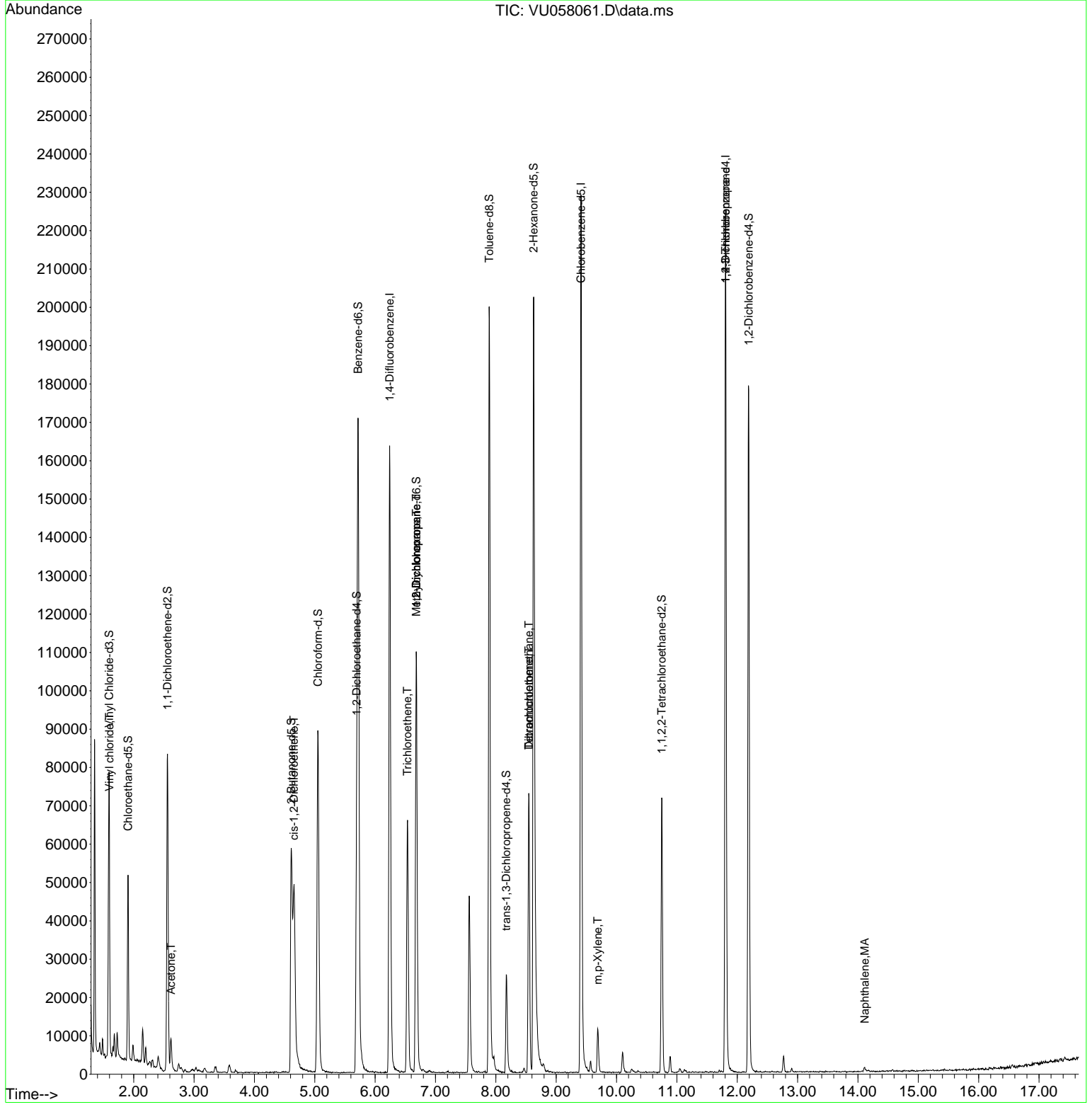
Compound	R.T.	QI on	Response	Conc	Units	Dev(Min)
Internal Standards						
1) 1,4-Difluorobenzene	6.242	114	131264	5.000	ug/L	0.00
28) Chlorobenzene-d5	9.412	117	129142	5.000	ug/L	0.00
58) 1,4-Dichlorobenzene-d4	11.807	152	57115	5.000	ug/L	0.00
System Monitoring Compounds						
4) Vinyl chloride-d3	1.592	65	33772	3.576	ug/L	0.00
Spike Amount	5.000	Range	40 - 130	Recovery	=	71.600%
7) Chloroethane-d5	1.907	69	32787	4.224	ug/L	0.00
Spike Amount	5.000	Range	65 - 130	Recovery	=	84.400%
11) 1,1-Dichloroethene-d2	2.560	65	16025	3.921	ug/L	0.00
Spike Amount	5.000	Range	60 - 125	Recovery	=	78.400%
20) 2-Butanone-d5	4.612	46	90751	58.320	ug/L	0.00
Spike Amount	50.000	Range	40 - 130	Recovery	=	116.640%
24) Chloroform-d	5.052	84	85001	4.759	ug/L	0.00
Spike Amount	5.000	Range	70 - 125	Recovery	=	95.200%
26) 1,2-Dichloroethane-d4	5.695	65	42413	5.240	ug/L	0.00
Spike Amount	5.000	Range	70 - 130	Recovery	=	104.800%
32) Benzene-d6	5.718	84	166322	4.419	ug/L	0.00
Spike Amount	5.000	Range	70 - 125	Recovery	=	88.400%
36) 1,2-Dichloropropane-d6	6.682	67	53198	4.650	ug/L	0.00
Spike Amount	5.000	Range	60 - 140	Recovery	=	93.000%
41) Toluene-d8	7.891	98	137174	4.023	ug/L	0.00
Spike Amount	5.000	Range	70 - 130	Recovery	=	80.400%
43) trans-1,3-Dichloropropene	8.174	79	16851	4.283	ug/L	0.00
Spike Amount	5.000	Range	55 - 130	Recovery	=	85.600%
46) 2-Hexanone-d5	8.627	63	75306	57.010	ug/L	0.00
Spike Amount	50.000	Range	45 - 130	Recovery	=	114.020%
56) 1,1,2,2-Tetrachloroethene	10.750	84	37691	5.372	ug/L	0.00
Spike Amount	5.000	Range	65 - 120	Recovery	=	107.400%
66) 1,2-Dichlorobenzene-d4	12.190	152	47578	5.058	ug/L	0.00
Spike Amount	5.000	Range	80 - 120	Recovery	=	101.200%
Target Compounds						
5) Vinyl chloride	1.599	62	2361	0.236	ug/L #	79
13) Acetone	2.618	43	10265	8.864	ug/L	96
22) cis-1,2-Dichloroethene	4.657	96	22075	2.326	ug/L	97
34) Trichloroethene	6.537	95	23920	2.294	ug/L	98
35) Methylcyclohexane	6.685	83	12748	0.798	ug/L #	18
37) 1,2-Dichloropropane	6.682	63	5941	0.581	ug/L #	89
47) Tetrachloroethene	8.547	164	16196	2.239	ug/L	93
49) Dibromochloromethane	8.547	129	16553	2.308	ug/L #	10
53) m,p-Xylene	9.688	106	3554	0.215	ug/L	85
61) 1,2,3-Trichloropropane	11.807	75	8027	1.716	ug/L #	69
71) Naphthalene	14.113	128	1619	0.127	ug/L #	77

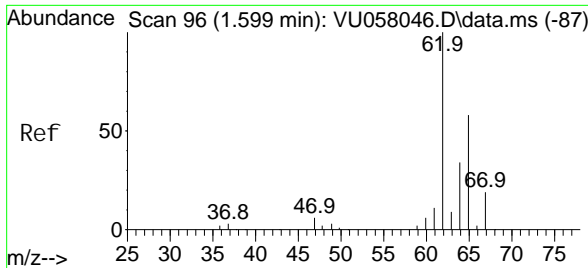
(#) = qualifier out of range (m) = manual integration (+) = signals summed

Data Path : Z:\voasrv\HPCHEM1\MSVOA_U\Data\VU031224\
 Data File : VU058061.D
 Acq On : 12 Mar 2024 15:43
 Operator : MD/SY
 Sample : P1715-14
 Misc : 25.0mL/MSVOA_U/WATER
 ALS Vial : 18 Sample Multiplier: 1

Instrument :
 MSVOA_U
 ClientSampleId :

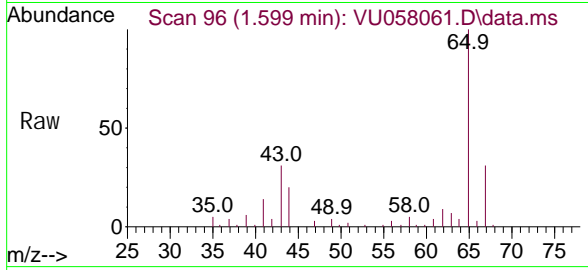
Quant Time: Mar 13 02:02:23 2024
 Quant Method : Z:\voasrv\HPCHEM1\MSVOA_U\Method\SFAMUTRO22924WMA.M
 Quant Title : TRACE VOA SFAM1.0
 QLast Update : Wed Mar 13 01:58:39 2024
 Response via : Initial Calibration



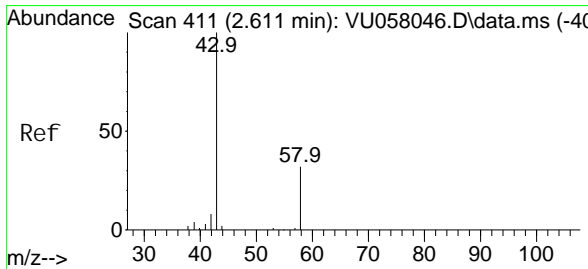
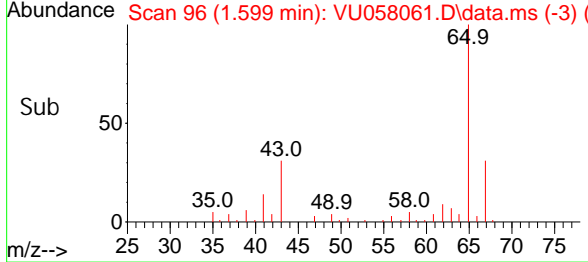
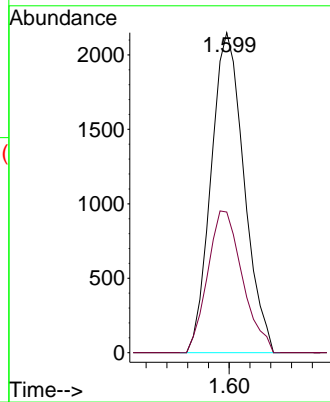


#5
 Vinyl chloride
 Concen: 0.236 ug/L
 RT: 1.599 min Scan# 90
 Delta R.T. 0.000 min
 Lab File: VU058061.D
 Acq: 12 Mar 2024 15:43

Instrument : MSVOA_U
 ClientSampleId :

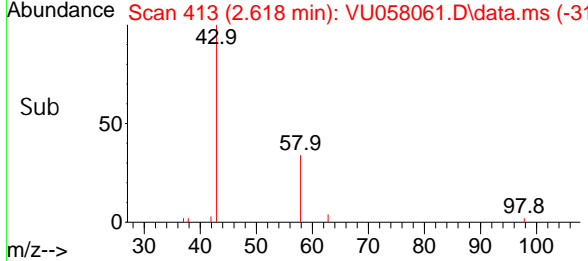
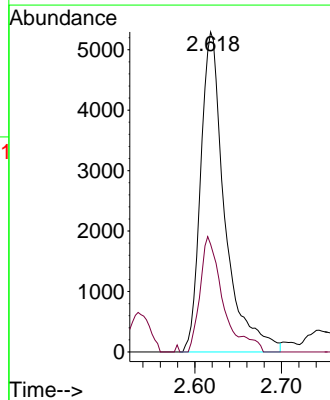
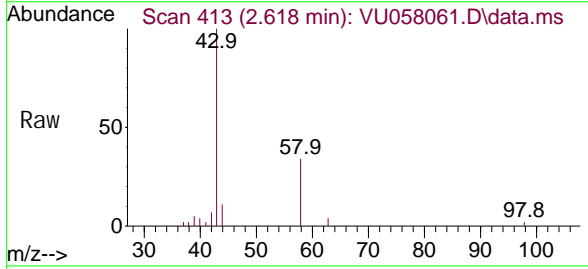


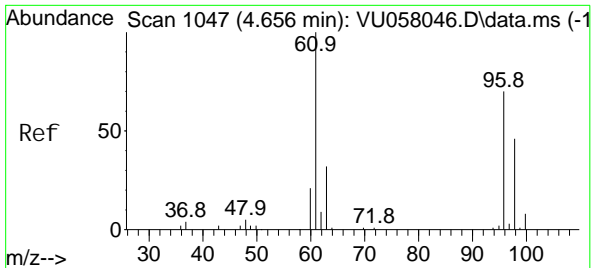
Tgt Ion: 62 Resp: 2361
 Ion Ratio Lower Upper
 62 100
 64 44.0 22.5 41.7#



#13
 Acetone
 Concen: 8.864 ug/L
 RT: 2.618 min Scan# 413
 Delta R.T. 0.007 min
 Lab File: VU058061.D
 Acq: 12 Mar 2024 15:43

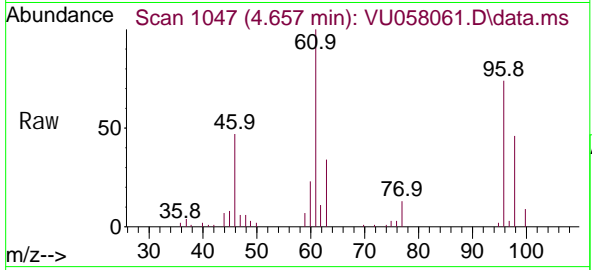
Tgt Ion: 43 Resp: 10265
 Ion Ratio Lower Upper
 43 100
 58 34.1 0.0 63.6





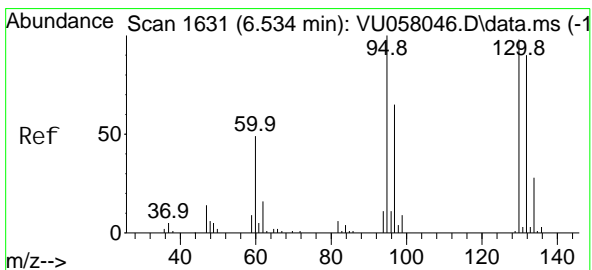
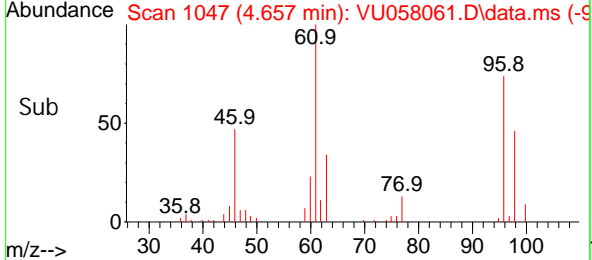
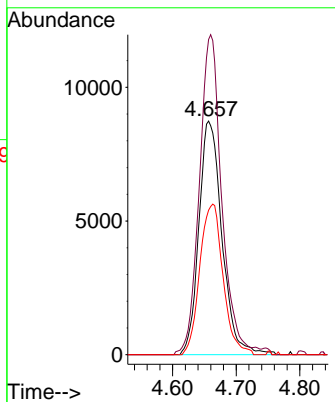
#22
 cis-1,2-Dichloroethene
 Concen: 2.326 ug/L
 RT: 4.657 min Scan# 1047
 Delta R.T. 0.000 min
 Lab File: VU058061.D
 Acq: 12 Mar 2024 15:43

Instrument : MSVOA_U
 ClientSampleId :

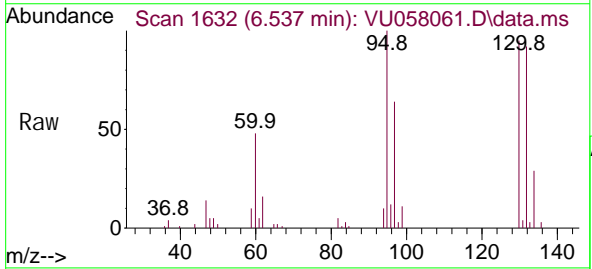


Tgt Ion: 96 Resp: 22075

Ion	Ratio	Lower	Upper
96	100		
61	134.9	97.2	180.4
98	61.8	45.5	84.5

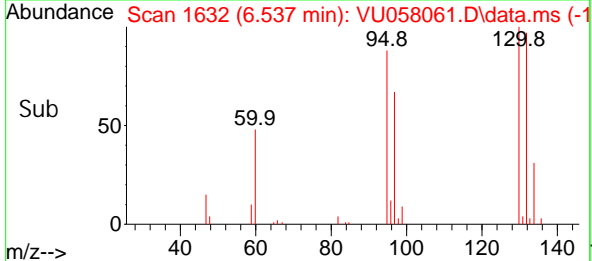
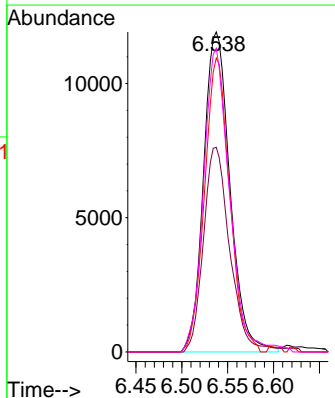


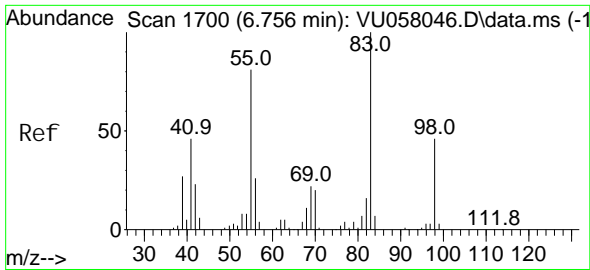
#34
 Trichloroethene
 Concen: 2.294 ug/L
 RT: 6.537 min Scan# 1632
 Delta R.T. 0.003 min
 Lab File: VU058061.D
 Acq: 12 Mar 2024 15:43



Tgt Ion: 95 Resp: 23920

Ion	Ratio	Lower	Upper
95	100		
97	64.0	45.3	84.1
132	91.9	63.1	117.1
130	94.9	67.6	125.6

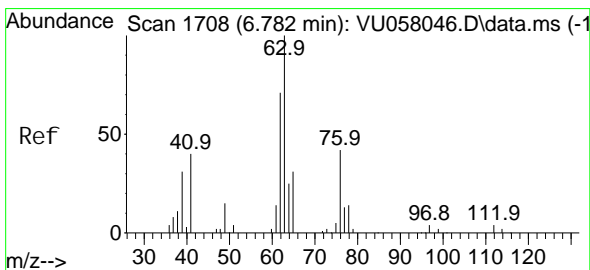
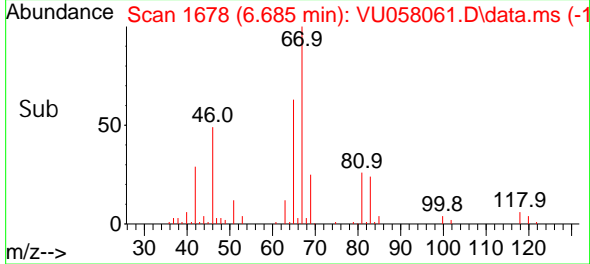
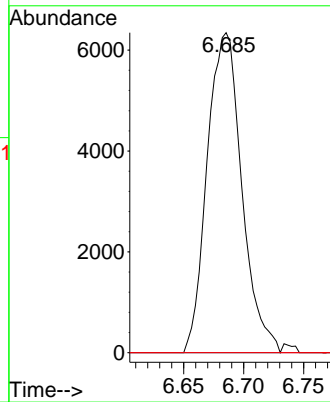
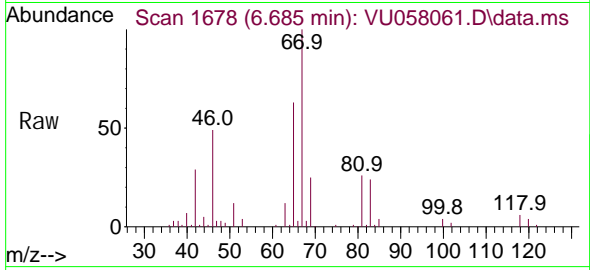




#35
 Methyl cycl ohexane
 Concen: 0.798 ug/L
 RT: 6.685 min Scan# 1678
 Delta R.T. -0.071 min
 Lab File: VU058061.D
 Acq: 12 Mar 2024 15:43

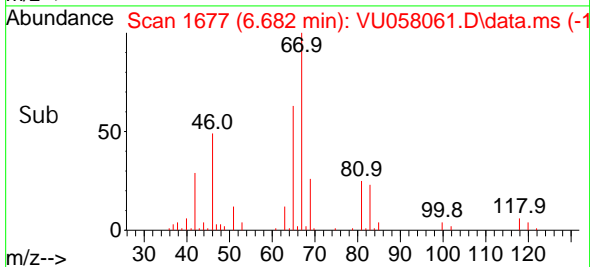
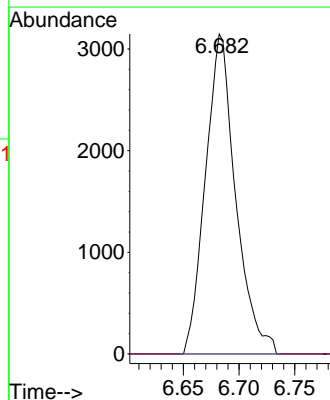
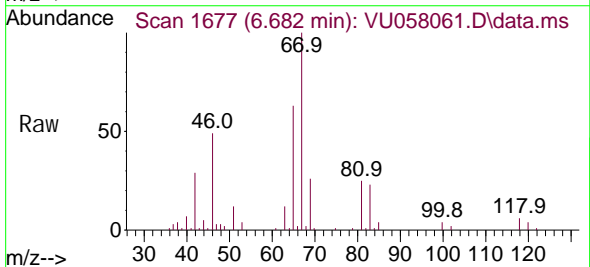
Instrument : MSVOA_U
 ClientSampleId :

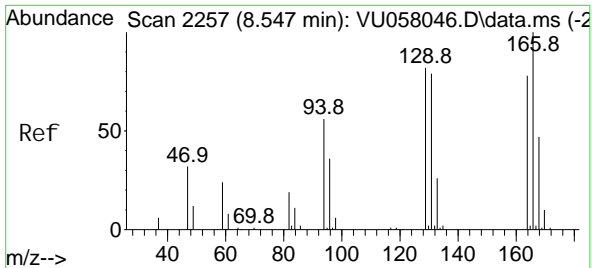
Tgt Ion: 83 Resp: 12748
 Ion Ratio Lower Upper
 83 100
 55 0.0 63.0 94.6#
 98 0.0 36.2 54.4#



#37
 1,2-Di chl oropropane
 Concen: 0.581 ug/L
 RT: 6.682 min Scan# 1677
 Delta R.T. -0.100 min
 Lab File: VU058061.D
 Acq: 12 Mar 2024 15:43

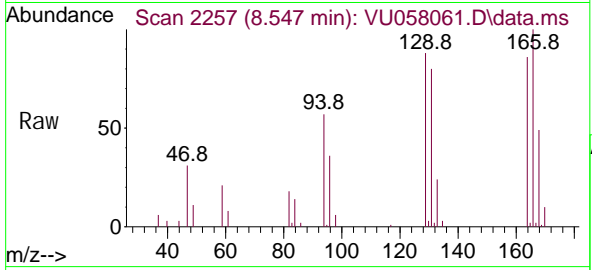
Tgt Ion: 63 Resp: 5941
 Ion Ratio Lower Upper
 63 100
 112 0.0 3.0 4.4#



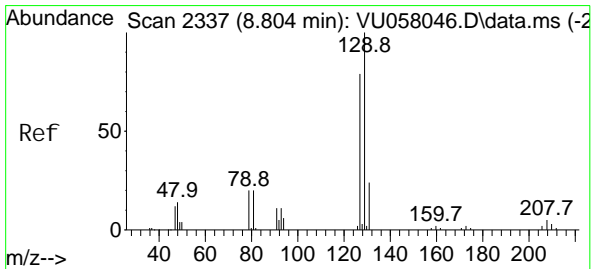
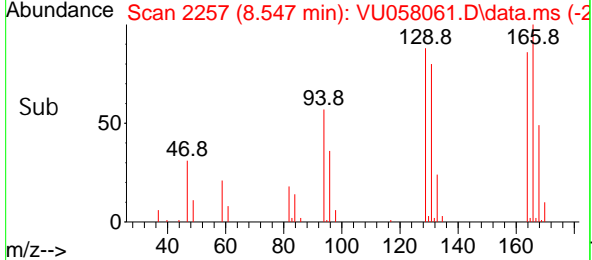
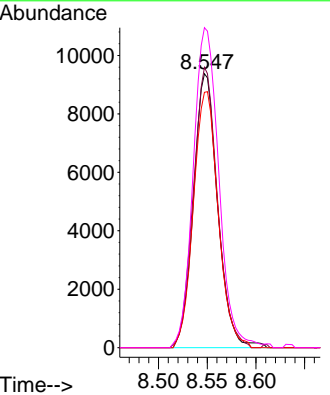


#47
 Tetrachloroethene
 Concen: 2.239 ug/L
 RT: 8.547 min Scan# 2257
 Delta R.T. 0.000 min
 Lab File: VU058061.D
 Acq: 12 Mar 2024 15:43

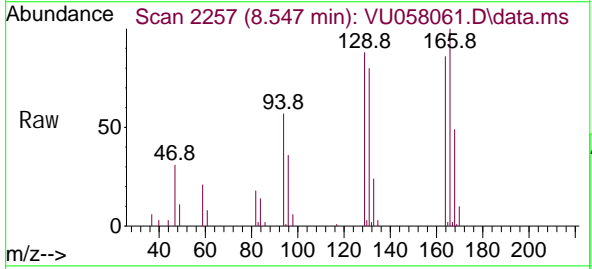
Instrument : MSVOA_U
 ClientSampleId :



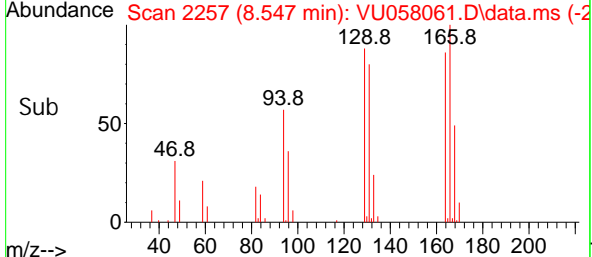
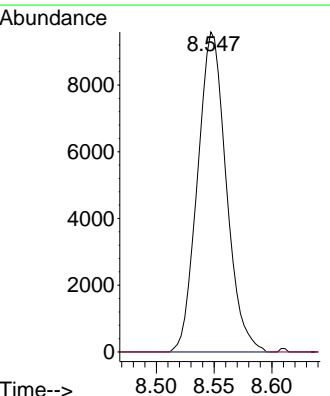
Tgt Ion: 164 Resp: 16196
 Ion Ratio Lower Upper
 164 100
 129 102.3 69.3 128.7
 131 93.2 69.9 129.9
 166 116.8 90.1 167.3

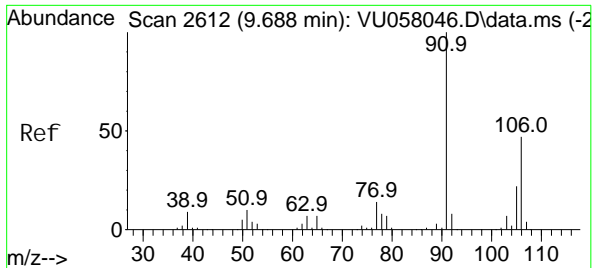


#49
 Dibromochloromethane
 Concen: 2.308 ug/L
 RT: 8.547 min Scan# 2257
 Delta R.T. -0.257 min
 Lab File: VU058061.D
 Acq: 12 Mar 2024 15:43



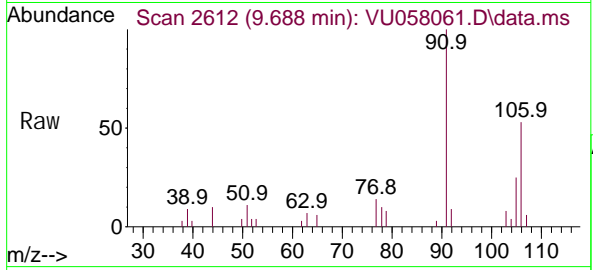
Tgt Ion: 129 Resp: 16553
 Ion Ratio Lower Upper
 129 100
 127 0.0 55.2 102.6#



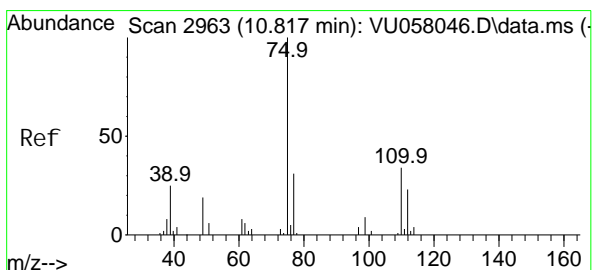
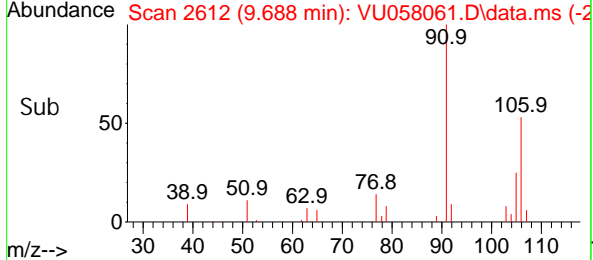
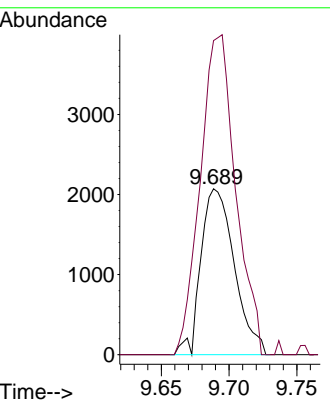


#53
 m, p-Xyl ene
 Concen: 0.215 ug/L
 RT: 9.688 min Scan# 2612
 Delta R.T. 0.000 min
 Lab File: VU058061.D
 Acq: 12 Mar 2024 15:43

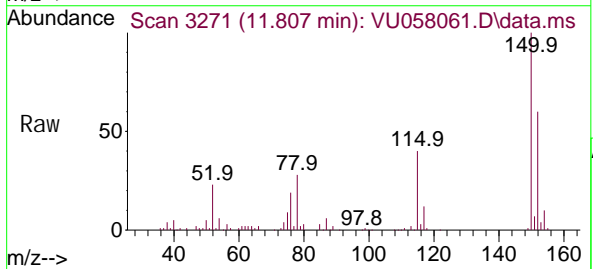
Instrument : MSVOA_U
 ClientSampleId :



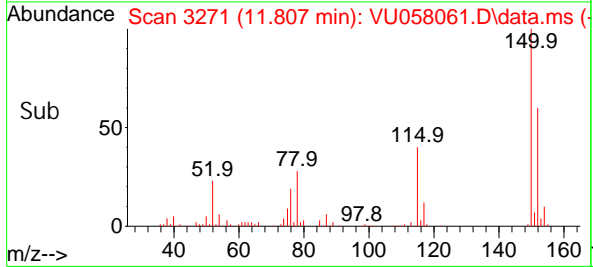
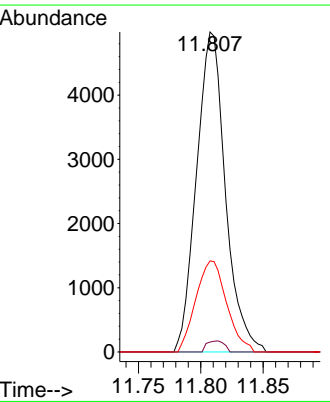
Tgt Ion: 106 Resp: 3554
 Ion Ratio Lower Upper
 106 100
 91 189.4 148.8 276.4

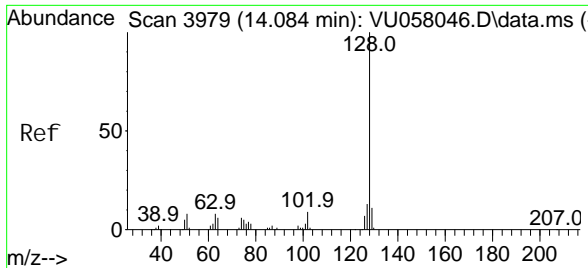


#61
 1, 2, 3-Tri chl oropropane
 Concen: 1.716 ug/L
 RT: 11.807 min Scan# 3271
 Delta R.T. 0.990 min
 Lab File: VU058061.D
 Acq: 12 Mar 2024 15:43



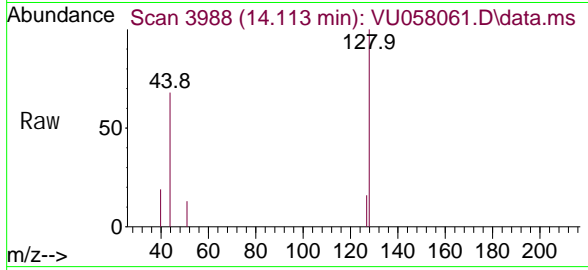
Tgt Ion: 75 Resp: 8027
 Ion Ratio Lower Upper
 75 100
 110 2.1 28.0 42.0#
 77 30.4 24.7 37.1





#71
 Naphthalene
 Concen: 0.127 ug/L
 RT: 14.113 min Scan# 3988
 Delta R.T. 0.029 min
 Lab File: VU058061.D
 Acq: 12 Mar 2024 15:43

Instrument : MSVOA_U
 ClientSampleId :



Tgt Ion: 128 Resp: 1619

Ion	Ratio	Lower	Upper
128	100		
129	0.0	9.0	13.6#
127	6.2	10.6	16.0#

