

Data Path : Z:\voasrv\HPCHEM1\MSVOA_U\Data\VU031224\
 Data File : VU058056.D
 Acq On : 12 Mar 2024 13:45
 Operator : MD/SY
 Sample : P1715-09 20X
 Misc : 25.0mL/MSVOA_U/WATER
 ALS Vial : 13 Sample Multiplier: 1

Instrument :
 MSVOA_U
 ClientSampleId :
 BGQM0

Integration Parameters: rteint.p
 Integrator: RTE
 Smoothing : ON
 Sampling : 1
 Start Thrs : 0.1
 Stop Thrs : 0
 Filtering: 5
 Min Area: 3 % of largest Peak
 Max Peaks: 100
 Peak Location: TOP

If leading or trailing edge < 100 prefer < Baseline drop else tangent >
 Peak separation: 5

Method : Z:\voasrv\HPCHEM1\MSVOA_U\Method\SFAMUTR022924WMA.M
 Title : TRACE VOA SFAM1.0

Signal : TIC: VU058056.D\data.ms

peak #	R.T. min	first scan	max scan	last scan	PK TY	peak height	corr. area	corr. % max.	% of total
1	1.592	86	94	108	rVB	54773	61750	12.74%	1.576%
2	1.904	183	191	203	rVB	51994	66349	13.69%	1.693%
3	2.560	382	395	412	rBV	89481	146764	30.28%	3.746%
4	3.036	532	543	559	rBV3	5322	9989	2.06%	0.255%
5	4.615	1021	1034	1072	rBV	60753	180110	37.16%	4.597%
6	5.052	1155	1170	1196	rBV2	96158	216709	44.71%	5.531%
7	5.718	1357	1377	1409	rBV4	187016	484723	100.00%	12.371%
8	6.242	1528	1540	1569	rBV	165428	327000	67.46%	8.346%
9	6.682	1664	1677	1700	rBV	119688	234833	48.45%	5.994%
10	7.560	1933	1950	1971	rBV	50513	93728	19.34%	2.392%
11	7.891	2041	2053	2077	rBV	217991	390751	80.61%	9.973%
12	8.177	2130	2142	2158	rBV2	28027	50671	10.45%	1.293%
13	8.627	2268	2282	2319	rBV	218935	442057	91.20%	11.282%
14	9.412	2514	2526	2547	rBV	230637	399156	82.35%	10.188%
15	10.749	2931	2942	2957	rBV	73072	122374	25.25%	3.123%
16	10.885	2977	2984	2994	rBV2	3518	5062	1.04%	0.129%
17	11.807	3260	3271	3293	rBV	218998	362542	74.79%	9.253%
18	12.187	3377	3389	3408	rBV	188646	314235	64.83%	8.020%
19	12.769	3560	3570	3579	rBV2	6053	9282	1.91%	0.237%

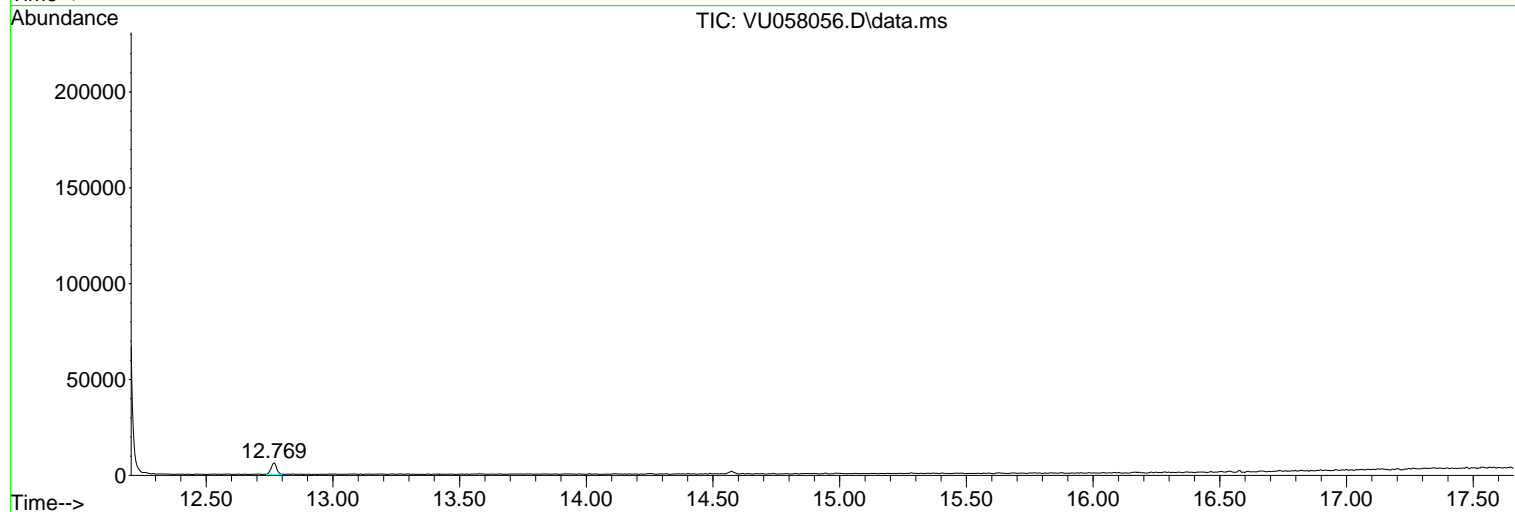
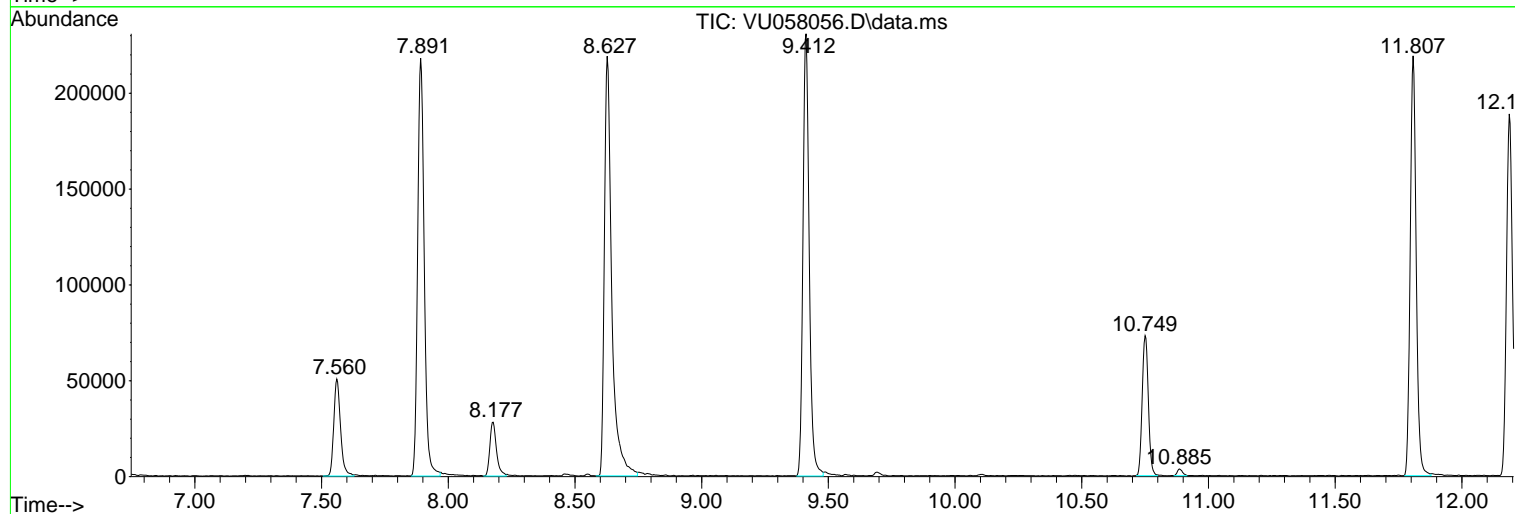
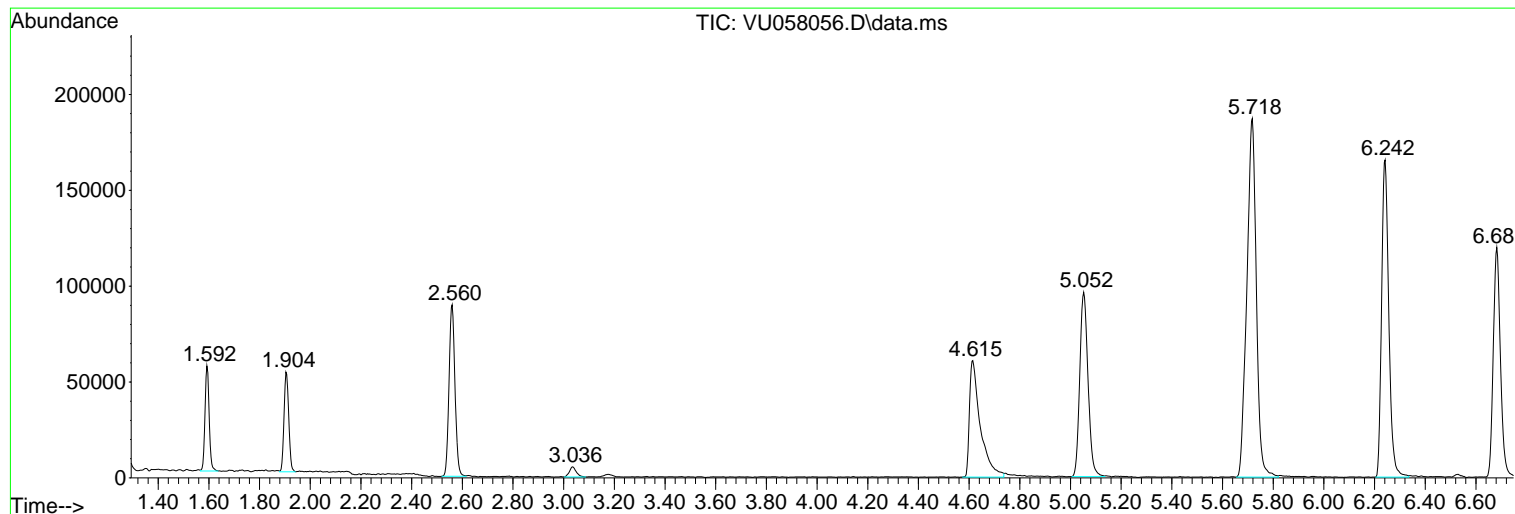
Sum of corrected areas: 3918085

Data Path : Z:\voasrv\HPCHEM1\MSVOA_U\Data\VU031224\
Data File : VU058056.D
Acq On : 12 Mar 2024 13:45
Operator : MD/SY
Sample : P1715-09 20X
Misc : 25.0mL/MSVOA_U/WATER
ALS Vial : 13 Sample Multiplier: 1

Instrument :
MSVOA_U
ClientSampleId :
BGQM0

Quant Method : Z:\voasrv\HPCHEM1\MSVOA_U\Method\SFAMUTR022924WMA.M
Quant Title : TRACE VOA SFAM1.0

TIC Library : C:\Database\NIST20.L
TIC Integration Parameters: LSCINT.P



Library Search Compound Report

Data Path : Z:\voasrv\HPCHEM1\MSVOA_U\Data\VU031224\
Data File : VU058056.D
Acq On : 12 Mar 2024 13:45
Operator : MD/SY
Sample : P1715-09 20X
Misc : 25.0mL/MSVOA_U/WATER
ALS Vial : 13 Sample Multiplier: 1

Instrument :
MSVOA_U
ClientSampleId :
BGQM0

Quant Method : Z:\voasrv\HPCHEM1\MSVOA_U\Method\SFAMUTR022924WMA.M
Quant Title : TRACE VOA SFAM1.0

TIC Library : C:\Database\NIST20.L
TIC Integration Parameters: LSCINT.P

No Library Search Compounds Detected

Data Path : Z:\voasrv\HPCHEM1\MSVOA_U\Data\VU031224\
Data File : VU058056.D
Acq On : 12 Mar 2024 13:45
Operator : MD/SY
Sample : P1715-09 20X
Misc : 25.0mL/MSVOA_U/WATER
ALS Vial : 13 Sample Multiplier: 1

Instrument :
MSVOA_U
ClientSampleId :
BGQM0

Quant Method : Z:\voasrv\HPCHEM1\MSVOA_U\Method\SFAMUTR022924WMA.M
Quant Title : TRACE VOA SFAM1.0

TIC Library : C:\Database\NIST0.L
TIC Integration Parameters: LSCINT.P

TIC Top Hit name	RT	EstConc	Units	Response	--Internal Standard--		
					#	RT	Resp Conc
