

Data Path : Z:\VOASRV\HPCHEM1\MSVOA U\DATA\VU031320\  
 Data File : VU037244.D  
 Acq On : 13 Mar 2020 16:06  
 Operator : JC/MD  
 Sample : L1923-07  
 Misc : 25.0mL/MSVOA U/WATER  
 ALS Vial : 8 Sample Multiplier: 1

Instrument :  
 MSVOA\_U  
 ClientSampled :  
 CONG4

Integration Parameters: rteint.p  
 Integrator: RTE  
 Smoothing : ON  
 Sampling : 1  
 Start Thrs: 0.1  
 Stop Thrs : 0

Filtering: 5  
 Min Area: 3 % of largest Peak  
 Max Peaks: 100  
 Peak Location: TOP

If leading or trailing edge < 100 prefer < Baseline drop else tangent >  
 Peak separation: 5

Method : Z:\VOASRV\HPCHEM1\MSVOA\_U\METHOD\SOMUTR031120WMA.M  
 Title : TRACE VOA SOM01.0

Signal : TIC

peak #	R.T. min	first scan	max scan	last scan	PK TY	peak height	corr. area	corr. % max.	% of total
1	1.478	36	43	58	rBV2	25988	51221	11.19%	1.262%
2	1.613	78	85	95	rVB	58834	62793	13.71%	1.548%
3	1.932	177	184	193	rVB	51993	63454	13.86%	1.564%
4	2.591	372	389	401	rBV	89485	146642	32.02%	3.614%
5	2.658	401	410	422	rVB2	9954	17164	3.75%	0.423%
6	2.790	438	451	469	rBV	11806	23461	5.12%	0.578%
7	3.166	553	568	575	rBV	3202	5594	1.22%	0.138%
8	3.224	576	586	600	rVB	7359	14922	3.26%	0.368%
9	4.671	1021	1036	1057	rBV	75419	187455	40.94%	4.620%
10	5.105	1152	1171	1194	rBV	85125	200523	43.79%	4.942%
11	5.761	1351	1375	1402	rBV3	168013	435404	95.08%	10.731%
12	6.282	1521	1537	1556	rBV	168779	314094	68.59%	7.742%
13	6.726	1658	1675	1693	rBV	108279	209848	45.83%	5.172%
14	7.594	1932	1945	1958	rBV	56400	98421	21.49%	2.426%
15	7.925	2031	2048	2061	rBV	208369	358792	78.35%	8.843%
16	7.996	2061	2070	2081	rVB2	19827	33241	7.26%	0.819%
17	8.205	2124	2135	2149	rBV2	35700	59413	12.97%	1.464%
18	8.661	2263	2277	2305	rBV	229942	457928	100.00%	11.287%
19	8.812	2315	2324	2335	rVB5	10481	16831	3.68%	0.415%
20	9.439	2506	2519	2556	rVB	237627	406141	88.69%	10.010%
21	9.713	2594	2604	2616	rBV	7138	10570	2.31%	0.261%
22	10.134	2723	2735	2748	rBV2	26662	44828	9.79%	1.105%
23	10.369	2800	2808	2816	rBV6	3018	5169	1.13%	0.127%
24	10.774	2923	2934	2950	rBV	80994	132524	28.94%	3.266%
25	11.491	3146	3157	3168	rBV5	3442	6224	1.36%	0.153%
26	11.709	3216	3225	3235	rBV6	3461	4899	1.07%	0.121%
27	11.828	3247	3262	3277	rBV	219968	359586	78.52%	8.863%
28	12.208	3369	3380	3397	rBV	197513	323457	70.63%	7.972%
29	12.915	3594	3600	3611	rBV3	5309	6672	1.46%	0.164%

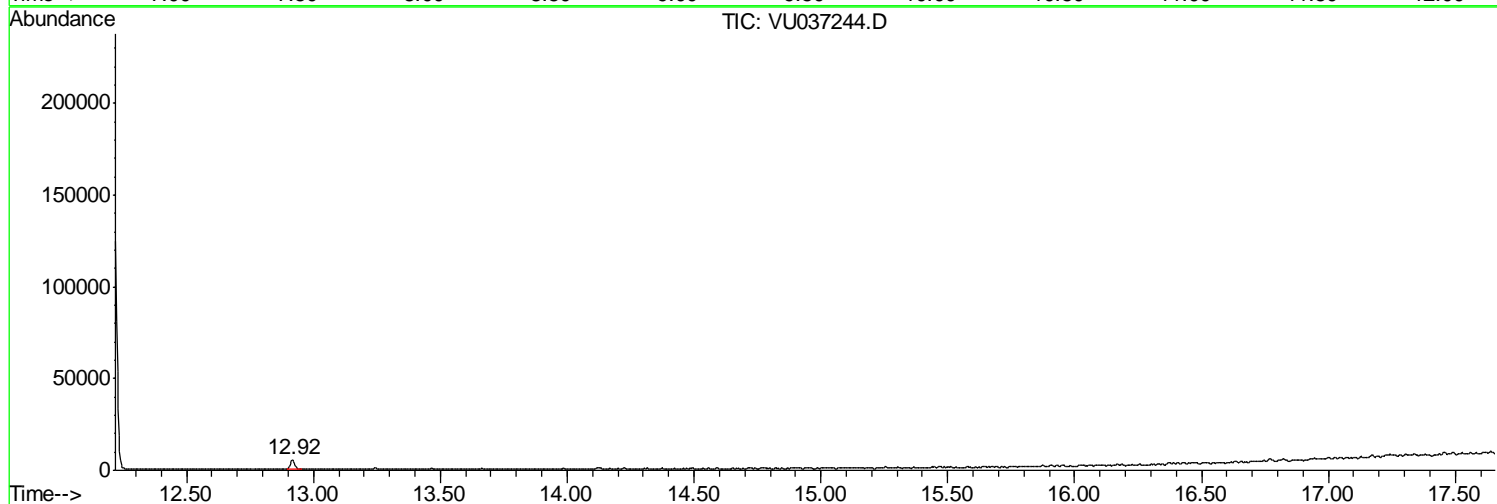
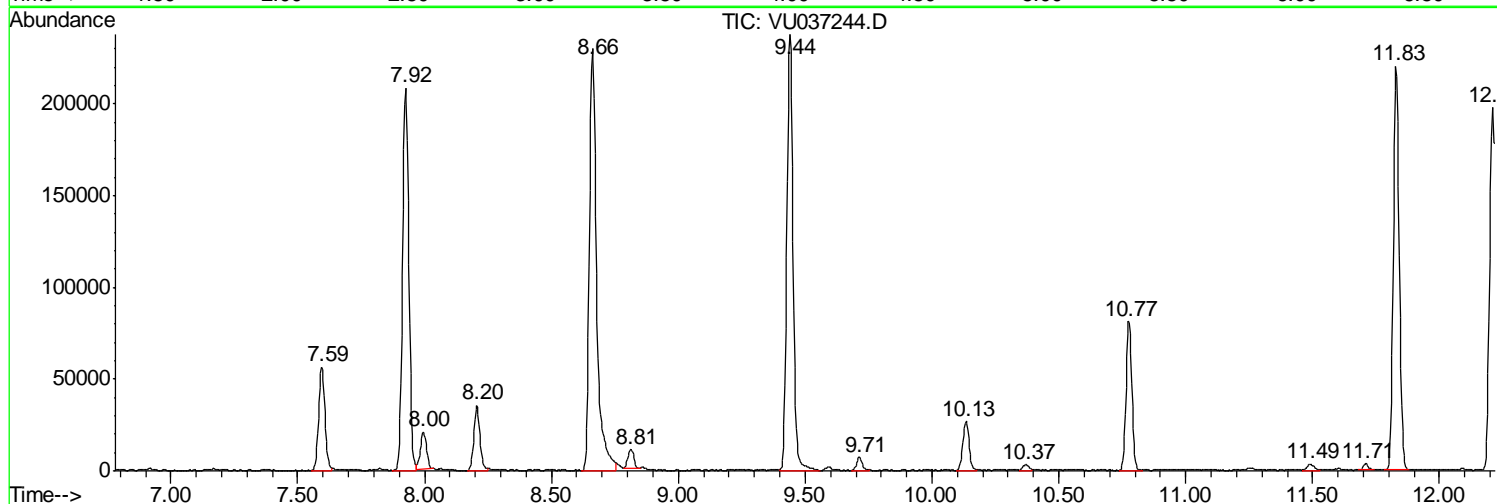
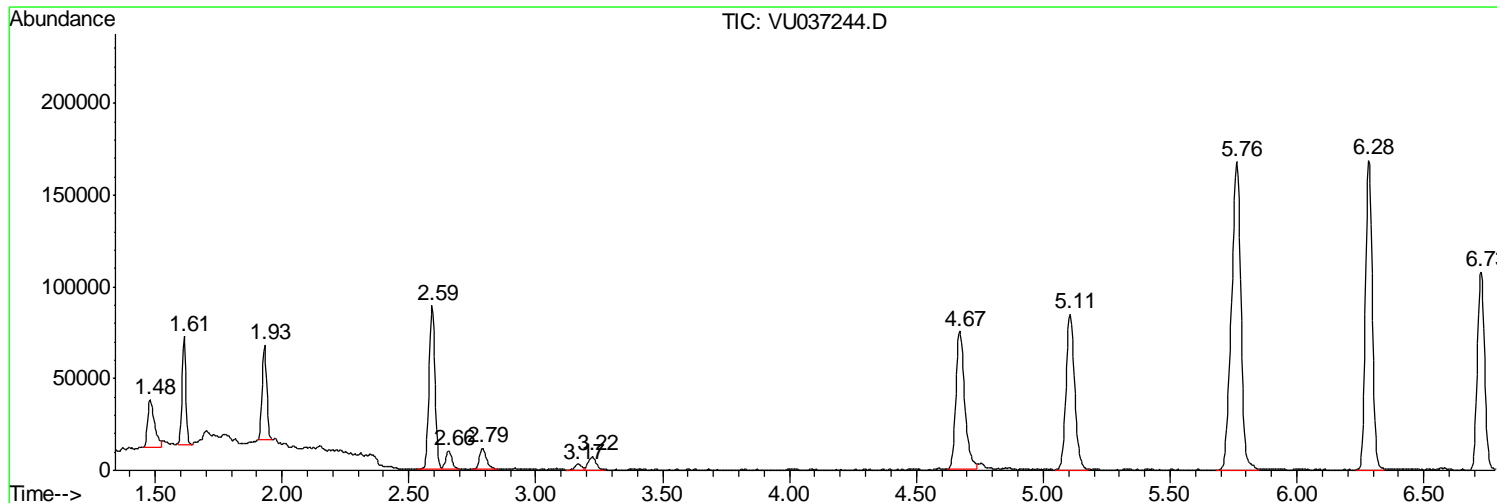
Sum of corrected areas: 4057271

Data Path : Z:\VOASRV\HPCHEM1\MSVOA U\DATA\VU031320\  
 Data File : VU037244.D  
 Acq On : 13 Mar 2020 16:06  
 Operator : JC/MD  
 Sample : L1923-07  
 Misc : 25.0mL/MSVOA U/WATER  
 ALS Vial : 8 Sample Multiplier: 1

Instrument :  
 MSVOA\_U  
 ClientSampleId :  
 CONG4

Quant Method : Z:\VOASRV\HPCHEM1\MSVOA\_U\METHOD\SOMUTR031120WMA.M  
 Quant Title : TRACE VOA SOM01.0

TIC Library : C:\DATABASE\NIST11.L  
 TIC Integration Parameters: LSCINT.P



Data Path : Z:\VOASRV\HPCHEM1\MSVOA U\DATA\VU031320\  
 Data File : VU037244.D  
 Acq On : 13 Mar 2020 16:06  
 Operator : JC/MD  
 Sample : L1923-07  
 Misc : 25.0mL/MSVOA U/WATER  
 ALS Vial : 8 Sample Multiplier: 1

Instrument :  
 MSVOA\_U  
 ClientSampleID :  
 CONG4

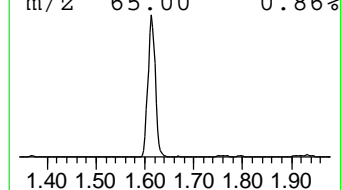
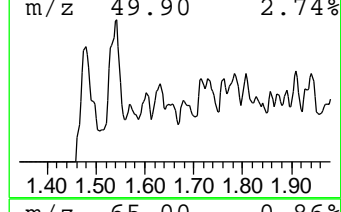
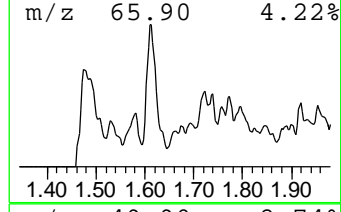
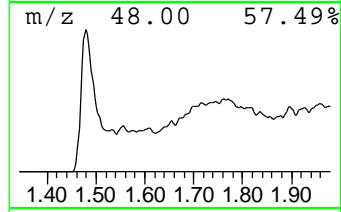
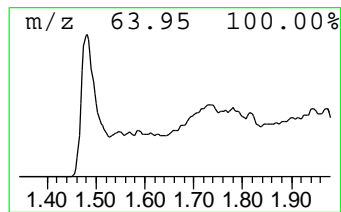
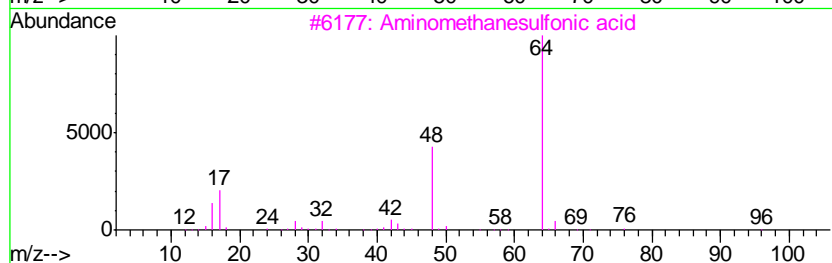
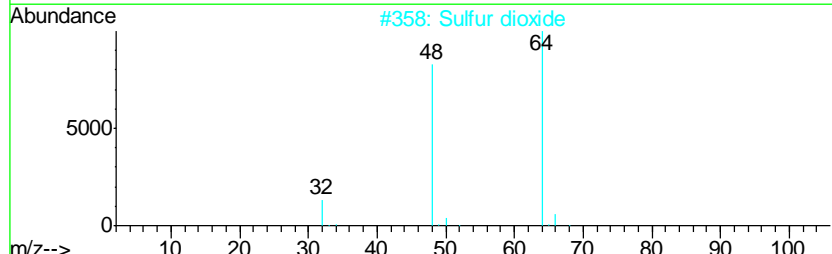
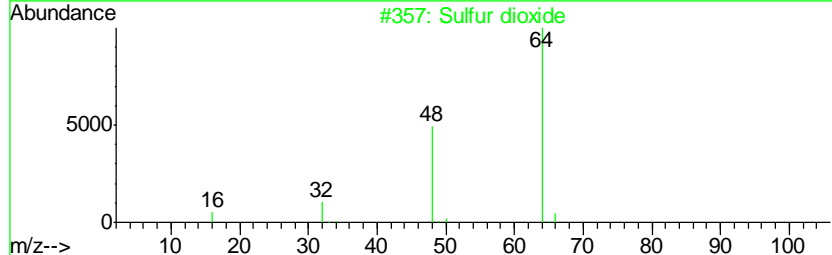
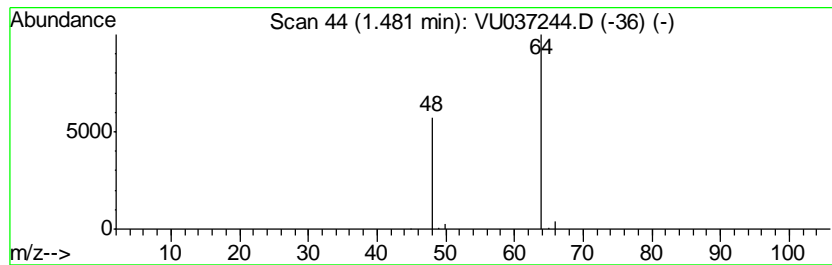
Quant Method : Z:\VOASRV\HPCHEM1\MSVOA\_U\METHOD\SOMUTR031120WMA.M  
 Quant Title : TRACE VOA SOM01.0

TIC Library : C:\DATABASE\NIST11.L  
 TIC Integration Parameters: LSCINT.P

\*\*\*\*\*  
 Peak Number 1 Sulfur dioxide Concentration Rank 2

R.T.	EstConc	Area	Relative to ISTD	R.T.
1.48	0.82 ug/L	51221	1,4-Difluorobenzene	6.29

Hit#	of	Tentative ID	MW	MolForm	CAS#	Qual
1	5	Sulfur dioxide	64	O2S	007446-09-5	83
2		Sulfur dioxide	64	O2S	007446-09-5	83
3		Aminomethanesulfonic acid	111	CH5NO3S	013881-91-9	74
4		Aminomethanesulfonic acid	111	CH5NO3S	013881-91-9	9
5		Aminomethanesulfonic acid	111	CH5NO3S	013881-91-9	9



Data Path : Z:\VOASRV\HPCHEM1\MSVOA\_U\DATA\VU031320\  
Data File : VU037244.D  
Acq On : 13 Mar 2020 16:06  
Operator : JC/MD  
Sample : L1923-07  
Misc : 25.0mL/MSVOA\_U/WATER  
ALS Vial : 8 Sample Multiplier: 1

Instrument :  
MSVOA\_U  
ClientSampleId :  
C0NG4

Quant Method : Z:\VOASRV\HPCHEM1\MSVOA\_U\METHOD\SOMUTR031120WMA.M  
Quant Title : TRACE VOA SOM01.0

TIC Library : C:\DATABASE\NIST11.L  
TIC Integration Parameters: LSCINT.P

TIC Top Hit name	RT	EstConc	Units	Response	--Internal Standard--			
					#	RT	Resp	Conc
Sulfur dioxide	1.48	0.8	ug/L	51221	1	6.29	314094	5.0