

Data Path : Z:\VOASRV\HPCHEM1\MSVOA U\DATA\VU031320\
 Data File : VU037252.D
 Acq On : 13 Mar 2020 19:25
 Operator : JC/MD
 Sample : L1900-09
 Misc : 25.0mL/MSVOA U/WATER
 ALS Vial : 16 Sample Multiplier: 1

Instrument :
 MSVOA_U
 ClientSampled :
 CONC8

Integration Parameters: rteint.p
 Integrator: RTE
 Smoothing : ON
 Sampling : 1
 Start Thrs: 0.1
 Stop Thrs : 0

Filtering: 5
 Min Area: 3 % of largest Peak
 Max Peaks: 100
 Peak Location: TOP

If leading or trailing edge < 100 prefer < Baseline drop else tangent >
 Peak separation: 5

Method : Z:\VOASRV\HPCHEM1\MSVOA_U\METHOD\SOMUTR031120WMA.M
 Title : TRACE VOA SOM01.0

Signal : TIC

peak #	R.T. min	first scan	max scan	last scan	PK TY	peak height	corr. area	corr. % max.	% of total
1	1.617	79	86	93	rBV	57651	60931	14.08%	1.640%
2	1.749	123	127	134	rVB2	4744	4420	1.02%	0.119%
3	1.932	176	184	196	rVB	50090	62164	14.36%	1.673%
4	2.594	377	390	403	rBV	84061	138761	32.06%	3.735%
5	2.787	439	450	472	rBV	19272	38747	8.95%	1.043%
6	3.221	568	585	607	rBV2	23040	51751	11.96%	1.393%
7	4.671	1018	1036	1063	rBV2	84473	219508	50.72%	5.909%
8	5.105	1153	1171	1190	rBV	85981	186383	43.07%	5.017%
9	5.761	1353	1375	1399	rBV2	161482	421273	97.34%	11.340%
10	6.282	1523	1537	1554	rBV	157504	295094	68.18%	7.944%
11	6.723	1661	1674	1695	rBV2	102660	201133	46.47%	5.414%
12	7.594	1930	1945	1958	rBV	53172	92973	21.48%	2.503%
13	7.925	2034	2048	2064	rBV	196313	343438	79.35%	9.245%
14	8.205	2123	2135	2154	rBV	32550	56784	13.12%	1.529%
15	8.661	2265	2277	2324	rBV	200640	432788	100.00%	11.650%
16	9.440	2506	2519	2549	rBV	224880	383285	88.56%	10.318%
17	10.777	2921	2935	2950	rBV	75494	125406	28.98%	3.376%
18	11.829	3249	3262	3277	rBV	184580	309741	71.57%	8.338%
19	12.211	3369	3381	3395	rBV	177136	290233	67.06%	7.813%

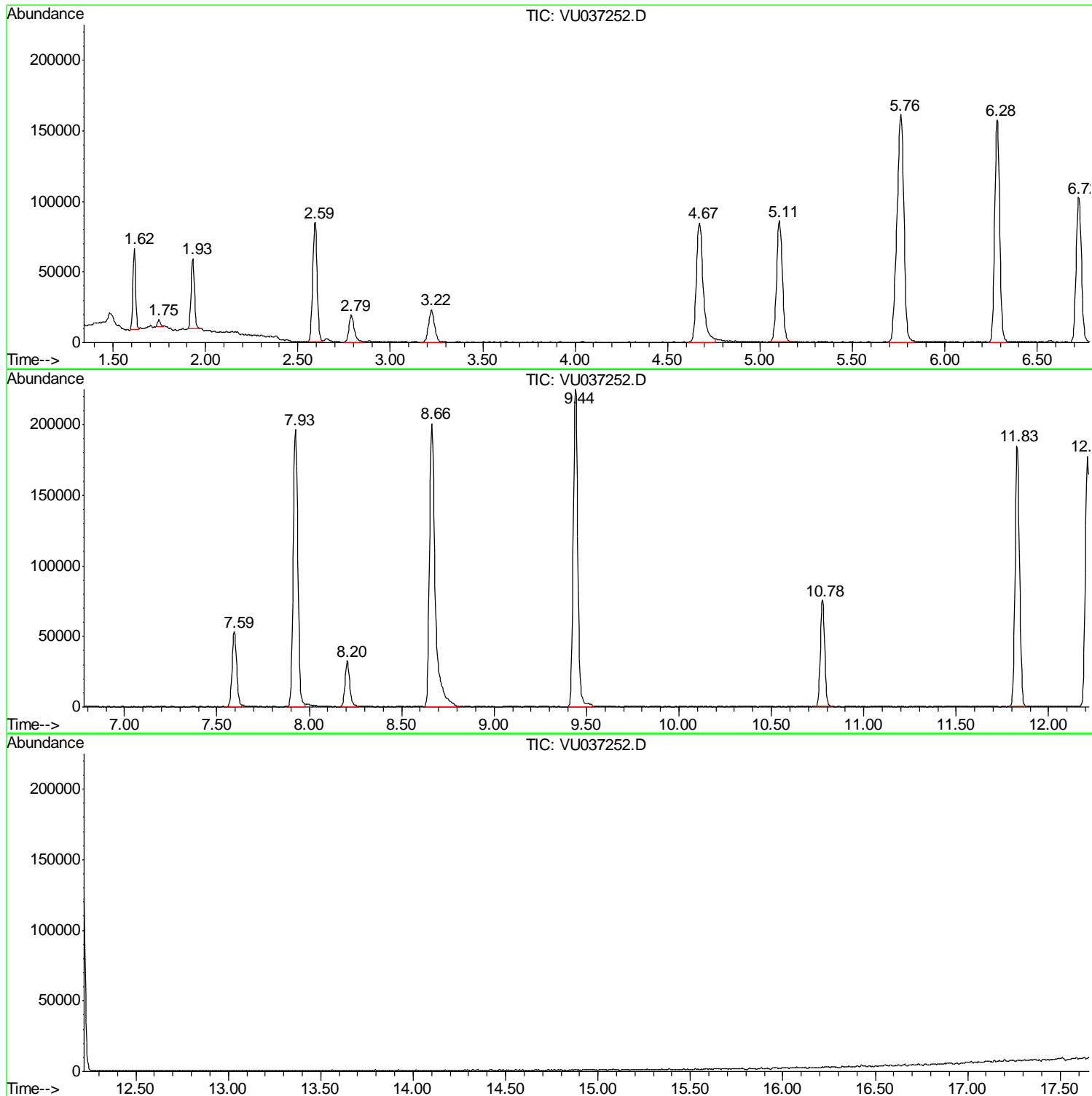
Sum of corrected areas: 3714813

Data Path : Z:\VOASRV\HPCHEM1\MSVOA U\DATA\VU031320\
Data File : VU037252.D
Acq On : 13 Mar 2020 19:25
Operator : JC/MD
Sample : L1900-09
Misc : 25.0mL/MSVOA U/WATER
ALS Vial : 16 Sample Multiplier: 1

Instrument :
MSVOA_U
ClientSampled :
CONC8

Quant Method : Z:\VOASRV\HPCHEM1\MSVOA_U\METHOD\SOMUTR031120WMA.M
Quant Title : TRACE VOA SOM01.0

TIC Library : C:\DATABASE\NIST11.L
TIC Integration Parameters: LSCINT.P



Data Path : Z:\VOASRV\HPCHEM1\MSVOA U\DATA\VU031320\
 Data File : VU037252.D
 Acq On : 13 Mar 2020 19:25
 Operator : JC/MD
 Sample : L1900-09
 Misc : 25.0mL/MSVOA U/WATER
 ALS Vial : 16 Sample Multiplier: 1

Instrument :
 MSVOA_U
 ClientSampleID :
 CONC8

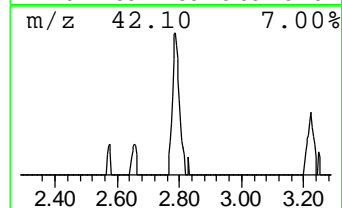
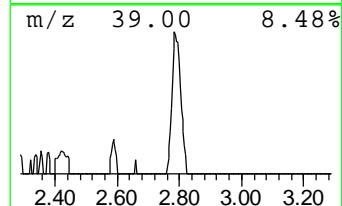
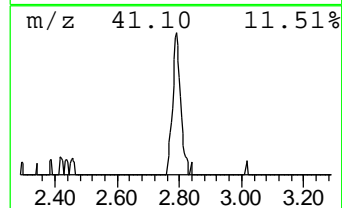
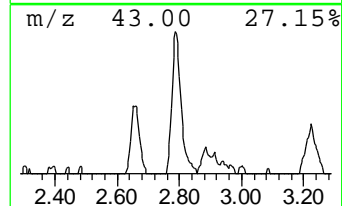
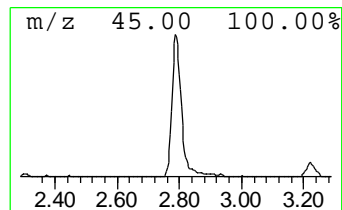
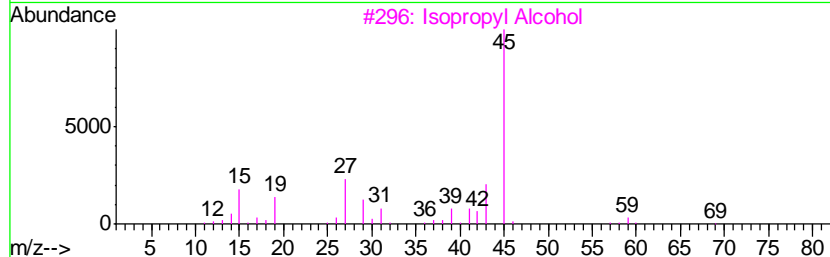
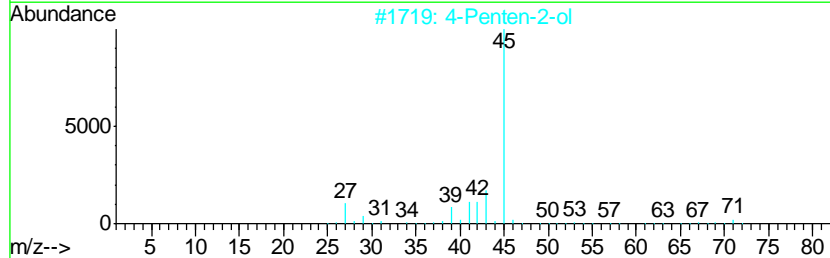
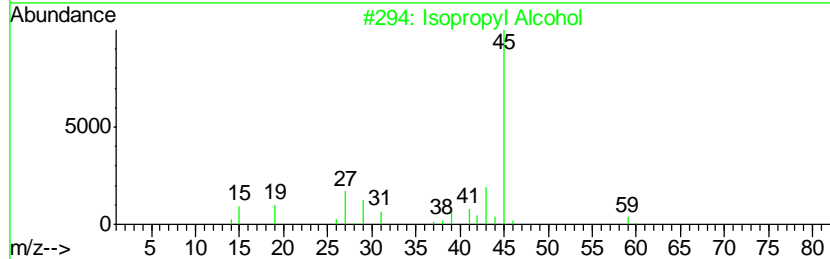
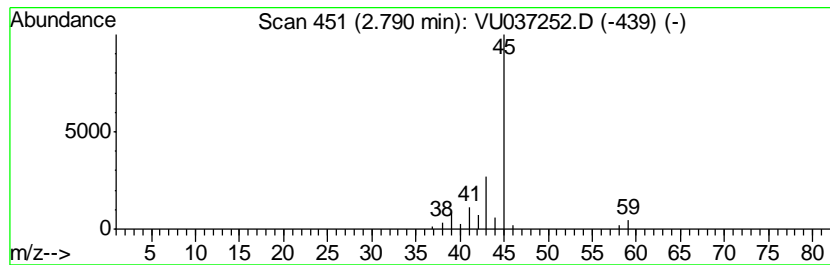
Quant Method : Z:\VOASRV\HPCHEM1\MSVOA_U\METHOD\SOMUTR031120WMA.M
 Quant Title : TRACE VOA SOM01.0

TIC Library : C:\DATABASE\NIST11.L
 TIC Integration Parameters: LSCINT.P

 Peak Number 1 Isopropyl Alcohol Concentration Rank 3

R.T.	EstConc	Area	Relative to ISTD	R.T.
2.79	0.66 ug/L	38747	1,4-Difluorobenzene	6.28

Hit#	of	Tentative ID	MW	MolForm	CAS#	Qual
1	5	Isopropyl Alcohol	60	C3H8O	000067-63-0	74
2		4-Penten-2-ol	86	C5H10O	000625-31-0	9
3		Isopropyl Alcohol	60	C3H8O	000067-63-0	9
4		Ethylamine	45	C2H7N	000075-04-7	5
5		4-Penten-2-ol	86	C5H10O	000625-31-0	4



Data Path : Z:\VOASRV\HPCHEM1\MSVOA_U\DATA\VU031320\
Data File : VU037252.D
Acq On : 13 Mar 2020 19:25
Operator : JC/MD
Sample : L1900-09
Misc : 25.0mL/MSVOA_U/WATER
ALS Vial : 16 Sample Multiplier: 1

Instrument :
MSVOA_U
ClientSampleId :
C0NC8

Quant Method : Z:\VOASRV\HPCHEM1\MSVOA_U\METHOD\SOMUTR031120WMA.M
Quant Title : TRACE VOA SOM01.0

TIC Library : C:\DATABASE\NIST11.L
TIC Integration Parameters: LSCINT.P

TIC Top Hit name	RT	EstConc	Units	Response	--Internal Standard--			
					#	RT	Resp	Conc
Isopropyl Alcohol	2.79	0.7	ug/L	38747	1	6.28	295094	5.0