

Data Path : Z:\VOASRV\HPCHEM1\MSVOA U\DATA\VU031420\
 Data File : VU037281.D
 Acq On : 14 Mar 2020 22:45
 Operator : JC/MD
 Sample : L1923-16
 Misc : 25.0mL/MSVOA U/WATER
 ALS Vial : 23 Sample Multiplier: 1

Instrument :
 MSVOA_U
 ClientSampleID :
 CONJ5

Quant Time: Mar 16 05:21:01 2020
 Quant Method : Z:\VOASRV\HPCHEM1\MSVOA_U\METHOD\SOMUTR031120WMA.M
 Quant Title : TRACE VOA SOM01.0
 QLast Update : Mon Mar 16 05:16:55 2020
 Response via : Initial Calibration

Internal Standards	R.T.	QIon	Response	Conc	Units	Dev(Min)
1) 1,4-Difluorobenzene	6.28	114	116930	5.00	ug/L	0.00
28) Chlorobenzene-d5	9.44	117	119404	5.00	ug/L	0.00
60) 1,4-Dichlorobenzene-d4	11.83	152	46653	5.00	ug/L	0.00

System Monitoring Compounds

4) Vinyl Chloride-d3	1.61	65	36516	4.76	ug/L	0.00
Spiked Amount	5.000	Range	40 - 130	Recovery	=	95.20%
7) Chloroethane-d5	1.93	69	33064	6.10	ug/L	0.00
Spiked Amount	5.000	Range	65 - 130	Recovery	=	122.00%
11) 1,1-Dichloroethene-d2	2.59	63	54171	3.42	ug/L	0.00
Spiked Amount	5.000	Range	60 - 125	Recovery	=	68.40%
20) 2-Butanone-d5	4.67	46	98543	50.17	ug/L	0.00
Spiked Amount	50.000	Range	40 - 130	Recovery	=	100.34%
24) Chloroform-d	5.11	84	78889	5.02	ug/L	0.00
Spiked Amount	5.000	Range	70 - 125	Recovery	=	100.40%
26) 1,2-Dichloroethane-d4	5.74	65	46632	5.12	ug/L	0.00
Spiked Amount	5.000	Range	70 - 130	Recovery	=	102.40%
32) Benzene-d6	5.76	84	143247	4.88	ug/L	0.00
Spiked Amount	5.000	Range	70 - 125	Recovery	=	97.60%
36) 1,2-Dichloropropane-d6	6.73	67	46266	4.87	ug/L	0.00
Spiked Amount	5.000	Range	60 - 140	Recovery	=	97.40%
41) Toluene-d8	7.92	98	127736	4.64	ug/L	0.00
Spiked Amount	5.000	Range	70 - 130	Recovery	=	92.80%
43) trans-1,3-Dichloropropene-	8.20	79	17162	4.48	ug/L	0.00
Spiked Amount	5.000	Range	55 - 130	Recovery	=	89.60%
46) 2-Hexanone-d5	8.66	63	77162	48.37	ug/L	0.00
Spiked Amount	50.000	Range	45 - 130	Recovery	=	96.74%
57) 1,1,2,2-Tetrachloroethane-	10.78	84	36740	4.71	ug/L	0.00
Spiked Amount	5.000	Range	65 - 120	Recovery	=	94.20%
64) 1,2-Dichlorobenzene-d4	12.21	152	45751	5.68	ug/L	0.00
Spiked Amount	5.000	Range	80 - 120	Recovery	=	113.60%

Target Compounds

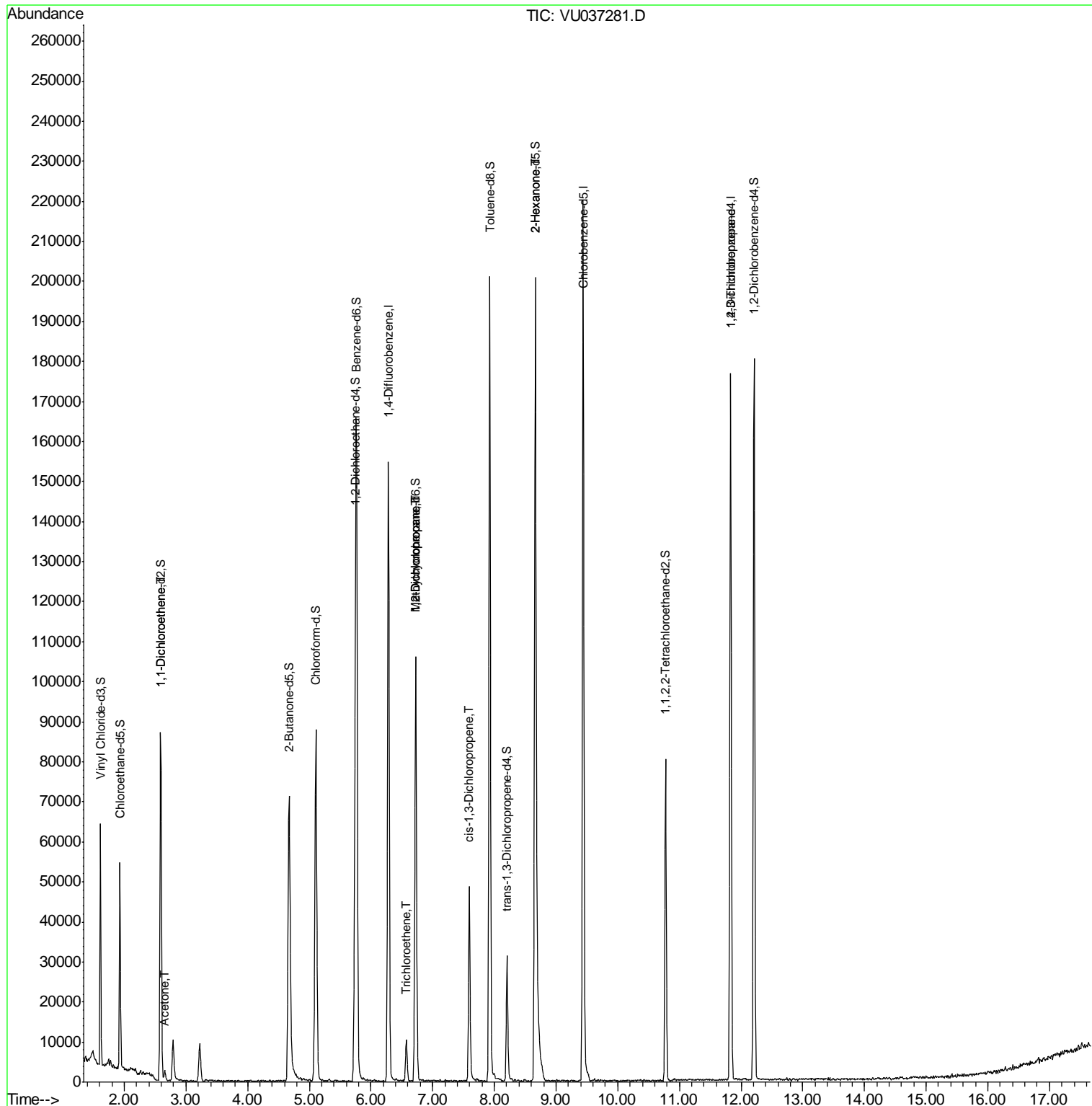
Target Compounds	R.T.	QIon	Response	Conc	Units	Ovalue
12) 1,1-Dichloroethene	2.60	96	499	0.065	ug/L #	1
13) Acetone	2.66	43	2475	1.538	ug/L	98
34) Trichloroethene	6.57	95	3349	0.351	ug/L	96
35) Methylcyclohexane	6.73	83	11338	0.769	ug/L #	15
37) 1,2-Dichloropropane	6.73	63	5893	0.634	ug/L #	88
39) cis-1,3-Dichloropropene	7.59	75	1367	0.103	ug/L #	81
48) 2-Hexanone	8.66	43	12835	2.800	ug/L #	77
59) 1,2,3-Trichloropropane	11.83	75	6016	0.905	ug/L	91

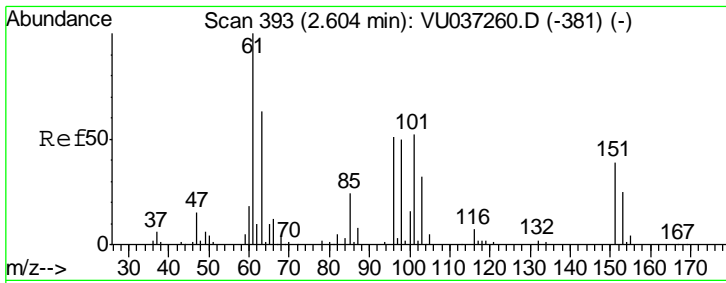
(#) = qualifier out of range (m) = manual integration (+) = signals summed

Data Path : Z:\VOASRV\HPCHEM1\MSVOA U\DATA\VU031420\
 Data File : VU037281.D
 Acq On : 14 Mar 2020 22:45
 Operator : JC/MD
 Sample : L1923-16
 Misc : 25.0mL/MSVOA U/WATER
 ALS Vial : 23 Sample Multiplier: 1

Instrument :
 MSVOA_U
 Client Sampled :
 CONJ5

Quant Time: Mar 16 05:21:01 2020
 Quant Method : Z:\VOASRV\HPCHEM1\MSVOA_U\METHOD\SOMUTR031120WMA.M
 Quant Title : TRACE VOA SOM01.0
 QLast Update : Mon Mar 16 05:16:55 2020
 Response via : Initial Calibration

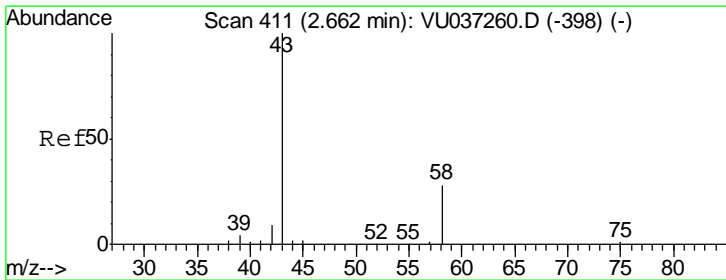
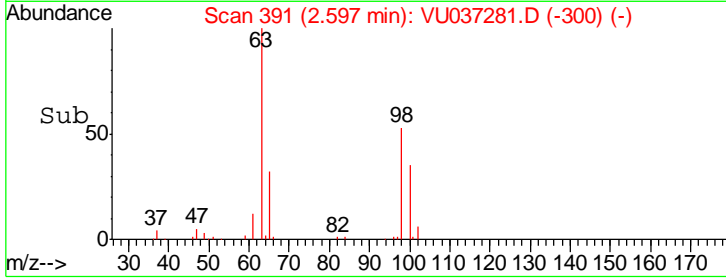
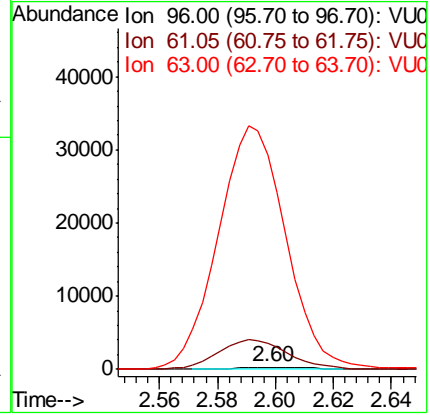
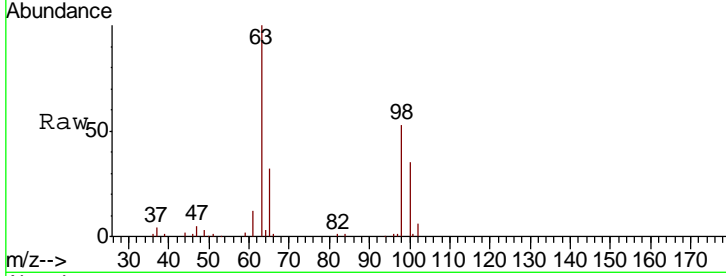




#12
 1,1-Dichloroethene
 Concen: 0.065 ug/L
 RT: 2.60 min Scan# 391
 Delta R.T. -0.01 min
 Lab File: VU037281.D
 Acq: 14 Mar 2020 22:45

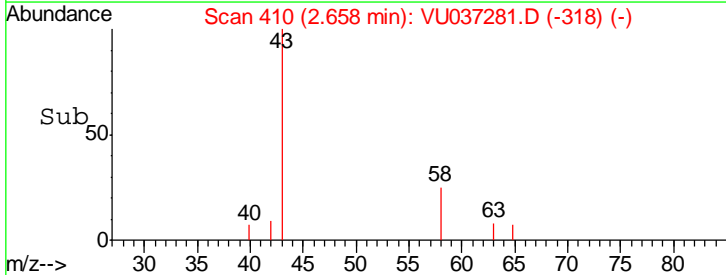
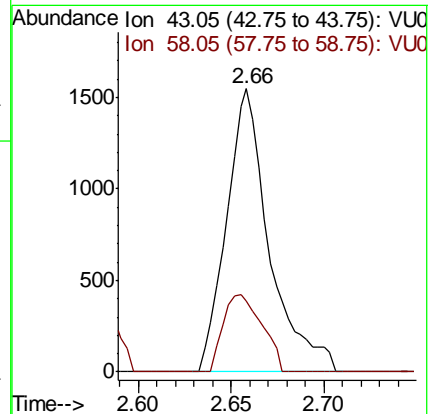
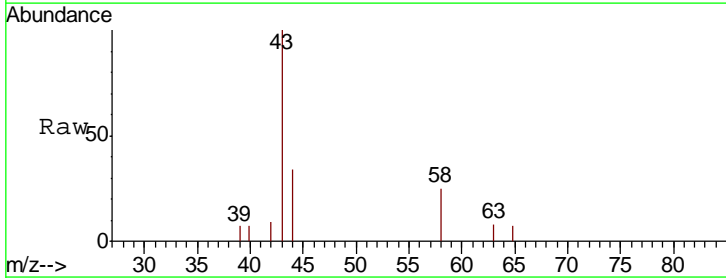
Instrument :
 MSVOA_U
 ClientSampled :
 CONJ5

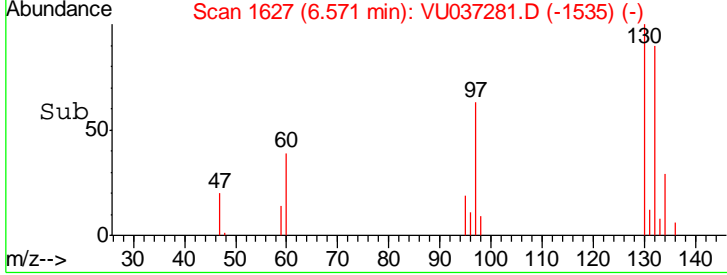
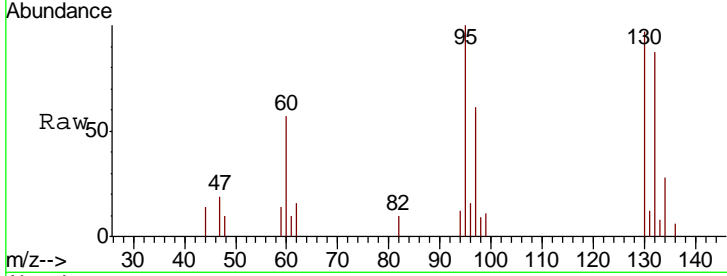
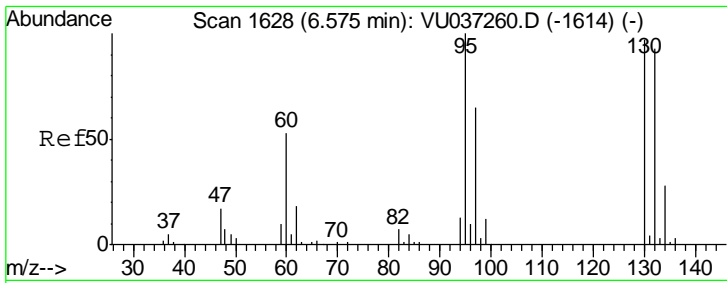
Tot Ion: 96 Resp: 499
 Ion Ratio Lower Upper
 96 100
 61 1115.4 136.4 253.2#
 63 9156.1 86.2 160.0#



#13
 Acetone
 Concen: 1.538 ug/L
 RT: 2.66 min Scan# 410
 Delta R.T. -0.00 min
 Lab File: VU037281.D
 Acq: 14 Mar 2020 22:45

Tgt Ion: 43 Resp: 2475
 Ion Ratio Lower Upper
 43 100
 58 24.8 0.0 52.2

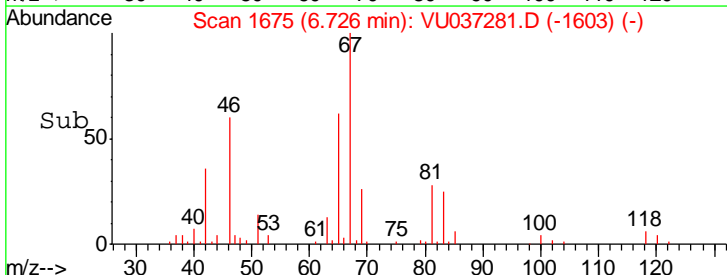
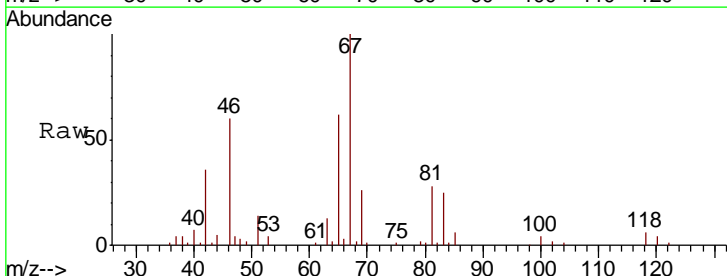
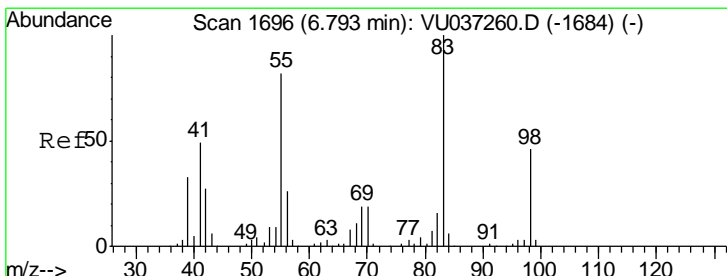
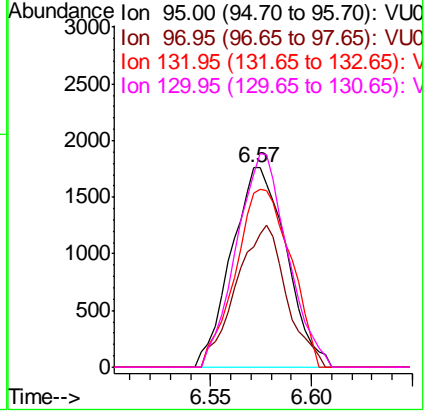




#34
 Trichloroethene
 Concen: 0.351 ug/L
 RT: 6.57 min Scan# 1627
 Delta R.T. -0.00 min
 Lab File: VU037281.D
 Acq: 14 Mar 2020 22:45

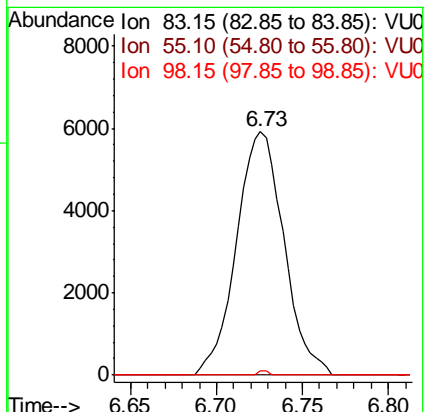
Instrument :
 MSVOA_U
 ClientSampled :
 CONJ5

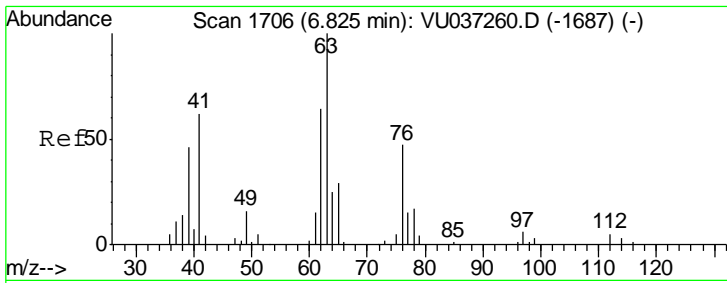
Tgt Ion	Resp	Lower	Upper
95	100		
97	60.5	45.4	84.4
132	87.5	63.7	118.3
130	96.7	64.8	120.4



#35
 Methylcyclohexane
 Concen: 0.769 ug/L
 RT: 6.73 min Scan# 1675
 Delta R.T. -0.07 min
 Lab File: VU037281.D
 Acq: 14 Mar 2020 22:45

Tgt Ion	Resp	Lower	Upper
83	100		
55	0.0	68.1	102.1#
98	0.4	37.0	55.4#

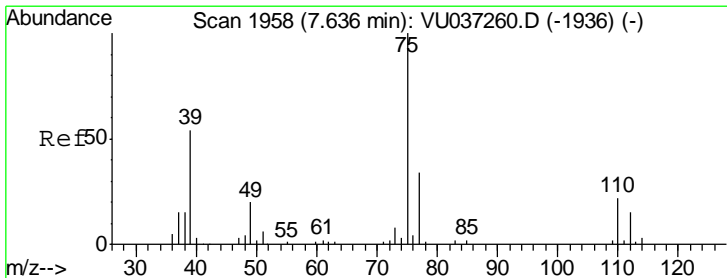
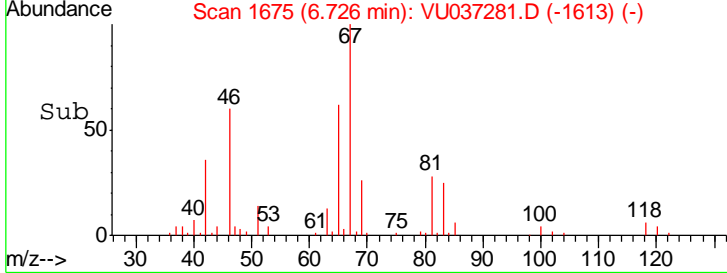
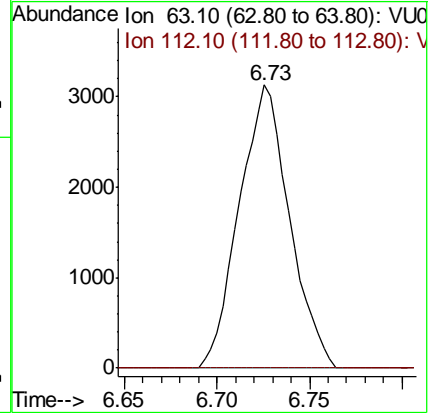
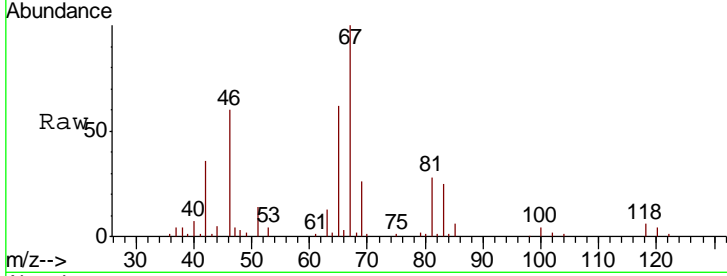




#37
 1,2-Dichloropropane
 Concen: 0.634 ug/L
 RT: 6.73 min Scan# 1675
 Delta R.T. -0.10 min
 Lab File: VU037281.D
 Acq: 14 Mar 2020 22:45

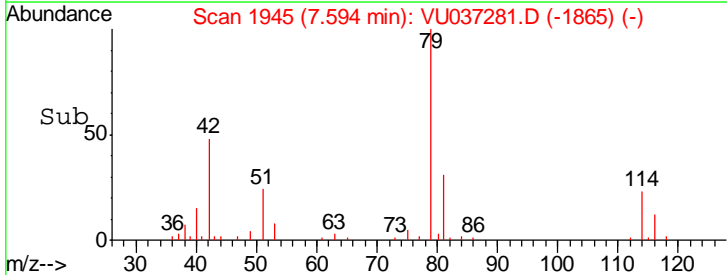
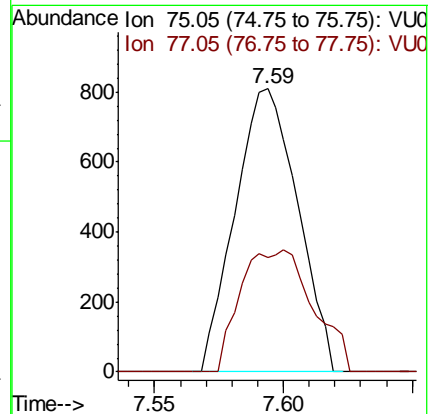
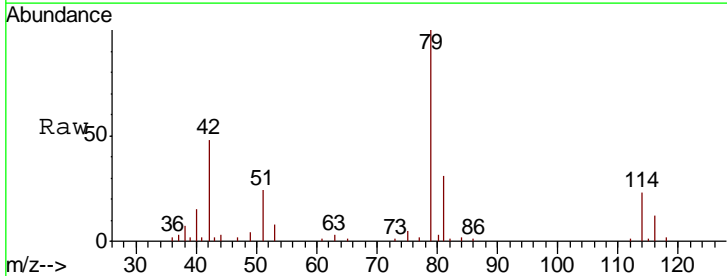
Instrument :
 MSVOA_U
 ClientSampled :
 CONJ5

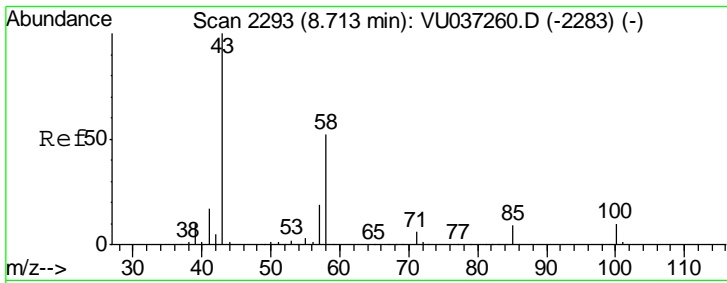
Tgt Ion: 63 Resp: 5893
 Ion Ratio Lower Upper
 63 100
 112 0.0 3.0 4.6#



#39
 cis-1,3-Dichloropropene
 Concen: 0.103 ug/L
 RT: 7.59 min Scan# 1945
 Delta R.T. -0.04 min
 Lab File: VU037281.D
 Acq: 14 Mar 2020 22:45

Tgt Ion: 75 Resp: 1367
 Ion Ratio Lower Upper
 75 100
 77 40.4 21.1 39.1#

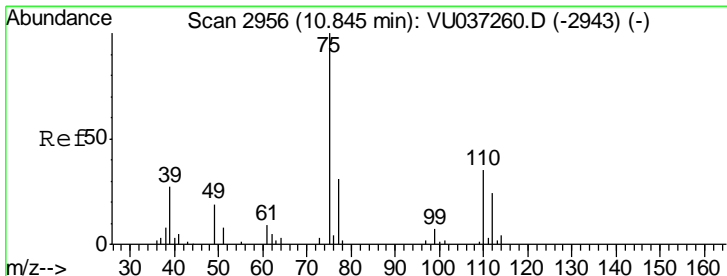
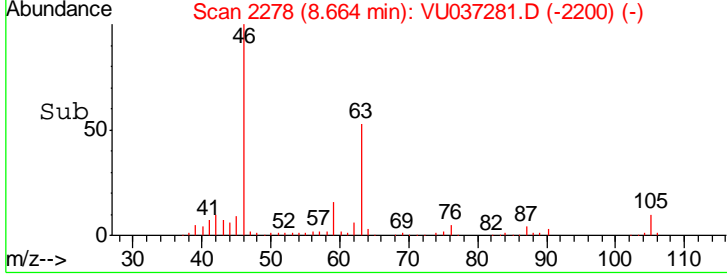
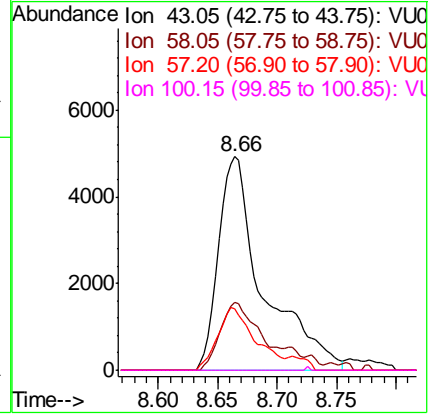
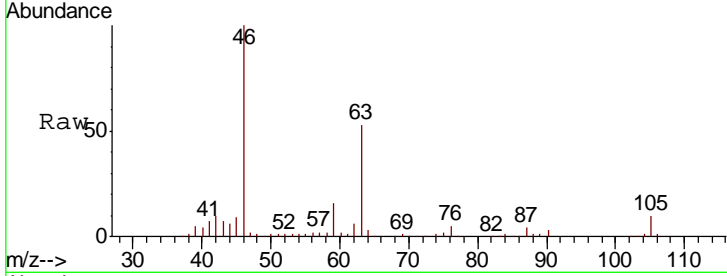




#48
 2-Hexanone
 Concen: 2.800 ug/L
 RT: 8.66 min Scan# 2278
 Delta R.T. -0.05 min
 Lab File: VU037281.D
 Acq: 14 Mar 2020 22:45

Instrument : MSVOA_U
 ClientSampled : CONJ5

Tgt Ion	Resp	Lower	Upper
43	12835		
58	31.7	38.6	58.0#
57	24.7	13.6	20.4#
100	0.2	7.4	11.2#



#59
 1,2,3-Trichloropropane
 Concen: 0.905 ug/L
 RT: 11.83 min Scan# 3262
 Delta R.T. 0.98 min
 Lab File: VU037281.D
 Acq: 14 Mar 2020 22:45

Tgt Ion	Resp	Lower	Upper
75	6016		
77	39.5	27.4	41.0

