

Data Path : Z:\VOASRV\HPCHEM1\MSVOA_U\DATA\VU031519\
 Data File : VU030065.D
 Acq On : 14 Mar 2019 11:45
 Operator : JC/SP
 Sample : K1838-13DL 20X
 Misc : 5.0mL/MSVOA_U/WATER
 ALS Vial : 8 Sample Multiplier: 1

Instrument :
 MSVOA_U
 ClientSampled :
 BF1B2DL

Integration Parameters: LSCINT.P

Integrator: RTE
 Smoothing : OFF
 Sampling : 1
 Start Thrs: 0.2
 Stop Thrs : 0

Filtering: 5
 Min Area: 0 % of largest Peak
 Max Peaks: 100
 Peak Location: TOP

If leading or trailing edge < 100 prefer < Baseline drop else tangent >
 Peak separation: 5

Method : Z:\VOASRV\HPCHEM1\MSVOA_U\METHOD\SOMULM031319WMA.M
 Title : VOC Analysis

Signal : TIC

peak #	R.T. min	first scan	max scan	last scan	PK TY	peak height	corr. area	corr. % max.	% of total
1	1.183	25	29	39	rVB3	10509	10041	0.65%	0.074%
2	1.399	89	96	109	rBV	240687	244767	15.79%	1.807%
3	1.682	176	184	201	rVB	173232	217651	14.04%	1.606%
4	2.190	335	342	350	rBV4	4286	6016	0.39%	0.044%
5	2.273	357	368	383	rBV	378776	581482	37.51%	4.292%
6	2.444	414	421	431	rBV3	3626	7087	0.46%	0.052%
7	2.611	469	473	476	rBV3	388	378	0.02%	0.003%
8	2.701	492	501	514	rBV3	6982	13086	0.84%	0.097%
9	2.842	543	545	551	rVB4	510	381	0.02%	0.003%
10	2.929	569	572	579	rBV2	430	457	0.03%	0.003%
11	2.990	589	591	596	rVB3	674	464	0.03%	0.003%
12	3.058	607	612	621	rVB3	494	534	0.03%	0.004%
13	3.199	651	656	659	rBV	471	455	0.03%	0.003%
14	3.309	688	690	694	rVB	510	370	0.02%	0.003%
15	3.334	694	698	702	rBV	727	630	0.04%	0.005%
16	3.450	729	734	736	rBV2	462	391	0.03%	0.003%
17	3.630	786	790	794	rBV2	449	452	0.03%	0.003%
18	3.791	838	840	847	rVB	507	354	0.02%	0.003%
19	3.958	889	892	897	rVB2	471	354	0.02%	0.003%
20	4.173	947	959	993	rBV	131462	375997	24.25%	2.775%
21	4.489	1055	1057	1062	rVB3	544	507	0.03%	0.004%
22	4.534	1068	1071	1077	rBV2	588	578	0.04%	0.004%
23	4.646	1088	1106	1129	rBV	247910	593148	38.26%	4.378%
24	5.125	1249	1255	1256	rBV2	797	592	0.04%	0.004%
25	5.206	1275	1280	1283	rVB3	432	394	0.03%	0.003%
26	5.337	1297	1321	1357	rBV2	524572	1550212	100.00%	11.442%
27	5.524	1376	1379	1384	rBV3	528	473	0.03%	0.003%
28	5.697	1427	1433	1435	rBV4	479	429	0.03%	0.003%
29	5.749	1440	1449	1454	rBV4	972	1698	0.11%	0.013%
30	5.884	1477	1491	1532	rBV	518088	1085433	70.02%	8.011%
31	6.186	1577	1585	1599	rVB4	11701	22095	1.43%	0.163%
32	6.328	1614	1629	1655	rBV	331132	671792	43.34%	4.958%
33	6.527	1688	1691	1694	rBV2	625	430	0.03%	0.003%
34	6.701	1743	1745	1748	rBV2	605	441	0.03%	0.003%

Data Path : Z:\VOASRV\HPCHEM1\MSVOA_U\DATA\VU031519\
 Data File : VU030065.D
 Acq On : 14 Mar 2019 11:45
 Operator : JC/SP
 Sample : K1838-13DL 20X
 Misc : 5.0mL/MSVOA_U/WATER
 ALS Vial : 8 Sample Multiplier: 1

Instrument :
 MSVOA_U
 ClientSampleId :
 BF1B2DL

Integration Parameters: LSCINT.P

Integrator: RTE
 Smoothing : OFF
 Sampling : 1
 Start Thrs: 0.2
 Stop Thrs : 0

Filtering: 5
 Min Area: 0 % of largest Peak
 Max Peaks: 100
 Peak Location: TOP

If leading or trailing edge < 100 prefer < Baseline drop else tangent >
 Peak separation: 5

Method : Z:\VOASRV\HPCHEM1\MSVOA_U\METHOD\SOMULM031319WMA.M
 Title : VOC Analysis

35	6.720	1748	1751	1754	rVV4	854	684	0.04%	0.005%
36	6.765	1763	1765	1769	rVB3	1011	650	0.04%	0.005%
37	6.787	1769	1772	1775	rBV2	695	411	0.03%	0.003%
38	6.849	1786	1791	1793	rBV3	970	931	0.06%	0.007%
39	7.038	1843	1850	1851	rBV3	436	423	0.03%	0.003%
40	7.080	1860	1863	1868	rBV3	503	493	0.03%	0.004%
41	7.128	1875	1878	1883	rVB2	454	379	0.02%	0.003%
42	7.225	1895	1908	1934	rBV	188662	346786	22.37%	2.560%
43	7.414	1964	1967	1969	rBV2	711	539	0.03%	0.004%
44	7.453	1977	1979	1983	rBV4	502	404	0.03%	0.003%
45	7.562	1999	2013	2051	rBV	725872	1292589	83.38%	9.540%
46	7.849	2090	2102	2123	rBV	128782	229803	14.82%	1.696%
47	8.032	2156	2159	2166	rVB3	910	1099	0.07%	0.008%
48	8.067	2168	2170	2174	rBV	594	398	0.03%	0.003%
49	8.176	2191	2204	2210	rVV	64795	122992	7.93%	0.908%
50	8.225	2210	2219	2235	rVV	412008	724106	46.71%	5.345%
51	8.308	2235	2245	2294	rVB	480595	867109	55.93%	6.400%
52	8.575	2326	2328	2331	rBV2	688	422	0.03%	0.003%
53	8.630	2342	2345	2355	rVB5	1098	1240	0.08%	0.009%
54	9.086	2474	2487	2517	rBV	772009	1292960	83.41%	9.543%
55	9.241	2532	2535	2538	rBV3	904	657	0.04%	0.005%
56	9.520	2619	2622	2628	rVB2	460	499	0.03%	0.004%
57	9.549	2628	2631	2636	rBV	703	608	0.04%	0.004%
58	9.572	2636	2638	2643	rVB2	760	443	0.03%	0.003%
59	9.598	2643	2646	2651	rVB2	372	345	0.02%	0.003%
60	9.726	2681	2686	2688	rBV	726	604	0.04%	0.004%
61	9.768	2693	2699	2700	rBV2	582	395	0.03%	0.003%
62	9.813	2710	2713	2718	rVB3	681	347	0.02%	0.003%
63	9.958	2755	2758	2762	rVB3	517	461	0.03%	0.003%
64	10.000	2767	2771	2773	rBV	692	397	0.03%	0.003%
65	10.160	2815	2821	2827	rBV4	1062	1305	0.08%	0.010%
66	10.321	2867	2871	2875	rBV3	451	443	0.03%	0.003%
67	10.360	2880	2883	2888	rBV	565	423	0.03%	0.003%
68	10.427	2892	2904	2923	rBV	500722	803765	51.85%	5.932%
69	10.565	2941	2947	2949	rBV5	590	593	0.04%	0.004%
70	10.607	2949	2960	2974	rVB3	17898	32298	2.08%	0.238%
71	10.807	3020	3022	3026	rBV2	485	411	0.03%	0.003%

Data Path : Z:\VOASRV\HPCHEM1\MSVOA_U\DATA\VU031519\
 Data File : VU030065.D
 Acq On : 14 Mar 2019 11:45
 Operator : JC/SP
 Sample : K1838-13DL 20X
 Misc : 5.0mL/MSVOA_U/WATER
 ALS Vial : 8 Sample Multiplier: 1

Instrument :
 MSVOA_U
 ClientSampleId :
 BF1B2DL

Integration Parameters: LSCINT.P

Integrator: RTE
 Smoothing : OFF Filtering: 5
 Sampling : 1 Min Area: 0 % of largest Peak
 Start Thrs: 0.2 Max Peaks: 100
 Stop Thrs : 0 Peak Location: TOP

If leading or trailing edge < 100 prefer < Baseline drop else tangent >
 Peak separation: 5

Method : Z:\VOASRV\HPCHEM1\MSVOA_U\METHOD\SOMULM031319WMA.M
 Title : VOC Analysis

72	10.877	3035	3044	3053	rBV5	2281	3894	0.25%	0.029%
73	10.945	3061	3065	3069	rVB3	508	490	0.03%	0.004%
74	10.967	3069	3072	3078	rVB2	370	370	0.02%	0.003%
75	10.996	3078	3081	3083	rBV	571	423	0.03%	0.003%
76	11.080	3104	3107	3113	rVB3	781	754	0.05%	0.006%
77	11.160	3129	3132	3137	rBV3	468	396	0.03%	0.003%
78	11.199	3141	3144	3149	rBV2	468	427	0.03%	0.003%
79	11.353	3188	3192	3194	rBV	537	428	0.03%	0.003%
80	11.421	3206	3213	3219	rBV4	1192	1524	0.10%	0.011%
81	11.479	3219	3231	3257	rBV	770211	1247205	80.45%	9.205%
82	11.810	3332	3334	3335	rBV	843	382	0.02%	0.003%
83	11.858	3336	3349	3378	rVV	701545	1153910	74.44%	8.517%
84	12.086	3418	3420	3428	rVB4	757	669	0.04%	0.005%
85	12.118	3428	3430	3432	rVV2	652	433	0.03%	0.003%
86	12.212	3456	3459	3464	rVV5	539	486	0.03%	0.004%
87	12.421	3519	3524	3526	rBV2	504	473	0.03%	0.003%
88	12.482	3532	3543	3558	rVB2	5596	10588	0.68%	0.078%
89	12.614	3580	3584	3587	rVB3	511	424	0.03%	0.003%
90	12.723	3613	3618	3622	rVB4	746	835	0.05%	0.006%
91	12.762	3622	3630	3634	rBV	986	1507	0.10%	0.011%
92	12.832	3648	3652	3653	rBV3	535	391	0.03%	0.003%
93	12.900	3666	3673	3674	rBV4	676	702	0.05%	0.005%
94	13.520	3863	3866	3868	rBV2	695	471	0.03%	0.003%
95	13.591	3885	3888	3892	rVV2	497	395	0.03%	0.003%
96	13.691	3916	3919	3923	rVB3	771	603	0.04%	0.004%
97	13.716	3923	3927	3928	rBV	637	427	0.03%	0.003%
98	13.999	4012	4015	4021	rVV3	1136	1028	0.07%	0.008%
99	14.083	4039	4041	4046	rVB3	780	502	0.03%	0.004%
100	14.321	4112	4115	4119	rBV2	587	396	0.03%	0.003%

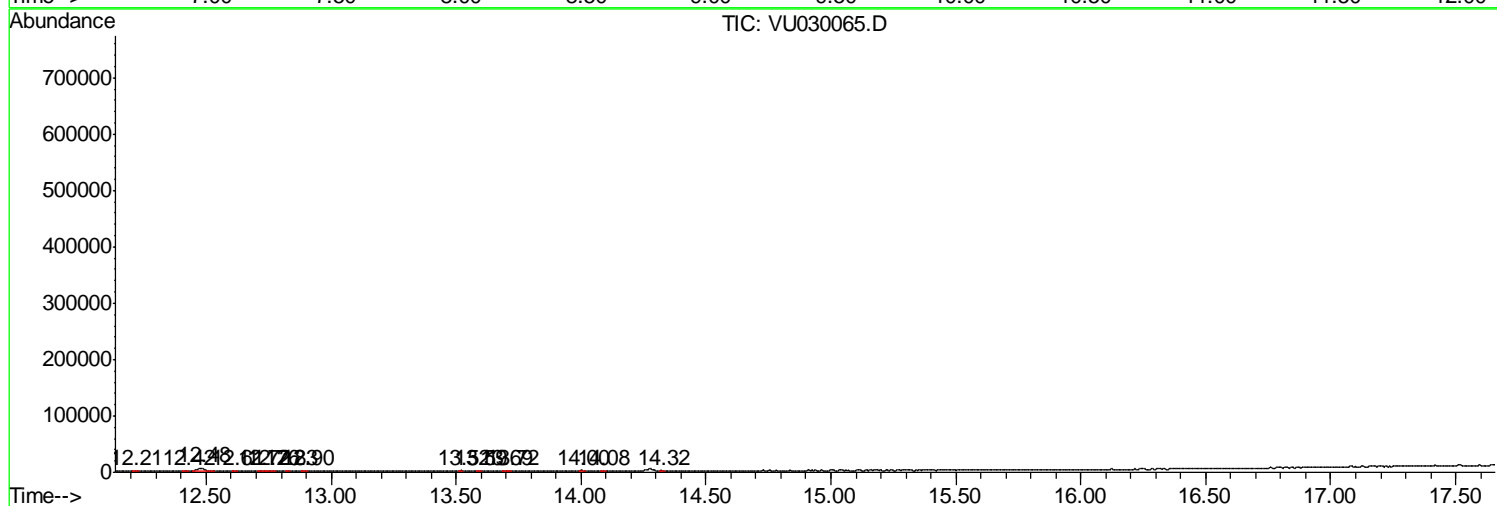
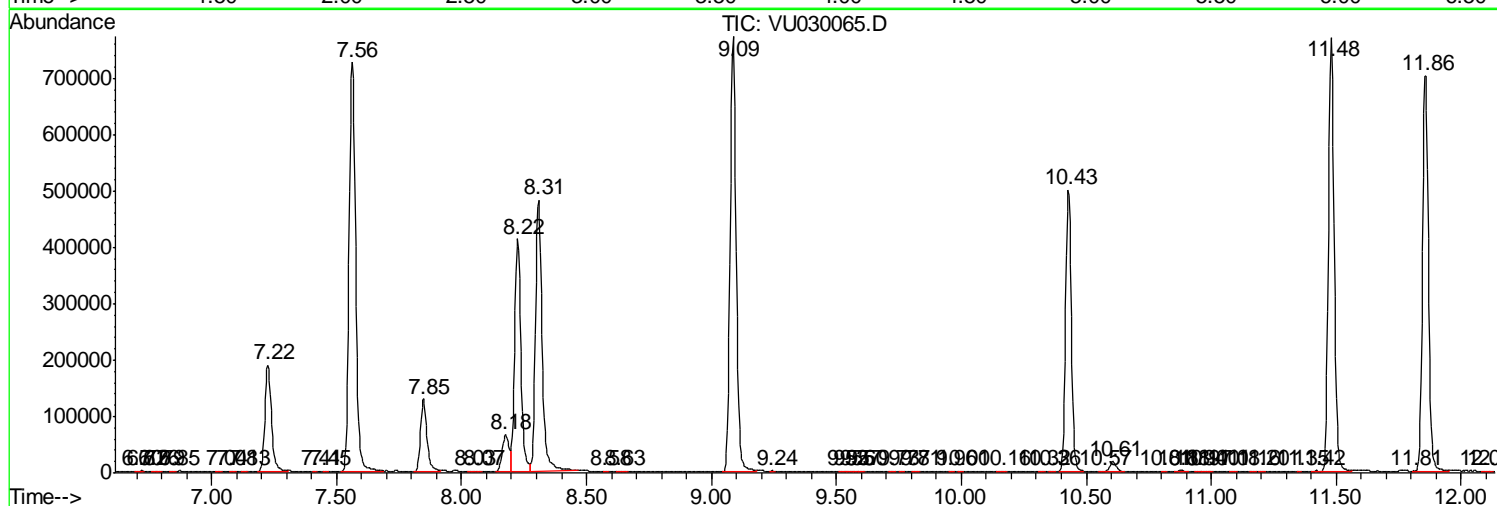
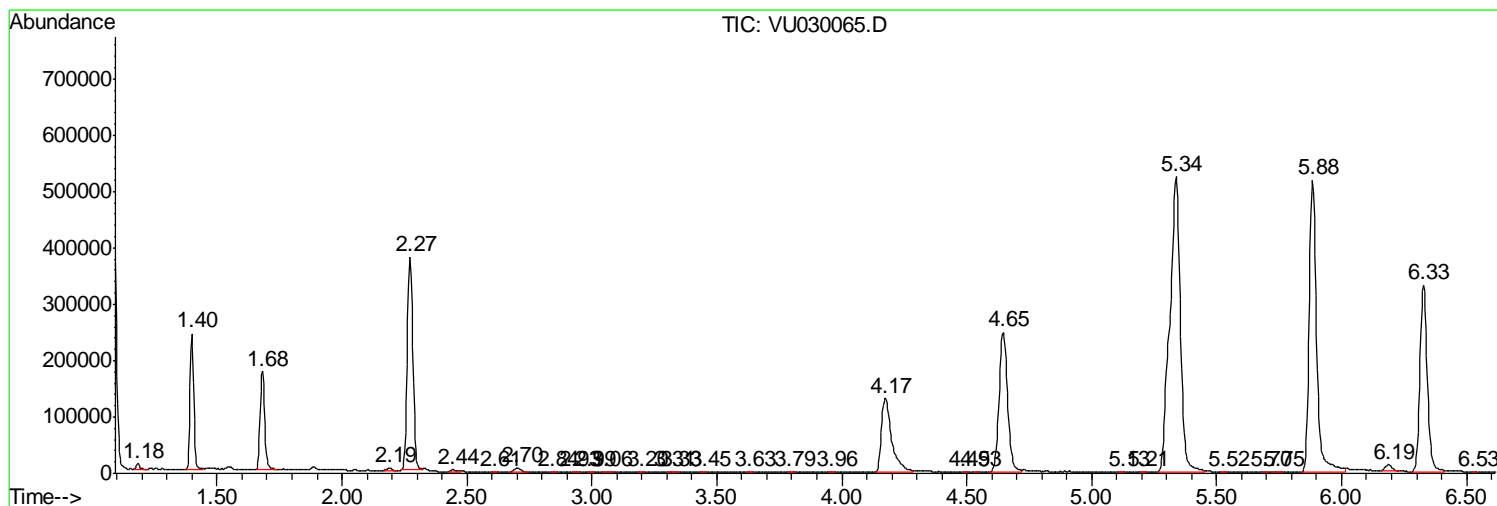
Sum of corrected areas: 13548514

Data Path : Z:\VOASRV\HPCHEM1\MSVOA_U\DATA\VU031519\
 Data File : VU030065.D
 Acq On : 14 Mar 2019 11:45
 Operator : JC/SP
 Sample : K1838-13DL 20X
 Misc : 5.0mL/MSVOA_U/WATER
 ALS Vial : 8 Sample Multiplier: 1

Instrument :
 MSVOA_U
 Client Sampled :
 BF1B2DL

Quant Method : Z:\VOASRV\HPCHEM1\MSVOA_U\METHOD\SOMULM031319WMA.M
 Quant Title : VOC Analysis

TIC Library : C:\DATABASE\NIST11.L
 TIC Integration Parameters: LSCINT.P



Data Path : Z:\VOASRV\HPCHEM1\MSVOA_U\DATA\VU031519\
Data File : VU030065.D
Acq On : 14 Mar 2019 11:45
Operator : JC/SP
Sample : K1838-13DL 20X
Misc : 5.0mL/MSVOA_U/WATER
ALS Vial : 8 Sample Multiplier: 1

Instrument :
MSVOA_U
ClientSampleId :
BF1B2DL

Quant Method : Z:\VOASRV\HPCHEM1\MSVOA_U\METHOD\SOMULM031319WMA.M
Quant Title : VOC Analysis

TIC Library : C:\DATABASE\NIST11.L
TIC Integration Parameters: LSCINT.P

No Library Search Compounds Detected

Data Path : Z:\VOASRV\HPCHEM1\MSVOA_U\DATA\VU031519\
Data File : VU030065.D
Acq On : 14 Mar 2019 11:45
Operator : JC/SP
Sample : K1838-13DL 20X
Misc : 5.0mL/MSVOA_U/WATER
ALS Vial : 8 Sample Multiplier: 1

Instrument :
MSVOA_U
ClientSampleId :
BF1B2DL

Quant Method : Z:\VOASRV\HPCHEM1\MSVOA_U\METHOD\SOMULM031319WMA.M
Quant Title : VOC Analysis

TIC Library : C:\DATABASE\NIST11.L
TIC Integration Parameters: LSCINT.P

TIC Top Hit name	RT	EstConc	Units	Response	--Internal Standard--			
					#	RT	Resp	Conc
