

Data Path : Z:\voasrv\HPCHEM1\MSVOA_U\Data\VU031523\
 Data File : VU053211.D
 Acq On : 15 Mar 2023 19:24
 Operator : JC/MD
 Sample : 01929-19
 Misc : 5.0mL/MSVOA_U/WATER
 ALS Vial : 25 Sample Multiplier: 1

Instrument :
 MSVOA_U
 ClientSampleId :
 EYFF2

Quant Time: Mar 16 04:04:18 2023
 Quant Method : Z:\voasrv\HPCHEM1\MSVOA_U\Method\SFAMULM031523WMA.M
 Quant Title : VOC Analysis
 QLast Update : Thu Mar 16 03:54:54 2023
 Response via : Initial Calibration

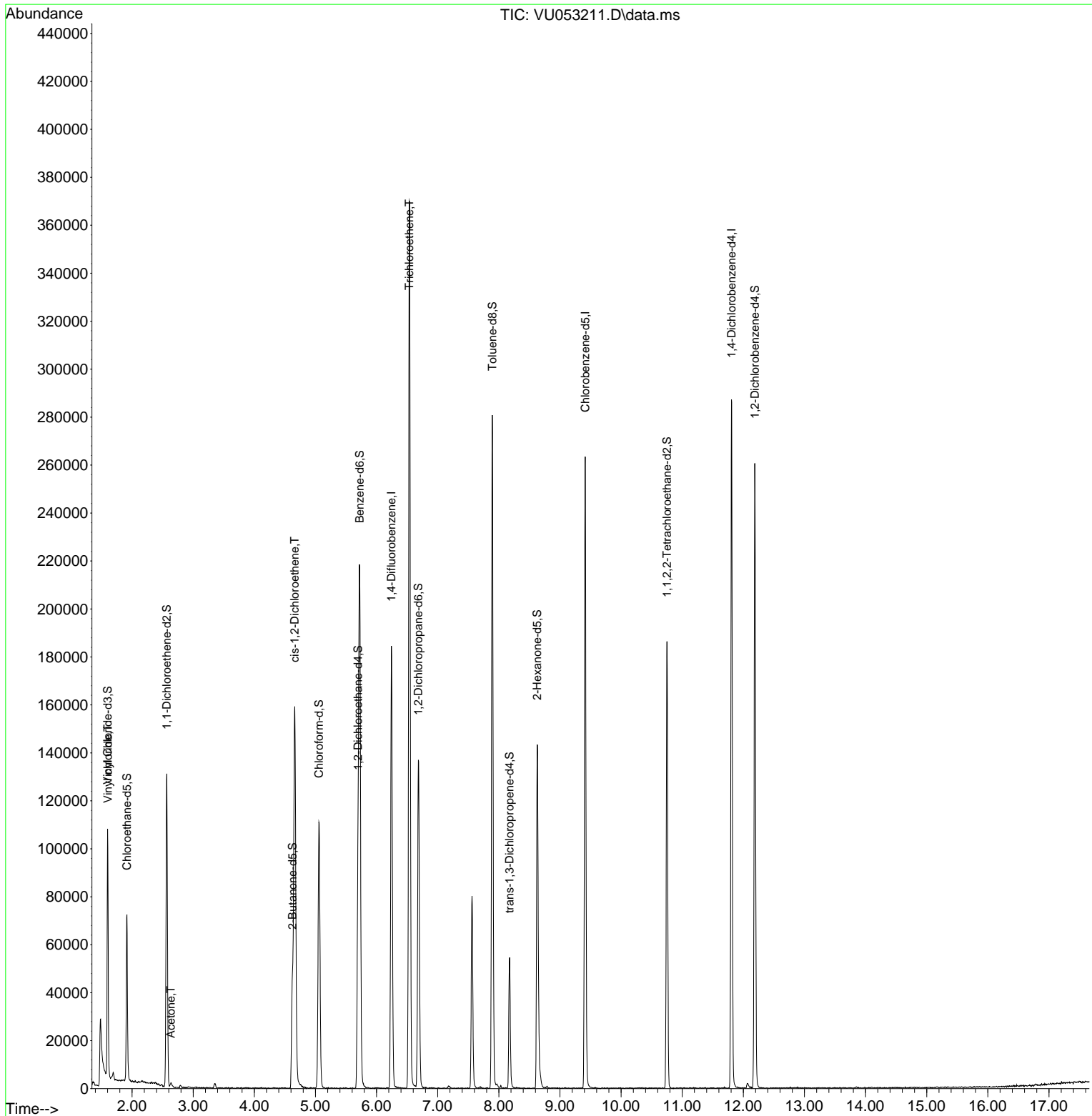
Compound	R.T.	QIon	Response	Conc	Units	Dev(Min)
Internal Standards						
1) 1,4-Difluorobenzene	6.243	114	148939	50.000	ug/L	0.00
28) Chlorobenzene-d5	9.414	117	141456	50.000	ug/L	0.00
58) 1,4-Dichlorobenzene-d4	11.809	152	71671	50.000	ug/L	0.00
System Monitoring Compounds						
4) Vinyl Chloride-d3	1.600	65	57567	41.896	ug/L	0.00
Spiked Amount	50.000	Range 60 - 135	Recovery =	83.800%		
7) Chloroethane-d5	1.916	69	49222	44.287	ug/L	0.00
Spiked Amount	50.000	Range 70 - 130	Recovery =	88.580%		
11) 1,1-Dichloroethene-d2	2.568	63	75964	31.914	ug/L	0.00
Spiked Amount	50.000	Range 60 - 125	Recovery =	63.820%		
21) 2-Butanone-d5	4.623	46	67590	106.059	ug/L	0.00
Spiked Amount	100.000	Range 40 - 130	Recovery =	106.060%		
24) Chloroform-d	5.057	84	99754	44.078	ug/L	0.00
Spiked Amount	50.000	Range 70 - 125	Recovery =	88.160%		
26) 1,2-Dichloroethane-d4	5.697	65	63099	44.894	ug/L	0.00
Spiked Amount	50.000	Range 70 - 125	Recovery =	89.780%		
32) Benzene-d6	5.722	84	210204	45.814	ug/L	0.00
Spiked Amount	50.000	Range 70 - 125	Recovery =	91.620%		
36) 1,2-Dichloropropane-d6	6.684	67	68964	46.572	ug/L	0.00
Spiked Amount	50.000	Range 70 - 120	Recovery =	93.140%		
41) Toluene-d8	7.893	98	187304	43.847	ug/L	0.00
Spiked Amount	50.000	Range 80 - 120	Recovery =	87.700%		
43) trans-1,3-Dichloroprop...	8.176	79	32026	43.834	ug/L	0.00
Spiked Amount	50.000	Range 60 - 125	Recovery =	87.660%		
47) 2-Hexanone-d5	8.629	63	52716	113.868	ug/L	0.00
Spiked Amount	100.000	Range 45 - 130	Recovery =	113.870%		
56) 1,1,2,2-Tetrachloroeth...	10.751	84	93942	48.972	ug/L	0.00
Spiked Amount	50.000	Range 65 - 120	Recovery =	97.940%		
66) 1,2-Dichlorobenzene-d4	12.188	152	63941	46.075	ug/L	0.00
Spiked Amount	50.000	Range 80 - 120	Recovery =	92.160%		
Target Compounds						
5) Vinyl chloride	1.604	62	17163	10.952	ug/L #	74
13) Acetone	2.636	43	2238	3.083	ug/L	91
20) cis-1,2-Dichloroethene	4.661	96	79419	60.926	ug/L	99
34) Trichloroethene	6.536	95	127007	99.323	ug/L	99

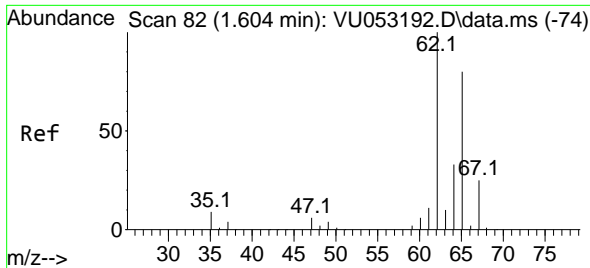
(#) = qualifier out of range (m) = manual integration (+) = signals summed

Data Path : Z:\voasrv\HPCHEM1\MSVOA_U\Data\VU031523\
 Data File : VU053211.D
 Acq On : 15 Mar 2023 19:24
 Operator : JC/MD
 Sample : 01929-19
 Misc : 5.0mL/MSVOA_U/WATER
 ALS Vial : 25 Sample Multiplier: 1

Instrument :
 MSVOA_U
 ClientSampleId :
 EYFF2

Quant Time: Mar 16 04:04:18 2023
 Quant Method : Z:\voasrv\HPCHEM1\MSVOA_U\Method\SFAMULM031523WMA.M
 Quant Title : VOC Analysis
 QLast Update : Thu Mar 16 03:54:54 2023
 Response via : Initial Calibration

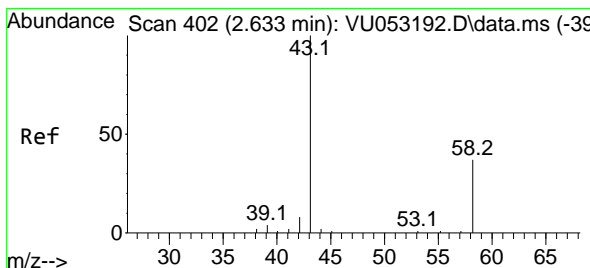
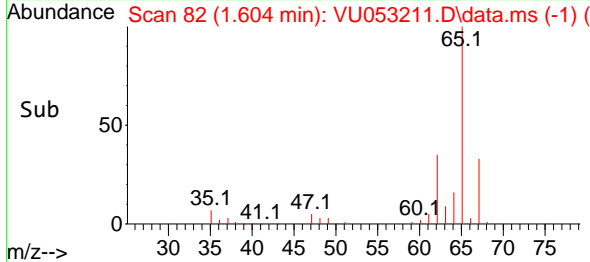
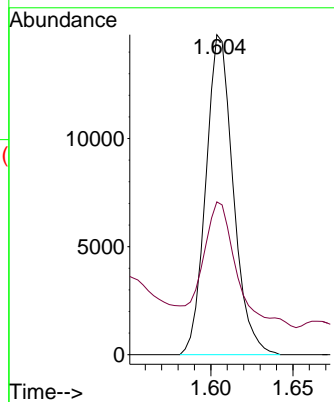
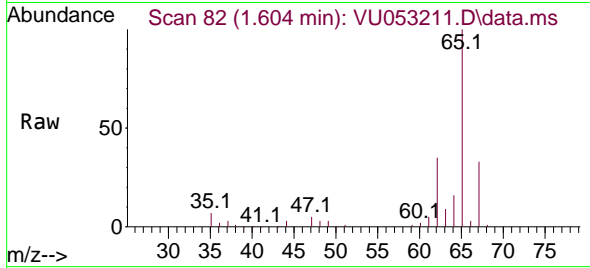




#5
 Vinyl chloride
 Concen: 10.952 ug/L
 RT: 1.604 min Scan# 81
 Delta R.T. -0.000 min
 Lab File: VU053211.D
 Acq: 15 Mar 2023 19:24

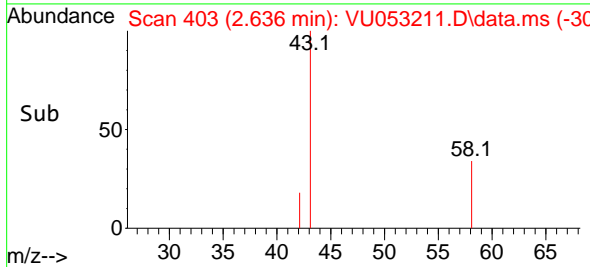
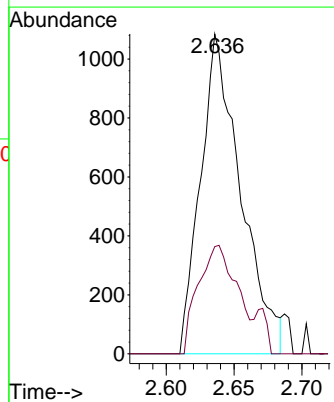
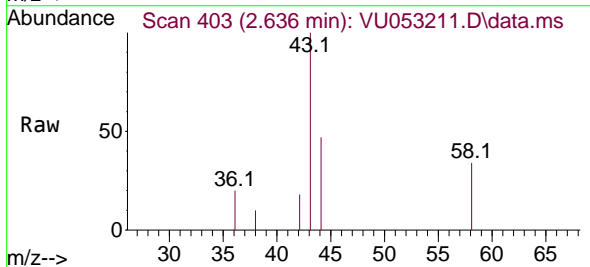
Instrument :
 MSVOA_U
 ClientSampleId :
 EYFF2

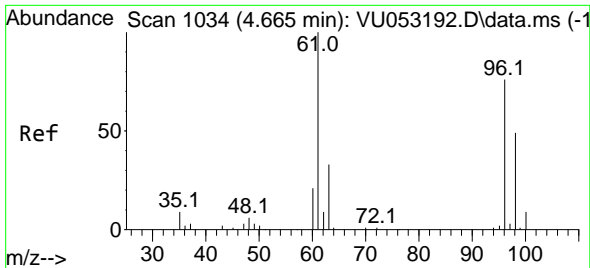
Tgt Ion: 62 Resp: 17163
 Ion Ratio Lower Upper
 62 100
 64 47.8 23.2 43.0#



#13
 Acetone
 Concen: 3.083 ug/L
 RT: 2.636 min Scan# 403
 Delta R.T. 0.003 min
 Lab File: VU053211.D
 Acq: 15 Mar 2023 19:24

Tgt Ion: 43 Resp: 2238
 Ion Ratio Lower Upper
 43 100
 58 32.4 0.0 75.0



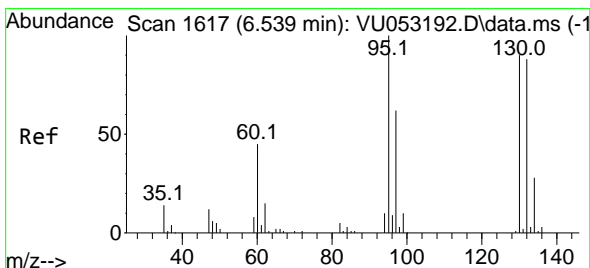
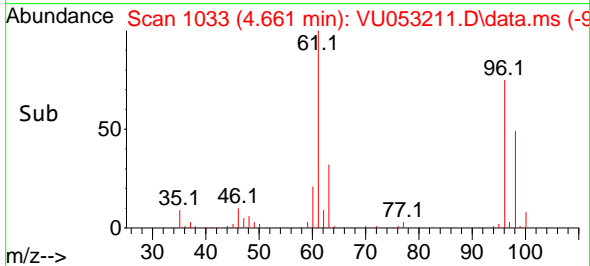
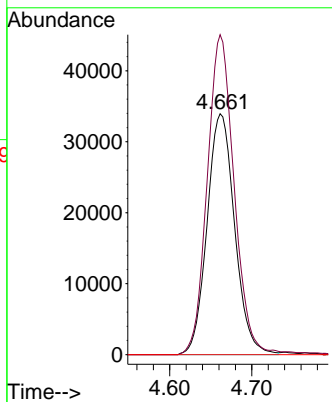
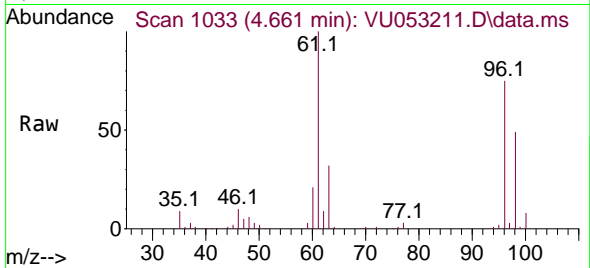


#20
 cis-1,2-Dichloroethene
 Concen: 60.926 ug/L
 RT: 4.661 min Scan# 1033
 Delta R.T. -0.003 min
 Lab File: VU053211.D
 Acq: 15 Mar 2023 19:24

Instrument : MSVOA_U
 ClientSampleId : EYFF2

Tgt Ion: 96 Resp: 79419

Ion	Ratio	Lower	Upper
96	100		
61	132.8	92.5	171.7
68	0.0	0.0	0.0



#34
 Trichloroethene
 Concen: 99.323 ug/L
 RT: 6.536 min Scan# 1616
 Delta R.T. -0.003 min
 Lab File: VU053211.D
 Acq: 15 Mar 2023 19:24

Tgt Ion: 95 Resp: 127007

Ion	Ratio	Lower	Upper
95	100		
97	61.9	43.8	81.3
132	85.2	61.5	114.3
130	90.3	63.3	117.5

