

Data File : VU030127.D  
 Acq On : 15 Mar 2019 21:34  
 Operator : JC/SP  
 Sample : K1917-16  
 Misc : 5.0mL/MSVOA\_U/WATER  
 ALS Vial : 31 Sample Multiplier: 1

Instrument :  
 MSVOA\_U  
 ClientSampleId :  
 C09G7

Quant Time: Mar 16 00:57:25 2019  
 Quant Method : Z:\VOASRV\HPCHEM1\MSVOA\_U\METHOD\SOMULM031319WMA.M  
 Quant Title : VOC Analysis  
 QLast Update : Sat Mar 16 00:52:41 2019  
 Response via : Initial Calibration

Internal Standards	R.T.	QIon	Response	Conc	Units	Dev(Min)
1) 1,4-Difluorobenzene	5.88	114	519307	50.00	ug/L	0.00
28) Chlorobenzene-d5	9.09	117	503248	50.00	ug/L	0.00
60) 1,4-Dichlorobenzene-d4	11.48	152	234677	50.00	ug/L	0.00

System Monitoring Compounds

4) Vinyl Chloride-d3	1.40	65	117525	34.21	ug/L	0.00
Spiked Amount	50.000	Range	60 - 135	Recovery	=	68.42%
7) Chloroethane-d5	1.68	69	107405	38.73	ug/L	0.00
Spiked Amount	50.000	Range	70 - 130	Recovery	=	77.46%
11) 1,1-Dichloroethene-d2	2.27	63	176030	28.39	ug/L	0.00
Spiked Amount	50.000	Range	60 - 125	Recovery	=	56.78%#
21) 2-Butanone-d5	4.17	46	248603	96.60	ug/L	0.00
Spiked Amount	100.000	Range	40 - 130	Recovery	=	96.60%
24) Chloroform-d	4.65	84	270787	43.95	ug/L	0.00
Spiked Amount	50.000	Range	70 - 125	Recovery	=	87.90%
26) 1,2-Dichloroethane-d4	5.31	65	163906	46.05	ug/L	0.00
Spiked Amount	50.000	Range	70 - 125	Recovery	=	92.10%
32) Benzene-d6	5.34	84	566940	43.76	ug/L	0.00
Spiked Amount	50.000	Range	70 - 125	Recovery	=	87.52%
36) 1,2-Dichloropropane-d6	6.33	67	184289	46.48	ug/L	0.00
Spiked Amount	50.000	Range	70 - 120	Recovery	=	92.96%
41) Toluene-d8	7.56	98	505381	41.66	ug/L	0.00
Spiked Amount	50.000	Range	80 - 120	Recovery	=	83.32%
43) trans-1,3-Dichloropropene-	7.85	79	72345	37.67	ug/L	0.00
Spiked Amount	50.000	Range	60 - 125	Recovery	=	75.34%
47) 2-Hexanone-d5	8.31	63	201383	90.78	ug/L	0.00
Spiked Amount	100.000	Range	45 - 130	Recovery	=	90.78%
57) 1,1,2,2-Tetrachloroethane-	10.43	84	283394	46.52	ug/L	0.00
Spiked Amount	50.000	Range	65 - 120	Recovery	=	93.04%
64) 1,2-Dichlorobenzene-d4	11.86	152	216350	47.59	ug/L	0.00
Spiked Amount	50.000	Range	80 - 120	Recovery	=	95.18%

Target Compounds

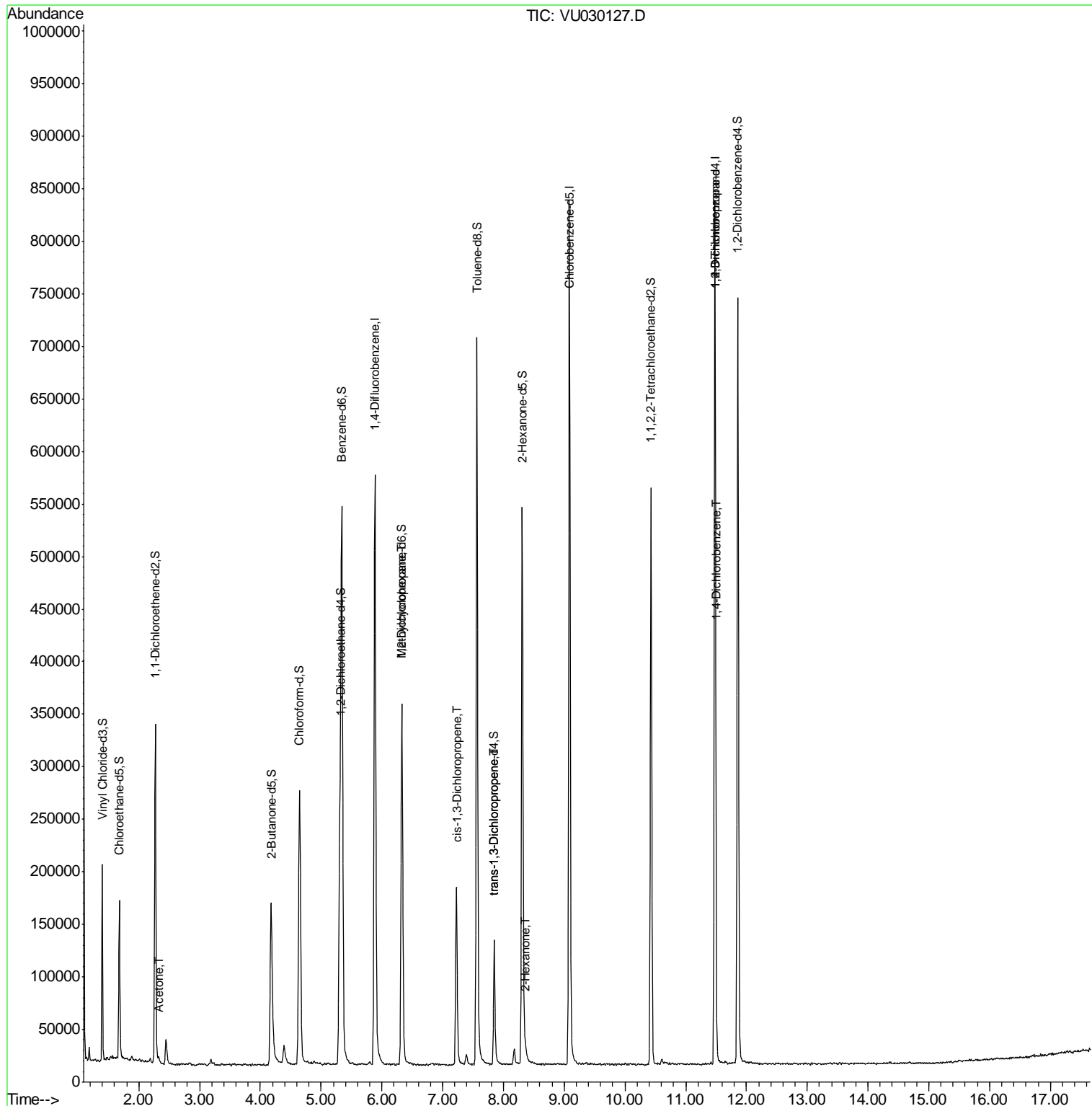
						Qvalue
13) Acetone	2.32	43	3945	1.311	ug/L	77
35) Methylcyclohexane	6.33	83	43297	7.074	ug/L #	22
39) cis-1,3-Dichloropropene	7.22	75	3693	0.626	ug/L #	39
44) trans-1,3-Dichloropropene	7.85	75	2855	0.530	ug/L #	56
48) 2-Hexanone	8.36	43	4527	1.038	ug/L #	39
59) 1,2,3-Trichloropropane	11.48	75	24565	4.980	ug/L	98
63) 1,4-Dichlorobenzene	11.50	146	4075	0.529	ug/L	94

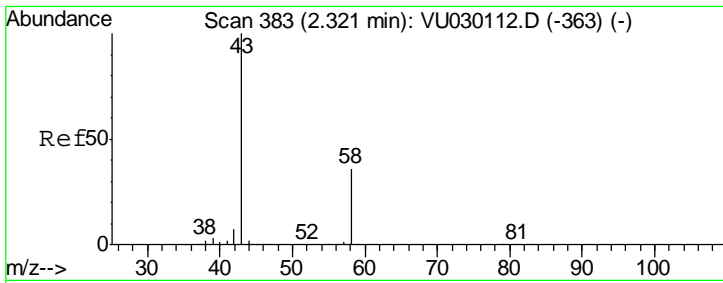
(#) = qualifier out of range (m) = manual integration (+) = signals summed

Data File : VU030127.D  
Acq On : 15 Mar 2019 21:34  
Operator : JC/SP  
Sample : K1917-16  
Misc : 5.0mL/MSVOA\_U/WATER  
ALS Vial : 31 Sample Multiplier: 1

Instrument :  
MSVOA\_U  
Client Sampled :  
C09G7

Quant Time: Mar 16 00:57:25 2019  
Quant Method : Z:\VOASRV\HPCHEM1\MSVOA\_U\METHOD\SOMULM031319WMA.M  
Quant Title : VOC Analysis  
QLast Update : Sat Mar 16 00:52:41 2019  
Response via : Initial Calibration

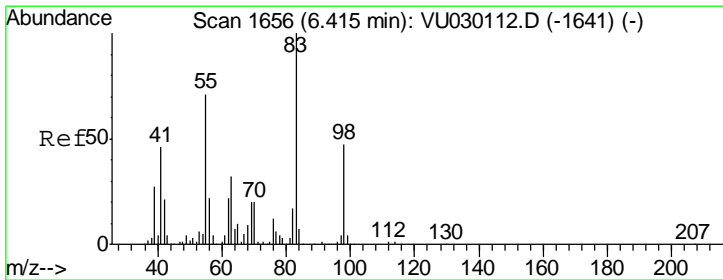
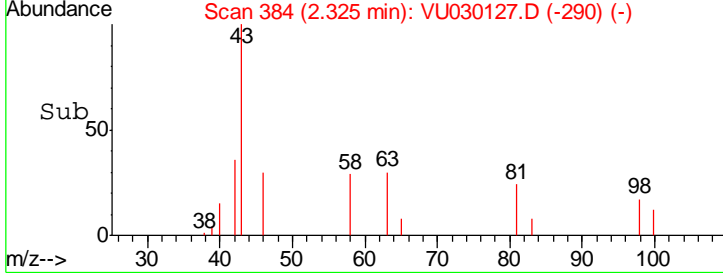
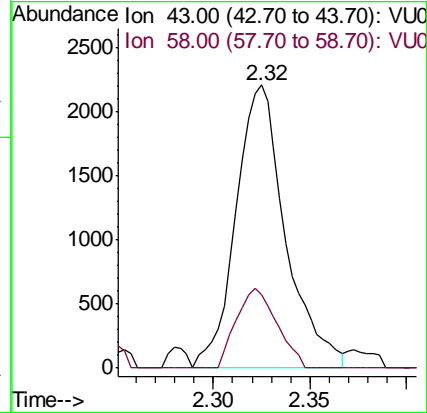
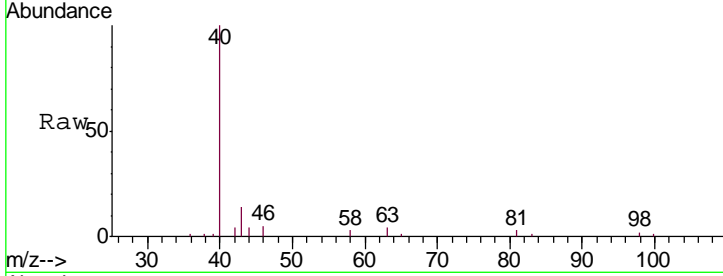




#13  
 Acetone  
 Concen: 1.311 ug/L  
 RT: 2.32 min Scan# 384  
 Delta R.T. 0.00 min  
 Lab File: VU030127.D  
 Acq: 15 Mar 2019 21:34

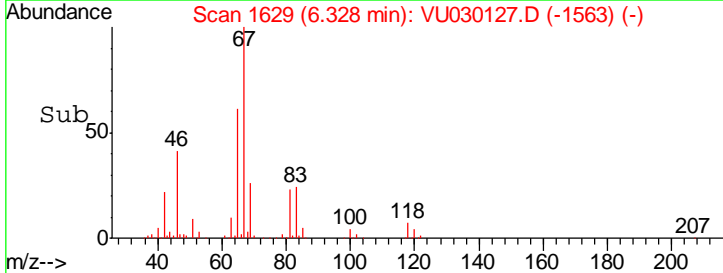
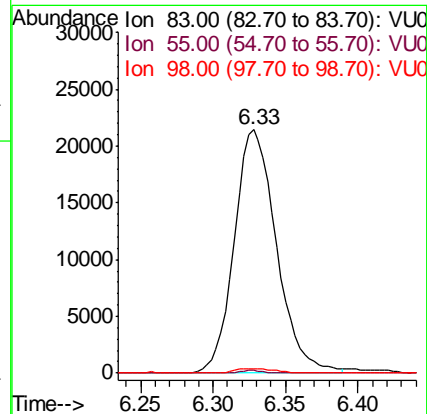
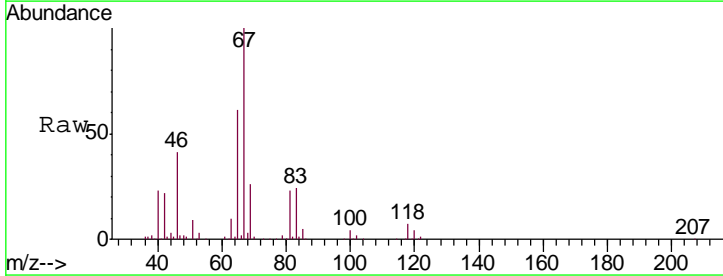
Instrument :  
 MSVOA\_U  
 ClientSampled :  
 C09G7

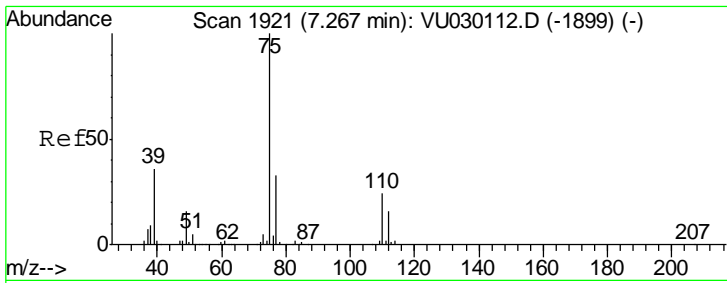
Tgt Ion: 43 Resp: 3945  
 Ion Ratio Lower Upper  
 43 100  
 58 22.9 0.0 73.0



#35  
 Methylcyclohexane  
 Concen: 7.074 ug/L  
 RT: 6.33 min Scan# 1629  
 Delta R.T. -0.09 min  
 Lab File: VU030127.D  
 Acq: 15 Mar 2019 21:34

Tgt Ion: 83 Resp: 43297  
 Ion Ratio Lower Upper  
 83 100  
 55 0.5 56.6 84.8#  
 98 1.7 37.8 56.6#

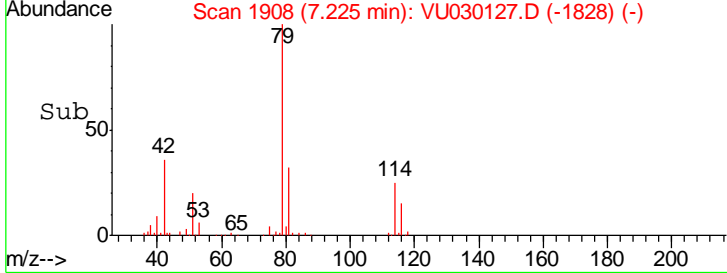
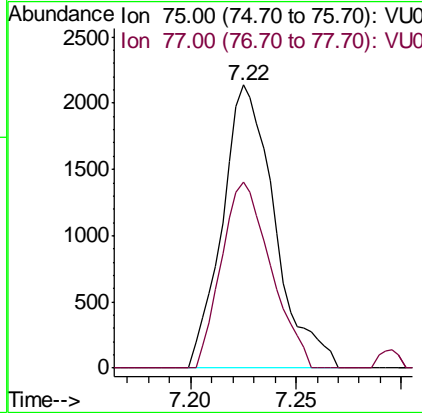
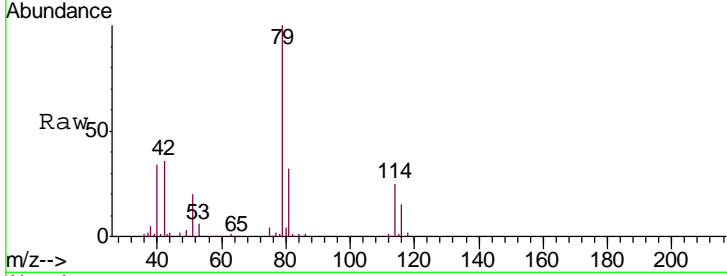




#39  
 cis-1,3-Dichloropropene  
 Concen: 0.626 ug/L  
 RT: 7.22 min Scan# 1908  
 Delta R.T. -0.04 min  
 Lab File: VU030127.D  
 Acq: 15 Mar 2019 21:34

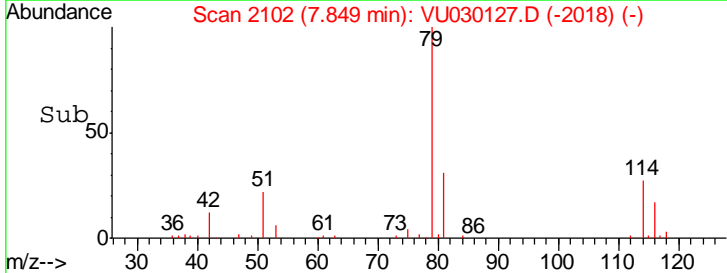
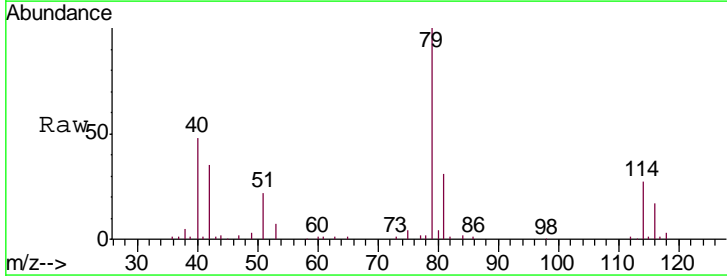
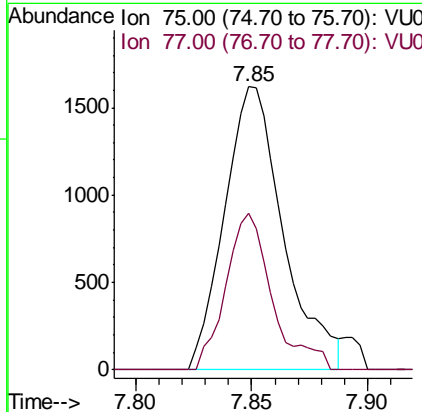
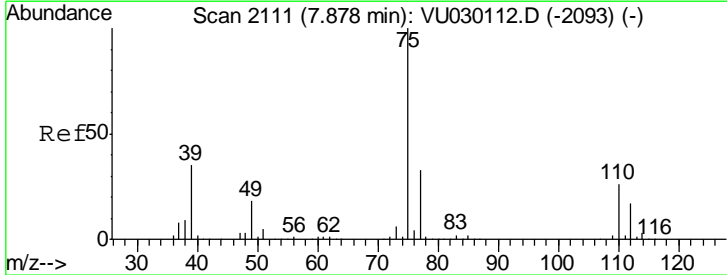
Instrument : MSVOA\_U  
 ClientSampled : C09G7

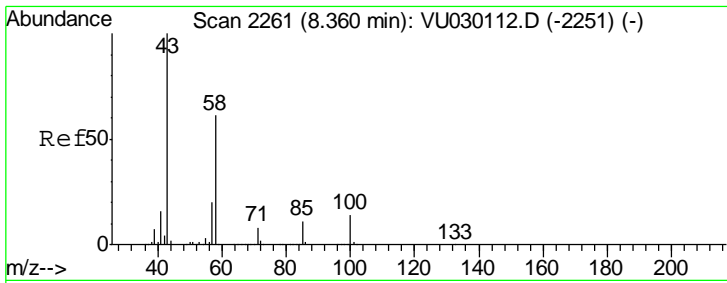
Tgt Ion: 75 Resp: 3693  
 Ion Ratio Lower Upper  
 75 100  
 77 65.7 22.2 41.2#



#44  
 trans-1,3-Dichloropropene  
 Concen: 0.530 ug/L  
 RT: 7.85 min Scan# 2102  
 Delta R.T. -0.03 min  
 Lab File: VU030127.D  
 Acq: 15 Mar 2019 21:34

Tgt Ion: 75 Resp: 2855  
 Ion Ratio Lower Upper  
 75 100  
 77 55.3 21.9 40.7#

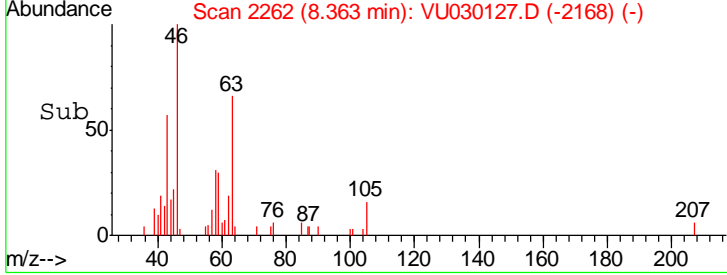
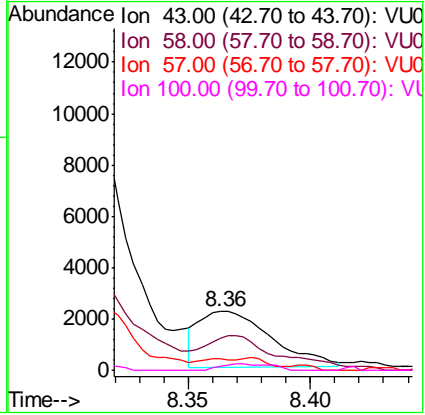
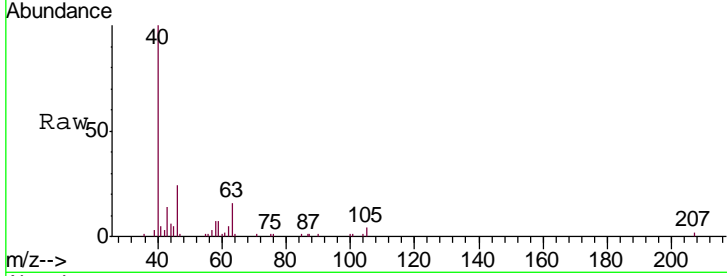




#48  
 2-Hexanone  
 Concen: 1.038 ug/L  
 RT: 8.36 min Scan# 2262  
 Delta R.T. 0.00 min  
 Lab File: VU030127.D  
 Acq: 15 Mar 2019 21:34

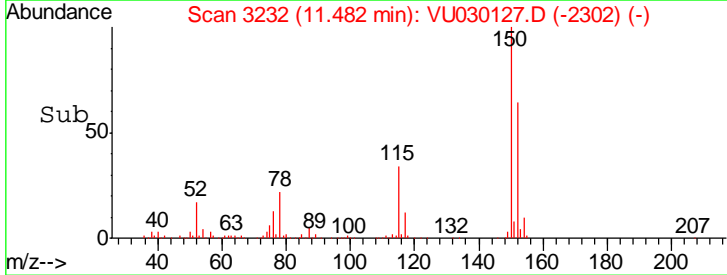
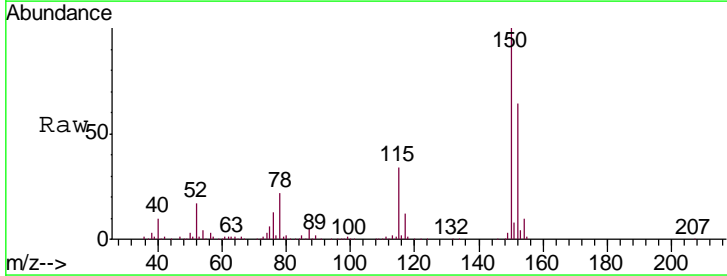
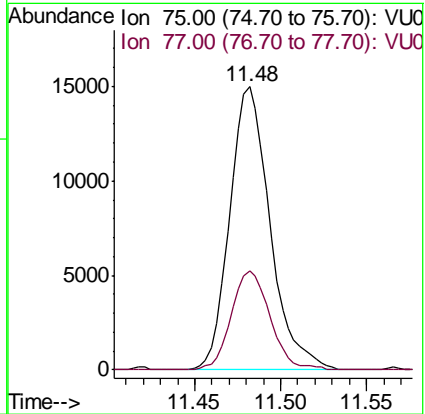
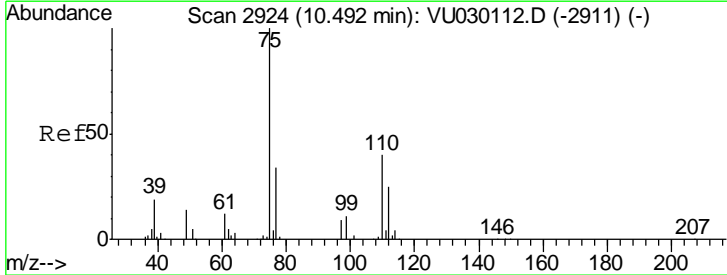
Instrument : MSVOA\_U  
 ClientSampled : C09G7

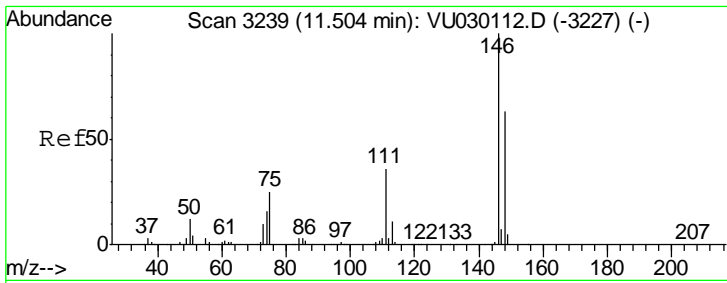
Tgt Ion	Resp	Lower	Upper
43	100		
58	0.0	48.6	72.8#
57	10.6	16.1	24.1#
100	0.0	11.6	17.4#



#59  
 1,2,3-Trichloropropane  
 Concen: 4.980 ug/L  
 RT: 11.48 min Scan# 3232  
 Delta R.T. 0.99 min  
 Lab File: VU030127.D  
 Acq: 15 Mar 2019 21:34

Tgt Ion	Resp	Lower	Upper
75	100		
77	33.6	25.8	38.8





#63  
 1,4-Dichlorobenzene  
 Concen: 0.529 ug/L  
 RT: 11.50 min Scan# 3239  
 Delta R.T. 0.00 min  
 Lab File: VU030127.D  
 Acq: 15 Mar 2019 21:34

Instrument : MSVOA\_U  
 ClientSampled : C09G7

Tgt Ion	Resp	Lower	Upper
146	4075		
111	40.2	25.5	47.3
148	59.6	45.0	83.6

