

Data File : VU030129.D
 Acq On : 15 Mar 2019 22:20
 Operator : JC/SP
 Sample : K1917-18
 Misc : 5.0mL/MSVOA_U/WATER
 ALS Vial : 33 Sample Multiplier: 1

Instrument :
 MSVOA_U
 ClientSampleId :
 C09H2

Quant Time: Mar 16 00:57:43 2019
 Quant Method : Z:\VOASRV\HPCHEM1\MSVOA_U\METHOD\SOMULM031319WMA.M
 Quant Title : VOC Analysis
 QLast Update : Sat Mar 16 00:52:41 2019
 Response via : Initial Calibration

Internal Standards	R.T.	QIon	Response	Conc	Units	Dev(Min)
1) 1,4-Difluorobenzene	5.88	114	528201	50.00	ug/L	0.00
28) Chlorobenzene-d5	9.09	117	507117	50.00	ug/L	0.00
60) 1,4-Dichlorobenzene-d4	11.48	152	237677	50.00	ug/L	0.00

System Monitoring Compounds

4) Vinyl Chloride-d3	1.40	65	125459	35.91	ug/L	0.00
Spiked Amount	50.000	Range	60 - 135	Recovery	=	71.82%
7) Chloroethane-d5	1.68	69	115873	41.09	ug/L	0.00
Spiked Amount	50.000	Range	70 - 130	Recovery	=	82.18%
11) 1,1-Dichloroethene-d2	2.27	63	186686	29.60	ug/L	0.00
Spiked Amount	50.000	Range	60 - 125	Recovery	=	59.20%#
21) 2-Butanone-d5	4.17	46	258400	98.71	ug/L	0.00
Spiked Amount	100.000	Range	40 - 130	Recovery	=	98.71%
24) Chloroform-d	4.65	84	284837	45.45	ug/L	0.00
Spiked Amount	50.000	Range	70 - 125	Recovery	=	90.90%
26) 1,2-Dichloroethane-d4	5.31	65	174017	48.06	ug/L	0.00
Spiked Amount	50.000	Range	70 - 125	Recovery	=	96.12%
32) Benzene-d6	5.34	84	602189	46.13	ug/L	0.00
Spiked Amount	50.000	Range	70 - 125	Recovery	=	92.26%
36) 1,2-Dichloropropane-d6	6.33	67	194920	48.79	ug/L	0.00
Spiked Amount	50.000	Range	70 - 120	Recovery	=	97.58%
41) Toluene-d8	7.56	98	537146	43.94	ug/L	0.00
Spiked Amount	50.000	Range	80 - 120	Recovery	=	87.88%
43) trans-1,3-Dichloropropene-	7.85	79	75793	39.16	ug/L	0.00
Spiked Amount	50.000	Range	60 - 125	Recovery	=	78.32%
47) 2-Hexanone-d5	8.31	63	214616	96.00	ug/L	0.00
Spiked Amount	100.000	Range	45 - 130	Recovery	=	96.00%
57) 1,1,2,2-Tetrachloroethane-	10.43	84	299312	48.75	ug/L	0.00
Spiked Amount	50.000	Range	65 - 120	Recovery	=	97.50%
64) 1,2-Dichlorobenzene-d4	11.86	152	228696	49.67	ug/L	0.00
Spiked Amount	50.000	Range	80 - 120	Recovery	=	99.34%

Target Compounds

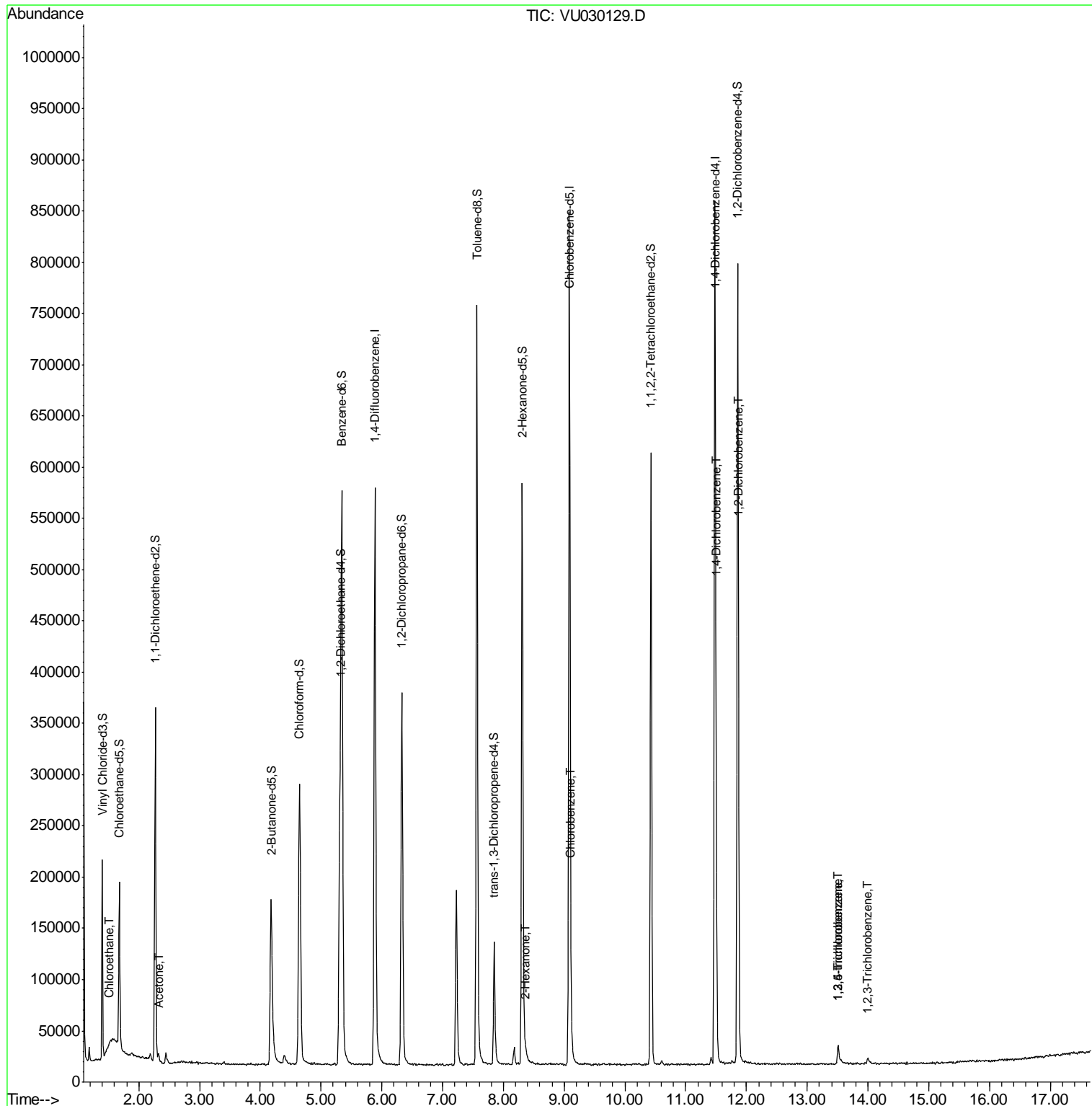
Target Compounds	R.T.	QIon	Response	Conc	Units	Qvalue
8) Chloroethane	1.51	64	23937	9.048	ug/L #	52
13) Acetone	2.32	43	6824	2.230	ug/L	96
48) 2-Hexanone	8.37	43	4344	0.988	ug/L #	51
51) Chlorobenzene	9.12	112	16221	1.525	ug/L	97
63) 1,4-Dichlorobenzene	11.50	146	65309	8.368	ug/L	98
65) 1,2-Dichlorobenzene	11.88	146	10822	1.401	ug/L	95
67) 1,3,5-Trichlorobenzene	13.51	180	8911	1.496	ug/L	93
68) 1,2,4-trichlorobenzene	13.51	180	8911	1.635	ug/L	92
70) 1,2,3-Trichlorobenzene	13.99	180	2713	0.479	ug/L #	80

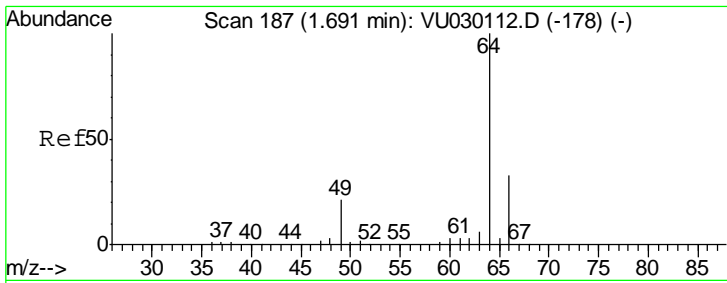
(#) = qualifier out of range (m) = manual integration (+) = signals summed

Data File : VU030129.D
Acq On : 15 Mar 2019 22:20
Operator : JC/SP
Sample : K1917-18
Misc : 5.0mL/MSVOA_U/WATER
ALS Vial : 33 Sample Multiplier: 1

Instrument :
MSVOA_U
ClientSampled :
C09H2

Quant Time: Mar 16 00:57:43 2019
Quant Method : Z:\VOASRV\HPCHEM1\MSVOA_U\METHOD\SOMULM031319WMA.M
Quant Title : VOC Analysis
QLast Update : Sat Mar 16 00:52:41 2019
Response via : Initial Calibration

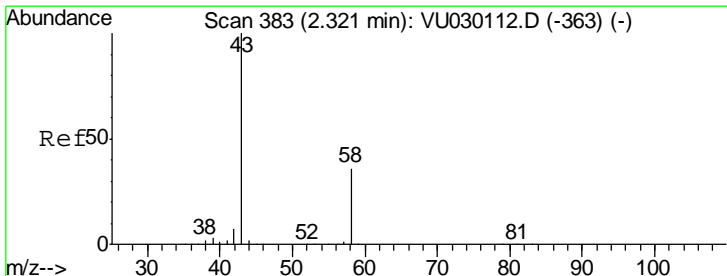
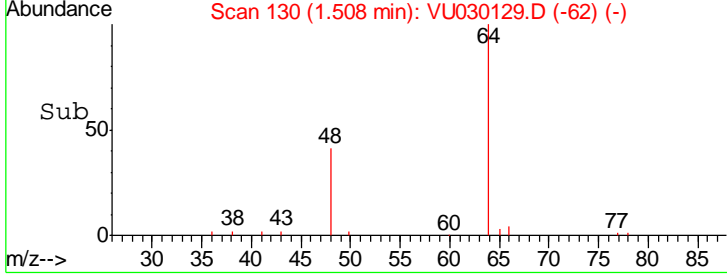
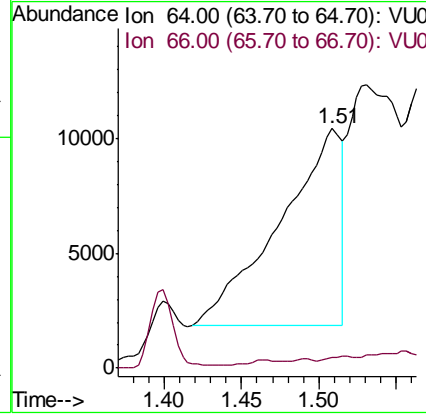
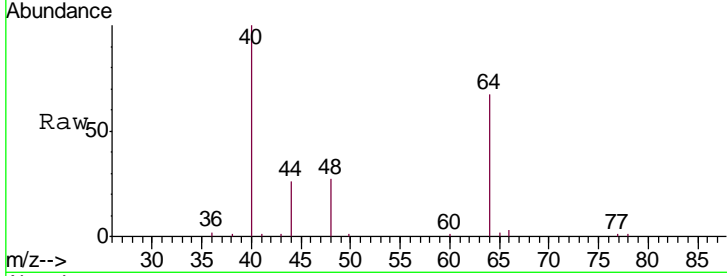




#8
 Chloroethane
 Concen: 9.048 ug/L
 RT: 1.51 min Scan# 130
 Delta R.T. -0.18 min
 Lab File: VU030129.D
 Acq: 15 Mar 2019 22:20

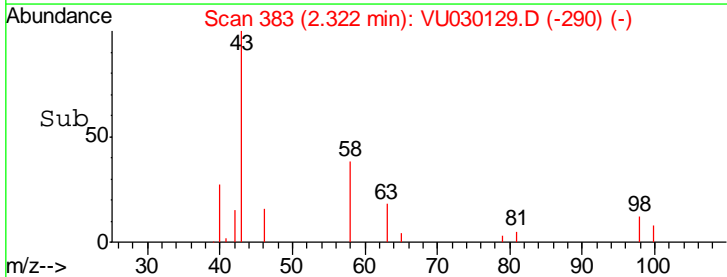
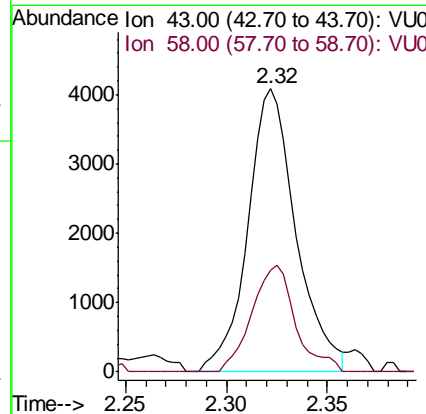
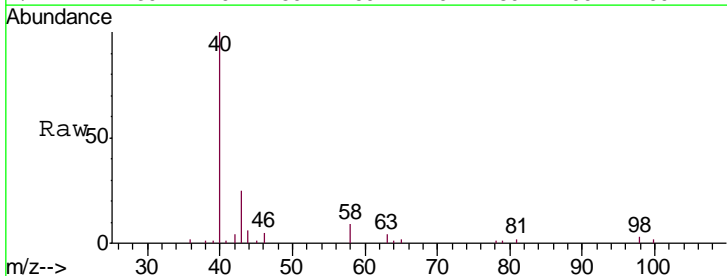
Instrument : MSVOA_U
 ClientSampled : C09H2

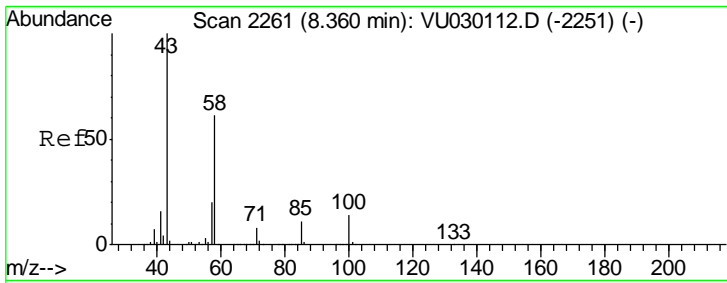
Tgt Ion	Resp	Lower	Upper
64	23937		
66	4.2	21.3	39.6#



#13
 Acetone
 Concen: 2.230 ug/L
 RT: 2.32 min Scan# 383
 Delta R.T. 0.00 min
 Lab File: VU030129.D
 Acq: 15 Mar 2019 22:20

Tgt Ion	Resp	Lower	Upper
43	6824		
58	34.2	0.0	73.0

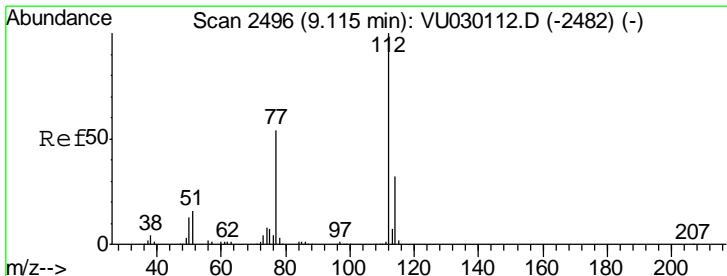
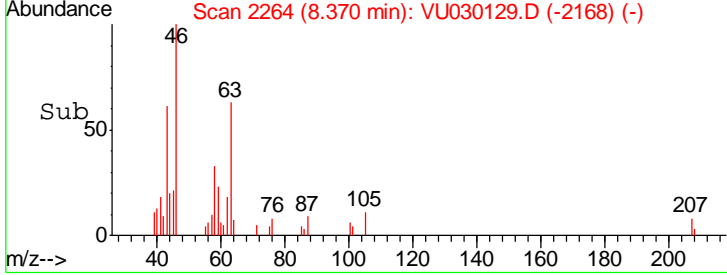
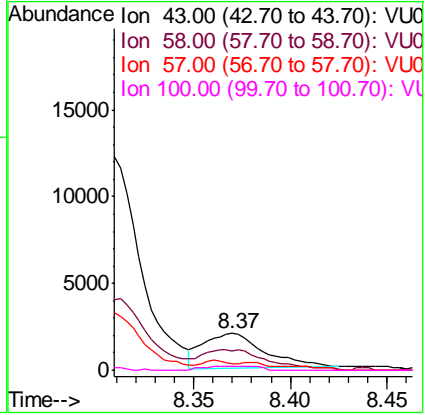
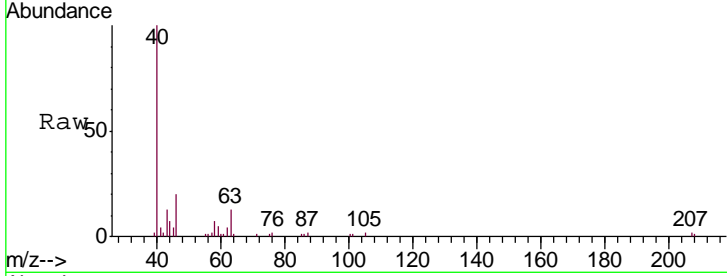




#48
 2-Hexanone
 Concen: 0.988 ug/L
 RT: 8.37 min Scan# 2264
 Delta R.T. 0.01 min
 Lab File: VU030129.D
 Acq: 15 Mar 2019 22:20

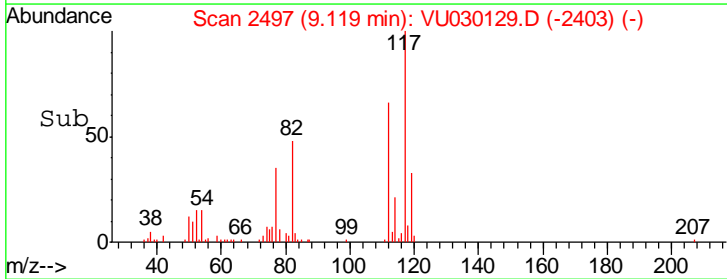
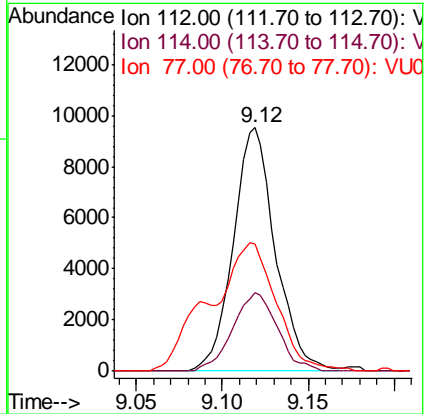
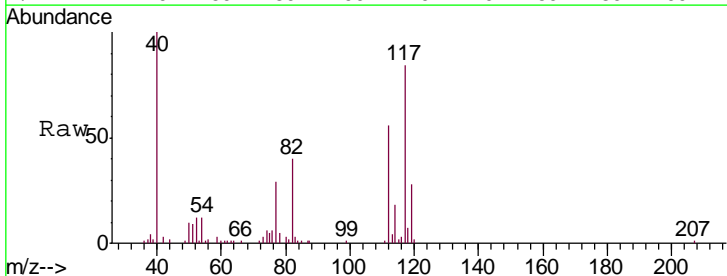
Instrument : MSVOA_U
 ClientSampled : C09H2

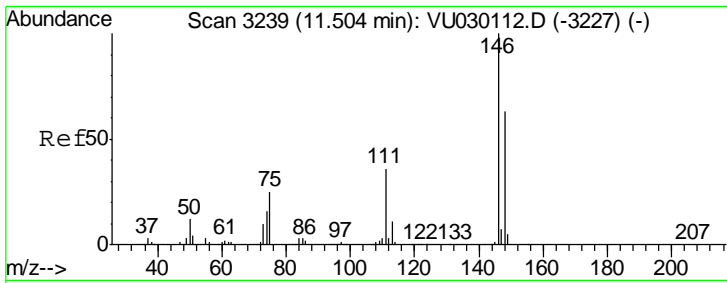
Tgt Ion	Resp	Lower	Upper
43	100		
58	11.5	48.6	72.8#
57	9.7	16.1	24.1#
100	6.7	11.6	17.4#



#51
 Chlorobenzene
 Concen: 1.525 ug/L
 RT: 9.12 min Scan# 2497
 Delta R.T. 0.00 min
 Lab File: VU030129.D
 Acq: 15 Mar 2019 22:20

Tgt Ion	Resp	Lower	Upper
112	100		
114	32.0	22.5	41.9
77	52.2	44.6	66.8

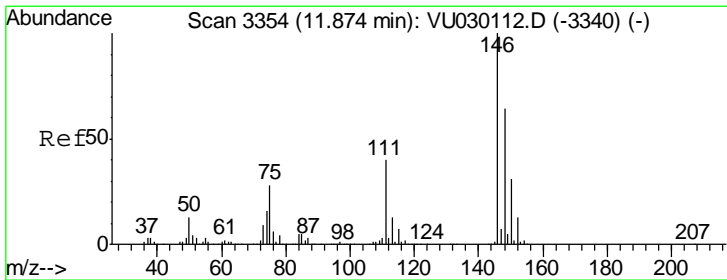
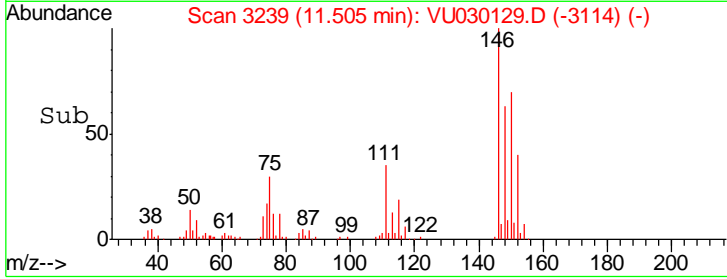
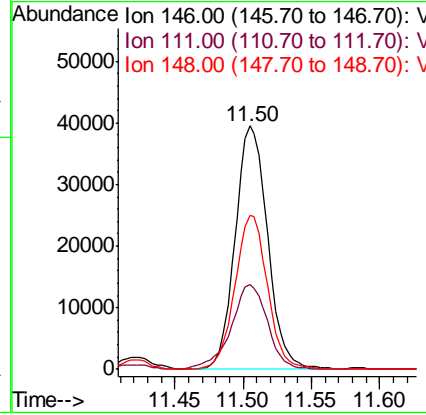
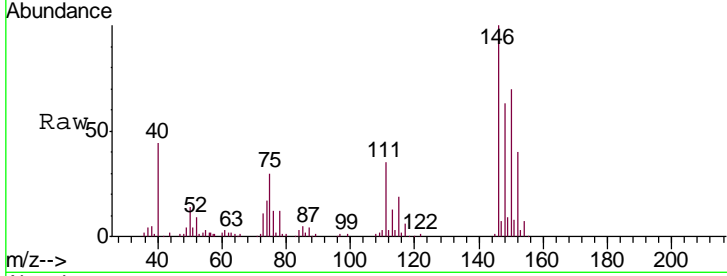




#63
 1,4-Dichlorobenzene
 Concen: 8.368 ug/L
 RT: 11.50 min Scan# 3239
 Delta R.T. 0.00 min
 Lab File: VU030129.D
 Acq: 15 Mar 2019 22:20

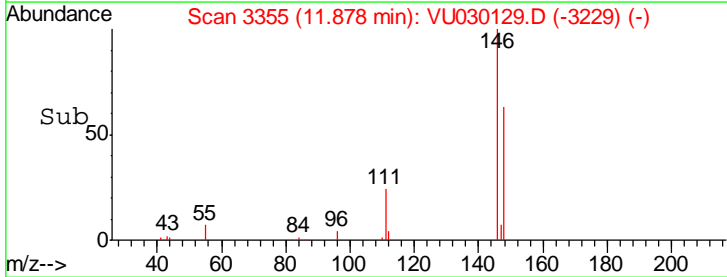
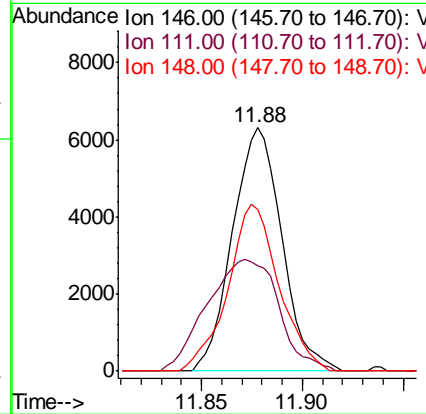
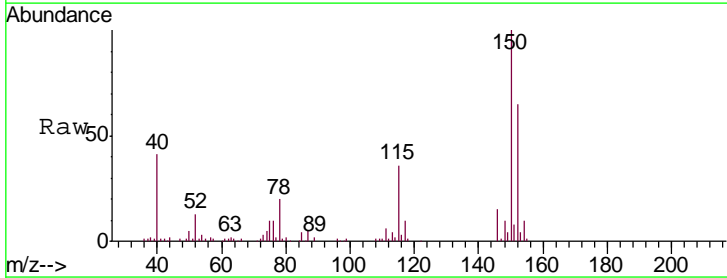
Instrument :
 MSVOA_U
 ClientSampled :
 C09H2

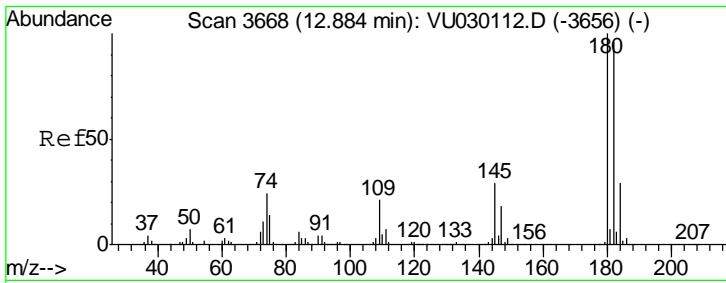
Tgt Ion	Resp	Lower	Upper
146	100		
111	34.9	25.5	47.3
148	63.4	45.0	83.6



#65
 1,2-Dichlorobenzene
 Concen: 1.401 ug/L
 RT: 11.88 min Scan# 3355
 Delta R.T. 0.00 min
 Lab File: VU030129.D
 Acq: 15 Mar 2019 22:20

Tgt Ion	Resp	Lower	Upper
146	100		
111	43.2	30.9	46.3
148	66.4	51.2	76.8

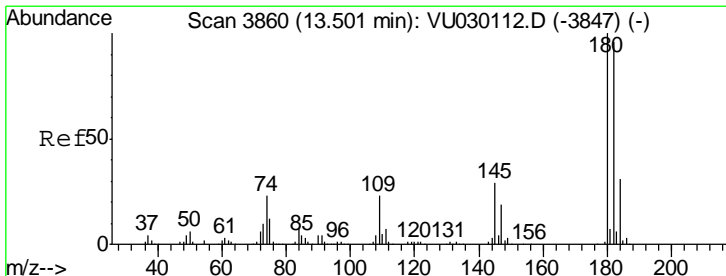
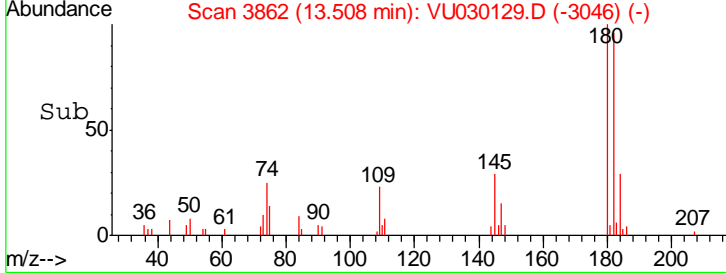
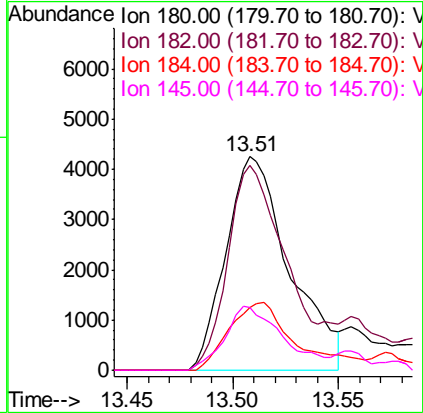
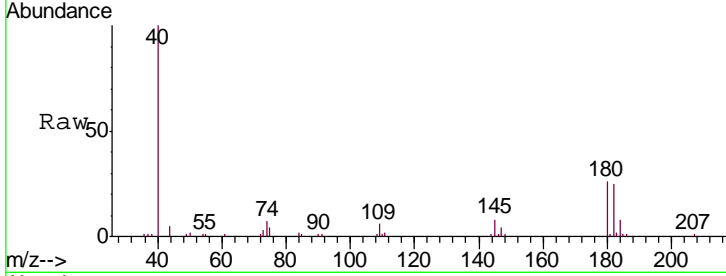




#67
 1,3,5-Trichlorobenzene
 Concen: 1.496 ug/L
 RT: 13.51 min Scan# 3862
 Delta R.T. 0.62 min
 Lab File: VU030129.D
 Acq: 15 Mar 2019 22:20

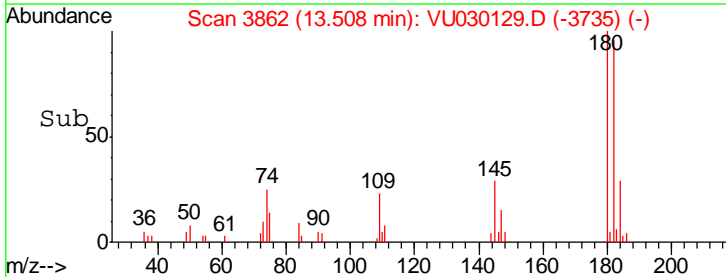
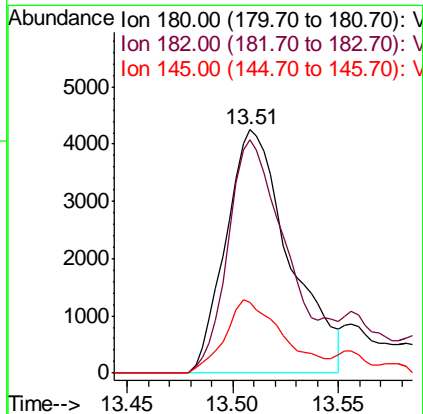
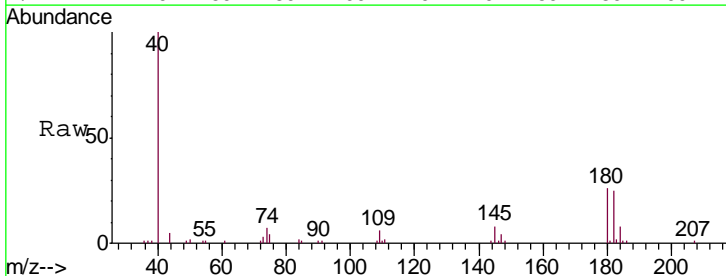
Instrument : MSVOA_U
 ClientSampled : C09H2

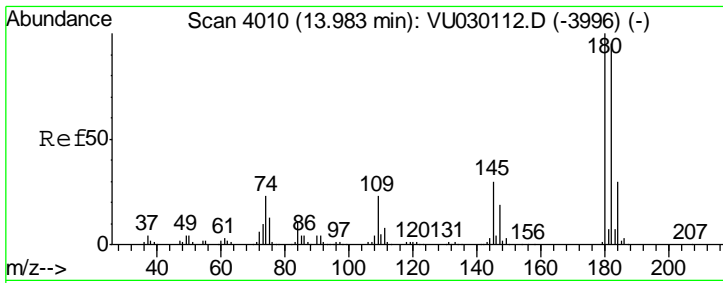
Tgt Ion	Resp	Lower	Upper
180	100		
182	85.5	76.3	114.5
184	33.2	24.7	37.1
145	27.3	22.3	33.5



#68
 1,2,4-trichlorobenzene
 Concen: 1.635 ug/L
 RT: 13.51 min Scan# 3862
 Delta R.T. 0.01 min
 Lab File: VU030129.D
 Acq: 15 Mar 2019 22:20

Tgt Ion	Resp	Lower	Upper
180	100		
182	85.5	76.1	114.1
145	27.3	23.0	34.4





#70
 1,2,3-Trichlorobenzene
 Concen: 0.479 ug/L
 RT: 13.99 min Scan# 4013
 Delta R.T. 0.01 min
 Lab File: VU030129.D
 Acq: 15 Mar 2019 22:20

Instrument : MSVOA_U
 ClientSampleId : C09H2

Tgt Ion: 180 Resp: 2713

Ion	Ratio	Lower	Upper
180	100		
182	115.8	75.9	113.9#
145	39.0	24.0	36.0#

