

Data Path : Z:\voasrv\HPCHEM1\MSVOA_U\Data\VU031623\
 Data File : VU053222.D
 Acq On : 16 Mar 2023 13:33
 Operator : JC/MD
 Sample : 01930-01 200X
 Misc : 5.0mL/MSVOA_U/WATER
 ALS Vial : 9 Sample Multiplier: 1

Instrument :
 MSVOA_U
 ClientSampleId :
 EYFF3

Quant Time: Mar 17 02:41:20 2023
 Quant Method : Z:\voasrv\HPCHEM1\MSVOA_U\Method\SFAMULM031523WMA.M
 Quant Title : VOC Analysis
 QLast Update : Fri Mar 17 02:34:44 2023
 Response via : Initial Calibration

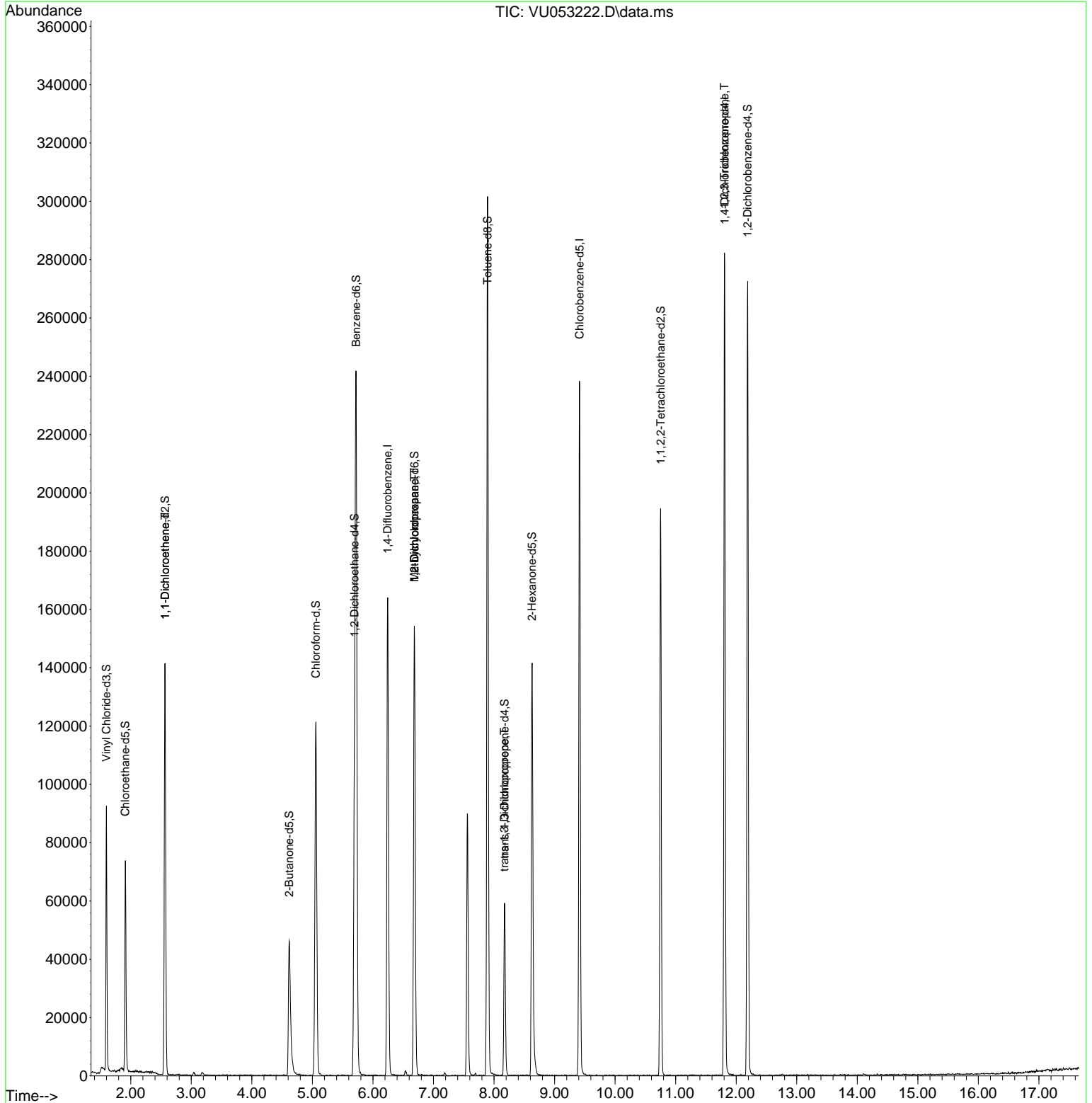
Compound	R.T.	QIon	Response	Conc	Units	Dev(Min)
Internal Standards						
1) 1,4-Difluorobenzene	6.244	114	130812	50.000	ug/L	0.00
28) Chlorobenzene-d5	9.414	117	125281	50.000	ug/L	0.00
58) 1,4-Dichlorobenzene-d4	11.809	152	69849	50.000	ug/L	0.00
System Monitoring Compounds						
4) Vinyl Chloride-d3	1.598	65	62120	51.474	ug/L	0.00
Spiked Amount	50.000	Range 60 - 135	Recovery	=	102.940%	
7) Chloroethane-d5	1.909	69	52464	53.745	ug/L	0.00
Spiked Amount	50.000	Range 70 - 130	Recovery	=	107.480%	
11) 1,1-Dichloroethene-d2	2.565	63	82825	39.618	ug/L	0.00
Spiked Amount	50.000	Range 60 - 125	Recovery	=	79.240%	
21) 2-Butanone-d5	4.617	46	68540	122.453	ug/L	0.00
Spiked Amount	100.000	Range 40 - 130	Recovery	=	122.450%	
24) Chloroform-d	5.057	84	107546	54.106	ug/L	0.00
Spiked Amount	50.000	Range 70 - 125	Recovery	=	108.220%	
26) 1,2-Dichloroethane-d4	5.697	65	70578	57.174	ug/L	0.00
Spiked Amount	50.000	Range 70 - 125	Recovery	=	114.340%	
32) Benzene-d6	5.723	84	226929	55.845	ug/L	0.00
Spiked Amount	50.000	Range 70 - 125	Recovery	=	111.700%	
36) 1,2-Dichloropropane-d6	6.684	67	75351	57.455	ug/L	0.00
Spiked Amount	50.000	Range 70 - 120	Recovery	=	114.900%	
41) Toluene-d8	7.893	98	201771	53.332	ug/L	0.00
Spiked Amount	50.000	Range 80 - 120	Recovery	=	106.660%	
43) trans-1,3-Dichloroprop...	8.173	79	33979	52.512	ug/L	0.00
Spiked Amount	50.000	Range 60 - 125	Recovery	=	105.020%	
47) 2-Hexanone-d5	8.626	63	50885	124.104	ug/L	0.00
Spiked Amount	100.000	Range 45 - 130	Recovery	=	124.100%	
56) 1,1,2,2-Tetrachloroeth...	10.752	84	97596	57.446	ug/L	0.00
Spiked Amount	50.000	Range 65 - 120	Recovery	=	114.900%	
66) 1,2-Dichlorobenzene-d4	12.189	152	66080	48.859	ug/L	0.00
Spiked Amount	50.000	Range 80 - 120	Recovery	=	97.720%	
Target Compounds						
12) 1,1-Dichloroethene	2.565	96	531	0.553	ug/L #	1
35) Methylcyclohexane	6.684	83	16264	8.193	ug/L #	21
37) 1,2-Dichloropropane	6.684	63	8020	6.618	ug/L #	90
44) trans-1,3-Dichloropropene	8.170	75	1618	0.889	ug/L	98
60) 1,2,3-Trichloropropane	11.806	75	10109	7.283	ug/L #	70

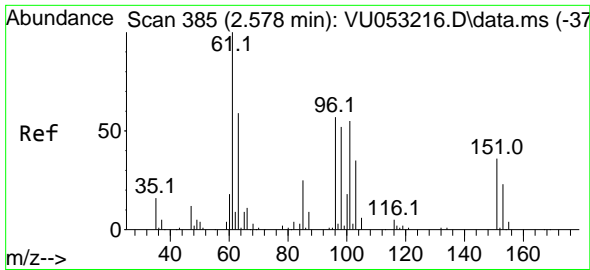
(#) = qualifier out of range (m) = manual integration (+) = signals summed

Data Path : Z:\voasrv\HPCHEM1\MSVOA_U\Data\VU031623\
 Data File : VU053222.D
 Acq On : 16 Mar 2023 13:33
 Operator : JC/MD
 Sample : 01930-01 200X
 Misc : 5.0mL/MSVOA_U/WATER
 ALS Vial : 9 Sample Multiplier: 1

Instrument :
 MSVOA_U
 ClientSampleId :
 EYFF3

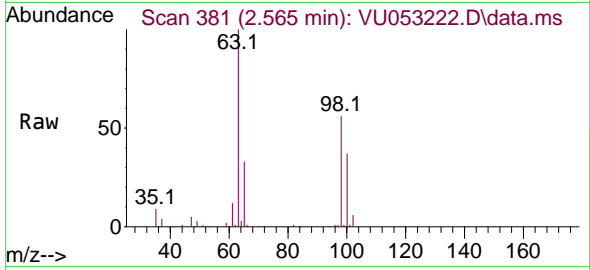
Quant Time: Mar 17 02:41:20 2023
 Quant Method : Z:\voasrv\HPCHEM1\MSVOA_U\Method\SFAMULM031523WMA.M
 Quant Title : VOC Analysis
 QLast Update : Fri Mar 17 02:34:44 2023
 Response via : Initial Calibration





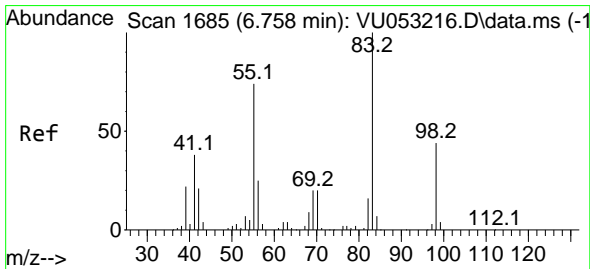
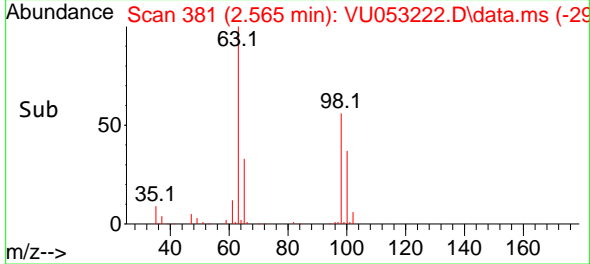
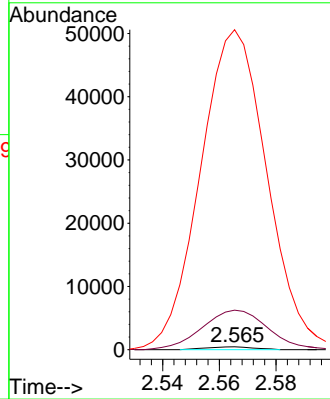
#12
 1,1-Dichloroethene
 Concen: 0.553 ug/L
 RT: 2.565 min Scan# 381
 Delta R.T. -0.013 min
 Lab File: VU053222.D
 Acq: 16 Mar 2023 13:33

Instrument : MSVOA_U
 ClientSampleId : EYFF3



Tgt Ion: 96 Resp: 531

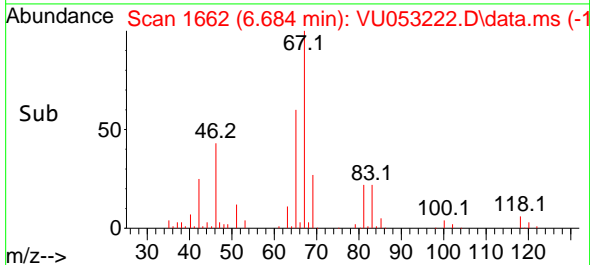
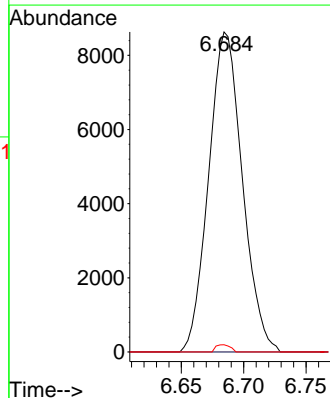
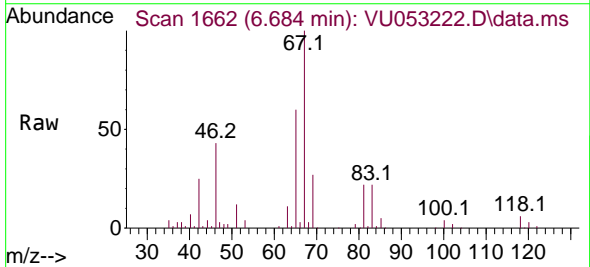
Ion	Ratio	Lower	Upper
96	100		
61	1367.6	122.2	226.9#
63	11074.0	89.9	166.9#

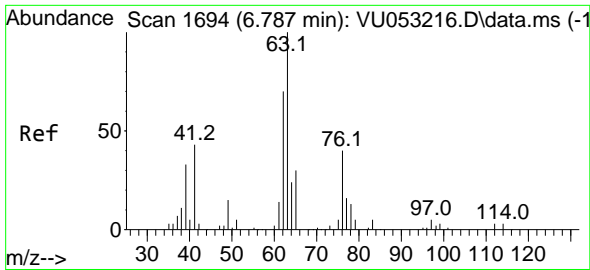


#35
 Methylcyclohexane
 Concen: 8.193 ug/L
 RT: 6.684 min Scan# 1662
 Delta R.T. -0.074 min
 Lab File: VU053222.D
 Acq: 16 Mar 2023 13:33

Tgt Ion: 83 Resp: 16264

Ion	Ratio	Lower	Upper
83	100		
55	0.0	58.2	87.4#
98	1.0	35.4	53.2#

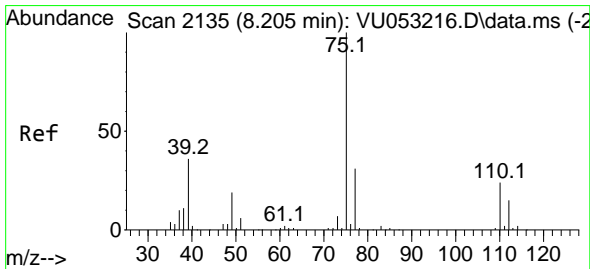
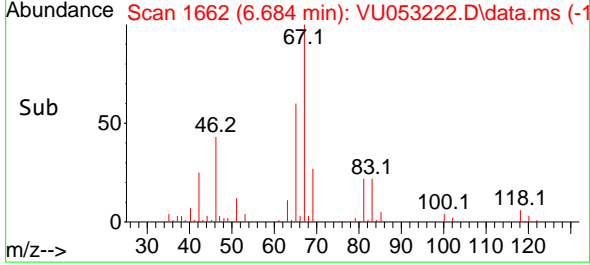
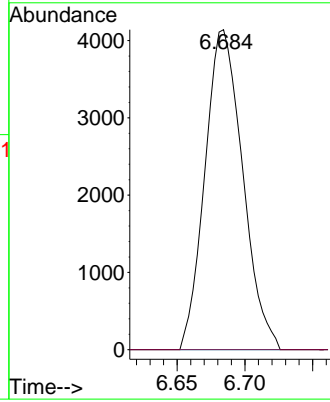
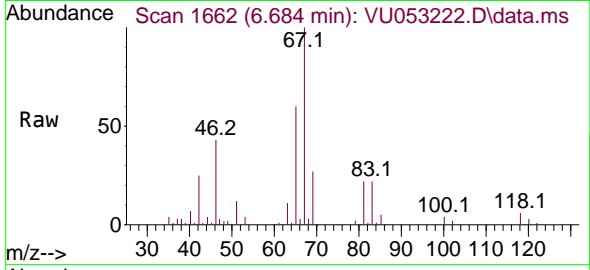




#37
 1,2-Dichloropropane
 Concen: 6.618 ug/L
 RT: 6.684 min Scan# 11
 Delta R.T. -0.103 min
 Lab File: VU053222.D
 Acq: 16 Mar 2023 13:33

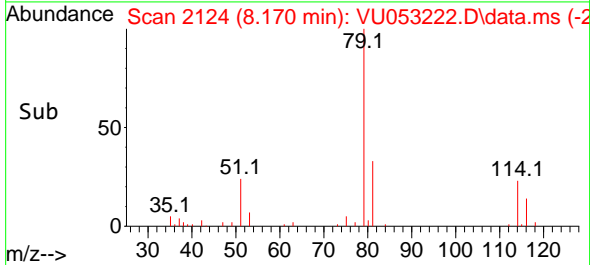
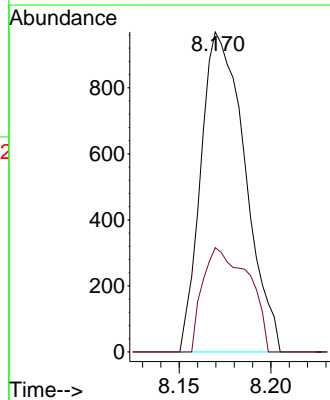
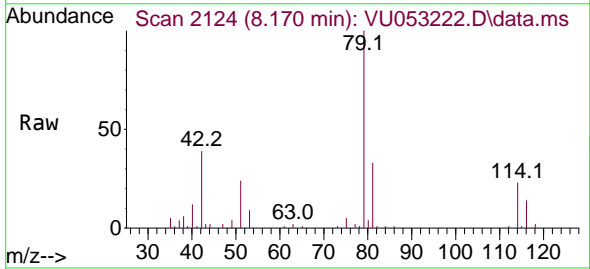
Instrument : MSVOA_U
 ClientSampleId : EYFF3

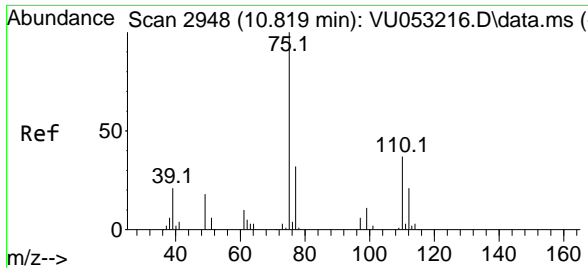
Tgt Ion: 63 Resp: 8020
 Ion Ratio Lower Upper
 63 100
 112 0.0 2.6 3.8#



#44
 trans-1,3-Dichloropropene
 Concen: 0.889 ug/L
 RT: 8.170 min Scan# 2124
 Delta R.T. -0.035 min
 Lab File: VU053222.D
 Acq: 16 Mar 2023 13:33

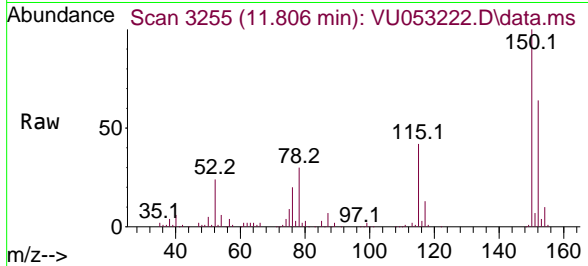
Tgt Ion: 75 Resp: 1618
 Ion Ratio Lower Upper
 75 100
 77 32.6 22.0 40.8





#60
 1,2,3-Trichloropropane
 Concen: 7.283 ug/L
 RT: 11.806 min Scan# 31
 Delta R.T. 0.987 min
 Lab File: VU053222.D
 Acq: 16 Mar 2023 13:33

Instrument :
 MSVOA_U
 ClientSampleId :
 EYFF3



Tgt Ion: 75 Resp: 10109

Ion	Ratio	Lower	Upper
75	100		
77	33.6	26.6	40.0
110	1.9	28.6	42.8#

