

Data Path : Z:\VOASRV\HPCHEM1\MSVOA U\DATA\VU031919\
 Data File : VU030201.D
 Acq On : 19 Mar 2019 18:17
 Operator : JC/SP
 Sample : K1986-03
 Misc : 4.54µ/5mL/100uL/5.0mL/MSVOA_U/MEOH
 ALS Vial : 21 Sample Multiplier: 1

Instrument :
 MSVOA_U
 ClientSampleId :
 BF0B0

Integration Parameters: LSCINT.P

Integrator: RTE
 Smoothing : OFF
 Sampling : 1
 Start Thrs: 0.2
 Stop Thrs : 0

Filtering: 5
 Min Area: 0 % of largest Peak
 Max Peaks: 100
 Peak Location: TOP

If leading or trailing edge < 100 prefer < Baseline drop else tangent >
 Peak separation: 5

Method : Z:\VOASRV\HPCHEM1\MSVOA_U\METHOD\SOMULM031919WMA.M
 Title : VOC Analysis

Signal : TIC

peak #	R.T. min	first scan	max scan	last scan	PK TY	peak height	corr. area	corr. % max.	% of total
1	1.395	88	95	110	rVB	210786	258405	14.72%	1.717%
2	1.640	166	171	185	rVB	102314	124965	7.12%	0.830%
3	2.231	344	355	369	rBV	404998	630219	35.90%	4.187%
4	2.511	433	442	444	rBV	1530	2508	0.14%	0.017%
5	3.045	605	608	609	rBV	898	476	0.03%	0.003%
6	3.514	751	754	760	rVB	1510	1489	0.08%	0.010%
7	4.035	911	916	920	rBV	1605	1563	0.09%	0.010%
8	4.087	927	932	941	rVB	1804	2549	0.15%	0.017%
9	4.125	941	944	948	rBV2	737	654	0.04%	0.004%
10	4.190	952	964	997	rBV	120505	402681	22.94%	2.675%
11	4.640	1090	1104	1131	rVB	266089	660860	37.64%	4.390%
12	5.045	1226	1230	1232	rBV	1167	957	0.05%	0.006%
13	5.328	1296	1318	1344	rBV2	624975	1755709	100.00%	11.663%
14	5.527	1375	1380	1385	rBV	1938	2592	0.15%	0.017%
15	5.800	1461	1465	1467	rBV	1786	1210	0.07%	0.008%
16	5.878	1475	1489	1525	rBV	604908	1276182	72.69%	8.478%
17	6.324	1615	1628	1653	rBV	358959	756978	43.12%	5.029%
18	6.553	1695	1699	1700	rBV	1464	938	0.05%	0.006%
19	6.604	1712	1715	1717	rBV	1223	545	0.03%	0.004%
20	6.633	1722	1724	1726	rBV	996	659	0.04%	0.004%
21	6.707	1744	1747	1754	rBV	1701	1657	0.09%	0.011%
22	6.765	1759	1765	1766	rBV	909	914	0.05%	0.006%
23	6.836	1782	1787	1790	rBV2	1762	1648	0.09%	0.011%
24	7.019	1841	1844	1850	rBV2	1535	1341	0.08%	0.009%
25	7.103	1868	1870	1872	rBV	970	587	0.03%	0.004%
26	7.141	1879	1882	1885	rBV	1265	923	0.05%	0.006%
27	7.225	1895	1908	1929	rBV	204608	402450	22.92%	2.674%
28	7.501	1988	1994	1997	rBV2	1906	2677	0.15%	0.018%
29	7.559	2000	2012	2036	rVV	801631	1475680	84.05%	9.803%
30	7.849	2092	2102	2131	rVB	135273	276326	15.74%	1.836%
31	8.180	2197	2205	2215	rBV4	4925	9988	0.57%	0.066%
32	8.324	2238	2250	2276	rBV	531303	1035206	58.96%	6.877%
33	8.707	2367	2369	2372	rBV	1681	1101	0.06%	0.007%
34	8.803	2394	2399	2403	rBV2	1756	1869	0.11%	0.012%

Data Path : Z:\VOASRV\HPCHEM1\MSVOA U\DATA\VU031919\
 Data File : VU030201.D
 Acq On : 19 Mar 2019 18:17
 Operator : JC/SP
 Sample : K1986-03
 Misc : 4.54µ/5mL/100uL/5.0mL/MSVOA_U/MEOH
 ALS Vial : 21 Sample Multiplier: 1

Instrument :
 MSVOA_U
 ClientSampleId :
 BF0B0

Integration Parameters: LSCINT.P

Integrator: RTE
 Smoothing : OFF
 Sampling : 1
 Start Thrs: 0.2
 Stop Thrs : 0

Filtering: 5
 Min Area: 0 % of largest Peak
 Max Peaks: 100
 Peak Location: TOP

If leading or trailing edge < 100 prefer < Baseline drop else tangent >
 Peak separation: 5

Method : Z:\VOASRV\HPCHEM1\MSVOA_U\METHOD\SOMULM031919WMA.M
 Title : VOC Analysis

35	9.032	2467	2470	2471	rBV	790	427	0.02%	0.003%
36	9.090	2475	2488	2517	rVV	889915	1633282	93.03%	10.850%
37	9.382	2576	2579	2583	rBV	1895	1602	0.09%	0.011%
38	9.447	2595	2599	2600	rBV	1621	1062	0.06%	0.007%
39	9.485	2604	2611	2614	rBV	1882	2531	0.14%	0.017%
40	9.524	2620	2623	2624	rBV	1124	578	0.03%	0.004%
41	9.643	2658	2660	2663	rBV	561	259	0.01%	0.002%
42	9.675	2666	2670	2671	rBV2	1293	937	0.05%	0.006%
43	9.729	2683	2687	2692	rVB	1598	1467	0.08%	0.010%
44	9.755	2692	2695	2696	rBV	1040	578	0.03%	0.004%
45	9.996	2760	2770	2774	rBV	1961	3073	0.18%	0.020%
46	10.016	2774	2776	2778	rVV	614	285	0.02%	0.002%
47	10.032	2778	2781	2785	rVV2	898	681	0.04%	0.005%
48	10.212	2834	2837	2839	rBV	1039	530	0.03%	0.004%
49	10.289	2858	2861	2862	rBV	589	244	0.01%	0.002%
50	10.305	2863	2866	2869	rBV	917	683	0.04%	0.005%
51	10.356	2879	2882	2883	rBV	724	479	0.03%	0.003%
52	10.434	2894	2906	2926	rBV	647834	1052802	59.96%	6.994%
53	10.697	2984	2988	2991	rVB	1162	864	0.05%	0.006%
54	10.717	2991	2994	2996	rBV	1462	995	0.06%	0.007%
55	10.762	3005	3008	3010	rVB	1355	734	0.04%	0.005%
56	10.778	3010	3013	3017	rBV	1705	1295	0.07%	0.009%
57	10.819	3024	3026	3028	rBV	608	291	0.02%	0.002%
58	11.061	3098	3101	3104	rBV	1302	849	0.05%	0.006%
59	11.131	3120	3123	3126	rBV2	1213	984	0.06%	0.007%
60	11.160	3129	3132	3134	rBV	821	487	0.03%	0.003%
61	11.289	3167	3172	3175	rBV	1082	1046	0.06%	0.007%
62	11.482	3220	3232	3256	rBV	1080945	1733664	98.74%	11.517%
63	11.858	3337	3349	3368	rBV	927944	1507505	85.86%	10.015%
64	12.459	3533	3536	3537	rBV	1460	850	0.05%	0.006%
65	12.517	3552	3554	3556	rBV	989	377	0.02%	0.003%
66	12.842	3652	3655	3658	rBV2	1283	945	0.05%	0.006%
67	12.951	3685	3689	3694	rBV2	1563	1915	0.11%	0.013%
68	13.343	3808	3811	3814	rBV	1785	1583	0.09%	0.011%
69	13.434	3834	3839	3841	rBV	1693	1590	0.09%	0.011%
70	13.498	3855	3859	3861	rBV	1304	1097	0.06%	0.007%

Data Path : Z:\VOASRV\HPCHEM1\MSVOA U\DATA\VU031919\
Data File : VU030201.D
Acq On : 19 Mar 2019 18:17
Operator : JC/SP
Sample : K1986-03
Misc : 4.54g/5mL/100uL/5.0mL/MSVOA_U/MEOH
ALS Vial : 21 Sample Multiplier: 1

Instrument :
MSVOA_U
ClientSampleId :
BF0B0

Integration Parameters: LSCINT.P
Integrator: RTE
Smoothing : OFF Filtering: 5
Sampling : 1 Min Area: 0 % of largest Peak
Start Thrs: 0.2 Max Peaks: 100
Stop Thrs : 0 Peak Location: TOP

If leading or trailing edge < 100 prefer < Baseline drop else tangent >
Peak separation: 5

Method : Z:\VOASRV\HPCHEM1\MSVOA_U\METHOD\SOMULM031919WMA.M
Title : VOC Analysis

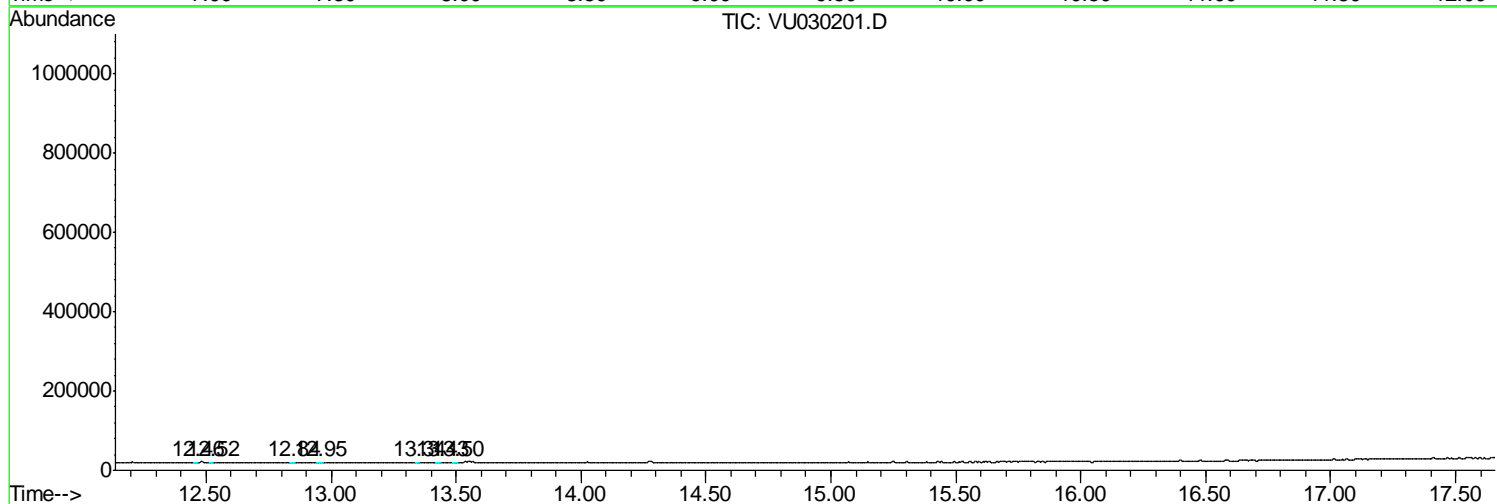
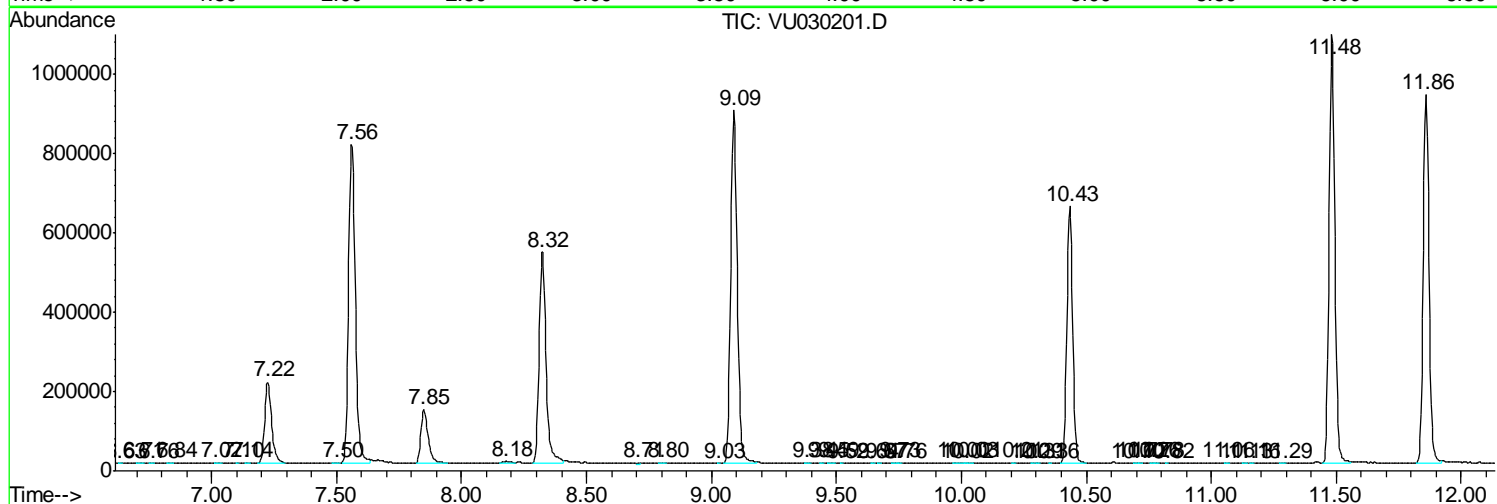
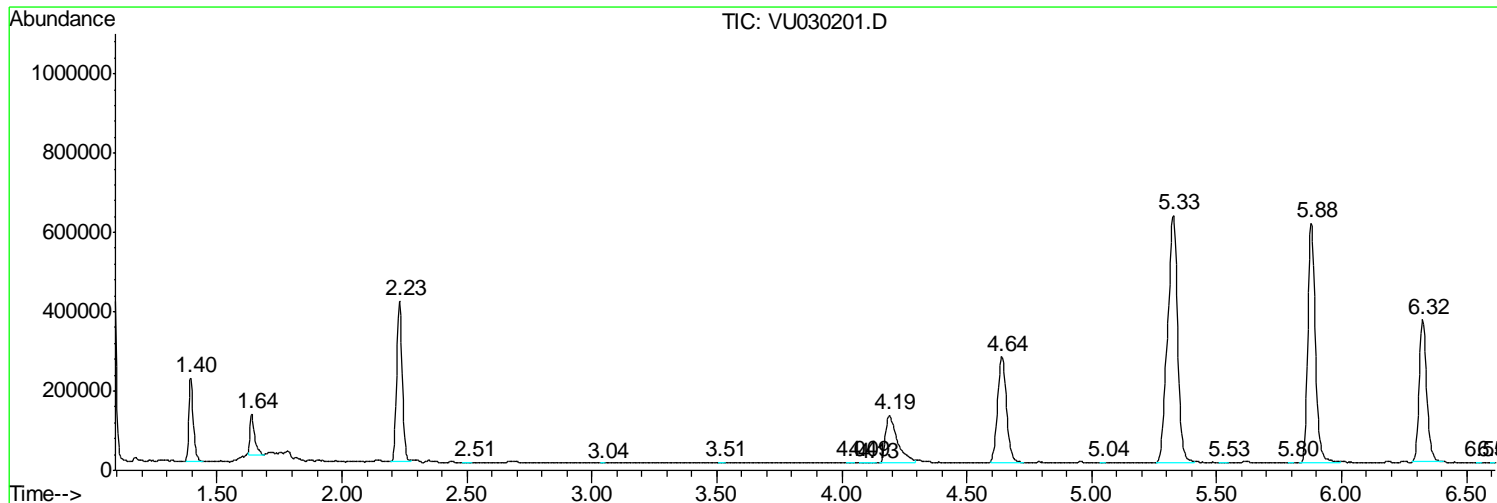
Sum of corrected areas: 15053077

Data Path : Z:\VOASRV\HPCHEM1\MSVOA U\DATA\VU031919\
 Data File : VU030201.D
 Acq On : 19 Mar 2019 18:17
 Operator : JC/SP
 Sample : K1986-03
 Misc : 4.54µ/5mL/100uL/5.0mL/MSVOA_U/MEOH
 ALS Vial : 21 Sample Multiplier: 1

Instrument :
 MSVOA_U
 ClientSampled :
 BFOB0

Quant Method : Z:\VOASRV\HPCHEM1\MSVOA_U\METHOD\SOMULM031919WMA.M
 Quant Title : VOC Analysis

TIC Library : C:\DATABASE\NIST11.L
 TIC Integration Parameters: LSCINT.P



Data Path : Z:\VOASRV\HPCHEM1\MSVOA_U\DATA\VU031919\
Data File : VU030201.D
Acq On : 19 Mar 2019 18:17
Operator : JC/SP
Sample : K1986-03
Misc : 4.54g/5mL/100uL/5.0mL/MSVOA_U/MEOH
ALS Vial : 21 Sample Multiplier: 1

Instrument :
MSVOA_U
ClientSampleId :
BF0B0

Quant Method : Z:\VOASRV\HPCHEM1\MSVOA_U\METHOD\SOMULM031919WMA.M
Quant Title : VOC Analysis

TIC Library : C:\DATABASE\NIST11.L
TIC Integration Parameters: LSCINT.P

No Library Search Compounds Detected

Data Path : Z:\VOASRV\HPCHEM1\MSVOA_U\DATA\VU031919\
Data File : VU030201.D
Acq On : 19 Mar 2019 18:17
Operator : JC/SP
Sample : K1986-03
Misc : 4.54g/5mL/100uL/5.0mL/MSVOA_U/MEOH
ALS Vial : 21 Sample Multiplier: 1

Instrument :
MSVOA_U
ClientSampleId :
BF0B0

Quant Method : Z:\VOASRV\HPCHEM1\MSVOA_U\METHOD\SOMULM031919WMA.M
Quant Title : VOC Analysis

TIC Library : C:\DATABASE\NIST11.L
TIC Integration Parameters: LSCINT.P

TIC Top Hit name	RT	EstConc	Units	Response	--Internal Standard--			
					#	RT	Resp	Conc
