

Data Path : Z:\voasrv\HPCHEM1\MSVOA\_U\Data\VU031924\  
 Data File : VU058159.D  
 Acq On : 19 Mar 2024 16:50  
 Operator : MD/SY  
 Sample : P1796-11  
 Misc : 25.0mL/MSVOA\_U/WATER  
 ALS Vial : 10 Sample Multiplier: 1

Instrument :  
 MSVOA\_U  
 ClientSampleId :

Quant Time: Mar 20 05:21:54 2024  
 Quant Method : Z:\voasrv\HPCHEM1\MSVOA\_U\Method\SFAMUTRO22924WMA.M  
 Quant Title : TRACE VOA SFAM1.0  
 QLast Update : Wed Mar 20 05:19:57 2024  
 Response via : Initial Calibration

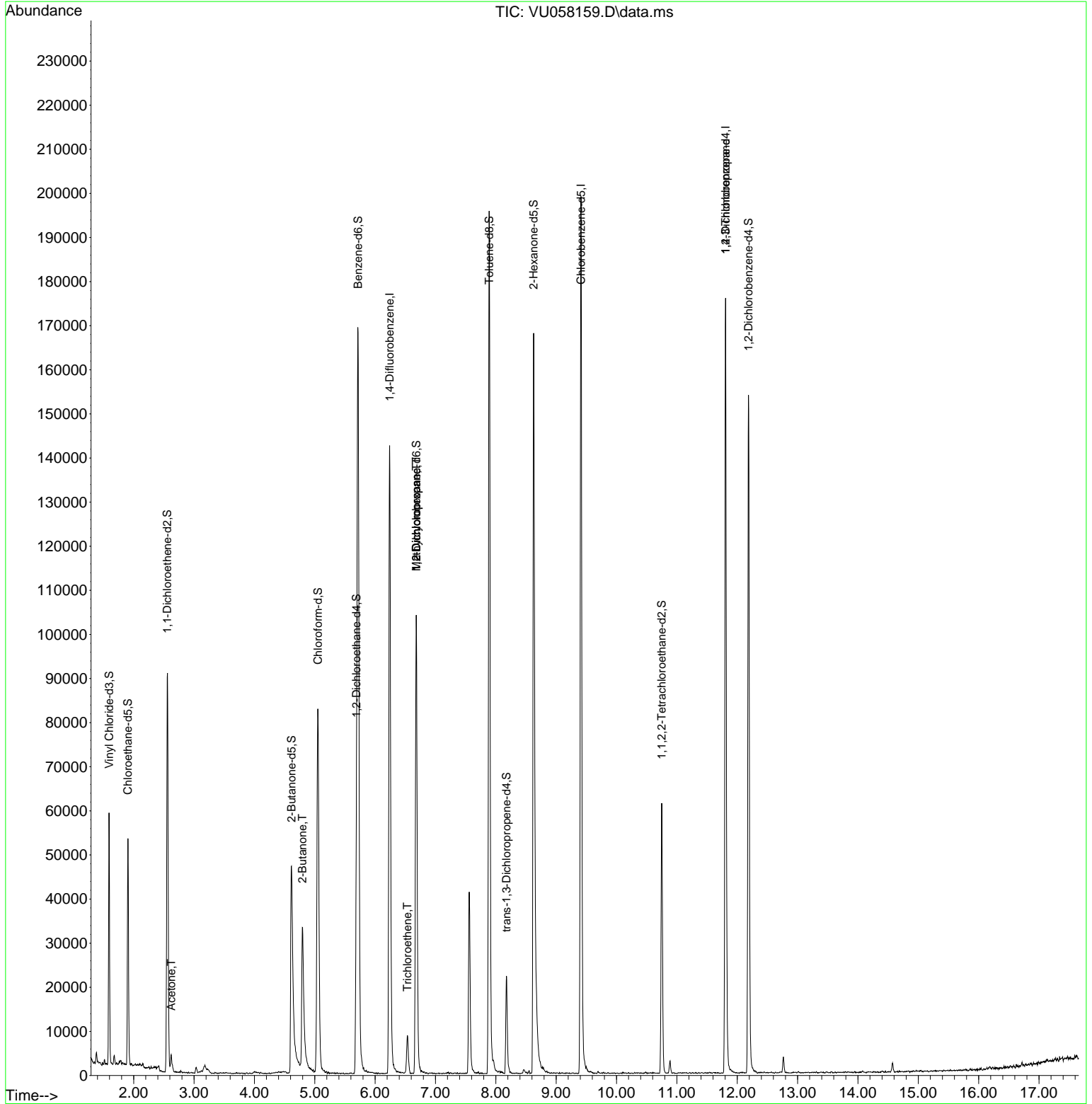
Compound	R. T.	QI on	Response	Conc	Units	Dev(Min)
-----						
Internal Standards						
1) 1,4-Difluorobenzene	6.242	114	118578	5.000	ug/L	0.00
28) Chlorobenzene-d5	9.412	117	113052	5.000	ug/L	0.00
58) 1,4-Dichlorobenzene-d4	11.807	152	46657	5.000	ug/L	0.00
System Monitoring Compounds						
4) Vinyl Chloride-d3	1.592	65	39323	4.609	ug/L	0.00
Spike Amount	5.000	Range	40 - 130	Recovery	=	92.200%
7) Chloroethane-d5	1.904	69	36200	5.162	ug/L	0.00
Spike Amount	5.000	Range	65 - 130	Recovery	=	103.200%
11) 1,1-Dichloroethene-d2	2.557	65	17963	4.866	ug/L	0.00
Spike Amount	5.000	Range	60 - 125	Recovery	=	97.400%
20) 2-Butanone-d5	4.615	46	78260	55.673	ug/L	0.00
Spike Amount	50.000	Range	40 - 130	Recovery	=	111.340%
24) Chloroform-d	5.052	84	80744	5.004	ug/L	0.00
Spike Amount	5.000	Range	70 - 125	Recovery	=	100.000%
26) 1,2-Dichloroethane-d4	5.692	65	39535	5.407	ug/L	0.00
Spike Amount	5.000	Range	70 - 130	Recovery	=	108.200%
32) Benzene-d6	5.717	84	162614	4.936	ug/L	0.00
Spike Amount	5.000	Range	70 - 125	Recovery	=	98.800%
36) 1,2-Dichloropropane-d6	6.682	67	52449	5.237	ug/L	0.00
Spike Amount	5.000	Range	60 - 140	Recovery	=	104.800%
41) Toluene-d8	7.891	98	135485	4.539	ug/L	0.00
Spike Amount	5.000	Range	70 - 130	Recovery	=	90.800%
43) trans-1,3-Dichloropropene	8.177	79	14026	4.072	ug/L	0.00
Spike Amount	5.000	Range	55 - 130	Recovery	=	81.400%
46) 2-Hexanone-d5	8.627	63	62528	54.073	ug/L	0.00
Spike Amount	50.000	Range	45 - 130	Recovery	=	108.140%
56) 1,1,2,2-Tetrachloroethene	10.749	84	32704	5.325	ug/L	0.00
Spike Amount	5.000	Range	65 - 120	Recovery	=	106.400%
66) 1,2-Dichlorobenzene-d4	12.187	152	40352	5.251	ug/L	0.00
Spike Amount	5.000	Range	80 - 120	Recovery	=	105.000%
-----						
Target Compounds						Qvalue
13) Acetone	2.621	43	4835	4.622	ug/L	95
21) 2-Butanone	4.795	43	49787	30.204	ug/L #	49
34) Trichloroethene	6.537	95	3134	0.343	ug/L	93
35) Methylcyclohexane	6.682	83	11283	0.806	ug/L #	18
37) 1,2-Dichloropropane	6.682	63	5278	0.590	ug/L #	89
61) 1,2,3-Trichloropropane	11.807	75	6247	1.635	ug/L #	65
-----						

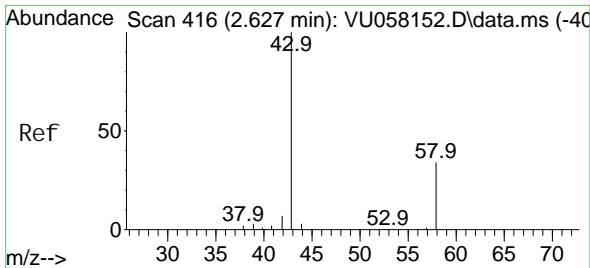
(#) = qualifier out of range (m) = manual integration (+) = signals summed

Data Path : Z:\voasrv\HPCHEM1\MSVOA\_U\Data\VU031924\  
 Data File : VU058159.D  
 Acq On : 19 Mar 2024 16:50  
 Operator : MD/SY  
 Sample : P1796-11  
 Misc : 25.0mL/MSVOA\_U/WATER  
 ALS Vial : 10 Sample Multiplier: 1

Instrument :  
 MSVOA\_U  
 ClientSampleId :

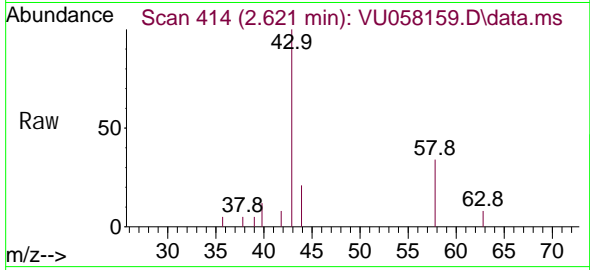
Quant Time: Mar 20 05:21:54 2024  
 Quant Method : Z:\voasrv\HPCHEM1\MSVOA\_U\Method\SFAMUTRO22924WMA.M  
 Quant Title : TRACE VOA SFAM1.0  
 QLast Update : Wed Mar 20 05:19:57 2024  
 Response via : Initial Calibration



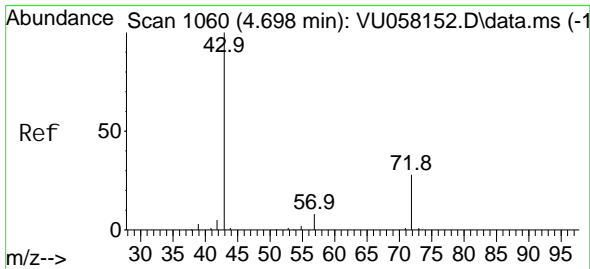
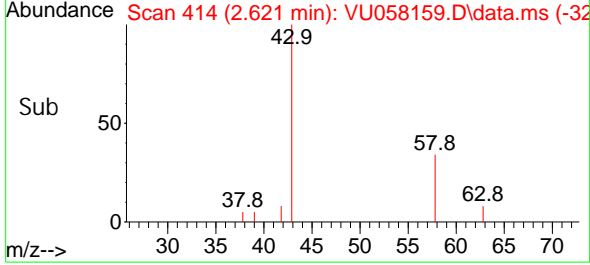
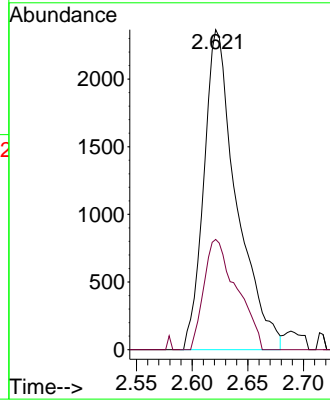


#13  
 Acetone  
 Concen: 4.622 ug/L  
 RT: 2.621 min Scan# 413  
 Delta R.T. -0.006 min  
 Lab File: VU058159.D  
 Acq: 19 Mar 2024 16:50

Instrument : MSVOA\_U  
 ClientSampleId :

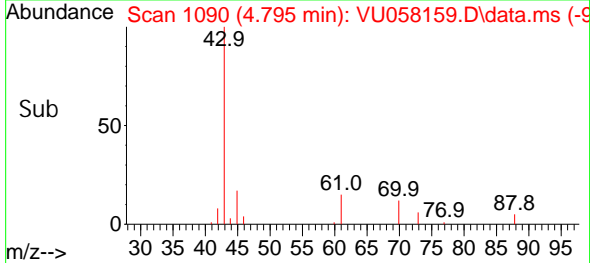
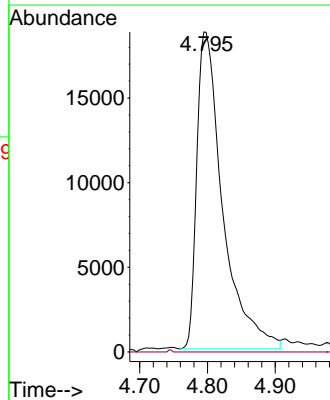
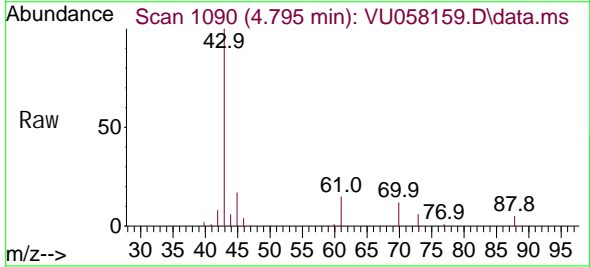


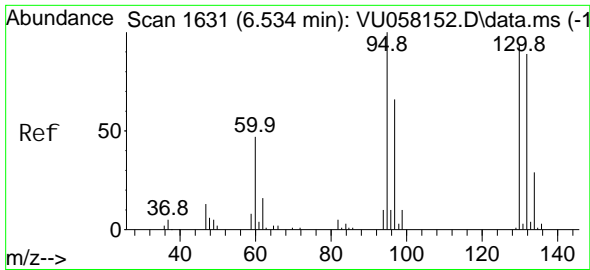
Tgt Ion: 43 Resp: 4835  
 Ion Ratio Lower Upper  
 43 100  
 58 34.6 0.0 63.6



#21  
 2-Butanone  
 Concen: 30.204 ug/L  
 RT: 4.795 min Scan# 1090  
 Delta R.T. 0.097 min  
 Lab File: VU058159.D  
 Acq: 19 Mar 2024 16:50

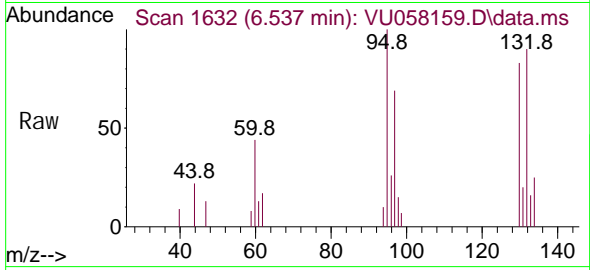
Tgt Ion: 43 Resp: 49787  
 Ion Ratio Lower Upper  
 43 100  
 72 0.1 13.0 39.0#



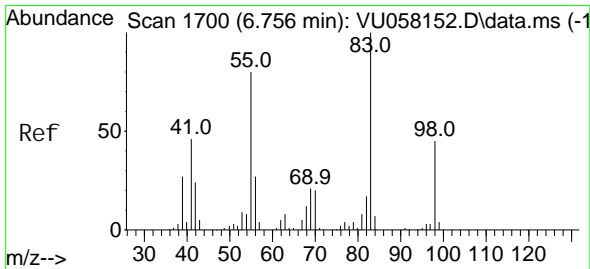
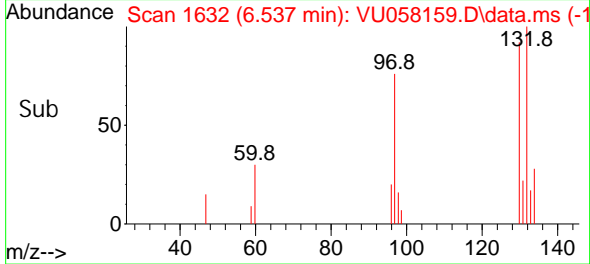
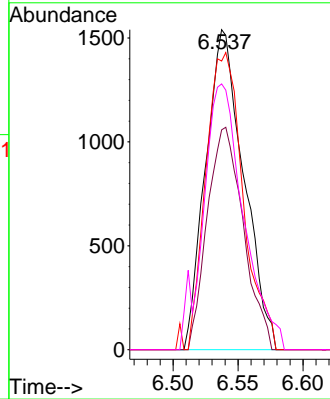


#34  
 Trichloroethene  
 Concen: 0.343 ug/L  
 RT: 6.537 min Scan# 1632  
 Delta R.T. 0.003 min  
 Lab File: VU058159.D  
 Acq: 19 Mar 2024 16:50

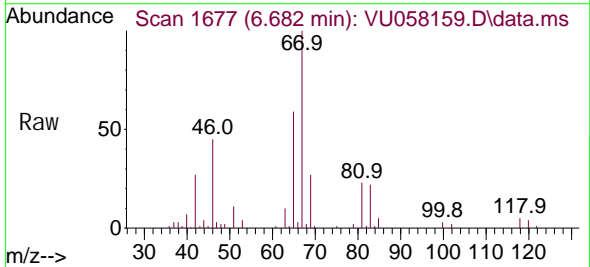
Instrument : MSVOA\_U  
 ClientSampleId :



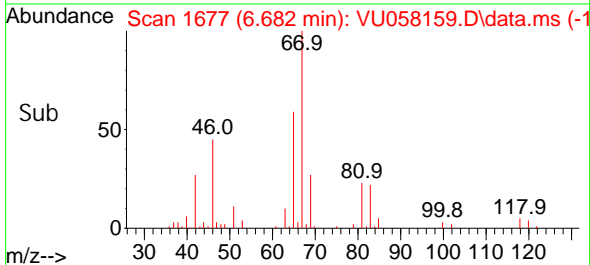
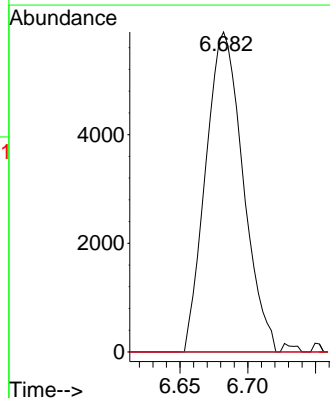
Tgt Ion: 95 Resp: 3134  
 Ion Ratio Lower Upper  
 95 100  
 97 68.7 45.3 84.1  
 132 90.2 63.1 117.1  
 130 83.1 67.6 125.6

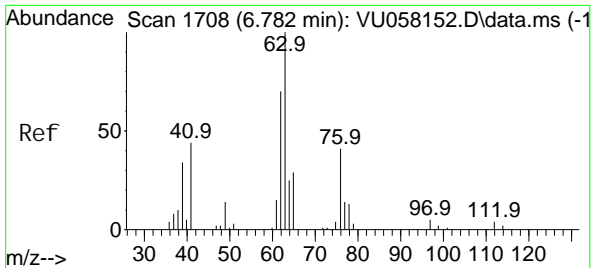


#35  
 Methyl cycl ohexane  
 Concen: 0.806 ug/L  
 RT: 6.682 min Scan# 1677  
 Delta R.T. -0.074 min  
 Lab File: VU058159.D  
 Acq: 19 Mar 2024 16:50



Tgt Ion: 83 Resp: 11283  
 Ion Ratio Lower Upper  
 83 100  
 55 0.0 63.0 94.6#  
 98 0.4 36.2 54.4#

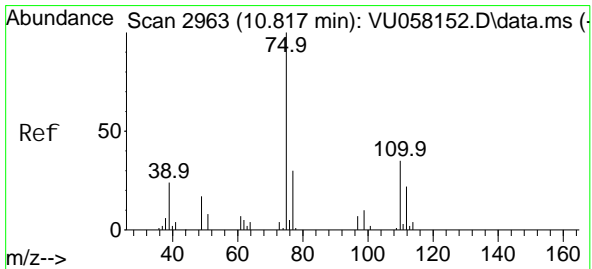
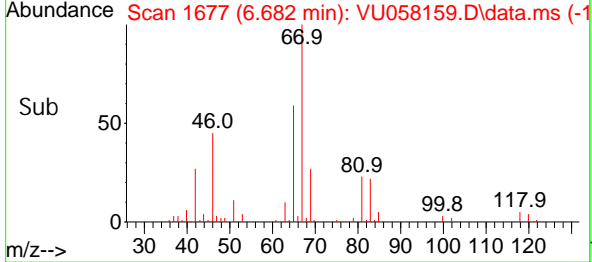
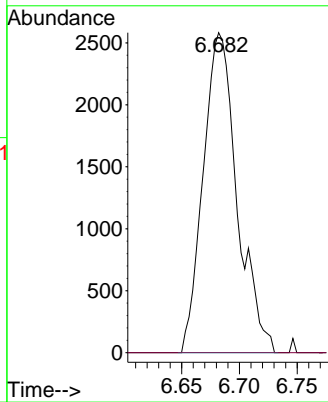
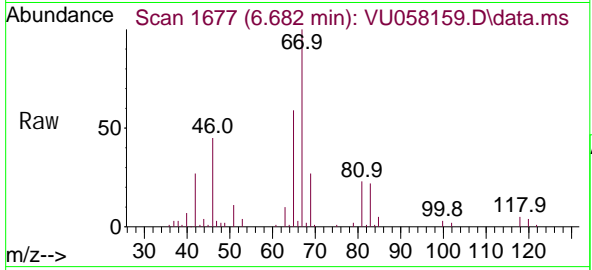




#37  
 1, 2-Di chl oropropane  
 Concen: 0.590 ug/L  
 RT: 6.682 min Scan# 10  
 Delta R.T. -0.100 min  
 Lab File: VU058159.D  
 Acq: 19 Mar 2024 16:50

Instrument : MSVOA\_U  
 ClientSampleId :

Tgt Ion: 63 Resp: 5278  
 Ion Ratio Lower Upper  
 63 100  
 112 0.0 3.0 4.4#



#61  
 1, 2, 3-Tri chl oropropane  
 Concen: 1.635 ug/L  
 RT: 11.807 min Scan# 3271  
 Delta R.T. 0.990 min  
 Lab File: VU058159.D  
 Acq: 19 Mar 2024 16:50

Tgt Ion: 75 Resp: 6247  
 Ion Ratio Lower Upper  
 75 100  
 110 0.0 28.0 42.0#  
 77 34.3 24.7 37.1

