

Data Path : Z:\VOASRV\HPCHEM1\MSVOA U\DATA\VU032219\
 Data File : VU030320.D
 Acq On : 22 Mar 2019 19:51
 Operator : JC/SP
 Sample : K1988-14ME
 Misc : 6.09µ/5mL/100uL/5.0mL/MSVOA_U/MEOH
 ALS Vial : 27 Sample Multiplier: 1

Instrument :
 MSVOA_U
 ClientSampleId :
 BF0C5ME

Quant Time: Mar 23 05:29:23 2019
 Quant Method : Z:\VOASRV\HPCHEM1\MSVOA_U\METHOD\SOMULM031919WMA.M
 Quant Title : VOC Analysis
 QLast Update : Sat Mar 23 04:35:39 2019
 Response via : Initial Calibration

Internal Standards	R.T.	QIon	Response	Conc	Units	Dev(Min)
1) 1,4-Difluorobenzene	5.88	114	541932	50.00	µg/L	0.00
28) Chlorobenzene-d5	9.09	117	548787	50.00	µg/L	0.00
60) 1,4-Dichlorobenzene-d4	11.49	152	280274	50.00	µg/L	0.00

System Monitoring Compounds

4) Vinyl Chloride-d3	1.40	65	128168	34.98	µg/L	0.00
Spiked Amount	50.000	Range	60 - 135	Recovery	=	69.96%
7) Chloroethane-d5	1.64	69	62233	21.24	µg/L	-0.04
Spiked Amount	50.000	Range	70 - 130	Recovery	=	42.48%#
11) 1,1-Dichloroethene-d2	2.23	63	188975	28.27	µg/L	-0.05
Spiked Amount	50.000	Range	60 - 125	Recovery	=	56.54%#
21) 2-Butanone-d5	4.20	46	254150	93.49	µg/L	0.02
Spiked Amount	100.000	Range	40 - 130	Recovery	=	93.49%
24) Chloroform-d	4.64	84	274184	40.77	µg/L	0.00
Spiked Amount	50.000	Range	70 - 125	Recovery	=	81.54%
26) 1,2-Dichloroethane-d4	5.30	65	167862	43.76	µg/L	0.00
Spiked Amount	50.000	Range	70 - 125	Recovery	=	87.52%
32) Benzene-d6	5.33	84	586146	40.53	µg/L	-0.01
Spiked Amount	50.000	Range	70 - 125	Recovery	=	81.06%
36) 1,2-Dichloropropane-d6	6.32	67	189374	42.32	µg/L	0.00
Spiked Amount	50.000	Range	70 - 120	Recovery	=	84.64%
41) Toluene-d8	7.56	98	525104	38.62	µg/L	0.00
Spiked Amount	50.000	Range	80 - 120	Recovery	=	77.24%#
43) trans-1,3-Dichloropropene-	7.85	79	84848	38.94	µg/L	0.00
Spiked Amount	50.000	Range	60 - 125	Recovery	=	77.88%
47) 2-Hexanone-d5	8.32	63	224910	96.93	µg/L	0.02
Spiked Amount	100.000	Range	45 - 130	Recovery	=	96.93%
57) 1,1,2,2-Tetrachloroethane-	10.43	84	328685	47.89	µg/L	0.00
Spiked Amount	50.000	Range	65 - 120	Recovery	=	95.78%
64) 1,2-Dichlorobenzene-d4	11.86	152	245656	43.66	µg/L	0.00
Spiked Amount	50.000	Range	80 - 120	Recovery	=	87.32%

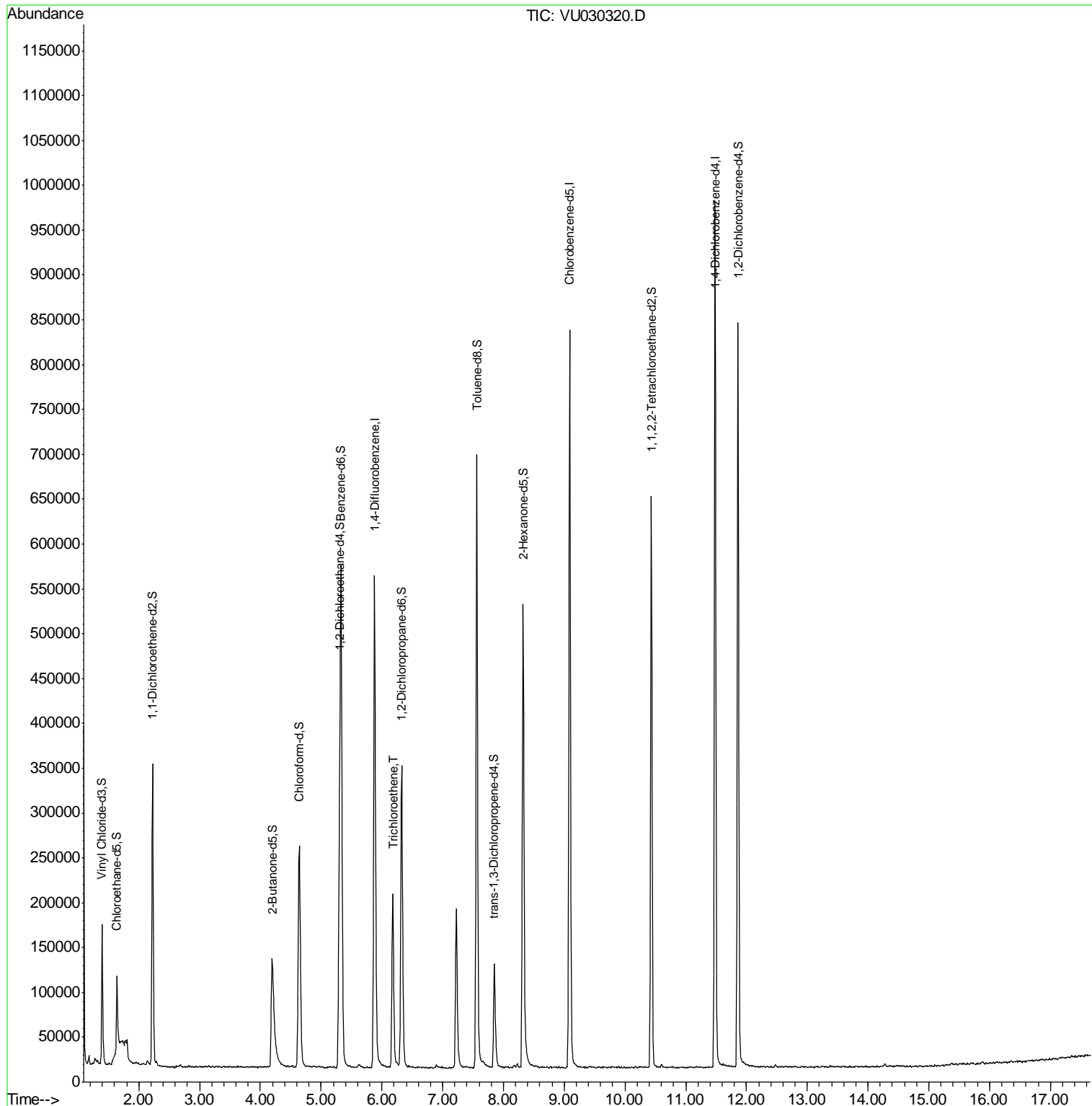
Target Compounds	R.T.	QIon	Response	Conc	Units	Ovalue
34) Trichloroethene	6.18	95	72465	17.364	µg/L	99

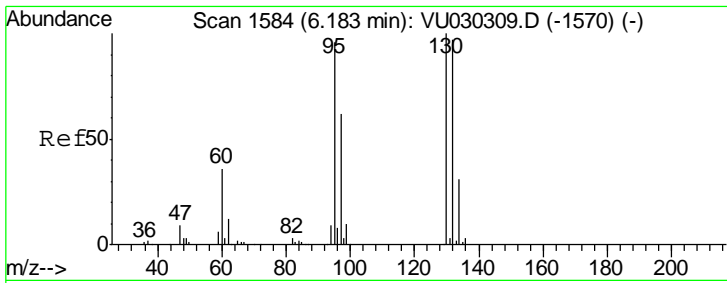
(#) = qualifier out of range (m) = manual integration (+) = signals summed

Data Path : Z:\VOASRV\HPCHEM1\MSVOA U\DATA\VU032219\
 Data File : VU030320.D
 Acq On : 22 Mar 2019 19:51
 Operator : JC/SP
 Sample : K1988-14ME
 Misc : 6.09µ/5mL/100uL/5.0mL/MSVOA_U/MEOH
 ALS Vial : 27 Sample Multiplier: 1

Instrument :
 MSVOA_U
 ClientSampled :
 BF0C5ME

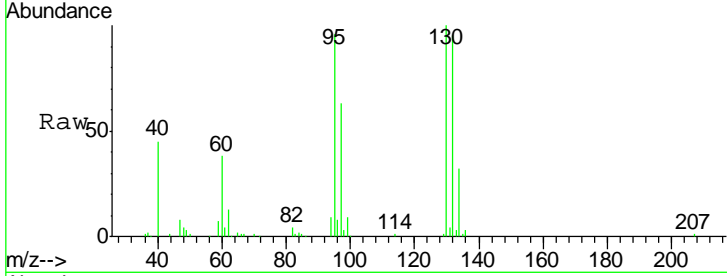
Quant Time: Mar 23 05:29:23 2019
 Quant Method : Z:\VOASRV\HPCHEM1\MSVOA_U\METHOD\SOMULM031919WMA.M
 Quant Title : VOC Analysis
 QLast Update : Sat Mar 23 04:35:39 2019
 Response via : Initial Calibration





#34
 Trichloroethene
 Concen: 17.364 ug/L
 RT: 6.18 min Scan# 1582
 Delta R.T. -0.01 min
 Lab File: VU030320.D
 Acq: 22 Mar 2019 19:51

Instrument :
 MSVOA_U
 ClientSampled :
 BF0C5ME



Tot Ion: 95 Resp: 72465

Ion	Ratio	Lower	Upper
95	100		
97	65.4	46.2	85.8
132	99.1	69.3	128.7
130	103.8	73.6	136.6

