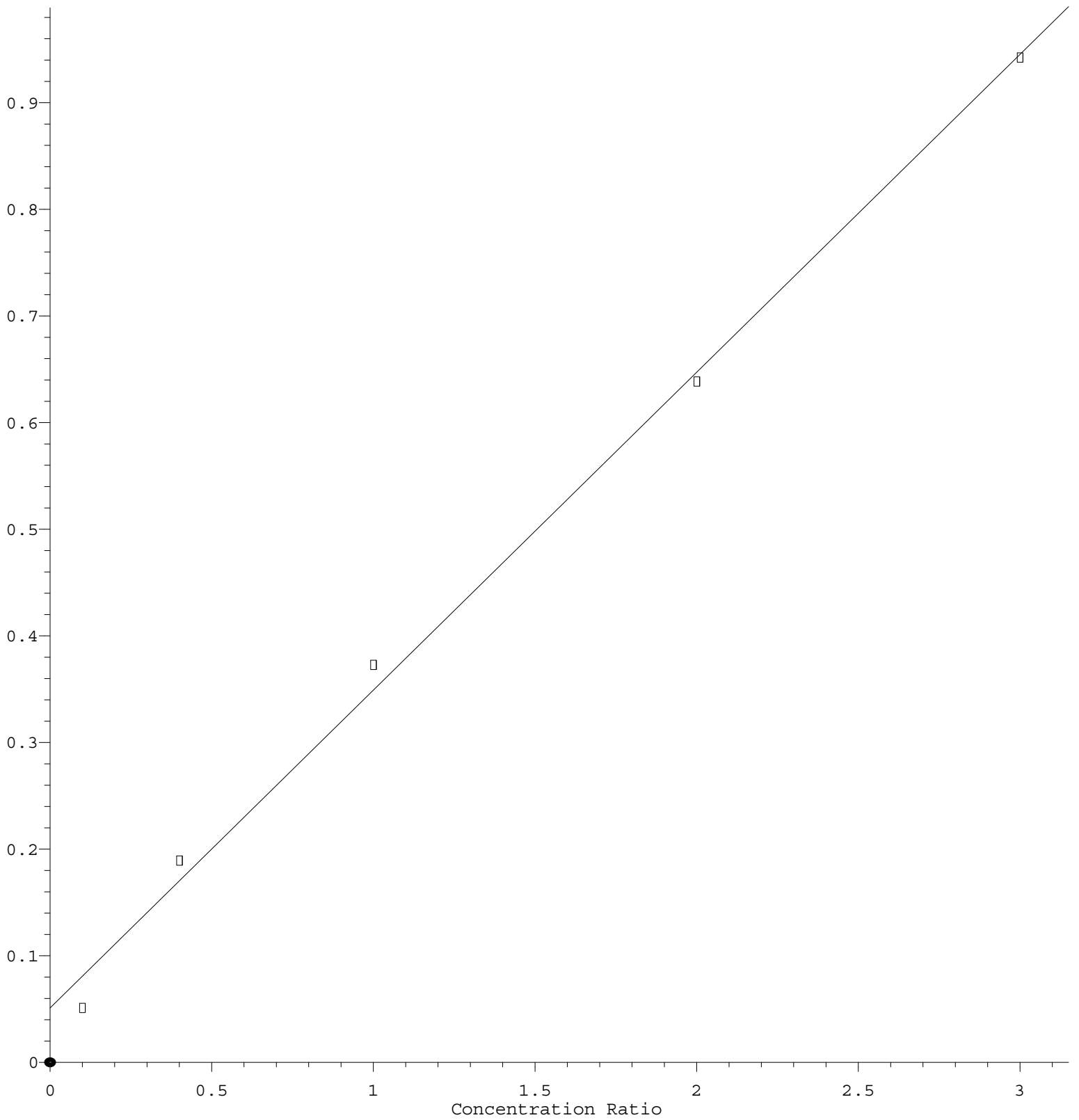


Bromomethane

Response Ratio



Response = 2.982e-001 \* Amt + 5.116e-002

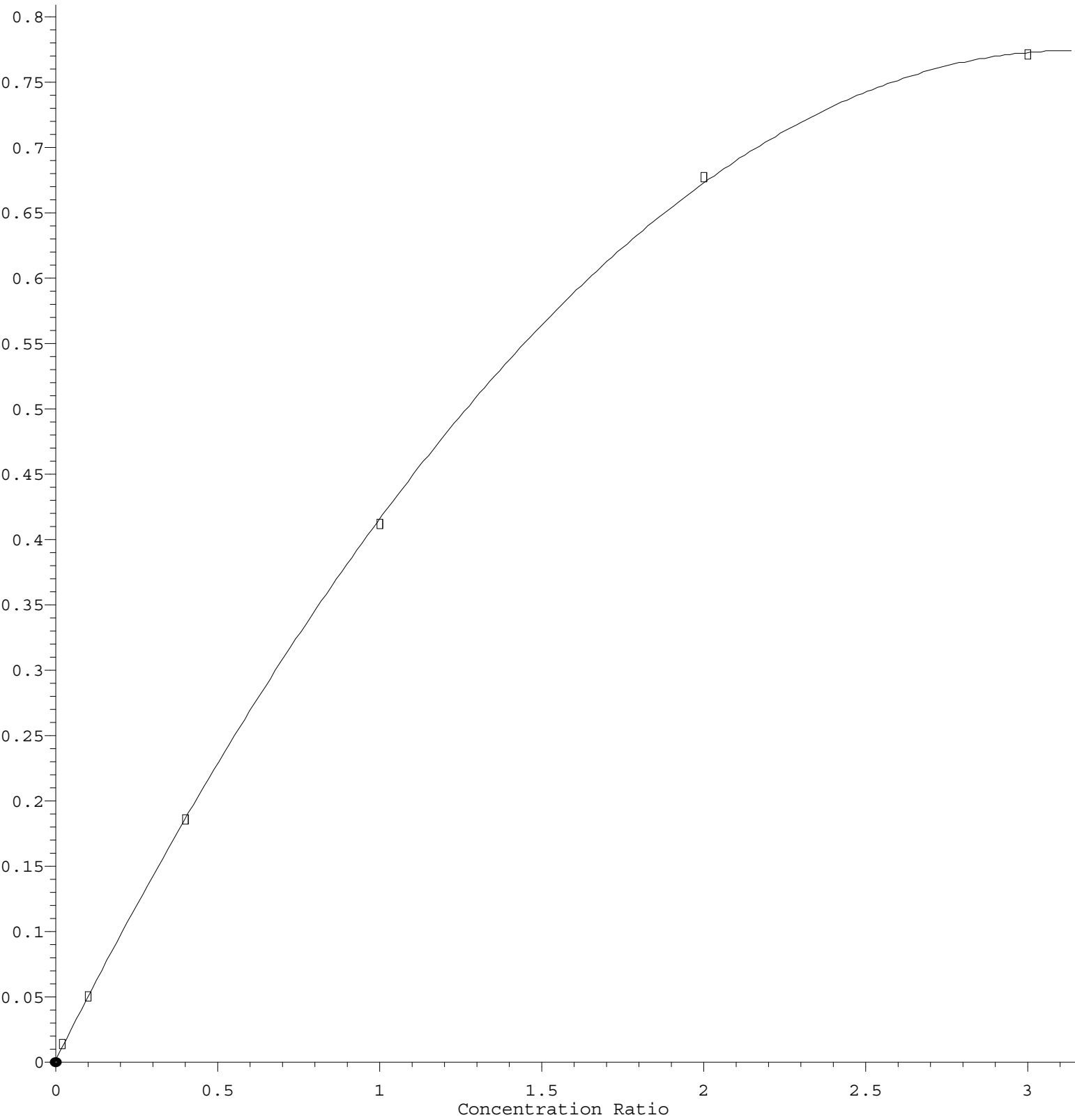
Coef of Det (r^2) = 0.996304 Curve Fit: Linear

Method Name: Z:\voasrv\HPCHEM1\MSVOA U\Method\82U032421W.M

Calibration Table Last Updated: Thu Mar 25 05:42:00 2021

# Chloroethane

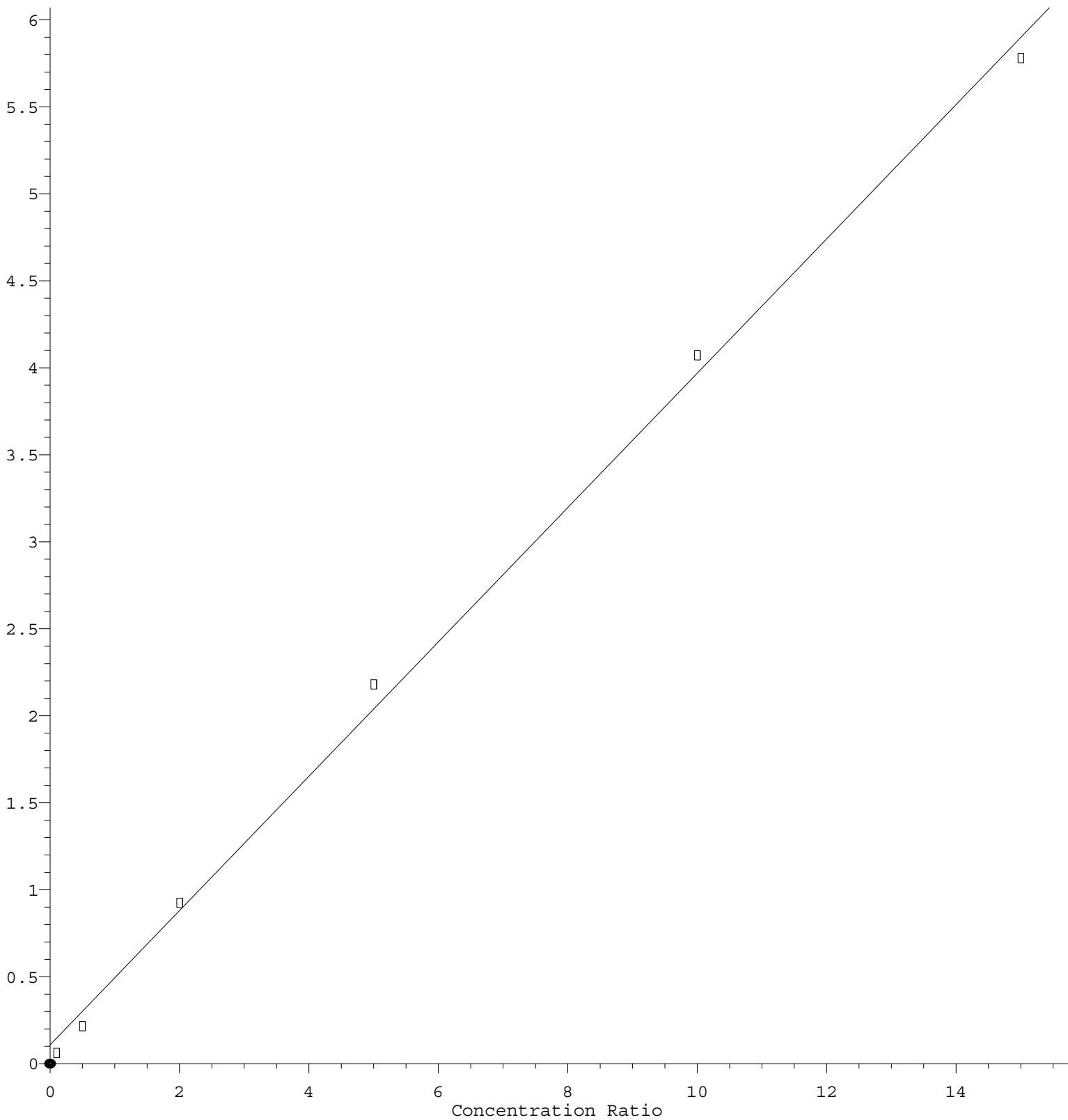
Response Ratio



$R = -7.853e-002 A^2 + 4.925e-001 A + 2.057e-003$   
Coef of Det ( $r^2$ ) = 0.999916    Curve Fit: Quadratic  
Method Name: Z:\voasrv\HPCHEM1\MSVOA U\Method\82U032421W.M  
Calibration Table Last Updated: Thu Mar 25 05:42:00 2021

Acetone

Response Ratio



Response = 3.860e-001 \* Amt + 1.082e-001

Coef of Det (r^2) = 0.997683 Curve Fit: Linear

Method Name: Z:\voasrv\HPCHEM1\MSVOA U\Method\82U032421W.M

Calibration Table Last Updated: Thu Mar 25 05:42:00 2021