

Data Path : Z:\voasrv\HPCHEM1\MSVOA_U\Data\VU032422\
 Data File : VU047643.D
 Acq On : 24 Mar 2022 19:38
 Operator : SY/MD
 Sample : N2081-02
 Misc : 5.0mL/MSVOA_U/WATER
 ALS Vial : 14 Sample Multiplier: 1

Instrument :
 MSVOA_U
 ClientSampleId :
 EW5X1

Quant Time: Mar 24 23:48:56 2022
 Quant Method : Z:\voasrv\HPCHEM1\MSVOA_U\Method\SFAMULM032422WMA.M
 Quant Title : VOC Analysis
 QLast Update : Thu Mar 24 23:34:42 2022
 Response via : Initial Calibration

Compound	R.T.	QIon	Response	Conc	Units	Dev(Min)
Internal Standards						
1) 1,4-Difluorobenzene	6.253	114	65009	50.000	ug/L	0.00
28) Chlorobenzene-d5	9.417	117	69048	50.000	ug/L	0.00
58) 1,4-Dichlorobenzene-d4	11.812	152	44636	50.000	ug/L	0.00
System Monitoring Compounds						
4) Vinyl Chloride-d3	1.601	65	24285	51.514	ug/L	0.00
Spiked Amount	50.000	Range 60 - 135	Recovery	=	103.020%	
7) Chloroethane-d5	1.919	69	18103	48.701	ug/L	0.00
Spiked Amount	50.000	Range 70 - 130	Recovery	=	97.400%	
11) 1,1-Dichloroethene-d2	2.578	63	46846	54.314	ug/L	0.00
Spiked Amount	50.000	Range 60 - 125	Recovery	=	108.620%	
21) 2-Butanone-d5	4.646	46	44012	108.770	ug/L	0.00
Spiked Amount	100.000	Range 40 - 130	Recovery	=	108.770%	
24) Chloroform-d	5.067	84	42748	49.558	ug/L	0.00
Spiked Amount	50.000	Range 70 - 125	Recovery	=	99.120%	
26) 1,2-Dichloroethane-d4	5.707	65	28168	53.244	ug/L	0.00
Spiked Amount	50.000	Range 70 - 125	Recovery	=	106.480%	
32) Benzene-d6	5.729	84	86219	49.624	ug/L	0.00
Spiked Amount	50.000	Range 70 - 125	Recovery	=	99.240%	
36) 1,2-Dichloropropane-d6	6.694	67	26555	49.767	ug/L	0.00
Spiked Amount	50.000	Range 70 - 120	Recovery	=	99.540%	
41) Toluene-d8	7.899	98	76149	44.985	ug/L	0.00
Spiked Amount	50.000	Range 80 - 120	Recovery	=	89.960%	
43) trans-1,3-Dichloroprop...	8.182	79	12658	46.825	ug/L	0.00
Spiked Amount	50.000	Range 60 - 125	Recovery	=	93.660%	
47) 2-Hexanone-d5	8.639	63	27802	89.006	ug/L	0.00
Spiked Amount	100.000	Range 45 - 130	Recovery	=	89.010%	
56) 1,1,2,2-Tetrachloroeth...	10.758	84	44241	48.313	ug/L	0.00
Spiked Amount	50.000	Range 65 - 120	Recovery	=	96.620%	
66) 1,2-Dichlorobenzene-d4	12.195	152	38884	48.965	ug/L	0.00
Spiked Amount	50.000	Range 80 - 120	Recovery	=	97.940%	
Target Compounds						
2) Dichlorodifluoromethane	1.388	85	503	0.835	ug/L	93
5) Vinyl chloride	1.607	62	85754	145.880	ug/L	97
8) Chloroethane	1.938	64	649195	1759.230	ug/L	100
9) Trichlorofluoromethane	2.144	101	4651	5.611	ug/L	100
10) 1,1,2-Trichloro-1,2,2-...	2.585	101	335	0.699	ug/L #	18
12) 1,1-Dichloroethene	2.585	96	29849	66.936	ug/L	90
13) Acetone	2.665	43	1184	3.144	ug/L	73
14) Carbon disulfide	2.803	76	1305	0.926	ug/L #	75
17) trans-1,2-Dichloroethene	3.359	96	13097	27.230	ug/L	98
18) Methyl tert-butyl Ether	3.369	73	1082	0.797	ug/L #	81
19) 1,1-Dichloroethane	3.874	63	1390639	1676.418	ug/L	99
20) cis-1,2-Dichloroethene	4.671	96	1137305	2156.817	ug/L	97
27) 1,2-Dichloroethane	5.803	62	4836	7.009	ug/L	99
29) Cyclohexane	5.395	56	540	0.771	ug/L #	76
30) 1,1,1-Trichloroethane	5.321	97	3009980	3844.493	ug/L	100
33) Benzene	5.781	78	9977	4.992	ug/L	100
34) Trichloroethene	6.543	95	19868	37.918	ug/L	94
35) Methylcyclohexane	6.764	83	3083	3.868	ug/L	92
37) 1,2-Dichloropropane	6.690	63	3048	5.999	ug/L #	87

Data Path : Z:\voasrv\HPCHEM1\MSVOA_U\Data\VU032422\
 Data File : VU047643.D
 Acq On : 24 Mar 2022 19:38
 Operator : SY/MD
 Sample : N2081-02
 Misc : 5.0mL/MSVOA_U/WATER
 ALS Vial : 14 Sample Multiplier: 1

Instrument :
 MSVOA_U
 ClientSampleId :
 EW5X1

Quant Time: Mar 24 23:48:56 2022
 Quant Method : Z:\voasrv\HPCHEM1\MSVOA_U\Method\SFAMULM032422WMA.M
 Quant Title : VOC Analysis
 QLast Update : Thu Mar 24 23:34:42 2022
 Response via : Initial Calibration

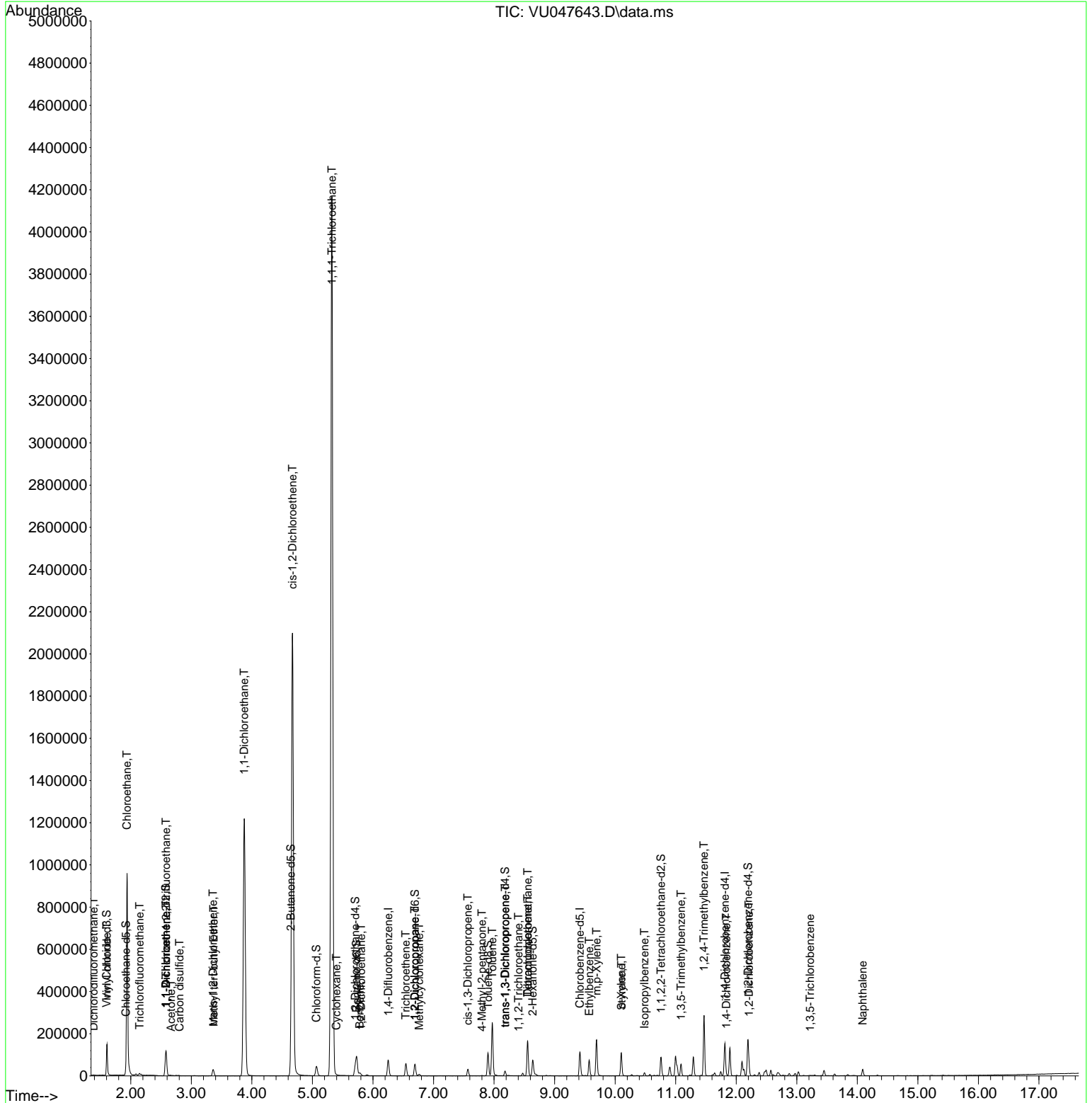
Compound	R.T.	QIon	Response	Conc	Units	Dev(Min)
39) cis-1,3-Dichloropropene	7.565	75	503	0.638	ug/L #	55
40) 4-Methyl-2-pentanone	7.800	43	1466	1.826	ug/L #	76
42) Toluene	7.970	91	191271	87.221	ug/L	99
44) trans-1,3-Dichloropropene	8.186	75	640	0.813	ug/L #	77
45) 1,1,2-Trichloroethane	8.404	97	257	0.477	ug/L #	62
46) Tetrachloroethene	8.555	164	38942	82.703	ug/L	100
49) Dibromochloromethane	8.555	129	34543	55.347	ug/L #	11
52) Ethylbenzene	9.571	91	52945	22.962	ug/L	100
53) m,p-Xylene	9.694	106	50012	55.277	ug/L	96
54) o-Xylene	10.102	106	29984	33.766	ug/L	97
55) Styrene	10.105	104	2297	1.515	ug/L #	1
61) Isopropylbenzene	10.485	105	9703	4.022	ug/L	98
62) 1,3,5-Trimethylbenzene	11.089	105	30742	23.487	ug/L	99
63) 1,2,4-Trimethylbenzene	11.468	105	153517	77.216	ug/L	100
65) 1,4-Dichlorobenzene	11.838	146	1382	0.995	ug/L	96
67) 1,2-Dichlorobenzene	12.211	146	9157	6.825	ug/L	98
69) 1,3,5-Trichlorobenzene	13.221	180	877	0.805	ug/L #	81
71) Naphthalene	14.089	128	26160	9.199	ug/L	97

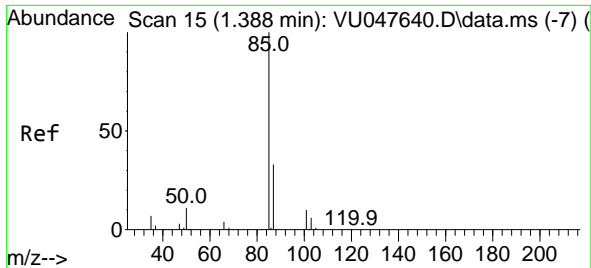
(#) = qualifier out of range (m) = manual integration (+) = signals summed

Data Path : Z:\voasrv\HPCHEM1\MSVOA_U\Data\VU032422\
 Data File : VU047643.D
 Acq On : 24 Mar 2022 19:38
 Operator : SY/MD
 Sample : N2081-02
 Misc : 5.0mL/MSVOA_U/WATER
 ALS Vial : 14 Sample Multiplier: 1

Instrument :
 MSVOA_U
 ClientSampleId :
 EW5X1

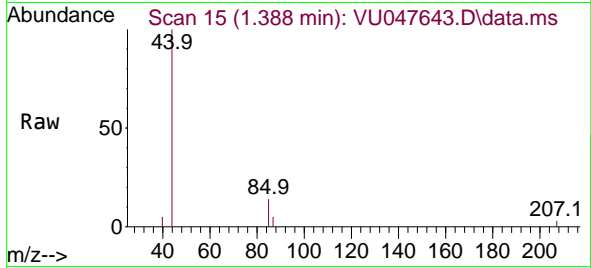
Quant Time: Mar 24 23:48:56 2022
 Quant Method : Z:\voasrv\HPCHEM1\MSVOA_U\Method\SFAMULM032422WMA.M
 Quant Title : VOC Analysis
 QLast Update : Thu Mar 24 23:34:42 2022
 Response via : Initial Calibration



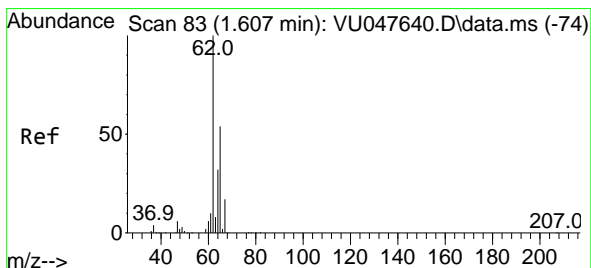
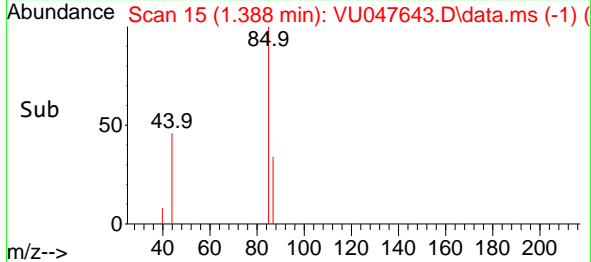
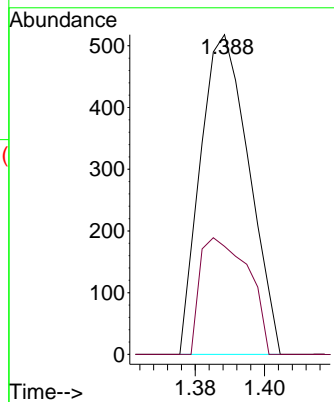


#2
 Dichlorodifluoromethane
 Concen: 0.835 ug/L
 RT: 1.388 min Scan# 15
 Delta R.T. 0.000 min
 Lab File: VU047643.D
 Acq: 24 Mar 2022 19:38

Instrument :
 MSVOA_U
 ClientSampleId :
 EW5X1

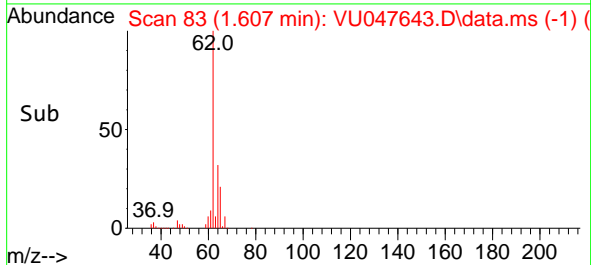
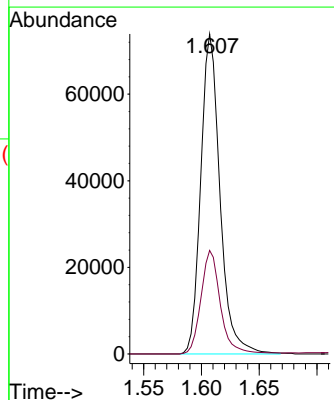
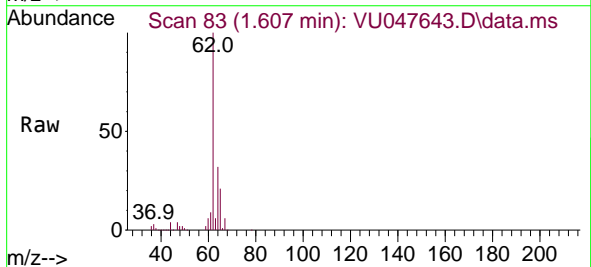


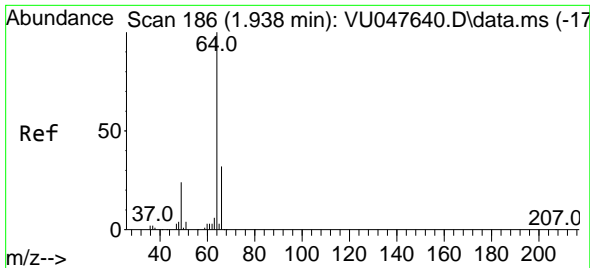
Tgt Ion: 85 Resp: 503
 Ion Ratio Lower Upper
 85 100
 87 36.4 25.8 38.8



#5
 Vinyl chloride
 Concen: 145.880 ug/L
 RT: 1.607 min Scan# 83
 Delta R.T. 0.000 min
 Lab File: VU047643.D
 Acq: 24 Mar 2022 19:38

Tgt Ion: 62 Resp: 85754
 Ion Ratio Lower Upper
 62 100
 64 32.4 23.7 43.9

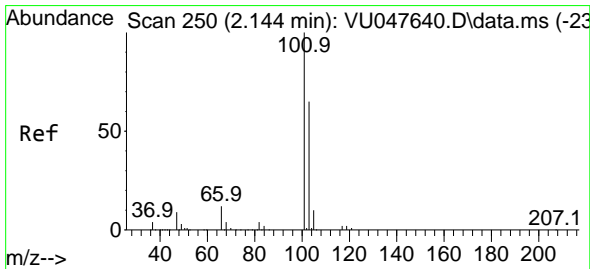
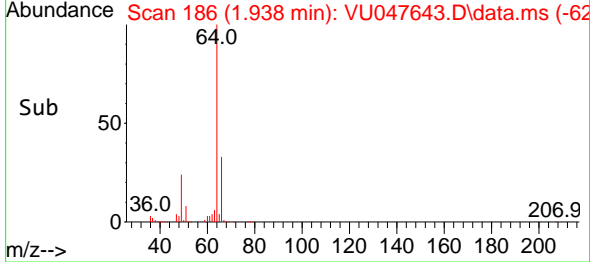
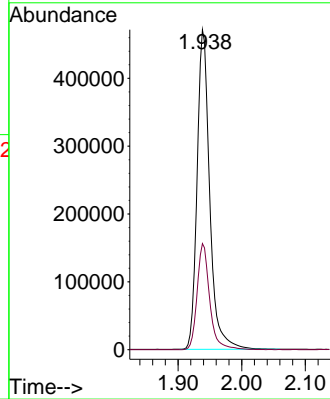
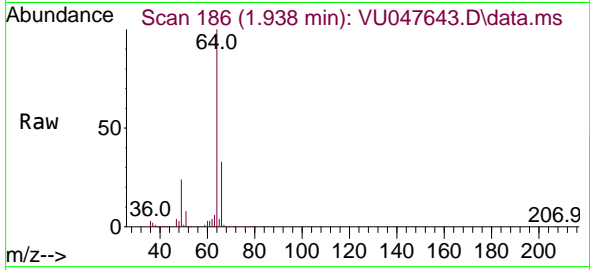




#8
 Chloroethane
 Concen: 1759.230 ug/L
 RT: 1.938 min Scan# 11
 Delta R.T. 0.000 min
 Lab File: VU047643.D
 Acq: 24 Mar 2022 19:38

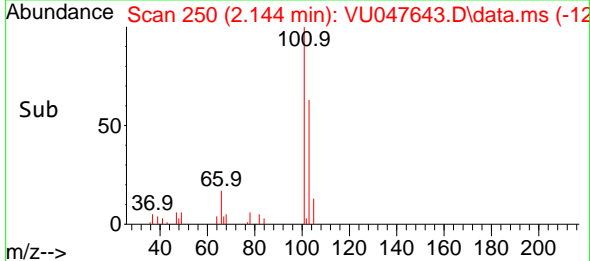
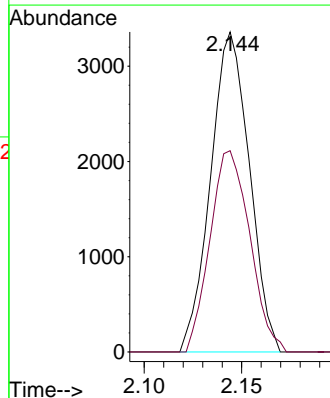
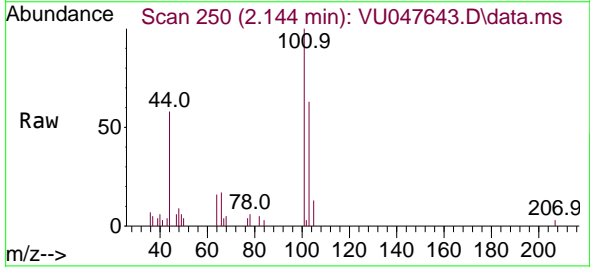
Instrument :
 MSVOA_U
 ClientSampleId :
 EW5X1

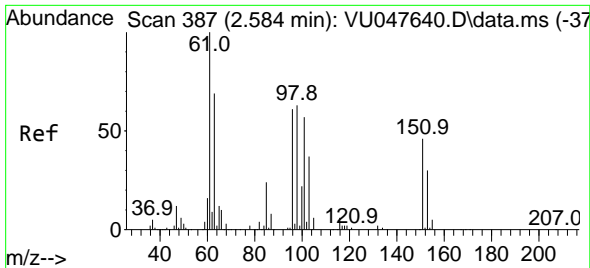
Tgt Ion: 64 Resp: 649195
 Ion Ratio Lower Upper
 64 100
 66 33.2 23.3 43.3



#9
 Trichlorofluoromethane
 Concen: 5.611 ug/L
 RT: 2.144 min Scan# 250
 Delta R.T. 0.000 min
 Lab File: VU047643.D
 Acq: 24 Mar 2022 19:38

Tgt Ion: 101 Resp: 4651
 Ion Ratio Lower Upper
 101 100
 103 64.5 51.4 77.2

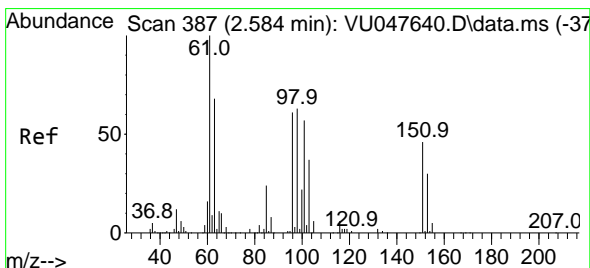
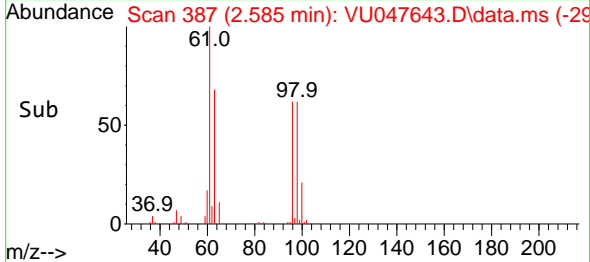
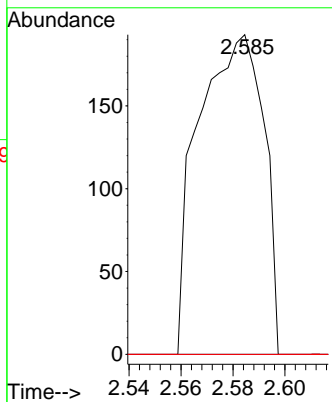
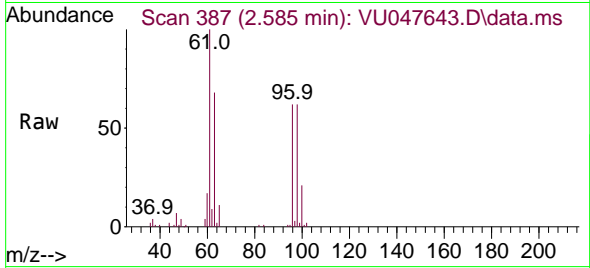




#10
 1,1,2-Trichloro-1,2,2-trifluoroethane
 Concen: 0.699 ug/L
 RT: 2.585 min Scan# 387
 Delta R.T. 0.000 min
 Lab File: VU047643.D
 Acq: 24 Mar 2022 19:38

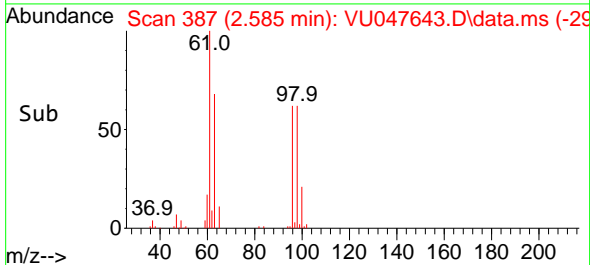
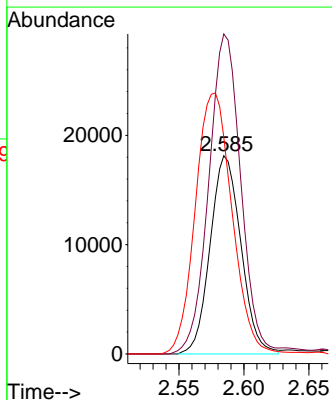
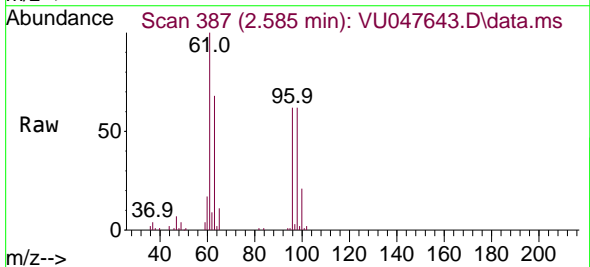
Instrument : MSVOA_U
 ClientSampleId : EW5X1

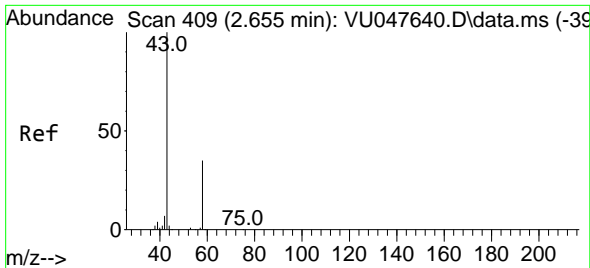
Tgt Ion	Resp	Lower	Upper
101	100		
85	0.0	32.8	49.2#
151	0.0	63.0	94.6#



#12
 1,1-Dichloroethene
 Concen: 66.936 ug/L
 RT: 2.585 min Scan# 387
 Delta R.T. 0.000 min
 Lab File: VU047643.D
 Acq: 24 Mar 2022 19:38

Tgt Ion	Resp	Lower	Upper
96	100		
61	161.5	113.1	210.1
63	109.4	94.8	176.0

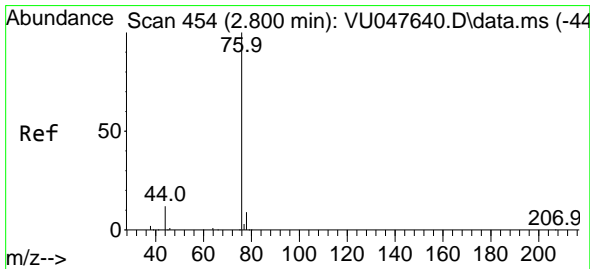
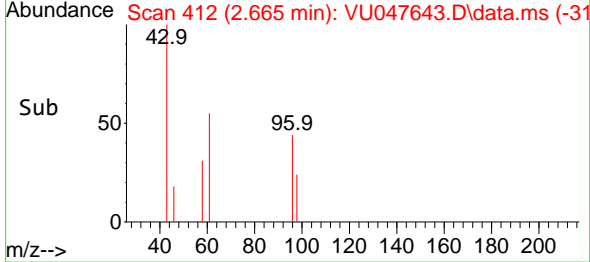
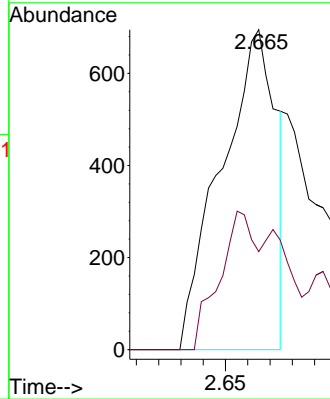
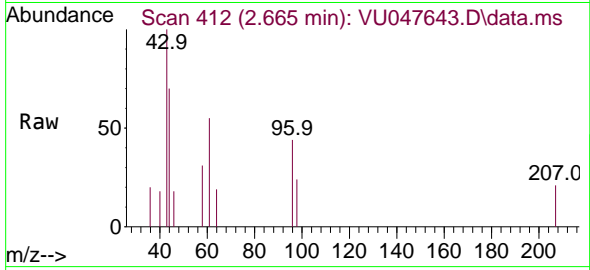




#13
 Acetone
 Concen: 3.144 ug/L
 RT: 2.665 min Scan# 411
 Delta R.T. 0.010 min
 Lab File: VU047643.D
 Acq: 24 Mar 2022 19:38

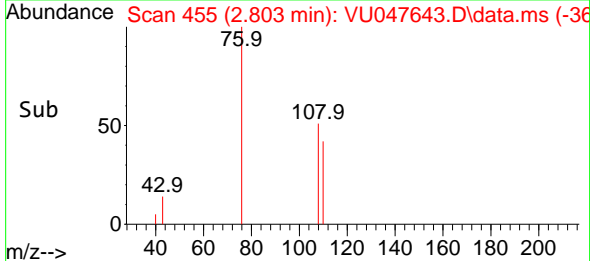
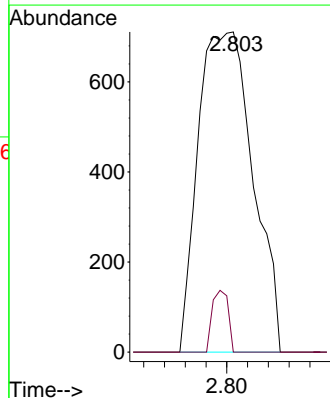
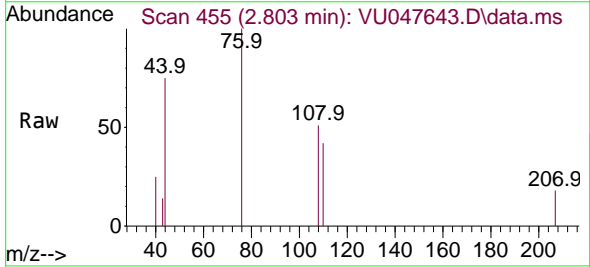
Instrument : MSVOA_U
 ClientSampleId : EW5X1

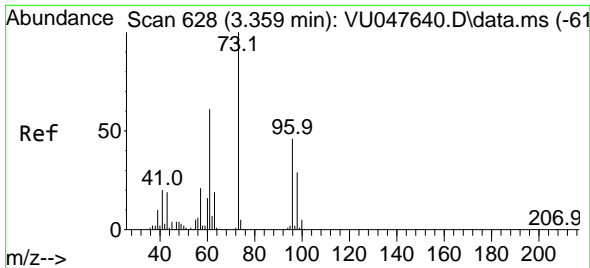
Tgt Ion: 43 Resp: 1184
 Ion Ratio Lower Upper
 43 100
 58 19.3 0.0 70.0



#14
 Carbon disulfide
 Concen: 0.926 ug/L
 RT: 2.803 min Scan# 455
 Delta R.T. 0.003 min
 Lab File: VU047643.D
 Acq: 24 Mar 2022 19:38

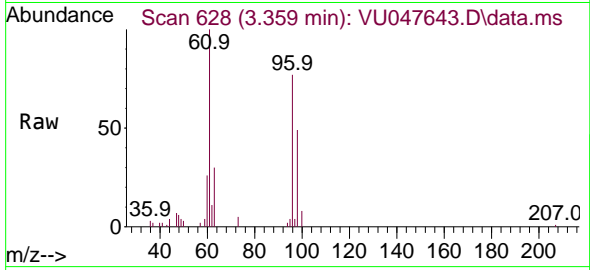
Tgt Ion: 76 Resp: 1305
 Ion Ratio Lower Upper
 76 100
 78 0.0 7.4 11.0#





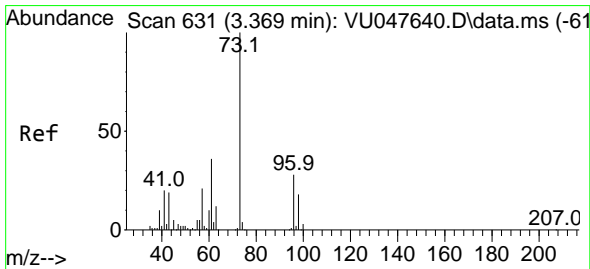
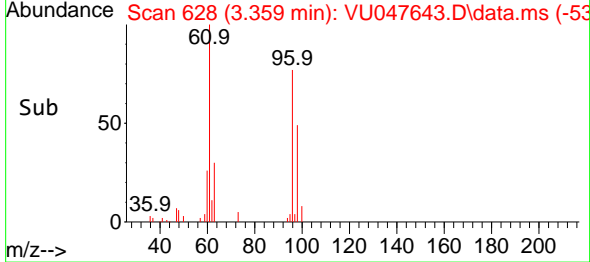
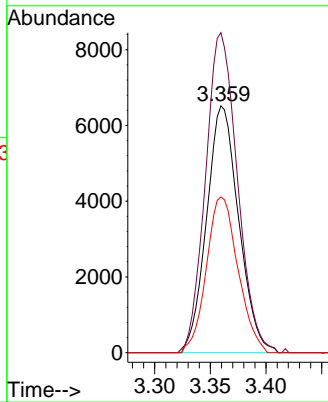
#17
 trans-1,2-Dichloroethene
 Concen: 27.230 ug/L
 RT: 3.359 min Scan# 61
 Delta R.T. 0.000 min
 Lab File: VU047643.D
 Acq: 24 Mar 2022 19:38

Instrument : MSVOA_U
 ClientSampleId : EW5X1



Tgt Ion: 96 Resp: 13097

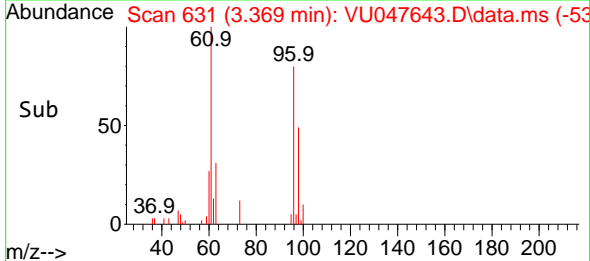
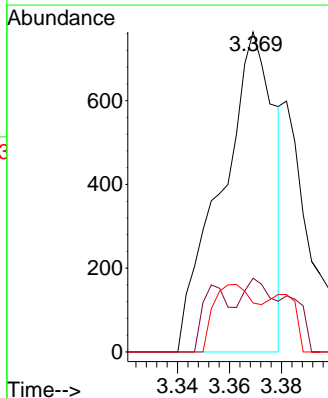
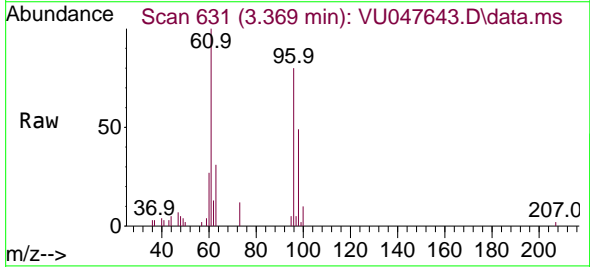
Ion	Ratio	Lower	Upper
96	100		
61	129.7	88.4	164.2
98	63.1	43.3	80.5

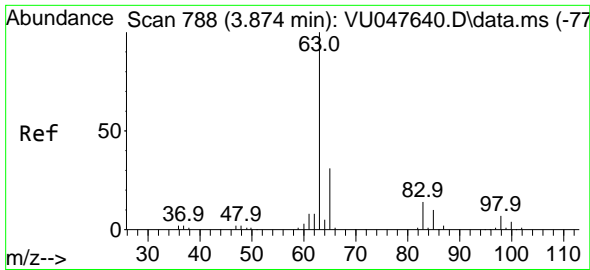


#18
 Methyl tert-butyl Ether
 Concen: 0.797 ug/L
 RT: 3.369 min Scan# 631
 Delta R.T. 0.000 min
 Lab File: VU047643.D
 Acq: 24 Mar 2022 19:38

Tgt Ion: 73 Resp: 1082

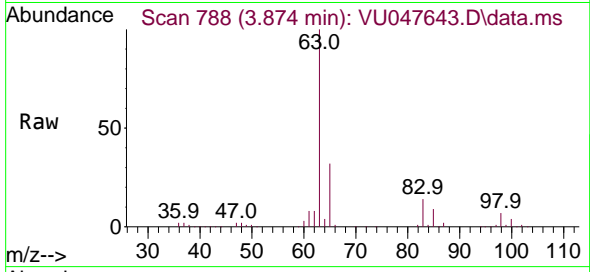
Ion	Ratio	Lower	Upper
73	100		
43	5.6	15.3	22.9#
57	16.8	17.0	25.6#



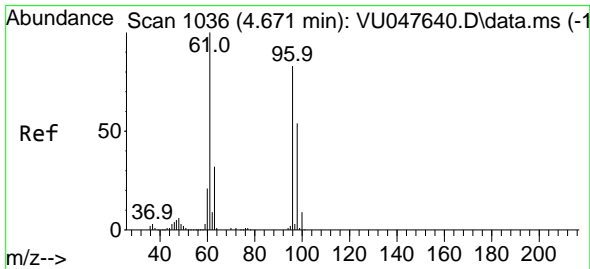
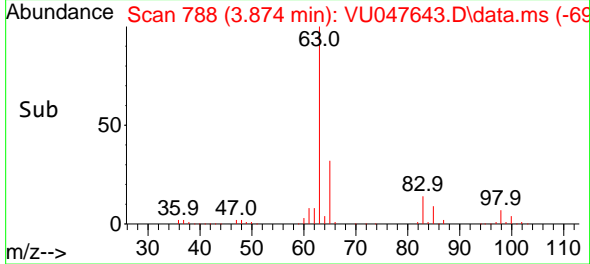
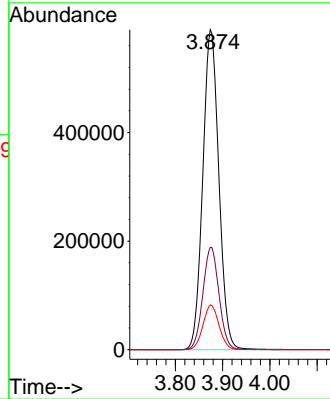


#19
 1,1-Dichloroethane
 Concen: 1676.418 ug/L
 RT: 3.874 min Scan# 788
 Delta R.T. 0.000 min
 Lab File: VU047643.D
 Acq: 24 Mar 2022 19:38

Instrument : MSVOA_U
 ClientSampleId : EW5X1

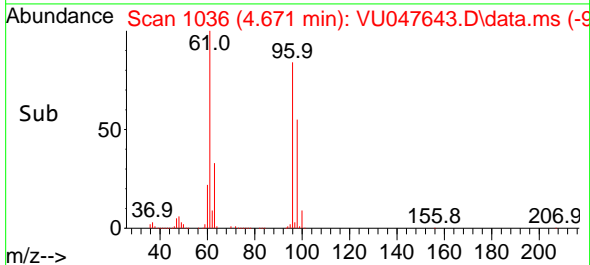
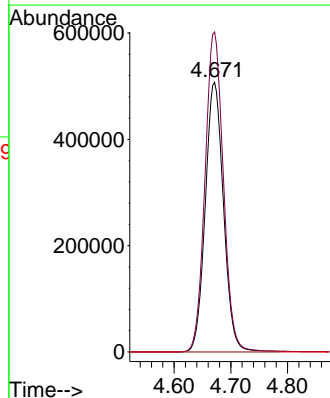
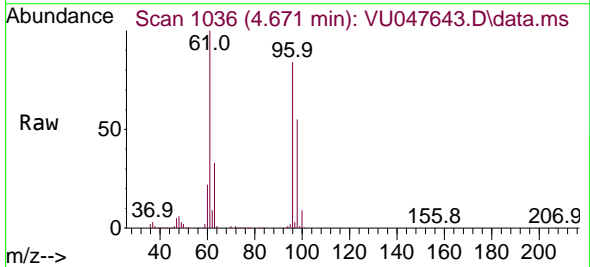


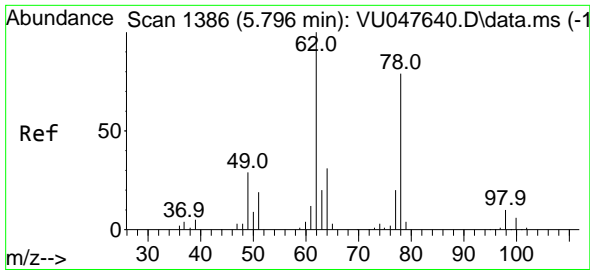
Tgt Ion: 63 Resp: 1390639
 Ion Ratio Lower Upper
 63 100
 65 32.0 22.0 41.0
 83 14.0 9.7 18.1



#20
 cis-1,2-Dichloroethene
 Concen: 2156.817 ug/L
 RT: 4.671 min Scan# 1036
 Delta R.T. 0.000 min
 Lab File: VU047643.D
 Acq: 24 Mar 2022 19:38

Tgt Ion: 96 Resp: 1137305
 Ion Ratio Lower Upper
 96 100
 61 118.7 80.7 149.9
 68 0.0 0.0 0.0

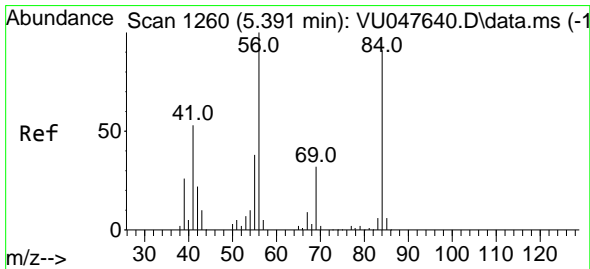
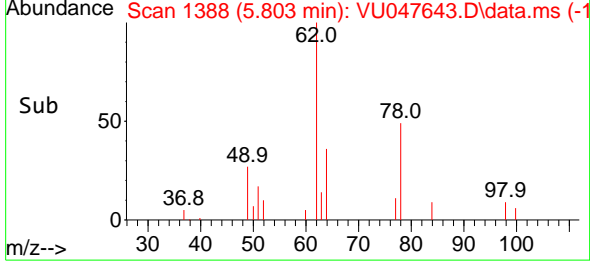
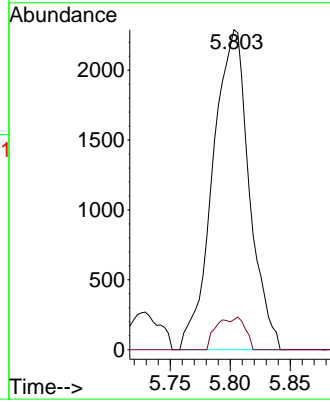
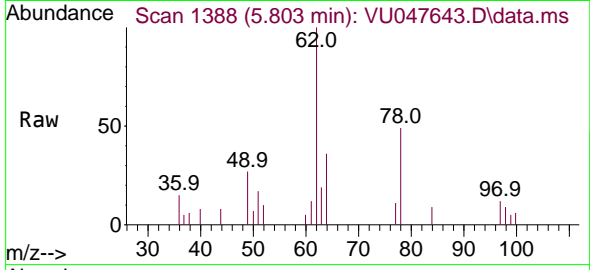




#27
 1,2-Dichloroethane
 Concen: 7.009 ug/L
 RT: 5.803 min Scan# 11
 Delta R.T. 0.007 min
 Lab File: VU047643.D
 Acq: 24 Mar 2022 19:38

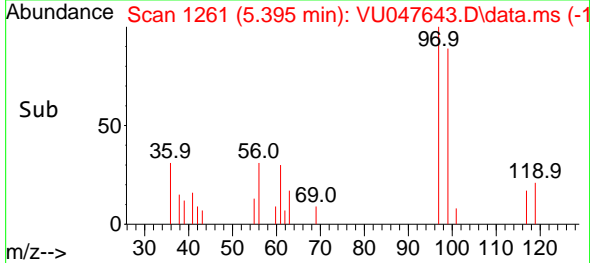
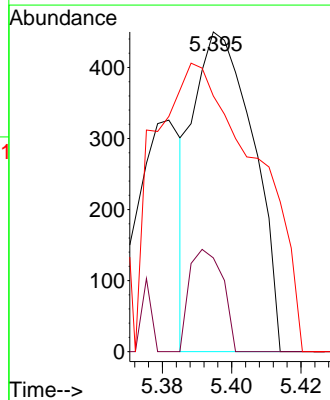
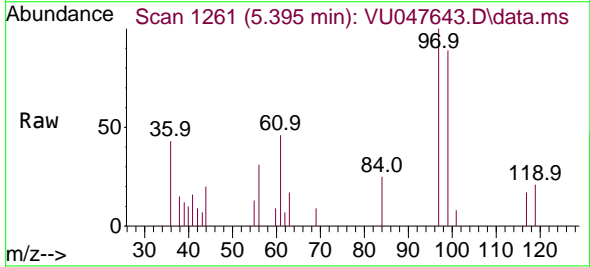
Instrument : MSVOA_U
 ClientSampleId : EW5X1

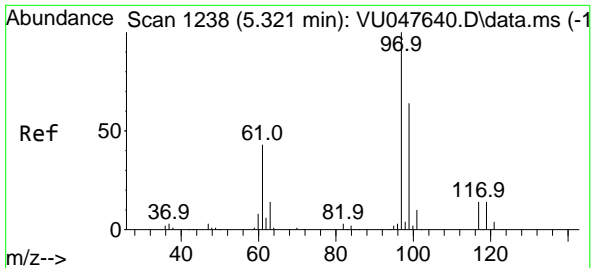
Tgt Ion: 62 Resp: 4836
 Ion Ratio Lower Upper
 62 100
 98 9.4 7.4 11.0



#29
 Cyclohexane
 Concen: 0.771 ug/L
 RT: 5.395 min Scan# 1261
 Delta R.T. 0.003 min
 Lab File: VU047643.D
 Acq: 24 Mar 2022 19:38

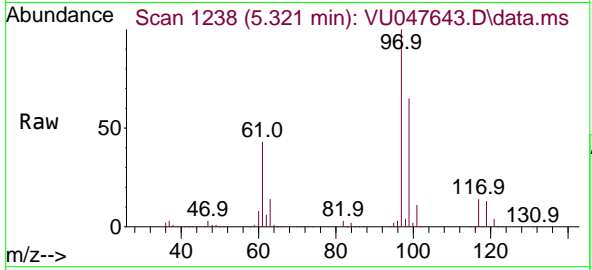
Tgt Ion: 56 Resp: 540
 Ion Ratio Lower Upper
 56 100
 69 17.8 25.4 38.2#
 84 118.9 77.0 115.6#





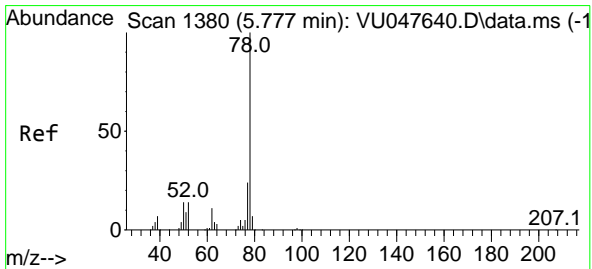
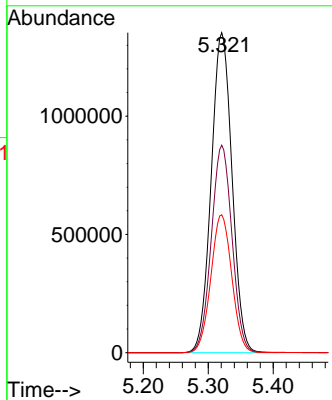
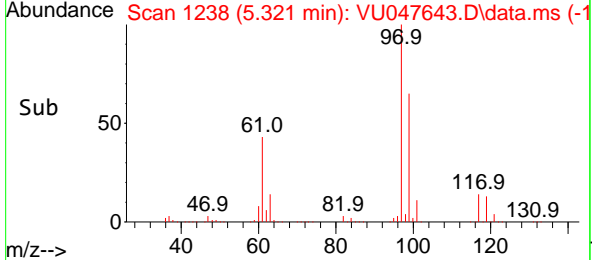
#30
 1,1,1-Trichloroethane
 Concen: 3844.493 ug/L
 RT: 5.321 min Scan# 11
 Delta R.T. 0.000 min
 Lab File: VU047643.D
 Acq: 24 Mar 2022 19:38

Instrument : MSVOA_U
 ClientSampleId : EW5X1



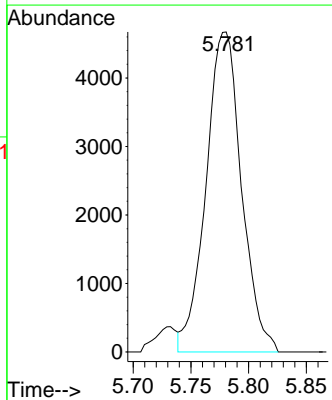
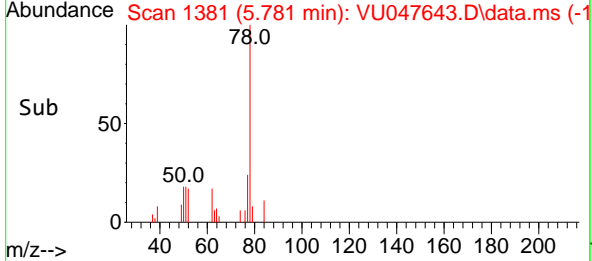
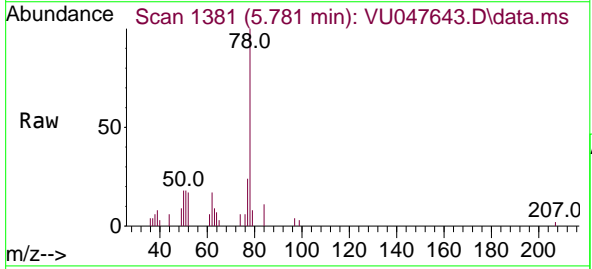
Tgt Ion: 97 Resp: 3009980

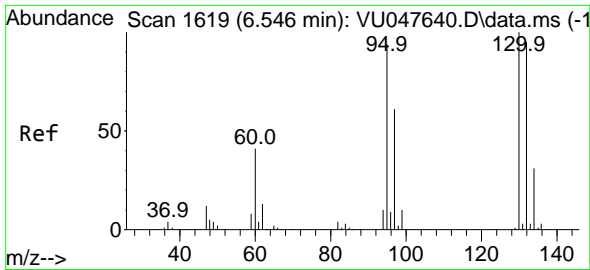
Ion	Ratio	Lower	Upper
97	100		
99	64.7	51.6	77.4
61	43.3	34.2	51.4



#33
 Benzene
 Concen: 4.992 ug/L
 RT: 5.781 min Scan# 1381
 Delta R.T. 0.003 min
 Lab File: VU047643.D
 Acq: 24 Mar 2022 19:38

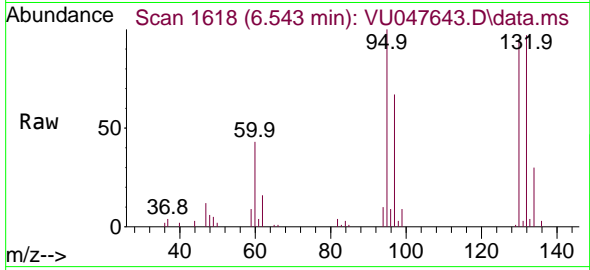
Tgt Ion: 78 Resp: 9977



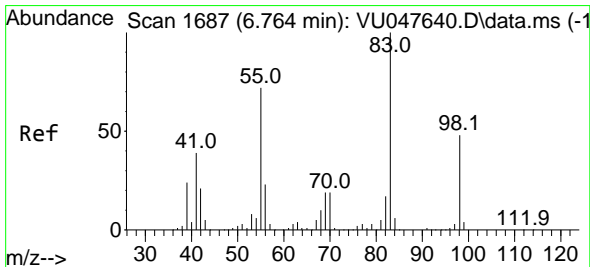
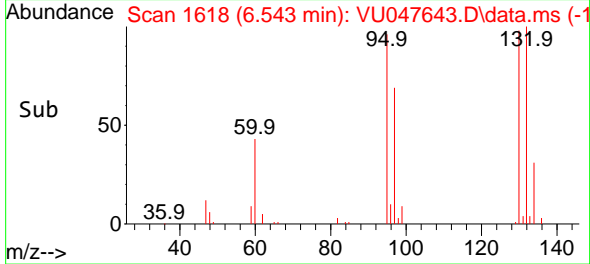
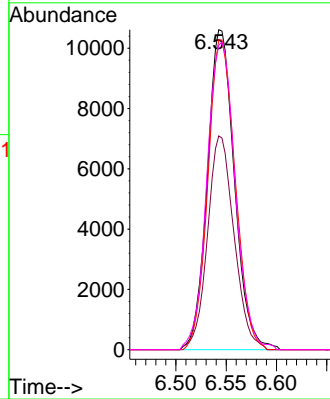


#34
 Trichloroethene
 Concen: 37.918 ug/L
 RT: 6.543 min Scan# 1618
 Delta R.T. -0.003 min
 Lab File: VU047643.D
 Acq: 24 Mar 2022 19:38

Instrument : MSVOA_U
 ClientSampleId : EW5X1

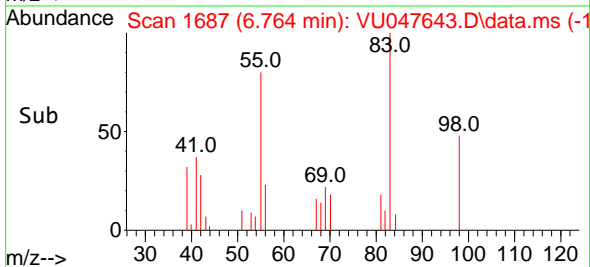
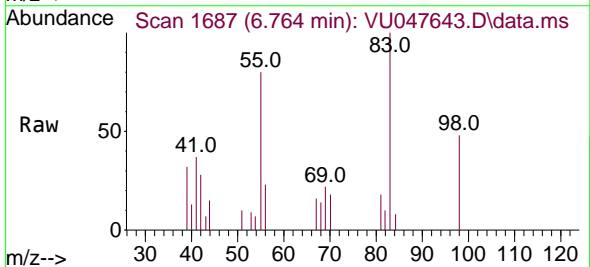
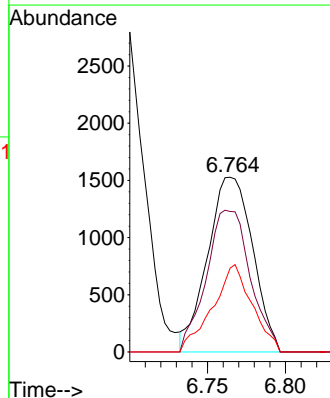


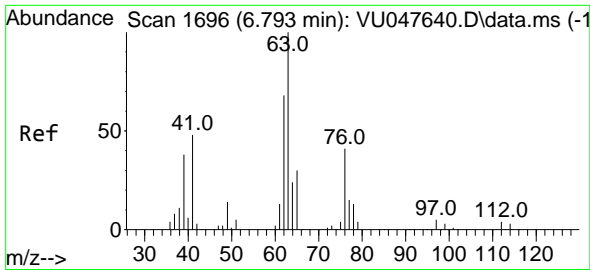
Tgt Ion: 95 Resp: 19868
 Ion Ratio Lower Upper
 95 100
 97 66.8 44.7 82.9
 132 96.8 70.4 130.8
 130 95.2 73.6 136.8



#35
 Methylcyclohexane
 Concen: 3.868 ug/L
 RT: 6.764 min Scan# 1687
 Delta R.T. 0.000 min
 Lab File: VU047643.D
 Acq: 24 Mar 2022 19:38

Tgt Ion: 83 Resp: 3083
 Ion Ratio Lower Upper
 83 100
 55 78.8 56.8 85.2
 98 43.8 38.1 57.1

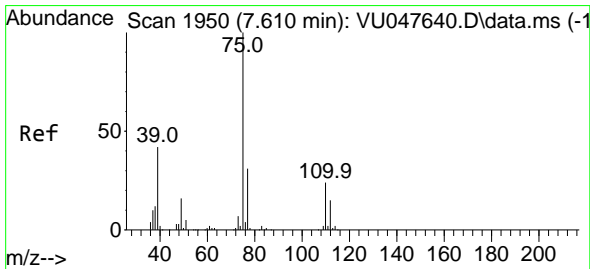
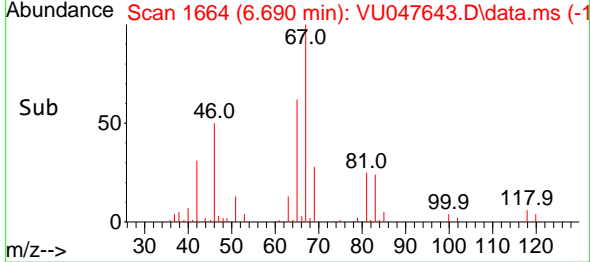
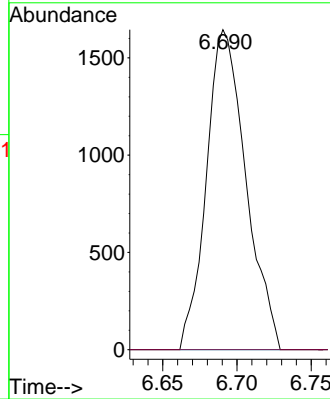
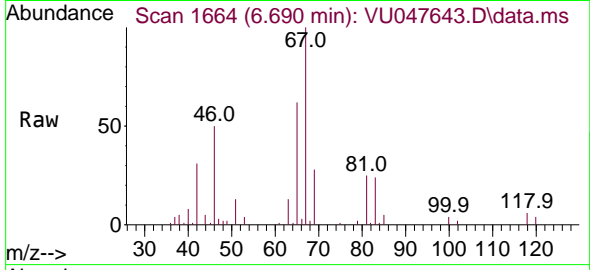




#37
 1,2-Dichloropropane
 Concen: 5.999 ug/L
 RT: 6.690 min Scan# 1664
 Delta R.T. -0.103 min
 Lab File: VU047643.D
 Acq: 24 Mar 2022 19:38

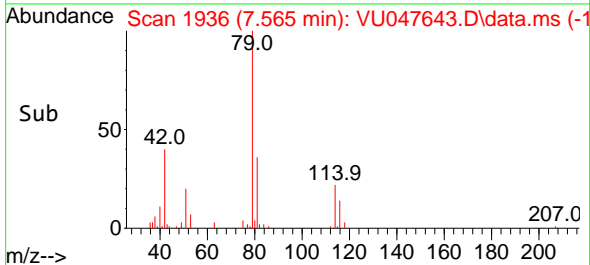
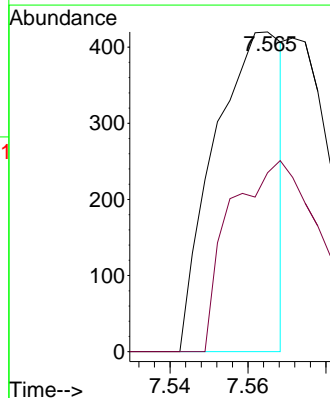
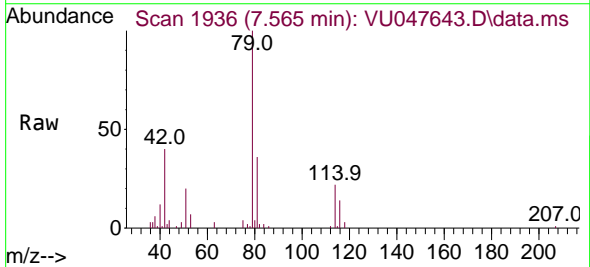
Instrument : MSVOA_U
 ClientSampleId : EW5X1

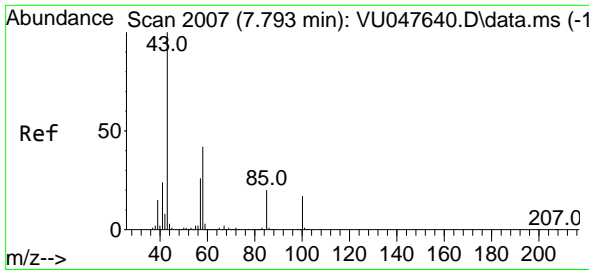
Tgt Ion: 63 Resp: 3048
 Ion Ratio Lower Upper
 63 100
 112 0.0 3.4 5.2#



#39
 cis-1,3-Dichloropropene
 Concen: 0.638 ug/L
 RT: 7.565 min Scan# 1936
 Delta R.T. -0.045 min
 Lab File: VU047643.D
 Acq: 24 Mar 2022 19:38

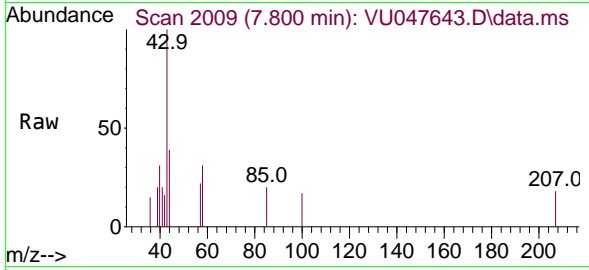
Tgt Ion: 75 Resp: 503
 Ion Ratio Lower Upper
 75 100
 77 56.0 21.8 40.6#



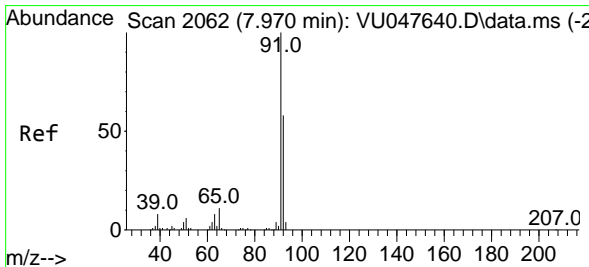
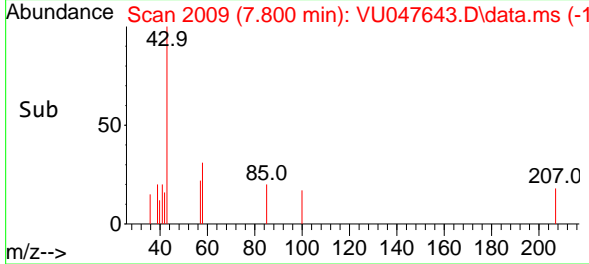
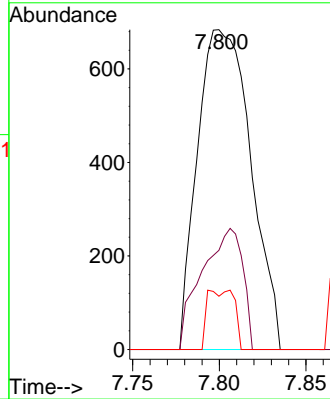


#40
 4-Methyl-2-pentanone
 Concen: 1.826 ug/L
 RT: 7.800 min Scan# 2007
 Delta R.T. 0.007 min
 Lab File: VU047643.D
 Acq: 24 Mar 2022 19:38

Instrument : MSVOA_U
 ClientSampleId : EW5X1

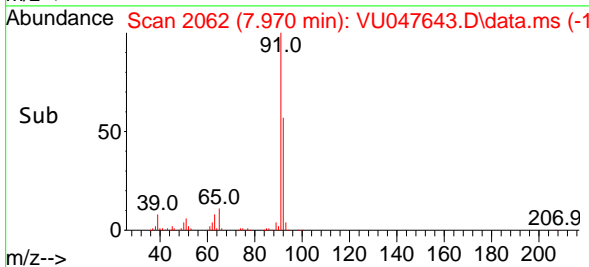
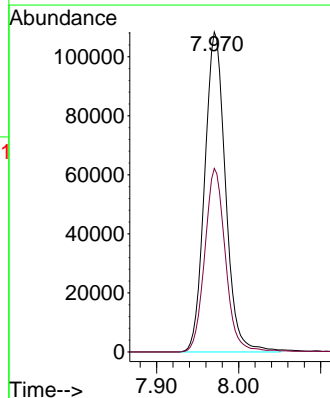
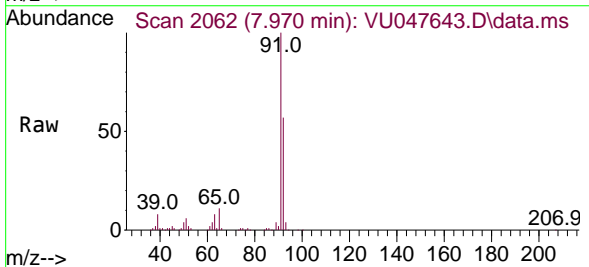


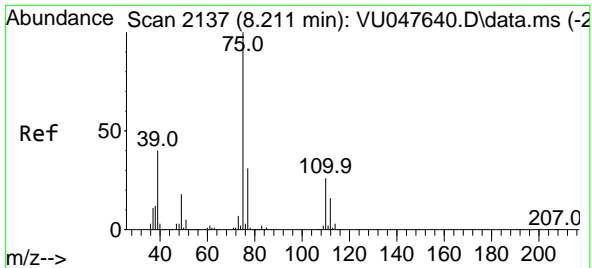
Tgt Ion: 43 Resp: 1466
 Ion Ratio Lower Upper
 43 100
 58 29.1 34.7 52.1#
 100 4.8 14.2 21.2#



#42
 Toluene
 Concen: 87.221 ug/L
 RT: 7.970 min Scan# 2062
 Delta R.T. 0.000 min
 Lab File: VU047643.D
 Acq: 24 Mar 2022 19:38

Tgt Ion: 91 Resp: 191271
 Ion Ratio Lower Upper
 91 100
 92 57.3 40.4 75.0

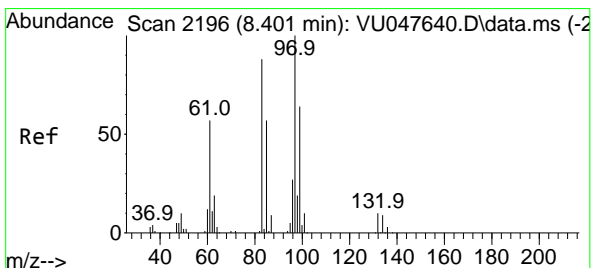
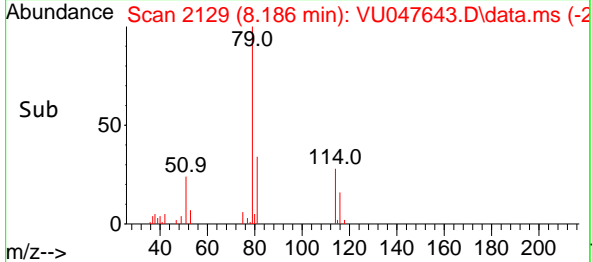
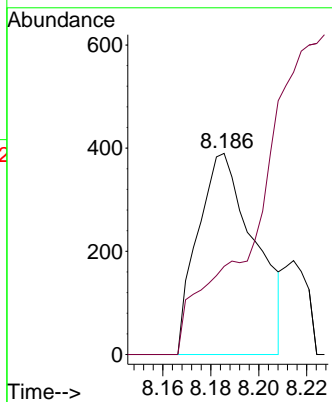
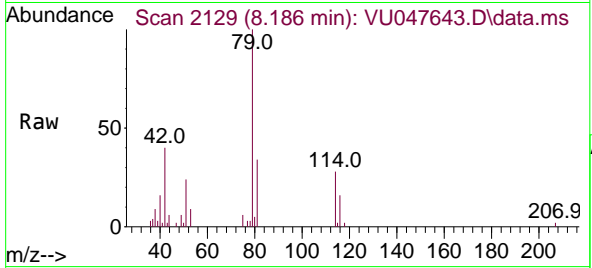




#44
 trans-1,3-Dichloropropene
 Concen: 0.813 ug/L
 RT: 8.186 min Scan# 2129
 Delta R.T. -0.026 min
 Lab File: VU047643.D
 Acq: 24 Mar 2022 19:38

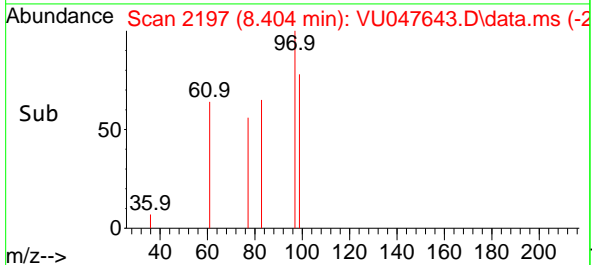
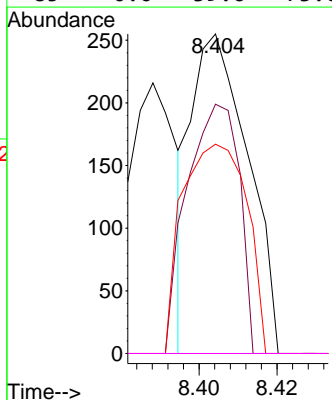
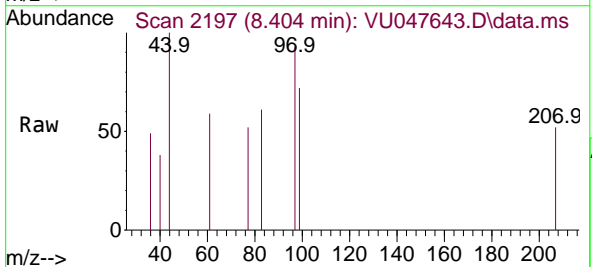
Instrument : MSVOA_U
 ClientSampleId : EW5X1

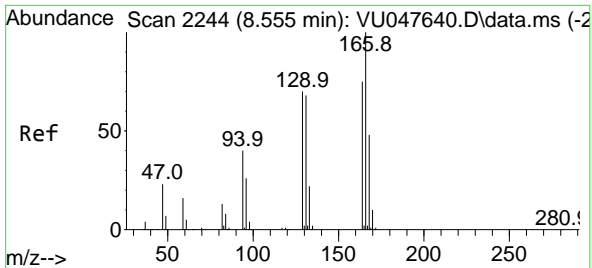
Tgt Ion: 75 Resp: 640
 Ion Ratio Lower Upper
 75 100
 77 43.8 22.0 40.8#



#45
 1,1,2-Trichloroethane
 Concen: 0.477 ug/L
 RT: 8.404 min Scan# 2197
 Delta R.T. 0.003 min
 Lab File: VU047643.D
 Acq: 24 Mar 2022 19:38

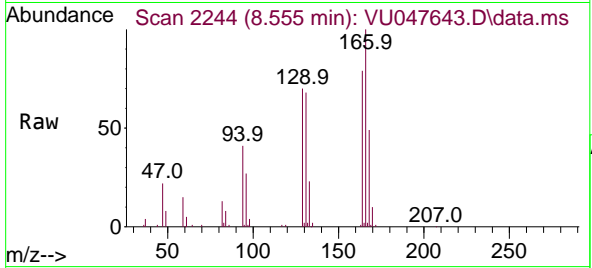
Tgt Ion: 97 Resp: 257
 Ion Ratio Lower Upper
 97 100
 99 78.0 43.3 80.3
 83 65.5 61.0 113.4
 85 0.0 39.6 73.6#





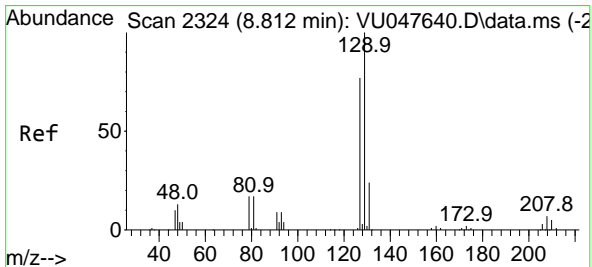
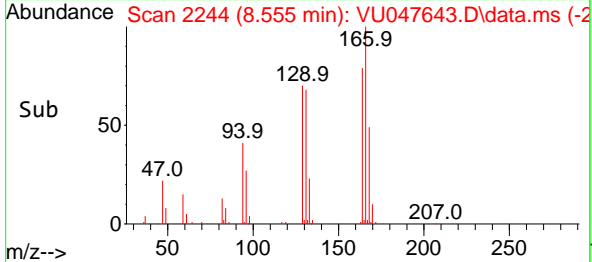
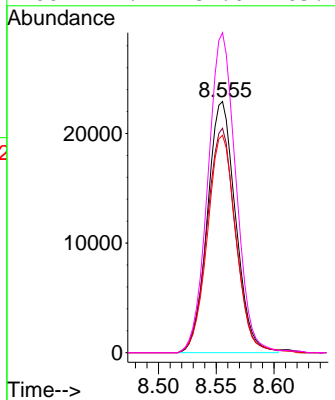
#46
 Tetrachloroethene
 Concen: 82.703 ug/L
 RT: 8.555 min Scan# 2244
 Delta R.T. 0.000 min
 Lab File: VU047643.D
 Acq: 24 Mar 2022 19:38

Instrument : MSVOA_U
 ClientSampleId : EW5X1



Tgt Ion:164 Resp: 38942

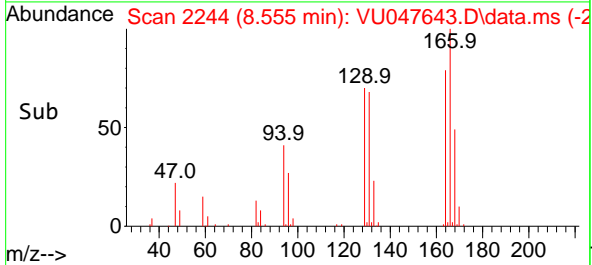
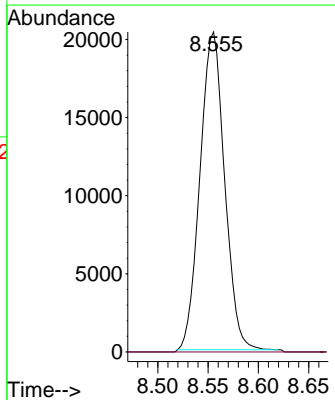
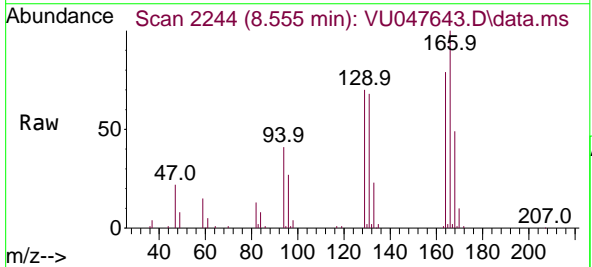
Ion	Ratio	Lower	Upper
164	100		
129	89.4	62.4	116.0
131	86.5	60.7	112.7
166	127.4	89.0	165.4

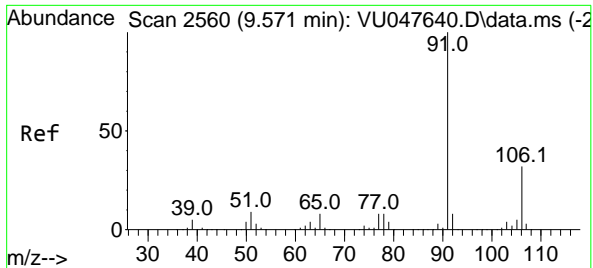


#49
 Dibromochloromethane
 Concen: 55.347 ug/L
 RT: 8.555 min Scan# 2244
 Delta R.T. -0.257 min
 Lab File: VU047643.D
 Acq: 24 Mar 2022 19:38

Tgt Ion:129 Resp: 34543

Ion	Ratio	Lower	Upper
129	100		
127	0.0	54.2	100.6

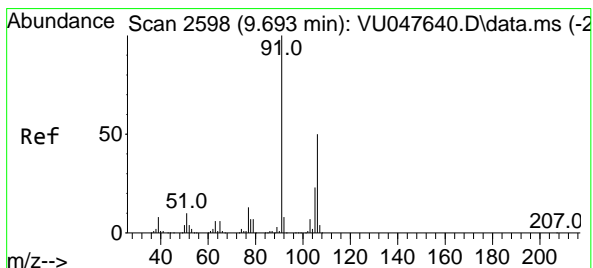
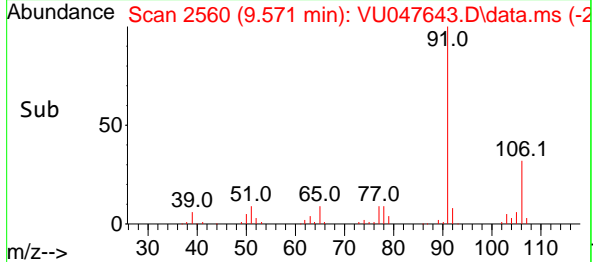
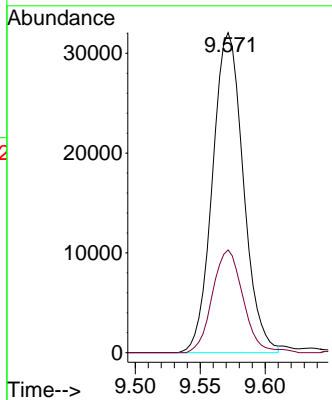
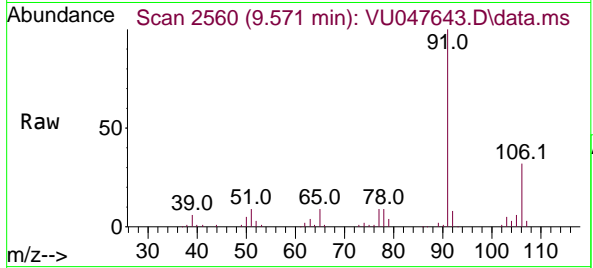




#52
 Ethylbenzene
 Concen: 22.962 ug/L
 RT: 9.571 min Scan# 21
 Delta R.T. 0.000 min
 Lab File: VU047643.D
 Acq: 24 Mar 2022 19:38

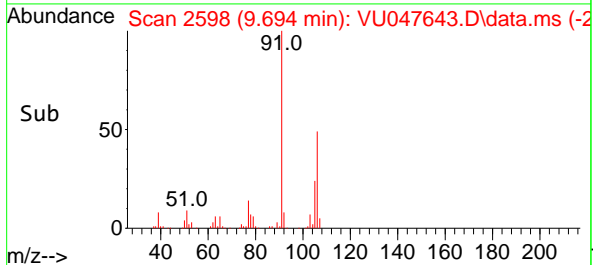
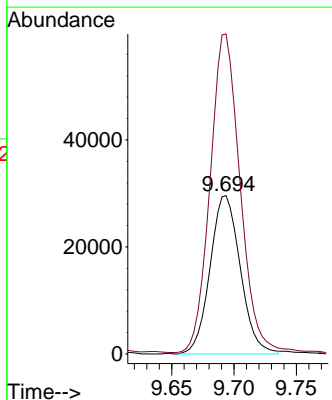
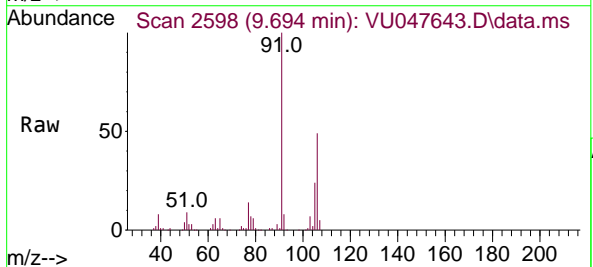
Instrument : MSVOA_U
 ClientSampleId : EW5X1

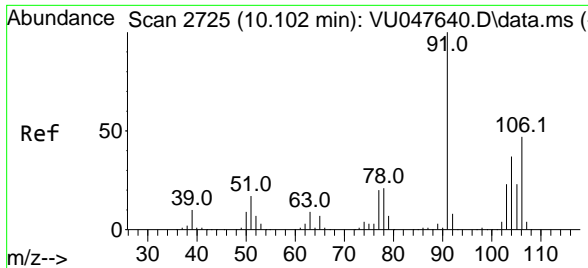
Tgt Ion: 91 Resp: 52945
 Ion Ratio Lower Upper
 91 100
 106 32.1 22.4 41.6



#53
 m,p-Xylene
 Concen: 55.277 ug/L
 RT: 9.694 min Scan# 2598
 Delta R.T. 0.000 min
 Lab File: VU047643.D
 Acq: 24 Mar 2022 19:38

Tgt Ion: 106 Resp: 50012
 Ion Ratio Lower Upper
 106 100
 91 202.1 137.7 255.7

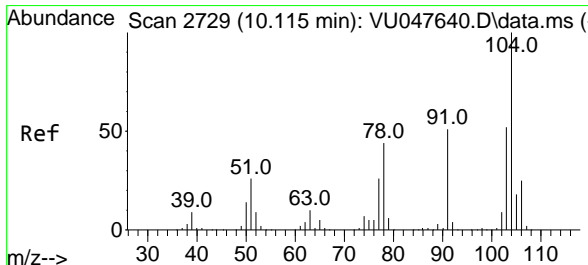
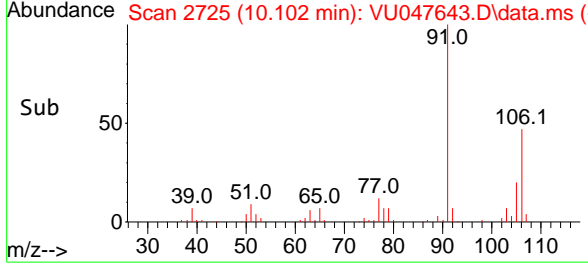
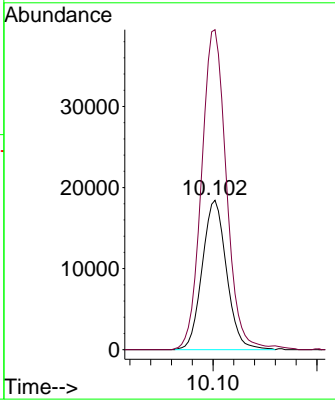
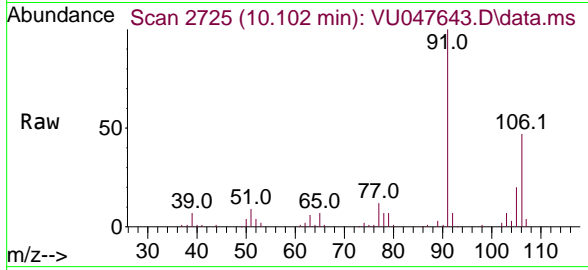




#54
 o-Xylene
 Concen: 33.766 ug/L
 RT: 10.102 min Scan# 2725
 Delta R.T. 0.000 min
 Lab File: VU047643.D
 Acq: 24 Mar 2022 19:38

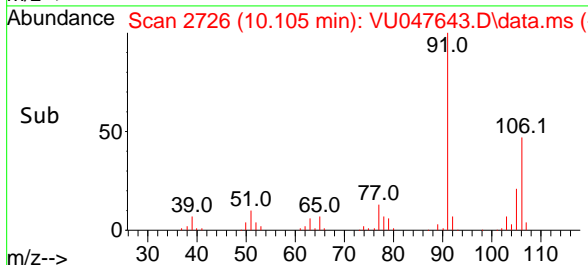
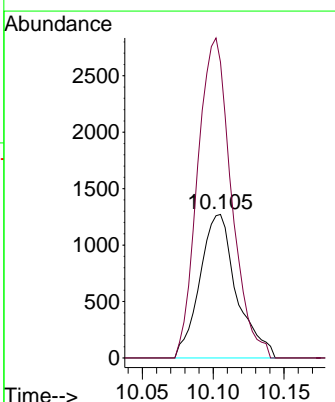
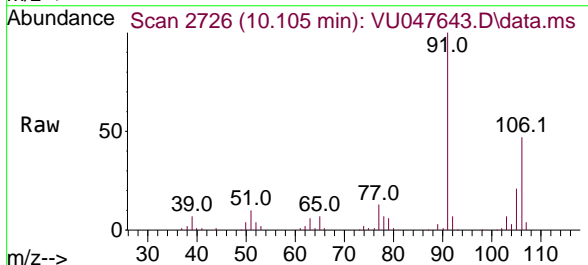
Instrument : MSVOA_U
 ClientSampleId : EW5X1

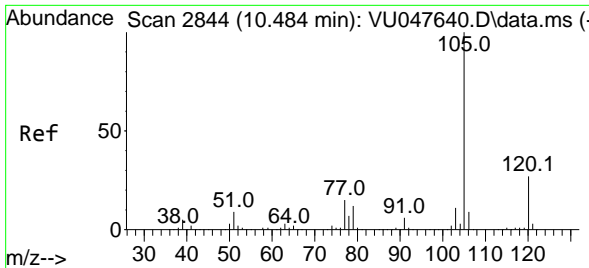
Tgt Ion:106 Resp: 29984
 Ion Ratio Lower Upper
 106 100
 91 214.1 146.7 272.5



#55
 Styrene
 Concen: 1.515 ug/L
 RT: 10.105 min Scan# 2726
 Delta R.T. -0.009 min
 Lab File: VU047643.D
 Acq: 24 Mar 2022 19:38

Tgt Ion:104 Resp: 2297
 Ion Ratio Lower Upper
 104 100
 78 206.1 30.4 56.4#



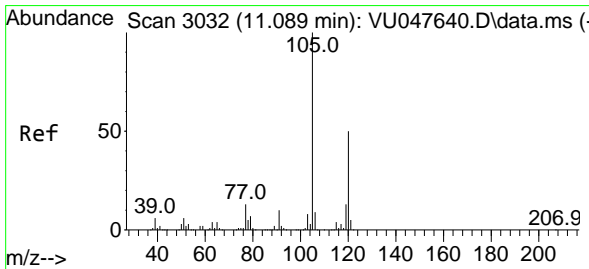
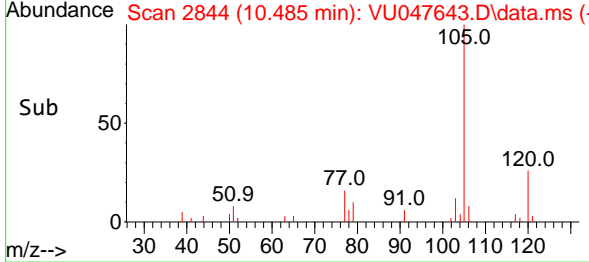
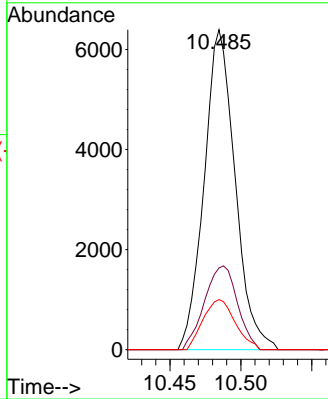
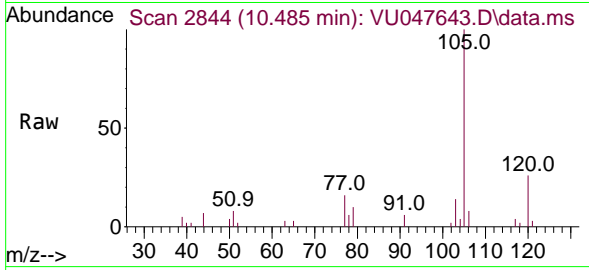


#61
 Isopropylbenzene
 Concen: 4.022 ug/L
 RT: 10.485 min Scan# 2844
 Delta R.T. 0.000 min
 Lab File: VU047643.D
 Acq: 24 Mar 2022 19:38

Instrument : MSVOA_U
 ClientSampleId : EW5X1

Tgt Ion:105 Resp: 9703

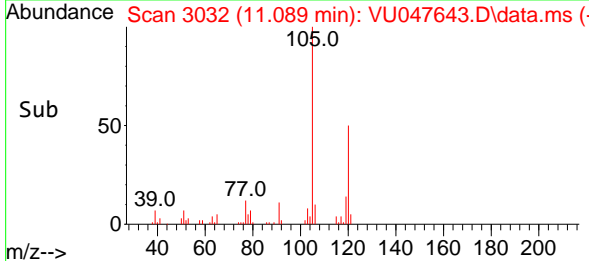
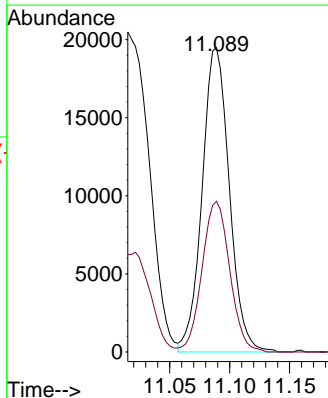
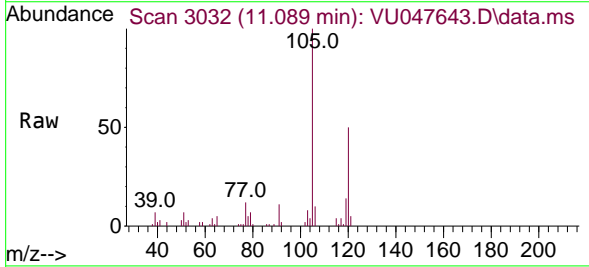
Ion	Ratio	Lower	Upper
105	100		
120	27.9	21.9	32.9
77	16.2	12.1	18.1

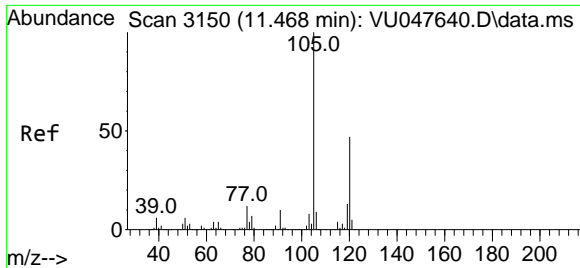


#62
 1,3,5-Trimethylbenzene
 Concen: 23.487 ug/L
 RT: 11.089 min Scan# 3032
 Delta R.T. 0.000 min
 Lab File: VU047643.D
 Acq: 24 Mar 2022 19:38

Tgt Ion:105 Resp: 30742

Ion	Ratio	Lower	Upper
105	100		
120	50.4	40.8	61.2

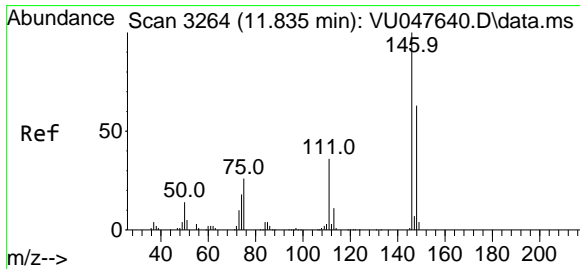
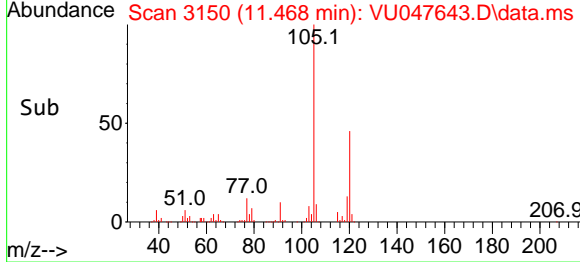
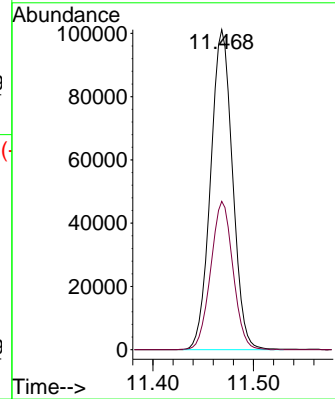
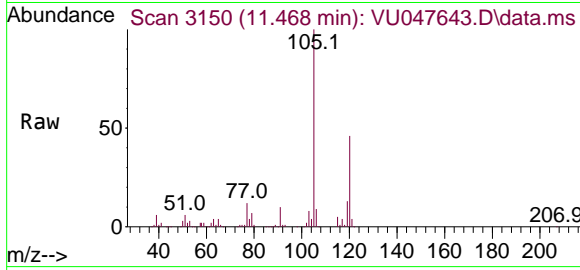




#63
 1,2,4-Trimethylbenzene
 Concen: 77.216 ug/L
 RT: 11.468 min Scan# 3150
 Delta R.T. 0.000 min
 Lab File: VU047643.D
 Acq: 24 Mar 2022 19:38

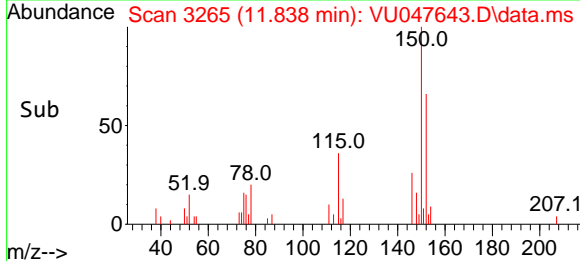
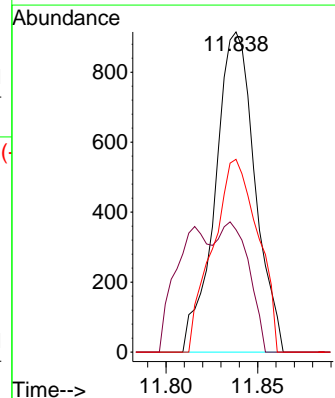
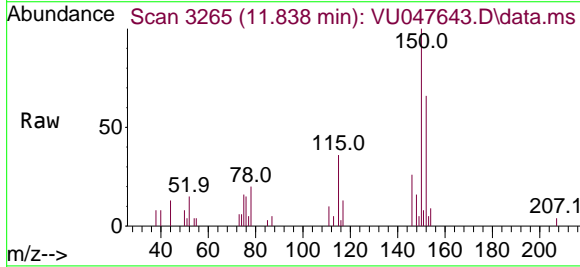
Instrument : MSVOA_U
 ClientSampleId : EW5X1

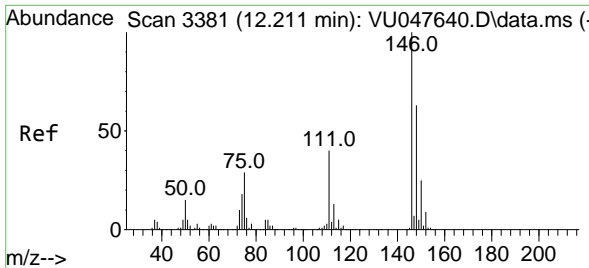
Tgt Ion:105 Resp: 153517
 Ion Ratio Lower Upper
 105 100
 120 47.0 37.6 56.4



#65
 1,4-Dichlorobenzene
 Concen: 0.995 ug/L
 RT: 11.838 min Scan# 3265
 Delta R.T. 0.003 min
 Lab File: VU047643.D
 Acq: 24 Mar 2022 19:38

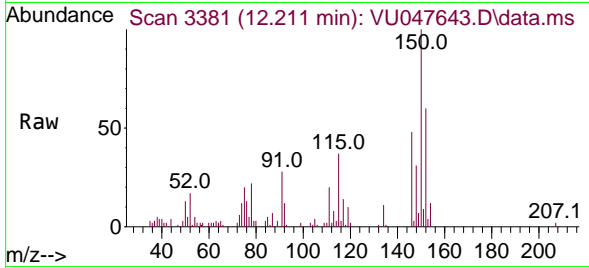
Tgt Ion:146 Resp: 1382
 Ion Ratio Lower Upper
 146 100
 111 38.3 25.3 47.1
 148 60.2 44.5 82.7





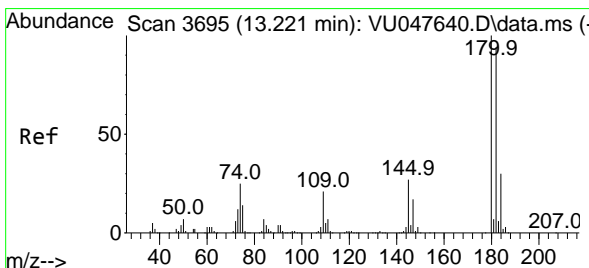
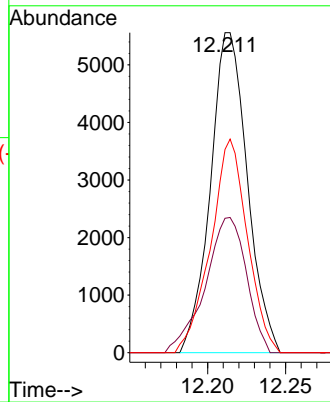
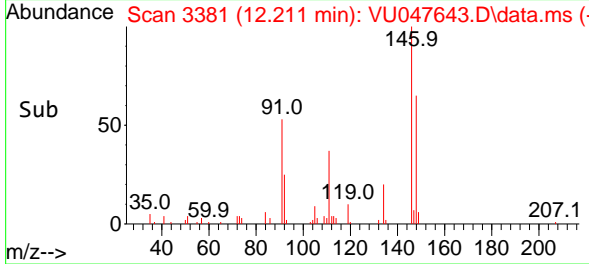
#67
 1,2-Dichlorobenzene
 Concen: 6.825 ug/L
 RT: 12.211 min Scan# 3111
 Delta R.T. 0.000 min
 Lab File: VU047643.D
 Acq: 24 Mar 2022 19:38

Instrument :
 MSVOA_U
 ClientSampleId :
 EW5X1

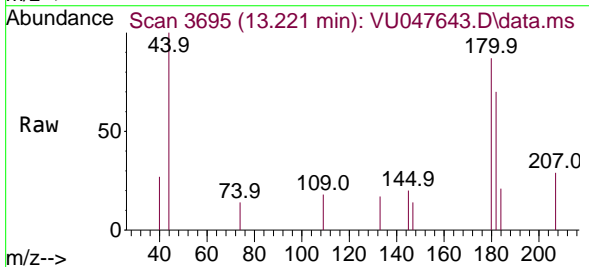


Tgt Ion:146 Resp: 9157

Ion	Ratio	Lower	Upper
146	100		
111	42.0	31.7	47.5
148	63.5	51.4	77.2

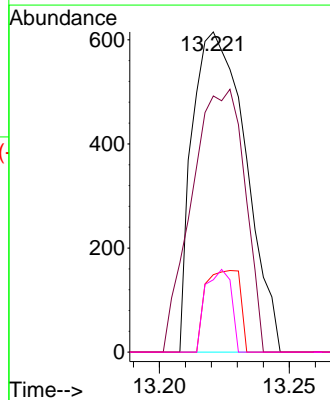
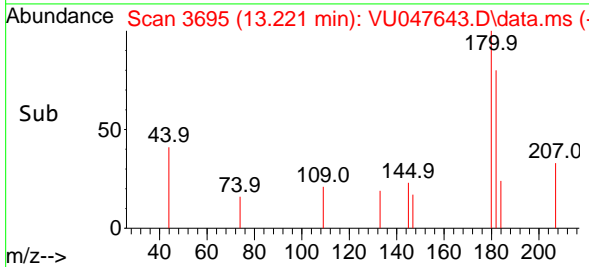


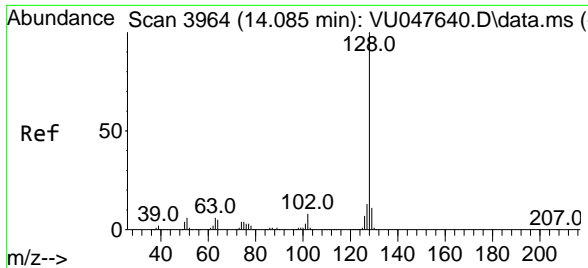
#69
 1,3,5-Trichlorobenzene
 Concen: 0.805 ug/L
 RT: 13.221 min Scan# 3695
 Delta R.T. 0.000 min
 Lab File: VU047643.D
 Acq: 24 Mar 2022 19:38



Tgt Ion:180 Resp: 877

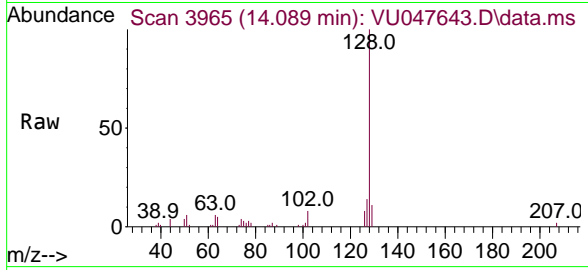
Ion	Ratio	Lower	Upper
180	100		
182	81.6	77.0	115.6
184	16.4	24.5	36.7#
145	12.4	21.0	31.6#





#71
 Naphthalene
 Concen: 9.199 ug/L
 RT: 14.089 min Scan# 3965
 Delta R.T. 0.003 min
 Lab File: VU047643.D
 Acq: 24 Mar 2022 19:38

Instrument : MSVOA_U
 ClientSampleId : EW5X1



Tgt Ion:128 Resp: 26160

Ion	Ratio	Lower	Upper
128	100		
127	14.3	10.2	15.2
129	10.4	8.8	13.2

