

Data Path : Z:\voasrv\HPCHEM1\MSVOA\_U\Data\VU032823\  
 Data File : VU053444.D  
 Acq On : 28 Mar 2023 19:24  
 Operator : JC/MD  
 Sample : 02054-05  
 Misc : 5.0mL/MSVOA\_U/WATER  
 ALS Vial : 22 Sample Multiplier: 1

Instrument :  
 MSVOA\_U  
 ClientSampleId :  
 EYF62

Quant Time: Mar 29 01:14:36 2023  
 Quant Method : Z:\voasrv\HPCHEM1\MSVOA\_U\Method\SFAMULM031523WMA.M  
 Quant Title : VOC Analysis  
 QLast Update : Wed Mar 29 01:10:06 2023  
 Response via : Initial Calibration

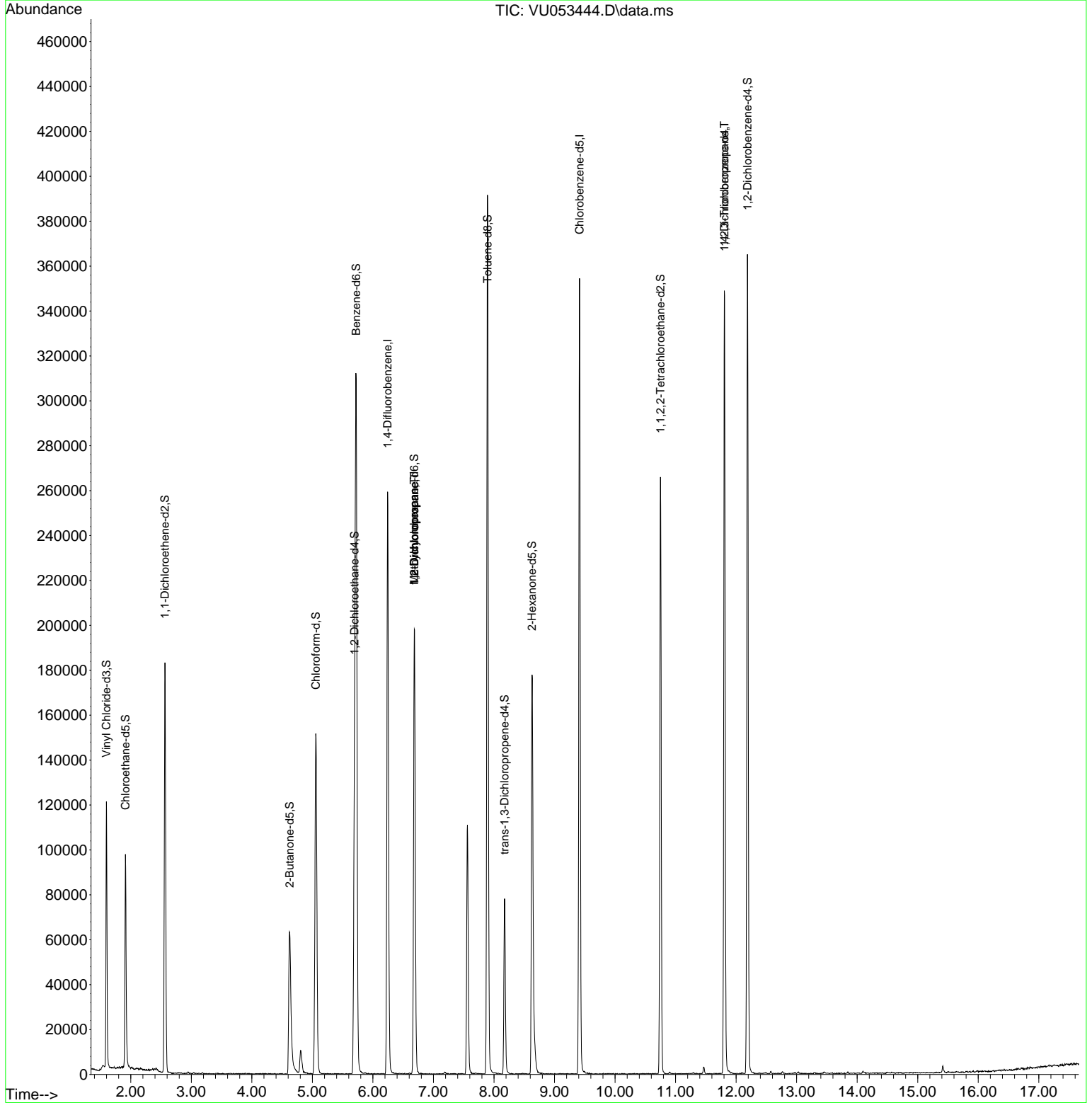
| Compound                      | R.T.    | QIon           | Response   | Conc     | Units  | Dev(Min) |
|-------------------------------|---------|----------------|------------|----------|--------|----------|
| Internal Standards            |         |                |            |          |        |          |
| 1) 1,4-Difluorobenzene        | 6.243   | 114            | 204608     | 50.000   | ug/L   | 0.00     |
| 28) Chlorobenzene-d5          | 9.414   | 117            | 191591     | 50.000   | ug/L   | 0.00     |
| 58) 1,4-Dichlorobenzene-d4    | 11.809  | 152            | 90676      | 50.000   | ug/L   | 0.00     |
| System Monitoring Compounds   |         |                |            |          |        |          |
| 4) Vinyl Chloride-d3          | 1.597   | 65             | 85962      | 45.540   | ug/L   | 0.00     |
| Spiked Amount                 | 50.000  | Range 60 - 135 | Recovery = | 91.080%  |        |          |
| 7) Chloroethane-d5            | 1.912   | 69             | 68894      | 45.121   | ug/L   | 0.00     |
| Spiked Amount                 | 50.000  | Range 70 - 130 | Recovery = | 90.240%  |        |          |
| 11) 1,1-Dichloroethene-d2     | 2.565   | 63             | 106985     | 32.718   | ug/L   | 0.00     |
| Spiked Amount                 | 50.000  | Range 60 - 125 | Recovery = | 65.440%  |        |          |
| 21) 2-Butanone-d5             | 4.623   | 46             | 104734     | 119.629  | ug/L   | 0.00     |
| Spiked Amount                 | 100.000 | Range 40 - 130 | Recovery = | 119.630% |        |          |
| 24) Chloroform-d              | 5.057   | 84             | 135698     | 43.646   | ug/L   | 0.00     |
| Spiked Amount                 | 50.000  | Range 70 - 125 | Recovery = | 87.300%  |        |          |
| 26) 1,2-Dichloroethane-d4     | 5.697   | 65             | 93611      | 48.482   | ug/L   | 0.00     |
| Spiked Amount                 | 50.000  | Range 70 - 125 | Recovery = | 96.960%  |        |          |
| 32) Benzene-d6                | 5.722   | 84             | 284438     | 45.771   | ug/L   | 0.00     |
| Spiked Amount                 | 50.000  | Range 70 - 125 | Recovery = | 91.540%  |        |          |
| 36) 1,2-Dichloropropane-d6    | 6.684   | 67             | 95543      | 47.637   | ug/L   | 0.00     |
| Spiked Amount                 | 50.000  | Range 70 - 120 | Recovery = | 95.280%  |        |          |
| 41) Toluene-d8                | 7.893   | 98             | 256940     | 44.409   | ug/L   | 0.00     |
| Spiked Amount                 | 50.000  | Range 80 - 120 | Recovery = | 88.820%  |        |          |
| 43) trans-1,3-Dichloroprop... | 8.176   | 79             | 44072      | 44.537   | ug/L   | 0.00     |
| Spiked Amount                 | 50.000  | Range 60 - 125 | Recovery = | 89.080%  |        |          |
| 47) 2-Hexanone-d5             | 8.629   | 63             | 61202      | 97.605   | ug/L   | 0.00     |
| Spiked Amount                 | 100.000 | Range 45 - 130 | Recovery = | 97.600%  |        |          |
| 56) 1,1,2,2-Tetrachloroeth... | 10.751  | 84             | 129541     | 49.859   | ug/L   | 0.00     |
| Spiked Amount                 | 50.000  | Range 65 - 120 | Recovery = | 99.720%  |        |          |
| 66) 1,2-Dichlorobenzene-d4    | 12.188  | 152            | 92881      | 52.901   | ug/L   | 0.00     |
| Spiked Amount                 | 50.000  | Range 80 - 120 | Recovery = | 105.800% |        |          |
| Target Compounds              |         |                |            |          |        |          |
| 35) Methylcyclohexane         | 6.684   | 83             | 21445      | 7.064    | ug/L # | 21       |
| 37) 1,2-Dichloropropane       | 6.687   | 63             | 9883       | 5.333    | ug/L # | 90       |
| 60) 1,2,3-Trichloropropane    | 11.806  | 75             | 11926      | 6.619    | ug/L # | 69       |

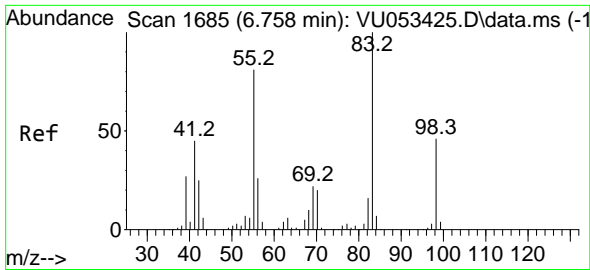
(#) = qualifier out of range (m) = manual integration (+) = signals summed

Data Path : Z:\voasrv\HPCHEM1\MSVOA\_U\Data\VU032823\  
 Data File : VU053444.D  
 Acq On : 28 Mar 2023 19:24  
 Operator : JC/MD  
 Sample : 02054-05  
 Misc : 5.0mL/MSVOA\_U/WATER  
 ALS Vial : 22 Sample Multiplier: 1

Instrument :  
 MSVOA\_U  
 ClientSampleId :  
 EYF62

Quant Time: Mar 29 01:14:36 2023  
 Quant Method : Z:\voasrv\HPCHEM1\MSVOA\_U\Method\SFAMULM031523WMA.M  
 Quant Title : VOC Analysis  
 QLast Update : Wed Mar 29 01:10:06 2023  
 Response via : Initial Calibration

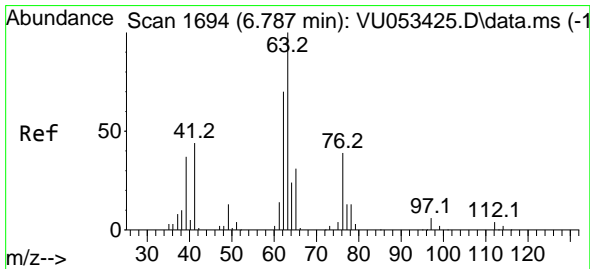
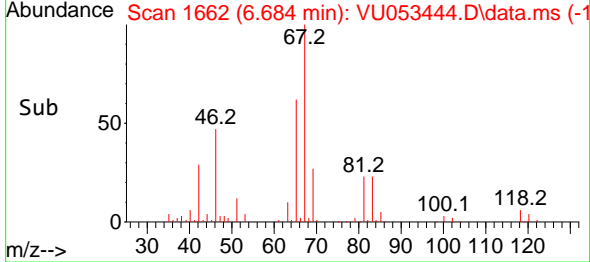
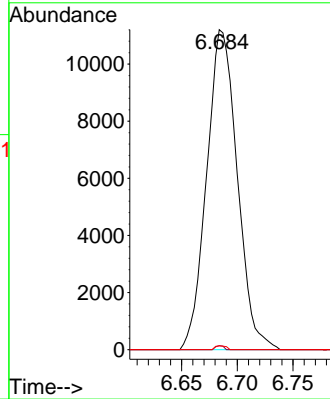
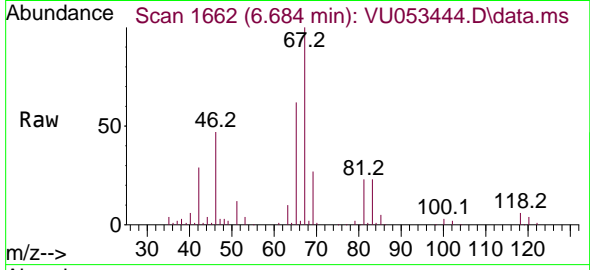




#35  
 Methylcyclohexane  
 Concen: 7.064 ug/L  
 RT: 6.684 min Scan# 1662  
 Delta R.T. -0.074 min  
 Lab File: VU053444.D  
 Acq: 28 Mar 2023 19:24

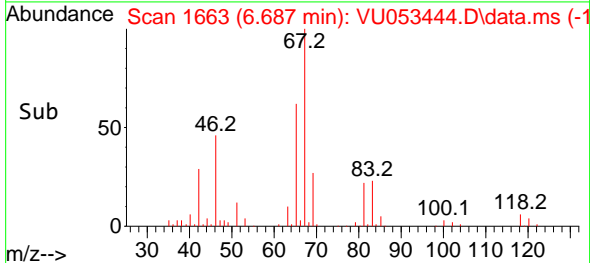
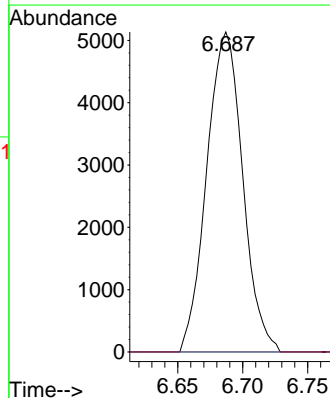
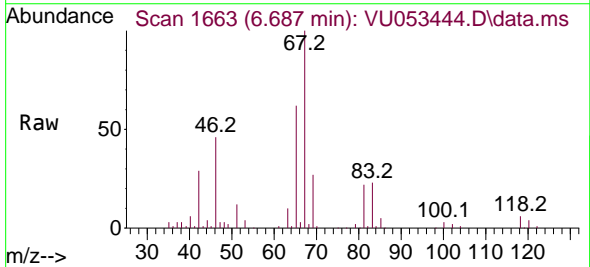
Instrument : MSVOA\_U  
 ClientSampleId : EYF62

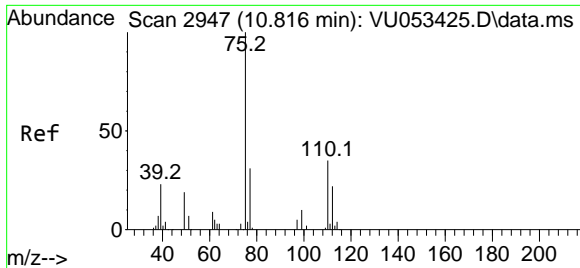
Tgt Ion: 83 Resp: 21445  
 Ion Ratio Lower Upper  
 83 100  
 55 0.3 58.2 87.4#  
 98 0.4 35.4 53.2#



#37  
 1,2-Dichloropropane  
 Concen: 5.333 ug/L  
 RT: 6.687 min Scan# 1663  
 Delta R.T. -0.100 min  
 Lab File: VU053444.D  
 Acq: 28 Mar 2023 19:24

Tgt Ion: 63 Resp: 9883  
 Ion Ratio Lower Upper  
 63 100  
 112 0.0 2.6 3.8#





#60  
 1,2,3-Trichloropropane  
 Concen: 6.619 ug/L  
 RT: 11.806 min Scan# 31  
 Delta R.T. 0.990 min  
 Lab File: VU053444.D  
 Acq: 28 Mar 2023 19:24

Instrument : MSVOA\_U  
 ClientSampleId : EYF62

| Tgt Ion | Resp  | Lower | Upper |
|---------|-------|-------|-------|
| 75      | 11926 |       |       |
| 75      | 100   |       |       |
| 77      | 31.3  | 26.6  | 40.0  |
| 110     | 2.3   | 28.6  | 42.8# |

