

Data Path : Z:\voasrv\HPCHEM1\MSVOA_U\Data\VU032823\
 Data File : VU053431.D
 Acq On : 28 Mar 2023 14:20
 Operator : JC/MD
 Sample : 02085-02
 Misc : 5.0mL/MSVOA_U/WATER
 ALS Vial : 9 Sample Multiplier: 1

Instrument :
 MSVOA_U
ClientSampleId :
 COMB1

Quant Time: Mar 29 01:11:41 2023
 Quant Method : Z:\voasrv\HPCHEM1\MSVOA_U\Method\SFAMULM031523WMA.M
 Quant Title : VOC Analysis
 QLast Update : Wed Mar 29 01:10:06 2023
 Response via : Initial Calibration

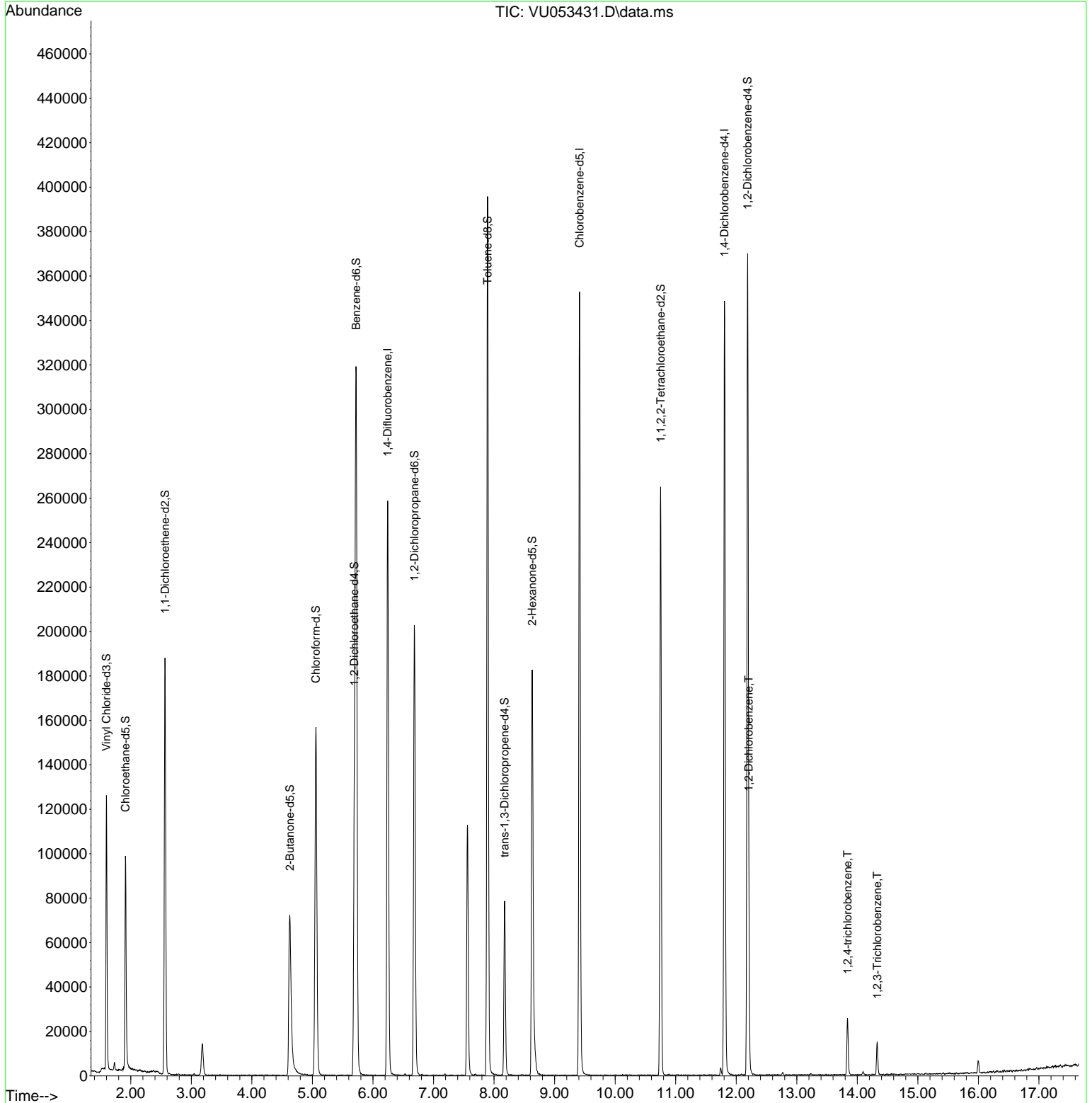
Compound	R.T.	QIon	Response	Conc	Units	Dev(Min)
Internal Standards						
1) 1,4-Difluorobenzene	6.243	114	209104	50.000	ug/L	0.00
28) Chlorobenzene-d5	9.414	117	192130	50.000	ug/L	0.00
58) 1,4-Dichlorobenzene-d4	11.806	152	90007	50.000	ug/L	0.00
System Monitoring Compounds						
4) Vinyl Chloride-d3	1.597	65	89691	46.494	ug/L	0.00
Spiked Amount	50.000	Range 60 - 135	Recovery =	92.980%		
7) Chloroethane-d5	1.912	69	70903	45.439	ug/L	0.00
Spiked Amount	50.000	Range 70 - 130	Recovery =	90.880%		
11) 1,1-Dichloroethene-d2	2.565	63	111373	33.327	ug/L	0.00
Spiked Amount	50.000	Range 60 - 125	Recovery =	66.660%		
21) 2-Butanone-d5	4.626	46	106761	119.323	ug/L	0.00
Spiked Amount	100.000	Range 40 - 130	Recovery =	119.320%		
24) Chloroform-d	5.057	84	139849	44.014	ug/L	0.00
Spiked Amount	50.000	Range 70 - 125	Recovery =	88.020%		
26) 1,2-Dichloroethane-d4	5.694	65	95008	48.148	ug/L	0.00
Spiked Amount	50.000	Range 70 - 125	Recovery =	96.300%		
32) Benzene-d6	5.723	84	288013	46.217	ug/L	0.00
Spiked Amount	50.000	Range 70 - 125	Recovery =	92.440%		
36) 1,2-Dichloropropane-d6	6.684	67	98226	48.837	ug/L	0.00
Spiked Amount	50.000	Range 70 - 120	Recovery =	97.680%		
41) Toluene-d8	7.893	98	264185	45.533	ug/L	0.00
Spiked Amount	50.000	Range 80 - 120	Recovery =	91.060%		
43) trans-1,3-Dichloroprop...	8.173	79	45032	45.380	ug/L	0.00
Spiked Amount	50.000	Range 60 - 125	Recovery =	90.760%		
47) 2-Hexanone-d5	8.629	63	60502	96.218	ug/L	0.00
Spiked Amount	100.000	Range 45 - 130	Recovery =	96.220%		
56) 1,1,2,2-Tetrachloroeth...	10.751	84	128399	49.281	ug/L	0.00
Spiked Amount	50.000	Range 65 - 120	Recovery =	98.560%		
66) 1,2-Dichlorobenzene-d4	12.189	152	91671	52.600	ug/L	0.00
Spiked Amount	50.000	Range 80 - 120	Recovery =	105.200%		
Target Compounds						
67) 1,2-Dichlorobenzene	12.208	146	14423	4.838	ug/L	98
70) 1,2,4-trichlorobenzene	13.838	180	8410	4.950	ug/L	97
72) 1,2,3-Trichlorobenzene	14.330	180	4807	2.983	ug/L	96

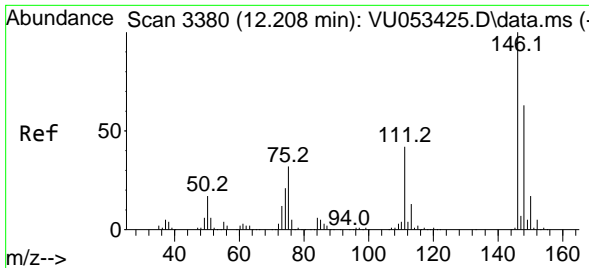
(#) = qualifier out of range (m) = manual integration (+) = signals summed

Data Path : Z:\voasrv\HPCHEM1\MSVOA_U\Data\VU032823\
 Data File : VU053431.D
 Acq On : 28 Mar 2023 14:20
 Operator : JC/MD
 Sample : 02085-02
 Misc : 5.0mL/MSVOA_U/WATER
 ALS Vial : 9 Sample Multiplier: 1

Instrument :
 MSVOA_U
 ClientSampleId :
 COMB1

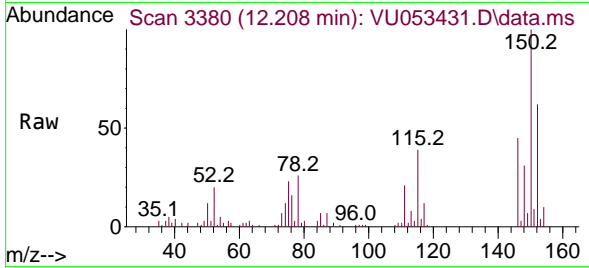
Quant Time: Mar 29 01:11:41 2023
 Quant Method : Z:\voasrv\HPCHEM1\MSVOA_U\Method\SFAMULM031523WMA.M
 Quant Title : VOC Analysis
 QLast Update : Wed Mar 29 01:10:06 2023
 Response via : Initial Calibration



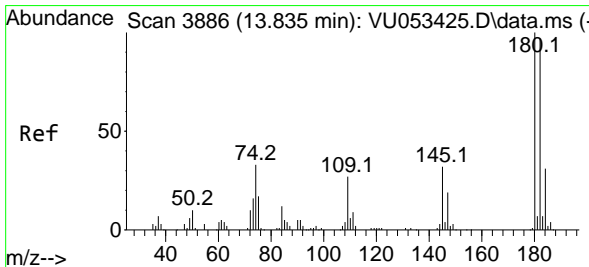
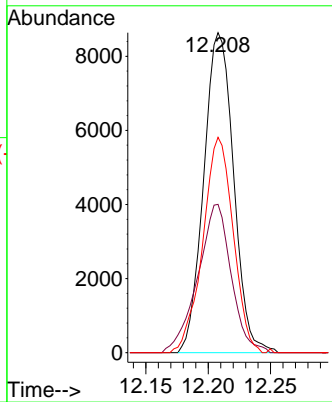
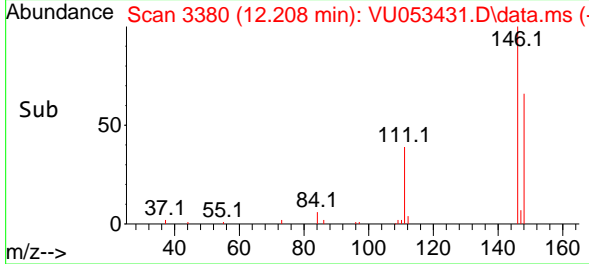


#67
 1,2-Dichlorobenzene
 Concen: 4.838 ug/L
 RT: 12.208 min Scan# 311
 Delta R.T. -0.000 min
 Lab File: VU053431.D
 Acq: 28 Mar 2023 14:20

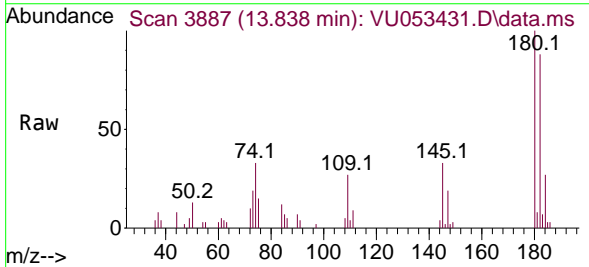
Instrument : MSVOA_U
 ClientSampleId : COMB1



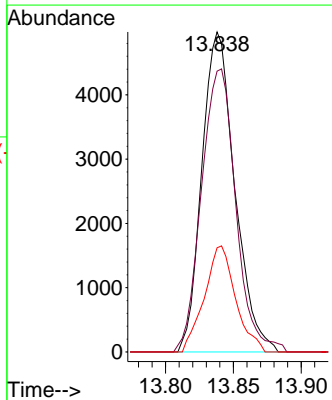
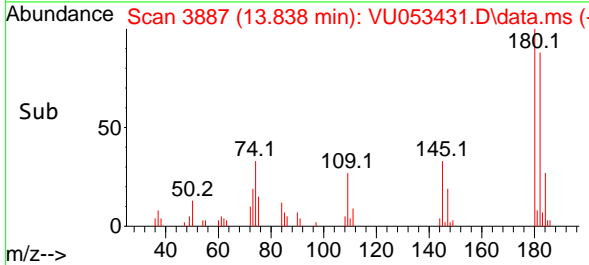
Tgt Ion:146 Resp: 14423
 Ion Ratio Lower Upper
 146 100
 111 46.3 37.0 55.4
 148 67.3 51.4 77.2

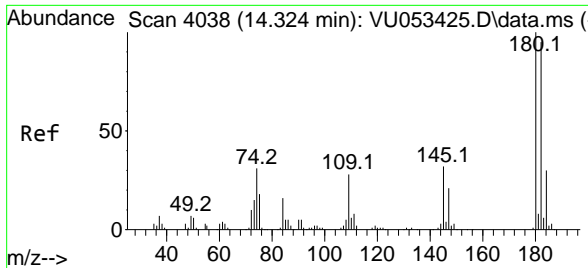


#70
 1,2,4-trichlorobenzene
 Concen: 4.950 ug/L
 RT: 13.838 min Scan# 3887
 Delta R.T. 0.003 min
 Lab File: VU053431.D
 Acq: 28 Mar 2023 14:20



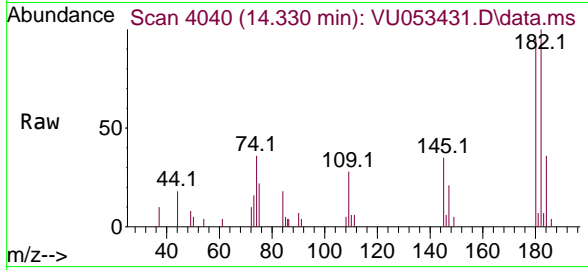
Tgt Ion:180 Resp: 8410
 Ion Ratio Lower Upper
 180 100
 182 92.2 75.8 113.8
 145 31.4 27.2 40.8





#72
 1,2,3-Trichlorobenzene
 Concen: 2.983 ug/L
 RT: 14.330 min Scan# 40
 Delta R.T. 0.006 min
 Lab File: VU053431.D
 Acq: 28 Mar 2023 14:20

Instrument :
 MSVOA_U
 ClientSampleId :
 COMB1



Tgt Ion:180 Resp: 4807

Ion	Ratio	Lower	Upper
180	100		
182	99.1	76.7	115.1
145	31.3	28.6	42.8

