

Data Path : Z:\voasrv\HPCHEM1\MSVOA\_U\Data\VU032824\  
 Data File : VU058257.D  
 Acq On : 28 Mar 2024 22:10  
 Operator : MD/SY  
 Sample : P1902-18MSD  
 Misc : 25.0mL/MSVOA\_U/WATER  
 ALS Vial : 26 Sample Multiplier: 1

**Instrument :**  
 MSVOA\_U  
**ClientSampleId :**

Quant Time: Mar 29 01:15:49 2024  
 Quant Method : Z:\voasrv\HPCHEM1\MSVOA\_U\Method\SFAMUTR032124WMA.M  
 Quant Title : TRACE VOA SFAM1.0  
 QLast Update : Fri Mar 29 01:09:13 2024  
 Response via : Initial Calibration

Compound	R.T.	QI on	Response	Conc	Units	Dev(Min)
<b>Internal Standards</b>						
1) 1,4-Difluorobenzene	6.242	114	71222	5.000	ug/L	0.00
28) Chlorobenzene-d5	9.409	117	67155	5.000	ug/L	0.00
58) 1,4-Dichlorobenzene-d4	11.804	152	33591	5.000	ug/L	0.00
<b>System Monitoring Compounds</b>						
4) Vinyl chloride-d3	1.596	65	22601	3.755	ug/L	0.00
Spiked Amount	5.000	Range 40 - 130	Recovery	=	75.200%	
7) Chloroethane-d5	1.908	69	21409	4.358	ug/L	0.00
Spiked Amount	5.000	Range 65 - 130	Recovery	=	87.200%	
11) 1,1-Dichloroethene-d2	2.560	65	9410	3.766	ug/L	0.00
Spiked Amount	5.000	Range 60 - 125	Recovery	=	75.400%	
20) 2-Butanone-d5	4.628	46	58805	54.996	ug/L	0.00
Spiked Amount	50.000	Range 40 - 130	Recovery	=	110.000%	
24) Chloroform-d	5.055	84	50355	4.680	ug/L	0.00
Spiked Amount	5.000	Range 70 - 125	Recovery	=	93.600%	
26) 1,2-Dichloroethane-d4	5.692	65	24007	4.772	ug/L	0.00
Spiked Amount	5.000	Range 70 - 130	Recovery	=	95.400%	
32) Benzene-d6	5.718	84	95846	4.394	ug/L	0.00
Spiked Amount	5.000	Range 70 - 125	Recovery	=	87.800%	
36) 1,2-Dichloropropane-d6	6.682	67	29728	4.624	ug/L	0.00
Spiked Amount	5.000	Range 60 - 140	Recovery	=	92.400%	
41) Toluene-d8	7.891	98	81659	4.226	ug/L	0.00
Spiked Amount	5.000	Range 70 - 130	Recovery	=	84.600%	
43) trans-1,3-Dichloropropene	8.174	79	9563	4.643	ug/L	0.00
Spiked Amount	5.000	Range 55 - 130	Recovery	=	92.800%	
46) 2-Hexanone-d5	8.628	63	44819	53.729	ug/L	0.00
Spiked Amount	50.000	Range 45 - 130	Recovery	=	107.460%	
56) 1,1,2,2-Tetrachloroethane	10.750	84	21246	5.073	ug/L	0.00
Spiked Amount	5.000	Range 65 - 120	Recovery	=	101.400%	
66) 1,2-Dichlorobenzene-d4	12.187	152	28565	4.567	ug/L	0.00
Spiked Amount	5.000	Range 80 - 120	Recovery	=	91.400%	
<b>Target Compounds</b>						
2) Dichlorodifluoromethane	1.380	85	11418	3.892	ug/L	98
3) Chloromethane	1.515	50	13796	3.690	ug/L	98
5) Vinyl chloride	1.599	62	19016	4.657	ug/L	100
6) Bromomethane	1.853	94	7054	3.221	ug/L	96
8) Chloroethane	1.930	64	12245	4.547	ug/L	96
9) Trichlorofluoromethane	2.133	101	28804	4.341	ug/L	98
10) 1,1,2-Trichloro-1,2,2-trifluoroethane	2.576	101	18297	4.296	ug/L	98
12) 1,1-Dichloroethene	2.576	96	16327	4.573	ug/L	85
13) Acetone	2.647	43	29723	42.951	ug/L	99
14) Carbon disulfide	2.789	76	30199	3.785	ug/L	98
15) Methyl Acetate	2.956	43	5437	3.785	ug/L	99
16) Methylene chloride	3.036	84	19283	3.811	ug/L	99
17) Methyl tert-butyl Ether	3.354	73	42941	4.481	ug/L	100
18) trans-1,2-Dichloroethene	3.345	96	18558	4.973	ug/L	97
19) 1,1-Dichloroethane	3.859	63	38272	4.565	ug/L	99
21) 2-Butanone	4.708	43	47228	44.921	ug/L	93
22) cis-1,2-Dichloroethene	4.657	96	124422	26.984	ug/L	99
23) Bromochloromethane	4.965	128	8251	4.795	ug/L	99
25) Chloroform	5.078	83	40044	4.554	ug/L	97

Data Path : Z:\voasrv\HPCHEM1\MSVOA\_U\Data\VU032824\  
 Data File : VU058257.D  
 Acq On : 28 Mar 2024 22:10  
 Operator : MD/SY  
 Sample : P1902-18MSD  
 Misc : 25.0mL/MSVOA\_U/WATER  
 ALS Vial : 26 Sample Multiplier: 1

**Instrument :**  
 MSVOA\_U  
**ClientSampleId :**

Quant Time: Mar 29 01:15:49 2024  
 Quant Method : Z:\voasrv\HPCHEM1\MSVOA\_U\Method\SFAMUTR032124WMA.M  
 Quant Title : TRACE VOA SFAM1.0  
 QLast Update : Fri Mar 29 01:09:13 2024  
 Response via : Initial Calibration

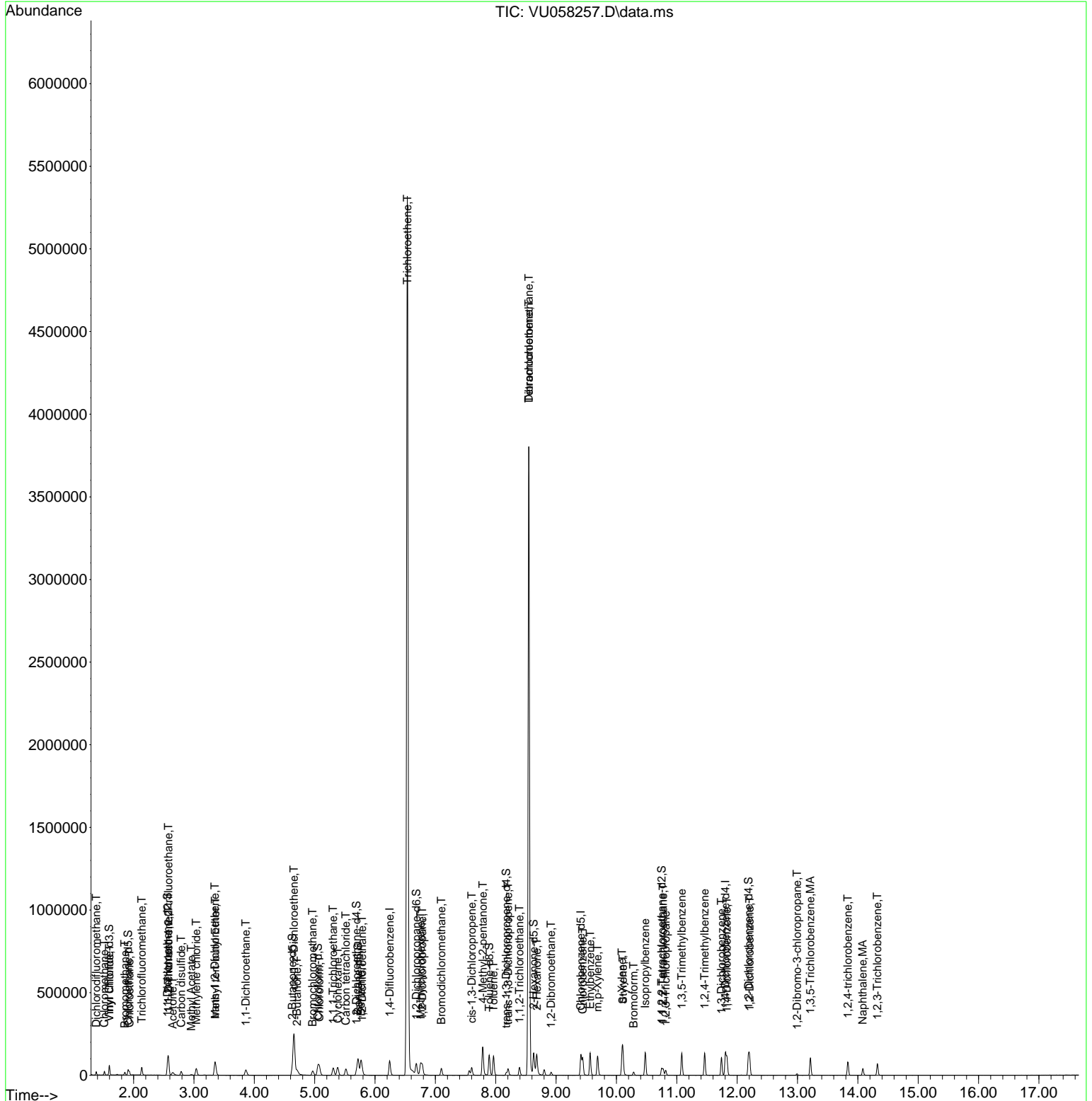
Compound	R. T.	QI on	Response	Conc	Units	Dev(Min)
27) 1,2-Di chloroethane	5.785	62	22970	4.601	ug/L	100
29) 1,1,1-Tri chloroethane	5.306	97	31149	4.486	ug/L	97
30) Cycl ohexane	5.380	56	23750	3.916	ug/L	98
31) Carbon tetrachloride	5.515	117	26519	4.487	ug/L	98
33) Benzene	5.766	78	79408	4.502	ug/L	100
34) Tri chloroethene	6.534	95	1778556	387.050	ug/L	97
35) Methyl cycl ohexane	6.756	83	27640	4.313	ug/L	96
37) 1,2-Di chloropropane	6.782	63	22563	4.579	ug/L	98
38) Bromodi chloromethane	7.097	83	26917	4.766	ug/L	100
39) cis-1,3-Di chloropropene	7.602	75	28362	4.539	ug/L	96
40) 4-Methyl -2-pentanone	7.785	43	113623	45.606	ug/L	99
42) Tol uene	7.962	91	86160	4.623	ug/L	96
44) trans-1,3-Di chloropropene	8.203	75	22530	4.582	ug/L	99
45) 1,1,2-Tri chloroethane	8.393	97	14507	4.674	ug/L	98
47) Tetrachloroethene	8.547	164	755950	245.610	ug/L	98
48) 2-Hexanone	8.679	43	81579	44.963	ug/L	97
49) Di bromochloromethane	8.547	129	780355	229.793	ug/L #	10
50) 1,2-Di bromoethane	8.917	107	12494	4.677	ug/L #	93
51) Chlorobenzene	9.441	112	54354	4.527	ug/L	97
52) Ethyl benzene	9.563	91	93835	4.509	ug/L	97
53) m,p-Xylene	9.685	106	34680	4.677	ug/L	92
54) o-Xylene	10.094	106	33514	4.478	ug/L	99
55) Styrene	10.107	104	55990	4.738	ug/L	97
57) 1,1,2,2-Tetrachloroethane	10.772	83	18510	5.060	ug/L	98
59) Bromoform	10.283	173	8906	5.048	ug/L	94
60) Isopropyl benzene	10.476	105	88675	4.394	ug/L	99
61) 1,2,3-Tri chloropropane	10.814	75	12313	4.377	ug/L	98
62) 1,3,5-Tri methyl benzene	11.081	105	72542	4.283	ug/L	99
63) 1,2,4-Tri methyl benzene	11.460	105	73269	4.356	ug/L	100
64) 1,3-Di chlorobenzene	11.740	146	43015	4.577	ug/L	98
65) 1,4-Di chlorobenzene	11.830	146	41818	4.604	ug/L	97
67) 1,2-Di chlorobenzene	12.206	146	39918	4.593	ug/L	97
68) 1,2-Di bromo-3-chloropr...	12.991	75	2425	5.717	ug/L	95
69) 1,3,5-Tri chlorobenzene	13.213	180	30973	4.713	ug/L	100
70) 1,2,4-tri chlorobenzene	13.833	180	24086	4.914	ug/L	97
71) Naphthalene	14.081	128	33548	5.026	ug/L	99
72) 1,2,3-Tri chlorobenzene	14.322	180	21073	5.250	ug/L	98

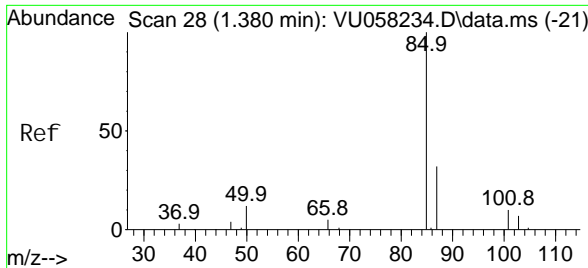
(#) = qualifier out of range (m) = manual integration (+) = signals summed

Data Path : Z:\voasrv\HPCHEM1\MSVOA\_U\Data\VU032824\  
 Data File : VU058257.D  
 Acq On : 28 Mar 2024 22:10  
 Operator : MD/SY  
 Sample : P1902-18MSD  
 Misc : 25.0mL/MSVOA\_U/WATER  
 ALS Vial : 26 Sample Multiplier: 1

Instrument :  
 MSVOA\_U  
 ClientSampleId :

Quant Time: Mar 29 01:15:49 2024  
 Quant Method : Z:\voasrv\HPCHEM1\MSVOA\_U\Method\SFAMUTR032124WMA.M  
 Quant Title : TRACE VOA SFAM1.0  
 QLast Update : Fri Mar 29 01:09:13 2024  
 Response via : Initial Calibration

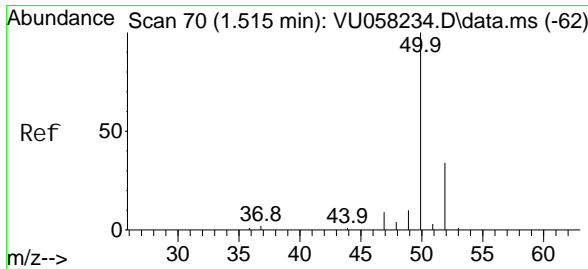
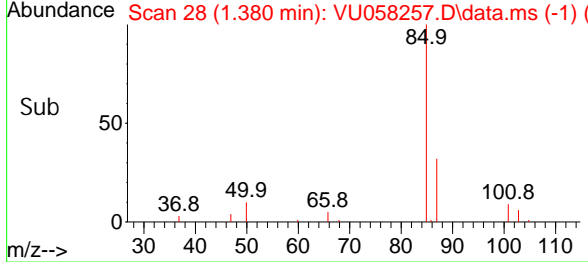
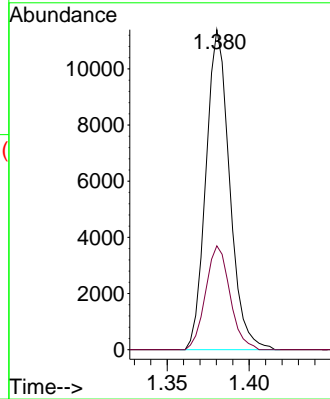
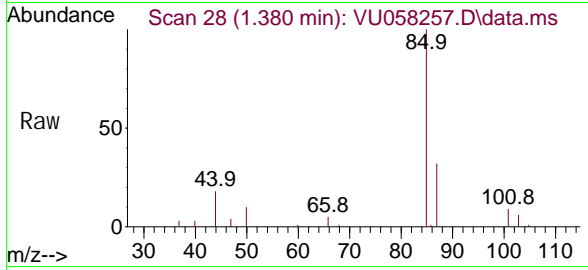




#2  
 Dichlorodifluoromethane  
 Concen: 3.892 ug/L  
 RT: 1.380 min Scan# 28  
 Delta R.T. 0.000 min  
 Lab File: VU058257.D  
 Acq: 28 Mar 2024 22:10

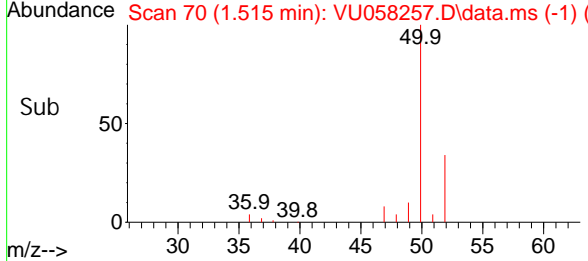
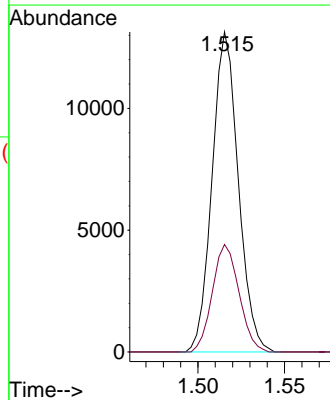
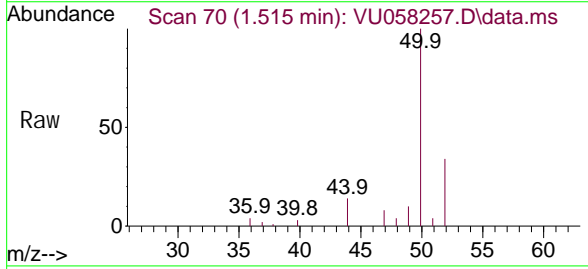
Instrument :  
 MSVOA\_U  
 ClientSampleId :

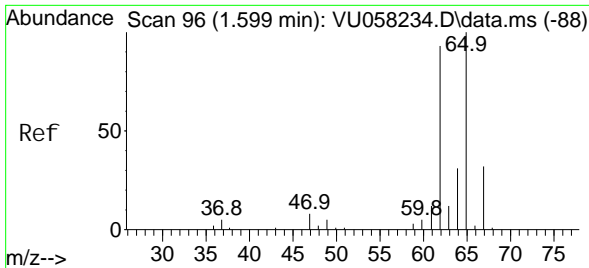
Tgt Ion: 85 Resp: 11418  
 Ion Ratio Lower Upper  
 85 100  
 87 33.4 25.8 38.8



#3  
 Chloromethane  
 Concen: 3.690 ug/L  
 RT: 1.515 min Scan# 70  
 Delta R.T. 0.000 min  
 Lab File: VU058257.D  
 Acq: 28 Mar 2024 22:10

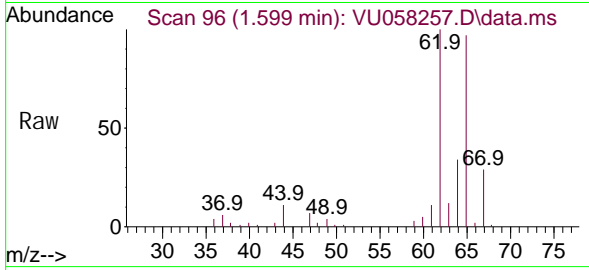
Tgt Ion: 50 Resp: 13796  
 Ion Ratio Lower Upper  
 50 100  
 52 33.6 24.2 45.0



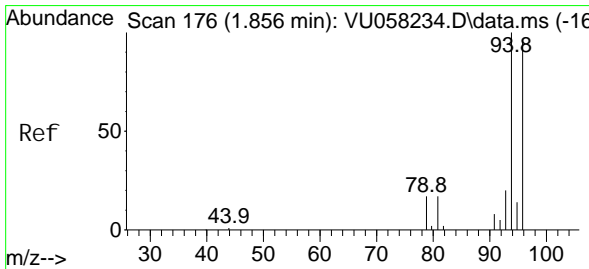
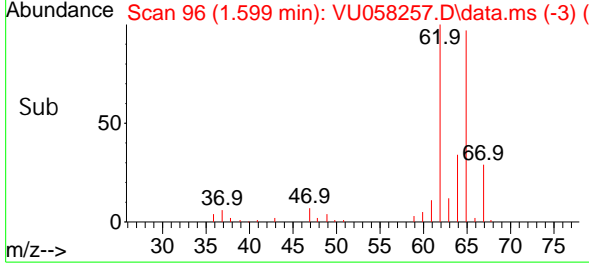
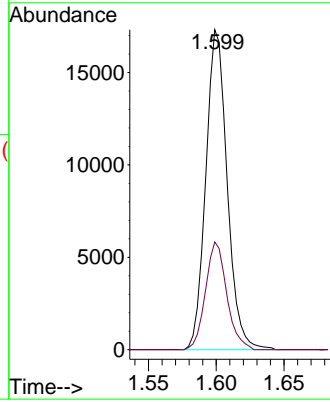


#5  
 Vinyl chloride  
 Concen: 4.657 ug/L  
 RT: 1.599 min Scan# 90  
 Delta R.T. 0.000 min  
 Lab File: VU058257.D  
 Acq: 28 Mar 2024 22:10

Instrument :  
 MSVOA\_U  
 ClientSampleId :

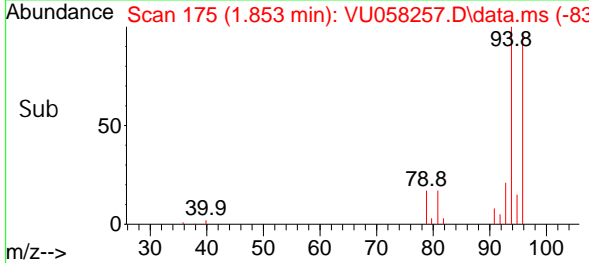
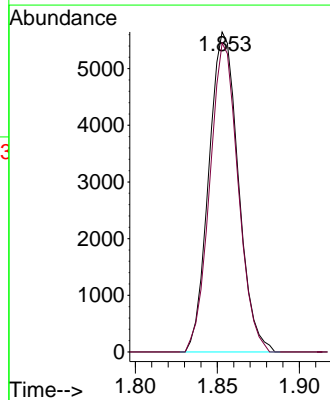
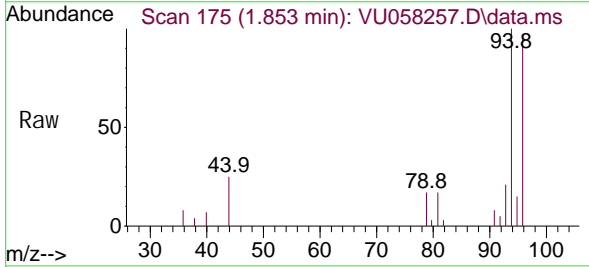


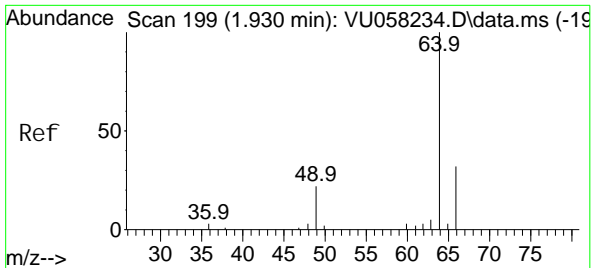
Tgt Ion: 62 Resp: 19016  
 Ion Ratio Lower Upper  
 62 100  
 64 33.6 23.4 43.6



#6  
 Bromomethane  
 Concen: 3.221 ug/L  
 RT: 1.853 min Scan# 175  
 Delta R.T. -0.003 min  
 Lab File: VU058257.D  
 Acq: 28 Mar 2024 22:10

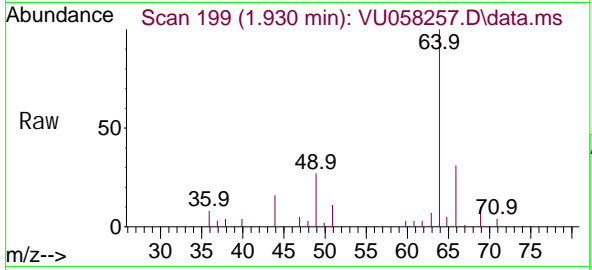
Tgt Ion: 94 Resp: 7054  
 Ion Ratio Lower Upper  
 94 100  
 96 96.5 64.8 120.4



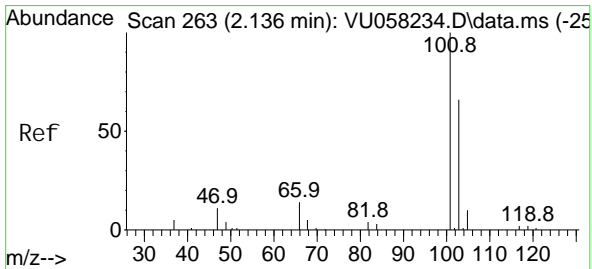
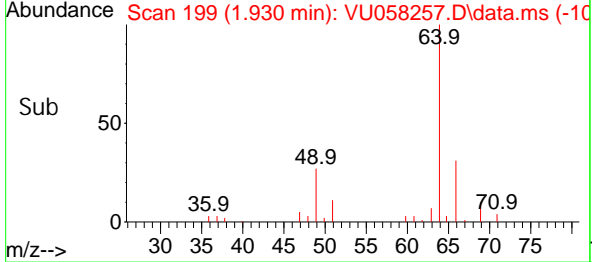
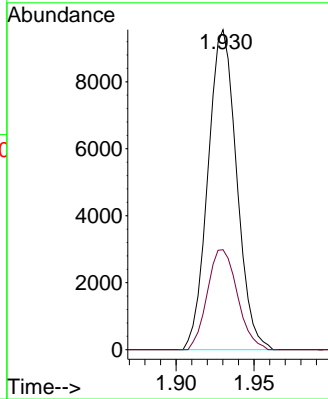


#8  
 Chloroethane  
 Concen: 4.547 ug/L  
 RT: 1.930 min Scan# 199  
 Delta R.T. 0.000 min  
 Lab File: VU058257.D  
 Acq: 28 Mar 2024 22: 10

Instrument :  
 MSVOA\_U  
 ClientSampleId :

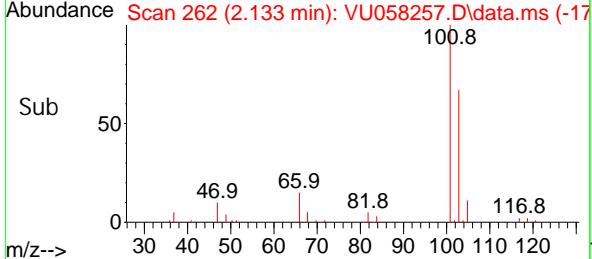
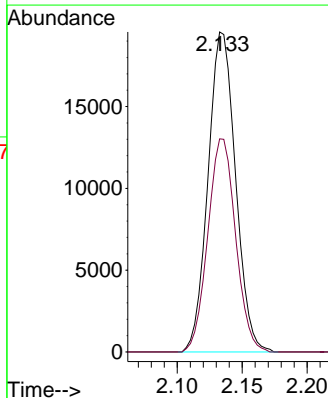
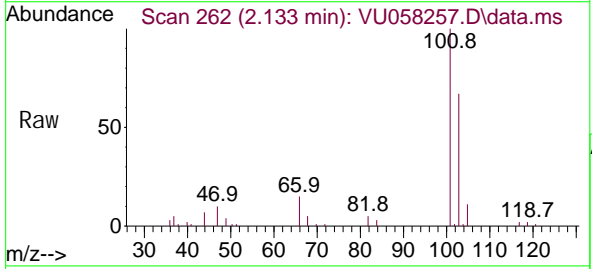


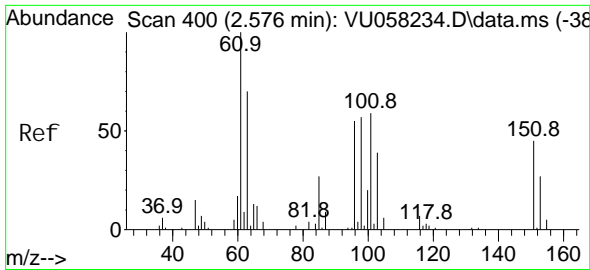
Tgt Ion: 64 Resp: 12245  
 Ion Ratio Lower Upper  
 64 100  
 66 29.8 22.5 41.9



#9  
 Trichlorofluoromethane  
 Concen: 4.341 ug/L  
 RT: 2.133 min Scan# 262  
 Delta R.T. -0.003 min  
 Lab File: VU058257.D  
 Acq: 28 Mar 2024 22: 10

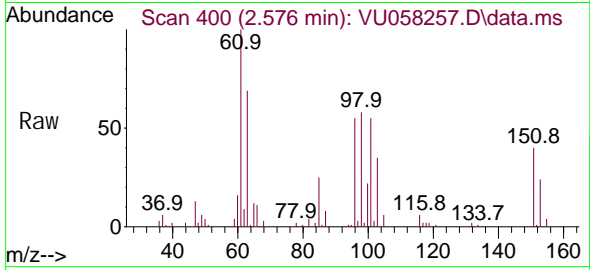
Tgt Ion: 101 Resp: 28804  
 Ion Ratio Lower Upper  
 101 100  
 103 67.3 52.3 78.5



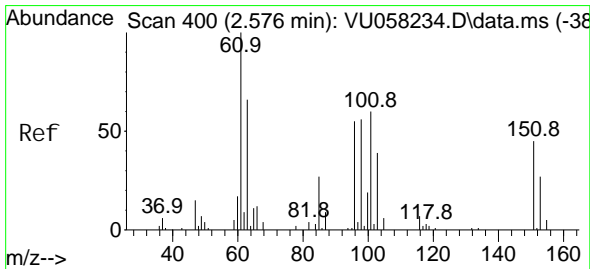
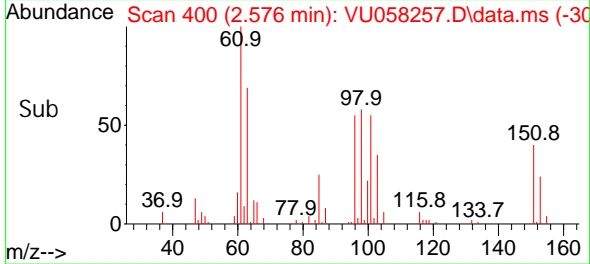
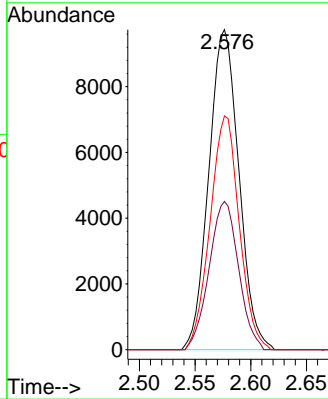


#10  
 1,1,2-Tri chloro-1,2,2-tri fluoroethane  
 Concen: 4.296 ug/L  
 RT: 2.576 min Scan# 400  
 Delta R.T. 0.000 min  
 Lab File: VU058257.D  
 Acq: 28 Mar 2024 22:10

Instrument :  
 MSVOA\_U  
 ClientSampleId :

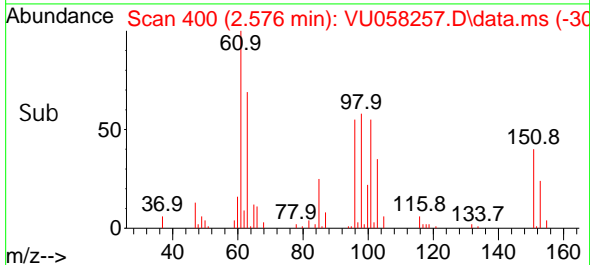
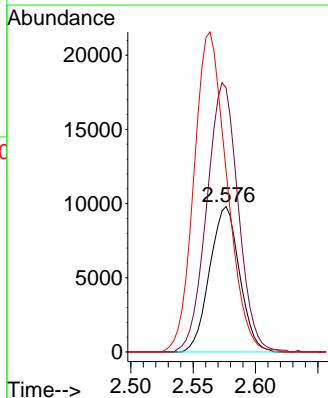
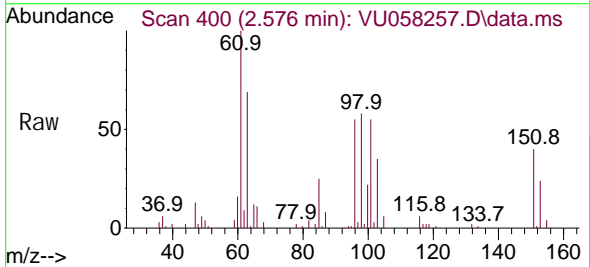


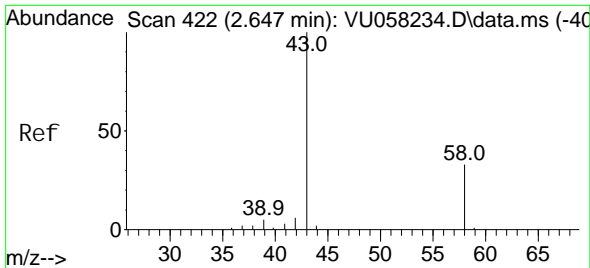
Tgt Ion: 101 Resp: 18297  
 Ion Ratio Lower Upper  
 101 100  
 85 45.3 37.9 56.9  
 151 70.7 55.3 82.9



#12  
 1,1-Di chloroethene  
 Concen: 4.573 ug/L  
 RT: 2.576 min Scan# 400  
 Delta R.T. 0.000 min  
 Lab File: VU058257.D  
 Acq: 28 Mar 2024 22:10

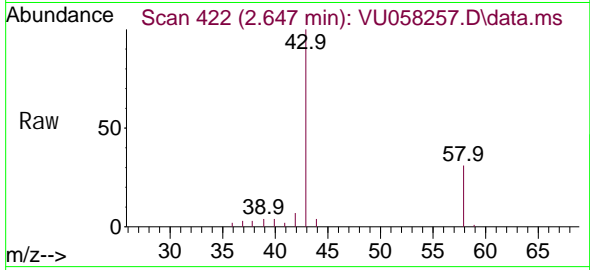
Tgt Ion: 96 Resp: 16327  
 Ion Ratio Lower Upper  
 96 100  
 61 181.5 128.1 237.9  
 63 124.7 116.8 217.0



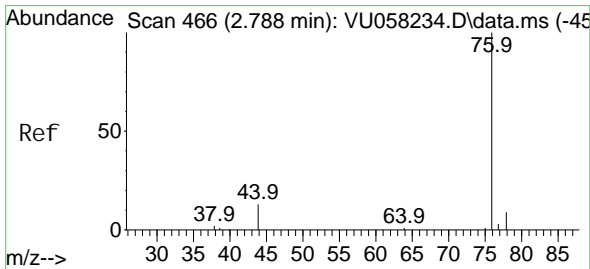
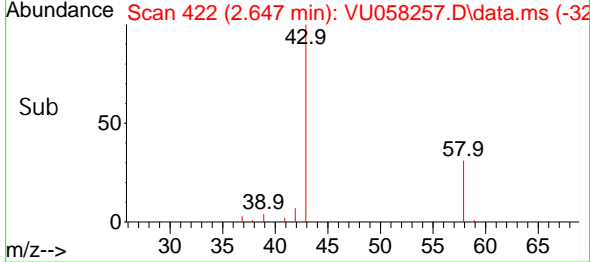
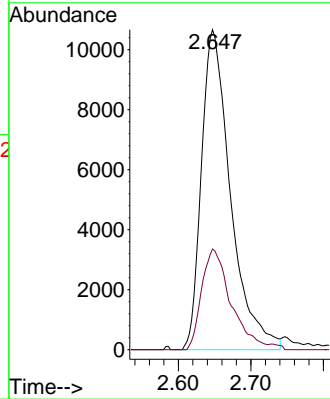


#13  
 Acetone  
 Concen: 42.951 ug/L  
 RT: 2.647 min Scan# 431  
 Delta R.T. 0.000 min  
 Lab File: VU058257.D  
 Acq: 28 Mar 2024 22:10

Instrument : MSVOA\_U  
 ClientSampleId :

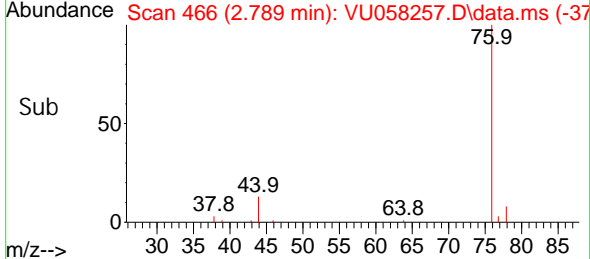
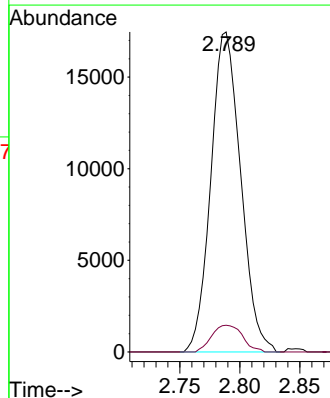
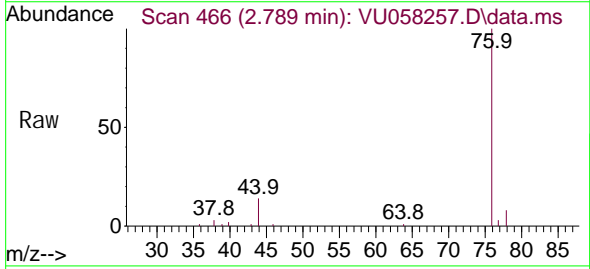


Tgt Ion: 43 Resp: 29723  
 Ion Ratio Lower Upper  
 43 100  
 58 31.5 0.0 64.6

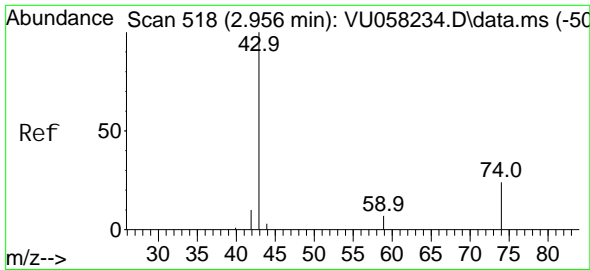


#14  
 Carbon di sul fi de  
 Concen: 3.785 ug/L  
 RT: 2.789 min Scan# 466  
 Delta R.T. 0.000 min  
 Lab File: VU058257.D  
 Acq: 28 Mar 2024 22:10

Tgt Ion: 76 Resp: 30199  
 Ion Ratio Lower Upper  
 76 100  
 78 8.3 7.2 10.8

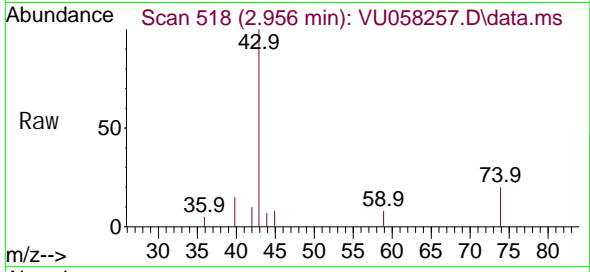




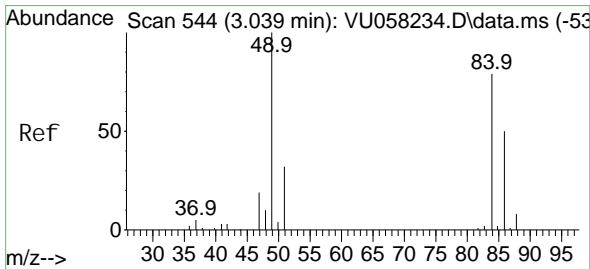
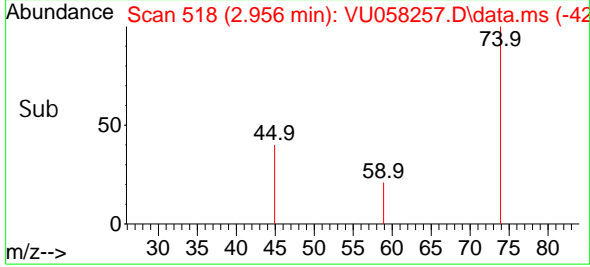
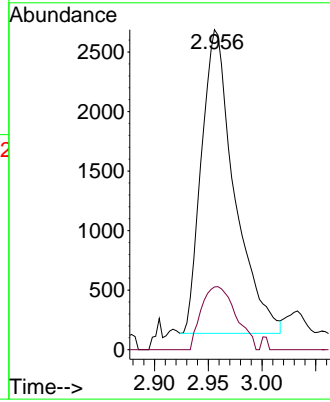


#15  
Methyl Acetate  
Concen: 3.785 ug/L  
RT: 2.956 min Scan# 518  
Delta R.T. 0.000 min  
Lab File: VU058257.D  
Acq: 28 Mar 2024 22:10

Instrument : MSVOA\_U  
ClientSampleId :

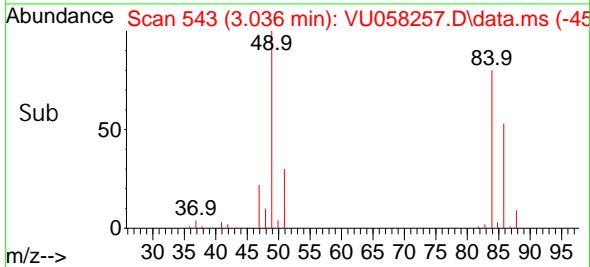
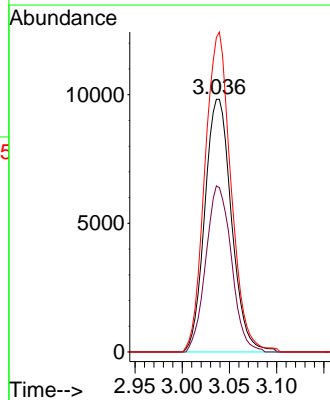
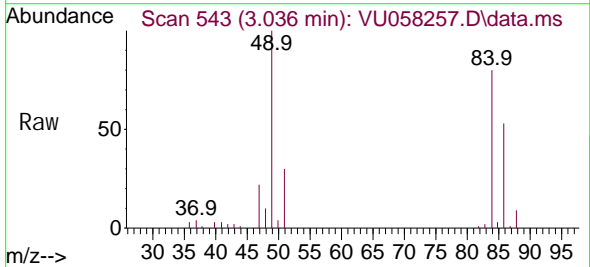


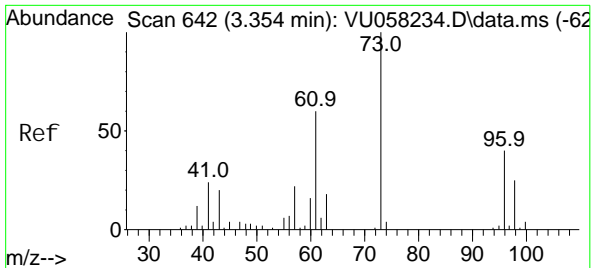
Tgt Ion: 43 Resp: 5437  
Ion Ratio Lower Upper  
43 100  
74 21.7 16.8 25.2



#16  
Methylene chloride  
Concen: 3.811 ug/L  
RT: 3.036 min Scan# 543  
Delta R.T. -0.003 min  
Lab File: VU058257.D  
Acq: 28 Mar 2024 22:10

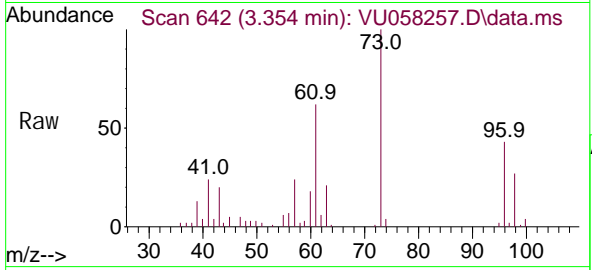
Tgt Ion: 84 Resp: 19283  
Ion Ratio Lower Upper  
84 100  
86 65.7 45.6 84.6  
49 124.4 88.3 163.9



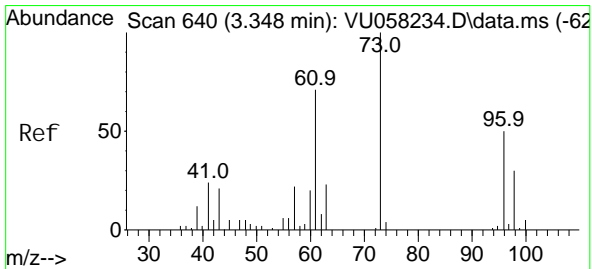
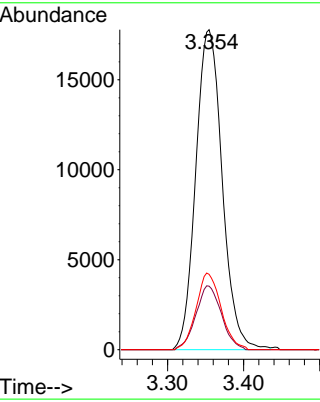
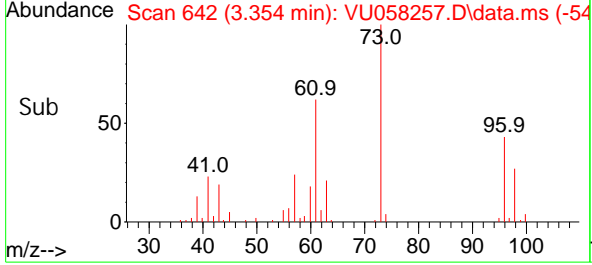


#17  
 Methyl tert-butyl Ether  
 Concen: 4.481 ug/L  
 RT: 3.354 min Scan# 641  
 Delta R.T. 0.000 min  
 Lab File: VU058257.D  
 Acq: 28 Mar 2024 22:10

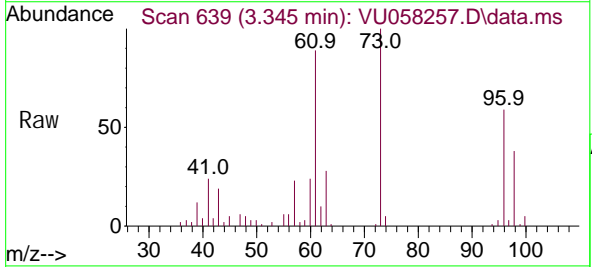
Instrument : MSVOA\_U  
 ClientSampleId :



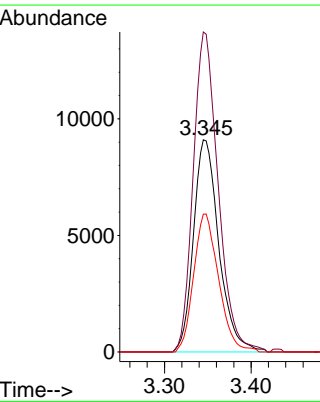
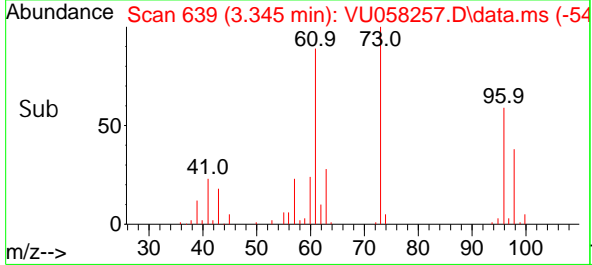
Tgt Ion: 73 Resp: 42941  
 Ion Ratio Lower Upper  
 73 100  
 43 19.3 15.5 23.3  
 57 22.6 18.0 27.0

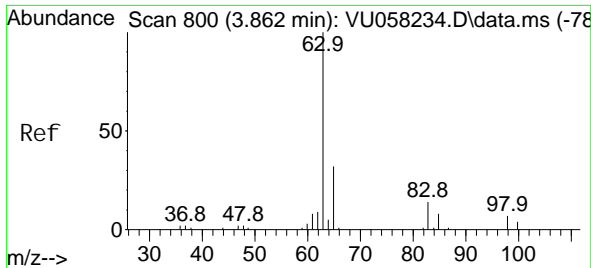


#18  
 trans-1,2-Dichloroethene  
 Concen: 4.973 ug/L  
 RT: 3.345 min Scan# 639  
 Delta R.T. -0.003 min  
 Lab File: VU058257.D  
 Acq: 28 Mar 2024 22:10



Tgt Ion: 96 Resp: 18558  
 Ion Ratio Lower Upper  
 96 100  
 61 150.8 102.5 190.3  
 98 65.0 44.0 81.8



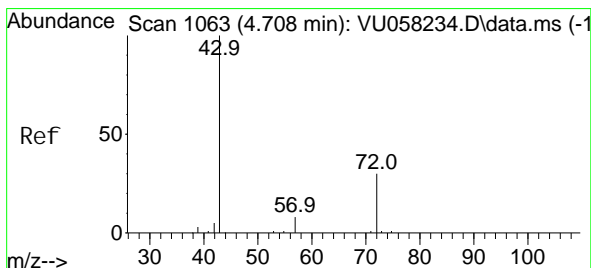
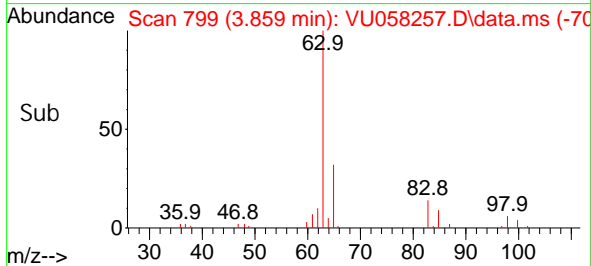
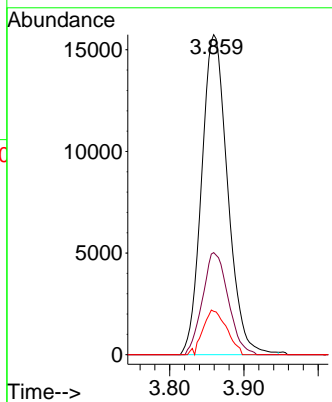
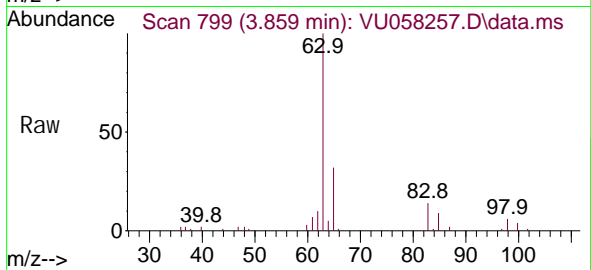


#19  
 1,1-Dichloroethane  
 Concen: 4.565 ug/L  
 RT: 3.859 min Scan# 71  
 Delta R.T. -0.003 min  
 Lab File: VU058257.D  
 Acq: 28 Mar 2024 22:10

Instrument : MSVOA\_U  
 ClientSampleId :

Tgt Ion: 63 Resp: 38272

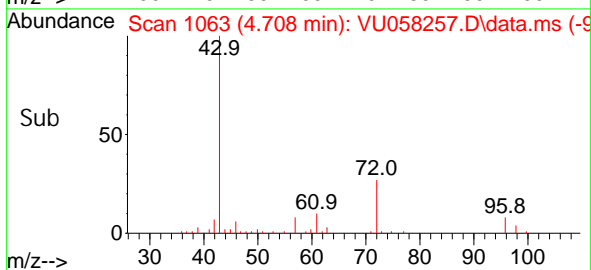
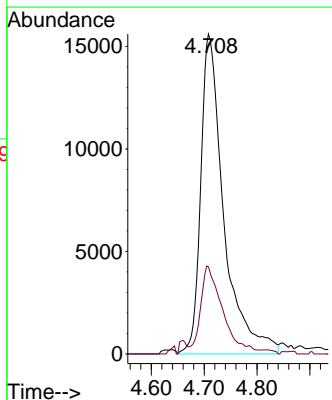
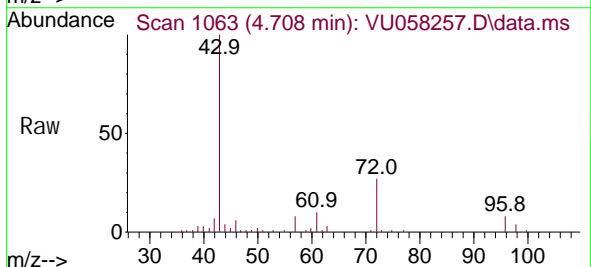
Ion	Ratio	Lower	Upper
63	100		
65	32.6	22.3	41.5
83	13.5	10.0	18.6

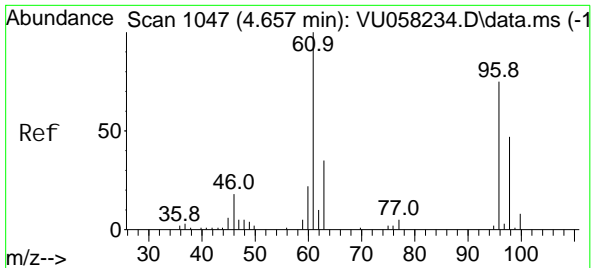


#21  
 2-Butanone  
 Concen: 44.921 ug/L  
 RT: 4.708 min Scan# 1063  
 Delta R.T. 0.000 min  
 Lab File: VU058257.D  
 Acq: 28 Mar 2024 22:10

Tgt Ion: 43 Resp: 47228

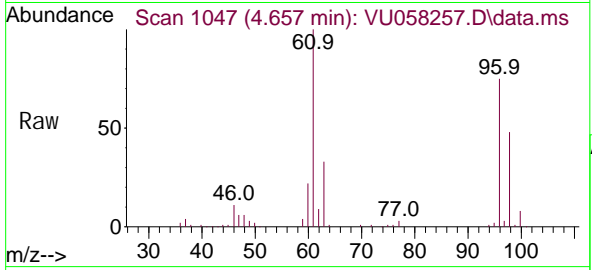
Ion	Ratio	Lower	Upper
43	100		
72	24.4	14.0	41.9





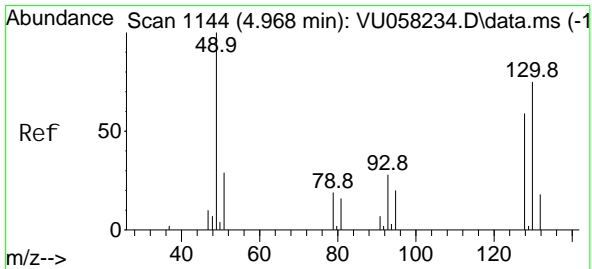
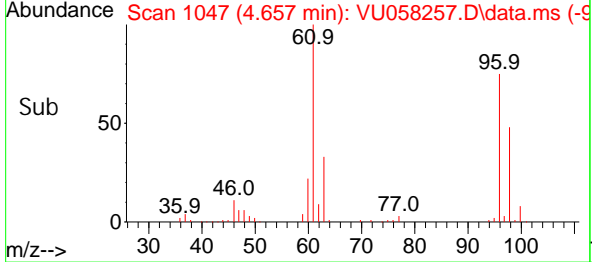
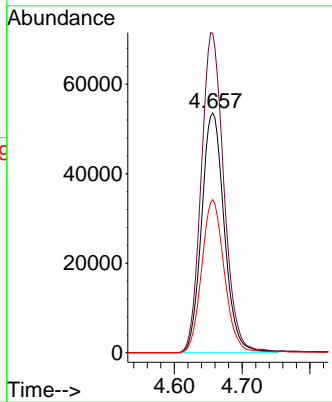
#22  
 cis-1,2-Dichloroethene  
 Concen: 26.984 ug/L  
 RT: 4.657 min Scan# 1047  
 Delta R.T. 0.000 min  
 Lab File: VU058257.D  
 Acq: 28 Mar 2024 22:10

Instrument : MSVOA\_U  
 ClientSampleId :



Tgt Ion: 96 Resp: 124422

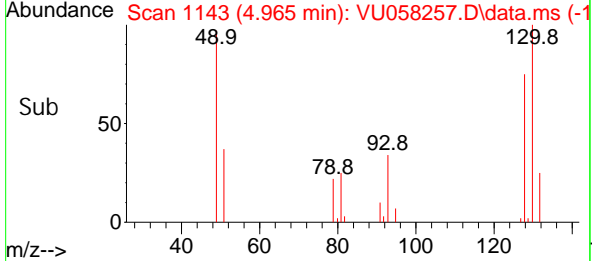
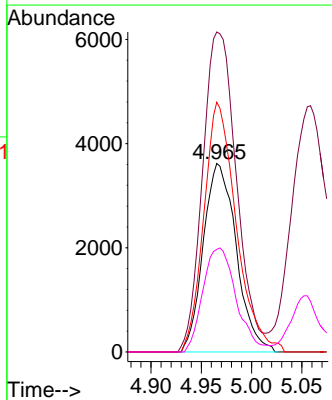
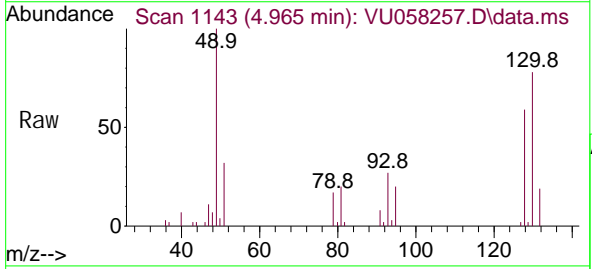
Ion	Ratio	Lower	Upper
96	100		
61	133.2	92.8	172.4
98	63.8	43.2	80.2

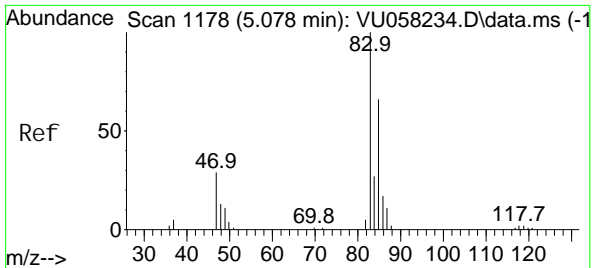


#23  
 Bromochloromethane  
 Concen: 4.795 ug/L  
 RT: 4.965 min Scan# 1143  
 Delta R.T. -0.003 min  
 Lab File: VU058257.D  
 Acq: 28 Mar 2024 22:10

Tgt Ion: 128 Resp: 8251

Ion	Ratio	Lower	Upper
128	100		
49	175.9	125.0	232.2
130	132.5	92.3	171.5
51	54.4	44.7	67.1

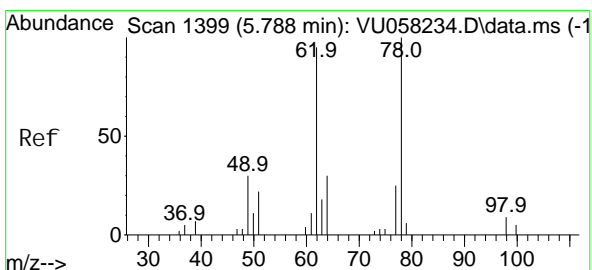
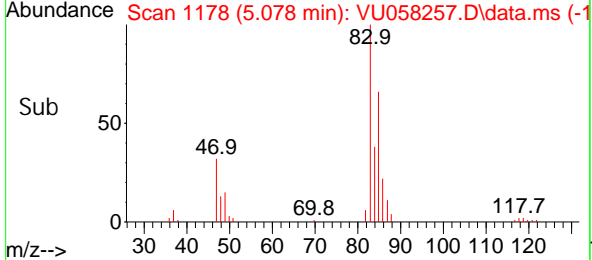
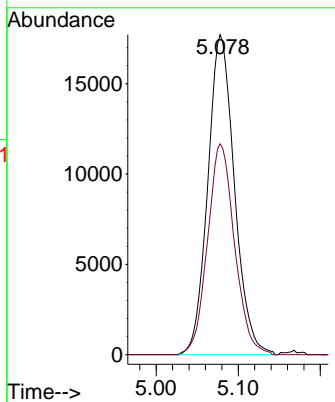
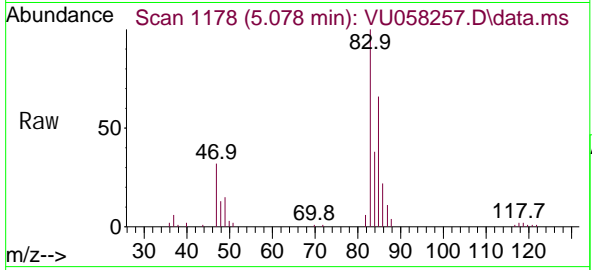




#25  
 Chloroform  
 Concen: 4.554 ug/L  
 RT: 5.078 min Scan# 1178  
 Delta R.T. 0.000 min  
 Lab File: VU058257.D  
 Acq: 28 Mar 2024 22:10

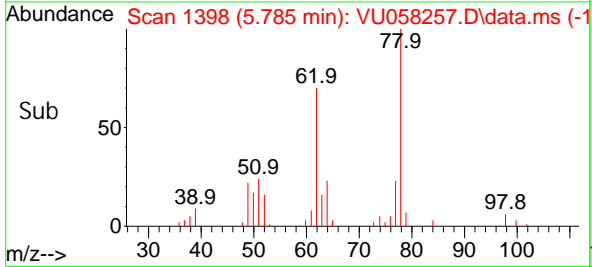
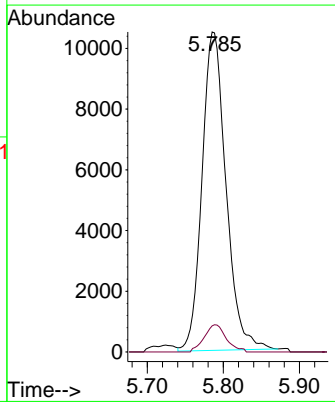
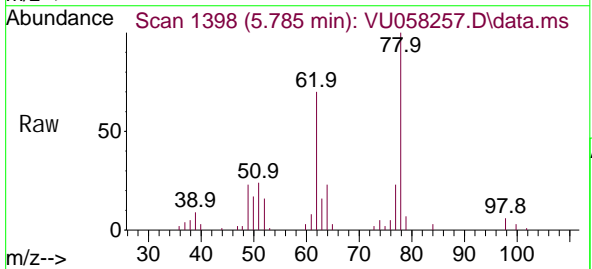
Instrument : MSVOA\_U  
 ClientSampleId :

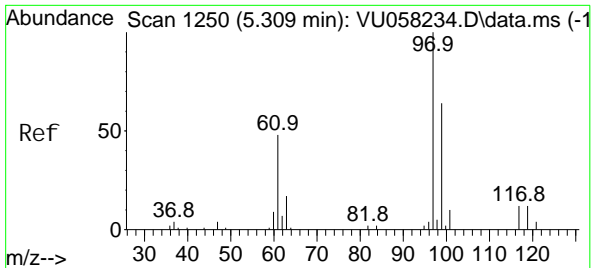
Tgt Ion: 83 Resp: 40044  
 Ion Ratio Lower Upper  
 83 100  
 85 65.9 47.9 88.9



#27  
 1,2-Dichloroethane  
 Concen: 4.601 ug/L  
 RT: 5.785 min Scan# 1398  
 Delta R.T. -0.003 min  
 Lab File: VU058257.D  
 Acq: 28 Mar 2024 22:10

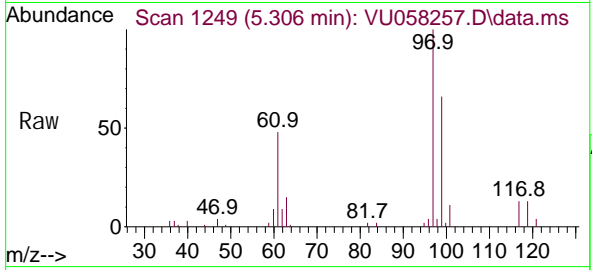
Tgt Ion: 62 Resp: 22970  
 Ion Ratio Lower Upper  
 62 100  
 98 8.2 6.6 10.0



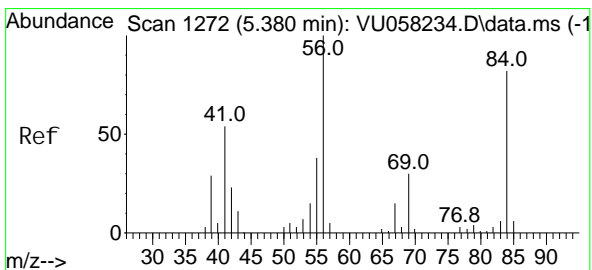
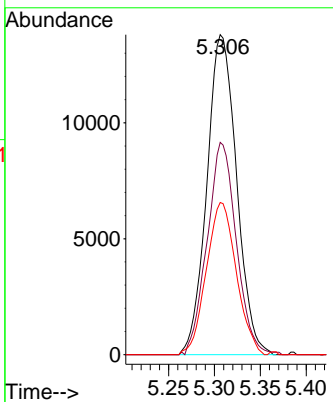
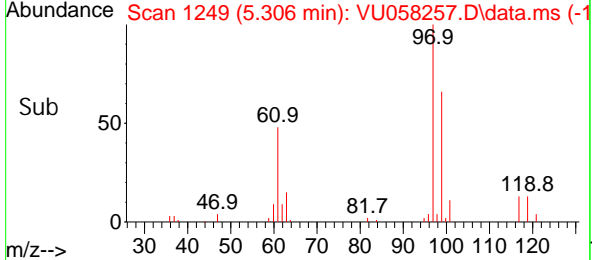


#29  
 1,1,1-Trichloroethane  
 Concen: 4.486 ug/L  
 RT: 5.306 min Scan# 11  
 Delta R.T. -0.003 min  
 Lab File: VU058257.D  
 Acq: 28 Mar 2024 22:10

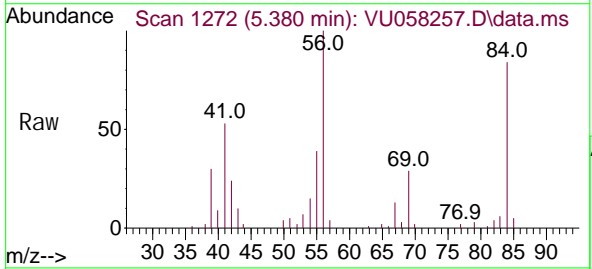
Instrument :  
 MSVOA\_U  
 ClientSampleId :



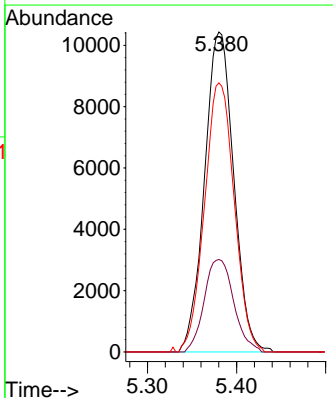
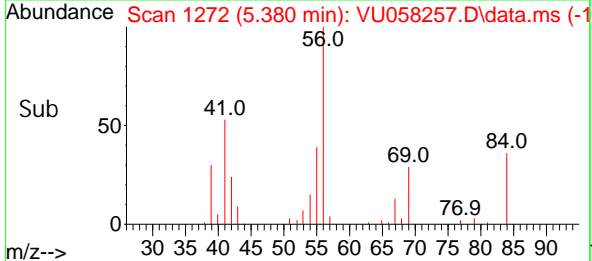
Tgt Ion: 97 Resp: 31149  
 Ion Ratio Lower Upper  
 97 100  
 99 65.1 50.5 75.7  
 61 47.9 36.3 54.5

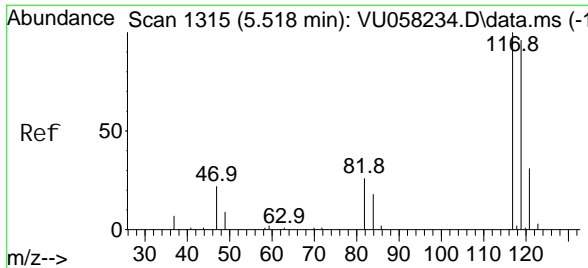


#30  
 Cyclohexane  
 Concen: 3.916 ug/L  
 RT: 5.380 min Scan# 1272  
 Delta R.T. 0.000 min  
 Lab File: VU058257.D  
 Acq: 28 Mar 2024 22:10



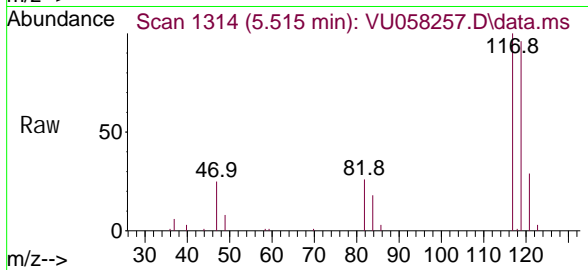
Tgt Ion: 56 Resp: 23750  
 Ion Ratio Lower Upper  
 56 100  
 69 29.2 24.2 36.2  
 84 85.7 69.7 104.5



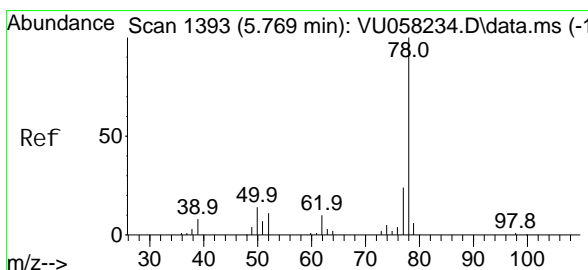
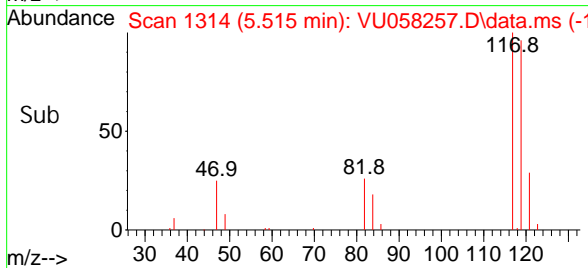
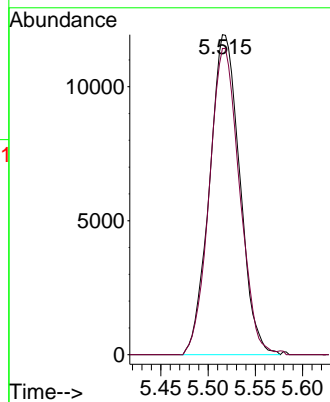


#31  
 Carbon tetrachloride  
 Concen: 4.487 ug/L  
 RT: 5.515 min Scan# 1314  
 Delta R.T. -0.003 min  
 Lab File: VU058257.D  
 Acq: 28 Mar 2024 22:10

Instrument :  
 MSVOA\_U  
 ClientSampleId :

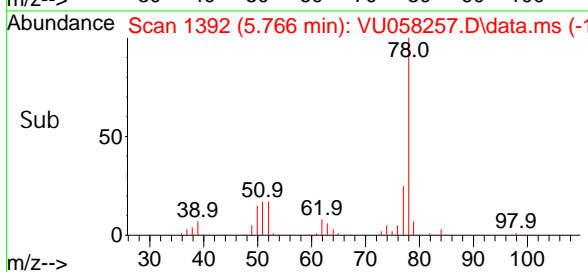
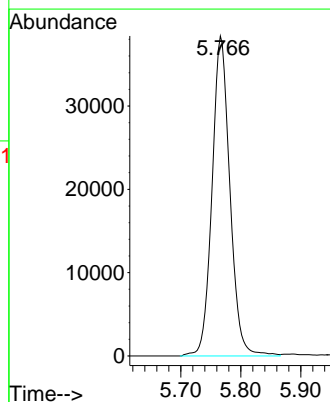
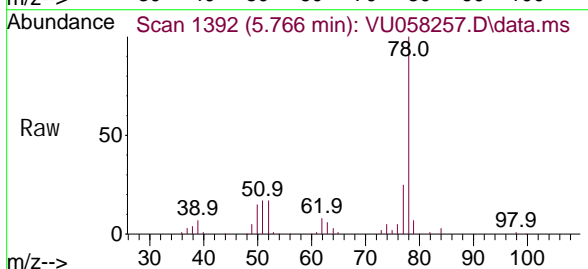


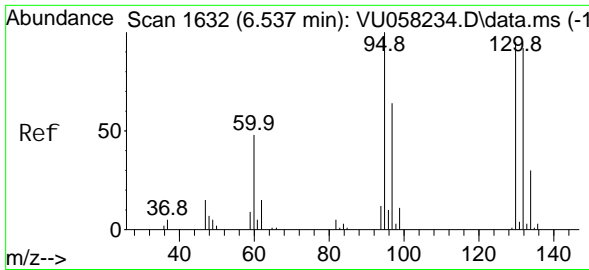
Tgt Ion: 117 Resp: 26519  
 Ion Ratio Lower Upper  
 117 100  
 119 95.9 78.1 117.1



#33  
 Benzene  
 Concen: 4.502 ug/L  
 RT: 5.766 min Scan# 1392  
 Delta R.T. -0.003 min  
 Lab File: VU058257.D  
 Acq: 28 Mar 2024 22:10

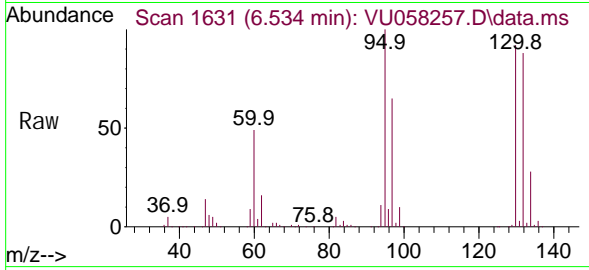
Tgt Ion: 78 Resp: 79408



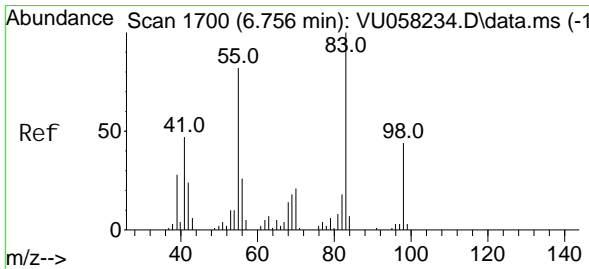
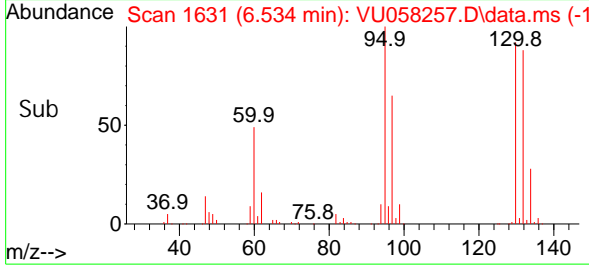
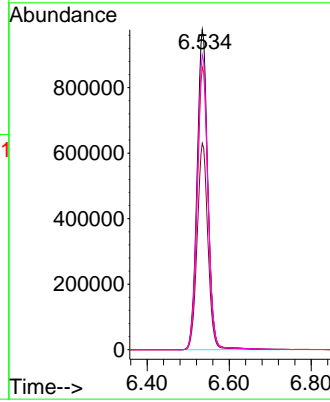


#34  
 Trichloroethene  
 Concen: 387.050 ug/L  
 RT: 6.534 min Scan# 1631  
 Delta R.T. -0.003 min  
 Lab File: VU058257.D  
 Acq: 28 Mar 2024 22:10

Instrument : MSVOA\_U  
 ClientSampleId :

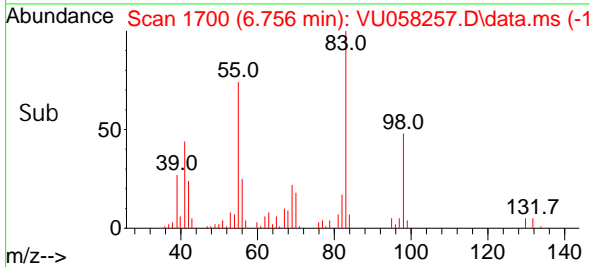
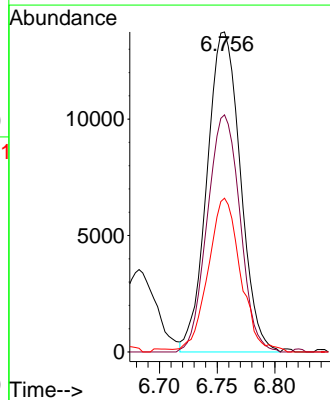
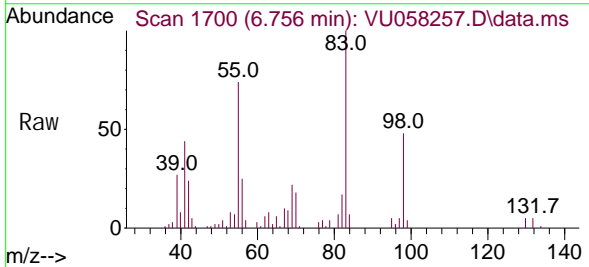


Tgt Ion: 95 Resp: 1778556  
 Ion Ratio Lower Upper  
 95 100  
 97 64.5 47.7 88.7  
 132 88.3 63.6 118.2  
 130 92.1 65.1 120.9

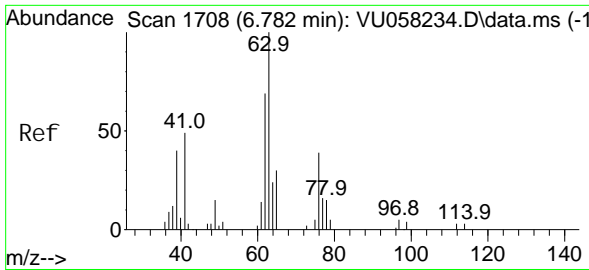


#35  
 Methyl cycl ohexane  
 Concen: 4.313 ug/L  
 RT: 6.756 min Scan# 1700  
 Delta R.T. 0.000 min  
 Lab File: VU058257.D  
 Acq: 28 Mar 2024 22:10

Tgt Ion: 83 Resp: 27640  
 Ion Ratio Lower Upper  
 83 100  
 55 72.7 62.7 94.1  
 98 47.0 37.3 55.9

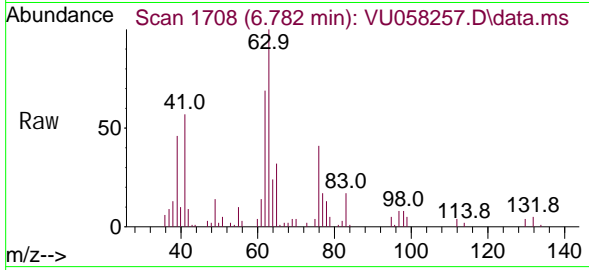




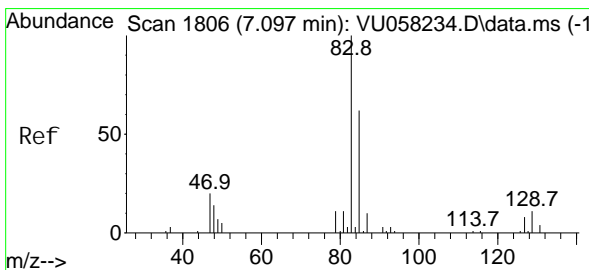
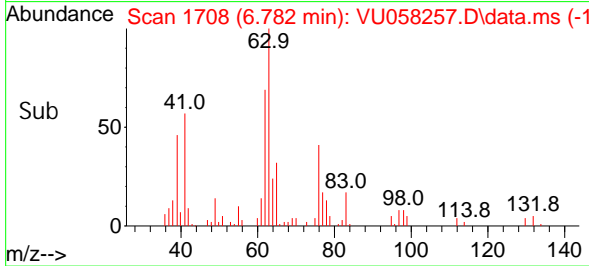
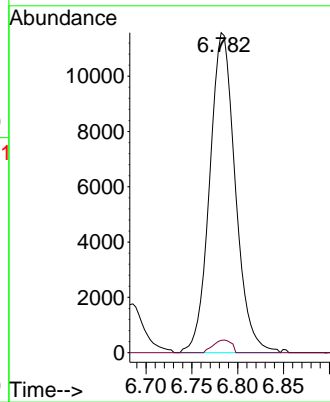


#37  
 1, 2-Di chl oropropane  
 Concen: 4.579 ug/L  
 RT: 6.782 min Scan# 1708  
 Delta R.T. 0.000 min  
 Lab File: VU058257.D  
 Acq: 28 Mar 2024 22:10

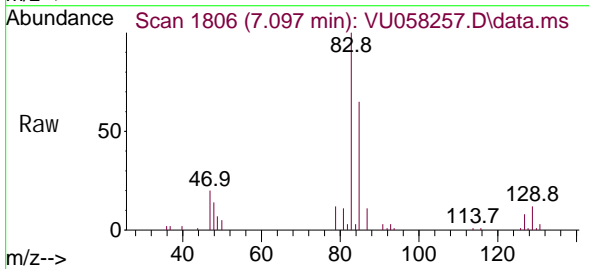
Instrument : MSVOA\_U  
 ClientSampleId :



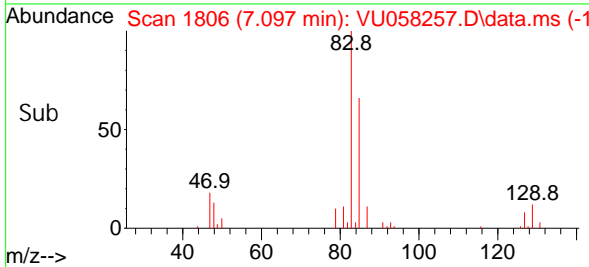
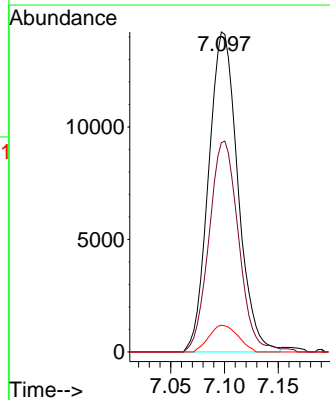
Tgt Ion: 63 Resp: 22563  
 Ion Ratio Lower Upper  
 63 100  
 112 2.8 2.7 4.1

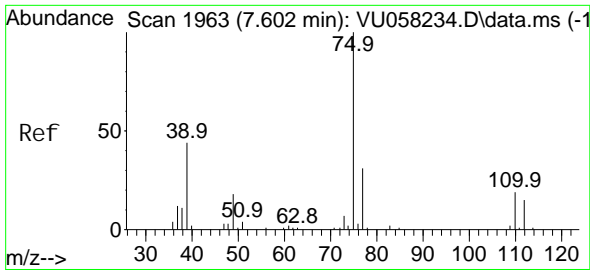


#38  
 Bromodi chl oromethane  
 Concen: 4.766 ug/L  
 RT: 7.097 min Scan# 1806  
 Delta R.T. 0.000 min  
 Lab File: VU058257.D  
 Acq: 28 Mar 2024 22:10



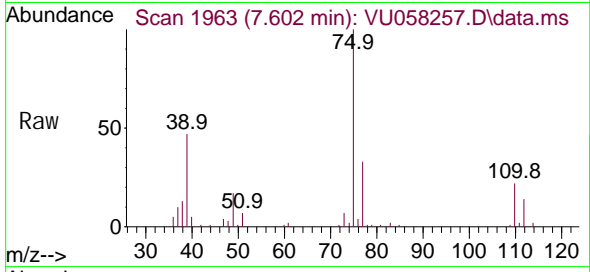
Tgt Ion: 83 Resp: 26917  
 Ion Ratio Lower Upper  
 83 100  
 85 65.4 45.6 84.8  
 127 8.3 7.1 10.7



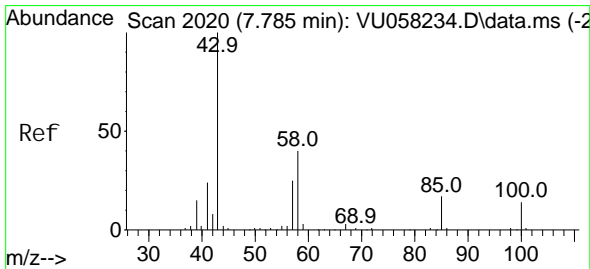
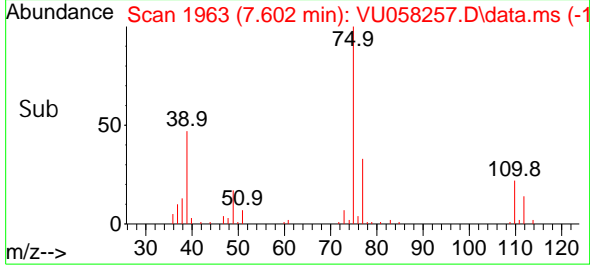
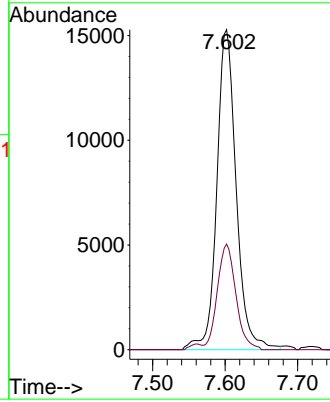


#39  
 ci s-1, 3-Di chl oroprene  
 Concen: 4.539 ug/L  
 RT: 7.602 min Scan# 1963  
 Delta R.T. 0.000 min  
 Lab File: VU058257.D  
 Acq: 28 Mar 2024 22:10

Instrument : MSVOA\_U  
 ClientSampleId :

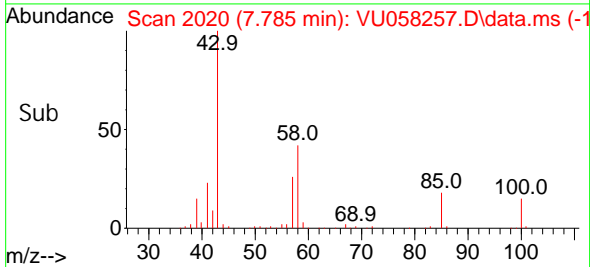
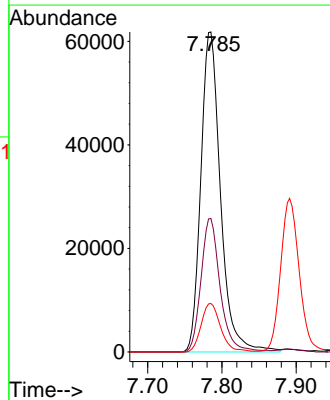
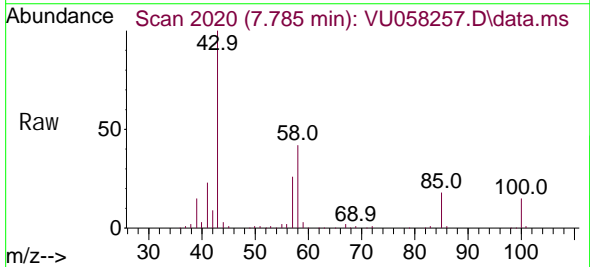


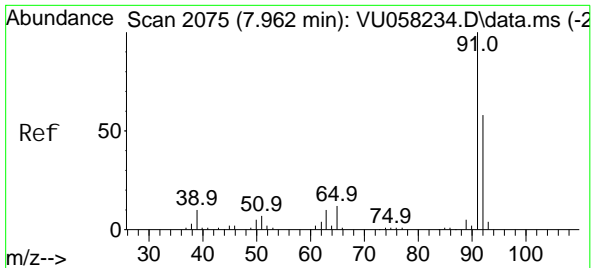
Tgt Ion: 75 Resp: 28362  
 Ion Ratio Lower Upper  
 75 100  
 77 33.0 21.4 39.8



#40  
 4-Methyl -2-pentanone  
 Concen: 45.606 ug/L  
 RT: 7.785 min Scan# 2020  
 Delta R.T. 0.000 min  
 Lab File: VU058257.D  
 Acq: 28 Mar 2024 22:10

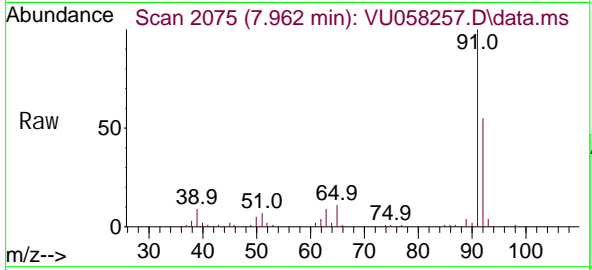
Tgt Ion: 43 Resp: 113623  
 Ion Ratio Lower Upper  
 43 100  
 58 40.6 33.2 49.8  
 100 15.1 11.5 17.3



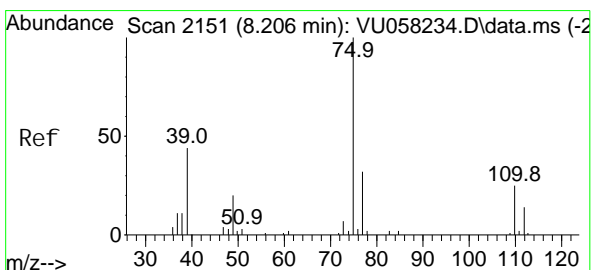
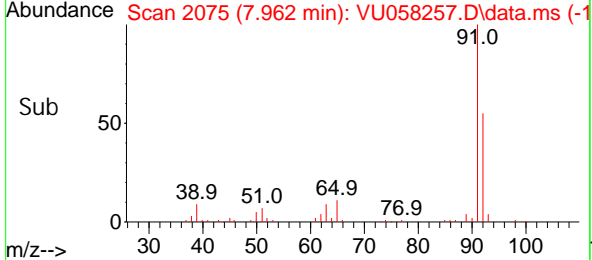
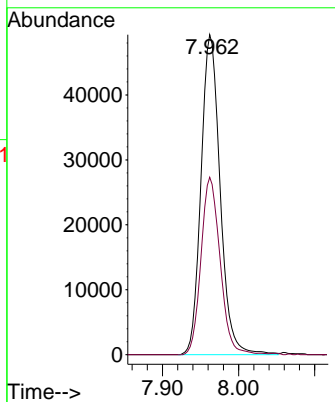


#42  
 Tol uene  
 Concen: 4.623 ug/L  
 RT: 7.962 min Scan# 2075  
 Delta R.T. 0.000 min  
 Lab File: VU058257.D  
 Acq: 28 Mar 2024 22:10

Instrument : MSVOA\_U  
 ClientSampleId :

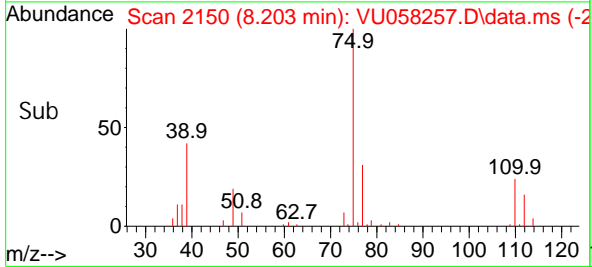
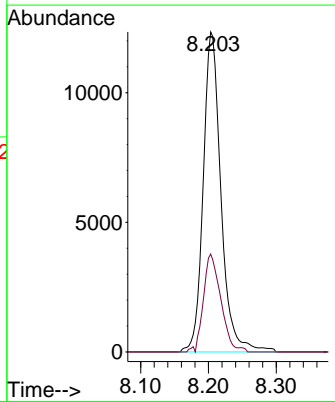
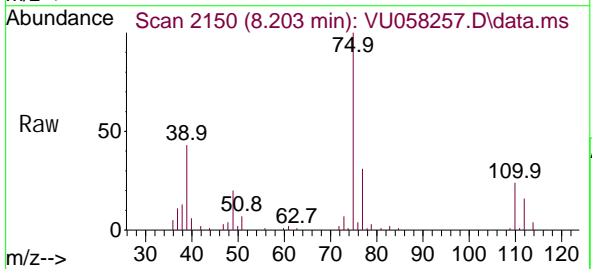


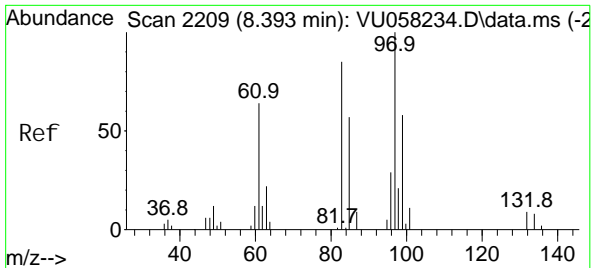
Tgt Ion: 91 Resp: 86160  
 Ion Ratio Lower Upper  
 91 100  
 92 55.4 40.7 75.5



#44  
 trans-1,3-Di chl oroprene  
 Concen: 4.582 ug/L  
 RT: 8.203 min Scan# 2150  
 Delta R.T. -0.003 min  
 Lab File: VU058257.D  
 Acq: 28 Mar 2024 22:10

Tgt Ion: 75 Resp: 22530  
 Ion Ratio Lower Upper  
 75 100  
 77 30.6 21.7 40.3



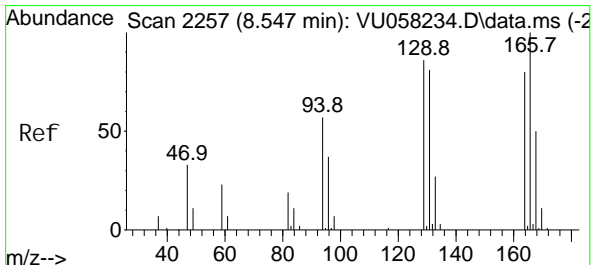
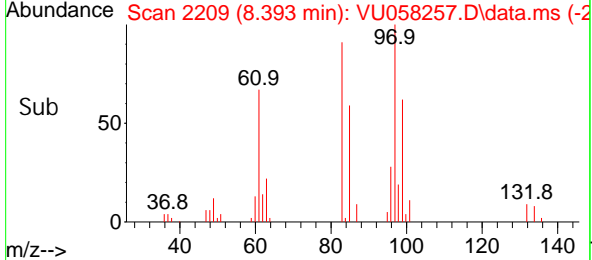
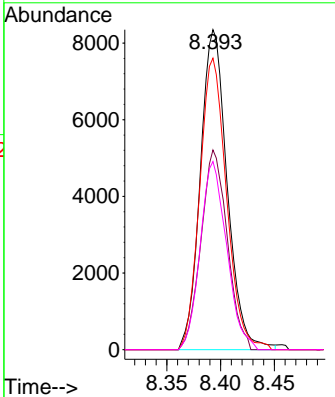
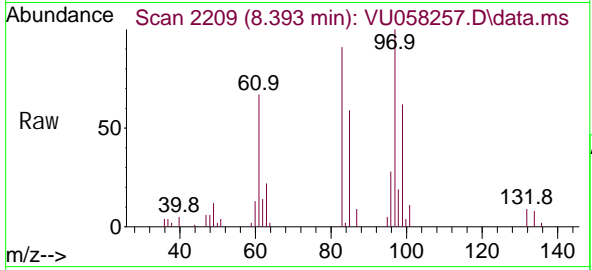


#45  
 1, 1, 2-Tri chloroethane  
 Concen: 4.674 ug/L  
 RT: 8.393 min Scan# 2209  
 Delta R.T. 0.000 min  
 Lab File: VU058257.D  
 Acq: 28 Mar 2024 22:10

Instrument : MSVOA\_U  
 ClientSampleId :

Tgt Ion: 97 Resp: 14507

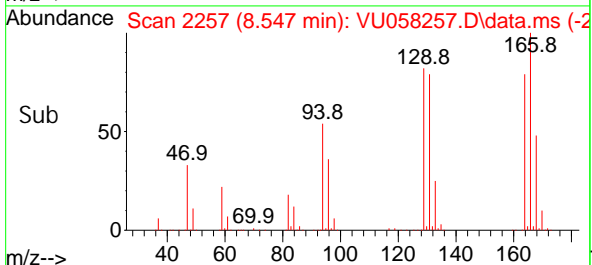
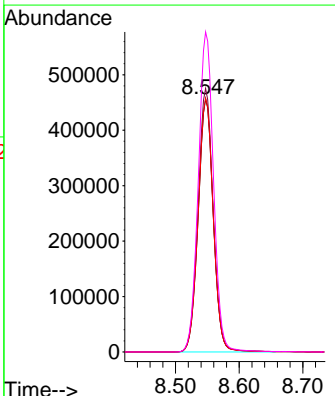
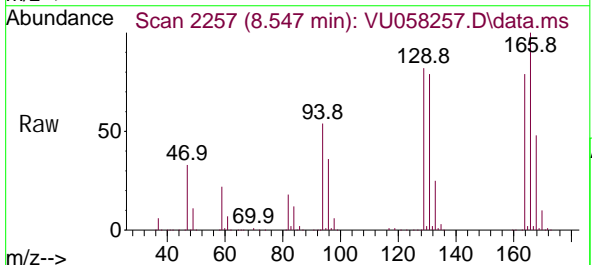
Ion	Ratio	Lower	Upper
97	100		
99	62.4	44.5	82.7
83	91.1	64.1	119.1
85	58.8	39.5	73.4

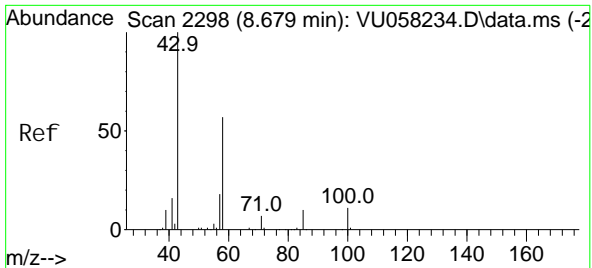


#47  
 Tetrachloroethene  
 Concen: 245.610 ug/L  
 RT: 8.547 min Scan# 2257  
 Delta R.T. 0.000 min  
 Lab File: VU058257.D  
 Acq: 28 Mar 2024 22:10

Tgt Ion: 164 Resp: 755950

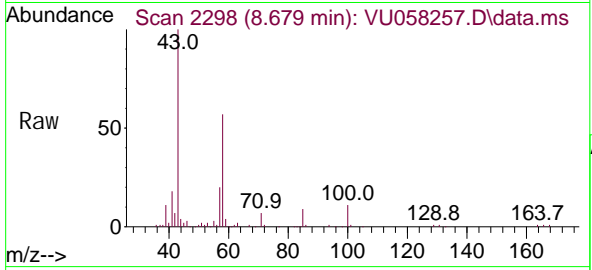
Ion	Ratio	Lower	Upper
164	100		
129	104.2	71.3	132.3
131	100.2	70.8	131.4
166	126.5	90.9	168.9





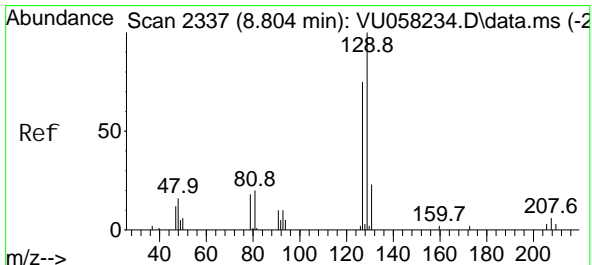
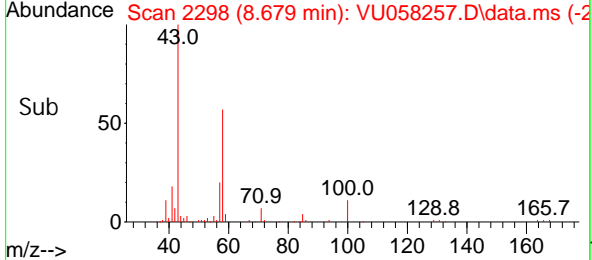
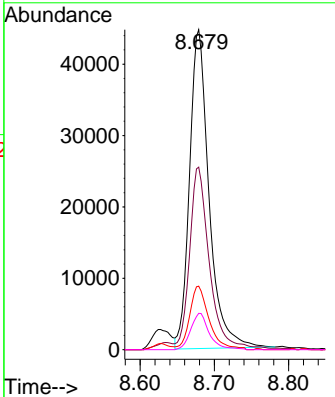
#48  
 2-Hexanone  
 Concen: 44.963 ug/L  
 RT: 8.679 min Scan# 21  
 Delta R.T. 0.000 min  
 Lab File: VU058257.D  
 Acq: 28 Mar 2024 22:10

Instrument : MSVOA\_U  
 ClientSampleId :

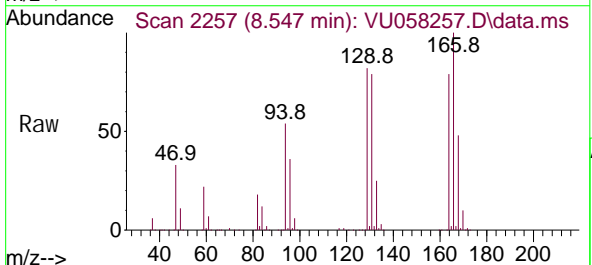


Tgt Ion: 43 Resp: 81579

Ion	Ratio	Lower	Upper
43	100		
58	57.4	48.3	72.5
57	19.9	16.3	24.5
100	10.9	9.2	13.8

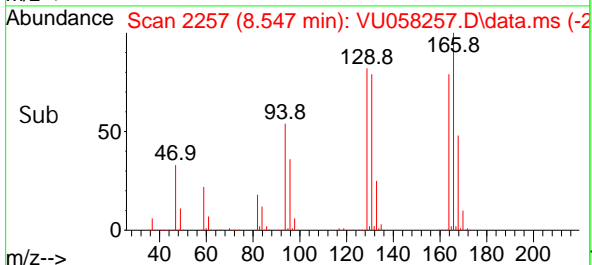
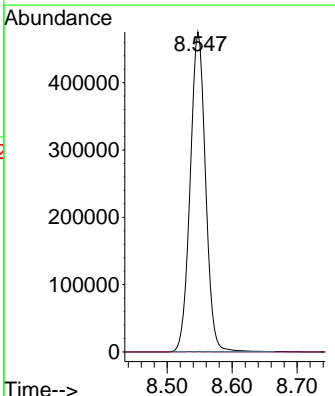


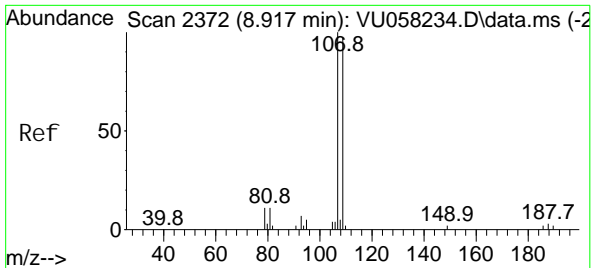
#49  
 Di bromochloromethane  
 Concen: 229.793 ug/L  
 RT: 8.547 min Scan# 2257  
 Delta R.T. -0.257 min  
 Lab File: VU058257.D  
 Acq: 28 Mar 2024 22:10



Tgt Ion: 129 Resp: 780355

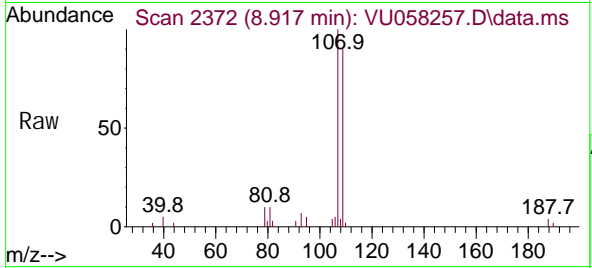
Ion	Ratio	Lower	Upper
129	100		
127	0.1	55.7	103.5#





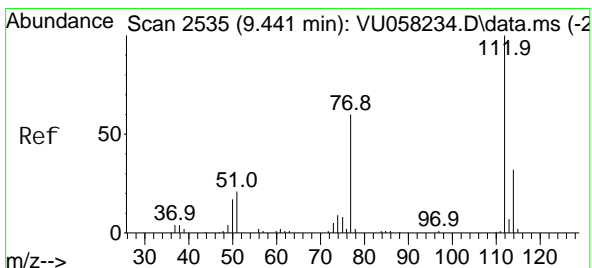
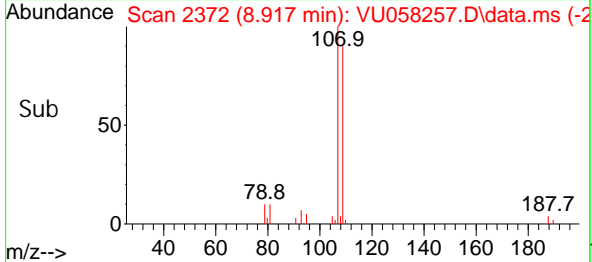
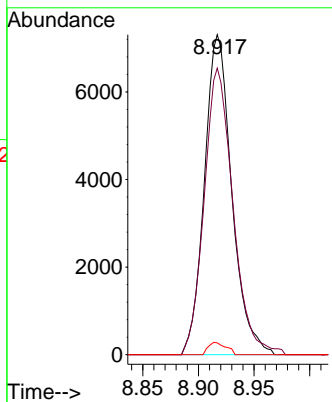
#50  
 1, 2-Di bromoethane  
 Concen: 4.677 ug/L  
 RT: 8.917 min Scan# 2372  
 Delta R.T. 0.000 min  
 Lab File: VU058257.D  
 Acq: 28 Mar 2024 22: 10

Instrument : MSVOA\_U  
 ClientSampleId :



Tgt Ion: 107 Resp: 12494

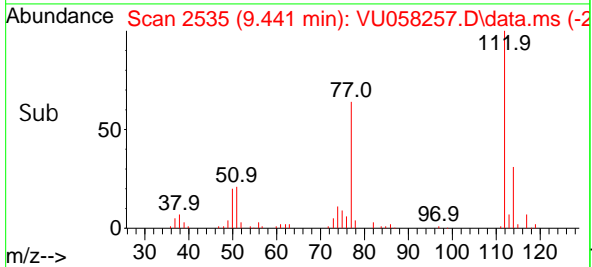
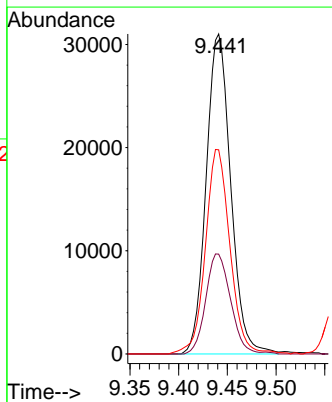
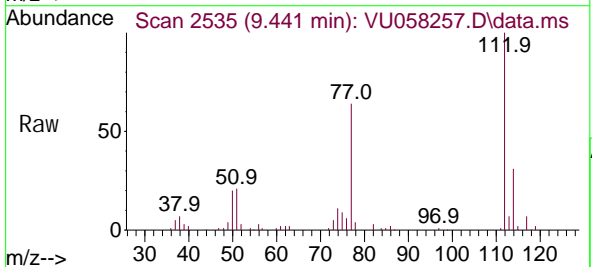
Ion	Ratio	Lower	Upper
107	100		
109	89.6	67.8	125.8
188	3.7	2.5	3.7#

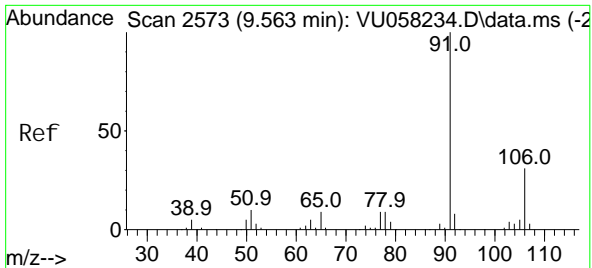


#51  
 Chlorobenzene  
 Concen: 4.527 ug/L  
 RT: 9.441 min Scan# 2535  
 Delta R.T. 0.000 min  
 Lab File: VU058257.D  
 Acq: 28 Mar 2024 22: 10

Tgt Ion: 112 Resp: 54354

Ion	Ratio	Lower	Upper
112	100		
114	31.2	22.7	42.3
77	63.8	48.9	73.3

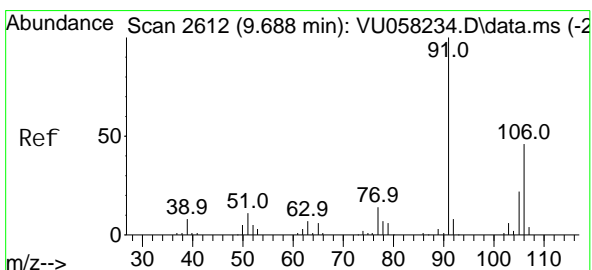
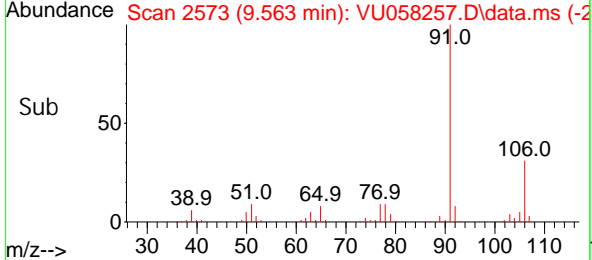
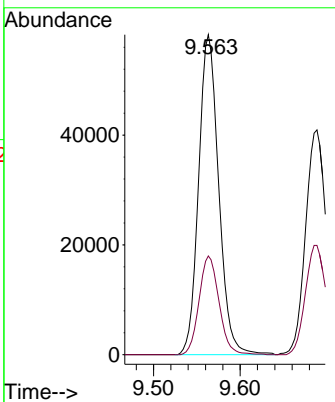
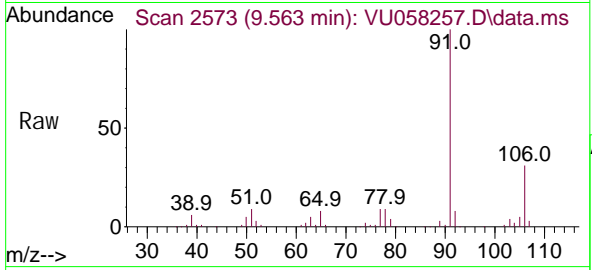




#52  
 Ethyl benzene  
 Concen: 4.509 ug/L  
 RT: 9.563 min Scan# 21  
 Delta R.T. 0.000 min  
 Lab File: VU058257.D  
 Acq: 28 Mar 2024 22:10

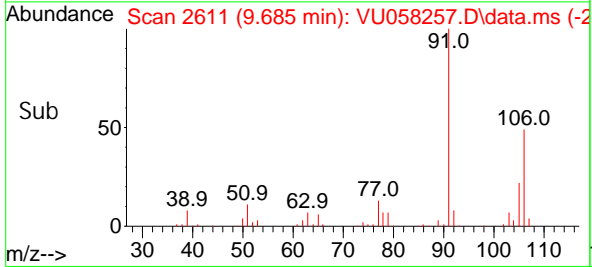
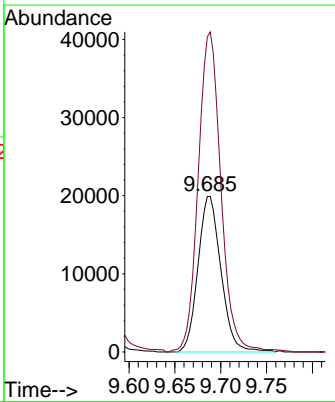
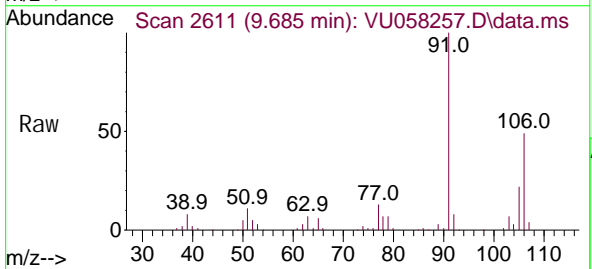
Instrument : MSVOA\_U  
 ClientSampleId :

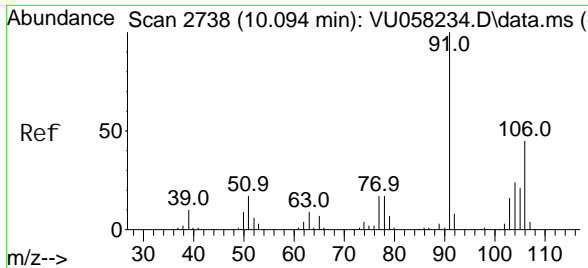
Tgt Ion: 91 Resp: 93835  
 Ion Ratio Lower Upper  
 91 100  
 106 30.8 20.6 38.2



#53  
 m, p-Xyl ene  
 Concen: 4.677 ug/L  
 RT: 9.685 min Scan# 2611  
 Delta R.T. -0.003 min  
 Lab File: VU058257.D  
 Acq: 28 Mar 2024 22:10

Tgt Ion: 106 Resp: 34680  
 Ion Ratio Lower Upper  
 106 100  
 91 202.6 151.0 280.4

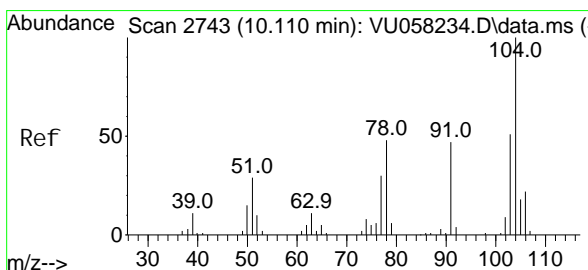
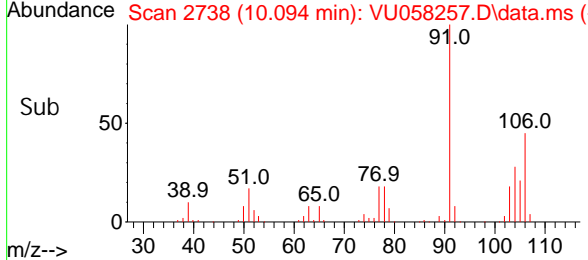
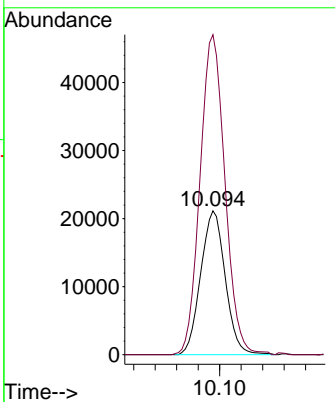
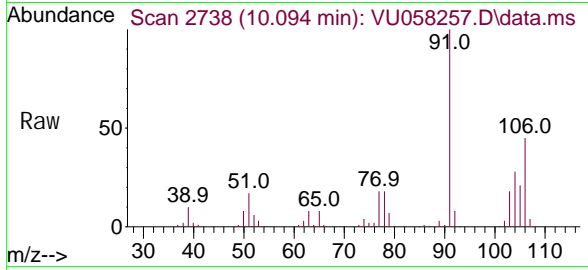




#54  
 o-Xyl ene  
 Concen: 4.478 ug/L  
 RT: 10.094 min Scan# 2738  
 Delta R.T. 0.000 min  
 Lab File: VU058257.D  
 Acq: 28 Mar 2024 22:10

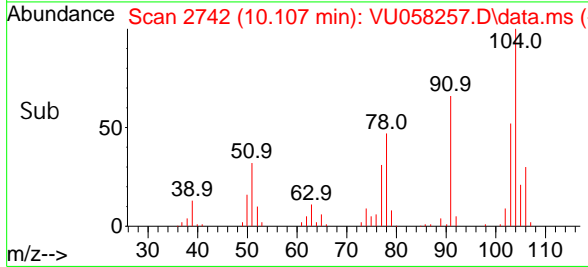
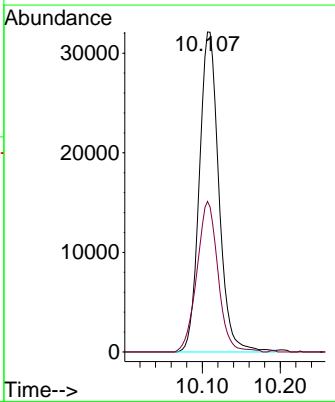
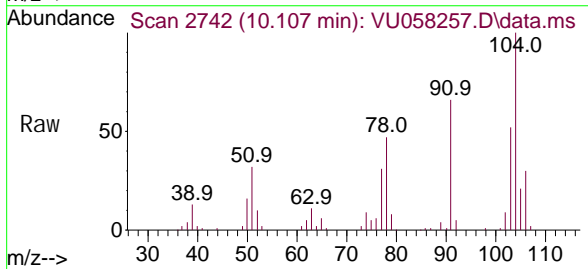
Instrument : MSVOA\_U  
 ClientSampleId :

Tgt Ion: 106 Resp: 33514  
 Ion Ratio Lower Upper  
 106 100  
 91 222.4 154.3 286.7

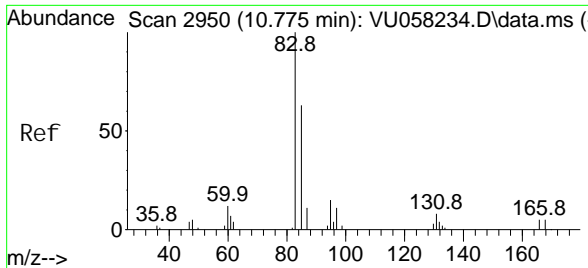


#55  
 Styrene  
 Concen: 4.738 ug/L  
 RT: 10.107 min Scan# 2742  
 Delta R.T. -0.003 min  
 Lab File: VU058257.D  
 Acq: 28 Mar 2024 22:10

Tgt Ion: 104 Resp: 55990  
 Ion Ratio Lower Upper  
 104 100  
 78 47.0 34.5 64.1

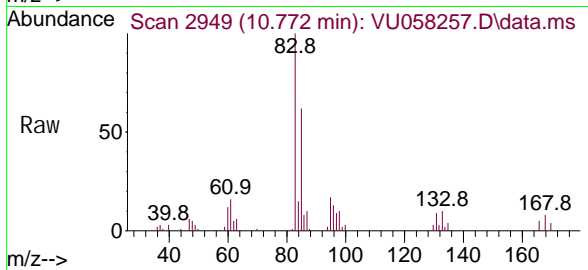




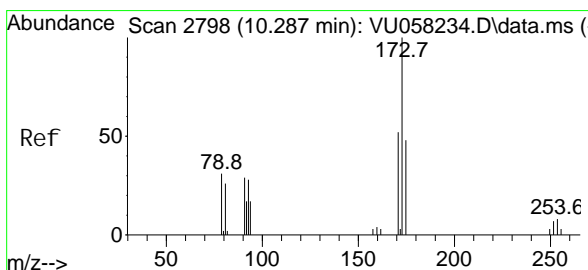
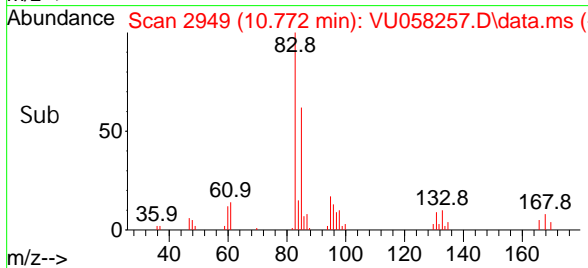
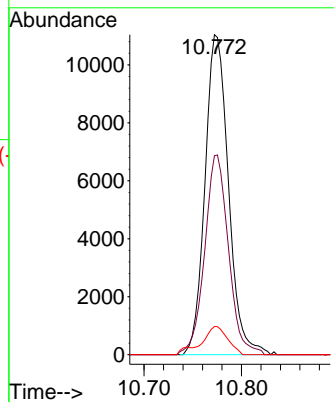


#57  
 1, 1, 2, 2-Tetrachloroethane  
 Concen: 5.060 ug/L  
 RT: 10.772 min Scan# 2949  
 Delta R.T. -0.003 min  
 Lab File: VU058257.D  
 Acq: 28 Mar 2024 22:10

Instrument : MSVOA\_U  
 ClientSampleId :

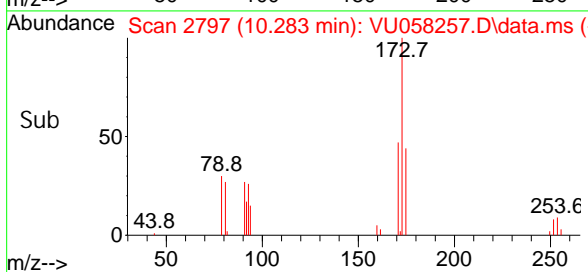
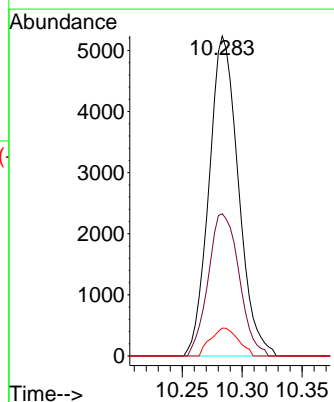
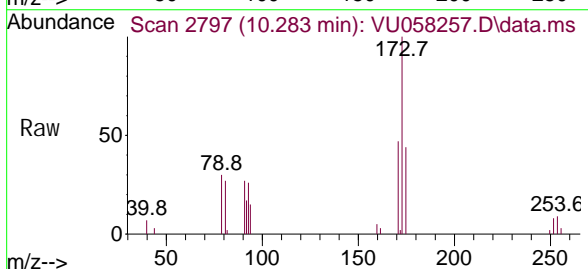


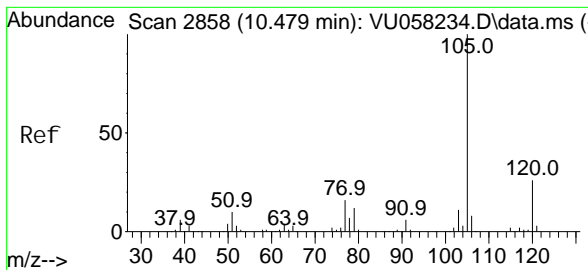
Tgt Ion: 83 Resp: 18510  
 Ion Ratio Lower Upper  
 83 100  
 85 62.2 44.7 82.9  
 131 8.8 7.0 10.6



#59  
 Bromoform  
 Concen: 5.048 ug/L  
 RT: 10.283 min Scan# 2797  
 Delta R.T. -0.003 min  
 Lab File: VU058257.D  
 Acq: 28 Mar 2024 22:10

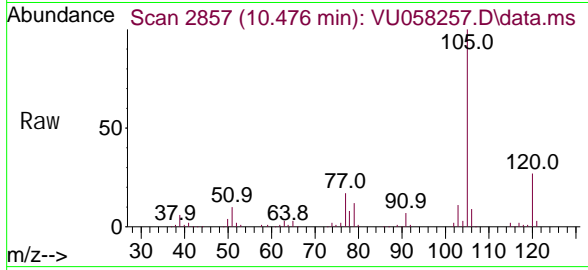
Tgt Ion: 173 Resp: 8906  
 Ion Ratio Lower Upper  
 173 100  
 175 46.8 40.9 61.3  
 254 8.2 5.8 8.8



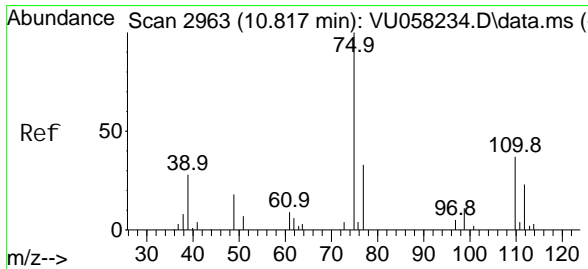
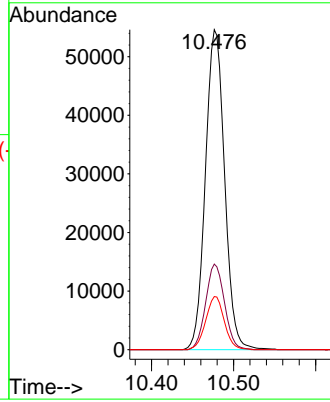
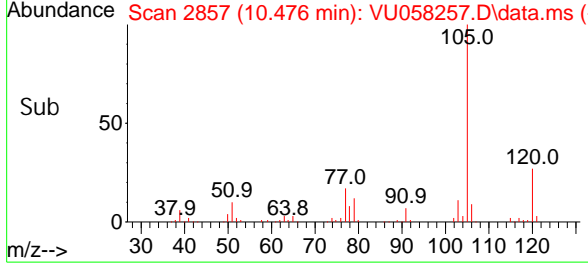


#60  
 Isopropyl benzene  
 Concen: 4.394 ug/L  
 RT: 10.476 min Scan# 2857  
 Delta R.T. -0.003 min  
 Lab File: VU058257.D  
 Acq: 28 Mar 2024 22:10

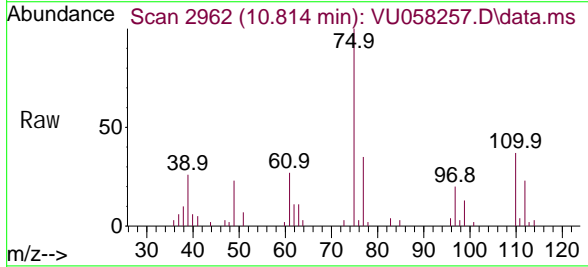
Instrument : MSVOA\_U  
 ClientSampleId :



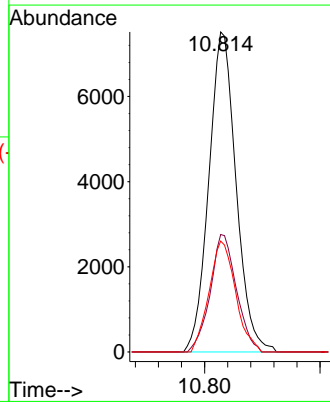
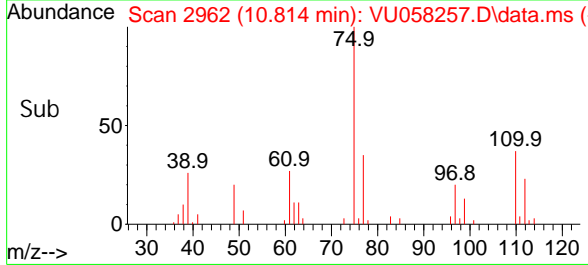
Tgt Ion: 105 Resp: 88675  
 Ion Ratio Lower Upper  
 105 100  
 120 26.2 20.5 30.7  
 77 16.1 13.2 19.8

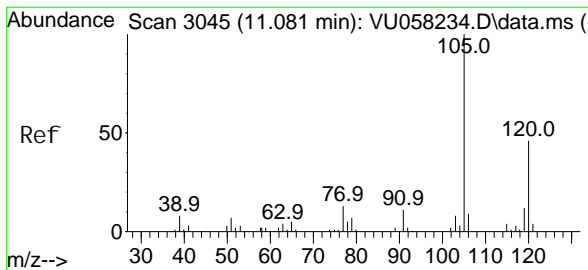


#61  
 1,2,3-Trichloropropane  
 Concen: 4.377 ug/L  
 RT: 10.814 min Scan# 2962  
 Delta R.T. -0.003 min  
 Lab File: VU058257.D  
 Acq: 28 Mar 2024 22:10



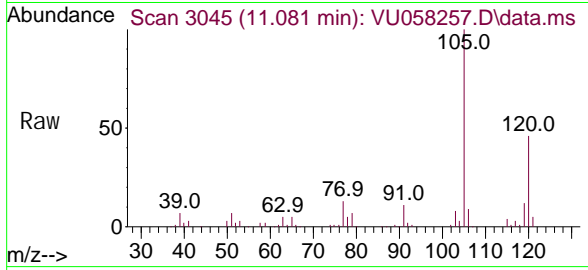
Tgt Ion: 75 Resp: 12313  
 Ion Ratio Lower Upper  
 75 100  
 110 35.2 28.1 42.1  
 77 33.7 25.1 37.7



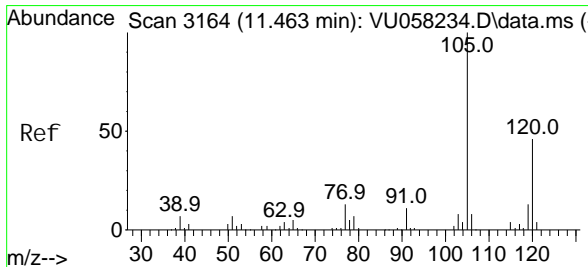
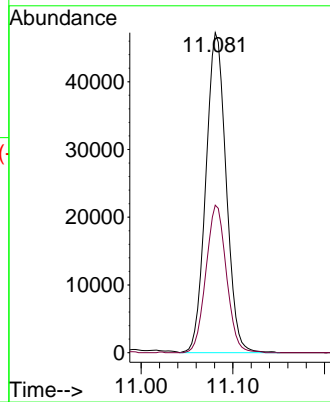
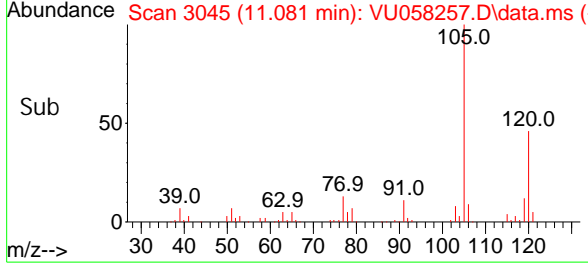


#62  
 1, 3, 5-Tri methyl benzene  
 Concen: 4.283 ug/L  
 RT: 11.081 min Scan# 3045  
 Delta R.T. 0.000 min  
 Lab File: VU058257.D  
 Acq: 28 Mar 2024 22:10

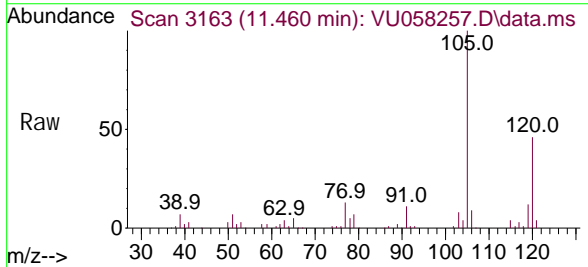
Instrument : MSVOA\_U  
 ClientSampleId :



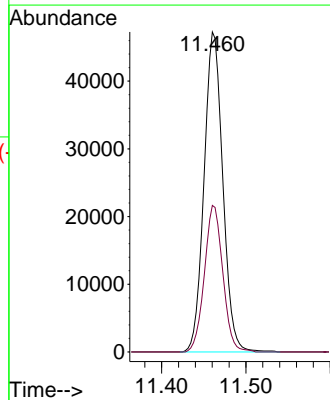
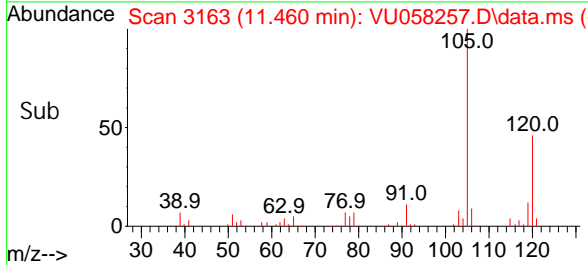
Tgt Ion: 105 Resp: 72542  
 Ion Ratio Lower Upper  
 105 100  
 120 46.6 36.7 55.1

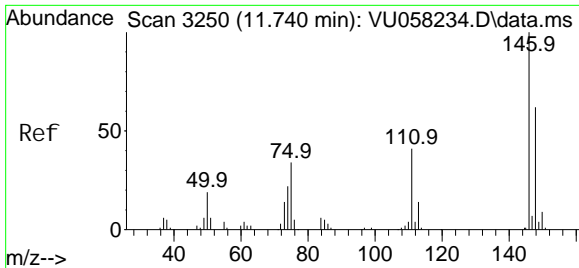


#63  
 1, 2, 4-Tri methyl benzene  
 Concen: 4.356 ug/L  
 RT: 11.460 min Scan# 3163  
 Delta R.T. -0.003 min  
 Lab File: VU058257.D  
 Acq: 28 Mar 2024 22:10



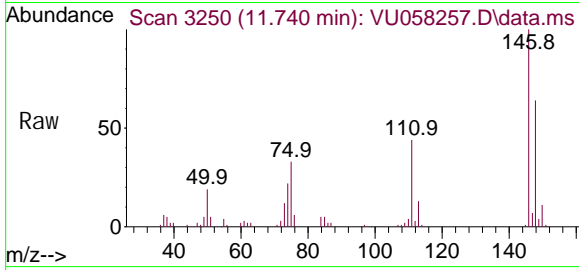
Tgt Ion: 105 Resp: 73269  
 Ion Ratio Lower Upper  
 105 100  
 120 45.0 35.9 53.9



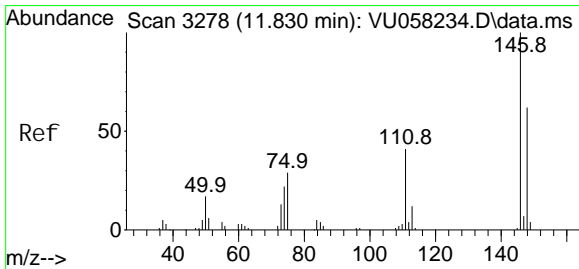
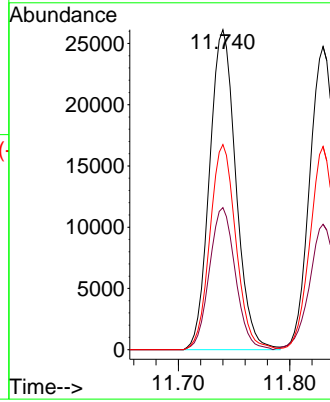
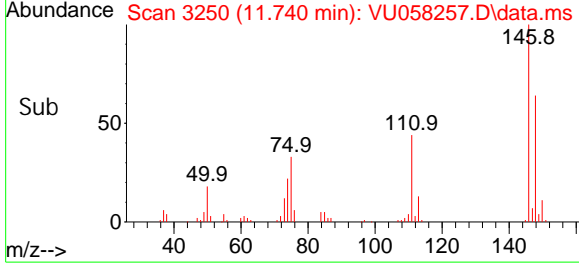


#64  
 1,3-Di chl orobenzene  
 Concen: 4.577 ug/L  
 RT: 11.740 min Scan# 31  
 Delta R.T. 0.000 min  
 Lab File: VU058257.D  
 Acq: 28 Mar 2024 22:10

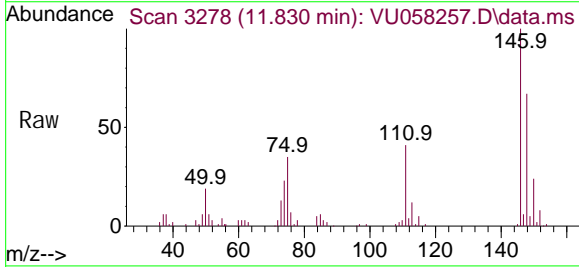
Instrument :  
 MSVOA\_U  
 ClientSampleId :



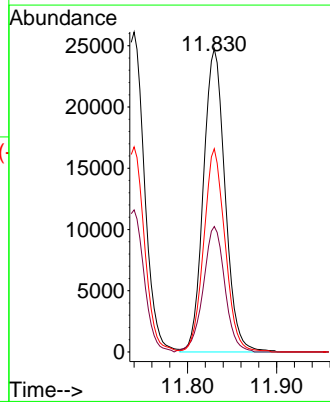
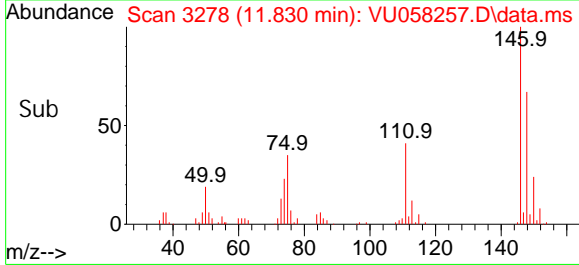
Tgt Ion: 146 Resp: 43015  
 Ion Ratio Lower Upper  
 146 100  
 111 44.4 29.9 55.5  
 148 64.1 44.4 82.4

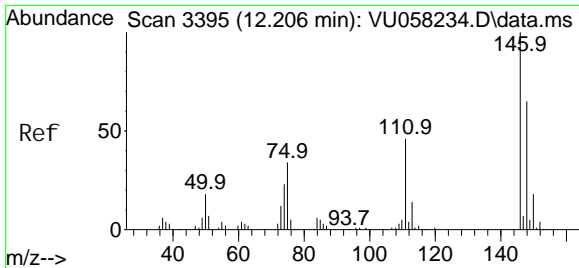


#65  
 1,4-Di chl orobenzene  
 Concen: 4.604 ug/L  
 RT: 11.830 min Scan# 3278  
 Delta R.T. 0.000 min  
 Lab File: VU058257.D  
 Acq: 28 Mar 2024 22:10



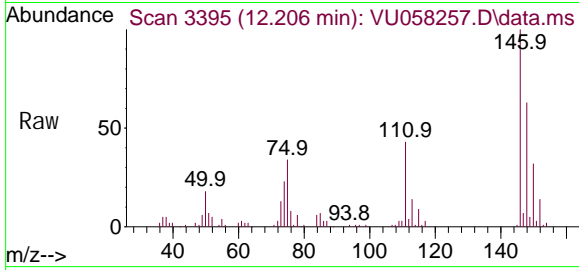
Tgt Ion: 146 Resp: 41818  
 Ion Ratio Lower Upper  
 146 100  
 111 41.4 29.0 53.8  
 148 67.0 44.5 82.7



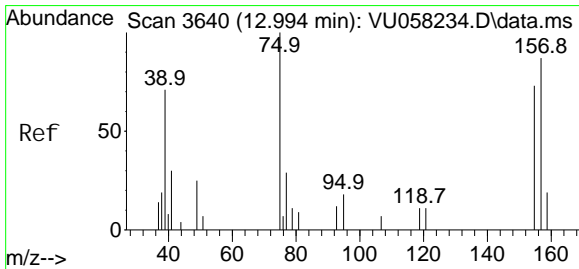
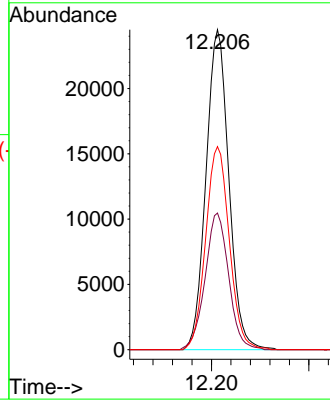
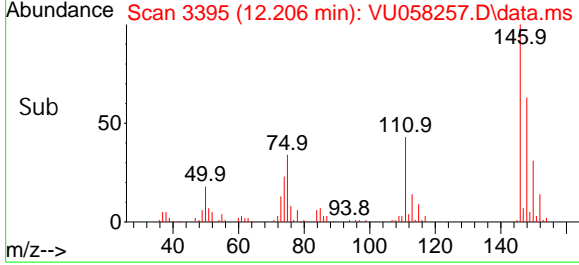


#67  
 1, 2-Di chl orobenzene  
 Concen: 4.593 ug/L  
 RT: 12.206 min Scan# 31  
 Del ta R. T. 0.000 min  
 Lab File: VU058257.D  
 Acq: 28 Mar 2024 22: 10

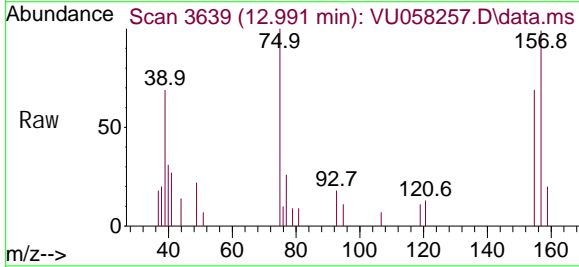
Instrument :  
 MSVOA\_U  
 ClientSampleId :



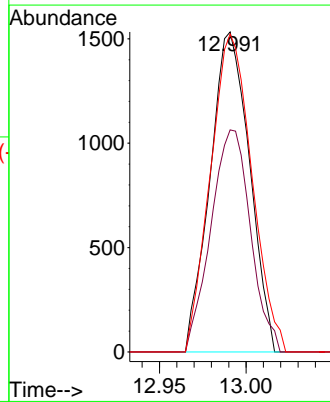
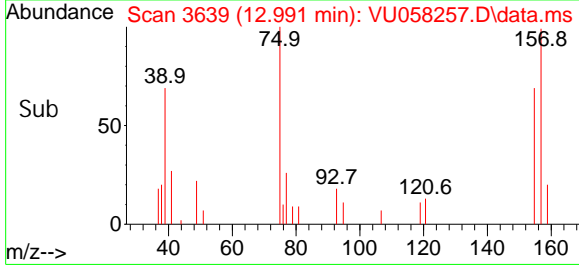
Tgt Ion: 146 Resp: 39918  
 Ion Ratio Lower Upper  
 146 100  
 111 42.7 35.9 53.9  
 148 63.5 52.4 78.6

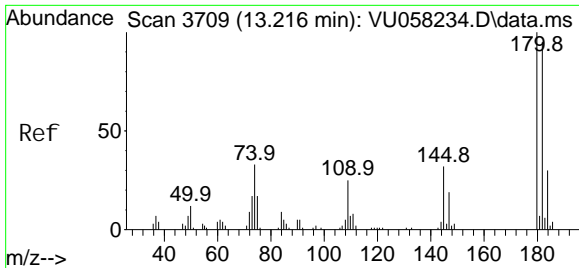


#68  
 1, 2-Di bromo-3- chl oropropane  
 Concen: 5.717 ug/L  
 RT: 12.991 min Scan# 3639  
 Del ta R. T. -0.003 min  
 Lab File: VU058257.D  
 Acq: 28 Mar 2024 22: 10



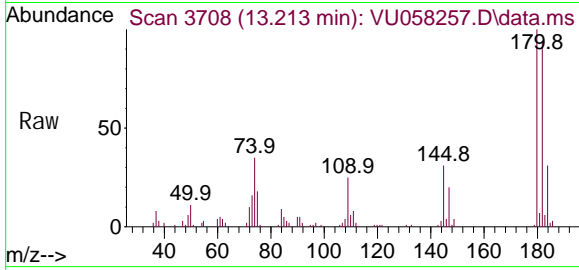
Tgt Ion: 75 Resp: 2425  
 Ion Ratio Lower Upper  
 75 100  
 155 69.4 60.2 90.2  
 157 99.3 82.6 123.8



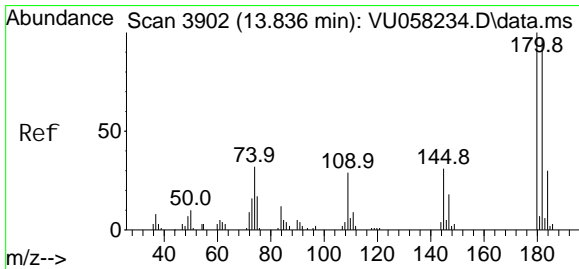
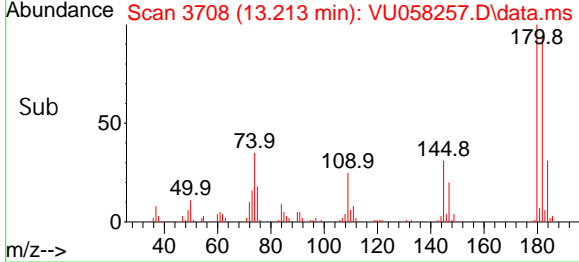
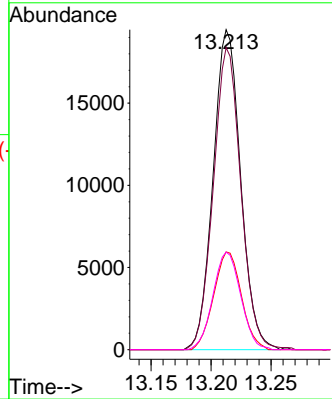


#69  
 1, 3, 5-Tri chlorobenzene  
 Concen: 4.713 ug/L  
 RT: 13.213 min Scan# 31  
 Delta R.T. -0.003 min  
 Lab File: VU058257.D  
 Acq: 28 Mar 2024 22:10

Instrument : MSVOA\_U  
 ClientSampleId :

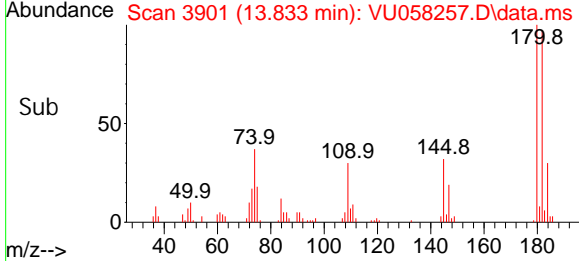
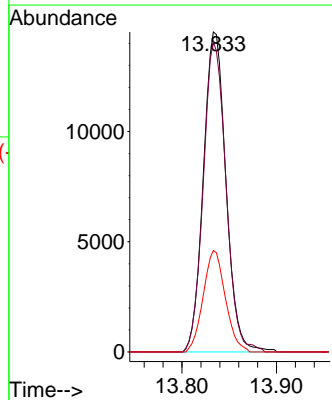
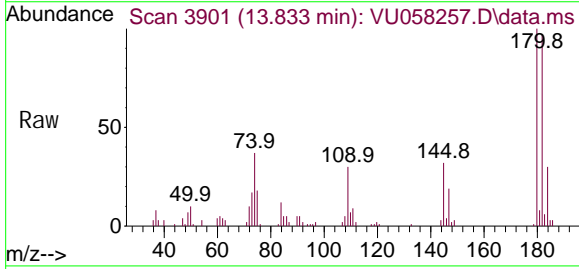


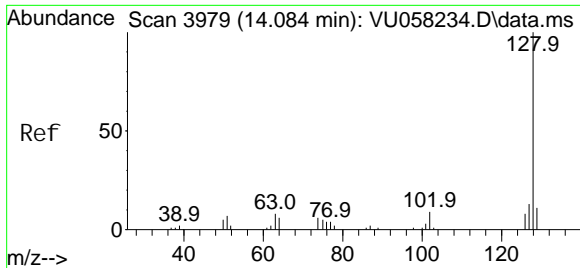
Tgt Ion: 180 Resp: 30973  
 Ion Ratio Lower Upper  
 180 100  
 182 94.6 75.4 113.0  
 184 30.9 24.8 37.2  
 145 30.8 24.6 36.8



#70  
 1, 2, 4-tri chlorobenzene  
 Concen: 4.914 ug/L  
 RT: 13.833 min Scan# 3901  
 Delta R.T. -0.003 min  
 Lab File: VU058257.D  
 Acq: 28 Mar 2024 22:10

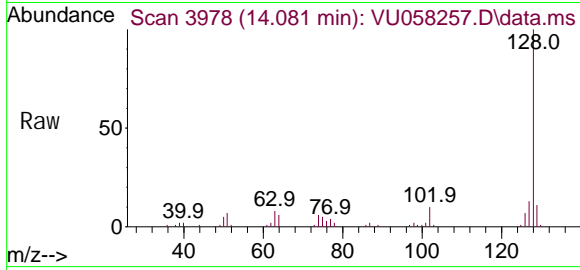
Tgt Ion: 180 Resp: 24086  
 Ion Ratio Lower Upper  
 180 100  
 182 97.1 74.5 111.7  
 145 31.1 24.5 36.7



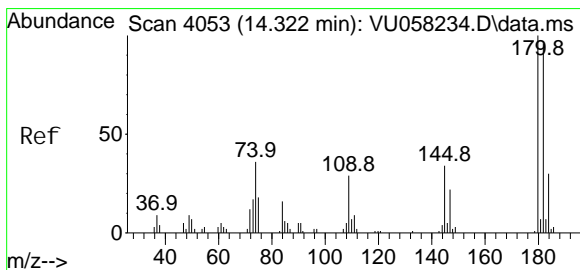
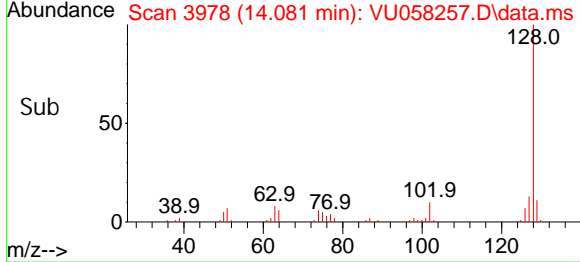
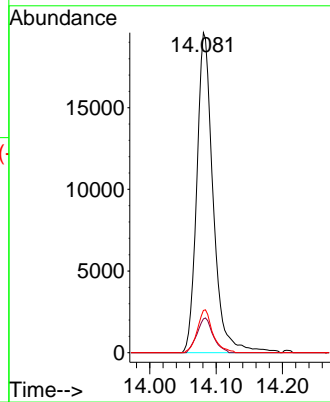


#71  
 Naphthalene  
 Concen: 5.026 ug/L  
 RT: 14.081 min Scan# 3978  
 Delta R.T. -0.003 min  
 Lab File: VU058257.D  
 Acq: 28 Mar 2024 22:10

Instrument : MSVOA\_U  
 ClientSampleId :



Tgt Ion: 128 Resp: 33548  
 Ion Ratio Lower Upper  
 128 100  
 129 10.6 8.1 12.1  
 127 12.6 10.2 15.4



#72  
 1,2,3-Trichlorobenzene  
 Concen: 5.250 ug/L  
 RT: 14.322 min Scan# 4053  
 Delta R.T. 0.000 min  
 Lab File: VU058257.D  
 Acq: 28 Mar 2024 22:10

Tgt Ion: 180 Resp: 21073  
 Ion Ratio Lower Upper  
 180 100  
 182 94.3 74.4 111.6  
 145 31.6 26.3 39.5

