

Data Path : Z:\voasrv\HPCHEM1\MSVOA\_U\Data\VU032921\  
 Data File : VU042825.D  
 Acq On : 29 Mar 2021 18:51  
 Operator : SY/MD  
 Sample : M1846-16  
 Misc : 25.0mL/MSVOA\_U/WATER  
 ALS Vial : 21 Sample Multiplier: 1

Instrument :  
 MSVOA\_U  
 ClientSampleId :  
 YAR30

Integration Parameters: rteint.p  
 Integrator: RTE  
 Smoothing : ON Filtering: 5  
 Sampling : 1 Min Area: 3 % of largest Peak  
 Start Thrs: 0.1 Max Peaks: 100  
 Stop Thrs : 0 Peak Location: TOP

If leading or trailing edge < 100 prefer < Baseline drop else tangent >  
 Peak separation: 5

Method : Z:\voasrv\HPCHEM1\MSVOA\_U\Method\SOMUTR030221WMA.M  
 Title : TRACE VOA SOM01.0

Signal : TIC: VU042825.D\data.ms

peak #	R.T. min	first scan	max scan	last scan	PK TY	peak height	corr. area	corr. % max.	% of total
1	1.604	74	82	93	rVB	32590	35599	10.11%	1.482%
2	1.919	171	180	195	rVB	27886	35592	10.11%	1.482%
3	2.575	373	384	400	rBV	56784	92307	26.21%	3.844%
4	4.649	1011	1029	1053	rBV	35737	122461	34.77%	5.100%
5	5.073	1141	1161	1182	rBV	53048	116580	33.10%	4.855%
6	5.735	1347	1367	1386	rBV3	102177	266391	75.64%	11.093%
7	6.256	1516	1529	1549	rBV	97151	186675	53.00%	7.774%
8	6.700	1654	1667	1684	rBV	67408	128045	36.36%	5.332%
9	7.575	1925	1939	1956	rVB2	34351	60302	17.12%	2.511%
10	7.906	2029	2042	2057	rBV	119764	206415	58.61%	8.596%
11	8.185	2119	2129	2143	rBV	21822	36598	10.39%	1.524%
12	8.645	2259	2272	2299	rBV	183524	352197	100.00%	14.666%
13	9.423	2499	2514	2532	rBV	144859	239818	68.09%	9.987%
14	10.764	2920	2931	2946	rVB2	54264	86080	24.44%	3.585%
15	11.819	3248	3259	3272	rBV	141201	222841	63.27%	9.280%
16	12.073	3330	3338	3349	rVB2	3408	5577	1.58%	0.232%
17	12.201	3365	3378	3395	rBV	128743	207936	59.04%	8.659%

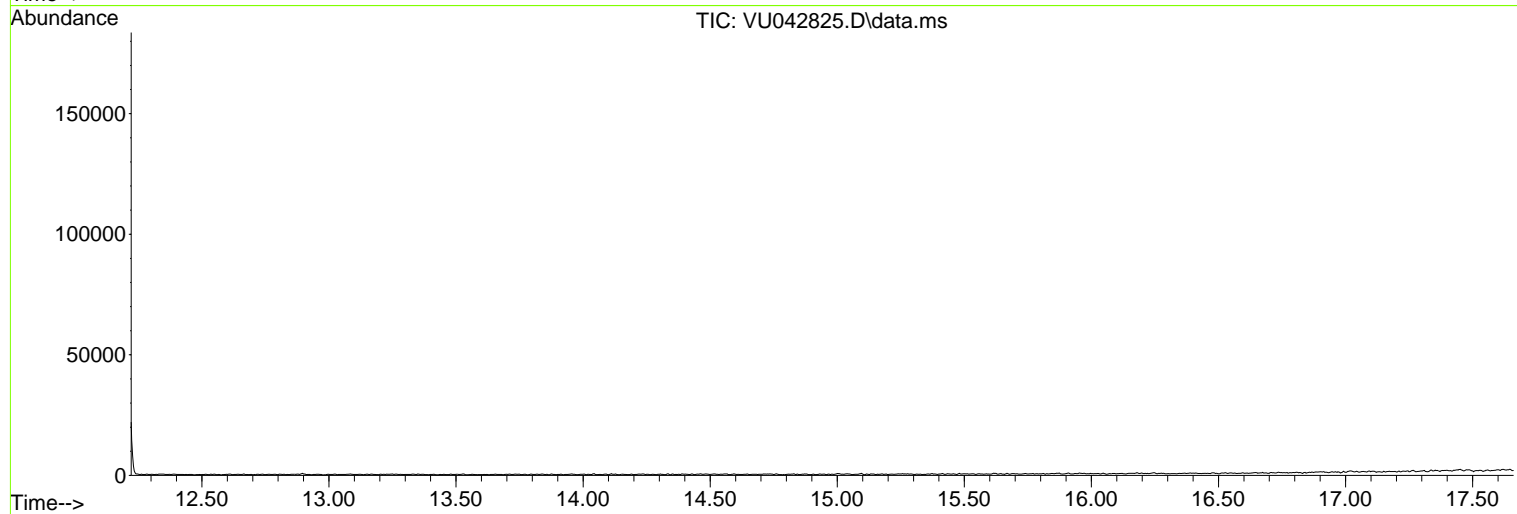
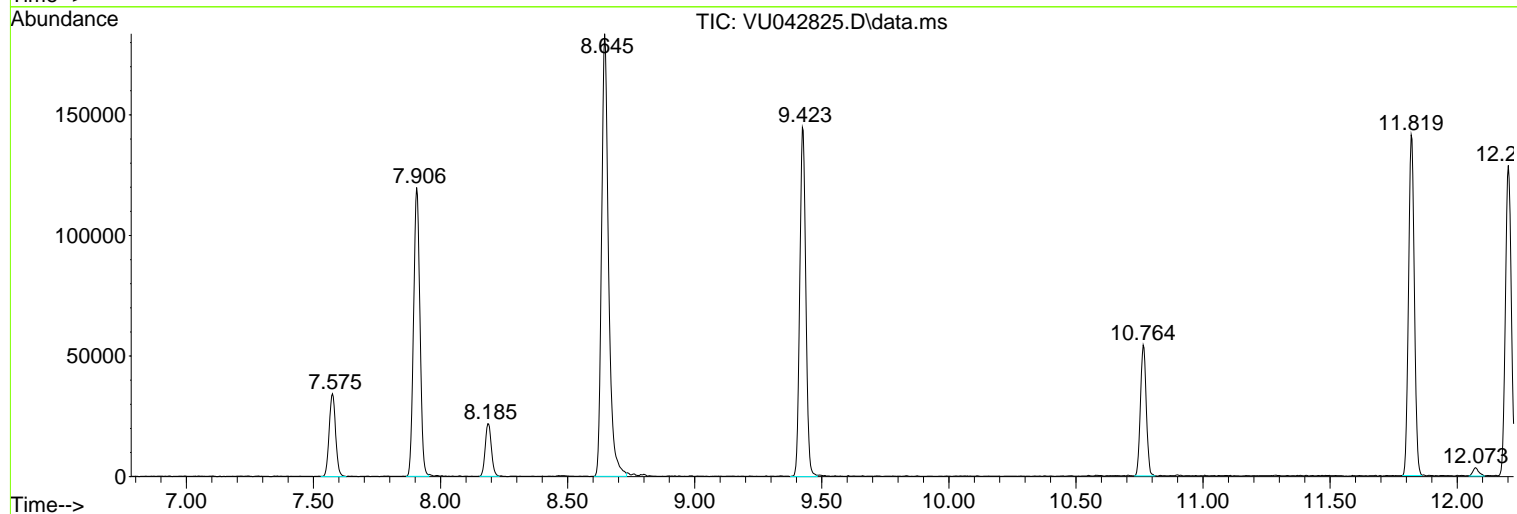
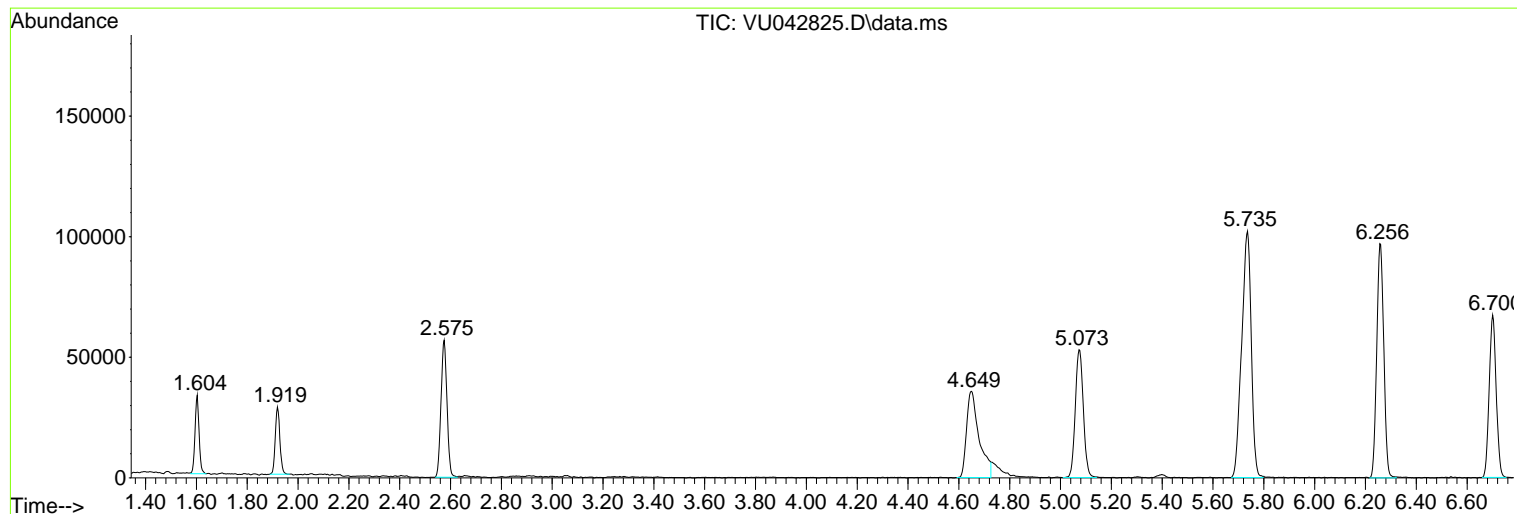
Sum of corrected areas: 2401414

Data Path : Z:\voasrv\HPCHEM1\MSVOA\_U\Data\VU032921\  
Data File : VU042825.D  
Acq On : 29 Mar 2021 18:51  
Operator : SY/MD  
Sample : M1846-16  
Misc : 25.0mL/MSVOA\_U/WATER  
ALS Vial : 21 Sample Multiplier: 1

Instrument :  
MSVOA\_U  
ClientSampled :  
YAR30

Quant Method : Z:\voasrv\HPCHEM1\MSVOA\_U\Method\SOMUTR030221WMA.M  
Quant Title : TRACE VOA SOM01.0

TIC Library : C:\DATABASE\NIST11.L  
TIC Integration Parameters: LSCINT.P



Data Path : Z:\voasrv\HPCHEM1\MSVOA\_U\Data\VU032921\  
Data File : VU042825.D  
Acq On : 29 Mar 2021 18:51  
Operator : SY/MD  
Sample : M1846-16  
Misc : 25.0mL/MSVOA\_U/WATER  
ALS Vial : 21 Sample Multiplier: 1

Instrument :  
MSVOA\_U  
ClientSampleId :  
YAR30

Quant Method : Z:\voasrv\HPCHEM1\MSVOA\_U\Method\SOMUTR030221WMA.M  
Quant Title : TRACE VOA SOM01.0

TIC Library : C:\DATABASE\NIST11.L  
TIC Integration Parameters: LSCINT.P

No Library Search Compounds Detected

\*\*\*\*\*

Data Path : Z:\voasrv\HPCHEM1\MSVOA\_U\Data\VU032921\  
Data File : VU042825.D  
Acq On : 29 Mar 2021 18:51  
Operator : SY/MD  
Sample : M1846-16  
Misc : 25.0mL/MSVOA\_U/WATER  
ALS Vial : 21 Sample Multiplier: 1

Instrument :  
MSVOA\_U  
ClientSampled :  
YAR30

Quant Method : Z:\voasrv\HPCHEM1\MSVOA\_U\Method\SOMUTR030221WMA.M  
Quant Title : TRACE VOA SOM01.0

TIC Library : C:\DATABASE\NIST11.L  
TIC Integration Parameters: LSCINT.P

TIC Top Hit name	RT	EstConc	Units	Response	--Internal Standard--		
					#	RT	Resp Conc

---