

Data Path : Z:\voasrv\HPCHEM1\MSVOA_U\Data\VU032924\
 Data File : VU058280.D
 Acq On : 29 Mar 2024 19:24
 Operator : MD/SY
 Sample : P1912-02DL 100X
 Misc : 25.0mL/MSVOA_U/WATER
 ALS Vial : 23 Sample Multiplier: 1

Instrument :
 MSVOA_U
 ClientSampleId :
 DCOD3DL

Integration Parameters: rteint.p
 Integrator: RTE
 Smoothing : ON
 Sampling : 1
 Start Thrs : 0.1
 Stop Thrs : 0
 Filtering: 5
 Min Area: 3 % of largest Peak
 Max Peaks: 100
 Peak Location: TOP

If leading or trailing edge < 100 prefer < Baseline drop else tangent >
 Peak separation: 5

Method : Z:\voasrv\HPCHEM1\MSVOA_U\Method\SFAMUTR032124WMA.M
 Title : TRACE VOA SFAM1.0

Signal : TIC: VU058280.D\data.ms

peak #	R.T. min	first scan	max scan	last scan	PK TY	peak height	corr. area	corr. % max.	% of total
1	1.592	87	94	109	rVB	25646	29078	12.25%	1.532%
2	1.907	184	192	205	rBV	28113	33899	14.28%	1.786%
3	2.560	383	395	409	rBV	38383	61906	26.07%	3.262%
4	4.624	1028	1037	1062	rBV	34143	94230	39.68%	4.966%
5	5.055	1156	1171	1191	rBV	47252	103891	43.75%	5.475%
6	5.718	1359	1377	1397	rBV2	87093	226782	95.51%	11.951%
7	6.242	1528	1540	1563	rBV	85531	165130	69.54%	8.702%
8	6.682	1664	1677	1696	rBV2	57846	112944	47.56%	5.952%
9	7.560	1937	1950	1965	rBV2	22637	41050	17.29%	2.163%
10	7.891	2041	2053	2076	rBV	94536	165955	69.89%	8.746%
11	8.174	2132	2141	2159	rBV2	12026	21309	8.97%	1.123%
12	8.550	2250	2258	2266	rVB4	2631	3925	1.65%	0.207%
13	8.627	2269	2282	2317	rBV2	112267	237455	100.00%	12.513%
14	9.412	2513	2526	2552	rBV	123341	207332	87.31%	10.926%
15	10.750	2931	2942	2961	rVB2	39950	64220	27.05%	3.384%
16	11.807	3260	3271	3293	rBV	111449	182036	76.66%	9.593%
17	12.187	3379	3389	3409	rBV	87194	146454	61.68%	7.718%

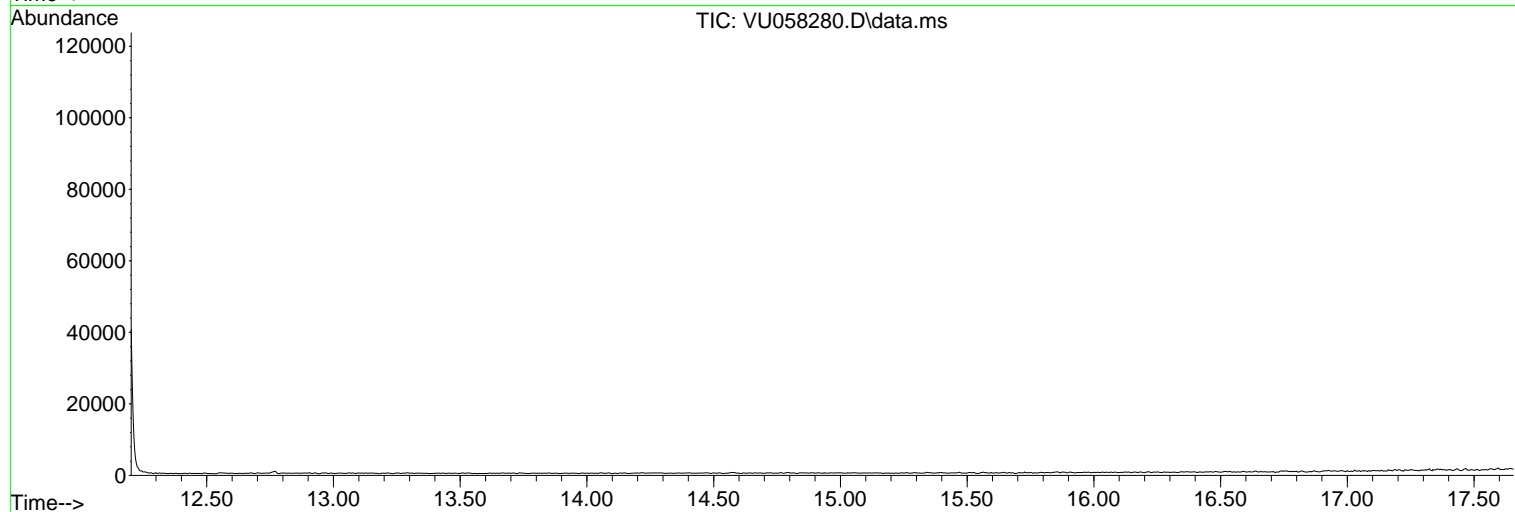
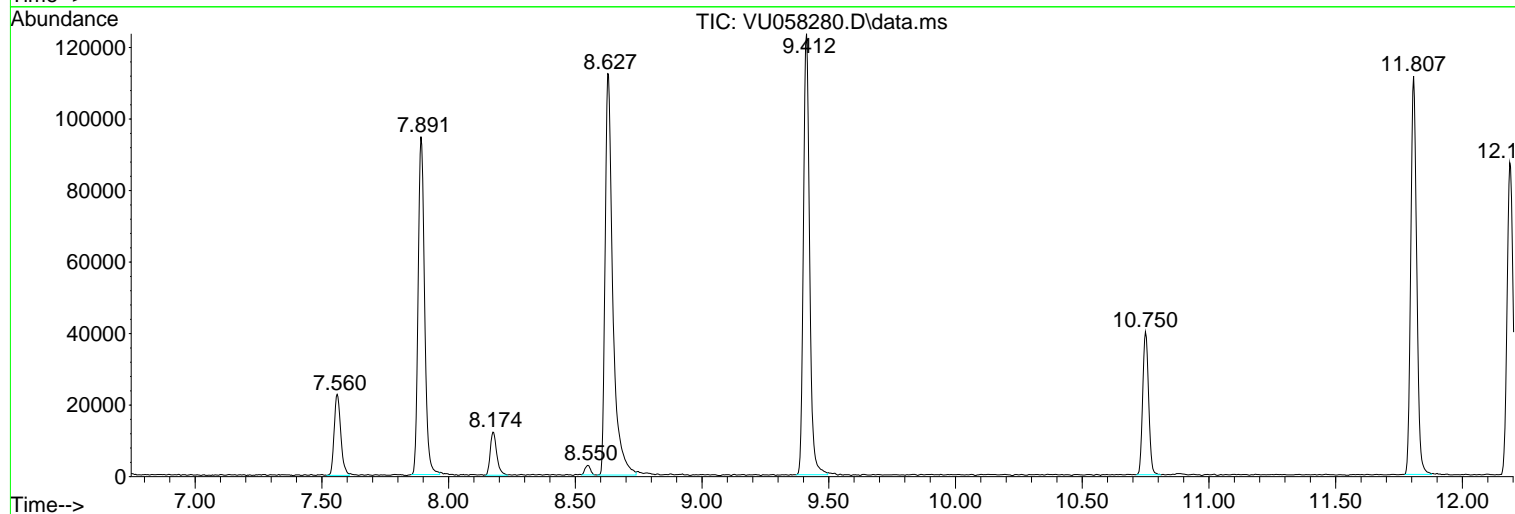
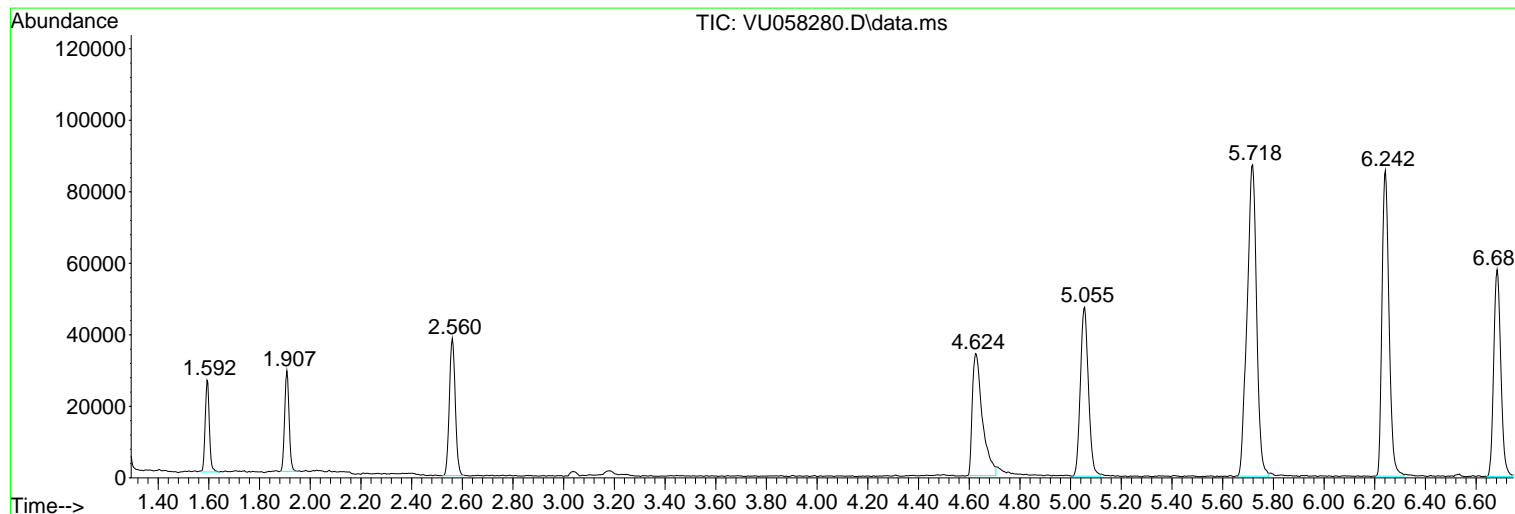
Sum of corrected areas: 1897596

Data Path : Z:\voasrv\HPCHEM1\MSVOA_U\Data\VU032924\
Data File : VU058280.D
Acq On : 29 Mar 2024 19:24
Operator : MD/SY
Sample : P1912-02DL 100X
Misc : 25.0mL/MSVOA_U/WATER
ALS Vial : 23 Sample Multiplier: 1

Instrument :
MSVOA_U
ClientSampleId :
DCOD3DL

Quant Method : Z:\voasrv\HPCHEM1\MSVOA_U\Method\SFAMUTR032124WMA.M
Quant Title : TRACE VOA SFAM1.0

TIC Library : C:\Database\NIST20.L
TIC Integration Parameters: LSCINT.P



Library Search Compound Report

Data Path : Z:\voasrv\HPCHEM1\MSVOA_U\Data\VU032924\
Data File : VU058280.D
Acq On : 29 Mar 2024 19:24
Operator : MD/SY
Sample : P1912-02DL 100X
Misc : 25.0mL/MSVOA_U/WATER
ALS Vial : 23 Sample Multiplier: 1

Instrument :
MSVOA_U
ClientSampleId :
DCOD3DL

Quant Method : Z:\voasrv\HPCHEM1\MSVOA_U\Method\SFAMUTR032124WMA.M
Quant Title : TRACE VOA SFAM1.0

TIC Library : C:\Database\NIST20.L
TIC Integration Parameters: LSCINT.P

No Library Search Compounds Detected

Data Path : Z:\voasrv\HPCHEM1\MSVOA_U\Data\VU032924\
Data File : VU058280.D
Acq On : 29 Mar 2024 19:24
Operator : MD/SY
Sample : P1912-02DL 100X
Misc : 25.0mL/MSVOA_U/WATER
ALS Vial : 23 Sample Multiplier: 1

Instrument :
MSVOA_U
ClientSampleId :
DCOD3DL

Quant Method : Z:\voasrv\HPCHEM1\MSVOA_U\Method\SFAMUTR032124WMA.M
Quant Title : TRACE VOA SFAM1.0

TIC Library : C:\Database\NIST0.L
TIC Integration Parameters: LSCINT.P

TIC Top Hit name	RT	EstConc	Units	Response	--Internal Standard--			
					#	RT	Resp	Conc
