

Data Path : Z:\VOASRV\HPCHEM1\MSVOA_U\DATA\VU033019\
 Data File : VU030562.D
 Acq On : 29 Mar 2019 23:41
 Operator : JC/SP
 Sample : K2166-06
 Misc : 5.0mL/MSVOA_U/WATER
 ALS Vial : 20 Sample Multiplier: 1

Instrument :
 MSVOA_U
 ClientSampleId :
 BF1A8

Integration Parameters: LSCINT.P

Integrator: RTE
 Smoothing : OFF
 Sampling : 1
 Start Thrs: 0.2
 Stop Thrs : 0

Filtering: 5
 Min Area: 0 % of largest Peak
 Max Peaks: 100
 Peak Location: TOP

If leading or trailing edge < 100 prefer < Baseline drop else tangent >
 Peak separation: 5

Method : Z:\VOASRV\HPCHEM1\MSVOA_U\METHOD\SOMULM032319WMA.M
 Title : VOC Analysis

Signal : TIC

peak #	R.T. min	first scan	max scan	last scan	PK TY	peak height	corr. area	corr. % max.	% of total
1	1.183	23	29	39	rVB	54566	51978	3.03%	0.377%
2	1.328	70	74	81	rVB	8779	8572	0.50%	0.062%
3	1.399	88	96	111	rBV	233424	244250	14.23%	1.774%
4	1.473	115	119	128	rVB	17985	18102	1.05%	0.131%
5	1.672	174	181	202	rVB	183246	241921	14.10%	1.757%
6	2.270	356	367	377	rBV	360040	558108	32.52%	4.053%
7	2.321	378	383	396	rVB	45644	69161	4.03%	0.502%
8	2.447	412	422	443	rBV	92947	170011	9.91%	1.235%
9	2.694	494	499	502	rBV5	1752	1947	0.11%	0.014%
10	2.836	531	543	556	rVB	6527	13784	0.80%	0.100%
11	2.887	556	559	565	rBV4	452	365	0.02%	0.003%
12	2.942	573	576	581	rVV3	427	480	0.03%	0.003%
13	2.984	581	589	603	rVB7	3399	6444	0.38%	0.047%
14	3.055	608	611	615	rVB2	550	433	0.03%	0.003%
15	3.190	643	653	661	rBV7	2954	6751	0.39%	0.049%
16	3.225	662	664	668	rVB3	1081	608	0.04%	0.004%
17	3.337	695	699	704	rVB2	407	419	0.02%	0.003%
18	3.579	771	774	779	rVV2	391	389	0.02%	0.003%
19	3.630	786	790	794	rVB2	444	376	0.02%	0.003%
20	3.669	799	802	806	rBV2	399	365	0.02%	0.003%
21	3.710	812	815	820	rBV2	394	454	0.03%	0.003%
22	3.974	892	897	898	rBV3	960	742	0.04%	0.005%
23	4.000	900	905	922	rVB6	2109	5454	0.32%	0.040%
24	4.177	946	960	1004	rBV	185531	566972	33.04%	4.117%
25	4.527	1066	1069	1072	rBV2	580	466	0.03%	0.003%
26	4.546	1072	1075	1077	rVV4	624	383	0.02%	0.003%
27	4.643	1089	1105	1137	rVV	281982	672688	39.20%	4.885%
28	4.890	1175	1182	1186	rBV7	1240	1601	0.09%	0.012%
29	5.337	1297	1321	1355	rBV2	563528	1716140	100.00%	12.463%
30	5.575	1393	1395	1400	rBV5	636	575	0.03%	0.004%
31	5.678	1423	1427	1431	rVB4	488	479	0.03%	0.003%
32	5.784	1455	1460	1461	rBV2	524	419	0.02%	0.003%
33	5.800	1461	1465	1474	rVB6	1439	1683	0.10%	0.012%
34	5.884	1476	1491	1523	rBV	521258	1063660	61.98%	7.724%

Data Path : Z:\VOASRV\HPCHEM1\MSVOA_U\DATA\VU033019\
 Data File : VU030562.D
 Acq On : 29 Mar 2019 23:41
 Operator : JC/SP
 Sample : K2166-06
 Misc : 5.0mL/MSVOA_U/WATER
 ALS Vial : 20 Sample Multiplier: 1

Instrument :
 MSVOA_U
 ClientSampleId :
 BF1A8

Integration Parameters: LSCINT.P

Integrator: RTE
 Smoothing : OFF
 Sampling : 1
 Start Thrs: 0.2
 Stop Thrs : 0

Filtering: 5
 Min Area: 0 % of largest Peak
 Max Peaks: 100
 Peak Location: TOP

If leading or trailing edge < 100 prefer < Baseline drop else tangent >
 Peak separation: 5

Method : Z:\VOASRV\HPCHEM1\MSVOA_U\METHOD\SOMULM032319WMA.M
 Title : VOC Analysis

35	6.186	1571	1585	1601	rBV2	57224	114608	6.68%	0.832%
36	6.328	1614	1629	1648	rBV	390233	804693	46.89%	5.844%
37	6.691	1738	1742	1746	rBV2	373	382	0.02%	0.003%
38	6.742	1753	1758	1766	rVB5	713	883	0.05%	0.006%
39	6.826	1770	1784	1794	rBV7	1311	3050	0.18%	0.022%
40	6.878	1794	1800	1801	rBV4	1027	1088	0.06%	0.008%
41	6.939	1817	1819	1826	rVB3	645	579	0.03%	0.004%
42	6.993	1833	1836	1841	rVB3	407	373	0.02%	0.003%
43	7.225	1896	1908	1936	rBV	198341	374969	21.85%	2.723%
44	7.389	1953	1959	1967	rBV7	2008	3256	0.19%	0.024%
45	7.466	1976	1983	1998	rVB3	6699	11551	0.67%	0.084%
46	7.562	1999	2013	2033	rBV	690308	1222888	71.26%	8.881%
47	7.849	2090	2102	2122	rBV	137340	251825	14.67%	1.829%
48	8.080	2169	2174	2176	rBV4	567	578	0.03%	0.004%
49	8.122	2184	2187	2191	rVB4	696	514	0.03%	0.004%
50	8.148	2191	2195	2196	rBV2	519	418	0.02%	0.003%
51	8.173	2196	2203	2213	rVB4	4921	8927	0.52%	0.065%
52	8.231	2213	2221	2229	rBV6	2633	3970	0.23%	0.029%
53	8.308	2233	2245	2289	rBV	594357	1158088	67.48%	8.410%
54	8.668	2350	2357	2360	rBV5	994	1299	0.08%	0.009%
55	8.768	2384	2388	2392	rVV3	422	378	0.02%	0.003%
56	8.913	2431	2433	2440	rBV3	698	620	0.04%	0.005%
57	9.086	2474	2487	2516	rBV	762648	1297032	75.58%	9.419%
58	9.382	2568	2579	2582	rBV9	1678	3070	0.18%	0.022%
59	9.437	2593	2596	2600	rBV2	1278	1278	0.07%	0.009%
60	9.469	2604	2606	2610	rVV3	678	537	0.03%	0.004%
61	9.572	2634	2638	2640	rBV3	995	731	0.04%	0.005%
62	9.630	2651	2656	2658	rBV3	586	517	0.03%	0.004%
63	9.797	2697	2708	2710	rBV5	1899	3367	0.20%	0.024%
64	9.855	2723	2726	2731	rBV3	662	674	0.04%	0.005%
65	9.877	2731	2733	2739	rVB3	447	394	0.02%	0.003%
66	9.938	2746	2752	2754	rBV2	1136	1036	0.06%	0.008%
67	10.041	2777	2784	2790	rBV5	1877	2446	0.14%	0.018%
68	10.167	2814	2823	2833	rVB6	2956	5020	0.29%	0.036%
69	10.234	2839	2844	2845	rBV2	454	404	0.02%	0.003%
70	10.427	2890	2904	2923	rBV	539131	890458	51.89%	6.467%
71	10.572	2945	2949	2951	rBV	540	433	0.03%	0.003%

Data Path : Z:\VOASRV\HPCHEM1\MSVOA_U\DATA\VU033019\
 Data File : VU030562.D
 Acq On : 29 Mar 2019 23:41
 Operator : JC/SP
 Sample : K2166-06
 Misc : 5.0mL/MSVOA_U/WATER
 ALS Vial : 20 Sample Multiplier: 1

Instrument :
 MSVOA_U
 ClientSampleId :
 BF1A8

Integration Parameters: LSCINT.P

Integrator: RTE
 Smoothing : OFF
 Sampling : 1
 Start Thrs: 0.2
 Stop Thrs : 0

Filtering: 5
 Min Area: 0 % of largest Peak
 Max Peaks: 100
 Peak Location: TOP

If leading or trailing edge < 100 prefer < Baseline drop else tangent >
 Peak separation: 5

Method : Z:\VOASRV\HPCHEM1\MSVOA_U\METHOD\SOMULM032319WMA.M
 Title : VOC Analysis

72	10.604	2951	2959	2968	rVB2	4788	7336	0.43%	0.053%
73	10.713	2984	2993	3002	rBV5	3137	5781	0.34%	0.042%
74	10.816	3018	3025	3032	rBV7	1268	1849	0.11%	0.013%
75	11.003	3080	3083	3092	rVB3	607	629	0.04%	0.005%
76	11.083	3105	3108	3115	rVB3	540	573	0.03%	0.004%
77	11.160	3125	3132	3137	rBV3	819	1158	0.07%	0.008%
78	11.421	3204	3213	3220	rBV5	4219	7430	0.43%	0.054%
79	11.482	3220	3232	3254	rBV	616107	1029070	59.96%	7.473%
80	11.729	3302	3309	3314	rBV5	1377	1466	0.09%	0.011%
81	11.858	3334	3349	3372	rBV	600271	1014475	59.11%	7.367%
82	12.196	3451	3454	3456	rVB2	589	394	0.02%	0.003%
83	12.234	3463	3466	3469	rVB3	850	516	0.03%	0.004%
84	12.450	3531	3533	3535	rBV2	718	440	0.03%	0.003%
85	12.475	3536	3541	3549	rVV3	1894	2364	0.14%	0.017%
86	12.540	3559	3561	3564	rVB3	759	420	0.02%	0.003%
87	12.559	3564	3567	3569	rBV2	694	507	0.03%	0.004%
88	12.659	3592	3598	3599	rBV2	991	877	0.05%	0.006%
89	12.691	3606	3608	3611	rBV	623	384	0.02%	0.003%
90	12.778	3628	3635	3640	rBV3	859	1262	0.07%	0.009%
91	12.864	3659	3662	3663	rBV	711	417	0.02%	0.003%
92	12.893	3663	3671	3680	rVB3	5860	9473	0.55%	0.069%
93	13.035	3712	3715	3718	rBV2	768	481	0.03%	0.003%
94	13.134	3743	3746	3750	rBV2	794	535	0.03%	0.004%
95	13.334	3806	3808	3814	rVB2	443	367	0.02%	0.003%
96	13.401	3825	3829	3832	rBV2	507	363	0.02%	0.003%
97	13.511	3854	3863	3870	rBV6	9057	14813	0.86%	0.108%
98	13.749	3928	3937	3947	rBV2	19817	40786	2.38%	0.296%
99	13.990	4003	4012	4028	rBV5	11877	26068	1.52%	0.189%
100	14.257	4088	4095	4097	rBV4	960	1266	0.07%	0.009%

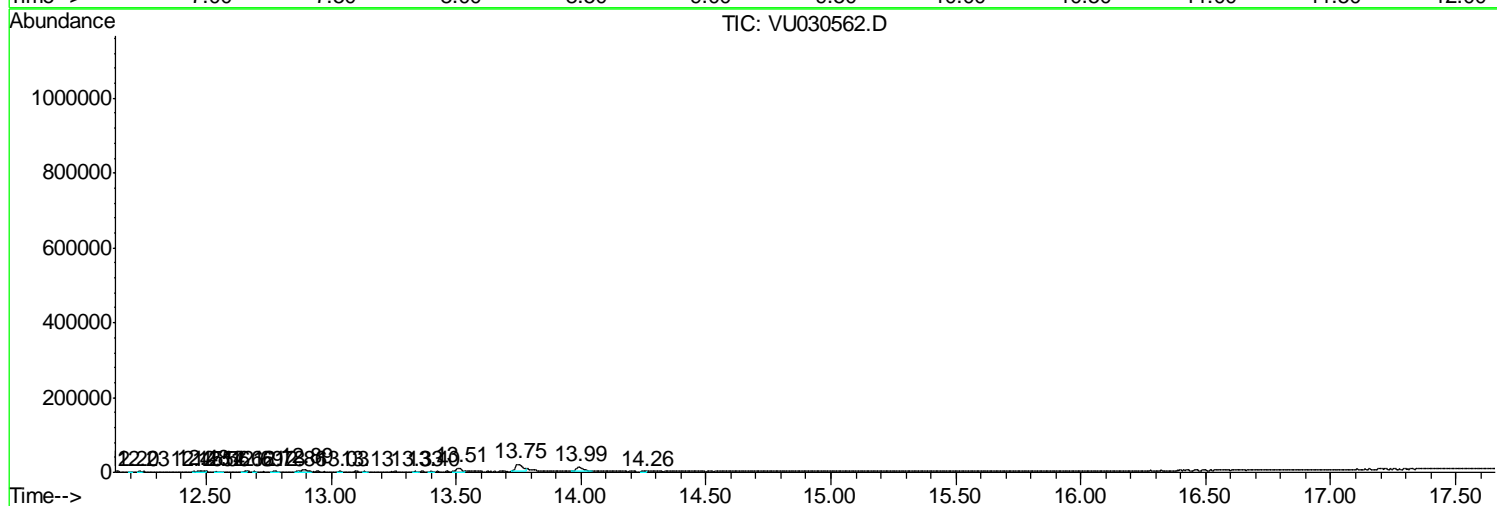
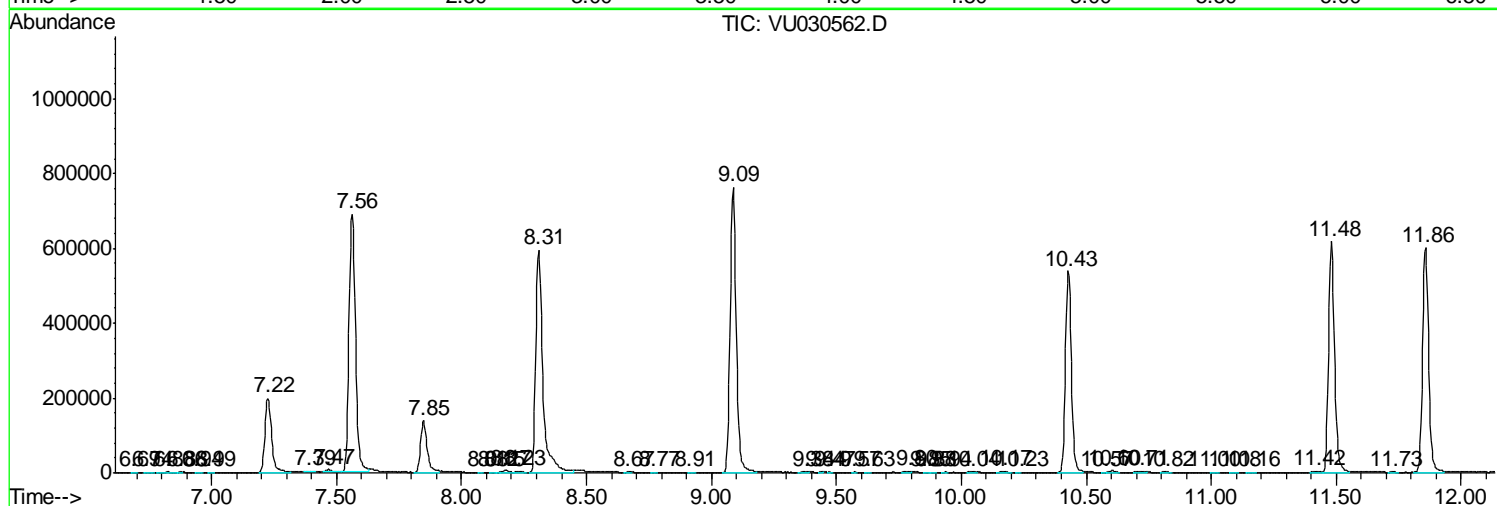
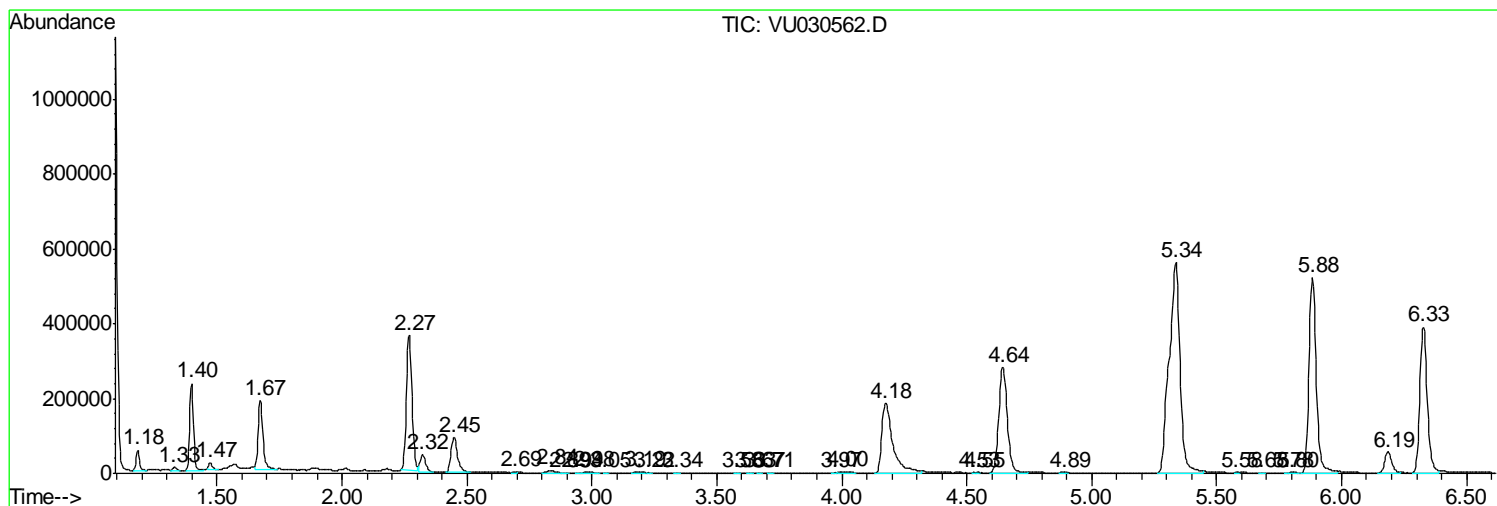
Sum of corrected areas: 13770014

Data Path : Z:\VOASRV\HPCHEM1\MSVOA_U\DATA\VU033019\
 Data File : VU030562.D
 Acq On : 29 Mar 2019 23:41
 Operator : JC/SP
 Sample : K2166-06
 Misc : 5.0mL/MSVOA_U/WATER
 ALS Vial : 20 Sample Multiplier: 1

Instrument :
 MSVOA_U
 ClientSampleId :
 BF1A8

Quant Method : Z:\VOASRV\HPCHEM1\MSVOA_U\METHOD\SOMULM032319WMA.M
 Quant Title : VOC Analysis

TIC Library : C:\DATABASE\NIST11.L
 TIC Integration Parameters: LSCINT.P



Data Path : Z:\VOASRV\HPCHEM1\MSVOA_U\DATA\VU033019\
 Data File : VU030562.D
 Acq On : 29 Mar 2019 23:41
 Operator : JC/SP
 Sample : K2166-06
 Misc : 5.0mL/MSVOA_U/WATER
 ALS Vial : 20 Sample Multiplier: 1

Instrument :
 MSVOA_U
 ClientSampleID :
 BF1A8

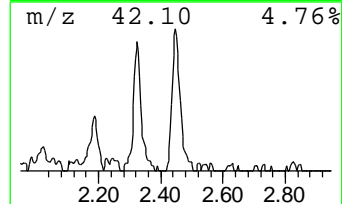
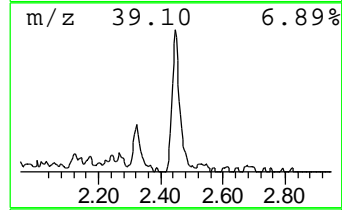
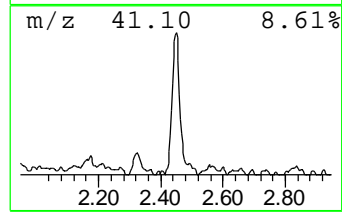
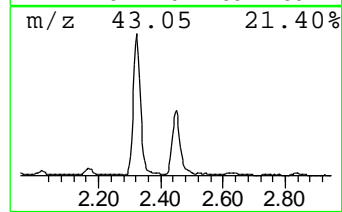
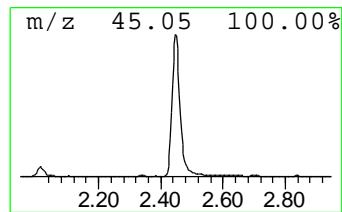
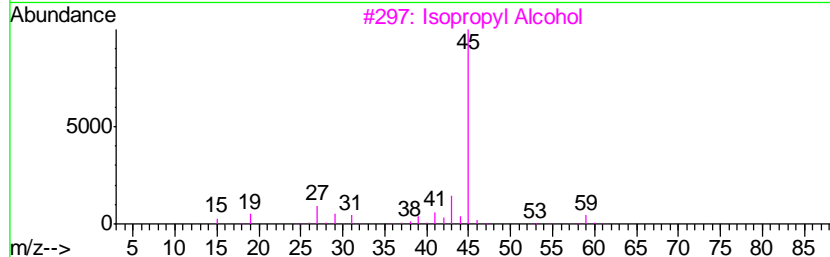
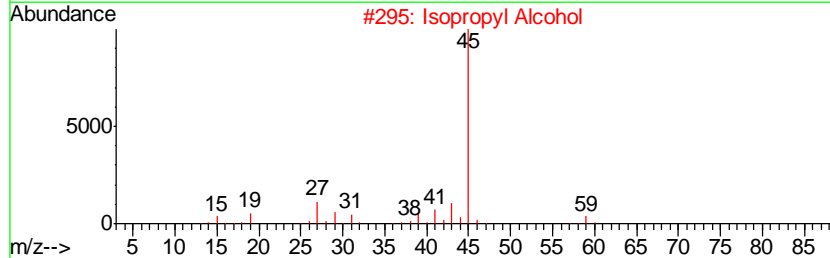
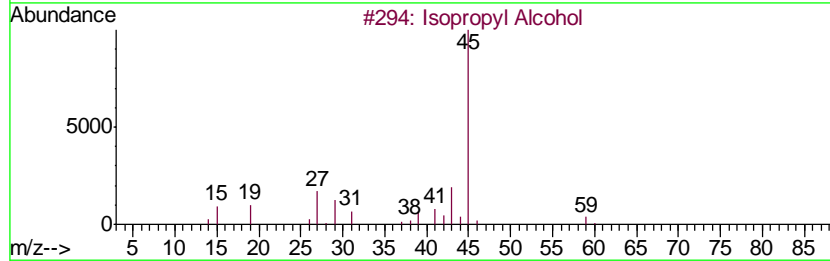
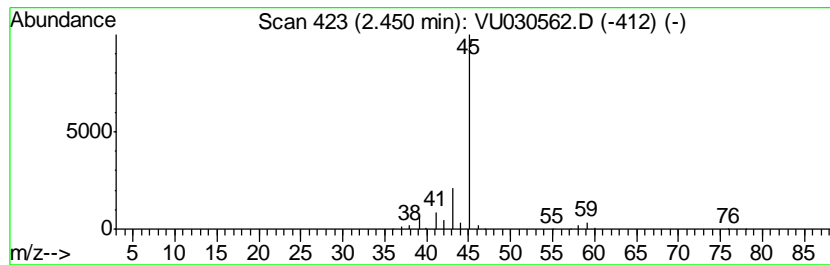
Quant Method : Z:\VOASRV\HPCHEM1\MSVOA_U\METHOD\SOMULM032319WMA.M
 Quant Title : VOC Analysis

TIC Library : C:\DATABASE\NIST11.L
 TIC Integration Parameters: LSCINT.P

 Peak Number 1 Isopropyl Alcohol Concentration Rank 2

R.T.	EstConc	Area	Relative to ISTD	R.T.
2.45	7.99 ug/L	170011	1,4-Difluorobenzene	5.88

Hit#	of	Tentative ID	MW	MolForm	CAS#	Qual
1	5	Isopropyl Alcohol	60	C3H8O	000067-63-0	83
2		Isopropyl Alcohol	60	C3H8O	000067-63-0	78
3		Isopropyl Alcohol	60	C3H8O	000067-63-0	64
4		Hydrazine, 1,2-dimethyl-	60	C2H8N2	000540-73-8	9
5		Hydrazine, 1,2-dimethyl-	60	C2H8N2	000540-73-8	9



Data Path : Z:\VOASRV\HPCHEM1\MSVOA_U\DATA\VU033019\
Data File : VU030562.D
Acq On : 29 Mar 2019 23:41
Operator : JC/SP
Sample : K2166-06
Misc : 5.0mL/MSVOA_U/WATER
ALS Vial : 20 Sample Multiplier: 1

Instrument :
MSVOA_U
ClientSampleId :
BF1A8

Quant Method : Z:\VOASRV\HPCHEM1\MSVOA_U\METHOD\SOMULM032319WMA.M
Quant Title : VOC Analysis

TIC Library : C:\DATABASE\NIST11.L
TIC Integration Parameters: LSCINT.P

TIC Top Hit name	RT	EstConc	Units	Response	--Internal Standard--			
					#	RT	Resp	Conc
Isopropyl Alcohol	2.45	8.0	ug/L	170011	1	5.88	1063660	50.0