

Data Path : Z:\VOASRV\HPCHEM1\MSVOA U\DATA\VU040119\
 Data File : VU030586.D
 Acq On : 31 Mar 2019 13:44
 Operator : JC/SP
 Sample : K2167-16 50X
 Misc : 5.0mL/MSVOA U/WATER
 ALS Vial : 6 Sample Multiplier: 1

Instrument :
 MSVOA_U
 ClientSampleID :
 BF1D0

Quant Time: Apr 01 02:33:51 2019
 Quant Method : Z:\VOASRV\HPCHEM1\MSVOA_U\METHOD\SOMULM032319WMA.M
 Quant Title : VOC Analysis
 QLast Update : Mon Apr 01 02:05:14 2019
 Response via : Initial Calibration

Internal Standards	R.T.	QIon	Response	Conc	Units	Dev(Min)
1) 1,4-Difluorobenzene	5.88	114	438511	50.00	ug/L	0.00
28) Chlorobenzene-d5	9.09	117	412526	50.00	ug/L	0.00
60) 1,4-Dichlorobenzene-d4	11.48	152	166714	50.00	ug/L	0.00

System Monitoring Compounds

4) Vinyl Chloride-d3	1.40	65	149817	42.45	ug/L	0.00
Spiked Amount	50.000	Range	60 - 135	Recovery	=	84.90%
7) Chloroethane-d5	1.68	69	128786	46.04	ug/L	0.00
Spiked Amount	50.000	Range	70 - 130	Recovery	=	92.08%
11) 1,1-Dichloroethene-d2	2.27	63	224132	33.48	ug/L	0.00
Spiked Amount	50.000	Range	60 - 125	Recovery	=	66.96%
21) 2-Butanone-d5	4.18	46	299044	90.14	ug/L	0.00
Spiked Amount	100.000	Range	40 - 130	Recovery	=	90.14%
24) Chloroform-d	4.65	84	277158	45.58	ug/L	0.00
Spiked Amount	50.000	Range	70 - 125	Recovery	=	91.16%
26) 1,2-Dichloroethane-d4	5.31	65	188528	47.38	ug/L	0.00
Spiked Amount	50.000	Range	70 - 125	Recovery	=	94.76%
32) Benzene-d6	5.34	84	556504	47.04	ug/L	0.00
Spiked Amount	50.000	Range	70 - 125	Recovery	=	94.08%
36) 1,2-Dichloropropane-d6	6.33	67	199471	49.28	ug/L	0.00
Spiked Amount	50.000	Range	70 - 120	Recovery	=	98.56%
41) Toluene-d8	7.56	98	483641	45.52	ug/L	0.00
Spiked Amount	50.000	Range	80 - 120	Recovery	=	91.04%
43) trans-1,3-Dichloropropene-	7.85	79	85047	44.69	ug/L	0.00
Spiked Amount	50.000	Range	60 - 125	Recovery	=	89.38%
47) 2-Hexanone-d5	8.31	63	189770	86.52	ug/L	0.00
Spiked Amount	100.000	Range	45 - 130	Recovery	=	86.52%
57) 1,1,2,2-Tetrachloroethane-	10.43	84	271207	46.82	ug/L	0.00
Spiked Amount	50.000	Range	65 - 120	Recovery	=	93.64%
64) 1,2-Dichlorobenzene-d4	11.86	152	167400	50.11	ug/L	0.00
Spiked Amount	50.000	Range	80 - 120	Recovery	=	100.22%

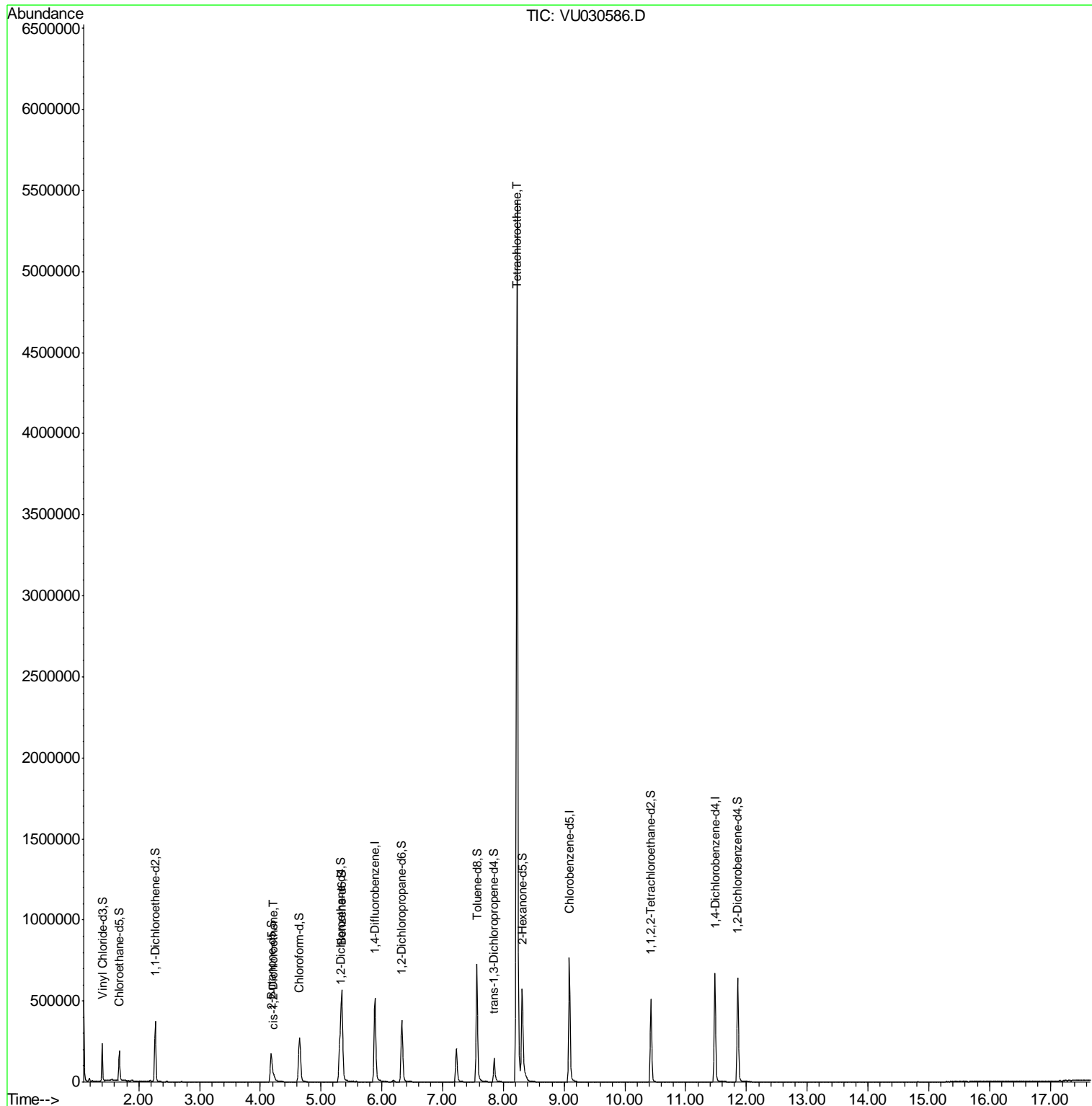
Target Compounds	R.T.	QIon	Response	Conc	Units	Ovalue
20) cis-1,2-Dichloroethene	4.23	96	7989	2.164	ug/L	100
46) Tetrachloroethene	8.22	164	1222756	507.115	ug/L	98

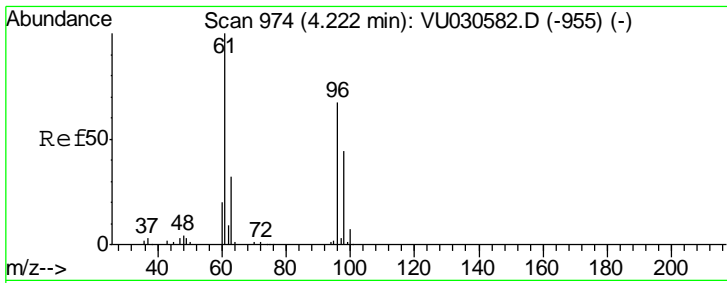
(#) = qualifier out of range (m) = manual integration (+) = signals summed

Data Path : Z:\VOASRV\HPCHEM1\MSVOA U\DATA\VU040119\
 Data File : VU030586.D
 Acq On : 31 Mar 2019 13:44
 Operator : JC/SP
 Sample : K2167-16 50X
 Misc : 5.0mL/MSVOA U/WATER
 ALS Vial : 6 Sample Multiplier: 1

Instrument :
 MSVOA_U
 ClientSampleId :
 BF1D0

Quant Time: Apr 01 02:33:51 2019
 Quant Method : Z:\VOASRV\HPCHEM1\MSVOA_U\METHOD\SOMULM032319WMA.M
 Quant Title : VOC Analysis
 QLast Update : Mon Apr 01 02:05:14 2019
 Response via : Initial Calibration



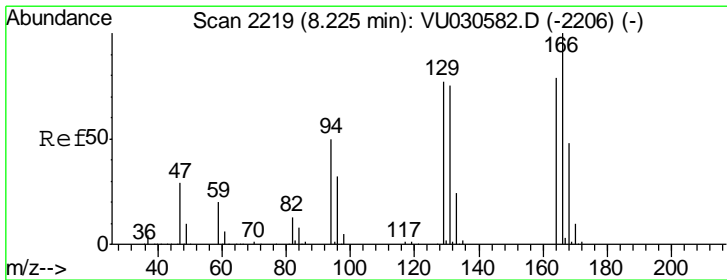
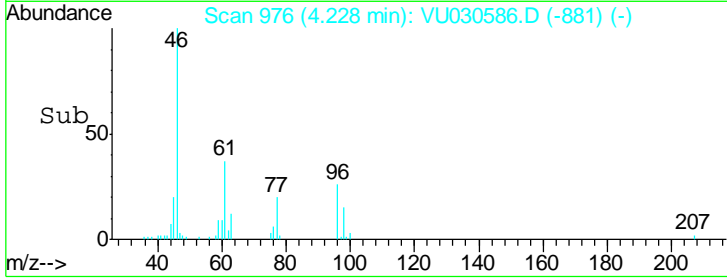
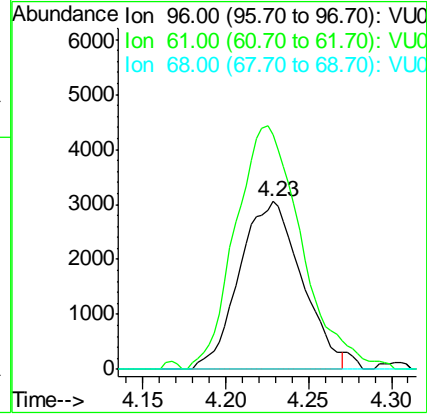
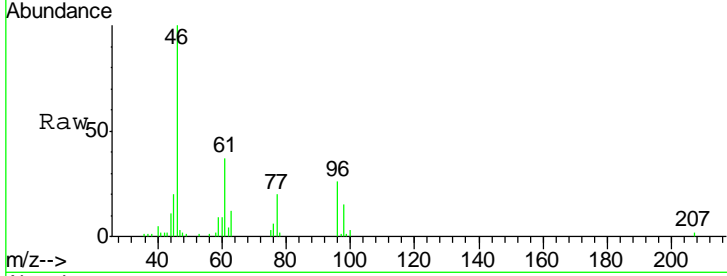


#20
 cis-1,2-Dichloroethene
 Concen: 2.164 ug/L
 RT: 4.23 min Scan# 976
 Delta R.T. 0.01 min
 Lab File: VU030586.D
 Acq: 31 Mar 2019 13:44

Instrument :
 MSVOA_U
 ClientSampleID :
 BF1D0

Tgt Ion: 96 Resp: 7989

Ion	Ratio	Lower	Upper
96	100		
61	140.5	98.4	182.8
68	0.0	0.0	0.0



#46
 Tetrachloroethene
 Concen: 507.115 ug/L
 RT: 8.22 min Scan# 2219
 Delta R.T. 0.00 min
 Lab File: VU030586.D
 Acq: 31 Mar 2019 13:44

Tgt Ion: 164 Resp: 1222756

Ion	Ratio	Lower	Upper
164	100		
129	99.4	68.1	126.5
131	95.4	67.7	125.7
166	128.0	92.4	171.6

